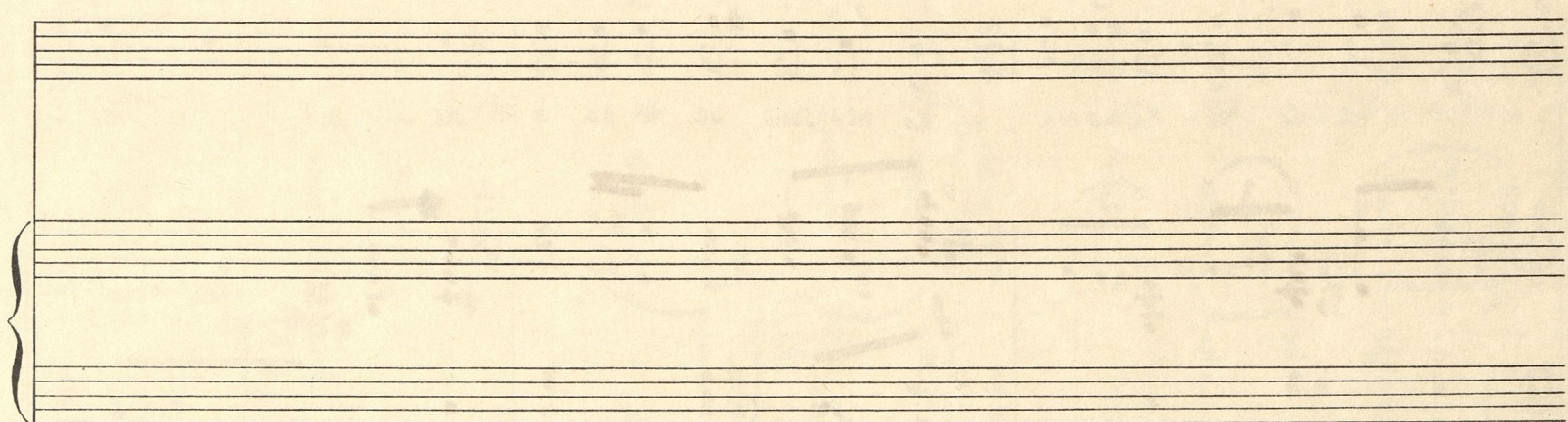


LJUBEZEN

Beličič



Ljubiana, 30. novembra 1944



Andante amoroso ♩ = 60

mf

de- kel- ca, sto - pl- lo, si na mo - - jo pot

ta- ko ne- hadoma, ko ni- sem se to na - de - jal in

mi ob no- ge ni več plju- skal sto - - rič blo - - denj val,

ko ni bi-lo mra - ku, le topla luč pov - sod, — si

The first system of the handwritten musical score consists of two staves. The upper staff is a vocal line in treble clef, with lyrics written below it: "ko ni bi-lo mra - ku, le topla luč pov - sod, — si". The lower staff is a piano accompaniment in grand staff (treble and bass clefs), featuring chords and melodic lines. The key signature has one sharp (F#), and the time signature is 3/4.

ti - sta ti ki ča - kal sem vse dni za - stonj nje belih

The second system of the handwritten musical score consists of two staves. The upper staff is a vocal line in treble clef, with lyrics: "ti - sta ti ki ča - kal sem vse dni za - stonj nje belih". The lower staff is a piano accompaniment in grand staff. The lyrics "ti - sta ti ki ča - kal sem vse dni za - stonj nje belih" are written below the vocal line. The piano accompaniment includes dynamic markings like *ff* and *f*.

rok, o - ti sva - re - - čih, trpko re - stih lic? Na ustnih

The third system of the handwritten musical score consists of two staves. The upper staff is a vocal line in treble clef, with lyrics: "rok, o - ti sva - re - - čih, trpko re - stih lic? Na ustnih". The lower staff is a piano accompaniment in grand staff. The lyrics "rok, o - ti sva - re - - čih, trpko re - stih lic? Na ustnih" are written below the vocal line. The piano accompaniment includes dynamic markings like *ff* and *f*.

tro - jih pe - sem pri - ta - - je - - na - ne - mi klic, kot da bi

The fourth system of the handwritten musical score consists of two staves. The upper staff is a vocal line in treble clef, with lyrics: "tro - jih pe - sem pri - ta - - je - - na - ne - mi klic, kot da bi". The lower staff is a piano accompaniment in grand staff. The lyrics "tro - jih pe - sem pri - ta - - je - - na - ne - mi klic, kot da bi" are written below the vocal line. The piano accompaniment includes dynamic markings like *ff* and *f*.



*ff* *mf* *p*

*zval* ne - slu - te - nih pomladi sladki vonj.

*pp* *Dolcissimo*

*Daj* pri - di sku - paj

*f* *ppp sempre*

*una corda*

poj - di - va! Je - sen je po - plu - ti - la

o - ble - de - le to - ge sred po - - ljan.

Vo - to - žnem son - cu nama

bo pri - je - tno vno - vi dan

sta - pi - ti iz za - kle - nje - ne - ga st - ca

oz - kih sten!

ppp

tit.

