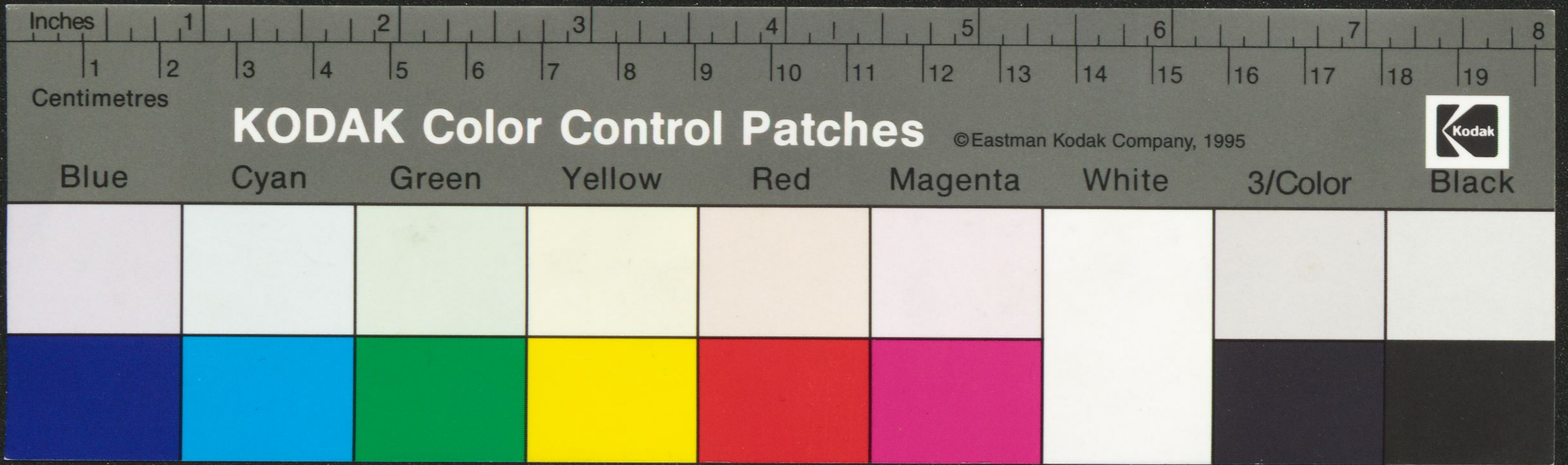


Fragment of an ancient manuscript, likely Hebrew, showing two columns of text written in a cursive script. The parchment is aged and stained, with some red ink used for initials or headings. The text is arranged in approximately 12 lines per column, with some lines starting with large, decorated initials. The script is dense and difficult to read due to its cursive nature and the condition of the parchment.



Fragment of a Hebrew manuscript with two columns of text written in a medieval script. The parchment is aged and shows signs of wear, including a large hole at the top center. The text is written in black ink with some red initials or rubrics. The script is dense and appears to be a form of medieval Hebrew or Aramaic.