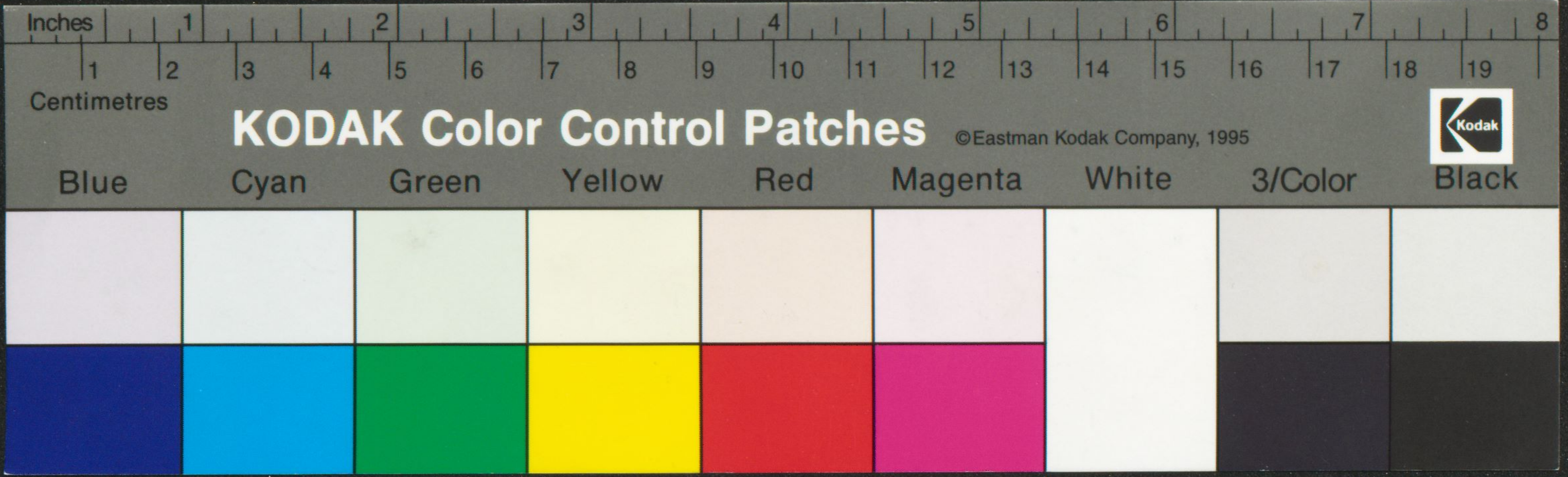


Handwritten text in an ancient script, likely Georgian, on aged parchment. The text is arranged in two columns per page. Large red initials are used to mark the beginning of new sections or paragraphs. The parchment shows signs of wear, including a small hole at the bottom left of the left page.



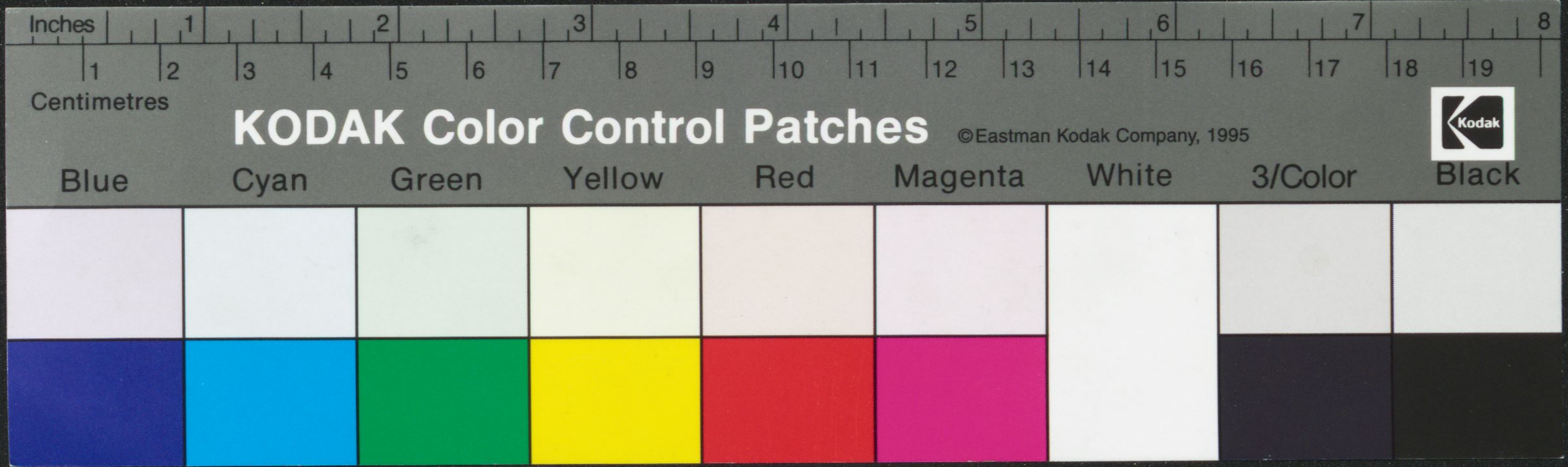


Fragment of a manuscript page on the left edge, showing the right-hand side of a page with text in a medieval script. The text is partially cut off by the edge of the image.

Fragment of a manuscript page in the middle, showing the right-hand side of a page. The text is written in a medieval script with several large, ornate initials in red ink. The paper is aged and shows some wear and tear.

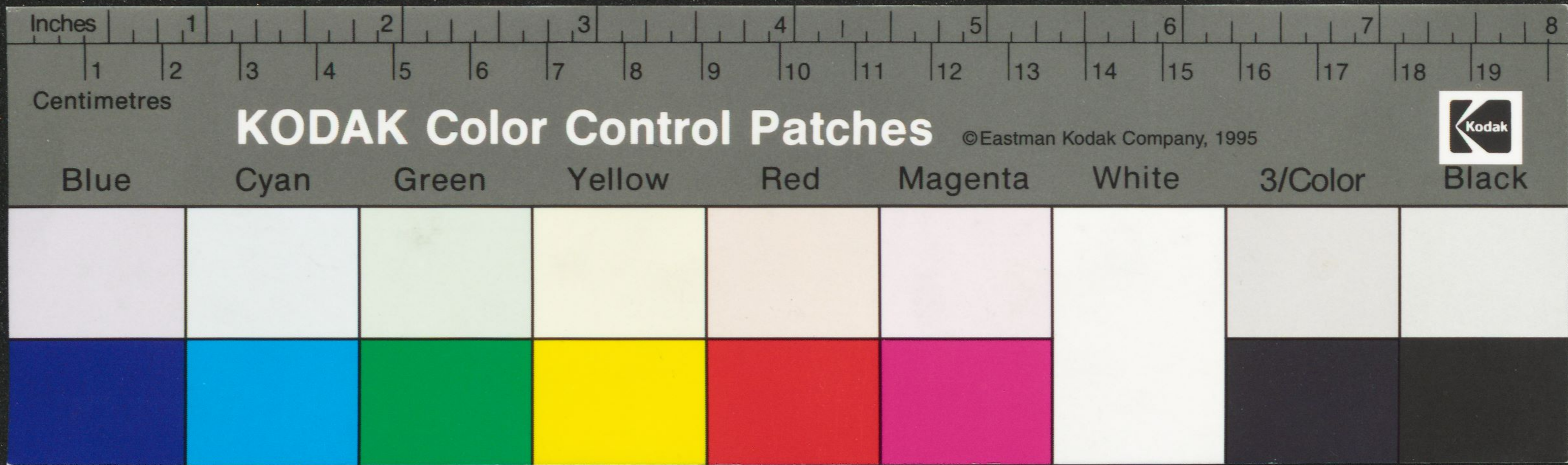
Fragment of a manuscript page on the right edge, showing the left-hand side of a page. The text is written in a medieval script with several large, ornate initials in red ink. The paper is aged and shows some wear and tear.





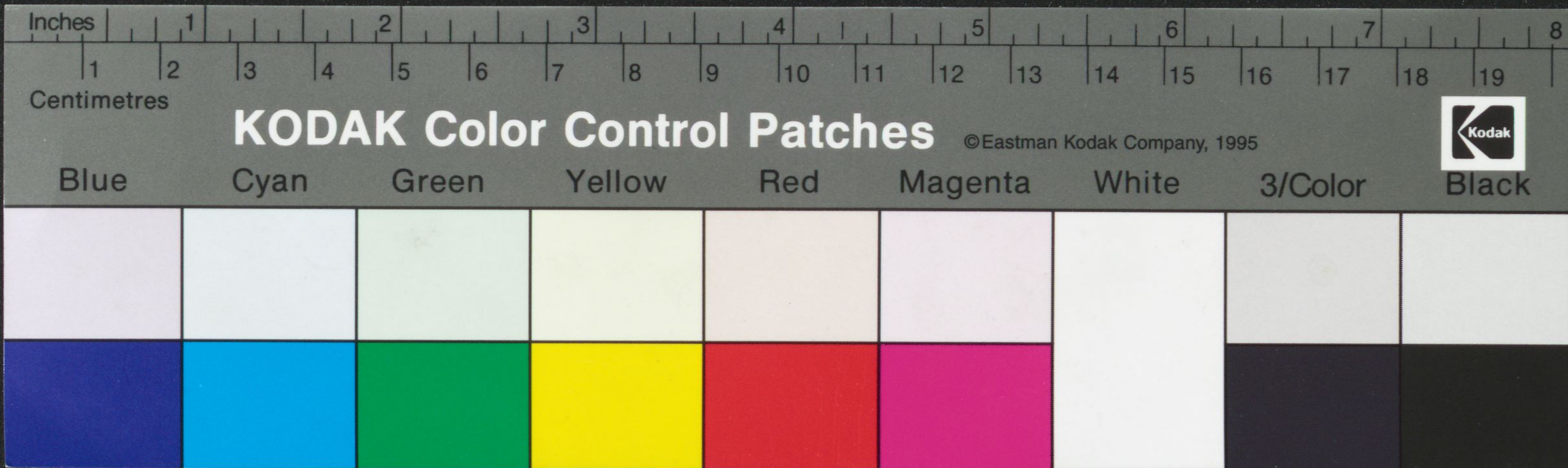
Fragment of an ancient manuscript page, likely containing text in a non-Latin script (possibly Coptic or Greek). The text is written in dark ink on aged, brownish parchment. Several lines of text are highlighted in red ink, indicating a specific section or a decorative element. The parchment is heavily worn, with significant fraying and discoloration, particularly along the edges and in the center. The text is arranged in two columns, with the right column being more legible than the left. The script is dense and appears to be a form of early modern Greek or Coptic.





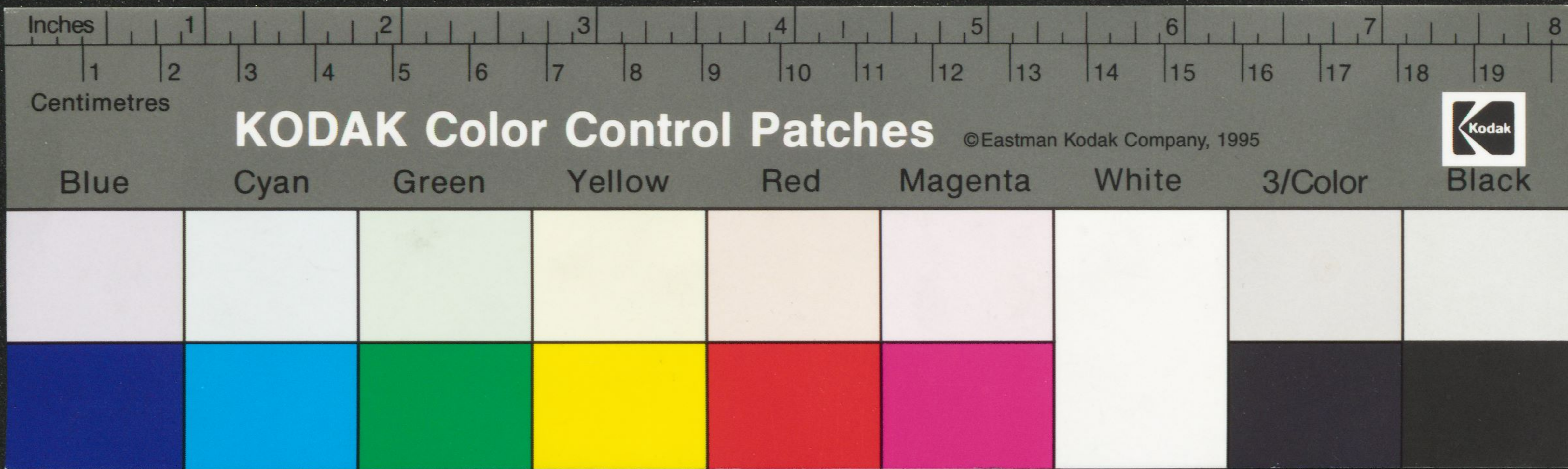
Handwritten text in a medieval script, likely Church Slavonic, on two pages of aged parchment. The text is written in black ink with prominent red initials and rubrics. The script is dense and fills most of the page area. The parchment shows signs of age, including some staining and uneven texture.





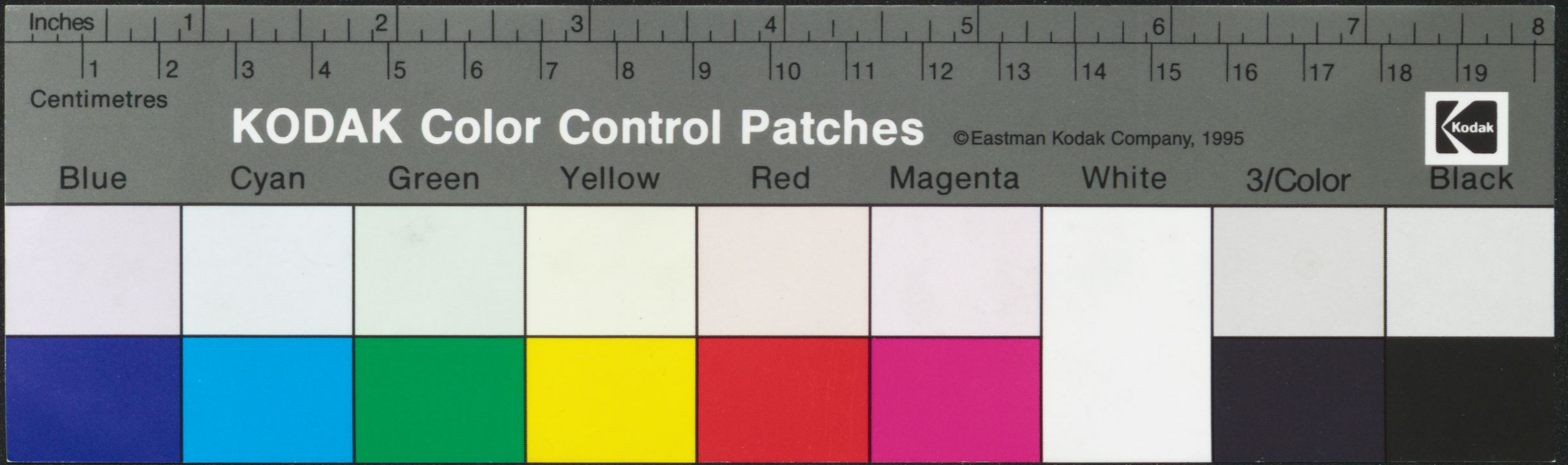
Handwritten text in an old Cyrillic script, likely Church Slavonic, is visible on both pages of the manuscript. The text is arranged in multiple columns per page. Red ink is used for decorative initials and rubrics, while the main body of text is in black ink. The parchment shows signs of age, including some staining and wear at the edges.





Handwritten text in a medieval script, likely Latin or a related language, written in black ink on aged parchment. The text is arranged in two columns, with red ink used for decorative initials and rubrics. The script is dense and characteristic of the Carolingian or similar medieval bookhands. The parchment shows signs of age, including some staining and wear at the edges.





Handwritten text in a medieval script, likely a liturgical book or manuscript. The text is written in black ink on aged, yellowish parchment. Several lines of text are highlighted in red ink, indicating initials or specific sections. The script is dense and appears to be a form of Gothic or similar medieval hand. The parchment shows signs of wear, including creases and discoloration.