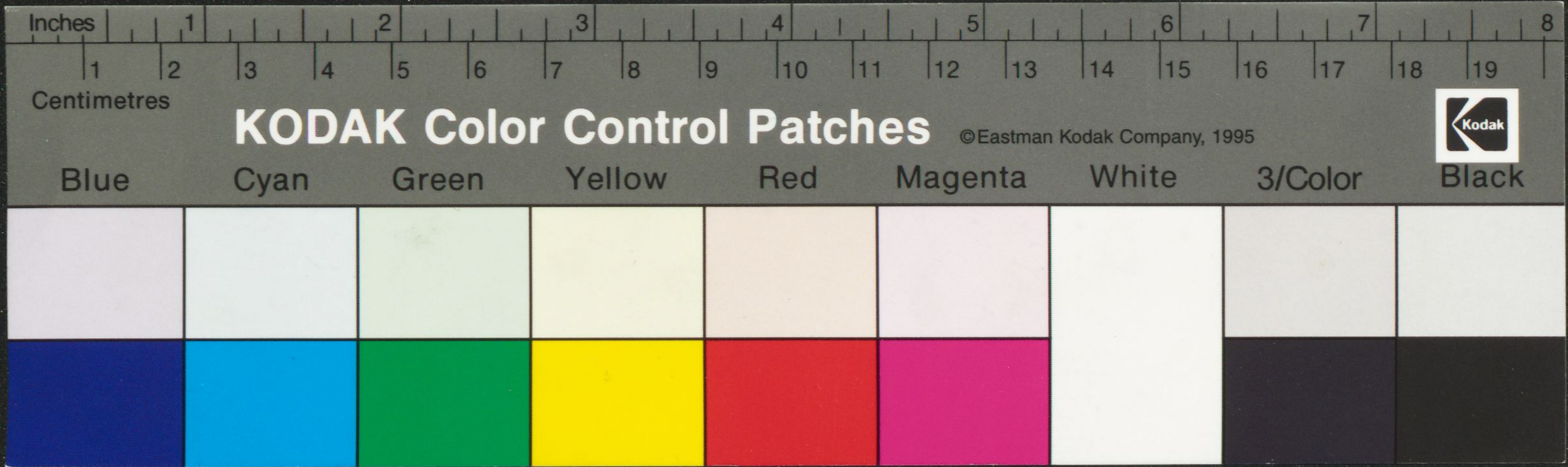
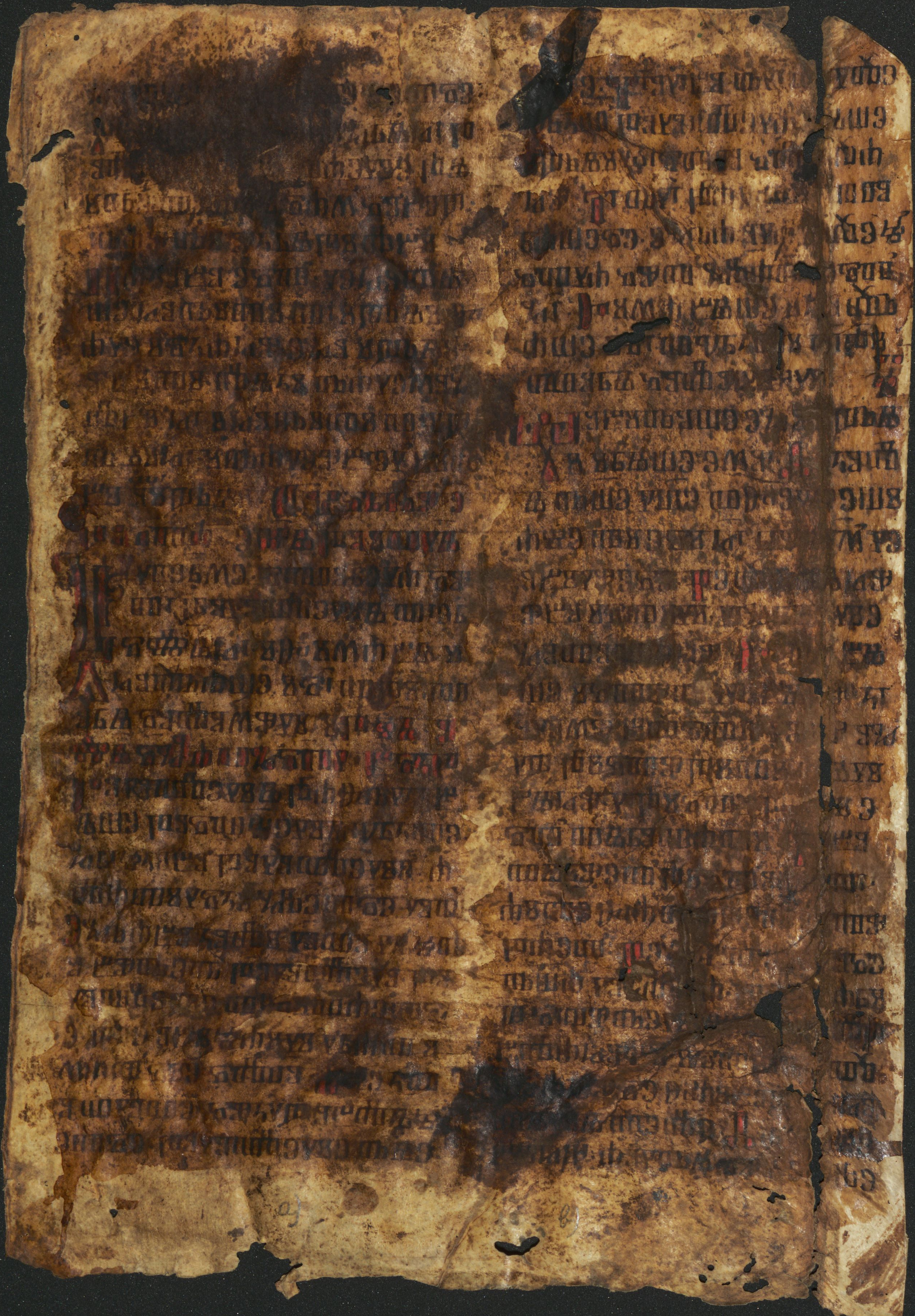
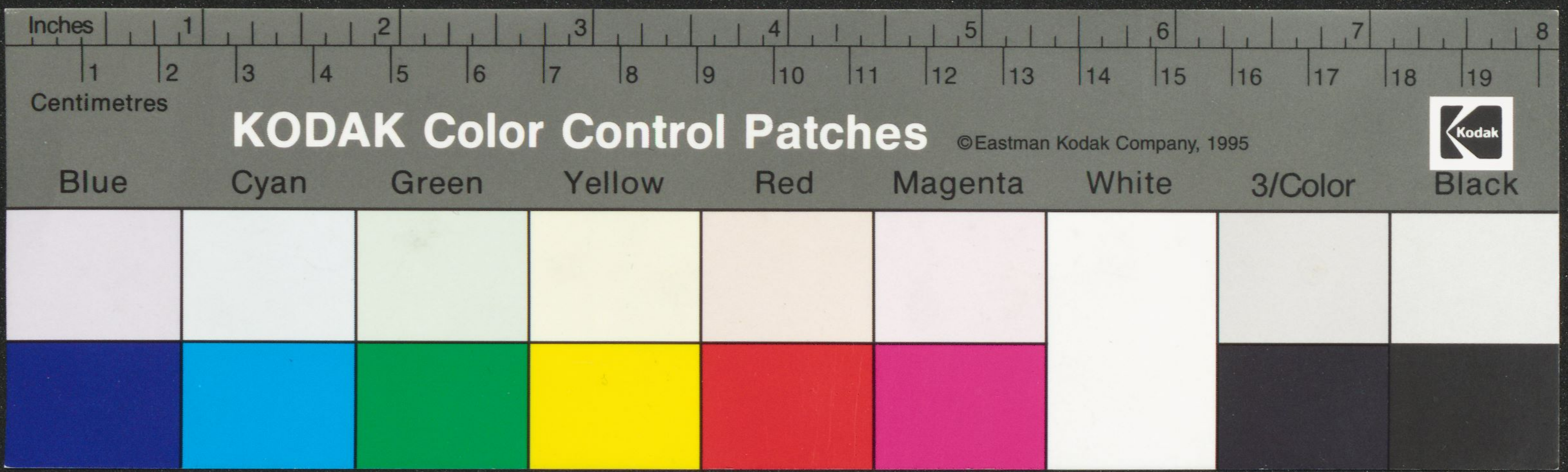
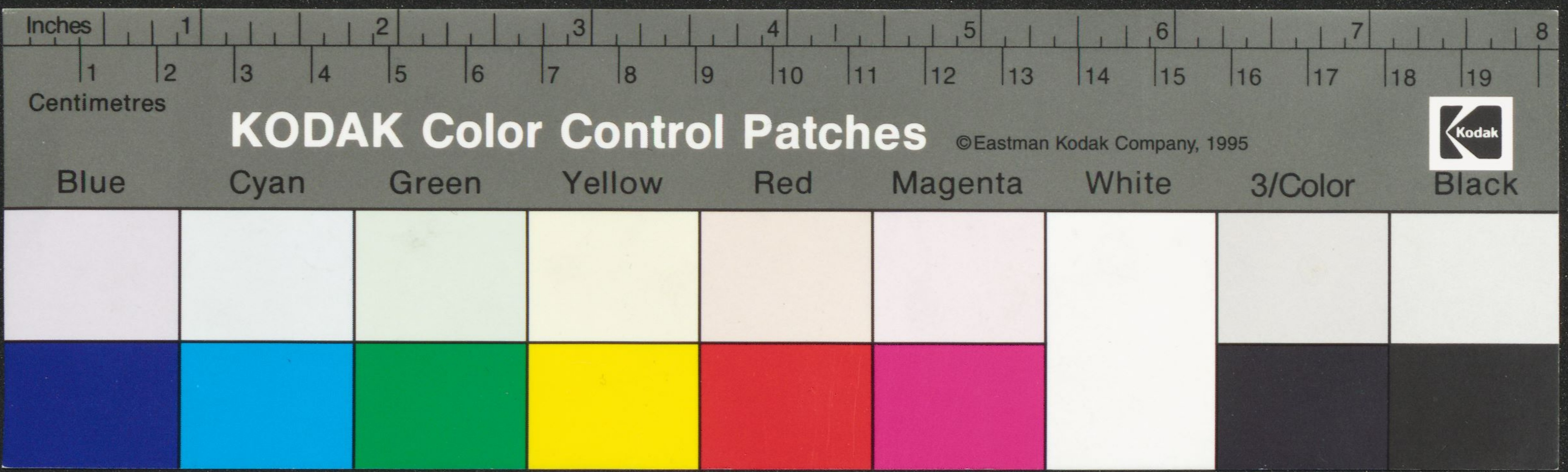


Fragment of a manuscript page with two columns of text in a medieval script. The text is written in dark ink on aged, yellowish-brown parchment. Several large initial letters are written in red ink, marking the beginning of new sections or paragraphs. The parchment shows signs of wear, including some staining and irregular edges. The script is dense and appears to be a form of Gothic or similar medieval bookhand.



Fragment of an ancient manuscript on aged, stained parchment. The text is written in a dark ink in a cursive script, likely a medieval or early modern hand. The parchment is heavily discolored and shows signs of significant wear, including tears and foxing. The text is arranged in two columns, with a large, ornate initial letter 'M' visible on the right side. The script is dense and difficult to decipher due to the age and damage of the document.





Fragment of an ancient manuscript with two columns of text in a cursive script. The parchment is heavily stained and damaged, particularly along the left edge. The text is written in dark ink with several large, ornate initials in red ink. The script is dense and appears to be a form of medieval or early modern shorthand or a specific dialect. There are some faint markings and a circular stamp at the bottom of the fragment.

*Handwritten marginal note in a cursive script, likely a library or archival stamp, located on the right edge of the manuscript fragment.*