

•METALNA•

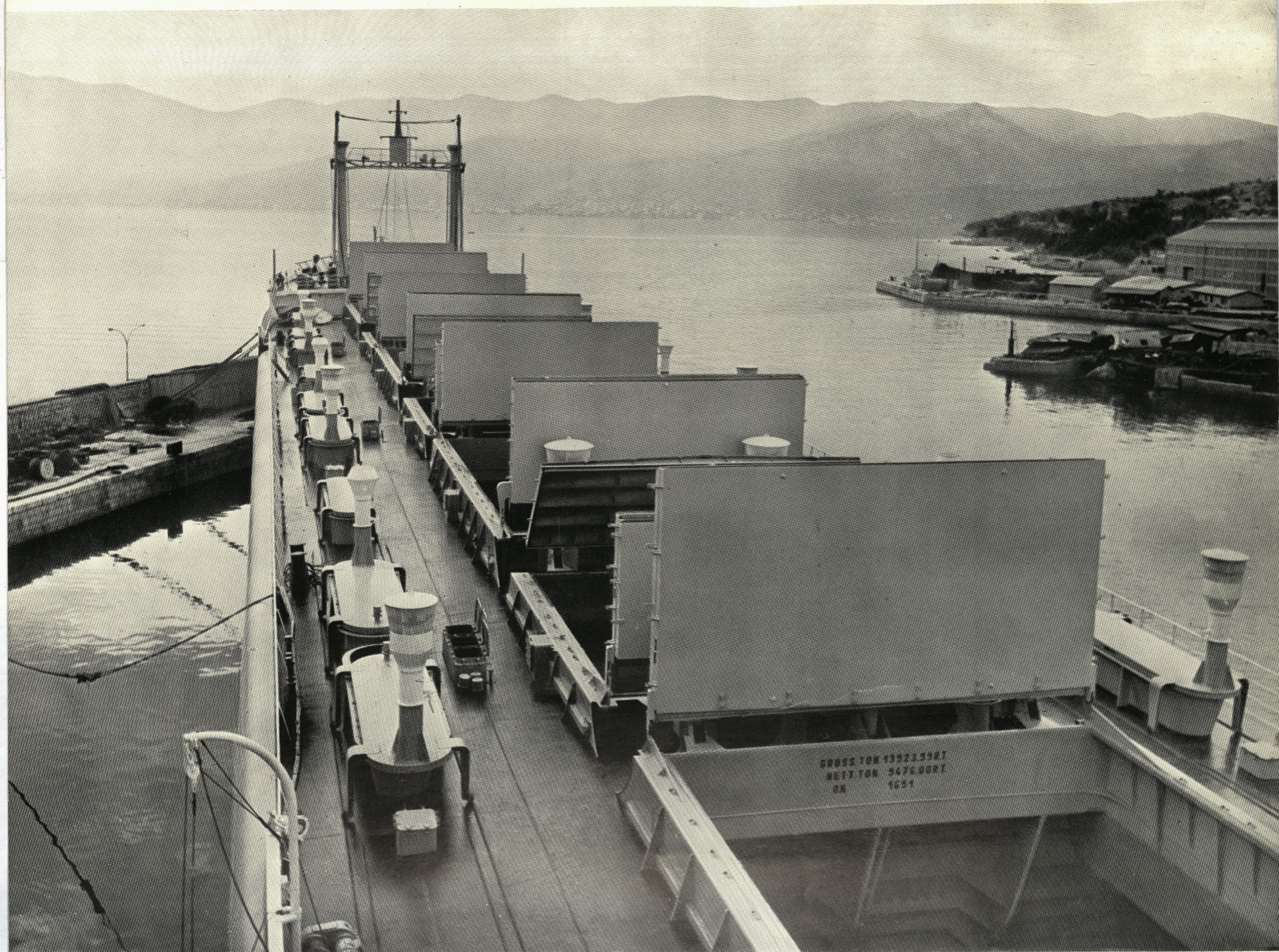


1963

MARIBOR · JUGOSLAVIJA



Univerzitetna knjižnica Maribor  
ZOT DT  
XXI-2 Metalna 63  
221503199



Hidravlični jekleni ladijski pokrovi tipa »Folding«, montirani na tovorni ladji

Hydraulically-operated steel hatch covers of type »Folding« installed on a cargo ship

## JANUAR

## JANUARY

NE SU		<b>6</b>	<b>13</b>	<b>20</b>	<b>27</b>
PO MO		<b>7</b>	<b>14</b>	<b>21</b>	<b>28</b>
TO TU	<b>1</b>	<b>8</b>	<b>15</b>	<b>22</b>	<b>29</b>
SR WE	<b>2</b>	<b>9</b>	<b>16</b>	<b>23</b>	<b>30</b>
ČE TH	<b>3</b>	<b>10</b>	<b>17</b>	<b>24</b>	<b>31</b>
PE FR	<b>4</b>	<b>11</b>	<b>18</b>	<b>25</b>	
SO SA	<b>5</b>	<b>12</b>	<b>19</b>	<b>26</b>	



•METALNA•

MARIBOR



Cestni most — eden od 250 raznovrstnih mostov, kolikor jih je podjetje izdelalo v preteklih 30 letih

Road bridge — one of the 250 various bridges constructed by our firm in the last 30 years

## FEBRUAR

## FEBRUARY

NE SU		<b>3</b>	<b>10</b>	<b>17</b>	<b>24</b>
PO MO		<b>4</b>	<b>11</b>	<b>18</b>	<b>25</b>
TO TU		<b>5</b>	<b>12</b>	<b>19</b>	<b>26</b>
SR WE		<b>6</b>	<b>13</b>	<b>20</b>	<b>27</b>
ČE TH		<b>7</b>	<b>14</b>	<b>21</b>	<b>28</b>
PE FR	<b>1</b>	<b>8</b>	<b>15</b>	<b>22</b>	<small>MAREC</small> <b>1</b>
SO SA	<b>2</b>	<b>9</b>	<b>16</b>	<b>23</b>	<b>2</b>



**•METALNA•**

MARIBOR



Portalni žerjav z grabilcem nosilnosti 30 ton na rudnem dvoru železarne

30-ton capacity crane with grab on ore yard of steelworks

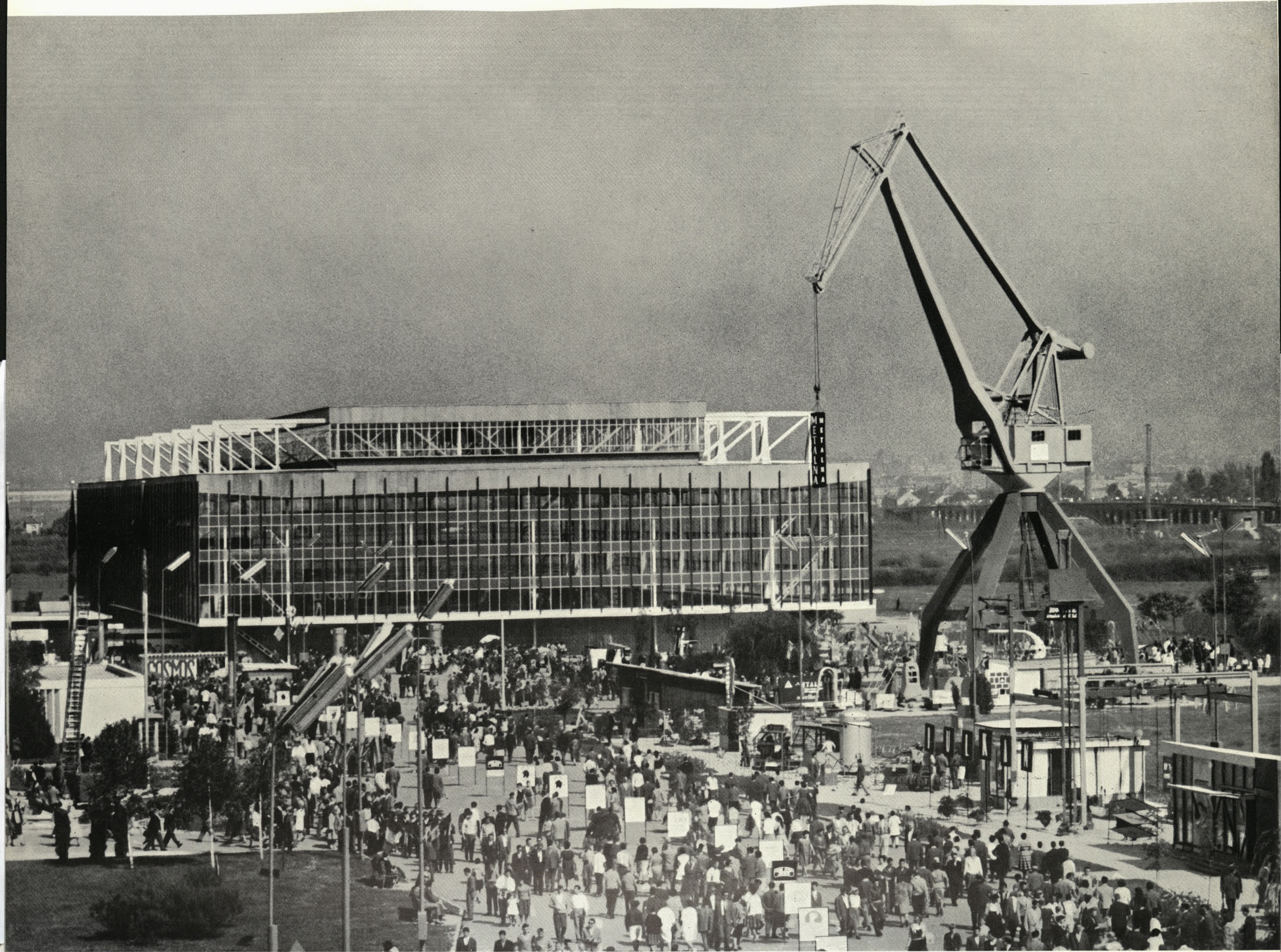
## MAREC

## MARCH

NE SU	<b>3</b>	<b>10</b>	<b>17</b>	<b>24</b>	<b>31</b>
PO MO	<b>4</b>	<b>11</b>	<b>18</b>	<b>25</b>	
TO TU	<b>5</b>	<b>12</b>	<b>19</b>	<b>26</b>	
SR WE	<b>6</b>	<b>13</b>	<b>20</b>	<b>27</b>	
ČE TH	<b>7</b>	<b>14</b>	<b>21</b>	<b>28</b>	
PE FR	<b>8</b>	<b>15</b>	<b>22</b>	<b>29</b>	
SO SA	<b>9</b>	<b>16</b>	<b>23</b>	<b>30</b>	



**•METALNA•**  
MARIBOR



Pristaniški žerjav nosilnosti 5 ton, razstavljen na Zagrebškem velesejmu l. 1962

5-ton capacity wharf crane, exhibited at Zagreb Fair in 1962

**APRIL**

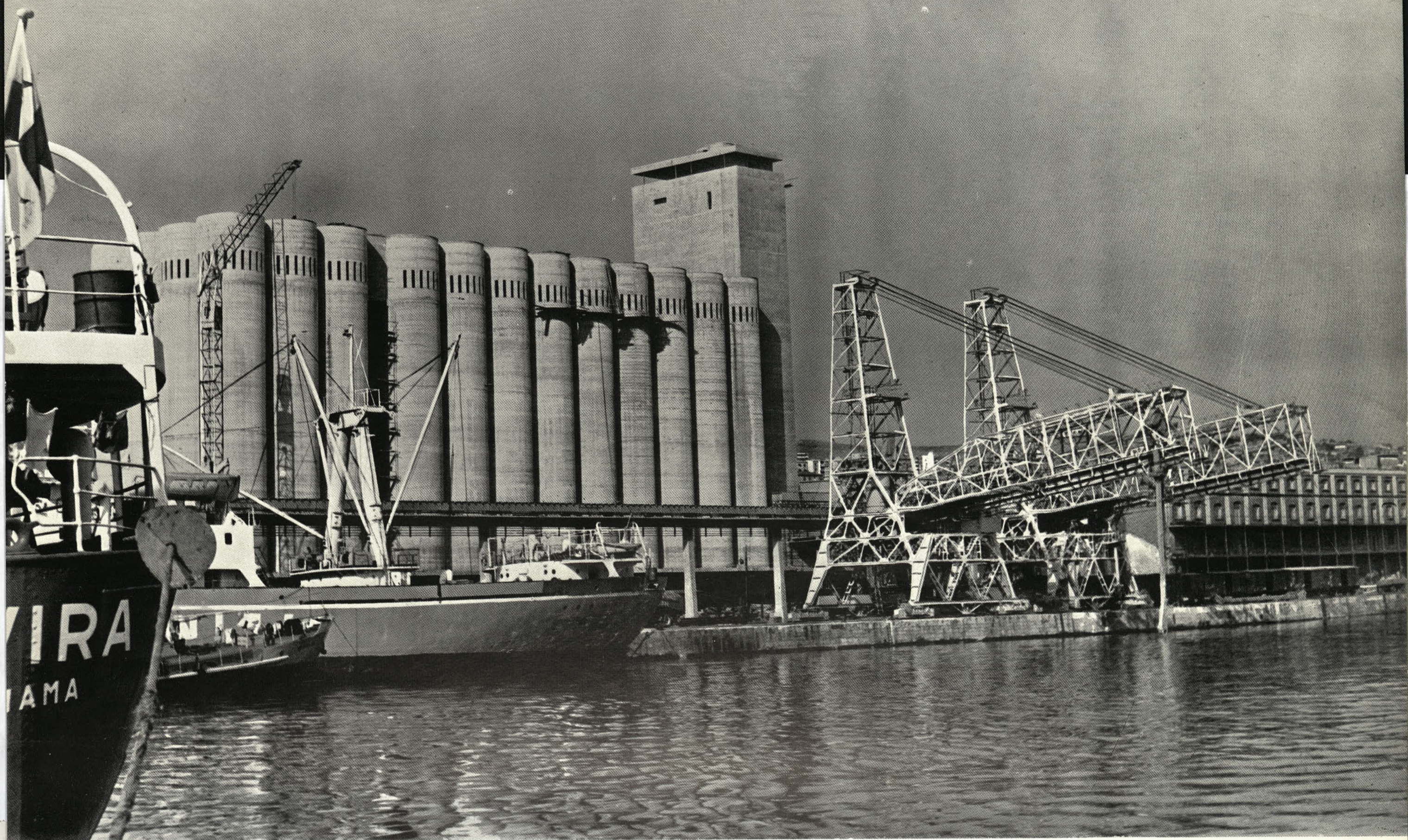
**APRIL**

NE SU		<b>7</b>	<b>14</b>	<b>21</b>	<b>28</b>
PO MO	<b>1</b>	<b>8</b>	<b>15</b>	<b>22</b>	<b>29</b>
TO TU	<b>2</b>	<b>9</b>	<b>16</b>	<b>23</b>	<b>30</b>
SR WE	<b>3</b>	<b>10</b>	<b>17</b>	<b>24</b>	
ČE TH	<b>4</b>	<b>11</b>	<b>18</b>	<b>25</b>	
PE FR	<b>5</b>	<b>12</b>	<b>19</b>	<b>26</b>	
SO SA	<b>6</b>	<b>13</b>	<b>20</b>	<b>27</b>	



**•METALNA•**

MARIBOR



Prekladalni mostovi za pristaniški silos s kapaciteto 400 t/h sodijo med največje v Evropi

400 t/h capacity loading bridges for harbour silo are among the largest in Europe

**MAJ**

**MAY**

NE SU		<b>5</b>	<b>12</b>	<b>19</b>	<b>26</b>
PO MO		<b>6</b>	<b>13</b>	<b>20</b>	<b>27</b>
TO TU		<b>7</b>	<b>14</b>	<b>21</b>	<b>28</b>
SR WE	<b>1</b>	<b>8</b>	<b>15</b>	<b>22</b>	<b>29</b>
ČE TH	<b>2</b>	<b>9</b>	<b>16</b>	<b>23</b>	<b>30</b>
PE FR	<b>3</b>	<b>10</b>	<b>17</b>	<b>24</b>	<b>31</b>
SO SA	<b>4</b>	<b>11</b>	<b>18</b>	<b>25</b>	JUNIJ <b>1</b>



**•METALNA•**  
MARIBOR



Cestni most varjene in kovičene izvedbe, dolg 372 m in širok 20 m.

Road bridge of welded and riveted construction, 372 m long and 20 m wide

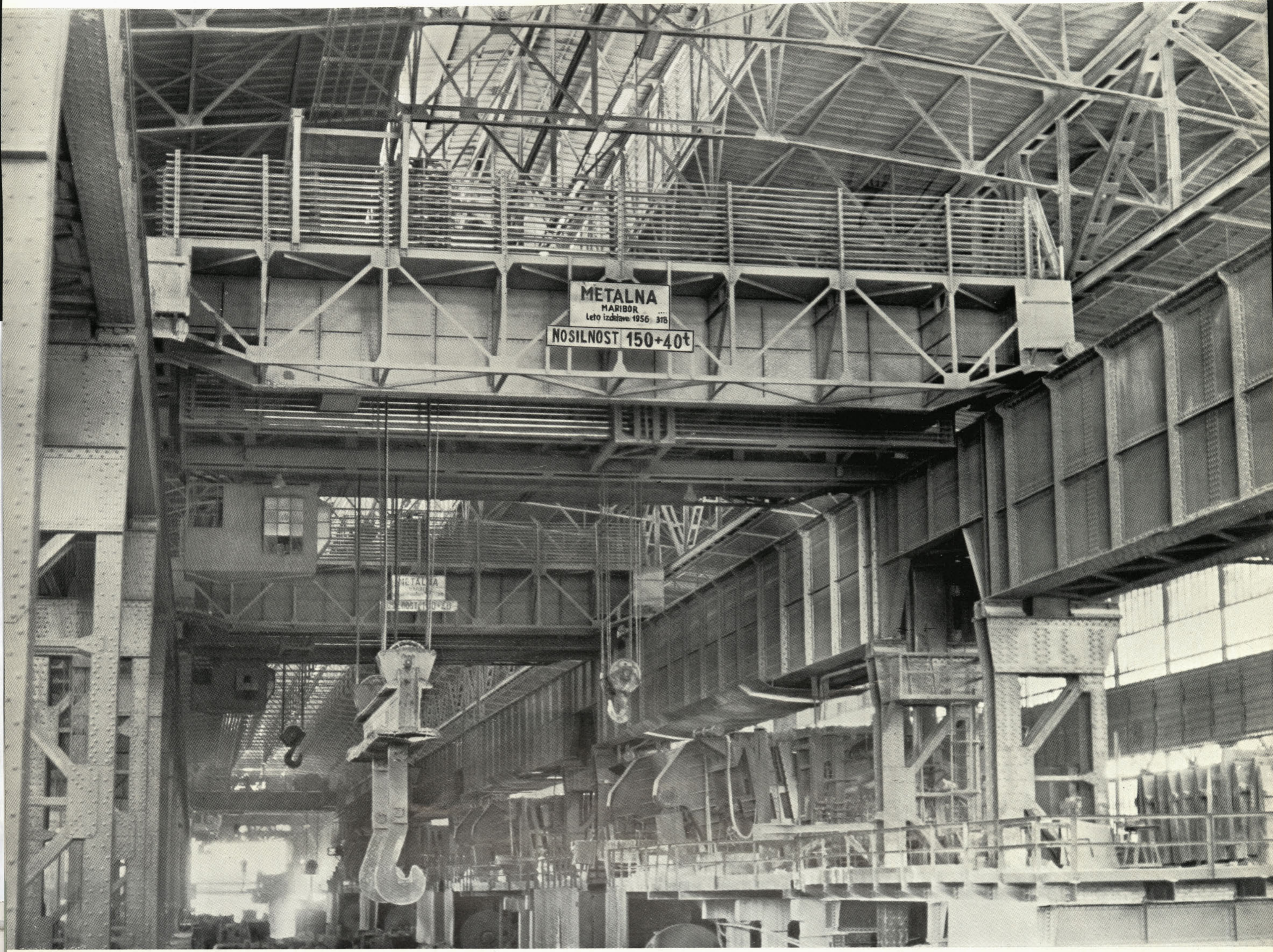
## JUNIJ

## JUNE

NE SU	<b>2</b>	<b>9</b>	<b>16</b>	<b>23</b>	<b>30</b>
PO MO	<b>3</b>	<b>10</b>	<b>17</b>	<b>24</b>	
TO TU	<b>4</b>	<b>11</b>	<b>18</b>	<b>25</b>	
SR WE	<b>5</b>	<b>12</b>	<b>19</b>	<b>26</b>	
ČE TH	<b>6</b>	<b>13</b>	<b>20</b>	<b>27</b>	
PE FR	<b>7</b>	<b>14</b>	<b>21</b>	<b>28</b>	
SO SA	<b>8</b>	<b>15</b>	<b>22</b>	<b>29</b>	



**•METALNA•**  
MARIBOR



Med 800 žerjavi, kolikor jih je izdelalo podjetje doslej, je na desetine žerjavov z nosilnostjo nad 100 ton

Among the 800 cranes manufactured by our factory so far, there are tens of cranes with a capacity over 100 tons

## JULIJ

## JULY

NE SU		<b>7</b>	<b>14</b>	<b>21</b>	<b>28</b>
PO MO	<b>1</b>	<b>8</b>	<b>15</b>	<b>22</b>	<b>29</b>
TO TU	<b>2</b>	<b>9</b>	<b>16</b>	<b>23</b>	<b>30</b>
SR WE	<b>3</b>	<b>10</b>	<b>17</b>	<b>24</b>	<b>31</b>
ČE TH	<b>4</b>	<b>11</b>	<b>18</b>	<b>25</b>	
PE FR	<b>5</b>	<b>12</b>	<b>19</b>	<b>26</b>	
SO SA	<b>6</b>	<b>13</b>	<b>20</b>	<b>27</b>	



**METALNA**  
MARIBOR





Ladjedelniški žerjav z nosilnostjo 45/15 t.

45/15-ton capacity shipyard crane

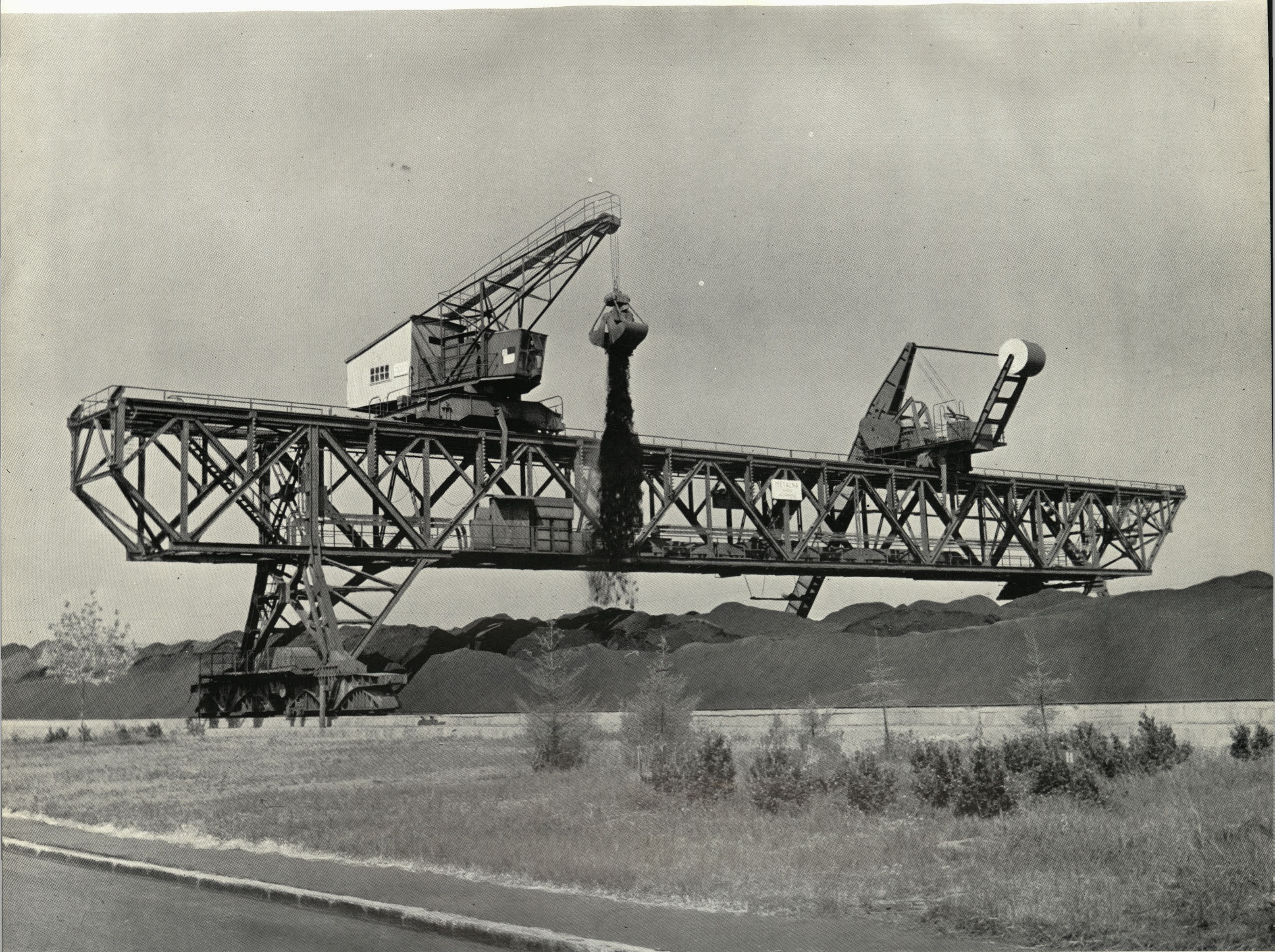
AVGUST

AVGUST

NE SU		4	11	18	25
PO MO		5	12	19	26
TO TU		6	13	20	27
SR WE		7	14	21	28
ČE TH	1	8	15	22	29
PE FR	2	9	16	23	30
SO SA	3	10	17	24	31



•METALNA•  
MARIBOR



Prekladalni most z grablcem in elevatorjem na skladišču premoga termoelektrarne

Storage bridge with grab and elevator on coal yard of thermal power plant

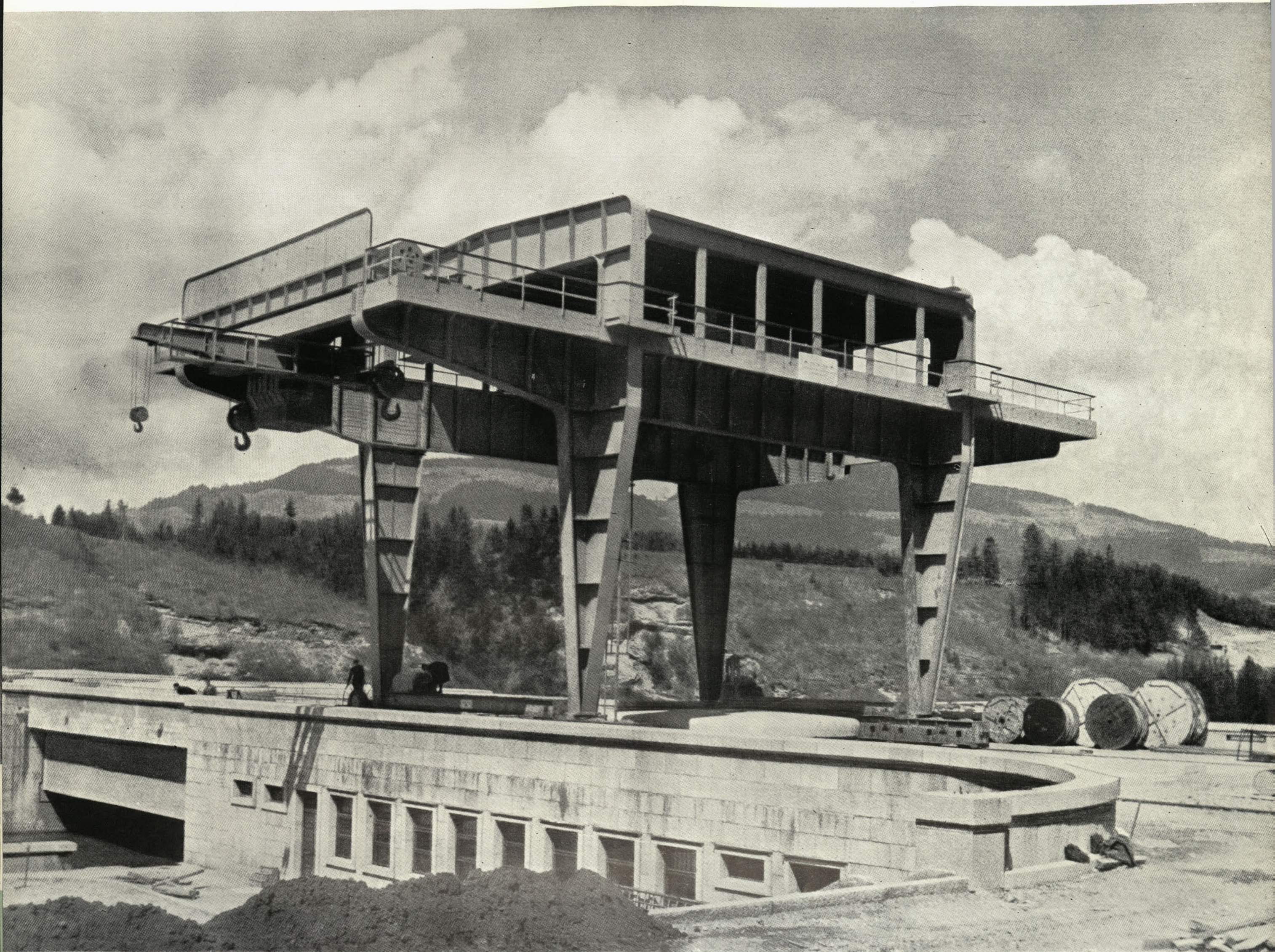
## SEPTEMBER

## SEPTEMBER

NE SU	<b>1</b>	<b>8</b>	<b>15</b>	<b>22</b>	<b>29</b>
PO MO	<b>2</b>	<b>9</b>	<b>16</b>	<b>23</b>	<b>30</b>
TO TU	<b>3</b>	<b>10</b>	<b>17</b>	<b>24</b>	
SR WE	<b>4</b>	<b>11</b>	<b>18</b>	<b>25</b>	
ČE TH	<b>5</b>	<b>12</b>	<b>19</b>	<b>26</b>	
PE FR	<b>6</b>	<b>13</b>	<b>20</b>	<b>27</b>	
SO SA	<b>7</b>	<b>14</b>	<b>21</b>	<b>28</b>	



**•METALNA•**  
MARIBOR



Kozičasti žerjav z nosilnostjo  $2 \times 75/20/5$  t, namenjen za montažo in remont težkih turbinskih delov in generatorjev

Gantry orane of  $2 \times 75/20/5$ -ton capacity used for installation and overhauling of heavy turbine parts and generators

## OKTOBER

## OCTOBER

NE SU		<b>6</b>	<b>13</b>	<b>20</b>	<b>27</b>
PO MO		<b>7</b>	<b>14</b>	<b>21</b>	<b>28</b>
TO TU	<b>1</b>	<b>8</b>	<b>15</b>	<b>22</b>	<b>29</b>
SR WE	<b>2</b>	<b>9</b>	<b>16</b>	<b>23</b>	<b>30</b>
ČE TH	<b>3</b>	<b>10</b>	<b>17</b>	<b>24</b>	<b>31</b>
PE FR	<b>4</b>	<b>11</b>	<b>18</b>	<b>25</b>	
SO SA	<b>5</b>	<b>12</b>	<b>19</b>	<b>26</b>	



**METALNA**

MARIBOR



Montaža 2040 m dolgega cevovoda s premerom cevi 2200 mm in 2100 mm

Installation of 2,040 m long penstock whose diameter is 2,200 mm and 2,100 mm

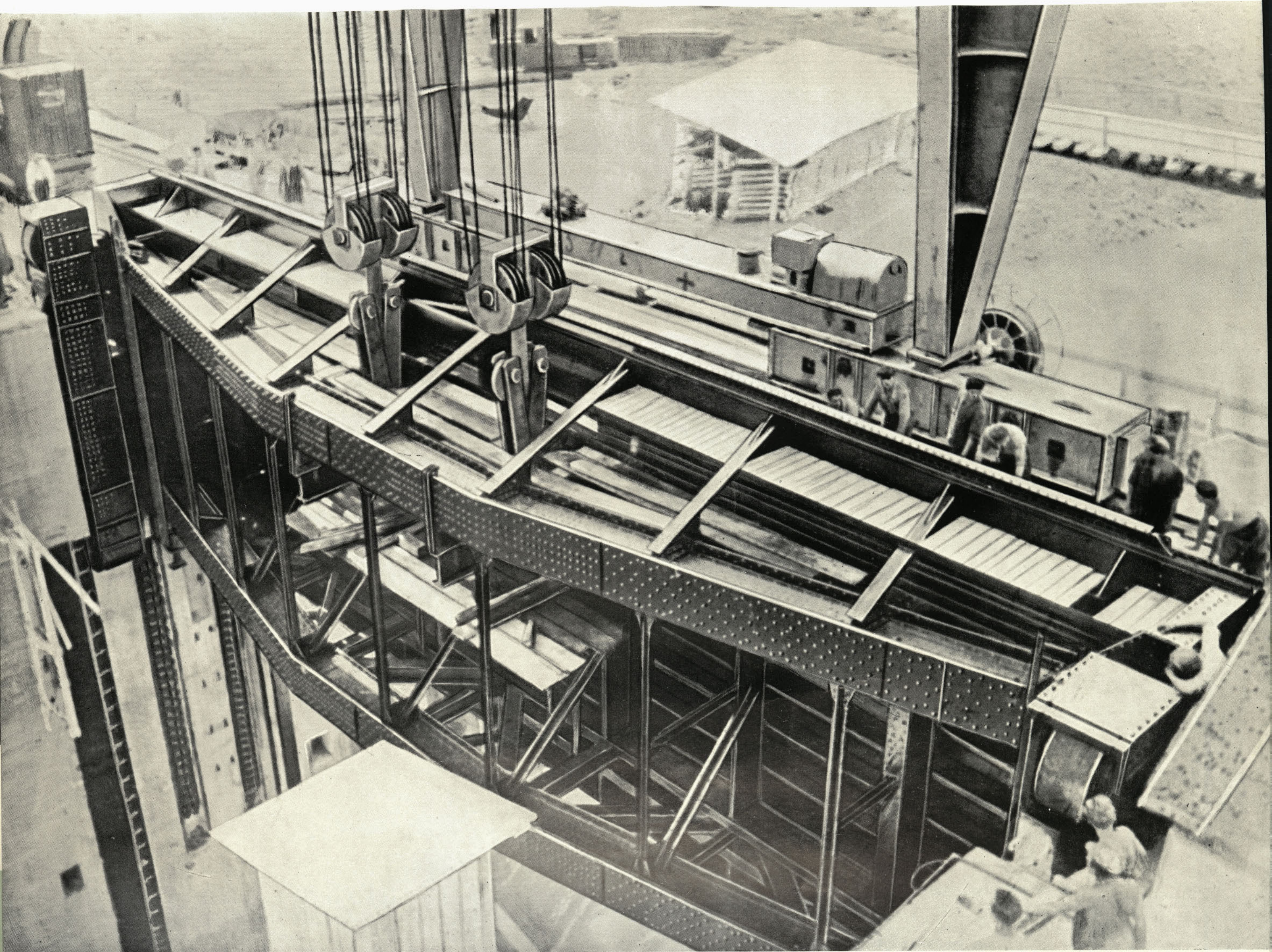
## NOVEMBER

## NOVEMBER

NE SU		<b>3</b>	<b>10</b>	<b>17</b>	<b>24</b>
PO MO		<b>4</b>	<b>11</b>	<b>18</b>	<b>25</b>
TO TU		<b>5</b>	<b>12</b>	<b>19</b>	<b>26</b>
SR WE		<b>6</b>	<b>13</b>	<b>20</b>	<b>27</b>
ČE TH		<b>7</b>	<b>14</b>	<b>21</b>	<b>28</b>
PE FR	<b>1</b>	<b>8</b>	<b>15</b>	<b>22</b>	<b>29</b>
SO SA	<b>2</b>	<b>9</b>	<b>16</b>	<b>23</b>	<b>30</b>



**•METALNA•**  
MARIBOR



Z našimi zapornicami so opremljeni številni energetske in melioracijski objekti v Jugoslaviji in nekaterih državah Azije in Afrike

Gates manufactured by »Metalna« have been supplied to numerous power plants and land-improvement and reclamation projects in Yugoslavia as well as in several countries of Asia and Africa

## DECEMBER

## DECEMBER

NE SU	<b>1</b>	<b>8</b>	<b>15</b>	<b>22</b>	<b>29</b>
PO MO	<b>2</b>	<b>9</b>	<b>16</b>	<b>23</b>	<b>30</b>
TO TU	<b>3</b>	<b>10</b>	<b>17</b>	<b>24</b>	<b>31</b>
SR WE	<b>4</b>	<b>11</b>	<b>18</b>	<b>25</b>	
ČE TH	<b>5</b>	<b>12</b>	<b>19</b>	<b>26</b>	
PE FR	<b>6</b>	<b>13</b>	<b>20</b>	<b>27</b>	
SO SA	<b>7</b>	<b>14</b>	<b>21</b>	<b>28</b>	



**•METALNA•**  
MARIBOR