

Zum Zweck bestimmt, sehr deutlich zu schreiben. — wo möglich auch hier,
soll eine Zeile zwischen Text und Lyrikung eingeschoben werden.

Text ist nicht zu schreiben, wohl aber hübsch musicalische Zeichen.

Slovenske pesmi

klavir

Disparie



Ms. 2645/1954

K slovesu, besede S. francéeta Drešerna.

Andante.

I.

Glav.

Glavovir.

Koj od me. ne preč o.
La. le mis. li vser. cu
Mo. ja sta. ra lju. ba

ko
ni
bo
Dreč obray ob. ra. čas mi. li?
Laj ni pred bi. lo ve. se. lo
Bo po. ter. pež. lji. vost mi. la
Kdo te me. ne lju. bit si. li?
ko, se za, te je u. ne. lo,
Zve. zo zme. no po. no. vi. la,

Kaj. si koj mi daj slo. vo
Kaj. ne bo pri. hodnje dni!
V za. kon da. la mi ro. ko.
Des. no ro. ko brez sker. lei
Ver. nil bo se prejs. ni čas;
Od po. mo. ci nje pod. pert

mf

Dej k pri-jaz-ni-mu slo-ve-su Solz vno-be-nim ni o- če-su žal be-
 Ho-dil po-ta bom te-môt-ne Ka-mor sré-če bo to- got-ne Gnal ne-
 No-sil bom živ-ljen-ja pé-zo, Dohler zma-ga sré-če je-zo Laid-ja

p

se-de v ustih ni, Des-no ro-ko brez sker- bi
 mi-li me u- kaz. Ver-nil bo se prej- ši
 ljub-ca, be-la smert. Od po-mo-ci nje pod- pert

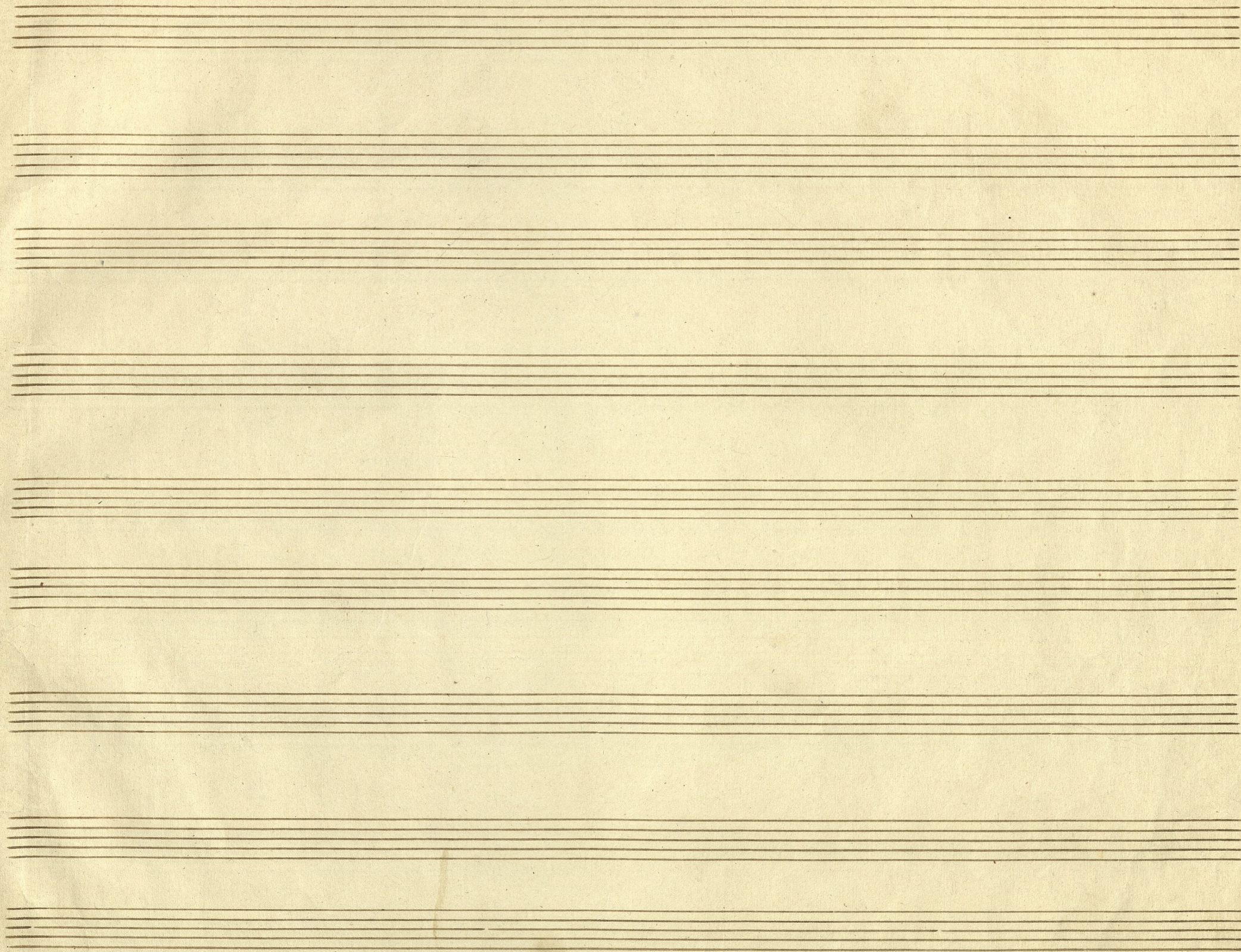
f

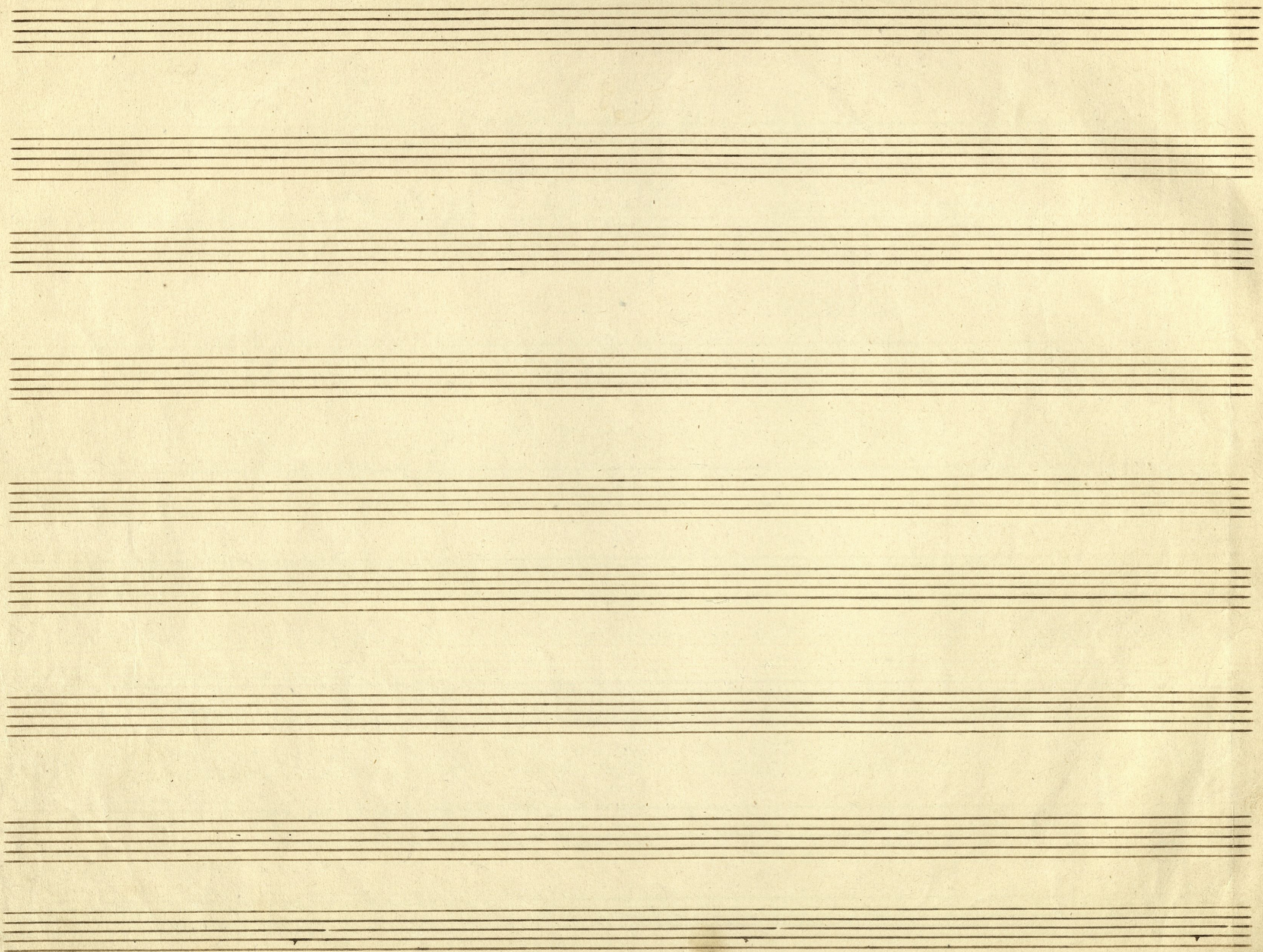
Dej k pri-jaz-ni-mu slo-ve-su Solz vno-be-nim ni o- če-su žal be-
 Ho-dil po-ta bom te-môt-ne Ka-mor sré-če bo to- got-ne Gnal ne-
 No-sil bom živ-ljen-ja pé-zo, Dohler zma-ga sré-če je-zo Laid-ja

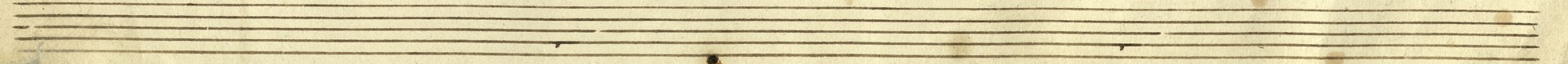
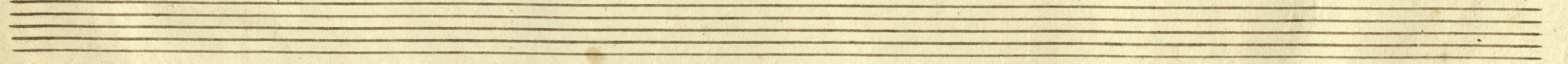
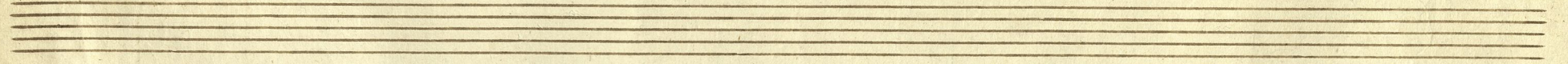
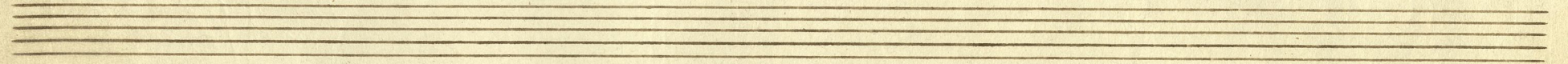
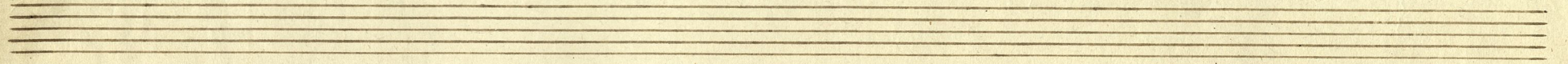
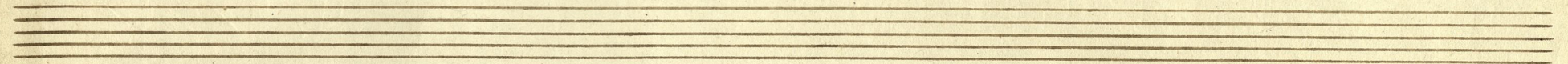
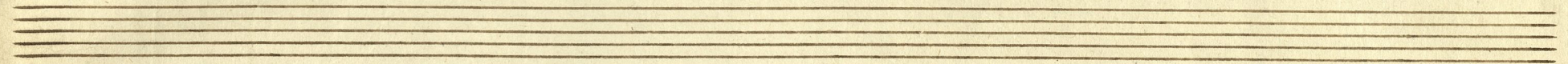
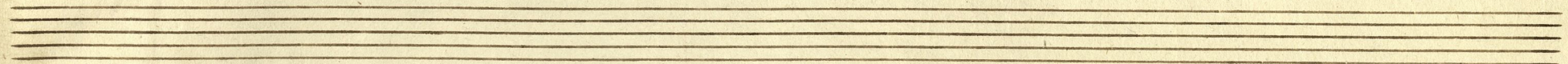
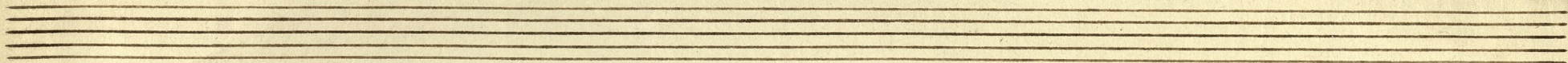
se. de v u. stih
mi. li me u.
ljub- ca, be- la

ni
kaz.
smert.









Handwritten musical notation on a single staff, featuring a series of notes and rests.

Handwritten musical notation on a single staff, featuring a series of notes and rests.

Handwritten musical notation on a single staff, featuring a series of notes and rests.

Handwritten musical notation on a single staff, featuring a series of notes and rests.

Handwritten musical notation on a single staff, featuring a series of notes and rests.

Handwritten musical notation on a single staff, featuring a series of notes and rests.

Handwritten musical notation on a single staff, featuring a series of notes and rests.

Handwritten musical notation on a single staff, featuring a series of notes and rests.

Handwritten musical notation on a single staff, featuring a series of notes and rests.