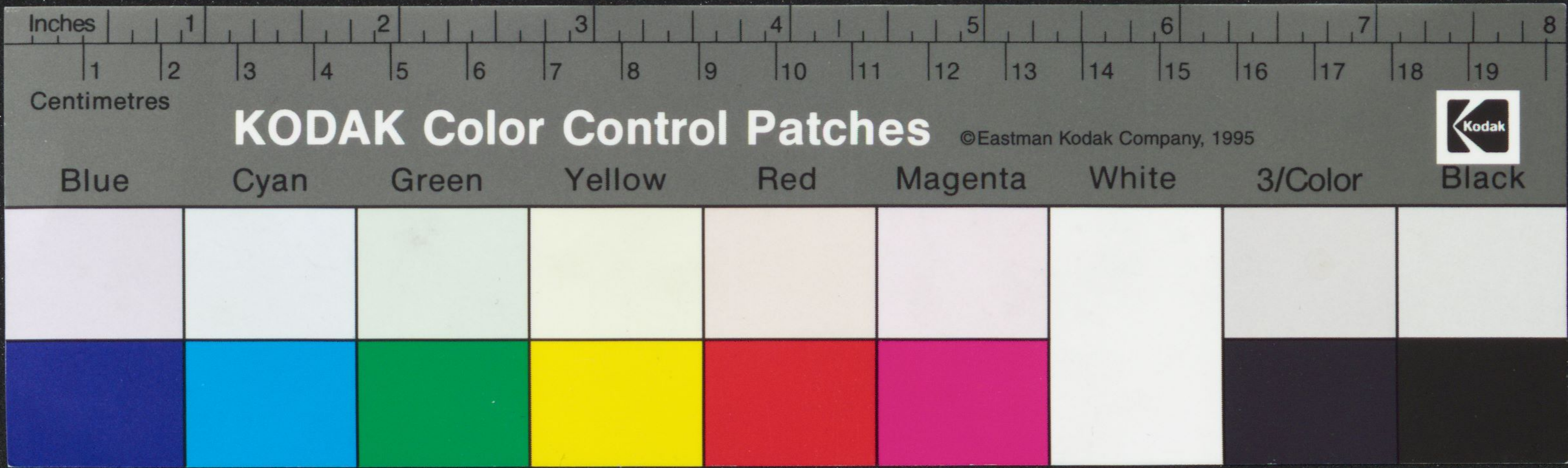


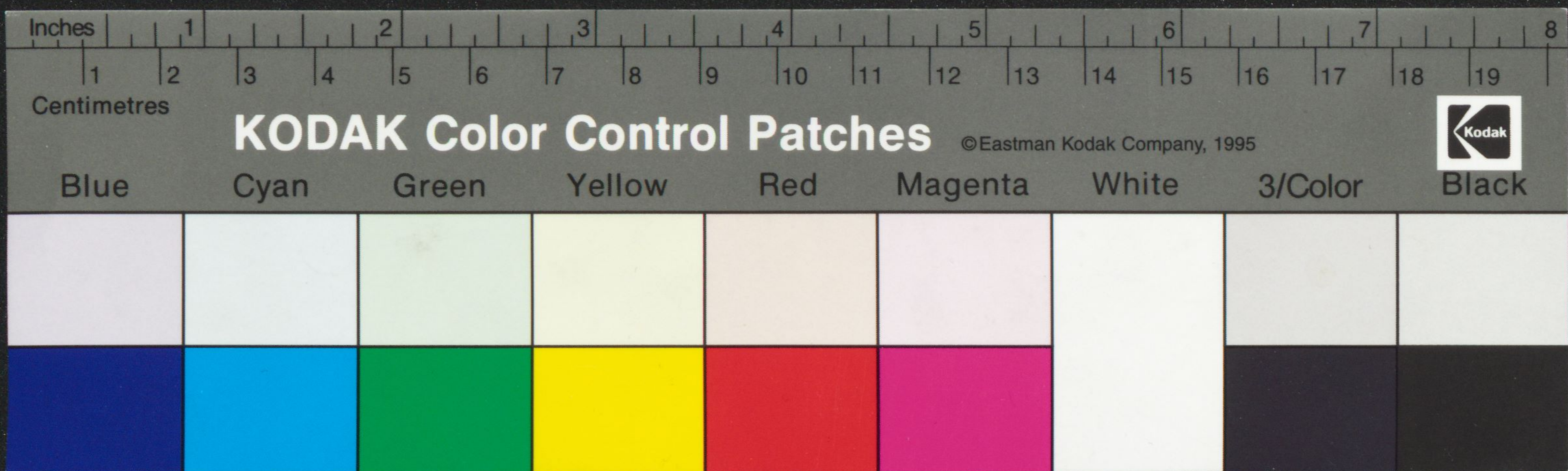


Fragment of an ancient manuscript with two columns of text in a non-Latin script, likely Georgian. The text is written in brown ink with red initials and rubrics. The parchment is heavily damaged, with a large dark stain on the left side and a green tassel on the right. The script is dense and appears to be a liturgical or historical text.



Handwritten text in an ancient script, likely Armenian, arranged in two columns. The text is written in dark ink on aged, yellowish paper. Several lines of text are written in red ink, serving as section headers or decorative elements. The script is dense and appears to be a form of liturgical or scholarly text. There are some dark spots and irregularities on the paper, possibly due to age or damage.





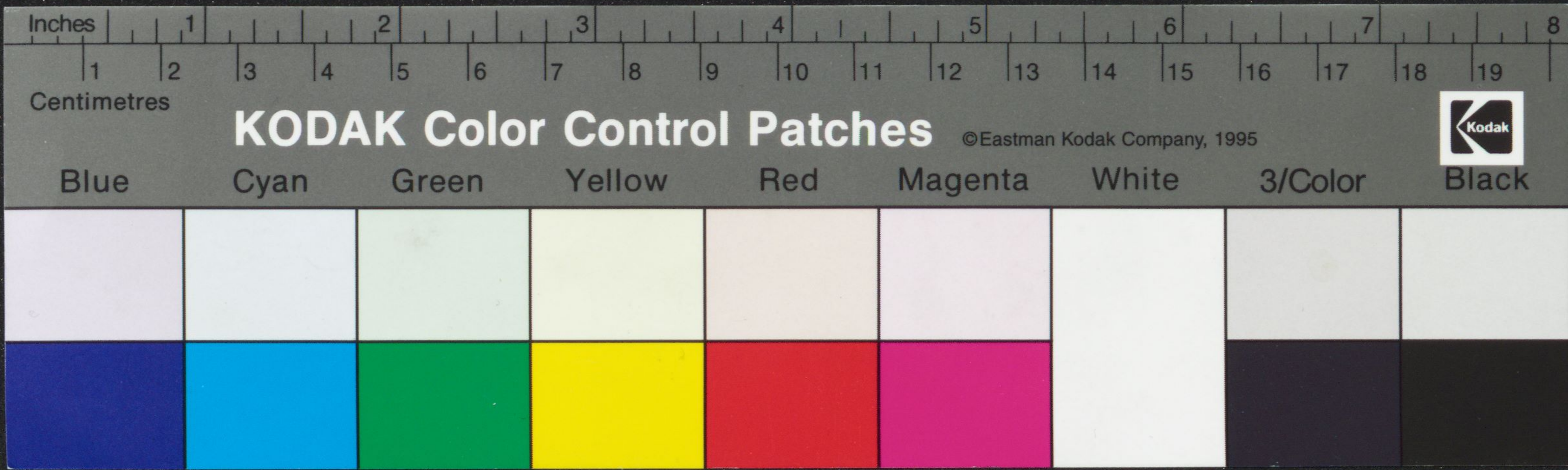
Fragment of a manuscript page on the left edge, showing partial lines of text in a dark script with red initials.

Manuscript page on the left, featuring dense text in a dark script with several large red initials. The text is arranged in approximately 25 lines. The paper shows signs of age and wear.

Manuscript page on the right, featuring dense text in a dark script with several large red initials. The text is arranged in approximately 25 lines. The paper shows signs of age and wear. At the bottom of the page, there is a circular stamp and a handwritten number '7'.



Handwritten number '7' in blue ink at the bottom right of the page.



Handwritten text in a medieval script, likely Latin or Greek, on the left page of the manuscript. The text is arranged in several lines, with some words in red ink.

Handwritten text in a medieval script, likely Latin or Greek, on the left page of the manuscript. The text is arranged in several lines, with some words in red ink. A large red initial 'X' is visible at the beginning of a section.

Handwritten text in a medieval script, likely Latin or Greek, on the right page of the manuscript. The text is arranged in several lines, with some words in red ink. A large red initial 'D' is visible at the beginning of a section.

101