

*Trijė nokturnai*

*13c kontrabas*



2.

I.

*molto vibrato*

*sul E 2-3"*

$\text{♩} = 60$

lb.  $5-6''$   $ca 5''$   $pp$  *cresc.*  $ff$  *dim.*

$4-8''$  *sempre meno vibrato*  $ca 2''$   $p$   $f > p$  *mf dim.*  $pp$   $5-6''$

*pizz. (vibrato)* *arco sul pont.* *loco espressivo*  $mp$   $p$   $pp$   $p$  *cresc.*

$b p$   $b q.$   $b q.$   $b q.$   $b q.$   $b q.$   $f$   $f > p$

$\# p$   $\# q$   $\# q$   $\# q$   $b o$   $b q$   $ff$   $fff$

$ca 4''$   $ca 4''$

$2-3''$   $3-4''$  *sul A*  $p$   $pp$   $ca 3''$

$ca 2''$   $6-7''$   $2/5''$   $pppp$

II.

$\text{♩} = 60$  *pizz.*  $ff$  *sempre* *arco*

*pizz.*  $p$  *sempre*



YID 1811/1999



arco  
 ♭<sup>b</sup> 4/4  
 ♭<sup>b</sup> 4/4  
 ♭<sup>b</sup> 4/4  
 ♭<sup>b</sup> 4/4

arco 4-5"  
 pissa  
 p  
 ff  
 p

mf  
 f  
 ppp  
 3  
 3  
 1/4

merc.  
 f  
 p  
 ff

ff sempre  
 pissa  
 arco  
 ♭<sup>b</sup>

♭<sup>b</sup>  
 p  
 p sub.  
 pissa  
 ff

fff  
 1'40"

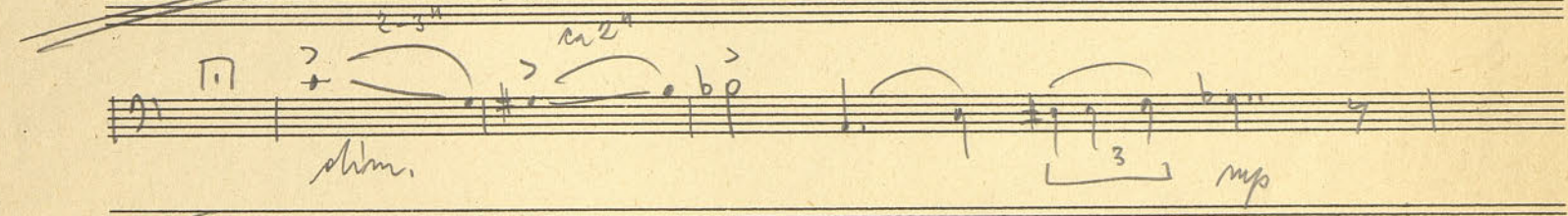
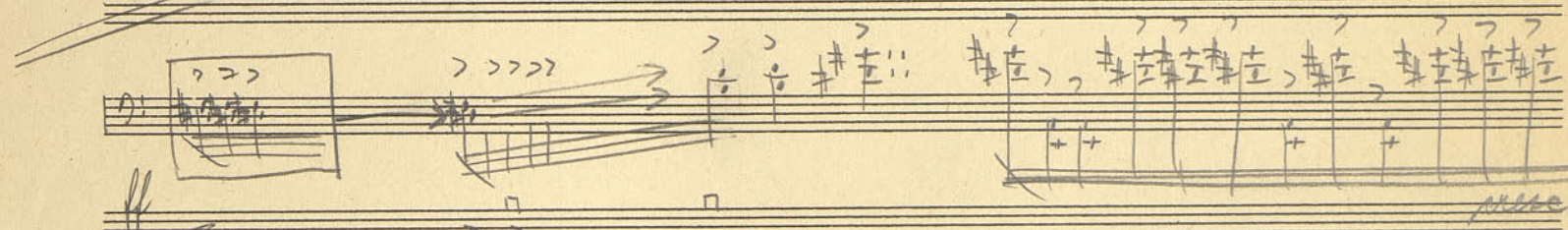
♩ = 60  
 p  
 merc.  
 ff

ff sempre  
 arco  
 pissa

3



410



2'45"

6'30"



Simonek

Ljubljana, 24. IV. 1972.



A single staff of music with a treble clef on the left and a fermata on the right. The staff contains a sequence of notes: a quarter note G4, an eighth note A4, a quarter note B4, an eighth note C5, a quarter note D5, an eighth note E5, a quarter note F5, an eighth note G5, a quarter note A5, an eighth note B5, a quarter note C6, an eighth note D6, a quarter note E6, an eighth note F6, a quarter note G6, an eighth note A6, a quarter note B6, an eighth note C7, and a quarter note D7. The notes are connected by a horizontal line, and there are some additional markings above the staff.

A series of 18 empty musical staves, each consisting of five horizontal lines, arranged vertically below the first staff.