

PRIMOŽ RAMOVŠ
(1984)

NIHIL OBSTAT

ZA
KLAVIR



MD 1554/1999

$\text{♩} = 60$

Handwritten musical notation for the first system, featuring a grand staff with treble and bass clefs. It includes notes, rests, and dynamic markings such as 'f' and 'pp'.

Handwritten musical notation for the second system, including a grand staff and a piano part with a 'poco' marking and a series of chords.

Handwritten musical notation for the third system, featuring a grand staff and a piano part with a 'cresc.' marking and a series of notes.

Handwritten musical notation for the fourth system, including a grand staff and a piano part with a 'cresc.' marking and a series of notes.

Handwritten musical notation for the fifth system, featuring a grand staff and a piano part with 'poco' markings and a series of notes.

This image shows a page of musical manuscript paper with 12 systems of staves. Each system consists of two five-line staves. The first system contains faint handwritten notes and symbols. The second system contains some faint markings. The third system is mostly blank. The fourth system contains a series of vertical lines, possibly representing a scale or a specific notation. The fifth system contains some faint markings. The sixth system contains some faint markings. The seventh system contains some faint markings. The eighth system contains some faint markings. The ninth system contains some faint markings. The tenth system contains some faint markings. The eleventh system contains some faint markings. The twelfth system contains some faint markings.

Handwritten musical notation for the first system, featuring a grand staff with two systems of staves. The first system has a 2-measure rest, followed by a 3-measure rest with "resc." written below, and then four 2-measure rests. The notation includes various chords and melodic lines.

Handwritten musical notation for the second system, showing a grand staff with a 5-measure rest, a 3-measure rest with "resc." and "ff" markings, and a melodic line with "resc." and "ff" markings.

Handwritten musical notation for the third system, featuring a grand staff with various chords, rests, and melodic lines, including "resc." and "ff" markings.

Handwritten musical notation for the fourth system, showing a grand staff with a 4-measure rest and a melodic line with various notes and accidentals.

Handwritten musical notation for the fifth system, featuring a grand staff with 3-measure and 5-measure rests, and various chords and melodic lines.

Handwritten musical notation on a page with 12 staves. The notation is extremely faint and illegible. It appears to be a sequence of notes and rests, possibly with some structural markings like bar lines or repeat signs. The paper is aged and shows some staining.

Handwritten musical notation for the first system. The treble staff begins with a *pp* dynamic marking and contains several notes with stems. Above the treble staff, there are three vertical chord symbols: $b \begin{matrix} \# \\ \# \\ \# \end{matrix}$, $\begin{matrix} \# \\ \# \\ \# \end{matrix}$, and $b \begin{matrix} \# \\ \# \\ \# \end{matrix}$. The bass staff contains a few notes and rests. A bracket spans across both staves.

Handwritten musical notation for the second system. The treble staff has a *pp* dynamic marking and contains notes with stems. The bass staff has a *pp* dynamic marking and contains notes with stems. A bracket spans across both staves.

Handwritten musical notation for the third system. The treble staff features a long horizontal line with a tc^b marking above it and a "5''" label. The bass staff has a *pp* dynamic marking and a long horizontal line. A bracket spans across both staves.

Handwritten musical notation for the fourth system. The treble staff has a *pp* dynamic marking and a "3''" label above a series of notes. The bass staff has a *pp* dynamic marking and a "4''" label above a series of notes. A bracket spans across both staves.

Handwritten musical notation for the fifth system. The treble staff has a *pp* dynamic marking and contains notes with stems. The bass staff has a *pp* dynamic marking and contains notes with stems. A bracket spans across both staves.

Three boxed musical diagrams arranged horizontally, connected by arrows. The first box contains a chord structure with a "2''" label. The second box contains a chord structure with a "2''" label. The third box contains a chord structure with a "1''" label.

Handwritten musical notation on a five-line staff, including notes, rests, and a key signature of one sharp (F#).

Handwritten musical notation on a five-line staff, including notes and rests.

Handwritten musical notation on a five-line staff, including notes and rests.

Handwritten musical notation on a five-line staff, including notes and rests.

Handwritten musical notation on a five-line staff, including notes and rests.

Handwritten musical notation on a five-line staff, including notes and rests.

Handwritten musical notation on a five-line staff, including notes and rests.

Handwritten musical notation on a five-line staff, including notes and rests.

Handwritten musical notation on a five-line staff, including notes and rests.

Handwritten musical notation on a five-line staff, including notes and rests.

Handwritten musical notation on a five-line staff, including notes and rests.

Handwritten musical notation on a five-line staff, including notes and rests.

Handwritten musical notation on a five-line staff, including notes and rests.

Musical notation system 1: Treble and bass staves. Four boxed chord diagrams are shown in the treble clef, connected by arrows and labeled "1". The final chord is labeled "2" and includes a sharp sign. The bass clef has a single note with a sharp sign and the instruction "pp sempre".

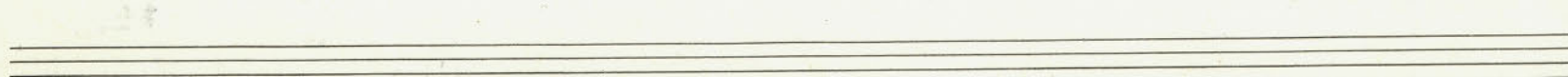
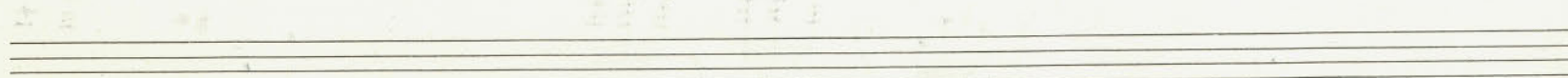
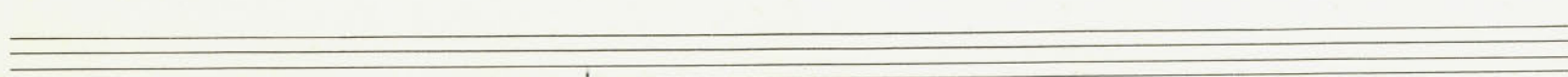
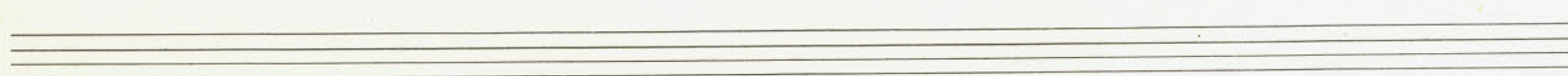
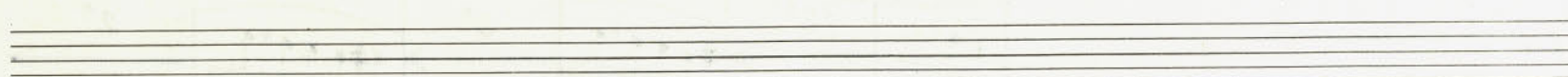
Musical notation system 2: Treble and bass staves. A boxed chord diagram in the bass clef is labeled "3". To its right, a melodic line in the treble clef consists of several notes, with a sharp sign below it. The instruction "pp" is written below the notes.

Musical notation system 3: Treble and bass staves. Three boxed chord diagrams are shown in the bass clef, connected by arrows and labeled "2". Above the first two boxes are two sets of notes with sharp signs. Above the third box is a set of notes with a sharp sign. The instruction "pp" is written below the notes.

Musical notation system 4: Treble and bass staves. A long melodic line is written across both staves, starting with a sharp sign and ending with a double fermata and the instruction "ff". The word "more" is written above the line.

Musical notation system 5: Treble and bass staves. A melodic line in the treble clef is shown, with a sharp sign below it. Below the line is the instruction "p sempre". There are also some chord diagrams and notes in the bass clef.

Handwritten text in boxes at the top of the page, possibly indicating page numbers or section markers.



sva →

sempre più presto

sempre più presto

p *rinc.*

5"

sempre più presto

3"

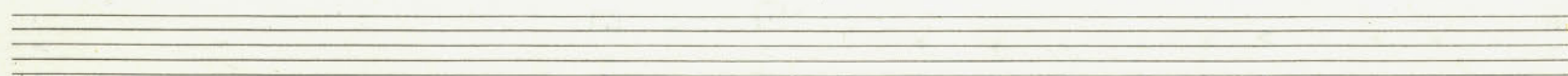
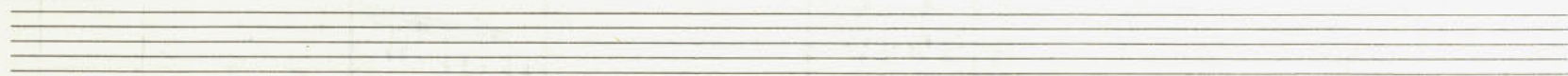
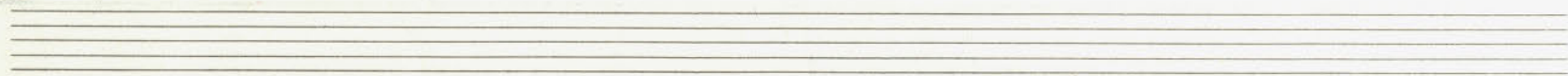
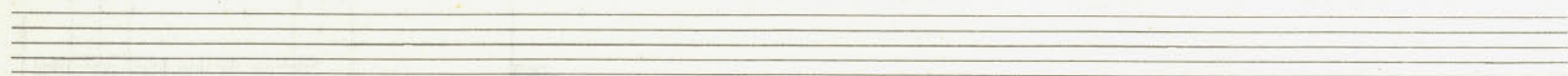
2"

sempre più presto

1" 1" 1" 1"

4"

sempre più presto



Handwritten musical notation on a grand staff. The upper staff contains a melodic line with various accidentals (flats and naturals) and a slur. The lower staff contains a bass line with notes and accidentals. The word "pva" with an arrow is written above the first measure of both staves.

Handwritten musical notation on a grand staff. The upper staff has notes with accidentals and a slur. The lower staff has notes with accidentals and a slur. The word "pva" with an arrow is written above the first measure of the lower staff. There are also some square boxes containing notes and accidentals.

Handwritten musical notation on a grand staff. The upper staff has notes with accidentals. The lower staff has notes with accidentals. The word "pva" with an arrow is written below the lower staff.

Handwritten musical notation on a grand staff. The upper staff has a boxed-in melodic phrase with a slur, followed by a long horizontal line with a double bar line and a fermata-like symbol. The number "7" is written above this line. The lower staff has notes with accidentals and a slur. The word "mp" is written below the first measure of the lower staff. The word "pva" with an arrow is written below the lower staff.

Handwritten musical notation on a grand staff. The upper staff has notes with accidentals and a slur. The lower staff has notes with accidentals and a slur. The word "tr" is written above the first measure of the upper staff. The word "dim." is written below the first measure of the lower staff. The word "pp" is written at the end of the lower staff.

