

PRIMOŽ RAMOVŠ

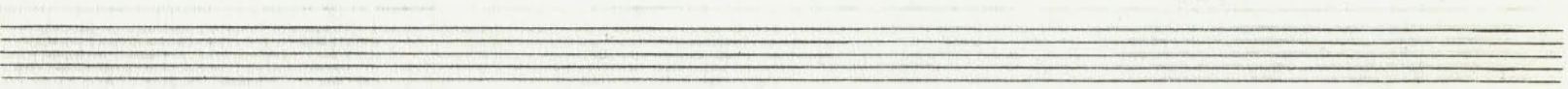
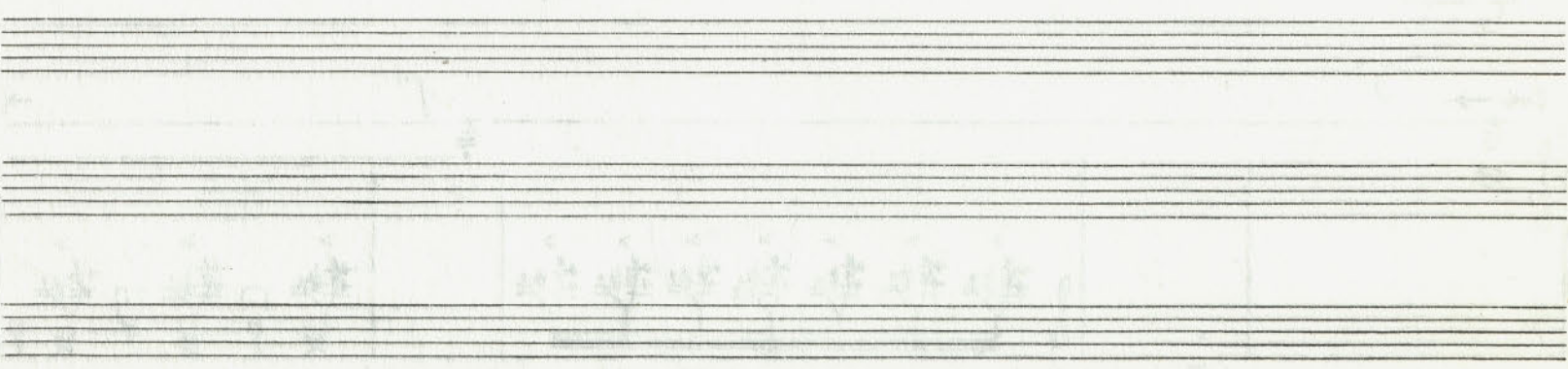
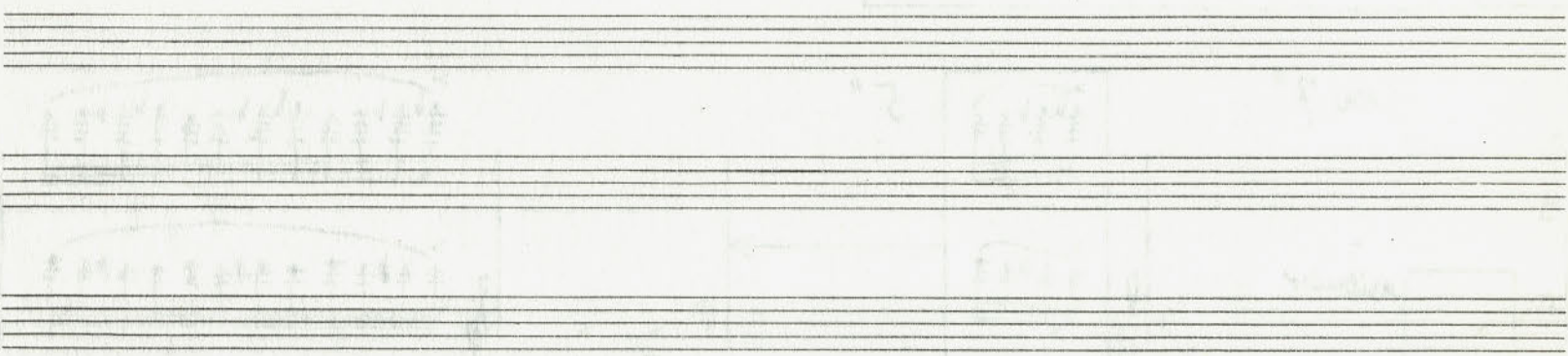
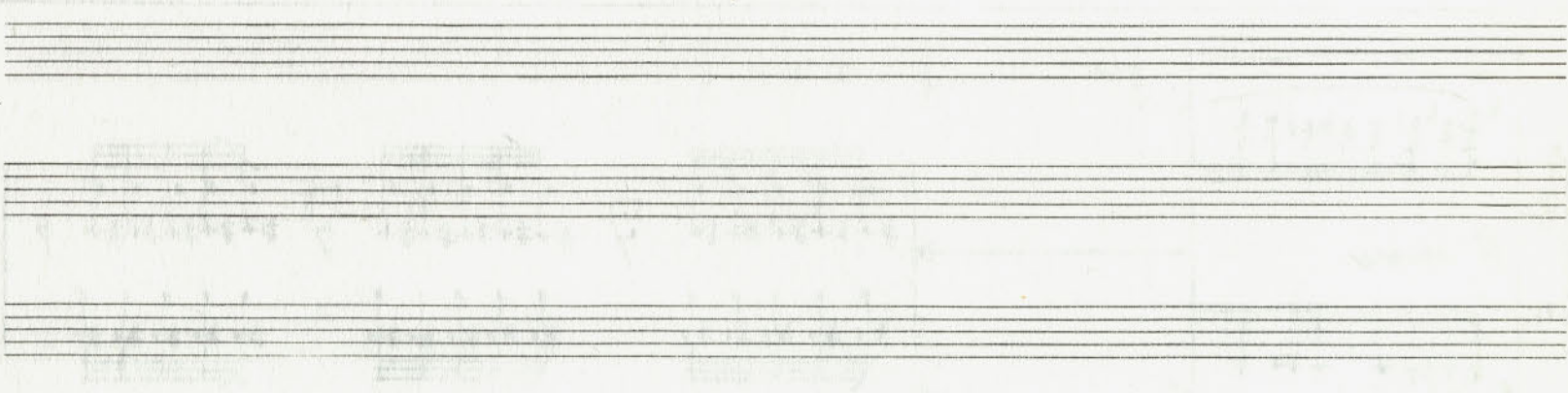
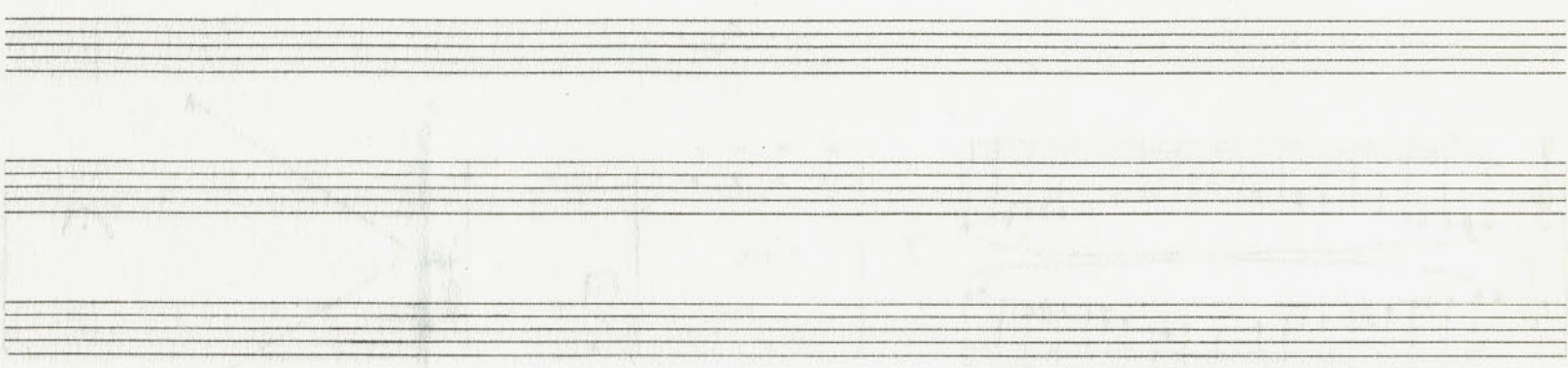
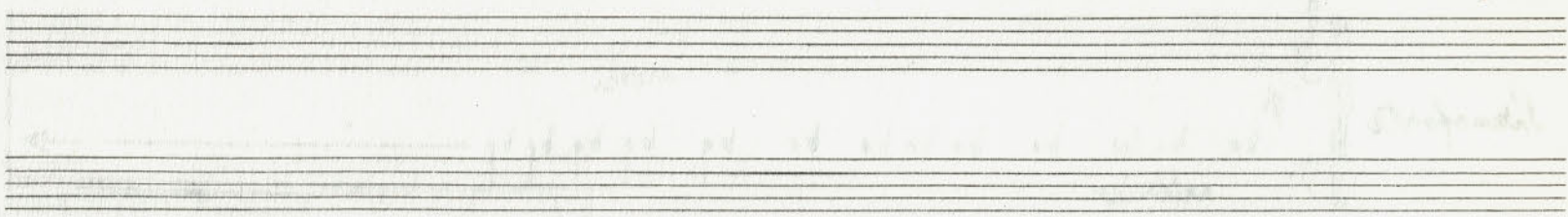
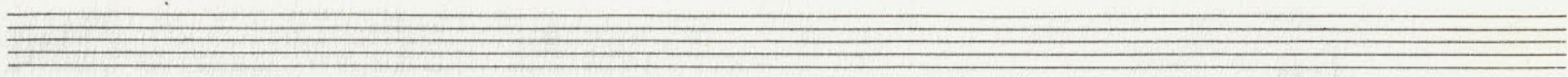
(1995)

VIVAT, CRESCAT, FLOREAT

ZA
KLAVIR



MTD 1878/1999



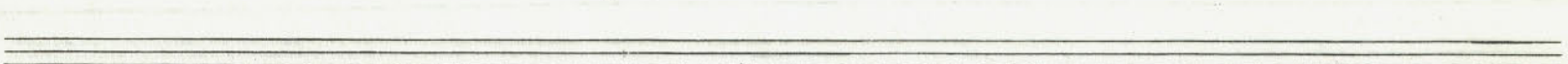
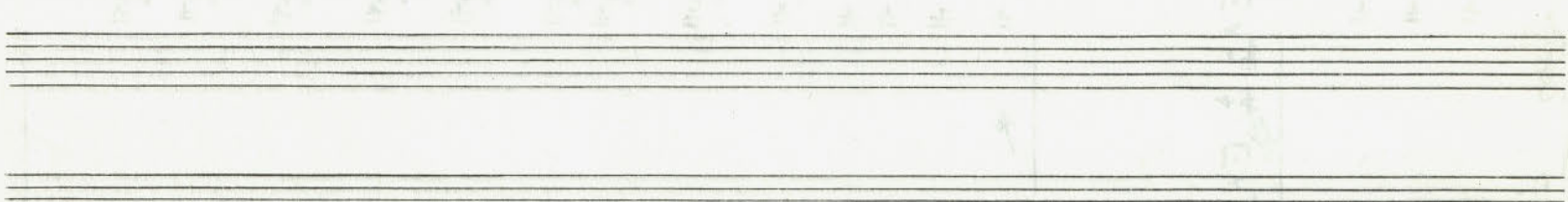
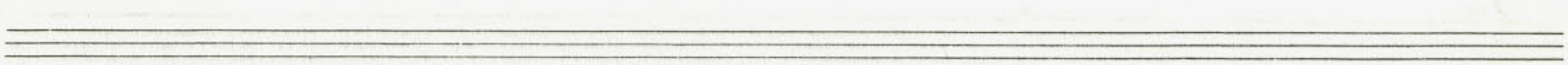
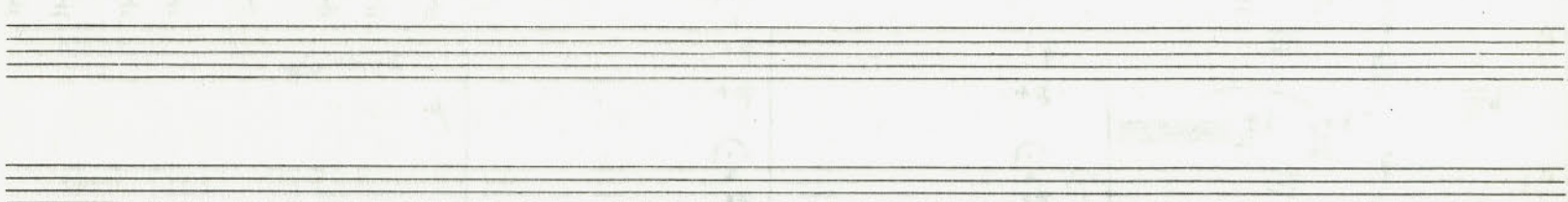
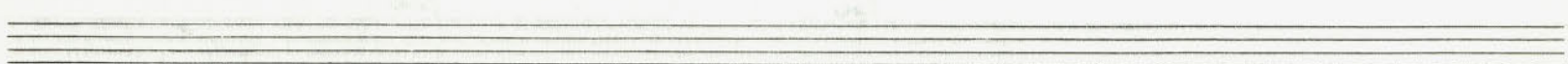
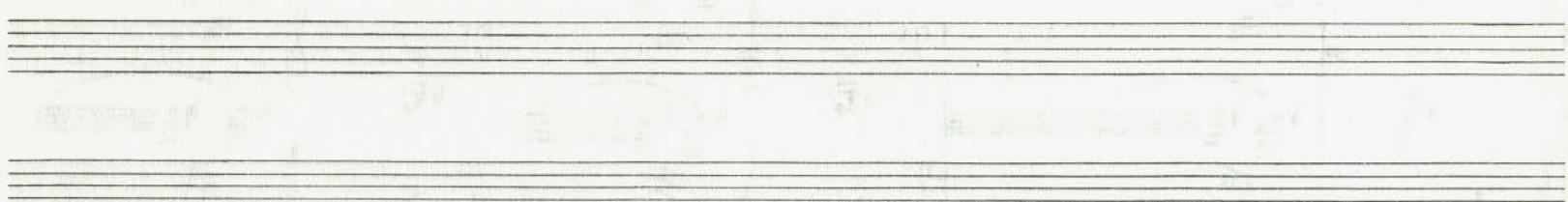
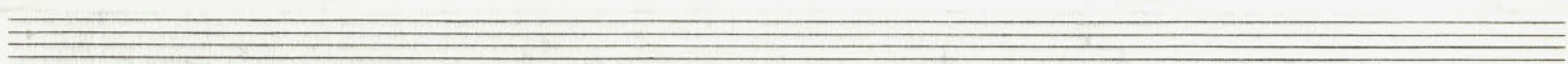
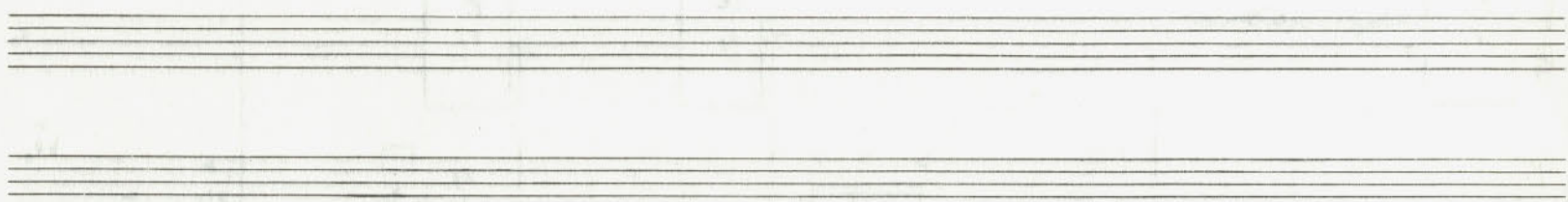
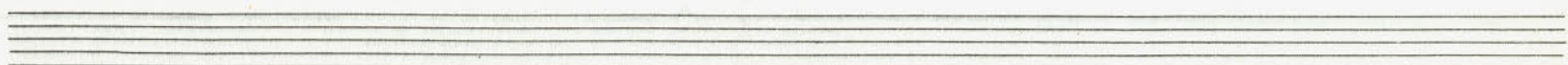
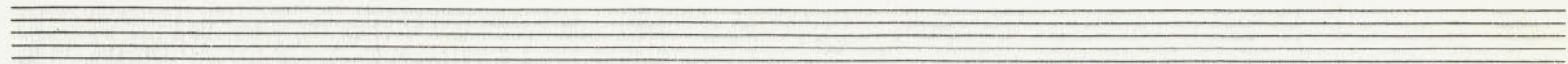
Handwritten musical notation for the first system. The left hand features a descending line with arrows. The right hand contains a sequence of chords with flats, including a '5' marking and a '7' marking.

Handwritten musical notation for the second system. The treble clef staff has a '5' marking and the text 'sempre ritmico'. The bass clef staff contains chords with flats and a '3' marking.

Handwritten musical notation for the third system. The grand staff shows complex chordal structures with flats and sharps. A '5' marking is present in the bass clef staff.

Handwritten musical notation for the fourth system. The grand staff includes a '5' marking and the text 'ritmico' and 'p'.

Handwritten musical notation for the fifth system. The grand staff features a sequence of chords with flats and a 'p' marking.



ca 5"

Handwritten musical notation for the first system. The right hand has a melodic line with notes marked with flats and a fermata. The left hand has a bass line with notes marked with sharps. Dynamics include *p*, *pp*, *ff*, and *pp*. A *ritmico* marking is present in the right hand. A *pre* marking with an arrow points to the start of the piece.

Handwritten musical notation for the second system. The right hand has a melodic line with notes marked with flats and a fermata. The left hand has a bass line with notes marked with sharps. Dynamics include *pp* and *ff*. A *ritmico* marking is present in the right hand. A *pre* marking with an arrow points to the start of the piece.

Handwritten musical notation for the third system. The right hand has a melodic line with notes marked with flats and a fermata. The left hand has a bass line with notes marked with sharps. Dynamics include *mp* and *ff*. A *ritmico* marking is present in the right hand. A *pre* marking with an arrow points to the start of the piece.

5"

Handwritten musical notation for the fourth system. The right hand has a melodic line with notes marked with flats and a fermata. The left hand has a bass line with notes marked with sharps. Dynamics include *ff* and *fff*. A *ritmico* marking is present in the right hand. A *pre* marking with an arrow points to the start of the piece.

Handwritten musical notation for the fifth system. The right hand has a melodic line with notes marked with flats and a fermata. The left hand has a bass line with notes marked with sharps. Dynamics include *ff* and *fff*. A *ritmico* marking is present in the right hand. A *pre* marking with an arrow points to the start of the piece.

This image shows a page of musical manuscript paper, numbered '-4-' in the top left corner. The page is organized into ten systems, each consisting of two five-line staves. The paper is off-white and shows signs of age. Faint, handwritten markings are visible across the page, including curved lines, vertical strokes, and some illegible characters. The markings appear to be very light pencil or ink, making them difficult to read. There are no clear musical notes, clefs, or other standard notation elements visible.

Handwritten musical notation for the first system. It consists of a treble clef staff and a bass clef staff. The treble staff begins with a melodic line marked *pp sempre*. This is followed by a rest, then a chordal passage with a slur and a fermata. The system concludes with a long, sweeping melodic line in the treble staff, labeled *ritornello*, which spans across the bass staff. The bass staff contains a corresponding line of notes.

Handwritten musical notation for the second system. It features a treble clef staff and a bass clef staff. The treble staff contains several chords, some with a fermata. The bass staff contains a series of chords, including one with a flat sign (*b*).

Handwritten musical notation for the third system. It consists of a treble clef staff and a bass clef staff. The treble staff has a melodic line with a slur and a fermata, marked *ppp sempre*. The bass staff contains a series of chords.

Handwritten musical notation for the fourth system. It features a treble clef staff and a bass clef staff. The treble staff contains a melodic line with a slur and a fermata. The bass staff contains a series of chords.

Handwritten musical notation for the fifth system. It consists of a treble clef staff and a bass clef staff. The treble staff has a melodic line with a slur and a fermata, marked *ff*. The bass staff contains a series of chords.

This image shows a page of handwritten musical notation on ten systems of staves. Each system consists of two five-line staves. The notation is written in pencil and includes various musical symbols such as notes, rests, and beams. The first system has a treble clef and a key signature of one flat. The second system has a bass clef and a key signature of one flat. The third system has a treble clef and a key signature of one flat. The fourth system has a bass clef and a key signature of one flat. The fifth system has a treble clef and a key signature of one flat. The sixth system has a bass clef and a key signature of one flat. The seventh system has a treble clef and a key signature of one flat. The eighth system has a bass clef and a key signature of one flat. The ninth system has a treble clef and a key signature of one flat. The tenth system has a bass clef and a key signature of one flat. The notation is somewhat faint and appears to be a draft or a study score.

5" 4"

Handwritten musical notation for the first system. It consists of two staves. The first staff has a box containing a piano (p) dynamic and a right-pointing arrow. The second staff has a box containing a piano (p) dynamic, a right-pointing arrow, and a sharp sign (#). Above the first staff, there is a "5" with a double quote and an arrow pointing to the first staff. Above the second staff, there is a "4" with a double quote and an arrow pointing to the second staff. Between the staves, there are several notes with dynamic markings: "7 ff", "7", "7", and "7".

6" 3"

Handwritten musical notation for the second system. It consists of two staves. The first staff has a box containing a piano (p) dynamic, a right-pointing arrow, and a sharp sign (#). The second staff has a box containing a piano (p) dynamic, a right-pointing arrow, and a sharp sign (#). Above the first staff, there is a "6" with a double quote and an arrow pointing to the first staff. Above the second staff, there is a "3" with a double quote and an arrow pointing to the second staff. Between the staves, there are several notes with dynamic markings: "p", "p", "p", and "p".

ca 10" ca 6" ca 5"

Handwritten musical notation for the third system. It consists of two staves. The first staff has a box containing a piano (pp) dynamic and the word "armonico". The second staff has a box containing a piano (p) dynamic and the word "armonico". Above the first staff, there is "ca 10" with a double quote and an arrow pointing to the first staff. Above the second staff, there is "ca 6" with a double quote and an arrow pointing to the second staff. Above the third staff, there is "ca 5" with a double quote and an arrow pointing to the third staff.

4" 3"

Handwritten musical notation for the fourth system. It consists of two staves. The first staff has a box containing a piano (p) dynamic and the word "armonico". The second staff has a box containing a piano (p) dynamic and the word "armonico". Above the first staff, there is "4" with a double quote and an arrow pointing to the first staff. Above the second staff, there is "3" with a double quote and an arrow pointing to the second staff.

3" 5" 6"

Handwritten musical notation for the fifth system. It consists of two staves. The first staff has a box containing a piano (p) dynamic and the word "risc.". The second staff has a box containing a piano (p) dynamic and the word "risc.". Above the first staff, there is "3" with a double quote and an arrow pointing to the first staff. Above the second staff, there is "5" with a double quote and an arrow pointing to the second staff. Above the third staff, there is "6" with a double quote and an arrow pointing to the third staff.

Handwritten musical notation on a five-line staff. It features a treble clef, a key signature of one sharp (F#), and a common time signature (C). The notation includes several notes, some with stems, and a few rectangular boxes drawn around specific measures or groups of notes.

Handwritten musical notation on a five-line staff. It features a treble clef, a key signature of one sharp (F#), and a common time signature (C). The notation includes several notes, some with stems, and a few rectangular boxes drawn around specific measures or groups of notes.

Handwritten musical notation on a five-line staff. It features a treble clef, a key signature of one sharp (F#), and a common time signature (C). The notation includes several notes, some with stems, and a few rectangular boxes drawn around specific measures or groups of notes.

Handwritten musical notation on a five-line staff. It features a treble clef, a key signature of one sharp (F#), and a common time signature (C). The notation includes several notes, some with stems, and a few rectangular boxes drawn around specific measures or groups of notes.

Handwritten musical notation on a five-line staff. It features a treble clef, a key signature of one sharp (F#), and a common time signature (C). The notation includes several notes, some with stems, and a few rectangular boxes drawn around specific measures or groups of notes.

Handwritten musical notation on a five-line staff. It features a treble clef, a key signature of one sharp (F#), and a common time signature (C). The notation includes several notes, some with stems, and a few rectangular boxes drawn around specific measures or groups of notes.

Handwritten musical notation for the first system. It consists of two staves. The upper staff begins with a treble clef, a key signature of one sharp (F#), and a dynamic marking of *ff*. It contains a series of notes with accents (>) and slurs. The lower staff begins with a bass clef, a key signature of one sharp (F#), and contains notes with accents (>) and slurs. The system concludes with four diagonal lines connecting the two staves, indicating a transition or continuation.

Handwritten musical notation for the second system. It features two staves with piano (*p*) and forte (*f*) dynamics. The notation includes notes with accents and slurs. Numerical annotations "7''" and "5''" are placed above the staves. The system ends with notes marked with *p* and *f* dynamics.

Handwritten musical notation for the third system. It consists of two staves with piano (*p*) and forte (*f*) dynamics. The notation features rhythmic patterns of notes with accents (>) and slurs. Numerical annotations "5''", "3''", and "2''" are placed above the staves. The system concludes with notes marked with *p* and *f* dynamics.

Handwritten musical notation for the fourth system. It features two staves with piano (*p*) and forte (*f*) dynamics. The notation includes notes with accents and slurs. Numerical annotations "3''" are placed above the staves. The system concludes with notes marked with *p* and *f* dynamics.

Handwritten musical notation for the fifth system. It consists of two staves with piano (*p*) and forte (*f*) dynamics. The notation includes notes with accents and slurs. Numerical annotations "4''", "2''", and "3''" are placed above the staves. The system concludes with notes marked with *p* and *f* dynamics.

Handwritten musical notation on a grand staff. The notation includes several notes with stems, some of which are slanted. There are also some vertical lines and faint markings that could be clefs or bar lines.

Handwritten musical notation on a grand staff. It features several rectangular boxes drawn around the staves, possibly indicating specific measures or sections. There are some notes and stems visible within and around these boxes.

Handwritten musical notation on a grand staff. The notation consists of several notes with stems, some of which are slanted. There are also some vertical lines and faint markings that could be clefs or bar lines.

Handwritten musical notation on a grand staff. It features several rectangular boxes drawn around the staves, possibly indicating specific measures or sections. There are some notes and stems visible within and around these boxes.

Handwritten musical notation on a grand staff. It features several rectangular boxes drawn around the staves, possibly indicating specific measures or sections. There are some notes and stems visible within and around these boxes.

Empty musical staves at the bottom of the page, consisting of two grand staves.

Handwritten musical notation on a grand staff. The notation consists of five measures. Above the first measure, there is a handwritten note: *for*. Above the second measure, there is a handwritten note: *ca 7"*. The notation includes various notes with accidentals (flats) and dynamic markings (accents). The notes are arranged in a sequence that suggests a specific harmonic or melodic progression. The grand staff includes both treble and bass clefs.

Handwritten musical notation on a grand staff, continuing from the previous section. It features a double bar line and a blue circular stamp. The stamp contains the text: "NEGOBNA UNIVERZITETA LJUBLJANA". The notation includes notes with accidentals and dynamic markings, similar to the first section. The grand staff includes both treble and bass clefs.

A series of ten empty grand staves, each consisting of a treble clef staff and a bass clef staff, arranged vertically. These staves are currently blank, providing space for further musical notation.