

Ricercare

per pianoforte



Allegro

Pianoforte

$\frac{2}{4}$ *f*

cresc. poco a poco

f



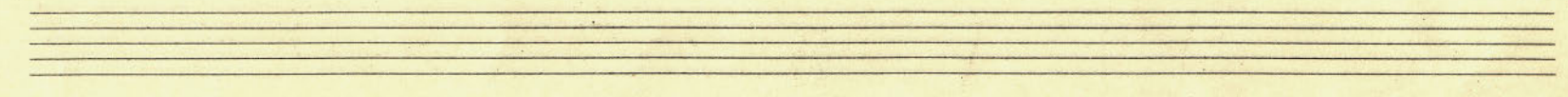
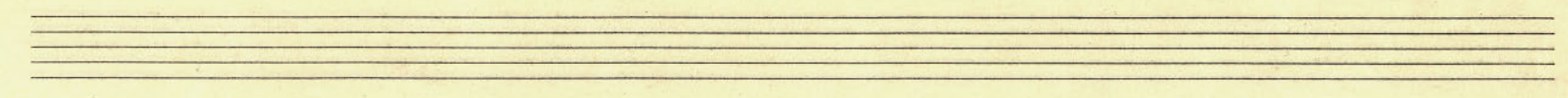
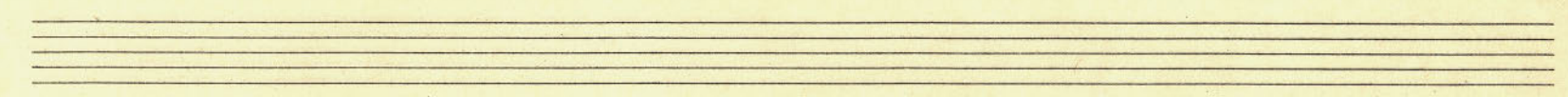
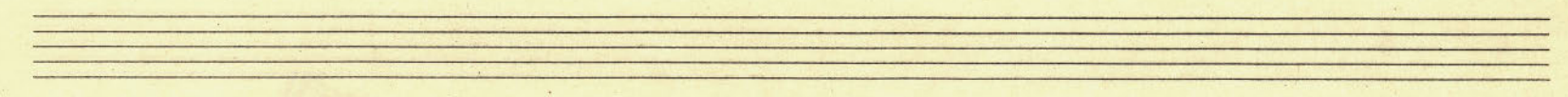
MD 1672/1999

Handwritten musical notation for the first system. The system consists of two staves: a treble staff and a bass staff. The treble staff contains a series of notes, some beamed together, with a fermata over the first note. The bass staff contains a rhythmic accompaniment with notes and rests. Dynamic markings include *p* (piano) and *cres.* (crescendo). There are also some accidentals like flats and sharps.

Handwritten musical notation for the second system. The system consists of two staves: a treble staff and a bass staff. The treble staff has notes with some accidentals and a fermata. The bass staff has a rhythmic accompaniment with notes and rests. Dynamic markings include *f* (forte) and *mf* (mezzo-forte). There are also some accidentals like sharps.

Handwritten musical notation for the third system. The system consists of two staves: a treble staff and a bass staff. The treble staff has notes with some accidentals and a fermata. The bass staff has a rhythmic accompaniment with notes and rests. Dynamic markings include *cres.* (crescendo), *f* (forte), and *decresc.* (decrescendo). There are also some accidentals like sharps.

Handwritten musical notation for the fourth system. The system consists of two staves: a treble staff and a bass staff. The treble staff has notes with some accidentals and a fermata. The bass staff has a rhythmic accompaniment with notes and rests. Dynamic markings include *cres.* (crescendo) and *f* (forte). There are also some accidentals like sharps.



Handwritten musical notation for the first system. It consists of two staves: a treble clef staff and a bass clef staff. The treble staff contains a melodic line with several slurs and accents. The bass staff contains a more rhythmic accompaniment with slurs. The key signature has one sharp (F#). The dynamics include *crce.* (crescendo) in the middle of the system.

Handwritten musical notation for the second system. It consists of two staves. The treble staff has a melodic line that ends with a double bar line. The bass staff has a more rhythmic accompaniment. The key signature has one sharp (F#). The dynamics include *rall.* (rallentando) above the treble staff and *ff* (fortissimo) below the bass staff.

Primož Ramovš
Roma, 5. I. 1943.

