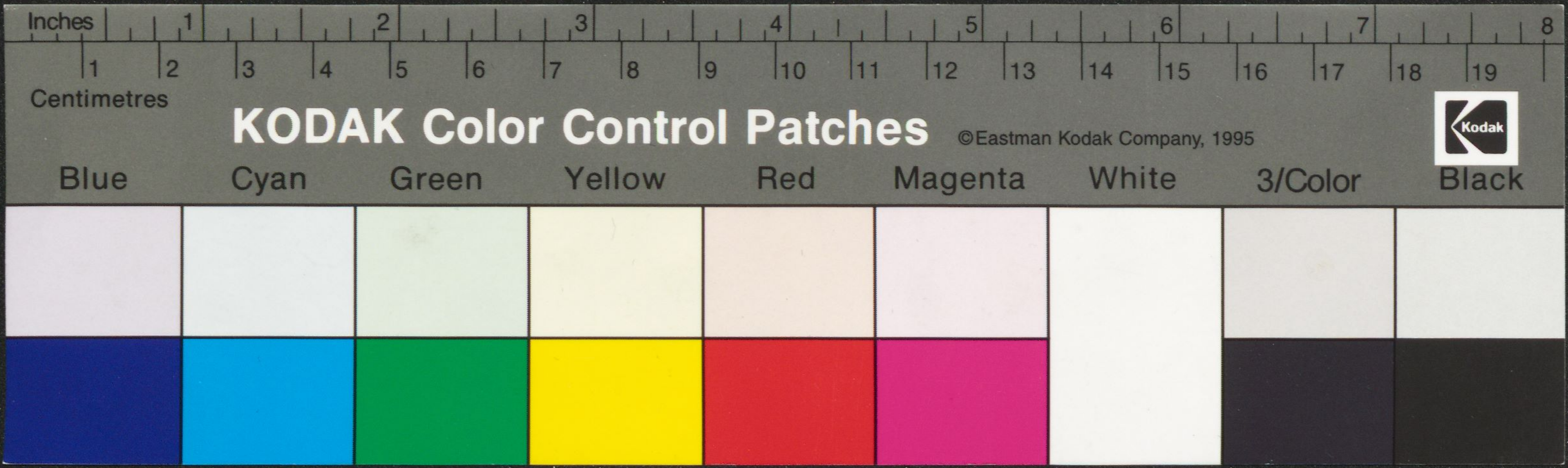


Fragment of a manuscript page with two columns of text in a medieval script. The text is written in black ink with several large initials in red ink. The paper is heavily damaged, with a large irregular hole on the right side and smaller holes and stains throughout. At the bottom center, there is a faint circular stamp. At the bottom right, the number '4' is handwritten in blue ink.





Fragment of a medieval manuscript page with two columns of text in a Gothic script. The text is written in black ink on aged, yellowish parchment. Several large initials are written in red ink, marking the beginning of new sections or paragraphs. The parchment is heavily damaged, with large irregular holes and tears, particularly on the left side and bottom right corner. The text is dense and appears to be a liturgical or scholarly work.

*Fragment of a handwritten note or signature in a cursive script, possibly a later hand or a different dialect. It includes some illegible characters and numbers, such as '4358'.*