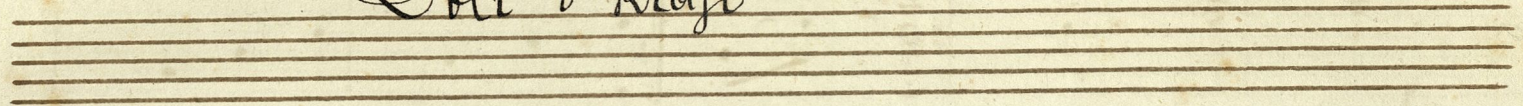
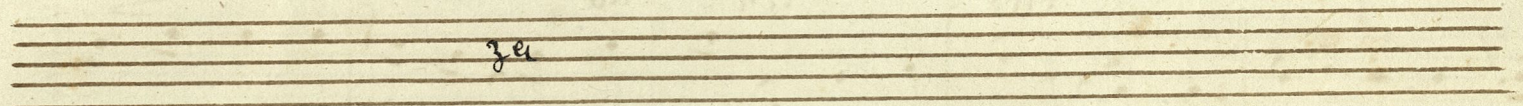


Doli v kraji



berede spisal Baptista



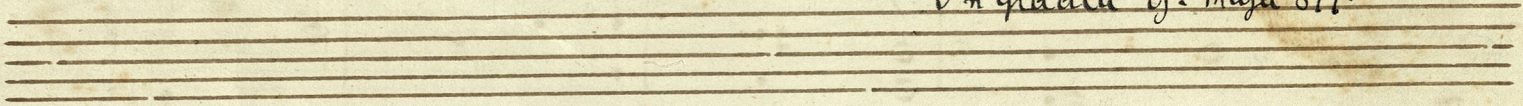
za

tanorico in glasovin

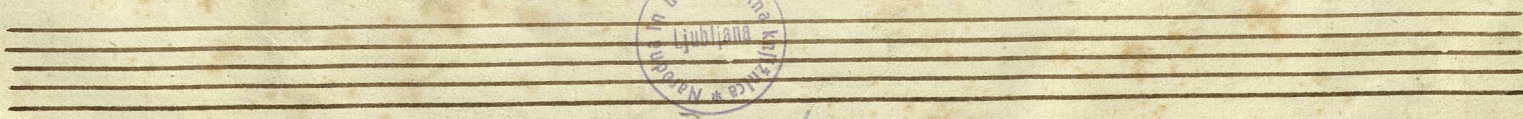
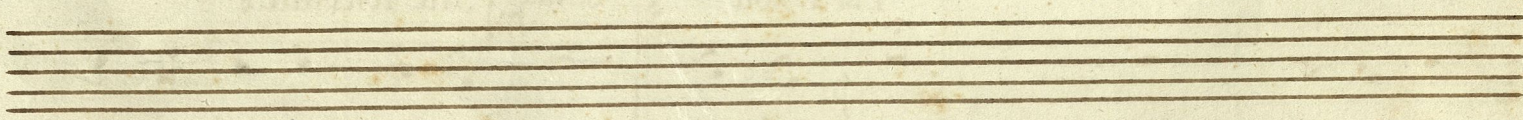
zložil



J. B. Javorec



V Gradcu 9. maja 1877.



M 2481/1954

Doli v kraji.

Moderato.

Glas

1. Doli v kraji sa-ma zai-se nej ver-ro-ta ro-ža mlada na njo

Glasovi.

cres - cen - do

bozjem roža rei-se, naj le rei-se, naj le rei-se, Saj ni mo-ja ro-ža
merzla flana sei-da, naj le sei-da, naj le sei-da Saj ni mo-ja ro-ža

1. in 2. krat

3. krat.

Piu animato

ta!
ta!

2. Oj si-

3. Oh ko bi peic mo-ja

cres - cen - do

bila, slana ne bi je mo- ri-la Oh, za- kaj si me pu- sti-la Ti ne-

cres - cen - do

srećna roži- ca? Ti ne srećna ro- ži- ca?

ppp. ritardando.

