

Fragment of ancient papyrus with handwritten text in a cursive script, likely Demotic or Hieroglyphic. The text is heavily faded and partially obscured by a large tear in the paper. A small circular hole is visible at the bottom right corner of the fragment.

Inches 1 2 3 4 5 6 7 8

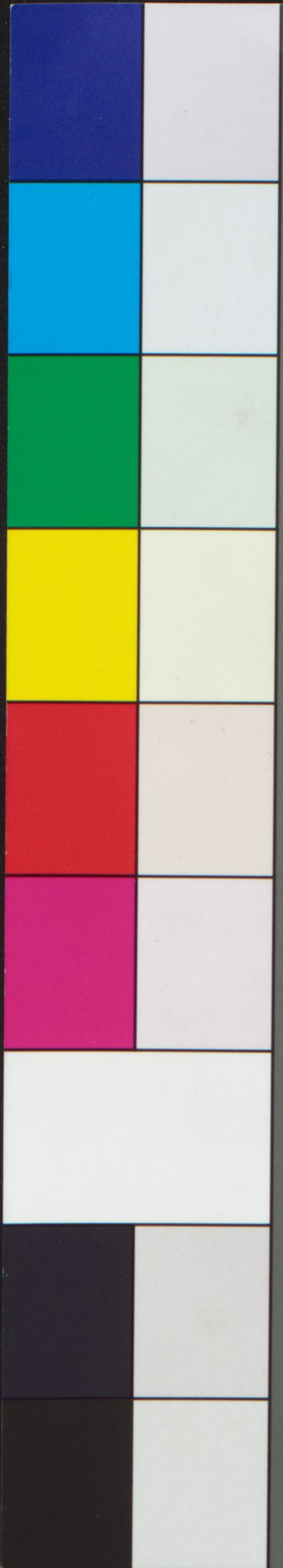
Centimetres 1 2 3 4 5 6 7 8 9 10 11 12 13 14 15 16 17 18 19

KODAK Color Control Patches

©Eastman Kodak Company, 1995



Blue Cyan Green Yellow Red Magenta White 3/Color Black



[Faded handwritten text on aged paper, likely a manuscript or document fragment. The text is mostly illegible due to fading and damage.]

Inches

1 2 3 4 5 6 7 8

Centimetres

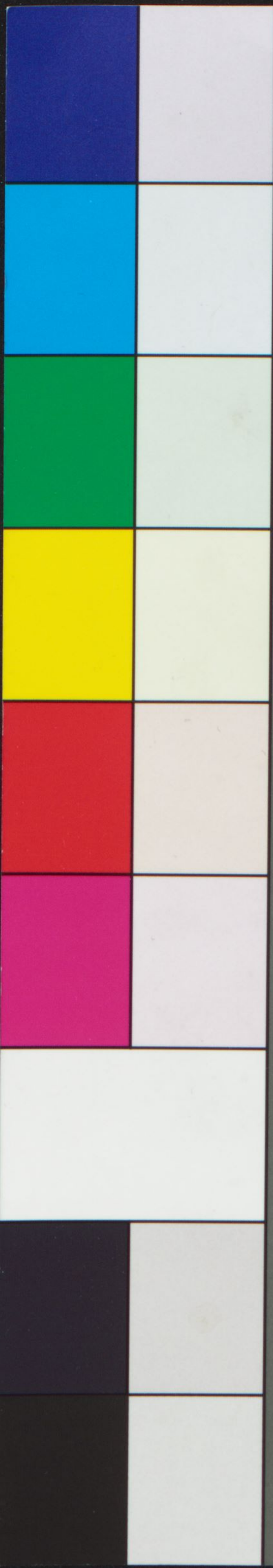
1 2 3 4 5 6 7 8 9 10 11 12 13 14 15 16 17 18 19

KODAK Color Control Patches

©Eastman Kodak Company, 1995

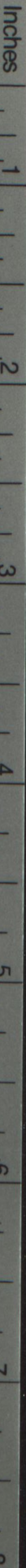


Blue Cyan Green Yellow Red Magenta White 3/Color Black

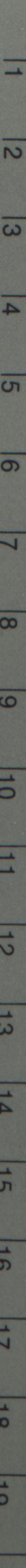


[Handwritten text in a cursive script, likely a historical document or manuscript, written on aged, yellowed paper. The text is dense and fills most of the page.]

Inches

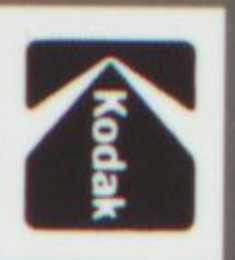


Centimetres



KODAK Color Control Patches

©Eastman Kodak Company, 1995



Blue

Cyan

Green

Yellow

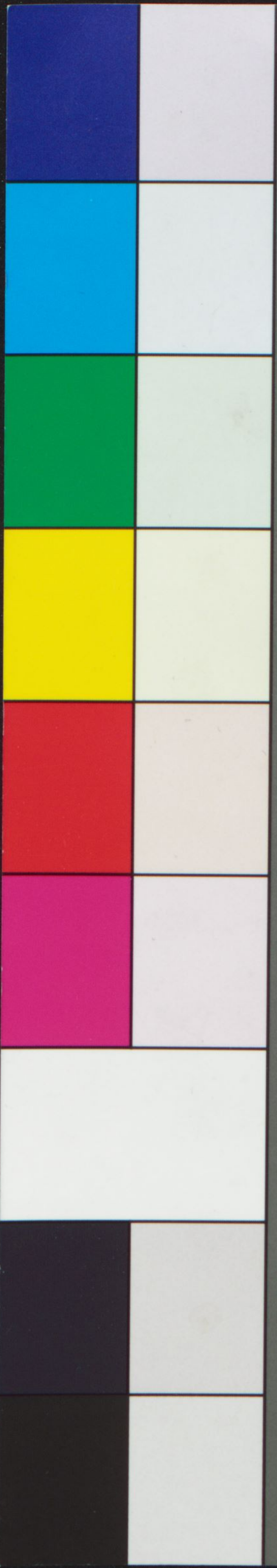
Red

Magenta

White

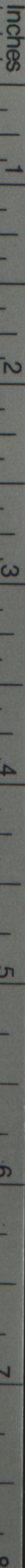
3/Color

Black





Inches



Centimetres



KODAK Color Control Patches

©Eastman Kodak Company, 1995



Blue

Cyan

Green

Yellow

Red

Magenta

White

3/Color

Black

