



1. *Mi se ve ve*  $\underline{\underline{3}}$  *se = can dan maguan se = andan maguan*

*mi so ni car di am tu am.*

2. *Amplius lavame*  $\underline{\underline{3}}$  *et = a pe ca to* ~~pecca~~ *to meo*

*et a pe ca to meo munda me*

3. *Sibi so li pe ca ri*  $\underline{\underline{3}}$  *ut ius ti = ce rij in ser mo nibus tuis*

*et vin cez can ja di ca rij*

4. *Quae enim*  $\underline{\underline{2}}$  *in cer taet oculta sa = pientis tu e*

*ma ni fe sty ra ri mi li.*

5. *Au di Au = meo*  $\underline{\underline{3}}$  *et = ex ul ta bant ex ul ta bant ossa*

*ex ul ta bant ossa lu ni li a ra*



6.

et mundum vea et = = spin' lum ve = = elim' innoa

innoa in vijsten by the ij

7.

redde mihi et spin' tu pin u' jeli con = fir' mame

et spin' tu pin u' jeli con fir' ma me.

8.

Give rame et = ex' ut tu sic lin = = quamea

ij ki ham juy ki ki am ta am.

9.

promian si vola issey ho = = lo auffy non delecta deij

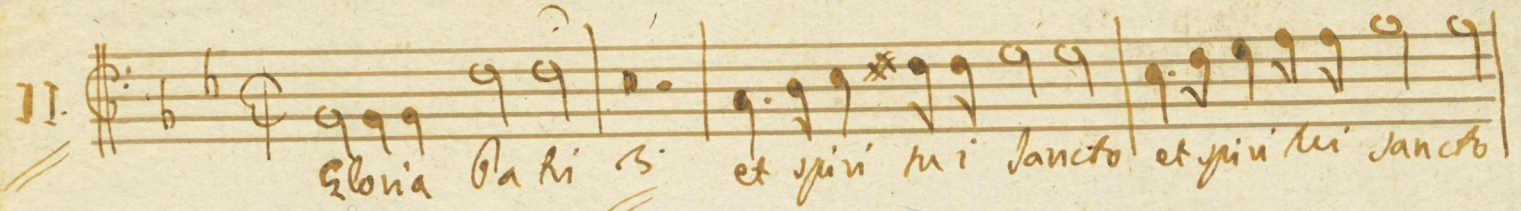
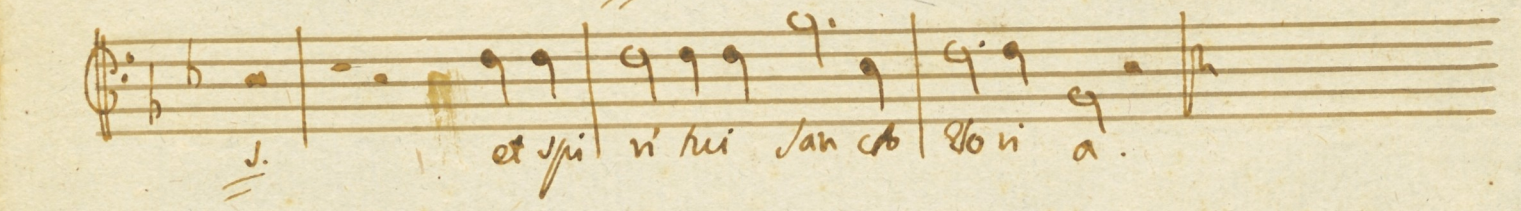
non non non delec ta de ij.

10.

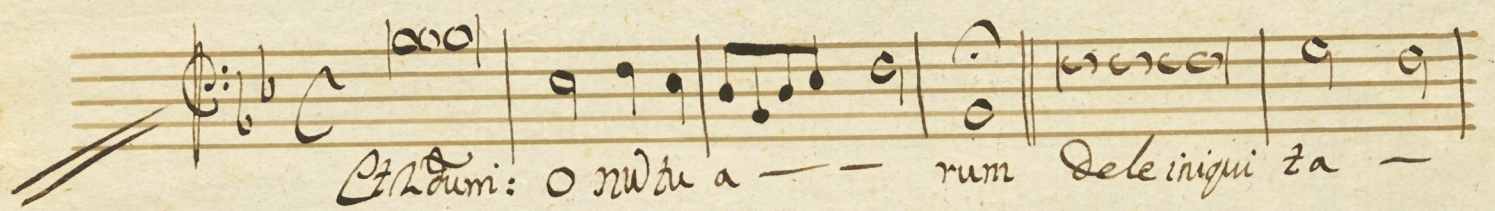
Be' nigne ut q di fi render mu = u' jeusa tem

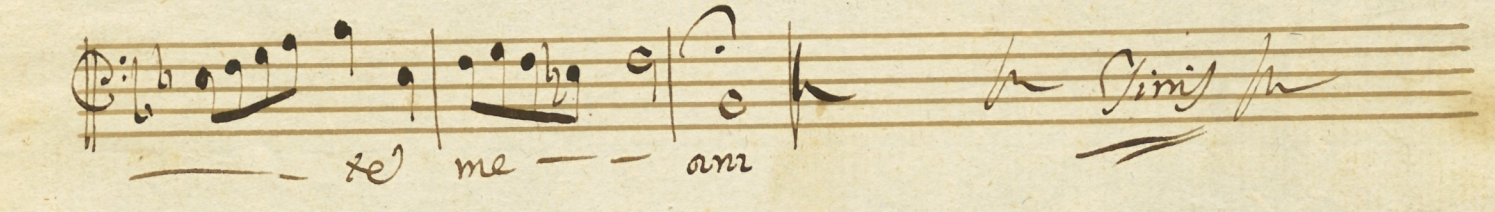
ut q di fi render mu u' je usa tem.



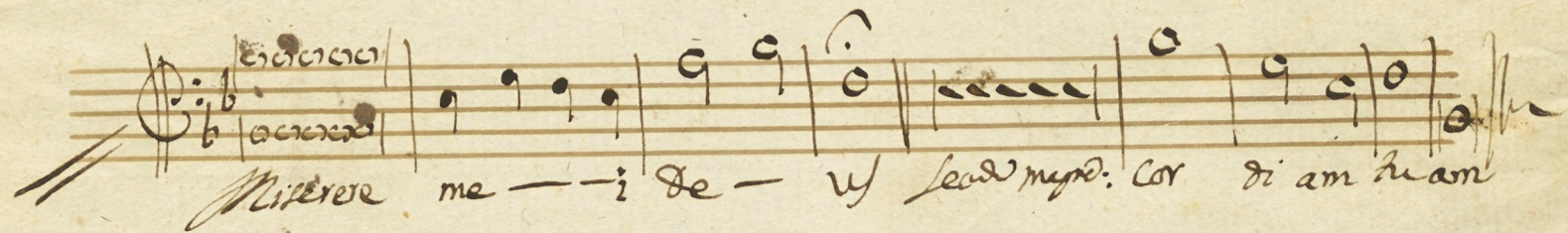
11. 
  
Gloria Pa tri s et spi ri tu san cto et spi ri tu san cto  

  
et spi ri tu san cto Ho ni a.

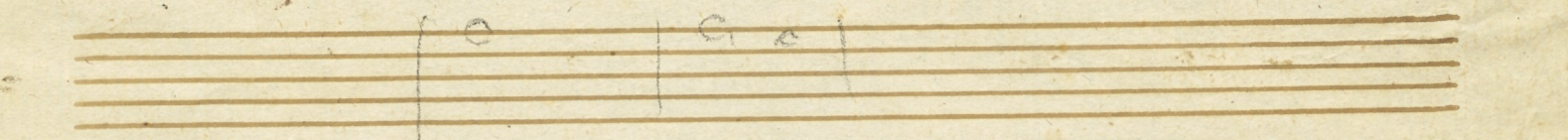
*Risposta del Miserere.*  
A m. Nou.



Et Admi: o ni ta a — — rum de le in qui ta —  

  
te me — — am

*Miserere (Bijp.)*

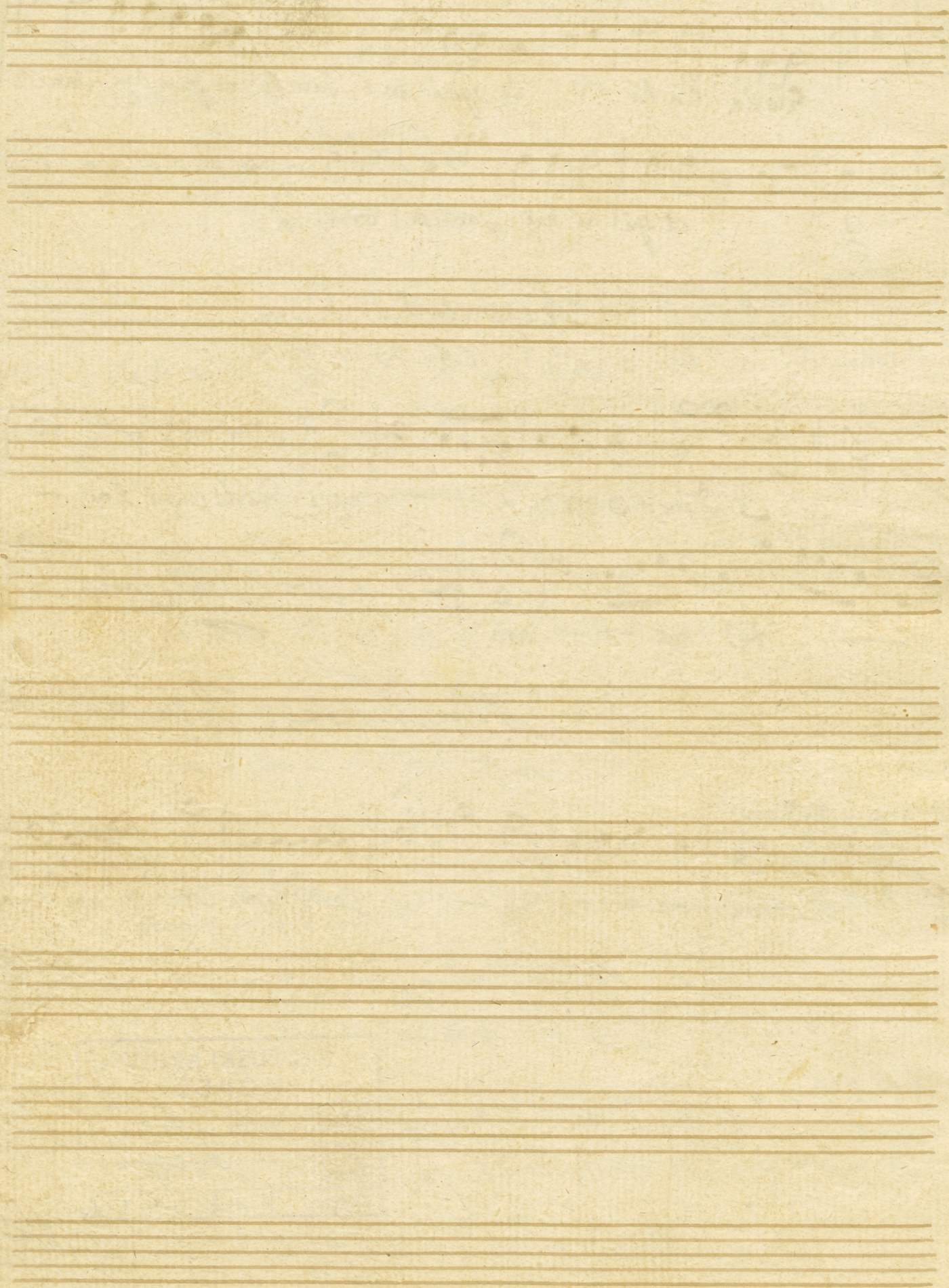


Miserere me — — i de — — u se ad me: Cor di am tu am  


ŠKOFIJSKI ARHIV KOPER	
Ordinariat - kapitelj:	GA
Dopisi:	V/22
Datum:	
Vloženo:	F 1-2; 3-4; 5-6.



112





Tenor primo.

Miserere a. s. Voi.

KAPITELSKI  
ŠAK  
ARHIV 3

1

Mi se re = = = ve

Mi se re ve = Mei De = = = = = us.

secundam magnam secundam magnam mi ser i cor = = = diam tu = am mi = se ri cor = diam tu = am

2

Am plia = = va me ab i ni = = = qui ta = = = se me = = = a,

et a pe ca to pec ca to me o pec ca to me = = = o man da me et

a pe ca to = me o = man da me.

3

Di bi so li pec ca = = = vi et = ma = = = lum co = = = va do te fe

= = = = = ti ut ius ti fi ce ris in ser mo ni bus tuis et vin = ca y cum iud

ca = ri et vin ca y cum iud = ca = ri.



4.

e ce e = = nim ve ni ta tem ve u ta tem d'le sa

= = = = = sti in lecturacoe ca tra sapientie tu e

mani festa = = = sti mi hi ma ni festa = = = sti mi = hi.

5.1

Au di tu i me = = o ba bja = = = dum et = = le ti

= = = = = am et exul ta bant exultabant ossa ossa hani = = = li

a = ta exul ta bant ossa hu mi li = a = ta.

6.

Cor mundum cre = = a cor = mun = = dum vea = in me le = = = u.

et qui u lum redum innova innova in uie = = u ty me = ij innova

in uie = = u ty me = ij

alto  
miserere  
Organo

Miserere mei de - u Leat super: cor dia tu - am.



7.

re = de = mi = = ai re = de = mi = hi = de hi = hi = am = sa = lu = ta = ri =

tu = = = i et spi = ri = tu = prin = ci = pa = li con = fi = ma = me

con = fi = ma = me = = con = fi = ma = me et spi = ri = tu = prin = ci = pa = li con

fi = ma = me.

8.

si = be = ra = = me de san = gu = i = na = bus = de = us = de = us = sa = lu = ti = us = me

= = = = = a et ex = al = ta = bis = lin = gua = me = a et ex = al = ta

bis = lin = gua = me = a in = glo = ri = a = si = mi = li = bus = de = i =

9.

qu = o = ni = am = si = vo = luis = = sep = sa = ci = fi = cum = de = o = di = = se = d = u

= = = = = a que do = lo = cau = sa = ti = us = non = de = le = ta = be = ri = us = non = non = de

= = = = = le = da = be = ri = us = non = non = de = = = = = le = = = = = le = = = = = ita = be = ri = us =



10.

Be = ni = = gne Be ni gne fac to mine in dona volunta te = tua Ji

— — — on at e di ji cen ter mu ni je va sa lem

e di ji cen ter = mu ni je va = sa lem at e di ji cen ter mu ni je

va = sa lem.

11.

Ho ni a Da = = ni Ho ni a Da = = ni Ho = = ni a ni

= = = = li o et spi ri tu i san cto et spi ri tu i san cto

spi ri tu i san = = cto Ho = ni a et spi ri tu i san = = cto

Ho = ni a.

*Oratorio del Miserere*  
2. 15. Vai

Et ad: o - no te a - no de le mi se re -

— te me - am *Finis*



1

Mi se ve = = ve Mi se ve ve me i de = = = =

u = = = = u sicut enim magis adan magis misericor = = = = dia

tu = am mi se ri cor = = = = diam tu = am

2

Amplius laus me ab i ni = = = qui sa = = = te me

= = = = a et a pec cato peccato meo peccato me

= = = = o munda me et a pec cato me o = munda me.

3

Sibi so li pecca = = = ri et = ma = = = lam co = = = am te ge

= = = = di ut ju sti fi ce rij in ser moni bus de rij

et in = ce y cam ju di ca = rij et = in ce y cam ju di ca = rij

alro  
Missa  
Missa

Miserere mei de = u sicut enim magis cor dia tu = am =



4.

ecce e = = nim ve n'ra tem veni ra tem di se saj

si in certa et oc culla sapien ti e ma

manifesta = = si mi = hi ma nifesta = = si = mi = hi.

5.

Pa di lui rex = = o da ty gan = = dum et = = le ti

an et exul tabant exultabunt ossa of sa hani = =

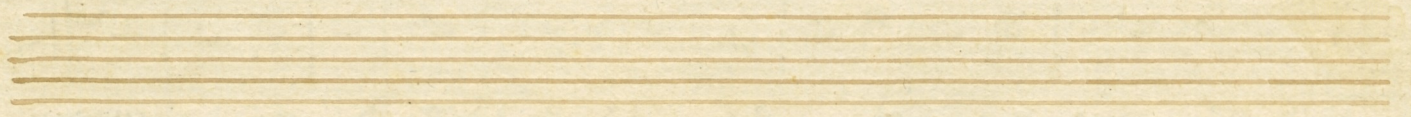
= li a = ra exul tabant ossa hani li a = ra.

6.

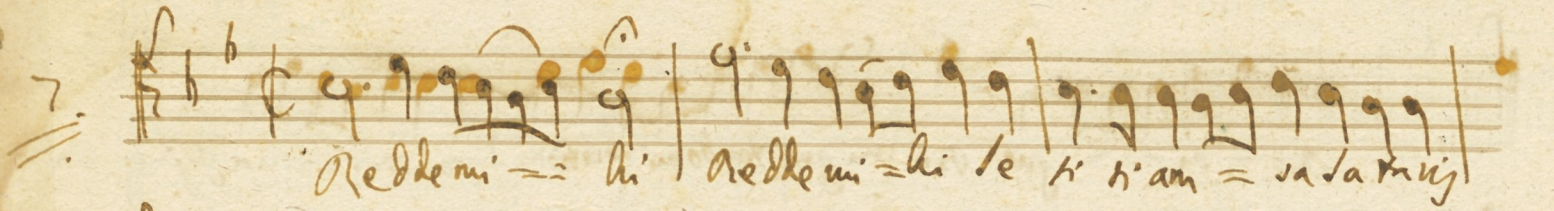
Comman:ve = = a Com man = = dum ve a = in me de

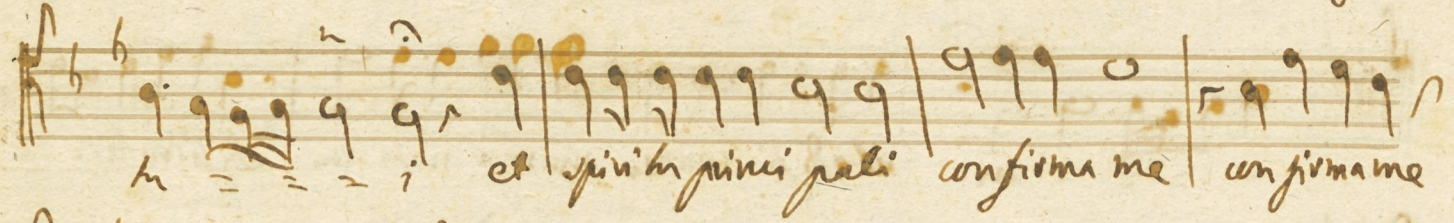
us et spi ri tum vec ho in nova in nova in visce = ri bay

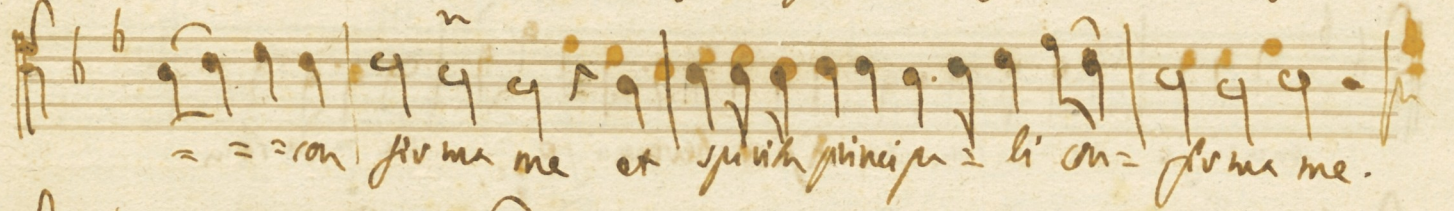
me = ij in nova in visce = ri bay me = ij.

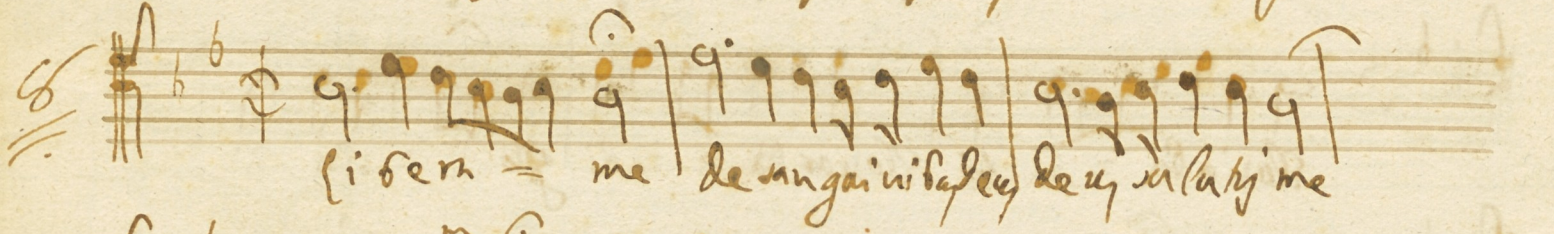


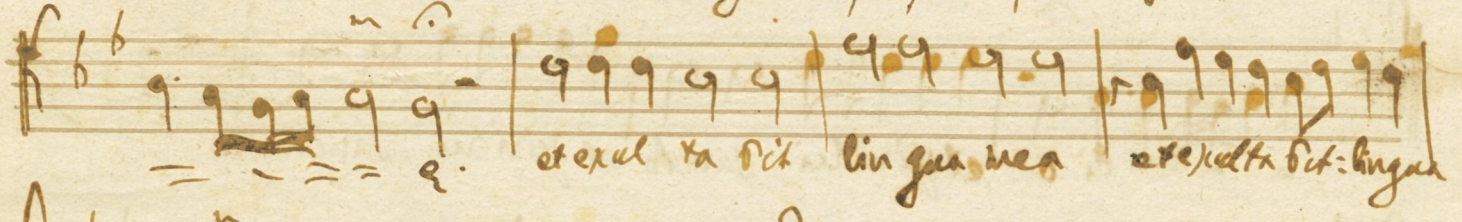


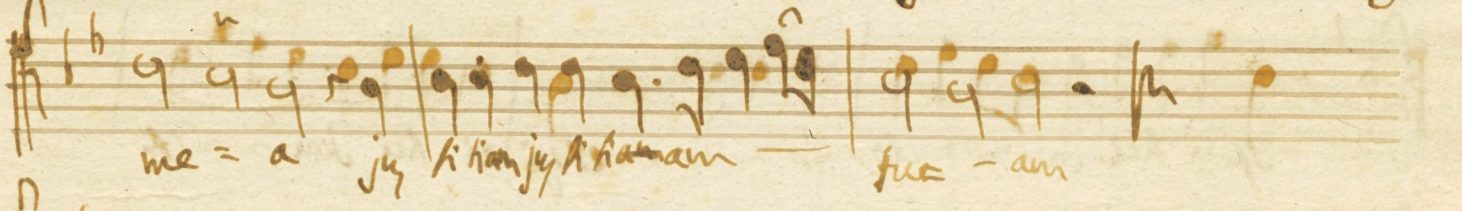
7.   
 Redde mi = hi Redde mi = hi se ti h'am = sa sa tu ij

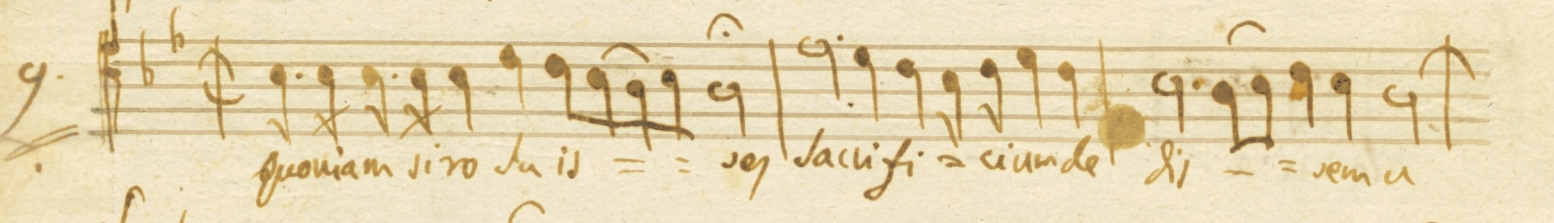
  
 h = = = i et spiri tu pini pali confirma me confirma me

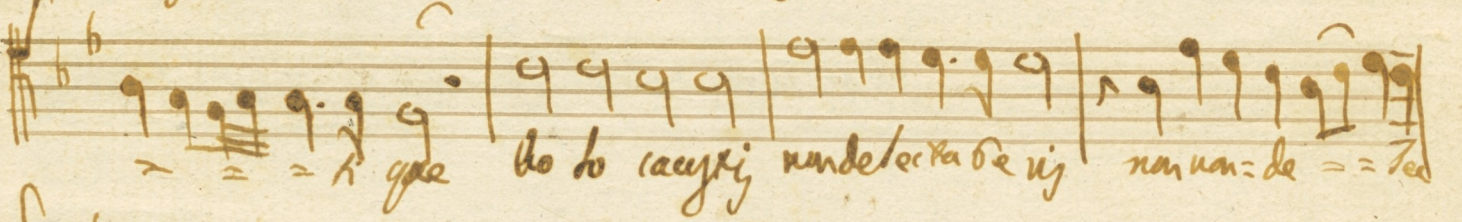
  
 = = = con firma me et spiri tu pini = li con = firma me.

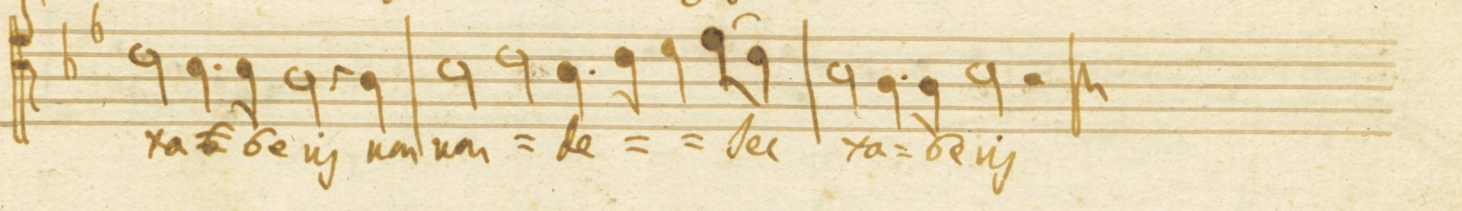
8.   
 si serm = me de un gui ni ba le u de u sa la tu ij me

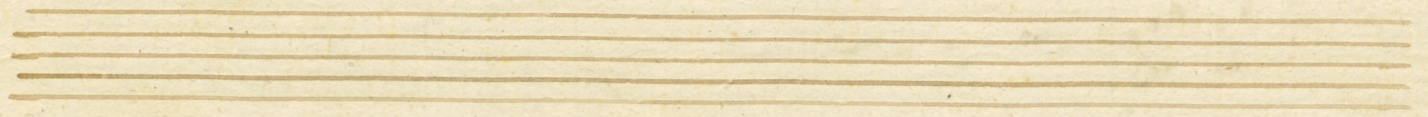
  
 = = = e. et ex al ta dit lin gua mea et ex al ta dit: lin gua

  
 me = a ju A hian ju A hian am — su a — am

9.   
 quoniam si ro lu id = = se y lacu fi = ci unde li = = rem u

  
 = = = h gae do lo cae y ij unde lecta de u ij nam un = de = = tea

  
 xa = de u ij nam un = de = = tea xa = de u ij





10.

Be = ai = = que Be ni que fa domi ne in bone volunta te = ma sij

= = = an et edi ji con tes mu ni je ni sa lem edi fi ca tus =

mu ni je ni sa lem ure di fi ca tus mu ni je ni sa lem.

11.

glo ri a ba = = ti glo ri a ba = = ti glo = = ri a ti

= = = ti o et spi ri tui san cto et spi ri tui san cto

spi ri tui san = = cto glo = ri a et spi ri tui san = = cto

glo = ri a.

Requies del Miserere: *ff* *Ad. Voc.*

et con: o = no tu a = no de le in gi ta

me = an *ff* *Fine*