

Offertorium in C
Domine Dominus noster

a

Tenore Solo
con Organo oblig.

comp.

dal

P. Raphaelle Ilowsky.

Offertorium in E
Domine Dominus noster

a

Tenore Solo
con Organo oblig.

comp.

dal

P. Raphael Ilowsky

Organo

Maestoso

The first system consists of two staves. The upper staff is in treble clef and the lower in bass clef. Both are in common time (C) and the key signature has three sharps (F#, C#, G#). The music begins with a series of quarter and eighth notes in the right hand, followed by a sixteenth-note flourish. The left hand plays a steady eighth-note accompaniment.

The second system continues the piece. The right hand features a sixteenth-note flourish and a series of eighth-note patterns. The left hand maintains a consistent eighth-note accompaniment.

The third system shows a change in the right hand's texture, with chords and sixteenth-note patterns. The left hand continues with its eighth-note accompaniment.

The fourth system features a sixteenth-note flourish in the right hand, followed by a series of sixteenth-note patterns. The left hand continues with its eighth-note accompaniment.

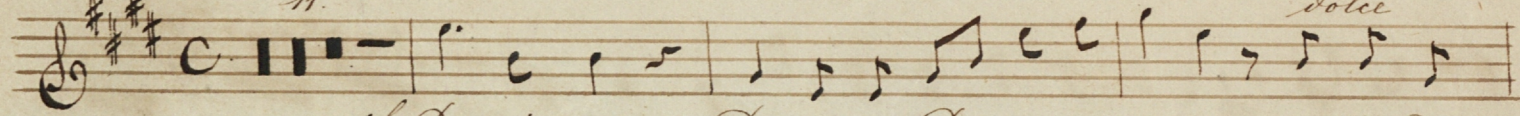
The fifth system concludes the piece. The right hand features a series of sixteenth-note patterns, and the left hand ends with a final chord.

Offertorium.

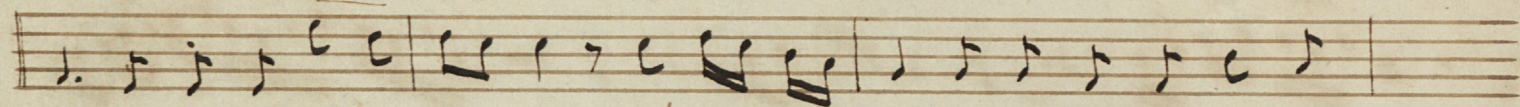
Tenore Solo.

Maestoso.
11.

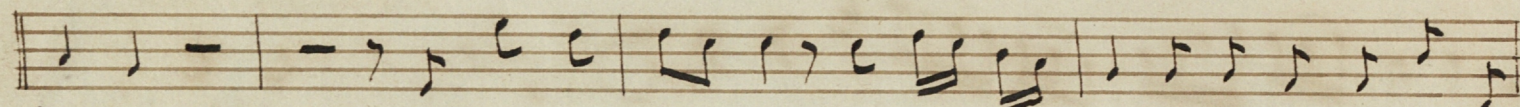
dolce



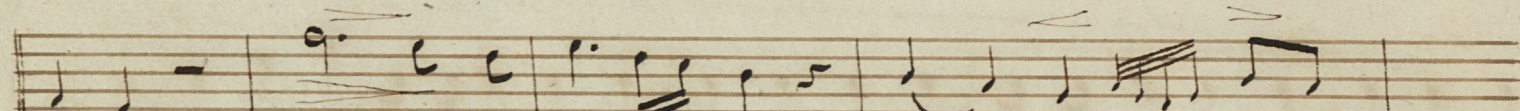
f Domine Domine Dominus noster quam admi-



ra-bi-le est nomen suum in u-ni-versa in uni-versa



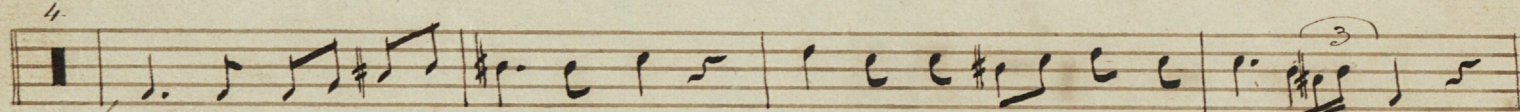
terra est nomen suum in u-ni-versa in uni-versa



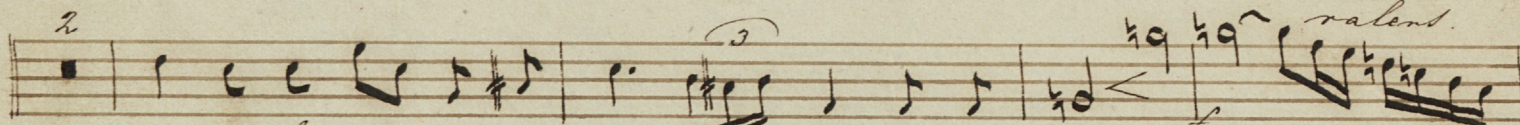
terra Quam admi-ra-bi-le est no-men



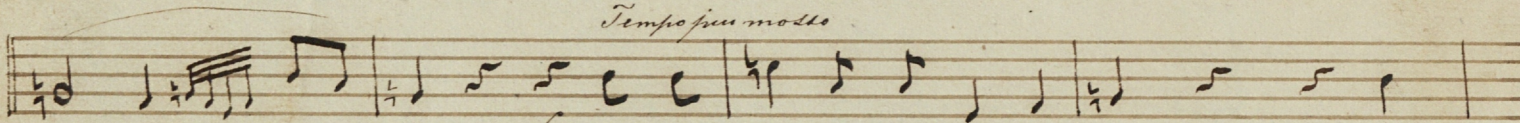
suum in u-ni-ver-sa ter-ra



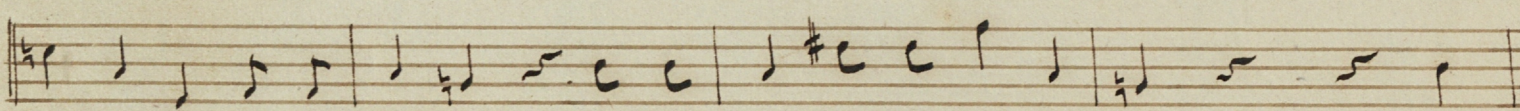
mf Quo-ni-am ele-vata est magnifi-centia su-a



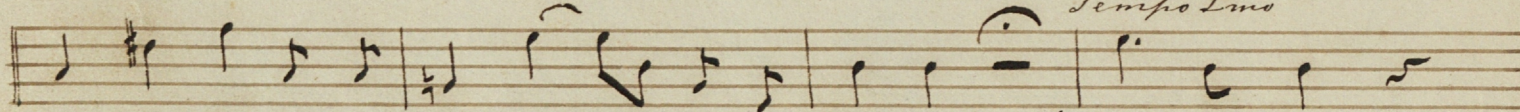
magnifi-centia su-a Super coelos su-per



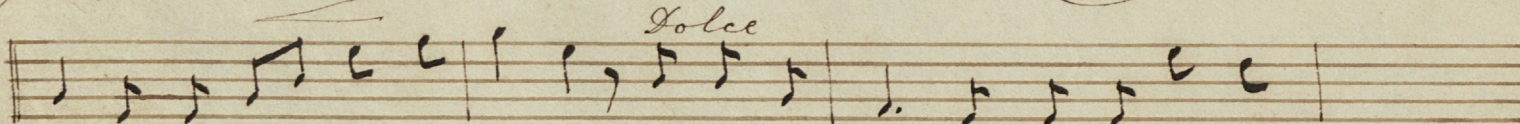
coe-los *f* Quo-ni-am ele-vata est ma-



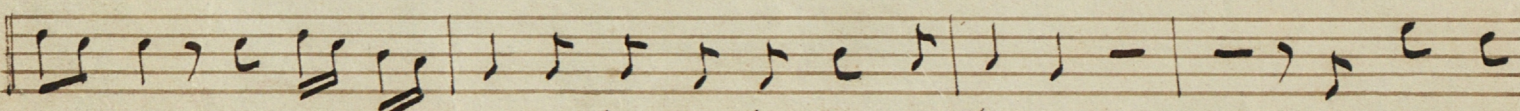
gnificentia tua Quo-ni-am ele-vata est ma-



gnificentia su-a super coelos *f* Domine



Domine Dominus noster quam admi-ra-bi-le est nomen



suum in u-ni-versa in uni-versa terra est nomen

Summ in uni-versa in uni-versa terra *mf.* Quo-ni-am e-le-

vasa est magnifi-cen-ti-a sua Quo-ni-am e-le-

vasa est e-le-va-ta est super coe-los Alle-

luja alle-luja Alle-luja alle-luja. Alle-luja Alle-

luja Alle-luja alle-luja. Al-le-luja Al-le-

lu-ja.

Handwritten musical notation, first system. The system consists of two staves. The upper staff contains a series of chords, many of which are beamed together in groups of four or five. The lower staff contains a melodic line with eighth and sixteenth notes, some with slurs.

Handwritten musical notation, second system. The system consists of two staves. The upper staff continues the melodic line from the first system. The lower staff contains chords, some of which are beamed together.

Handwritten musical notation, third system. The system consists of two staves. The upper staff contains a melodic line with some notes marked with a 'p' (piano). The lower staff contains chords, some of which are beamed together.

Handwritten musical notation, fourth system. The system consists of two staves. The upper staff contains a melodic line with many beamed notes. The lower staff contains chords, some of which are beamed together.

Handwritten musical notation, fifth system. The system consists of two staves. The upper staff contains a melodic line with many beamed notes. The lower staff contains chords, some of which are beamed together.

Handwritten musical notation, first system. The upper staff features a complex melodic line with many sixteenth notes and a trill-like passage. The lower staff contains a simpler accompaniment with quarter and eighth notes.

Handwritten musical notation, second system. The upper staff continues the melodic line with a trill. The lower staff has a steady accompaniment of quarter notes.

Handwritten musical notation, third system. The upper staff shows a more active melodic line with sixteenth notes. The lower staff continues with a consistent accompaniment of quarter notes.

Handwritten musical notation, fourth system. The upper staff includes a section with repeated rhythmic patterns (possibly ornaments or trills) and a melodic phrase. The lower staff has a corresponding accompaniment.

Handwritten musical notation, fifth system. The upper staff concludes with a melodic phrase. The lower staff ends with a final accompaniment. The system concludes with a large, decorative flourish or ornament.