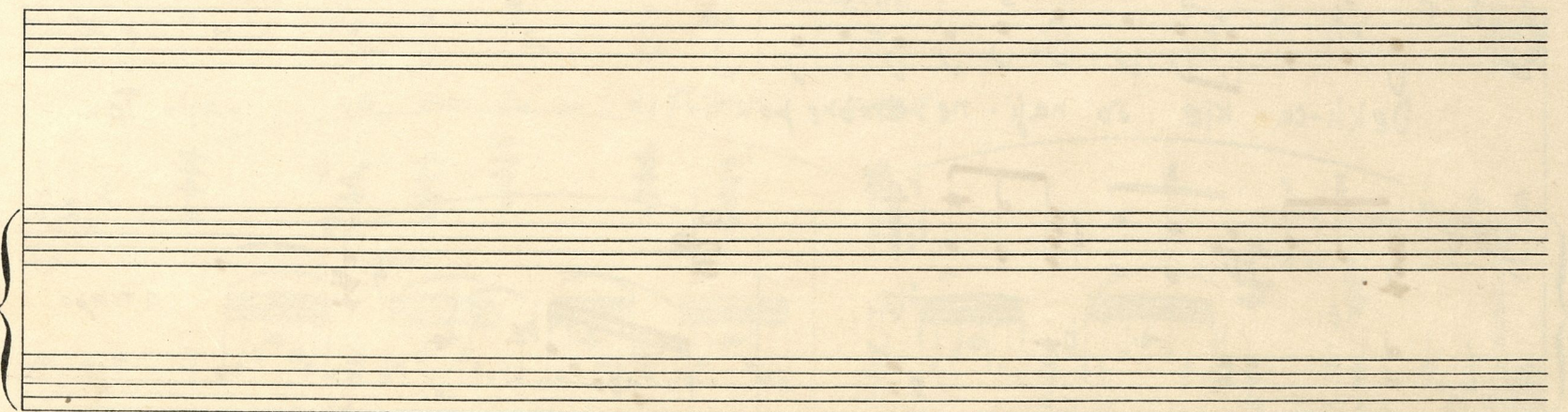
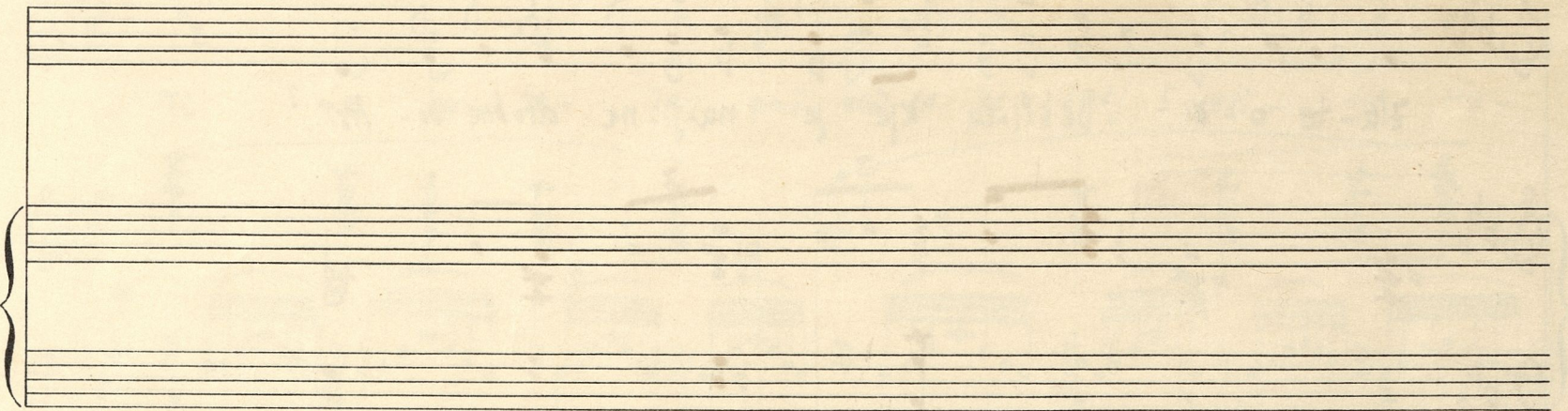


SREČANJE

VIPOTNIK

Two musical staves with the title "SREČANJE" and subtitle "VIPOTNIK" written across them. The title is in a large, stylized font with a small accent over the 'Č'. The subtitle is in a smaller, simpler font. A large curly brace is on the left side.

Tebi, Zdenka!

Largo | ♩ = 60 |

Musical notation for the first system, including piano accompaniment and vocal line. The piano part features chords and a melodic line with a triplet. The vocal line is a whole rest.

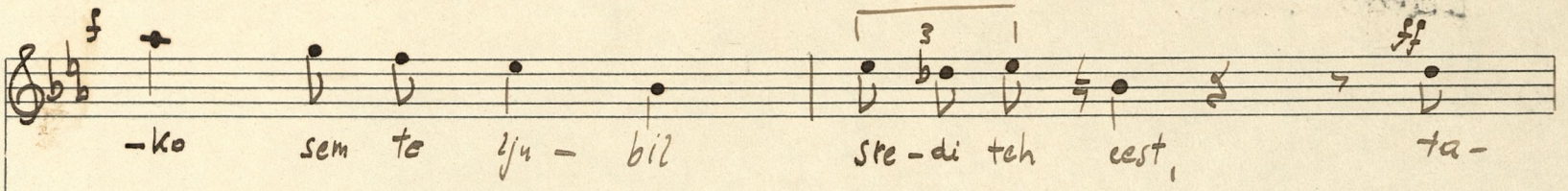
Musical notation for the second system. The vocal line begins with the lyrics "De-kli-ca, kje so tro-je". The piano accompaniment includes dynamic markings *mf* and *pp*.

Musical notation for the third system. The vocal line continues with the lyrics "Zla-te o-či? Dekli-ca, kje je naji-ne drobna bo-lest?". The piano accompaniment features triplets and dynamic markings *pp* and *ppp*.

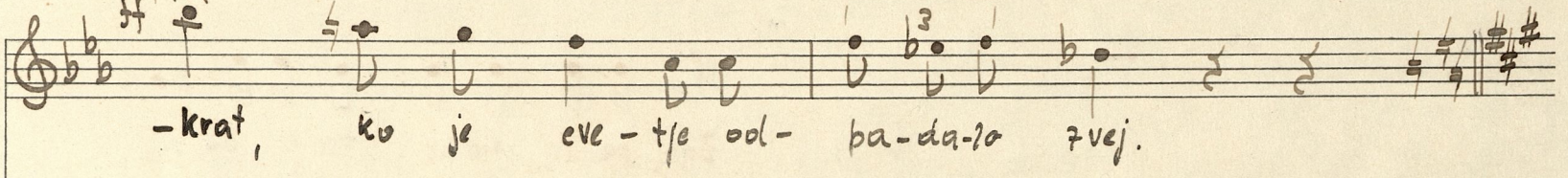
Musical notation for the fourth system. The vocal line concludes with the lyrics "Dekli-ca kje so naji-ne drobne po-ti? Ta-". The piano accompaniment includes dynamic markings *f*, *rit.*, and *a tempo*, along with a sixteenth-note triplet.



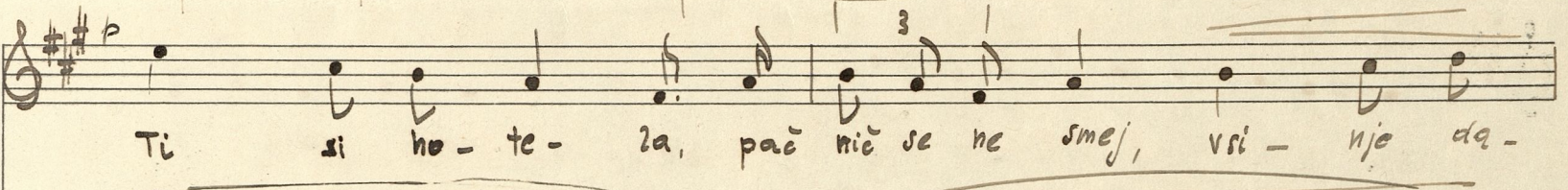
-ko sem te zju - bil ste - di teh cest, ta -



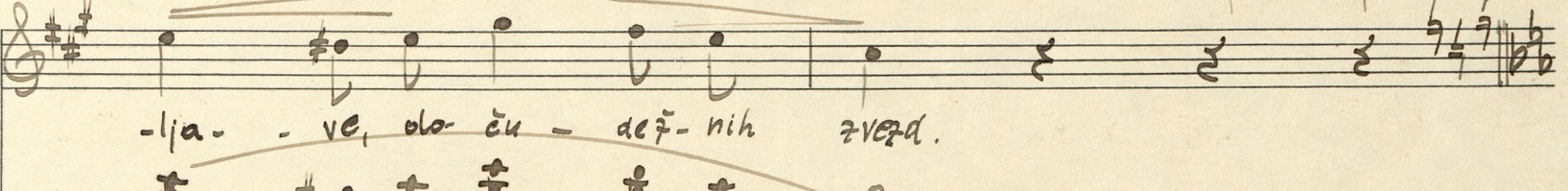
-krat, ko je eve - tje od - ba - da - la zvezj.



Ti si ho - te - la, pač nič se ne smeš, vsi - nje da -



-lja - ve, ob - ču - dež - nih zvezd.



Handwritten musical score for the piano introduction. It consists of two staves: a treble clef staff and a bass clef staff. The key signature is G minor (two flats). The music features a series of chords and melodic fragments, including a triplet of eighth notes in the right hand.

Handwritten musical score for the vocal entry and piano accompaniment. It consists of two staves. The vocal line is in the treble clef, and the piano accompaniment is in the bass clef. The key signature is G minor. The lyrics are: "Zdaj pa so motne tvoje o-či,". The piano part includes dynamic markings *mf* and *pp*, and a triplet of eighth notes.

Handwritten musical score for the vocal line and piano accompaniment. It consists of two staves. The vocal line is in the treble clef, and the piano accompaniment is in the bass clef. The key signature is G minor. The lyrics are: "Zdaj je u- mr-la tvoja bo-lest in blatno so drobne, drage poti...". The piano part includes dynamic markings *pp* and *mf*, and a triplet of eighth notes.

Handwritten musical score for the piano conclusion. It consists of two staves: a treble clef staff and a bass clef staff. The key signature is G minor. The music features a series of chords and melodic fragments, including a triplet of eighth notes in the right hand. The score ends with a double bar line and the number "3 X 44".