



Suae carae uxoris sorori  
Balbinae Smole  
dedicatum.



# AVE MARIA

pro una voce

cum organo aut harmonium

— composuit —

## ANTONIUS NEDVĚD

N<sup>o</sup> 1. F dur (Sopran vel Tenor)

N<sup>o</sup> 2. A dur (Mezzo Sopran vel Tenor) - N<sup>o</sup> 3 B dur (Mezzo Sopran vel Tenor)

Edidit „Glasbena Matica“  
Sabaci 1890.



MD 339/4771

ID=40405760

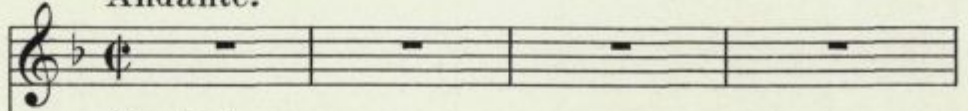
I.  
Ave Maria.



Andante.

A. Nedvèd.

Cantus.



*Cum leni sono.*

Organum  
sive  
Harmonium.



A - - ve A - - ve A - ve Ma -

ri - a gra - ti - a ple - na Do - mi - nus te - cum

Do - mi - nus te - cum Do - mi - nus Do - mi - nus te -

cum be - ne - di - cta tu in mu - li - e - ri - bus et

be - ne - di - ctus be - ne - di - ctus fructus ven - tris tu - i Je -

sus. San -

- - cta Ma - ri - a Ma - ter De - - i

*mf* o - ra pro no - bis o - ra pro no - bis *f* pec-ca-to - ri-

bus nunc et in ho - ra mor - tis no -

*mf* strae A - - men *f rit.* A - men.

# II. Ave Maria.

Andante.

A. Nedvèd.

Cantus.

Organum  
sive  
Harmonium.

*Cum leni sono.*  
*p sempre legato*

The score begins with a Cantus staff (treble clef, key signature of two sharps, common time) containing four whole rests. Below it, the Organum/Harmonium is written in grand staff (treble and bass clefs, key signature of two sharps, common time). The organ part starts with a piano (*p*) dynamic and is marked *sempre legato*. It features a melodic line in the right hand and a supporting bass line in the left hand, with various phrasing slurs and ties.

*p*

A - ve Ma - ri - a gra - ti - a gra - ti - a

This system contains the first vocal phrase. The Cantus staff begins with a piano (*p*) dynamic and contains the melody for the words "A - ve Ma - ri - a gra - ti - a gra - ti - a". The Organum/Harmonium continues with accompaniment, including chords and moving lines in both hands.

*mf*

ple - na Do - mi - nus Do - mi - nus te - cum

This system contains the second vocal phrase. The Cantus staff begins with a mezzo-forte (*mf*) dynamic and contains the melody for the words "ple - na Do - mi - nus Do - mi - nus te - cum". The Organum/Harmonium provides accompaniment, with a prominent melodic line in the right hand.

*f* be - - ne - di - cta tu in mu - li - e - ri - bus *p* et

be-ne-di-ctus fru - ctus ventris tu - i Je - sus Je - -

*f* sus Je - - - sus.

*p* San - - cta Ma - ri - - a *mf* ma - ter

De - i o - ra pro no - bis pec-ca - to - ri - bus

nunc et in ho - ra mor - tis nos - trae nunc et in

ho - ra mor - tis nos - - - trae A - -

men A - - - - men.



# III. Ave Maria.

A. Nedvěd.

**Cantus.** *Adagio.* *mf*  
A - ve Ma - ri - a

*Cum leni sono.*

**Organum  
sive  
Harmonium.** *p sempre legato*

gra - ti - a ple - na Do - mi - nus Do - mi -  
nus Do - - mi - nus te - - cum be - ne -

di - cta tu in mu - li - e - ri - bus et be - ne - di - ctus

fru - ctus be - ne - di - ctus fru - ctus ven - tris tu - i Je -

- - - sus. San - cta Ma -

ri - a ma - ter De - i o - ra pro

no - bis pec-ca-to - ri - bus nunc et in ho - ra

mor - tis no - - strae nunc et in ho - ra

mor - tis no - - - - strae A - -

men A - - - - men.



C00155 1042000

NARODNA IN UNIVERZITETNA  
KNJIŽNICA



00000433957

NARODNA IN UNIVERZITETNA KNJIŽNICA

M

Nedvěd, A.

Tres GM 21

C00155 ▢