

## Keltski bojevniški grob iz Slatine v Rožni dolini pri Celju?

Andrej GASPARI, Robert KREMPUŠ in Danijela BRIŠNIK

### Izvleček

Članek obravnava 14 železnih predmetov, ki jih hrani lokalni zbiralec v Velenju in domnevno izvirajo iz doslej neznanega keltskega bojevniškega groba v Slatini v Rožni dolini pri Celju. Meč z nožnico, pasna garnitura, krajša sulična ost, ščitna grba, škarje, britev in fibule tvorijo značilen inventar moškega pokopa mlajše faze srednjelatenskega obdobja (LT C2) ter se dobro ujemajo tako s kronologijo kot z oblikami ostalega gradiva iz Slatine. Med predmeti, ki kažejo enako patiniranost in stopnjo ohranjenosti, izstopajo sekač z zakovico, prva tovrstna najdba na območju mokronoške skupine, okrašen krivi nož in viličasto orodje, ki imata primerjave predvsem v poznolatskih grobovih z območja Skordiskov, pa tudi daljša sulična ost. Ni mogoče izključiti možnosti, da del predmetov izvira ali iz mlajšega pokopa ali iz nezakonitih izkopavanj v Podonavju.

**Ključne besede:** Slovenija, Hrvaška, Srbija, mlajša železna doba, Kelti, bojevniški grob, orožje, orodje, deli nože

### Abstract

The article discusses 14 iron objects, kept by a local collector in Velenje, which are supposed to have come from an as yet unknown Celtic warrior grave at Slatina v Rožni dolini near Celje. A sword with a scabbard, a belt set, a shorter spear head, a shield umbo, scissors, a razor, and fibulae form a characteristic inventory of a male burial from the late phase of the middle La Tène period (LT C2), and corresponds well both with the chronology and the forms of the other material from Slatina. Among the objects, which display a similar degree of patina and preservation, stand out a slashing knife (*Hiebmesser*) with a rivet, the first such find in the territory of the Mokronog Group, a decorated curved knife, and a forked tool, which primarily have analogies in the late La Tène graves from the region of the Scordisci, as well as a longer spear head. The possibility cannot be excluded that some of the objects could have been excavated from later burials, but they could also come from illegal excavations in the Danubian basin.

**Keywords:** Slovenia, Croatia, Serbia, late Iron Age, Celts, warrior grave, weapons, tools, attire elements

### UVOD

Keltsko grobišče v Slatini v Rožni dolini pri Celju je bilo odkrito leta 1972 pri kopanju jame za stopnišče ob vhodu hiše Slatina 4 E. Lastnik Govejšek naj bi takrat v eni sami, 100 x 80 cm veliki grobni jami, polni žganine, izkopal precejšnjo količino kovinskih pridatkov, ki so bili v katalogu razstave Kelti na Celjskem predstavljeni kot vsebina dveh grobov (1 a in 1 b),<sup>1</sup> verjetneje pa je, da gre za pridatke dveh moških in enega ženskega pokopa. Meč iz enega od takrat odkritih grobov je najditeljev sin prodal prijatelju in je šele leta 1983 s posredovanjem prišel v muzej, ostale najdbe, kot

tudi predmete, ki so bili odkriti istega leta pri sajenju sadnega drevja, ter meč v nožnici in obroček pasne garniture, najdena med ravnanjem zemljišča zahodnega soseda Leskovška (Slatina 4D) naslednjega leta, pa je lastnik poklonil muzeju.<sup>2</sup>

Med arheološkimi raziskavami ekipe Pokrajinskega muzeja v Celju pod vodstvom arheologinje Darje Pirkmajer med leti 1985 in 1989 je prišlo na dan nadaljnjih 29 žganih planih grobov. Grobišče leži na zložnem hrbtu okoli 500 m vzhodno od starohalštatskega gradišča Slačjek in še ni v celoti raziskano. Glavnina grobov je bila izkopana na Govejškovi parceli, v manjšem delu pa se je nekropola širila tudi na Leskovškov vrt. Ker tudi

<sup>1</sup> Pirkmajer 1991, 21.

<sup>2</sup> Ead. 1986; 1988.

sondiranja na južnem pobočju ter parceli vzhodnega soseda niso prinesla novih grobov, je Pirkmajerjeva menila, da grobišče sega proti cesti oz. najvišje ležečem delu hrbtna ter na njegovo severno pobočje, kjer v gozdu ležita dve ozki terasi. Pravilnost njene domneve sta dokazala dva grobova, izkopana onkraj ceste, v devetdesetih letih pa je bil na tem območju naključno odkrit železen sekač.<sup>3</sup>

Glede na dokumentirane inventarje se je tukaj pokopavalo skoraj izključno v 2. stoletju pr. n. št. oz. v mlajši fazi srednjelatenskega obdobja (LT C2). Med pridanimi predmeti v moških pokopih, ki v splošnem ne odstopajo od vzhodnokeltske materialne kulture, omenimo meče v nožnicah, okrašenih z motivom trojnega zavojka in/ali v tehniki *chagrinage*, pripadajoče obročaste pasne garniture, sulične osti, trakaste ščitne grbe, železne fibule in osebne predmete, medtem ko so v ženskih grobovih zastopane predvsem različne železne ali bronaste fibule in pasne verige iz zvitih členov.

Leta 2003 so bili na razstavi Zvoneta Čebula pod okriljem Muzeja Velenje v Mestni galeriji Šoštanj postavljeni na ogled tudi železni predmeti, ki po besedah zbiralca izvirajo iz okolice Celja, pridobil pa naj bi jih pred 20 leti. Preverjanje pri lastniku parcele v Slatini je pokazalo, da so bile najdbe zelo verjetno odkrite pri gradnji že omenjenih stopnic v objekt, saj je vodji izkopavanj že leta 1985 pripovedoval o železnem orodju s tremi vilicami, ki da ga ne more najti.

V prid domneve, da večina predmetov izvira iz doslej neznanega bojevniškega groba v Slatini, govorijo tipološko ujemanje z ostalimi najdbami z grobišča, enaka patina in stanje ohranjenosti, pa tudi čas pridobitve. Na drugi strani ni mogoče spregledati sekača z zakovico, predvsem pa krivega noža in vilic, ki na območju mokronoške skupine nimajo primerjav in jih je moč povezovati z materialno kulturo prostora, poseljenega s Skordiski. Kronološka homogenost okrašenega noža in vilic bi lahko nakazovala, da gre za zbirko najdb iz dveh ali več celot, ki ju najditelj zaradi goste posejnosti grobov na mestu gradbene jame ni prepoznal. Ne smemo izpustiti tudi skrajne, vendar po našem mnenju manj verjetne možnosti, da del predmetov izvira iz Podonavja in so v zbirko dospeli preko trgovine s starinami.<sup>4</sup>

## (DOMNEVNI) GROBNI INVENTAR

### 1. Meč z nožnico (*t. I: 1a,b*).

V celotni dolžini ohranjen meč srednjelatenske sheme s kratko konico in rezilom lečastega preseka. Tik ob sredini rezila potekata zelo ozka in plitva žlebova. Prehod v ročajni trn je značilno sedlast, kar nakazuje, da je imel meč visok zvončast branik, ki ni ohranjen. Ročajni trn pravokotnega preseka je na vrhu ožji.

D. meča 94,3 cm; d. trna 15,2 cm; š. trna 1,5 cm; d. rezila 79,1 cm; največja š. rezila 4,5 cm; teža 584 g.

Osem fragmentov nožnice iz železne pločevine, pri kateri je bila sprednja platica zapognjena čez zadnjo. Zgornja spojka manjka, od spodnjega dela nožnice pa je ohranjena zgolj ena od okroglih ploščic zgornjega konca koničnika. Zanka za obešanje je ozke pravokotne oblike in ima trapezast presek. Iz nje izhajata srčasti ploščici s predrtinama za zakovice, pri čemer iz zaključka na spodnji ploščici segata dva kratka izrastka, zgornja pa se nad odebelitvijo viličasto razcepi v dva kraka.

Najv. š. 4,8 cm; d. zanke s ploščicama 7,7 cm; teža 84, 51, 41, 39, 39, 31, 31, 26, 3 g.

### 2. Pasna garnitura za obešanje meča

a. Železen masiven obroček okroglega preseka. Pr. 6,6 cm; deb. 1,0 cm; teža 98 g (*t. I: 6*).

b. Manjši železen masiven obroček okroglega preseka. Pr. 5,1 cm; deb. 0,8 cm; teža 46 g (*t. I: 5*).

c. Železna obročasta pasna spona z okroglim presekom in s ploščatim hruškastim izrastkom, ki se zaključuje s prikovičnim gobastim gumbom. D. 5,2 cm; pr. obročka 3,9 cm; teža 19 g (*t. I: 4*).

d. Železen obroček okroglega preseka s simetričnim okrasom štirih polkroglastih bradavic, ki jih na obeh straneh spremljata sploščena dela s poglobljenim okrasom močno stilizirane postave z veliko glavo, vodoravno vstran iztegnjenimi rokami in zašiljenim trupom. Na nasprotni strani obročka sta med manjšima kroglastima odebelitvama dve sploščeni krožni razširitvi s konkavno površino. Pr. obroča 6,5 cm; teža 20 g (*t. I: 7*).

### 3. Ščitna grba (*t. 2: 1*).

Deloma poškodovana ščitna grba iz železne pločevine s plosodčasto kaloto sploščene polkrožnega preseka ter psevdotrapezasto oblikovanima krilcema. Ohranjen je le eden od dveh žebeljev z diskasto glavico in s trnom kvadratnega preseka.

Ohr. š. celotne grbe 32,7 cm; v. kalote 13,5 cm; najv. š. kalote 13,3 cm; teža 238 g.

### 4. Sulična ost (*t. I: 3*).

Skoraj nepoškodovana sulična ost z ozkim bikonveksnim listom s sploščenim polkrožnim rebrom in z dolgim tulastim nasadiščem okroglega preseka. Masiven prehod tula v list se začne v močno izraženem rebro. Na začetku nasadišča sta ohranjeni okrogli luknjici za pritrjevanje držaja. Pred položitvijo v grob je bila ost na začetku zadnje tretjine lista namerno zvita.

D. osti 42,1 cm; š. lista 3,5 cm; d. tula 15,4 cm; teža 233 g.

### 5. Sulična ost (*t. I: 2*).

Nepoškodovana sulična ost z ozkim bikonveksnim listom z izrazitim rebrom trikotnega preseka, ki ima težišče v spodnji tretjini. List ostro prehaja v zelo kratko tulasto nasadišče okroglega

<sup>3</sup> Dokumentacijo o najdbi hrani Pokrajinski muzej Celje. Na temu mestu se lepo zahvaljujemo direktorici Darji Pirkmajer, ki nam je posredovala podatke v zvezi z izkopavanjem v Slatini ter omogočila stik z najditeljem grobišča.

<sup>4</sup> Za pomoč in nasvete se zahvaljujemo red. prof. ddr. Mitji Guštinu, za skrbno branje in številne popravke ter pripombe pa dr. Draganu Božiču. Med drugim nas je opozoril na omejeno razprostranjenost sekačev z zakovico na rezilu, na več člankov (npr. Bataille 2001 in Łuczkiwicz 2002), na železno zapestnico iz Kostolca v Srbiji ter na vilice iz Viennea v Franciji in Lozne v Romuniji.

preseka. Na začetku nasadišča sta ohranjeni okrogli luknjici za pritrjevanje držaja.

D. osti 52,0 cm; š. lista 4,4 cm; d. tula 9,1 cm; teža 260 g.

#### 6. Udarni nož (*t. 2: 2*).

Rahlo poškodovan udarni nož oz. sekač z masivnim, navzdol ukrivljenim ročajem pravokotnega preseka. Rezilo ima rahlo usločen hrbet in ravno ostrino. Na začetku ostrine, ki poševo prehaja v ročaj, je na levi strani rezila nameščena polkroglasta zakovica. Ročaj se začne s sodčasto odebelitvijo, ki jo na obeh straneh spremljata ozki rebri, zaključuje pa se v gobasto oz. bikonično oblikovanem gumbu.

Ohr. d. noža 34 cm; d. ročaja 8,5 cm; š. rezila 6,2 cm; pr. zakovice 1,2 cm; teža 349 g.

#### 7. Krivi nož (*t. 2: 4*).

Poškodovan manjši železen nož z ozkim ukrivljenim rezilom. To ima usločen hrbet, ravno ostrino in nekoliko navzdol usmerjeno konico. Kratka ročajna plošča trikotno zašiljene oblike ima ohranjeno zakovico za pritrjevanje. Obe strani rezila sta po sredini okrašeni s plitvo kaneluro polkrožnega preseka, ki jo obrobijata puncirana niza in poteka vzporedno s hrbtom.

Ohr. d. noža 17,2 cm; d. trna 3,3 cm; š. rezila 2,4 cm; teža 39 g.

#### 8. Britev (*t. 2: 5*).

Rahlo poškodovana železna britev z rezilom, ki ima raven hrbet in nekoliko izbočeno ostrino. Kratak, navzdol zakrivljen polni držaj ima konec izveden v obliki konjske glave z odprtimgobcem, zgornji rob držaja pa je okrašen s stilizirano grivo.

Ohr. d. britve 13,6 cm; d. držaja 3,5 cm; š. rezila 3,7 cm; teža 26 g.

#### 9. Škarje (*t. 2: 6*).

Skoraj nepoškodovane železne škarje s trakasto vzmetjo v obliki črke U, ki je na koncu nekoliko razširjena. Rezili imata izbočen hrbet in ravno, v zaobljeno konico prehajajočo ostrino.

D. škarij 19,2 cm; d. rezil 10,0 cm; najv. š. rezil 2,1 cm; teža 58 g.

#### 10. Zapestnica (*t. 2: 10*).

Železna zapestnica masivnega okroglega preseka z rahlo odebeljenimi, presegajočimi konci.

Pr. 8,7 cm; pr. obroča 0,4-0,6 cm; teža 44 g.

#### 11. Fibula (*t. 2: 8*).

Delno poškodovana železna fibula s samostrelno peresovino z osmimi navoji in masivnim trapezastim lokom, ki se širi proti glavi. Fibula ima pravokotno nazaj zavihano nogo s kroglastim gumbom, ki se s trakasto objemko pripenja na lok na njegovem najvišjem delu.

D. 6,6 cm; d. loka 6,0 cm; d. noge 5,2 cm; d. nosilca za iglo 2,5 cm; rekonstr. š. peresovine 3,4 cm; teža 12 g.

#### 12. Fibula (*t. 2: 9*).

Skoraj identična železna fibula.

D. 6,6 cm; d. loka 6,0 cm; d. noge 5,3 cm; d. nosilca za iglo 2,5 cm; rekonstr. š. peresovine 3,0 cm; teža 12 g.

#### 13. Viličasto orodje (*t. 2: 7*).

Delno poškodovane železne vilice s tremi blago ukrivljeni-

mi koničastimi kavljji kvadratnega preseka in cevastim nastavkom za lesen držaj. Zunanja kavlja sta prikovana na osrednje-ga. Ohranjena je polovica dvodelnega cevastega nasadišča. Iz sedlasto oblikovane krivine zunanjih kavljev izhajata gibljivi trakasti razcepki, ki sta prvotno segali skozi nasadišče.

D. 15,4 cm; š. 7,3 cm; teža 87 g.

#### 14. Obroček z zatičem (*t. 2: 3*).

Nesklenjen železen obroček okroglega preseka, v katerem visi ozek zatič iz žice kvadratnega preseka. Poškodovan daljši del se zaključuje z razširitvijo.

Pr. obročka 2,6 cm; deb. 0,4 cm; d. zatiča 4,3 cm; teža 8 g.

## ANALIZA PREDMETOV

### Meč z nožnico

Meč (*t. 1: 1a*) lahko na podlagi oblikovanosti in dimenzij, prisotnosti plitvih žlebov po sredini rezila in oblike prehoda v ročajni trn uvrstimo v mlajši del srednjelatenskega obdobja, značilnosti tega časa pa kažejo tudi fragmentirani ostanki pripadajoče nožnice (*t. 1: 1b*). Podobne srčaste ploščice zanke za obešanje ter razcepljena vodoravna kraka, ki nastopata kot sestavna dela okrepitve pod ustjem, srečamo na vrsti nožnic precej heterogene skupine 6 po Lejarsu, ki vključuje primerke s kratkim koničnikom in je na podlagi grobnih celot datirana v horizont LT C2.<sup>5</sup> Zelo podobne zanke za obešanje s srčastima ploščicama, vendar brez odebelitve nad zgornjo ploščico, imajo npr. neokrašena nožnica iz dvojnega pokopa z vozom iz Odžakov pri Somborju v Bački,<sup>6</sup> nožnica z motivom trojnega zavojka iz enega od dveh grobov iz Bačkega Gradišta<sup>7</sup> ter nožnica meča z žigom merjasca iz uničenih grobov v Kupinovu blizu ustja Save.<sup>8</sup> Oblikovno sorodni ploščici in odebelitev se pojavljajo tudi na nožnici 92 cm dolgega meča iz groba 86 na nekropoli S. Maria di Zevio blizu Verone, datiranega v stopnjo LT C2.<sup>9</sup>

### Garnitura za obešanje meča

Od garniture za obešanje meča so ohranjeni trije obročki (*t. 1: 5-7*) in obročasta spona z majhnim hruškastim izrastkom (*t. 1: 4*), ki je oblikovno sorodna primerkom tipa 4C3b po Bataillu.<sup>10</sup> Spone s hruškastim in ščitastim izrastkom, znane tako v bronasti kot železni izvedbi, predstavljajo vodilno obliko v bojevniških grobovih iz mlajšega dela sred-

<sup>5</sup> Lejars 1994, 24, 36-38, 52-53, 160.

<sup>6</sup> Guštin 1984b, t. 7: 1.

<sup>7</sup> Jovanović 1991, 29, t. 1: 1.

<sup>8</sup> Majnarič-Pandžić 1970, 85, t. 16: 7; 18: 1; sorodno zanko ima tudi nožnica meča iz Zvečke pri Obrenovcu (Todorović 1974, sl. 69).

<sup>9</sup> Salzani 1996, 59-60, tav. 32: C.

<sup>10</sup> Bataille 2001, 454, fig. 7: 61, 62.

njega latena.<sup>11</sup> Gre za izvedenko obročastih spon z ozkim izrastkom, kakršne se najdejo tudi v poznolatskih kontekstih.<sup>12</sup>

Bronaste spones s hruškastim izrastkom poznamo med posamičnimi najdbami z območja dvorišča SAZU v Ljubljani,<sup>13</sup> iz Formina<sup>14</sup> in iz enega od grobov iz Amara v Karniji,<sup>15</sup> železne izvedbe tipa 4C2 pa nastopajo v grobu 23 v Dobovi,<sup>16</sup> grobu 12 iz Zvonimirovega<sup>17</sup> ter med najdbami brez grobnih celot v Slatini.<sup>18</sup> V grobu 13 iz Slatine se pojavlja tudi železna izvedba s ščitastim izrastkom in okrašeno površino gumba (tip 4C3b),<sup>19</sup> podobna primerka pa izvirata tudi iz skupne najdbe Tiefenau na polotoku Enge pri Bernu<sup>20</sup> in iz okolice lesenih ploščadi v plitvinah La Tène na obrežju Neuchâtelskega jezera,<sup>21</sup> od koder je sicer znana še vrsta različnih izvedb srednjelatskih spon. Kronološko umestitev obročastih spon s hruškastim in ščitastim izrastkom v mlajši del srednjelatskega obdobja potrjuje tudi njihov pojav v znanem svetišču z obodnim jarkom Gournay-sur-Aronde.<sup>22</sup>

V okviru garniture za obešanje meča obravnavamo tudi razčlenjen obroček z okrasnimi poglobitvami za emajl (*t. 1: 7*), saj sorodne najdbe izvirajo predvsem iz bojevnških grobov z več neokrašenimi obročki in spono z izrastkom, največ pa jih je bilo odkritih v La Tène, kjer med najdbami prav tako izrazito prevladujeta orožje in vojaška oprema.

Na vzhodu poznamo najboljše primerjave za obročka iz neohranjenih celot iz Sremskih Karlovcev<sup>23</sup> in Surčina.<sup>24</sup> Oba obročka imata skoraj identično oblikovan vrhnji okras iz štirih polkro-

glastih bradavic, ki jih spremljata sploščeni razširitvi s poglobljenima stiliziranimi prikazoma. Za razliko od primerka iz zbirke spodnji razširitvi spremljata le ozki profilirani rebri. Iz Sremskih Karlovcev izvira tudi oblikovno bolj dodelan obroček s simetričnim okrasom parov ploščatih osmic, ki jih ločijo polmesečasti deli obroča, na sredini pa ima razširitvi v obliki ribjega mehurja.<sup>25</sup>

Preprosteje okrašena obročka se pojavljata še v bojevnškim grobu 10 in med najdbami brez znanih celot iz Slatine.<sup>26</sup> Obroček iz groba, ki sodi v fazo LT C2, ima razčlenjeno le eno polovico, na kateri omejujeta kroglaste bradavice na obeh straneh po dve krožni razširitvi s konkavno površino.<sup>27</sup> Obroček s poglobljenima razširitvama ter dvema sploščenenima polkroglastima bradavicama je bil najden tudi v trojnem pokopu bojevnika, ženske in otroka na nekropoli Zvonimirovo v Podravini (grob 12),<sup>28</sup> ki sodi v stopnjo LT C2.<sup>29</sup>

Vsi naštetih obročki so profilirani in okrašeni le s sprednje strani, medtem ko je zadnja stran ploščata in brez ornamenta. Njihov premer znaša večinoma med 5,1 in 7,6 cm. Da dejansko predstavljajo del garniture za obešanje meča, kaže najdba iz znanega groba 12 v München-Obermenzingu.<sup>30</sup> Poleg meča z visokim zvončastim brankom v nožnici s srčastimi ploščicami zanke, sulične osti z dolgim tulom in konveksnim listom, kopita, ščitne grbe s psevdotrapezastimi krilci, dveh fibul, od katerih ena močno spominja na obravnavana primerka iz Slatine, votle zapestnice iz železne pločevine in keramične pokalne posode, je pokop vseboval tudi dva večja in dva manjša obročka usnjene pasne garniture ter obročasto spono s hruškastim izrast-

<sup>11</sup> Poleg naštetih najdb z vzhodnoalpskega območja omenimo še sponi iz groba 6 v Darmsheimu (Fischer 1967, Abb. 3: 11) ter groba 12 v München-Obermenzingu (Krämer 1985, Taf. 60: 11).

<sup>12</sup> Npr. spona iz groba 10 v Slatini (tip 4A2; Pirkmajer 1991, t. 9: 59). V mlajši čas sodi primerek iz groba 1 b na Rojah pri Moravčah (Knez 1977, t. 1: 4). Razširjen začetek ravnega izrastka ima spona brez grobne celote z istega grobišča (ib., t. 11: 12).

<sup>13</sup> Puš 1976, sl. 2.

<sup>14</sup> Pahič 1966, t. 15: 11.

<sup>15</sup> Righi 2001, 114, fig. 6: 8.

<sup>16</sup> Keltoi, 79, sl. 22; Božič 1987, t. 87: 7-10.

<sup>17</sup> Majnarić-Pandžić 2001, t. 10: 5.

<sup>18</sup> Pirkmajer 1991, t. 6: 36.

<sup>19</sup> Ib., t. 13: 88.

<sup>20</sup> Müller 1990, 36, Taf. 2: 22.

<sup>21</sup> Vouga 1923, pl. 8: 27.

<sup>22</sup> Lejars 1996, fig. 8.

<sup>23</sup> Todorović 1974, sl. 52; Majnarić-Pandžić 1970, 46, t. 40: 2; z istega najdišča izvira še en sploščen obroček, pri katerem so bradavice in razširitve le nakazane z izrezom in s plitvimi vrezi (ib., t. 39: 10).

<sup>24</sup> Majnarić-Pandžić 1970, t. 41: 4.

<sup>25</sup> Ib., t. 40: 3.

<sup>26</sup> Pirkmajer 1991, t. 6: 34.

<sup>27</sup> Ib., t. 10: 60.

<sup>28</sup> Majnarić-Pandžić 2001, t. 10: 4.

<sup>29</sup> Guštin 2003, 322.

<sup>30</sup> Krämer 1985, 122, Taf. 60: 10.

kom in zelo podoben, čeprav nekoliko manjši profiliran obroček (pr. 3,8 cm). Ta ima na eni polo-vici manj skrbno izdelana rebra oz. bradavice, na nasprotnem delu pa profilirano zoženje, ki najver-jetneje predstavlja ležišče za kavelj pasne spone. Ta detalj je viden tudi na enem od kar 17 obročkov tega tipa iz La Tène, med katerimi jih je našemu zelo podobnih šest.<sup>31</sup>

### Ščitna grba

Velik umbo s psevdotrapezastimi krilci in žebljema z diskasto glavico (*t. 2: 1*) lahko na podlagi di-menzij in močne zaobljenosti polsodčaste kalote uvrstimo v skupino ščitnih grb, ki se pojavljajo predvsem v mlajšem delu srednjelatskega obd-obja, občasno pa še v zadnjih desetletjih 2. stolet-ja pr. n. št. Najbližji analogiji poznamo iz groba 521 na Kapiteljski njivi v Novem mestu, kjer je bila več kot 35 cm široka grba z nekoliko nižjo kaloto (v. 12,5 cm) in žebljema s polkroglasto glavico najdena skupaj z mečem srednjelatske sheme v nožnici z dvojnoesasto spojko (LT C2/D1),<sup>32</sup> ter v podobni grbi iz groba v Introbiu pri jezeru Como,<sup>33</sup> ki ga je De Marinis datiral na konec stopnje LT C (ocenjena š. ca. 30 cm; v. ca. 13 cm).<sup>34</sup> Obe grbi imata za razliko od obravnavane rahlo usločeni stranici krilc. Bolj zaobljene stranice kalote, ki že spominja na grbe tipov Skorba in Mokronog (Ar-quà Petrarca), ima 14,6 cm visok umbo iz groba 442 na Kapiteljski njivi z mečem z visokim

zvončastim branikom v nožnici srednjelatske sheme (LT C2).<sup>35</sup>

Obravnavana grba je tipološko blizu nad 30 cm dolgim in med 12 in 14 cm visokim primerkom s popolnoma pravokotnimi krilci vrste VI po Rapi-nu,<sup>36</sup> ki se pojavljajo v izvedbah z višjo<sup>37</sup> in nižjo<sup>38</sup> polsodčasto kaloto. Rapin jih je datiral v stopnjo LT C2,<sup>39</sup> po Vitaliju pa se pojavljajo še na preho-du v pozni laten.<sup>40</sup> Tovrstne grbe so sorodne tudi nekaterim primerkom iz skupine s trapezastimi krilci in nekoliko nižjo kaloto vrste VA po Rapinu,<sup>41</sup> ki je značilna predvsem za mlajši del srednjelatskega obdobja.

V horizontu LT C2 se pojavljajo tudi višje grbe (v. 16-17 cm) z ozkimi kalotami in rahlo pahljačastimi krilci, kakršno poznamo iz groba 10 v Slatini,<sup>42</sup> groba 23 v Dobovi<sup>43</sup> in groba 1 v Mokronogu (LT C2/D1),<sup>44</sup> ter grbe vrste Skorba s krilci "metuljas-te" oblike.<sup>45</sup>

### Sulični osti

Sulične osti z bikonveksno oblikovanim listom s trikotnim rebrom in tulom (*t. 1: 3*), ki dosega skoraj polovico celotne osti, sodijo med vodilne oblike mlajšega dela srednjelatskega obdobja, ko se pojavljajo predvsem v celotah s ščitnimi grbami s pravokotnimi ali trapezastimi krilci. Vrsta podob-nih suličnih osti (tip II c po Rapinu) izvira npr. iz kulturnih mest Gournay-sur-Aronde<sup>46</sup> in La Tène,<sup>47</sup> osti enake oblike pa so bile položene npr. tudi v grob 10

<sup>31</sup> Vouga 1923, pl. 8: 18,12,20,23; 50: 11,12.

<sup>32</sup> Križ 2001, 128, sl. 328.

<sup>33</sup> De Marinis 1977, 37, pl. 10: 5.

<sup>34</sup> Podobne oblike in dimenzije kot obravnavani primerek ima tudi okoli 30,3 cm široka in 12 cm visoka grba iz Valične vasi (Teržan 1973, 675, t. 23: 1).

<sup>35</sup> Križ 2001, 121, sl. 288; prim. še kaloto grbe s pravokotnimi krilci iz groba 203 na Kapiteljski njivi z mečem v nožnici srednje-latske sheme - LT C2 (Križ 2001, 100, sl. 155).

<sup>36</sup> Rapin 1988, 45-46, 72-73, 81, fig. 39.

<sup>37</sup> Npr. podobni grbi iz groba 162 na Kapiteljski njivi z mečem v nožnici srednjelatske sheme - LT C2 (Križ 2001, 96, sl. 137, 138), primerka iz groba 523 (LT C2 (?)) - Križ 2001, 131, sl. 342) in groba 27 na nekropoli Casalandri (š. 41,6 cm; v. 14 cm; LT C2; Salzani 1998, 24, tav. 17: 8) ter ožja grba z bolj zaobljenimi stranicami kalote iz groba 131 na nekropoli S. Maria di Zevio (š. 29,6 cm; v. 9,8 cm; Salzani 1996, tav. 61: 2). Slednja je bila najdena skupaj z mečem v nožnici, ki že kaže značilnosti stopnje LT D, kot sta dvojnoesasta spojka in para izrastkov na koničniku. Podobna nožnica in nekoliko večja grba (š. 42 cm; v. 14,4 cm) izvirata iz groba iz Gomorie (Vitali 1989, fig. 5; 6: 19).

<sup>38</sup> Npr. Slatina (gr. 19) z mečem v nožnici srednjelatske sheme - LT C2 (Pirkmajer 1991, t. 16: 110), Kapiteljska njiva (gr. 227 in 522; najdeni z mečema v nožnici srednjelatske sheme - LT C2 (Križ 2001, sl. 169, 338).

<sup>39</sup> Rapin 1988, 72-73, 78.

<sup>40</sup> Vitali 1989, 20.

<sup>41</sup> Rapin 1988, 72, 78, 81.

<sup>42</sup> Pirkmajer 1991, t. 11: 70.

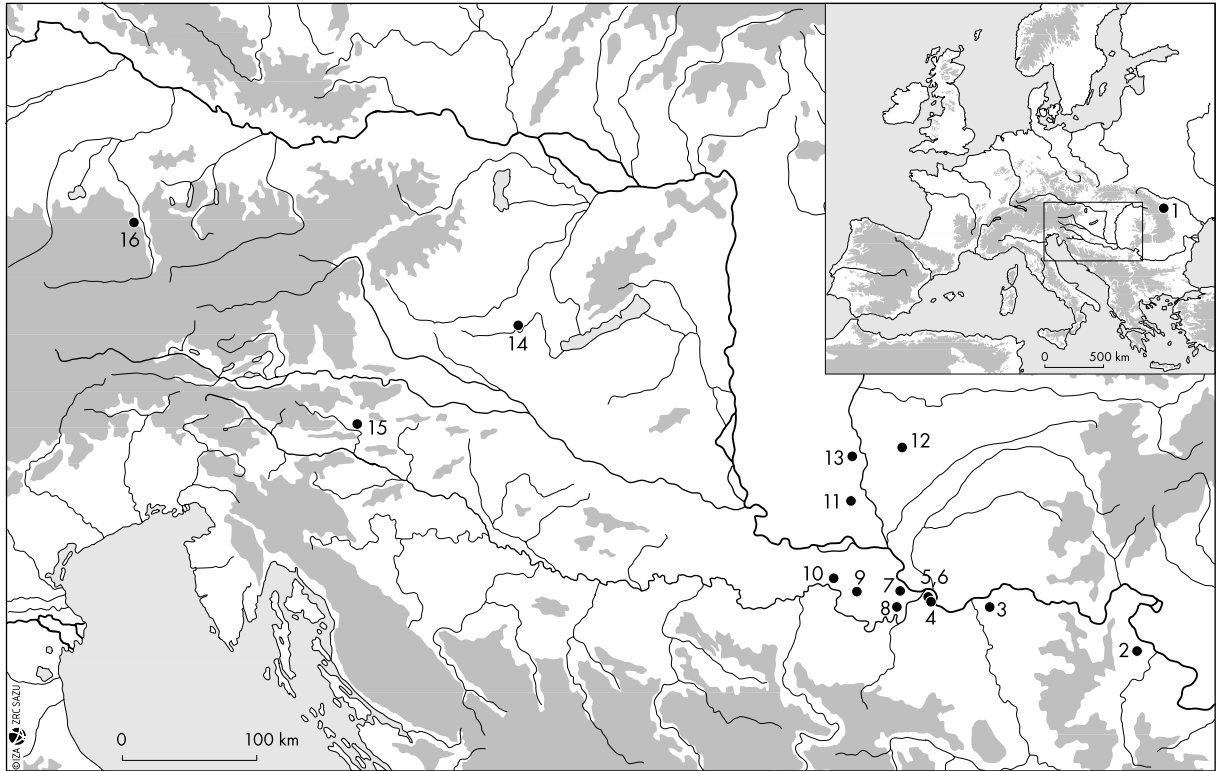
<sup>43</sup> Keltoi, 79, sl. 22.

<sup>44</sup> Guštin 1977, t. 9: 3.

<sup>45</sup> Vrsta Rapin VII B (Rapin 1988, 82, fig. 33: A).

<sup>46</sup> Rapin 1988, 119-120, 133, fig. 58 bis; 66.

<sup>47</sup> Vouga 1923, pl. 10.



Karta 1: Sekači z zakovico na začetku rezila. Glej seznam 1 str. 277-278.

Map 1: Slashing knives with the rivet at the beginning of the blade. See list 1 p. 286-287.

iz Slatine<sup>48</sup> ter že omenjene pokope iz Odžakov,<sup>49</sup> Darmsheima<sup>50</sup> in München-Obermenzinga.<sup>51</sup>

Posebej zanimiva je druga sulična ost z dolžino 52 cm, ki ji ne poznamo neposrednih primerjav (*t. 1: 2*). Ima ozek, konvexno oblikovan list s težiščem v spodnji tretjini ter oster prehod v kratek tul, ki se širi proti odprtini. Čeprav bi lahko njena velikost pričala tudi o mlajši dataciji, saj so posebej dolgi primerki tega orožja na drogu značilni predvsem za 1. stoletje pr. n. št.,<sup>52</sup> se nad 50 cm dolge osti s klasičnim listom in kratkim, razširjenim tulom pojavljajo že v mlajšem delu srednjega latena.<sup>53</sup> Ost z nekoliko širšim listom enakega težišča (d. 45,2 cm; š. lista 6 cm) je bila najdena v grobu iz Gomorie, ki ga je Vitali datiral v zadnja desetletja 2. stoletja pr. n. št.<sup>54</sup>

Podobno težišče je značilno tudi za skupino dolgih suličnih osti s kratkim tulom in konvexnim lis-

tom, ki se v zgornji tretjini zoža in tako dobi bajonetno obliko. Takšne, pogosto okrašene sulične osti so značilne za poznolatsko obdobje in se pojavljajo skoraj izključno na germanskem in zahodnokeltskem območju.<sup>55</sup>

### Sekač

Masivni noži oz. sekači s klinastim presekom rezila in z ukrivljenim polnim ročajem (*t. 2: 2*) predstavljajo skoraj nepogrešljiv del inventarja vzhodnokeltskih bojevnških grobov. Glavni element za njihovo splošno tipološko-kronološko opredelitev predstavlja oblikovanost zaključka ročaja, pri čemer so v srednjelatenskem obdobju pogosti ročaji z bikonično oz. gobasto oblikovani gumbi,

<sup>48</sup> Pirkmajer 1991, t. 10: 68.

<sup>49</sup> Guštin 1984b, t. 6: 6.

<sup>50</sup> Fischer 1967, Abb. 3: 4.

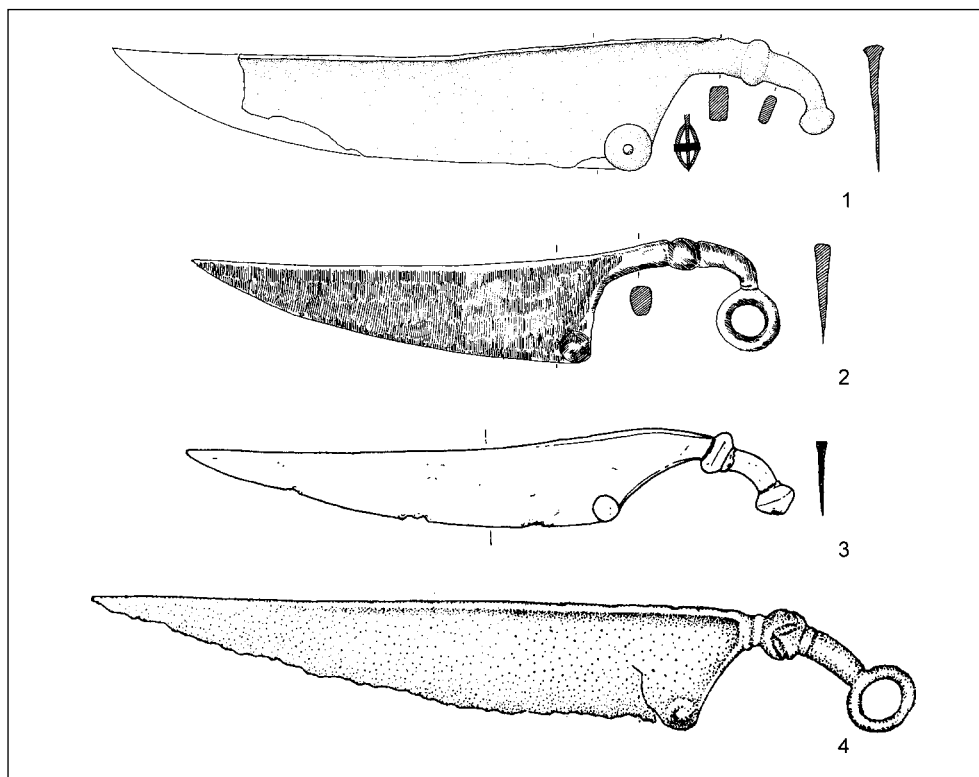
<sup>51</sup> Krämer 1985, Taf. 60: 4.

<sup>52</sup> Božič 1981, 319, oblika 31, t. 3: 31a, 31b.

<sup>53</sup> Npr. 59,3 cm dolga sulična ost iz gr. 532 na Kapiteljski njivi (Križ 2001, 133, sl. 354).

<sup>54</sup> Vitali 1989, 12-13, 21, fig. 6: 17.

<sup>55</sup> Med najdbami te skupine omenimo 43,6 cm dolgo sulično ost iz Ljublanice pri Bevkah s plitvim jedkanim vzorcem mnogokotnikov in blago fasetiranim tulom (Vuga 1980, 202, sl. 3: 1) ter več podobnih, deloma okrašenih primerkov iz reke Zihl/Thielle pri Portu (Wyss, Rey, Müller 2002, 60, Taf. 41: 83,85,88,89,98; 42: 83,85,88,89,98; 47: 83,85).



Sl. 1: 1 Dürrenberg; gr. 28/1 (po Penninger 1972, Taf. 26: 25), 2 Kostolac - Pečine; gr. G-1-3 283 (po Jovanović 1984, 68, fig. 4: 4), 3 Čubarsko brdo (po Popović 1991, sl. 1: 3), 4 Lozna (po Teodor 1980, Abb. 8: 2). M. = 1:4.

Fig. 1: 1 Dürrenberg; gr. 28/1 (after Penninger 1972, Taf. 26: 25), 2 Kostolac - Pečine; gr. G-1-3 283 (after Jovanović 1984, 68, fig. 4: 4), 3 Čubarsko brdo (after Popović 1991, fig. 1: 3), 4 Lozna (after Teodor 1980, Abb. 8: 2). Scale = 1:4.

pa tudi takšni, ki se končajo z obročkom. Nož iz zbirke ima na prehodu rezila v ročaj za ta čas običajno sodčasto odebelitev, posebnost pa predstavlja polkroglasta zakovica na začetku ostrine.

Izstopa dejstvo, da sekačev z zakovicami na območju mokronoške skupine praktično ne poznamo, nasprotno pa se v razmeroma velikem številu pojavljajo v srbskem Podonavju (*seznam 1 / karta 1*), čeprav so običajni primerki z odebelitvijo na začetku ter gumbom ali obročkom na koncu ročaja zastopani na celotnem vzhodnokeltskem območju.<sup>56</sup> Različico sekačev z gumbom na koncu ročaja in zakovico<sup>57</sup> na vzhodu predstavljajo noži, pri katerih sodčasto odebelitev na ročaju nadomesti kockast gumb,<sup>58</sup> zakovice pa se pojavljajo predvsem na rezilih nožev,

pri katerih se ročaj konča z obročkom.<sup>59</sup> Konstrukcija zakovic oz. gumbov na začetku rezila, ki so verjetno preprečevali zdrs, zaradi pomanjkljivih objav pogosto ni razvidna. Za razliko od enostranske zakovice na primerku iz domnevnega groba se zdi, da ima večina ostalih nožev iz Podonavja sploščeni polkroglasti ploščici na obeh straneh, pritrjeni z eno zakovico.

Proti zahodu, kjer grobnih najdb nožev pred stopnjo LT D skorajda ni, so skoraj identični primerki s širokim rezilom in kratkim zakrivljenim ročajem z dvema gumboma znani z Dürrenberga (sl. 1: 1). Zanimivo je, da se tudi v izvedbi z gumbom iz dveh zakovičenih ploščic nizkega polkroglastega preseka na začetku rezila tam pojavijo že v zgodnjelatskih grobovih,<sup>60</sup> medtem ko na vzhodu

<sup>56</sup> Božič 1981, oblika 24 a; id. 1987, 874, sl. 44: 6, 7; npr. noži iz Slatine (Pirkmajer 1991, t. 6: 31), groba v Velikem Mraševu (Guštin 1977, t. 8: 3), groba 12 v Zvonimirovem (Majnarić-Pandžić 2001, t. 2: 2) in groba 59 s Karaburme (Todorović 1972, t. 20: 1).

<sup>57</sup> Grobne najdbe: Čubarsko brdo v Đerdapu (sl. 1: 3; Popović 1991, sl. 1: 3), grob 39 na Rospji Čupriji (Božič 1981, t. 7: 8); posamične najdbe: Andrásida (Hunyady 1942-1944, t. 52: 7).

<sup>58</sup> Karaburma - brez grobne celote (Todorović 1968, t. 33: 1; id. 1974, sl. 67).

<sup>59</sup> Grobovi: G-1-3 283 s Pečin pri Kostolcu (Jovanović 1984, 68, fig. 4: 4), Veliko Selo - zakovica s tremi vrezji (Božič 1980, t. 27: 3; Todorović 1971, t. 20: 2), Ritopek (id. 1973-1974, sl. 7). Brez grobnih celot: Surčin (Majnarić-Pandžić 1970, t. 44: 2), okolica Sremske Mitrovice (Todorović 1968, t. 44: 8; 46: 1), Gospodinci (ib., t. 50: 12).

<sup>60</sup> Pauli 1978, 253, Abb. 35: 107.

v ta čas sodi le primerek iz groba G-1-3 283 na Pećinah pri Kostolcu (*sl. 1: 2*). Najmlajšo datirano najdbo predstavlja nož z obročkom na koncu ročaja iz poznolatenskega orodnega depoja Lozna v Romuniji (*sl. 1: 4*).<sup>61</sup>

Večina raziskovalcev je mnenja, da sekači primarno niso bili uporabljani kot orožje, temveč kot noži za najrazličnejša opravila v hišnem gospodarstvu, npr. razkosavanje mesa.<sup>62</sup> Enega od argumentov za to trditev predstavlja tudi dejstvo, da se ne pojavljajo praktično na nobenem kulturnem mestu z ritualno odloženim orožjem.

### Krivi nož

Krivi noži s kratko ročajno ploščo trikotne oblike in eno zakovico (*t. 2: 4*) sodijo med vodilne oblike poznolatenskega obdobja v hrvaškem in srbskem Podonavju,<sup>63</sup> kjer se obdržijo še v zgodnjerimski čas, drugod pa so redki.<sup>64</sup> Nasprotno so za vzhodno ležeča trako-dačanska območja severozahodne Bolgarije, Male Vlaške (Oltenije) in jugozahodne Sedmograške oz. prostor skupine Padea-Panaghiurski Kolonii značilni daljši ukrivljeni noži oz. bodala z ročajno ploščo,<sup>65</sup> imenovani *sica*, ki se pri Skordiskih in drugod pojavljajo le občasno.<sup>66</sup> Zanje je značilen zoomorfen okras (predvsem motiv ujede in spremljajočih sončnih simbolov), medtem ko se

preprostejši ornamenta v tehniki punciranja in tolčenja (geometrijski liki, polmesec, različni nizi) na rezilih nožev in suličnih osti pojavljajo na širšem območju srednjega in spodnjega Podonavja, vendar praktično ne dosežejo s Tavriski poseljenega prostora (*seznam 2 / karta 2*).

Ukrivljeni noži s trikotno ročajno ploščo z območja Skordiskov imajo pod hrbtom rezila občasno plitev žleb za odtok krvi,<sup>67</sup> ki ga pogosteje kot punciranje<sup>68</sup> spremljajo vtolčeni geometrijski liki.<sup>69</sup> Jedkan okras, ki je bil v tem času razširjen predvsem pri Germanih in zahodnih Keltih,<sup>70</sup> je na prostoru med vzhodnimi Alpami in Balkanom izpričan le na listih nekaterih suličnih osti (*seznam 2 / karta 2*), medtem ko uporaba te tehnike pri nožih ni dokazana.

### Osebna oprema

Britev z ravnim hrbtom in nekoliko izbočeno ostrino ter navzdol zakrivljenim držajem (*t. 2: 5*) ima zaključek izveden v obliki konjske glave z odprtim gobcem, vitek ročaj pa je okrašen s stilizirano grivo. Med okrašenimi primerki omenimo še britev z razširitvijo v obliki račje glavice z odprtim kljunom iz groba v Vojakovcu pri Križevcih<sup>71</sup> ter britev z delno ohranjenim ročajem iz Novih Banovcev,<sup>72</sup> medtem ko ima britev iz Malunja vodoraven ročaj, pri katerem ima raca zaprt kljun.<sup>73</sup> Okras

<sup>61</sup> Teodor 1980, 138, Abb. 8: 2.

<sup>62</sup> Pauli 1978, 254-258.

<sup>63</sup> Božič 1981, t. 3: 37; npr. Karaburma, gr. 28 (Todorović 1972, t. 11: 1), gr. 32 (ib., t. 13: 1), gr. 44 (ib., t. 17: 4), gr. 94 (ib., t. 29: 2).

<sup>64</sup> Pripadnost noža inventarju moškega pokopa bi lahko potrjevala tudi njegova dolžina, saj je analiza nožev z grobišča Karaburma pokazala, da se v ženskih grobovih oz. tistih brez orožja pojavljajo le nožički, krajši od 15 cm (Božič 1980, 62, tab. C).

<sup>65</sup> Rustoiu 2002, 57-61, fig. 38.

<sup>66</sup> Božič 1981, t. 3: 36.

<sup>67</sup> Npr. grob 145 s Karaburme (Todorović 1972, t. 36: 1).

<sup>68</sup> Glej npr. zakrivljen nož z navpično profiliranim prehodom v rezilo iz lokacije Zemun-Gardoš. Pod hrbtom ima vodoraven niz punciranih vbodov (Majnarić-Pandžić 1970, t. 46: 6). Podoben punciran okras imajo tudi noži iz groba 25 na Karaburmi (Todorović 1972, t. 9: 1), Novih Banovcev (Majnarić-Pandžić 1970, t. 28: 5) in Kupinova (Majnarić-Pandžić 1970, t. 16: 8).

<sup>69</sup> Nekoliko bolj ukrivljena noža izvira iz groba 1 iz Ajmane v Đerdapu, v katerem so med drugim našli tudi bronasto zajemalko tipa Pescate. Oba noža označuje kratek trikotni nastavek za ročaj z luknjo za zakovico. Večji, 30,6 cm dolg primerek je pod hrbtom okrašen z motivom vtolčenih zvezdic, ki ga spremlja širok žleb (Stalio 1986, fig. 42). Manjši primerek (11,7 cm; ib., fig. 40) ima tik pod hrbtom ozek žleb, ki ga spremlja niz vtolčenih, izmenično postavljenih trikotnikov. Niz in žleb sta na sredini prekinjena z eno zvezdico, podobno tistim na večjem nožu. Podoben okras treh krožcev v prekinjenem žlebu ima tudi nekoliko krajši nož z daljšim ročajnim nastavkom iz groba 3/1983 na bližnji nekropoli Vajuga-Pesak, ki je med drugim vseboval recipient bronaste ročke vrste Gallarate in meč v nožnici z ostrogastim zaključkom (Popović 1991, sl. 4: 8). Iz Vajuge izvira še ena večja sica z okrasom niza jedkanih trikotnikov in žleba, prekinjenim z motivom štirih koncentričnih krožcev (Popović 1991, sl. 3: 3). Kratka, s po dvema krožcema okrašena noža z železnim branikom sta znana tudi iz grobov 14 in 18 na Karaburmi (Todorović 1972, t. 5: 1; 7: 5), iz groba 13 pa izvira ozek nožič z rombično ročajno ploščo in trikotnim rezilom, okrašenim s koncentričnim krožcem (ib., t. 5: 3). Z nizom izmenično postavljenih jedkanih trikotnikov in s krožcem je okrašen nož iz Dalja z dolgo ročajno ploščo s tremi luknjami za zakovice (Majnarić-Pandžić 1970, t. 24: 10).

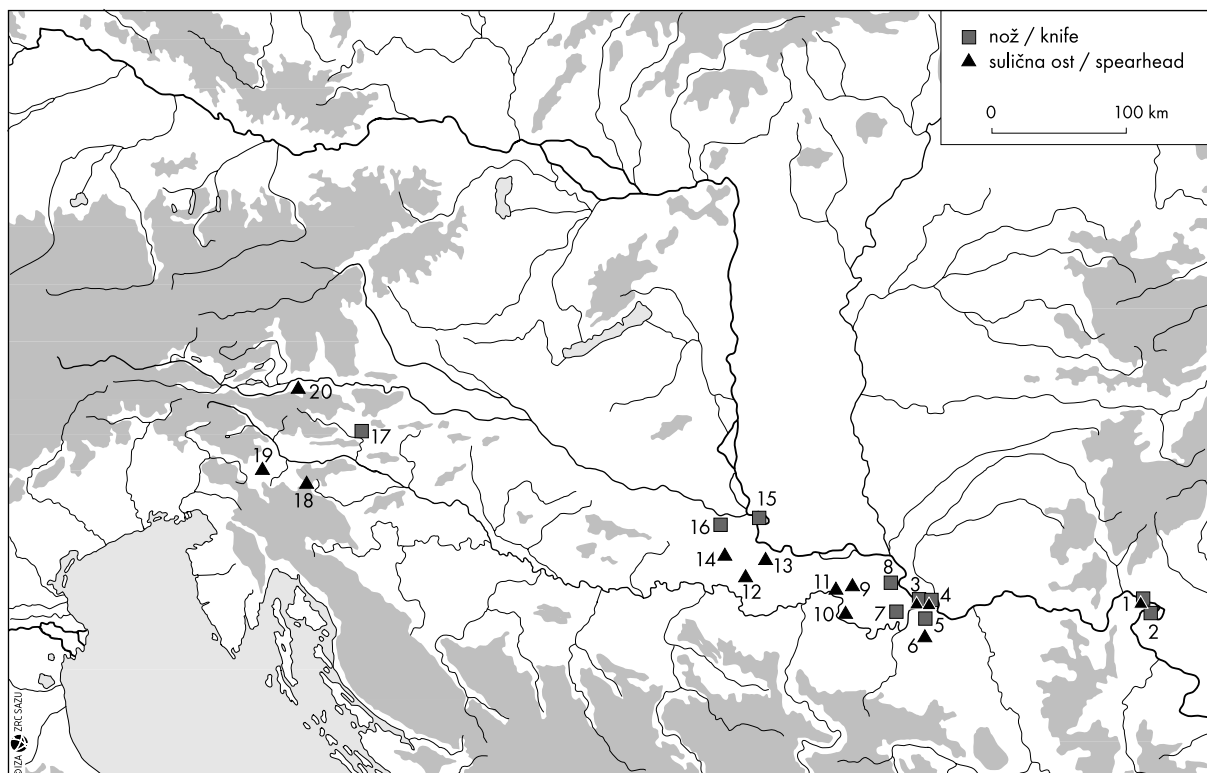
<sup>70</sup> Nazadnje pri Łuczkiwicz 2002.

<sup>71</sup> Majnarić-Pandžić 1970, t. 47: 2.

<sup>72</sup> Ib., t. 28: 3.

<sup>73</sup> Ib., 35, t. 36: 9.





Karta 2: Najdišča poznolatenskih suličnih osti in nožev z jedkanim, tolčenim in punciranim okrasom med vzhodnimi Alpami in srbskim Podonavjem. Glej seznam 2 str. 278.

Map 2: Sites of late La Tène spearheads and knives with etched, embossed and punched decoration between eastern Alps and Danube basin. See list 2 p. 287.

spominja na zaključek železne igle iz groba 436 na Kapiteljski njivi,<sup>74</sup> konjske glavice pa srečamo tudi na sponah cele vrste bronastih sklepancev starejše faze srednjelatenskega obdobja.<sup>75</sup>

Škarje iz Slatine sodijo med značilne oblike srednjelatenskega obdobja,<sup>76</sup> pri čemer rahla izbočenost vrha ročaja že spominja na tako imenovane omega ročaje iz stopenj LT C2<sup>77</sup> in D1.

### Noša in nakit

Skoraj identični železni fibuli z okroglim gumbom na nogi, ki se pripenja na sam konec pravokotnega loka (*t.* 2: 8,9), lahko na podlagi širine loka pri glavi ter peresovine z osmimi navoji uvrsti-

mo v mlajši del srednjega latena. Ta oblika fibul najverjetneje predstavlja tipološko izvedenko primerkov s krajšo nogo in večjo peresovino s štirimi navoji, ki so značilni za stopnjo LT C1.<sup>78</sup> Obravnavani tip je na območju mokronoške skupine znan npr. iz grobov 5 v Dobovi<sup>79</sup> in 156 na Kapiteljski njivi,<sup>80</sup> sorodna fibula pa je bila pridana tudi v grobu 12 iz München-Obermenzinga.<sup>81</sup> Več takšnih fibul je bilo odkritih v grobu iz Arceta v provinci Reggio Emilia, ki ga je De Marinis datiral v stopnjo LT C1,<sup>82</sup> čeprav je verjetneje, da pripada mlajšemu delu srednjega latena.

Železne zapestnice okroglega preseka s presegačimi zaključki (*t.* 2: 10), ki imajo premer okoli 8 cm, sodijo med preproste oblike nakita, ki se v moških grobovih pojavljajo že od zgodnjega latena

<sup>74</sup> Križ 1999.

<sup>75</sup> Božič 1987, 874-875, sl. 44: 10.

<sup>76</sup> Npr. grob iz Odžakov (Guštin 1984b, t. 6: 3).

<sup>77</sup> Božič 1987, 876, sl. 45: 13.

<sup>78</sup> Gebhard 1991, 15, Abb. 5: 13a.

<sup>79</sup> Guštin 1984a, Abb. 19: 21.

<sup>80</sup> Križ 2001, sl. 116.

<sup>81</sup> Krämer 1985, Taf. 60: 2; podoben primerek z okrašeno nogo izvira npr. tudi iz Bačkega Gradišta (Jovanović 1991, t. 4: 6).

<sup>82</sup> De Marinis 1977, 33, pl. 7: 2,3,5-7.

naprej.<sup>83</sup> Predvsem na poselitvenem območju Skordiskov so pogostejše v poznem latenu.<sup>84</sup>

### Vilice

Čeprav praktična uporaba kavljasto zakrivljenih vilic s kratkim prečnim cevastim nastavkom (*t.* 2: 7) ni popolnoma jasna, se podobna orodja v literaturi največkrat obravnavajo skupaj z viličastimi zajemalkami za dvigovanje kuhanega mesa in drugih jedi iz kotla, znanih iz upodobitev in literarnih omemb grško-etruskega sveta (gr. *creagra*; lat. *harpago*). Po italških vzorih izdelane železne vilice se pojavijo v horizontu Ha C,<sup>85</sup> v številnih različicah pa so posebej pogoste v poznem latenu.<sup>86</sup> Takrat se na območju srednjeevropske kulture opid pojavljajo dvo- in trorogljaste vilice z gladkim, pravokotnim ali tordiranim ravnim nastavkom, ki se konča z obročkom ali pa s tulastim oz. trnastim nasadiščem za lesen držaj. Zaradi lažjega zajemanja je del z roglji, ki so navadno med seboj prikovani ali zakovičeni, pravokotno zakrivljen vstran.<sup>87</sup>

Poleg najdb v naselbinah so vilice za meso v poznem latenu znane tudi iz orodnih depojev<sup>88</sup> ter grobov in svetišč, kar nazorno kaže, da so imele poleg uporabe v vsakdanjem življenju pomembno vlogo tudi v pogrebne obredju in daritvenih pojedinah. Vilice z več prikovičnimi roglji in tordiranim držajem so posebej razširjene v južnoalpskih dolinah,<sup>89</sup> najdemo pa jih tudi na cenomanskih grobiščih v okolici Verone,<sup>90</sup> svetišču Lågole di Calalzo<sup>91</sup> in v Posočju.<sup>92</sup>

Tudi kavljasto zakrivljene vilice z ročajem, ki je bil glede na dvodelni cevast nastavek iz železne pločevine očitno lesen, imajo primerjave med poznolatskim gradivom. Znani so primerki z dvema do štirimi, bolj ali manj zakrivljenimi roglji in različnimi nasadišči. Zaradi majhne debeline pločevine dvodelen cevast nastavek pogosto ni ohranjen, vendar o njem pričajo razcepke, ki so utrjevale nasaditev.<sup>93</sup> V opidumih se pojavljajo tudi bolj rustikalno izdelane vilice s kratkim tordiranim nastavkom in enodelnim cevastim nasadiščem.<sup>94</sup>

Viličasta orodja so precej pogosta tudi v poznolatskih grobovih hrvaškega in srbskega Podonavja,<sup>95</sup> od koder poznamo najboljše primerjave za vilice iz zbirke. Orodje iz groba 172 na Karaburmi ima štiri v sredini tordirane roglje s kvadratnim presekom in ukrivljeno konico (*sl.* 2: 1). Roglji so kovani iz enega kosa, pri čemer sta zunanja na začetku sedlasto ukrivljena, osrednja dva pa izhajata iz razširjenega trna. Vilice so imele lesen držaj, na katelega so bile pritrjene z dvodelnim cevastim okovom. Poleg osrednjega trna iz tula izhajata dve razcepki, zapognjeni čez sedlasta dela zunanjih rogljev.<sup>96</sup> Preprostejša izvedba tega tipa se pojavlja tudi v bogatem grobu 222. Vilice z zapognjenim trakastim nastavkom imajo tri roglje, ki so med seboj povezani z osmičasto zvitima spojčkama.<sup>97</sup>

Podobne vilice s cevastim nastavkom so bile najdene tudi v okviru depojske (?) najdbe na naselbini Larina pri Lyonu, ki vsebuje pretežno gradivo iz 1. stoletja pr. n. št.,<sup>98</sup> ter v veliki najdbi poznolatskega orodja iz močvirja pri Lozni v

<sup>83</sup> Npr. grob G-1-3 283 s Pečin pri Kostolcu (LT B2; Jovanović 1984, 67, 71, fig. 2: 6; 4: 1), grobova 10 in 25 iz Dobove (Guštin 1981, Abb. 3: 2), grob 1 z Visoke Ravne v Brestoviku (Božič 1981, t. 7: 6) in pokop v Odžakah (Guštin 1984b, t. 6: 2).

<sup>84</sup> Npr. grobovi 4, 18, 110 in 137 s Karaburme (Todorović 1972, t. 1: 2; 7: 2,3; 32: 6; 36: 6).

<sup>85</sup> V grobu iz velike gomile v Gornji Radgoni so bile najdene bronaste vilice s sedmimi roglji in tulastim nastavkom (Teržan 1990, 86, sl. 19: 7).

<sup>86</sup> Perrin 1990, 63-69.

<sup>87</sup> Jacobi 1974, 126-129.

<sup>88</sup> Glej npr. tudi vilice v depozu iz Kijeva pri Vrliki v dalmatinskem zaledju (Milošević 1986, 104, 116, sl. 7: 5; 12: 2).

<sup>89</sup> Nothdurfter 1979, 60-62, Taf. 43.

<sup>90</sup> Salzani 1998, tav. 28: 3; 38: 5.

<sup>91</sup> Fogolari, Gambacurta 2001, 295, fig. 550.

<sup>92</sup> Guštin 1991, 66, t. 17: 6; 45: 4; v pozni laten najverjetneje sodijo tudi trorogljaste vilice z Ajdovskega gradca (Gabrovec 1966, t. 3: 1).

<sup>93</sup> Npr. vilice z zakrivljenima konicama in razcepko za pritrjevanje, ki v grobu 3 iz Sotina nastopa skupaj z dolgim tordiranim ražnjem z obročkom (Majnarić-Pandžić 1972-1973, t. 4: 1,11; Božič 1981, t. 9: 6,7).

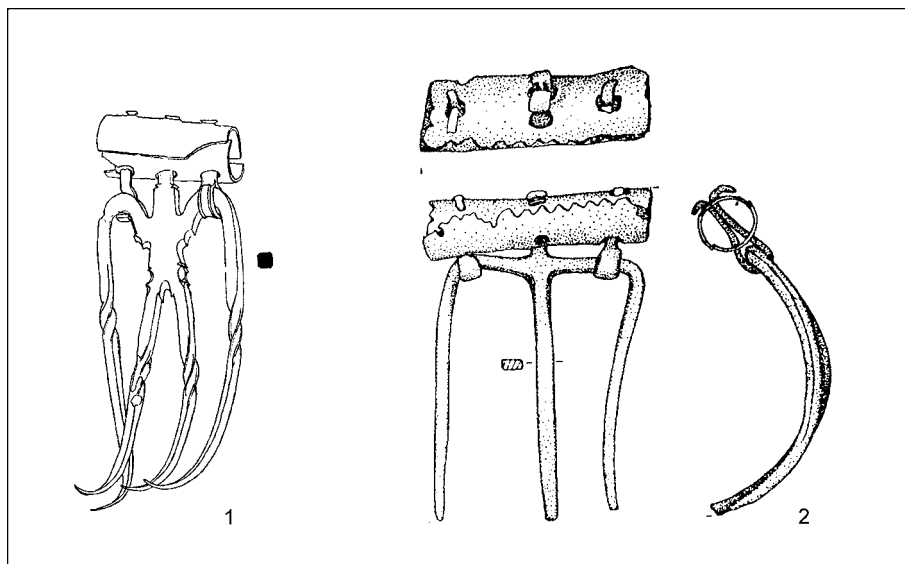
<sup>94</sup> Pič 1903, t. 35: 19-21.

<sup>95</sup> Božič 1981, 320, t. 4: 41. V grobu 12 s Karaburme so bile skupaj z bronasto zajemalko tipa Pescate najdene trorogljaste vilice z izkovanim tulastim nastavkom, pri katerih sta dva stranska roglja prikovičena na srednjega (Todorović 1972, t. 4: 3). Podobna kombinacija je dokumentirana tudi v grobu 97 z ravnimi vilicami z dolgim tordiranim ročajem in razcepljenim dvorogljastim vrhom (ib., t. 30: 9,10,13). Iz groba 50 izvira fragmentiran trorogljast primerek (ib., t. 18: 3). Trorogljaste vilice z dolgim tordiranim ročajem, ki ima na koncu obroček, ter podoben raženj so bili najdeni tudi v Obrežu v Sremu (id. 1968, t. 49: 10,11).

<sup>96</sup> Id. 1972, t. 38: 9.

<sup>97</sup> Ib., t. 39: 8; podobne vilice s tremi tordiranimi roglji in eno spojko so znane tudi z najdišča Dalekovod v Ritopeku (id. 1971, 131, t. 60: 7).

<sup>98</sup> Perrin 1990, 66, fig. 55: 232.



Sl. 2: 1 Karaburma; gr. 172 (po Todorović 1972, t. 38: 9), 2 Lozna (po Teodor 1980, Abb. 9: 4). M. = 1:3.  
Fig. 2: 1 Karaburma; gr. 172 (after Todorović 1972, Pl. 38: 9), 2 Lozna (after Teodor 1980, Abb. 9: 4). Scale = 1:3.

Romuniji (sl. 2: 2),<sup>99</sup> kar nekaj različno ohranjenih primerkov z dvema ali tremi roglji pa srečamo tudi med poznolatskim gradivom z naselbine na griču Sainte-Blandine v kraju Vienne.<sup>100</sup>

### KOMENTAR

Glede na tipološko-kronološko opredelitev predmetov ter v uvodu predstavljena vprašanja o izvoru najdb se dotaknimo naprej možnosti, da gre za vsebino enega samega bojevniškega pokopa. Vsekakor ne gre spregledati razmeroma visoke in predvsem enakomerne stopnje ohranjenosti pridatkov, pa tudi odsotnosti namernih poškodb z izjemo ene od suličnih osti, ki kaže, da so bili predmeti, tako kot pri večini grobov iz Slatine, v jamo položeni nepoškodovani. Glavnina predmetov, t. j. meč z nožnico, pasna garnitura, sulična ost z bikonveksnim listom, škarje, britev in fibuli, tvori značilen inventar moškega pokopa mlajše faze srednjelatenskega obdobja, ki ima poleg drugih celot iz Slatine v Rožni dolini dobro primerjavo v referenčnem grobu 12 iz München-Obermenzinga.<sup>101</sup> Iz te slike deloma izstopa sekač z zakovico na rezilu, ki na območju mokronoške skupine nima primerjav.

V domnevni celoti so bolj "problematični" okrašen krivi nož in vilice, ki so znani izključno v pozno-

latenskih kontekstih, opozoriti pa velja tudi na ščitno grbo in daljšo sulično ost, saj se podobno orožje pojavlja tako v horizontu LT C2 kot še na prehodu v naslednjo stopnjo. Če bi šlo za en pokop mokronoške skupine, izstopa neobičajna kombinacija meča, dveh suličnih osti in dveh nožev, na katero prav tako pogosteje naletimo v poznolatskih grobovih srbskega in hrvaškega Podonavja. Pripadnost vsega predstavljenega gradiva eni grobni celoti se zdi zaradi precejšnjega kronološkega razpona manj verjetna, zanika pa jo tudi skoraj popolna odsotnost pokopov stopnje LT D na Štajerskem, značilna tudi za Češko, Moravsko in Madžarsko. V prizmi teh dejstev ni izključeno, da del predmetov iz zbirke v resnici izvira iz nezakonitih izkopavanj v Podonavju.

*Seznam 1 | Karta 1: Sekači z zakovico na začetku rezila.<sup>102</sup>*

1. Lozna (Teodor 1980, 138, št. 45, Abb. 8: 2)
2. Čubarsko brdo (Popović 1991, sl. 1: 3)
3. Kostolac-Pećine; gr. G-1-3 283 (Jovanović 1984, 68, fig. 4: 4)
4. Ritopek-Plavinački potok (Todorović 1973-1974, sl. 7)
5. Beograd-Karaburma (Todorović 1968, t. 33: 1; id. 1974, sl. 67)
6. Beograd-Rospi Čuprija; gr. 39 (Todorović 1967, 194, sl. 4; Božić 1981, t. 7: 8)
7. Surčin (Majnarić-Pandžić 1970, t. 44: 2)
8. Kupinovo (Todorović 1968, 150, t. 44: 8; Majnarić-Pandžić 1970, 84, t. 15: 4)

<sup>99</sup> Teodor 1980, 139, Abb. 9: 4; 12: 1.

<sup>100</sup> Chapotat 1970, pl. 21: 10,11,16,17,22.

<sup>101</sup> Krämer 1985, Taf. 60.

<sup>102</sup> Dr. Dragana Božiću se zahvaljujemo za opozorilo na sekače z zakovico iz Ade, Kostolca, Kupinova, Lozne, Nikincev, jugovzhodne Panonije in z neznanega najdišča, na okrašeni krivi nož iz Osijeka ter na okrašene sulične osti iz Rume, Sotina, Sremske Mitrovice in Subotića.

9. Nikinci (Todorović 1958, 28, sl. 4)
10. Sremska Mitrovica-okolica (Todorović 1968, t. 46: 1)
11. Gospodinci (Todorović 1968, t. 50: 12; Knežević-Jovanović 2003, 289, t. 4: 3)
12. Veliko Selo (Todorović 1971, 29-30, t. 20: 2)
13. Ada (Maráz 1982, 107, t. 1: 4)
14. Andrásida (Börzsönyi 1911, ábra 7; Hunyady 1942-1944, Taf. 52: 7)
15. Slatina v Rožni dolini? (t. 2: 2)
16. Hallein-Dürrenberg (Pauli 1978, 253, Abb. 35: 107)
17. Jugovzhodna Panonija (Reinecke 1907, 45, Abb. 9: i; Hunyady 1942-1944, Taf. 31: 1)
18. Neznano najdišče (*Jb. Röm-Germ. Zentmus.* 47/2, 2000 [Mainz 2003] 763, Abb. 50)

*Seznam 2 / Karta 2: Najdišča poznolatenskih suličnih osti in nožev z jedkanim, tolčenim in punciranim okrasom med vzhodnimi Alpami in srbskim Podonavjem.*

#### Sulične osti

1. Mala Vrbica-Ajmana; gr. 1 (Stalio 1986, fig. 43; 44)
3. Beograd-Rospri Čuprija; gr. 27 (Todorović 1956, 47, sl. 30; Garašanin 1960, Abb. 1; Todorović 1968, t. 31: 8)
4. Beograd-Karaburma; gr. 28 (Todorović 1972, t. 11: 3,4)
6. Zemun (Majnarić-Pandžić 1966, 6, t. 5: 2; 6)
9. Ruma-Velike Ledine (Bašte) (Todorović 1968, 149-150, t. 41: 4-5; Majnarić-Pandžić 1970, 41)
10. Subotiče (Todorović 1968, 150, t. 41: 7,8; *Ruma i okolina u doba Skordiska* [Ruma 1986] sl. na str. 3)
11. Sremska Mitrovica (Łuczkiwicz 2002, 36, Abb. 17)
12. Otok-Laze (Dizdar 2001, t. 1: 7)
13. Sotin-Zmajevac; gr. 3 (Božić 1981, t. 9: 3)
14. Ivankovo-Bedem-grad (Dizdar 2001, t. 1: 6)
18. Šmarje-Magdalenska gora; gr. V/42 (Hencken 1978, fig. 163: a)
19. Ljubljana: Kamin (Vuga 1980, 202, sl. 3: 1), Blatna Brezovica (Narodni muzej Slovenije; neobjavljeno), Lipavec (Narodni muzej Slovenije; neobjavljeno)
20. Gracarca (GLEIRSCHER 1993, 83, Abb. 34: 1-3)

#### Noži

1. Mala Vrbica-Ajmana; gr. 1 (Stalio 1986, fig. 40, 42)
2. Vajuga-Pesak; gr. 3/1983 (Popović 1991, sl. 4: 8; 3: 3)
3. Beograd-Rospri Čuprija (Todorović 1971, 126-127, t. 59: 4)
4. Beograd-Karaburma; gr. 14, 13, 18, 25 (Todorović 1972, t. 5: 1,3; 7: 5; 9: 1)
5. Zemun-Gardoš (Majnarić-Pandžić 1970, t. 46: 6)
7. Kupinovo (Majnarić-Pandžić 1970, t. 16: 8)
8. Novi Banovci (Majnarić-Pandžić 1970, t. 28: 5)
15. Dalj (Majnarić-Pandžić 1970, t. 24: 10)
16. Osijek-Donji grad (Spajić 1954, 15, t. 5: 35; Šimić, Filipović 1997, 16, sl. 9, 34, št. 44).
17. Slatina v Rožni dolini? (t. 2: 4)

BATAILLE, G. 2001, Les agrafes de ceinturon du sanctuaire de la Villeneuve-au-Châtelot (Aube). - *Arch. Korrb.* 31/3, 443-460.

BÖRZSÖNYI, A. 1911, Óskori emlékek a győri múzeumban. - *Arch. ért.* 31, 353-360.

BOŽIĆ, D. 1980, *Relativna kronologija mlajše železne dobe v jugoslovanskem Podonavju in poznolatenski astragalni pasovi vrste Beograd*. - Diplomatska naloga na Univerzi Edvarda Kardelja v Ljubljani, Ljubljana.

BOŽIĆ, D. 1981, Relativna kronologija mlajše železne dobe v jugoslovanskem Podonavju. - *Arh. vest.* 32, 315-347.

BOŽIĆ, D. 1987, Keltška kultura u Jugoslaviji. Zapadna grupa. - V: *Praist. jug. zem. 5. Željezno doba*, 855-897.

BOŽIĆ, D. 1999, Die Erforschung der Latènezeit in Slowenien seit Jahr 1964. - *Arh. vest.* 50, 189-213.

CHAPOTAT, G. 1970, *Vienne Gauloise. Le matériel de La Tène III trouvé sur la colline de Sainte-Blandine*. - Publications du Centre d'Études Romaines et Gallo-Romaines de la Faculté des Lettres et Sciences Humaines de Lyon 2, Lyon.

DE MARINIS, R. 1977, The La Tène Culture of the Cisalpine Gauls. - V: M. Guštin (ur.), *Keltske študije*, Pos. muz. Brež. 4, 23-50.

DIZDAR, M. 2001, Nalazišta latenske kulture na vinkovačkom području. - *Pril. Inst. arh. Zag.* 18, 103-134.

FISCHER, F. 1967, Alte und neue Funde der Latène-Periode aus Württemberg. - *Fundber. Schwaben* 18/1, 61-106.

FOGOLARI, G. in G. GAMBACURTA 2001, *Materiali veneti preromani e romani del santuario di Lagole di Calalzo al Museo di Pieve di Cadore*. - Coll. e Mus. Arch. d. Ven. 44, Roma.

GABROVEC, S. 1966, Latensko obdobje na Gorenjskem. - *Arh. vest.* 17, 243-270.

GARAŠANIN, D. 1960, Eine verzierte Lanzenspitze der Latènezeit aus Beograd. - *Germania* 38, 428-431.

GEBHARD, R. 1991, *Die Fibeln aus dem Oppidum von Manching*. - Ausgr. in Manch. 14.

GLEIRSCHER, P. 1993, Urzeitliche Siedlungsreste im Bereich der Gracarca am Klopeiner See in Unterkärnten. - *Carinthia I* 183, 33-93.

GUŠTIN, M. 1977, Relativna kronologija grobov "Mokronoške skupine". - V: M. Guštin (ur.), *Keltske študije*, Pos. muz. Brež. 4, 67-104.

GUŠTIN, M. 1981, Keltische Gräber aus Dobova, Slowenien. - *Arch. Korrb.* 11, 223-229.

GUŠTIN, M. 1984a, Die Kelten in Jugoslawien. - *Jb. Röm. Germ. Zentmus.* 31, 305-363.

GUŠTIN, M. 1984b, Prazgodovinski grobovi z vozovi na ozemlju Jugoslavije. - V: *Keltski voz*, Pos. muz. Brež. 6, 111-130.

GUŠTIN, M. 1991, *Posočje. Posočje in der jüngeren Eisenzeit*. - Kat. in monogr. 27.

GUŠTIN, M. 2003, Prilog poznavanju ženske nošnje kod Tauriska. - *Opusc. arch.* 27, 321-330.

HENCKEN, H. 1978, *The Iron Age Cemetery of Magdalenska gora in Slovenia*. - Bull. Amer. Sch. of Prehist. Res. 32.

HUNYADY, I. v. 1942-1944, *Die Kelten im Karpatenbecken*. - Diss. Pann. II/18, Budapest.

JACOBI, G. 1974, *Werkzeug und Gerät aus dem Oppidum von Manching*. - Ausgr. in Manch. 5, Wiesbaden.

JOVANOVIĆ, B. 1984, Les sépultures de la nécropole celtique de Pezaine près de Kostolac (Serbie du nord). - *Ét. Celt.* 21, 63-93.

JOVANOVIĆ, M. 1991, Keltški grob iz Bačkog Gradišta. - *Rad vojv. muz.* 33, 29-40.

KELTOI, *Kelti in njihovi sodobniki na ozemlju Jugoslavije*. - Ljubljana 1983.

KNEŽEVIĆ-JOVANOVIĆ, M. 2003, Keltško oružje iz razorenih ratniških grobova sa teritorije Srema i Bačke. - *Opusc. arch.* 27, 287-309.

KRÄMER, W. 1985, *Die Grabfunde von Manching und die latènezeitlichen Flachgräber in Südbayern*. - Ausgr. in Manch. 9.

- KRIŽ, B. 1999, Epingle en fer à tête de cheval de Novo mesto (Slovénie). - *Instrumentum* 9, 16.
- KRIŽ, B. 2001, *Kelti v Novem mestu. Katalog razstave*. - Novo mesto.
- LEJARS, Th. 1994, *Gournay III. Les fourreaux d'épée. Le sanctuaire de Gournay-sur-Aronde et l'armement des Celtes de La Tène moyenne*. - Paris.
- LEJARS, Th. 1996, L'armement des Celtes en Gaule du nord à la fin de l'époque gauloise. - *Rev. arch. Pic.* 3/4, 79-103.
- ŁUCZKIEWICZ, P. 2002, Die verzierten Lanzenspitzen: Spuren germanischer Wanderungen während der jüngeren vorrömischen Eisenzeit? - V: *Bewaffnung der Germanen und ihrer Nachbarn in den letzten Jahrhunderten vor Christi Geburt*, 15-40, Lublin.
- MAJNARIĆ-PANDŽIĆ, N. 1966, Nalaz keltskog oružja iz Zemuna. - *Opusc. arch.* 6, 5-14.
- MAJNARIĆ-PANDŽIĆ, N. 1970, *Keltsko-latenska kultura u Slavoniji i Srijemu*. - Acta Mus. Cibal. 2.
- MAJNARIĆ-PANDŽIĆ, N. 1972-1973, Kasnolatenski keltski grobovi iz Sotina. - *Vjes. Arh. muz. Zag.* 6-7, 55-80.
- MARÁZ, B. 1982, La Tène-kori leletek Jugoszláviából és Romániából magyarországi múzeumokban. - *Jan. Pann. Múz. Évk.* 27, 107-116.
- MILOŠEVIĆ, A. 1986, Dvije ostave željeznog orudja s područja Delmata. - *Arh. vest.* 37, 97-128.
- MÜLLER, F. 1990, *Der Massenfund von der Tiefenau bei Bern. Zur Deutung latènezeitlicher Sammelfunde mit Waffen*. - Antiqua 20, Basel.
- NOTHDURFTER, J. 1979, *Die Eisenfunde von Sanzeno im Nonsberg*. - Röm. Germ. Forsch. 38.
- PAULI, L. 1978, *Der Dürrnberg bei Hallein III*. - Münch. Beitr. z. Vor- u. Frühgesch. 18.
- PENNINGER, E. 1972, *Der Dürrnberg bei Hallein I*. - Münch. Beitr. z. Vor- u. Frühgesch. 16.
- PERRIN, F. 1990, *Un dépôt d'objets gaulois à Larina*. - Doc. d'arch. en Rhône-Alpes 4, Lyon.
- PÍČ, J. L. 1903, *Čechy na úsvitě dějin 2. Hradiště u Stradonic jako historické Marobudum*. - Praha.
- PIRKMAJER, D. 1986, Slatina pri Šmartnem v Rožni dolini. - *Var. spom.* 28, 254-255.
- PIRKMAJER, D. 1988, Slatina pri Šmartnem v Rožni dolini. - *Var. spom.* 30, 227.
- PIRKMAJER, D. 1991, *Kelti na Celjskem*. Arheološka razstava Pokrajinskega muzeja Celje. - Celje.
- POPOVIĆ, P. 1991, Mlade gvozdeno doba Đerdapa. - *Starinar* 40-41, 1989-1990, 165-176.
- PUŠ, I. 1976, Latenski pasni sponi z dvorišča SAZU v Ljubljani. - *Arh. vest.* 27, 120-123.
- RAPIN, A. 1988, Boucliers et lances. - V: *Gournay II*, Revue Archéologique de Picardie, 7-142, Paris.
- REINECKE, P. 1907, Die Originalaltertümer in den Sammlungen des Römisch-Germanischen Centralmuseums in Mainz. Vermehrung im Berichtsjahre 1905/1906. - *Mainzer Ztschr.* 2, 40-53.
- RIGHI, G. 2001, I rinvenimenti lateniani di Amaro e di Monte Sorantri a Raveo. - V: S. Vitri, F. Oriolo (ur.), *I Celti in Carnia e nell'arco alpino centro orientale. Atti della Giornata di studi Tolmezzo 30 aprile 1999*, 113-148, Trieste.
- RUSTOIU, A. 2002, *Războinici și artizani de prestigiu în Dacia preromană*. - Cluj-Napoca.
- SALZANI, L. 1996, *La necropoli gallica e romana di S. Maria di Zevio (Verona)*. - Doc. di arch. 9, Mantova.
- SALZANI, L. 1998, *La necropoli gallica di Casalndri a Isola Rizza (Verona)*. - Doc. di arch. 14, Mantova.
- SPAJIĆ, E. 1954, Nalazište mladeg željeznog doba s terena Osijeka. - *Osij. zbor.* 4, 7-18.
- STALIO, B. 1986, Le site préhistorique Ajmana à Mala Vrbića. - *Derd. sv.* 3, 27-50.
- ŠIMIĆ, J. in S. FILIPOVIĆ 1997, *Kelti i Rimljani na području Osijeka*. - Osijek.
- TEODOR, S. 1980, Das Werkzeugedepot von Lozna (Kr. Botoșani). - *Dacia* 24, 133-150.
- TERŽAN, B. 1973, Valična vas. - *Arh. vest.* 24, 660-729.
- TERŽAN, B. 1990, *Starejša železna doba na Slovenskem Štajerskem*. - Kat. in monogr. 25.
- TODOROVIĆ, J. 1956, Praistoriska nekropola na Rospi Ćupriji kod Beograda. - *God. Muz. grada Beog.* 3, 27-62.
- TODOROVIĆ, J. 1958, Dosadašnji nalazi keltskog oružja na teritoriji Srbije. - *Ves. Voj. muz.* 5/2, 24-34.
- TODOROVIĆ, J. 1966, Praistorijske nekropole u Ritopeku. - *Starinar* 17, 153-162.
- TODOROVIĆ, J. 1967, Praistorijske nekropole na Rospi Ćupriji u Beogradu. - *Starinar* 18, 193-200.
- TODOROVIĆ, J. 1968, *Kelti u jugoistočnoj Evropi*. - Beograd.
- TODOROVIĆ, J. 1971, *Katalog praistorijskih metalnih predmeta*. - Beograd.
- TODOROVIĆ, J. 1972, *Praistorijska Karaburma I*. - Beograd.
- TODOROVIĆ, J. 1973-1974, Dvojni ratnički grob Skordiska iz Ritopeka. - *Starinar* 24-25, 79-83.
- TODOROVIĆ, J. 1974, *Skordisci. Istorija i kultura*. - Novi Sad, Beograd.
- VITALI, D. 1989, Una tomba con armamento lateniano da Gomoria presso Montagnana (Padova). - *Arch. Ven.* 12, 7-25.
- VOUGA, P. 1923, *La Tène*. - Leipzig.
- VUGA, D. 1980, Železnodobna najdišča v kotlini Ljubljanskega barja. - *Situla* 20/21, 199-210.
- WYSS, R., T. REY in F. MÜLLER 2002, *Gewässerfunde aus Port und Umgebung. Katalog der latène- und römerzeitlichen Funde aus der Zihl*. - Schr. d. Bern. Hist. Mus. 4, Bern.

## A Celtic warrior grave from Slatina v Rožni dolini near Celje?

### Translation

#### INTRODUCTION

The Celtic cemetery at Slatina v Rožni dolini near Celje was discovered in 1972 while digging a pit for a staircase next to the entrance to the house at Slatina 4 E. The home-owner Govejšek was said to have then discovered a large quantity of metal grave goods in a single grave pit, 100 x 80 cm, full of

cremated remains, which were presented in the catalogue of the exhibition "The Celts in Celje" as the contents of two graves (1 a and 1 b),<sup>1</sup> while it is more likely that these were objects placed in the graves of two male burials and one female burial. A sword, from a grave discovered at this time, was sold to a friend by his son, and only in 1983 was it acquired by the museum, while other finds, including objects that were discovered that

<sup>1</sup> Pirkmajer 1991, 21.

same summer while planting fruit trees, as well as a sword in its scabbard and a belt ring, found in the following year while leveling the land of the neighbor on the left - Leskovšek (Slatina 4 D), were donated by the owner to the museum.<sup>2</sup>

The archaeological excavations of the Regional Museum in Celje directed by Darja Pirkmajer between 1985 and 1989 saw a further 29 flat cremation graves come to light. The cemetery lies on a gently sloping crest some 500 m east of the early Hallstatt hillfort of Slačjek and has not yet been excavated entirely. Most of the graves were excavated on the Govejšek lots, and the cemetery also spread to a lesser extent into the Leskovšek garden. As test trenches on the southern slope and the lots of the eastern neighbor did not uncover new graves, Pirkmajer considered that the cemetery extended towards the road, i.e. the highest part of the crest and on its northern slope, with two narrow terraces in a wood. Two graves proved the correctness of her hypothesis, as they were excavated on the far side of the road, and in the nineties an iron slashing knife was discovered by chance in this area.<sup>3</sup>

According to the documented inventories of the graves, burial took place almost exclusively in the 2<sup>nd</sup> century BC or in the later phase of the middle La Tène period (LT C2). The grave goods in the male burials, which in general correspond to forms of the eastern Celtic material culture, include swords with scabbards, decorated with a motif of triskelet and/or in the *chagrinage* technique, a corresponding belt set with rings and hook, spear-heads, a band shaped shield bosses, iron fibulae and personal items, while the female graves primarily contained various iron or bronze fibulae and belt chains of bent links.

In 2003, at the exhibition of *Zvone Čebul* under the auspices of the Velenje Museum in the Municipal Gallery Šoštanj, the iron objects under discussion were placed on view, which the collector claimed came from the surroundings of Celje and had been found more than 20 years before. Upon checking with the owner of the land at Slatina, it seems that the finds were very probably discovered during construction of the previously mentioned staircase, as in 1985 the owner told the excavation director about an iron tool with three prongs, which he could no longer find.

Factors in favor of the hypothesis that the majority of objects came from a previously unknown warrior grave at Slatina are the typological accordance with the other finds from the cemetery, the identical patina and state of preservation, and also the period of acquisition. On the other hand, it is not possible to overlook the slashing knife with a rivet, and particularly the decorated knife with curved blade and forked implement, which have no analogies in the region of the Mokronog group and can be connected to the material culture of the area settled by the Scordisci. The chronological homogeneity of the decorated knife and forked implement could indicate that this was a collection of finds from two or more grave units, which the discoverer did not recognize because of the dense placement of graves at the site of the construction pit. We also cannot omit the extreme, but in our opinion less likely, possibility that part of the objects came from the Danubian Region and arrived in the collection through the antiquities trade.<sup>4</sup>

### (HYPOTHESIZED) GRAVE INVENTORY

#### 1. A sword with a scabbard (*Pl. 1: 1a,b*).

The sword of middle La Tène type was preserved in its entire length, with a short point and a lenticular blade section. Very narrow and shallow grooves extend along the center of the blade. The transition to the hilt tang was saddle-shaped, which indicates that the sword had a high campanulate guard, which was not preserved. The tang of rectangular section narrowed at the top.

L. sword 94,3 cm; l. tang 15,2 cm; w. tang 1,5 cm; l. blade 79,1 cm; greatest w. blade 4,5 cm; wt. 584 g.

Eight fragments from the scabbard made of iron sheet exist, where the front plate overlapped the rear. The front upper reinforce is missing, and from the lower part of the scabbard only one of the round plates of the chape-bridge was preserved. The suspension loop had a narrow rectangular form and a trapezoid section. Heart-shaped loop-plates with openings for rivets spread out from this, and from the terminal on the lower plate, two short protrusions extend. The upper plate extend above a thickening into a flat Y-type reinforce with two curved arms.

Greatest w. 4,8 cm; l. suspension loop with plates 7,7 cm; wt. 84, 51, 41, 39, 39, 31, 31, 26, 3 g.

#### 2. Belt set for hanging a sword

a. A solid iron ring of circular section. Dia. 6,6 cm; th. 1,0 cm; wt. 98 g (*Pl. 1: 6*).

b. A smaller solid iron ring of circular section. Dia. 5,1 cm; th. 0,8 cm; wt. 46 g (*Pl. 1: 5*).

c. An iron circular belt ring with a circular section and a flat pear-shaped protrusion, which ends in a riveted mushroom-shaped hook. L. 5,2 cm; dia. 3,9 cm; wt. 19 g (*Pl. 1: 4*).

d. An iron ring of circular section with a symmetrical decoration of four hemispherical protrusions, which are on both sides accompanied by flattened sections with a deepened decoration of a highly stylized figure with a large head, horizontally extended arms and a pointed torso. On the opposite side of the ring, between small spherical hollows are two flattened circular broadenings with a concave surface. Dia. 6,5 cm; wt. 20 g (*Pl. 1: 7*).

#### 3. Shield boss (*Pl. 2: 1*).

A partly damaged umbo of iron sheet with a half-barrel shaped dome of flattened hemispherical section, and pseudo-trapezoidal wings. Only one of two nails with a disc-shaped head and a shaft of square section was preserved.

Pres. w. of the entire boss 32,7 cm; ht. dome 13,5 cm; greatest w. dome 13,3 cm; wt. 238 g.

#### 4. Spearhead (*Pl. 1: 3*).

An almost undamaged spearhead with a narrow bi-convex blade with a flattened hemispherical midrib and a long socket of circular section. The solid transition from the socket to the blade begins with a pronounced rib. Circular nail holes for attaching the handle were preserved at the beginning of the socket. Before placement in the grave, the leaf was deliberately bent at the beginning of the upper third.

L. 42,1 cm; w. blade 3,5 cm; l. socket 15,4 cm; wt. 233 g.

<sup>2</sup> Ead. 1986; 1988.

<sup>3</sup> Documentation about the find is kept in the Regional Museum of Celje. We would like to thank the museum director Darja Pirkmajer, who allowed us access to data about the excavations at Slatina and aided in making contact with the discoverer of the cemetery.

<sup>4</sup> For help and advice we would like to thank Prof. Dr. Mitja Guštin, and for a careful reading and numerous corrections and suggestions Dr. Dragan Božič. Among other things, he brought to our attention the distribution of knives with rivets on the blade, several articles (e.g. Bataille 2001 and Łuczkiwicz 2002), the iron bracelet from Kostolac in Serbia, and the forked implements from Vienne in France and Lozna in Romania.

5. Spear-head (*Pl. 1: 2*).

An undamaged spearhead with a narrow bi-convex leaf with a prominent midrib of triangular section, with its widest part lying in the lower third. The leaf has a sharp transition to a very short socket of circular section. Circular nail holes were preserved at the beginning of the socket.

L. 52,0 cm; w. blade 4,4 cm; l. socket 9,1 cm; wt. 260 g.

6. Slashing knife (*Pl. 2: 2*).

A slightly damaged slashing knife with a massive, down-curved handle of rectangular section. The blade has a slightly curved back and a straight cutting edge. At the beginning of the cutting edge, which transits into the handle at an obtuse angle, a hemispherical rivet had been placed on the left side of the blade. The handle begins with a barrel-shaped thickening, accompanied on both sides with narrow ribs, and finishes with a mushroom-shaped or bi-conical knob.

Pres. l. 34 cm; l. handle 8,5 cm; w. blade 6,2 cm; dia. rivet 1,2 cm; wt. 349 g.

7. Curved knife (*Pl. 2: 4*).

A damaged small iron knife with a narrow blade. It has a curved back, straight blade, and a somewhat downward pointing tip. The short tang of triangular form had preserved rivet. Both sides of the blade were decorated in the upper part with a shallow channel of semicircular section, accompanied on both sides by a line of punched points.

Pres. l. 17,2 cm; l. tang 3,3 cm; w. blade 2,4 cm; wt. 39 g.

8. Razor (*Pl. 2: 5*).

A slightly damaged iron razor with a blade that had a straight back and a somewhat convex cutting edge. The short, down-curved solid handle had a terminal in the shape of a horse head with open mouth, while the upper edge of the handle was decorated with a stylized mane.

Pres. l. 13,6 cm; l. handle 3,5 cm; w. blade 3,7 cm; wt. 26 g.

9. Scissors (*Pl. 2: 6*).

Almost undamaged iron scissors with a U-shaped band spring, somewhat broadened at the end. Each blade had a convex back and a straight cutting edge leading to the rounded point.

L. scissors 19,2 cm; l. blades 10,0 cm; great. w. blades 2,1 cm; wt. 58 g.

10. Bracelet (*Pl. 2: 10*).

An iron bracelet of circular section with slightly thickened, overlapping ends.

Dia. 8,7 cm; th. 0,4 - 0,6 cm; wt. 44 g.

11. Fibula (*Pl. 2: 8*).

A partly damaged iron fibula with an eight coiled spring and a massive trapezoidal bow, which widens towards the head. The fibula has a rectangular back-bent foot with a spherical knob, attached to the highest part of the bow with a band-shaped fastening.

L. 6,6 cm; l. bow 6,0 cm; l. foot 5,2 cm; l. pin catch 2,5 cm; recon. w. spring 3,4 cm; wt. 12 g.

12. Fibula (*Pl. 2: 9*).

An iron fibula almost identical to the one above.

L. 6,6 cm; l. bow 6,0 cm; l. foot 5,3 cm; l. pin catch 2,5 cm; recon. w. spring 3,0 cm; wt. 12 g.

13. Forked implement (*Pl. 2: 7*).

A partly damaged iron fork with three slightly hooked conical prongs of square section and a tubular mount for fastening of a wooden handle. The outside prongs were forged onto the central one. Half of the two-part tubular socket was preserved. From the saddle-shaped curves of the outside prongs emerge flexible band-shaped split pins that originally extended through the socket.

L. 15,4 cm; w. 7,3 cm; wt. 87 g.

14. Ring with a pin (*Pl. 2: 3*).

An iron ring of circular section, with a narrow pin of square-sectioned wire hanging from it. The damaged further section ended in a broadened part.

Dia. ring 2,6 cm; th. 0,4 cm; l. pin 4,3 cm; wt. 8 g.

## ANALYSIS OF THE OBJECTS

## A sword with a scabbard

The sword (*Pl. 1: 1a*) can be classified on the basis of its form and dimensions, the presence of shallow grooves along the center of the blade, and the form of its transition to the tang, to the later part of the middle La Tène period, while characteristics of this period are also exhibited by the fragmentary remains of the accompanying scabbard (*Pl. 1: 1b*). Similar heart-shaped plates of the suspension loop and the divided horizontal arms, which represent a reverse reinforce, can be found on a series of scabbards of the fairly heterogeneous group 6 according to Lejars, which includes examples with a short chape and is dated to the LT C2 horizon on the basis of grave units.<sup>5</sup> Very similar suspension loops with heart-shaped plates, although lacking the thickening above the upper plate, can be found, for example, on the undecorated scabbard from the double burial with a wagon from Odžaci near Sombor in the Bačka region,<sup>6</sup> a scabbard with a motif of a triskeles from one of two graves from Bačko Gradište,<sup>7</sup> and the scabbard of a sword with a boar-shaped stamp from a destroyed graves at Kupinovo near the mouth of the Sava River.<sup>8</sup> Plates and thickening similar in form also appear on the scabbard of a 92 cm long sword from grave 86 at the cemetery of S. Maria di Zevio near Verona, dated to the LT C2 phase.<sup>9</sup>

## Belt set for suspension of a sword

Preserved elements from a belt for suspension of a sword included three rings (*Pl. 1: 5-7*), and a circular buckle with a small pear-shaped protrusion (*Pl. 1: 4*), which is similar in form to examples of type 4C3b according to Bataille.<sup>10</sup> Buckles with pear-shaped and shield-shaped protrusions, known both in bronze and iron, represent the leading form in warrior graves from the later part of the middle La Tène.<sup>11</sup> This was a derivation

<sup>5</sup> Lejars 1994, 24, 36-38, 52-53, 160.

<sup>6</sup> Guštin 1984b, Pl. 7: 1.

<sup>7</sup> Jovanović 1991, 29, Pl. 1: 1.

<sup>8</sup> Majnarić-Pandžić 1970, 85, Pl. 16: 7; 18: 1; a related suspension loop can also be found on the scabbard of a sword from Zvečka near Obrenovac (Todorović 1974, fig. 69).

<sup>9</sup> Salzani 1996, 59-60, Pl. 32: C.

<sup>10</sup> Bataille 2001, 454, fig. 7: 61, 62.

<sup>11</sup> In addition to the listed finds from the eastern Alpine region, we can also note buckles from grave 6 at Darmsheim (Fischer 1967, Abb. 3: 11) and from grave 12 at München-Obermenzing (Krämer 1985, Taf. 60: 11).

of circular buckles with a narrow protrusion, such as can also be found in late La Tène contexts.<sup>12</sup>

Bronze buckles with pear-shaped protrusions are known among individual finds from the courtyard of the Slovenian Academy of Sciences and Arts in Ljubljana,<sup>13</sup> from Formin in Styria,<sup>14</sup> and from one of the graves from Amaro in Carnia,<sup>15</sup> while iron versions of type 4C2 are represented in grave 23 at Dobova,<sup>16</sup> grave 12 from Zvonimirovo,<sup>17</sup> and among the finds without a grave context from Slatina.<sup>18</sup> Grave 13 from Slatina also contained an iron variant with a shield-shaped protrusion and a decorated surface of the hook (type 4C3b),<sup>19</sup> while similar examples can also be found in the Tiefenau hoard from the Enge peninsula near Bern,<sup>20</sup> and from the vicinity of the wooden platforms in the shallows of La Tène on the banks of Lake Neuchâtel,<sup>21</sup> from which various versions of middle La Tène buckles are otherwise known. The chronological placement of the circular buckles with pear-shaped and shield-shaped protrusions in the later part of the middle La Tène period is further confirmed by their occurrence in the famous Belgic sanctuary Gournay-sur-Aronde.<sup>22</sup>

The belt set for the suspension of a sword is also considered to include an finely worked ring with decorative hollows for enamel (*Pl. 1: 7*), as related finds primarily come from warrior graves with several undecorated rings and buckles with protrusions, while the greatest amount was discovered at La Tène, where weapons and military equipment are quite predominant among the finds.

The best comparisons for the rings can be found in the east, in unpreserved grave units from Sremski Karlovci,<sup>23</sup> and Surčin.<sup>24</sup> Both rings have an almost identically formed upper decoration of four hemispherical protrusions, accompanied by flattened broadenings with deepened stylized images. In contrast to the examples from the collection, the lower broadening is accompanied merely by narrow profiled ribs. Also from Sremski Karlovci is a stylistically better worked ring with a symmetrical decoration of pairs of flattened figure eights, separated by the crescent-shaped part of the ring, and with a broadening in the center in the shape of a fish bladder.<sup>25</sup>

Simply decorated rings further appear in warrior grave 10 and among the finds without known grave units from Slatina.<sup>26</sup> The ring from the grave, which belongs to the LT C2

phase, had only one-half decorated with relief, which is bordered by globular protrusions on both sides of two circular broadenings with a concave surface.<sup>27</sup> A circlet with deepened broadenings and two flattened hemispherical protrusions was also found in the triple burial of a warrior, a woman and a child at the cemetery of Zvonimirovo in the Croatian Podravina (grave 12),<sup>28</sup> which was dated to the LT C2 phase.<sup>29</sup>

All of the listed rings are profiled and decorated only on the front side, while the rear side was flat and lacked ornamentation. The diameter of most measured between 5.1 and 7.6 cm. Their actual use as part of a belt set for a suspension of a sword is indicated by the find from the well-known grave 12 at München-Obermenzing.<sup>30</sup> In addition to a sword with a high bell-shaped guard in a scabbard with heart-shaped plates of the suspension-loop, spearheads with a long socket and bi-convex leaf, shield bosses with pseudo-trapezoidal wings, two fibulae, one of which strongly resembles the examples from Slatina, hollow armrings of iron sheet, and pottery vessels, the burial also contained two large and two small rings of the belt set and an circular buckle with a pear-shaped protrusion and a very similar, although somewhat smaller, profiled ring (dia. 3.8 cm). On one half, this had less carefully worked ribs or protrusions, and in the opposite section a profiled narrowing, which most probably represented the catch-groove for the hook of the belt buckle. This detail is also visible on one of 17 rings of this type from La Tène, among which six are very similar to ours.<sup>31</sup>

#### Shield boss

The large boss with pseudo-trapezoidal wings and nails with a disc-shaped head (*Pl. 2: 1*) can be classified on the basis of its dimensions and the strong roundness of the half-barrel shaped dome to the group of shield bosses that appear primarily in the later part of the middle La Tène period, and periodically up to the last decades of the 2<sup>nd</sup> century BC. The closest analogy can be found in grave 251 Kapitelska njiva in Novo Mesto, which contained a more than 35 cm wide umbo with a somewhat lower dome (ht. 12.5 cm) and nails with a hemispherical head, found together with a sword of middle La Tène type in a scabbard with a double S shaped reinforcement (LT C2/D1).<sup>32</sup> A

<sup>12</sup> E.g. the buckle from grave 10 at Slatina (type 4A2; Pirkmajer 1991, Pl. 9: 59). The example from grave 1b at Roje near Moravče comes from a later period (Knez 1977, Pl. 1: 4). A buckle without a grave unit from the same cemetery has a broadened beginning of the straight extrusion (*Ibid.*, Pl. 11: 12).

<sup>13</sup> Puš 1976, fig. 2.

<sup>14</sup> Pahič 1966, Pl. 15: 11.

<sup>15</sup> Righi 2001, 114, fig. 6: 8.

<sup>16</sup> Keltoi, 79, fig. 22; Božič 1987, Pl. 87: 7-10.

<sup>17</sup> Majnarić-Pandžić 2001, Pl. 10: 5.

<sup>18</sup> Pirkmajer 1991, Pl. 6: 36.

<sup>19</sup> *Ibid.*, Pl. 13: 88.

<sup>20</sup> Müller 1990, 36, Pl. 2: 22.

<sup>21</sup> Vouga 1923, Pl. 8: 27.

<sup>22</sup> Lejars 1996, fig. 8.

<sup>23</sup> Todorović 1974, fig. 52; Majnarić-Pandžić 1970, 46, Pl. 40: 2; One other flattened ring comes from the same site, where the protrusions and broadenings are merely indicated with an incision and shallow lines (*Ibid.*, Pl. 39: 10).

<sup>24</sup> Majnarić-Pandžić 1970, Pl. 41: 4.

<sup>25</sup> *Ibid.*, Pl. 40: 3.

<sup>26</sup> Pirkmajer 1991, Pl. 6: 34.

<sup>27</sup> *Ibid.*, Pl. 10: 60.

<sup>28</sup> Majnarić-Pandžić 2001, Pl. 10: 4.

<sup>29</sup> Guštin 2003, 322.

<sup>30</sup> Krämer 1985, 122, Pl. 60: 10.

<sup>31</sup> Vouga 1923, Pl. 8: 18,12,20,23; 50: 11,12.

<sup>32</sup> Križ 2001, 128, fig. 328.



similar boss comes from a grave at Introbio near Lake Como,<sup>33</sup> which De Marinis dated to the end of the LT C phase (estimated w. ca. 30 cm; ht. ca. 13 cm).<sup>34</sup> Both bosses, in contrast to the one from Slatina, have gently curved outer edges of the wings. More rounded sides of the dome, reminiscent of the Skorba and Mokronog-Arquà Petrarca boss types, are exhibited by 14.6 cm tall umbo from grave 442 at Kapiteljska njiva, with a sword with a high campanulate guard in a scabbard of middle La Tène type (LT C2).<sup>35</sup>

The umbo from Slatina is typologically close to the over 30 cm long and between 12 and 14 cm tall examples with right-angled wings of type VI according to Rapin,<sup>36</sup> which appear in variants with high<sup>37</sup> and low<sup>38</sup> half-barrel shaped domes. Rapin dated them to the LT C2 phase,<sup>39</sup> while according to Vitali they also appear up to the transition to the late La Tène.<sup>40</sup> Such bosses are also similar to several examples from the group with trapezoidal wings and somewhat lower domes of the VA type according to Rapin,<sup>41</sup> which is primarily characteristic for the later part of the middle La Tène period.

The LT C2 horizon also saw the appearance of taller bosses (ht. 16-17 cm) with narrow domes and slightly fan-shaped wings, such as are known from grave 10 at Slatina,<sup>42</sup> grave 23 at Dobova,<sup>43</sup> and grave 1 at Mokronog (LT C2/D1),<sup>44</sup> and bosses of the Skorba type with "butterfly" shaped wings.<sup>45</sup>

### Spearheads

Spearheads with a biconvex blade and a triangular rib and a socket (*Pl. 1: 3*) that extends almost to the half-point of the whole spearhead belong among the leading forms of the later part of the middle La Tène period. In grave inventories, they appear primarily

together with shield bosses with rectangular or trapezoidal wings. A series of similar spearheads (type IIc according to Rapin) comes, for example, from the cult sites of Gournay-sur-Aronde<sup>46</sup> and La Tène,<sup>47</sup> and spearheads of identical form were placed in grave 10 at Slatina,<sup>48</sup> and in previously mentioned burials at Odžaci,<sup>49</sup> Darmsheim,<sup>50</sup> and München-Obermenzing.<sup>51</sup>

The second spearhead is particularly interesting, with a length of 52 cm, for which no direct analogies are known to the authors (*Pl. 1: 2*). It has a narrow, convex blade with the center of gravity in the lower third, and a sharp transition to the short socket that broadens towards the opening. Although its size could also indicate a later date, as particularly long examples of such weapons on a spear are characteristic primarily for the 1<sup>st</sup> century BC,<sup>52</sup> over 50 cm long spearheads with a classic blade and a short, broadened socket appear as early as the later part of the middle La Tène.<sup>53</sup> A spearhead with a somewhat broader blade and an identical center of gravity (l. 45.2 cm; w. blade 6 cm) was found in a grave at Gomoria, which Vitali dated to the last decades of the 2<sup>nd</sup> century BC.<sup>54</sup>

A similar center of gravity is also characteristic for group of long spearheads with a short socket and convex blade, which narrow in the upper third and thus acquire a bayonet form. Such spearheads, often decorated, are characteristic for the late La Tène period and appear almost exclusively in the Germanic and western Celtic regions.<sup>55</sup>

### Slashing knife

A massive knives with a wedge-shaped blade section and a bent solid handle (*Pl. 2: 2*) represent an almost indispensable

<sup>33</sup> De Marinis 1977, 37, Pl. 10: 5.

<sup>34</sup> An umbo of similar form and dimensions as the Slatina example was found at Valična vas (ca. 30.3 cm wide and 12 cm tall) Teržan 1973, 675, Pl. 23: 1).

<sup>35</sup> Križ 2001, 121, fig. 288; cf. further the dome of the umbo with rectangular wings from grave 203 at Kapiteljska njiva with a sword in a sheath of middle La Tène type - LT C2 (Križ 2001, 100, fig. 155).

<sup>36</sup> Rapin 1988, 45-46, 72-73, 81, fig. 39.

<sup>37</sup> E.g. similar bosses from grave 162 at Kapiteljska njiva with a sword in a scabbard of middle La Tène type - LT C2 (Križ 2001, 96, fig. 137, 138), the example from grave 523 (LT C2 (?)) - Križ 2001, 131, fig. 342) and grave 27 at the cemetery of Casalandri (w. 41.6 cm; ht. 14 cm; LT C2; Salzani 1998, 24, Pl. 17: 8), and a narrower umbo with more rounded sides of the dome from grave 131 at the cemetery of S. Maria di Zevio (w. 29.6 cm; ht. 9.8 cm; Salzani 1996, Pl. 61: 2). The latter was discovered together with a sword in a scabbard, which shows characteristics of the LT D phase, such as a double S reinforcement and two pairs of extrusions on the chape. A similar sheath and a somewhat larger umbo (w. 42 cm; ht. 14.4 cm) come from a grave at Gomoria (Vitali 1989, fig. 5; 6: 19).

<sup>38</sup> E.g. Slatina (gr. 19) with a sword in a scabbard of middle La Tène type - LT C2 (Pirkmajer 1991, Pl. 16: 110), Kapiteljska njiva (gr. 227 and 522; found with a sword in a scabbard of middle La Tène type - LT C2 (Križ 2001, fig. 169, 338).

<sup>39</sup> Rapin 1988, 72-73, 78.

<sup>40</sup> Vitali 1989, 20.

<sup>41</sup> Rapin 1988, 72, 78, 81.

<sup>42</sup> Pirkmajer 1991, Pl. 11: 70.

<sup>43</sup> Keltoi, 79, fig. 22.

<sup>44</sup> Guštin 1977, Pl. 9: 3.

<sup>45</sup> Vrsta Rapin VII B (Rapin 1988, 82, fig. 33: A).

<sup>46</sup> Rapin 1988, 119-120, 133, fig. 58 bis; 66.

<sup>47</sup> Vouga 1923, Pl. 10.

<sup>48</sup> Pirkmajer 1991, Pl. 10: 68.

<sup>49</sup> Guštin 1984b, Pl. 6: 6.

<sup>50</sup> Fischer 1967, Abb. 3: 4.

<sup>51</sup> Krämer 1985, Taf. 60: 4.

<sup>52</sup> Božič 1981, 319, form 31, Pl. 3: 31a, 31b.

<sup>53</sup> E.g. the 59.3 cm long spearhead from gr. 532 at Kapiteljska njiva (Križ 2001, 133, fig. 354).

<sup>54</sup> Vitali 1989, 12-13, 21, fig. 6: 17.

<sup>55</sup> The finds from this group include a 43.6 cm long spearhead from the Ljubljana River near Bevke with a shallowly etched polygonal pattern and a slightly faceted socket (Vuga 1980, 202, sl. 3: 1), and several similar, partly decorated examples from the Zihl/Thielle River near Port (Wyss, Rey, Müller 2002, 60, Taf. 41: 83,85,88,89,98; 42: 83,85,88,89,98; 47: 83,85).

part of the inventory of eastern Celtic warrior graves. The main element for their general typological-chronological classification is the morphology of the handle terminal: in the middle La Tène, handles are commonly equipped with biconical or mushroom-shaped end buttons, as well as with a ring. The knife from the collection has a barrel-shaped thickening at the transition from the blade to the handle, which is usual for that period, while a special feature represent the hemispherical rivet at the beginning of the blade.

The fact stands out that slashing knives with rivets are practically unknown in the area of the Mokronog group, while on the contrary they appear in relatively great numbers in the Serbian part of Danube basin (*list 1 / map 1*), although the usual examples with a thickening at the beginning and a button or circlet at the end of the handle are represented throughout the entire eastern Celtic region.<sup>56</sup> A variant of knives with a button on the end of the handle and a rivet<sup>57</sup> is represented in the east by a knife where a barrel-shaped thickening on the handle is replaced by a cubic button,<sup>58</sup> while rivets appear primarily on the blades of knives where the handle ends in a ring.<sup>59</sup> The construction of the rivets at the beginning of the blade, which probably prevented slipping, is often not evident because of insufficient or incomplete publication. In contrast to the single-sided rivets on the example from the hypothesized grave, it seems that the majority of the other knives from the Danube basin have flattened hemispherical platelets on both sides, attached with a single rivet.

Towards the west, where grave finds of knives are almost unknown prior to the LT D phase, nearly identical examples with a broad blade and a short bent handle with two buttons are known from Dürrenberg (*fig. 1: 1*). It is interesting that the version with a button made from two riveted platelets of a low hemispherical section at the beginning of the blade appears there even in the early La Tène,<sup>60</sup> while in the east to that period corresponds only one example from grave G-1-3 283 at Pećine near Kostolac (*fig. 1: 2*). The latest dated find is represented by

a knife with a ring at the end of the handle from the late La Tène tool hoard from Lozna in Romania (*fig. 1: 4*).<sup>61</sup>

The majority of researchers consider that slashing knives were not primarily used as weapons, but rather as a tool for the most varied tasks in a household, such as for chopping meat.<sup>62</sup> One of the arguments for this claim results from the fact that they practically do not appear at any cult site with ritually deposited weapons.

#### Curved knife

Curved knives with a short handle plate of triangular shape and one rivet (*Pl. 2: 4*) belong among the leading forms of the late La Tène period in the Croatian and Serbian parts of Danube basin,<sup>63</sup> where they were retained unto the early Roman period, while elsewhere they are rare.<sup>64</sup> On the other hand, in the more easterly Thracian-Dacian region of northwestern Bulgaria, Wallachia (Oltenia), and southwestern Transylvania, i.e. the area of the Padea-Panaghiurski Kolonii group, a longer curved knife with a handle plate was characteristic,<sup>65</sup> called a *sica*, which appears only occasionally among the Scordisci and elsewhere.<sup>66</sup> Zoomorphic decoration is characteristic on this (primarily motifs of birds of prey and accompanying sun symbols), while simple ornamentation in techniques of punching and embossing (geometric figures, crescents, various rows) on the blades of knives and spearheads appears in the broader region of the central and lower Danubian basin, but practically this does not extend to the area settled by the Taurisci (*list 2 / map 2*).

Curved knives with a triangular plate from the regions of the Scordisci occasionally have a shallow groove below the back of the blade (blood channel),<sup>67</sup> which is sometimes accompanied by punched motifs,<sup>68</sup> but more frequently by embossed geometric figures.<sup>69</sup> Etched decoration, which was widespread at this time primarily among the Germans and the

<sup>56</sup> Božič 1981, form 24 a; Idem 1987, 874, fig. 44: 6, 7; e.g. the knives from Slatina (Pirkmajer 1991, Pl. 6: 31), a grave at Veliko Mraševo (Guštin 1977, Pl. 8: 3), grave 12 at Zvonimirovo (Majnarić-Pandžić 2001, Pl. 2: 2) and grave 59 at Karaburma (Todorović 1972, Pl. 20: 1).

<sup>57</sup> Grave finds: Čubarsko Brdo in the Đerdap - Iron Gates (*fig. 1: 3*; Popović 1991, fig. 1: 3), grave 39 at Rospi Ćuprija (Božič 1981, Pl. 7: 8); individual finds: Andrășida (Hunyady 1942-1944, Pl. 52: 7).

<sup>58</sup> Karaburma - lacking a grave unit (Todorović 1968, Pl. 33: 1; Idem 1974, fig. 67).

<sup>59</sup> Graves: G-1-3 283 from Pećine near Kostolac (Jovanović 1984, 68, fig. 4: 4), Veliko Selo - rivet with three incisions (Božič 1980, Pl. 27: 3; Todorović 1971, Pl. 20: 2), Ritopek (Idem 1973-1974, fig. 7). Lacking a grave unit: Surčin (Majnarić-Pandžić 1970, Pl. 44: 2), vicinity of Sremska Mitrovica (Todorović 1968, Pl. 44: 8; 46: 1), Gospođinci (Ibid., Pl. 50: 12).

<sup>60</sup> Pauli 1978, 253, Abb. 35: 107.

<sup>61</sup> Teodor 1980, 138, Abb. 8: 2.

<sup>62</sup> Pauli 1978, 254-258.

<sup>63</sup> Božič 1981, Pl. 3: 37; e.g. Karaburma, gr. 28 (Todorović 1972, Pl. 11: 1), gr. 32 (Ibid., Pl. 13: 1), gr. 44 (Ibid., Pl. 17: 4), gr. 94 (Ibid., Pl. 29: 2).

<sup>64</sup> The attribution of a knife to a male burial could also be confirmed by its length, as the analysis of the knives at the cemetery of Karaburma showed that female graves, or those without weapons, contained only little knives, shorter than 15 cm (Božič 1980, 62, Tab. C).

<sup>65</sup> Rustoiu 2002, 57-61, fig. 38.

<sup>66</sup> Božič 1981, Pl. 3: 36.

<sup>67</sup> E.g. grave 145 from Karaburma (Todorović 1972, Pl. 36: 1).

<sup>68</sup> See, for example, the curved knife with a perpendicularly profiled transition to the blade from the site of Zemun-Gardoš. Below the back it has a horizontal row of punched hollows (Majnarić-Pandžić 1970, Pl. 46: 6). A similar punched decoration can also be found on the knives from grave 25 at Karaburma (Todorović 1972, Pl. 9: 1), Novi Banovci (Majnarić-Pandžić 1970, Pl. 28: 5), and Kupinovo (Majnarić-Pandžić 1970, Pl. 16: 8).

<sup>69</sup> Somewhat more curved knives come from grave 1 at Ajmana in the Đerdap, where among other items they found a bronze ladle of the Pescate type. A short triangle tang plate with a hole for a rivet characterizes both knives. The larger, 30.6 cm long example was decorated under the back with a embossed motif of small stars, accompanied by a wide groove (Stalio 1986, fig. 42). The smaller example (11.7 cm; Ibid., fig. 40) has a narrow groove just under the back, accompanied by a row of alternatively placed triangles. The row and the groove are interrupted in the center by one star, similar to those on the larger knife. A similar decoration of three circles in an interrupted groove can also be found on a somewhat shorter knife with a longer tang from grave

western Celts,<sup>70</sup> is known for the region between the eastern Alps and the Balkans only on the blades of several spearheads (*list 2 / map 2*), while the use of this technique on knives has not been sufficiently proven.

#### Personal equipment

The razor with a straight back and a somewhat convex cutting edge and a downwards bent handle (*Pl. 2: 5*) had a terminal in the shape of a horse head with open jaws, while the slender handle is decorated with a stylized mane. Decorated examples include a razor with a broadening in the shape of a duck head with an open beak from a grave at Vojakovac near Križevci,<sup>71</sup> and a razor with a partly preserved handle from Novi Banovci,<sup>72</sup> while the razor from Malunje had a horizontal handle where the duck had a closed beak.<sup>73</sup> The decoration is reminiscent of the terminal of the iron pin from grave 436 at Kapiteljska njiva,<sup>74</sup> while horse heads can also be found on the hooks of bronze chain belts of the earlier phase of the middle La Tène period.<sup>75</sup>

The scissors from Slatina belong among characteristic forms of the middle La Tène period,<sup>76</sup> while the slight convexity at the top of the handle already shows similarities to the so-called omega handles from the LT C2<sup>77</sup> and D1 phases.

#### Attire and jewellery

The almost identical iron fibulae with a globular button on the foot, which was attached to the very end of the rectangular bow (*Pl. 2: 8,9*), can be classified on the basis of the width of the bow near the head and the eight coiled spring to the later part of the middle La Tène. This form of fibula most probably represents a typological variant of examples with a shorter foot and larger spring with four coils, which are characteristic for

the LT C1 phase.<sup>78</sup> The type from Slatina is known at the area of the Mokronog group, for example from grave 5 at Dobova<sup>79</sup> and grave 156 at Kapiteljska njiva,<sup>80</sup> while a similar fibula was also deposited in grave 12 at München-Obermenzing.<sup>81</sup> Several such fibulae were discovered in a grave from Arceto in the province of Reggio Emilia, which De Marinis dated to the LT C1 phase,<sup>82</sup> although it is more likely to belong to the later part of the middle La Tène.

The iron bracelet of circular section with overlapping ends (*Pl. 2: 10*) and a diameter of ca. 8 cm, belongs among the simple forms of jewellery that appear in male graves from as early as the early La Tène period onwards.<sup>83</sup> Primarily in the regions of the Scordisci they are more frequent in the late La Tène.<sup>84</sup>

#### Fork

Although the practical use of the pronged bent fork with a short tubular socket is not entirely clear (*Pl. 2: 7*), similar tools are most often analyzed in the literature together with pronged scoops for lifting cooked meat and other foods from a kettle, known from depictions and literary citations in the Graeco-Etruscan world (Gr. *creagra*; Lat. *harpago*). Iron forks produced according to Italic models appear in the Ha C horizon,<sup>85</sup> and in numerous variants they are particularly common in the late La Tène.<sup>86</sup> At that time in the central European regions two and three pronged forks appeared with smooth, square or spirally twisted straight shanks that ended in a ring or with a socketed or tanged continuation for a wooden handle. To make it easier to scoop up the food the part with the prongs, which were usually forged or riveted to one another, was bent to the side at a right angle.<sup>87</sup>

In addition to finds from settlements, forks are also known in the late La Tène from tool hoards,<sup>88</sup> graves, and cult sites, which clearly indicates that in addition to use in everyday life they also played a role in burial rituals and ritual ceremonies.

3/1983 at the nearby cemetery of Vajuga-Pesek, which among other items contained a bronze jug of the Gallarate type and a sword in a scabbard with a spur-shaped ending (Popović 1991, fig. 4: 8). A larger sica also comes from Vajuga, with a decoration of a row of incised triangles and a groove, interrupted by a motif of four concentric circles (Popović 1991, fig. 3: 3). Short knives, decorated with two circles, and with iron guards are also known from graves 14 and 18 at Karaburma (Todorović 1972, Pl. 5: 1; 7: 5), while a narrow knife comes from grave 13 with a rhomboid tang and triangular blade, decorated with concentric circles (Ibid., Pl. 5: 3). A knife from Dalj with a long tang and three holes for rivets was decorated with a row of alternatively placed incised triangles and a small circle (Majnarić-Pandžić 1970, Pl. 24: 10).

<sup>70</sup> Most recently in Łuczkiwicz 2002.

<sup>71</sup> Majnarić-Pandžić 1970, Pl. 47: 2.

<sup>72</sup> Ibid., Pl. 28: 3.

<sup>73</sup> Ibid., 35, Pl. 36: 9.

<sup>74</sup> Križ 1999.

<sup>75</sup> Božič 1987, 874-875, fig. 44: 10.

<sup>76</sup> E.g. the grave from Odžaci (Guštin 1984b, Pl. 6: 3).

<sup>77</sup> Božič 1987, 876, fig. 45: 13.

<sup>78</sup> Gebhard 1991, 15, Abb. 5: 13a.

<sup>79</sup> Guštin 1984a, Abb. 19: 21.

<sup>80</sup> Križ 2001, fig. 116.

<sup>81</sup> Krämer 1985, Taf. 60: 2; a similar example with a decorated foot also was found at Bačko Gradište (Jovanović 1991, Pl. 4: 6).

<sup>82</sup> De Marinis 1977, 33, Pl. 7: 2,3,5-7.

<sup>83</sup> E.g. grave G-1-3 283 from Pećine near Kostolac (LT B2; Jovanović 1984, 67, 71, fig. 2: 6; 4: 1), graves 10 and 25 from Dobova (Guštin 1981, Abb. 3: 2), grave 1 from Visoka Ravna at Brestovik (Božič 1981, Pl. 7: 6) and the burial at Odžaci (Guštin 1984b, Pl. 6: 2).

<sup>84</sup> E.g. graves 4, 18, 110, and 137 from Karaburma (Todorović 1972, Pl. 1: 2; 7: 2,3; 32: 6; 36: 6).

<sup>85</sup> The grave in the large tumulus at Gornja Radgona contained a bronze fork with seven prongs and a socketed shank (Teržan 1990, 86, fig. 19: 7).

<sup>86</sup> Perrin 1990, 63-69.

<sup>87</sup> Jacobi 1974, 126-129.

<sup>88</sup> Also see, for example, the forks in the hoard from Kijevo near Vrlika in the Dalmatian hinterland (Milošević 1986, 104, 116, fig. 7: 5; 12: 2).

Forks with several forged prongs and spirally twisted handles were particularly widespread in the southern Alpine valleys,<sup>89</sup> and they can also be found at the cemeteries in the vicinity of Verona,<sup>90</sup> the sanctuary of Lâgole di Calalzo,<sup>91</sup> and at the cemeteries in the Soča River valley.<sup>92</sup>

The hooked forks with a handle, which given the two-part tubular mount was evidently wooden, also have analogies among the late La Tène material. Examples are known with two to four, more or less bent prongs and various types of handles. The two-part tubular mount is frequently not preserved because of the lesser thickness of the metal sheet, although the strips that reinforced the socket indicate its presence.<sup>93</sup> At the oppida appear also more rustically produced forks, equipped with a short spirally twisted shank and a single-part tubular socket.<sup>94</sup>

Pronged tools are also common in the late La Tène graves of the Croatian and Serbian Danubian regions,<sup>95</sup> and here we can find the best comparisons for the fork from the collection. The tool from grave 172 at Karaburma has four prongs spirally twisted in the center, with square sections and bent tips (*fig. 2: 1*). The prongs were forged from one piece, in which process the outer ones were bent at their beginning into a saddle shape, while the central two emerge from the broadened tang. The fork had a wooden handle, to which it was attached with a two-part tubular mount. In addition to the central tang, two split pins emerged from the mount, attached through the saddle-shaped section of the outside prongs.<sup>96</sup> Simply made form of this type also appear in rich grave 222. The fork with a bent shank has three prongs, which are attached to one another with ties bent into figure eights.<sup>97</sup>

Similar forks with a tubular mount were also found in the hoard (?) find at the settlement of Larina near Lyon, which primarily contained material from the 1<sup>st</sup> century BC,<sup>98</sup> and in the large find of late La Tène tools from the swamp near Lozna in Romania (*fig. 2: 2*),<sup>99</sup> and differently preserved examples with two or three prongs can also be found among the late La Tène material from the settlement on the hill of Sainte-Blandine in the vicinity of Vienne.<sup>100</sup>

### Commentary

Given the typological-chronological classification of the objects and the questions presented in the introduction about the ac-

tual source of the finds, we first must touch on the possibility that this could represent the contents of a single warrior burial. The relatively great and above all uniform degree of preservation of the grave goods certainly cannot be overlooked, but neither can the absence of deliberate damage with the exception of one of the spearheads, which indicates that the objects, as was the case for the majority of graves at Slatina, had been placed in undamaged form in the grave pit. The main body of the objects, i.e. the sword with a scabbard, the belt set, a spearhead with a bi-convex blade, the scissors, razor, and fibulae, form a characteristic inventory of a male burial from the late phase of the middle La Tène period, which in addition to other grave units from Slatina has firm analogies in the reference grave 12 at München-Obermenzing.<sup>101</sup> The slashing knife with a rivet on the blade is somewhat conspicuous in this context, as there are no analogies in the region of the Mokronog group.

Even more "problematic" in the supposed grave unit are the decorated curved knife and the fork, which are known exclusively from late La Tène contexts, and attention should also be drawn to the umbo and long spearhead, as similar weaponry appears both in the LT C2 horizon, as well as at the transition to the next phase. If this were to be considered as a burial of the Mokronog group, the unusual combination would stand out of a sword, two spearheads, and two knives, which are more often found in the late La Tène graves of the Serbian and Croatian parts of Danubian basin. The attribution of all of the presented material to a single grave unit seems unlikely given the considerable chronological span, and this possibility is further denied by the almost complete absence of burials of the LT D phase in Styria, which is also characteristic for Bohemia, Moravia, and Hungary. In the light of these facts, it cannot be excluded that some of the objects from the collection in fact may have come from illegal excavations in the Danube basin.

*List 1 / Map 1: Sites of slashing knives with a rivet at the beginning of the blade.*<sup>102</sup>

1. Lozna (Teodor 1980, 138, no. 45, Abb. 8: 2)
2. Čubarsko brdo (Popović 1991, fig. 1: 3)
3. Kostolac-Pećine; gr. G-1-3 283 (Jovanović 1984, 68, fig. 4: 4)

<sup>89</sup> Nothdurfter 1979, 60-62, Taf. 43.

<sup>90</sup> Salzani 1998, Tav. 28: 3; 38: 5.

<sup>91</sup> Fogolari, Gambacurta 2001, 295, fig. 550.

<sup>92</sup> Guštin 1991, 66, Pl. 17: 6; 45: 4; the three-pronged fork from Ajdovski gradec dates most probably also to the late La Tène (Gabrovec 1966, t. 3: 1).

<sup>93</sup> E.g. the fork with bent tips and split pin for attachment, found together in grave 3 at Sotin together with a long spirally twisted spit with a ring (Majnarić-Pandžić 1972-1973, Pl. 4: 1,11; Božič 1981, Pl. 9: 6,7).

<sup>94</sup> Pič 1903, Pl. 35: 19-21.

<sup>95</sup> Božič 1981, 320, Pl. 4: 41. Grave 12 at Karaburma contained, in addition to a bronze ladle of the Pescate type, a three-pronged fork with a hammered socket where the two outside prongs were forged to the central one (Todorović 1972, Pl. 4: 3). A similar combination was also documented in grave 97, with straight forks with a long spirally twisted handle and a divided two-pronged tip (*Ibid.*, Pl. 30: 9,10,13). Grave 50 contained a fragmentary three-pronged example (*Ibid.*, Pl. 18: 3). A three-pronged fork with a long spirally twisted handle with a ring on the end and a similar spit were also found at Obrež in Strymia (*Idem* 1968, Pl. 49: 10,11).

<sup>96</sup> Todorović 1972, Pl. 38: 9.

<sup>97</sup> *Ibid.*, Pl. 39: 8; a similar fork with three spirally twisted prongs and one split pin is also known from the site of Dalekovod at Ritopek (*Idem* 1971, 131, Pl. 60: 7).

<sup>98</sup> Perrin 1990, 66, fig. 55: 232.

<sup>99</sup> Teodor 1980, 139, Abb. 9: 4; 12: 1.

<sup>100</sup> Chapotat 1970, Pl. 21: 10,11,16,17,22.

<sup>101</sup> Krämer 1985, Taf. 60.

<sup>102</sup> We would like to thank Dr. Dragan Božič for drawing our attention to the slashing knives with a rivet from Ada, Kostolac, Kupinovo, Lozna, Nikinci, southeastern Pannonia, and an unknown site, to the decorated curved knife from Osijek, and the decorated spearheads from Ruma, Sotin, Sremska Mitrovica, and Subotiče.

4. Ritopek-Plavinački potok (Todorović 1973-1974, fig. 7)
5. Beograd-Karaburma (Todorović 1968, Pl. 33: 1; 1974, fig. 67)
6. Beograd-Rospi Čuprija; gr. 39 (Todorović 1967, 194, fig. 4; Božič 1981, Pl. 7: 8)
7. Surčin (Majnarić-Pandžić 1970, Pl. 44: 2)
8. Kupinovo (Todorović 1968, 150, Pl. 44: 8; Majnarić-Pandžić 1970, 84, Pl. 15: 4)
9. Nikinci (Todorović 1958, 28, fig. 4)
10. Vicinity of Sremska Mitrovica (Todorović 1968, fig. 46: 1)
11. Gospodinci (Todorović 1968, Pl. 50: 12; Knežević-Jovanović 2003, 289, Pl. 4: 3)
12. Veliko Selo (Todorović 1971, 29-30, Pl. 20: 2)
13. Ada (Maráz 1982, 107, Pl. 1: 4)
14. Andrásida (Börzsönyi 1911, fig. 7; Hunyady 1942-1944, Taf. 52: 7)
15. Slatina v Rožni dolini? (Pl. 2: 2)
16. Hallein-Dürrenberg (Pauli 1978, 253, Abb. 35: 107)
17. Southeastern Pannonia (Reinecke 1907, 45, Abb. 9: i; Hunyady 1942-1944, Taf. 31: 1)
18. Unknown site (*Jb. Röm-Germ. Zentmus.* 47/2, 2000 [Mainz 2003] 763, Abb. 50)

*List 2 | Map 2:* Sites of late La Tène spearheads and daggers with etched, embossed, and punched decoration between the eastern Alps and the Serbian part of Danube.

#### Spearheads

1. Mala Vrbica-Ajmana; gr. 1 (Stalio 1986, fig. 43; 44)
3. Beograd-Rospi Čuprija; gr. 27 (Todorović 1956, 47, fig. 30; Garašanin 1960, Abb. 1; Todorović 1968, Pl. 31: 8)
4. Beograd-Karaburma; gr. 28 (Todorović 1972, Pl. 11: 3,4)
6. Zemun (Majnarić-Pandžić 1966, 6, Pl. 5: 2; 6)
9. Ruma-Velike Ledine (Bašte) (Todorović 1968, 149-150, Pl. 41: 4-5; Majnarić-Pandžić 1970, 41)
10. Subotište (Todorović 1968, 150, Pl. 41: 7,8; *Ruma i okolina u doba Skordiska* [Ruma 1986], ill. on p. 3)
11. Sremska Mitrovica (Łuczkiwicz 2002, 36, Abb. 17)
12. Otok-Laze (Dizdar 2001, Pl. 1: 7)
13. Sotin-Zmajevac; gr. 3 (Božič 1981, Pl. 9: 3)
14. Ivankovo-Bedem-grad (Dizdar 2001, Pl. 1: 6)
18. Šmarje-Magdalenska gora; gr. V/42 (Hencken 1978, fig. 163: a)

19. Ljubljana: Kamin (Vuga 1980, 202, fig. 3: 1), Blatna Brezovica (National Museum of Slovenia; unpublished), Lipavec (National Museum of Slovenia; unpublished)
20. Gracarca (Gleirscher 1993, 83, Abb. 34: 1-3)

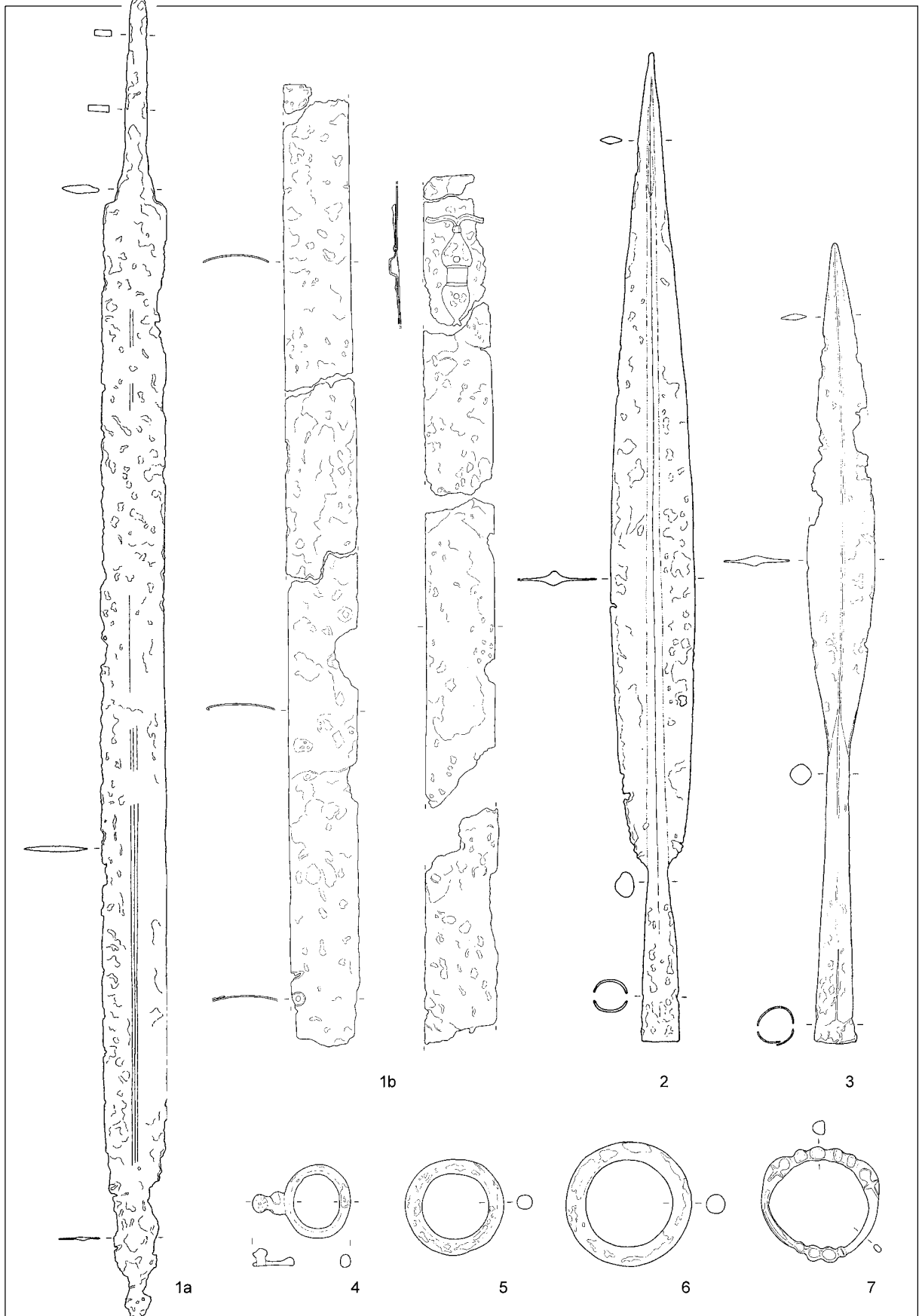
#### Daggers

1. Mala Vrbica-Ajmana; gr. 1 (Stalio 1986, fig. 40, 42)
2. Vajuga-Pesak; gr. 3/1983 (Popović 1991, fig. 4: 8; 3: 3)
3. Beograd-Rospi Čuprija (Todorović 1971, 126-127, Pl. 59: 4)
4. Beograd-Karaburma; gr. 14, 13, 18, 25 (Todorović 1972, Pl. 5: 1,3; 7: 5; 9: 1)
5. Zemun-Gardoš (Majnarić-Pandžić 1970, Pl. 46: 6)
7. Kupinovo (Majnarić-Pandžić 1970, Pl. 16: 8)
8. Novi Banovci (Majnarić-Pandžić 1970, Pl. 28: 5)
15. Dalj (Majnarić-Pandžić 1970, Pl. 24: 10)
16. Osijek-Donji grad (Spajić 1954, 15, Pl. 5: 35; Šimić, Filipović 1997, 16, fig. 9, 34, no. 44).
17. Slatina v Rožni dolini? (Pl. 2: 4)

Andrej Gaspari  
Univerza na Primorskem  
Znanstveno-raziskovalno središče  
Inštitut za dediščino Sredozemlja  
Garibaldijeva 18  
SI-6000 Koper  
andrej.gaspari@siol.net

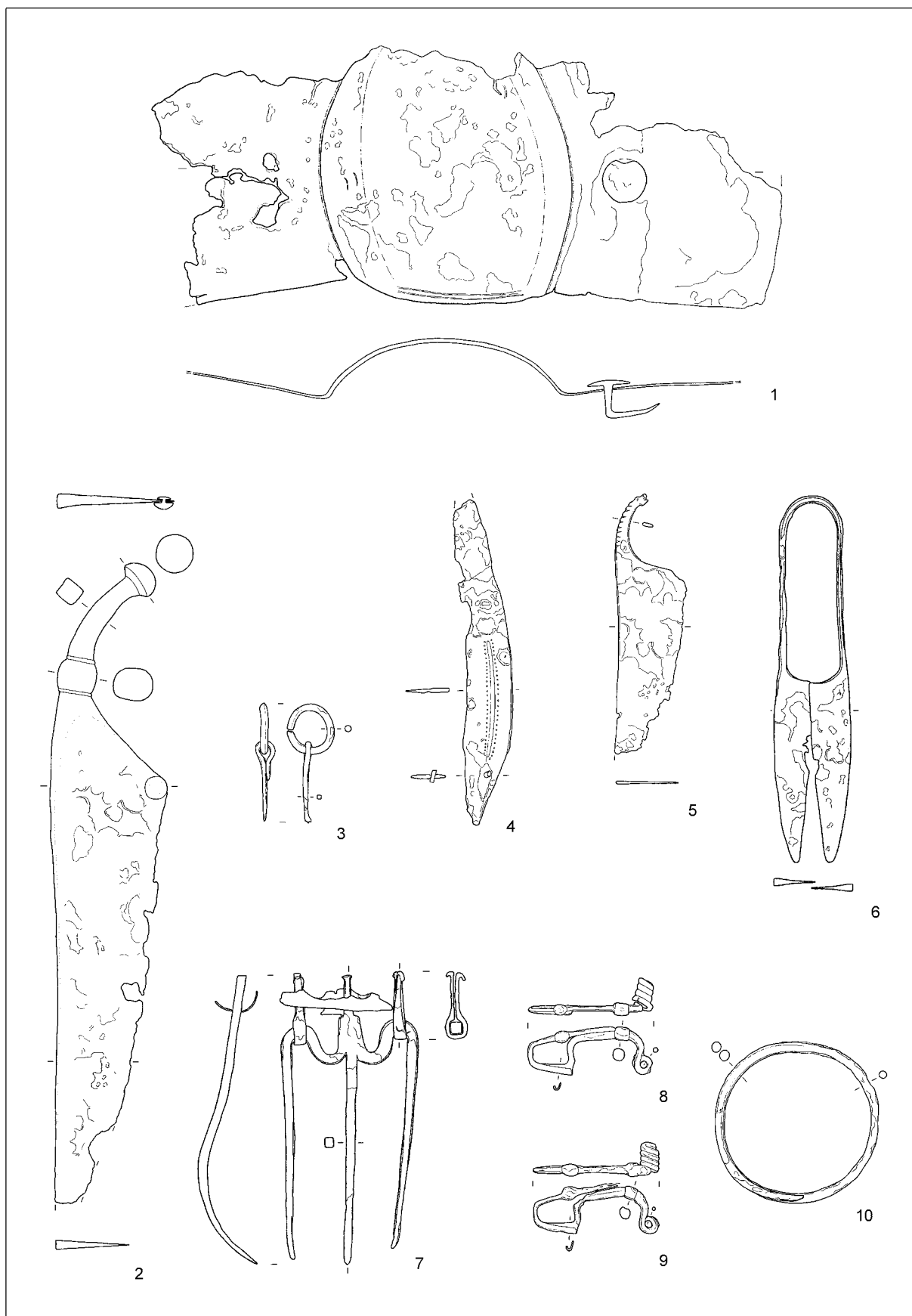
Robert Krempuš  
Zavod za varstvo kulturne dediščine Slovenije  
Območna enota Celje  
Glavni trg 1  
SI-3000 Celje  
robert.krempus@siol.net

Danijela Brišnik  
Zavod za varstvo kulturne dediščine Slovenije  
Območna enota Celje  
Glavni trg 1  
SI-3000 Celje  
danijela.brisnik@siol.net



*T. I: Slatina v Rožni dolini pri Celju? Vse železo. M. 1 = 1:4; 2-7 = 1:3.*

*T. I: Slatina in the Rožna dolina near Celje? All iron. Scale: 1 = 1:4; 2-7 = 1:3.*



T. 2: Slatina v Rožni dolini pri Celju? Vse železo. M. = 1:3.

T. 2: Slatina in the Rožna dolina near Celje? All iron. Scale = 1:3.