



Drey Offertorien
für

Gesang und Orgel.

von Ferd. Wrona.

J. Raphael Mementic
Ober. Theol. Stud. 1851.
O

Moderato

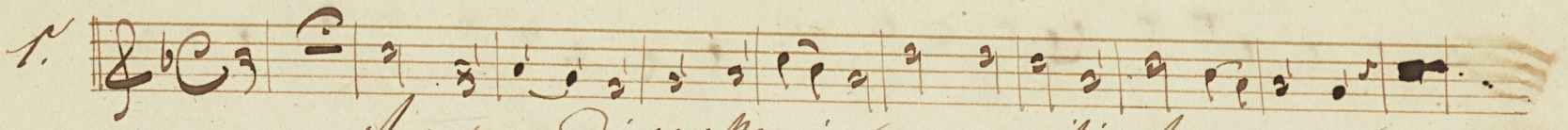
Organo.

Ave *Mundi* *Cum* *Organo*

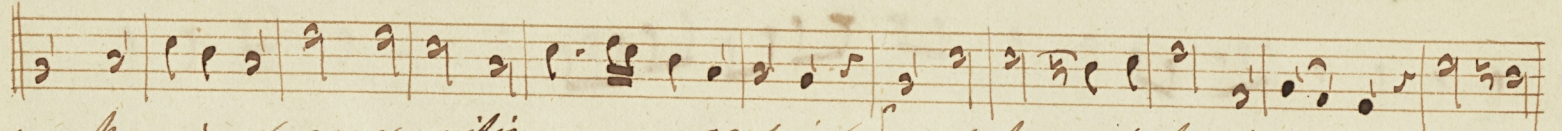
The image shows a handwritten musical score on aged paper. At the top left, the tempo is marked 'Moderato'. The title 'Organo.' is centered at the top. The score begins with two vocal parts: 'Ave' and 'Mundi', each on a single staff with a treble clef and a common time signature. The 'Ave' part is written in a cursive hand, and the 'Mundi' part is written in a more formal, printed style. Below the vocal parts is a large section of organ accompaniment, consisting of multiple staves. The organ part is written in a cursive hand and includes various musical notations such as notes, rests, and clefs. The score concludes with a double bar line and a sharp sign. There are some decorative flourishes and a large circular mark at the end of the organ part.

Moderato.

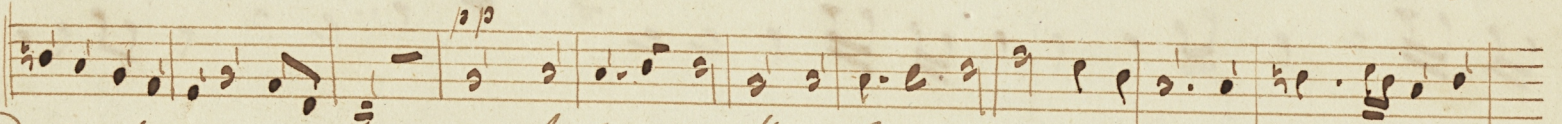
Canto.

1. 

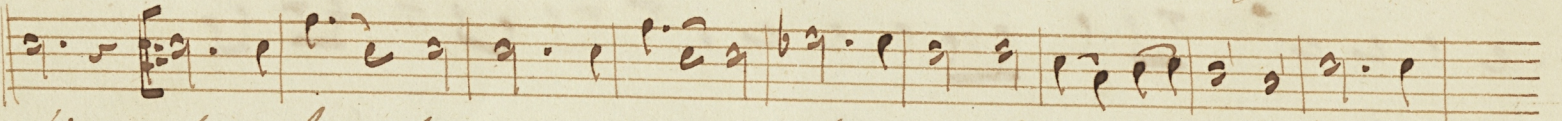
A ve muni di spes Ma ri a a ve mitio A ve pia



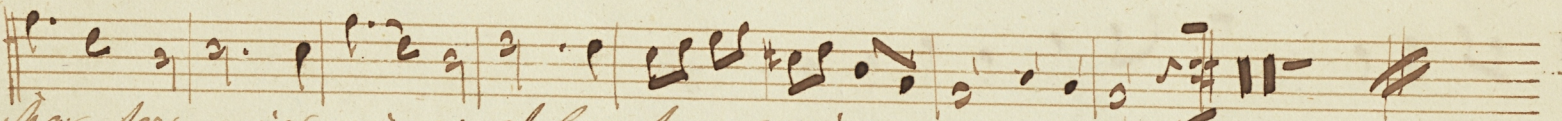
spe Ma ri a a ve mitio a — ve pia fa ve cha — ri ta te plena origo



Dulcis et vere — na san cta pa — rens Je su Chri — sti e lecta sola fu — i —

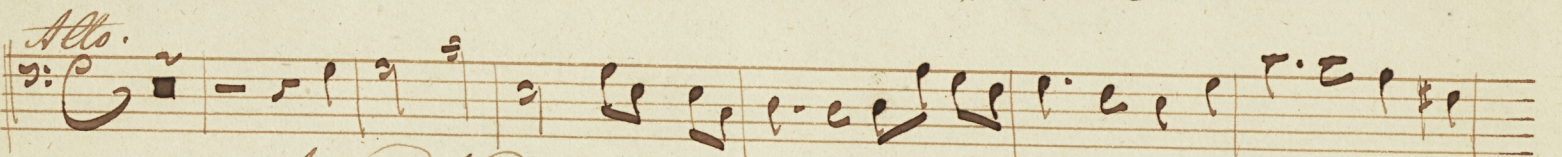


sti e pe Ma — ter si ne vi — ro et loc ta re mo re miro e pe.

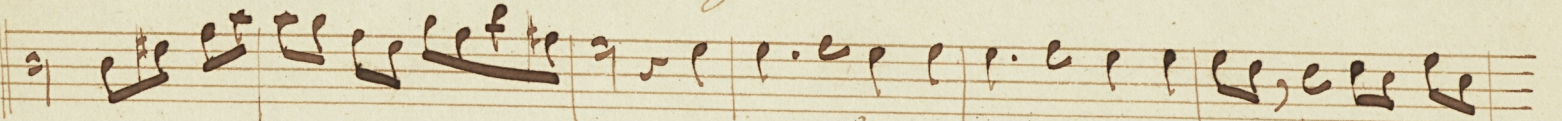


Ma — ter si ne vi — ro et loc ta re mi ro mo — re

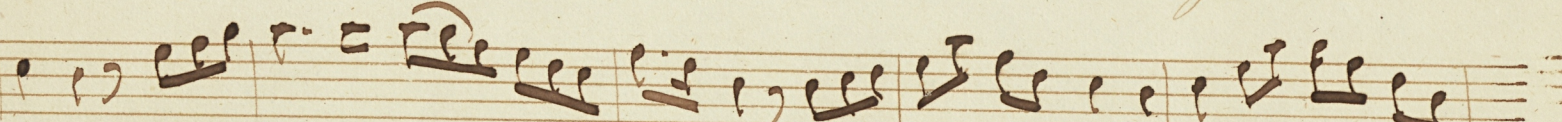
2.

Alto. 


As cendit De us in ju bi la ti o — ne et Do mi nus in



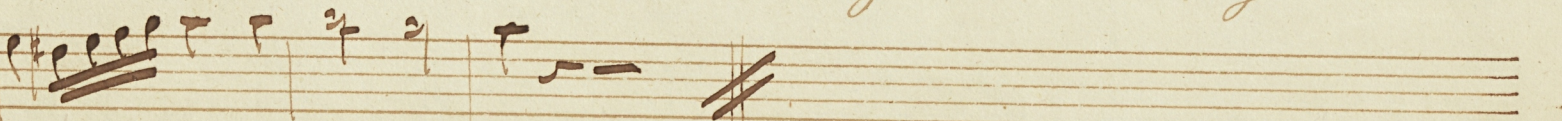
ro ce in ro ce tu ba as cendit — Je — us in ju bi la ti



o ne et Do mi nus in ro ce in ro ce tu — barn ro ce

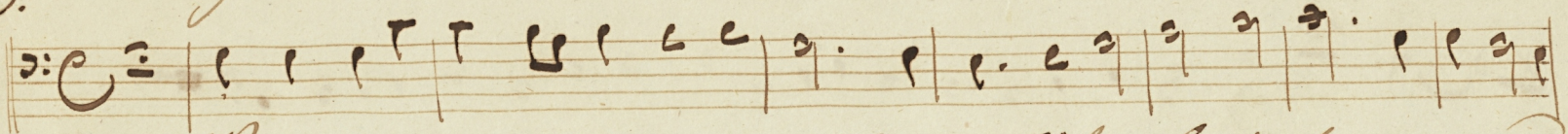


tu — ba Alle lu — ja et le — lu ja alle

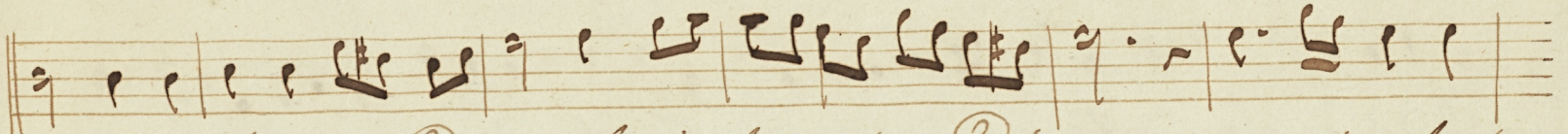


lu — ja al le lu ja

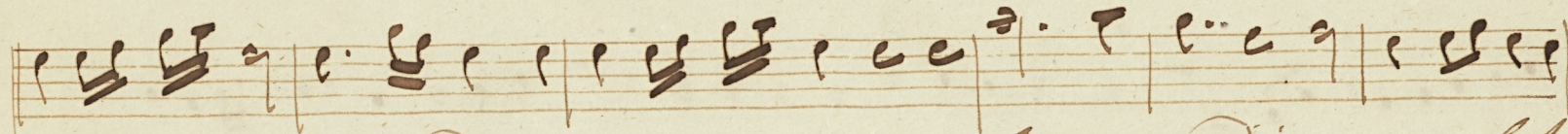
3. Allegro



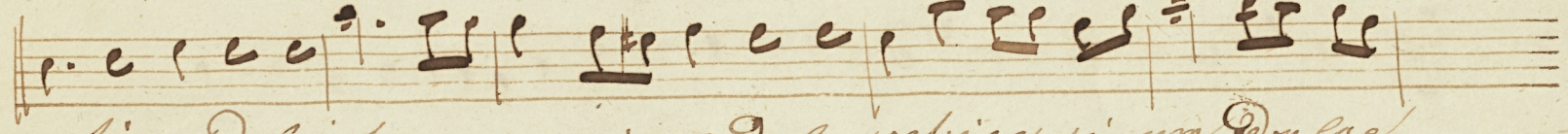
Veni sancte spiritus et emitte coeli tui lucis tuae radi-



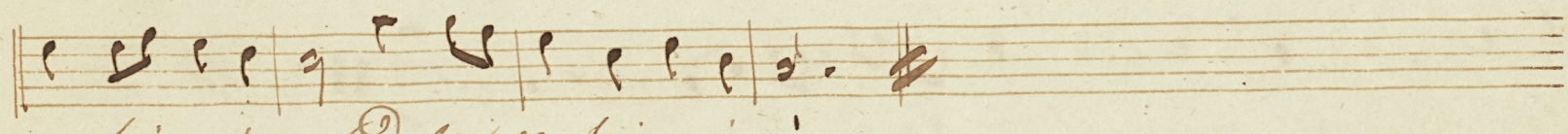
um lucis tuae radi um lucis tuae radi um veni pater



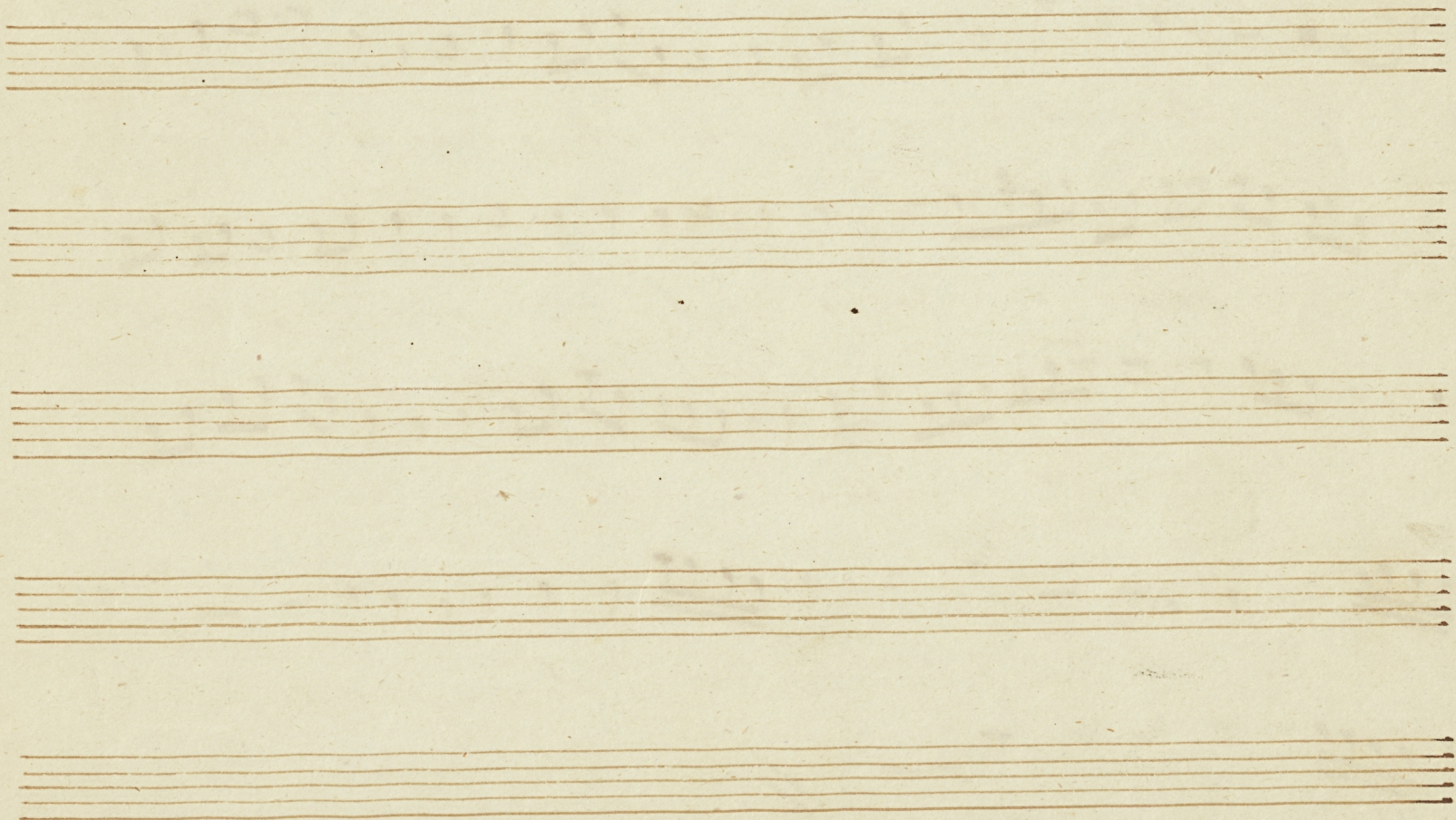
pauperum veni dator munerum veni lumen cordium consolator



optime dulcis hospes a ni ma dulce refuige ni um Dulce



refrigerium Dulce refrigerium.



Allegro.

L.

Handwritten musical notation on a five-line staff. The notation includes a treble clef, a key signature of one sharp (F#), and a series of notes and rests. The notes are written in a cursive style, and there are several rests indicated by horizontal lines. The staff is positioned at the top of the page, and the rest of the page is blank.

