

Tantum Ergo

a

Basso I.^{mo} et II.^{do}

con

Organo.

Comp. Signy. Franc. Kubik.

Conv. Neostadiensis

Organo.

This is a handwritten musical score for organ, consisting of six systems of staves. The music is written in a common time signature (C) and a key signature of two flats (B-flat and E-flat). The notation includes various clefs (treble and bass), notes, rests, and dynamic markings such as *p.*, *f*, and *pedal*. The score is arranged in a traditional organ layout, with the right hand (treble clef) and left hand (bass clef) parts often sharing a system. The first system begins with a treble clef and a common time signature, followed by a bass clef. The second system continues with both hands. The third system features a treble clef with a melodic line and a bass clef with a supporting line. The fourth system includes a treble clef with a melodic line and a bass clef with a line marked *pedal*. The fifth system shows a treble clef with a melodic line and a bass clef with a line marked *f*. The sixth system concludes with a treble clef and a bass clef. The handwriting is clear and legible, typical of 18th or 19th-century manuscript notation.

Handwritten musical notation, first system. The upper staff features a complex texture with many beamed notes and rests, while the lower staff contains a more rhythmic melody with some accidentals.

Handwritten musical notation, second system. The upper staff continues with dense, beamed notes, and the lower staff shows a melodic line with various note values and rests.

Handwritten musical notation, third system. The upper staff has a series of beamed notes, and the lower staff features a melodic line with some slurs and dynamic markings.

Handwritten musical notation, fourth system. The upper staff contains beamed notes and rests, while the lower staff has a melodic line with a prominent slur and dynamic markings.

Handwritten musical notation, fifth system. The upper staff shows beamed notes and rests, and the lower staff has a melodic line with a slur and dynamic markings.

Basso *f* mo.

Handwritten musical notation on a five-line staff, including a treble clef, a key signature of one sharp (F#), and a common time signature (C). The notation consists of several measures of music with various note values and rests.

Tan-tum ergo Tan-tum ergo Sa-cra-mentum ve-ne
Ge-ni-tori Ge-ni-tori ge-ni-toque laus et

Handwritten musical notation on a five-line staff, continuing the piece with various note values and rests.

remur vene-re-mur cer-nu-i Et an-tiquum et an-tiquum
ju-bi lauset ju-bi-la-ti-o Sa-lus honor vir-tus honor

Handwritten musical notation on a five-line staff, continuing the piece with various note values and rests.

do-cu-mentum no-vo cedat novo cedat novo cedat ritu=
vir-tus quoque fit et bene fit et bene fit et bene = dicti =

Handwritten musical notation on a five-line staff, continuing the piece with various note values and rests.

Præstet fides supple-mentum sensu=
Pro-cedenti ab-u-troque compar

Handwritten musical notation on a five-line staff, continuing the piece with various note values and rests.

um de-fec-tu-i. Tan-tum ergo Sa-cra-mentum vene-
fit laudati-o. Ge-ni-tori ge-ni-toque laus et

Handwritten musical notation on a five-line staff, continuing the piece with various note values and rests.

remur cer-nu-i et antiquum do-cu-
jubila-ti-o lauset ju-bi-la-ti-o. Sa-lus honor vir-tus

Handwritten musical notation on a five-line staff, continuing the piece with various note values and rests.

men-tum et antiquum do-cu-mentum novo cedat ritu=i no-vo
quo-que Sa-lus honor vir-tus quo-que fit et bene dicti-o fit et

Handwritten musical notation on a five-line staff, continuing the piece with various note values and rests.

ce-dat ri-tu=i præstet fides supple-mentum præstet fides supple-
be-ne-dic-ti-o pro-cedenti ab-u-troque pro-cedenti ab-u-

Handwritten musical notation on a five-line staff, continuing the piece with various note values and rests.

men-tum sensum de-fec-tu-i sensu=i um de-fec-tu-i
tro-que compar fit laudati-o compar = fit lau-da-ti-

Handwritten musical notation on a five-line staff, continuing the piece with various note values and rests.

i de-fec-tu-i.
o lau-da-ti-o.

Tantum ergo sacramentum veneratione cerni tantum
origeni loque laus et jubi latio geni

ergo sacramentum veneratione cerni, veneratione
origeni loque laus et jubi latio geni laus et

remerceri et an dignum docu mentum et an dignum
jubi latio o salus honor virtus quoque salus honor

docu mentum novo cedat ritui i no vo
virtus quoque sit et bene dicti o. sit et

cedat ritui i. Praefat fides simple
bene dicti o. Proce dentibus

mentum sensu um de factu i et an
loque compar sit laudati o salus

dignum docu mentum novo cedat ritui
honor virtus quoque sit et bene dicti

i. sensu um de factu i.
o. compar sit laudati o.

Empty musical staves at the bottom of the page.

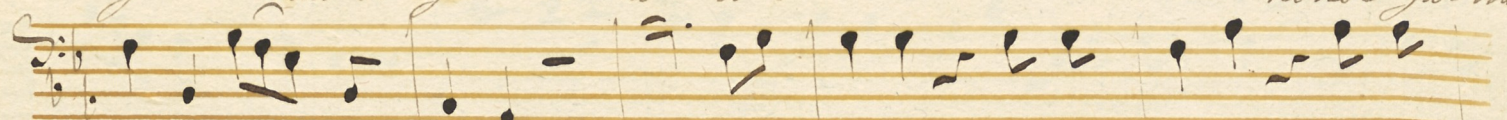
Basso II do.



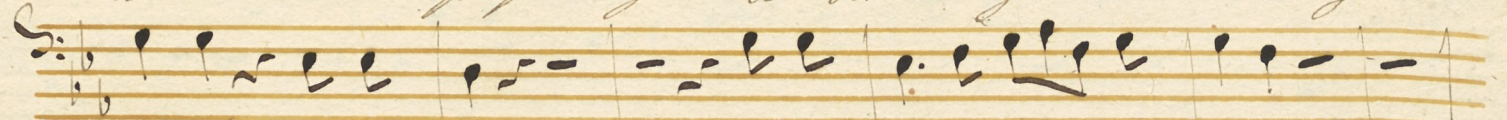
Tan-tum ergo tan-tum ergo Sa-cra-mentum ve-ne
Ge-ni-tori ge-ni-tori ge-ni-togne laus et



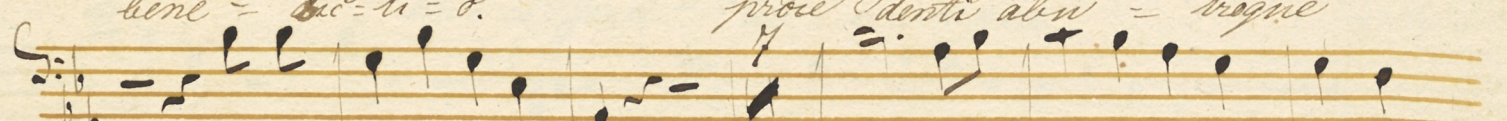
remur ve-ne-re-mur cer-nu-i Et an-tiquum et an-
jubi laus et ju-bi-la-ti-o Sa-lus honor fa-lus



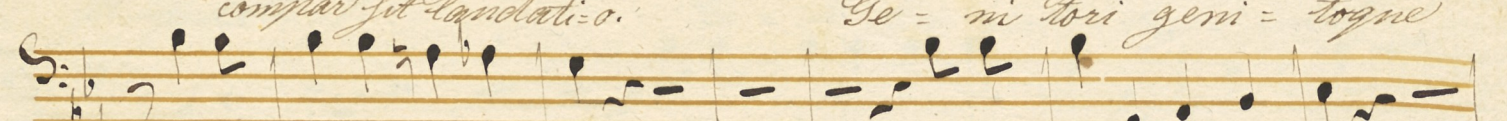
tiquum do-cu-mentum no-vo cedat no-vo cedat novo
honor vir-tus quoque fit et bene fit et bene fit et



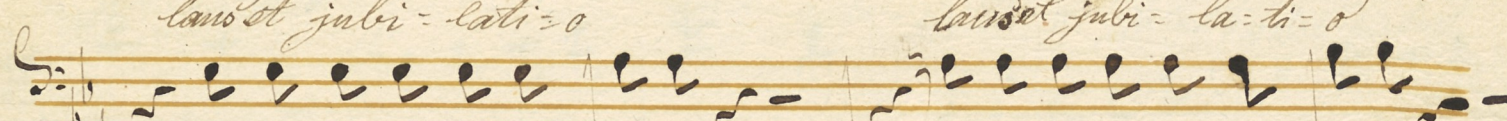
cedat ri-tu-i. praestet fides symple-mentum
bene-dic-ti-o. proe-denti abu-trogne



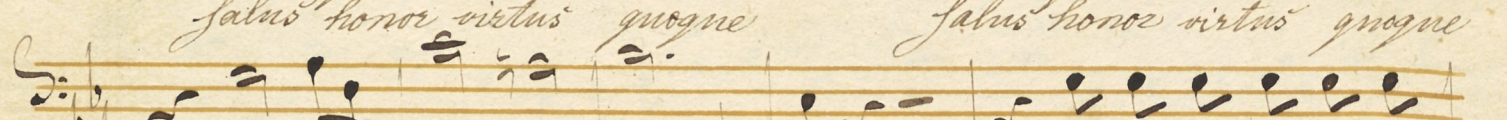
sensu-um defectu-i. Tan-tum ergo Sa-cra-mentum
compar fit laudati-o. Ge-ni-tori geni-togne



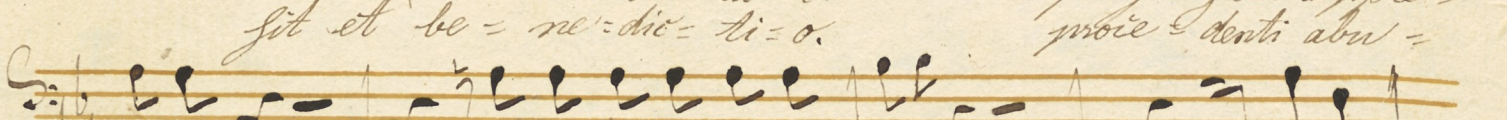
vene-remur cer-nu-i vene-remur cer-nu-i
laus et ju-bi-la-ti-o laus et ju-bi-la-ti-o



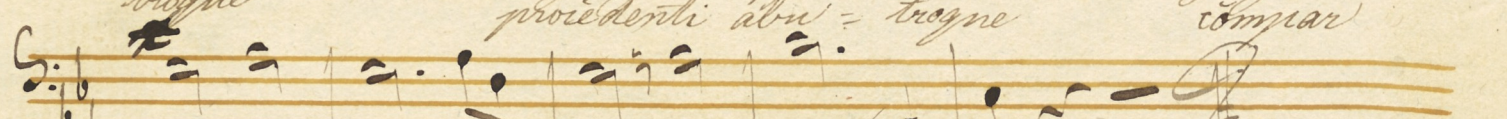
et antiquum docu-mentum et antiquum do-cu-mentum
salus honor virtus quoque salus honor virtus quoque



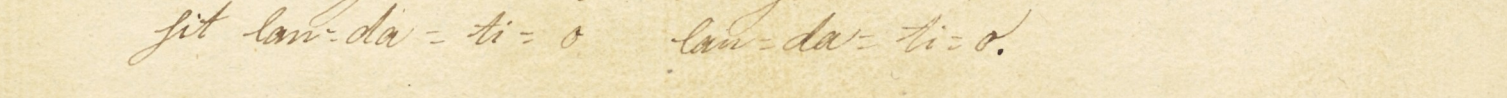
no-vo ce-dat ri-tu-i. praestet fides symple-mentum
fit et be-ne-dic-ti-o. proe-denti abu-trogne



mentum sensu
trogne compar



um de-fec-tu-i de-fec-tu-i
fit lau-da-ti-o lau-da-ti-o



This image shows a page of handwritten musical notation on aged paper. The score is organized into ten staves, with the first two staves of each system connected by a brace on the left. The notation includes various musical symbols such as notes, rests, beams, and slurs. The first system (staves 1-2) begins with a treble clef and a key signature of one sharp (F#). The second system (staves 3-4) continues the piece with similar notation. The third system (staves 5-6) features a treble clef and a key signature of one sharp. The fourth system (staves 7-8) includes a dynamic marking 'p' (piano) above the staff. The fifth system (staves 9-10) concludes the piece with a double bar line and a final cadence. Below the main score, there are four additional empty staves.