



22 TRANSPORT IN KOMUNIKACIJE
TRANSPORT AND COMMUNICATIONS

št./No 29

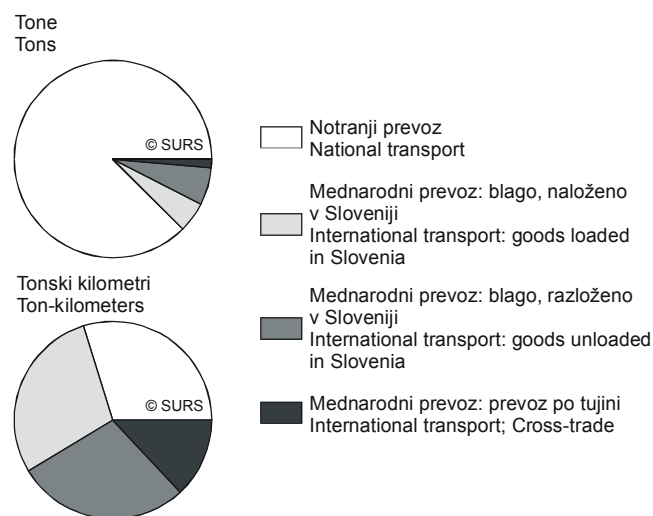
CESTNI BLAGOVNI PREVOZ, SLOVENIJA, 3. ČETRTLETJE 2004

TRANSPORT OF GOODS BY ROAD, SLOVENIA, 3rd QUARTER 2004

- Pri analizi kakovosti podatkov za obdobja 2002, 2003 in 1. četrletje 2004 smo ugotovili, da so bili le-ti zaradi sistematične napake, ki je nastala pri vnosu podatkov, podcenjeni. Pri ponovni obdelavi podatkov smo izločili tudi vsa tovorna vozila z nosilnostjo manj kot 1,5 tone. Zato v tej statistični informaciji objavljamo popravljene podatke od leta 2001, to je odkar poteka raziskovanje po novi metodologiji. Za napake se uporabnikom iskreno opravičujemo.
- The analysis of data quality for 2002, 2003 and 1st quarter 2004 showed that data are underestimated because of a systematic error that occurred at data entry. We have also excluded goods vehicles with capacity less than 1.5 tonne from all periods. In this publication the data are published again for the period for which the new methodology is used (since 2001). We would like to apologize to our users for the errors.
- Glavni kazalniki cestnega prevoza blaga, Slovenija, 3. četrletje 2004:
 - prepeljanega je bilo 18 112 tisoč ton blaga ali za 3 % več kot v enakem obdobju lani;
 - opravljenih je bilo 1 848,3 milijona tonskih kilometrov ali za 16 % več kot v enakem obdobju lani;
 - 89 % vseh tonskih kilometrov je bilo opravljenih v javnem prevozu, 11 % pa v prevozu za lastne potrebe.
- Main indicators of road goods transport, Slovenia, 3rd quarter 2004:
 - 18,112,000 tons were carried, which represents a 3% increase compared with the same period last year,
 - 1,848.3 million ton-kilometres were made, which represents a 16% increase compared with the same period last year,
 - 89% of all ton-kilometres were made in transport for hire or reward, while 11% were made in transport for own account.

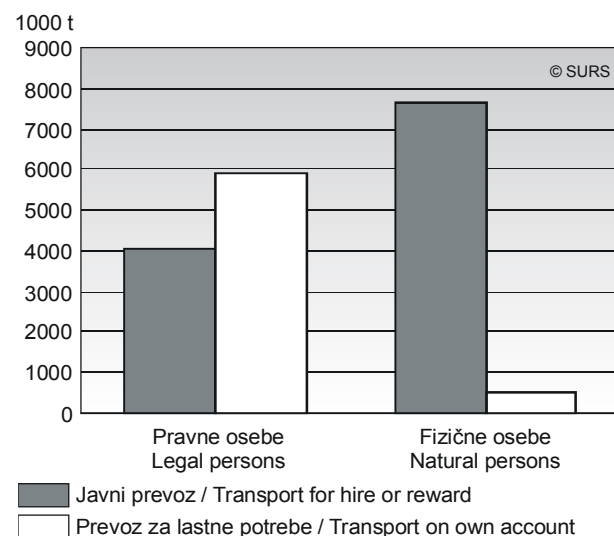
Slika 1: Cestni blagovni prevoz glede na usmeritev blaga, Slovenija, 3. četrletje 2004

Chart 1: Road transport of goods by direction, Slovenia, 3rd quarter 2004



Slika 2: Cestni blagovni prevoz glede na vrsto poslovnega subjekta in vrsto prevoza, Slovenija, 3. četrletje 2004

Chart 2: Road transport of goods by business subjects and type of transport, Slovenia, 3rd quarter 2004



1. Cestni blagovni prevoz (v 1000 tonah), Slovenija, 1. četrtnje 2001 - 3. četrtnje 2004
Road transport of goods (in 1000 tonnes), Slovenia, 1st quarter 2001 - 3rd quarter 2004

1000 t

	SKUPAJ TOTAL	Notranji prevoz National transport	Mednarodni prevoz International transport				
			skupaj total	blago, naloženo v Sloveniji goods loaded in Slovenia	blago, razloženo v Sloveniji goods unloaded in Slovenia	prevoz po tujini Cross-trade	
2001							2001
1. četrtnje	9498	8045	1453	683	646	(124)	1 st quarter
2. "	(12823)	(11586)	1237	522	597	(118)	2 nd "
3. "	15645	14126	1519	(691)	733	(95)	3 rd "
4. "	10957	9853	1104	510	(478)	(116)	4 th "
2002							2002
1. četrtnje	(12087)	(10621)	1466	626	660	(180)	1 st quarter
2. "	15151	13569	1582	675	673	(234)	2 nd "
3. "	15003	13557	1446	651	601	(194)	3 rd "
4. "	14322	12571	1751	(765)	842	(145)	4 th "
2003							2003
1. četrtnje	(13041)	(11569)	1473	656	593	(224)	1 st quarter
2. "	15081	(13444)	1637	(734)	760	(143)	2 nd "
3. "	17529	15785	1744	(780)	753	(211)	3 rd "
4. "	16552	(14759)	1793	739	834	(220)	4 th "
2004							2004
1. četrtnje	12441	10656	1786	714	754	(318)	1 st quarter
2. "	16234	14205	2029	820	944	(265)	2 nd "
3. "	18112	15866	2246	905	(1068)	(273)	3 rd "

Indeksi - isto četrtnje predhodnega leta = 100
Indices - the same quarter of the previous year = 100

2002							2002
1. četrtnje	127,3	132,0	100,9	91,7	102,3	144,4	1 st quarter
2. "	118,2	117,1	127,9	129,4	112,7	198,1	2 nd "
3. "	95,9	96,0	95,2	94,3	82,0	204,0	3 rd "
4. "	130,7	127,6	158,6	149,8	176,2	124,9	4 th "
2003							2003
1. četrtnje	107,9	108,9	100,4	104,7	89,8	124,6	1 st quarter
2. "	99,5	99,1	103,5	108,8	112,9	61,1	2 nd "
3. "	116,8	116,4	120,6	119,9	125,2	108,9	3 rd "
4. "	115,6	117,4	102,4	96,6	99,1	151,8	4 th "
2004							2004
1. četrtnje	95,4	92,1	121,3	108,9	127,2	141,9	1 st quarter
2. "	107,6	105,7	123,9	111,8	124,1	185,2	2 nd "
3. "	103,3	100,5	128,8	116,0	141,8	129,3	3 rd "

() Manj natančna ocena / Less accurate estimate: 0,10 <= CV < 0,20.

(()) Nenatančna ocena / Inaccurate estimate: 0,20 <= CV < 0,30.



2. Cestni blagovni prevoz (v mio tkm), Slovenija, 1. četrletje 2001 - 3. četrletje 2004
Road transport of goods (in mio tkm), Slovenia, 1st quarter 2001 - 3rd quarter 2004

mio tkm

	SKUPAJ TOTAL	Notranji prevoz National transport	Mednarodni prevoz International transport				prevoz po tujini Cross-trade	
			skupaj total	blago, naloženo v Sloveniji goods loaded in Slovenia	blago, razloženo v Sloveniji goods unloaded in Slovenia			
2001								2001
1. četrletje	1577,1	357,2	1219,8	529,7	495,0	(195,1)		1 st quarter
2. "	1317,0	397,1	919,9	(387,8)	407,9	(124,2)		2 nd "
3. "	1448,3	473,5	974,8	435,3	431,1	((108,4))		3 rd "
4. "	1120,4	356,2	764,2	346,8	297,3	((120,1))		4 th "
2002								2002
1. četrletje	1421,4	421,7	999,7	404,9	440,8	(154,0)		1 st quarter
2. "	1521,3	472,8	1048,5	425,4	422,5	(200,6)		2 nd "
3. "	1409,0	426,6	982,4	439,5	363,8	(179,1)		3 rd "
4. "	1568,2	479,6	1088,6	464,1	459,2	(165,2)		4 th "
2003								2003
1. četrletje	1370,5	371,9	998,6	439,2	414,1	(145,3)		1 st quarter
2. "	1521,5	478,0	1043,4	441,0	454,0	(148,4)		2 nd "
3. "	1599,1	491,9	1107,2	453,3	471,5	(182,4)		3 rd "
4. "	1813,8	511,0	1302,7	523,8	517,2	(261,7)		4 th "
2004								2004
1. četrletje	1868,6	473,8	1394,8	512,6	544,7	(337,5)		1 st quarter
2. "	2059,0	545,1	1513,9	619,9	628,3	(265,7)		2 nd "
3. "	1848,3	554,6	1293,7	528,7	525,0	(240,1)		3 rd "

Indeksi - isto četrletje predhodnega leta = 100
Indices - the same quarter of the previous year = 100

2002								2002
1. četrletje	90,1	118,1	82,0	76,4	89,1	78,9		1 st quarter
2. "	115,5	119,1	114,0	109,7	103,6	161,5		2 nd "
3. "	97,3	90,1	100,8	101,0	84,4	165,2		3 rd "
4. "	140,0	134,7	142,4	133,8	154,5	137,6		4 th "
2003								2003
1. četrletje	96,4	88,2	99,9	108,5	93,9	94,4		1 st quarter
2. "	100,0	101,1	99,5	103,7	107,5	74,0		2 nd "
3. "	113,5	115,3	112,7	103,1	129,6	101,9		3 rd "
4. "	115,7	106,6	119,7	112,9	112,6	158,4		4 th "
2004								2004
1. četrletje	136,3	127,4	139,7	116,7	131,6	232,3		1 st quarter
2. "	135,3	114,0	145,1	140,6	138,4	179,0		2 nd "
3. "	115,6	112,7	116,8	116,6	111,3	131,6		3 rd "

() Manj natančna ocena / Less accurate estimate: $0,10 \leq CV < 0,20$.
(()) Nenatančna ocena / Inaccurate estimate: $0,20 \leq CV < 0,30$.

3 Cestni blagovni prevoz glede na vrsto poslovnega subjekta in na vrsto prevoza, Slovenija, 1. četrletje 2001 – 3. četrletje 2004
 Road transport of goods by type of business subjects and type of transport, Slovenia, 1st quarter 2001– 3rd quarter 2004

	Skupaj / Total			Pravne osebe / Legal persons			Fizične osebe / Natural persons			
	skupaj total	javni prevoz transport for hire or reward	prevoz za lastne potrebe transport on own account	skupaj total	javni prevoz transport for hire or reward	prevoz za lastne potrebe transport on own account	skupaj total	javni prevoz transport for hire or reward	prevoz za lastne potrebe transport on own account	

1000 t

2001										2001
1. četrletje	9498	4900	(4598)	(5774)	(1805)	(3969)	3724	(3095)	((629))	1 st quarter
2. "	(12823)	5658	(7165)	(8495)	(1909)	(6586)	4328	(3749)	((579))	2 nd "
3. "	15645	8180	(7465)	9232	(2400)	(6832)	6413	5781	(633)	3 rd "
4. "	10957	6820	(4137)	(6835)	(3074)	(3760)	4122	3745	((377))	4 th "
2002										2002
1. četrletje	(12087)	(7869)	(4218)	(6597)	(3200)	(3397)	((5490))	((4669))	.	1 st quarter
2. "	15151	(10438)	(4713)	8048	(3725)	(4323)	(7103)	(6713)	((390))	2 nd "
3. "	15003	8184	(6820)	(9135)	(2975)	(6160)	(5868)	(5208)	.	3 rd "
4. "	14322	8951	(5371)	7711	(2941)	(4770)	(6611)	(6010)	((601))	4 th "
2003										2003
1. četrletje	(13041)	(7103)	(5939)	(7730)	(2312)	((5419))	(5311)	(4791)	.	1 st quarter
2. "	15081	10291	((4790))	(7383)	(3057)	((4326))	(7698)	(7233)	(464)	2 nd "
3. "	17529	9682	(7847)	(10667)	(3383)	(7284)	(6862)	(6299)	((563))	3 rd "
4. "	16552	11264	((5289))	(8846)	(4263)	((4583))	(7706)	(7000)	((706))	4 th "
2004										2004
1. četrletje	12441	8663	(3778)	(7851)	(4387)	(3464)	4591	(4276)	.	1 st quarter
2. "	16234	9584	(6650)	8965	(3333)	(5632)	7269	6250	((1019))	2 nd "
3. "	18112	11695	(6416)	9931	(4025)	(5906)	8181	7671	((510))	3 rd "

mio tkm

2001										2001
1. četrletje	1577,1	1381,2	(195,9)	873,0	716,1	(156,9)	704,1	665,1	.	1 st quarter
2. "	1317,0	1101,5	(215,5)	701,6	(532,8)	(168,9)	615,4	568,7	.	2 nd "
3. "	1448,3	1233,3	(215,0)	727,1	556,3	(170,8)	721,1	677,0	((44,2))	3 rd "
4. "	1120,4	984,4	(136,0)	615,8	512,2	(103,6)	504,6	472,2	.	4 th "
2002										2002
1. četrletje	1421,4	1258,8	(162,6)	736,4	597,1	(139,2)	685,0	661,6	((23,4))	1 st quarter
2. "	1521,3	1387,3	(133,9)	824,5	727,4	(97,1)	696,8	659,9	.	2 nd "
3. "	1409,0	1269,3	(139,7)	798,0	686,3	(111,7)	611,0	582,9	.	3 rd "
4. "	1568,2	1379,6	(188,6)	874,6	715,4	(159,2)	693,5	664,2	((29,3))	4 th "
2003										2003
1. četrletje	1370,5	1167,7	(202,8)	653,0	495,1	(157,8)	717,5	672,6	.	1 st quarter
2. "	1521,5	1307,8	(213,6)	714,9	575,2	(139,7)	806,6	732,7	((73,9))	2 nd "
3. "	1599,1	1382,5	(216,6)	823,9	651,9	(172,0)	775,1	730,6	.	3 rd "
4. "	1813,8	1619,5	(194,2)	929,6	784,9	(144,7)	884,1	834,6	((49,5))	4 th "
2004										2004
1. četrletje	1868,6	1708,2	(160,4)	968,4	827,7	(140,7)	900,3	880,5	.	1 st quarter
2. "	2059,0	1824,3	(234,6)	1037,5	876,3	(161,2)	1021,5	948,1	((73,4))	2 nd "
3. "	1848,3	1642,9	(205,4)	968,2	780,5	(187,8)	880,1	862,5	((17,6))	3 rd "

() Manj natančna ocena / Less accurate estimate: 0,10 <= CV < 0,20.

(()) Nenatančna ocena / Inaccurate estimate: 0,20 <= CV < 0,30.

. Zelo nenatančna ocena, vendar različna od nič / Not zero but extremely inaccurate estimate: CV => 30



4. Cestni blagovni prevoz po usmeritvi blaga glede na vrsto poslovnega subjekta in na vrsto prevoza, Slovenija, 3. četrletje 2004
Road transport of goods by direction of goods, type of business subjects and type of transport, Slovenia, 3rd quarter 2004

	Skupaj Total	Javni prevoz Transport for hire or reward	Prevoz za lastne potrebe Transport on own account	Pravne osebe Legal persons	Fizične osebe Natural persons	
1000 t						
SKUPAJ	18112	11695	(6416)	9931	8181	TOTAL
Notranji prevoz	15866	9597	(6270)	8933	(6934)	National transport
Mednarodni prevoz	2246	2099	((147))	998	1247	International transport
mio tkm						
SKUPAJ	1848,3	1642,9	(205,4)	968,2	880,1	TOTAL
Notranji prevoz	554,6	403,3	151,3	296,2	258,3	National transport
Mednarodni prevoz	1293,7	1239,6	((54,1))	672,0	621,8	International transport

() Manj natančna ocena / Less accurate estimate: 0,10 <= CV < 0,20.
(()) Nenatančna ocena / Inaccurate estimate: 0,20 <= CV < 0,30.

5. Število vozil, prepeljano blago, opravljeni tonski kilometri in prevožena razdalja glede na vrsto poslovnega subjekta in nosilnost vozil, Slovenija, 3. četrletje 2004

Number of vehicles, goods carried, tonne kilometres made and distance travelled by type of business subjects and load capacity, Slovenia, 3rd quarter 2004

	Število vozil Number of vehicles	Prepeljano blago Goods carried 1000 t	Opravljeni tonski kilometri Tonne kilometers made mio tkm	Prevožena razdalja Distance travelled km	
Pravne osebe / Legal persons					
Vsa vozila	13629	9931	968,2	98500	All vehicles
nosilnost:					load capacity:
1,5 - 5 t	6387	(383)	(46,3)	(36681)	1,5 - 5 t
5 - 10 t	2101	(1112)	((61,1))	(10909)	5 - 10 t
10 t +	2721	(6375)	(285,9)	21558	10 t +
vlačilci	2420	(2060)	574,9	29352	road tractors
Fizične osebe / Natural persons					
Vsa vozila	12580	8181	880,1	79353	All vehicles
nosilnost:					load capacity:
1,5 - 5 t	5065	(325)	(38,5)	(22343)	1,5 - 5 t
5 - 10 t	2401	(871)	(77,1)	(12847)	5 - 10 t
10 t +	2724	(4746)	209,1	15087	10 t +
vlačilci	2390	(2239)	555,4	29077	road tractors

() Manj natančna ocena / Less accurate estimate: 0,10 <= CV < 0,20.
(()) Nenatančna ocena / Inaccurate estimate: 0,20 <= CV < 0,30.

OPOMBE

Zaradi zaokroževanja se seštevki vedno ne ujemajo.
Preostali podatki o cestnem prevozu blaga, pridobljeni s tem raziskovanjem, so dostopni na Statističnem uradu Republike Slovenije.

REMARKS

The figures are rounded, so the sums might not be totally correct.
Additional data from the survey on road transport of goods are available at the Statistical Office of the Republic of Slovenia.

STATISTIČNA ZNAMENJA IN OKRAJŠAVE

+ in več
t tone
mio. tkm milijon tonskih kilometrov

STATISTICAL SIGNS AND ABBREVIATIONS

+ and more
t tons
mio. tkm million ton-kilometres



METODOLOŠKA POJASNILA

Podatke o cestnem blagovnem prevozu zbiramo z anketo, ki temelji na slučajnem vzorcu. Objavljene ocene pa so preračunane na celotno populacijo tovornih vozil, registriranih v Republiki Sloveniji.

Namen statističnega raziskovanja

je zbrati vsako četrletje osnovne podatke o prepeljanem blagu (o masi, vrsti in obliki tovora / pakiranja in njegovi naravi – ali spada med nevarne snovi), o prevoženih kilometrih (polnih in praznih), o stopnji naloženosti na poti in o vrsti prevoza.

Enote opazovanja

so registrirana tovorna motorna vozila z vsaj 1,5 tone nosilnosti, kar predstavlja okoli 45 % vseh tovornih motornih vozil, registriranih v Republiki Sloveniji. Ta vozila opravijo okoli 98 % cestnega blagovnega prevoza vseh tovornih motornih vozil, registriranih v Republiki Sloveniji.

Poročevalske enote

so poslovni subjekti (pravne in fizične osebe), ki imajo v lasti, najemu ali upravljanju registrirana tovorna motorna vozila z vsaj 1,5 tone nosilnosti, in sicer v **javnem prevozu** in **prevozu za lastne potrebe**.

Zajetje

Osnova za izdelavo četrletnega vzorca je Register motornih vozil, ki ga vodi Ministrstvo za notranje zadeve. Za vsako četrletje se pridobi stanje o celotni populaciji registriranih tovornih motornih vozil na področju Slovenije. Dobljene podatke primerjamo in uskladimo s Poslovnim registrom Slovenije in jim dodelimo šifro dejavnosti po standardni klasifikaciji dejavnosti (SKD).

Merila natančnosti

- ocene s koeficientom variacije, manjšim od 0,10 ($CV \leq 0,10$), so objavljene brez omejitev;
- ocene s koeficientom variacije od 0,10 do 0,20 ($0,10 < CV \leq 0,20$) so objavljene v enojnih oklepajih;
- ocene s koeficientom variacije od 0,20 do 0,30 ($0,20 < CV \leq 0,30$) so objavljene v dvojnih oklepajih;
- ocene s koeficientom variacije, večjim od 0,30 ($CV > 0,30$), niso objavljene, nadomeščene so s piko.

Uporabnik ocen (podatkov) iz ankete naj bi pri uporabi podatkov upošteval, da so ocene, objavljene brez omejitev, dovolj zanesljive, tiste v oklepajih pa manj.

Definicije in druga pojasnila

Tovorno cestno motorno vozilo

je vsako posamezno cestno motorno vozilo, ki je namenjeno za prevoz blaga (tovornjak), ali kombinacije cestnih vozil, oblikovanih za prevoz blaga (npr. tovornjak s priklopnikom oz. priklopniki ali cestni vlačilec s polpriklopnikom in s priklopnikom ali brez njiju).

Cestno vlečno vozilo (vlačilec)

je cestno motorno vozilo, ki je namenjeno izključno ali pretežno za vleko drugih cestnih vozil, ki nimajo svoje lastne pogonske sile (večinoma polpriklopnikov).

METHODOLOGICAL EXPLANATIONS

Data on road goods transport are obtained with a survey based on a random sample. Estimates published in this report are calculated for the whole population of goods vehicles registered in the Republic of Slovenia.

The purpose of the statistical survey

Is to obtain every quarter basic data on goods carried (weight, type, type of cargo / packing and whether goods are dangerous), kilometres travelled (loaded and empty), degree of loading and type of transport.

Observation units

are registered goods motor vehicles with at least 1.5 tonne of load capacity which stand for 45% of all goods motor road vehicles registered in Republic of Slovenia and which performs around 98% of road goods transport performed by all goods motor road vehicles registered in Republic of Slovenia.

Reporting units

are business subjects (legal and natural persons) owning, leasing or managing registered goods motor vehicles with at least 1.5 tonne of load capacity both in **transport for hire or reward** and in **transport on own account**.

Coverage

The basis for preparing the quarterly sample is the Register of Motor Vehicles, kept by the Ministry of the Interior. For every quarter current coverage, which represent the whole population of registered goods motor vehicles in Slovenia, is used. The collected data are linked to Business Register of Slovenia data and assigned a code of activity (according to the national Standard Classification of Activities).

Method of data collection

- estimates with the coefficient of variation under 0.10 ($CV \leq 0.10$) are published without limitations;
- estimates with the coefficient of variation between 0.10 and 0.20 ($0.10 < CV \leq 0.20$) are published in single parentheses;
- estimates with the coefficient of variation between 0.20 and 0.30 ($0.20 < CV \leq 0.30$) are published in double parentheses;
- estimates with the coefficient of variation over 0.30 ($CV > 0.30$) are not published, but each one is substituted by a dot.

The user of survey estimates (data) should take into account that estimates published without limitations are sufficiently reliable, while those in parentheses are less reliable.

Definitions and other explanations

Goods road motor vehicle

Any single road motor vehicle designed to carry goods (lorry), or any coupled combination of road vehicles designed to carry goods, (i.e. lorry with trailer(s), or road tractor with semi-trailer and with or without trailer).

Road tractor

Road motor vehicle designed, exclusively or primarily, to haul other road vehicles which are not power-driven (mainly semi-trailers).



Nosilnost

je največja dovoljena masa blaga, ki jo določi pristojni organ države ob registraciji vozila.

Javni prevoz

je prevoz blaga v komercialne namene, za katerega se relacija, cena prevoza in drugi prevozni pogoji določijo s pogodbo med prevoznikom in naročnikom prevoza.

Prevoz za lastne potrebe

je prevoz, ki ga fizična ali pravna oseba opravlja za zadovoljevanje potreb pri izvajanju svoje dejavnosti oziroma nalog s svojega delovnega področja.

Notranji prevoz

je prevoz blaga med dvema krajema (krajem nalaganja in krajem razlaganja), ki se nahajata v isti državi (Sloveniji). Lahko vključuje tudi tranzit skozi drugo državo.

Mednarodni prevoz: blago, naloženo v Sloveniji

je prevoz blaga med dvema krajema, pri katerem je kraj nalaganja v državi, ki poroča (Slovenija), kraj razlaganja pa v drugi državi.

Mednarodni prevoz: blago, razloženo v Sloveniji

je prevoz blaga med dvema krajema, pri katerem je kraj nalaganja v drugi državi, kraj razlaganja pa v državi, ki poroča (Slovenija).

Mednarodni prevoz: prevoz po tujini

je prevoz blaga med dvema krajema, pri katerem sta tako kraj nalaganja kot kraj razlaganja v drugi državi oziroma drugih državah.

Objavljanje podatkov

Mesečno:

Statistične informacije, Transport

Nekateri pomembnejši podatki Republike Slovenije

Mesečni statistični pregled

Letno:

Statistični letopis

Rezultati raziskovanj, Letni pregled transporta in komunikacij

KOMENTAR

Po ponovni obdelavi podatkov smo ugotovili, da so bili podatki o prepeljanih tonah v obdobju od 1. četrtega 2002 do 1. četrtega 2004 podcenjeni za 10 do 30 %, o opravljenih tonskih kilometrih pa za 5 do 35 %.

Z letom 2004 smo iz raziskave izločili vozila z nosilnostjo pod 1,5 tone, saj smo ugotovili, da ta vozila, ki sicer predstavljajo kar 55 % vseh cestnih tovornih motornih vozil prepeljejo le okoli 2 % blaga. Ker smo prag zvišali tudi za obdobja pred letom 2004, se je obseg prevoza v letih 2001 do 2003 zmanjšal v primerjavi s prejšnjimi rezultati (prag 1 tona).

Load capacity

Maximum weight of goods declared permissible by the competent authority of the country of registration of the vehicle.

Transport for hire or reward

Transport of goods for commercial purpose, where the distance, the price and the other terms of transport are defined by contract between hauler and consumer of transport services.

Transport on own account

Transport that a natural or legal person performs for its needs in carrying out its activity or tasks from its field of work.

National transport

Road transport of goods between two places (a place of loading and a place of unloading) located in the same country (Slovenia). It may involve transit through a second country.

International transport: goods loaded in Slovenia

Transport of goods between two places, where the place of loading is in Slovenia and the place of unloading is in a foreign country.

International transport: goods unloaded in Slovenia

Transport of goods between two places, where the place of loading is in a foreign country and the place of unloading is in Slovenia.

International transport: Cross-trade

Transport of goods between two places, where the place of loading and unloading are in the foreign country(s).

Publishing

Monthly:

Rapid Reports. Transport

Some Important Data on the Republic of Slovenia

Monthly Statistical Review

Yearly:

Statistical Yearbook

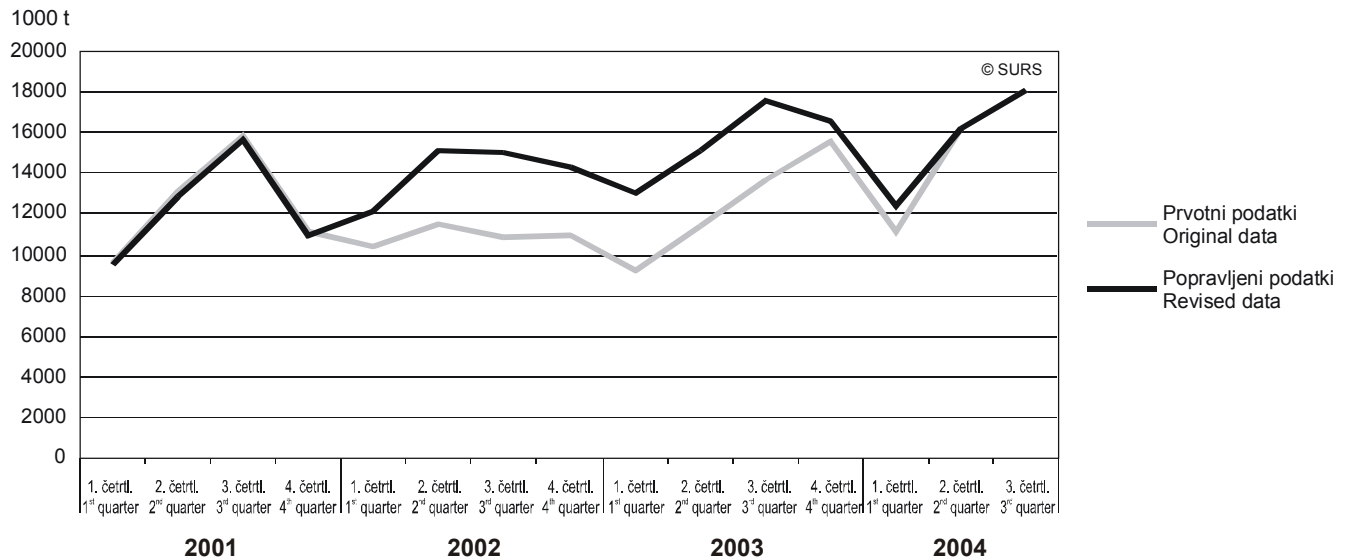
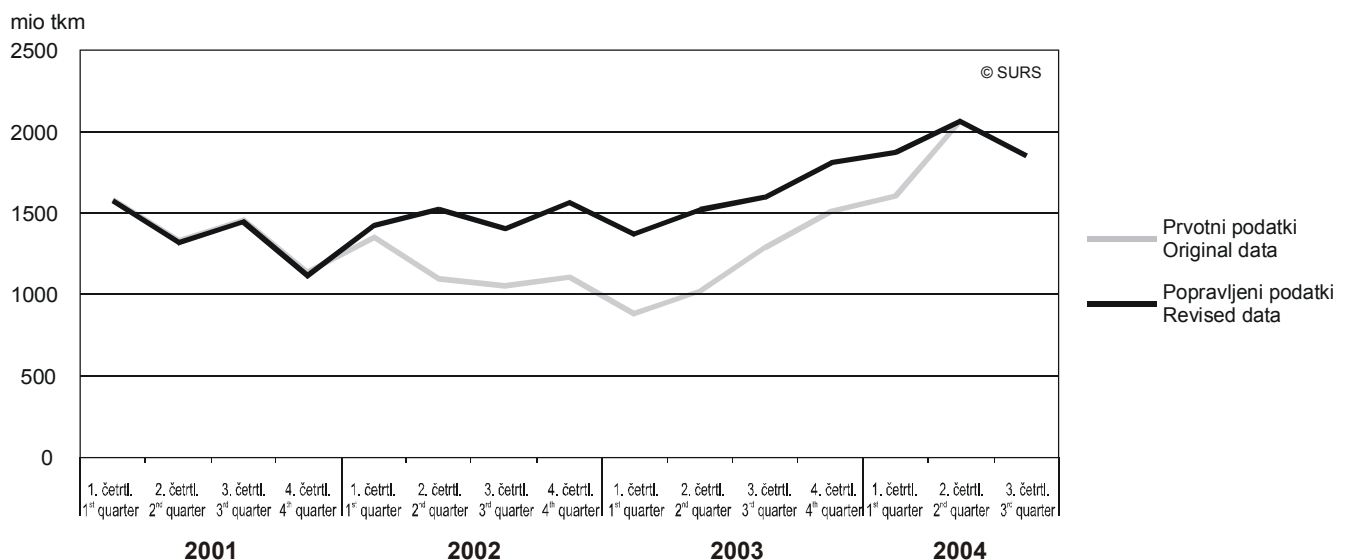
Results of Surveys. Annual Review of Transport and Communication

COMMENT

After the data have been processed again, we have established, that data have been underestimated in periods from 1st quarter 2001 till 1st quarter 2004: namely tonnes carried by 10 to 30% and tonne-kilometres performed by 5 to 35%.

Starting with the year 2004 we have eliminated from the research all vehicles with the load capacity of less than 1.5 tonnes. Because of the raised threshold, the results in this report are smaller for the year 2001 - 2003 compared with previous results where threshold was set to 1 tonne.



Slika 3: Primerjava med prvotnimi in popravljenimi podatki za prepeljane tone v cestnem blagovnem prevozu, Slovenija, 1. četrletje 2001 - 3. četrletje 2004Chart 3: Comparison between original and revised data for tons carried in road transport of goods, Slovenia, 1st quarter 2001 - 3rd quarter 2004**Slika 4: Primerjava med prvotnimi in popravljenimi podatki za opravljene tonske kilometre v cestnem blagovnem prevozu, Slovenija, 1. četrletje 2001 - 3. četrletje 2004**Chart 4: Comparison between original and revised data for ton-kilometres performed in road transport of goods, Slovenia, 1st quarter 2001 - 3rd quarter 2004

Obseg prevoza, izražen v tonskih kilometrih, se je v 3. četrletju 2004 povečal za 16 % v primerjavi s 3. četrletjem 2003. V enaki primerjavi se je količina prepeljanega blaga v tonah povečala za 3 %. Od začetka leta je bilo opravljenih 14 % več tonskih kilometrov in prepeljanih 2 % več ton v primerjavi z enakim obdobjem lani.

V Sloveniji registrirana vozila so v 3. četrletju 2004 največ blaga prepeljala v notranjem prevozu, in sicer 88 % celotne količine

The extent of transport expressed in tonne-kilometres increased in the 3rd quarter 2004 in comparison with the 3rd quarter 2003 by 16%. In the same comparison the quantity of goods carried increased by 3%. From the beginning of 2004 14% more tone-kilometres were made and 2% more goods were carried compared with the same period last year.

In the 3rd quarter 2004 the greatest share of tonnes carried by vehicles registered in Slovenia was performed in national transport, namely 88%.

prepeljanega blaga. Iz Slovenije v tujino so prepeljali 5 % vsega blaga, iz tujine v Slovenijo pa 6 %. Po tujini so prepeljala 2 % celotne količine prepeljanega blaga. Delež tonskih kilometrov v notranjem prevozu je znašal 30 %; deleži tonskih kilometrov, opravljenih v mednarodnem prevozu, pa so znašali: s prevozom iz Slovenije 29 %, v Slovenijo 28 %, po tujini pa 13 %.

Pravne osebe so prepeljale 55 % vsega blaga, fizične osebe pa 45 %. V javnem prevozu je bilo prepeljanega 65 %, v prevozu za lastne potrebe pa 35 % vsega blaga.

5% of all goods was transported from Slovenia and 6% into Slovenia. 2% of goods were carried in cross-trade. The share of tonne-kilometres in national transport was 30%. In international transport 29% of all ton-kilometres were transported from Slovenia and 28% into Slovenia. 13% of tonne-kilometres were made in cross-trade.

Legal persons carried 55% and natural persons 45% of all goods. In transport for hire or reward 65% of goods was carried and in transport for own account 35%.

Sestavil / Prepared by: Vojin Šegan

Izdaja, založba in tisk Statistični urad Republike Slovenije, Ljubljana, Vožarski pot 12 - **Uporaba in objava podatkov dovoljena le z navedbo vira** - Odgovarja generalna direktorica mag. Irena Krizman - Urednica zbirke Statistične informacije Marina Urbas - Slovensko besedilo jezikovno uredila Ivanka Zobec - Angleško besedilo jezikovno uredil Boris Panič - Naklada 150 izvodov - ISSN zbirke Statistične informacije 1408-192X - ISSN podzbirke Transport in komunikacije 1580-8416 - Informacije daje Informacijsko središče, tel.: (01) 241 51 04 - El. pošta: info.stat@gov.si - <http://www.stat.si>.

Edited, published and printed by the Statistical Office of the Republic of Slovenia, Ljubljana, Vožarski pot 12 - **These data can be used provided the source is acknowledged** - Director-General Irena Krizman - Rapid Reports editor Marina Urbas - Slovene language editor Ivanka Zobec - English language editor Boris Panič - Total print run 150 copies - ISSN of Rapid Reports 1408-192X - ISSN of subcollection Transport and communications 1580-8416 - Information is given by the Information Centre of the Statistical Office of the Republic of Slovenia, tel.: +386 1 241 51 04 - E-mail: info.stat@gov.si - <http://www.stat.si>.