

RAMOVŠ, P.

Thème donné (nb., km. ans.)
rkr.

TRIMOZ RAMOVŠ

THÈME DONNÉ

LA MONTAGNE EN ANCIENNE

la montagne en ancien

PRIMOŽ RAMOVŠ

THÈME DONNÉ

ZA POZAVNO IN ANSAMBEL

*Ansamblu „Glasbo Ostenc“
s svojimi 10-letniki*

PRIMO RAMON

THEME DOMME

SA POSANO W FVZABRE

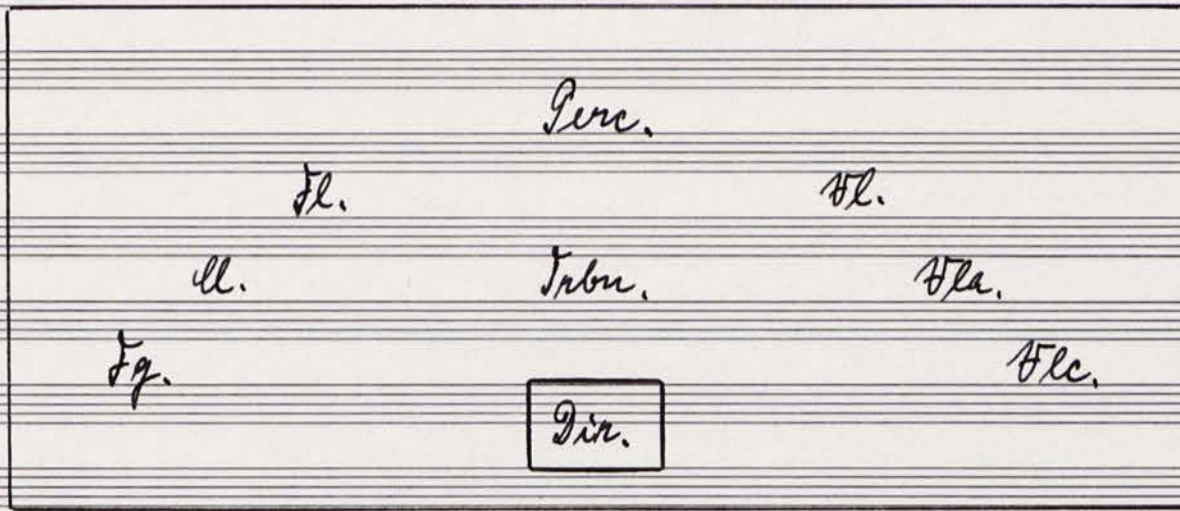
Journal des Étudiants
de la Faculté de Droit



MD 1753 / 2000

19.02.2000

Postavitev na odru:



Ordini del trombone: S - straight

C - cup

P - plunger

Ps - plunger con straight

W - wawan

Percussione: 3 bongos, 5 temple-blocks, 2 kane, tantam, frusta, raganella, fischietto, wind-chime

2a

$\text{♩} = 60$

Flauto (anche Flauto alto)

Clarinetto in Bb

Fagotto

Trombone solista

Percussione

Violino

Viola

Violoncello

Handwritten musical score for the first system, featuring four staves:

- Tuba:** Contains a few notes with a slur and a dynamic marking of *mp*.
- Fl.** (Flute): Starts with a key signature change to one flat and a dynamic marking of *pp*.
- Clar.** (Clarinet): Starts with a key signature change to two sharps and a dynamic marking of *pp*, with the instruction *sul tasto* written above.
- Bc.** (Bassoon): Contains notes with slurs and accents.

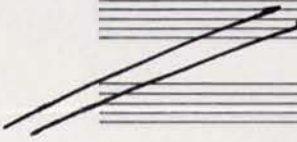


3a

Handwritten musical score for the second system, featuring six staves:

- Fl.** (Flute): Starts with a circled red '1' and contains a melodic line with many accidentals.
- Cl.** (Clarinet): Contains a melodic line with many accidentals.
- Fg.** (Fagotto): Contains a melodic line with many accidentals.
- Tuba:** Contains notes with a box labeled *via S* and a dynamic marking of *ff*.
- Fl.** (Flute): Contains notes with a dynamic marking of *ff*.
- Clar.** (Clarinet): Contains notes with the instruction *loco* and a dynamic marking of *ff*.
- Bc.** (Bassoon): Contains notes with a dynamic marking of *ff*.

Inbu.



4a

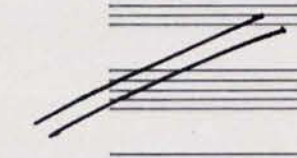
②

ca 5"

Inbu.

Handwritten musical score for the first system, featuring five staves:

- Tuba:** Starts with a note marked *ca 9"* and *molto lento*. The staff contains a long note with a slur and a dynamic marking *p*. This is followed by a measure with a dynamic marking *ff* and a note with a slur. The system ends with a measure containing several notes with slurs and a dynamic marking *ff*.
- Fl.** A long horizontal line with an arrow pointing right, labeled *via sord.* at the end.
- Fla.** A long horizontal line with an arrow pointing right.
- Trc.** A long horizontal line with an arrow pointing right, labeled *via sord.* at the end. The system concludes with a measure containing notes marked *pizz.*, *ff*, and a dynamic marking *ff*.



Handwritten musical score for the second system, featuring five staves:

- Fl.** A long horizontal line with an arrow pointing right, labeled *ca 1"* and a circled **3** above it. A box contains a note with a dynamic marking *pp* and a measure marker $\frac{1}{4}$.
- Cl.** A long horizontal line with an arrow pointing right, labeled *ca 1"* and a circled **3** above it. A box contains a note with a dynamic marking *pp* and a measure marker $\frac{1}{4}$.
- Fg.** A long horizontal line with an arrow pointing right, labeled *ca 1"* and a circled **3** above it. A box contains a note with a dynamic marking *pp* and a measure marker $\frac{1}{4}$.
- Tuba:** Starts with a series of notes marked *p marc.* followed by a note with a slur and a dynamic marking *ff*. The system ends with a measure containing notes with slurs and a dynamic marking *ff*.
- Fl.** A long horizontal line with an arrow pointing right, labeled *loco* and a dynamic marking *pp*.
- Fla.** A long horizontal line with an arrow pointing right, labeled *via sord.* and a dynamic marking *pp*.
- Trc.** A long horizontal line with an arrow pointing right, labeled *arco* and a dynamic marking *pp*.

Additional markings include *ca 3"* and *2-3"* above the woodwind staves.

Fl. *ff* *dim.* *pp*

Cl. *ff* *dim.* *pp*

Fg. *ff*

Trbn. *ff*

J. Bl. *ff*

Dr. *ff*

Fla. *ff*

Vcl. *ff*

pizz. *b.e.* *ff*

pizz. *#e.* *ff*

mul. *p*

pp



Fl. *p*

Cl. *p*

Trbn. *p*

J. Bl. *p*

Vcl. *p*

5

pp

pp

pp

7

3-4"

Fl.

Cl.

Fg.

Trbn.

T. bl.

Hr.

Hra.

Hlc.

9a

ca 5"

7-8"

Fl.

Cl.

Fg.

Trbn.

Kane

Hr.

Hra.

Hlc.

Handwritten musical score for the first system, including parts for Trombone (Tbn.), Trumpet (T. bl.), Flute (Fl.), Clarinet (Cla.), and Bassoon (Fle.).

- Tbn.:** Starts with a box containing "via C".
- T. bl.:** Features a dynamic marking of *pp* and a handwritten note "Kane".
- Fl.:** Includes a treble clef, a key signature of one sharp (F#), and a time signature of 2/4.
- Cla.:** Includes a treble clef, a key signature of two sharps (F#, C#), and a time signature of 2/4.
- Fle.:** Includes a bass clef and a key signature of one sharp (F#).

Large handwritten annotations include a "2" with a dynamic marking of *f* and a "7" with a dynamic marking of *p*. The word "loco" is written above the Clarinet and Bassoon parts.



10 a

Handwritten musical score for the second system, including parts for Flute (Fl.), Trombone (Tbn.), Flute (Fl.), Clarinet (Cla.), and Bassoon (Fle.).

- Fl.:** Features a treble clef and a dynamic marking of *p*.
- Tbn.:** Includes a treble clef, a key signature of two sharps (F#, C#), and a dynamic marking of *mp* that transitions to *ff*. A large handwritten "A" is written to the left of the staff.
- Fl.:** Includes a treble clef, a key signature of one sharp (F#), and a dynamic marking of *p* with the word "loco" above it.
- Cla.:** Includes a treble clef and a key signature of two sharps (F#, C#).
- Fle.:** Includes a bass clef and a key signature of one sharp (F#).

Fl. *resc.*

Cl. *resc.*

Tuba *mf* *f*

Fl. *resc.*

Fl. *resc.*

Fl. *resc.*

Fl. *f* *ff* **9** *4-5"*

Cl. *f* *ff*

Tg. *f* *ff*

Tuba *sempre più presto* *via P*

Tg. *f* *ff*

Fl. *f* *ff*

Fl. *f* *ff*

Fl. *f* *ff*

Ma



Fl.

Cl.

Fg.

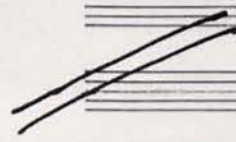
Trbn.

Bg.

Alc.

Alc.

Alc.



Fl.

Cl.

Fg.

Trbn.

Bg.

Alc.

Alc.

Alc.

Fl.

Cl.

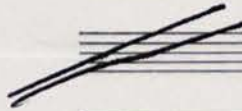
Fg.

Trbn.

Tr.

Alc.

Tlc.



13 a

Fl.

Cl.

Fg.

Trbn.

Tr.

Alc.

Tlc.

ca 7"

ff *Raganello*

ff

ff

Fl. *da*

Cl. *tu*

Fg. *ko*

Trbn. *2*

Fr. Lag.

Bl. *po*

Bla. *gi*

Btc. *ba*

Gingent: *re*

6-7"

MA ca 3"

2-3"

ca 4"

Fl.

Cl.

Trbn. *con Ps*

Kane *mf*

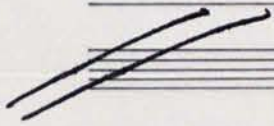
Bl. *sal pont.*

Bla. *sal pont.*

Btc. *sal pont.*

14a

Handwritten musical score for the first system, featuring staves for Flute (Fl.), Clarinet (Cl.), Bassoon (Fg.), Trombone (Tbn.), Trumpet (Tr.), Trombone (Tbn.), and Bassoon (Fg.). The notation includes various notes, rests, and dynamic markings such as *ppp*. The score is divided into three measures by vertical bar lines.



15a

12

Handwritten musical score for the second system, featuring staves for Flute (Fl.), Clarinet (Cl.), Bassoon (Fg.), Trombone (Tbn.), Horn (Horn), Trumpet (Tr.), Trombone (Tbn.), and Bassoon (Fg.). The notation includes notes, rests, and dynamic markings such as *p* and *ppp*. A large bracket labeled '3' spans across the Trombone and Horn staves. Two boxed musical passages are present, each labeled '(sul pont.)' and *ppp*, with arrows pointing to the right. The Trombone staff includes the instruction 'via Ps' in a box.

Handwritten musical score for the first system, featuring five staves:

- Staff 1 (Tuba):** Contains a melodic line with a *ppp* dynamic marking and a key signature of one sharp (F#).
- Staff 2 (Trumpet):** Features rhythmic notation with notes marked with a *(d)* and various rests.
- Staff 3 (Trumpet):** Similar to the second staff, with notes marked with a *(d)*.
- Staff 4 (Tuba):** Includes a rhythmic pattern with notes marked with a *(d)* and a *ppp* dynamic marking.
- Staff 5 (Tuba):** Continues the rhythmic notation with notes marked with a *(d)*.

The score includes various musical notations such as rests, notes, and dynamic markings.

16e

13

Handwritten musical score for the second system, featuring five staves:

- Staff 1 (Tuba):** Shows a melodic line with a *ppp* dynamic marking and a key signature of one sharp (F#).
- Staff 2 (Tuba):** Contains a large, stylized letter 'A' and a box containing a melodic line.
- Staff 3 (Tuba):** Features a box containing a melodic line and a key signature change to one sharp (F#).
- Staff 4 (Trumpet):** Includes rhythmic notation with notes marked with a *(d)* and a box containing a melodic line.
- Staff 5 (Tuba):** Shows rhythmic notation with notes marked with a *(d)* and a box containing a melodic line.

The score includes various musical notations such as rests, notes, and dynamic markings.

Fl. a tiro

ll.

Tuba

T. bl.

Fl.

Fla.

Trc.

Fl. a t.

ll.

Tuba

Fl.

Fla.

Trc.

Fl. a t. *ff*

Cl. *resc.* *f*

Trbn. *resc.* *f*

T. bl. *f*

Fl. *resc.* *f*

Bla. *resc.* *f*

Bcl. *resc.* *f*

Fl. a t. *pp*

Cl. *dim.* *pp*

Trbn. *dim.* *pp* *mp*

Fl. *dim.* *pp*

Bla. *dim.* *pp*

Bcl. *dim.* *pp*

Handwritten musical score for the first system, featuring five staves: Clarinet (Cl.), Trombone (Tbn.), Trumpet (T. H.), Flute (Fl.), and Bassoon (Bc.).

- Cl.:** Starts with a long line marked *dim.* and *ppp*. In the third measure, it has a melodic line starting with a 7-measure rest, marked *ppp*.
- Tbn.:** Features a box containing the text "via W".
- T. H.:** Starts with a melodic line marked *pp*. In the second measure, there is a *p* dynamic marking and a *Lantam.* (Lento) marking.
- Fl.:** Similar to the Clarinet, with a long line marked *dim.* and *ppp*.
- Bc.:** Similar to the Clarinet, with a long line marked *dim.* and *ppp*.



19 a

Handwritten musical score for the second system, featuring five staves: Flute (Fl.), Clarinet (Cl.), Trombone (Tbn.), Trumpet (T. H.), and Bassoon (Bc.).

- Fl.:** Marked with a circled "15" and "ca 3" above the first measure. It has a long line with a *loco* marking and a *ff* dynamic.
- Cl.:** Similar to the Flute, with a long line, *loco* marking, and *ff* dynamic.
- Tbn.:** Features a box containing the letter "C" in the third measure, with a *p* dynamic marking below it.
- T. H.:** Marked with "4-5" above the first measure. It has a long line with a *loco* marking and a *ff* dynamic.
- Bc.:** Marked with "5-6" above the first measure. It has a long line with a *loco* marking and a *ff* dynamic.

Handwritten musical score for the first system, featuring a vocal line and piano accompaniment.

Voice: The vocal line is written on a single staff. It begins with the word "voco" and a square box above the first measure. The melody consists of several notes, including a half note with a fermata, and ends with a half note. A dynamic marking of *p* is present at the end of the line.

Piano: The piano accompaniment is written on two staves (treble and bass clef). The right hand has a few notes in the first measure, and the left hand has a few notes in the first measure. A dynamic marking of *mp* is present in the second measure of both hands.



20 R

16

ca 4"

Handwritten musical score for the second system, featuring a tuba line, tam-tam, and piano accompaniment.

Tuba: The tuba line is written on a single staff. It begins with a key signature of two sharps (F# and C#) and a dynamic marking of *ff*. The melody is highly rhythmic and includes many accidentals. It ends with a double bar line and a fermata.

Tam-tam: The tam-tam part is written on a single staff. It begins with a key signature of two sharps and a dynamic marking of *p*. The notation consists of a series of notes with stems, and it ends with a double bar line and a fermata.

Piano: The piano accompaniment is written on three staves (treble, bass, and another bass clef). Each staff begins with a key signature of two sharps and a dynamic marking of *ff*. The notation consists of a series of notes with stems, and each staff ends with a double bar line and a fermata.

Fl. *ff*

Cl. *ff*

Trbn. *ff*

Alc. *ff*

Ala. *ff*

Alc. *ff*

Fl.

Cl.

Fg. *ff*

Trbn.

Tru. Lag. *ff*

Alc. *ff*

Ala. *ff*

Alc. *ff*

212

17

Handwritten musical score for the first system, featuring staves for Flute (Fl.), Clarinet (Cl.), Saxophone (Sg.), Trombone (Tbn.), Trumpet (Tr.), Horn (Hr.), and Double Bass (Db.).

- Fl.:** Staff with treble clef and key signature of one sharp (F#). A boxed-in melodic phrase is present, followed by the instruction *cresc.*
- Cl.:** Staff with treble clef and key signature of one sharp. A boxed-in melodic phrase is present, followed by the instruction *cresc.*
- Sg.:** Staff with treble clef and key signature of two sharps (F#, C#). A boxed-in melodic phrase is present, followed by the instruction *cresc.*
- Tbn.:** Staff with bass clef and key signature of two sharps. It contains complex rhythmic notation with accents and dynamic markings *p* and *ff*.
- Tr.:** Staff with treble clef and key signature of two sharps. The instruction *cresc.* is written below the staff.
- Hr.:** Staff with treble clef and key signature of two sharps. The instruction *cresc.* is written below the staff.
- Db.:** Staff with bass clef and key signature of two sharps. The instruction *cresc.* is written below the staff.

Handwritten musical score for the second system, featuring staves for Flute (Fl.), Clarinet (Cl.), Saxophone (Sg.), Trombone (Tbn.), Trumpet (Tr.), Horn (Hr.), and Double Bass (Db.).


- Fl.:** Staff with treble clef and key signature of one sharp. The instruction *fff* is written below the staff.
- Cl.:** Staff with treble clef and key signature of one sharp. The instruction *fff* is written below the staff.
- Sg.:** Staff with treble clef and key signature of two sharps. The instruction *fff* is written below the staff.
- Tbn.:** Staff with bass clef and key signature of two sharps. It includes a boxed-in phrase labeled *via C* and dynamic markings *fff*.
- Tr.:** Staff with treble clef and key signature of two sharps. It includes dynamic markings *fff* and the instruction *h.v.*
- Hr.:** Staff with treble clef and key signature of two sharps. The instruction *fff* is written below the staff.
- Db.:** Staff with bass clef and key signature of two sharps. The instruction *fff* is written below the staff.

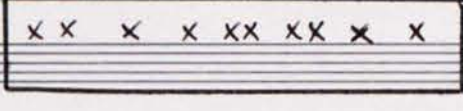
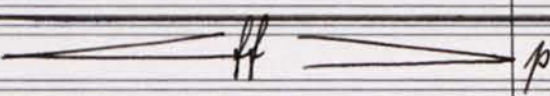
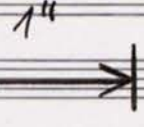
Additional markings and annotations:

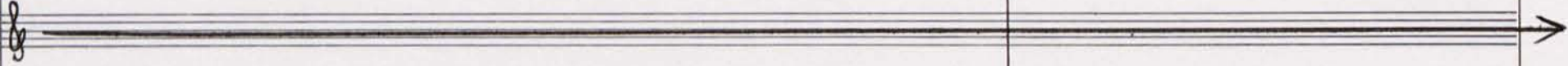
- Two vertical yellow bars highlight specific measures in the Fl., Cl., Sg., and Tr. staves.
- A red circle containing the number **18** is located above the Trombone staff.
- The text **5-6"** is written in the upper right area of the system.
- Boxed-in melodic phrases are present in the Double Bass (Db.) staff, with the instruction *pizz.* written above them.

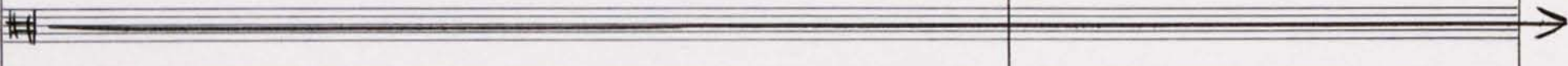
ca 10"

2-3"

Fl. 


Tbn. *re dlanjo po notniku*





Fl. 

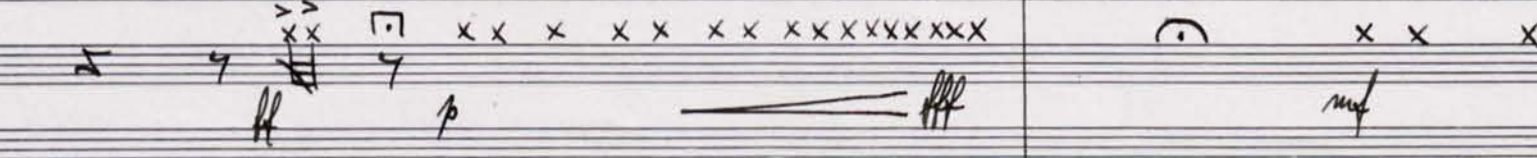
Fl. 





23e

Fl. 

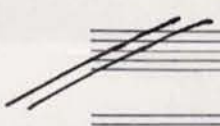
Fl. 

Tbn. 

Fl. 

Fl. 

Trbn. *stacc.* *p*
 W. ch. *mf* *mp* *p*
 Fl. *arco* *pp*
 Vla. *arco* *pp*
 Vcl. *pp*



24 r

Fl. *a tiro* *pp* *molto lento*
 Trbn. *p*
 Vla. *pp*
 Vla. *pp*
 Vcl.

Handwritten musical score for the first system, featuring five staves:

- Tuba:** Treble clef, notes: \bar{b} , $b\bar{b}$, \bar{f} , $\sharp\bar{f}$. A box labeled "ria 5'" is positioned above the staff.
- Klarinet:** Alto clef, notes with accents: \cdot , \cdot , \cdot . Dynamic marking: *mp*.
- Flöte 1:** Treble clef, notes: $b\circ$. Instruction: *sul tasto*.
- Flöte 2:** Treble clef, notes: $b+$. Instruction: *sul tasto*. A box labeled "ria 5'" is positioned above the staff.
- Flöte 3:** Treble clef, notes: \circ . Instruction: *sul tasto*.



25a

20

Handwritten musical score for the second system, featuring four staves:

- Tuba:** Treble clef, notes: \circ , \circ , $\sharp\circ$, $\flat\circ$. Dynamics: *ff*, *p*, *ff*, *mp*, *mp*. Instructions: *sapa breva tona*, *more*. A box labeled "ria 5'" is positioned above the staff.
- Flöte 1:** Treble clef, notes: $b\circ$.
- Flöte 2:** Treble clef, notes: \rightarrow .
- Flöte 3:** Treble clef, notes: \circ .

Trbn.

Flc.

ca 6"

2-3"

21

26 r

Fl.

Cl.

Fg.

Trbn.

Fl.

Fla.

Flc.

Handwritten musical score for Flute 1, Flute 2, Trombone, Flute 3, Flute 4, and Flute 5. The score is divided into three measures. Flute 1 and 2 have melodic lines with slurs and a flat. Trombone has a line with a flat and a slur. Flute 3, 4, and 5 have lines with slurs and a flat. The word "loco" is written above the Flute 3 staff in the second measure. The dynamic marking "ppp" is present in several staves.



27a

22

ca 5"

ca 4"

Handwritten musical score for Flute 1, Trombone, Horn, Flute 2, Flute 3, and Flute 4. The score is divided into two measures. Flute 1 and 3 have wavy lines with a plus sign and a quarter note. Trombone has a line with a slur and a flat, and three 'x' marks in the second measure. Horn has a line with a slur and a flat. Flute 2, 3, and 4 have wavy lines with a plus sign and a quarter note. The dynamic marking "p" is present in the Trombone and Horn staves.

Handwritten musical score for five instruments: Cl., Trbn., Vr., Vla., and Vcl. The score is written on five staves. The Cl. staff has a treble clef and a $\pm \frac{1}{4}$ time signature with a wavy line. The Trbn. staff has a bass clef and a $\frac{1}{4}$ time signature, featuring notes with stems, a *pp* dynamic marking, a *dim.* marking, and a long note with a slur and *lentissimo* above it. The Vr. staff has a treble clef. The Vla. staff has a treble clef and a $\frac{1}{4}$ time signature with a wavy line. The Vcl. staff has a bass clef and a $\frac{1}{4}$ time signature with a wavy line. A purple circular stamp from the University of Ljubljana is visible on the right side of the Trbn. staff.

Primož Kamet
 Ljubljana, 29. VII. 1972.

