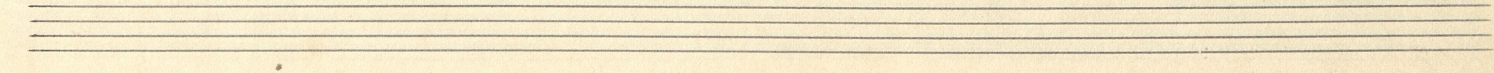
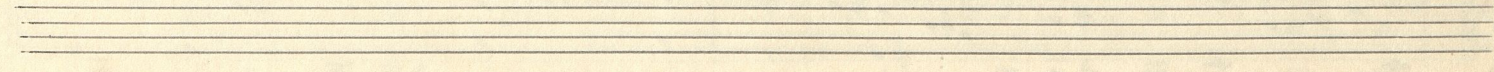
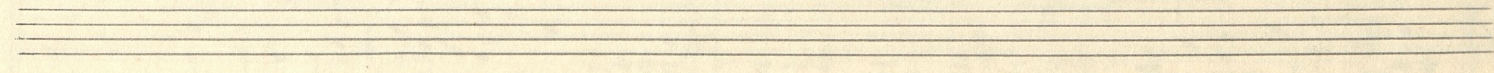
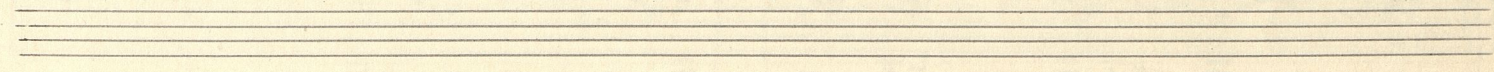
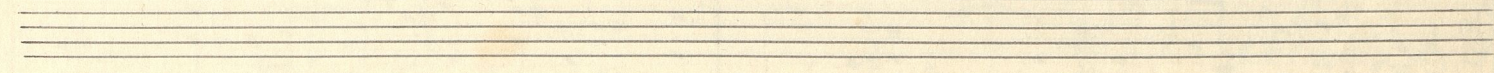
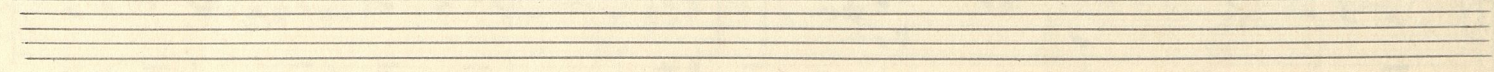
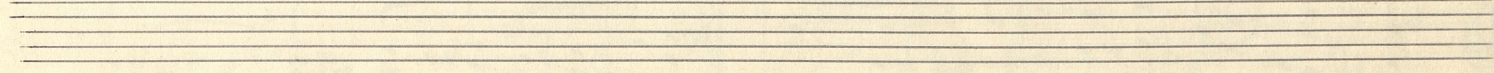
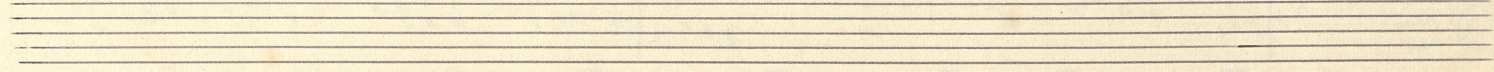
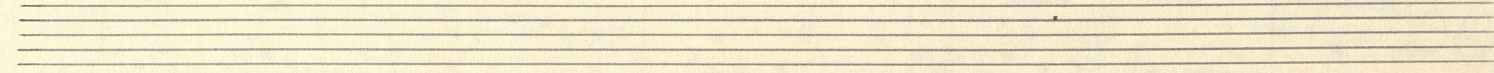
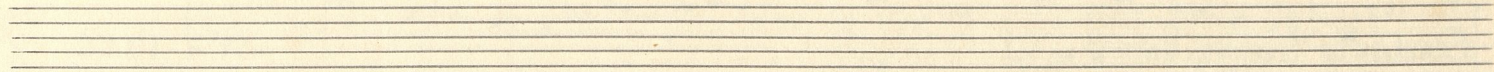
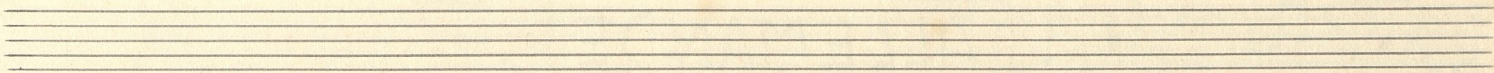
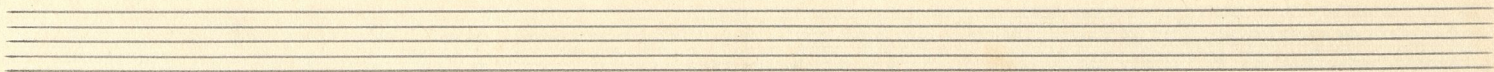


SUITA

2.2



ALLEMANDE

Andante tranquillo ♩ = 52

31.7.1946

sempre legatissimo

p

mf

pp

mf

cresc. ed f animando poco

ff

sostenuto

a tempo

pp

Handwritten musical score, first system. Treble and bass clefs. Dynamics include *pp* and *pppp*. The music features complex rhythmic patterns and chromatic movement.

Handwritten musical score, second system. Treble and bass clefs. Dynamics include *mf*. The music continues with intricate textures and chromatic lines.

Handwritten musical score, third system. Treble and bass clefs. Dynamics include *f*. The music features complex rhythmic patterns and chromatic movement.

Handwritten musical score, fourth system. Treble and bass clefs. Dynamics include *mf*, *f*, and *ff*. The music continues with intricate textures and chromatic lines.

Handwritten musical score, fifth system. Treble and bass clefs. Dynamics include *ppp*, *mp*, and *pp*. The music concludes with a *rit.* marking. The page ends with empty staves.

Allegro vivace $\text{♩} = 80$

COURANTE

3.8.1946

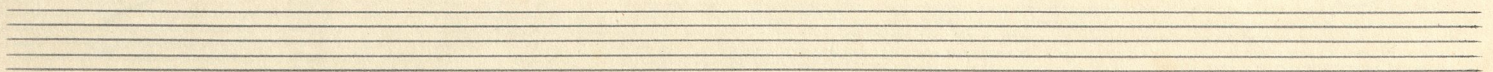
Handwritten musical notation for the first system. It consists of two staves: a treble clef staff on top and a bass clef staff on the bottom. The treble staff begins with a treble clef, a 3/4 time signature, and a *pp* dynamic marking. The music features a melodic line with eighth and sixteenth notes, often beamed together, and rests. The bass staff provides a harmonic accompaniment with chords and moving lines. A large slur covers the first two measures of both staves.

Handwritten musical notation for the second system. It continues the two-staff format. The treble staff shows a continuation of the melodic line with various rhythmic patterns. The bass staff continues the accompaniment. A slur is present over the first two measures of the treble staff.

Handwritten musical notation for the third system. The treble staff features a melodic line with some chromaticism. The bass staff has a more active accompaniment. A slur covers the first two measures of the treble staff.

Handwritten musical notation for the fourth system. A *crese.* (crescendo) marking is written across the middle of the system, with a hairpin symbol. The treble staff continues with a melodic line, and the bass staff provides accompaniment. A slur is present over the first two measures of the treble staff.

Handwritten musical notation for the fifth system. The treble staff shows a melodic line with some chromaticism. The bass staff continues the accompaniment. A slur covers the first two measures of the treble staff.



Handwritten musical score, first system. Treble and bass staves. Includes dynamic marking *subito pp*.

Handwritten musical score, second system. Treble and bass staves.

Handwritten musical score, third system. Treble and bass staves. Includes dynamic markings *pp*, *accel.*, and *sost. ppp*.

Handwritten musical score, fourth system. Treble and bass staves. Includes dynamic marking *ppp*.

Handwritten musical score, fifth system. Treble and bass staves.

Handwritten musical notation for the first system, featuring a treble and bass clef with various notes and accidentals.

Handwritten musical notation for the second system, including a treble clef and a bass clef with notes and accidentals.

Handwritten musical notation for the third system, with a treble clef and a bass clef, and dynamic markings "cresc." and "f".

Handwritten musical notation for the fourth system, featuring a treble clef and a bass clef with notes and accidentals.

Handwritten musical notation for the fifth system, including a treble clef and a bass clef, and dynamic markings "ff" and "maestoso con 8va. ad libit.".

Tranquillo ♩ = 70

SARABANDE

7. 8. 1946.

Handwritten musical notation for the first system. The treble clef staff contains a melody starting with a half note G4, followed by quarter notes A4, B4, and C5. The bass clef staff contains a bass line with a half note G3, followed by quarter notes F3, E3, and D3. Dynamics include *pp* and *f*. The system concludes with a fermata over the final notes.

Handwritten musical notation for the second system. The treble clef staff continues the melody with quarter notes D5, C5, B4, and A4. The bass clef staff continues the bass line with quarter notes C3, B2, A2, and G2. Dynamics include *mf*. The system concludes with a fermata over the final notes.

Handwritten musical notation for the third system. The treble clef staff contains a melody with quarter notes G4, F4, E4, and D4. The bass clef staff contains a bass line with quarter notes F3, E3, D3, and C3. Dynamics include *f*. The system concludes with a fermata over the final notes.

Handwritten musical notation for the fourth system. The treble clef staff continues the melody with quarter notes C4, B3, A3, and G3. The bass clef staff continues the bass line with quarter notes F3, E3, D3, and C3. Dynamics include *p*. The system concludes with a fermata over the final notes.

Handwritten musical notation for the fifth system. The treble clef staff contains a melody with quarter notes G3, F3, E3, and D3. The bass clef staff contains a bass line with quarter notes C3, B2, A2, and G2. Dynamics include *pp* and *ppp*. The system concludes with a fermata over the final notes.

Handwritten musical notation, first system. Treble and bass staves. Dynamics: *pp*. Includes a fermata over the first measure.

Handwritten musical notation, second system. Treble and bass staves. Dynamics: *mf*, *f*. Includes a *Ped.* (pedal) marking and a fermata over the first measure.

Handwritten musical notation, third system. Treble and bass staves. Dynamics: *sffz*, *subito pp*, *rit*. Includes a fermata over the first measure.

Handwritten musical notation, fourth system. Treble and bass staves. Dynamics: *pp*. Includes a fermata over the first measure.

Handwritten musical notation, fifth system. Treble and bass staves. Dynamics: *mf*, *pp*, *ppp*. Includes a fermata over the first measure.

Moderato ♩ = 120

MENUET

8.8.1946

Handwritten musical notation for the first system, measures 1-4. The piece is in 3/4 time. The first staff (treble clef) begins with a piano (*p*) dynamic. The second staff (bass clef) includes a *Ped.* (pedal) marking. The music features a melodic line in the right hand and a supporting bass line in the left hand, with various accidentals and phrasing slurs.

Handwritten musical notation for the second system, measures 5-8. The dynamics range from *f* (forte) to *pp* (pianissimo). The notation includes a triplet in the bass staff and various phrasing slurs and accents.

Handwritten musical notation for the third system, measures 9-12. The dynamics include *sost.* (sostenuto), *ppp* (pianississimo), and *pp*. A *una corda* marking is present in the final measure of the system.

Handwritten musical notation for the fourth system, measures 13-16. The dynamic marking *tre corde* is used in the bass staff. The system concludes with a repeat sign.

Handwritten musical notation for the fifth system, measures 17-20. The dynamics include *quasi f* (quasi forte), *sost.* (sostenuto), and *ppp*. The system concludes with a final double bar line.

Prestissimo ♩. = 144

GIGUE

9.8.1946

Handwritten musical notation for the first system. It consists of two staves. The upper staff is in treble clef with a 6/8 time signature. The lower staff is in bass clef. The music begins with a piano (*pp*) dynamic. The first four measures show a rhythmic pattern of eighth notes. A crescendo hairpin is drawn across the first three measures, and the word "crescendo" is written below the fourth measure.

Handwritten musical notation for the second system, continuing from the first. It consists of two staves. The upper staff has a treble clef and the lower staff has a bass clef. The music continues with eighth-note patterns. A crescendo hairpin is visible across the first two measures of this system.

Handwritten musical notation for the third system, continuing from the second. It consists of two staves. The upper staff has a treble clef and the lower staff has a bass clef. The music continues with eighth-note patterns. A piano (*pp*) dynamic marking is present at the beginning of the system.

Handwritten musical notation for the fourth system, continuing from the third. It consists of two staves. The upper staff has a treble clef and the lower staff has a bass clef. The music continues with eighth-note patterns. A pianissimo (*ppp*) dynamic marking is present at the beginning of the system.

Handwritten musical notation for the fifth system, continuing from the fourth. It consists of two staves. The upper staff has a treble clef and the lower staff has a bass clef. The music continues with eighth-note patterns. A crescendo hairpin is drawn across the first two measures of this system.

Two empty musical staves at the bottom of the page, consisting of a treble clef staff and a bass clef staff.

Handwritten musical score for piano, consisting of six systems of staves. The notation includes treble and bass clefs, dynamic markings, and performance instructions.

- System 1:** Treble clef starts with *pp*. A crescendo hairpin labeled *erasc.* spans across the system.
- System 2:** Continuation of the piece with various note values and accidentals.
- System 3:** Features a double bar line. The right-hand part begins with *ppp* and *una corda*. The left-hand part has a *Ped.* marking.
- System 4:** Continuation of the piece.
- System 5:** Continuation of the piece.
- System 6:** Continuation of the piece, ending with a final cadence.

Handwritten musical score, first system. The system consists of two staves. The upper staff contains a melodic line with various intervals and accidentals. The lower staff contains a bass line with chords and single notes. A dynamic marking *ppp* is written above the first measure of the lower staff. A large, thin brown line is drawn across the system, starting from the first measure and extending to the end.

Handwritten musical score, second system. The system consists of two staves. The upper staff continues the melodic line. The lower staff continues the bass line. A dynamic marking *tre corde* is written above the lower staff in the third measure. A dynamic marking *crese.* is written above the lower staff in the fifth measure. A large, thin brown line is drawn across the system, starting from the first measure and extending to the end.

Handwritten musical score, third system. The system consists of two staves. The upper staff contains a melodic line with many slurs and accents. The lower staff contains a bass line with chords and single notes. A dynamic marking *ff* is written above the lower staff in the third measure. A dynamic marking *siue al Fine* is written above the lower staff in the fourth measure. A large, thin brown line is drawn across the system, starting from the first measure and extending to the end.

Handwritten musical score, fourth system. The system consists of two staves. The upper staff contains a melodic line with slurs and accents. The lower staff contains a bass line with chords and single notes. A large, thin brown line is drawn across the system, starting from the first measure and extending to the end.

