

Vlado Lovrec:

Grobovi tulijo  
[O. Župančič]

Kantata za bariton solo, meš. zbor in orkester

I.

Uvod

Edenke

Vlado

1. Lugubre ♩ = 60

Cl. in A

Fg

Vlc.

Cb.

Cl.

Fg

Vle

Vlc.

Cb.

ob.

cl.

Fg

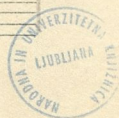
I.

II.

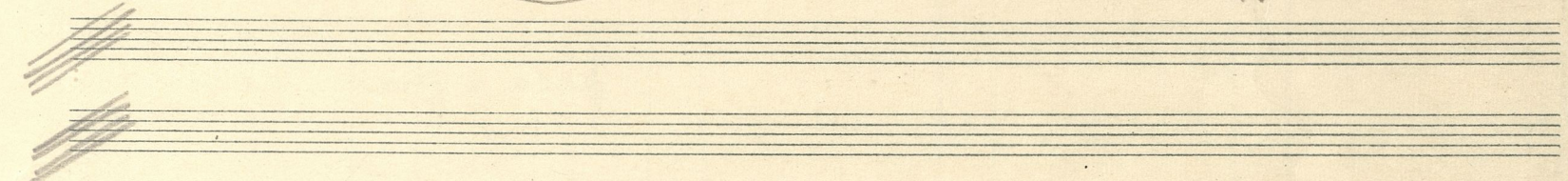
Vle

Vlc.

Cb.



Handwritten musical score for the first system, measures 1-4. The instruments listed on the left are Flute (Fl), Oboe (Ob), Clarinet (Cl), Bassoon (Fg), Cor Anglais (Cor), Violin I (I), Violin II (II), Viola (Vle), and Cello (Cb). The score includes various musical notations such as notes, rests, and dynamic markings like *pp* and *espress.*. A circled number '2' is written above the Cor staff in the first measure.



Handwritten musical score for the second system, measures 5-8. The instruments listed on the left are Flute (Fl), Cor Anglais (Cor), Viola (Vle), and Cello (Cb). The score includes various musical notations such as notes, rests, and dynamic markings like *pp*. A circled number '3' is written above the Flute staff in the fifth measure.

Fl  
ob  
cl  
Fg

Cor  
Tr  
Tibni  
Tribn

4

poco a poco crescendo

Timp  
I  
II  
Vc  
Vc  
Cb

Handwritten musical notation for the first system. It consists of four staves. The top two staves are in treble clef, and the bottom two are in bass clef. The music includes various notes, rests, and accidentals (sharps, flats, naturals). There are some annotations above the first staff, possibly indicating fingerings or dynamics.

Handwritten musical notation for the second system. It features a grand staff with three staves. The top two staves are in treble clef, and the bottom one is in bass clef. The notation includes notes, rests, and accidentals. A piano (*p*) marking is present at the beginning of the system, and a forte (*f*) marking is present at the beginning of the second measure.

5

Handwritten musical notation for the third system. It consists of five staves. The top two staves are in treble clef, and the bottom three are in bass clef. The music is more complex, featuring many beamed notes and slurs. There are various accidentals and dynamic markings throughout the system.

cl

Handwritten musical notation for Clarinet (cl) and strings. The top two staves are for the Clarinet, and the bottom two are for strings. The music includes various notes, rests, and dynamic markings.

*fff*

Handwritten musical notation for strings and Trombone (B). The top two staves are for strings, and the bottom two are for Trombone. The music includes various notes, rests, and dynamic markings.

PHI

6

pti  
Timp

Handwritten musical notation for Percussion (pti) and Timpani (Timp). The top staff is for Percussion and the bottom staff is for Timpani. The music includes various notes, rests, and dynamic markings.

ritard. molto

Handwritten musical notation for strings and Trombone (B). The top two staves are for strings, and the bottom two are for Trombone. The music includes various notes, rests, and dynamic markings.

*ppp*

*ppp*

Handwritten musical notation for the first system, including staves with clefs and notes.

Handwritten musical notation for the second system, featuring complex rhythmic patterns and dynamic markings.

*a tempo*

7

Handwritten musical notation for the third system, including a dynamic marking of "pp".

Handwritten musical notation for the fourth system, including staves with clefs and notes.

7

8



Handwritten musical score for measures 7 and 8. The score includes staves for Clarinet (Cl), Flute (Fp), Cello (Cello), Violin (Vlc), and Double Bass (Cb).

**Measure 7:**

- Cl:** Treble clef, key signature of two flats (Bb, Eb). The staff contains a melodic line with a slur over the first two notes.
- Fp:** Treble clef, key signature of one sharp (F#, C#). The staff contains a melodic line with a slur over the first two notes.
- Cello:** Treble and Bass clefs. The staff contains complex rhythmic patterns with many notes and slurs.
- Vlc/Cb:** Treble and Bass clefs. The staff contains a simple harmonic accompaniment with slurs.

**Measure 8:**

- Cl:** Treble clef, key signature of two flats. The staff contains a melodic line with a slur over the first two notes.
- Fp:** Treble clef, key signature of one sharp. The staff contains a melodic line with a slur over the first two notes.
- Cello:** Treble and Bass clefs. The staff contains complex rhythmic patterns with many notes and slurs.
- Vlc/Cb:** Treble and Bass clefs. The staff contains a simple harmonic accompaniment with slurs.

**Annotations:**

- Cl:** "express." written above the staff.
- Fp:** "10" written above the staff.
- Cello:** "rit. molto" and "pp" written above the staff.
- Vlc/Cb:** "ppp" written above the staff.

Handwritten musical score for measures 9 and 10. The score includes staves for Clarinet (Cl), Flute (Fp), Violin (Vlc), and Double Bass (Cb).

**Measure 9:**

- Cl:** Treble clef, key signature of two flats. The staff contains a melodic line with a slur over the first two notes.
- Fp:** Treble clef, key signature of one sharp. The staff contains a melodic line with a slur over the first two notes.
- Vlc/Cb:** Treble and Bass clefs. The staff contains a simple harmonic accompaniment with slurs.

**Measure 10:**

- Cl:** Treble clef, key signature of two flats. The staff contains a melodic line with a slur over the first two notes.
- Fp:** Treble clef, key signature of one sharp. The staff contains a melodic line with a slur over the first two notes.
- Vlc/Cb:** Treble and Bass clefs. The staff contains a simple harmonic accompaniment with slurs.



Handwritten musical score for the first system, featuring a Clarinet (Cl) and Violin (Vle) part.

**Cl Part:** The upper staff is in treble clef with a key signature of two flats (Bb, Eb). It contains four measures of sustained notes with slurs. The first measure is marked *pp* and includes a dynamic hairpin. The lower staff is in bass clef with a key signature of one sharp (F#) and contains rhythmic notation with stems and beams.

**Vle Part:** The upper staff is in treble clef with a key signature of one sharp (F#). It contains four measures of notes with stems and beams. The first measure is marked *pp*. The lower staff is in bass clef with a key signature of one sharp (F#) and contains rhythmic notation with stems and beams. The word *pizz* is written above the staff in the fourth measure.

Handwritten musical score for the second system, featuring a Clarinet (Cl) and Violin (Vle) part.

**Cl Part:** The upper staff is in treble clef with a key signature of two flats (Bb, Eb). It contains four measures of sustained notes with slurs. The first measure is marked *pp*. The lower staff is in bass clef with a key signature of one sharp (F#) and contains rhythmic notation with stems and beams.

**Vle Part:** The upper staff is in treble clef with a key signature of one sharp (F#). It contains four measures of notes with stems and beams. The lower staff is in bass clef with a key signature of one sharp (F#) and contains rhythmic notation with stems and beams.

19/6/50



