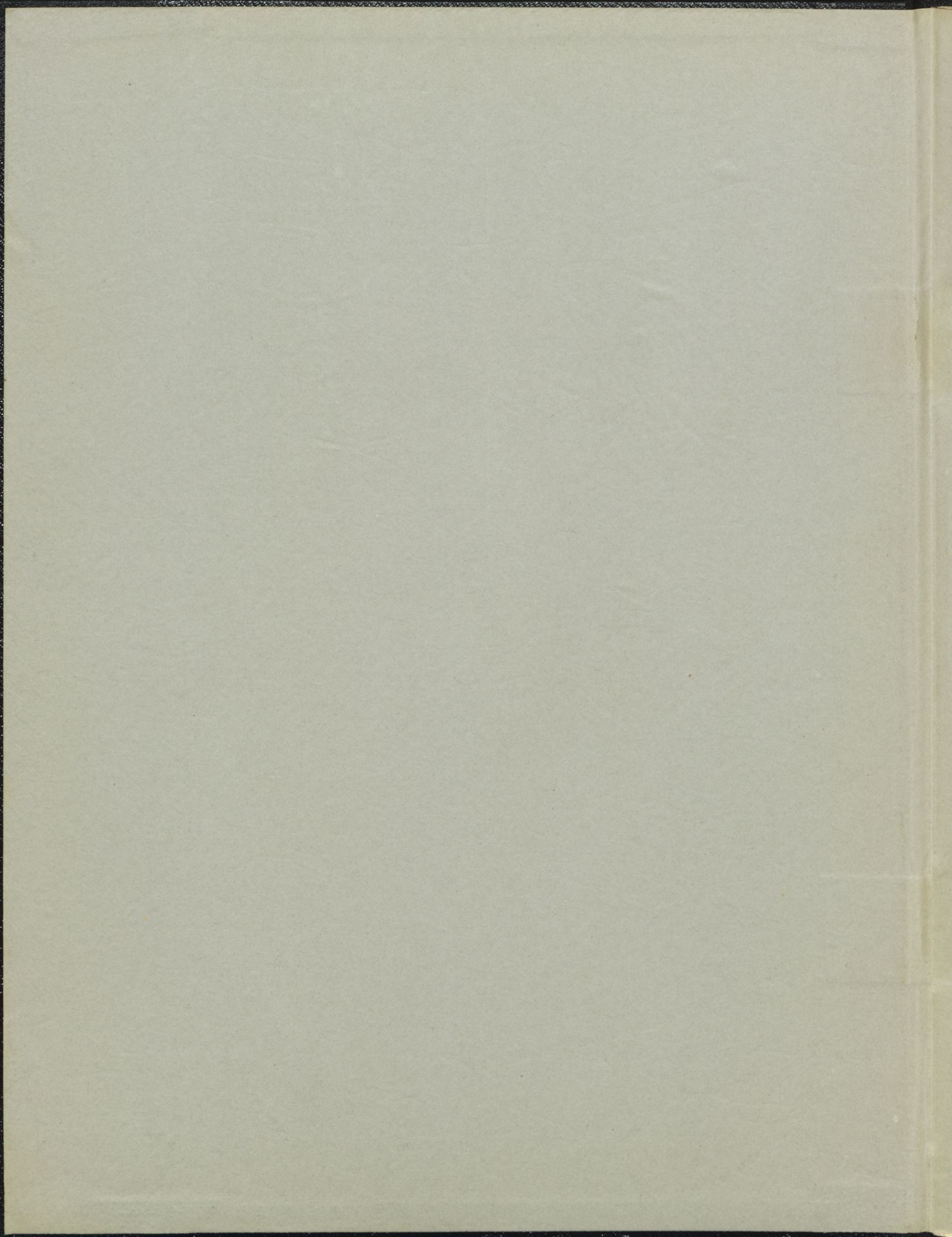


L. M. ŠKERJANC
II. SIMFONIJA



L. M. Penjanc:

II. simfonija.

Klavirski izvleček

L. M. Penjanc
1940.

Gospoda Ludevita Zepiću!

L. M. Penjanc
dec. 1940.

1. stavek: Allegro non troppo str. 1-20

2. stavek: Andante semplice str. 21-26

3. stavek: Allegro molto str. 27-39



MJ 648/1965.

Allegro non troppo

Piano

Handwritten musical notation for the first system, including treble and bass clefs, a key signature of two sharps (F# and C#), and a 9/8 time signature. The notation features various note values, rests, and dynamic markings.

Handwritten musical notation for the second system, continuing the piece with complex rhythmic patterns and chordal structures.

Handwritten musical notation for the third system, featuring a variety of note values and rests, with some notes marked with accents.

Handwritten musical notation for the fourth system, showing a continuation of the melodic and harmonic themes.

Handwritten musical notation for the fifth system, including a circled number '1' above a measure, possibly indicating a first ending or a specific measure.

Handwritten musical notation for the sixth system, concluding the page with various note values and rests.

Handwritten musical score, first system. The music is written on two staves. The upper staff contains a melodic line with various accidentals and dynamics. The lower staff contains a bass line. The instruction *sempre crescendo* is written in green ink across the first two measures. The key signature has one sharp (F#) and the time signature is 4/4.

Handwritten musical score, second system. The music continues on two staves. The upper staff features a melodic line with a green horizontal line underlining a phrase. The lower staff contains a bass line. The key signature remains one sharp (F#) and the time signature is 4/4.

Handwritten musical score, third system. The music is written on two staves. The upper staff has a melodic line with a green horizontal line underlining a phrase. The lower staff contains a bass line. The instruction *molto* is written in green ink. A circled number '2' is written in green above the second measure of the upper staff. The key signature has one sharp (F#) and the time signature is 4/4.

Handwritten musical score, fourth system. The music is written on two staves. The upper staff contains a melodic line with green horizontal lines underlining several phrases. The lower staff contains a bass line. The key signature has one sharp (F#) and the time signature is 4/4.

Handwritten musical score, fifth system. The music is written on two staves. The upper staff contains a melodic line with green horizontal lines underlining several phrases. The lower staff contains a bass line. The key signature has one sharp (F#) and the time signature is 4/4.

Handwritten musical score, sixth system. The music is written on two staves. The upper staff contains a melodic line with green horizontal lines underlining several phrases. The lower staff contains a bass line. The key signature has one sharp (F#) and the time signature is 4/4.

Handwritten musical notation on a grand staff. The right hand features a melodic line with eighth and sixteenth notes, while the left hand provides a harmonic accompaniment with chords and moving lines. A dashed box encloses the first two measures of the right hand.

Handwritten musical notation on a grand staff. A circled number '3' is written above the right hand in the third measure. Green underlines are present under the right hand's notes in the first and third measures, and under the left hand's notes in the second and third measures.

Handwritten musical notation on a grand staff. The right hand has a melodic line with some slurs. The left hand has a bass line with chords. The word *diminuendo* is written in green ink between the staves in the third measure.

Handwritten musical notation on a grand staff. The right hand has a melodic line with a long slur. The left hand has a bass line with chords. A *p...* dynamic marking is written above the right hand in the third measure.

Handwritten musical notation on a grand staff. The right hand has a melodic line with eighth notes. The left hand has a bass line with chords. A green *ff* marking is written above the right hand in the first measure.

Handwritten musical notation on a grand staff. The right hand has a melodic line with eighth notes. The left hand has a bass line with chords. Green underlines are present under the right hand's notes in the first and third measures, and under the left hand's notes in the second and third measures.

Handwritten musical notation on a grand staff. The upper staff contains a melodic line with a dotted line above the first few notes. The lower staff contains a bass line with a green line underlining a portion of it.

Handwritten musical notation on a grand staff. The lower staff has a green *mf* marking above it.

Handwritten musical notation on a grand staff. The lower staff has a green *poco sostenuto* marking above it and a green *a tempo* marking below it.

Handwritten musical notation on a grand staff. A circled number 4 is written above the first measure of the upper staff. The lower staff has a green *mf* marking above it.

Handwritten musical notation on a grand staff. The lower staff has a green *f* marking above it.

Handwritten musical notation on a grand staff. The lower staff has a green *f* marking above it.

Handwritten musical notation on a grand staff. The upper staff contains a melodic line with slurs and ties. The lower staff contains a bass line with chords and a whole note rest at the end.

Handwritten musical notation on a grand staff. A circled number '5' is written above the second measure. Green slurs are present over the upper staff. A red arrow points to a note in the lower staff.

Handwritten musical notation on a grand staff. Green slurs are present over the upper staff. A red arrow points to a note in the lower staff.

Handwritten musical notation on a grand staff. Green slurs are present over the upper staff.

Handwritten musical notation on a grand staff. A circled number '6' and the word 'dolce' are written in green above the first measure. A red arrow points to a note in the lower staff.

Handwritten musical notation on a grand staff. The word 'mf' is written in green above the lower staff.

Handwritten musical notation, first system. Treble and bass staves. Includes dynamic markings *f* and *mf*.

Handwritten musical notation, second system. Treble and bass staves. Includes dynamic markings *f* and *mf*.

Handwritten musical notation, third system. Treble and bass staves. Includes circled measure number 7, dynamic markings *pp* and *mf*, and the instruction *molto*.

Handwritten musical notation, fourth system. Treble and bass staves. Includes dynamic markings *pp* and *mf*, and the instruction *moderato*.

Handwritten musical notation, fifth system. Treble and bass staves. Includes circled measure number 8, dynamic marking *p*, and the instruction *allegro*.

Handwritten musical notation, sixth system. Treble and bass staves. Includes dynamic marking *mf* and the instruction *allegro*.

9

Handwritten musical notation for system 1, measures 1-4. Treble and bass staves with chords and melodic lines. A circled '9' is above the staff.

Handwritten musical notation for system 2, measures 5-8. Treble and bass staves. Includes the handwritten instruction "crescendo sempre" in green ink.

Handwritten musical notation for system 3, measures 9-12. Treble and bass staves with complex chordal textures.

Handwritten musical notation for system 4, measures 13-16. Treble and bass staves with melodic and harmonic development.

10 Allegro animato

Handwritten musical notation for system 5, measures 1-4. Treble and bass staves. Includes a green "f" dynamic marking.

Handwritten musical notation for system 6, measures 5-8. Treble and bass staves with a prominent green horizontal line.

Handwritten musical notation on a grand staff. The right hand features a complex melodic line with many accidentals and slurs. The left hand has a bass line with some triplets and slurs. A green checkmark is visible in the first measure.

Handwritten musical notation on a grand staff. A circled number "11" is written above the staff. The right hand has a melodic line with a triplet and a slur. The left hand has a bass line with a long horizontal line and a slur. The word "sempre" is written in green below the staff.

Handwritten musical notation on a grand staff. The right hand has a melodic line with a slur. The left hand has a bass line with a slur.

Handwritten musical notation on a grand staff. The right hand has a melodic line with a slur. The left hand has a bass line with a slur. The word "poco a poco crescendo" is written in green below the staff.

Handwritten musical notation on a grand staff. The right hand has a melodic line with a slur. The left hand has a bass line with a slur.

Handwritten musical notation on a grand staff. A circled number "12" is written above the staff. The right hand has a melodic line with a slur. The left hand has a bass line with a slur.

13

Handwritten musical notation on a grand staff. The right hand features a series of chords and melodic lines, while the left hand provides a harmonic accompaniment. A green checkmark is visible in the first measure of the right hand.

Handwritten musical notation on a grand staff. A circled number "14" is written above the first measure. The right hand contains a complex chordal texture with some notes marked with a green checkmark. The left hand continues the accompaniment.

Handwritten musical notation on a grand staff. The right hand features a melodic line with many accidentals, and the left hand provides a steady accompaniment. A long green horizontal line is drawn above the right-hand staff.

Handwritten musical notation on a grand staff. A circled number "15" is written above the first measure. The right hand has a melodic line with a green checkmark. The left hand has a complex accompaniment with a green checkmark. The word "appassionato" is written in green below the right-hand staff.

Handwritten musical notation on a grand staff. The right hand features a melodic line with many accidentals and a green checkmark. The left hand provides a complex accompaniment with a green checkmark.

Handwritten musical notation on a grand staff. The right hand features a melodic line with a green checkmark. The left hand has a complex accompaniment with a green checkmark.

Handwritten musical notation for the first system, featuring a treble and bass staff with complex rhythmic patterns and accidentals.

Handwritten musical notation for the second system, including a double bar line and a fermata over the bass staff.

16

Handwritten musical notation for the third system, starting with a circled measure number 16.

calando

Handwritten musical notation for the fourth system, with the tempo marking *calando* written above the staff.

Handwritten musical notation for the fifth system, featuring a double bar line and a fermata over the bass staff.

17

Handwritten musical notation for the sixth system, starting with a circled measure number 17.

Handwritten musical notation on a grand staff. The upper staff contains a melodic line with various ornaments and slurs. The lower staff contains a bass line with chords and a long horizontal line. The key signature has two sharps (F# and C#).

Handwritten musical notation on a grand staff. The upper staff features a complex melodic line with many slurs and ornaments. The lower staff contains a bass line with chords. A green 'f' dynamic marking is present. The key signature has two sharps.

Handwritten musical notation on a grand staff. The upper staff has a melodic line with slurs and ornaments. The lower staff contains a bass line with chords. The key signature has two sharps.

Handwritten musical notation on a grand staff. The upper staff has a melodic line with slurs and ornaments. The lower staff contains a bass line with chords. A green horizontal line is drawn under a section of the bass line. The key signature has two sharps.

Handwritten musical notation on a grand staff. The upper staff has a melodic line with slurs and ornaments. The lower staff contains a bass line with chords. A green horizontal line is drawn under a section of the bass line. The key signature has two sharps.

Handwritten musical notation on a grand staff. The upper staff has a melodic line with slurs and ornaments. The lower staff contains a bass line with chords. A circled number '48' is written in the left margin. A green 'f' dynamic marking is present. The key signature has two sharps.

Handwritten musical notation on a grand staff. The upper staff contains a melodic line with many accidentals and slurs. The lower staff contains a bass line with chords and some accidentals. There are green underlines under certain notes in both staves.

Handwritten musical notation on a grand staff. The upper staff features a complex melodic line with many accidentals. The lower staff has a bass line with some notes and accidentals. There are green markings, including a 'p' dynamic marking and some slurs.

Handwritten musical notation on a grand staff. The upper staff has a melodic line with many accidentals. The lower staff has a bass line with notes and accidentals. The word "calando" is written in green in the lower staff.

Handwritten musical notation on a grand staff. The upper staff has a melodic line with many accidentals. The lower staff has a bass line with notes and accidentals. There are green underlines under certain notes in the upper staff.

Handwritten musical notation on a grand staff. The upper staff has a melodic line with many accidentals. The lower staff has a bass line with notes and accidentals. A circled number "19" is written above the upper staff. There are green markings, including a 'p' dynamic marking and some slurs.

Handwritten musical notation on a grand staff. The upper staff has a melodic line with many accidentals. The lower staff has a bass line with notes and accidentals. There are green markings, including a 'p' dynamic marking and some slurs.

20 Tempo I^o

Handwritten musical notation for the first system, featuring a grand staff with treble and bass clefs. The music includes various notes, rests, and dynamic markings such as *p* and *f*. Green lines are drawn under certain notes in the bass staff.

Handwritten musical notation for the second system, continuing the piece. It includes a *crescendo sempre* marking in green ink. The notation shows complex harmonic structures with many accidentals.

Handwritten musical notation for the third system, showing a continuation of the melodic and harmonic lines. The notation is dense with notes and rests.

Handwritten musical notation for the fourth system, featuring a *molto* marking in green ink. The notation includes a large green bracket under a section of the bass staff.

22

Handwritten musical notation for the fifth system, starting with a circled number "22". The notation continues with complex harmonic and melodic patterns.

Handwritten musical notation for the sixth system, concluding the page with various notes and rests.

Handwritten musical notation, first system. Treble and bass staves with notes, rests, and accidentals.

Handwritten musical notation, second system. Treble and bass staves with notes, rests, and accidentals.

Handwritten musical notation, third system. Treble and bass staves. A circled number "23" is written above the treble staff. Green underlines are present under some notes in both staves.

Handwritten musical notation, fourth system. Treble and bass staves with notes, rests, and accidentals. Green underlines are present under some notes in the treble staff.

Handwritten musical notation, fifth system. Treble and bass staves with notes, rests, and accidentals. Green underlines and a green "f" marking are present.

Handwritten musical notation, sixth system. Treble and bass staves with notes, rests, and accidentals. The word "crescendo" is written in green above the bass staff.

Handwritten musical notation for measures 22-23. The system consists of two staves. The upper staff contains a melodic line with several slurs and accidentals. The lower staff contains a complex accompaniment with many beamed notes and slurs. A green horizontal line is drawn across the lower staff in the second measure.

24

Handwritten musical notation for measures 24-25. The system consists of two staves. The upper staff has a few notes with slurs and accents. The lower staff features a dense, rhythmic accompaniment with many beamed notes. A green 'ff' marking is present in the first measure of the lower staff.

Handwritten musical notation for measures 26-27. The system consists of two staves. The upper staff has a melodic line with slurs and accents. The lower staff has a complex accompaniment with many beamed notes and slurs.

25

Handwritten musical notation for measures 28-29. The system consists of two staves. The upper staff has a melodic line with slurs and accents. The lower staff has a complex accompaniment with many beamed notes and slurs.

26

Handwritten musical notation for measures 30-31. The system consists of two staves. The upper staff has a melodic line with slurs and accents. The lower staff has a complex accompaniment with many beamed notes and slurs. A green 'ff' marking and the word 'incalzando' are written in the lower staff.

Handwritten musical notation for measures 32-33. The system consists of two staves. The upper staff has a melodic line with slurs and accents. The lower staff has a complex accompaniment with many beamed notes and slurs.

poco a poco accelerando

27

Handwritten musical score for measures 27-28. The top staff is in treble clef and the bottom staff is in bass clef. The key signature has two sharps (F# and C#). The music features a complex texture with many beamed notes and rests. A green line is drawn under the bass staff in measure 27.

Handwritten musical score for measures 28-29. The top staff is in treble clef and the bottom staff is in bass clef. The key signature has two sharps. The music continues with complex textures and many beamed notes.

28

sempre più insistente

sempre

Handwritten musical score for measures 29-30. The top staff is in treble clef and the bottom staff is in bass clef. The key signature has two sharps. The music continues with complex textures and many beamed notes. A green line is drawn under the bass staff in measure 29.

Handwritten musical score for measures 30-31. The top staff is in treble clef and the bottom staff is in bass clef. The key signature has two sharps. The music continues with complex textures and many beamed notes.

29

Handwritten musical score for measures 31-32. The top staff is in treble clef and the bottom staff is in bass clef. The key signature has two sharps. The music continues with complex textures and many beamed notes.

Handwritten musical score for measures 32-33. The top staff is in treble clef and the bottom staff is in bass clef. The key signature has two sharps. The music continues with complex textures and many beamed notes.

poco ritenuto

Handwritten musical notation for the first system, featuring piano and bass staves with complex chordal textures and melodic lines.

30 *Piu mosso*

Handwritten musical notation for the second system, starting with a circled number 30 and the tempo marking "Piu mosso". Includes piano and bass staves.

Handwritten musical notation for the third system, continuing the piece with piano and bass staves.

molto accelerando

Handwritten musical notation for the fourth system, marked "molto accelerando", showing increasing rhythmic intensity.

Handwritten musical notation for the fifth system, continuing the accelerated section.

Handwritten musical notation for the sixth system, concluding the piece with piano and bass staves.

31 Animato assai

Molto lento

32

sempre allargando

Lu.
4.12.1980

Suavemente semplice

Handwritten musical notation for the first system, featuring a treble and bass clef with various notes and rests. A green 'r' is written above the first measure of the bass line.

Handwritten musical notation for the second system, continuing the piece with similar notation and a green 'r' in the bass line.

Handwritten musical notation for the third system, starting with a circled '1' in the treble clef and a green 'f' in the bass line.

Handwritten musical notation for the fourth system, ending with a green 'rit.' and a triplet of notes in the treble clef.

Handwritten musical notation for the fifth system, starting with a circled '2' and the text 'a tempo' in green, and a green 'pizz.' in the bass line.

Handwritten musical notation for the sixth system, starting with a circled '3' in the treble clef.

crenendo ed accentrando

Handwritten musical notation for the first system, featuring a treble and bass clef with various notes and rests. A green bracket spans the first two measures. A circled '6' is written above the third measure.

poco rit. a tempo

Handwritten musical notation for the second system, including a treble and bass clef. A green bracket is under the second measure. A circled '6' is written above the third measure.

molto dim.

Handwritten musical notation for the third system, with a treble and bass clef. A green bracket is under the second measure.

Handwritten musical notation for the fourth system, with a treble and bass clef. A green bracket is under the second measure.

sostenuto assai

Handwritten musical notation for the fifth system, with a treble and bass clef. A circled '4' is written above the second measure. A green bracket is under the second measure.

Handwritten musical notation for the sixth system, with a treble and bass clef. A green bracket is under the second measure.

8 Lo stesso tempo

molto cantabile

Handwritten musical notation for the first system, featuring a piano introduction with a treble clef and a bass clef. The key signature has five flats. The right hand begins with a melodic line, and the left hand provides harmonic support. A 'p' dynamic marking is present in the right hand. A green line is drawn under the first few notes of the right hand.

Handwritten musical notation for the second system, continuing the piano introduction. The right hand features a triplet of eighth notes. A green line is drawn above the triplet.

Handwritten musical notation for the third system, continuing the piano introduction. The right hand features a triplet of eighth notes. A green line is drawn above the triplet.

Handwritten musical notation for the fourth system, continuing the piano introduction. The right hand features a triplet of eighth notes. A green line is drawn above the triplet.

Handwritten musical notation for the fifth system, continuing the piano introduction. The right hand features a triplet of eighth notes. A green line is drawn above the triplet. The word "diminuendo" is written above the system.

Handwritten musical notation for the sixth system, continuing the piano introduction. The right hand features a triplet of eighth notes. A green line is drawn above the triplet. The word "sostenuto" is written above the system.

9) *a tempo*

Handwritten musical notation for system 9, measures 1-4. Treble and bass staves with notes, rests, and accidentals. Includes a dynamic marking 'mp' and a circled measure number '9'.

Handwritten musical notation for system 9, measures 5-8. Treble and bass staves with notes, rests, and accidentals. Includes a dynamic marking 'mp' and the instruction 'solennito'.

Handwritten musical notation for system 10, measures 1-4. Treble and bass staves with notes, rests, and accidentals. Includes the instruction 'a tempo' and a circled measure number '10'.

Handwritten musical notation for system 10, measures 5-8. Treble and bass staves with notes, rests, and accidentals. Includes the instruction 'dolce'.

Handwritten musical notation for system 11, measures 1-4. Treble and bass staves with notes, rests, and accidentals. Includes a circled measure number '11' and the instruction 'dolce'.

Handwritten musical notation for system 11, measures 5-8. Treble and bass staves with notes, rests, and accidentals. Includes the instruction 'ritardando'.

12 *a tempo*

Tempo I°

Handwritten musical notation for measures 12-13. The top staff is in treble clef and the bottom in bass clef. The key signature has four flats. Dynamics include *mp* and *p*. There are green markings above the notes.

Handwritten musical notation for measures 13-14. The top staff is in treble clef and the bottom in bass clef. The key signature has four flats. Dynamics include *p* and *mp*. There are green markings above the notes.

13 *Largo*

Handwritten musical notation for measures 14-15. The top staff is in treble clef and the bottom in bass clef. The key signature has four flats. Dynamics include *mf*. There are green markings above the notes.

Handwritten musical notation for measures 15-16. The top staff is in treble clef and the bottom in bass clef. The key signature has four flats. There are green markings above the notes.

14

Handwritten musical notation for measures 16-17. The top staff is in treble clef and the bottom in bass clef. The key signature has four flats. Dynamics include *p* and *mp*. There are green markings above the notes.

(senza ritardando)

Handwritten musical notation for measures 17-18. The top staff is in treble clef and the bottom in bass clef. The key signature has four flats. Dynamics include *mp*. There are green markings above the notes.

Alto
4. 22.
1940

III.

Allegro molto

creando ed accelerando

diminuendo

③ (a tempo)

mf

④

f marcato

f

⑤

f

f

f

f marcato

6

Handwritten musical notation for system 6, measures 1-2. The notation is in treble and bass clefs with a key signature of two sharps (F# and C#). The first measure contains a dynamic marking *ff* in green ink. The music features complex chordal textures and melodic lines.

Handwritten musical notation for system 6, measures 3-4. The notation continues with complex chordal textures and melodic lines in treble and bass clefs.

Handwritten musical notation for system 6, measures 5-6. The notation continues with complex chordal textures and melodic lines in treble and bass clefs.

7

Handwritten musical notation for system 7, measures 1-2. The notation is in treble and bass clefs with a key signature of two sharps. The first measure contains a dynamic marking *ff sempre* in green ink. The music features complex chordal textures and melodic lines.

Handwritten musical notation for system 7, measures 3-4. The notation continues with complex chordal textures and melodic lines in treble and bass clefs. A green marking *mix* is visible in the second measure.

8

Handwritten musical notation for system 8, measures 1-2. The notation is in treble and bass clefs with a key signature of two sharps. The music features complex chordal textures and melodic lines.

decrecendo poco a poco

poco ritardando ⑨ *a tempo*

poco a poco crescendo

Handwritten musical notation for the first system, featuring a treble and bass clef with various notes and rests. A green slur is drawn over the first two measures of the treble staff.

(10)

Handwritten musical notation for the second system, starting with a circled measure number "10". It includes a treble and bass clef with complex rhythmic patterns and accidentals. A green slur is present in the treble staff.

Handwritten musical notation for the third system, featuring a treble and bass clef. The word "marcato" is written in green in the treble staff. A green slur is drawn over the first two measures of the bass staff.

(11)

Handwritten musical notation for the fourth system, starting with a circled measure number "11". It includes a treble and bass clef with various notes and rests. A green slur is present in the treble staff.

(12)

Handwritten musical notation for the fifth system, starting with a circled measure number "12". It includes a treble and bass clef with various notes and rests. A green slur is present in the treble staff.

Handwritten musical notation for the sixth system, featuring a treble and bass clef with various notes and rests. A green slur is present in the treble staff.

Handwritten musical notation for the first system, featuring a treble and bass staff with complex chords and melodic lines. Green annotations include underlines and arrows.

Handwritten musical notation for the second system, continuing the piece with similar complex textures. Green annotations are present.

Handwritten musical notation for the third system, showing further development of the musical ideas. Green annotations are present.

(13) *(lo stesso tempo)*

Handwritten musical notation for the fourth system, starting with a circled number 13 and the instruction "(lo stesso tempo)". The music is marked "p dolce e cantabile". Green annotations include underlines and arrows.

Handwritten musical notation for the fifth system, marked "agitato". The music becomes more rhythmic and complex. Green annotations are present.

Handwritten musical notation for the sixth system, concluding the page with dense harmonic textures. Green annotations are present.

14

ritardando

largo

ritardando

15) *a tempo, agitato*

16)

Handwritten musical notation on a grand staff. The right hand features a complex melodic line with many beamed notes and slurs. The left hand has a bass line with some chords and slurs. Green markings, including slurs and accents, are present throughout the system.

Handwritten musical notation on a grand staff. A circled number "17" is written above the staff. The right hand has a melodic line with slurs and accents. The left hand has a bass line with some chords and slurs. The word "marc." is written in green below the left hand. Green markings, including slurs and accents, are present throughout the system.

Handwritten musical notation on a grand staff. The right hand has a melodic line with slurs and accents. The left hand has a bass line with some chords and slurs. Green markings, including slurs and accents, are present throughout the system.

Handwritten musical notation on a grand staff. A circled number "18" is written above the staff. The right hand has a melodic line with slurs and accents. The left hand has a bass line with some chords and slurs. Green markings, including slurs and accents, are present throughout the system.

Handwritten musical notation on a grand staff. The right hand has a melodic line with slurs and accents. The left hand has a bass line with some chords and slurs. Green markings, including slurs and accents, are present throughout the system.

Handwritten musical notation on a grand staff. The right hand has a melodic line with slurs and accents. The left hand has a bass line with some chords and slurs. Green markings, including slurs and accents, are present throughout the system.

19

p grazioso

subito *mauato* *f sempre*

20

f

21

f sempre *sempre più agitato*

22

ff marcato

grazioso
mf subito

23

24

25

ma dolce

26

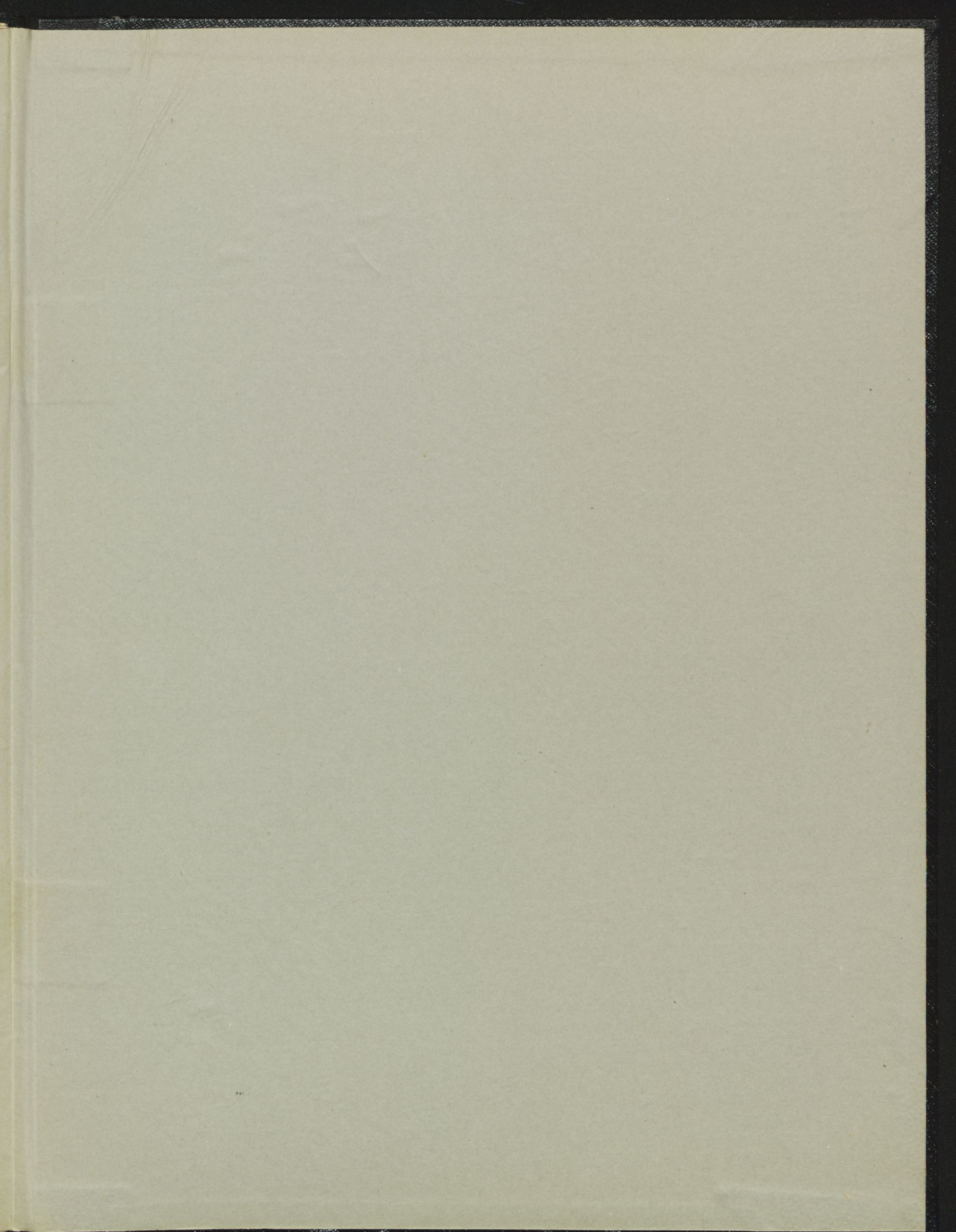
Handwritten musical notation for the first system, featuring treble and bass staves. The notation includes notes, rests, and dynamic markings. A circled number '26' is written above the first measure. The dynamic marking *ff subito* is written in green ink above the second measure. A green horizontal line is drawn across the bass staff in the second measure.

Handwritten musical notation for the second system, featuring treble and bass staves. The notation includes notes, rests, and dynamic markings. The dynamic marking *f* is written in green ink above the first measure. The dynamic marking *cantabile* is written in green ink above the third measure. A green horizontal line is drawn across the bass staff in the first measure.

Handwritten musical notation for the third system, featuring treble and bass staves. The notation includes notes, rests, and dynamic markings. The dynamic marking *f* is written in green ink above the second measure. The tempo marking *(sempre a tempo)* is written in green ink above the first measure. The dynamic marking *ff* is written in green ink above the third measure. A green horizontal line is drawn across the bass staff in the second measure.

Lit.
6.12.1940





NARODNA IN UNIVERZITETNA KNJIŽNICA

M rkp
Škerjanc, L.M.
Simfonija 2 kl.



796500648

COBISS ©