



## STATISTIČNE INFORMACIJE RAPID REPORTS

27. AVGUST 2012  
27 AUGUST 2012

št./No 10

### 7 TRG DELA LABOUR MARKET

št./No 4

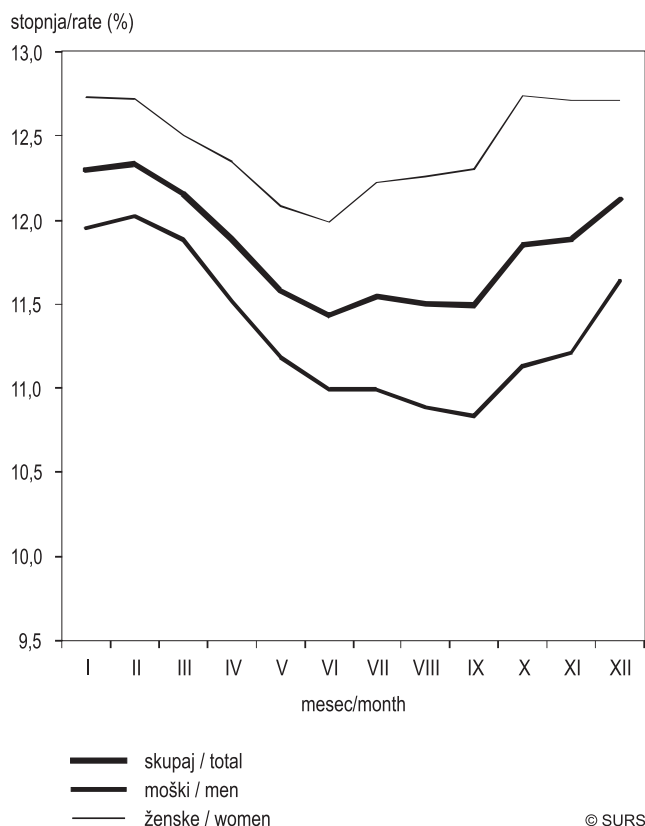
#### AKTIVNO PREBIVALSTVO, SLOVENIJA, 2011 – končni podatki

LABOUR FORCE, SLOVENIA, 2011 – final data

- ▶ Število zaposlenih oseb je leta 2011 večinoma padalo. Zaznati je bilo letni padec števila za 2,4 %.
- ▶ Stopnja registrirane brezposelnosti za oba spola je leta 2011 znašala 11,8 % (za moške 11,4 %, za ženske pa 12,4 %). Število registriranih brezposelnih oseb se je povečalo za 10,1 %.
- ▶ Glede na stanje v predhodnem letu se je število delovno aktivnih prebivalcev povečalo v sedmih in zmanjšalo v dvanajstih dejavnostih; v eni pa se ni spremenilo.
- ▶ V letu 2011 se je število delovno aktivnih prebivalcev povečalo le v pomurski statistični regiji (za 1,4 %), število registriranih brezposelnih oseb pa se je tam zmanjšalo (za 5,0 %). V preostalih statističnih regijah je bilo stanje obratno.
- ▶ In 2011 the number of persons in paid employment in Slovenia was mostly decreasing (at the annual level by 2.4%).
- ▶ The registered unemployment rate was 11.8% (11.4% for men and 12.4% for women). The number of registered unemployed persons increased by 10.1%.
- ▶ Compared to the previous year, the number of persons in employment increased in 7 activities, decreased in 12 and remained the same in 1 activity.
- ▶ In 2011 only in the Pomurska statistical region the number of persons in employment increased (by 1.4%), while the number of registered unemployed persons decreased (by 5.0%). In all other statistical regions the situation was just the opposite.

Grafikon 1: Stopnja registrirane brezposelnosti po spolu, Slovenija, 2011

Chart 1: Registered unemployment rate by sex, Slovenia, 2011



Vir/Source: SURS

Tabela 1: Aktivno prebivalstvo in stopnja registrirane brezposelnosti, Slovenija, 2011

Table 1: Labour force and registered unemployment rate, Slovenia, 2011

|  | Število<br>Number<br>2011 | Indeksi<br>Indices<br>Ø 2011<br>Ø 2010 |   |
|--|---------------------------|--|---|
| <b>Aktivno prebivalstvo</b>                    |                           |  | <b>Labour force</b>                     |
| skupaj   | 934.658                   | 99,9                                   | total                                   |
| moški  | 516.365                   | 99,1                                   | men                                     |
| ženske   | 418.293                   | 100,9                                  | women                                   |
| <b>Delovno aktivno prebivalstvo</b>            |                           |  | <b>Persons in employment</b>            |
| skupaj   | 823.967                   | 98,7                                   | total                                   |
| moški  | 457.728                   | 97,8                                   | men                                     |
| ženske   | 366.238                   | 99,8                                   | women                                   |
| <b>Zaposlene osebe</b>                         |                           |  | <b>Persons in paid employment</b>       |
| skupaj   | 729.050                   | 97,6                                   | total                                   |
| moški  | 391.601                   | 96,7                                   | men                                     |
| ženske   | 337.449                   | 98,7                                   | women                                   |
| <b>Samozaposlene osebe</b>                     |                           |  | <b>Self-employed persons</b>            |
| skupaj   | 94.917                    | 108,1                                  | total                                   |
| moški  | 66.127                    | 104,8                                  | men                                     |
| ženske   | 28.789                    | 116,3                                  | women                                   |
| <b>Registrirane brezposelne osebe</b>          |                           |  | <b>Registered unemployed persons</b>    |
| skupaj   | 110.692                   | 110,1                                  | total                                   |
| moški  | 58.637                    | 111,5                                  | men                                     |
| ženske   | 52.055                    | 108,6                                  | women                                   |
| <b>Stopnja registrirane brezposelnosti (%)</b> |                           |  | <b>Registered unemployment rate (%)</b> |
| skupaj   | 11,8                      |  | total                                   |
| moški  | 11,4                      |  | men                                     |
| ženske   | 12,4                      |  | women                                   |

Vir/Source: SURS (SRDAP, ADS/LFS)

## I. RAZMERE NA TRGU DELA

## Zastopanost po spolu

Leta 2011 so bile v posameznih skupinah aktivnega prebivalstva (to so delovno aktivne in brezposelne osebe skupaj) zaposlene osebe po spolu zastopane takole:

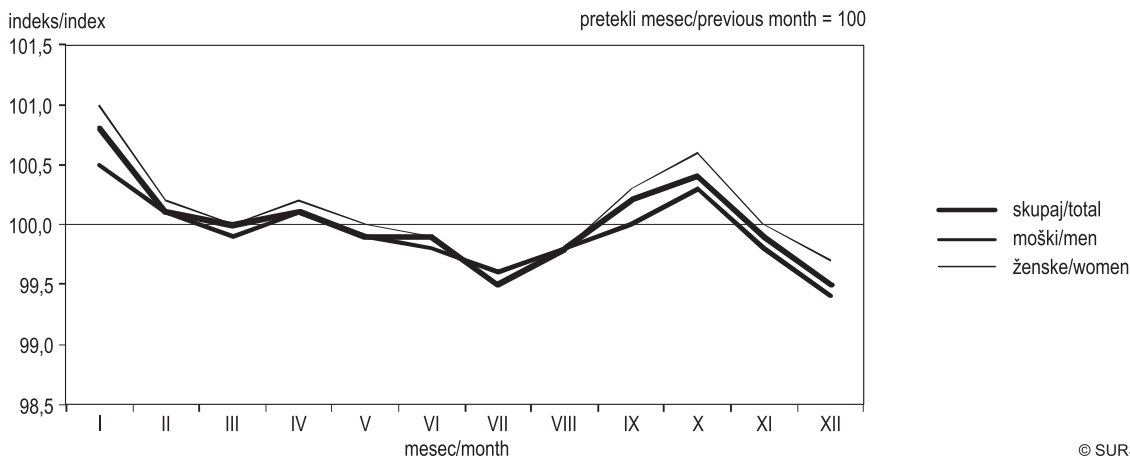
- aktivni prebivalci: 55,2 % moških in 44,8 % žensk;
- delovno aktivni prebivalci: 55,6 % moških in 44,4 % žensk;
- zaposlene osebe: 53,7 % moških in 46,3 % žensk;
- samozaposlene osebe: 69,7 % moških in 30,3 % žensk;
- registrirane brezposelne osebe: 53,0 % moških in 47,0 % žensk.

V primerjavi s stanjem v predhodnem letu se je razmerje med številom moških in številom žensk v skupini **aktivnih prebivalcev** le neznatno (za 0,5 odstotne točke) spremenilo v korist števila žensk. Pri **delovno aktivnemu prebivalstvu** se je glede na stanje v predhodnem letu delež števila moških neznatno zmanjšal (za 0,5 odstotne točke), delež števila žensk pa se je temu primerno povečal. Pri **zaposlenih osebah** je bilo stanje podobno. Tam se je v letu 2011 delež žensk povečal prav tako za 0,5 odstotne točke. V skupini **samozaposlenih oseb** pa je delež moških padel za 2,1 odstotne točke, delež žensk pa temu primerno zvečal. Med **registriranimi brezposelnimi osebami** se je delež moških povečal tudi v letu 2011 (za 0,7 odstotne točke), delež žensk pa ustrezno zmanjšal.

## Število aktivnih prebivalcev je najbolj padlo ob koncu leta

Leta 2011 je bilo v Sloveniji 934.658 aktivnih prebivalcev (za 0,1 % manj kot v predhodnem letu). Od januarja do marca leta 2011 se je število aktivnih prebivalcev zniževalo, aprila se je malo zvišalo in nato je število do julija spet padalo. Med počitnicami pa se je to število zaradi končanega izobraževanja nekaterih začelo znova dvigati, kar je trajalo do oktobra, novembra in decembra pa je njihovo število spet padalo. Nekateri izmed tistih, ki so v letu 2011 končali šolanje, so se zaposlili in se tako uvrstili med **delovno aktivno prebivalstvo**, drugi – tisti, ki po končanem šolanju niso našli zaposlitve – pa so se prijavili kot iskalci zaposlitve in se tako uvrstili med **registrirane brezposelne osebe**, katerih skupno število je bilo glede na predhodno leto večje za malo več kot desetino (za 10,1 %). Število aktivnih moških je padalo nekoliko bolj kot število aktivnih žensk. Rast števila aktivnih žensk je bila manjša od števila takih moških le v juliju. Število aktivnih moških se je leta 2011 spreminjalo podobno, vendar pa bolj zmerno kot število aktivnih žensk.

Grafikon 2: Aktivno prebivalstvo po spolu, Slovenija, 2011  
Chart 2: Labour force by sex, Slovenia, 2011



Vir/Source: SURS

© SURS\_\_

## I. CONDITIONS ON THE LABOUR MARKET

## Breakdown by sex

In individual categories of the labour force (comprising persons in employment and unemployed persons) in Slovenia in 2011 the breakdown of men and women was as follows:

- labour force: 55.2% men and 44.8% women,
- persons in employment: 55.6% men and 44.4% women,
- persons in paid employment: 53.7% men and 46.3% women,
- self-employed persons: 69.7% men and 30.3% women,
- registered unemployed persons: 53.0% men and 47.0% women.

In comparison with the previous year, insignificant changes were recorded in the ratio between men and women in the **labour force**. The number of the labour force changed in favour of women by 0.5 of a percentage point. In case of **persons in employment** the number of men dropped by 0.5 of a percentage point, while the number of women proportionally increased. There was a similar situation in case of **persons in paid employment**. In 2011 the share of women increased by 0.5 of a percentage point. In case of **self-employed persons** the number of men decreased by 2.1 percentage points, while the number of women proportionally increased. In case of **registered unemployed persons** the number of registered unemployed men increased by 0.7 of a percentage point, while the number of unemployed women proportionally decreased.

## The number of labour force deceased the most at the end of 2011

In 2011 the labour force in Slovenia numbered 934,658 (annual decrease by 0.1%). From January to March 2011 the number of labour force was falling; there was a slight growth in April, followed by a decline until July 2011. Due to the completion of education by some people, during the vacation the growth started again and lasted until October. However, in the last two months of 2011 the number again decreased. Some of the people who completed education got employed and thus ranked among **persons in employment**, while others – those who did not manage to find employment – registered as employment seekers and ranked among **registered unemployed persons**, whose number increased by 10.1% at the annual level. Except in July, the number of labour force was decreasing slightly faster for men than for women.



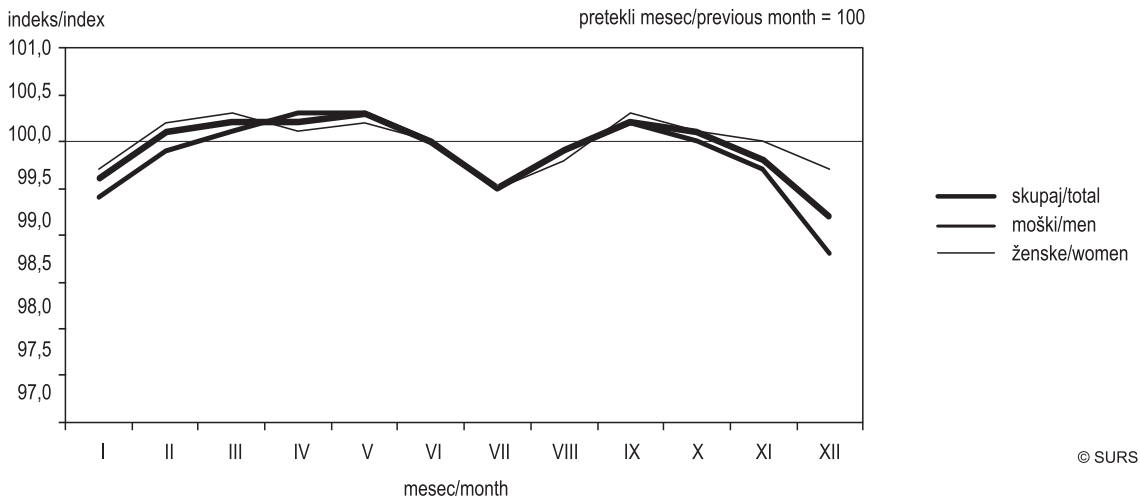
### Število zaposlenih oseb je leta 2011 večinoma padalo

Stanje je bilo podobno tistemu v predhodnem letu. Zaznati je bilo letni padec tega števila za 2,4 %. Število zaposlenih moških je v letu 2011 naraščalo počasneje kot število takih žensk. Od povprečno 729.050 zaposlenih oseb v Sloveniji leta 2011 je bilo moških 391.601 (glede na stanje v predhodnem letu jih je bilo za 3,3 % manj), žensk pa 337.449 (kar je za 1,3 % manj kot v predhodnem letu). V prvi polovici leta in septembra 2011 je bilo moč zaznati povečanje tega števila, ki je bilo julija in avgusta prekinjeno s padcem. Število zaposlenih žensk se je povečevalo razmeroma bolj kot število moških. Oktobra pa se je rast ustavila, nakar je sledil padec števila zaposlenih oseb; število moških je padalo hitreje.

### The number of persons in paid employment in 2011 was mostly decreasing

The situation in 2011 was similar to that in the previous year. In 2011 the annual drop in the number of persons in paid employment by 2.4% was registered. The number of men increased slower than the number of women did. In 2011 there were 729,050 persons in paid employment in Slovenia, of these 391,601 men (annual drop by 3.3%) and 337,449 women (1.3% less than in the previous year). During the first half of 2011 and in September the number of persons in paid employment was slightly growing. In July and August the growth was replaced by a decline. The number of women was growing slightly faster than the number of men. From October on the number of persons in paid employment was decreasing until the end of the year; the number of men dropped faster than the number of women did.

**Grafikon 3: Zaposlene osebe po spolu, Slovenija, 2011**  
Chart 3: Persons in paid employment by sex, Slovenia, 2011



Vir/Source: SURS

### Pri fizičnih osebah tudi v letu 2011 manj zaposlenih oseb

Stanje je bilo tudi v tem letu slabše, saj so se leta 2011 še vrstili stečaji, zaprli pa so tudi veliko delovnih mest. Tako je bil pri **fizičnih osebah** padec zaposlenih oseb 6,9-odstoten (pri **pravnih osebah** 2,0-odstoten). Primerjava po zaposlitvenem statusu med spoloma pa pokaže še, da je v tem primeru število moških tudi v letu 2011 padalo znatno hitreje kot število žensk. Pri **fizičnih osebah** se je število zaposlenih moških zmanjšalo kar za 8,1 %, število zaposlenih žensk pa za več kot polovico manj ali za 4,8 %. Pri **pravnih osebah** je bilo stanje razmeroma boljše, saj se je tam število zaposlenih moških zmanjšalo za 2,8 %, žensk pa za 1,1 %.

### Again fewer persons employed by natural persons than in the previous year

Compared to the previous year, in 2011 the situation was worse because of the bankruptcies and progressive closing of posts. As a result, the number of persons employed by **natural persons** dropped by 6.9%, while the number of persons employed by **legal persons** dropped by 2.0%. The comparison by status of employment between men and women employed by natural persons in 2011 shows that the number of employed men was falling faster than the number of women did. The situation by **natural persons** was as follows: the number of men decreased by 8.1% and the number of women by 4.8%. The situation by **legal persons** was better: the number of men decreased by 2.8% and the number of women by 1.1%.

### V letu 2011 se je v skupini samozaposlenih oseb število žensk večalo hitreje kot število moških

Leta 2011 je bilo v Sloveniji povprečno 94.917 samozaposlenih oseb, od tega 66.127 moških in 28.789 žensk. Med letom se je rast števila samozaposlenih oseb umirila. Januarja 2011 jih je bilo 5,7 % več kot v decembru 2010. Aprila je rast nekoliko poskočila (2,4-odstotna rast), a se je nato prevesila in končala julija z 1,5-odstotnim padcem. Takrat je število samozaposlenih moških padlo za 0,3 %, število samozaposlenih žensk pa za 4,2 %. Novembra pa je bila rast pozitivna; število samozaposlenih žensk se je povečalo tudi decembra, medtem ko je število samozaposlenih moških padlo tudi tedaj. Kljub temu je bilo leta 2011 samozaposlenih oseb več kot predhodno leto, in sicer za 8,1 %; moških je bilo več za 4,8 %, žensk pa več za 16,3 %.

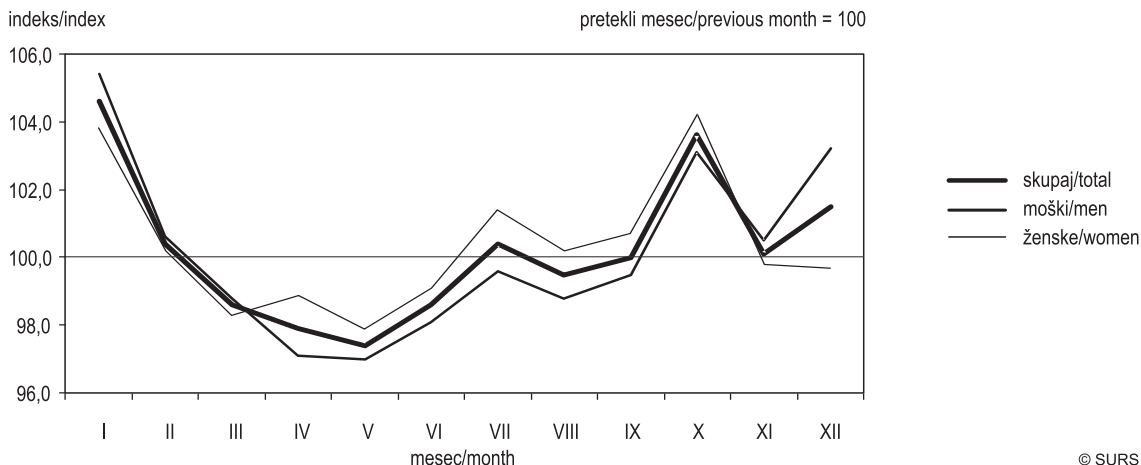
### V Sloveniji tudi v letu 2011 več samostojnih podjetnikov posameznikov

Leta 2011 je bilo 54.575 samostojnih podjetnikov posameznikov (to je za 3,0 % več kot v predhodnem letu). Med njimi je bilo 38.980 moških (to je za 1,1 % več kot v predhodnem letu) in 15.595 žensk (to je za 8,0 % več kot v predhodnem letu). K temu so prispevali tudi ukrepi in programi Zavoda RS za zaposlovanje za vzpodbujanje zaposlovanja in samozaposlitev.

### Zaradi zaostrovanja gospodarske krize nadaljnja rast števila brezposelnih oseb

Povprečna rast števila registriranih brezposelnih oseb je bila v letu 2011 sicer za 6,3 odstotne točke nižja kot v predhodnem letu, vendar je bilo registriranih brezposelnih oseb kljub temu za 10,1 % več kot leto poprej. Rast brezposelnosti, ki je bila v začetku leta znatna, se je hitro umirila in se je v drugem četrtletju prelevila v padec. Število brezposelnih moških se je manjšalo od marca do septembra, nato je rastle do konca leta, število takih žensk pa je rastle od julija do novembra in je nato do konca leta padalo. Glede na stanje v predhodnem letu je bilo leta 2011 brezposelnih moških 11,5 % več, takih žensk pa 8,6 % več. Tudi v letu 2011 so bili za tako stanje podobni vzroki: zapiranje delovnih mest zaradi stečajev in odpuščanje zaposlenih oseb. Na jesensko povečanje pa vplivajo tudi tisti, ki so zaključili šolanje in se niso uspeli zaposliti. Leta 2011 je bilo tako 110.692 registriranih brezposelnih oseb, od tega je bilo 58.637 moških in 52.055 žensk.

### Grafikon 4: Registrirane brezposelne osebe po spolu, Slovenija, 2011 Chart 4: Registered unemployed persons by sex, Slovenia, 2011



Vir/Source: SURS

### Self-employed persons in 2011: the number of women grew faster than the number of men

In Slovenia there were on average 94,917 self-employed persons in total, of these 66,127 men and 28,789 women. During 2011 the growth of the number of self-employed persons stabilised. Compared to December 2010, in January 2011 it increased by 5.7%. After that, in April 2011 the growth jumped by 2.4%, while after that it changed to a 1.5% decline in July. At that time, the number of self-employed men decreased by 0.3%, while the number of self-employed women dropped by 4.2%. In November the total growth started again – the number of self-employed women increased in November and December, while the number of self-employed men increased in November only. In spite of that, in 2011 there were 8.1% more self-employed persons than in the previous year (men by 4.8 and women by 16.3%).

### The number of individual private entrepreneurs in Slovenia continues to grow

There were 54,575 individual private entrepreneurs in Slovenia in 2011, which is an annual growth of 3.0%. Among them there were 38,980 men (annual growth by 1.1%) and 15,595 women (annual growth by 8.0%). That situation was conditioned by the programme of the Employment Service of Slovenia for speeding up the employment and opening new posts.

### Growth of the number of registered unemployed persons due to the economic crisis

In 2011 the number increased by 10.1% (the annual growth was by 6.3 percentage points lower than in the previous year). The growth from the beginning of the year changed to a drop in the second quarter of 2011. The number of registered unemployed men was falling from March until September, which was followed by the growth until the end of the year. In the meantime the number of unemployed women was growing from July to November, until it was interrupted by a slight decline until the end of the year. Compared to the previous year, the number of unemployed men grew by 11.5% and the number of unemployed women by 8.6%. As in the previous year, the reasons for such a situation were closing of the posts due to bankruptcies, dismisses from employment, persons who finished education and could not get a job, etc. On average, in 2011 there were 110,692 registered unemployed persons in Slovenia, which is just over a tenth more than in the previous year. The number of registered unemployed men stopped at 58,637 and of women at 52,055.

### Stopnja registrirane brezposelnosti se je še povečala

Stopnja registrirane brezposelnosti za oba spola je leta 2011 znašala 11,8 % in je bila glede na stanje v predhodnem letu za 1,1 odstotne točke višja. Za moške je znašala 11,4 %, za ženske pa 12,4 % in je bila tako za prve za 1,3, za druge pa za 0,8 odstotne točke višja kot leta 2010. Zaradi slabšanja razmer v gospodarstvu in naraščajoče krize se je stopnja brezposelnosti večala vse leto in tako decembra 2011 dosegla že 12,1 % (11,6 % za moške, 12,7 % za ženske).

## II. PREGLED PO PODROČJIH DEJAVNOSTI

### V letu 2011 največji padec zaposlenosti v gradbeništvu

V tej dejavnosti tudi v letu 2011 niso bili sprejeti nobeni ukrepi za izboljšanje stanja. Poslovna in kadrovska politika sta bili še vedno neustrezni; velika prezadolženost, pomanjkanje denarja, terjatve, plačilna nedisciplina, nizka produktivnost in slaba kakovost opravljenih del, organizacijske in številne druge pomanjkljivosti v gradbeništvu so vzrok, da se je stanje v tej dejavnosti še naprej slabšalo. Vrstili so se stečajni, zaprtih je bilo veliko delovnih mest, zaradi česar se je število delovno aktivnih prebivalcev (zlasti tistih z nižjo izobrazbo) zmanjšalo za več kot desetino, saj jih je bilo za 13,6 % manj.

Znatno manjši kot v gradbeništvu pa je bil padec števila delovno aktivnega prebivalstva v dejavnostih poslovanje z nepremičninami (za 5,2 %) in rudarstvo (za 3,9 %).

V predelovalnih dejavnostih so se razmere glede na stanje v predhodnem letu le nekoliko umirile. Tam je bilo največ stečajev večinoma zaradi neprimernih kadrov, neustreznega vodenja, slabe organiziranosti, velikih stroškov dela, manjšanja izkoriščenosti proizvodnih zmogljivosti, nekonkurenčnosti, pomanjkanja naročil in padanja prihodkov od prodaje. Posledice so bile iste kot leto dni pred tem: izgube, zapiranje proizvodnih obratov in odpuščanje zaposlenih oseb. Kljub vsemu je bil padec števila zaposlenih oseb razmeroma nizek, 2,0 % na letni ravni. Ostalih dejavnosti kriza ni tako prizadela.

Tega leta se je število delovno aktivnih prebivalcev zmanjšalo v dvanajstih dejavnostih, v sedmih se je povečalo, v eni (N druge raznovrstne poslovne dejavnosti) pa se ni spremenilo.

### Registered unemployment rate grew further in 2011

In 2011 the registered unemployment rate was 11.8%, 1.1 percentage point higher than in 2010. For men it was 11.4% (1.3 percentage point higher than in the previous year) and for women 12.4% (annual growth by 0.8 of a percentage point). Due to the conditions in the national economy getting worse throughout 2011 and due to the growing crisis, the registered unemployment rate reached 12.1% at the end of the year in total; for men it was 11.6% and for women 12.7%.

## II. REVIEW BY ACTIVITIES

### In 2011 construction was sharply affected by the depression

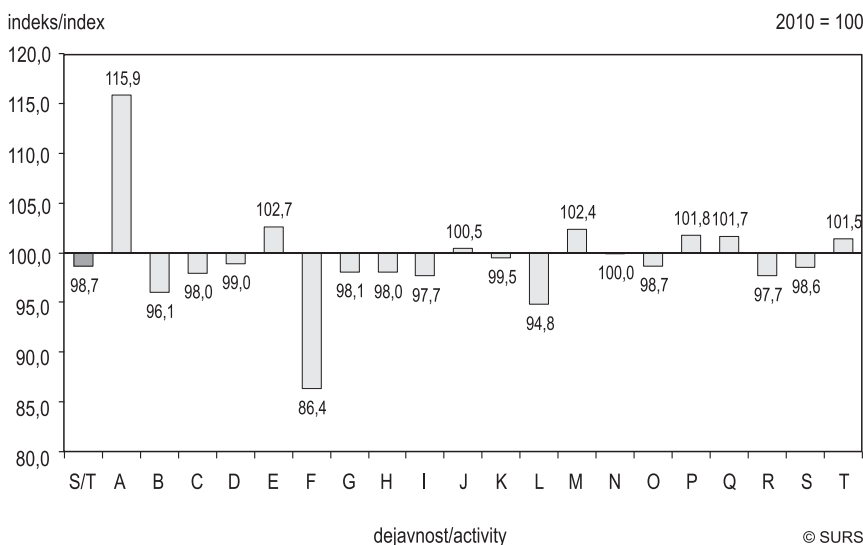
In 2011, due to bad business policy, faulty organization and paying disorder, the trade depression, insolvency, unsettled debts, low quality, financial crisis and other problems, construction was still hardly affected. Because there were no measures adopted to rectify such a situation in construction, the situation was getting worse. In this activity there were many bankruptcies and consequently the number of persons in employment (especially lowly educated ones) dropped by 13.6%.

In real estate activities the situation was better. The decline in the number of persons in employment stopped at 5.2%, while in mining and quarrying it stopped at 3.9%.

In comparison with the previous year, in manufacturing the circumstances calmed in 2011. Although the reasons for the bad situation were mostly similar to those in construction - faulty organisation, non-competitiveness, labour costs, lack of orders and demands, there were many bankruptcies and progressive closing of posts as a result - but the number of persons in employment in manufacturing did not decrease as much as in construction - by 2.0% only. All other activities were not affected so much.

In total in 2011 in 12 activities the number of persons in employment decreased, in 7 it increased and in one (N administrative and support service activities) there were no changes.

**Grafikon 5: Delovno aktivno prebivalstvo po dejavnostih, Slovenija, 2011**  
Chart 5: Persons in employment by activities, Slovenia, 2011



Vir/Source: SURS



**Skupaj**

Kmetijstvo in lov, gozdarstvo, ribištvo  
Rudarstvo  
Predelovalne dejavnosti  
Oskrba z el. energijo, plinom in paro  
Oskr. z vodo; rav. z odp., odp.; san. okolja  
Gradbeništvo  
Trgovina; vzdrž. in popravila mot. vozil  
Promet in skladiščenje  
Gostinstvo  
Informacijske in komunikacijske dej.  
Finančne in zavarovalniške dej.  
Poslovanje z nepremičninami  
Strokovne, znanstvene in tehnične dej.  
Druge raznovrstne poslovne dej.  
Javna uprava in obramba; obv. soc. varnost  
Izobraževanje  
Zdravstvo in socialno varstvo  
Kulturne, razvedrilne in rekreac. dej.  
Druge dejavnosti  
Dej. gosp. z zaposl. hiš. oseb., prz. za lastno rabo T

**S/T Total**

A Agriculture, forestry and fishing  
B Mining and quarrying  
C Manufacturing  
D Electricity, gas, steam and air conditioning supply  
E Water supply, sewerage, waste management and remediation activities  
F Construction  
G Wholesale and retail trade, repair of motor vehicles and motorcycles  
H Transportation and storage  
I Accommodation and food service activities  
J Information and communication  
K Financial and insurance activities  
L Real estate activities  
M Professional, scientific and technical activities  
N Administrative and support service activities  
O Public administration and defence, compulsory social security  
P Education  
Q Human health and social work activities  
R Arts, entertainment and recreation  
S Other service activities  
T Act. of hold. as empl.; prd. act. of hold

**III. PREGLED PO STATISTIČNIH REGIJAH****V letu 2011 več delovno aktivnega prebivalstva le v pomurski statistični regiji**

V tej statistični regiji je njihovo število na letni ravni narastlo za 1,4 %, tako da je bilo tam po novem 39.750 **delovno aktivnih prebivalcev**. K temu je pripomoglo znatno povečanje števila **samozaposlenih oseb** v tej regiji (za 13,3 %). Nasprotno pa je bil v notranjsko-kraški statistični regiji padec števila delovno aktivnih prebivalcev največji, 4,8-odstoten, njihovo število v tej regiji v letu 2011 pa je znašalo 16.970.

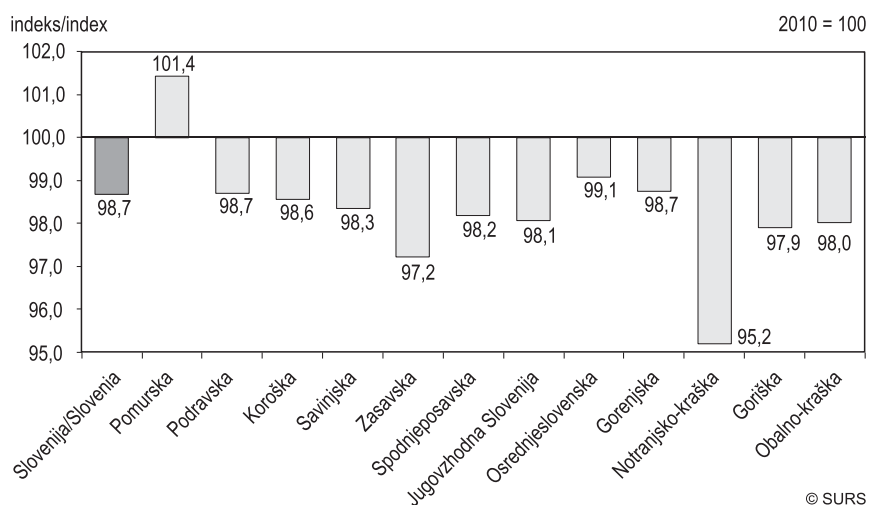
V vseh ostalih statističnih regijah letni padec števila delovno aktivnega prebivalstva ni presegal 3,0 %. Najmanjši padec njihovega števila je bil v osrednjeslovenski statistični regiji, kjer se je to na letni ravni znižalo za 0,9 %. V osrednjeslovenski statistični regiji je bilo leta 2011 tako 272.896 delovno aktivnih prebivalcev. V vseh statističnih regijah skupaj je bilo 11.072 delovno aktivnih prebivalcev manj kot v predhodnem letu.

**III. REVIEW BY STATISTICAL REGIONS****In 2011 the number of persons in employment up only in the Pomurska statistical region**

In this statistical region the number of **persons in employment** increased by 1.4%, so as a result in 2011 the number of persons in employment stopped at 39,750. The 13.3% annual growth of the number of **self-employed persons** in this region made a significant contribution thereto. On the other hand, in Notranjsko-kraška the number of persons in employment dropped the most - by 4.8% to 16,970 .

In all other statistical regions of Slovenia in 2011 the annual decrease did not reach 3.0%. In the Osrednjeslovenska statistical region the annual decrease was the lowest, i.e. by 0.9%. In 2011 there were 272,896 persons in employment in the Osrednjeslovenska statistical region. In all statistical regions together in 2011 there were 11,072 fewer persons in employment than in the previous year.

**Grafikon 6: Delovno aktivno prebivalstvo po statističnih regijah glede na kraj delovnega mesta, Slovenija, 2011**  
Chart 6: Persons in employment by statistical regions according to location of workplace, Slovenia, 2011



Vir/Source: SURS





### Leta 2011 manj brezposelnih oseb le v pomurski statistični regiji

Od povprečnega števila 10.179 registriranih brezposelnih oseb v tej regiji v letu 2010 se je njihovo število znižalo na 9.655 v letu 2011, kar je bilo na letni ravni za 5,0 % manj. Povpraševanje po delavcih je pričelo ponovno naraščati, najbolj v gradbeništvu, zdravstvu in socialnem varstvu ter predelovalnih dejavnostih.

V ostalih statističnih regijah pa se je, razen v koroški, število registriranih brezposelnih oseb znatno povečalo, povsod za več kot dvajsetino. Najbolj, za več kot petino, se je njihovo število povečalo v obalno-kraški statistični regiji (od 4.031 na 4.873 oziroma za 20,9 %).

V primerjavi z letom 2010 se je tam povečalo število oseb, ki so zaposlitev izgubile zaradi stečajev in zaradi prenehanj pogodb o zaposlitvi, ki so bile sklenjene za določen čas. Povečalo se je število dolgotrajno brezposelnih oseb, ki so na zavodu za zaposlovanje prijavljene več kot eno leto, pa tudi število invalidov.

V notranjsko-kraški statistični regiji je bilo registriranih brezposelnih oseb skoraj za petino več kot v predhodnem letu, natančneje za 17,4 % več (rast od 2.094 na 2.457 registriranih brezposelnih oseb) in podobno, za 16,3 % več, v jugovzhodni Sloveniji (od 6.653 na 7.735). Za manj kot dvajsetino se je število registriranih brezposelnih oseb povečalo edino v koroški statistični regiji (od 4.245 na 4.303), za 1,4 %.

### In 2011 fewer registered unemployed persons only in the Pomurska statistical region

The number of registered unemployed persons in the Pomurska statistical region in 2011 dropped by 5.0% at the annual level (from 10,179 in 2010 to 9,655 in 2011). Moreover, the demand for labour force started to increase again, mostly in construction, in human health and social work activities and in manufacturing.

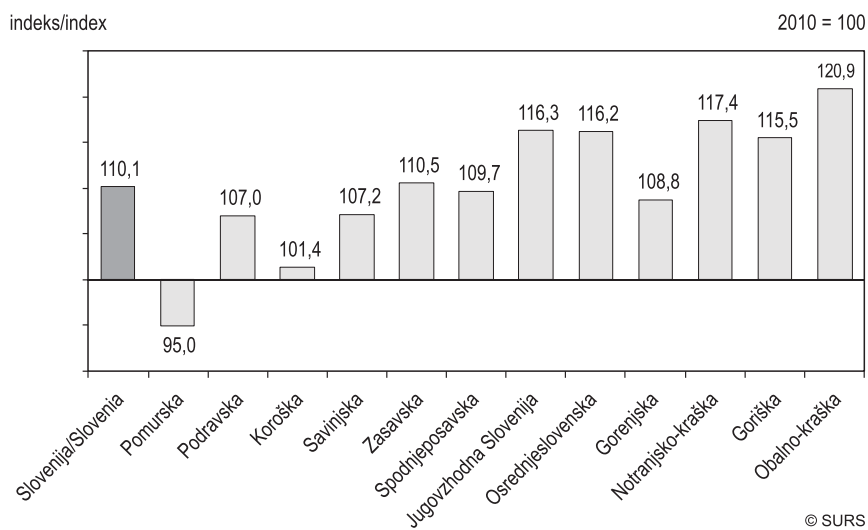
Except in Koroška, in all other statistical regions the number of registered unemployed persons significantly increased, by more than 5.0%. The number increased the most – by more than a fifth – in the Obalno-kraška statistical region - by 20.9% (from 4,031 to 4,873).

In comparison with 2010 the growth of registered unemployment in 2011 was conditioned by bankruptcies and cessation of contracts for work for a fixed period of time. The number of the long-term registered unemployed persons (registered at the employment office for more than a year) and the number of disabled persons also increased.

In the Notranjsko-kraška statistical region the number of registered unemployed persons increased nearly by a fifth over the previous year - by 17.4% (a jump from 2,094 to 2,457). A similar situation was observed in Jugovzhodna Slovenija: the annual growth by 16.3% meant an annual increase in the number from 6,653 to 7,735. In the Koroška statistical region the lowest growth was observed – from 4.245 to 4.303; i.e. by 1.4%.

### Grafikon 7: Brezposelne osebe po statističnih regijah, Slovenija, 2011

Chart 7: Unemployment persons by statistical regions, Slovenia, 2011



Vir/Source: SURS

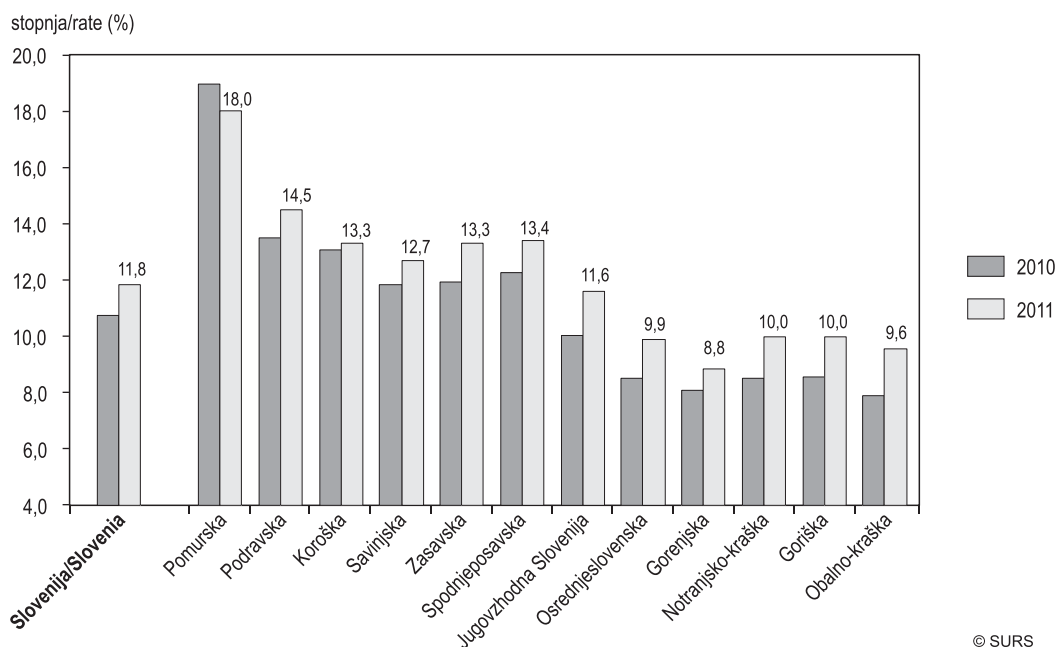
### Stopnje registrirane brezposelnosti so se po statističnih regijah večale različno

Čeprav je bila v pomurski statistični regiji stopnja registrirane brezposelnosti tudi leta 2011 najvišja (znašala je 18,0 %), se je njena rast v letu 2011 nekoliko umirila, in sicer za nekaj manj kot odstotno točko (za 0,9 odstotne točke). V preostalih statističnih regijah pa je stopnja registrirane brezposelnosti rasla bolj kot v predhodnem letu. Najbolj, za 1,7 odstotne točke intenzivnejša, je bila rast v obalno-kraški statistični regiji, kjer je bila stopnja registrirane brezposelnosti razmeroma nizka (9,6 %). Za 1,6 odstotne točke večja rast pa je bila v statistični regiji jugovzhodna Slovenija, kjer se je stopnja registrirane brezposelnosti ustavila pri 11,6 %, kar je nekaj manj od slovenskega povprečja. Najnižjo rast so imeli v gorenjski statistični regiji. Tam je bila letna rast v letu 2011 višja za 0,7 odstotne točke in se je tako približala 10,0 %; stopnja registrirane brezposelnosti v tej statistični regiji je znašala 8,8 %.

### Different growth of registered unemployment rate by statistical regions

Although the registered unemployment rate was the highest in the Pomurska statistical region (18.0%), its growth calmed down in 2011 by 0.9 of a percentage point. In all other statistical regions in 2011 the registered unemployment rates were growing faster than in 2010. The most intensive growth of the registered unemployment rate was registered in the Obalno-kraška statistical region, i.e. by 1.7 percentage point; in 2011 the registered unemployment rate there was 9.6%. Slightly lower growth intensity (by 1.6 percentage point) was observed in Jugovzhodna Slovenija, where the registered unemployment rate stood at 11.6%, which is slightly below the average for Slovenia. The lowest growth was registered in the Gorenjska statistical region, where the registered unemployment rate in 2011 amounted to 8.8% (growth by 0.7 of a percentage point).

**Grafikon 8: Registrirana brezposelnost po statističnih regijah, Slovenija**  
Chart 8: Unemployment rate by statistical regions, Slovenia



Vir/Source: SURS

© SURS

### Velika večina občin pomurske statistične regije z najvišjimi stopnjami registrirane brezposelnosti

Pomurska statistična regija sodi med manj razvite. Stopnja registrirane brezposelnosti se je tudi tam večala vse leto 2011. Primerjava po občinah pokaže, da je bila zelo visoka v velikem številu občin pomurske statistične regije, saj je kar v dvanajstih občinah presežala 20,0 %. Najvišja je bila v občini Rogašovci, kjer se je približala 25,0 %, saj je znašala kar 24,1 %, nato pa v občinah Kuzma (23,9-odstotna) in Dobrovnik (22,9-odstotna).

Nasprotno so imele najnižjo stopnjo registrirane brezposelnosti večinoma občine osrednjeslovenske, gorenjske in notranjsko-kraške statistične regije. Najnižjo pa so imeli v občini Cerkno, in sicer 4,9 %.

### The majority of municipalities in the Pomurska statistical region with highest registered unemployment rates

As the Pomurska statistical region is one of the least developed in Slovenia, there are many municipalities with highest registered unemployment rates. There were 12 municipalities in this statistical region where the registered unemployment rate in 2011 exceeded 20.0%. The highest one was, nearly 25.0%, was recorded in Rogašovci - in 2011 it amounted to 24.1%, a little bit less than in the previous year, followed by municipality Kuzma with 23.9%, Dobrovnik with 22.9%, etc.

On the other hand, the lowest registered unemployment rates were mostly observed in the municipalities of Osrednjeslovenska, Gorenjska and Notranjsko-kraška statistical regions. The lowest registered unemployment rate in 2011 was registered in municipality Cerkno, where it stood at 4.9%.



**Tabela 2: Aktivno prebivalstvo, Slovenija, 2011**  
Table 2: Labour force, Slovenia, 2011

|                                | Število<br>Number<br>2011 | Indeks<br>Index<br>$\frac{\emptyset 2011}{\emptyset 2010}$ |                                  |
|--------------------------------|---------------------------|--|----------------------------------|
| <b>Skupaj</b>                  |                           |  | <b>Total</b>                     |
| Aktivno prebivalstvo           | 934.658                   | 99,9   | Labour force                     |
| Delovno aktivno prebivalstvo   | 823.967                   | 98,7   | Persons in employment            |
| Zaposlene osebe                | 729.050                   | 97,6   | Persons in paid employment       |
| pri pravnih osebah             | 671.812                   | 98,0   | by legal persons                 |
| pri fizičnih osebah            | 57.238                    | 93,1   | by natural persons               |
| Samozaposlene osebe            | 94.917                    | 108,1  | Self employed persons            |
| samostojni podjet. posamez.    | 54.575                    | 103,0  | individual private entrepreneurs |
| osebe, ki oprav. poklic. dej.  | 6.684                     | 97,8   | own-account workers              |
| kmetije                        | 33.659                    | 120,1  | Farmers                          |
| Registrirane brezposelne osebe | 110.692                   | 110,1  | Registered unemployed persons    |
| <b>Moški</b>                   |                           |  | <b>Men</b>                       |
| Aktivno prebivalstvo           | 516.365                   | 99,1   | Labour force                     |
| Delovno aktivno prebivalstvo   | 457.728                   | 97,8   | Persons in employment            |
| Zaposlene osebe                | 391.601                   | 96,7   | Persons in paid employment       |
| pri pravnih osebah             | 355.725                   | 97,2   | by legal persons                 |
| pri fizičnih osebah            | 35.876                    | 91,9   | by natural persons               |
| Samozaposlene osebe            | 66.127                    | 104,8  | Self employed persons            |
| samostojni podjet. posamez.    | 38.980                    | 101,1  | individual private entrepreneurs |
| osebe, ki oprav. poklic. dej.  | 3.546                     | 96,4   | own-account workers              |
| kmetije                        | 23.602                    | 113,2  | Farmers                          |
| Registrirane brezposelne osebe | 58.637                    | 111,5  | Registered unemployed persons    |
| <b>Ženske</b>                  |                           |  | <b>Women</b>                     |
| Aktivno prebivalstvo           | 418.293                   | 100,9  | Labour force                     |
| Delovno aktivno prebivalstvo   | 366.238                   | 99,8   | Persons in employment            |
| Zaposlene osebe                | 337.449                   | 98,7   | Persons in paid employment       |
| pri pravnih osebah             | 316.087                   | 98,9   | by legal persons                 |
| pri fizičnih osebah            | 21.362                    | 95,2   | by natural persons               |
| Samozaposlene osebe            | 28.789                    | 116,3  | Self employed persons            |
| samostojni podjet. posamez.    | 15.595                    | 108,0  | individual private entrepreneurs |
| osebe, ki oprav. poklic. dej.  | 3.138                     | 99,3   | own-account workers              |
| kmetije                        | 10.057                    | 140,4  | farmers                          |
| Registrirane brezposelne osebe | 52.055                    | 108,6  | Registered unemployed persons    |

Vir/Source: SURS (SRDAP, ADS/LFS)

Tabela 3: Delovno aktivno prebivalstvo po področjih dejavnosti, Slovenija, 2011

Table 3: Persons in employment by activity, Slovenia, 2011

| Dejavnost  | Delovno aktivno prebivalstvo<br>Persons in employment | Zaposlene osebe<br>Persons in paid employment |   |   | Samozaposlene osebe<br>Self employed persons |  |   | kmetije<br>farmers | Activities   |
|--|---|---|---|---|--|--|---|--------------------|--|
|  |   | skupaj<br>total                               | pri<br>pravnih<br>osebah<br>by legal<br>persons | pri fizičnih<br>osebah<br>by natural<br>persons | skupaj<br>total                              | samo-<br>stojni<br>podjetniki<br>pos-<br>amezniki<br>individual<br>private<br>enter-<br>preneurs | osebe, ki<br>opravljajo<br>poklicno<br>dejavnost<br>own<br>account<br>workers |                    |  |
| <b>A Skupaj</b>  | <b>823.967</b>  | <b>729.050</b>                                | <b>671.812</b>                                  | <b>57.238</b>                                   | <b>94.917</b>                                | <b>54.575</b>  | <b>6.684</b>  | <b>33.659</b>      | <b>Total</b>   |
| <b>A Kmetijstvo in lov, gozdarstvo, ribištvo</b>       | 38.757  | 4.717   | 4.078   | 639   | 34.040                                       | 530  | -   | 33.510             | <b>A Agriculture, forestry and fishing</b>             |
| 01 Kmet. prz. in lov ter z njima pov. stor.            | 36.208  | 3.000   | 2.622   | 378   | 33.208                                       | 225  | -   | 32.983             | 01 Crop and animal prod., hunting, rel. ser. act.      |
| 02 Gozdarstvo  | 2.337   | 1.583   | 1.350   | 232   | 754  | 249  | -   | 505                | 02 Forestry and logging                                |
| 03 Ribištvo in gojenje vodnih orgnizmov                | 213   | 135   | 106   | 29  | 78   | 55   | -   | 23                 | 03 Fishing and aquaculture                             |
| <b>B Rudarstvo</b>                                     | 2.892   | 2.861   | 2.783   | 78  | 31   | 31   | -   | -                  | <b>B Mining and quarrying</b>                          |
| 05 Pridobivanje premoga                                | 1.691   | 1.691   | 1.691   | -   | -  | -  | -   | -                  | 05 Mining of coal and lignite                          |
| 07 Pridobivanje rud                                    | z   | z   | z   | -   | -  | -  | -   | -                  | 07 Mining of metal ores                                |
| 08 Pridobivanje rudnin in kamnin                       | 1.126   | 1.095   | 1.018   | 78  | 30   | 30   | -   | -                  | 08 Other mining and quarrying                          |
| 09 Stor.za rudarstvo                                   | 67  | 66  | 66  | -   | 1  | 1  | -   | -                  | 09 Mining support service activities                   |
| <b>C Predelovalne dejavnosti</b>                       | 184.844   | 177.772                                       | 166.989   | 10.783  | 7.072  | 6.813  | 135   | 124                | <b>C Manufacturing</b>                                 |
| 10 Prz. živil  | 12.860  | 12.497  | 11.347  | 1.151   | 363  | 304  | -   | 59                 | 10 Mfr. of food products                               |
| 11 Prz. pijač  | 1.775   | 1.701   | 1.670   | 31  | 74   | 13   | -   | 61                 | 11 Mfr. of beverages                                   |
| 13 Prz. tekstilij                                      | 4.096   | 3.951   | 3.824   | 127   | 144  | 144  | -   | -                  | 13 Mfr. of textiles                                    |
| 14 Prz. oblačil  | 5.139   | 4.679   | 4.272   | 407   | 460  | 460  | -   | -                  | 14 Mfr. of wearing apparel                             |
| 15 Prz. usnja, usnjenih in sorodnih izd.               | 3.741   | 3.662   | 3.562   | 100   | 79   | 79   | -   | -                  | 15 Mfr. of leather and related products                |
| 16 Obd., predel. lesa; izd. iz lesa ipd. rz. poh.      | 8.809   | 8.090   | 7.031   | 1.059   | 719  | 715  | -   | 5                  | 16 Mfr. of wood, exc. furn.; mfr. of straw, pl. mt.    |
| 17 Prz. papirja in izd. iz papirja                     | 4.295   | 4.252   | 4.182   | 70  | 43   | 43   | -   | -                  | 17 Mfr. of paper and paper products                    |
| 18 Tisk. in razm. posnetih nosilcev zapisa             | 4.428   | 4.039   | 3.635   | 404   | 389  | 388  | 1   | -                  | 18 Print. and reproduction of recorded media           |
| 19 Prz. koksia in naftnih derivatov                    | 41  | 41  | 41  | -   | -  | -  | -   | -                  | 19 Mfr. of coke and petroleum prod.                    |
| 20 Prz. kemikalij, kemičnih izd.                       | 6.533   | 6.514   | 6.483   | 31  | 18   | 18   | -   | -                  | 20 Mfr. of chemicals and chemical products             |
| 21 Prz. farmac. surovin in preparatov                  | 5.448   | 5.447   | 5.447   | -   | 1  | 1  | -   | -                  | 21 Mfr. of basic pharmaceutical prod., prep.           |
| 22 Prz. izd. iz gume in plastičnih mas                 | 13.391  | 13.061  | 12.202  | 859   | 330  | 330  | -   | -                  | 22 Mfr. of rubber and plastic products                 |
| 23 Prz. nekovinskih mineralnih izd.                    | 7.881   | 7.624   | 7.138   | 486   | 257  | 257  | -   | -                  | 23 Mfr. of oth. non-metallic mineral prod.             |
| 24 Prz. kovin  | 7.482   | 7.449   | 7.347   | 102   | 33   | 33   | -   | -                  | 24 Mfr. of basic metals                                |
| 25 Prz. kovinskih izd., rz. strojev in naprav          | 29.478  | 27.696  | 24.249  | 3.447   | 1.783  | 1.783  | -   | -                  | 25 Mfr. of fabrc. metal prod., exc. mach., equip.      |
| 26 Prz. rač., elektronskih, optičnih izd.              | 6.607   | 6.547   | 6.495   | 52  | 61   | 61   | -   | -                  | 26 Mfr. of computer, electronic, optical prod.         |
| 27 Prz. električnih naprav                             | 18.448  | 18.350  | 18.218  | 132   | 98   | 98   | -   | -                  | 27 Mfr. of electrical equipment                        |
| 28 Prz. dr. strojev in naprav                          | 13.661  | 13.422  | 13.077  | 345   | 240  | 240  | -   | -                  | 28 Mfr. of machinery and equipment n. e. c.            |
| 29 Prz. mot. voz., prikolic in polprikolic             | 12.958  | 12.938  | 12.891  | 48  | 19   | 19   | -   | -                  | 29 Mfr. of mot. vehicles, trailers, semi-trail.        |
| 30 Prz. dr. vozil in plovil                            | 511   | 492   | 489   | 3   | 20   | 20   | -   | -                  | 30 Mfr. of oth. transport equipment                    |
| 31 Prz. pohišstva                                      | 7.586   | 6.996   | 6.053   | 943   | 590  | 590  | -   | -                  | 31 Mfr. of furniture                                   |
| 32 Dr. raznovrstne predelovalne dej.                   | 3.174   | 2.728   | 2.317   | 411   | 447  | 313  | 134   | -                  | 32 Oth. manufacturing                                  |
| 33 Popravila in montaža strojev in naprav              | 6.503   | 5.600   | 5.023   | 577   | 903  | 903  | -   | -                  | 33 Repair, installation of machinery, equip.           |
| <b>D Oskrba z el. energijo, plinom in paro</b>         | 7.883   | 7.826   | 7.790   | 36  | 58   | 58   | -   | -                  | <b>D Electricity, gas, steam, air cond. supply</b>     |
| 35 Oskrba z el. energijo, plinom in paro               | 7.883   | 7.826   | 7.790   | 36  | 58   | 58   | -   | -                  | 35 Electricity, gas, steam, air cond. supply           |
| <b>E Oskr. z vodo; rav. z odpl., odp.; san. okolja</b> | 9.427   | 9.348   | 9.288   | 60  | 80   | 80   | -   | -                  | <b>E Water suppl; sewer., wst. manag., remed. act.</b> |
| 36 Zbiranje, prečišč. in distribucija vode             | 3.773   | 3.772   | 3.771   | 1   | 1  | 1  | -   | -                  | 36 Water collection, treatment and supply              |
| 37 Ravnanje z odpadkami                                | 330   | 323   | 320   | 3   | 8  | 8  | -   | -                  | 37 Sewerage  |
| 38 Zbir. odvoz, rav. z odp.; pridob. sek. sur.         | 5.143   | 5.075   | 5.030   | 45  | 68   | 68   | -   | -                  | 38 Wst. coll., treatment., dispos. act.; mat. rec.     |
| 39 Saniranje okolja idr. ravnanje z odpadki            | 180   | 177   | 166   | 11  | 3  | 3  | -   | -                  | 39 Remediation act., oth. waste manag. ser.            |
| <b>F Gradbeništvo</b>                                  | 67.839  | 57.183  | 44.250  | 12.933  | 10.656                                       | 10.656   | -   | -                  | <b>F Construction</b>                                  |
| 41 Gradnja stavb                                       | 19.252  | 18.048  | 14.459  | 3.588   | 1.204  | 1.204  | -   | -                  | 41 Construction of buildings                           |
| 42 Gradnja inženjskih objektov                         | 11.180  | 11.076  | 10.696  | 380   | 104  | 104  | -   | -                  | 42 Civil engineering                                   |
| 43 Specializirana gradbena dela                        | 37.407  | 28.059  | 19.094  | 8.965   | 9.348  | 9.348  | -   | -                  | 43 Specialized construction activities                 |
| <b>G Trgovina; vzdrž. in popravila mot. vozil</b>      | 109.684   | 101.385                                       | 93.339  | 8.046   | 8.299  | 8.217  | 81  | -                  | <b>G Wholesale, retail; repair of mot. vehicles</b>    |
| 45 Trg. z mot. voz. in popravila mot. voz.             | 14.710  | 12.668  | 10.261  | 2.407   | 2.042  | 2.040  | 2   | -                  | 45 Wholesale, retail, repair of mot. vehicles          |
| 46 Posredništvo in trg. db., rz. z mot. voz.           | 39.666  | 36.355  | 34.712  | 1.643   | 3.311  | 3.307  | 4   | -                  | 46 Whsl., exc. of mot. vehicles and motorcy.           |
| 47 Trg. dr., razen z motornimi vozili                  | 55.307  | 52.361  | 48.366  | 3.996   | 2.946  | 2.870  | 75  | -                  | 47 Ret., exc. of mot. vehicles and motorcycles         |
| <b>H Promet in skladiščenje</b>                        | 46.985  | 42.186  | 35.183  | 7.003   | 4.799  | 4.771  | 29  | -                  | <b>H Transportation and storage</b>                    |
| 49 Kopenski promet; cevovodni transport                | 28.561  | 24.414  | 17.701  | 6.713   | 4.147  | 4.145  | 2   | -                  | 49 Land transport, transport via pipelines             |
| 50 Vodni promet  | 260   | 228   | 216   | 12  | 33   | 33   | -   | -                  | 50 Water transport                                     |
| 51 Zračni promet                                       | 611   | 605   | 604   | 1   | 7  | 7  | -   | -                  | 51 Air transport                                       |
| 52 Skladiščenje in spremljaj. prometne dej.            | 10.113  | 9.796   | 9.616   | 180   | 317  | 317  | -   | -                  | 52 Whse. and support act. for transportation           |
| 53 Poštna in kurirska dej.                             | 7.440   | 7.144   | 7.047   | 98  | 296  | 270  | 27  | -                  | 53 Postal and courier activities                       |

- ni pojava/no occurrence of event

z statistično zaupno/confidential



**Tabela 3: Delovno aktivno prebivalstvo po področjih dejavnosti, Slovenija, 2011 (nadaljevanje)**  
Table 3: Persons in employment by activity, Slovenia, 2011 (continued)

| Dejavnost   | Delovno aktivno prebivalstvo<br>Persons in employment | Zaposlene osebe<br>Persons in paid employment |  |   | Samozaposlene osebe<br>Self employed persons |  |  | kmetije<br>farmers | Activities  |
|---|---|---|--|---|--|--|--|--------------------|---|
|   |   | skupaj<br>total                               | pri pravnih osebah<br>by legal persons | pri fizičnih osebah<br>by natural persons | skupaj<br>total                              | samo-stojni podjetniki posamezniki<br>individual private entrepreneurs | osebe, ki opravljajo poklicno dejavnost<br>own account workers |                    |   |
| <b>I Gostinstvo</b>                                   | 32.461  | 28.238  | 20.152                                 | 8.086                                     | 4.222  | 4.199  | -  | 23                 | <b>I Accommodation and food ser. activities</b>       |
| 55 Gostinske nastanitvene dej.                        | 10.296  | 10.055  | 9.613                                  | 442                                       | 241  | 229  | -  | 12                 | 55 Accommodation                                      |
| 56 Dej. strežbe jedi in pijač                         | 22.165  | 18.184  | 10.540                                 | 7.644                                     | 3.982  | 3.970  | -  | 11                 | 56 Food and beverage service activities               |
| <b>J Informacijske in komunikacijske dej.</b>         | 22.659  | 20.544  | 20.290                                 | 254                                       | 2.115  | 2.065  | 51   | -                  | <b>J Information and communication</b>                |
| 58 Založništvo  | 3.341   | 3.263   | 3.236                                  | 26  | 79   | 79   | -  | -                  | 58 Publishing activities                              |
| 59 Dej. v zvezi s filmi, video in zvočn. zap.         | 1.166   | 798   | 775                                    | 22  | 368  | 360  | 9  | -                  | 59 Motion pict., video, TV. prd., music. publ.        |
| 60 Radijska in televizijska dej.                      | 2.489   | 2.363   | 2.356                                  | 8   | 126  | 126  | -  | -                  | 60 Programming and broadcasting activities            |
| 61 Telekomunikacijske dej.                            | 4.644   | 4.579   | 4.556                                  | 24  | 65   | 65   | -  | -                  | 61 Telecommunications                                 |
| 62 Rač. programir., svetovanje idr. pov. dej.         | 9.522   | 8.303   | 8.153                                  | 150                                       | 1.220  | 1.219  | 1  | -                  | 62 Comp. progr., consult., rel. act.                  |
| 63 Dr. informacijske dejavnosti                       | 1.496   | 1.238   | 1.214                                  | 24  | 258  | 217  | 41   | -                  | 63 Information service activities                     |
| <b>K Finančne in zavarovalniške dej.</b>              | 24.181  | 23.444  | 23.258                                 | 186                                       | 738  | 738  | -  | -                  | <b>K Financial and insurance activities</b>           |
| 64 Dej. fin. stor., rz. zavarov. in pok. skl.         | 15.124  | 15.108  | 15.106                                 | 2   | 17   | 17   | -  | -                  | 64 Fin. ser. act., exc. insur., pension funding       |
| 65 Dej. zav., poz. in pok. skl., rz. obv. soc. var.   | 6.127   | 6.119   | 6.119                                  | 1   | 7  | 7  | -  | -                  | 65 Insur., reins., pen. fund., exc. com. soc. sec.    |
| 66 Pom. dej. za fin. in zavarov. stor.                | 2.930   | 2.216   | 2.033                                  | 183                                       | 714  | 714  | -  | -                  | 66 Act. aux. to fin. ser., exc. insur., pen. fund.    |
| <b>L Poslovanje z nepremičninami</b>                  | 4.108   | 3.813   | 3.701                                  | 112                                       | 295  | 295  | -  | -                  | <b>L Real estate activities</b>                       |
| 68 Poslovanje z nepremičninami                        | 4.108   | 3.813   | 3.701                                  | 112                                       | 295  | 295  | -  | -                  | 68 Real estate activities                             |
| <b>M Strokovne, znanstvene in tehnične dej.</b>       | 47.966  | 39.325  | 36.184                                 | 3.141                                     | 8.641  | 6.977  | 1.664  | -                  | <b>M Professional, scientific, technical act.</b>     |
| 69 Pravne in računovodske dej.                        | 9.760   | 7.273   | 5.253                                  | 2.020                                     | 2.487  | 1.425  | 1.062  | -                  | 69 Legal and accounting activities                    |
| 70 Dej. uprav podjetij; podjet. in posl. svet.        | 9.755   | 7.807   | 7.522                                  | 285                                       | 1.949  | 1.948  | 1  | -                  | 70 Act. of head offices; manag. consult. act.         |
| 71 Arhit. in teh. projekt.; teh. preiz., analiz.      | 14.516  | 12.687  | 12.256                                 | 431                                       | 1.829  | 1.391  | 438  | -                  | 71 Arch., engin. act.; tech. testing, analyses        |
| 72 Znanstvena raziskovalna in razvojna dej.           | 6.531   | 6.388   | 6.373                                  | 15  | 143  | 115  | 28   | -                  | 72 Scientific research and development                |
| 73 Oglaševanje in raziskovanje trga                   | 3.064   | 2.403   | 2.317                                  | 86  | 661  | 659  | 2  | -                  | 73 Advertising and market research                    |
| 74 Dr. strokovne in tehnične dej.                     | 3.488   | 1.939   | 1.687                                  | 253                                       | 1.549  | 1.417  | 132  | -                  | 74 Oth. professional, scientific, tech. act.          |
| 75 Veterinarstvo                                      | 851   | 828   | 776                                    | 52  | 23   | 22   | 1  | -                  | 75 Veterinary activities                              |
| <b>N Druge raznovrstne poslovne dej.</b>              | 26.392  | 24.345  | 23.156                                 | 1.189                                     | 2.047  | 2.026  | 21   | -                  | <b>N Administrative and support service act.</b>      |
| 77 Dajanje v najem in zakup                           | 649   | 538   | 491                                    | 48  | 110  | 110  | -  | -                  | 77 Rental and leasing activities                      |
| 78 Zaposlovalne dejavnosti                            | 6.639   | 6.627   | 6.586                                  | 41  | 13   | 13   | -  | -                  | 78 Employment activities                              |
| 79 Dej. potov. ag., org. pot. in pov. dej.            | 1.789   | 1.552   | 1.477                                  | 75  | 237  | 237  | -  | -                  | 79 Travel agency, tour operator, rel. act.            |
| 80 Varovanje in poizvedovalne dej.                    | 6.887   | 6.860   | 6.854                                  | 6   | 28   | 17   | 10   | -                  | 80 Security and investigation activities              |
| 81 Dej. oskrbe stavb in okolice                       | 7.972   | 6.918   | 6.042                                  | 876                                       | 1.054  | 1.054  | -  | -                  | 81 Services to buildings and landscape act.           |
| 82 Pisarniške in spremljaj. posl. stor. dej.          | 2.456   | 1.851   | 1.707                                  | 144                                       | 605  | 595  | 11   | -                  | 82 Office admin., oth. business sup. act.             |
| <b>O Javna uprava in obramba; obv. soc. varnosti</b>  | 51.353  | 51.332  | 51.330                                 | 3   | 22   | 22   | -  | -                  | <b>O Public admin., defence; compulsory soc. sec.</b> |
| 84 Dej. javne upr. in obram.; dej. obv. soc. varnosti | 51.353  | 51.332  | 51.330                                 | 3   | 22   | 22   | -  | -                  | 84 Public admin., defence; compulsory soc. sec.       |
| <b>P Izobraževanje</b>                                | 64.690  | 63.510  | 63.346                                 | 164                                       | 1.180  | 1.071  | 109  | -                  | <b>P Education</b>                                    |
| 85 Izobraževanje                                      | 64.690  | 63.510  | 63.346                                 | 164                                       | 1.180  | 1.071  | 109  | -                  | 85 Education  |
| <b>Q Zdravstvo in socialno varstvo</b>                | 54.124  | 52.259  | 50.824                                 | 1.435                                     | 1.866  | 544  | 1.322  | -                  | <b>Q Human health and social work activities</b>      |
| 86 Zdravstvo  | 37.861  | 36.250  | 34.856                                 | 1.394                                     | 1.612  | 410  | 1.202  | -                  | 86 Human health activities                            |
| 87 Socialno varstvo z nastanitvijo                    | 11.990  | 11.868  | 11.859                                 | 9   | 122  | 2  | 120  | -                  | 87 Residential care activities                        |
| 88 Socialno varstvo brez nastanitve                   | 4.273   | 4.141   | 4.109                                  | 32  | 132  | 132  | -  | -                  | 88 Social work act. without accommodation             |
| <b>R Kulturne, razvedrilne in rekreac. dej.</b>       | 13.896  | 10.388  | 10.248                                 | 140                                       | 3.508  | 1.146  | 2.362  | -                  | <b>R Arts, entertainment and recreation</b>           |
| 90 Kulturne in razvedrilne dej.                       | 5.194   | 2.522   | 2.452                                  | 71  | 2.672  | 685  | 1.987  | -                  | 90 Creative, arts and entertainment act.              |
| 91 Dej. knjižnic, arhivov, muzej, idr. kult. dej.     | 3.397   | 3.381   | 3.378                                  | 4   | 15   | 14   | 2  | -                  | 91 Libraries, archives, museums, oth. cul. act.       |
| 92 Prirrejanje iger na srečo                          | 2.440   | 2.431   | 2.429                                  | 2   | 9  | 9  | -  | -                  | 92 Gambling and betting activities                    |
| 93 Športne idr. dej. za prosti čas                    | 2.866   | 2.053   | 1.990                                  | 63  | 813  | 439  | 373  | -                  | 93 Sports, amusement and recreation act.              |
| <b>S Druge dejavnosti</b>                             | 13.268  | 8.020   | 5.624                                  | 2.395                                     | 5.248  | 4.338  | 910  | -                  | <b>S Other service activities</b>                     |
| 94 Dej. članskih organizacij                          | 3.622   | 2.711   | 2.711                                  | -   | 911  | 3  | 908  | -                  | 94 Activities of membership organizations             |
| 95 Popravila rač. in izd. za široko rabo              | 1.503   | 855   | 632                                    | 223                                       | 647  | 647  | -  | -                  | 95 Repair of comp., personal, household goods         |
| 96 Dr. storitvene dej.                                | 8.144   | 4.454   | 2.281                                  | 2.172                                     | 3.690  | 3.688  | 2  | -                  | 96 Oth. personal service activities                   |
| <b>T Gospod. z zap. hiš. os.; prz. za last. rabo</b>  | 558   | 558   | -                                      | 558                                       | 1  | -  | -  | -                  | <b>T Act. of hold. as empl.; prd. act. of hold</b>    |
| 97 Dej. gospod. z zaposlenim hiš. os.                 | 558   | 558   | -                                      | 558                                       | 1  | -  | -  | -                  | 97 Act. of hold. as employ. of dom. personnel         |

- ni pojava/no occurrence of event  
z statistično zaupno/confidential

Vir/Source: SURS (SRDAP, ADS/LFS)



**Tabela 4: Delovno aktivno prebivalstvo po statističnih regijah delovnega mesta in prebivališča, Slovenija, 2011**

Table 4: Persons in employment by statistical region of employment and residence, Slovenia, 2011

| Statistična regija<br>Statistical region | Po delovnem mestu<br>Of employment                             |  |  |  |   |                    | Po prebivališču<br>Of residence                                |   | Stopnja<br>registrirane<br>brezposel-<br>nosti<br>Registered<br>unem-<br>ployment<br>rate<br>% |
|--|--|--|--|--|---|--------------------|--|---|--|
|  | delovno<br>aktivno<br>prebivalstvo<br>persons in<br>employment | zaposlene<br>osebe<br>persons in<br>paid<br>employment | samozaposlene osebe<br>self employed persons |  |   |                    | delovno<br>aktivno<br>prebivalstvo<br>persons in<br>employment | registrirano<br>brezposelni<br>registered<br>unemployed |  |
|  |  |  | skupaj<br>total                              | samostojni<br>podjetniki<br>posamezniki<br>individual<br>private<br>entrepre-<br>neurs | osebe, ki<br>opravljajo<br>poklicno<br>dejavnost<br>own<br>account<br>workers | kmetije<br>farmers |  |   |  |
| <b>Slovenija/Slovenia</b>                | <b>823.967</b>   | <b>729.050</b>   | <b>94.917</b>                                | <b>54.575</b>  | <b>6.684</b>  | <b>33.659</b>      | <b>823.967</b>   | <b>110.692</b>  | <b>11,8</b>  |
| Pomurska                                 | 39.750   | 32.045   | 7.705  | 2.531  | 258   | 4.917              | 43.945   | 9.665   | 18,0   |
| Podravska                                | 119.444  | 103.719  | 15.725                                       | 8.344  | 790   | 6.592              | 122.915  | 20.830  | 14,5   |
| Koroška                                  | 24.260   | 20.988   | 3.271  | 1.868  | 121   | 1.282              | 28.057   | 4.303   | 13,3   |
| Savinjska                                | 102.430  | 89.371   | 13.060                                       | 6.547  | 622   | 5.891              | 105.746  | 15.358  | 12,7   |
| Zasavska                                 | 12.026   | 10.720   | 1.306  | 840  | 85  | 381                | 16.825   | 2.586   | 13,3   |
| Spodnjeposavska                          | 23.199   | 19.053   | 4.147  | 1.804  | 134   | 2.208              | 28.272   | 4.367   | 13,4   |
| Jugovzhodna Slovenija                    | 52.105   | 45.647   | 6.458  | 3.206  | 306   | 2.946              | 58.976   | 7.735   | 11,6   |
| Osrednjeslovenska                        | 272.896  | 250.815  | 22.081                                       | 14.715   | 3.008   | 4.358              | 221.471  | 24.255  | 9,9  |
| Gorenjska                                | 69.642   | 61.720   | 7.922  | 5.579  | 525   | 1.818              | 82.197   | 7.963   | 8,8  |
| Notranjsko-kraška                        | 16.970   | 14.790   | 2.180  | 1.357  | 110   | 713                | 22.207   | 2.457   | 10,0   |
| Goriška                                  | 45.535   | 39.714   | 5.822  | 3.697  | 364   | 1.760              | 47.305   | 5.228   | 10,0   |
| Obalno-kraška                            | 45.710   | 40.468   | 5.241  | 4.088  | 360   | 793                | 46.051   | 4.873   | 9,6  |
| Izven RS/Outside RS                      | -  | -  | -  | -  | -   | -                  | -  | 1.073   | -  |
| <b>Indeksi/Indices (2010 = 100)</b>      |  |  |  |  |   |                    |  |   |  |
| <b>Slovenija/Slovenia</b>                | <b>98,7</b>  | <b>97,6</b>  | <b>108,1</b>                                 | <b>103,0</b>   | <b>97,8</b>   | <b>120,1</b>       | <b>98,7</b>  | <b>110,1</b>  | <b>110,2</b>   |
| Pomurska                                 | 101,4  | 98,9   | 113,3  | 102,4  | 97,2  | 120,9              | 101,1  | 95,0  | 95,0   |
| Podravska                                | 98,7   | 97,2   | 109,9  | 101,5  | 97,6  | 125,0              | 98,4   | 107,0   | 107,5  |
| Koroška                                  | 98,6   | 97,4   | 106,6  | 105,7  | 98,8  | 108,7              | 99,5   | 101,4   | 101,6  |
| Savinjska                                | 98,3   | 97,1   | 108,0  | 102,6  | 97,3  | 116,2              | 99,1   | 107,2   | 107,1  |
| Zasavska                                 | 97,2   | 96,4   | 104,5  | 99,2   | 101,9   | 119,0              | 97,2   | 110,5   | 111,9  |
| Spodnjeposavska                          | 98,2   | 95,7   | 111,5  | 102,3  | 99,6  | 121,4              | 99,0   | 109,7   | 109,4  |
| Jugovzhodna Slovenija                    | 98,1   | 96,8   | 107,8  | 101,9  | 95,7  | 116,7              | 98,6   | 116,3   | 115,8  |
| Osrednjeslovenska                        | 99,1   | 98,4   | 107,2  | 104,1  | 98,7  | 127,6              | 98,5   | 116,2   | 116,1  |
| Gorenjska                                | 98,7   | 97,6   | 108,9  | 106,1  | 95,7  | 123,9              | 98,8   | 108,8   | 109,2  |
| Notranjsko-kraška                        | 95,2   | 93,6   | 107,4  | 102,5  | 98,1  | 120,0              | 98,2   | 117,4   | 117,5  |
| Goriška                                  | 97,9   | 97,1   | 103,7  | 102,1  | 95,6  | 109,3              | 97,8   | 115,5   | 116,3  |
| Obalno-kraška                            | 98,0   | 97,4   | 102,7  | 101,0  | 96,2  | 116,3              | 97,5   | 120,9   | 121,7  |

- ni pojava/no occurrence of event

Vir/Source: SURS (SRDAP, ADS/LFS)



**Tabela 5: Delovno aktivno prebivalstvo po občinah delovnega mesta in prebivališča, Slovenija, 2011**

Table 5: Persons in employment by municipality of employment and residence, Slovenia, 2011

| Občina<br>Municipality    | Po delovnem mestu<br>Of employment                                  |   |  |   |   |                    | Po prebivališču<br>Of residence                                     |   | Stopnja<br>registrirane<br>brezposel-<br>nosti<br>Registered<br>unem-<br>ployment<br>rate<br>% |
|---------------------------|---|---|--|---|---|--------------------|---|---|--|
|                           | delovno<br>aktivno<br>prebivalstvo<br>persons in<br>employ-<br>ment | zaposlene<br>osebe<br>persons in<br>paid<br>employ-<br>ment | samozaposlene osebe<br>self employed persons |   |   |                    | delovno<br>aktivno<br>prebivalstvo<br>persons in<br>employ-<br>ment | registrirano<br>brezposelni<br>registered<br>unemployed |  |
|                           |   |   | skupaj<br>total                              | samostojni<br>podjetniki<br>individual<br>private<br>entrepre-<br>neurs | osebe, ki<br>opravljajo<br>poklicno<br>dejavnost<br>own<br>account<br>workers | kmetije<br>farmers |   |   |  |
| <b>Slovenija/Slovenia</b> | <b>823.967</b>  | <b>729.050</b>  | <b>94.917</b>                                | <b>54.575</b>   | <b>6.684</b>  | <b>33.659</b>      | <b>823.967</b>  | <b>110.692</b>  | <b>11,8</b>  |
| Ajdovščina                | 6.347   | 5.559   | 787  | 598   | 57  | 133                | 7.475   | 1.021   | 12,0   |
| Apače                     | 529   | 326   | 203  | 71  | 2   | 130                | 1.218   | 253   | 17,2   |
| Beltinci                  | 1.534   | 1.094   | 440  | 166   | 11  | 263                | 3.247   | 682   | 17,3   |
| Benedikt                  | 394   | 216   | 178  | 41  | 6   | 131                | 1.000   | 92  | 8,4  |
| Bistrica ob Sotli         | 390   | 214   | 175  | 40  | 2   | 134                | 570   | 77  | 11,9   |
| Bled                      | 3.130   | 2.684   | 446  | 325   | 45  | 76                 | 3.166   | 265   | 7,7  |
| Bloke                     | 525   | 379   | 146  | 42  | 2   | 103                | 695   | 62  | 8,1  |
| Bohinj                    | 1.317   | 1.005   | 312  | 184   | 8   | 120                | 2.053   | 176   | 7,9  |
| Borovnica                 | 766   | 610   | 156  | 91  | 11  | 54                 | 1.757   | 174   | 9,0  |
| Bovec                     | 1.078   | 893   | 185  | 119   | 5   | 62                 | 1.271   | 127   | 9,1  |
| Braslovče                 | 894   | 564   | 329  | 136   | 8   | 185                | 2.215   | 246   | 10,0   |
| Brdra                     | 1.001   | 562   | 439  | 128   | 16  | 296                | 2.117   | 186   | 8,1  |
| Brezovica                 | 2.334   | 1.880   | 454  | 323   | 31  | 99                 | 4.833   | 407   | 7,8  |
| Brežice                   | 7.478   | 5.925   | 1.553  | 616   | 43  | 894                | 9.508   | 1.482   | 13,5   |
| Cankova                   | 393   | 208   | 185  | 47  | 6   | 131                | 651   | 190   | 22,5   |
| Celje                     | 29.837  | 27.921  | 1.916  | 1.395   | 204   | 316                | 19.141  | 3.265   | 14,6   |
| Cerkije na Gorenjskem     | 2.824   | 2.427   | 396  | 226   | 9   | 161                | 2.943   | 224   | 7,1  |
| Cerknica                  | 3.519   | 3.051   | 468  | 288   | 22  | 159                | 4.898   | 510   | 9,4  |
| Cerkno                    | 1.695   | 1.436   | 259  | 104   | 6   | 149                | 2.217   | 114   | 4,9  |
| Cerkvenjak                | 385   | 199   | 187  | 39  | 1   | 147                | 838   | 72  | 7,9  |
| Cikulane                  | 342   | 178   | 164  | 34  | 2   | 127                | 915   | 142   | 13,4   |
| Črenšovci                 | 911   | 647   | 264  | 87  | 3   | 174                | 1.541   | 396   | 20,5   |
| Črna na Koroškem          | 736   | 623   | 113  | 54  | 2   | 58                 | 1.273   | 152   | 10,7   |
| Črnomelj                  | 4.730   | 3.995   | 734  | 294   | 27  | 414                | 5.962   | 1.076   | 15,3   |
| Destričnik                | 397   | 212   | 184  | 46  | 6   | 132                | 1.102   | 141   | 11,4   |
| Divača                    | 1.307   | 1.139   | 168  | 108   | 5   | 55                 | 1.689   | 142   | 7,8  |
| Dobje                     | 159   | 90  | 69   | 21  | -   | 48                 | 402   | 38  | 8,5  |
| Dobrepolje                | 1.032   | 796   | 237  | 110   | 6   | 121                | 1.619   | 123   | 7,1  |
| Dobrna                    | 567   | 439   | 128  | 40  | 1   | 88                 | 895   | 93  | 9,4  |
| Dobrova - Polhov Gradec   | 1.359   | 880   | 480  | 214   | 20  | 246                | 3.074   | 209   | 6,4  |
| Dobrovnik/Dobronak        | 241   | 174   | 68   | 24  | 3   | 41                 | 460   | 136   | 22,9   |
| Dol pri Ljubljani         | 1.155   | 934   | 222  | 151   | 17  | 55                 | 2.415   | 186   | 7,1  |
| Dolenjske Toplice         | 694   | 566   | 128  | 71  | 8   | 49                 | 1.432   | 158   | 9,9  |
| Domžale                   | 10.756  | 9.379   | 1.377  | 1.109   | 122   | 147                | 14.505  | 1.432   | 9,0  |
| Dornava                   | 834   | 657   | 177  | 59  | 3   | 116                | 1.084   | 139   | 11,4   |
| Dravograd                 | 2.965   | 2.509   | 456  | 239   | 7   | 210                | 3.600   | 529   | 12,8   |
| Duplek                    | 935   | 536   | 399  | 203   | 13  | 183                | 2.770   | 424   | 13,3   |
| Gorenja vas - Poljane     | 1.375   | 954   | 421  | 182   | 11  | 228                | 3.005   | 166   | 5,2  |
| Gorišnica                 | 869   | 615   | 254  | 96  | 3   | 155                | 1.648   | 190   | 10,4   |
| Gorje                     | 452   | 295   | 157  | 123   | 6   | 29                 | 1.110   | 86  | 7,2  |
| Gornja Radgona            | 4.368   | 3.850   | 518  | 246   | 12  | 261                | 3.258   | 580   | 15,1   |
| Gornji Grad               | 527   | 343   | 185  | 74  | 6   | 105                | 976   | 129   | 11,7   |
| Gornji Petrovci           | 529   | 240   | 289  | 27  | 5   | 257                | 875   | 151   | 14,7   |
| Grad                      | 386   | 137   | 249  | 29  | 4   | 217                | 796   | 153   | 16,1   |
| Grosuplje                 | 5.890   | 5.092   | 798  | 497   | 46  | 256                | 8.485   | 907   | 9,7  |
| Hajdina                   | 624   | 435   | 189  | 99  | 5   | 85                 | 1.523   | 185   | 10,8   |
| Hoče - Slivnica           | 3.643   | 3.186   | 458  | 317   | 16  | 125                | 4.303   | 694   | 13,9   |
| Hodoš/Hodos               | 56  | 18  | 38   | 1   | 1   | 36                 | 111   | 27  | 19,3   |
| Horjul                    | 954   | 749   | 205  | 105   | 8   | 92                 | 1.271   | 74  | 5,5  |

- ni pojava/no occurrence of event



**Tabela 5: Delovno aktivno prebivalstvo po občinah delovnega mesta in prebivališča, Slovenija, 2011 (nadaljevanje)**  
**Table 5: Persons in employment by municipality of employment and residence, Slovenia, 2011 (continued)**

| Občina<br>Municipality | Po delovnem mestu<br>Of employment                                  |   |  |   |   |                    | Po prebivališču<br>Of residence                                     |   | Stopnja<br>registrirane<br>brezposel-<br>nosti<br>Registered<br>unem-<br>ployment<br>rate<br>% |
|------------------------|---|---|--|---|---|--------------------|---|---|--|
|                        | delovno<br>aktivno<br>prebivalstvo<br>persons in<br>employ-<br>ment | zaposlene<br>osebe<br>persons in<br>paid<br>employ-<br>ment | samozaposlene osebe<br>self employed persons |   |   |                    | delovno<br>aktivno<br>prebivalstvo<br>persons in<br>employ-<br>ment | registrirano<br>brezposelni<br>registered<br>unemployed |  |
|                        |   |   | skupaj<br>total                              | samostojni<br>podjetniki<br>individual<br>private<br>enterpre-<br>neurs | osebe, ki<br>opravljajo<br>poklicno<br>dejavnost<br>own<br>account<br>workers | kmetije<br>farmers |   |   |  |
| Hrastnik               | 2.409   | 2.185   | 224  | 149   | 20  | 55                 | 3.685   | 573   | 13,5   |
| Hrpelje - Kozina       | 1.538   | 1.326   | 212  | 131   | 6   | 76                 | 1.789   | 170   | 8,7  |
| Idrija                 | 5.484   | 5.018   | 466  | 308   | 34  | 124                | 4.993   | 350   | 6,6  |
| Ig                     | 1.530   | 1.208   | 322  | 165   | 17  | 141                | 2.983   | 256   | 7,9  |
| Ilirska Bistrica       | 3.709   | 3.040   | 669  | 395   | 28  | 246                | 5.639   | 654   | 10,4   |
| Ivančna Gorica         | 4.145   | 3.167   | 978  | 398   | 24  | 556                | 7.088   | 602   | 7,8  |
| Izola/Isola            | 5.607   | 4.843   | 763  | 684   | 44  | 36                 | 6.515   | 856   | 11,6   |
| Jesenice               | 6.951   | 6.491   | 460  | 408   | 29  | 23                 | 8.537   | 986   | 10,4   |
| Jezerško               | 125   | 96  | 30   | 17  | -   | 13                 | 252   | 15  | 5,5  |
| Juršinci               | 353   | 130   | 223  | 40  | 3   | 180                | 951   | 130   | 12,0   |
| Kamnik                 | 7.655   | 6.364   | 1.291  | 785   | 106   | 400                | 12.312  | 1.147   | 8,5  |
| Kanal                  | 1.290   | 1.010   | 280  | 142   | 11  | 127                | 2.161   | 269   | 11,1   |
| Kidričevo              | 4.374   | 3.985   | 389  | 167   | 8   | 214                | 2.690   | 303   | 10,1   |
| Kobarid                | 979   | 722   | 257  | 117   | 6   | 133                | 1.606   | 147   | 8,4  |
| Kobilje                | 71  | 49  | 22   | 5   | -   | 17                 | 217   | 51  | 19,0   |
| Kočevo                 | 4.387   | 3.999   | 388  | 314   | 30  | 43                 | 6.039   | 1.432   | 19,2   |
| Komen                  | 720   | 544   | 177  | 98  | 7   | 72                 | 1.437   | 141   | 8,9  |
| Komenda                | 1.740   | 1.438   | 302  | 214   | 16  | 72                 | 2.502   | 202   | 7,5  |
| Koper/Capodistria      | 23.873  | 21.606  | 2.267  | 1.812   | 190   | 265                | 22.022  | 2.248   | 9,3  |
| Kostanjevica na Krki   | 897   | 670   | 227  | 60  | 4   | 163                | 1.099   | 131   | 10,7   |
| Kostel                 | 157   | 129   | 27   | 13  | 2   | 12                 | 220   | 41  | 15,6   |
| Kozje                  | 733   | 365   | 368  | 72  | 4   | 292                | 1.279   | 204   | 13,8   |
| Kranj                  | 23.984  | 22.084  | 1.900  | 1.477   | 166   | 256                | 22.692  | 2.612   | 10,3   |
| Kranjska Gora          | 1.318   | 1.133   | 185  | 137   | 6   | 43                 | 2.054   | 188   | 8,4  |
| Križevci               | 997   | 712   | 285  | 78  | 5   | 202                | 1.391   | 204   | 12,8   |
| Krško                  | 9.215   | 7.893   | 1.323  | 676   | 57  | 590                | 10.460  | 1.689   | 13,9   |
| Kungota                | 912   | 653   | 259  | 123   | 6   | 130                | 1.762   | 337   | 16,1   |
| Kuzma                  | 278   | 154   | 123  | 20  | 2   | 102                | 410   | 129   | 23,9   |
| Laško                  | 4.329   | 3.546   | 783  | 297   | 17  | 469                | 5.427   | 698   | 11,4   |
| Lenart                 | 4.716   | 4.225   | 491  | 212   | 11  | 268                | 3.134   | 333   | 9,6  |
| Lendava/Lendva         | 3.743   | 3.294   | 450  | 190   | 25  | 234                | 4.088   | 1.153   | 22,0   |
| Litija                 | 3.348   | 2.614   | 734  | 394   | 21  | 318                | 6.447   | 853   | 11,7   |
| Ljubljana              | 203.168   | 192.889   | 10.279                                       | 7.448   | 2.304   | 527                | 112.279   | 13.938  | 11,0   |
| Ljubno                 | 912   | 735   | 178  | 78  | 3   | 97                 | 1.077   | 134   | 11,1   |
| Ljutomer               | 4.317   | 3.589   | 728  | 289   | 18  | 421                | 4.437   | 838   | 15,9   |
| Log - Dragomer         | 688   | 573   | 116  | 95  | 11  | 10                 | 1.435   | 129   | 8,2  |
| Logatec                | 3.887   | 3.232   | 655  | 415   | 29  | 211                | 5.903   | 526   | 8,2  |
| Loška dolina           | 1.552   | 1.435   | 116  | 52  | 4   | 61                 | 1.697   | 166   | 8,9  |
| Loški Potok            | 241   | 177   | 65   | 34  | 2   | 29                 | 766   | 75  | 8,9  |
| Lovrenc na Pohorju     | 495   | 374   | 121  | 80  | 4   | 38                 | 1.195   | 196   | 14,1   |
| Luče                   | 345   | 199   | 146  | 52  | 3   | 91                 | 556   | 83  | 13,0   |
| Lukovica               | 1.226   | 945   | 281  | 148   | 20  | 113                | 2.348   | 175   | 6,9  |
| Majšperk               | 634   | 401   | 233  | 93  | 9   | 131                | 1.621   | 187   | 10,3   |
| Makole                 | 328   | 201   | 127  | 46  | 3   | 78                 | 842   | 119   | 12,3   |
| Maribor                | 59.330  | 55.615  | 3.715  | 3.050   | 417   | 247                | 39.307  | 8.293   | 17,4   |
| Markovci               | 833   | 514   | 319  | 127   | 4   | 188                | 1.694   | 193   | 10,2   |
| Medvode                | 3.637   | 3.052   | 585  | 427   | 48  | 111                | 6.403   | 616   | 8,8  |
| Mengeš                 | 2.247   | 1.932   | 315  | 264   | 33  | 18                 | 3.037   | 282   | 8,5  |
| Metlika                | 3.001   | 2.590   | 411  | 214   | 12  | 184                | 3.473   | 601   | 14,8   |
| Mežica                 | 1.254   | 1.139   | 115  | 80  | 2   | 34                 | 1.336   | 192   | 12,5   |

- ni pojava/no occurrence of event





**Tabela 5: Delovno aktivno prebivalstvo po občinah delovnega mesta in prebivališča, Slovenija, 2011 (nadaljevanje)**

Table 5: Persons in employment by municipality of employment and residence, Slovenia, 2011 (continued)

| Občina<br>Municipality    | Po delovnem mestu<br>Of employment                                  |   |  |  |   |                    | Po prebivališču<br>Of residence                                     |   | Stopnja<br>registrirane<br>brezposel-<br>nosti<br>Registered<br>unem-<br>ployment<br>rate<br>% |
|---------------------------|---|---|--|--|---|--------------------|---|---|--|
|                           | delovno<br>aktivno<br>prebivalstvo<br>persons in<br>employ-<br>ment | zaposlene<br>osebe<br>persons in<br>paid<br>employ-<br>ment | samozaposlene osebe<br>self employed persons |  |   |                    | delovno<br>aktivno<br>prebivalstvo<br>persons in<br>employ-<br>ment | registrirano<br>brezposelni<br>registered<br>unemployed |  |
|                           |   |   | skupaj<br>total                              | samosstojni<br>podjetniki<br>individual<br>private<br>entrepre-<br>neurs | osebe, ki<br>opravljajo<br>poklicno<br>dejavnost<br>own<br>account<br>workers | kmetije<br>farmers |   |   |  |
| Miklavž na Dravskem polju | 1.179   | 932   | 247  | 195  | 9   | 42                 | 2.457   | 420   | 14,6   |
| Miren - Kostanjevica      | 1.174   | 956   | 218  | 167  | 11  | 40                 | 1.869   | 215   | 10,3   |
| Mirna Peč                 | 361   | 197   | 164  | 43   | 7   | 114                | 1.247   | 113   | 8,3  |
| Mislinja                  | 663   | 411   | 252  | 100  | 2   | 150                | 1.928   | 231   | 10,7   |
| Mokronog - Trebelno       | 630   | 399   | 232  | 72   | 1   | 158                | 1.248   | 124   | 9,0  |
| Moravče                   | 817   | 547   | 270  | 104  | 13  | 153                | 2.193   | 149   | 6,4  |
| Moravske Toplice          | 1.549   | 1.019   | 530  | 109  | 15  | 406                | 2.335   | 462   | 16,5   |
| Mozirje                   | 1.125   | 899   | 226  | 131  | 11  | 84                 | 1.683   | 172   | 9,3  |
| Murska Sobota             | 13.305  | 12.525  | 779  | 534  | 101   | 145                | 6.873   | 1.681   | 19,6   |
| Muta                      | 1.040   | 888   | 153  | 94   | 6   | 53                 | 1.318   | 231   | 14,9   |
| Naklo                     | 2.164   | 1.936   | 228  | 147  | 14  | 67                 | 2.041   | 179   | 8,1  |
| Nazarje                   | 1.935   | 1.771   | 164  | 73   | 16  | 75                 | 1.123   | 149   | 11,7   |
| Nova Gorica               | 14.864  | 13.372  | 1.492  | 1.084  | 146   | 262                | 12.698  | 1.480   | 10,4   |
| Novo mesto                | 22.635  | 21.245  | 1.390  | 841  | 114   | 434                | 15.366  | 1.676   | 9,8  |
| Odranci                   | 601   | 463   | 138  | 31   | 1   | 105                | 694   | 122   | 14,9   |
| Oplotnica                 | 638   | 423   | 216  | 103  | 10  | 103                | 1.668   | 177   | 9,6  |
| Ormož                     | 4.196   | 3.312   | 884  | 216  | 21  | 647                | 5.057   | 836   | 14,2   |
| Osilnica                  | 64  | 40  | 24   | 6  | -   | 18                 | 132   | 17  | 11,2   |
| Pesnica                   | 1.526   | 1.006   | 520  | 175  | 11  | 333                | 2.837   | 556   | 16,4   |
| Piran/Pirano              | 6.862   | 5.976   | 886  | 763  | 63  | 60                 | 7.233   | 814   | 10,1   |
| Pivka                     | 1.984   | 1.775   | 209  | 149  | 11  | 49                 | 2.496   | 279   | 10,0   |
| Podčetrtek                | 1.037   | 722   | 315  | 100  | 7   | 209                | 1.380   | 184   | 11,8   |
| Podlehnik                 | 521   | 367   | 155  | 39   | 5   | 111                | 805   | 133   | 14,2   |
| Podvelka                  | 460   | 325   | 135  | 59   | 0   | 75                 | 897   | 182   | 16,9   |
| Poljčane                  | 1.211   | 999   | 212  | 124  | 9   | 79                 | 1.687   | 251   | 12,9   |
| Polzela                   | 1.428   | 1.178   | 250  | 119  | 16  | 115                | 2.402   | 320   | 11,8   |
| Postojna                  | 5.681   | 5.111   | 570  | 430  | 45  | 96                 | 6.783   | 787   | 10,4   |
| Prebold                   | 1.630   | 1.411   | 219  | 132  | 15  | 72                 | 2.084   | 280   | 11,9   |
| Preddvor                  | 707   | 534   | 173  | 108  | 5   | 60                 | 1.369   | 129   | 8,6  |
| Prevalje                  | 1.580   | 1.324   | 256  | 153  | 8   | 96                 | 2.561   | 340   | 11,7   |
| Ptuj                      | 11.497  | 10.430  | 1.068  | 743  | 93  | 232                | 8.989   | 1.394   | 13,4   |
| Puconci                   | 1.287   | 703   | 584  | 114  | 4   | 466                | 2.299   | 548   | 19,2   |
| Rače - Fram               | 1.320   | 1.038   | 283  | 184  | 10  | 89                 | 2.691   | 447   | 14,2   |
| Radeče                    | 1.099   | 953   | 145  | 73   | 6   | 67                 | 1.790   | 249   | 12,2   |
| Radenci                   | 1.380   | 1.128   | 252  | 121  | 12  | 119                | 1.964   | 332   | 14,5   |
| Radlje ob Dravi           | 1.891   | 1.569   | 322  | 215  | 15  | 92                 | 2.284   | 422   | 15,6   |
| Radovljica                | 6.463   | 5.699   | 763  | 584  | 64  | 116                | 7.347   | 676   | 8,4  |
| Ravne na Koroškem         | 5.006   | 4.598   | 408  | 254  | 27  | 126                | 4.520   | 699   | 13,4   |
| Razkrižje                 | 211   | 117   | 94   | 29   | 4   | 62                 | 502   | 79  | 13,6   |
| Rečica ob Savinji         | 539   | 380   | 159  | 71   | 4   | 84                 | 951   | 122   | 11,4   |
| Renče - Vogrsko           | 1.309   | 1.125   | 185  | 140  | 5   | 39                 | 1.700   | 200   | 10,5   |
| Ribnica                   | 3.271   | 2.795   | 477  | 258  | 22  | 197                | 3.958   | 352   | 8,2  |
| Ribnica na Pohorju        | 143   | 92  | 51   | 22   | 1   | 28                 | 403   | 87  | 17,8   |
| Rogaška Slatina           | 4.380   | 3.803   | 577  | 353  | 20  | 205                | 4.699   | 656   | 12,2   |
| Rogašovci                 | 510   | 219   | 291  | 45   | 2   | 244                | 962   | 306   | 24,1   |
| Rogatec                   | 885   | 721   | 164  | 67   | 7   | 90                 | 1.325   | 212   | 13,8   |
| Ruše                      | 1.948   | 1.725   | 224  | 186  | 12  | 26                 | 2.726   | 609   | 18,3   |
| Selnica ob Dravi          | 967   | 709   | 257  | 145  | 5   | 107                | 1.741   | 329   | 15,9   |
| Semič                     | 706   | 547   | 160  | 63   | 3   | 94                 | 1.552   | 265   | 14,6   |
| Sevnica                   | 5.609   | 4.565   | 1.044  | 452  | 31  | 561                | 7.205   | 1.065   | 12,9   |

- ni pojava/no occurrence of event



**Tabela 5: Delovno aktivno prebivalstvo po občinah delovnega mesta in prebivališča, Slovenija, 2011 (nadaljevanje)**  
**Table 5: Persons in employment by municipality of employment and residence, Slovenia, 2011 (continued)**

| Občina<br>Municipality        | Po delovnem mestu<br>Of employment                                  |   |  |   |   |                    | Po prebivališču<br>Of residence                                     |   | Stopnja<br>registrirane<br>brezposel-<br>nosti<br>Registered<br>unem-<br>ployment<br>rate<br>% |
|-------------------------------|---|---|--|---|---|--------------------|---|---|--|
|                               | delovno<br>aktivno<br>prebivalstvo<br>persons in<br>employ-<br>ment | zaposlene<br>osebe<br>persons in<br>paid<br>employ-<br>ment | samozaposlene osebe<br>self employed persons |   |   |                    | delovno<br>aktivno<br>prebivalstvo<br>persons in<br>employ-<br>ment | registrirano<br>brezposelni<br>registered<br>unemployed |  |
|                               |   |   | skupaj<br>total                              | samostojni<br>podjetniki<br>individual<br>private<br>enterpre-<br>neurs | osebe, ki<br>opravljajo<br>poklicno<br>dejavnost<br>own<br>account<br>workers | kmetije<br>farmers |   |   |  |
| Sežana                        | 5.803   | 5.035   | 768  | 492   | 46  | 230                | 5.366   | 502   | 8,6  |
| Slovenj Gradec                | 7.838   | 6.948   | 890  | 537   | 42  | 311                | 6.856   | 1.061   | 13,4   |
| Slovenska Bistrica            | 7.840   | 6.588   | 1.251  | 712   | 42  | 497                | 10.117  | 1.491   | 12,8   |
| Slovenske Konjice             | 5.180   | 4.521   | 659  | 369   | 30  | 261                | 6.034   | 842   | 12,2   |
| Sodražica                     | 369   | 276   | 93   | 63  | 4   | 27                 | 844   | 80  | 8,7  |
| Solčava                       | 136   | 81  | 54   | 17  | -   | 37                 | 184   | 27  | 12,7   |
| Središče ob Dravi             | 383   | 241   | 142  | 43  | 2   | 97                 | 838   | 132   | 13,6   |
| Starše                        | 903   | 703   | 200  | 109   | 2   | 89                 | 1.634   | 258   | 13,6   |
| Straža                        | 840   | 710   | 129  | 95  | 9   | 26                 | 1.581   | 191   | 10,8   |
| Sveta Ana                     | 343   | 121   | 222  | 39  | 2   | 182                | 903   | 92  | 9,2  |
| Sveta Trojica v Slov. goricah | 318   | 154   | 165  | 43  | 7   | 115                | 875   | 91  | 9,4  |
| Sveti Andraž v Slov. goricah  | 165   | 43  | 122  | 15  | -   | 107                | 463   | 65  | 12,3   |
| Sveti Jurij                   | 568   | 236   | 332  | 72  | 4   | 256                | 1.139   | 190   | 14,3   |
| Sveti Jurij v Slov. goricah   | 310   | 125   | 185  | 40  | 4   | 141                | 865   | 69  | 7,3  |
| Sveti Tomaž                   | 294   | 70  | 224  | 25  | 2   | 197                | 858   | 143   | 14,3   |
| Šalovci                       | 324   | 99  | 225  | 16  | 2   | 207                | 570   | 118   | 17,2   |
| Šempeter - Vrtojba            | 4.682   | 4.393   | 288  | 243   | 28  | 18                 | 2.498   | 299   | 10,7   |
| Šenčur                        | 2.329   | 1.960   | 370  | 251   | 18  | 101                | 3.494   | 260   | 6,9  |
| Šentilj                       | 2.164   | 1.751   | 413  | 176   | 10  | 227                | 3.263   | 600   | 15,5   |
| Šentjernej                    | 1.778   | 1.378   | 400  | 135   | 21  | 244                | 2.917   | 302   | 9,4  |
| Šentjur                       | 4.892   | 3.719   | 1.173  | 499   | 33  | 641                | 7.894   | 951   | 10,8   |
| Šentrupert                    | 864   | 647   | 217  | 68  | 6   | 143                | 991   | 118   | 10,7   |
| Škocjan                       | 713   | 488   | 225  | 60  | 4   | 160                | 1.373   | 174   | 11,3   |
| Škofja Loka                   | 8.030   | 7.190   | 840  | 588   | 75  | 177                | 9.328   | 760   | 7,5  |
| Škofljica                     | 2.043   | 1.680   | 362  | 263   | 22  | 77                 | 3.958   | 330   | 7,7  |
| Šmarje pri Jelšah             | 2.721   | 2.029   | 693  | 263   | 15  | 415                | 4.022   | 576   | 12,5   |
| Šmarješke Toplice             | 685   | 556   | 129  | 70  | 3   | 56                 | 1.414   | 100   | 6,6  |
| Šmartno ob Paki               | 434   | 311   | 123  | 67  | 5   | 50                 | 1.366   | 198   | 12,7   |
| Šmartno pri Litiji            | 1.150   | 845   | 305  | 139   | 6   | 160                | 2.193   | 273   | 11,1   |
| Šoštanj                       | 2.557   | 2.169   | 387  | 191   | 9   | 188                | 3.665   | 486   | 11,7   |
| Štore                         | 1.827   | 1.648   | 179  | 86  | 2   | 91                 | 1.747   | 222   | 11,3   |
| Tabor                         | 191   | 62  | 130  | 41  | 4   | 85                 | 659   | 91  | 12,1   |
| Tišina                        | 554   | 286   | 268  | 79  | 2   | 187                | 1.568   | 360   | 18,7   |
| Tolmin                        | 4.217   | 3.542   | 675  | 392   | 29  | 254                | 4.564   | 544   | 10,6   |
| Trbovlje                      | 4.675   | 4.227   | 448  | 343   | 24  | 81                 | 6.247   | 1.188   | 16,0   |
| Trebnje                       | 4.991   | 4.244   | 747  | 389   | 25  | 333                | 6.479   | 664   | 9,3  |
| Trnovska vas                  | 207   | 85  | 123  | 24  | 3   | 95                 | 546   | 55  | 9,2  |
| Trzin                         | 5.787   | 5.638   | 148  | 122   | 13  | 13                 | 1.596   | 140   | 8,1  |
| Tržič                         | 3.254   | 2.696   | 558  | 431   | 29  | 98                 | 6.092   | 787   | 11,4   |
| Turnišče                      | 633   | 454   | 179  | 48  | 6   | 125                | 1.313   | 322   | 19,7   |
| Velenje                       | 16.877  | 15.897  | 979  | 631   | 93  | 256                | 13.356  | 2.348   | 15,0   |
| Velika Polana                 | 205   | 108   | 97   | 18  | 1   | 78                 | 554   | 127   | 18,6   |
| Velike Lašče                  | 689   | 411   | 278  | 109   | 6   | 163                | 1.811   | 151   | 7,7  |
| Veržej                        | 271   | 196   | 75   | 34  | 8   | 34                 | 471   | 77  | 14,0   |
| Videm                         | 727   | 389   | 338  | 96  | 9   | 233                | 2.400   | 353   | 12,8   |
| Vipava                        | 1.418   | 1.127   | 291  | 157   | 10  | 124                | 2.136   | 277   | 11,5   |
| Vitanje                       | 485   | 285   | 201  | 43  | 5   | 152                | 987   | 117   | 10,6   |
| Vodice                        | 880   | 638   | 242  | 130   | 13  | 99                 | 2.074   | 145   | 6,5  |
| Vojnik                        | 1.832   | 1.338   | 494  | 197   | 4   | 293                | 3.488   | 369   | 9,6  |
| Vransko                       | 646   | 485   | 160  | 57  | 9   | 94                 | 965   | 130   | 11,9   |

- ni pojava/no occurrence of event



**Tabela 5: Delovno aktivno prebivalstvo po občinah delovnega mesta in prebivališča, Slovenija, 2011 (nadaljevanje)**  
Table 5: Persons in employment by municipality of employment and residence, Slovenia, 2011 (continued)

| Občina<br>Municipality | Po delovnem mestu<br>Of employment                                  |   |  |   |   |                   | Po prebivališču<br>Of residence                                     |   | Stopnja<br>registrirane<br>brezposel-<br>nosti<br>Registered<br>unem-<br>ployment<br>rate<br>% |
|------------------------|---|---|--|---|---|-------------------|---|---|--|
|                        | delovno<br>aktivno<br>prebivalstvo<br>persons in<br>employ-<br>ment | zaposlene<br>osebe<br>persons in<br>paid<br>employ-<br>ment | samozaposlene osebe<br>self employed persons |   |   |                   | delovno<br>aktivno<br>prebivalstvo<br>persons in<br>employ-<br>ment | registrirano<br>brezposelni<br>registered<br>unemployed |  |
|                        |   |   | skupaj<br>total                              | samostojni<br>podjetniki<br>individual<br>private<br>entrepre-<br>neurs | osebe, ki<br>opravljajo<br>poklicno<br>dejavnost<br>own<br>account<br>workers | kmetje<br>farmers |   |   |  |
| Vrhnika                | 4.014   | 3.326   | 689  | 496   | 46  | 147               | 6.954   | 830   | 10,7   |
| Vuzenica               | 685   | 563   | 121  | 63  | 10  | 49                | 1.082   | 176   | 14,0   |
| Zagorje ob Savi        | 4.942   | 4.308   | 634  | 349   | 41  | 245               | 6.893   | 825   | 10,7   |
| Zavrč                  | 203   | 106   | 98   | 24  | 3   | 71                | 558   | 101   | 15,3   |
| Zreče                  | 4.119   | 3.763   | 356  | 151   | 17  | 188               | 2.841   | 322   | 10,2   |
| Žalec                  | 7.784   | 6.807   | 977  | 612   | 47  | 318               | 8.565   | 1.367   | 13,8   |
| Železniki              | 2.510   | 2.185   | 325  | 153   | 16  | 157               | 2.929   | 181   | 5,8  |
| Žetale                 | 190   | 75  | 115  | 19  | 0   | 95                | 560   | 59  | 9,6  |
| Žiri                   | 2.076   | 1.867   | 209  | 121   | 13  | 75                | 2.060   | 121   | 5,5  |
| Žirovnica              | 634   | 484   | 150  | 118   | 12  | 20                | 1.725   | 153   | 8,1  |
| Žužemberk              | 989   | 668   | 321  | 102   | 7   | 212               | 1.984   | 177   | 8,2  |
| Izven RS/Outside RS    | -   | -   | -  | -   | -   | -                 | -   | 1.073   | -  |

- ni pojava/no occurrence of event

Vir/Source: SURS (SRDAP, ADS/LFS)

#### STATISTIČNO IN DRUGO ZNAMENJE

- ni pojava  
, decimalna vejica

#### KRATICE

ADS Anketa o delovni sili  
RS Republika Slovenija  
SURS Statistični urad Republike Slovenije  
SRDAP Statistični register delovno aktivnega prebivalstva

#### METODOLOŠKA POJASNILA

##### Namen statističnega raziskovanja

Namen raziskovanja je zbrati podatke o delovno aktivnem prebivalstvu, njihovem številu, sestavi, gibanju in o spremembah na področju aktivnosti prebivalstva. Podatki so pomembni za ugotavljanje stanja in sprememb na trgu dela v Sloveniji.

##### Enote opazovanja

Enote opazovanja so:

- osebe, ki delajo (zaposleni in samozaposleni) na območju Republike Slovenije in so obvezno socialno zavarovane;
- kmetje;
- registrirane brezposelne osebe.

##### Viri, zajetje in metode zbiranja podatkov

Podatke o zaposlenih osebah in samozaposlenih osebah (razen o kmetih) dobivamo iz Statističnega registra delovno aktivnega prebivalstva (SRDAP). Do leta 2005 smo dobivali podatke o osebah, zaposlenih pri pravnih osebah, iz mesečnega raziskovanja Mesečno poročilo o plačah in zaposlenih osebah v podjetjih, družbah in organizacijah (ZAP/M).

#### STATISTICAL AND OTHER SIGNS

- no occurrence of event  
, decimal point

#### ABBREVIATIONS

LFS Labour Force Survey  
RS Republic of Slovenia  
SRDAP Statistical Register of Employment

#### METHODOLOGICAL EXPLANATIONS

##### Purpose of the statistical survey

The purpose of the statistical survey is to collect data on persons in employment (their number, structure, changes) and on the changes in the field of labour force. These data are important for assessing the situation and changes on the labour market in Slovenia.

##### Observation units

Observation units are:

- persons in paid employment and self-employed persons who work on the territory of Slovenia and have compulsory social insurance,
- farmers and
- registered unemployed persons.

##### Sources, coverage and method of data collection

We obtain data on persons in paid employment and self employed persons (except farmers) from the Statistical Register of Employment (SRDAP). Until 2005 we obtained data on persons in paid employment from the Monthly Report on Earnings and Persons in Paid Employment in Enterprises, Companies and Organisations (ZAP/M).



SRDAP se dopolnjuje oz. osvežuje s podatki iz obrazcev M, to je Prijava podatkov o pokojninskem in invalidskem ter zdravstvenem zavarovanju, zavarovanju za starševsko varstvo, zavarovanju za primer brezposelnosti in o sklenitvi delovnega razmerja (M-1, M-2, M-3, M-DČ).

V **SRDAP** so zajete zaposlene osebe, ki delajo po pogodbah o zaposlitvi, in samozaposlene osebe, ki so obvezno socialno zavarovane (pokojninsko in invalidsko ter zdravstveno zavarovanje, zavarovanje za starševsko varstvo in zavarovanje za primer brezposelnosti). Med zaposlene osebe **ne štejemo oseb**, ki delajo po podjemni pogodbi (pogodbi o delu) ali avtorski pogodbi, in državljanov Republike Slovenije s stalno zaposlitvijo v slovenskih predstavništvih, na gradbiščih ipd. v tujini.

Vir podatkov o številu kmetov je **Anketa o delovni sili** (ADS), ki jo v Sloveniji izvajamo od leta 1993, od leta 1997 pa jo izvajamo četrtletno. Omenjena anketa je v skladu z navodili Mednarodne organizacije za delo (ILO) in Eurostata, zato so izsledki tega raziskovanja mednarodno primerljivi.

Od leta 2002 se za ugotavljanje porazdelitve kmetov po občinah in statističnih regijah uporabljajo podatki iz Popisa kmečkih gospodarstev 2000. Pred tem so se za izračun deležev kmetov v posameznih teritorialnih enotah uporabljali podatki iz popisa prebivalstva leta 1991. Omenjena zamenjava vira za ugotavljanje števila kmetov po različnih teritorialnih enotah je prav tako povzročila spremembo v podatkih o stopnji registrirane brezposelnosti.

Z letom 2002 smo število kmetov začeli napovedovati na podlagi modela ARIMA. Pri oblikovanju modela za leto 2011 smo upoštevali četrtletne podatke o kmetih iz ADS za obdobje od prvega četrtletja 2000 do četrtega četrtletja 2010. Do leta 2009 drugih vplivov, na primer števila delovnih dni, osamelcev ipd., nismo upoštevali, z letom 2010 pa smo začeli upoštevat vpliv sezone in osamelce.

Podatke o registriranih brezposelnih osebah nam sporoča Zavod Republike Slovenije za zaposlovanje (ZRSZ).

## DEFINICIJE IN POJASNILA

**Aktivno prebivalstvo** sestavljajo delovno aktivno prebivalstvo in registrirane brezposelne osebe.

**Delovno aktivno prebivalstvo** sestavljajo zaposlene in samozaposlene osebe, stare najmanj 15 let, ki delajo na območju Republike Slovenije.

**Zaposlene osebe**, so osebe, ki so v delovnem razmerju:

- **pri pravnih osebah** (podjetjih, družbah, zavodih, drugih organizacijah) ali pri podružnicah tujih podjetij; izvoljeni ali imenovani nosilci javne ali družbene funkcije; matere z otrokom, ki delajo po posebnih predpisih; lastniki podjetij, ki ta podjetja osebno vodijo in ki niso zavarovani iz drugega naslova; vojaki prostovoljci
- **pri fizičnih osebah**, to je pri samostojnih podjetnikih posameznikih, pri osebah, ki opravljajo poklicno dejavnost kot edini ali glavni poklic, ali pri osebah, ki uporabljajo dopolnilno delo drugih ljudi.

**Samozaposlene osebe** so:

- fizične osebe, ki opravljajo gospodarsko ali pridobitno dejavnost (samostojni podjetniki posamezniki);
- osebe, ki opravljajo poklicno dejavnost kot edini ali glavni poklic (npr. odvetniki, samostojni raziskovalci, duhovniki itd.);
- kmetje;
- vrhunski športniki in vrhunski šahisti.

**Registrirane brezposelne osebe** so osebe, stare vsaj 15 let, ki izpolnjujejo splošne zdravstvene pogoje za delo, so prijavljene na Zavodu RS za zaposlovanje, so pripravljene sprejeti zaposlitev in jo same tudi aktivno iščejo. Poleg tega niso v delovnem razmerju, niso upokojene, niso dijaki,

SRDAP is updated with data obtained from monthly M questionnaires, i.e. Registration of Data for Pension and Disability Insurance, Health Insurance, Parental Insurance and Employment Insurance (M-1, M-2, M-3, M-DČ).

**SRDAP** covers persons in paid employment who have employment contracts and self employed persons who have compulsory social insurance (pension, disability and health insurance, parental protection insurance and unemployment insurance). Persons working under copyright contracts, contracts for work/service and citizens of the Republic of Slovenia working in Slovenian enterprises, on construction sites, etc., abroad are **not covered**.

The source of the data on the number of farmers is the **Labour Force Survey** (LFS), which was in Slovenia introduced in 1993 and has been carried out quarterly since 1997. The Slovene LFS is carried out in compliance with the International Labour Organisation (ILO) and Eurostat, so that results are internationally comparable.

For the breakdown of data on farmers by municipalities and statistical regions since 2002 we have been using the 2000 Census of Agricultural Holdings data. Before 2002, for the calculation of shares for individual territorial units the data from the 1991 Census were used. The change of the source for farmers by territorial units had influence on the change of the registered unemployment rate.

In 2002 we also started to forecast the data on farmers according to the ARIMA model. In designing the model for 2011 we took into consideration quarterly data from the Labour Force Survey for the period from 1st quarter 2000 to 4th quarter 2010. Up to 2009 only influences of the ARIMA model were taken into consideration, while other influences (working days, outliers, etc.) were not. Since 2010 model we also take into consideration seasonal influences and outliers.

Data on registered unemployed persons are sent to us by the Employment Service of Slovenia.

## DEFINITIONS AND EXPLANATIONS

**Labour force** covers persons in employment and registered unemployed persons.

**Persons in employment** are persons in paid employment and self employed persons who are at least 15 years old and work on the territory of Slovenia.

**Persons in paid employment** are employed by:

- **legal persons** (enterprises, companies, institutions or other organisations) or subsidiaries of foreign enterprises, elected or appointed holders of public functions, mothers with children working under special regulations, owners of enterprises who run them personally and are not insured elsewhere, military volunteers.
- **by natural persons** (i.e. own account workers performing their activity as the only or principal occupation), and by natural persons using supplementary work of other people.

**Self employed persons** are:

- persons performing economic or gainful activity (individual private entrepreneurs),
- own account workers performing their activity as the only or principal occupation (e.g. lawyers, independent researchers, priests, etc.),
- farmers and
- top-level sportsmen and top-level chess players.

**Registered unemployed persons** are persons aged 15 or more whose health enables them to accept employment, are registered at the employment office, are willing to accept employment and are actively seeking it. In addition, they are not retired, imprisoned for more than 6



študenti, vajenci ali udeleženci izobraževanja odraslih, mlajši od 26 let, in niso na prestajanju zaporne kazni, daljše od 6 mesecev. Prav tako niso samozaposlene osebe, lastniki ali solastniki gospodarskih družb ali lastniki, zakupniki, najemniki ali drugi uporabniki kmetijskega ali gozdnega zemljišča z dobičkom iz dejavnosti oz. s katastrskim dohodkom, ki je v preteklem letu presegal zakonsko določeno višino.

**Stopnja registrirane brezposelnosti** je odstotni delež registriranih brezposelnih oseb med aktivnim prebivalstvom. Stopnja registrirane brezposelnosti po občinah in statističnih regijah je prikazana glede na prebivališče delovno aktivnih prebivalcev in registriranih brezposelnih oseb.

**Časovna točka opazovanja** je zadnji dan v mesecu. Letno povprečje predstavlja dvanajstina seštevka podatkov za vseh dvanajst mesecev leta.

#### METODOLOŠKE RAZLIKE MED REGISTRSKIMI IN ANKETNIMI PODATKI O DELOVNO AKTIVNEM PREBIVALSTVU

Registrski in anketni podatki se med seboj razlikujejo glede na:

– **vir**

Registrski podatki temeljijo na Statističnem registru delovno aktivnega prebivalstva, anketni pa na Anketi o delovni sili. Pri registrskih podatkih gre za popolno zajetje, rezultati Ankete o delovni sili pa so ocene, ki temeljijo na statističnem vzorcu.

– **poročevalsko obdobje**

Registrske podatke zajemamo mesečno, in sicer po stanju na zadnji dan v mesecu, anketni podatki pa se nanašajo na aktivnost anketirane osebe v tednu pred anketiranjem (od ponedeljka do nedelje).

– **obdobje opazovanja**

Registrski podatki se zajemajo zadnji dan v mesecu, Anketa o delovni sili pa se izvaja četrtletno.

– **kategorije**

V registrskih podatkih so upoštevane le zaposlene osebe s pogodbami o zaposlitvi in samozaposlene osebe, po Anketi o delovni sili pa štejemo med delovno aktivno prebivalstvo tudi pomagajoče družinske člane in osebe, ki delajo po pogodbah o delu, avtorskih pogodbah ali za neposredno plačilo, skratka osebe, ki so v zadnjem tednu (od ponedeljka do nedelje) pred anketiranjem opravile kakršno koli delo za plačilo (denarno ali nedenarno), dobiček ali družinsko blaginjo.

#### METODOLOŠKE RAZLIKE MED REGISTRSKIMI IN ANKETNIMI PODATKI O BREZPOSELNIH OSEBAH

Registrski in anketni podatki se med seboj razlikujejo glede na:

– **vir**

Registrske podatke dobimo iz Registra brezposelnih oseb na Zavodu RS za zaposlovanje, anketne pa na podlagi Ankete o delovni sili. Pri registrskih podatkih gre za popolno zajetje, rezultati Ankete o delovni sili pa so ocene, ki temeljijo na statističnem vzorcu.

– **poročevalsko obdobje**

Registrske podatke zajemamo mesečno, in sicer po stanju na zadnji dan v mesecu, anketni podatki pa se nanašajo na aktivnost anketirane osebe v tednu pred anketiranjem (od ponedeljka do nedelje).

– **obdobje opazovanja**

Registrske podatke zajemamo mesečno, po stanju na zadnji dan v mesecu, Anketa o delovni sili pa se izvaja četrtletno.

– **definicija brezposelne osebe**

Registrirana brezposelna oseba je oseba, ki je prijavljena na Zavodu za zaposlovanje in ki ustreza vsem merilom brezposelnosti, določenim na

months, already employed, pupils, students, apprentices or younger than 26 and participating in adult education. Registered unemployed persons are not self employed, owners or co-owners of enterprises, or owners, sharecroppers, renters or other users of agricultural or forest areas with cadastral income over a legally determined threshold value in the previous year.

**The registered unemployment rate** is the percent of registered unemployed persons in the labour force. The registered unemployment rate by municipalities and statistical regions is shown by residence of persons in employment and registered unemployed persons.

The **reference date** is the last day of the month. The annual average is one twelfth of the sum of data for the twelve months of the observed year.

#### METHODOLOGICAL DIFFERENCES BETWEEN REGISTER DATA AND DATA OBTAINED BY STATISTICAL SURVEYS OF PERSONS IN EMPLOYMENT

Register data and data obtained by statistical surveys differ regarding:

– **source**

Register data are based on the Statistical Register of Employment, while survey data are obtained by the Labour Force Survey. In register data we have full coverage while Labour Force Survey results are estimates based on a statistical sample.

– **reporting period**

Register data are extracted on the last day of the month, while survey data refer to the activity of the respondent in the week before the interview (from Monday to Sunday).

– **observation period**

Register data are extracted on the last day of the month, while the Labour Force Survey is carried out quarterly.

– **categories included in persons in paid employment**

Register data cover only persons in paid employment with employment contracts and self employed persons, while the Labour Force Survey also covers unpaid family workers and persons working under contracts for work/service or for direct payment, i.e. persons who in the week (from Monday to Sunday) before the interview performed any work for payment (in money or in kind), profit or family gain.

#### METHODOLOGICAL DIFFERENCES BETWEEN REGISTER DATA AND DATA OBTAINED BY STATISTICAL SURVEYS OF UNEMPLOYED PERSONS

Register data and data obtained by statistical surveys differ regarding:

– **source**

Register data are obtained from the Register of Unemployed Persons, which is kept by the Employment Service of Slovenia, while survey data are obtained by the Labour Force Survey. In register data we have full coverage, while Labour Force Survey results are estimates based on a statistical sample.

– **reporting period**

Register data are extracted on the last day of the month, while survey data refer to the activity of the respondent in the week before the interview (from Monday to Sunday).

– **observation period**

Register data are extracted on the last day of the month, while the Labour Force Survey is carried out quarterly.

– **definitions of unemployed persons**

Registered unemployed persons are persons who are registered by the employment office and fulfil all criteria defined by the employment office.



Zavodu za zaposlovanje. Brezposelna oseba po Anketi o delovni sili je oseba, ki v zadnjem tednu (od ponedeljka do nedelje) pred anketiranjem ni niti eno uro delala za plačilo (denarno ali nedenarno), dobiček ali družinsko blaginjo, vendar v zadnjih štirih tednih aktivno išče delo in ga je v dveh tednih tudi pripravljena sprejeti. Med brezposelne osebe spadajo tudi tiste, ki so že našle delo in ga bodo začele opravljati po anketiranju.

## OBJAVLJANJE REZULTATOV

Mesečno:

- Aktivno prebivalstvo. *Prva objava.*
- Aktivno prebivalstvo. *Podatkovni portal SI-STAT* – <http://www.stat.si>
- *Pomembnejši statistični podatki o Sloveniji.*

Letno:

- *Statistični letopis Republike Slovenije.*
- *Slovenija v številkah.*
- Aktivno prebivalstvo, Slovenija. *Statistične informacije.*

According to the Labour Force Survey, unemployed persons are persons who in the week (from Monday to Sunday) before the interview did not perform any work for payment (in money or in kind), profit or family gain but have been actively seeking work in the last four weeks before the interview and are prepared to accept it in two weeks. Unemployed persons are also those who found work and will start working shortly after the interview.

## DATA PUBLISHING

Monthly:

- Labour Force. *First Release.*
- Labour Force. *SI-STAT data portal* – <http://www.stat.si/eng>
- *Some Important Statistics on Slovenia.*

Annually:

- *Statistical Yearbook of the Republic of Slovenia.*
- *Slovenija in Figures.*
- Labour Force, Slovenia. *Rapid Reports.*

Avtor: Samo Grošelj

Publikacija je na voljo na spletnem naslovu  
[www.stat.si/publikacije/pub\\_startinf1.asp?podroclje=7](http://www.stat.si/publikacije/pub_startinf1.asp?podroclje=7)

Datum objave na spletu: 27. 8. 2012

Informacije daje Informacijsko središče:

tel. (01) 241 64 04

elektronska pošta [info.stat@gov.si](mailto:info.stat@gov.si)

Author: Samo Grošelj

The publication is available at:

[www.stat.si/doc/statinf/07-SI-009-1201.pdf](http://www.stat.si/doc/statinf/07-SI-009-1201.pdf)

Web release date: 27. 8. 2012

Information: Information Centre

phone: + 386 1 241 64 04

e-mail: [info.stat@gov.si](mailto:info.stat@gov.si)