

ONKOLOŠKI INŠTITUT V LJUBLJANI
INSTITUTE OF ONCOLOGY, LJUBLJANA

REGISTER RAKA ZA SLOVENIJO
CANCER REGISTRY OF SLOVENIA

INCIDENCA RAKA V SLOVENIJI
CANCER INCIDENCE IN SLOVENIA
1995

POROČILO RR Št. 37
REPORT No. 37

LJUBLJANA 1998

ISSN 1318-2471

Uredniški odbor

Editorial Board

Vera Pompe Kirn, glavna urednica - Editor-in-chief

Rastko Golouh

Jurij Lindtner

Maja Primic Žakelj

Božena Ravnihar

Zvonimir Rudolf

Branko Zakotnik

Osebjje Registra raka

Staff of the Cancer Registry

Vera Pompe Kirn, vodja - Head

Neva Volk, mlada raziskovalka - Junior researcher

Jurij Modic, računalniška obdelava - EDP analysis

Vanja Černilec, slike - figures

Mojca Brus

Marjeta Bukovec

Neža Milčič

Nataša Robek

Fani Škrlec

Tone Žakelj, oblikovanje tabel in priprava za tisk - desk-top publishing

Izdal Onkološki inštitut, Ljubljana

Published by Institute of Oncology, Ljubljana, Slovenia

Direktor

Director

Zvonimir Rudolf

Naslov

Correspondence to

Prof. Vera Pompe Kirn, M.D., D.Sc.

Institute of Oncology

Zaloška c. 2, 1001 Ljubljana, p.p. 2217, Slovenia

tel. +386 (0)61 13-24-113

Tisk

Printed by

Grafis

VSEBINSKO KAZALO

CONTENTS

	Stran Page
Uvod in pojasnila	5
Introduction and Comments	9
 Slike	
Figures	
1. Najpogostejše lokacije raka po spolu - Slovenija 1995 The leading cancer sites by sex - Slovenia 1995	11
2. Groba in kumulativna letna incidenca raka vseh lokacij po spolu - Slovenija 1950-95 Crude and cumulative annual cancer incidence; all sites by sex - Slovenia 1950-95	12
3. Groba letna incidenca izbranih rakov po spolu - Slovenija 1950-95 Crude annual cancer incidence by selected primary sites and sex - Slovenia 1950-95	13
4. Lokacije malignega melanoma pri novih bolnikih, Slovenija 1991-95 New patients with malignant melanoma by site of the disease, Slovenia 1991-95	14
5. Opazovano in napovedano število novih bolnikov s kožnim malignim melanomom, Slovenija 1990-2009 Observed and predicted number of new patients with cutaneous malignant melanoma, Slovenia 1990-2009	15
6. Starostno specifična incidenca kožnega malignega melanoma po spolu, Slovenija 1991-95 Age-specific incidence of cutaneous malignant melanoma by sex, Slovenia 1991-95	15
7. Lokacije kožnega malignega melanoma pri novih bolnikih, Slovenija 1991-95 New patients with cutaneous malignant melanoma by site of the disease, Slovenia 1991-95	16
8. Globina invazije kožnega malignega melanoma po spolu, Slovenija 1991-1995 New patients with cutaneous malignant melanoma by depth of invasion and sex, Slovenia 1991-95	17
9. Relativno preživetje bolnikov z malignim melanomom po spolu, Slovenija 1973-92 Relative survival of patients with malignant melanoma by sex, Slovenia 1973-92	18
 Tabele	
Tables	
1. Prebivalstvo Slovenije po starosti in spolu na dan 30. junija 1995 Population of Slovenia by age and sex on June 30th, 1995	19
2. Prebivalstvo Slovenije po zdravstvenih regijah po spolu na dan 30. junija 1995 Population of Slovenia by health regions by sex on June 30th, 1995	20

3.	Število novih primerov raka ter število in odstotek primerov, registriranih samo iz zdravniških poročil o vzroku smrti, po lokaciji in spolu - Slovenija 1995 Total number of new cancer cases, number and percentage of cases registered from death certificates only, by site and sex - Slovenia 1995	21
4a.	Število novih primerov raka po lokaciji (MKB-8), spolu in starosti - Slovenija 1995 Number of new cancer cases by primary site (ICD-8), sex, and age - Slovenia 1995	25
4b.	Število novih primerov raka po lokaciji (MKB-10), spolu in starosti - Slovenija 1995 Number of new cancer cases by primary site (ICD-10), sex, and age - Slovenia 1995	29
5.	Incidenca raka na 100 000 prebivalcev po spolu in starosti ter kumulativna stopnja po lokaciji - Slovenija 1995 Cancer incidence per 100 000 population by sex and age, and cumulative rate by site - Slovenia 1995 ..	35
6.	Število novih primerov raka po zdravstvenih regijah, po najpogostejših lokacijah in spolu - Slovenija 1995 Number of new cancer cases by health regions, by most frequent sites and sex - Slovenia 1995	41
7.	Število novih primerov raka, ugotovljenih v bolnišnicah, ter število in odstotek mikroskopsko potrjenih primerov, po lokaciji in spolu - Slovenija 1995 Total number of new cancer cases diagnosed in hospitals and number and percentage of microscopically confirmed cases - by site and sex - Slovenia 1995	42
8.	Število histološko (in citološko) potrjenih novih primerov raka - po histološki vrsti in lokaciji - Slovenija 1995 Number of histologically (and cytologically) confirmed new cancer cases by histologic type and site - Slovenia 1995	46
9.	Število primerov ne-Hodgkinovih limfomov po lokaciji, spolu in starosti - Slovenija 1995 Total number of non-Hodgkin's malignant lymphomas by site, sex, and age - Slovenia 1995	52
10.	Število novih primerov raka po bolnišnicah ugotovitve diagnoze ter število in odstotek primerov, napotenih na Onkološki inštitut - Slovenija 1995 Number of new cancer cases diagnosed by reporting hospitals, and number and percentage of cases referred to the Institute of Oncology, Ljubljana - Slovenia 1995	53
11.	Število in odstotek novih primerov raka, ugotovljenih v bolnišnicah, po stadiju, lokaciji in spolu - Slovenija 1995 Number and percentage of new cancer cases reported by hospitals by stage, site and sex - Slovenia 1995	55
12.	Število umrlih za rakom in drugimi neoplazmami po lokaciji, spolu in starosti - Slovenija 1995 Number of cancer and other neoplasms deaths by site, sex and age - Slovenia 1995	59
13.	Število vseh živih bolnikov z rakom po spolu in izbrani primarni lokaciji - Slovenija, 31. 12. 1995 Prevalence of cancer patients by sex and selected primary site - Slovenia, Dec. 31, 1995	63

UVOD

Register raka za Republiko Slovenijo (Register) je bil ustanovljen pri Onkološkem inštitutu v Ljubljani leta 1950 na pobudo in pod vodstvom profesorice dr. Božene Ravnihar kot posebna služba za zbiranje in obdelavo podatkov o incidenci raka in o preživetju bolnikov z rakom. Prijavljanje raka je od takrat dalje v Republiki Sloveniji obvezno, z zakonom predpisano (*Ur. l. SRS*, št. 10/50, št. 29/50, št. 14/65, št. 1/80, št. 45/82, št. 42/85 in *Ur. l. RS*, št 9/92). Podrobneje ga zaenkrat še vedno določa Pravilnik o prijavi in kontroli rakavih bolnikov in o drugih tehničnih vprašanjih boja proti raku (*Ur. l. SRS*, št. 4/66).

Incidenca raka je po svetu zelo različna. Tudi **Republika Slovenija kaže v zboleznosti za rakom svojo posebno sliko**. Zbrani podatki so številčna podlaga za ocenjevanje družbenega bremena rakavih bolezni v republiki, programiranje in ocenjevanje onkološkega varstva na področju primarne preventive, detekcije, diagnostike, zdravljenja, rehabilitacije, načrtovanje zmogljivosti in sredstev zdravstvenega varstva, ki so potrebna za obvladovanje rakavih bolezni (kadri, medicinska oprema, posteljne zmogljivosti), ter za klinične in epidemiološke raziskave v Sloveniji in v sklopu širših mednarodnih raziskav.

Populacijski register raka opravičuje svoj obstoj le, če se zbrani podatki tudi redno obdelujejo in objavljajo. Ena izmed stalnih oblik vračanja obdelanih informacij so prav letna poročila. Ker je virov informacij več, leta povsod po svetu izhajajo z najmanj dvoletnim zamikom.

Register je **prva letna poročila** izdajal že v letih 1953-57 za leta 1951-55. Prva analiza podatkov za leto 1950 je bila objavljena v *Zdravstvenem vestniku* leta 1951 (*Zdrav. Vestn.* 1951: 20, 264-277). Podatki za leta 1957-71 so bili objavljani v periodičnih publikacijah Svetovne zdravstvene organizacije *Epidemiological and Vital Statistics Report* Vol. 14, No. 11, 1961; Vol. 16, No. 12, 1963; Vol. 17, No. 12, 1964; Vol. 19, No. 12, 1966; Vol. 20, No. 12, 1967) in v *World Health Statistics Report* (Vol. 23, No. 3, 1970; Vol. 24, No. 2, 1971; Vol. 25, Nos. 4, 5, 1972; Vol. 26, No. 8, 1973; Vol. 27, Nos. 6, 7, 1974). Podatki od leta 1965 dalje so bili spet redno objavljani v posebnih letnih poročilih z naslovom *Rak v Sloveniji* (1965-77) oziroma ***Incidenca raka v Sloveniji*** (1978-94) v slovenskem in angleškem jeziku. Glede na želje in pripombe uporabnikov poizkušamo ta letna poročila iz leta v leto dopolnjevati. Pri tem nam pomaga uredniški odbor, v katerem so zbrani specialisti različnih vej onkologije (kliniki, epidemiologi in patolog).

Naš Register je **ena prvih tovrstnih služb v Evropi**. Pred letom 1950 so bili populacijski registri raka ustanovljeni le v Hamburgu, na Danskem, v Veliki Britaniji, v Belgiji in v tedanji ZSSR. Prav zato so in so bili naši podatki o incidenci raka zanimivi tudi za širši svet. Leta 1957 je izšlo prvo obsežnejše poročilo za leta 1950-55 v angleščini *Cancer in Slovenia 1955* (B. Ravnihar, A. Valentin, T. Božič, J. Doič, D. Pečirer). **Podatke** za leta 1956-60, 1961-65, 1968-72, 1973-76, 1978-81, 1982-87 in 1988-92 so objavili tudi v vseh sedmih zvezkih knjige ***Cancer Incidence in Five Continents***, UICC, Ženeva (Vol. 1-1966, eds. Doll R., Payne P., Waterhouse J.; Vol. 2-1970, eds. Doll R., Muir C., Waterhouse J.), in IARC, Lyon (Vol. 3-1976, eds. Waterhouse J., Muir C., Correa C., Powell J.; Vol. 4-1982, eds. Waterhouse J., Muir C., Shanmugaratnam K., Powell J.; Vol. 5-1987, eds. Muir C., Waterhouse J., Mack T., Powell J., Whelan S.; Vol. 6-1992, eds. Parkin DM., Muir C., Whelan S., Gao Y., Ferlay J., Powell J.; Vol. 7-1997, eds. Parkin DM., Whelan S., Ferlay J., Raymond L., Young J.). Podatki o incidenci in umrljivosti za rakom za leta 1983-94 so vključeni tudi v podatkovno bazo *Mreže evropskih registrov raka EUROCIM*, ki jo vzdržujeta Evropska komisija programa *Evropa proti raku* in *Mednarodna agencija za raziskovanje raka*.

V letu 1993 smo prešli na sodobnejšo, s programom *Oracle* podprto računalniško obdelavo podatkov na lastnem računalniku *Unix, SiliconGraphics IRIS4D/310S*. Zbrane podatke tako lažje obdelujemo še podrobneje v skladu s trenutno perečo problematiko v Sloveniji, našim raziskovalnim programom in željami naših uporabnikov. Ti podatki so objavljeni v domačem in tujem strokovnem tisku ter po potrebi tudi v dnevnikih časopisih. V letu 1991 je izredno veliko število uporabnikov zanimalo pojavljanje raka na območju posameznih občin. Ker je za tovrstno analizo v enem letu v Sloveniji premalo primerov, smo leta 1992 izdali še posebno publikacijo za desetletno obdobje, ***Zemljevidi incidence raka v Sloveniji, 1978-1987***. Leta 1995 je izšla s slovensko-angleškim besedilom knjiga ***Preživetje bolnikov z rakom v Sloveniji 1963-1990***. Barvne slike in tabele s podatki o pričakovanem, opazovanem in relativnem preživetju bolnikov z rakom v šestih časovnih obdobjih spremljajo komentarji klinikov-onkologov. V pripravi pa je gradivo za objavo izsledkov študije ***Napoved incidence raka v Sloveniji do leta 2000 in 2010***.

GRADIVO IN POJASNILA

Podatke dobivamo iz posebnih Prijavnic rakave bolezni iz vseh bolnišnic in diagnostičnih centrov v Sloveniji. Dopolnjujemo jih še z zdravniškimi poročili o vzroku smrti in s podatki iz obdukcijских zapisnikov, v katerih je navedena diagnoza rak, ter s prijavicami iz zdravstvenih domov. **Zbiranje podatkov smo zaključili 24. decembra 1997.** Njihovo zanesljivost osvetljujeva dva kazalca: odstotek primerov raka, registriranih samo iz zdravniških poročil o vzroku smrti (tabela 3), in odstotek mikroskopsko (histološko ali citološko) potrjenih primerov (tabela 7).

Incidenca pomeni število vseh v enem koledarskem letu na novo ugotovljenih primerov raka. V incidenco ne štejemo novih primarnih rakov parnega organa iste lokacije, če je bila histološka vrsta obeh rakov, npr. leve in desne dojke, enaka. Prav tako v incidenco ne štejemo novega pojava raka iste histološke vrste na istem organu, npr. multiple lezije v debelem črevesu. Tabele prikazujejo podatke o prebivalcih in incidenci raka v Sloveniji v letu 1995 po spolu, starosti, lokaciji, histološki vrsti in stadiju bolezni ob diagnozi ter o incidenci po zdravstvenih regijah in območjih zdravstvenih domov, kot tudi podatke o številu novih primerov raka, ugotovljenih v tem letu po posameznih bolnišnicah. V tabele so vključeni le podatki o bolnikih, ki imajo stalno bivališče na območju Republike Slovenije, ne glede na to, kje so bili zdravljeni.

Slike 1-3 prikazujejo tiste podatke, ki naše uporabnike največkrat zanimajo: to je najpogostnejše lokacije raka po spolu ter trendi incidence vseh in izbranih rakov po spolu.

Slike 4-9 opozarjajo na rastočo problematiko kožnega malignega melanoma v Sloveniji. Pri nas je incidenca pričela strmeje naraščati šele v drugi polovici osemdesetih let. Zaradi strme rasti lahko pričakujemo v tem petletnem obdobju povprečno letno že 200 novih primerov, v naslednjem petletnem obdobju pa 250 novih primerov. Deleži napredovale bolezni (Clark IV-V) so bili v letih 1991-95 v Sloveniji v primerjavi z drugimi evropskimi državami veliki, velik je bil tudi delež primerov z nedoločeno globino invazije po Clarku. V velikem deležu napredovale bolezni tiči razlog, da je pri nas v primerjavi z drugimi evropskimi državami relativno petletno preživetje slabše. V obdobju 1988-92 je bilo 49-odstotno pri moških in 67-odstotno pri ženskah. Glede na obdobje 1973-77 pa se je vendarle povečalo za 10 %.

V letu 1993 smo uvedli obvezno prijavljanje vseh sprememb materničnega vratu označenih kot CIN III. V tabelah 3-7 tako letos že tretjič navajamo število vseh primerov, prijavljenih kot CIN III. Mednje so šteti tudi ti, ki so bili označeni kot intraepitelijski in so bili v preteklih letih navedeni v teh tabelah pod šifro 2340. Število vseh primerov CIN III je dvakrat večje od števila primerov, prijavljenih kot intraepitelijski karcinom. Primerjava s podatki za obdobje 1961-92 tako ni možna. Letos smo na željo klinikov dodali še število vseh prijavljenih intraepitelijskih karcinomov mehurja in vseh malignih melanomov Clark I.

Zanesljivost podatkov za leto 1995, 3 % primerov, registriranih samo s pomočjo zdravniških poročil o vzroku smrti (**tabela 3**), je realen delež rakavih bolnikov, ki v Sloveniji zaradi starosti in/ali napredovale bolezni ni bil preiskovan in zdravljen v bolnišnici.

Lokacije raka smo v **tabeli 4** šifrirali po 8. (tabela 4a) in po 10. (tabela 4b) reviziji *Mednarodne klasifikacije bolezni* (MKB), da bi bralca opozorili na razlike med obema revizijama. Zaradi razlik tudi vsoti tabel 4a in 4b nista enaki. Po 10. reviziji MKB namreč policitemija rubra vera in mielofibroza nista uvrščeni med rakave bolezni. Število zbolelih otrok je mejah pričakovanega.

V vseh ostalih tabelah so lokacije raka šifrirane po 8. reviziji, da je primerjava s poročili od vključno 1970. leta dalje še možna.

Tabela 5 prikazuje grobo in starostno specifično incidenčno stopnjo na 100.000 prebivalcev ter kumulativno stopnjo na 100. Število vseh novih primerov raka iz leta 1995 je preračunano na število prebivalcev R Slovenije na dan 30. junija tega leta (**tabela 1**). Groba incidenčna stopnja je število novih primerov na 100.000 oseb, starostno specifična stopnja pove to relativno število v posamezni petletni starostni skupini. Kumulativna stopnja do 74. leta pa pove, kolikšna je verjetnost pri novorojenčku, da bo zbolel do vključno 74. leta starosti. Pomembna je pri primerjanju populacij z različno starostno strukturo. Day jo opredeljuje kot direktno, na dejansko populacijo posamezne petletne starostne skupine standardizirano incidenco (*Cancer Incidence in Five Continents*, Vol. 5, 1987: 787-789). Izračunamo jo kot petkratno vsoto starostno specifičnih incidenc na 100 prebivalcev posameznih petletnih starostnih skupin. Kumulativna incidenca 5,6/100 za raka dojk pri ženskah pomeni npr., da bo 5,6 % novorojenk do 75. leta starosti verjetno zbolelo za rakom dojk. Razred velikosti kumulativnih incidenčnih stopenj na 100 prebivalcev je drugačen kot pri grobih incidenčnih stopnjah na 100.000 prebivalcev. Primerjava oblike krivulj na **sliki 2** pa nam kaže, da lahko staranju našega prebivalstva pripišemo naraščanje raka predvsem pri ženskah, medtem ko pri moških očitno k temu prispevajo še drugi dejavniki tveganja.

Na različno starostno strukturo območij zdravstvenih regij moramo pomisliti tudi pri uporabi in razlagi podatkov **tabele 6**. Njen namen je prikazati število novozbolelih za operativne namene načrtovanja zmogljivosti in sredstev zdravstvenega varstva na območjih zdravstvenih regij. Tako v tej tabeli prikazujemo tudi podatke o številu novih primerov CIN III. Za druge namene, predvsem za iskanje vzrokov takšnega ali drugačnega pojavljanja raka, je treba podatke najprej starostno standardizirati. Kako vpliva različna starostna struktura na incidenčne stopnje, je razvidno iz že omenjene knjige *Zemljevidi incidence raka v Sloveniji*, ki prikazuje tako grobe kot kumulativne incidenčne stopnje za vse in najpogostejše rake po območjih bivših občin.

Število vseh mikroskopsko, to je histološko ali citološko potrjenih novih primerov raka je navedeno v **tabelah 7 in 8**. V tabeli 8 so ločeno navedeni primeri, ki so histološko potrjeni, in tisti, ki so potrjeni samo citološko (ti primeri so navedeni v oklepaju). Vsota vseh je enaka številu vseh mikroskopsko potrjenih primerov, navedenemu v tabeli 7. Histološke vrste v tabeli 8 so šifrirane po 2. reviziji šifranta ICD-O (WHO, 1991). Združili smo jih v smiselne skupine za namene tega poročila. To pa ne izključuje individualne obdelave po katerikoli šifri navedenega šifranta ICD-O, npr. izpisa redkih histoloških vrst, kot so Burkittovi limfomi. Iz te tabele lahko razberemo tudi primarne lokacije ekстранodalnih malignih limfomov in njihovo število. Ekстранodalni maligni limfomi so namreč po 8. reviziji MKB dosledno uvrščeni med ustrezne šifre primarne lokacije raka.

Starostno porazdelitev ekстранodalnih in nodalnih lokacij ne-Hodgkinovih malignih limfomov kaže **tabela 9**. Zaradi majhnega števila prikazujemo le absolutna števila.

Klinike in bolnišnice prve prijave rakave bolezni so navedene v **tabeli 10**.

Poenostavljeno opredelitev stadijev ob ugotovitvi bolezni prikazuje **tabela 11**. Opredelitev stadijev upošteva vse preiskovalne metode, vključno operacijo; če bolnik ni bil predhodno zdravljen, pa tudi obdukcijo. V uporabi je zato, ker so podatki o stadiju bolezni po klasifikaciji TNM pogosto pomanjkljivi. Maligni limfomi so opredeljeni po klasifikaciji *Ann-Arbor*. Podobno kot za histološke vrste je možen tudi izpis podatkov po klasifikaciji TNM, v kolikor so bili podatki ustrezno šifrirani na prijavnica h oziroma že v popisih bolezni.

Uradni podatki o umrljivosti za rakom so v **tabeli 12**. Tabela je pripravila dr. Jožica Šelb-Šemrl z Inštituta za varovanje zdravja RS. Podatki o prevalenci vseh in najpogostejših rakov so prikazani v **tabeli 13**. Dodali smo jo na željo številnih uporabnikov.

ZAHVALA

Zahvaljujemo se vsem zdravnikom, medicinskim sestram in administrativnemu osebju, ki so nam vestno in redno pošiljali podatke o novozbolelih rakavih bolnikih in njihovi nadaljnji usodi, ter Inštitutu za varovanje zdravja RS in Centralnemu Registru prebivalstva RS za dolgoletno sodelovanje. Prav posebej se zahvaljujemo sodelavkam Bolnišničnega registra Onkološkega inštituta v Ljubljani: Ani Dotzauer, Maruški Ferjančič in Nadi Jamšek, ki so z vodenjem evidence in s skrbnim izpisovanjem in šifriranjem podatkov iz popisov bolezni prispevale vsaj polovico v tem poročilu obdelanih podatkov, ter gospe Olgi Shresta za angleški prevod.

Uredniški odbor

Ljubljana, 24. 12. 1997

INTRODUCTION

The **Cancer Registry of Slovenia** (Registry) was founded in 1950 at the Institute of Oncology in Ljubljana, on the initiative and under the leadership of Prof. Božena Ravnihar, MD, as a special service for collecting and processing data on cancer incidence and cancer patients' survival. Since then notification of cancer has been compulsory in Slovenia (*Official Gazette of SRS*, No. 10/50, No. 29/50, No. 14/65, No. 1/80, No. 45/82, No. 42/85, and *Official Gazette of RS*, No. 9/92). Detailed definition on this is given in the Regulations on notification and follow-up of cancer patients and other technical aspects of anticancer activities (*Official Gazette of SRS*, No. 4/66).

Cancer incidence in the world varies greatly. **The Republic of Slovenia also shows its specific cancer incidence pattern.** The collected data serve as a basis for the assessment of cancer burden, for programming and evaluation of primary prevention, detection, diagnosis, treatments, rehabilitation, for planning facilities and funding needed for cancer control, hospital capacities and equipment, as well as for clinical and epidemiological research in Slovenia and in different multicentric international projects.

The existence of a population-based cancer registry is justified only by **regular processing and publication of the collected data.** The Registry's Annual Reports represent a permanent feed-back information. Because of a variety of data sources and contributors, almost all cancer registries practise at least a two year period delay before publishing.

The first analysis of data for 1950 was published in *Zdravstveni vestnik* in 1951, whereas the **first annual reports of the Registry for the period 1951-55** were issued during the years 1953-57. The data for the period 1957-71 appeared in periodicals edited by World Health Organization - *Epidemiological and Vital Statistics Report*, Vol. 14, No. 11, 1961; Vol. 16, No. 12, 1963; Vol. 17, No. 12, 1964; Vol. 19, No. 12, 1966; Vol. 20, No. 12, 1967), as well as in *World Health Statistics Report* (Vol. 23, No. 3, 1970; Vol. 24, No. 2, 1971; Vol. 25, Nos. 4, 5, 1972; Vol. 26, No. 8, 1973; Vol. 27, Nos. 6, 7, 1974). The data from 1965 on have again appeared regularly in special annual reports, first entitled *Cancer in Slovenia (1965-77)*, and afterwards *Cancer Incidence in Slovenia (1978-94)*; the publication appears in Slovene and English. Our constant endeavours are directed into further improvement of these publications, taking into account the requests and comments of the users. In this, the support of our editorial board consisting of experts - oncologists of different specialities (i.e. clinicians, epidemiologists and a pathologist) proves to be very helpful.

Our Registry is **one of the oldest services of this type in Europe.** Before 1950, population-based cancer registries existed only in Hamburg (Germany), Denmark, Great Britain, Belgium and in the former Soviet Union. Therefore, our data on cancer incidence are interesting for a wide circle of professionals abroad. In 1957, the first comprehensive report in English for the period 1950-55 entitled *Cancer in Slovenia* was issued (B. Ravnihar, A. Valentin, T. Božič, J. Doič, D. Pečirer). **The data for periods 1956-60, 1961-65, 1968-72, 1973-76, 1978-81, 1982-87 and 1988-92 were reported in all seven volumes of the publication *Cancer Incidence in Five Continents*** issued by UICC, Geneva (Vol. 1, 1966, eds. Doll R., Payne P., Waterhouse J.; Vol. 2, 1970, eds. Doll R., Muir C., Waterhouse J.), and IARC, Lyon (Vol. 3, 1976, eds. Waterhouse J., Muir C., Correa C., Powell J.; Vol. 4, 1982, eds. Waterhouse J., Muir C., Shanmugaratnam K., Powell J.; Vol. 5, 1987, eds. Muir C., Waterhouse J., Mack T., Powell J., Whelan S.; Vol. 6, 1992, eds. Parkin D.M., Muir C., Whelan S., Gao Y., Ferlay J., Powell J.; Vol. 7-97, eds. Parkin D.M., Whelan S., Ferlay J., Raymond L., Young J.). The data on cancer incidence and mortality for the years 1983-94 are also **included in EUROCIM**, the data base of the *Network of European cancer registries*, maintained by the European Commission of *Europe Against Cancer* program, and *IARC (International Agency for Research on Cancer)*.

In 1993 we started to perform computer data analyses with the *Oracle* relational data base support on our own *Unix - Silicon Graphics IRIS4D/310S* server. This facilitates detailed analyses of the collected data, in accordance with the current problems in Slovenia, as well as with respect to our research program and individual needs of our users. These data are published in the national and foreign medical literature and in the daily print, when necessary. In 1992, a special publication covering a ten-year period, **Atlas of Cancer Incidence in Slovenia, 1978-1987** was published. In 1995, a book entitled ***Cancer patients survival in Slovenia, 1963-1990*** with Slovene-English text was published. The color pictures and tables presenting the data on expected, observed and

relative survival of cancer patients in 6 time periods are explained by clinicians-oncologists' comments. The results of the study **Prediction of Cancer Incidence in Slovenia till 2000 and 2010** are being prepared for publication.

MATERIAL AND COMMENTS

The main sources of data are notifications gathered from all hospitals and diagnostic centers in Slovenia. This information is completed by death certificates and autopsy protocols stating cancer diagnosis, and by notifications from regional health centres. **Data collecting was completed on 24 December 1997.** The reliability of information can be assessed by two parameters: 1) the percentage of cancer cases registered solely on the basis of death certificates (Table 3), and 2) by the percentage of microscopically (histologically or cytologically) confirmed cases (Table 7).

Incidence represents the number of newly diagnosed cancer cases reported to the Registry in a given calendar year. New primary cancers of the same histology in paired organs were not comprised in the incidence figures, neither were any new cancers of the same histology appearing in the same organ, e.g. multiple lesions of the colon. In tables, data on population and on cancer incidence in Slovenia in 1995 by sex, age, site, histologic type, stage at diagnosis, as well as by health regions and health centre districts are presented along with data on the number of new cancer cases diagnosed in the same year in individual hospitals. Only the data on patients with permanent residence in Slovenia, regardless of the place of treatment, have been included.

Figures 1-3 present the data our readers are most frequently interested in: the most frequent cancer sites by sex, and the incidence trends for all and selected sites by sex.

Figures 4-9 call attention to the increasingly pressing problem of cutaneous malignant melanoma in Slovenia, where the incidence started to show an increasing trend only in the second half of the 80's. Based on that rapid growth, as many as 200 new cases can be expected in the present 5-year period, and 250 new cases in the following 5-year period. In comparison with other European countries, in Slovenia the rates of cases with advanced disease (Clark IV-V) in the period 1991-95 were high, and so were also the rates with an undefined depth of invasion by Clark. Our relatively worse five-year survival figures, as compared to other European countries, should be attributed to the high rates of cases with advanced disease. Thus in the period 1988-92 the relevant 5-year survival rates were 49% for males and 67% for females. Nevertheless, in comparison the the period 1973-77, the survival has increased by 10%.

In 1993, compulsory registration of all cervical intraepithelial displasias classified as CIN III was introduced. Thus, in the present report for the third time the number of all CIN III cases reported is given in Tables 3-7. CIN III include also the types classified as intraepithelial cancers, previously listed in these tables under the code 2340. The number of all CIN III cases is twofold that of the cases reported as intraepithelial carcinomas. Therefore, any comparison with the data for the period 1961-92 is not possible. On clinicians' request, the number of all reported intraepithelial carcinomas of the bladder and all malignant melanomas Clark I were added this year.

The reliability of the data for 1995 is reflected in 3% of cases registered only on the basis of death certificates (Table 3), which represent the actual rate of cancer patients in Slovenia who failed to be diagnosed or treated at hospital due to their old age and/or advanced disease.

In Table 4 cancer sites were coded according to the 8th (Table 4a) and the 10th (Table 4b) revision of the *International Classification of Disease (ICD)* in order to point out differences between the two revisions. Due to the differences also the totals in Tables 4a and 4b are not equal. Namely, according to the 10th revision of ICD, polycytemia rubra vera and myelofibrosis are not classified among cancer diseases. The number of childhood cancers has been within the limits of values expected.

In all other tables cancer sites were coded according to the 8th revision in order to render the comparison with reports from incl. 1970 on feasible.

Crude and age-specific incidence per 100 000 population is presented in Table 5 together with cumulative rate per 100. The number of all new cancer cases registered in 1995 has been calculated per Slovenian population census on 30 June, 1995 (Table 1). Crude incidence rate represents the number of new cases per 100.000 population, while age standardized rate expresses this relative number in an individual 5-year age group. Thus cumulative rate (0 to 74 years) expresses a newborn's risk of developing cancer by his completed 74th year of

age. It is important in comparing populations with different age structure. Day defines it as direct incidence, standardized to the actual population of an individual five-year group (*Cancer Incidence in Five Continents*, Vol. 5, 1987: 787-789). Cumulative incidence represents five times the sum of the age-specific incidence rates in 5-year age groups. Thus, the cumulative incidence of 5.6 / 100 for breast cancer in females means that e.g. 5.6 % of female newborns are expected to develop breast cancer till their 75th year of age. The cumulative incidence figures per 100 inhabitants differ from those of crude incidence per 100 000 population. The comparison of the curves on **Figure 2** indicates that the increasing cancer incidence rate in females can be attributed to the aging of population, whereas in males obviously additional risk factors should be considered as well.

When using and interpreting the data in **Table 6**, different age structure in regional health centre districts should be taken into account. It is intended to present the number of newly diagnosed cancers, as needed for planning of facilities and funding of health care in the regions and health centre districts. Therefore, in this table the data on all new CIN III cases by health centres are presented. When used for other purposes, particularly for the search of possible risk factors of different cancers, the data require previous age standardization. The influence of different age structures on the incidence rates is evident also from maps drawn in the mentioned *Atlas of Cancer Incidence in Slovenia, 1978-1987*, presenting crude as well as cumulative incidence rates for all and most frequent cancers by communes.

All microscopically, i.e. cytologically and histologically confirmed new cancer cases are presented in **Tables 7 and 8**. In **Table 8** histologically verified cases are presented separate from those confirmed cytologically (the latter are given in brackets). The total amounts to the number of all microscopically confirmed cases given in **Table 7**. Histological types in **Table 8** are coded according to the 2nd revision of ICD-O (WHO, 1991). For the purpose of this report, they have been joined to form sensible groups. This, however, does not exclude individual processing by any ICD-O code, e.g. outprint of rare histologic types such as Burkitt lymphomas. The table also provides information on primary sites of extranodal malignant lymphomas and their number, as the extranodal malignant lymphomas are strictly categorized among primary sites by corresponding codes in the 8th revision of ICD.

Age distribution of extranodal and nodal sites of non-Hodgkin malignant lymphomas is presented in **Table 9**. Owing to a small number of extranodal sites only the absolute numbers are given.

In **Table 10** university and general hospitals of first admission of cancer patients are cited.

A simplified definition of stages at diagnosis is presented in **Table 11**. Otherwise, solid tumor stage is classified according to *TNM Classification System*. In the simplified stage determination all investigation methods, incl. surgery, are considered. In the case that the patient has not been treated previously, autopsy report is considered as well. Malignant lymphomas are classified according to *Ann-Arbor System*. Similarly as for the histologic type, outprint of data by TNM classification is possible as well, provided that the data were coded correctly in patient records as well as on notification forms.

Official data on cancer mortality are given in **Table 12**. The table has been prepared by Dr. Jožica Šelb-Šemrl from the Institute of Public Health of the Republic of Slovenia. Data on prevalence of all and most frequent cancers are presented in **Table 13**. Both tables have been added on request of numerous users.

ACKNOWLEDGMENT

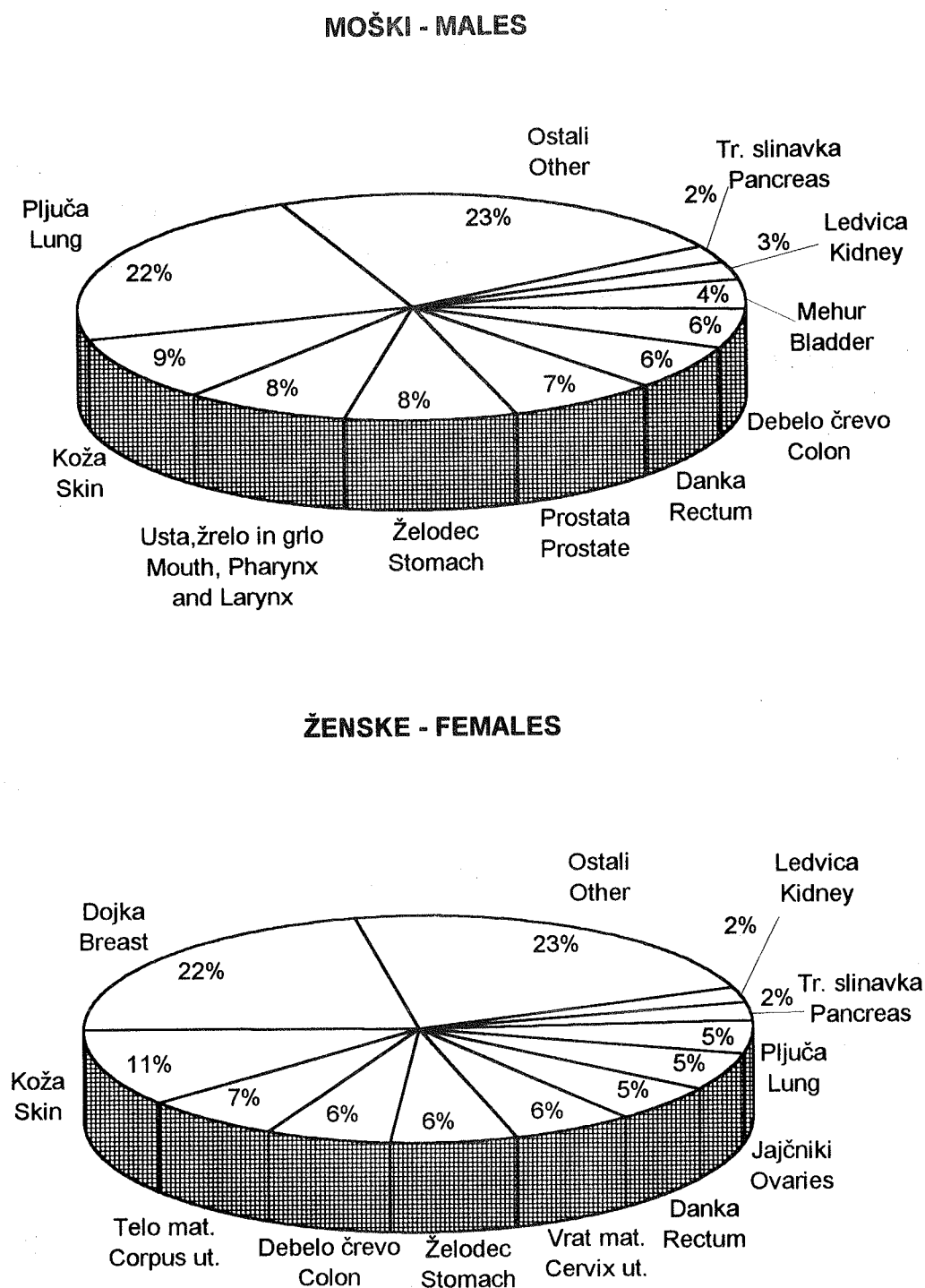
We thank the physicians, nurses and administrative staff who have provided the data on new cancer patients and their further history as well as the Institute of Public Health of the Republic of Slovenia and the Population Registry of the Republic of Slovenia for their longstanding collaboration. We owe special thanks to the co-workers at the Hospital Registry of the Institute of Oncology: Mrs. Ana Dotzauer, Maruška Ferjančič, and Nada Jamšek, whose accurate evidence keeping, registration and coding of data from patients records have contributed at least a half of the information presented in this report. We also thank Mrs. Olga Shrestha for translation and language proof-reading.

Editors

Ljubljana, December 24, 1997

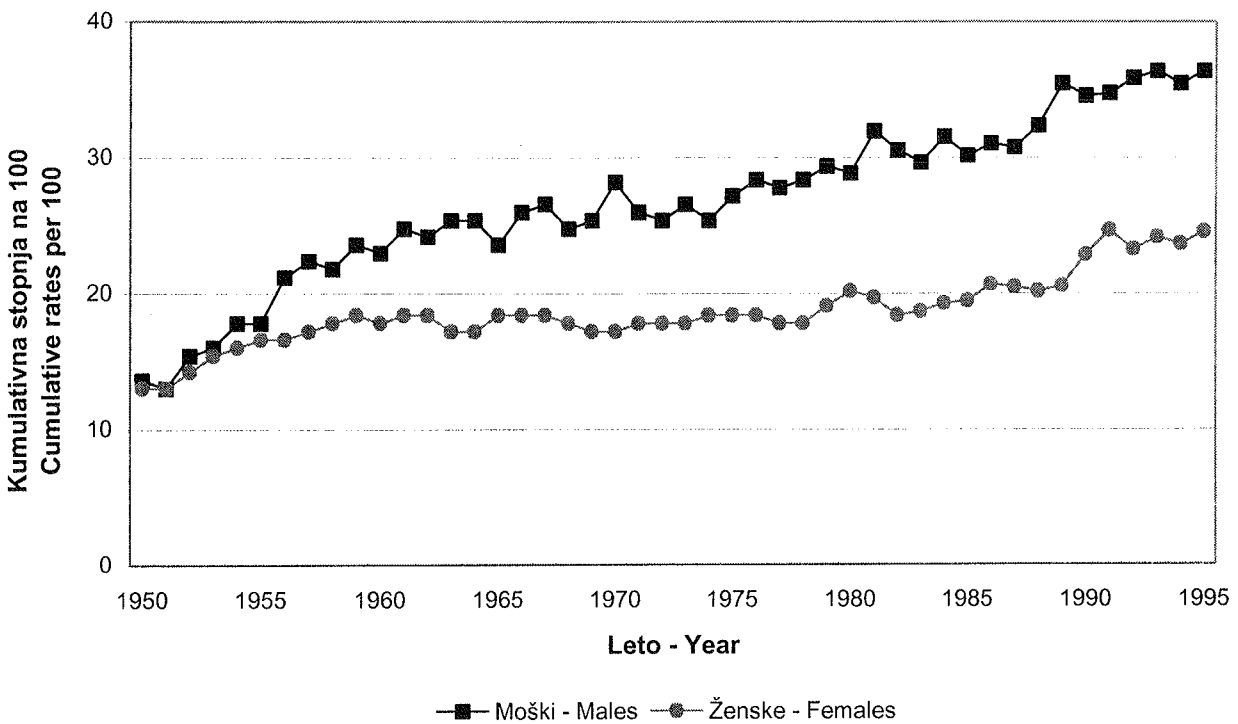
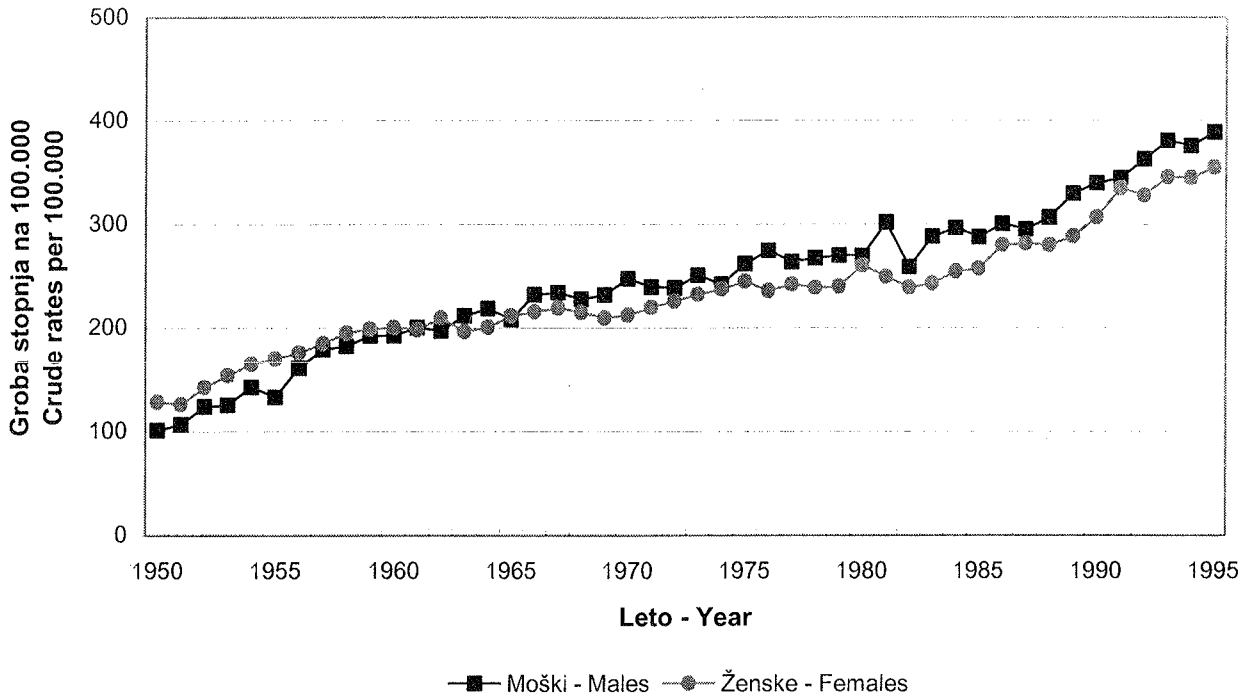
Slika 1. Najpogostejše lokacije raka po spolu - Slovenija 1995

Figure 1. The leading cancer sites by sex - Slovenia 1995



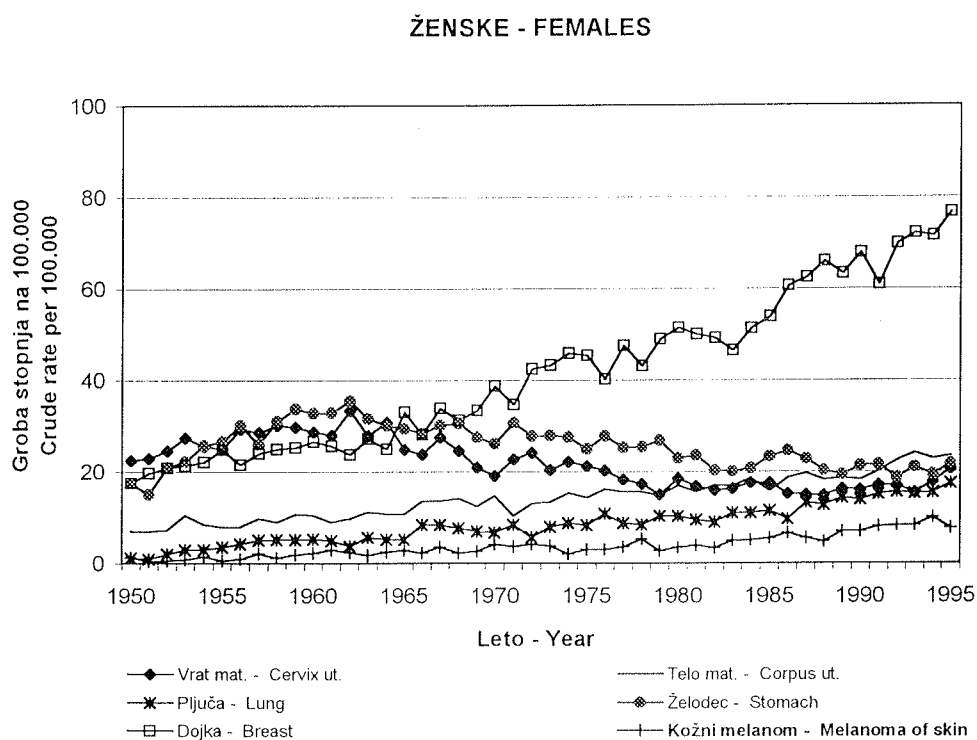
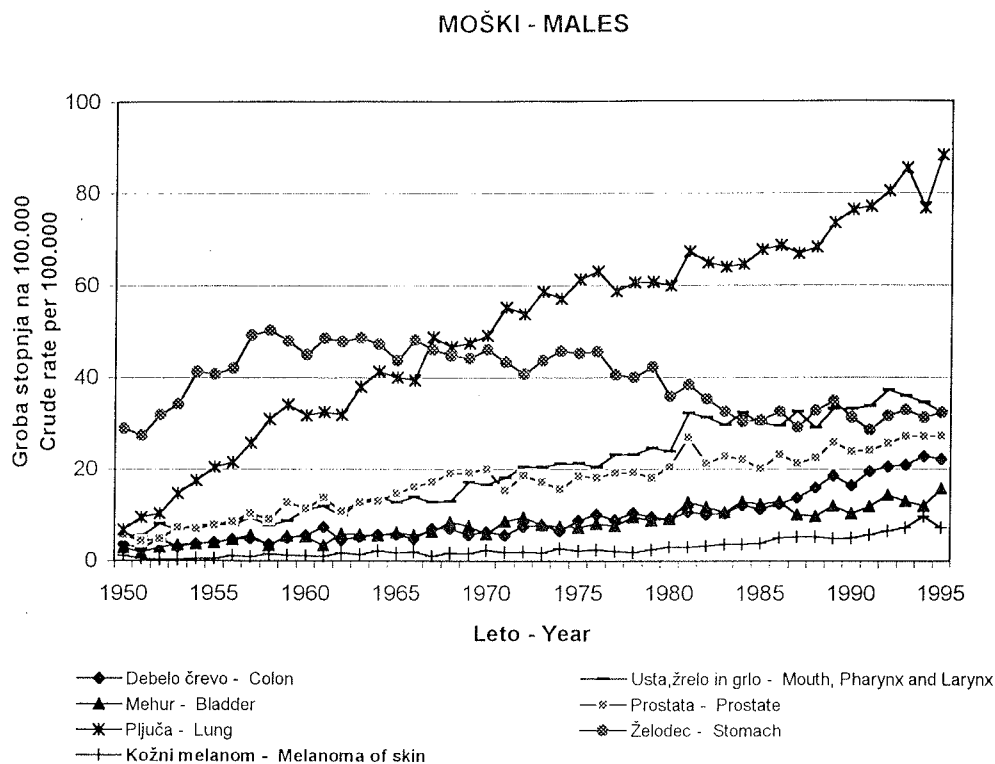
Slika 2. Groba in kumulativna letna incidenca raka vseh lokacij po spolu - Slovenija 1950-95

Figure 2. Crude and cumulative annual cancer incidence; all sites by sex - Slovenia 1950-95



Slika 3. Groba letna incidenca izbranih rakov po spolu - Slovenija 1950-95

Figure 3. Crude annual cancer incidence by selected primary sites and sex - Slovenia 1950-95



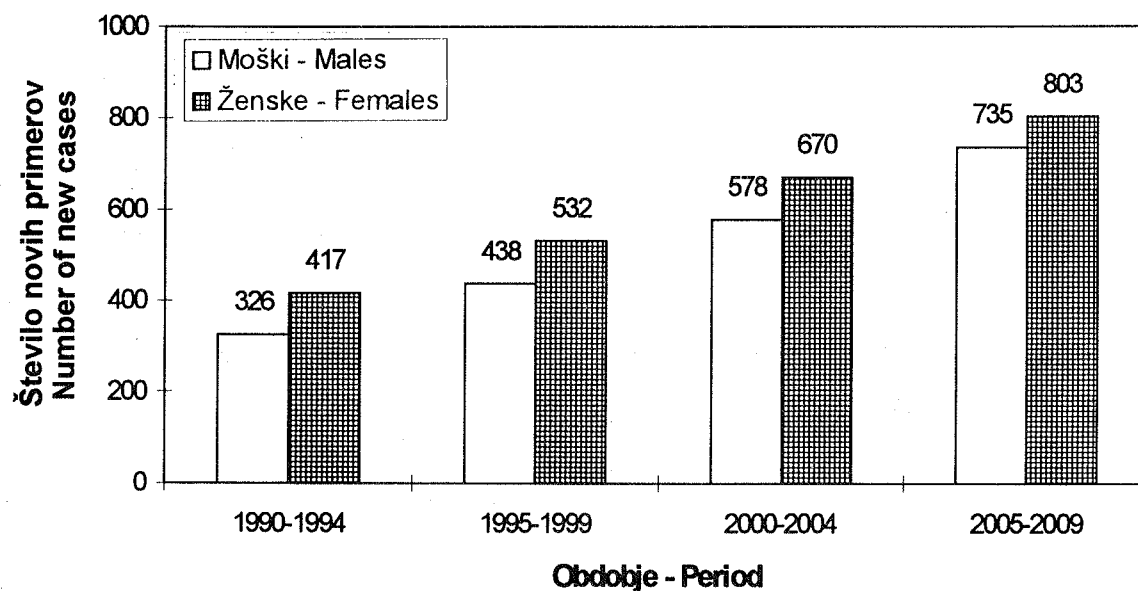
Slika 4. Lokacije malignega melanoma pri novih bolnikih - Slovenija 1991-95

Figure 4. Lokacije malignega melanoma pri novih bolnikih - Slovenija 1991-95

<i>Lokacija</i> <i>Site</i>	<i>Število primerov</i> <i>Number of cases</i>
Ustnica, ustna votlina Lip, oral cavity	6
Nos, obnosne votline Nose, sinuses	7
Koža dojke Breast skin	5
Želodec Stomach	1
Rektum Rectum	4
Koža Skin	773
Nožnica, vulva Vagina, vulva	11
Ledvica Kidney	2
Oko Eye	68
Primarna lokacija neznana Primary site unknown	16

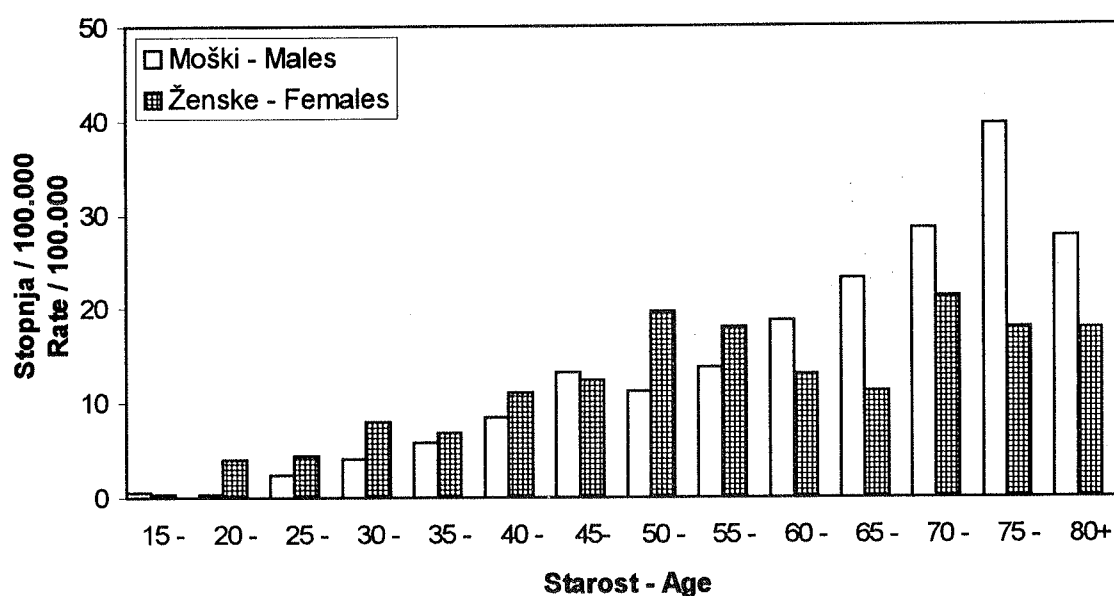
Slika 5. Opazovano in napovedano število novih bolnikov (starih 25 let in več) s kožnim malignim melanomom - Slovenija 1990-2009

Figure 5. Observed and predicted number of new patients (aged 25 and more) with cutaneous malignant melanoma - Slovenia 1990-2009



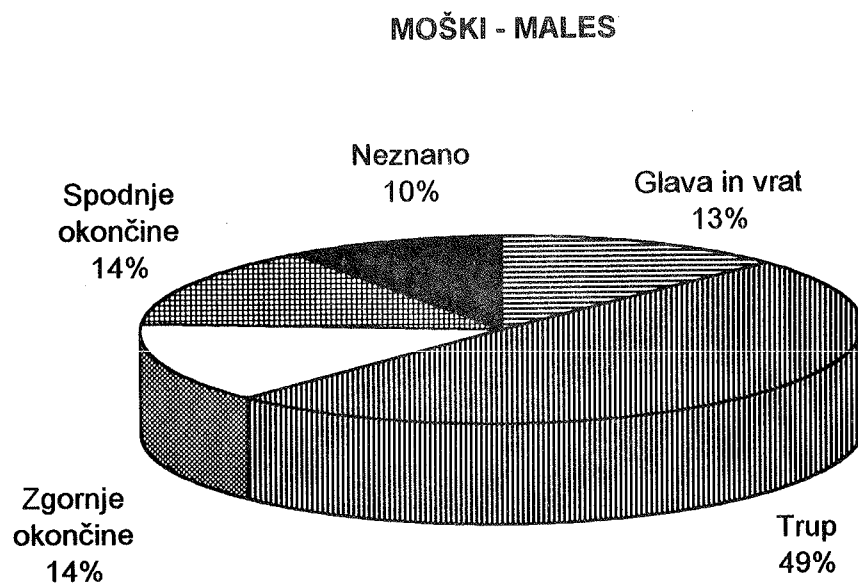
Slika 6. Starostno specifična incidenca kožnega malignega melanoma po spolu - Slovenija 1991-95

Figure 6. Age-specific incidence of cutaneous malignant melanoma by sex - Slovenia 1991-95

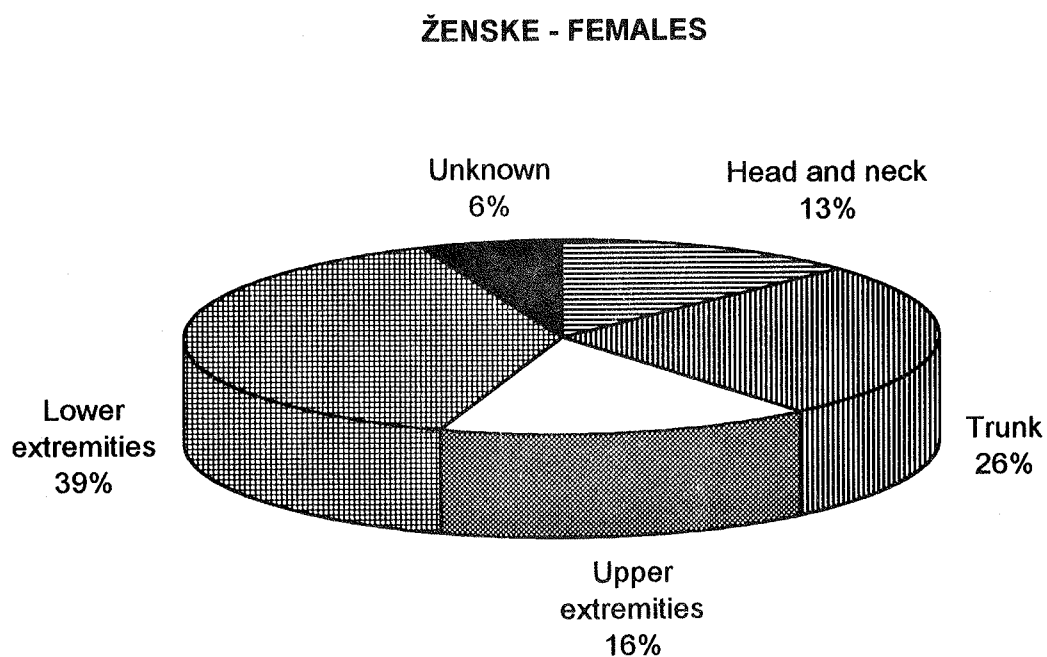


Slika 7. Lokacije kožnega malignega melanoma (Clark I izključen) pri novih bolnikih - Slovenija 1991-95

Figure 7. New patients with cutaneous malignant melanoma (Clark I excluded) by site of the disease - Slovenia 1991-95



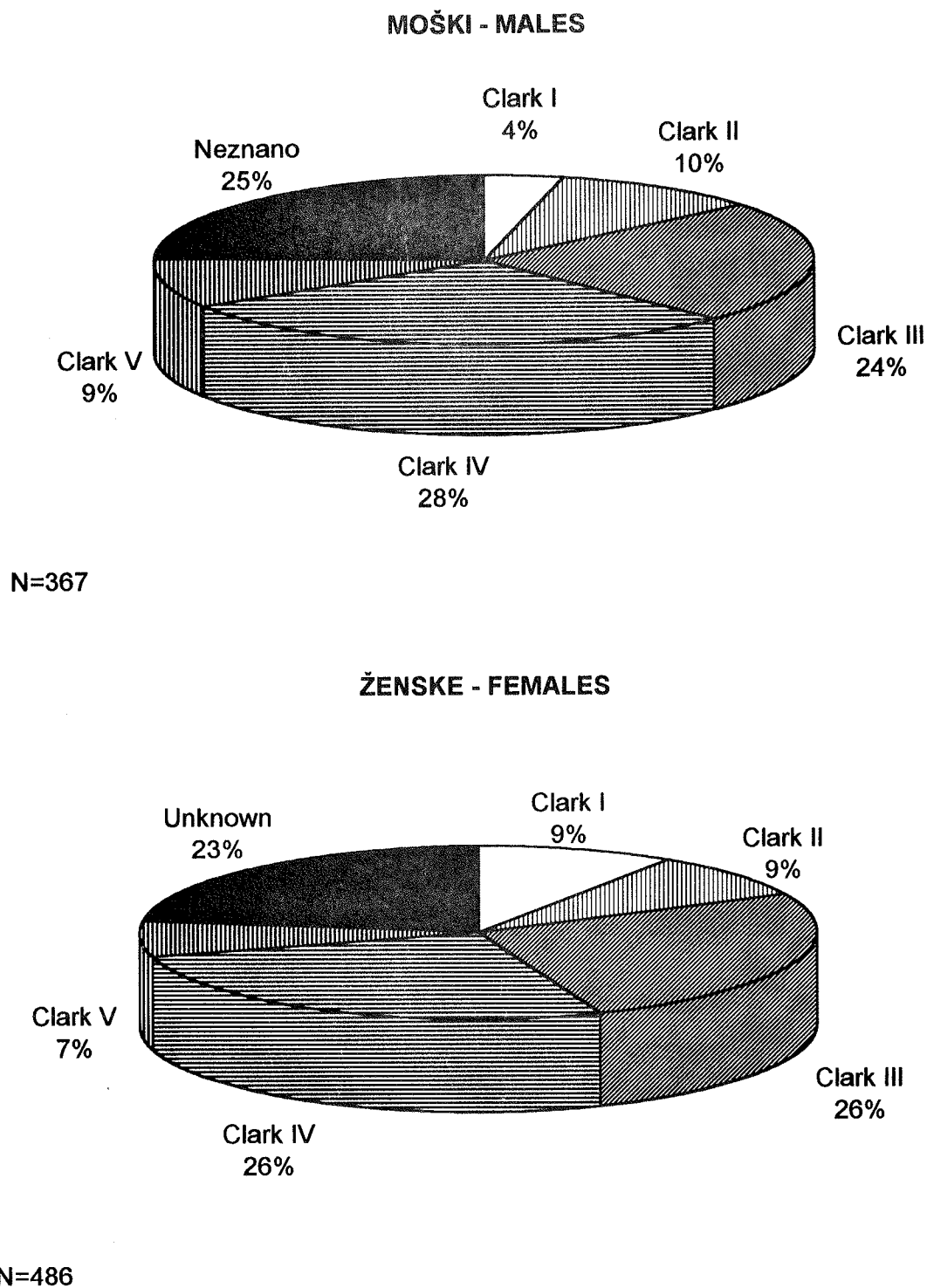
N=353



N=440

Slika 8. Globina invazije kožega malignega melanoma po spolu - Slovenija 1991-95

Figure 8. New patients with cutaneous malignant melanoma by depth of invasion and sex - Slovenia 1991-95



Slika 9. Relativno preživetje bolnikov z malignim melanomom po spolu - Slovenija 1973-92

Figure 9. Relative survival of patients with malignant melanoma by sex - Slovenia 1973-92

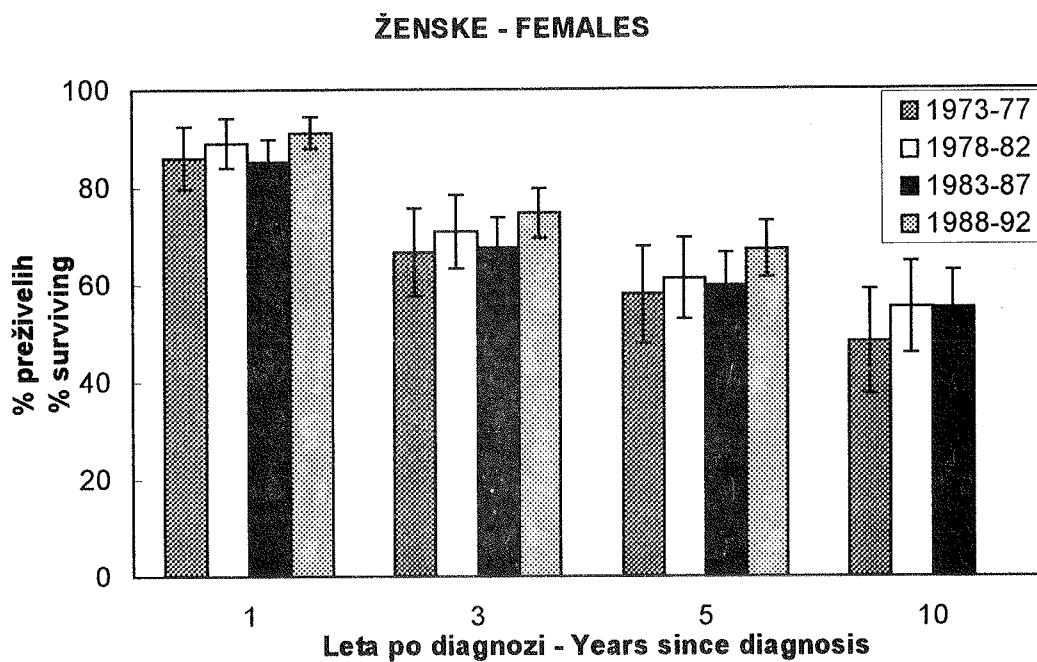
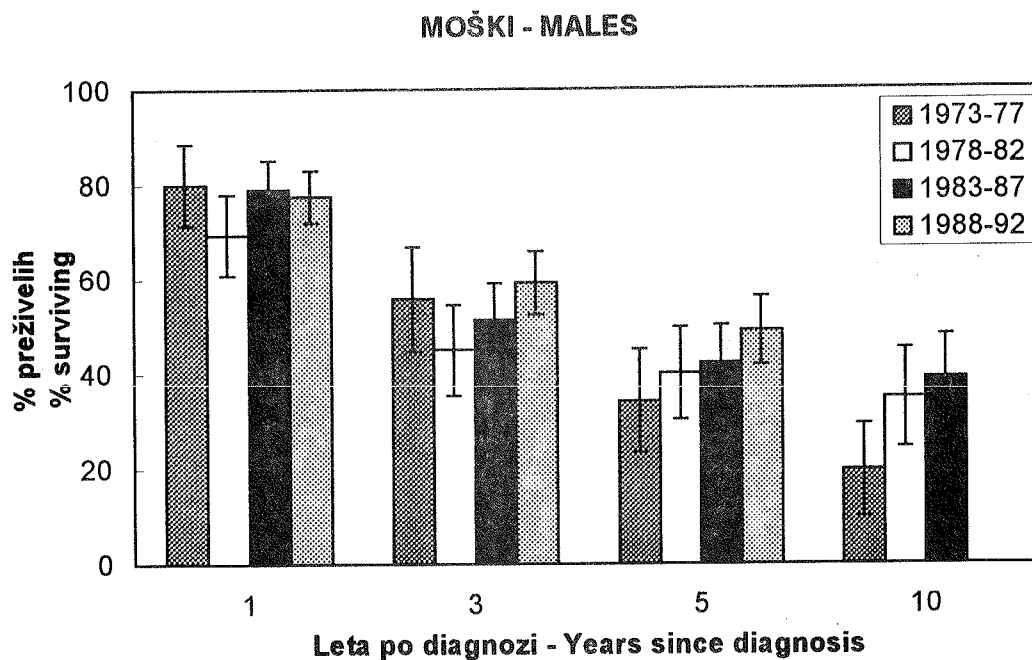


Tabela 1. Prebivalstvo Slovenije po starosti in spolu na dan 30. 6. 1995***Table 1. Population of Slovenia by age and sex on June 30th, 1995***

<i>Starost</i> <i>Age</i>	<i>Skupaj</i> <i>Total</i>	<i>Moški</i> <i>Males</i>	<i>Ženske</i> <i>Females</i>
0 - 4	100 830	51 666	49 164
5 - 9	121 727	62 447	59 280
10 - 14	139 083	71 102	67 981
15 - 19	151 010	77 659	73 351
20 - 24	142 886	72 779	70 107
25 - 29	146 370	72 996	73 374
30 - 34	152 502	75 908	76 594
35 - 39	156 089	78 821	77 268
40 - 44	161 942	82 905	79 037
45 - 49	133 187	67 643	65 544
50 - 54	116 038	57 934	58 104
55 - 59	110 923	54 146	56 777
60 - 64	107 206	48 725	58 481
65 - 69	91 590	37 340	54 250
70 - 74	69 048	23 584	45 464
75 - 79	31 325	10 319	21 006
80 in več 80 and over	51 884	15 158	36 726
Vse starosti Total	1 983 640	961 132	1 022 508

* Vir: Centralni register prebivalstva pri Statističnem uradu Republike Slovenije
Source: Population Registry at the Statistical Office of the Republic of Slovenia

Tabela 2. Prebivalstvo Slovenije po zdravstvenih regijah po spolu na dan 30. junija 1995*

Table 2. Population of Slovenia by health regions by sex on June 30th, 1995*

<i>Zdravstvena regija</i> <i>Health region</i>	<i>Skupaj</i> <i>Total</i>	<i>Moški</i> <i>Males</i>	<i>Ženske</i> <i>Females</i>
Celje	240 952	117 094	123 858
Gorica	102 600	49 990	52 610
Koper	135 497	66 207	69 290
Kranj	195 039	94 456	100 583
Ljubljana	587 300	280 708	306 592
Ljubljanske občine	321 888	151 304	170 584
Maribor	325 001	157 841	167 160
Mariborske občine	186 206	89 664	96 542
Murska Sobota	129 704	63 046	66 658
Novo mesto	133 525	65 485	68 040
Ravne	134 022	66 305	67 717
R Slovenija skupaj Total	1 983 640	961 132	1 022 508

* Vir: Centralni register prebivalstva pri Statističnem uradu Republike Slovenije
Source: Population Registry at the Statistical Office of the Republic of Slovenia

Tabela 3. Število novih primerov raka ter število in odstotek primerov, registriranih samo iz zdravniških poročil o vzroku smrti, po lokaciji in spolu - Slovenija 1995

Table 3. Total number of new cancer cases and number and percentage of cases registered from death certificates only, by site and sex - Slovenia 1995

<i>Šifra MKB*</i>	<i>Primarna lokacija</i>	<i>Spol</i>	<i>Število novih primerov</i>	<i>Registrirani samo iz zdravniških poročil o vzroku smrti</i>		
<i>ICD* No.</i>	<i>Primary site</i>	<i>Sex</i>	<i>Number of new cases</i>	<i>Število</i>	<i>Odstotek**</i>	
				<i>Registered from death certificates only</i>	<i>Number</i>	<i>Per cent**</i>
140	Vse lokacije	Skupaj	7 379	232	3	
-	All sites	Total				
209		Moški	3 740	109	3	
		Male				
		Ženske	3 639	123	3	
		Female				
140	Ustnica	M	27	-	-	
	Lip	Ž	4	-	-	
141	Jezik	M	33	1	3	
	Tongue	Ž	6	-	-	
142	Slinavke	M	8	-	-	
	Salivary glands	Ž	11	-	-	
143	Dlesni	M	4	-	-	
	Gum	Ž	2	-	-	
144	Ustno dno	M	27	-	-	
	Floor of mouth	Ž	1	-	-	
145	Usta, drugo	M	28	-	-	
	Mouth, other parts	Ž	6	-	-	
146	Orofarinks	M	88	-	-	
	Oropharynx	Ž	12	-	-	
147	Epifarinks	M	9	-	-	
	Epipharynx	Ž	3	-	-	
148	Hipofarinks	M	43	-	-	
	Hypopharynx	Ž	3	-	-	
149	Žrelo, neoznačeno	M	1	1		
	Pharynx, not specified	Ž	-	-		
150	Požiralnik	M	69	6	9	
	Esophagus	Ž	16	-	-	
151	Želodec	M	310	17	5	
	Stomach	Ž	222	21	9	
152	Tanko črevo	M	2	1		
	Small intestine	Ž	6	-		

cont. ↓

Tabela 3. Nadaljevanje - continued

Šifra MKB*	Primarna lokacija	Spol	Število novih primerov	Registrirani samo iz zdravniških poročil o vzroku smrti	
ICD* No.	Primary site	Sex	Number of new cases	Število	Odstotek**
				Registered from death certificates only	Per cent**
				Number	
153	Debelo črevo	M	213	5	2
	Colon	Ž	222	7	3
154	Rektum	M	240	8	3
	Rectum, anus	Ž	195	9	5
155	Jetra	M	46	-	-
	Liver	Ž	17	-	-
156	Žolčnik, žolčni vodi	M	35	-	-
	Gall bladder, bile ducts	Ž	51	1	2
157	Trebušna slinavka	M	92	6	7
	Pancreas	Ž	85	3	4
158	Retro-, peritonej	M	12	-	-
	Retro-, peritoneum	Ž	12	1	-
159	Prebavila, drugo	M	-	-	-
	Digestive organs, other	Ž	4	3	-
160	Nos, obnosne votline, drugo	M	19	-	-
	Nose, sinuses, etc.	Ž	10	-	-
161	Grlo	M	87	-	-
	Larynx	Ž	5	1	-
162	Sapnik, sapnica, pljuča	M	849	27	3
	Trachea, bronchus, lung	Ž	178	10	6
163	Plevra, mediastin., drugo	M	13	-	-
	Pleura, mediastinum, etc.	Ž	1	-	-
170	Kosti	M	7	-	-
	Bone	Ž	8	-	-
171	Mehka tkiva	M	18	-	-
	Soft tissues	Ž	10	-	-
172	Koža, maligni melanom	M	70	-	-
	Skin, malignant melanoma	Ž	79	-	-
173	Koža, drugi malignomi	M	354	-	-
	Skin, other malignancies	Ž	403	1	-
174	Dojka	M	12	-	-
	Breast	Ž	784	21	3
180	Maternica, vrat	Ž	211	-	-
	Uterus, cervix				
181	Horioepiteliom	Ž	-	-	-
	Chorioepithelioma				

cont. ↓

Tabela 3. Nadaljevanje - continued

<i>Šifra MKB*</i>	<i>Primarna lokacija</i>	<i>Spol</i>	<i>Število novih primerov</i>	<i>Registrirani samo iz zdravniških poročil o vzroku smrti</i>	
<i>ICD* No.</i>	<i>Primary site</i>	<i>Sex</i>	<i>Number of new cases</i>	<i>Število</i>	<i>Odstotek**</i>
				<i>Registered from death certificates only</i>	<i>Number</i>
					<i>Per cent**</i>
182	Maternica, telo, drugo Uterus, corpus, etc.	Ž	241	5	2
183	Jajčnik, jajcevod, drugo Ovary, Fallopian tube, etc.	Ž	192	3	2
184	Nožnica, vulva, drugo Vagina, vulva, etc.	Ž	48	1	2
185	Prostata Prostate	M	262	12	5
186	Modo Testis	M	58	-	-
187	Penis, obmodek, drugo Penis, epididymis, etc.	M	11	-	-
188	Mehur Bladder	M Ž	151 47	1 5	1 11
189	Ledvica, sečevod, drugo Kidney, ureter, etc.	M Ž	99 84	2 3	2 4
190	Okno Eye	M Ž	12 7	- -	- -
191	Možgani Brain	M Ž	52 61	2 1	4 2
192	Živčevje, drugo Nervous system, other	M Ž	5 6	- -	- -
193	Ščitnica Thyroid	M Ž	14 50	- 1	- 2
194	Endokrine žleze, druge Endocrine glands, other	M Ž	4 3	- -	- -
195	Slabo opredeljena lokaliz. Ill-defined site	M Ž	9 26	7 8	- 31
196	Metastaze v bezgavkah Lymph node metastases	M Ž	16 11	- -	- -
197	Met. v dihalih, prebavilih Respiratory, digestive tract met.	M Ž	59 63	5 4	8 6
198	Metastaze, druge Metastases, other	M Ž	35 27	- -	- -
199	Malignomi, neopredeljeni Malignancies, unspecified	M Ž	40 39	5 11	13 28

cont. ↓

Tabela 3. Nadaljevanje - continued

Šifra MKB*	Primarna lokacija	Spol	Število novih primerov	Registrirani samo iz zdravniških poročil o vzroku smrti Število	Odstotek**
ICD* No.	Primary site	Sex	Number of new cases	Registered from death certificates only Number	Per cent**
200	Ne-Hodgkinovi limfomi	M	52	-	-
202	Non-Hodgkin's lymphomas	Ž	49	1	2
201	Hodgkinov limfom	M	21	-	-
	Hodgkin's disease	Ž	17	-	-
203	Plazmacitom	M	20	-	-
	Plasmacytoma	Ž	24	-	-
204.0	Levkemija, limfat., akutna	M	13	-	-
	Leukaemia, lymphatic acute	Ž	14	-	-
204.1	Levkemija, limfat., kronična	M	44	1	2
	Leukaemia, lymphatic chronic	Ž	33	1	3
205	Levkemija, mieloična	M	25	-	-
	Leukaemia, myeloid	Ž	15	-	-
206	Levkemija, monocitna	M	1	-	-
	Leukaemia, monocytic	Ž	1	-	-
207	Levkemije, druge	M	8	1	-
	Leukaemias, other	Ž	3	1	-
208	Policitemija, prava	M	6	-	-
	Polycythemia vera	Ž	7	-	-
209	Mielofibroza	M	7	1	-
	Myelofibrosis	Ž	4	-	-
Zgoraj neupoštevani					
Not included above					
-	Dojka, in situ	Ž	23	-	-
	Breast, in situ				
-	Maternica, vrat, CIN III	Ž	566	-	-
	Uterus, cervix, CIN III				
-	Maligni melanom, in situ	M	7	-	-
	Malignant melanoma, in situ	Ž	11	-	-
-	Mehur, in situ	M	28	-	-
	Urinary bladder, in situ	Ž	12	-	-
2250	Možgani, benigni tumor	M	18	-	-
	Brain, benign tumor	Ž	29	-	-
2381	Možgani, neopredeljeno	M	7	1	-
	Brain, unspecified	Ž	5	-	-

* Mednarodna klasifikacija bolezni, osma revizija, 1965
International Classification of Diseases, Eighth Revision, 1965

** Odstotki niso računani pri številih pod 15
Percentages are not calculated for less than 15 cases

*** Vse spremembe CIN III, vključno šifra 2340 (in situ)
All CIN III changes including 2340 (in situ)

Tabela 4a. Število novih primerov raka po lokaciji (MKB-8), spolu in starosti - Slovenija 1995

Table 4a. Number of new cancer cases by site (ICD-8), sex, and age - Slovenia 1995

Šifra MKB	Lokacija Site	Spol Sex	Vse starosti All ages	Starost Age																	
				0-	5-	10-	15-	20-	25-	30-	35-	40-	45-	50-	55-	60-	65-	70-	75-	80+	?
140	Vse lokacije	Skupaj	7 379	27	15	22	29	38	64	108	175	299	426	578	777	1058	1186	1060	561	956	-
209	All sites	Total																			
		Moški	3 740	14	9	11	21	22	34	49	62	133	185	300	431	617	673	508	273	398	-
		Male																			
		Ženske	3 639	13	6	11	8	16	30	59	113	166	241	278	346	441	513	552	288	558	-
		Female																			
140	Ustnica	M	27	-	-	-	-	-	1	-	-	1	1	3	4	8	2	3	3	1	-
	Lip	Ž	4	-	-	-	-	-	-	-	-	-	-	-	-	-	-	-	1	1	2
141	Jezik	M	33	-	-	-	-	-	-	-	-	2	6	5	3	6	7	1	-	3	-
	Tongue	Ž	6	-	-	-	-	-	-	-	1	-	-	1	1	2	-	1	-	-	-
142	Slinavke	M	8	-	-	-	-	1	-	1	-	-	-	2	-	2	-	1	-	1	-
	Salivary glands	Ž	11	-	-	-	-	-	-	-	-	2	-	1	3	1	-	1	1	2	-
143	Dlesni	M	4	-	-	-	-	-	-	-	1	-	1	1	-	-	1	-	-	-	-
	Gum	Ž	2	-	-	-	-	-	-	-	-	-	-	-	1	-	-	-	-	1	-
144	Ustno dno	M	27	-	-	-	-	-	-	-	1	-	4	8	3	6	3	1	-	1	-
	Floor of mouth	Ž	1	-	-	-	-	-	-	-	-	-	1	-	-	-	-	-	-	-	-
145	Usta, drugo	M	28	-	-	-	-	-	-	-	-	2	2	3	9	6	4	2	-	-	-
	Mouth, other parts	Ž	6	-	-	-	-	-	-	-	-	1	1	1	-	1	1	-	1	-	-
146	Orofarinks	M	88	-	-	-	-	-	1	2	8	14	13	16	14	14	4	2	-	-	-
	Oropharynx	Ž	12	-	-	-	-	-	-	-	1	1	-	5	-	1	2	1	1	-	-
147	Epifarinks	M	9	-	-	1	-	-	1	1	-	-	-	2	1	1	-	-	2	-	-
	Epipharynx	Ž	3	-	-	-	-	-	-	-	-	-	-	1	-	-	1	1	-	-	-
148	Hipofarinks	M	43	-	-	-	-	-	-	2	2	3	4	8	14	6	3	1	-	-	-
	Hypopharynx	Ž	3	-	-	-	-	-	-	-	-	1	-	-	-	-	1	-	1	-	-
149	Žrelo, neoznačeno	M	1	-	-	-	-	-	-	-	-	-	-	-	-	-	1	-	-	-	-
	Pharynx, not specified	Ž	-	-	-	-	-	-	-	-	-	-	-	-	-	-	-	-	-	-	-
150	Požiralnik	M	69	-	-	-	-	-	1	-	-	3	8	17	11	18	6	3	2	-	-
	Esophagus	Ž	16	-	-	-	-	-	-	-	-	-	-	2	1	1	5	2	5	-	-
151	Želodec	M	310	-	-	2	-	-	1	3	11	9	19	31	55	52	45	35	47	-	-
	Stomach	Ž	222	-	-	-	1	-	2	4	5	3	6	14	25	36	44	31	51	-	-
152	Tanko črevo	M	2	-	-	-	-	-	-	-	-	-	-	1	-	-	-	-	1	-	-
	Small intestine	Ž	6	-	-	-	-	-	-	-	1	-	1	-	1	-	2	-	1	-	-
153	Debelo črevo	M	213	-	-	-	-	3	2	2	2	8	18	26	28	39	38	14	33	-	-
	Colon	Ž	222	-	-	-	-	-	-	1	7	5	19	17	30	34	41	32	36	-	-
154	Rektum	M	240	-	-	-	-	-	3	1	9	9	21	22	47	48	25	23	32	-	-
	Rectum, anus	Ž	195	-	-	-	-	1	1	-	3	9	11	18	31	31	36	16	38	-	-

cont. ↓

Tabela 4a. Nadaljevanje - continued

Šifra MKB	Lokacija	Spol	Vse starosti	Starost																	
				0-	5-	10-	15-	20-	25-	30-	35-	40-	45-	50-	55-	60-	65-	70-	75-	80+	?
ICD No.	Site	Sex	All ages	Age																	
155	Jetra	M	46	1	-	-	-	2	-	-	-	4	4	3	1	10	10	8	2	1	-
	Liver	Ž	17	-	-	-	-	-	-	-	-	-	-	1	2	2	6	5	-	1	-
156	Žolčnik, žolčni vodi	M	35	-	-	-	-	-	-	-	-	3	2	1	4	7	4	6	2	6	-
	Gall bladder, bile ducts	Ž	51	-	-	-	-	-	-	-	2	-	-	2	2	7	14	10	3	11	-
157	Trebušna slinavka	M	92	-	-	-	-	1	2	-	4	6	9	13	13	11	11	10	12	-	
	Pancreas	Ž	85	-	-	-	-	-	-	-	3	2	5	3	10	11	15	11	25	-	
158	Retro-, peritonej	M	12	-	-	-	1	-	1	1	-	1	1	1	-	2	2	1	-	1	-
	Retro-, peritoneum	Ž	12	-	-	-	-	-	-	-	1	1	-	2	3	-	4	-	1	-	
159	Prebavila, drugo	M	-	-	-	-	-	-	-	-	-	-	-	-	-	-	-	-	-	-	-
	Digestive organs, other	Ž	4	-	-	-	-	-	-	-	-	-	-	-	-	-	-	-	1	-	3
160	Nos, obnosne votl., drugo	M	19	-	-	-	1	-	-	2	2	-	-	1	3	1	2	3	1	3	-
	Nose, sinuses, etc.	Ž	10	-	1	-	-	-	-	-	-	1	1	-	1	-	4	1	-	1	-
161	Grlo	M	87	-	-	-	-	-	-	4	7	5	15	17	13	17	6	2	1	-	
	Larynx	Ž	5	-	-	-	-	-	-	-	-	-	-	1	-	2	1	1	-	-	
162	Sapnik, sapnica, pljuča	M	849	-	1	-	-	1	-	12	23	45	74	120	181	175	115	53	49	-	
	Trachea, bronchus, lung	Ž	178	-	-	1	-	-	1	1	1	10	12	16	41	44	22	9	20	-	
163	Plevra, mediastin., drugo	M	13	-	-	-	1	1	-	2	1	2	1	1	1	-	2	1	-	-	
	Pleura, mediastinum, etc.	Ž	1	-	-	-	-	-	-	-	-	-	-	-	1	-	-	-	-	-	
170	Kosti	M	7	-	-	-	2	1	1	-	-	-	-	-	1	-	2	-	-	-	
	Bone	Ž	8	-	-	3	-	-	-	1	-	1	1	-	-	1	1	-	-	-	
171	Mehka tkiva	M	18	-	2	-	1	1	-	1	2	2	1	1	3	-	2	1	-	1	
	Soft tissues	Ž	10	-	1	-	-	-	1	-	-	-	1	1	-	1	2	3	-	-	
172	Koža, maligni melanom	M	70	-	-	-	-	4	3	4	8	7	9	7	4	11	9	2	2	-	
	Skin, malignant melanoma	Ž	79	-	-	-	5	2	4	3	5	8	8	14	6	5	10	5	4	-	
173	Koža, drugi malignomi	M	354	-	-	-	1	2	2	5	11	13	31	29	45	69	59	35	52	-	
	Skin, other malignancies	Ž	403	-	-	-	-	1	4	9	7	12	18	27	41	64	69	46	105	-	
174	Dojka	M	12	-	-	-	-	-	-	-	-	-	-	2	2	2	3	3	-	-	
	Breast	Ž	784	-	-	-	2	5	5	39	61	93	96	81	87	99	92	44	80	-	
180	Maternica, vrat	Ž	211	-	-	-	2	6	22	30	34	32	15	22	13	12	10	4	9	-	
181	Horioepiteliom	Ž	-	-	-	-	-	-	-	-	-	-	-	-	-	-	-	-	-	-	
182	Maternica, telo, drugo	Ž	241	-	-	-	-	-	2	1	3	13	22	37	43	33	38	14	35	-	
183	Jajčnik, jajcevod, drugo	Ž	192	-	1	2	3	-	3	7	6	10	14	27	23	19	25	28	11	13	
	Ovary, Fallopian tube, etc.																				
184	Nožnica, vulva, drugo	Ž	48	1	-	-	-	-	-	-	-	1	4	1	4	5	5	10	7	10	-
	Vagina, vulva, etc.																				

cont. ↓

Tabela 4a. Nadaljevanje - continued

Šifra MKB	L o k a c i j a Site	Spol Sex	Vse starosti All ages	S t a r o s t i Age																	
				0-	5-	10-	15-	20-	25-	30-	35-	40-	45-	50-	55-	60-	65-	70-	75-	80+	?
185	Prostata Prostate	M	262	-	-	-	-	-	-	-	-	1	3	5	10	33	54	58	40	58	-
186	Modo Testis	M	58	-	1	-	6	9	9	15	6	5	2	1	1	-	-	1	-	2	-
187	Penis, obmodek, drugo Penis, epididymis, etc.	M	11	-	-	-	-	-	1	1	-	1	1	-	3	1	1	2	-	-	-
188	Mehur Bladder	M	151	-	-	-	-	-	-	-	2	-	4	9	10	21	39	28	15	23	-
		Ž	47	1	-	-	-	-	-	-	-	-	2	3	3	4	8	6	4	16	-
189	Ledvica, sečevod, drugo Kidney, ureter, etc.	M	99	2	1	-	-	-	-	2	-	7	6	6	15	16	17	14	5	8	-
		Ž	84	3	1	-	-	-	-	1	2	2	3	7	8	14	11	16	5	11	-
190	Oko Eye	M	12	1	-	-	-	-	-	-	-	1	1	-	2	3	1	-	-	3	-
		Ž	7	1	-	-	-	-	-	-	-	-	1	2	1	1	1	-	-	-	-
191	Možgani Brain	M	52	1	2	3	-	-	2	4	3	5	2	5	5	10	5	4	-	1	-
		Ž	61	-	2	2	1	-	2	4	2	4	5	3	7	11	8	4	4	2	-
192	Živčevje, drugo Nervous system, other	M	5	3	-	-	1	-	-	-	-	-	-	1	-	-	-	-	-	-	-
		Ž	6	3	-	-	-	-	-	-	-	-	-	1	1	-	-	1	-	-	-
193	Ščitnica Thyroid	M	14	-	1	-	-	-	1	-	1	2	-	2	1	1	2	2	1	-	-
		Ž	50	-	-	-	2	1	2	-	6	4	1	1	7	7	3	7	2	7	-
194	Endokrine žleze, druge Endocrine glands, other	M	4	-	-	-	-	-	-	-	1	-	1	1	-	-	-	1	-	-	-
		Ž	3	-	-	-	-	-	-	1	-	-	-	1	1	-	-	-	-	-	-
195	Slabo opred. lokaliz. Ill-defined site	M	9	-	-	-	-	-	-	-	-	-	-	-	1	1	-	1	2	4	-
		Ž	26	-	-	-	-	-	-	-	1	-	-	2	1	3	3	3	2	11	-
196	Metastaze v bezgavkah Lymph node metastases	M	16	-	-	-	-	-	-	-	1	-	2	2	3	5	1	-	-	2	-
		Ž	11	-	-	-	-	-	-	-	-	-	-	1	1	1	1	4	-	3	-
197	Met. v dihalih, prebavilih Respiratory, digestive tract met.	M	59	-	-	-	-	-	-	1	-	-	1	4	7	12	9	12	3	10	-
		Ž	63	-	-	-	-	-	1	-	-	1	1	1	2	3	12	14	7	21	-
198	Metastaze, drugje Metastases, other	M	35	-	-	-	-	-	-	-	-	1	2	3	6	8	7	5	1	2	-
		Ž	27	-	-	-	-	-	-	-	1	2	3	1	1	2	4	8	4	1	-
199	Malignomi, neopredeljeni Malignancies, unspecified	M	40	-	-	-	-	-	1	-	-	1	3	3	5	6	8	5	4	4	-
		Ž	39	-	-	-	-	-	-	-	-	2	-	3	1	3	7	9	7	7	-
200	Ne-Hodgkinovi limfomi	M	52	-	1	2	2	4	2	1	1	2	7	1	5	3	8	4	1	8	-
202	Non-Hodgkin's lymphomas	Ž	49	-	-	-	-	2	2	2	2	1	4	1	4	6	6	9	5	5	-
201	Hodgkinov limfom Hodgkin's disease	M	21	-	-	1	4	1	2	3	3	2	1	1	1	1	1	-	-	-	-
		Ž	17	-	-	1	2	1	4	2	1	1	2	-	-	1	-	1	1	-	-
203	Plazmacitom Plasmacytoma	M	20	-	-	-	-	-	-	-	-	-	1	-	2	4	4	4	2	3	-
		Ž	24	-	-	-	-	-	-	-	1	-	1	-	4	5	3	6	2	2	-
204.0	Levkemija, limfat. akutna Leukaemia, lymphatic, acute	M	13	6	-	1	1	1	-	-	-	1	1	1	-	1	-	-	-	-	-
		Ž	14	4	-	2	-	1	-	-	-	-	-	1	1	-	1	2	1	1	-

cont. ↓

Tabela 4a. Nadaljevanje - continued

Šifra MKB	Lokacija	Spol	Vse starosti	Starost																	
				0-	5-	10-	15-	20-	25-	30-	35-	40-	45-	50-	55-	60-	65-	70-	75-	80+	?
ICD No.	Site	Sex	All ages	Age																	
204.1	Levkemija, limfat. kron. Leukaemia, lymphatic, chronic	M	44	-	-	-	-	-	1	-	-	-	-	2	4	5	6	7	5	14	-
		Ž	33	-	-	-	-	-	-	-	-	-	2	1	4	3	8	4	3	8	-
205	Levkemija, mieloična Leukaemia, myeloic	M	25	-	-	1	-	-	-	1	-	2	1	1	4	3	3	3	3	3	-
		Ž	15	-	-	-	-	1	-	-	-	1	2	-	2	1	3	2	-	3	-
206	Levkemija, monocitna Leukaemia, monocytic	M	1	-	-	-	-	-	-	-	-	-	-	-	-	-	-	1	-	-	-
		Ž	1	-	-	-	-	-	-	-	-	-	-	-	-	-	1	-	-	-	-
207	Levkemije, druge Leukaemias, other	M	8	-	-	-	-	-	1	-	-	1	-	-	1	2	2	1	-	-	-
		Ž	3	-	-	-	-	-	-	-	-	-	-	-	-	-	-	1	-	-	2
208	Policitemija, prava Polycythemia vera	M	6	-	-	-	1	-	-	-	-	-	-	-	1	3	-	1	-	-	-
		Ž	7	-	-	-	-	-	-	-	-	-	-	-	1	2	1	1	1	1	1
209	Mielofibroza Myelofibrosis	M	7	-	-	-	-	-	-	-	-	-	-	-	-	1	1	1	2	2	-
		Ž	4	-	-	-	-	-	-	-	-	1	-	-	-	1	-	1	-	1	-
Zgoraj neupoštevani																					
Not included above																					
-	Dojka, in situ Breast, in situ	Ž	23	-	-	-	-	-	-	-	-	4	9	2	3	1	-	2	2	-	-
-	Maternica, vrat, CIN III Uterus, cervix, CIN III	Ž	566	-	-	-	2	40	104	127	132	97	44	10	5	2	2	-	1	-	-
-	Maligni melanom, in situ Malignant melanoma, in situ	M	7	-	-	-	-	-	-	1	-	1	-	2	1	-	-	1	1	-	-
		Ž	11	-	-	-	-	-	-	-	2	1	1	2	1	-	2	1	1	-	-
-	Mehur, in situ Urinary bladder, in situ	M	28	-	-	-	-	-	-	-	1	1	3	1	3	3	4	6	3	3	-
		Ž	12	-	-	-	-	-	-	-	1	-	-	1	2	-	2	3	-	3	-
2250	Možgani, benigni tumor Brain, benign tumor	M	18	1	-	-	-	-	-	1	1	2	1	-	-	4	4	3	1	-	-
		Ž	29	-	-	-	-	-	-	-	3	3	3	5	4	2	5	1	3	-	-
2381	Možgani, neopredeljeno Brain, unspecified	M	7	-	-	-	-	-	-	-	-	-	1	-	1	-	2	3	-	-	-
		Ž	5	-	-	-	-	-	-	1	-	-	-	-	1	1	-	-	1	1	-

Tabela 4b. Število novih primerov raka po lokaciji (MKB-10), spolu in starosti - Slovenija 1995

Table 4b. Number of new cancer cases by site (ICD-10), sex, and age - Slovenia 1995

Šifra MKB	Lokacija	Spol	Vse starosti	Starost																	
				0-	5-	10-	15-	20-	25-	30-	35-	40-	45-	50-	55-	60-	65-	70-	75-	80+	?
ICD	Site	Sex	All	Age																	
No.			ages																		
C00	Vse lokacije	Skupaj	7 354	27	15	22	28	38	64	108	175	298	426	578	776	1052	1182	1055	558	952	-
Ā96	All sites	Total																			
		Moški	3 726	14	9	11	20	22	34	49	62	133	185	300	430	614	670	506	271	396	-
		Male																			
		Ženske	3 628	13	6	11	8	16	30	59	113	165	241	278	346	438	512	549	287	556	-
		Female																			
C00	Ustnica	M	27	-	-	-	-	-	1	-	-	1	1	3	4	8	2	3	3	1	-
	Lip	Ž	4	-	-	-	-	-	-	-	-	-	-	-	-	-	-	1	1	2	-
C01	Baza jezika	M	2	-	-	-	-	-	-	-	-	-	-	1	-	1	-	-	-	-	-
	Base of tongue	Ž	1	-	-	-	-	-	-	-	-	-	-	-	-	1	-	-	-	-	-
C02	Jezik, drugi deli	M	30	-	-	-	-	-	-	-	-	2	6	4	3	4	7	1	-	3	-
	Tongue, other & unspecified parts	Ž	5	-	-	-	-	-	-	-	1	-	-	1	1	1	-	1	-	-	-
C03	Dlesen	M	4	-	-	-	-	-	-	-	1	-	1	1	-	-	1	-	-	-	-
	Gum	Ž	2	-	-	-	-	-	-	-	-	-	-	-	1	-	-	-	-	1	-
C04	Ustno dno	M	27	-	-	-	-	-	-	-	1	-	4	8	3	6	3	1	-	1	-
	Floor of mouth	Ž	1	-	-	-	-	-	-	-	-	-	1	-	-	-	-	-	-	-	-
C05	Nebo	M	17	-	-	-	-	-	-	-	-	2	1	1	4	4	3	2	-	-	-
	Palate	Ž	2	-	-	-	-	-	-	-	-	-	-	1	-	-	-	-	-	1	-
C06	Usta, drugi deli	M	11	-	-	-	-	-	-	-	-	-	1	2	5	2	1	-	-	-	-
	Mouth, other & unspecified parts	Ž	3	-	-	-	-	-	-	-	-	-	1	-	1	-	1	-	-	-	-
C07	Parotidna žleza	M	4	-	-	-	-	-	-	1	-	-	-	2	-	-	-	1	-	-	-
	Parotid gland	Ž	9	-	-	-	-	-	-	-	-	2	-	1	2	1	-	-	1	2	-
C08	Druge in neopredeljene velike žleze slinavke	M	3	-	-	-	-	-	-	-	-	-	-	-	-	2	-	-	-	1	-
	Other & unspec. major salivary glands	Ž	1	-	-	-	-	-	-	-	-	-	-	-	-	-	-	1	-	-	-
C09	Tonzila	M	13	-	-	-	-	-	-	-	-	1	4	4	3	-	-	1	-	-	-
	Tonsil	Ž	3	-	-	-	-	-	-	-	-	1	-	1	-	-	1	-	-	-	-
C10	Orofarinks	M	70	-	-	-	-	-	-	2	7	8	8	12	14	14	3	2	-	-	-
	Oropharynx	Ž	5	-	-	-	-	-	-	-	1	-	-	3	-	1	-	-	-	-	-
C11	Nazofarinks	M	8	-	-	1	-	-	1	1	-	-	-	2	1	1	-	-	1	-	
	Nasopharynx	Ž	2	-	-	-	-	-	-	-	-	-	-	1	-	-	1	-	-	-	-
C12	Piriformni sinus	M	21	-	-	-	-	-	-	1	1	1	2	3	7	4	1	1	-	-	-
	Pyiform sinus	Ž	1	-	-	-	-	-	-	-	-	1	-	-	-	-	-	-	-	-	-
C13	Hipofarinks	M	23	-	-	-	-	-	-	1	1	3	2	5	7	2	2	-	-	-	-
	Hypopharynx	Ž	1	-	-	-	-	-	-	-	-	-	-	-	-	-	1	-	-	-	-

cont. ↓

Tabela 4b. Nadaljevanje - continued

Šifra MKB	Lokacija	Spol	Vse starosti	Starosti																		
				0-	5-	10-	15-	20-	25-	30-	35-	40-	45-	50-	55-	60-	65-	70-	75-	80+	?	
ICD No.	Site	Sex	All ages	Age																		
C14	Druga in slabo opred. mesta na ustnici, v ustni votlini in farinksu Other and ill defined sites in the lip, oral cavity & pharynx	M	1	-	-	-	-	-	-	-	-	-	-	-	-	-	-	1	-	-	-	-
		Ž	-	-	-	-	-	-	-	-	-	-	-	-	-	-	-	-	-	-	-	-
C15	Požiralnik Oesophagus	M	69	-	-	-	-	-	-	1	-	-	3	8	17	11	18	6	3	2	-	-
		Ž	16	-	-	-	-	-	-	-	-	-	-	-	-	2	1	1	5	2	5	-
C16	Želodec Stomach	M	293	-	-	-	-	-	-	3	8	7	18	29	51	52	45	33	47	-	-	
		Ž	210	-	-	-	-	1	-	2	4	5	2	5	14	24	34	41	29	49	-	-
C17	Tanko črevo Small intestine	M	1	-	-	-	-	-	-	-	-	-	-	-	-	-	-	-	-	1	-	
		Ž	6	-	-	-	-	-	-	-	-	1	-	1	-	1	-	2	-	1	-	-
C18	Debelo črevo Colon	M	206	-	-	-	-	-	3	2	2	2	8	18	26	28	37	37	14	29	-	
		Ž	212	-	-	-	-	-	-	1	7	5	19	17	29	32	39	31	32	-	-	-
C19	Rektosigmoidna zveza Rectosigmoid junction	M	46	-	-	-	-	-	1	-	2	-	4	3	12	8	4	7	5	-	-	
		Ž	51	-	-	-	-	-	1	-	1	2	2	6	8	6	12	2	11	-	-	-
C20	Rektum Rectum	M	190	-	-	-	-	-	2	1	7	9	17	19	34	39	20	16	26	-	-	
		Ž	138	-	-	-	-	-	1	-	-	2	7	9	12	21	24	24	12	26	-	-
C21	Anus in analni kanal Anus & anal canal	M	4	-	-	-	-	-	-	-	-	-	-	-	-	1	1	1	-	1	-	
		Ž	6	-	-	-	-	-	-	-	-	-	-	-	-	2	1	-	2	1	-	-
C22	Jetra in intrahepat. vodi Liver & intrahepatic bile ducts	M	61	1	-	-	-	2	-	-	-	4	4	3	3	12	14	12	3	3	-	
		Ž	26	-	-	-	-	-	-	-	-	-	-	1	2	2	7	6	1	7	-	-
C23	Žolčnik Gallbladder	M	14	-	-	-	-	-	-	-	-	-	-	-	2	2	1	2	2	5	-	
		Ž	37	-	-	-	-	-	-	1	-	-	-	2	1	4	10	8	3	8	-	-
C24	Drugi in neopredeljeni deli biliarnega trakta Biliary tract, other & unspecified parts	M	21	-	-	-	-	-	-	-	3	2	1	2	5	3	4	-	1	-	-	
		Ž	14	-	-	-	-	-	-	1	-	-	-	1	3	4	2	-	3	-	-	-
C25	Trebušna slinavka Pancreas	M	92	-	-	-	-	1	2	-	4	6	9	13	13	11	11	10	12	-	-	
		Ž	85	-	-	-	-	-	-	-	3	2	5	3	10	11	15	11	25	-	-	-
C26	Druga in slabo opredeljena mesta v preb. organih Other & ill-defined digestive organs	M	7	-	-	-	-	-	-	-	-	-	-	-	-	2	1	-	4	-	-	
		Ž	12	-	-	-	-	-	-	-	-	-	-	-	-	1	1	2	1	7	-	-
C30	Nosna votlina in srednje uho Nasal cavity & middle ear	M	3	-	-	-	-	-	-	-	-	-	-	-	-	1	1	1	-	-	-	
		Ž	3	-	-	-	-	-	-	-	-	1	-	-	-	1	1	-	-	-	-	-
C31	Paranasalni sinusi Accessory sinuses	M	13	-	-	-	1	-	-	1	2	-	-	1	3	1	1	2	-	1	-	
		Ž	4	-	-	-	-	-	-	-	-	1	-	-	1	-	1	-	-	1	-	-
C32	Grlo Larynx	M	88	-	-	-	-	-	-	4	7	5	16	17	13	17	6	2	1	-	-	
		Ž	5	-	-	-	-	-	-	-	-	-	-	1	-	2	1	1	-	-	-	-
C33	Sapnik Trachea	M	8	-	-	-	-	-	-	-	1	1	-	1	-	3	1	-	1	-	-	
		Ž	1	-	-	-	-	-	-	-	-	-	-	-	-	1	-	-	-	-	-	-

cont. ↓

Tabela 4b. Nadaljevanje - continued

Šifra MKB	Lokacija Site	Spol Sex	Vse starosti All ages	Starost Age																	
				0-	5-	10-	15-	20-	25-	30-	35-	40-	45-	50-	55-	60-	65-	70-	75-	80+	?
C34	Sapnica in pljuča Bronchus & lung	M	838	-	-	-	-	-	1	-	12	22	44	74	119	180	172	113	53	48	-
		Ž	177	-	-	1	-	-	-	1	1	1	10	12	16	41	43	22	9	20	-
C37	Timus Thymus	M	1	-	-	-	-	-	-	-	-	-	1	-	-	-	-	-	-	-	-
		Ž	-	-	-	-	-	-	-	-	-	-	-	-	-	-	-	-	-	-	-
C38	Srce, mediastinum, plevra Heart, mediastinum & pleura	M	6	-	-	-	1	1	-	-	2	-	1	-	1	-	-	-	-	-	-
		Ž	-	-	-	-	-	-	-	-	-	-	-	-	-	-	-	-	-	-	-
C39	Druga in slabo opr. mesta v dihalih in prsnih organih Other & ill-defined sites in the resp. system & intrathoracic organs	M	-	-	-	-	-	-	-	-	-	-	-	-	-	-	-	-	-	-	-
		Ž	-	-	-	-	-	-	-	-	-	-	-	-	-	-	-	-	-	-	-
C40	Kosti, sklepni hrust. udov Bone & articular cartilage of limbs	M	4	-	-	-	1	1	1	-	-	-	-	-	-	-	1	-	-	-	-
		Ž	6	-	-	2	-	-	-	1	-	-	1	-	-	1	1	-	-	-	-
C41	Kosti, sklepni hrust., drugje Bone & articular cartilage of other & unspecified parts	M	3	-	-	-	1	-	-	-	-	-	-	1	-	1	-	-	-	-	-
		Ž	2	-	-	1	-	-	-	-	-	1	-	-	-	-	-	-	-	-	-
C43	Malignni melanom kože Malignant melanoma of skin	M	70	-	-	-	-	-	4	3	4	8	7	9	7	4	11	9	2	2	-
		Ž	80	-	-	-	-	5	2	4	3	5	9	8	14	6	5	10	5	4	-
C44	Druge maligne neopl. kože Skin, other malignomas	M	351	-	-	-	-	1	2	2	5	11	12	31	29	45	68	58	35	52	-
		Ž	401	-	-	-	-	-	1	4	9	8	12	18	27	41	64	68	46	103	-
C45	Mezoteliom Mesothelioma	M	11	-	-	-	-	-	-	-	-	1	2	2	1	2	-	2	1	-	-
		Ž	3	-	-	-	-	-	-	-	-	-	-	-	2	1	-	-	-	-	-
C46	Kaposijev sarkom Kaposi's sarcoma	M	-	-	-	-	-	-	-	-	-	-	-	-	-	-	-	-	-	-	-
		Ž	-	-	-	-	-	-	-	-	-	-	-	-	-	-	-	-	-	-	-
C47	Periferni živci in avtonomno živčevje Peripheral nerves & autonomic nervous system	M	-	-	-	-	-	-	-	-	-	-	-	-	-	-	-	-	-	-	-
		Ž	2	-	-	-	-	-	-	-	-	-	1	-	-	-	1	-	-	-	-
C48	Peritonej in retroperitonej Retroperitoneum & peritoneum	M	11	2	-	-	1	-	1	1	-	1	-	-	-	1	2	1	-	1	-
		Ž	10	1	-	-	-	-	-	-	-	1	1	-	-	3	-	3	-	1	-
C49	Drugo vezivno in mehko tkivo Other connective and soft tissue	M	16	-	2	-	1	1	-	1	2	2	1	1	2	-	2	1	-	-	-
		Ž	11	-	1	-	-	-	1	-	-	-	1	1	-	1	2	3	-	1	-
C50	Dojka Breast	M	12	-	-	-	-	-	-	-	-	-	-	2	2	2	3	3	-	-	-
		Ž	780	-	-	-	-	2	5	5	39	59	92	96	81	87	99	92	43	80	-
C51	Žensko zunanje spolovilo Vulva	Ž	30	-	-	-	-	-	-	-	-	-	1	1	4	3	4	7	3	7	-
C52	Nožnica Vagina	Ž	13	1	-	-	-	-	-	-	-	1	2	-	-	2	1	3	2	1	-
C53	Maternični vrat Cervix uteri	Ž	211	-	-	-	-	2	6	22	30	34	32	15	22	13	12	10	4	9	-

cont. ↓

Tabela 4b. Nadaljevanje - continued

Šifra MKB ICD Site No.	Lokacija Site	Spol Sex	Vse starosti All ages	Starost Age																	
				0-	5-	10-	15-	20-	25-	30-	35-	40-	45-	50-	55-	60-	65-	70-	75-	80+	?
C54	Maternično telo Corpus uteri	Ž	224	-	-	-	-	-	-	2	1	2	11	21	34	41	32	36	12	32	-
C55	Maternica, neopredeljeno Uterus, unspecified part	Ž	17	-	-	-	-	-	-	-	-	1	2	1	3	2	1	2	2	3	-
C56	Jajčnik Ovary	Ž	180	-	1	2	2	-	3	7	6	9	13	27	22	17	22	25	11	13	-
C57	Drugi in neopredeljeni ženski spolni organi Other & unspecified parts of female genital organs	Ž	16	-	-	-	-	-	-	-	-	1	2	-	1	2	3	3	2	2	-
C58	Posteljica Placenta	Ž	-	-	-	-	-	-	-	-	-	-	-	-	-	-	-	-	-	-	-
C60	Penis Penis	M	9	-	-	-	-	-	1	1	-	1	1	-	2	-	1	2	-	-	-
C61	Prostata Prostate	M	262	-	-	-	-	-	-	-	-	1	3	5	10	33	54	58	40	58	-
C62	Modo Testis	M	56	-	1	-	6	9	9	15	6	5	2	1	1	-	-	-	-	1	-
C63	Drugi in neopredeljeni moški spolni organi Other & unspecified male genital organs	M	4	-	-	-	-	-	-	-	-	-	-	-	1	1	1	1	-	-	-
C64	Ledvica razen meha Kidney, except renal pelvis	M	87	2	1	-	-	-	-	2	-	7	6	6	13	15	15	10	4	6	-
		Ž	70	3	1	-	-	-	-	1	2	1	1	7	8	11	9	13	4	9	-
C65	Ledvični meh Renal pelvis	M	10	-	-	-	-	-	-	-	-	-	-	-	1	1	2	3	1	2	-
		Ž	7	-	-	-	-	-	-	-	-	-	1	-	-	2	-	2	1	1	-
C66	Sečevod Ureter	M	1	-	-	-	-	-	-	-	-	-	-	-	-	-	-	1	-	-	-
		Ž	4	-	-	-	-	-	-	-	-	-	1	-	-	1	1	-	-	1	-
C67	Sečni mehur Bladder	M	151	-	-	-	-	-	-	2	-	4	9	10	21	39	28	15	23	-	-
		Ž	47	1	-	-	-	-	-	-	-	-	2	3	3	4	8	6	4	16	-
C68	Drugi in neopredeljeni sečni organi Other & unspecified urinary organs	M	1	-	-	-	-	-	-	-	-	-	-	-	1	-	-	-	-	-	-
		Ž	2	-	-	-	-	-	-	-	-	1	-	-	-	-	1	-	-	-	-
C69	Oko in očesni adneksi Eye and adnexa	M	10	1	-	-	-	-	-	-	-	1	1	-	2	2	1	-	-	2	-
		Ž	7	1	-	-	-	-	-	-	-	-	1	2	1	1	1	-	-	-	-
C70	Meninge Meninges	M	2	-	-	-	1	-	-	-	-	-	-	-	1	-	-	-	-	-	-
		Ž	1	-	-	-	-	-	-	-	-	-	-	-	1	-	-	-	-	-	-
C71	Možgani Brain	M	50	1	2	3	-	-	2	4	3	5	2	5	5	10	3	4	-	1	-
		Ž	59	-	2	2	1	-	2	4	2	4	4	3	7	11	7	4	4	2	-

cont. ↓

Tabela 4b. Nadaljevanje - continued

Šifra MKB	Lokacija Site	Spol Sex	Vse starosti All ages	Starost Age																	
				0-	5-	10-	15-	20-	25-	30-	35-	40-	45-	50-	55-	60-	65-	70-	75-	80+	?
C72	Hrbtni mozeg, možg. živci in drugi deli CZS Spinal cord, cranial nerves & other parts of CNS	M	-	-	-	-	-	-	-	-	-	-	-	-	-	-	-	-	-	-	
		Ž	-	-	-	-	-	-	-	-	-	-	-	-	-	-	-	-	-	-	-
C73	Ščitnica Thyroid gland	M	14	-	1	-	-	-	1	-	1	2	-	2	1	1	2	2	1	-	-
		Ž	51	-	-	-	2	1	2	-	6	4	1	1	8	7	3	7	2	7	-
C74	Nadledvična žleza Adrenal gland	M	4	1	-	-	-	-	-	-	1	-	-	1	-	-	-	1	-	-	-
		Ž	5	2	-	-	-	-	-	1	-	-	-	1	1	-	-	-	-	-	-
C75	Druge endokrine žleze in sorodne strukture Other endocr. glands & related struct.	M	-	-	-	-	-	-	-	-	-	-	-	-	-	-	-	-	-	-	
		Ž	-	-	-	-	-	-	-	-	-	-	-	-	-	-	-	-	-	-	-
C76	Druga in slabo opredeljena mesta Other & ill defined sites	M	9	-	-	-	-	-	-	-	-	-	-	-	1	1	-	1	2	4	-
		Ž	26	-	-	-	-	-	-	1	-	-	2	1	3	3	3	3	2	11	-
C77	Metastaza in neopred. maligna neopl. bezgavk Metastasis & unspecified malignant neoplasm of lymph nodes	M	16	-	-	-	-	-	-	1	-	2	2	3	5	1	-	-	2	-	
		Ž	11	-	-	-	-	-	-	-	-	-	1	1	1	1	4	-	3	-	
C78	Metastaze dihal in prebavil Metastases of respir. & digest. organs	M	44	-	-	-	-	-	1	-	-	1	4	5	10	5	8	2	8	-	
		Ž	54	-	-	-	-	1	-	-	1	1	1	2	3	11	13	6	15	-	
C79	Metastaze, drugje Metastases of other sites	M	35	-	-	-	-	-	-	-	1	2	3	6	8	7	5	1	2	-	
		Ž	27	-	-	-	-	-	-	1	2	3	1	1	2	4	8	4	1	-	
C80	Maligna neoplazma brez opredeljenega mesta Malignant neoplasm without specification of site	M	40	-	-	-	-	1	-	-	1	3	3	5	6	8	5	4	4	-	
		Ž	39	-	-	-	-	-	-	-	2	-	3	1	3	7	9	7	7	-	
C81	Hodgkinova bolezen Hodgkin's disease	M	21	-	-	1	4	1	2	3	3	2	1	1	1	1	-	-	-	-	
		Ž	17	-	-	1	2	1	4	2	1	1	2	-	-	1	-	1	1	-	
C82	Folikul. ne-Hodgk. limfom Follicular non-Hodgkin's lymphoma	M	-	-	-	-	-	-	-	-	-	-	-	-	-	-	-	-	-	-	
		Ž	3	-	-	-	-	-	-	-	-	1	-	-	-	-	1	-	1	-	
C83	Difuzni ne-Hodgk. limfom Diffuse non-Hodgkin's lymphoma	M	45	-	1	-	2	2	1	1	1	2	7	-	6	6	4	4	-	8	
		Ž	39	-	1	-	1	1	-	1	2	2	4	-	4	4	5	4	4	6	
C84	Limfomi celic T in kožni limfom celic T Peripheral & cutaneous T-cell lymphomas	M	2	-	-	-	-	-	-	-	-	-	-	-	1	1	-	-	-	-	
		Ž	1	-	-	-	-	-	-	-	-	-	-	1	-	-	-	-	-	-	
C85	Druge in neopred. vrste ne-Hodgk. limfoma Other & unspecified types of non-Hodgkin's lymphoma	M	40	-	1	4	-	3	1	2	-	2	4	2	3	3	4	2	3	6	
		Ž	37	-	-	-	-	1	2	1	-	-	1	1	2	3	6	11	6	3	
C90	Difuzni plazmocitom in malig. neopl. plazmocitov Multiple myeloma and malignant plasma cell neoplasms	M	22	-	-	-	-	-	1	-	-	1	-	2	4	5	4	2	3	-	
		Ž	24	-	-	-	-	-	-	1	-	1	-	4	5	3	6	2	2	-	

cont. ↓

Tabela 4b. Nadaljevanje - continued

Šifra MKB	I. o k a c i j a Site	Spol Sex	Vse starosti All ages	S t a r o s t A g e																	
				0-	5-	10-	15-	20-	25-	30-	35-	40-	45-	50-	55-	60-	65-	70-	75-	80+	?
C91	Limfatična levkemija Lymphoid leukaemia	M	61	6	-	1	1	1	1	-	-	2	1	3	5	8	6	7	5	14	-
		Ž	47	4	-	2	-	1	-	-	-	-	2	2	5	3	9	6	4	9	-
C92	Mieloična levkemija Myeloid leukaemia	M	25	-	-	1	-	-	-	1	-	2	1	1	4	3	3	3	3	3	-
		Ž	15	-	-	-	-	1	-	-	-	1	2	-	2	1	3	2	-	3	-
C93	Monocitna levkemija Monocytic leukaemia	M	1	-	-	-	-	-	-	-	-	-	-	-	-	-	-	1	-	-	-
		Ž	1	-	-	-	-	-	-	-	-	-	-	-	-	-	-	1	-	-	-
C94	Druge opred. levkemije Other leukaemias of specified cells	M	-	-	-	-	-	-	-	-	-	-	-	-	-	-	-	-	-	-	-
		Ž	-	-	-	-	-	-	-	-	-	-	-	-	-	-	-	-	-	-	-
C95	Levkemija z neopr. cei. tipom Leukaemia, unspecified cell type	M	2	-	-	-	-	-	1	-	-	-	-	-	-	-	-	1	-	-	-
		Ž	3	-	-	-	-	-	-	-	-	-	-	-	-	-	-	1	-	-	2
C96	Druge in neopred. maligne neopl. limfat., krvotvornega in sorodnega tkiva Other & unspecified malignant neopl. of lymphoid, haematopoietic & related tissue	M	2	-	-	-	-	-	-	-	-	1	-	-	-	1	-	-	-	-	-
		Ž	2	-	-	-	-	-	-	-	-	-	-	-	-	-	1	1	-	-	-
Zgoraj neupoštevani																					
Not included above																					
D05	Dojka, in situ Breast, in situ	Ž	23	-	-	-	-	-	-	-	-	4	9	2	3	1	-	2	2	-	-
D06	Maternični vrat, CIN III Cervix uteri, in situ	Ž	566	-	-	-	2	40	104	127	132	97	44	10	5	2	2	-	1	-	-
D03	Melanom, in situ Melanoma in situ	M	7	-	-	-	-	-	-	1	-	1	-	2	1	-	-	1	1	-	-
		Ž	11	-	-	-	-	-	-	-	2	1	1	2	1	-	2	1	1	-	-
D090	Karcinom in situ mehurja Bladder, in situ	M	28	-	-	-	-	-	-	1	1	3	1	3	3	4	6	3	3	-	-
		Ž	12	-	-	-	-	-	-	1	-	-	1	2	-	2	3	-	3	-	-
D45	Policitemija vera Polycythaemia vera	M	6	-	-	-	1	-	-	-	-	-	-	1	3	-	1	-	-	-	-
		Ž	7	-	-	-	-	-	-	-	-	-	-	-	1	2	1	1	1	1	-
D47	Druge neopl. negotovega značaja limfat., krvotvor. in sorodnega tkiva Other neopl. of uncertain or unknown behaviour of lymphoid, haematopoietic & related tissue	M	7	-	-	-	-	-	-	-	-	-	-	-	-	1	1	1	2	2	-
		Ž	4	-	-	-	-	-	-	-	-	1	-	-	-	1	-	1	-	1	-
D32	Meninge, benigna neoplazma Benign neoplasm of meninges	M	16	-	-	-	-	-	-	1	2	1	-	-	4	4	3	1	-	-	-
		Ž	27	-	-	-	-	-	-	3	3	3	4	4	2	5	1	2	-	-	-
D33	CŽS, benigna neoplazma Brain & other parts of CNS	M	2	1	-	-	-	-	1	-	-	-	-	-	-	-	-	-	-	-	-
		Ž	2	-	-	-	-	-	-	-	-	-	1	-	-	-	-	1	-	-	-
D43	CŽS, neopredeljeno CNS, uncertain or unknown	M	7	-	-	-	-	-	-	-	-	1	-	1	-	2	3	-	-	-	-
		Ž	5	-	-	-	-	-	1	-	-	-	-	1	1	-	-	1	1	-	-

Tabela 5. Incidenca raka na 100 000 prebivalcev po spolu in starosti ter kumulativna stopnja (KS) po lokaciji - Slovenija 1995

Table 5. Cancer incidence per 100 000 population by sex and age, and cumulative rate (CR) by site - Slovenia 1995

Šifra MKB ICD No.	Lokacija Site	Spol Sex	Vse starosti All ages	Starost Age																KS/CR 0-74	
				0-4	5-9	10-14	15-19	20-24	25-29	30-34	35-39	40-44	45-49	50-54	55-59	60-64	65-69	70-74	75-79		80+
140 209	Vse lokacije All sites	Skupaj Total	372.0	26.8	12.3	15.8	19.2	26.6	43.7	70.8	112.1	184.6	319.9	498.1	700.5	986.9	1294.9	1535.2	1790.9	1842.6	29.2
		Moški Male	389.1	27.1	14.4	15.5	27.0	30.2	46.6	64.6	78.7	160.4	273.5	517.8	796.0	1266.3	1802.4	2154.0	2645.6	2625.7	36.4
		Ženske Female	355.9	26.4	10.1	16.2	10.9	22.8	40.9	77.0	146.2	210.0	367.7	478.5	609.4	754.1	945.6	1214.1	1371.0	1519.4	24.6
140	Ustnica Lip	M	2.8	-	-	-	-	-	1.4	-	-	1.2	1.5	5.2	7.4	16.4	5.4	12.7	29.1	6.6	0.3
		Ž	0.4	-	-	-	-	-	-	-	-	-	-	-	-	-	-	-	2.2	4.8	5.4
141	Jezik Tongue	M	3.4	-	-	-	-	-	-	-	-	2.4	8.9	8.6	5.5	12.3	18.7	4.2	-	19.8	0.3
		Ž	0.6	-	-	-	-	-	-	-	-	1.3	-	-	1.7	1.8	3.4	-	2.2	-	-
142	Slinavke Salivary glands	M	0.8	-	-	-	-	1.4	-	1.3	-	-	-	3.5	-	4.1	-	4.2	-	6.6	0.1
		Ž	1.1	-	-	-	-	-	-	-	-	2.5	-	1.7	5.3	1.7	-	2.2	4.8	5.4	0.1
143	Dlesni Gum	M	0.4	-	-	-	-	-	-	-	1.3	-	1.5	1.7	-	-	2.7	-	-	-	-
		Ž	0.2	-	-	-	-	-	-	-	-	-	-	-	1.8	-	-	-	4.8	-	-
144	Ustno dno Floor of mouth	M	2.8	-	-	-	-	-	-	-	1.3	-	5.9	13.8	5.5	12.3	8.0	4.2	-	6.6	0.3
		Ž	0.1	-	-	-	-	-	-	-	-	-	-	1.5	-	-	-	-	-	-	-
145	Usta, drugo Mouth, other parts	M	2.9	-	-	-	-	-	-	-	-	2.4	3.0	5.2	16.6	12.3	10.7	8.5	-	-	0.3
		Ž	0.6	-	-	-	-	-	-	-	-	-	-	1.5	1.7	1.8	-	1.8	2.2	-	2.7
146	Orofarinks Oropharynx	M	9.2	-	-	-	-	-	-	1.3	2.5	9.6	20.7	22.4	29.5	28.7	37.5	17.0	19.4	-	0.8
		Ž	1.2	-	-	-	-	-	-	-	-	1.3	1.5	-	8.8	-	1.8	4.4	4.8	2.7	0.1
147	Epifarinks Epipharynx	M	0.9	-	-	1.4	-	-	-	1.3	1.3	-	-	-	3.7	2.1	2.7	-	-	13.2	0.1
		Ž	0.3	-	-	-	-	-	-	-	-	-	-	-	1.8	-	-	2.2	4.8	-	-

cont. ↓

Tabela 5. Nadaljevanje - continued

Šifra MKB	Lokacija Site	Spol Sex	Vse starosti All ages	Starost Age																KS/CR 0-74	
				0-4	5-9	10-14	15-19	20-24	25-29	30-34	35-39	40-44	45-49	50-54	55-59	60-64	65-69	70-74	75-79		80+
148	Hipoфаринкс Hypopharynx	M	4.5	-	-	-	-	-	-	-	2.5	2.4	4.4	6.9	14.8	28.7	16.1	12.7	9.7	-	0.4
		Ž	0.3	-	-	-	-	-	-	-	-	-	1.5	-	-	-	-	2.2	-	2.7	-
149	Žrelo, neoznačeno Pharynx, not specified	M	0.1	-	-	-	-	-	-	-	-	-	-	-	-	-	2.7	-	-	-	-
		Ž	-	-	-	-	-	-	-	-	-	-	-	-	-	-	-	-	-	-	-
150	Požiralnik Esophagus	M	7.2	-	-	-	-	-	-	1.3	-	-	4.4	13.8	31.4	22.6	48.2	25.4	29.1	13.2	0.7
		Ž	1.6	-	-	-	-	-	-	-	-	-	-	-	3.5	1.7	1.8	11.0	9.5	13.6	0.1
151	Želodec Stomach	M	32.3	-	-	2.8	-	-	-	1.3	3.8	13.3	13.3	32.8	57.3	112.9	139.3	190.8	339.2	310.1	2.8
		Ž	21.7	-	-	-	-	1.4	-	2.6	5.2	6.3	4.6	10.3	24.7	42.7	66.4	96.8	147.6	138.9	1.3
152	Tanko črevo Small intestine	M	0.2	-	-	-	-	-	-	-	-	-	-	-	1.8	-	-	-	-	6.6	-
		Ž	0.6	-	-	-	-	-	-	-	-	1.3	-	1.7	-	1.7	-	4.4	-	2.7	-
153	Debelo črevo Colon	M	22.2	-	-	-	-	-	4.1	2.6	2.5	2.4	11.8	31.1	48.0	57.5	104.4	161.1	135.7	217.7	2.1
		Ž	21.7	-	-	-	-	-	-	-	1.3	8.9	7.6	32.7	29.9	51.3	62.7	90.2	152.3	98.0	1.4
154	Rektum Rectum, anus	M	25.0	-	-	-	-	-	-	4.0	1.3	10.9	13.3	36.2	40.6	96.5	128.5	106.0	222.9	211.1	2.2
		Ž	19.1	-	-	-	-	1.4	1.3	-	3.8	13.7	18.9	31.7	53.0	57.1	79.2	76.2	103.5	103.5	1.3
155	Jetra Liver	M	4.8	1.9	-	-	-	2.7	-	-	-	4.8	5.9	5.2	1.8	20.5	26.8	33.9	19.4	6.6	0.5
		Ž	1.7	-	-	-	-	-	-	-	-	-	-	1.7	3.5	3.4	11.1	11.0	-	2.7	0.2
156	Žolčnik, žolčni vodi Gall bladder, bile ducts	M	3.6	-	-	-	-	-	-	-	-	3.6	3.0	1.7	7.4	14.4	10.7	25.4	19.4	39.6	0.3
		Ž	5.0	-	-	-	-	-	-	2.6	-	-	-	3.4	3.5	12.0	25.8	22.0	14.3	30.0	0.3
157	Trebušna slinavka Pancreas	M	9.6	-	-	-	-	1.4	2.6	-	4.8	8.9	15.5	24.0	26.7	29.5	46.6	96.9	79.2	79.2	0.8
		Ž	8.3	-	-	-	-	-	-	-	3.8	3.1	8.6	5.3	17.1	20.3	33.0	52.4	68.1	68.1	0.5
158	Retro-, peritonej Retro-, peritoneum	M	1.2	-	-	-	1.3	-	1.4	1.3	-	1.2	1.5	1.7	-	4.1	5.4	4.2	-	6.6	0.1
		Ž	1.2	-	-	-	-	-	-	-	-	1.3	1.5	-	3.5	5.1	-	8.8	-	2.7	0.1
159	Prebavila, drugo Digestive organs, other	M	-	-	-	-	-	-	-	-	-	-	-	-	-	-	-	-	-	-	-
		Ž	0.4	-	-	-	-	-	-	-	-	-	-	-	-	-	-	2.2	-	8.2	-

cont. ↓

Tabela 5. Nadaljevanje - continued

Šifra MKB ICD Site No.	Lokacija Site	Spol Sex	Vse starosti All ages	Starost Age																	KS/CR 0-74
				0-4	5-9	10-14	15-19	20-24	25-29	30-34	35-39	40-44	45-49	50-54	55-59	60-64	65-69	70-74	75-79	80+	
160	Nos, obnosne votl., drugo Nose, sinuses, etc.	M	2.0	-	-	-	1.3	-	-	2.6	2.5	-	-	1.7	5.5	2.1	5.4	12.7	9.7	19.8	0.2
		Ž	1.0	-	1.7	-	-	-	-	-	-	-	1.3	1.5	-	1.8	-	7.4	2.2	-	2.7
161	Grlo Larynx	M	9.1	-	-	-	-	-	-	-	5.1	8.4	7.4	25.9	31.4	26.7	45.5	25.4	19.4	6.6	0.9
		Ž	0.5	-	-	-	-	-	-	-	-	-	-	-	1.7	-	3.4	1.8	2.2	-	-
162	Sapnik, sapnica, pljuča Trachea, bronchus, lung	M	88.3	-	1.6	-	-	-	1.4	-	15.2	27.7	66.5	127.7	221.6	371.5	468.7	487.6	513.6	323.3	8.9
		Ž	17.4	-	-	1.5	-	-	-	1.3	1.3	1.3	15.3	20.7	28.2	70.1	81.1	48.4	42.8	54.5	1.3
163	Plevra, mediastin., drugo Pleura, mediastinum, etc.	M	1.4	-	-	-	1.3	1.4	-	-	2.5	1.2	3.0	1.7	1.8	2.1	-	8.5	9.7	-	0.1
		Ž	0.1	-	-	-	-	-	-	-	-	-	-	-	-	1.7	-	-	-	-	-
170	Kosti Bone	M	0.7	-	-	-	2.6	1.4	1.4	-	-	-	-	-	1.8	-	5.4	-	-	-	0.1
		Ž	0.8	-	-	4.4	-	-	-	1.3	-	1.3	1.5	-	-	1.7	1.8	-	-	-	-
171	Mehka tkiva Soft tissues	M	1.9	-	3.2	-	1.3	1.4	-	1.3	2.5	2.4	1.5	1.7	5.5	-	5.4	4.2	-	6.6	0.2
		Ž	1.0	-	1.7	-	-	-	1.4	-	-	-	1.5	1.7	-	1.7	3.7	6.6	-	-	0.1
172	Koža, maligni melanom Skin, malignant melanoma	M	7.3	-	-	-	-	-	5.5	4.0	5.1	9.6	10.3	15.5	12.9	8.2	29.5	38.2	19.4	13.2	0.7
		Ž	7.7	-	-	-	7.1	2.7	5.2	3.9	6.3	12.2	13.8	24.7	10.3	9.2	22.0	23.8	10.9	0.6	
173	Koža, drugi malignomi Skin, other malignancies	M	36.8	-	-	-	1.4	2.7	2.6	6.3	13.3	19.2	53.5	53.6	92.4	184.8	250.2	339.2	343.1	3.4	
		Ž	39.4	-	-	-	-	1.4	5.2	11.6	8.9	18.3	31.0	47.6	70.1	118.0	151.8	219.0	285.9	2.3	
174	Dojka Breast	M	1.2	-	-	-	-	-	-	-	-	-	-	3.5	3.7	4.1	8.0	12.7	-	-	0.2
		Ž	76.7	-	-	-	-	2.9	6.8	6.5	50.5	77.2	141.9	165.2	142.7	148.8	182.5	202.4	209.5	217.8	5.6
180	Maternica, vrat Uterus, cervix	Ž	20.6	-	-	-	-	2.9	8.2	28.7	38.8	43.0	48.8	25.8	38.7	22.2	22.1	22.0	19.0	24.5	1.5
181	Horioepiteliom Chorioepithelioma	Ž	-	-	-	-	-	-	-	-	-	-	-	-	-	-	-	-	-	-	-
182	Maternica, telo, drugo Uterus, corpus, etc.	Ž	23.6	-	-	-	-	-	-	2.6	1.3	3.8	19.8	37.9	65.2	73.5	60.8	83.6	66.6	95.3	1.7

cont. ↓

Tabela 5. Nadaljevanje - continued

Šifra MKB ICD Site No.	Lokacija Site	Spol Sex	Vse starosti All ages	Starost Age																KS/CR 0-74	
				0-4	5-9	10-14	15-19	20-24	25-29	30-34	35-39	40-44	45-49	50-54	55-59	60-64	65-69	70-74	75-79		80+
183	Jajčnik, jajcevod, drugo Ovary, Fallopian tube, etc.	Ž	18.8	-	1.7	2.9	4.1	-	4.1	9.1	7.8	12.7	21.4	46.5	40.5	32.5	46.1	61.6	52.4	35.4	1.5
184	Nožnica, vulva, drugo Vagina, vulva, etc.	Ž	4.7	2.0	-	-	-	-	-	-	-	1.3	6.1	1.7	7.0	8.5	9.2	22.0	33.3	27.2	0.3
185	Prostata Prostate	M	27.3	-	-	-	-	-	-	-	-	1.2	4.4	8.6	18.5	67.7	144.6	245.9	387.6	382.6	2.5
186	Modo Testis	M	6.0	-	1.6	-	7.7	12.4	12.3	19.8	7.6	6.0	3.0	1.7	1.8	-	-	4.2	-	13.2	0.4
187	Penis, območek, drugo Penis, epididymis, etc.	M	1.1	-	-	-	-	-	1.4	1.3	-	1.2	1.5	-	5.5	2.1	2.7	8.5	-	-	0.1
188	Mehur Bladder	M Ž	15.7 4.6	- 2.0	- -	- -	- -	- -	- -	2.5 -	- -	5.9 3.1	15.5 5.2	18.5 5.3	43.1 6.8	104.4 14.7	118.7 13.2	145.4 19.0	151.7 43.6	1.5 0.3	
189	Ledvica, sečevod, drugo Kidney, ureter, etc.	M Ž	10.3 8.2	3.9 6.1	1.6 1.7	- -	- -	- -	- -	2.6 1.3	- 2.6	8.4 2.5	8.9 4.6	10.4 12.0	27.7 14.1	32.8 23.9	45.5 20.3	59.4 35.2	48.5 23.8	52.8 30.0	1.0 0.6
190	Oko Eye	M Ž	1.2 0.7	1.9 2.0	- -	- -	- -	- -	- -	- -	- -	1.2 1.5	1.5 3.4	- 1.8	3.7 1.7	6.2 1.7	2.7 1.8	- -	- -	19.8 -	0.1 0.1
191	Možgani Brain	M Ž	5.4 6.0	1.9 -	3.2 3.4	4.2 2.9	- 1.4	- -	2.7 2.7	5.3 5.2	3.8 2.6	6.0 5.1	3.0 7.6	8.6 5.2	9.2 12.3	20.5 18.8	13.4 14.7	17.0 8.8	- 19.0	6.6 5.4	0.5 0.5
192	Živčevje, drugo Nervous system, other	M Ž	0.5 0.6	5.8 6.1	- -	- -	1.3 -	- -	- -	- -	- -	- -	- 1.5	- 1.7	1.8 -	- -	- 1.8	- -	- -	- -	- 0.1
193	Ščitnica Thyroid	M Ž	1.5 4.9	- -	1.6 -	- -	- 2.7	- 1.4	1.4 2.7	- -	1.3 7.8	2.4 5.1	- 1.5	3.5 1.7	1.8 12.3	2.1 12.0	5.4 5.5	8.5 15.4	9.7 9.5	- 19.1	0.1 0.3
194	Endokrine žleze, druge Endocrine glands, other	M Ž	0.4 0.3	- -	- -	- -	- -	- -	- -	- 1.3	- -	- -	1.5 -	1.7 1.7	- 1.8	- -	- -	- -	4.2 -	- -	- -

cont. ↓

Tabela 5. Nadaljevanje - continued

Šifra MKB ICD Site No.	Lokacija Site	Spol Sex	Vse starosti All ages	Starost Age																KS/CR 0-74	
				0-4	5-9	10-14	15-19	20-24	25-29	30-34	35-39	40-44	45-49	50-54	55-59	60-64	65-69	70-74	75-79		80+
195	Slabo opredeljena lokaliz. Ill-defined site	M	0.9	-	-	-	-	-	-	-	-	-	-	-	1.8	2.1	-	4.2	19.4	26.4	-
		Ž	2.5	-	-	-	-	-	-	-	-	1.3	-	-	3.4	1.8	5.1	5.5	6.6	9.5	30.0
196	Metastaze v bezgavkah Lymph node metastases	M	1.7	-	-	-	-	-	-	-	1.3	-	3.0	3.5	5.5	10.3	2.7	-	-	13.2	0.1
		Ž	1.1	-	-	-	-	-	-	-	-	-	-	1.7	1.8	1.7	1.8	8.8	-	8.2	0.1
197	Met. v dihalih, prebavilih Respiratory, digestive tract met.	M	6.1	-	-	-	-	-	-	1.3	-	-	1.5	6.9	12.9	24.6	24.1	50.9	29.1	66.0	0.6
		Ž	6.2	-	-	-	-	-	1.4	-	-	1.3	1.5	1.7	3.5	5.1	22.1	30.8	33.3	57.2	0.3
198	Metastaze, drugje Metastases, other	M	3.6	-	-	-	-	-	-	-	-	1.2	3.0	5.2	11.1	16.4	18.7	21.2	9.7	13.2	0.4
		Ž	2.6	-	-	-	-	-	-	-	1.3	2.5	4.6	1.7	1.8	3.4	7.4	17.6	19.0	2.7	0.2
199	Malignomi, neopredeljeni Malignancies, unspecified	M	4.2	-	-	-	-	1.4	-	-	-	1.2	4.4	5.2	9.2	12.3	21.4	21.2	38.8	26.4	0.4
		Ž	3.8	-	-	-	-	-	-	-	-	2.5	-	5.2	1.8	5.1	12.9	19.8	33.3	19.1	0.2
200	Ne-Hodgkinovi limfomi Non-Hodgkin's lymphomas	M	5.4	-	1.6	2.8	2.6	5.5	2.7	1.3	1.3	2.4	10.3	1.7	9.2	6.2	21.4	17.0	9.7	52.8	0.4
		Ž	4.8	-	-	-	-	2.9	2.7	2.6	2.6	1.3	6.1	1.7	7.0	10.3	11.1	19.8	23.8	13.6	0.3
201	Hodgkinov limfom Hodgkin's disease	M	2.2	-	-	1.4	5.2	1.4	2.7	4.0	3.8	2.4	1.5	1.7	1.8	2.1	2.7	-	-	-	0.2
		Ž	1.7	-	-	1.5	2.7	1.4	5.5	2.6	1.3	1.3	3.1	-	-	1.7	-	2.2	4.8	-	0.1
203	Plazmacitom Plasmacytoma	M	2.1	-	-	-	-	-	-	-	-	-	1.5	-	3.7	8.2	10.7	17.0	19.4	19.8	0.2
		Ž	2.3	-	-	-	-	-	-	-	1.3	-	1.5	-	7.0	8.5	5.5	13.2	9.5	5.4	0.2
204.0	Levkemija, limfatična, ak. Leukaemia, lymphatic, ac.	M	1.4	11.6	-	1.4	1.3	1.4	-	-	-	1.2	1.5	1.7	-	2.1	-	-	-	-	0.1
		Ž	1.4	8.1	-	2.9	-	1.4	-	-	-	-	-	-	1.7	1.8	-	1.8	4.4	4.8	2.7
204.1	Levkemija, limfatična, kron. Leukaemia, lymphatic, chron.	M	4.6	-	-	-	-	1.4	-	-	-	-	-	3.5	7.4	10.3	16.1	29.7	48.5	92.4	0.3
		Ž	3.2	-	-	-	-	-	-	-	-	-	-	3.1	1.7	7.0	5.1	14.7	8.8	14.3	21.8
205	Levkemija, mieloična Leukaemia, myeloid	M	2.6	-	-	1.4	-	-	-	1.3	-	2.4	1.5	1.7	7.4	6.2	8.0	12.7	29.1	19.8	0.2
		Ž	1.5	-	-	-	-	1.4	-	-	-	1.3	3.1	-	3.5	1.7	5.5	4.4	-	8.2	0.1
206	Levkemija, monocitna Leukaemia, monocytic	M	0.1	-	-	-	-	-	-	-	-	-	-	-	-	-	-	4.2	-	-	-
		Ž	0.1	-	-	-	-	-	-	-	-	-	-	-	-	-	-	1.8	-	-	-

cont. ↓

Tabela 5. Nadaljevanje - continued

Šifra MKB	Lokacija Site	Spol Sex	Vse starosti All ages	Starost Age																	KS/CR 0-74
				0-4	5-9	10-14	15-19	20-24	25-29	30-34	35-39	40-44	45-49	50-54	55-59	60-64	65-69	70-74	75-79	80+	
207	Levkemije, druge	M	0.8	-	-	-	-	-	1.4	-	-	1.2	-	-	1.8	4.1	5.4	4.2	-	-	0.1
	Leukaemias, other	Ž	0.3	-	-	-	-	-	-	-	-	-	-	-	-	-	1.8	-	-	5.4	-
208	Policitemija, prava	M	0.6	-	-	-	1.3	-	-	-	-	-	-	-	1.8	6.2	-	4.2	-	-	0.1
	Polycythemia vera	Ž	0.7	-	-	-	-	-	-	-	-	-	-	-	1.8	3.4	1.8	2.2	4.8	2.7	-
209	Mielofibroza	M	0.7	-	-	-	-	-	-	-	-	-	-	-	-	2.1	2.7	4.2	19.4	13.2	-
	Myelofibrosis	Ž	0.4	-	-	-	-	-	-	-	-	1.3	-	-	-	1.7	-	2.2	-	2.7	-
Zgoraj neupoštevani																					
Not included above																					
-	Dojka, in situ	Ž	2.2	-	-	-	-	-	-	-	-	5.1	13.7	3.4	5.3	1.7	-	4.4	9.5	-	0.2
	Breast, in situ																				
-	Maternica, vrat, CIN III	Ž	55.4	-	-	-	2.7	57.1	141.8	165.8	170.8	122.7	67.2	17.2	8.8	3.4	3.6	-	4.8	-	3.8
	Uterus, cervix, CIN III																				
-	Malignni melanom, in situ	M	0.7	-	-	-	-	-	1.3	-	1.2	-	3.5	1.8	-	-	4.2	9.7	-	0.1	
	Malignant melanoma, in situ	Ž	1.1	-	-	-	-	-	-	2.6	1.3	1.5	3.4	1.8	-	3.7	2.2	4.8	-	0.1	
-	Mehur, in situ	M	2.9	-	-	-	-	-	-	1.3	1.2	4.4	1.7	5.5	6.2	10.7	25.4	29.1	19.8	0.3	
	Urinary bladder, in situ	Ž	1.2	-	-	-	-	-	-	1.3	-	-	1.7	3.5	-	3.7	6.6	-	8.2	0.1	
2250	Možgani, benigni tumor	M	1.9	1.9	-	-	-	-	-	1.3	1.3	2.4	1.5	-	-	8.2	10.7	12.7	9.7	-	0.2
	Brain, benign tumor	Ž	2.8	-	-	-	-	-	-	-	3.9	3.8	4.6	8.6	7.0	3.4	9.2	2.2	14.3	-	0.2
2381	Možgani, neopredeljeno	M	0.7	-	-	-	-	-	-	-	-	-	1.5	-	1.8	-	5.4	12.7	-	-	0.1
	Brain, unspecified	Ž	0.5	-	-	-	-	-	-	1.3	-	-	-	-	1.8	1.7	-	-	4.8	2.7	-

Tabela 6. Število novih primerov raka po zdravstvenih regijah, po najpogostejših lokacijah in spolu - Slovenija 1995

Table 6. Number of new cancer cases by health regions, by most frequent sites and sex - Slovenia 1995

Zdravstvena regija Health region	Spol Sex	Skupaj All sites	L o k a c i j a (šifre MKB)* Site (ICD No.)*									Druge lokal. Other sites	219**
			140 - 209	151	153	154	162	173	174	180	182		
Slovenija skupaj	M	3740	310	213	240	849	354	12	-	-	262	1500	-
Slovenia, total	Ž	3639	222	222	195	178	403	784	211	241	-	1183	566
Celje	M	451	45	21	38	105	37	2	-	-	15	188	-
	Ž	463	33	27	26	28	47	96	40	28	-	138	50
Gorica	M	232	10	13	18	55	21	1	-	-	11	103	-
	Ž	196	12	12	11	13	15	50	9	13	-	61	34
Koper	M	267	19	12	14	66	39	1	-	-	11	105	-
	Ž	244	15	9	14	19	23	51	14	19	-	80	54
Kranj	M	376	29	20	27	90	35	4	-	-	23	148	-
	Ž	341	23	20	17	19	38	73	18	27	-	106	85
Ljubljana	M	1181	89	72	59	245	116	3	-	-	99	498	-
	Ž	1184	58	75	52	53	127	266	66	91	-	396	173
Ljublj. občine	M	722	47	44	40	129	92	3	-	-	72	295	-
	Ž	703	27	46	31	29	79	157	36	56	-	242	102
Maribor	M	492	51	27	32	127	45	1	-	-	29	180	-
	Ž	547	49	35	35	20	54	128	30	27	-	169	85
Marib. občine	M	296	37	19	20	78	25	-	-	-	19	98	-
	Ž	344	28	25	22	16	34	90	14	18	-	97	68
Murska Sobota	M	277	28	13	16	58	32	-	-	-	34	96	-
	Ž	233	16	16	9	4	50	33	3	10	-	92	6
Novo mesto	M	241	15	15	26	49	12	-	-	-	25	99	-
	Ž	222	11	11	17	10	23	44	10	15	-	81	16
Ravne	M	223	24	20	10	54	17	-	-	-	15	83	-
	Ž	209	5	17	14	12	26	43	21	11	-	60	63

* Opis šifer MKB:

Description of the ICD numbers:

151 Želodec
Stomach

153 Debelo črevo
Colon

154 Rektum
Rectum, anus

162 Sapnik, sapnica, pljuča
Trachea, bronchus, lung

173 Koža, drugi malignomi
Skin, other malignancies

174 Dojka
Breast

180 Maternica, vrat
Uterus, cervix

182 Maternica, telo, drugo
Uterus, corpus, etc.

185 Prostata
Prostate

** Neupoštevano v skupnem številu: 219 Maternica, vrat, CIN III
Not included in all sites: Uterus, cervix, CIN III

Tabela 7. Število novih primerov raka, ugotovljenih v bolnišnicah, ter število in odstotek mikroskopsko potrjenih primerov, po lokaciji in spolu - Slovenija 1995

Table 7. Total number of new cancer cases diagnosed in hospitals and number and percentage of microscopically confirmed cases, by site and sex - Slovenia 1995

Šifra MKB*	L o k a c i j a	Spol	Število novih primerov	Mikroskopsko potrjeni primeri	
				Število	Odstotek**
ICD* No.	Site	Sex	Number of new cases	Microscopically confirmed cases Number	Per cent**
140	Vse lokacije	Skupaj	7 147	6 588	92
-	All sites	Total			
209		Moški	3 631	3 336	92
		Male			
		Ženske	3 516	3 252	93
		Female			
140	Ustnica	M	27	26	96
	Lip	Ž	4	4	
141	Jezik	M	32	31	97
	Tongue	Ž	6	6	
142	Slinavke	M	8	8	
	Salivary glands	Ž	11	10	
143	Dlesni	M	4	4	
	Gum	Ž	2	2	
144	Ustno dno	M	27	27	100
	Floor of mouth	Ž	1	1	
145	Usta, drugo	M	28	28	100
	mouth, other parts	Ž	6	6	
146	Orofarinks	M	88	88	100
	Oropharynx	Ž	12	12	
147	Epifarinks	M	9	9	
	Epipharynx	Ž	3	3	
148	Hipofarinks	M	43	43	100
	Hypopharynx	Ž	3	3	
149	Žrelo, neoznačeno	M	-	-	
	Pharynx, not specified	Ž	-	-	
150	Požiralnik	M	63	59	94
	Esophagus	Ž	16	13	81
151	Želodec	M	293	270	92
	Stomach	Ž	201	175	88
152	Tanko črevo	M	1	1	
	Small intestine	Ž	6	5	

cont. ↓

Tabela 7. Nadaljevanje - continued

Šifra MKB*	L o k a c i j a	Spol	Število novih primerov	Mikroskopsko potrjeni primeri	
				Število	Odstotek**
ICD* No.	Site	Sex	Number of new cases	Microscopically confirmed cases Number	Per cent**
153	Debelo črevo	M	208	198	95
	Colon	Ž	215	193	90
154	Rektum	M	232	217	94
	Rectum, anus	Ž	186	171	92
155	Jetra	M	46	39	85
	Liver	Ž	17	14	82
156	Žolčnik, žolčni vodi	M	35	26	74
	Gall bladder, bile ducts	Ž	50	37	74
157	Trebušna slinavka	M	86	58	67
	Pancreas	Ž	82	43	54
158	Retro-, peritonej	M	12	11	
	Retro-, peritoneum	Ž	11	11	
159	Prebavila, drugo	M	-	-	
	Digestive organs, other	Ž	1	-	
160	Nos, obnosne votline, drugo	M	19	19	100
	Nose, sinuses, etc.	Ž	10	10	
161	Grlo	M	87	87	100
	Larynx	Ž	4	4	
162	Sapnik, sapnica, pljuča	M	822	754	92
	Trachea, bronchus, lung	Ž	168	155	92
163	Plevra, mediastin., drugo	M	13	13	
	Pleura, mediastinum, etc.	Ž	1	1	
170	Kosti	M	7	6	
	Bone	Ž	8	8	
171	Mehka tkiva	M	18	18	100
	Soft tissues	Ž	10	10	
172	Koža, maligni melanom	M	70	69	99
	Skin, malignant melanoma	Ž	79	79	100
173	Koža, drugi malignomi	M	354	347	98
	Skin, other malignancies	Ž	402	394	98
174	Dojka	M	12	12	
	Breast	Ž	763	731	96
180	Maternica, vrat	Ž	211	211	100
	Uterus, cervix				
181	Horioepiteliom	Ž	-	-	
	Chorioepithelioma				

cont. ↓

Tabela 7. Nadaljevanje -- continued

Šifra MKB*	L o k a c i j a Site	Spol Sex	Število novih primerov Number of new cases	Mikroskopsko potrjeni primeri	
				Število Number	Odstotek** Per cent**
182	Maternica, telo, drugo Uterus, corpus, etc.	Ž	236	232	98
183	Jajčnik, jajcevod, drugo Ovary, Fallopian tube, etc.	Ž	189	181	96
184	Nožnica, vulva, drugo Vagina, vulva, etc.	Ž	47	45	96
185	Prostata Prostate	M	250	218	87
186	Modo Testis	M	58	57	98
187	Penis, obmodek, drugo Penis, epididymis, etc.	M	11	11	
188	Mehur Bladder	M	150	144	96
		Ž	42	41	98
189	Ledvica, sečevod, drugo Kidney, ureter, etc.	M	97	85	89
		Ž	81	68	84
190	Oko Eye	M	12	9	
		Ž	7	3	
191	Možgani Brain	M	50	46	92
		Ž	60	49	82
192	Živčevje, drugo Nervous system, other	M	5	5	
		Ž	6	6	
193	Ščitnica Thyroid	M	14	13	
		Ž	49	49	100
194	Endokrine žleze, druge Endocrine glands, other	M	4	3	
		Ž	3	2	
195	Slabo opredeljena lokaliz. Ill-defined site	M	2	2	
		Ž	18	13	72
196	Metastaze v bezgavkah Lymph node metastases	M	16	15	94
		Ž	11	11	
197	Met. v dihalih, prebavilih Respiratory, digestive tract met.	M	54	25	46
		Ž	59	38	64
198	Metastaze, drugje Metastases, other	M	35	18	51
		Ž	27	16	59
199	Malignomi, neopred. Malignancies, unspecified	M	35	23	66
		Ž	28	22	79

cont. ↓

Tabela 7. Nadaljevanje - continued

Šifra MKB*	L o k a c i j a	Spol	Število novih primerov	Mikroskopsko potrjeni primeri	
				Število	Odstotek**
ICD* No.	Site	Sex	Number of new cases	Microscopically confirmed cases Number	Per cent**
200	Ne-Hodgkinovi limfomi	M	52	52	100
202	Non-Hodgkin's lymphomas	Ž	48	48	100
201	Hodgkinov limfom Hodgkin's disease	M	21	21	100
		Ž	17	17	100
203	Plazmacitom Plasmacytoma	M	20	20	100
		Ž	24	24	100
204.0	Levkemija, limfatična, akut. Leukaemia, lymphatic, acute	M	13	13	
		Ž	14	14	
204.1	Levkemija, limfatična, kron. Leukaemia, lymphatic, chronic	M	43	43	100
		Ž	32	32	100
205	Levkemija, mieloična Leukaemia, myeloic	M	25	25	100
		Ž	15	15	100
206	Levkemija, monocitna Leukaemia, monocytic	M	1	1	
		Ž	1	1	
207	Levkemije, druge Leukaemias, other	M	7	7	
		Ž	2	2	
208	Policitemija, prava Polycythemia vera	M	6	6	
		Ž	7	7	
209	Mielofibroza Myelofibrosis	M	6	6	
		Ž	4	4	
Zgoraj neupoštevani					
Not included above					
-	Dojka, in situ Breast, in situ	Ž	23	100	100
-	Maternica, vrat, CIN III Uterus, cervix, CIN III	Ž	566	566	100
-	Maligni melanom, in situ Malignant melanoma, in situ	M	7	7	
		Ž	11	11	
-	Mehur, in situ Urinary bladder, in situ	M	28	28	100
		Ž	12	12	
2250	Možgani, benigni tumor Brain, benign tumor	M	18	18	100
		Ž	29	29	100
2381	Možgani, neopredeljeno Brain, unspecified	M	7	1	
		Ž	5	5	

* Mednarodna klasifikacija bolezni, 8. revizija / International classification of diseases, 8th revision

** Odstotki niso računani pri številih pod 15 / Percentages are not calculated for less than 15 cases

Tabela 8. Število histološko (in citološko) potrjenih novih primerov raka - po histološki vrsti in lokaciji - Slovenija 1995

Table 8. Number of histologically (and cytologically) confirmed new cancer cases by histologic type and site - Slovenia 1995

Histološka vrsta	Skupaj	L o k a c i j a (šifra MKB) - Site (ICD No.)															
		140 - 209	140	141	142	143	144	145	146	147	148	149					
Histologic type	All sites	cont. →															
Vse vrste - hist.(cit.)	5818(770)	29 (1)	37	-	16 (2)	6	-	28	-	34	-	99 (1)	12	-	45 (1)	-	-
All types - hist.(cyt.)																	
Carcinoma non specified	358 (242)	-	-	-	1 (1)	-	-	-	-	-	-	2	-	-	1	-	-
Small cell carcinoma	120 (73)	-	-	-	-	-	-	-	-	-	-	-	1	-	-	-	-
Papillary carcinoma	5 (1)	-	1	-	-	-	1	-	-	-	-	-	-	-	-	-	-
Squamous carcinoma	978 (136)	28 (1)	35	-	3	6	27	-	32	-	87 (1)	9	-	43 (1)	-	-	-
Basal cell carcinoma	543 (37)	-	-	-	-	-	-	-	-	-	-	-	-	-	-	-	-
Transitional cell ca.	191	-	-	-	-	-	-	-	-	-	-	-	-	-	-	-	-
Adenocarcinoma	2777 (184)	-	-	-	4 (1)	-	-	-	1	-	2	-	-	-	-	-	-
Mucoepidermoid carcinoma	7	-	-	-	6	-	-	-	-	-	1	-	-	-	-	-	-
Fibrosarcoma	2	-	-	-	-	-	-	-	-	-	-	-	-	-	-	-	-
Fibrohistiocytic sarcoma	13	1	-	-	-	-	-	-	-	-	-	-	-	-	-	-	-
Liposarcoma	5	-	-	-	-	-	-	-	-	-	-	-	-	-	-	-	-
Leiomyosarcoma	19 (1)	-	-	-	-	-	-	-	-	-	-	-	-	-	-	-	-
Rhabdomyosarcoma	8	-	-	-	-	-	-	-	-	-	-	-	-	-	-	-	-
Endothelial vessels sarcoma	1	-	-	-	-	-	-	-	-	-	-	-	-	-	-	-	-
Perivascular sarcoma	-	-	-	-	-	-	-	-	-	-	-	-	-	-	-	-	-
Malignant mesothelioma	13 (1)	-	-	-	-	-	-	-	-	-	-	-	-	-	-	-	-
Neural sarcoma	6 (3)	-	-	-	-	-	-	-	-	-	-	-	-	-	-	-	-
Malignant paraganglioma	1	-	-	-	-	-	-	-	-	-	-	-	-	-	-	-	-
Malignant mesenchymoma	-	-	-	-	-	-	-	-	-	-	-	-	-	-	-	-	-
Miscellaneous sarcoma	1 (1)	-	-	-	-	-	-	-	-	-	-	-	-	-	-	-	-
Unclassified soft tissue sarcoma	8 (2)	-	-	-	-	-	-	-	-	-	-	-	-	-	-	-	-
Osteosarcoma	6	-	-	-	-	-	-	-	-	-	-	-	-	-	-	-	-
Chondrosarcoma	4	-	-	-	-	-	-	-	-	-	-	-	-	-	-	-	-
Complex mixed and stromal malignoma	23	-	-	-	-	-	-	-	-	-	-	-	-	-	-	-	-
Retinoblastoma	1	-	-	-	-	-	-	-	-	-	-	-	-	-	-	-	-
Cystosarcoma phyllodes	-	-	-	-	-	-	-	-	-	-	-	-	-	-	-	-	-
Malignant melanoma	163 (1)	-	-	-	-	-	-	-	-	-	-	-	-	-	-	-	-
Specialized gonadal malignoma	4	-	-	-	-	-	-	-	-	-	-	-	-	-	-	-	-
Dysgerminoma and seminoma	23 (2)	-	-	-	-	-	-	-	-	-	-	-	-	-	-	-	-
Other germ cell malignoma	37	-	-	-	-	-	-	-	-	-	-	-	-	-	-	-	-
Trophoblastic malignoma	7	-	-	-	-	-	-	-	-	-	-	-	-	-	-	-	-
Brenner tumor	-	-	-	-	-	-	-	-	-	-	-	-	-	-	-	-	-
Malignant glioma	87 (1)	-	-	-	-	-	-	-	-	-	-	-	-	-	-	-	-
Malignant meningioma	2	-	-	-	-	-	-	-	-	-	-	-	-	-	-	-	-
Non Hodgkin lymphoma	139 (30)	-	1	-	2	-	-	-	1	-	7	-	2	-	1	-	-
Hodgkin lymphoma	32 (6)	-	-	-	-	-	-	-	-	-	-	-	-	-	-	-	-
Plasma cell tumors	37 (8)	-	-	-	-	-	-	-	-	-	-	-	-	-	-	-	-
Leukemia except chronic lymphoid	69 (9)	-	-	-	-	-	-	-	-	-	-	-	-	-	-	-	-
Chronic lymphoid leukemia	66 (9)	-	-	-	-	-	-	-	-	-	-	-	-	-	-	-	-
Other lymphoreticular neoplasms	2	-	-	-	-	-	-	-	-	-	-	-	-	-	-	-	-
Mast cell sarcoma	-	-	-	-	-	-	-	-	-	-	-	-	-	-	-	-	-
Miscellaneous malignoma	26 (4)	-	-	-	-	-	-	-	-	-	-	-	-	-	-	-	-
Small cell malignoma	-	-	-	-	-	-	-	-	-	-	-	-	-	-	-	-	-
Malignoma non specified	34 (19)	-	-	-	-	-	-	-	-	-	-	-	-	-	-	-	-

Tabela 8. Nadaljevanje ... - continued

Histološka vrsta Histologic type	Skupaj All sites	L o k a c i j a (šifra MKB) - Site (ICD No.)										159 cont. →
		140 - 209	150	151	152	153	154	155	156	157	158	
Vse vrste - hist.(cit.)	5818(770)	68 (4)	437 (8)	6	388 (3)	385 (3)	45 (8)	61 (2)	80(21)	18 (4)	-	-
All types - hist.(cyt.)												
Carcinoma non specified	358 (242)	6 (3)	32 (1)	-	26	9	1	5 (1)	14 (5)	-	-	-
Small cell carcinoma	120 (73)	1	-	-	-	-	-	-	-	-	-	-
Papillary carcinoma	5 (1)	-	-	-	-	-	-	-	-	-	-	-
Squamous carcinoma	978 (136)	57 (1)	- (1)	-	-	3	-	1	-	-	-	-
Basal cell carcinoma	543 (37)	-	-	-	-	-	-	-	-	-	-	-
Transitional cell ca.	191	-	-	-	-	-	-	-	-	-	-	-
Adenocarcinoma	2777 (184)	4	372 (5)	4	357 (1)	367 (3)	41 (8)	55 (1)	64 (8)	-	-	-
Mucoepidermoid carcinoma	7	-	-	-	-	-	-	-	-	-	-	-
Fibrosarcoma	2	-	-	-	-	-	-	-	-	-	-	-
Fibrohistiocytic sarcoma	13	-	-	-	-	-	-	-	-	-	1	-
Liposarcoma	5	-	-	-	-	-	-	-	-	-	3	-
Leiomyosarcoma	19 (1)	-	1	-	1	-	-	-	-	-	5 (1)	-
Rhabdomyosarcoma	8	-	-	-	-	-	-	-	-	-	-	-
Endothelial vessels sarcoma	1	-	-	-	-	-	-	-	-	-	-	-
Perivascular sarcoma	-	-	-	-	-	-	-	-	-	-	-	-
Malignant mesothelioma	13 (1)	-	-	-	-	-	-	-	-	-	4 (1)	-
Neural sarcoma	6 (3)	-	-	-	-	-	-	-	-	-	1	-
Malignant paraganglioma	1	-	-	-	-	-	-	-	-	-	-	-
Malignant mesenchymoma	-	-	-	-	-	-	-	-	-	-	-	-
Miscellaneous sarcoma	1 (1)	-	-	-	-	-	-	-	-	-	-	-
Unclassified												
soft tissue sarcoma	8 (2)	-	-	-	-	1	1	-	-	-	- (1)	-
Osteosarcoma	6	-	-	-	-	-	-	-	-	-	-	-
Chondrosarcoma	4	-	-	-	-	-	-	-	-	-	-	-
Complex mixed and stromal malignoma	23	-	-	-	1	-	1	-	-	-	-	-
Retinoblastoma	1	-	-	-	-	-	-	-	-	-	-	-
Cystosarcoma phyllodes	-	-	-	-	-	-	-	-	-	-	-	-
Malignant melanoma	163 (1)	-	-	-	-	-	-	-	-	-	-	-
Specialized gonadal malignoma	4	-	-	-	-	-	-	-	-	-	-	-
Dysgerminoma and seminoma	23 (2)	-	-	-	-	-	-	-	-	-	- (1)	-
Other germ cell malignoma	37	-	-	-	-	-	-	-	-	-	3	-
Trophoblastic malignoma	7	-	-	-	-	-	-	-	-	-	-	-
Brenner tumor	-	-	-	-	-	-	-	-	-	-	-	-
Malignant glioma	87 (1)	-	-	-	-	-	-	-	-	-	-	-
Malignant meningioma	2	-	-	-	-	-	-	-	-	-	-	-
Non Hodgkin lymphoma	139 (30)	-	28 (1)	1	1	-	-	-	-	-	-	-
Hodgkin lymphoma	32 (6)	-	-	-	-	-	-	-	-	-	-	-
Plasma cell tumors	37 (8)	-	-	-	-	-	-	-	-	-	-	-
Leukemia except chronic lymphoid	69 (9)	-	-	-	-	-	-	-	-	-	-	-
Chronic lymphoid leukemia	66 (9)	-	-	-	-	-	-	-	-	-	-	-
Other lymphoreticular neoplasms	2	-	-	-	-	1	-	-	-	-	-	-
Mast cell sarcoma	-	-	-	-	-	-	-	-	-	-	-	-
Miscellaneous malignoma	26 (4)	-	-	-	-	-	-	-	-	-	-	-
Small cell malignoma	-	-	-	-	-	-	-	-	-	-	-	-
Malignoma non specified	34 (19)	-	4	-	2 (2)	5	1	-	2 (8)	1	-	-

Tabela 8. Nadaljevanje - continued

<i>Histološka vrsta</i>	<i>Skupaj</i>	<i>L o k a c i j a (šifra MKB) - Site (ICDNo.)</i>									
<i>Histologic type</i>	<i>All sites</i>	140 - 209	160	161	162	163	170	171	172	173	174
Vse vrste - hist.(cit.)	5818(770)	25 (4)	87 (4)	570(339)	12 (2)	13 (1)	27 (1)	147 (1)	691(50)	617(126)	
All types - hist.(cyt.)											
Carcinoma non specified	358 (242)	- -	3 (2)	92 (87)	- (1)	- -	- -	- -	- -	14 (5)	21 (99)
Small cell carcinoma	120 (73)	- -	- -	114 (72)	- -	- -	- -	- -	- -	- -	- -
Papillary carcinoma	5 (1)	1 -	- -	- -	- -	- -	- -	- -	- -	2 (1)	- -
Squamous carcinoma	978 (136)	10 (3)	84 (2)	220(113)	- -	- -	- -	- -	- -	120 (7)	- -
Basal cell carcinoma	543 (37)	- -	- -	- -	- -	- -	- -	- -	- -	539 (37)	1 -
Transitional cell ca.	191 -	1 -	- -	- -	- -	- -	- -	- -	- -	- -	- -
Adenocarcinoma	2777 (184)	3 (1)	- -	137 (67)	- -	- -	- -	- -	- -	8 -	591 (25)
Mucoepidermoid carcinoma	7 -	- -	- -	- -	- -	- -	- -	- -	- -	- -	- -
Fibrosarcoma	2 -	- -	- -	- -	- -	- -	2 -	- -	- -	- -	- -
Fibrohistiocytic sarcoma	13 -	- -	- -	- -	- -	1 -	5 -	- -	- -	5 -	- -
Liposarcoma	5 -	- -	- -	- -	- -	- -	1 -	- -	- -	- -	- -
Leiomyosarcoma	19 (1)	- -	- -	- -	- -	- -	4 -	- -	- -	- -	- -
Rhabdomyosarcoma	8 -	2 -	- -	- -	- -	- -	3 -	- -	- -	- -	- -
Endothelial vessels sarcoma	1 -	1 -	- -	- -	- -	- -	- -	- -	- -	- -	- -
Perivascular sarcoma	- -	- -	- -	- -	- -	- -	- -	- -	- -	- -	- -
Malignant mesothelioma	13 (1)	- -	- -	- -	9 -	- -	- -	- -	- -	- -	- -
Neural sarcoma	6 (3)	- -	- -	- -	- -	- -	- -	- -	- -	- -	- -
Malignant paraganglioma	1 -	- -	- -	- -	- -	- -	- -	- -	- -	- -	- -
Malignant mesenchymoma	- -	- -	- -	- -	- -	- -	- -	- -	- -	- -	- -
Miscellaneous sarcoma	1 (1)	- -	- -	- -	- -	(1)	1 -	- -	- -	- -	- -
Unclassified											
soft tissue sarcoma	8 (2)	- -	- -	- -	- -	- -	5 (1)	- -	- -	- -	- -
Osteosarcoma	6 -	- -	- -	- -	- -	6 -	- -	- -	- -	- -	- -
Chondrosarcoma	4 -	- -	- -	- -	- -	3 -	1 -	- -	- -	- -	- -
Complex mixed and stromal malignoma	23 -	- -	- -	1 -	- -	- -	- -	- -	- -	- -	- -
Retinoblastoma	1 -	- -	- -	- -	- -	- -	- -	- -	- -	- -	- -
Cystosarcoma phyllodes	- -	- -	- -	- -	- -	- -	- -	- -	- -	- -	- -
Malignant melanoma	163 (1)	1 -	- -	- -	- -	- -	- -	147 (1)	- -	- -	1 -
Specialized gonadal malignoma	4 -	- -	- -	- -	- -	- -	- -	- -	- -	- -	- -
Dysgerminoma and seminoma	23 (2)	- -	- -	- -	(1)	- -	- -	- -	- -	- -	- -
Other germ cell malignoma	37 -	- -	- -	- -	3 -	- -	- -	- -	- -	- -	- -
Trophoblastic malignoma	7 -	- -	- -	- -	- -	- -	- -	- -	- -	- -	- -
Brenner tumor	- -	- -	- -	- -	- -	- -	- -	- -	- -	- -	- -
Malignant glioma	87 (1)	- -	- -	- -	- -	- -	- -	- -	- -	- -	- -
Malignant meningioma	2 -	- -	- -	- -	- -	- -	- -	- -	- -	- -	- -
Non Hodgkin lymphoma	139 (30)	5 -	- -	3 -	- -	- -	1 -	- -	- -	3 -	2 -
Hodgkin lymphoma	32 (6)	- -	- -	- -	- -	- -	- -	- -	- -	- -	- -
Plasma cell tumors	37 (8)	1 -	- -	- -	- -	- -	- -	- -	- -	- -	- -
Leukemia except chronic lymphoid	69 (9)	- -	- -	- -	- -	- -	- -	- -	- -	- -	- -
Chronic lymphoid leukemia	66 (9)	- -	- -	- -	- -	- -	- -	- -	- -	- -	- -
Other lymphoreticular neoplasms	2 -	- -	- -	- -	- -	- -	- -	- -	- -	- -	- -
Mast cell sarcoma	- -	- -	- -	- -	- -	- -	- -	- -	- -	- -	- -
Miscellaneous malignoma	26 (4)	- -	- -	- -	- -	2 -	4 -	- -	- -	- -	- -
Small cell malignoma	- -	- -	- -	- -	- -	- -	- -	- -	- -	- -	- -
Malignoma non specified	34 (19)	- -	- -	3 -	- -	1 -	- -	- -	- -	- -	1 (2)

Tabela 8. Nadaljevanje - continued

Histološka vrsta <i>Histologic type</i>	Skupaj <i>All sites</i>	L o k a c i j a (šifra MKB) - Site (ICD No.)											
		140 - 209	180	181	182	183	184	185	186	187	188	189	
Vse vrste - hist.(cit.)	5818(770)	209 (2)	-	-	231 (1)	165(16)	44 (1)	212 (6)	57	-	10 (1)	183 (2)	150 (3)
All types - hist.(cyt.)													
Carcinoma non specified	358 (242)	9	-	-	4	8	4	64 (3)	-	-	-	8 (2)	3
Small cell carcinoma	120 (73)	1	-	-	-	-	-	1	-	-	-	1	-
Papillary carcinoma	5 (1)	-	-	-	-	-	-	-	-	-	-	-	-
Squamous carcinoma	978 (136)	158 (1)	-	-	-	-	31 (1)	1	-	-	7 (1)	2	1
Basal cell carcinoma	543 (37)	-	-	-	-	-	3	-	-	-	-	-	-
Transitional cell ca.	191	-	-	-	-	-	-	3	-	-	-	168	19
Adenocarcinoma	2777 (184)	38 (1)	-	-	208	146(16)	1	143 (3)	-	-	2	2	118 (3)
Mucoepidermoid carcinoma	7	-	-	-	-	-	-	-	-	-	-	-	-
Fibrosarcoma	2	-	-	-	-	-	-	-	-	-	-	-	-
Fibrohistiocytic sarcoma	13	-	-	-	-	-	-	-	-	-	-	-	-
Liposarcoma	5	-	-	-	-	-	-	-	-	-	1	-	-
Leiomyosarcoma	19 (1)	1	-	-	6	-	-	-	-	-	-	-	-
Rhabdomyosarcoma	8	-	-	-	-	-	1	-	-	-	-	1	-
Endothelial vessels sarcoma	1	-	-	-	-	-	-	-	-	-	-	-	-
Perivascular sarcoma	-	-	-	-	-	-	-	-	-	-	-	-	-
Malignant mesothelioma	13 (1)	-	-	-	-	-	-	-	-	-	-	-	-
Neural sarcoma	6 (3)	-	-	-	-	-	-	-	-	-	-	-	-
Malignant paraganglioma	1	-	-	-	-	-	-	-	-	-	-	-	-
Malignant mesenchymoma	-	-	-	-	-	-	-	-	-	-	-	-	-
Miscellaneous sarcoma	1 (1)	-	-	-	-	-	-	-	-	-	-	-	-
Unclassified													
soft tissue sarcoma	8 (2)	-	-	-	-	-	-	-	-	-	-	-	-
Osteosarcoma	6	-	-	-	-	-	-	-	-	-	-	-	-
Chondrosarcoma	4	-	-	-	-	-	-	-	-	-	-	-	-
Complex mixed and stromal malignoma	23	-	-	-	12	1	-	-	-	-	-	-	7
Retinoblastoma	1	-	-	-	-	-	-	-	-	-	-	-	-
Cystosarcoma phyllodes	-	-	-	-	-	-	-	-	-	-	-	-	-
Malignant melanoma	163 (1)	-	-	-	-	-	4	-	-	-	-	-	-
Specialized gonadal malignoma	4	-	-	-	-	4	-	-	-	-	-	-	-
Dysgerminoma and seminoma	23 (2)	-	-	-	-	-	-	-	22	-	-	-	-
Other germ cell malignoma	37	-	-	-	-	5	-	-	26	-	-	-	-
Trophoblastic malignoma	7	-	-	-	-	-	-	-	6	-	-	-	-
Brenner tumor	-	-	-	-	-	-	-	-	-	-	-	-	-
Malignant glioma	87 (1)	-	-	-	-	-	-	-	-	-	-	-	-
Malignant meningioma	2	-	-	-	-	-	-	-	-	-	-	-	-
Non Hodgkin lymphoma	139 (30)	-	-	-	-	1	-	-	3	-	-	-	1
Hodgkin lymphoma	32 (6)	-	-	-	-	-	-	-	-	-	-	-	-
Plasma cell tumors	37 (8)	-	-	-	-	-	-	-	-	-	-	-	-
Leukemia except chronic lymphoid	69 (9)	-	-	-	-	-	-	-	-	-	-	-	-
Chronic lymphoid leukemia	66 (9)	-	-	-	-	-	-	-	-	-	-	-	-
Other lymphoreticular neoplasms	2	-	-	-	-	-	-	-	-	-	-	-	-
Mast cell sarcoma	-	-	-	-	-	-	-	-	-	-	-	-	-
Miscellaneous malignoma	26 (4)	-	-	-	-	-	-	-	-	-	-	-	-
Small cell malignoma	-	-	-	-	-	-	-	-	-	-	-	-	-
Malignoma non specified	34 (19)	2	-	-	1 (1)	-	-	-	-	-	-	1	1

Tabela 8. Nadaljevanje - continued

<i>Histološka vrsta</i>	<i>Skupaj</i>	<i>L o k a c i j a (šifra MKB) - S i t e (ICD No.)</i>											
<i>Histologic type</i>	<i>All sites</i>	190	191	192	193	194	195	196	197	198	199		
		<i>cont. →</i>											
Vse vrste - hist.(cit.)	5818(770)	12	-	94 (1)	8 (3)	54 (8)	5	-	11 (4)	15(11)	33(30)	26 (8)	23(22)
All types - hist.(cyl.)													
Carcinoma non specified	358 (242)	1	-	-	-	6 (6)	-	-	1 (1)	3 (5)	10 (9)	4 (3)	6 (8)
Small cell carcinoma	120 (73)	-	-	-	-	-	-	-	-	-	(1)	-	1
Papillary carcinoma	5 (1)	-	-	-	-	-	-	-	-	-	-	-	-
Squamous carcinoma	978 (136)	1	-	-	-	1	-	-	1	7 (1)	1 (1)	2	(1)
Basal cell carcinoma	543 (37)	-	-	-	-	-	-	-	-	-	-	-	-
Transitional cell ca.	191	-	-	-	-	-	-	-	-	-	-	-	-
Adenocarcinoma	2777 (184)	-	-	-	-	46 (2)	3	-	8 (1)	3 (4)	20(19)	16 (4)	13(11)
Mucoepidermoid carcinoma	7	-	-	-	-	-	-	-	-	-	-	-	-
Fibrosarcoma	2	-	-	-	-	-	-	-	-	-	-	-	-
Fibrohistiocytic sarcoma	13	-	-	-	-	-	-	-	-	-	-	-	-
Liposarcoma	5	-	-	-	-	-	-	-	-	-	-	-	-
Leiomyosarcoma	19 (1)	-	-	-	-	-	-	-	-	-	1	-	-
Rhabdomyosarcoma	8	-	1	-	-	-	-	-	-	-	-	-	-
Endothelial vessels sarcoma	1	-	-	-	-	-	-	-	-	-	-	-	-
Perivascular sarcoma	-	-	-	-	-	-	-	-	-	-	-	-	-
Malignant mesothelioma	13 (1)	-	-	-	-	-	-	-	-	-	-	-	-
Neural sarcoma	6 (3)	-	-	-	-	5 (3)	-	-	-	-	-	-	-
Malignant paraganglioma	1	-	-	-	-	-	1	-	-	-	-	-	-
Malignant mesenchymoma	-	-	-	-	-	-	-	-	-	-	-	-	-
Miscellaneous sarcoma	1 (1)	-	-	-	-	-	-	-	-	-	-	-	-
Unclassified													
soft tissue sarcoma	8 (2)	-	-	-	-	-	-	1	-	-	-	-	-
Osteosarcoma	6	-	-	-	-	-	-	-	-	-	-	-	-
Chondrosarcoma	4	-	-	-	-	-	-	-	-	-	-	-	-
Complex mixed and stromal malignoma	23	-	-	-	-	-	-	-	-	-	-	-	-
Retinoblastoma	1	-	1	-	-	-	-	-	-	-	-	-	-
Cystosarcoma phyllodes	-	-	-	-	-	-	-	-	-	-	-	-	-
Malignant melanoma	163 (1)	6	-	-	-	-	-	-	2	-	-	1	1
Specialized gonadal malignoma	4	-	-	-	-	-	-	-	-	-	-	-	-
Dysgerminoma and seminoma	23 (2)	-	-	1	-	-	-	-	-	-	-	-	-
Other germ cell malignoma	37	-	-	-	-	-	-	-	-	-	-	-	-
Trophoblastic malignoma	7	-	-	-	-	-	-	-	-	-	-	-	1
Brenner tumor	-	-	-	-	-	-	-	-	-	-	-	-	-
Malignant glioma	87 (1)	-	-	87 (1)	-	-	-	-	-	-	-	-	-
Malignant meningioma	2	-	-	-	2	-	-	-	-	-	-	-	-
Non Hodgkin lymphoma	139 (30)	2	-	4	-	-	-	-	-	-	-	-	-
Hodgkin lymphoma	32 (6)	-	-	-	-	-	-	-	-	-	-	-	-
Plasma cell tumors	37 (8)	-	-	-	-	-	-	-	-	-	-	-	-
Leukemia except chronic lymphoid	69 (9)	-	-	-	-	-	-	-	-	-	-	-	-
Chronic lymphoid leukemia	66 (9)	-	-	-	-	-	-	-	-	-	-	-	-
Other lymphoreticular neoplasms	2	-	-	-	-	-	-	-	-	-	-	-	-
Mast cell sarcoma	-	-	-	-	-	-	-	-	-	-	-	-	-
Miscellaneous malignoma	26 (4)	-	-	-	-	-	1	-	-	-	-	-	-
Small cell malignoma	-	-	-	-	-	-	-	-	-	-	-	-	-
Malignoma non specified	34 (19)	-	-	2	-	1	-	1	-	(2)	-	3 (1)	1 (2)

Tabela 8. Nadaljevanje - continued

Histološka vrsta Histologic type	Skupaj All sites	L o k a c i j a (šifra MKB) - Site (ICD No.)									
		140 - 209	200	201	203	204	205	206	207	208	209
Vse vrste - hist.(cit.) All types - hist.(cyt.)	5818(770)	71(29)	32 (6)	36 (8)	90(12)	35 (5)	1 (1)	9	-	12 (1)	7 (3)
Carcinoma non specified	358 (242)	-	-	-	-	-	-	-	-	-	-
Small cell carcinoma	120 (73)	-	-	-	-	-	-	-	-	-	-
Papillary carcinoma	5 (1)	-	-	-	-	-	-	-	-	-	-
Squamous carcinoma	978 (136)	-	-	-	-	-	-	-	-	-	-
Basal cell carcinoma	543 (37)	-	-	-	-	-	-	-	-	-	-
Transitional cell ca.	191	-	-	-	-	-	-	-	-	-	-
Adenocarcinoma	2777 (184)	-	-	-	-	-	-	-	-	-	-
Mucoepidermoid carcinoma	7	-	-	-	-	-	-	-	-	-	-
Fibrosarcoma	2	-	-	-	-	-	-	-	-	-	-
Fibrohistiocytic sarcoma	13	-	-	-	-	-	-	-	-	-	-
Liposarcoma	5	-	-	-	-	-	-	-	-	-	-
Leiomyosarcoma	19 (1)	-	-	-	-	-	-	-	-	-	-
Rhabdomyosarcoma	8	-	-	-	-	-	-	-	-	-	-
Endothelial vessels sarcoma	1	-	-	-	-	-	-	-	-	-	-
Perivascular sarcoma	-	-	-	-	-	-	-	-	-	-	-
Malignant mesothelioma	13 (1)	-	-	-	-	-	-	-	-	-	-
Neural sarcoma	6 (3)	-	-	-	-	-	-	-	-	-	-
Malignant paraganglioma	1	-	-	-	-	-	-	-	-	-	-
Malignant mesenchymoma	-	-	-	-	-	-	-	-	-	-	-
Miscellaneous sarcoma	1 (1)	-	-	-	-	-	-	-	-	-	-
Unclassified											
soft tissue sarcoma	8 (2)	-	-	-	-	-	-	-	-	-	-
Osteosarcoma	6	-	-	-	-	-	-	-	-	-	-
Chondrosarcoma	4	-	-	-	-	-	-	-	-	-	-
Complex mixed and stromal malignoma	23	-	-	-	-	-	-	-	-	-	-
Retinoblastoma	1	-	-	-	-	-	-	-	-	-	-
Cystosarcoma phyllodes	-	-	-	-	-	-	-	-	-	-	-
Malignant melanoma	163 (1)	-	-	-	-	-	-	-	-	-	-
Specialized gonadal malignoma	4	-	-	-	-	-	-	-	-	-	-
Dysgerminoma and seminoma	23 (2)	-	-	-	-	-	-	-	-	-	-
Other germ cell malignoma	37	-	-	-	-	-	-	-	-	-	-
Trophoblastic malignoma	7	-	-	-	-	-	-	-	-	-	-
Brenner tumor	-	-	-	-	-	-	-	-	-	-	-
Malignant glioma	87 (1)	-	-	-	-	-	-	-	-	-	-
Malignant meningioma	2	-	-	-	-	-	-	-	-	-	-
Non Hodgkin lymphoma	139 (30)	70 (29)	-	-	-	-	-	-	-	-	-
Hodgkin lymphoma	32 (6)	-	32 (6)	-	-	-	-	-	-	-	-
Plasma cell tumors	37 (8)	-	-	36 (8)	-	-	-	-	-	-	-
Leukemia except chronic lymphoid	69 (9)	-	-	-	24 (3)	35 (5)	1 (1)	9	-	-	-
Chronic lymphoid leukemia	66 (9)	-	-	-	66 (9)	-	-	-	-	-	-
Other lymphoreticular neoplasms	2	1	-	-	-	-	-	-	-	-	-
Mast cell sarcoma	-	-	-	-	-	-	-	-	-	-	-
Miscellaneous malignoma	26 (4)	-	-	-	-	-	-	-	-	12 (1)	7 (3)
Small cell malignoma	-	-	-	-	-	-	-	-	-	-	-
Malignoma non specified	34 (19)	-	-	-	-	-	-	-	-	-	-

Tabela 9. Število primerov ne-Hodgkinovih limfomov* po lokaciji, spolu in starosti - Slovenija 1995

Table 9. Total number of non-Hodgkin's malignant lymphomas* by site, sex, and age - Slovenia 1995

Šifra MKB ICD No.	Lokacija Site	Spol Sex	Vse starosti All ages	Starost Age																	
				0-	5-	10-	15-	20-	25-	30-	35-	40-	45-	50-	55-	60-	65-	70-	75-	80+	?
	Vse lokacije All sites	Skupaj Total	171	-	4	4	3	7	4	5	3	7	17	4	16	17	20	23	13	24	-
		Moški Male	89	-	3	4	2	5	2	3	1	5	11	2	9	10	9	6	3	14	-
		Ženske Female	82	-	1	-	1	2	2	2	2	2	6	2	7	7	11	17	10	10	-
**	Glava in vrat Head and neck	M	8	-	-	-	-	1	-	1	-	-	1	-	1	1	-	-	-	3	-
		Ž	11	-	1	-	-	-	-	-	-	-	-	-	2	-	2	2	2	2	-
151	Želodec Stomach	M	17	-	-	2	-	-	-	1	-	3	2	1	2	4	-	-	2	-	-
		Ž	12	-	-	-	-	-	-	-	-	-	1	1	-	1	2	3	2	2	-
152	Tanko črevo Small intestine	M	1	-	-	-	-	-	-	-	-	-	-	-	1	-	-	-	-	-	-
		Ž	-	-	-	-	-	-	-	-	-	-	-	-	-	-	-	-	-	-	-
153	Debelo črevo Colon	M	-	-	-	-	-	-	-	-	-	-	-	-	-	-	-	-	-	-	-
		Ž	2	-	-	-	-	-	-	-	-	-	-	-	-	-	1	1	-	-	-
162	Sapnik, sapnica, pljuča Trachea, bronchus, lung	M	3	-	1	-	-	-	-	-	-	-	-	-	-	1	-	1	-	-	-
		Ž	-	-	-	-	-	-	-	-	-	-	-	-	-	-	-	-	-	-	-
171	Mehka tkiva Soft tissue	M	1	-	-	-	-	-	-	-	-	-	-	-	-	-	-	-	-	1	-
		Ž	-	-	-	-	-	-	-	-	-	-	-	-	-	-	-	-	-	-	-
173	Koža Skin	M	1	-	-	-	-	-	-	-	-	-	1	-	-	-	-	-	-	-	-
		Ž	2	-	-	-	-	-	-	-	-	-	-	-	-	-	-	1	-	1	-
174	Dojka Breast	Ž	2	-	-	-	-	-	-	-	-	1	-	-	-	-	-	-	-	1	-
183	Jajčnik, jajcevod, drugo Ovary, Fallopian tube, etc.	Ž	1	-	-	-	1	-	-	-	-	-	-	-	-	-	-	-	-	-	-
186	Modo Testis	M	3	-	1	-	-	-	-	-	-	-	-	-	-	-	-	-	1	-	1
189	Ledvica, sečevod, drugo Kidney, ureter, etc.	M	-	-	-	-	-	-	-	-	-	-	-	-	-	-	-	-	-	-	-
		Ž	1	-	-	-	-	-	-	-	-	-	-	-	-	-	-	1	-	-	-
190	Oko Eye	M	2	-	-	-	-	-	-	-	-	-	-	-	-	1	-	-	-	1	-
		Ž	-	-	-	-	-	-	-	-	-	-	-	-	-	-	-	-	-	-	-
191	Možgani Brain	M	1	-	-	-	-	-	-	-	-	-	-	-	-	-	1	-	-	-	-
		Ž	3	-	-	-	-	-	-	-	-	-	1	-	1	-	1	-	-	-	-
202	Bezgavke Lymph nodes	M	52	-	1	2	2	4	2	1	1	2	7	1	5	3	8	4	1	8	-
		Ž	48	-	-	-	2	2	2	2	2	1	4	1	4	6	5	9	5	5	-

* Vključeni so vsi citološko in/ali histološko potrjeni primeri
All cases included have been cytologically or histologically verified

** Šifre MKB/ ICD Nos.: 141, 142, 145-148, 160

Tabela 10. Število novih primerov raka po bolnišnicah ugotovitve diagnoze ter število in odstotek primerov, napotenih na Onkološki inštitut (OI) - Slovenija 1995

Table 10. Number of new cancer cases diagnosed by reporting hospitals, and number and percentage of cases referred to the Institute of Oncology (IO), Ljubljana - Slovenia 1995

<i>Bolnišnice</i>	<i>Število novih primerov</i>	<i>Napoteni na OI</i>	
<i>Hospitals</i>	<i>Number of new cases</i>	<i>Referred to the IO Number</i>	<i>Per cent*</i>
Skupaj Total	7 147	3 758	53
Onkološki inštitut, Ljubljana Institute of Oncology, Ljubljana	723	723	100
Klinični center, Ljubljana University Medical Center, Ljubljana	2 537	1 317	52
Dermatološka klinika	209	9	4
Gastroenterološka interna klinika	180	75	42
Ginekološka klinika	201	139	69
Infekcijska klinika	14	8	53
Inštitut za gerontologijo	31	13	42
Inštitut Golnik	477	308	65
Interna klinika	180	43	24
Kirurška gastroenterološka klinika	344	176	51
Klinična bolnišnica za pediatrijo	39	37	95
Klinična bolnišnica za psihiatrijo	1	-	
Klinika za maksilofacialno kirurgijo	53	46	87
Klinika za nevrokirurgijo	77	53	68
Klinika za plastično kirurgijo in opeklino	54	20	37
Klinika za torakalno kirurgijo	99	46	46
Nevrološka klinika	43	20	47
Očesna klinika	18	11	61
Ortopedska klinika	16	16	100
Otorinolaringološka klinika	202	179	89
Travmatološka klinika	4	4	
Urološka klinika	293	114	39
Splošne in specialistične bolnišnice General and special hospitals	3 802	1 666	44
Splošna bolnišnica Brežice	67	38	57
Splošna bolnišnica Celje**	709	331	47

cont. ↓

Tabela 10. Nadaljevanje - continued

<i>Bolnišnice</i>	<i>Število novih primerov</i>	<i>Napoteni na OI</i>	
<i>Hospitals</i>	<i>Number of new cases</i>	<i>Število</i>	<i>Odstotek*</i>
		<i>Referred to the IO</i>	<i>Number</i>
			<i>Per cent*</i>
Splošna bolnišnica Jesenice	137	68	50
Splošna bolnišnica Izola	187	86	46
Splošna bolnišnica Maribor	990	412	42
Splošna bolnišnica Murska Sobota	347	117	34
Splošna bolnišnica Nova Gorica	335	141	42
Splošna bolnišnica Novo mesto	357	153	43
Splošna bolnišnica Ptuj	92	50	54
Splošna bolnišnica Slovenj Gradec	254	99	39
Splošna bolnišnica Trbovlje	48	28	58
Bolnišnica za ginekologijo in porodništvo Kranj	38	26	68
Bolnišnica za ženske bolezni in porodništvo Postojna	33	19	58
Bolnišnica za zdravljenje in rehabilitacijo pljučnih bolnikov Sežana	62	26	42
Ortopedska bolnica Valdoltra	4	4	
Psihiatrična bolnišnica Begunje	1	-	
Psihiatrična bolnišnica Idrija	-	-	
Zasebne ordinacije	142	68	48
Drugi zdravstveni zavodi			
Other health institutions	86	52	60

* Odstotki niso računani pri številih pod 15
Percentages are not calculated for less than 15 cases

** Vključno bolnišnica Topolšica
Including hospital Topolšica

Tabela 11. Število in odstotek novih primerov raka, ugotovljenih v bolnišnicah, po stadiju, lokaciji in spolu - Slovenija 1995

Table 11. Number and percentage of new cancer cases reported by hospitals by stage, site and sex - Slovenia 1995

Šifra MKB	Lokacija	Spol	Število primerov	Lokaliziran		S t a d i j				Neznan	
				Število	Odstotek*	Regionarna razširitev	Oddaljena razširitev	Število	Odstotek*	Število	Odstotek*
ICD No.	Site	Sex	Number of cases	Localized Number	Per cent*	Regional Number	Per cent*	Remote Number	Per cent*	Unknown Number	Per cent*
140 209	Vse lokacije All sites	Skupaj Total	7147	2775	39	2065	29	1833	26	474	7
		Moški Male	3631	1275	35	1080	30	988	27	288	8
		Ženske Female	3516	1500	43	985	28	845	24	186	5
140	Ustnica	M	27	24	89	2	7	-	-	1	4
	Lip	Ž	4	4	-	-	-	-	-	-	-
141	Jezik	M	32	11	34	19	59	1	3	1	3
	Tongue	Ž	6	1	-	4	-	1	-	-	-
142	Slinavke	M	8	3	38	1	-	3	-	1	-
	Salivary glands	Ž	11	6	55	4	-	1	-	-	-
143	Dlesni	M	4	1	25	3	-	-	-	-	-
	Gum	Ž	2	-	-	2	-	-	-	-	-
144	Ustno dno	M	27	5	19	20	74	2	7	-	-
	Floor of mouth	Ž	1	-	-	-	-	1	-	-	-
145	Usta, drugo	M	28	11	39	12	43	5	18	-	-
	Mouth, other parts	Ž	6	4	67	2	-	-	-	-	-
146	Orofarinks	M	88	14	16	58	66	16	18	-	-
	Oropharynx	Ž	12	1	8	7	-	4	-	-	-
147	Epifarinks	M	9	-	-	9	-	-	-	-	-
	Epipharynx	Ž	3	-	-	3	-	-	-	-	-
148	Hipofarinks	M	43	5	12	31	72	6	14	1	2
	Hypopharynx	Ž	3	-	-	2	-	1	-	-	-
149	Žrelo, neoznačeno	M	-	-	-	-	-	-	-	-	-
	Pharynx, not specified	Ž	-	-	-	-	-	-	-	-	-
150	Požiralnik	M	63	15	24	34	54	8	13	6	10
	Esophagus	Ž	16	3	19	6	38	3	19	4	25
151	Želodec	M	293	59	20	102	35	98	33	34	12
	Stomach	Ž	201	46	23	71	35	49	24	35	17
152	Tanko črevo	M	1	-	-	1	-	-	-	-	-
	Small intestine	Ž	6	-	-	3	-	1	-	2	-

cont. ↓

Tabela 11. Nadaljevanje - continued

Šifra MKB	Lokacija	Spol	Število primerov	Lokaliziran		S t a d i j				Neznani	
				Število	Odstotek*	Regionarna razširitev	Odstotek*	Oddaljena razširitev	Odstotek*	Število	Odstotek*
ICD No.	Site	Sex	Number of cases	Localized		S t a g e				Unknown	
				Number	Per cent*	Regional	Per cent*	Remote	Per cent*	Number	Per cent*
153	Debelo črevo	M	208	28	13	97	47	72	35	11	5
	Colon	Ž	215	20	9	120	56	53	25	22	10
154	Rektum	M	232	35	15	129	56	44	19	24	10
	Rectum, anus	Ž	186	31	17	80	43	53	28	22	12
155	Jetra	M	46	23	50	9	20	12	26	2	4
	Liver	Ž	17	3	18	6	35	3	18	5	29
156	Žolčnik, žolčni vodi	M	35	6	17	13	37	11	31	5	14
	Gall bladder, bile ducts	Ž	50	7	14	17	34	23	46	3	6
157	Trebušna slinavka	M	86	12	14	22	26	36	42	16	19
	Pancreas	Ž	82	8	10	24	29	36	44	14	17
158	Retro-, peritonej	M	12	4		3		1		4	
	Retro-, peritoneum	Ž	11	5		5		1		-	
159	Prebavila, drugo	M	-	-		-		-		-	
	Digestive organs, other	Ž	1	-		1		-		-	
160	Nos, obnosne votl., drugo	M	19	3	16	14	74	2	11	-	-
	Nose, sinuses, etc.	Ž	10	2		4		4		-	
161	Grlo	M	87	48	55	37	43	2	2	-	-
	Larynx	Ž	4	2		2		-		-	
162	Sapnik, sapnica, pljuča	M	822	213	26	272	33	293	36	44	5
	Trachea, bronchus, lung	Ž	168	43	26	45	27	69	41	11	7
163	Plevra, mediastin., drugo	M	13	6		4		2		1	
	Pleura, mediastinum, etc.	Ž	1	1		-		-		-	
170	Kosti	M	7	2		-		3		2	
	Bone	Ž	8	4		1		3		-	
171	Mehka tkiva	M	18	10	56	6	33	2	11	-	-
	Soft tissues	Ž	10	5		2		2		1	
172	Koža, maligni melanom	M	70	48	69	15	21	3	4	4	6
	Skin, malignant melanoma	Ž	79	62	78	11	14	1	1	5	6
173	Koža, drugi malignomi	M	354	337	95	10	3	3	1	4	1
	Skin, other malignancies	Ž	402	391	97	8	2	1	-	2	-
174	Dojka	M	12	2		9		1		-	
	Breast	Ž	763	333	44	350	46	74	10	6	1
180	Maternica, vrat	Ž	211	104	49	64	30	41	19	2	1
	Uterus, cervix										
181	Horioepiteliom	Ž	-	-		-		-		-	
	Chorioepithelioma										

cont. ↓

Tabela 11. Nadaljevanje - continued

Šifra MKB	L o k a c i j a	Spol	Število primerov	Lokaliziran		S t a d i j				Neznan	
				Število	Odstotek*	Regionarna razširitev	Oddaljena razširitev	Število	Odstotek*	Število	Odstotek*
ICD No.	Site	Sex	Number of cases	Localized		S t a g e				Unknown	
				Number	Per cent*	Regional	Remote	Number	Per cent*	Number	Per cent*
182	Maternica, telo, drugo Uterus, corpus, etc.	Ž	236	175	74	36	15	16	7	9	4
183	Jajčnik, jajcevod, drugo Ovary, Fallopian tube, etc.	Ž	189	40	21	27	14	118	62	4	2
184	Nožnica, vulva, drugo Vagina, vulva, etc.	Ž	47	26	55	13	28	8	17	-	-
185	Prostata Prostate	M	250	110	44	35	14	45	18	60	24
186	Modo Testis	M	58	19	33	27	47	11	19	1	2
187	Penis, obmodek, drugo Penis, epididymis, etc.	M	11	6		5		-		-	
188	Mehur Bladder	M	150	89	59	33	22	5	3	23	15
		Ž	42	20	48	15	36	-	-	7	17
189	Ledvica, sečevod, drugo Kidney, ureter, etc.	M	97	48	49	21	22	13	13	15	15
		Ž	81	48	59	15	19	11	14	7	9
190	Oko Eye	M	12	9		2		-		1	
		Ž	7	6		-		-		1	
191	Možgani Brain	M	50	49	98	1	2	-	-	-	-
		Ž	60	58	97	2	3	-	-	-	-
192	Živčevje, drugo Nervous system, other	M	5	4		1		-		-	
		Ž	6	3		2		1		-	
193	Ščitnica Thyroid	M	14	6		7		1		-	
		Ž	49	27	55	13	27	9	18	-	-
194	Endokrine žleze, druge Endocrine glands, other	M	4	-		1		1		2	
		Ž	3	3		-		-		-	
195	Slabo opredeljena lokaliz. Ill-defined site	M	2	-		-		2		-	
		Ž	18	1	6	7	39	7	39	3	17
196	Metastaze v bezgavkah Lymph node metastases	M	16	-	-	-	-	-	-	16	100
		Ž	11	-		-		1		10	
197	Met. v dihalih, prebavilih Respiratory, digestive tract met.	M	54	-	-	-	-	53	98	1	2
		Ž	59	-	-	-	-	59	100	-	-
198	Metastaze, druge Metastases, other	M	35	-	-	-	-	35	100	-	-
		Ž	27	-	-	-	-	27	100	-	-
199	Malignomi, neopredeljeni Malignancies, unspecified	M	35	-	-	-	-	35	100	-	-
		Ž	28	-	-	-	-	28	100	-	-

cont. ↓

Tabela 11. Nadaljevanje - continued

Šifra MKB	Lokacija	Spol	Število primerov	S t a d i j (A n n - A r b o r)							
				I		II		III + IV		Neznani	
ICD No.	Site	Sex	Number of cases	Število Number	Odstotek* Per cent*	Število Number	Odstotek* Per cent*	Število Number	Odstotek* Per cent*	Število Number	Odstotek* Per cent*
200	Ne-Hodgkinovi limfomi	M	52	8	15	8	15	28	54	8	15
+ 202	Non-Hodgkin's limfomas	Ž	48	6	13	5	10	27	56	10	21
201	Hodgkinov limfom	M	21	2	10	7	33	12	57	-	-
	Hodgkin's disease	Ž	17	1	6	6	35	9	53	1	6

* Odstotki niso računani pri številih pod 15

* Percentages are not calculated for less than 15 cases

Tabela 12. Število umrlih za rakom in drugimi neoplazmami po lokaciji, spolu in starosti - Slovenija 1995

Table 12. Number of cancer and other neoplasms deaths by site, sex and age - Slovenia 1995

Šifra MKB	Lokacija Site	Spol Sex	Vse starosti All ages	Starost Age																	
				0-	5-	10-	15-	20-	25-	30-	35-	40-	45-	50-	55-	60-	65-	70-	75-	80-	85+
140 209	Vse lokacije All sites	Skupaj Total	4 578	4	8	7	5	8	17	22	57	117	184	309	461	663	749	693	410	519	345
		Moški Male	2 528	3	7	2	4	7	9	9	24	74	98	177	314	424	452	359	196	235	134
		Ženske Female	2 050	1	1	5	1	1	8	13	33	43	86	132	147	239	297	334	214	284	211
140	Ustnica Lip	M	2	-	-	-	-	-	-	-	-	-	-	-	-	-	1	-	-	-	1
		Ž	1	-	-	-	-	-	-	-	-	-	-	-	-	-	1	-	-	-	-
141	Jezik Tongue	M	18	-	-	-	-	-	-	1	2	1	2	2	4	2	-	2	2	-	-
		Ž	4	-	-	-	-	-	-	-	-	1	-	-	-	1	1	-	1	-	-
142	Slinavke Salivary glands	M	5	-	-	-	-	-	-	-	-	-	-	-	1	3	-	-	-	-	1
		Ž	1	-	-	-	-	-	-	-	-	-	-	-	-	-	-	-	-	-	1
143	Dlesni Gum	M	1	-	-	-	-	-	-	-	-	-	-	-	-	1	-	-	-	-	-
		Ž	-	-	-	-	-	-	-	-	-	-	-	-	-	-	-	-	-	-	-
144	Ustno dno Floor of mouth	M	8	-	-	-	-	-	-	-	-	-	-	2	2	2	2	-	-	-	-
		Ž	1	-	-	-	-	-	-	-	-	-	-	-	-	-	1	-	-	-	-
145	Usta, drugo Mouth, other parts	M	7	-	-	-	-	-	-	-	-	-	1	2	2	2	-	-	-	-	-
		Ž	2	-	-	-	-	-	-	-	-	-	-	-	-	1	-	-	-	-	1
146	Orofarinks Oropharynx	M	45	-	-	-	-	-	-	-	-	6	8	11	5	7	5	2	1	-	-
		Ž	2	-	-	-	-	-	-	-	-	-	-	-	-	1	1	-	-	-	-
147	Epifarinks Epipharynx	M	4	-	-	-	-	-	-	-	-	-	-	-	1	1	1	1	-	-	-
		Ž	-	-	-	-	-	-	-	-	-	-	-	-	-	-	-	-	-	-	-
148	Hipofarinks Hypopharynx	M	27	-	-	-	-	-	-	1	2	1	5	6	6	4	2	-	-	-	-
		Ž	1	-	-	-	-	-	-	-	-	-	-	-	-	-	1	-	-	-	-
149	Žrelo, neoznačeno Pharynx, not specified	M	13	-	-	-	-	-	-	1	-	1	1	-	1	4	2	1	-	1	1
		Ž	1	-	-	-	-	-	-	-	-	-	-	-	-	-	-	1	-	-	-
150	Požiralnik Esophagus	M	78	-	-	-	-	-	-	-	-	6	9	14	12	22	8	2	4	1	-
		Ž	15	-	-	-	-	-	-	-	-	-	1	-	2	1	5	2	2	2	-
151	Želodec Stomach	M	262	-	-	-	-	-	-	4	5	6	15	23	37	42	49	35	32	14	-
		Ž	192	-	-	-	-	-	1	4	2	5	6	8	18	23	30	25	39	31	-
152	Tanko črevo Small intestine	M	4	-	-	-	-	-	-	-	-	-	-	1	-	2	-	-	-	-	1
		Ž	9	-	-	-	-	-	-	-	2	-	-	-	-	1	2	2	2	-	-
153	Debelo črevo Colon	M	164	-	-	-	1	-	1	3	2	6	7	18	22	33	26	16	17	12	-
		Ž	140	-	-	-	-	-	-	2	1	2	11	9	10	18	24	18	26	19	-
154	Rektum Rectum, anus	M	156	-	-	-	-	-	-	-	3	2	12	10	24	27	21	21	20	16	-
		Ž	172	-	-	-	-	-	-	1	2	4	8	6	19	28	35	21	28	20	-

cont. ↓

Tabela 12. Nadaljevanje - continued

Šifra MKB	Lokacija	Spol	Vse starosti	Starost																		
				0-	5-	10-	15-	20-	25-	30-	35-	40-	45-	50-	55-	60-	65-	70-	75-	80-	85+	
ICD No.	Site	Sex	All ages	Age																		
155	Jetra	M	36	-	-	-	-	-	-	-	-	-	3	2	3	2	4	7	8	1	6	-
	Liver	Ž	19	-	-	-	-	-	-	-	-	-	-	1	1	1	5	4	2	3	2	
156	Žolčnik, žolčni vodi	M	29	-	-	-	-	-	-	-	-	2	1	1	4	2	6	3	3	5	2	
	Gall bladder, bile ducts	Ž	59	-	-	-	-	-	-	-	2	1	2	3	4	5	10	13	6	10	3	
157	Trebušna slinavka	M	92	-	-	-	-	2	1	-	3	2	6	13	12	9	19	9	11	5		
	Pancreas	Ž	87	-	-	-	-	-	-	-	1	4	3	5	10	10	17	10	15	12		
158	Retro-, peritonej	M	9	-	-	-	-	-	-	-	-	-	-	-	2	4	3	-	-	-	-	
	Retro-, peritoneum	Ž	15	-	-	-	-	-	-	1	-	2	-	-	1	1	5	3	1	1		
159	Prebaviša, drugo	M	8	-	-	-	-	-	-	-	-	1	-	-	2	1	2	1	1	-	-	
	Digestive organs, other	Ž	8	-	-	-	-	-	-	-	-	-	-	-	-	1	-	2	3	2		
160	Nos, obnosne votl., drugo	M	4	-	-	-	-	-	-	-	-	-	-	1	2	-	-	-	-	1	-	
	Nose, sinuses, etc.	Ž	1	-	-	-	-	-	-	-	-	-	-	-	-	-	-	1	-	-	-	
161	Grlo	M	66	-	-	-	-	-	-	1	4	3	7	17	10	14	4	-	5	1		
	Larynx	Ž	4	-	-	-	-	-	-	-	-	-	-	-	2	1	1	-	-	-		
162	Sapnik, sapnica, pljuča	M	784	-	-	-	-	2	-	6	12	25	55	125	166	173	109	51	41	19		
	Trachea, bronchus, lung	Ž	171	-	-	-	-	1	2	5	8	13	12	33	32	24	15	18	8			
163	Plevra, mediastin., drugo	M	20	-	-	-	-	-	-	1	3	2	3	4	2	4	-	1	-	-		
	Pleura, mediastinum, etc.	Ž	6	-	-	-	-	-	-	-	-	-	-	1	1	3	-	-	-	1		
170	Kosti	M	14	-	-	-	2	1	-	-	-	2	-	-	2	3	2	2	-	-	-	
	Bone	Ž	10	-	1	-	1	-	-	-	-	1	-	1	2	-	1	-	3	-		
171	Mehka tkiva	M	5	-	-	-	-	-	1	-	-	-	-	2	-	1	-	-	-	1		
	Soft tissues	Ž	8	-	-	-	-	-	1	-	-	-	-	-	2	2	-	-	3	-		
172	Koža, maligni melanom	M	31	-	-	-	-	-	1	1	6	1	6	4	5	1	1	-	3	2		
	Skin, malignant melanoma	Ž	42	-	-	-	-	2	1	1	2	1	6	2	4	3	4	6	7	3		
173	Koža, drugi malignomi	M	3	-	-	-	-	-	-	-	-	-	-	-	1	-	1	-	1	-		
	Skin, other malignancies	Ž	5	-	-	-	-	-	-	-	-	-	-	-	-	1	-	-	2	2		
174	Dojka	M	6	-	-	-	-	-	-	-	-	1	2	-	-	2	1	-	-	-		
	Breast	Ž	375	-	-	-	-	1	2	8	11	31	48	39	30	47	52	35	35	36		
180	Maternica, vrat	Ž	74	-	-	-	-	-	2	5	4	9	6	5	12	7	7	9	7	1		
	Uterus, cervix																					
181	Horioepiteliom	Ž	-	-	-	-	-	-	-	-	-	-	-	-	-	-	-	-	-	-		
	Chorioepithelioma																					
182	Maternica, telo, drugo	Ž	109	-	-	-	-	-	1	-	3	2	-	10	17	15	25	13	13	10		
	Uterus, corpus, etc.																					
183	Jajčnik, jajcevod, drugo	Ž	103	-	-	-	-	-	1	2	2	5	8	13	18	13	18	4	10	9		
	Ovary, Fallopian tube, etc.																					
184	Nožnica, vulva, drugo	Ž	23	-	-	-	-	-	-	-	-	1	4	2	-	1	5	1	3	6		
	Vagina, vulva, etc.																					

cont. ↓

Tabela 12. Nadaljevanje - continued

Šifra MKB	Lokacija Site	Spol Sex	Vse starosti All ages	Starost Age																		
				0-	5-	10-	15-	20-	25-	30-	35-	40-	45-	50-	55-	60-	65-	70-	75-	80-	85+	
185	Prostata Prostate	M	189	-	-	-	-	-	-	-	-	-	1	2	1	8	18	30	38	26	39	26
186	Modo Testis	M	3	-	-	-	-	1	-	-	-	1	-	-	-	-	-	-	-	-	1	-
187	Penis, obmodek, drugo Penis, epididymis, etc.	M	1	-	-	-	-	-	-	-	-	-	1	-	-	-	-	-	-	-	-	-
188	Mehur Bladder	M	74	-	-	-	-	-	-	-	-	-	-	3	5	11	17	15	8	9	6	
		Ž	22	-	-	-	-	-	-	-	-	-	-	-	1	3	3	2	3	1	9	
189	Ledvica, sečevod, drugo Kidney, ureter, etc.	M	44	-	-	-	-	-	-	-	1	3	5	4	5	6	4	8	1	5	2	
		Ž	42	-	1	-	-	-	-	-	1	-	2	3	2	5	8	6	6	7	1	
190	Oko Eye	M	2	-	-	-	-	-	-	-	-	-	-	-	1	-	-	1	-	-	-	
		Ž	1	-	-	-	-	-	-	-	-	-	-	-	-	1	-	-	-	-	-	
191	Možgani Brain	M	54	-	5	1	-	-	-	2	1	3	7	6	6	11	7	3	-	1	1	
		Ž	44	-	-	1	-	-	3	2	1	3	1	2	6	9	7	4	3	1	1	
192	Živčevje, drugo Nervous system, other	M	7	1	-	-	-	-	-	-	-	1	1	1	-	-	2	1	-	-	-	
		Ž	4	-	-	-	-	-	-	-	1	-	-	-	1	2	-	-	-	-	-	
193	Ščitnica Thyroid	M	5	-	-	-	-	-	-	-	-	-	-	-	1	1	1	-	2	-	-	
		Ž	21	-	-	-	-	-	-	-	-	-	-	1	-	2	1	4	3	2	2	6
194	Endokrine žleze, druge Endocrine glands, other	M	3	1	-	-	-	-	-	-	-	-	-	-	-	-	-	2	-	-	-	
		Ž	3	-	1	-	-	-	-	-	-	-	-	-	-	1	-	1	-	-	-	-
195	Slabo opred. lokaliz. Ill-defined site	M	14	-	-	-	-	-	-	-	1	-	1	-	1	-	2	3	4	2		
		Ž	17	-	-	-	-	-	-	-	-	-	-	-	1	1	2	2	-	8	3	
199	Malignomi, neopredeljeni Malignancies, unspecified	M	92	-	-	-	-	-	-	1	3	6	3	14	17	14	11	5	10	8		
		Ž	104	-	-	-	-	-	-	1	1	2	3	4	13	20	17	12	17	14		
200	Ne-Hodgkinovi limfomi	M	37	-	1	-	1	3	1	-	1	2	-	2	3	5	2	3	3	6	4	
202	Non-Hodgkin's lymphomas	Ž	36	1	1	-	-	-	-	1	-	-	1	1	2	4	7	9	5	3	1	
201	Hodgkinov limfom Hodgkin's disease	M	7	-	-	-	-	-	-	-	-	-	-	2	-	1	4	-	-	-	-	
		Ž	6	-	-	-	-	-	-	-	-	-	-	1	-	2	2	-	-	1	-	
203	Plazmicitom Plasmacytoma	M	34	-	-	-	-	-	-	-	1	1	1	5	8	5	2	1	6	4		
		Ž	34	-	-	-	-	-	-	-	-	-	2	4	5	8	5	4	5	1		
204.0	Levkemija, limfat. akutna Leukaemia, lymphatic, acute	M	11	1	1	-	1	1	1	1	-	1	1	-	1	-	-	-	1	-		
		Ž	9	2	-	-	-	-	-	-	-	-	1	1	-	1	1	1	1	1		
204.1	Levkemija, limfat. kron. Leukaemia, lymphatic, chronic	M	15	-	-	-	-	-	-	-	-	-	-	-	1	3	1	4	1	1	4	
		Ž	14	-	-	-	-	-	-	-	-	-	-	-	-	2	1	4	1	4	2	
205	Levkemija, mieloična Leukaemia, myeloic	M	22	-	-	-	-	2	-	1	3	2	2	2	1	4	2	2	1	-		
		Ž	23	-	-	-	-	1	-	-	2	1	1	3	3	4	3	1	3	1		
206	Levkemija, monocitna Leukaemia, monocytic	M	1	-	-	-	-	-	-	-	-	-	-	-	-	-	-	1	-	-	-	
		Ž	1	-	-	-	-	1	-	-	-	-	-	-	-	-	-	-	-	-	-	

cont. ↓

Tabela 12. Nadaljevanje - continued

Šifra MKB ICD Site No.	Lokacija Site	Spol Sex	Vse starosti All ages	Starost Age																	
				0-	5-	10-	15-	20-	25-	30-	35-	40-	45-	50-	55-	60-	65-	70-	75-	80-	85+
207	Levkemije, druge Leukaemias, other	M	9	-	-	-	-	-	1	-	-	2	-	-	-	2	1	-	2	1	-
		Ž	7	-	-	-	-	-	-	-	1	-	1	-	-	-	2	1	-	1	1
208	Policitemija, prava Polycythemia vera	M	2	-	-	-	-	-	-	-	-	-	-	1	-	-	-	-	-	1	-
		Ž	2	-	-	-	-	-	-	-	-	-	-	-	1	-	-	-	-	1	-
Zgoraj neupoštevani Not included above																					
2250	Možgani, benigni tumor Brain, benign tumor	M	2	-	-	-	-	-	-	-	-	1	-	-	-	-	1	-	-	-	-
		Ž	2	-	-	-	-	-	-	-	-	-	-	1	-	-	-	-	-	1	-
2381	Možgani, neopredeljeno Brain, unspecified	M	7	-	-	1	-	-	-	-	-	-	-	1	1	1	1	1	2	-	-
		Ž	8	-	-	-	-	-	1	-	-	-	-	-	1	1	1	1	1	1	1
	Druge neoplazme Other neoplasms	M	20	-	-	-	-	-	-	-	-	-	-	-	1	1	1	4	8	5	-
		Ž	30	-	-	-	-	-	-	-	-	1	-	1	1	-	5	5	3	4	10

Tabela 13. Število vseh živih bolnikov z rakom po spolu in izbrani primarni lokaciji - Slovenija, 31. 12. 1995

Table 13. Prevalence of cancer patients by sex and selected primary site - Slovenia, Dec. 31, 1995

<i>Lokacija</i> <i>Site</i>	<i>Vsi</i> <i>Total</i>	<i>Moški</i> <i>Males</i>	<i>Ženske</i> <i>Females</i>
Vse lokacije/ All sites	38405	14187	24218
Koža, drugi malignomi Skin, other malignancies	7821	3327	4494
Dojka Breast	6203	53	6150
Maternica, vrat Uterus, cervix	3036	-	3036
Maternica, telo Uterus, corpus	2568	-	2568
Danka Rectum	1745	887	858
Debelo črevo Colon	1628	754	874
Želodec Stomach	1408	784	624
Pljuča Lung	1346	1097	249
Koža, maligni melanom Skin, malignant melanoma	1189	426	763
Jajčniki Ovary, Fallopian tube	937	-	937
Prostata Prostate	917	917	-
Usta in žrelo Mouth & pharynx	887	724	163
Ledvica Kidney, ureter	811	444	367
Grlo Larynx	772	693	79
Mehur Bladder	768	579	189

INCIDENCA RAKA V SLOVENIJI 1995
CANCER INCIDENCE IN SLOVENIA 1995

Po mnenju Ministrstva za kulturo Republike Slovenije, št. 415-111/98 z dne 2. februar 1998, šteje publikacija med proizvode, za katere se plačuje 5-odstotni davek od prometa proizvodov.