

PRIMOŽ RAMOVŠ

(1977)

ELEMENTI

ZA
KVINTET TROBIL

DRUŠTVO SLOVENSKEGA SKLADATELJEV

EDICIJE DSS

844

Začelena postavitev na odru:

Trbn.

lor.

Tr.

Tr.

Tr. pice.

Komponirano po naročilu Inštituta slovenskih
skladateljev na kriptet trbil SF



MD 1718/2000

I.

♩ = 60

5"

Tromba piccola in $\left[\begin{matrix} \text{Lib alto} \\ \text{2 alto} \end{matrix} \right]$

 Tromba in $\left[\begin{matrix} \text{2a} \\ \text{e} \end{matrix} \right]$

 Coro in $\left[\begin{matrix} \text{1a} \\ \text{f} \end{matrix} \right]$

 Trombone

 Tuba

ff sempre e marcatissimo, con molta intensità

ff sempre e marcatissimo, con molta intensità

4" 5-6"

ff sempre e marcatissimo, con molta intensità

4 5

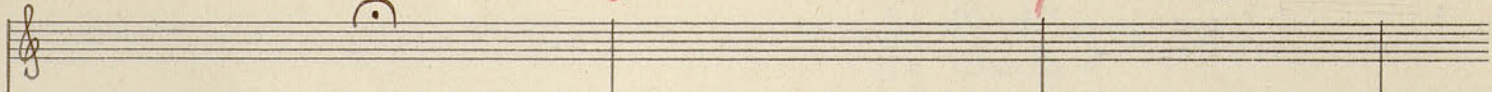
← 9" →

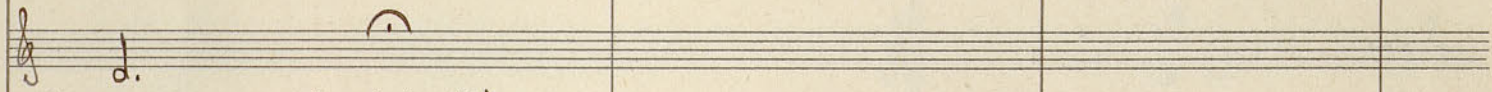
6

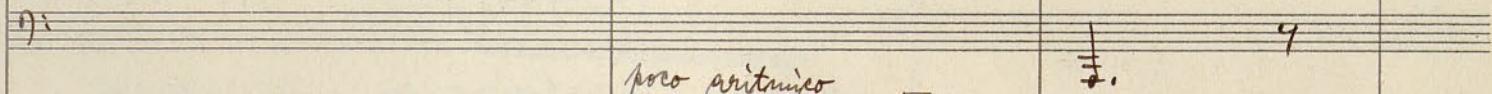
3"

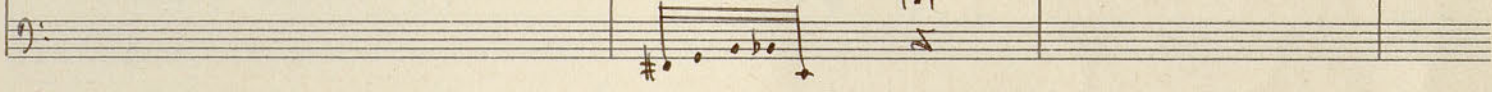
7

2"

Tr. p. 

Tr. 
Assurmo, con molta intensità

Tuba. 
poco aritmico

Tb. 

Tr. p. 
8

Tr. 
9

Cor. 

Tr. p. 
10

Tr. 
11

Cor. 
2

Tuba. 
con sord. S

Tb. 

12 13

Tr. p.
Tr.
Cor.
Tuba.

14

Tr. p.
Tr.
Cor.
Tuba.
Db.

son sord. C

15 16 17 2-3"

Tr.
Tuba.
Db.

via sord.



18 19

Tr. p.

Tr.

Cor.

Tuba.

20 ca 1" 22 23

Tr. p.

Tr.

Cor.

Tuba.

Tb.

24 2-3" 25 26 1-2" 27 tr#

Tr. p.

Tr.

Cor.

Tuba.

Tb.

28 1" 29 30 6" 31

Tr. p. *ff* *p*

Tr. *ff* *p*

Cor. *ff* *p*

Tuba *ff* *p*

Tb. *ff* *p*

← 4" → 32 33 2-3" 34 ca 4"

Tr. p. *con sord. S* *p*

Tr. *con sord. S* *p*

Cor. *con sord.* *mf* *p*

Tuba *con sord. C*

Tb. *p*

35 36 ca 5"

Tuba *poco ritmico* *mp*

Tb. *p*

3-4" 38 ca 6" 39 1" 40 3-4"

In. p. 37

In.

Clar.

Tubn.

Tb.

41 1" 42 ca 5"

In. p.

In.

Clar.

Tubn.

II.

1 ♩ = 60 ca 4" 2 ca 4"

Clar.

Tubn.

pp sempre

lento

pp sempre

3 ca 4" 4 ca 2" 5

In. p.
In.
Clar.
Tuba.

con sord. S
ff

6 7

In. p.
In.
Clar.
Tuba.

via sord.
ff

8 9 10

In. p.
In.
Clar.
Tuba.
Tb.

con sord. S
mf
mf stem.
p
pp

Tr. p. *p* □ M

Tr. □ *p*

Clar. *p*

Tuba. *p*

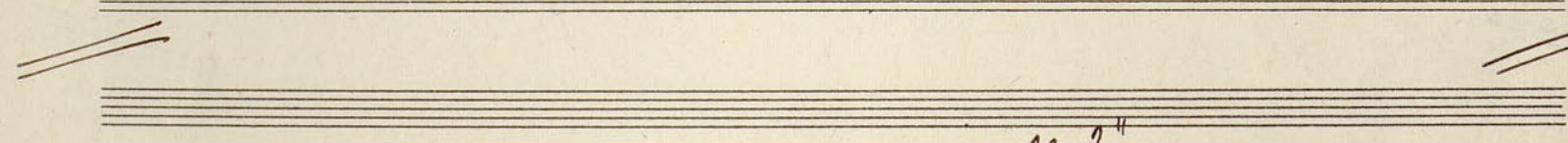
Tb. *p*



Clar. *resc.*

Tuba. *resc.*

Tb. *resc.*



Tr. p. 12 *ca 2^u 13 □*

Tr. □

Clar. *f*

Tuba. *f*

Tb. *f*

14 15 16

Handwritten musical score for measures 14, 15, and 16. The score is arranged in five staves: Tr. p., Tr., Cor., Tuba, and Eb. Measures 14 and 15 feature a dense texture of sixteenth notes in the woodwinds and strings, with dynamics ranging from *p* to *ff*. Measure 16 shows a shift in texture with sustained notes and accents in the woodwinds and strings, and a melodic line in the tuba. A *mf* dynamic is marked in the Eb staff at the start of measure 16.

17 18 3"

Handwritten musical score for measures 17 and 18. Measures 17 and 18 are marked with *via sord.* (via sordina) in the woodwinds. The Cor. staff has a *ca 2"* marking. The Tuba staff has a square box. The Eb staff has a *ff* dynamic and a melodic line. Measure 18 includes a *3"* marking and a *1" > 2"* marking. The score is divided into three measures by vertical lines.

19 20 21

Handwritten musical score for measures 19, 20, and 21. Measure 19 features a melodic line in the Tr. p. and Tr. staves with a *ff* dynamic. Measure 20 has a *ff* dynamic and a melodic line in the Tr. p. and Tr. staves. Measure 21 has a *ff* dynamic and a melodic line in the Tr. p. and Tr. staves. The Cor. staff has a *b±* marking. The Tuba staff has a *ff* dynamic. The Eb staff has a *ff* dynamic and a melodic line. The score is divided into three measures by vertical lines.

22 23 24 1-2" 25 >

Tr. p.
Tr.
Cor.
Tbn.
Tb.

Detailed description: This block contains the first system of a musical score, covering measures 22 to 25. The staves are labeled Tr. p., Tr., Cor., Tbn., and Tb. Measure 22 shows a bassoon (Tb.) with a note marked with an accent (>). Measure 23 features a tuba (Tbn.) with a note marked with an accent (>) and a dynamic marking of *ff*. Measure 24 has a tuba (Tbn.) with a note marked with an accent (>) and a dynamic marking of *ff*. Measure 25 shows a trumpet (Tr. p.) and trombone (Tr.) with notes marked with accents (>). The notation includes various accidentals and slurs.

26 1-2" 27 28

Tr. p.
Tr.
Cor.
Tbn.
Tb.

ff sempre
ff sempre
ff sempre
ff sempre

Detailed description: This block contains the second system of the musical score, covering measures 26 to 28. The staves are labeled Tr. p., Tr., Cor., Tbn., and Tb. Measure 26 shows a trumpet (Tr. p.) and trombone (Tr.) with notes marked with accents (>) and a dynamic marking of *ff sempre*. Measure 27 features a tuba (Tbn.) with a note marked with an accent (>) and a dynamic marking of *ff sempre*. Measure 28 shows a trumpet (Tr. p.) and trombone (Tr.) with notes marked with accents (>) and a dynamic marking of *ff sempre*. The notation includes various accidentals and slurs.

Tr. p.
Tr.
Cor.
Tbn.
Tb.

Detailed description: This block contains the third system of the musical score, covering measures 29 to 31. The staves are labeled Tr. p., Tr., Cor., Tbn., and Tb. The notation includes various accidentals and slurs. The bassoon (Tb.) staff has a note marked with an accent (>) and a dynamic marking of *ff sempre*.



Handwritten musical score for measures 29, 30, and 31. The score is arranged in five staves, labeled from top to bottom as *Tr. p.*, *Tr.*, *Cor.*, *Tuba.*, and *Tb.*. Measure 29 shows the beginning of the section with various notes and accidentals. Measure 30 features a prominent melodic line in the *Tr. p.* staff. Measure 31 shows the continuation of the piece, with some staves ending in rests or specific notes. The notation includes various accidentals (sharps, flats, naturals) and note values.

Handwritten musical score for measures 32 and 33. The score continues in the same five-staff format: *Tr. p.*, *Tr.*, *Cor.*, *Tuba.*, and *Tb.*. Measure 32 shows the start of the second system. Measure 33 contains more complex musical notation, including slurs, accents, and dynamic markings. The *Tr. p.* staff has a *resc.* marking. The *Cor.* staff has a *p* marking. The *Tuba.* staff has a *f* marking. The *Tb.* staff has a *p* marking. The notation is dense with notes and accidentals.

Handwritten musical score for measures 34, 35, and 36. The score continues in the same five-staff format: *Tr. p.*, *Tr.*, *Cor.*, *Tuba.*, and *Tb.*. Measure 34 shows the start of the third system. Measure 35 contains more complex musical notation, including slurs, accents, and dynamic markings. The *Tr. p.* staff has a *resc.* marking. The *Cor.* staff has a *p* marking. The *Tuba.* staff has a *f* marking. The *Tb.* staff has a *p* marking. The notation is dense with notes and accidentals.

Tr. p. *ff*

Tr. *p*

Cor. *ff*

Tuba. *ff*

Tb. *ff*

Tr. p. *mf cresc.*

Tr. *mf cresc.*

Cor. *tr^b*

Tuba. *tr^b*

Tb. *tr^b*

Tr. p. *ff*

Tr. *ff*

Cor. *ff*

Tuba. *ff*

Tb. *ff*

34 4" 35 3" 36 ca 1"

2
5"
37 38 1-2" 39 *con sord. C*

Tr. p.
Tr.
Cor.
Tuba.
Tb.

con sord. C
con sord. P

Tr. p.
Tr.
Cor.
Tuba.

con sord.

40

Tr. p.
Tr.
Cor.
Tuba.

via sord.
via sord.
ff
ff

41

42

Clar. *p dim.*

Tuba *p dim.*

Tb. *poco continuo*
mf

Clar. *ca. 3"*

Tuba *ca. 3"*
ppp
via sord.

III.

♩ = 60

1 *4"* *2* *2"* *1"* *1-2"* *3"*

Tra. *con sord. S*
ppp sempre

Tra. *con sord. S*

Clar. *con sord.*
ppp sempre

Tuba *con sord. S*
ppp sempre

Tb. *con sord.*
ppp sempre

Handwritten musical score for measures 3-7. The score is written for five staves: Tr. p. (Trumpet part), Tr. (Trumpet), Clar. (Clarinet), Tub. (Tuba), and Eb. (E-flat instrument). Measure numbers 3, 4, 5, 6, and 7 are written in red above the staves. Performance markings include "2-3\"", "2\"", "1\"", "3\"", and "3\"". The Tr. p. staff has a flat (b) in measure 4 and a sharp (sharp) in measure 7. The Clar. staff has a sharp (sharp) in measure 6 and a flat (flat) in measure 7. The Tub. staff has a sharp (sharp) in measure 5. The Eb. staff has a flat (flat) in measure 6.

Handwritten musical score for measures 8-12. The score is written for five staves: Tr. p., Tr., Clar., Tub., and Eb. Measure numbers 8, 9, 10, 11, and 12 are written in red above the staves. Performance markings include "1-2\"", "4\"", "ca 1\"", "4\"", and "ca 1\"". The Tr. p. staff has a sharp (sharp) in measure 11. The Eb. staff has a sharp (sharp) in measure 9 and measure 11.

Handwritten musical score for measures 13-16. The score is written for five staves: Tr. p., Tr., Clar., Tub., and Eb. Measure numbers 13, 14, 15, and 16 are written in red above the staves. Performance markings include "2-3\"", "ca 1\"", "1-2\"", and "ca 3\"". The Tr. p. staff has a sharp (sharp) in measure 13 and a double sharp (double sharp) in measure 15. The Tr. staff has a sharp (sharp) in measure 13 and a flat (flat) in measure 16. The Clar. staff has a sharp (sharp) in measure 13 and a flat (flat) in measure 16. The Tub. staff has a sharp (sharp) in measure 13 and a sharp (sharp) in measure 16. The Eb. staff has a sharp (sharp) in measure 13 and a double sharp (double sharp) in measure 16. The word "pp sempre" is written in the Tr., Clar., Tub., and Eb. staves in measure 16. The word "ca 3\"" is written in the Tr. staff in measure 16.

17 *ca 2"* 18 *2-3"*

Tr. p. *ff*

Tr.

Clar.

Tuba.

Tb.

ff *pp*

ff *pp*

ff *pp*

ff *pp*

ff *pp*

ff *pp*

19 *4"* 20 21

Tr. p. *pp* *via sord.*

Tr. *via sord.*

Clar. *via sord.*

Tuba. *via sord.* *ff*

Tb. *via sord.*

22 *1-2"* 23 *3"* 24 *2-3"*

Tr. p. *ff*

Tr.

Clar.

Tuba.

Tb.

25 *con sord. C* 2-3" 26 3-4"

mf *ff* *pp* *pp*

via sord.

27 28 29 3"

resc. *ff* *ff*

2" *3"*

30 31 32 33 2"

2-3" *ca 1"* *4-5"*

con sord. S *con sord. S* *con sord. P* *con sord.*

ff *fff* *fff* *fff*

Handwritten musical score for measures 34-37. The score includes staves for Tr. p., Tr., Cor., Tuba, and Eb. Measure numbers 34, 35, 36, and 37 are written in red. Above the staves, durations are indicated: "2-3\"", "5\"", "2\"", and "6\"".

Measure 34: Tr. p. has a note with a "+" above it and "pp" below it. Cor. has a note with a "+" above it and "pp" below it. Tuba and Eb have notes with "pp" below them.

Measure 35: Tr. p. has a note with a "+" above it and "pp" below it. Tr. has a note with a "+" above it and "pp" below it. Tuba has a note with a "+" above it and "pp" below it. Eb has a note with "pp" below it.

Measure 36: Tr. p. has a note with a "+" above it and "pp" below it. Tr. has a note with a "+" above it and "pp" below it. Tuba has a note with a "+" above it and "pp" below it. Eb has a note with "pp" below it.

Measure 37: Tr. p. has a note with a "+" above it and "pp" below it. Tr. has a note with a "+" above it and "pp" below it. Tuba has a note with a "+" above it and "pp" below it. Eb has a note with "pp" below it.

Handwritten musical score for measures 38-42. The score includes staves for Tr., Cor., Tuba, and Eb. Measure numbers 38, 39, 40, 41, and 42 are written in red. Above the staves, durations are indicated: "2-3\"", "3\"", "ca 2\"", "2-3\"", and "ca 4\"".

Measure 38: Tr. has a note with "dim." above it. Cor. has a note with "dim." above it. Tuba has a note with "dim." above it. Eb has a note with "dim." above it.

Measure 39: Tr. has a note with "dim." above it. Cor. has a note with "dim." above it. Tuba has a note with "dim." above it. Eb has a note with "dim." above it.

Measure 40: Tr. has a note with "dim." above it. Cor. has a note with "dim." above it. Tuba has a note with "dim." above it. Eb has a note with "dim." above it.

Measure 41: Tr. has a note with "dim." above it. Cor. has a note with "dim." above it. Tuba has a note with "dim." above it. Eb has a note with "dim." above it.

Measure 42: Tr. has a note with "dim." above it. Cor. has a note with "dim." above it. Tuba has a note with "dim." above it. Eb has a note with "dim." above it.

