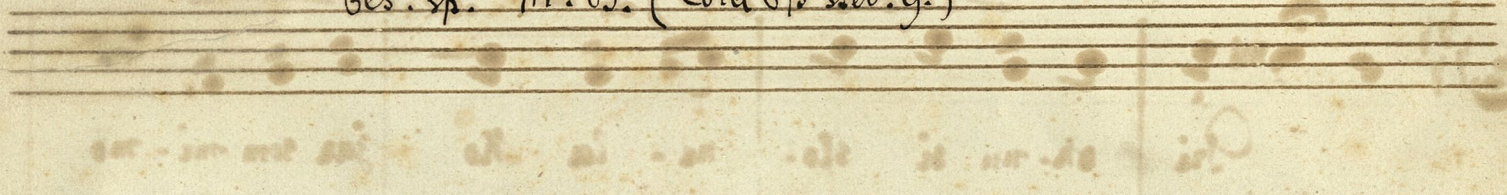


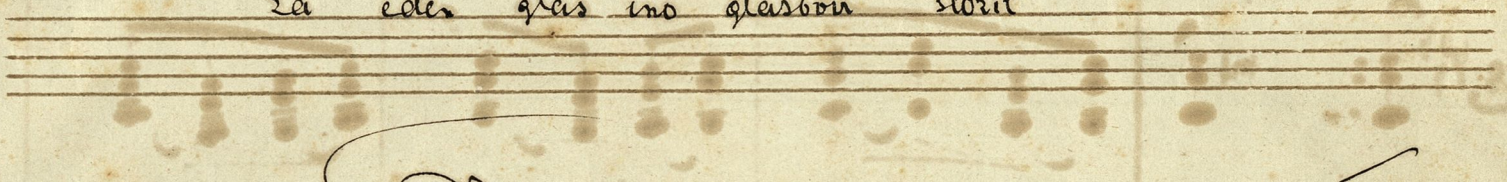


Pod oknom

bes. sp. M. B. (Zora 875 slov. 9.)

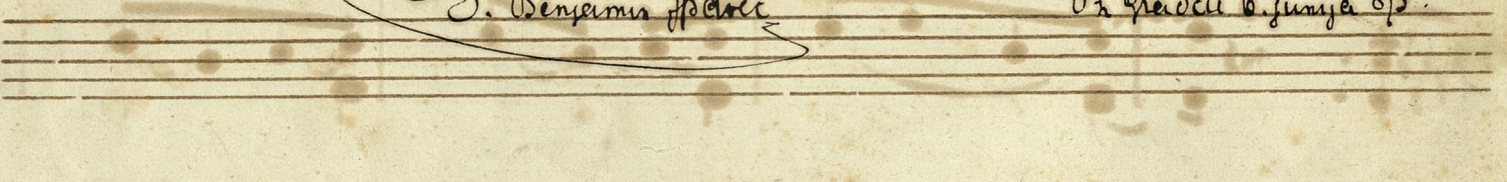


za eden glas ino glasovno slozil

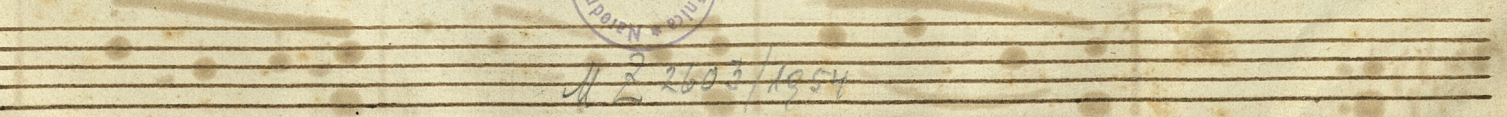


J. Benjamin pavec

in predcu 6. junija 875.



U 2 2603/1954



Gleis.

Glasovir

Pri ok-nu si slo- ne- la ko jar sem mi- mo
 sel; Pre- kras- no si za- pe- la In slu- sal jar ve.

cresc.

sel. O. ca-ran sem te gle-dal, Si gle-da-la na

cres - cen -

me Do. glee mi troj po. ve - dal, Da misliš oj! na

do

ritard. *A tempo*

me Da mis - liš oj! na mi Lju - bo se nas meh.

ritard. *A tempo*

ritard.

la - la Nas - meh - nil se i jer ; Del ta - krat bo's o.

The first system of the handwritten musical score consists of a vocal line and a piano accompaniment. The vocal line is written on a single staff with a treble clef and a key signature of two flats (B-flat and E-flat). The lyrics are "la - la Nas - meh - nil se i jer ; Del ta - krat bo's o." The piano accompaniment is written on two staves (treble and bass clefs) and features a complex texture with many beamed notes and slurs. A large, sweeping slur covers the first two measures of the piano part.

sta - la mi vr - cu vsa - hi cas.

ritardando.
ritardando.

The second system continues the musical score. The vocal line has the lyrics "sta - la mi vr - cu vsa - hi cas." The piano accompaniment includes performance markings: "ritardando." is written above the right-hand piano staff in the third measure, and "ritardando." is written below the left-hand piano staff in the fourth measure. The piano part continues with intricate textures and slurs.

The third system of the handwritten musical score shows a vocal line and a piano accompaniment. The vocal line begins with a rest in the first measure, followed by a few notes. The piano accompaniment starts with a rest in the first measure and then continues with notes. A blue circular stamp is visible in the center of the page, partially overlapping the piano staff.

