



[Faint, mostly illegible handwritten text in a medieval script, possibly Latin or Gothic, covering the left half of the page. The text is heavily faded and obscured by large brown stains.]

[Faint, mostly illegible handwritten text in a medieval script, possibly Latin or Gothic, covering the right half of the page. The text is heavily faded and obscured by large brown stains.]

Inches

Centimetres

Blue

1

2

3

4

5

6

7

8

9

10

11

12

13

14

15

16

17

18

19

20

KODAK Color Control Patches

©Eastman Kodak Company, 1995



Black

3/Color

White

Magenta

Red

Yellow

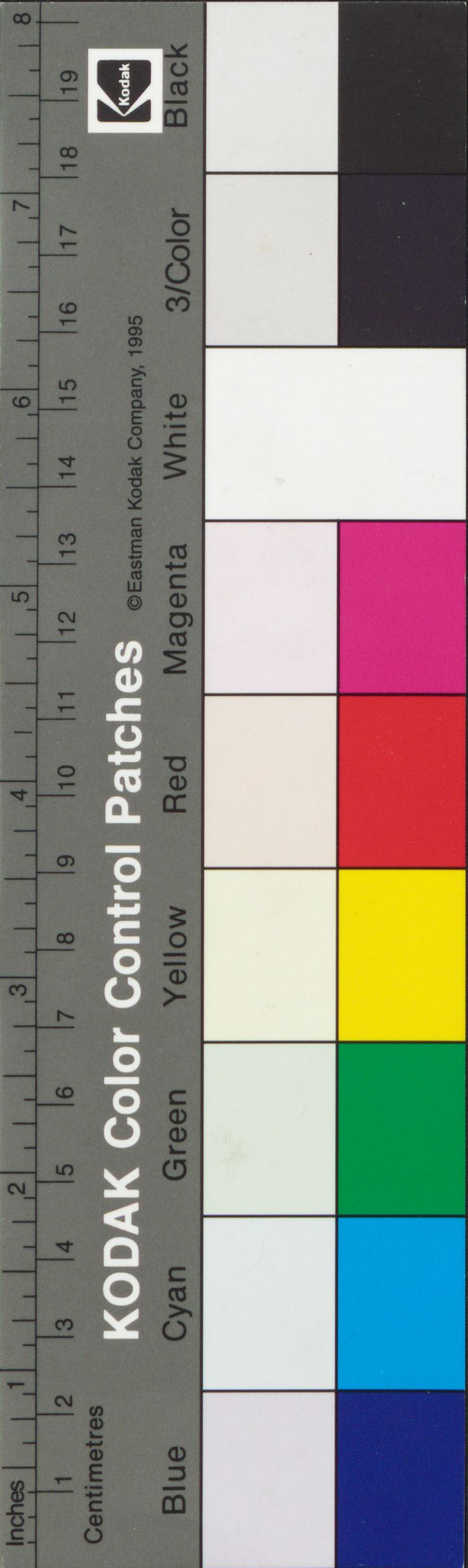
Green

Cyan

Handwritten text in a medieval script, likely Latin, with some words in red ink. The text is mostly obscured by large holes and stains on the left side of the page.

Handwritten text in a medieval script, likely Latin, covering the right side of the page. It appears to be a continuation of the text on the left, though less legible due to the same damage and fading.

Handwritten text in a larger, stylized Gothic script at the bottom right of the page.



[Faint, mostly illegible handwritten text in a medieval script, possibly Latin or Old French, covering the left page of the manuscript.]

[Faint, mostly illegible handwritten text in a medieval script, covering the right page of the manuscript. Some words are more legible than others.]

[Small handwritten note or signature in the middle of the right page.]

[Small handwritten note or signature below the middle note.]

[Small handwritten note or signature below the previous note.]

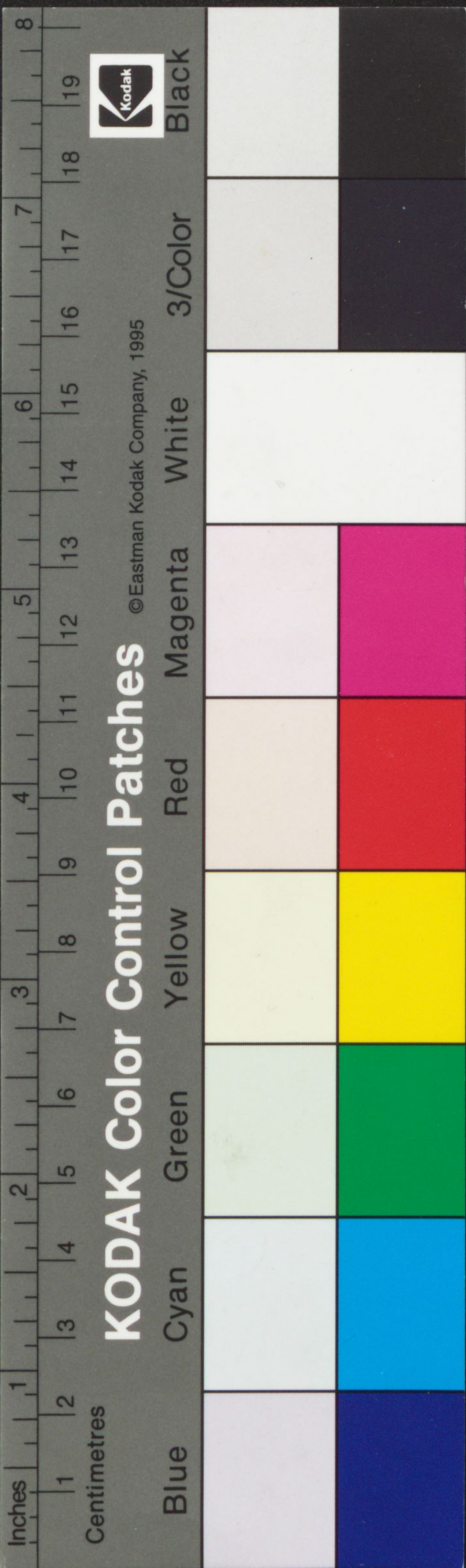
[Small handwritten note or signature below the previous note.]

[Small handwritten note or signature below the previous note.]

[Large block of handwritten text in a medieval script, likely a legal or administrative document, covering the right page of the manuscript. The text is dense and difficult to read due to fading and damage.]

[Faint handwritten text at the bottom of the right page, possibly a signature or a date.]





Handwritten Latin text on the left page, starting with 'ras de ill' and containing several lines of dense script.

Notitia

per de loquente

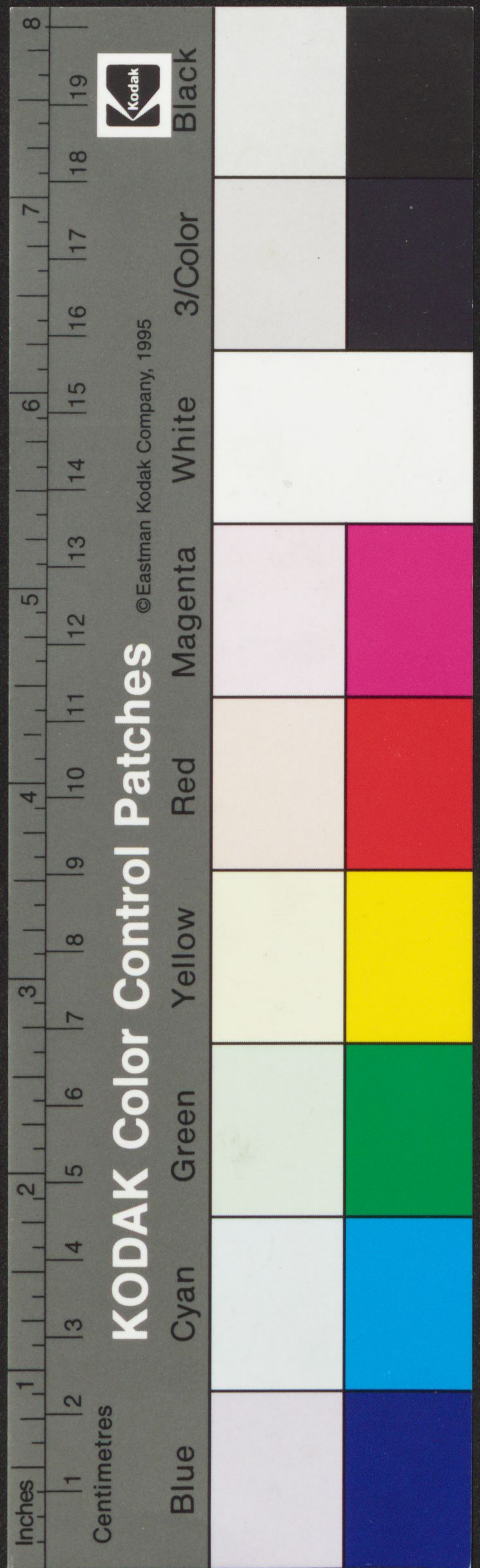
per quendam... ad...

colla...

Handwritten text in a smaller script, possibly a marginal note or a specific heading.

Handwritten Latin text on the right page, starting with 'ff de acti possi...' and containing several paragraphs of dense script. A prominent heading 'OVBVSVQ' is visible at the top of the main text block.

Handwritten note in a smaller script on the right margin, starting with 'An epus ut alt...'.

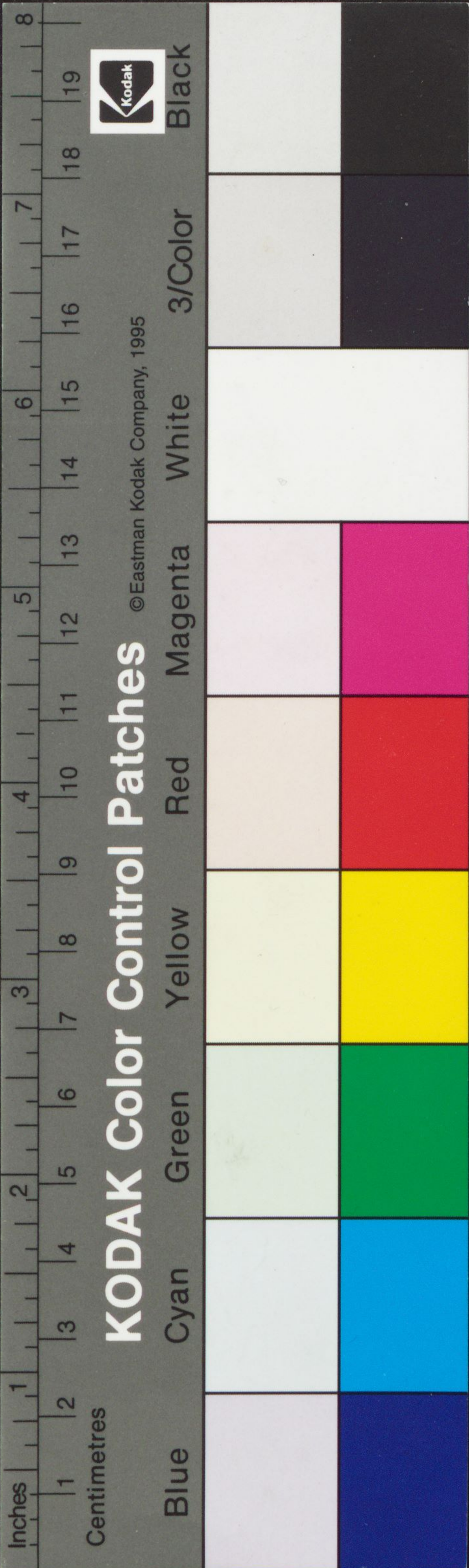


©Eastman Kodak Company, 1995

[Faint handwritten text, likely bleed-through from the reverse side of the page]

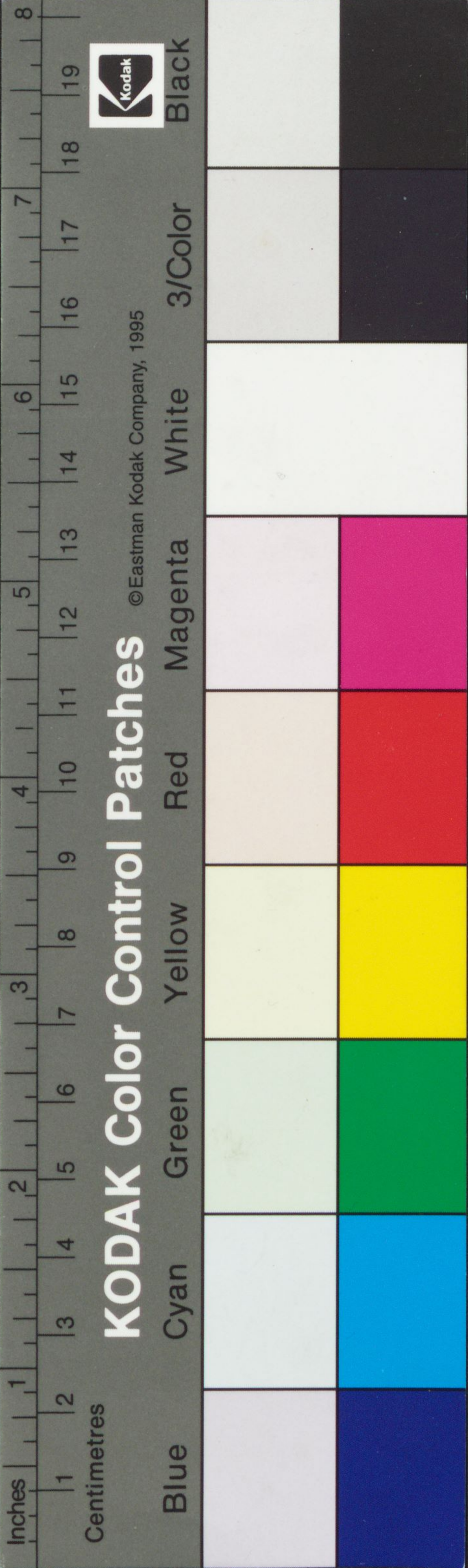
AVT

[Main body of handwritten text in a medieval script, possibly Latin or Old English]



[Faint, handwritten text in a historical script, likely Latin or Greek, covering the majority of the page. The text is mostly illegible due to fading and damage.]

[Faint, handwritten text on the right edge of the page, partially obscured by damage.]

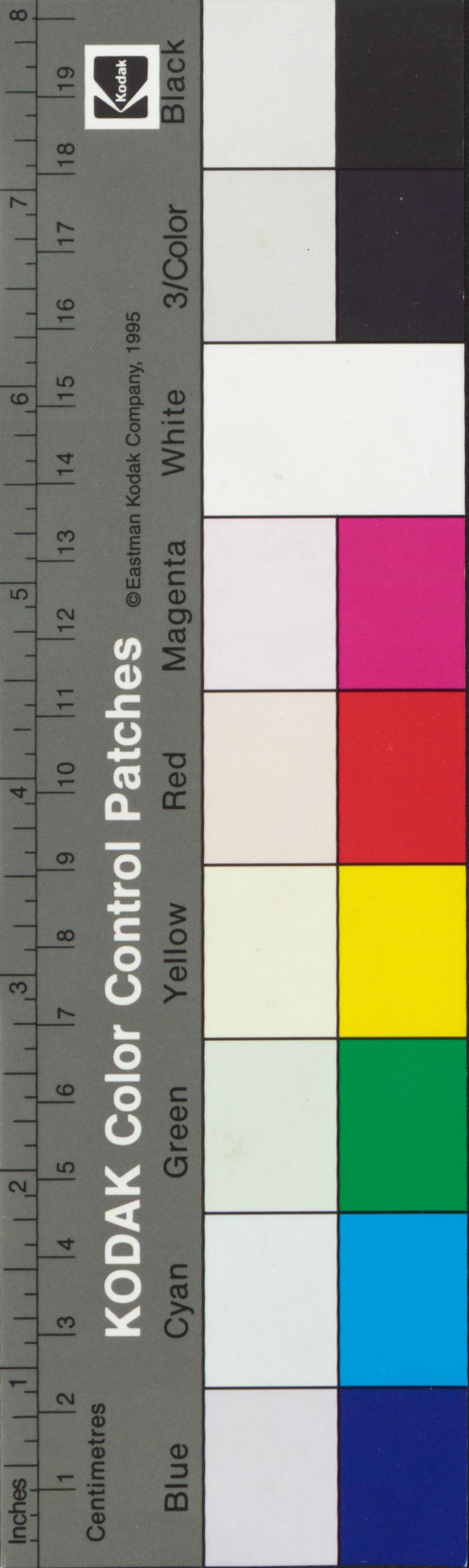


KODAK Color Control Patches ©Eastman Kodak Company, 1995

[Faint, handwritten Latin text in a medieval script, likely a manuscript page. The text is partially obscured by dark spots and bleed-through from the reverse side of the page.]



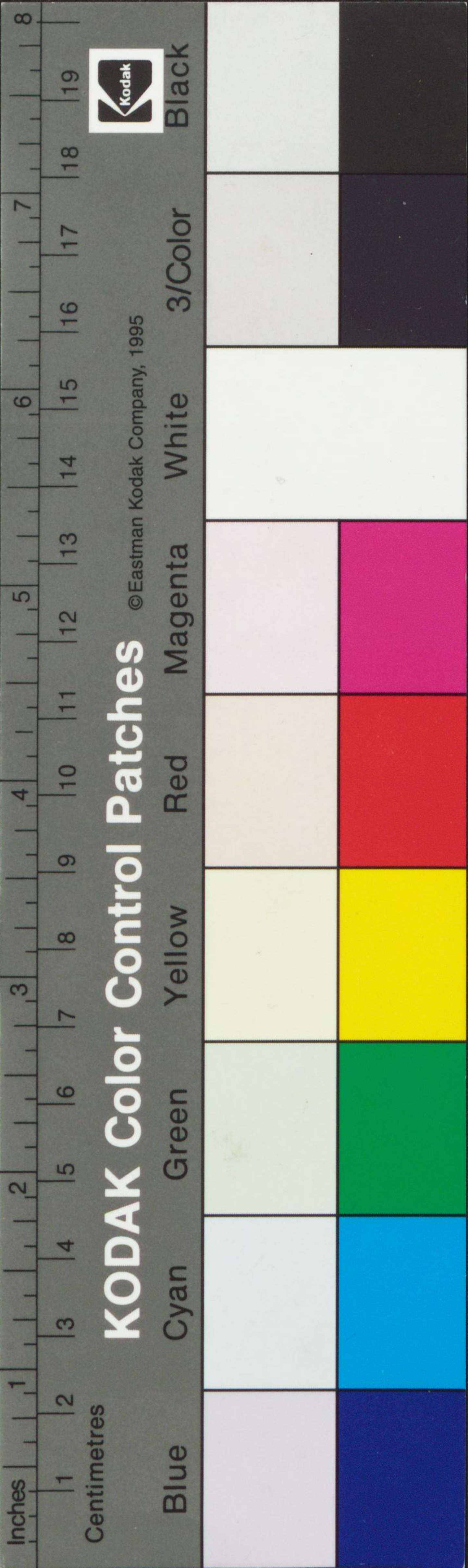
[Faded, mostly illegible Latin text from an ancient manuscript, showing signs of significant water damage and staining.]



©Eastman Kodak Company, 1995

KODAK Color Control Patches

[Faint, mostly illegible Latin text from an old manuscript, showing signs of age and damage.]



Fragment of a Latin manuscript page, heavily stained and discolored. The text is written in a medieval Gothic script. The left edge is irregular and shows signs of damage. The right edge is also irregular and shows signs of damage. There are several circular holes along the top edge, likely from a binding. The text is arranged in two columns, with the right column being more legible than the left. The text includes words like "Septuaginta" and "Emnes".

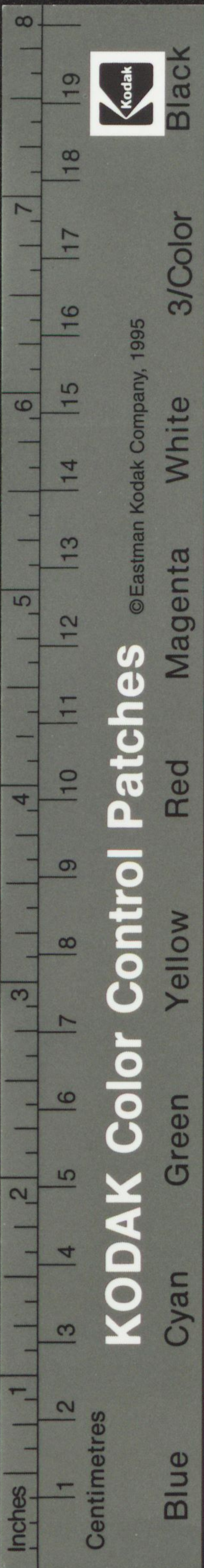


[Faint, mostly illegible handwritten text in a medieval script, likely Latin or Gothic. The text is written in dark ink on aged, yellowish parchment. There are several large holes and stains on the page, particularly on the right side.]

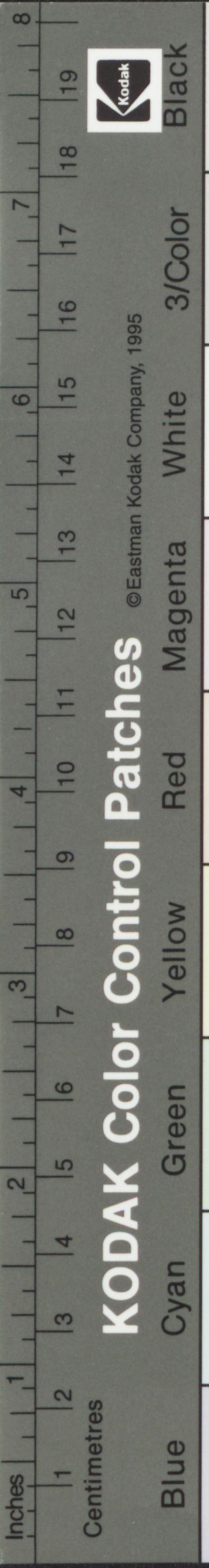
WIKIP

[The word 'WIKIP' is written in a large, bold, black Gothic script, serving as a prominent section header or initial. It is located in the upper middle section of the right page.]

[The text continues below the header, consisting of several lines of dense, handwritten script. The ink is dark, and the parchment shows signs of wear and discoloration.]



[Faint, handwritten text in a medieval script, likely Latin or Gothic, covering the right side of the image. The text is mostly illegible due to fading and damage to the parchment.]



[Faint, handwritten text in a historical script, likely Latin or Gothic, covering the right side of the image. The text is mostly illegible due to fading and damage to the parchment.]