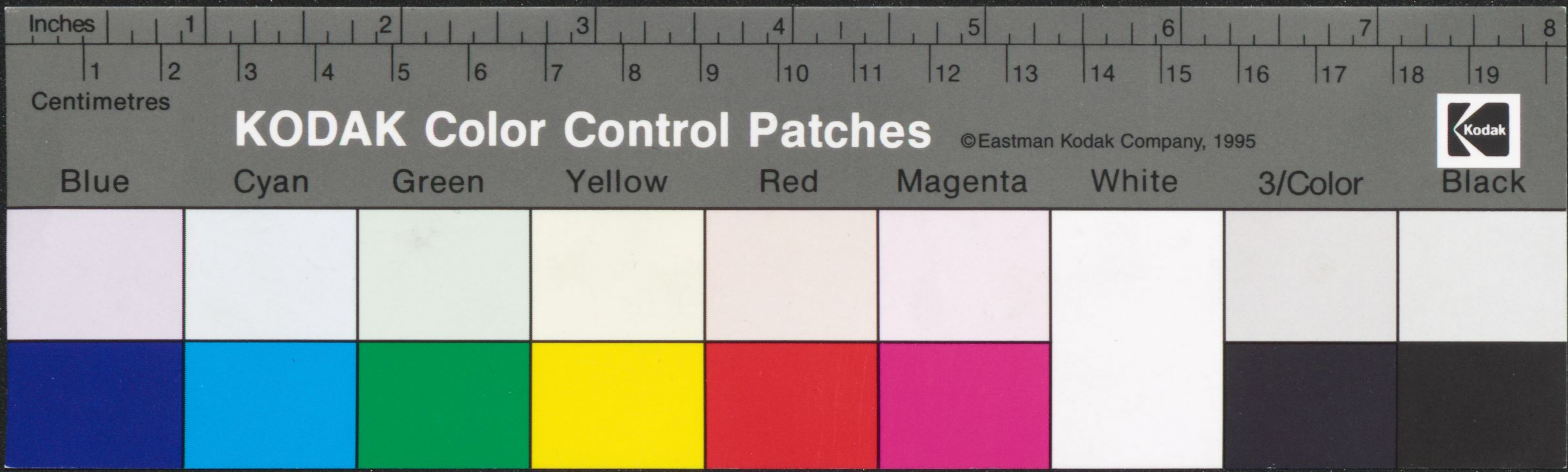


Handwritten text in a medieval script, likely Latin or a related language. The text is arranged in two columns on the left page. Several lines are written in red ink, serving as section markers or initials. The script is dense and characteristic of the Carolingian or similar medieval bookhands.

Handwritten text in a medieval script, likely Latin or a related language. The text is arranged in two columns on the right page. Several lines are written in red ink, serving as section markers or initials. The script is dense and characteristic of the Carolingian or similar medieval bookhands.





Handwritten text in a medieval script, likely Latin or a related language. The text is arranged in two columns on the left page. Several lines are written in red ink, serving as rubrics or headings. A large, ornate initial letter 'M' is visible at the beginning of a section. The parchment shows signs of age, including staining and wear.

Handwritten text in a medieval script, likely Latin or a related language. The text is arranged in two columns on the right page. Several lines are written in red ink, serving as rubrics or headings. A large, ornate initial letter 'M' is visible at the beginning of a section. The parchment shows signs of age, including staining and wear.

*Handwritten note in blue ink at the bottom of the page, possibly a library or collection mark.*