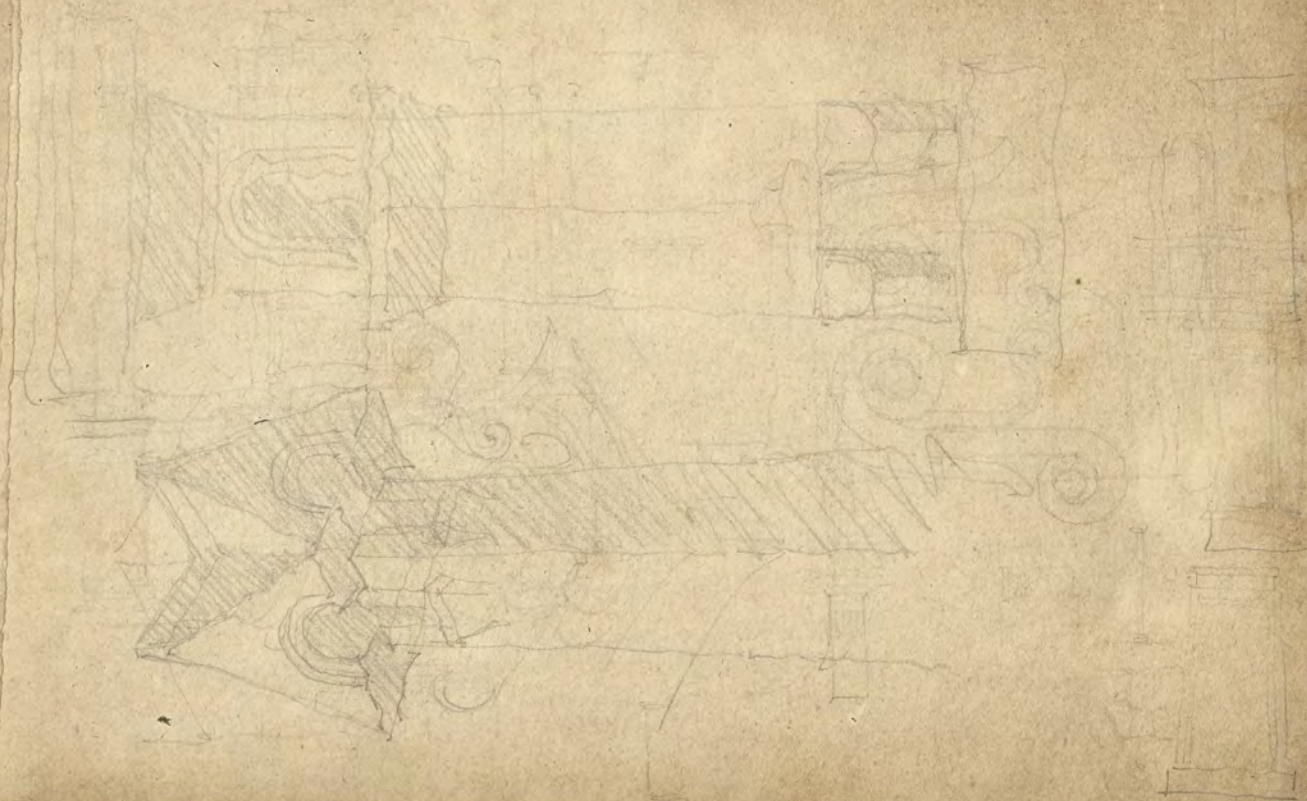
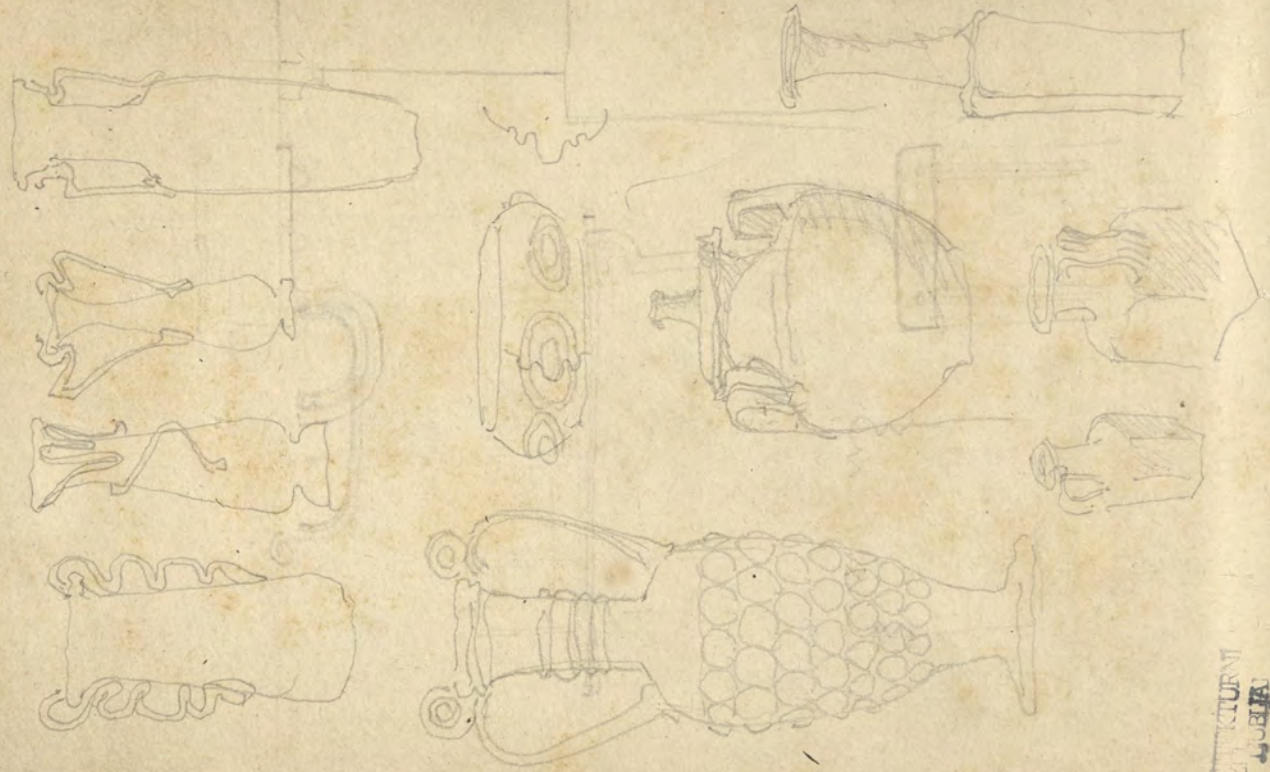


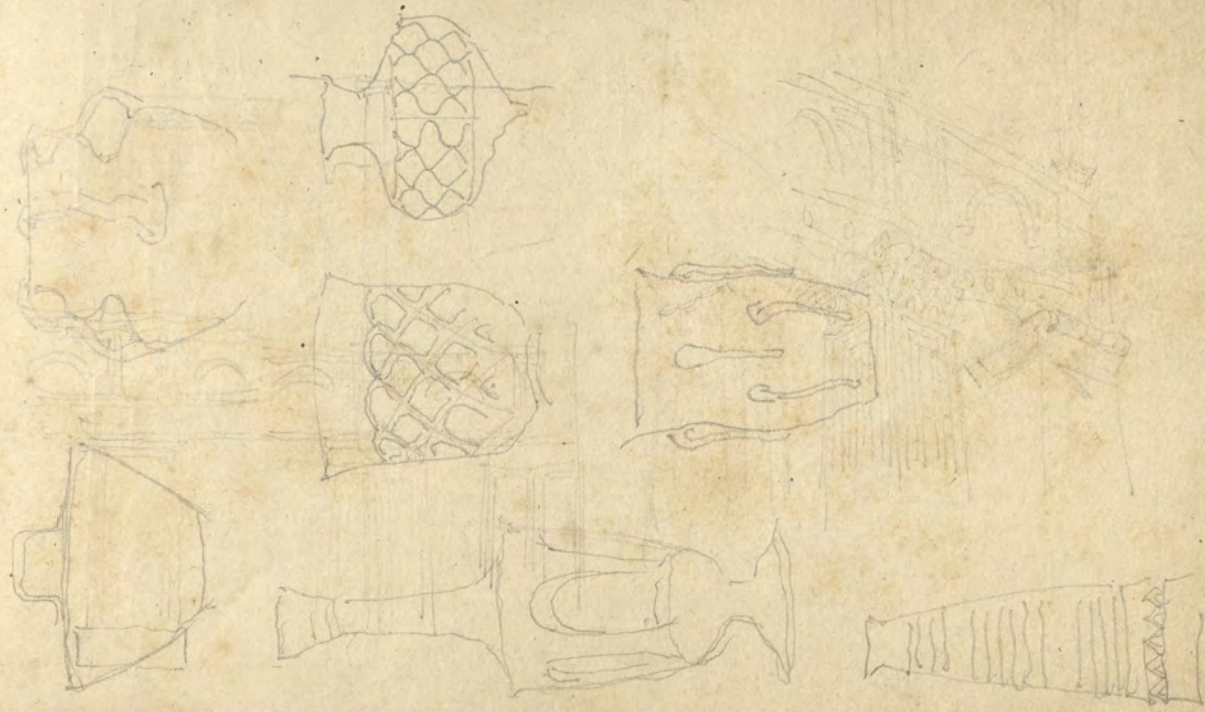
ARHITEKTURNI
MUZEJ
LJUBLJANA

inv. št. 1103
A - 15





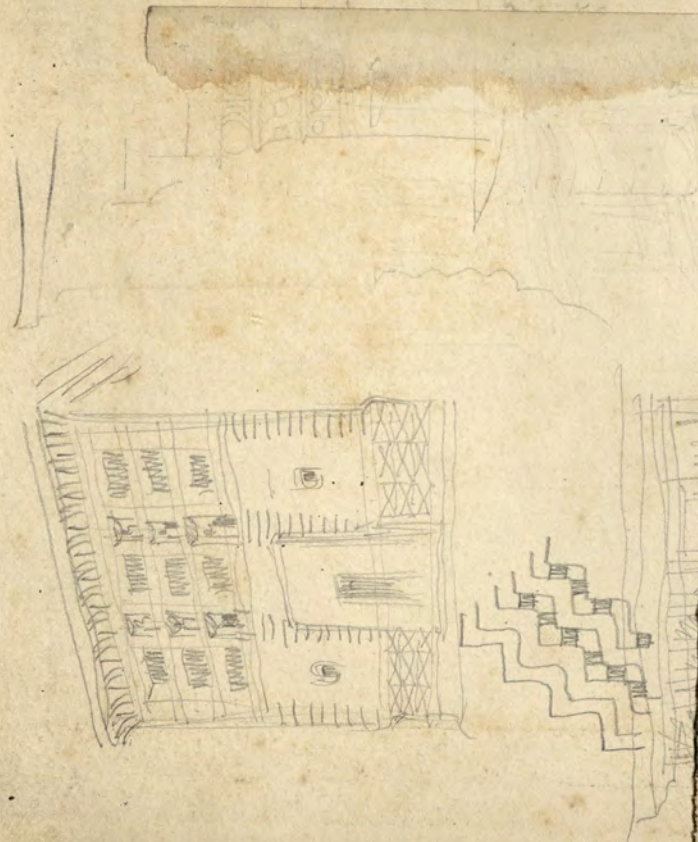
MUSEUM
MUSEUM



MUSEUM
MUSEUM



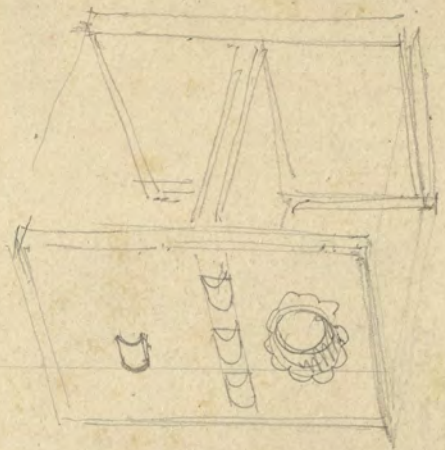
ARHIVNI
MUZEJ
LJUBLJANA



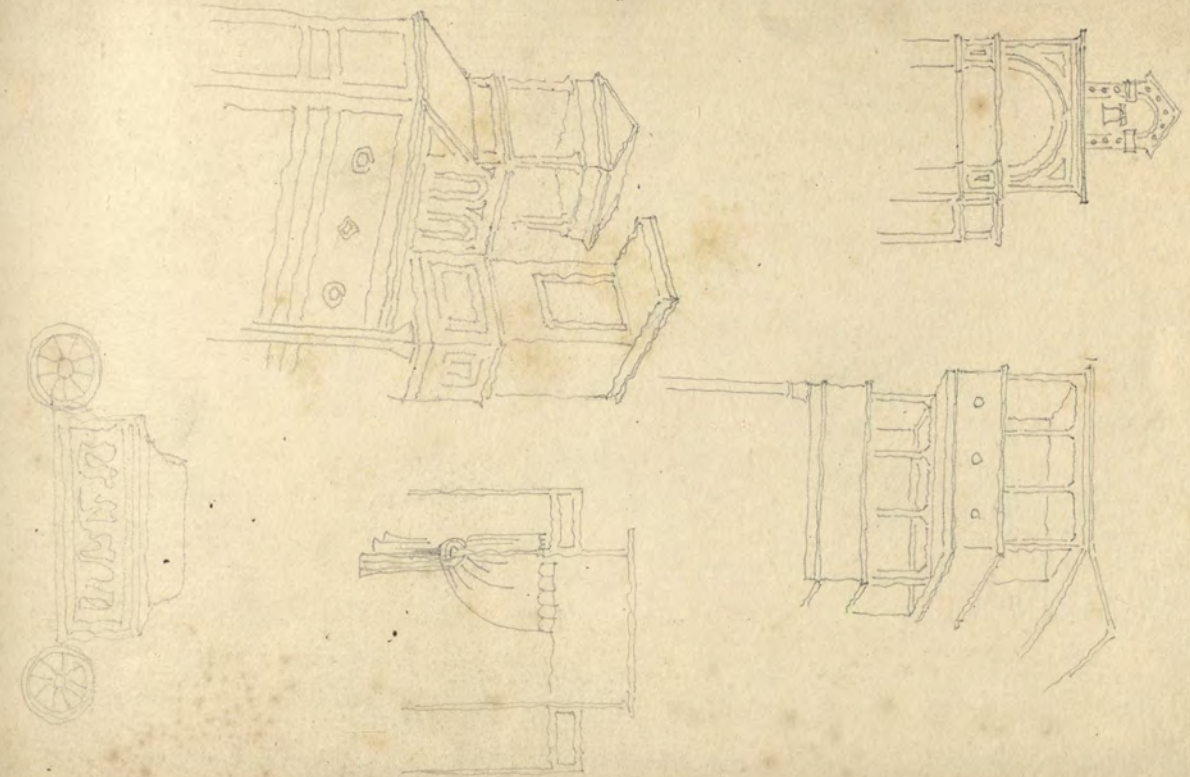
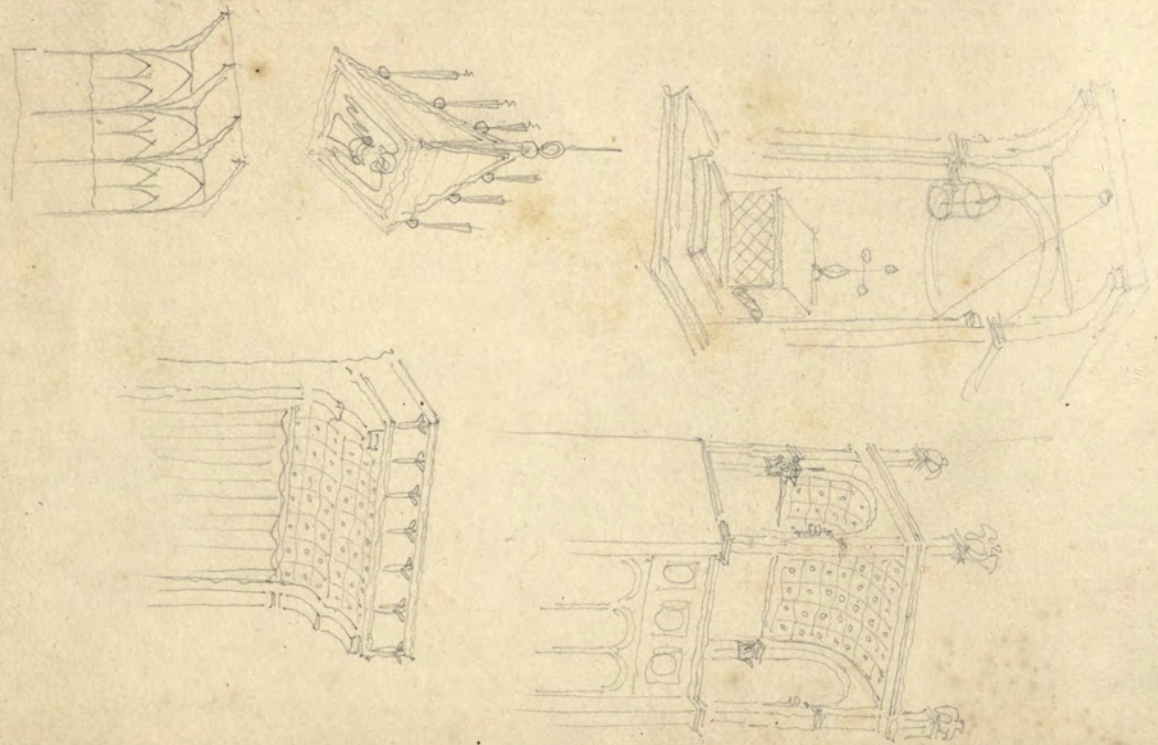
nturm
Minari, Phot.

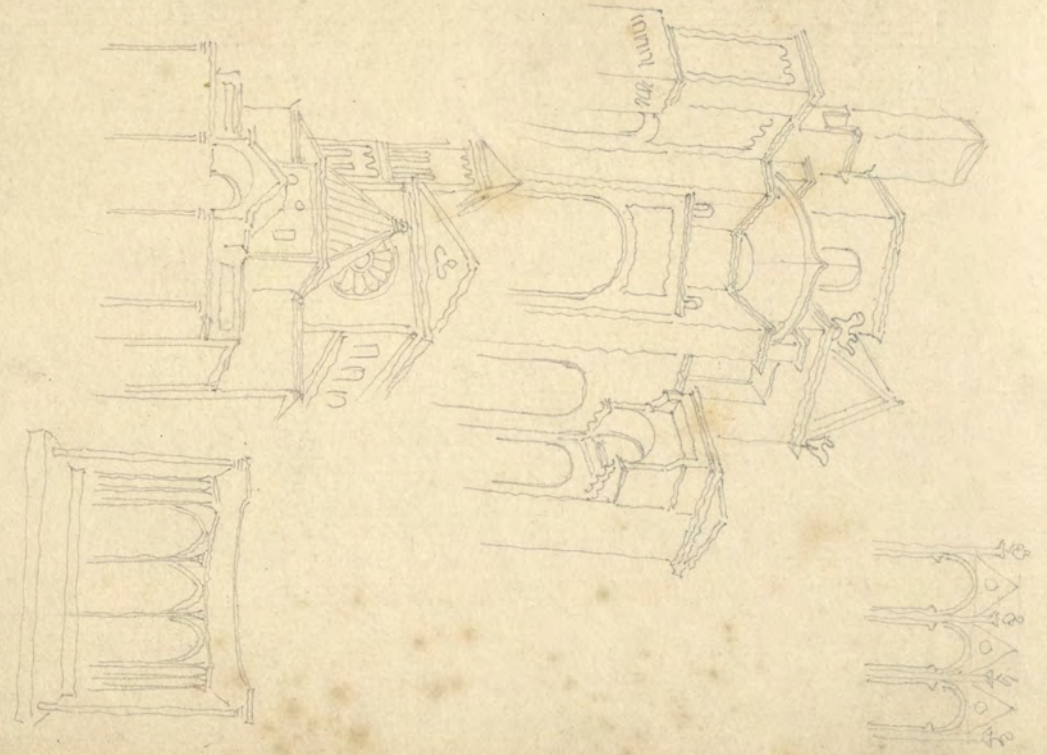


Der Löwe auf dem Burgplatz
in Braunschweig
Nach einer Photographie

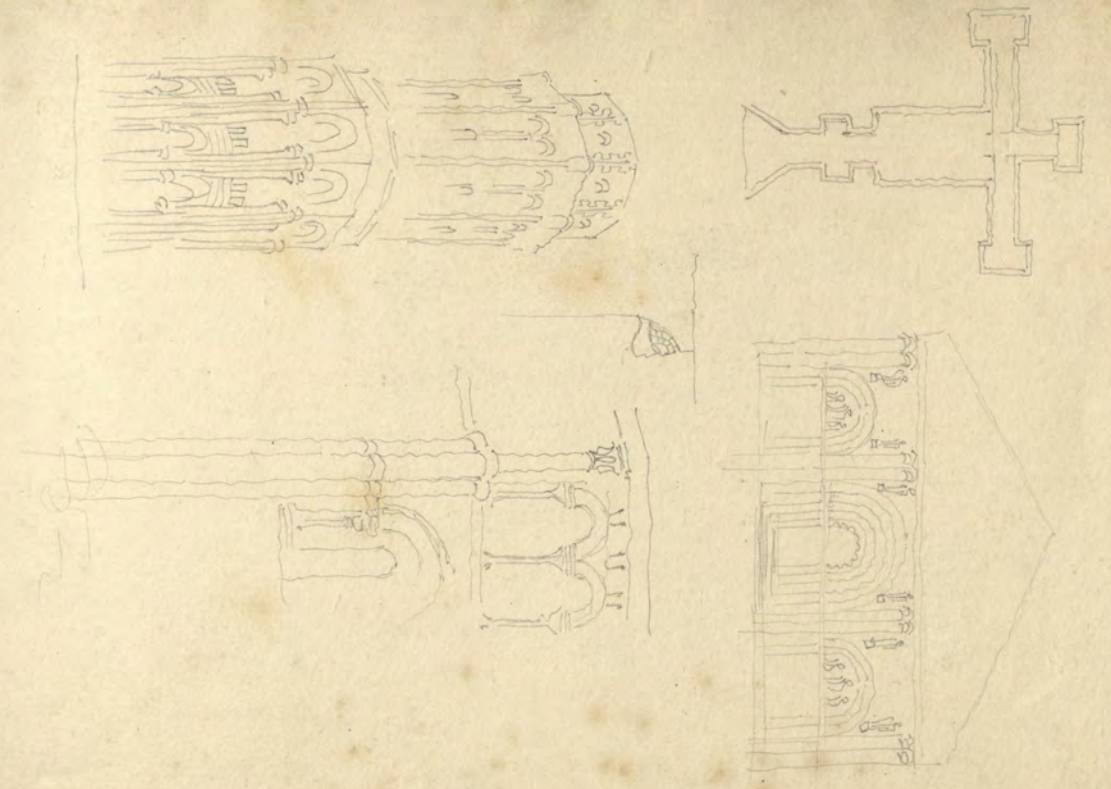


ARCHITEKTUR
MUSEUM
MÜNCHEN

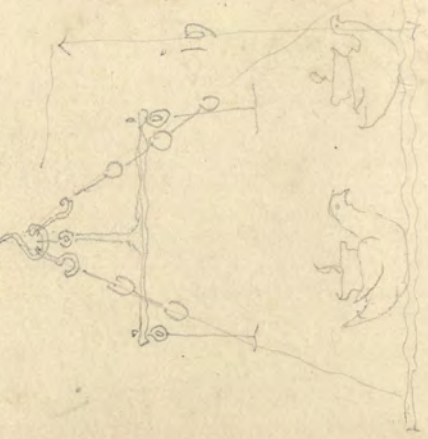
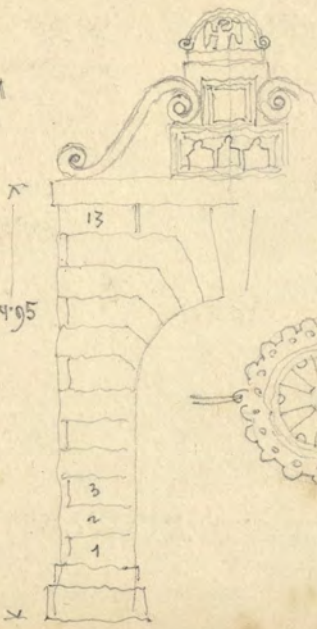
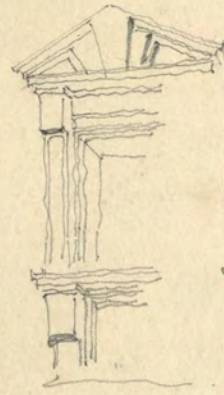




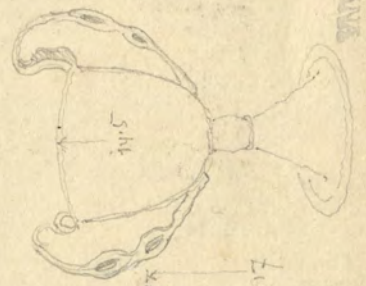
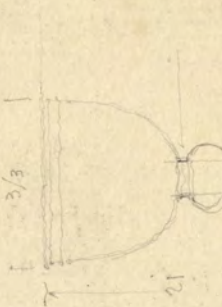
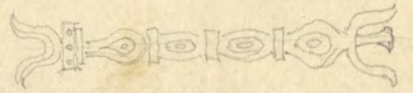
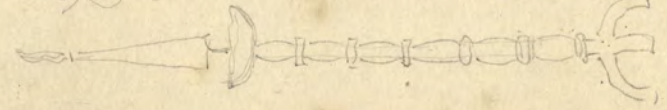
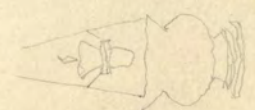
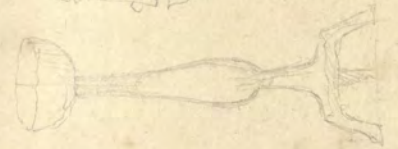
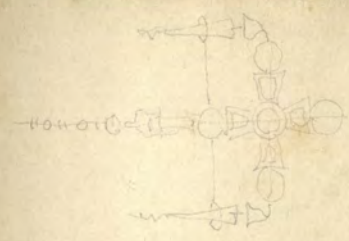
ARHITEKTURNI
MOZEL
LJUBLJANA



ARHITEKTURNI
MOZEL
LJUBLJANA



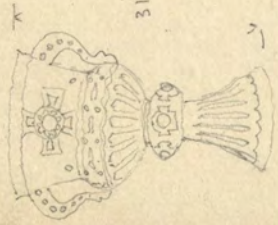
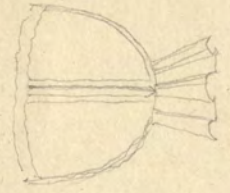
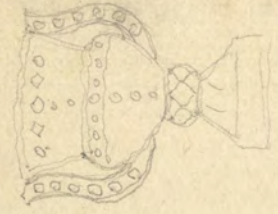
ARHITEKTURNA
MUZEJA
LJUBLJANA



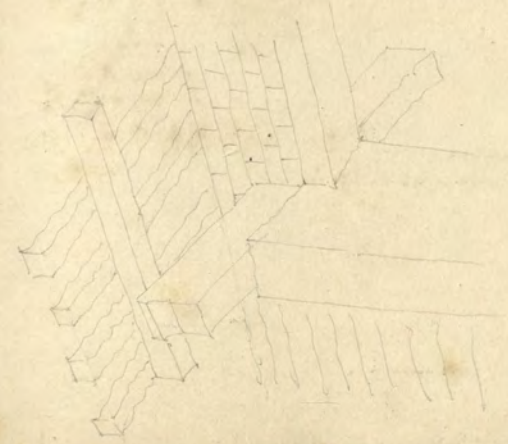
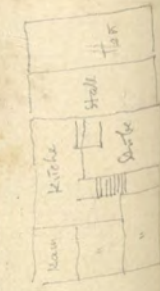
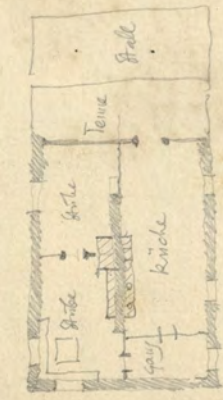
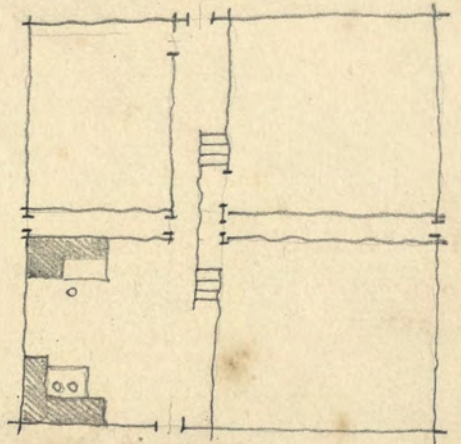
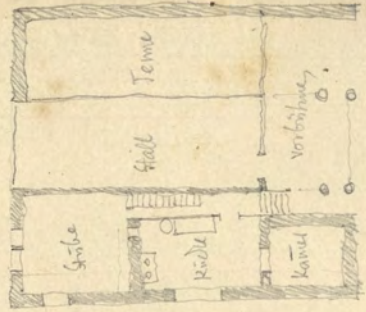
Cristal de Poche

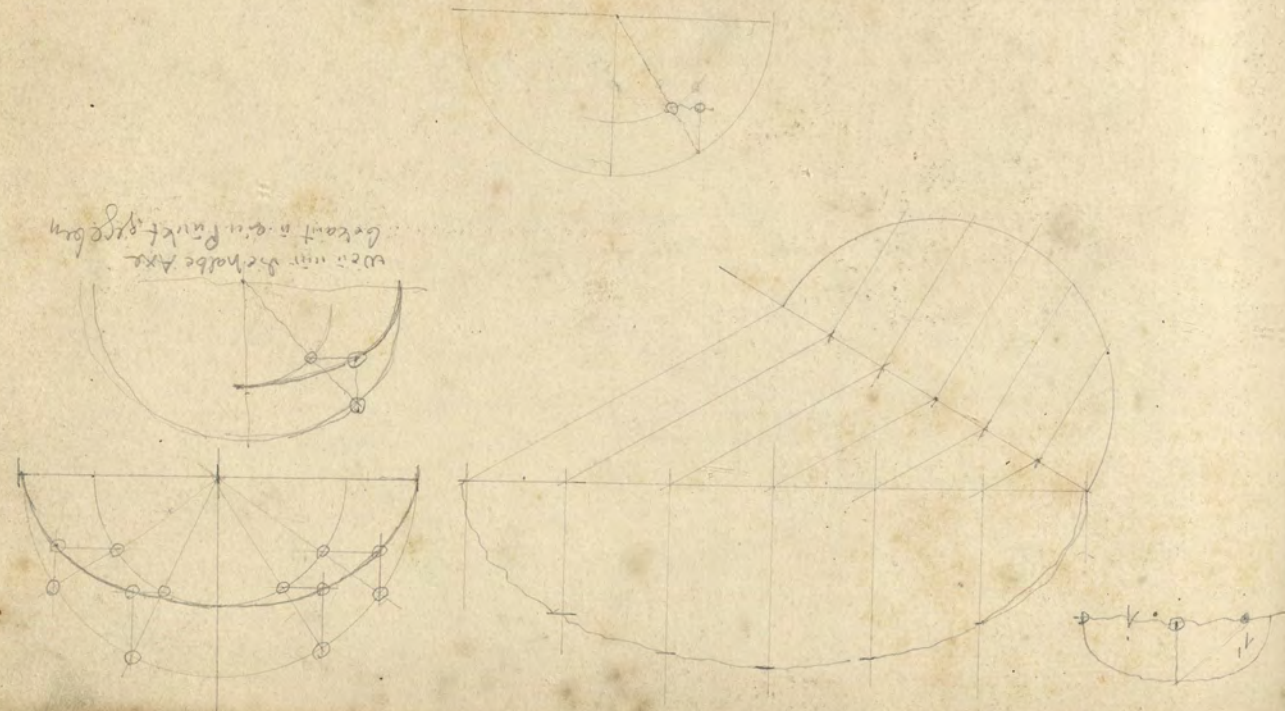


ARHITEKTURNA
MUZEJA
LJUBLJANA



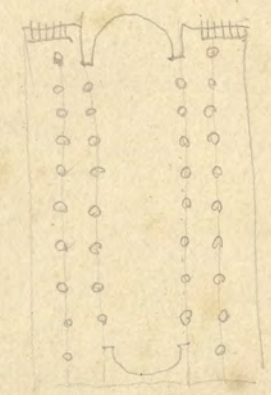
31



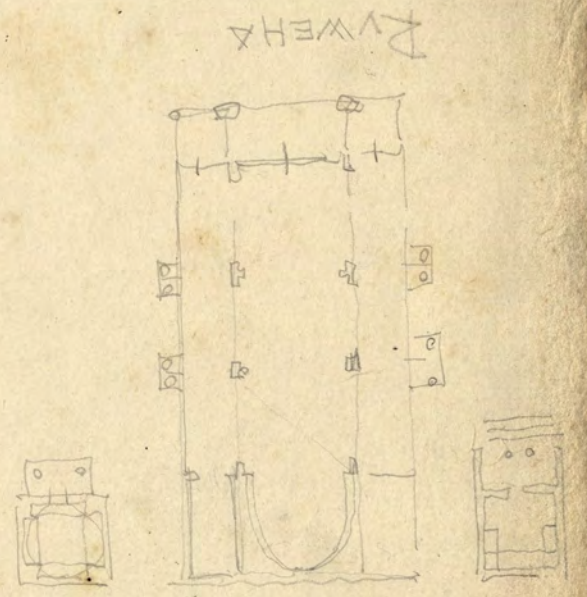


Wenn man die halbe Axt
 Gerat in ein Punkt geben

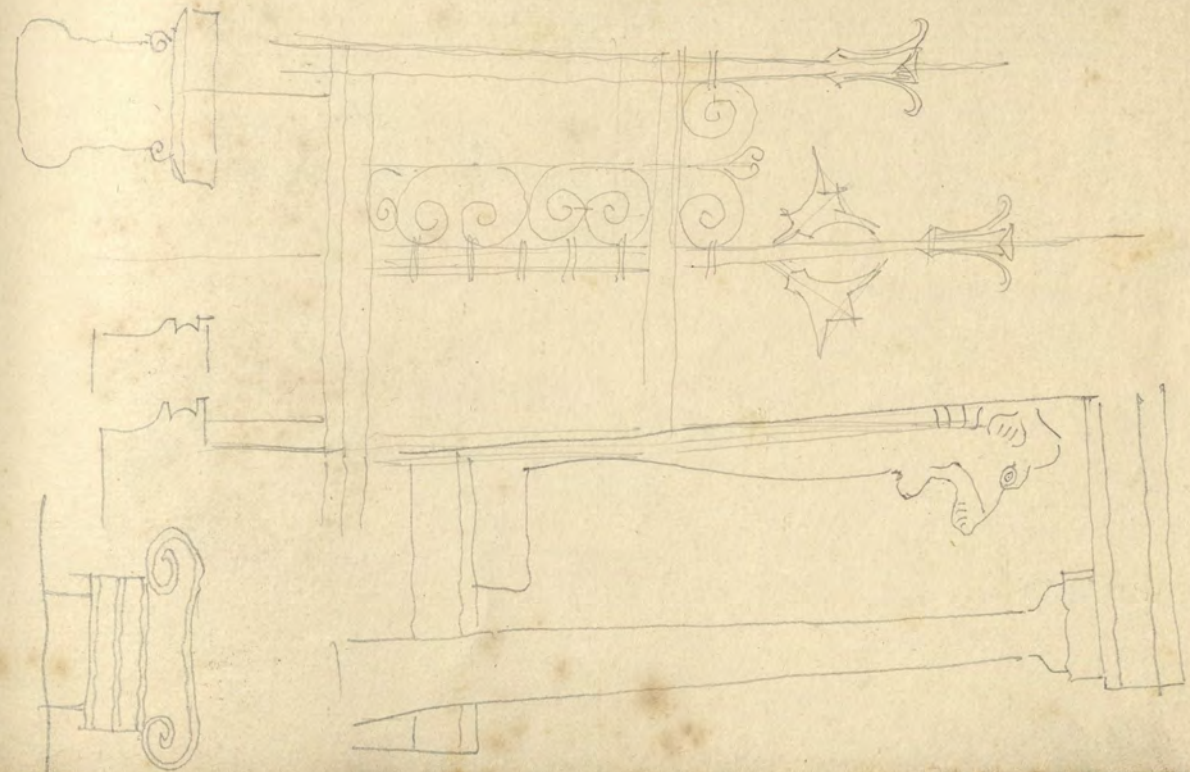
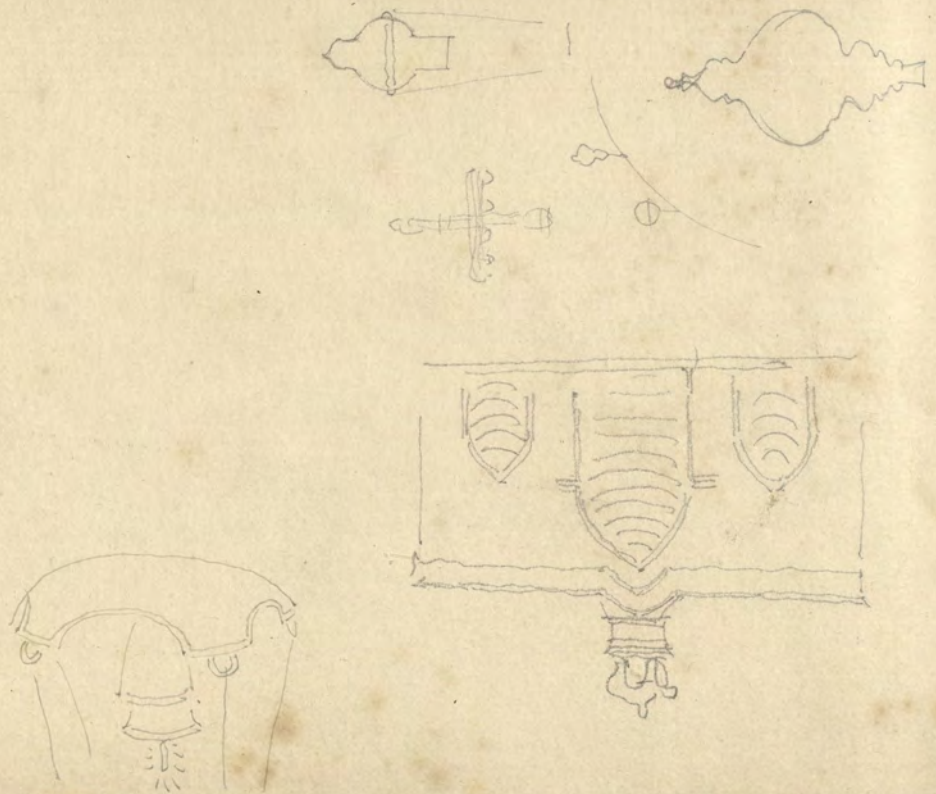
ARHITEKTUR
 LURJANA



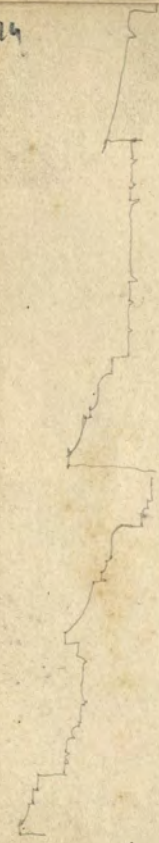
Orleansville



M
1

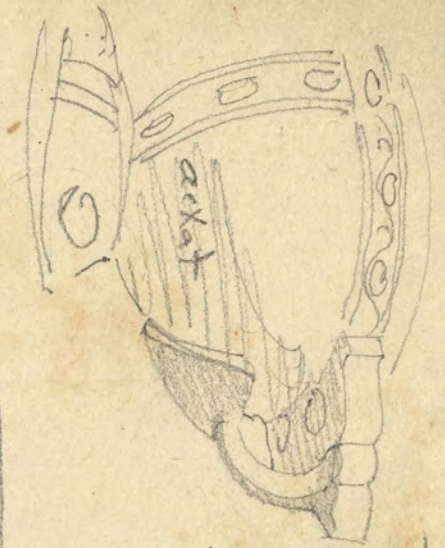
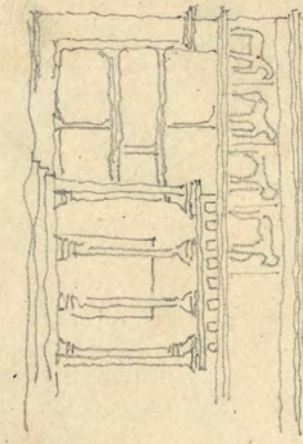
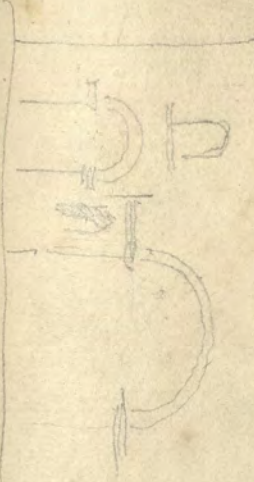


ARHITEKTURAN
MUZEI
GULISTAN



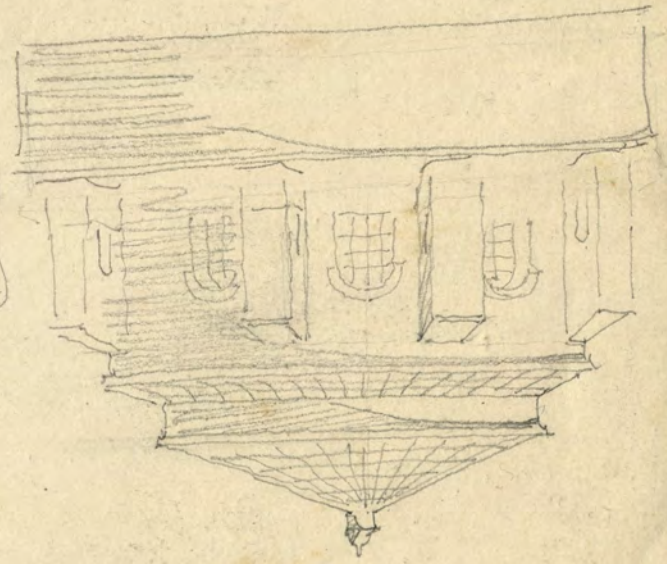
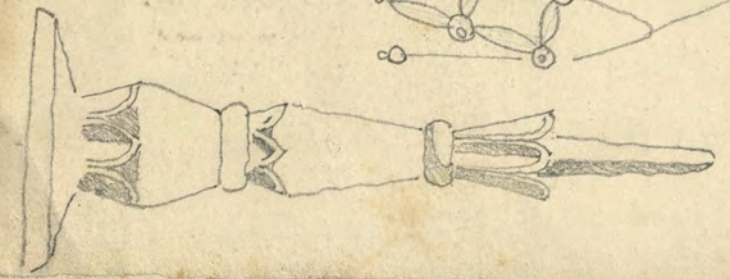
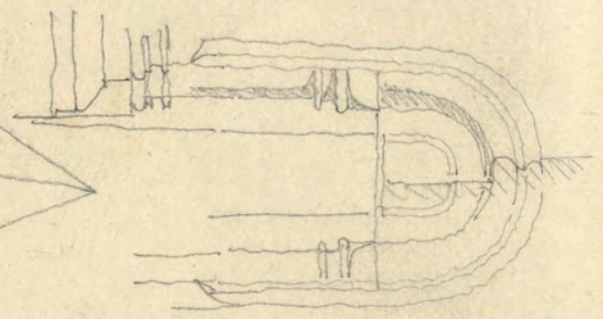
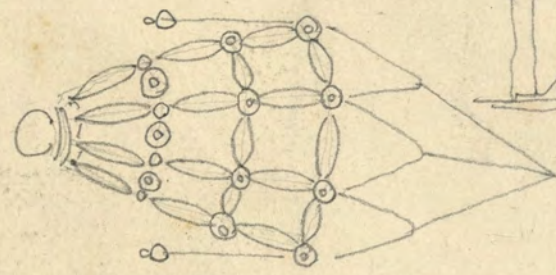
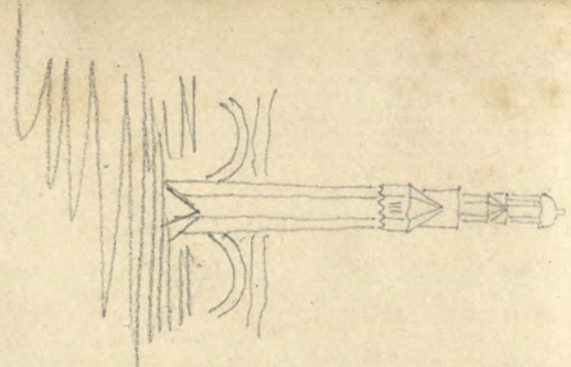
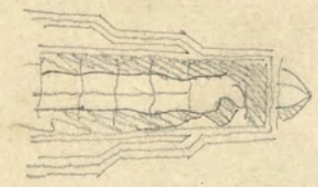
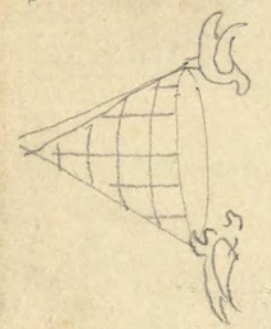
6 8 4 9 5 4 6 2 1

Arc de l'Esc. Homo



94 Ans.
+ 11 7

ARHITEKTURAN
MUZEI
GULISTAN

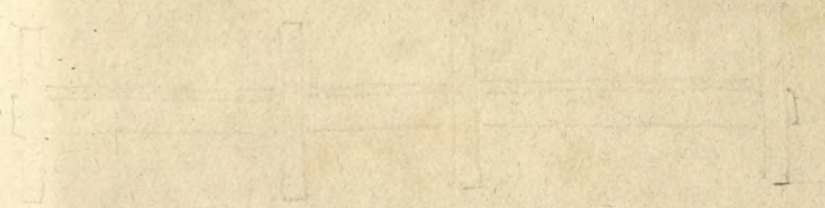




ARQUITECTURA
MUSEO
FOLIO



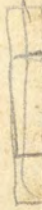
ARHITEKTURNI MUZEJ LJUBLJANA



ARHITEKTURNI MUZEJ LJUBLJANA

32

ARHITEKTURNI
MUZEJ
LJUBLJANA



ARHITEKTURNI
MUZEJ
LJUBLJANA

A - 15

