



## 21 GOSTINSTVO IN TURIZEM HOTELS AND RESTAURANTS, TOURISM

št./No 19

### INDEKSI PRIHODKA V GOSTINSTVU, SLOVENIJA, APRIL 2004

INDICES OF TURNOVER IN HOTELS AND RESTAURANTS, SLOVENIA, APRIL 2004

### ZAČASNI PODATKI

PROVISIONAL DATA

► Statistični urad ocenjuje, da so slovenski gostinci v prvih štirih mesecih 2004 ustvarili za 2,2 % več prihodka kot v enakem obdobju predhodnega leta. Z vidika dejavnosti, ki jo pretežno opravljajo, so znatno uspešneje poslovala podjetja, ki v glavnem točijo pijače, podjetja, ki nudijo nastanitve, pa niso dosegala svoje ravni iz enakega obdobja prejšnjega leta.

► Tudi v medmesečni primerjavi ugotavljamo, da se je obseg gostinstva v aprilu, glede na april 2003, povečal, in sicer za odstotek. Omenjeno stopnjo rasti je presegla skupina podjetij, ki pretežno točijo pijače; podjetja, kjer servirajo hrano, posebej pa tista, katerih glavna dejavnost je nudenje nastanitve, pa so poslovala pod tem nivojem.

Če izločimo vpliv sezonskih dejavnikov, potem je tudi dinamika poslovanja v gostinstvu v opazovanem mesecu za 0,3 odstotka presegla predhodni mesec.

► Število oseb, ki delajo v gostinstvu, je bilo v aprilu 2004 za malenkost nižje kot v enakem obdobju lani in za 0,8 % višje kot predhodni mesec.

► The Statistical Office estimates that in the first four months of 2004 hotels and restaurants in Slovenia created 2.2% more turnover than in the same period last year. As regards predominant activities, drinks serving enterprises had much better results, while enterprises offering accommodation did not achieve results of the comparable period last year.

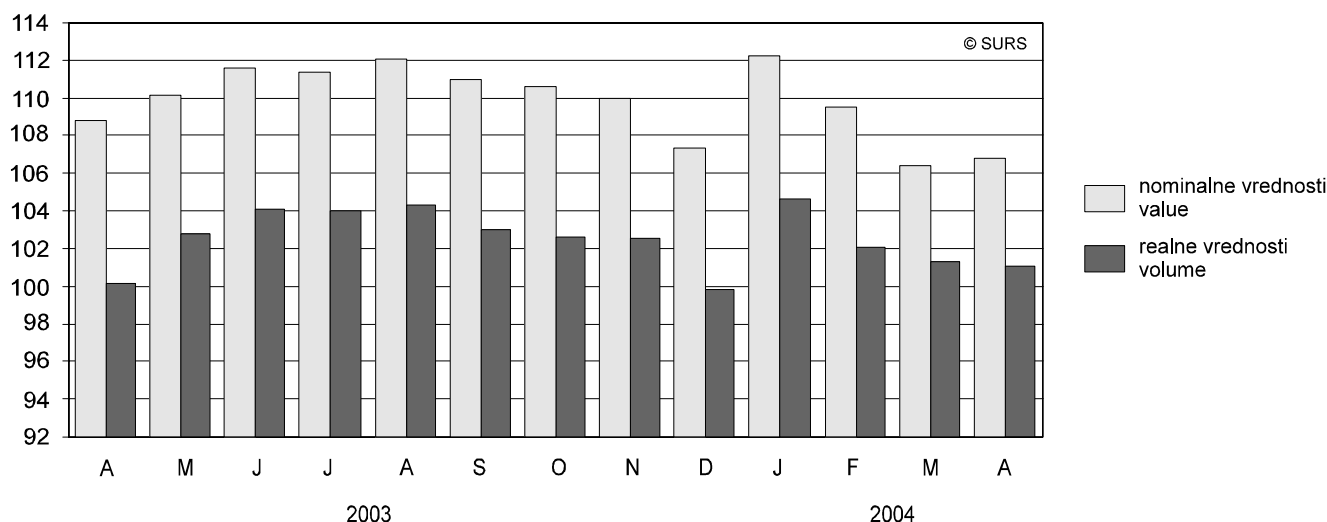
► The month-to-month comparison shows that in April 2004 turnover in hotels and restaurants increased by 1% compared to April 2003. The mentioned growth rate was exceeded by drinks serving enterprises, while operation of food serving enterprises and enterprises offering accommodation was below the average.

If we eliminate the impact of the season, we can see that the dynamics of operation in hotels and restaurants was up by 0.3% compared to March 2004.

► In April 2004 the number persons working in hotels and restaurants was slightly lower than in April 2003 but 0.8% higher than in the previous month.

Slika 1: Indeksi prihodka v gostinstvu, Slovenija, april 2003 - april 2004

Chart 1: Turnover indices in hotels and restaurants activity, Slovenia, April 2003 - April 2004



## 1. PRIHODEK V GOSTINSTVU

## TURNOVER IN HOTELS AND RESTAURANTS ACTIVITY

## 1.1 Indeksi realnega prihodka v gostinstvu po dejavnosti podjetja, Slovenija, marec 2003 - april 2004

The volume indices of hotels and restaurants by activity of enterprise, Slovenia, March 2003 - April 2004

predhodni mesec = 100<sup>1)</sup> / previous month = 100<sup>1)</sup>

	2003										2004				Total
	III	IV	V	VI	VII	VIII	IX	X	XI	XII	I	II	III	IV	
<b>Skupaj</b>	<b>100,6</b>	<b>100,7</b>	<b>100,7</b>	<b>100,6</b>	<b>100,5</b>	<b>100,5</b>	<b>100,4</b>	<b>100,4</b>	<b>100,3</b>	<b>100,4</b>	<b>100,5</b>	<b>100,3</b>	<b>100,2</b>	<b>100,3</b>	
Nastanitve in z njimi povezane storitve	99,8	99,1	100,4	101,0	101,0	100,9	100,2	100,0	99,2	102,0	106,6	99,4	97,1	101,2	Overnights and corresponding services
Priprava in serviranje jedi	101,2	101,1	101,1	100,7	100,6	100,5	100,6	100,3	100,2	99,9	100,4	100,1	99,9	100,0	Food serving services
Točenje pijač	100,6	100,5	112,4	100,2	100,0	100,0	100,0	100,1	100,1	100,0	100,0	100,0	100,0	100,0	Drinks serving services

povprečje 2000 = 100<sup>1)</sup> / average 2000 = 100<sup>1)</sup>

	2003										2004				Total
	III	IV	V	VI	VII	VIII	IX	X	XI	XII	I	II	III	IV	
<b>Skupaj</b>	<b>105</b>	<b>105</b>	<b>106</b>	<b>106</b>	<b>107</b>	<b>107</b>	<b>107</b>	<b>107</b>	<b>107</b>	<b>106</b>	<b>108</b>	<b>108</b>	<b>107</b>	<b>107</b>	
Nastanitve in z njimi povezane storitve	108	108	108	108	108	108	107	106	104	104	112	110	105	106	Overnights and corresponding services
Priprava in serviranje jedi	102	103	104	104	104	104	104	104	104	103	104	104	103	103	Food serving services
Točenje pijač	101	103	118	114	112	110	107	109	110	108	111	110	111	111	Drinks serving services

- 1) Podatki so desezonirani. Vpliv delovnih dni in vpliv slovenskih praznikov ni statistično značilen, zato ga iz podatkov nismo odstranili.  
Data are seasonally adjusted. Because the impact of working-days and Slovenian holidays are not statistically significant, they are not removed.

1.2 Indeksi prihodka v gostinstvu po dejavnosti podjetja, Slovenija, april 2004<sup>1)</sup>Indices of turnover in hotels and restaurants by activity of enterprise, Slovenia, April 2004<sup>1)</sup>

	<u>IV 2004</u> IV 2003	<u>I-IV 2004</u> I-IV 2003	<u>IV 2004</u> Ø 2003	<u>IV 2004</u> III 2004	
<b>Skupaj</b>					<b>Total</b>
Nominalne vrednosti	<b>106,8</b>	<b>108,6</b>	<b>100,8</b>	<b>102,5</b>	<b>Value</b>
Realne vrednosti	<b>101,1</b>	<b>102,2</b>	<b>96,1</b>	<b>100,7</b>	<b>Volume</b>
Nastanitve in z njimi povezane storitve					Overnights and corresponding services
Nominalne vrednosti	103,8	105,9	95,3	107,3	Value
Realne vrednosti	98,5	99,8	91,1	105,4	Volume
Priprava in serviranje jedi					Food serving services
Nominalne vrednosti	106,3	108,4	102,3	100,1	Value
Realne vrednosti	100,7	102,1	97,5	98,3	Volume
Točenje pijač					Drinks serving services
Nominalne vrednosti	116,9	117,1	113,0	98,2	Value
Realne vrednosti	110,1	109,6	107,1	96,5	Volume

- 1) Podatki niso desezonirani niti prilagojeni številu delovnih dni.  
Data are not seasonally nor working-day adjusted.



### 1.3 Koeficienti variacije indeksov prihodka v gostinstvu, Slovenija, april 2004

Coefficients of variation of hotels and restaurants activity indices, Slovenia, April 2004

	Koeficienti variacije (%) Coefficients of variation (%)					
	isti mesec predhodnega leta = 100 corresp. month of the prev. year = 100		predhodni mesec = 100 previous month = 100			
	IV 2004	Ø 2003	IV 2004	Ø 2003	Ø II-XII 2003 <sup>1)</sup>	
<b>Skupaj</b>	<b>1,3</b>	<b>1,0</b>	<b>1,9</b>	<b>1,3</b>	<b>1,2</b>	<b>Total</b>
Nastanitve in z njimi povezane storitve	0,3	1,1	0,4	0,5	0,4	Overnights and corresponding services
Priprava in serviranje jedi	2,9	3,3	3,7	1,4	1,2	Food serving services
Točenje pijač	3,8	8,4	5,6	3,7	3,4	Drinks serving services

1. Ker je standardna napaka indeksa mesec na predhodni mesec v januarju zaradi rotacije vzorca bistveno višja kot v drugih mesecih, je pri tem indeksu podano tudi lansko povprečje brez januarja.  
Because of the sample rotation, in the case of month to previous month index, the standard error for January is significantly higher than for other months. Therefore, last year's average without January is given.

## 2. DELOVNO AKTIVNE OSEBE V GOSTINSTVU

PERSONS IN EMPLOYMENT IN HOTELS AND RESTAURANTS

### 2.1 Indeksi števila delovno aktivnih oseb v gostinstvu po dejavnosti podjetja, Slovenija, april 2004<sup>1)</sup>

Indices of the number of persons in employment in hotels and restaurants by activity of enterprise, Slovenia, April 2004<sup>1)</sup>

	<u>IV 2004</u> IV 2003	<u>I-IV 2004</u> I-IV 2003	<u>IV 2004</u> Ø 2003	<u>IV 2004</u> III 2004	
<b>Skupaj</b>	<b>99,9</b>	<b>99,8</b>	<b>99,7</b>	<b>100,8</b>	<b>Total</b>
Nastanitve in z njimi povezane storitve	102,7	101,3	102,0	101,6	Overnights and corresponding services
Priprava in serviranje jedi	98,5	98,9	98,6	100,9	Food serving services
Točenje pijač	99,0	99,6	98,8	99,6	Drinks serving services

- 1) Podatki niso sezonsirani niti prilagojeni številu delovnih dni.  
Data are not seasonally nor working-day adjusted.

## METODOLOŠKA POJASNILA

### Namen statističnega raziskovanja

je mesečno statistično spremljanje in merjenje prihodka v gostinski dejavnosti. Dopolnjujemo ga s podatki o gibanju števila delovno aktivnih oseb v tej dejavnosti

### Opazovana enota

je praviloma podjetje, ki je po svoji glavni dejavnosti uvrščeno v gostinstvo. Prikazani podatki se nanašajo na celo podjetje, tudi na tisto njegovo morebitno dejavnost, ki ni povezana z gostinstvom.

Veliko podjetij v Sloveniji pa po svoji glavni dejavnosti ne sodi v gostinstvo, vendar ustvarjajo znaten prihodek tudi z gostinstvom kot svojo sekundarno dejavnostjo. Zato smo temu ustrezno prilagodili in dopolnili vzorec. Vanj smo dodatno vključili (oz. izbrali z gotovostjo) 7 takih enot in pri njih upoštevali le podatke, ki se nanašajo na gostinstvo.

### Viri

Podatke zbiramo s statističnim raziskovanjem Mesečno poročilo o poslovanju podjetij, ki opravljajo gostinsko dejavnost (GO/Ma, GO/Mb).

## METHODOLOGICAL EXPLANATIONS

### The purpose of the statistical survey

is monthly statistical observation of turnover on hotels and restaurants activity. It is completed with the number of persons employed in activity mentioned above.

### Observation units

are enterprises whose principal activity is classified in the activity of hotels and restaurants. Data refer to the whole enterprise, including eventual secondary activity not related to the activity of hotels and restaurants.

There are many enterprises in Slovenia whose main activity is not the activity of hotels and restaurants, but which carry out significant secondary activity of hotels and restaurants. Therefore, we adjusted our sample by adding 7 such units, taking into consideration only data referring to the activity of hotels and restaurants.

### Sources

We collect data with the statistical survey Monthly Report on Operation of Enterprises Registered in the Activity of Hotels and Restaurants (GO/Ma,



Izvajamo ga po poštni metodi. Vir podatkov je računovodska dokumentacija podjetij, izjemoma tudi njihova ocena.

Vir podatkov o delovno aktivnih osebah je Statistični register delovno aktivnega prebivalstva (SRDAP), ki ga vodi statistični urad, zato tudi metodološka pojasnila vsebujejo nekatere opredelitve iz tega registra.

SRDAP je bil vzpostavljen na osnovi popisa zaposlenih oseb leta 1986. Dopolnjuje in popravlja (ažurira) se s podatki iz obrazcev M, to je Prijava podatkov za uvedbo in vodenje matične evidence pokojninskega in invalidskega zavarovanja in zdravstvenega zavarovanja ter evidence o sklenitvi delovnega razmerja (M-1, M-2, M-1a, M-3, M-3a, M-DČ).

### Zajetje

Mesečno raziskovanje o prihodku poteka na podlagi vzorca.

Za oblikovanje vzorčnega okvira GO/Ma, b so bili uporabljeni naslednji viri: Poslovni register Slovenije, zaključni računi za leto 2002, Statistični register delovno aktivnega prebivalstva in rezultati rednih statističnih raziskovanj ter podatki nekaterih drugih statističnih raziskovanj. V vzorčni okvir je bilo vključenih 5194 podjetij, od katerih jih je bilo v vzorec izbranih 1 200.

**Vzorec** je razdeljen na stratum, in sicer po dejavnosti in po velikostnih razredih podjetij.

V razvrstitvi podjetij po dejavnosti je upoštevana njihova glavna dejavnost (SKD), to je praviloma tista dejavnost, s katero podjetje ustvari pretežen del dodane vrednosti.

Po velikosti so podjetja razvrščena na velika, srednje velika in mala podjetja. V vzorec so zajeta vsa velika in srednje velika podjetja, stratumski razporeditev malih podjetij pa je optimalna glede na število zaposlenih.

Zaradi načina oblikovanja vzorca in zaradi reorganizacij ali drugih sprememb v poslovanju gostinstva nekatera podjetja ne ustrezajo zahtevam raziskovanja (še niso začela poslovati ali so prenehala poslovati, so v stečajju, ne opravljajo gostinske dejavnosti ipd.). Vsa ta podjetja štejemo za neustrezna. Razmerje med številom ustreznih in številom v vzorec zajetih enot je izraženo s **stopnjo ustreznosti**. Ker se število neustreznih enot iz meseca v mesec lahko spreminja, se temu ustrezno spreminja tudi stopnja ustreznosti.

Tudi število podjetij, ki odgovorijo na vprašalnik, niha iz meseca v mesec. Tista podjetja, ki ne odgovorijo, čeprav so ustrezna oziroma poslujejo, upoštevamo pri neodgovorih (manjkajočih odgovorih). Razmerje med številom prejetih odgovorov in številom ustreznih enot v vzorcu je izraženo z **deležem odgovorov**. Delež odgovorov v aprilu 2004 je obsegal 84,5 %, stopnja ustreznosti pa je bila 92,4-odstotna.

V tabeli o delovno aktivnih osebah so upoštevane vse v opazovani dejavnosti (gostinstvo) zaposlene in samozaposlene osebe, ki so obvezno pokojninsko in zdravstveno zavarovane oziroma so v delovnem razmerju na območju RS.

### Definicije in druga pojasnila

**Prihodek** je skupni znesek, ki ga celotno podjetje obračuna za opravljene storitve (za prodajo blaga) v enem mesecu. Ne zajema davka na dodano vrednost, morebitne prodaje osnovnih sredstev in drugih izrednih dohodkov. Prihodek je prikazan po tekočih cenah glede na obdobje izdaje računa.

**Delovno aktivno prebivalstvo v SRDAP** so zaposlene in samozaposlene osebe, ki so:

- obvezno pokojninsko in zdravstveno zavarovane oziroma so v delovnem razmerju na območju Republike Slovenije;
- stare od 15 let do upokojitve.

GO/Mb) by using the postal method. The source of data is accounting documentation of enterprises and only exceptionally their estimates.

The data source on persons in employment is the Statistical Register of Employment, which is kept by our office and that is the reason to add some important explanation of this register in this publication.

It was set up on the basis of the 1986 census of persons in paid employment. The data on employment are obtained from monthly M forms, i.e. registration of data for the introduction and keeping of the central record of pension and disability insurance, health insurance and employment (M-1, M-2, M-1a, M-3, M-3a, M-DČ).

### Coverage

Monthly statistical survey on turnover is conducted on the sampling basis.

To create the sampling frame of the survey GO/Ma, b, the following sources were used: Business Register of Slovenia, final accounts for 2002, the statistical register of persons in employment, results of the regular statistical surveys on hotels and restaurants activity, and data of some other statistical surveys. There were 5,194 enterprises included in the sampling frame, from which 1,200 were selected in the sample.

**The sample** is divided into strata by activities and size of enterprises.

The classification of enterprises by activity takes into consideration their main activity (according to NACE Rev. 1.), which is the one having the greatest share in the enterprise's value added.

Enterprises are classified by size into small, medium-sized and large. All large and medium-sized enterprises were included in the sample, while in small enterprises the stratum allocation depended on the number of employees.

Due to the method of creating the sample and due to reorganisation and other changes in operation, some enterprises do not meet survey requirements (have not started to operate, stopped their operations, are bankrupt, are not involved in the activity of hotels and restaurants, etc.). All these enterprises are labelled ineligible. The number of eligible units in the total number of units is the **eligibility rate**. The eligibility rate can change between months because of the changes in the number of ineligible units.

The number of enterprises that answer the questionnaire also changes between months. Those enterprises that do not respond are labelled non-response. The number of received responses in the total number of eligible units in the sample is the **response rate**. The response rate for April 2004 was 84.5%; the eligibility rate was 92.4%.

The Statistical Register of Employment covers all persons in paid employment in activity observed (Hotels and Restaurants) and self-employed persons who have compulsory pension and health insurance or are employed on the territory of the Republic of Slovenia.

### Definitions and other explanations

**Turnover** is the total amount that the enterprises settled for performed services (sale of goods) in the month. It excludes the value-added tax, eventual sale of fixed assets and other extra income. The turnover is shown at current prices of the month of invoicing.

**Persons in employment in the Statistical Register of Employment** are persons in paid employment and self-employed persons who:

- have compulsory pension and health insurance or are employed on the territory of the Republic of Slovenia;
- are at least 15 years old and not retired.



Delovno razmerje je lahko sklenjeno za določen ali nedoločen čas, s polnim delovnim časom ali z delovnim časom, krajšim od polnega.

K delovno aktivnemu prebivalstvu, ki je zajeto v tabeli, sodijo:

- osebe, ki so v delovnem razmerju (zaposlene osebe): pri podjetju, družbi, zavodu, drugi organizaciji; pri podružnicah tujih podjetij; izvoljeni ali imenovani nosilci javne ali družbene funkcije; matere z otrokom, ki delajo po posebnih predpisih; lastniki podjetij, ki podjetja osebno vodijo in niso zavarovani iz drugega naslova; od 1. 1. 1999 udeleženci javnih del; k zaposlenim osebam ne štejemo oseb, ki delajo v teh podjetjih, družbah in organizacijah po pogodbi o delu ali po avtorski pogodbi, in državljanov Republike Slovenije s stalno zaposlitvijo v slovenskih predstavništvih, na gradbiščih ipd. v tujini.
- osebe, ki so v delovnem razmerju (zaposlene osebe): pri osebah, ki opravljajo gospodarsko ali pridobitno dejavnost; pri osebah, ki opravljajo poklicno dejavnost kot edini ali glavni poklic; pri fizičnih osebah, ki uporabljajo dopolnilno delo drugih ljudi;
- samozaposlene osebe: osebe, ki opravljajo gospodarsko ali pridobitno dejavnost (samostojni podjetniki posamezniki); osebe, ki opravljajo poklicno dejavnost kot edini ali glavni poklic (npr. samostojni raziskovalci).

Poročevalski datum, tj. datum, na katerega se nanašajo podatki iz SRDAP-a, je zadnji dan v poročevalskem (referenčnem) mesecu. Povprečje leta je dvanajstina seštevka podatkov vseh dvanajstih mesecev leta.

Za podrobnejša pojasnila v zvezi s podatki o delovno aktivnih osebah se lahko obrnete na Oddelek za statistiko dela na Statističnem uradu Republike Slovenije.

### Obdelava podatkov

Podatke o prihodku podjetij, ki na vprašalnik ne odgovorijo, ocenimo (jim jih pripišemo ali jih imputiramo) glede na njihove podatke o prihodku in številu oseb, ki delajo, v prejšnjem mesecu ter glede na porezno povprečno razmerje med prihodkom v tekočem in prejšnjem mesecu tistih podjetij v isti stratumski celici, ki so odgovorila. Če ni odgovorilo podjetje, ki je v vzorcu novo, podatke o njegovem prihodku ocenimo s pomočjo ostalih odgovorov v isti stratumski celici ter njegovih registrskih podatkov.

Podatki so uteženi zaradi verjetnosti izbora, uteži pa so nato še popravljene glede na razmerje rojstev in smrti v populaciji.

Rezultate objavljamo v obliki indeksov.

Indekse smo desezonirali z metodo Tramo/Seats, ki temelji na ARIMA-modelih. Pri oblikovanju modelov smo upoštevali časovno obdobje od januarja 1999 do januarja 2004. Desezonirane vrednosti so vrednosti, pri katerih je izločen vpliv sezonskih dejavnikov, tj. vrednosti, ki vsebujejo trendni cikel in naključno komponento.

Vpliv različnega števila delovnih dni in slovenskih praznikov v gostinstvu ni statistično značilen.

Objavljamo tudi indekse nominalnih in indekse realnih vrednosti. Pri drugih izločimo spremembo cen tako, da nominalne indekse deflaciniramo z ustreznimi indeksi cen gostinskih storitev.

### Koeficient variacije

Za dva izmed objavljenih indeksov (primerjava tekočega meseca s preteklim mesecem in tekočega meseca z istim mesecem preteklega leta) je v tabelah objavljen tudi koeficient variacije (relativna standardna napaka). Standardna napaka ocene je izračunana s postopkom Taylorjeve linearizacije, prirejenim za oceno indeksa. Za lažjo primerjavo so v tabeli podani tudi povprečni koeficienti variacije v lanskem letu.

Employment can be permanent or temporary, full time or part time.

Persons in employment covered in the table are:

- persons in paid employed in enterprises, companies, institutions and other organisations or in subsidiaries of foreign enterprises, elected or appointed holders of public functions, mothers with children working under special regulations, owners or enterprises who run them personally and are not insured otherwise, and since 1 January 1999 people performing public works; persons in paid employment **are not** persons working in enterprises, companies and organisations via contracts for work and citizens of the Republic of Slovenia permanently employed in Slovene embassies, on construction sites, etc., abroad.
- persons in paid employment at self-employed persons, at own account workers performing their activity as the only or principal occupation, and at natural persons using supplementary work of other people;
- self-employed persons: persons performing economic or gainful activity (individual private entrepreneurs) and own account workers performing their activity as the only or principal occupation (e.g. independent researchers).

The date that the data on persons in employment refer to is the last day of the observed month. The average of the year is one twelfth of the sum of the twelve months of the year.

More detailed explanations on persons in employment are available at the Labour Statistics Department of the Statistical Office of the Republic of Slovenia.

### Data processing

We estimate (impute) the data for enterprises which did not answer the questionnaire, taking into account their register data on turnover and number of persons working in them, and the levelled average ratio between the turnover in the current and the previous month of enterprises in the same stratum that answered the questionnaire. If an enterprise is new in the sample and did not answer, we estimate its data with the help of other answers in the same stratum and their register data.

Data are weighted because of probability of selection and weights are corrected for the ratio between dead and new-born units in population.

Results are published as indices.

Indices are seasonally adjusted with the Tramo/Seats method based on ARIMA models. In designing the models we took into account the period from January 1999 to January 2004. By seasonally adjusting values the influence of the season, which includes the trend-cycle and random component, is eliminated.

The impact of working days and Slovenian holidays is not statistically significant for hotels and restaurants activity.

We publish as well the value and volume indices. In volume indices we eliminated the change of prices by deflating the value indices with corresponding hotels and restaurants price indices.

### Coefficient of variation

For two indices (comparison month to previous month and month to the same month of the previous year) the coefficient of variation (relative standard error) is also published. Standard error of the estimation is calculated by Taylor's linearization, adjusted for the case of index estimation. For better comparison also last year average coefficients of variation are published.

Pomen koeficientov variacije:

CV < 10 %; podatek je zanesljiv,

10 % < CV < 15 %; podatek je manj zanesljiv,

15 % < CV < 30 %; podatek je precej nezanesljiv, zato ga objavimo v oklepaju, npr. (110,3).

CV > 30 %; podatek ni primeren za objavo.

Indeksi so objavljeni na ravni sestavljenih skupin dejavnosti, za katere so podatki še reprezentančni.

The meaning of the coefficients of variation:

CV<10 %; data are reliable,

10%<CV<15%; data are less reliable,

15%<CV<30%; data are rather uncertain, published in parenthesis, for example (110,3).

CV>30%; data are not relevant for publishing.

Indices are published at the level of aggregates for which the data are still representative:

Objavljene skupine Groups of	Dejavnosti (razredi SKD), na katere se nanašajo objavljeni podatki Activities (classes of SKD) to which the published data relate	
Dejavnosti Activities	Šifra Code	Dejavnost Activities
Gostinstvo skupaj Hotels and restaurants total	55.	Gostinstvo skupaj Hotels and restaurants total
nastanitve in z njimi povezane storitve overnight and corresponding services	55.10, 55.21, 55.22, 55.23	dejavnost hotelov in podobnih obratov; dejavnost planinskih domov in mladinskih prenočišč; dejavnost kampov; dejavnost drugih nastanitvenih obratov (otroških letovišč in sindikalnih domov, turističnih kmetij z nastanitvenimi zmogljivostmi ...) accommodation services supplied by hotels and similar facilities: youth hostels and mountain refuges, camping sites and other short-stay accommodation services (vacation facilities for children, company vacation facilities, tourism in villages, etc.)
Priprava in serviranje jedi food serving services	55.30, 55.51, 55.52	dejavnost prehrambenih gostinskih obratov, dejavnost restavracij in gostiln, dejavnost okrepčevalnic, samopostrežnih restavracij, picerij, dejavnost slaščičarn, kavarn. dejavnost prečiščenih gostinskih obratov, dejavnost drugih prehrambenih obratov; dejavnost menz, priprava in dostava hrane food serving services in restaurants and inns, pubs and self-service restaurants, pizza parlours, confectioneries, cafes, mobile and other food serving facilities, canteens, and preparation and delivery of food.
Točenje pijač Drinks serving services	55.40	točenje pijač in napitkov v barih in v drugih lokalih drinks serving services in bars and other drinks serving facilities

Mesečni podatki so začasni. Popravljamo in dopolnjujemo jih praviloma za tri mesece nazaj, izjemoma za vse leto. Popravke in dopolnitve vključujemo v mesec opazovanja po sprejemu popravka.

Končne podatke objavljamo enkrat letno (predvidoma v juliju za prejšnje leto).

#### Objavljanje

Mesečno: Prva statistična objava. Gostinstvo in turizem.

Statistične informacije. Gostinstvo in turizem. Indeksi prihodka v gostinstvu.

Mesečni statistični pregled Republike Slovenije.

Letno: Statistični letopis Republike Slovenije

Monthly data are provisional. They are regularly corrected and updated for the last three months, exceptionally for the whole year. Supplements and data corrections are included in the month of observation after the date of correction.

The final data are published once a year (presumably in July for the previous year).

#### Publishing

Monthly: First Release. Hotels and Restaurants, Tourism

Rapid Reports. Hotels and Restaurants, Tourism. Indices of Turnover in Hotels and Restaurants.

Monthly Statistical Review of the Republic of Slovenia.

Annually: Statistical Yearbook of the Republic of Slovenia

#### Sestavil / Prepared by: Marko Polh

Izdaja, založba in tisk Statistični urad Republike Slovenije, Ljubljana, Vožarski pot 12 - **Uporaba in objava podatkov dovoljena le z navedbo vira** - Odgovarja generalna direktorica mag. Irena Križman - Urednica zbirke Statistične informacije Marina Urbas - Slovensko besedilo jezikovno uredila Ivanka Zobec - Angleško besedilo jezikovno uredil Boris Panič - Tehnični urednik Anton Rojc - Naklada 120 izvodov - ISSN zbirke Statistične informacije 1408-192X - ISSN podzbirke Gostinstvo in turizem 1408-9297 - Informacije daje Informacijsko središče, tel.: (01) 241 51 04 - El. pošta: info.stat@gov.si - http://www.stat.si.

Edited, published and printed by the Statistical Office of the Republic of Slovenia, Ljubljana, Vožarski pot 12 - **These data can be used provided the source is acknowledged** - Director-General Irena Križman - Rapid Reports editor Marina Urbas - Slovene language editor Ivanka Zobec - English language editor Boris Panič - Technical editor Anton Rojc - Total print run 120 copies - ISSN of Rapid Reports 1408-192X - ISSN of subcollection Hotels and restaurants, tourism 1408-9297 - Information is given by the Information Centre of the Statistical Office of the Republic of Slovenia, tel.: +386 1 241 51 04 - E-mail: info.stat@gov.si - http://www.stat.si.