

№ 225 / 1955

gmm

20

7/10 58

Nae lipiei zelei

(G. S. Roman)

Introducere storn.

Handwritten musical notation for the introduction, including a treble clef, a 6/8 time signature, and a key signature of one flat. The notation features a melodic line with slurs and accents, and a piano accompaniment with chords and rhythmic patterns.

Handwritten musical notation with lyrics: *li - pi - ci ze - le - ni je phi - ca pe - va -*

Handwritten musical notation for piano accompaniment corresponding to the first line of lyrics.

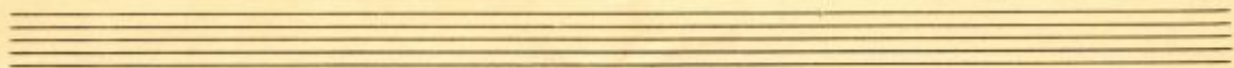
Handwritten musical notation with lyrics: *pa - li - pi - co uo - di si pa*

Handwritten musical notation for piano accompaniment corresponding to the second line of lyrics.

Handwritten musical score for the first system. The top staff contains a vocal line with lyrics: "ris - cu in - ga - la ... In sa - pri - ca pi -". The piano accompaniment is written on two staves below, with various chords and melodic lines. A blue diagonal line is drawn across the system.

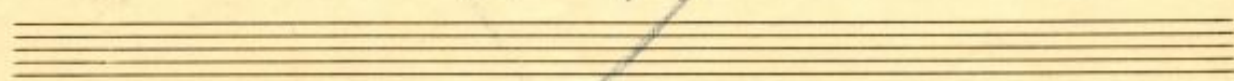
Handwritten musical score for the second system. The top staff contains a vocal line with lyrics: "a - le King na - ju so lu - Co lu". The piano accompaniment is written on two staves below, with various chords and melodic lines. A blue diagonal line is drawn across the system.

Handwritten musical score for the third system. The top staff contains a vocal line with lyrics: "be - na ni - ni - ce - cu sau li - po sau ve -". The piano accompaniment is written on two staves below, with various chords and melodic lines. A blue diagonal line is drawn across the system.

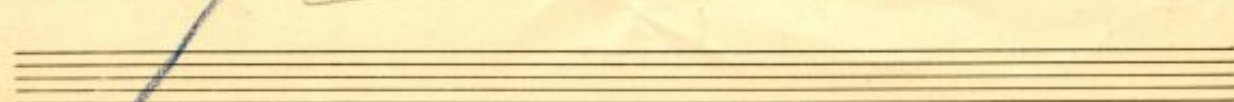


giovani

sto . . . b - en - las re je



li - pu , so - ai - co adrie ji le d. — 2 daj



tempo

dau le pen sa - ha - au, po le bi i - cam

And
7daj sam ta sem ra - ha - jam, po



te - si iö - cum *And...*



2. 10. 07

