



**Dnevni
metulji
Slovenije 2**

Nadaljevalni določevalni ključ

Z Evropskim monitoringom dnevnih metuljev (eBMS) si prizadevamo bolje spoznati spremembe številčnosti njihovih populacij. Pri tem monitoringu, oziroma spremljanju stanja, po vsej Evropi tisoče prostovoljcev popisuje metulje po enotni metodi. Tako pridobljeni podatki so strokovni temelj za varstvo metuljev in njihovih življenjskih prostorov tako v Sloveniji, kot na območju celotne Evrope.

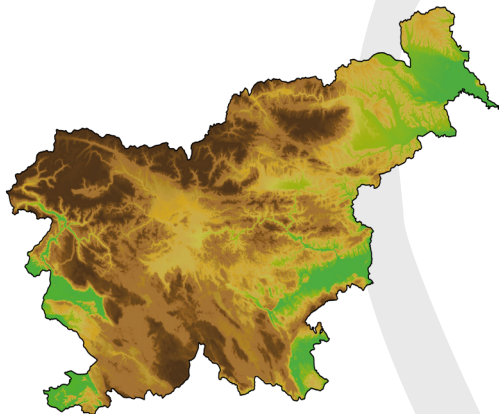
Pred vami je terenski slikovni določevalni ključ, ki služi kot dodatek k Osnovnemu določevalnemu ključu **Dnevni metulji Slovenje 1**. V obeh določevalnih ključih je skupaj predstavljenih 163 vrst. Določevalna ključa uporabljajte kot pripomoček pri prepoznavanju in štetju metuljev.

*Ta terenski vodič je na voljo na spletni strani eBMS:
www.butterfly-monitoring.net/sl/field-guides*

Spremljajmo metulje za njihovo varstvo!

Dnevni metulji Slovenije

Vrstna pestrost dnevnih metuljev v Sloveniji je, glede na površino države, izredno velika. Skupno v Sloveniji živi 181 vrst dnevnih metuljev. Lahko prepoznavne in splošno razširjene vrste metuljev, ki jih lahko najdemo skoraj povsod, tudi na domačem vrtu, so predstavljene v Osnovnem določevalnem ključu Dnevni metulji Slovenije 1. Nekatero vrsto pa so ozko specializirane in jih najdemo samo v določenih delih države.



Primer takih vrst so metulji iz rodu rjavčkov (*Erebia*), večino katerih lahko srečamo le v višje ležečih predelih države (Alpe, Pohorje, Nanos, itd.). Prav tako so si določene vrste med seboj izredno podobne in posledično je njihovo razlikovanje oziroma določanje bolj zahtevno. Večina teh metuljev je vključenih v to brošuro, v kateri je predstavljenih 63 vrst dnevnih metuljev, ki so težje prepoznavne oz. ozko razširjene v Sloveniji. Za lažje določanje podobnih vrst pa je dodanih tudi 37 vrst, ki so sicer že vključene v osnovnem določevalnem ključu.

Monitoring dnevnih metuljev

Za spremljanje stanja dnevnih metuljev se uporablja metoda transektnega štetja. Več o metodi transektnega štetja si lahko preberete v osnovnem določevalnem ključu Dnevni metulji Slovenije 1.

Če se želite pridružiti spremljanju metuljev in opravljati popise na svojem transektu, obiščite www.butterfly-monitoring.net ali stran Društva za proučevanje in ohranjanje metuljev Slovenije www.facebook.com/metulji, kjer nas lahko kontaktirate.

Kako uporabljati določevalni ključ?

V tem terenskem določevalnem ključu je predstavljenih 63 težje prepoznavnih ali lokalno razširjenih vrst dnevnih metuljev, ter 37 lažje prepoznavnih in bolj pogostih vrst, ki služijo primerjavi in lažjemu določanju. Vrste so urejene sistematično po družinah in skupaj s podobnimi vrstami, kar olajša prepoznavo metuljev.

Pri večini vrst je v terenskem določevalnem ključu prikazana spodnja in zgornja stran kril, pri vrstah z izrazito spolno dvočlnostjo, pa so ločeno prikazani samci in samice. Vsaka vrsta je poimenovana s slovenskim in strokovnim imenom, kjer so z rdečo barvo obarvana imena tistih vrst, ki so prav tako vključene v določevalni ključ [Dnevni metulji Slovenije 1](#). Poleg tega pa lahko pri vsaki vrsti vidite tudi v katerih mesecih se pojavlja v Sloveniji, kategorijo velikosti (majhen, srednji, velik) in stopnjo ogroženosti vrste, v primeru le te. Znaki, na katere moramo biti posebno pozorni pri določevanju, so posebej poudarjeni in označeni ob slikah metuljev.

Nekatere vrste dnevnih metuljev imajo zelo lahko prepoznaven barvni vzorec na krilih in jih je zato praktično nemogoče zamenjati s katero drugo vrsto. Večina teh vrst je predstavljena v Osnovnem določevalnem ključu [Dnevni metulji Slovenije 1](#). Pri nas pa živijo tudi vrste, ki so si med seboj zelo podobne in jih na prvi pogled težko razlikujemo. Zaradi tega moramo biti pri določanju metuljev zelo pazljivi, pri nekaterih vrstah moramo namreč preveriti več različnih določevalnih znakov. Včasih je določanje oteženo tudi zaradi poškodovanosti metulja ali obledelosti vzorca na njegovih krilih. Z letanjem metulji namreč izgubljajo luske, ki jim dajejo značilne barve in vzorce. V določenih primerih pa določitev do vrste tudi ni mogoča.



lepi brezar
Thecla betulae



J F M A M J J A S O N D

bela črta v
obliki črke W

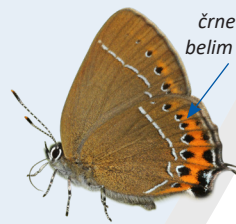


beločrti repkar
Satyrium w-album



J F M A M J J A S O N D

črne lise z
belim robom



slivov repkar
Satyrium pruni



J F M A M J J A S O N D



trnov repkar
Satyrium spini



J F M A M J J A S O N D

bela črta prekinjena,
rdeče lise manjše in
temnejše



hrastov repkar
Satyrium ilicis



J F M A M J J A S O N D

majhna srebrno-
modra lisa



mali repkar
Satyrium acaciae



J F M A M J J A S O N D

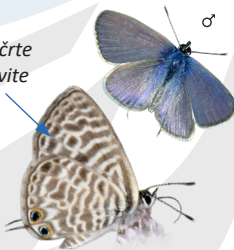


pelargonijev bakrenček
Cacyreus marshalli



J F M A M J J A S O N D

bele črte
valovite



modri marogarček
Leptotes pirithous



J F M A M J J A S O N D



repati lesketavček
Lampides boeticus

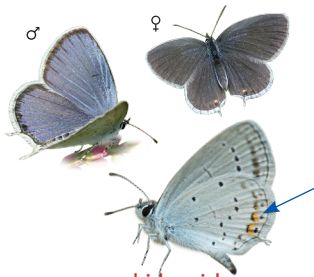


J F M A M J J A S O N D



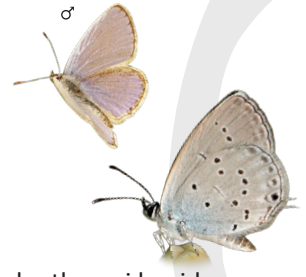
mali kupido
Cupido minimus

J	F	M	A	M	J	J	A	S	O	N	D
---	---	---	---	---	---	---	---	---	---	---	---



rumenooki kupido
Cupido argiades

J	F	M	A	M	J	J	A	S	O	N	D
---	---	---	---	---	---	---	---	---	---	---	---



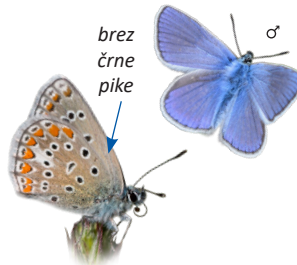
kratkorepi kupido
Cupido alcetas

J	F	M	A	M	J	J	A	S	O	N	D
---	---	---	---	---	---	---	---	---	---	---	---



modri kupido
Cupido osiris

J	F	M	A	M	J	J	A	S	O	N	D
---	---	---	---	---	---	---	---	---	---	---	---



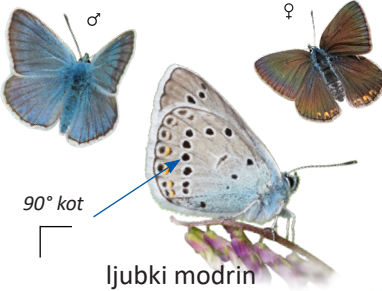
deteljin modrin
Polyommatus thersites

J	F	M	A	M	J	J	A	S	O	N	D
---	---	---	---	---	---	---	---	---	---	---	---



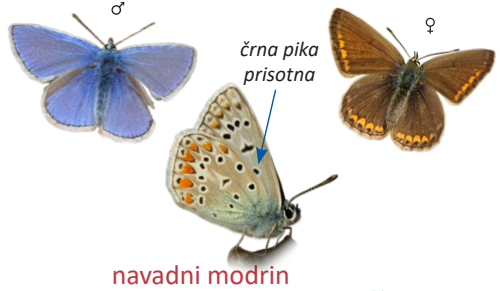
gorska bledica
Agriades orbitulus

J	F	M	A	M	J	J	A	S	O	N	D
---	---	---	---	---	---	---	---	---	---	---	---



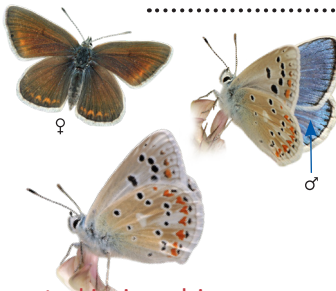
ljubki modrin
Polyommatus amandus

J	F	M	A	M	J	J	A	S	O	N	D
---	---	---	---	---	---	---	---	---	---	---	---



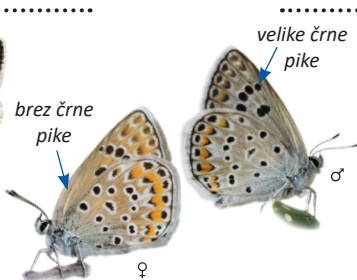
navadni modrin
Polyommatus icarus

J	F	M	A	M	J	J	A	S	O	N	D
---	---	---	---	---	---	---	---	---	---	---	---



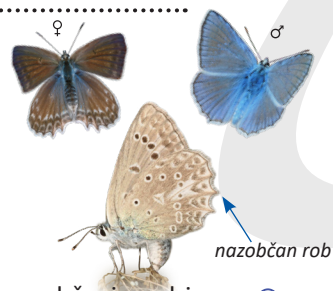
turkizni modrin
Polyommatus dorylas

J	F	M	A	M	J	J	A	S	O	N	D
---	---	---	---	---	---	---	---	---	---	---	---



primorski modrin
Polyommatus escheri

J	F	M	A	M	J	J	A	S	O	N	D
---	---	---	---	---	---	---	---	---	---	---	---



nazobčani modrin
Polyommatus daphnis

J	F	M	A	M	J	J	A	S	O	N	D
---	---	---	---	---	---	---	---	---	---	---	---



veliki mehurkar
Iolana iolas



J F M A M J J A S O N D



veliki mravljiščar
Phengaris arion



J F M A M J J A S O N D



strašničin mravljiščar
Phengaris teleius



J F M A M J J A S O N D



modri grašičar
Cyaniris semiargus



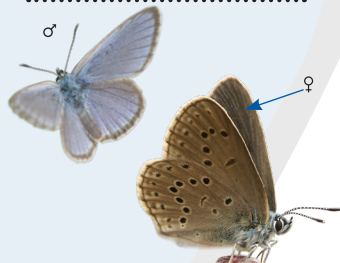
J F M A M J J A S O N D



temni mravljiščar
Phengaris nausithous



J F M A M J J A S O N D



sviščev mravljiščar
Phengaris alcon



J F M A M J J A S O N D



navadna rjavka
Aricia agestis



J F M A M J J A S O N D



hribska rjavka
Aricia artaxerxes



J F M A M J J A S O N D



navadna krvomočničarka
Eumedonia eumedon



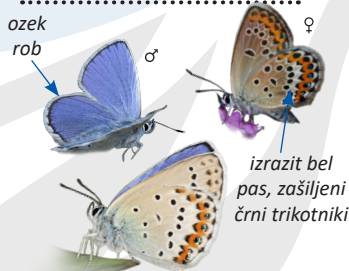
J F M A M J J A S O N D



širokorobi mnogook
Plebejus argus



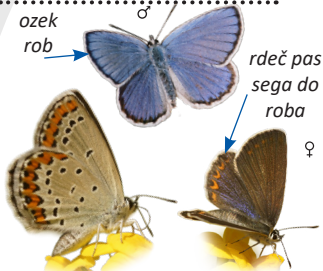
J F M A M J J A S O N D



ozkorobi mnogook
Plebejus idas



J F M A M J J A S O N D



srebrni mnogook
Plebejus argyrognomon

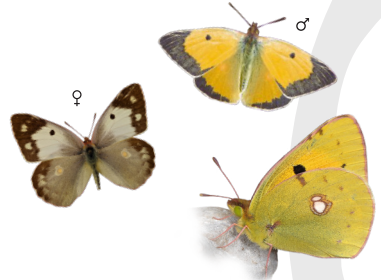


J F M A M J J A S O N D



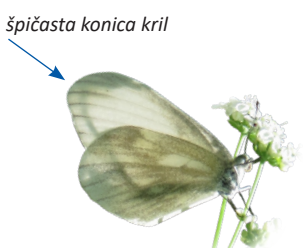
bledi/rumeni senožetnik
Colias hyale/alfacariensis

J	F	M	A	M	J	J	A	S	O	N	D
---	---	---	---	---	---	---	---	---	---	---	---



navadni senožetnik
Colias crocea

J	F	M	A	M	J	J	A	S	O	N	D
---	---	---	---	---	---	---	---	---	---	---	---



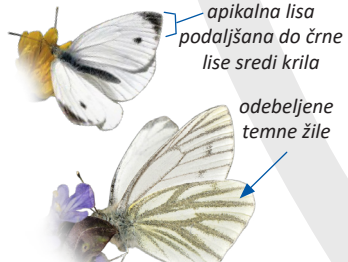
veliki frfotavček
Leptidea morsei

J	F	M	A	M	J	J	A	S	O	N	D
---	---	---	---	---	---	---	---	---	---	---	---



navadni/irski frfotavček
Leptidea sinapis/juvernica

J	F	M	A	M	J	J	A	S	O	N	D
---	---	---	---	---	---	---	---	---	---	---	---



repičin belin
Pieris napi

J	F	M	A	M	J	J	A	S	O	N	D
---	---	---	---	---	---	---	---	---	---	---	---



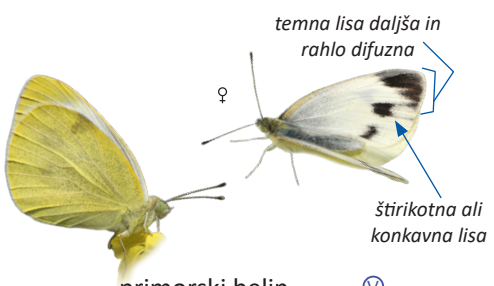
planinski belin
Pieris bryoniae

J	F	M	A	M	J	J	A	S	O	N	D
---	---	---	---	---	---	---	---	---	---	---	---



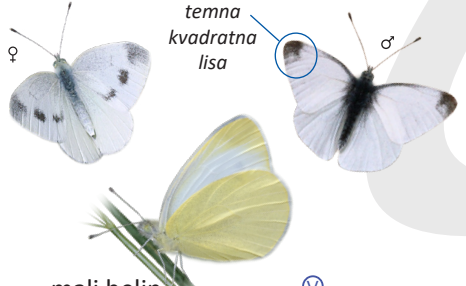
repin belin
Pieris rapae

J	F	M	A	M	J	J	A	S	O	N	D
---	---	---	---	---	---	---	---	---	---	---	---



primorski belin
Pieris mannii

J	F	M	A	M	J	J	A	S	O	N	D
---	---	---	---	---	---	---	---	---	---	---	---



mali belin
Pieris ergane



J	F	M	A	M	J	J	A	S	O	N	D
---	---	---	---	---	---	---	---	---	---	---	---

antene kovljasto zakrivljene





lise na zadnjem krilu niso bele

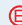



slezenovčev kosmičar 
Carcharodus alceae 

J	F	M	A	M	J	J	A	S	O	N	D
---	---	---	---	---	---	---	---	---	---	---	---

čišljakov kosmičar 
Carcharodus lavatherae 

J	F	M	A	M	J	J	A	S	O	N	D
---	---	---	---	---	---	---	---	---	---	---	---

močvirski kosmičar 
Carcharodus floccifera 

J	F	M	A	M	J	J	A	S	O	N	D
---	---	---	---	---	---	---	---	---	---	---	---

bele lise izrazite



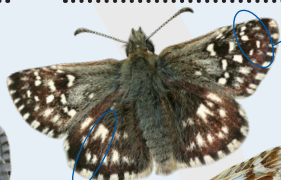
svetlejša spodnja stran kril



ozke bele lise

veliki slezovček 
Pyrgus carthami 

J	F	M	A	M	J	J	A	S	O	N	D
---	---	---	---	---	---	---	---	---	---	---	---





tri lise v liniji

navadni slezovček 
Pyrgus malvae 

J	F	M	A	M	J	J	A	S	O	N	D
---	---	---	---	---	---	---	---	---	---	---	---



dve lise v obliki puščice

jagodnjakov slezovček 
Pyrgus armoricanus 

J	F	M	A	M	J	J	A	S	O	N	D
---	---	---	---	---	---	---	---	---	---	---	---



dve lise zrcalni



dve beli lise

bazalna lisa okrogla





olivni slezovček 
Pyrgus serratulae 

J	F	M	A	M	J	J	A	S	O	N	D
---	---	---	---	---	---	---	---	---	---	---	---



zabrisane bele lise

zelenosivi slezovček 
Pyrgus alveus 

J	F	M	A	M	J	J	A	S	O	N	D
---	---	---	---	---	---	---	---	---	---	---	---

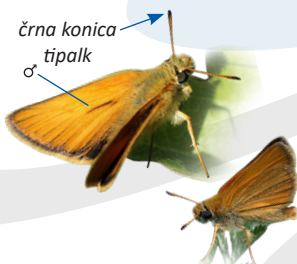


štiri lise v liniji

rdečkasti venčar 
Spialia sertorius 

J	F	M	A	M	J	J	A	S	O	N	D
---	---	---	---	---	---	---	---	---	---	---	---

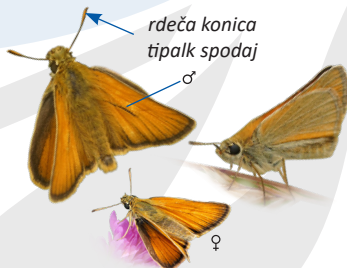
črna konica tipalk





kratkočrti debeloglavček 
Thymelicus lineola 

J	F	M	A	M	J	J	A	S	O	N	D
---	---	---	---	---	---	---	---	---	---	---	---

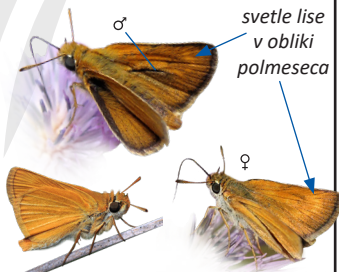
rdeča konica tipalk spodaj





dolgočrti debeloglavček 
Thymelicus sylvestris 

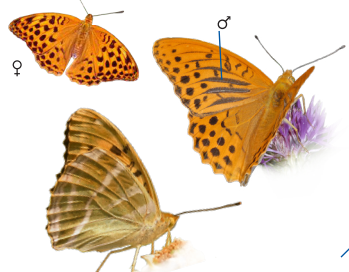
J	F	M	A	M	J	J	A	S	O	N	D
---	---	---	---	---	---	---	---	---	---	---	---

svetle lise v obliki polmeseca



lunolisi debeloglavček 
Thymelicus acteon 

J	F	M	A	M	J	J	A	S	O	N	D
---	---	---	---	---	---	---	---	---	---	---	---



gospica
Argynnis paphia



J	F	M	A	M	J	J	A	S	O	N	D
---	---	---	---	---	---	---	---	---	---	---	---



temni bisernik
Fabriciana niobe



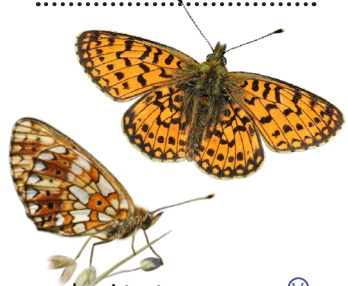
J	F	M	A	M	J	J	A	S	O	N	D
---	---	---	---	---	---	---	---	---	---	---	---



pisani bisernik
Fabriciana adippe



J	F	M	A	M	J	J	A	S	O	N	D
---	---	---	---	---	---	---	---	---	---	---	---



srebrni tratar
Boloria selene



J	F	M	A	M	J	J	A	S	O	N	D
---	---	---	---	---	---	---	---	---	---	---	---



pomladni tratar
Boloria euphrosyne



J	F	M	A	M	J	J	A	S	O	N	D
---	---	---	---	---	---	---	---	---	---	---	---



gorski tratar
Boloria pales



J	F	M	A	M	J	J	A	S	O	N	D
---	---	---	---	---	---	---	---	---	---	---	---



temni tratar
Boloria thore



J	F	M	A	M	J	J	A	S	O	N	D
---	---	---	---	---	---	---	---	---	---	---	---



planinski tratar
Boloria titania



J	F	M	A	M	J	J	A	S	O	N	D
---	---	---	---	---	---	---	---	---	---	---	---

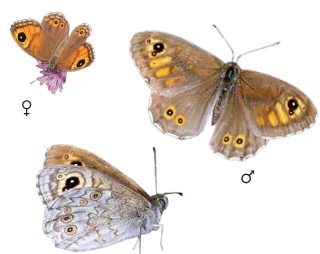


bela lisa v obliki črke C

beli c
Polygonia c-album



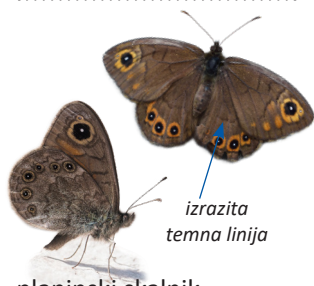
J	F	M	A	M	J	J	A	S	O	N	D
---	---	---	---	---	---	---	---	---	---	---	---



veliki skalnik
Lasiommata maera



J	F	M	A	M	J	J	A	S	O	N	D
---	---	---	---	---	---	---	---	---	---	---	---

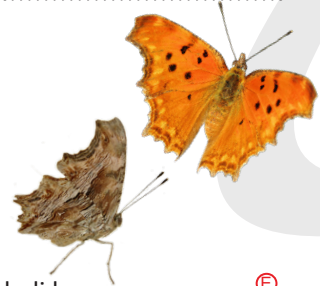


izrazita temna linija

planinski skalnik
Lasiommata petropolitana



J	F	M	A	M	J	J	A	S	O	N	D
---	---	---	---	---	---	---	---	---	---	---	---



beli l
Polygonia egea



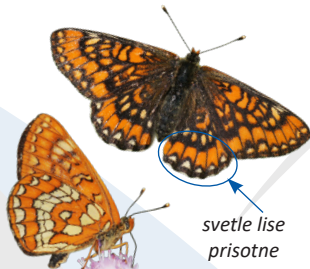
J	F	M	A	M	J	J	A	S	O	N	D
---	---	---	---	---	---	---	---	---	---	---	---



brez izrazitih svetlih lis

ruševni postavnež
Euphydryas intermedia

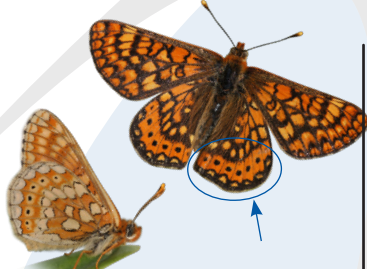
J F M A M J J A S O N D



svetle lise prisotne

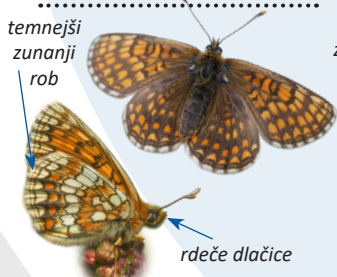
gozdni postavnež
Euphydryas maturna

J F M A M J J A S O N D



travniški postavnež
Euphydryas aurinia

J F M A M J J A S O N D

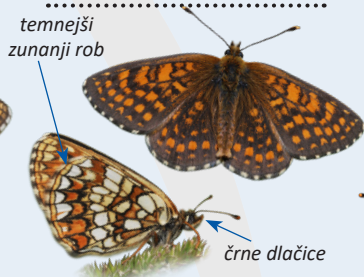


temnejši zunanji rob

rdeče dlačice

jetičnikov pisanček
Melitaea aurelia

J F M A M J J A S O N D

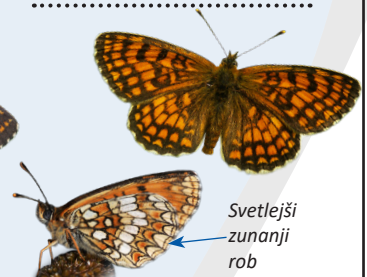


temnejši zunanji rob

črne dlačice

temni pisanček
Melitaea britomartis

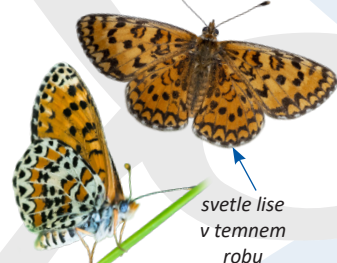
J F M A M J J A S O N D



Svetlejši zunanji rob

navadni pisanček
Melitaea athalia

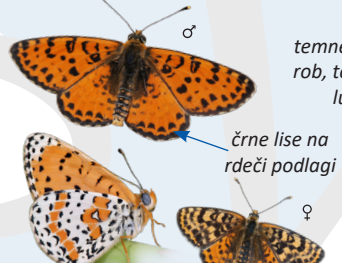
J F M A M J J A S O N D



svetle lise v temnem robu

lučnikov pisanček
Melitaea trivia

J F M A M J J A S O N D

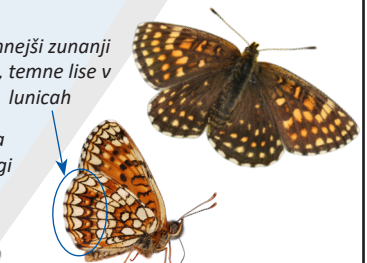


črne lise na rdeči podlagi

temnejši zunanji rob, temne lise v lunicah

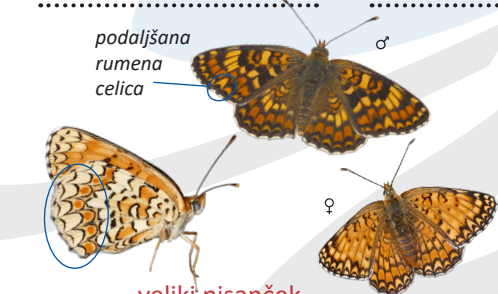
rdeči pisanček
Melitaea didyma

J F M A M J J A S O N D



močvirski pisanček
Melitaea diamina

J F M A M J J A S O N D



podaljšana rumena celica

robna črta ni sklenjena

veliki pisanček
Melitaea phoebe

J F M A M J J A S O N D



okrašeni pisanček
Melitaea ornata

J F M A M J J A S O N D



veliki gozdnik
Hipparchia fagi



J F M A M J J A S O N D



rjasti gozdnik
Hipparchia semele



J F M A M J J A S O N D



travnar
Brintesia circe



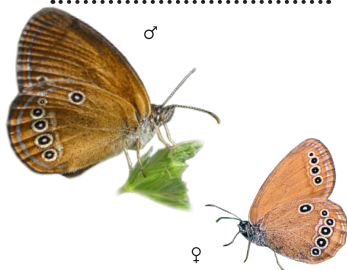
J F M A M J J A S O N D



munčev okarček
Coenonympha tullia



J F M A M J J A S O N D



barjanski okarček
Coenonympha oedippus



J F M A M J J A S O N D



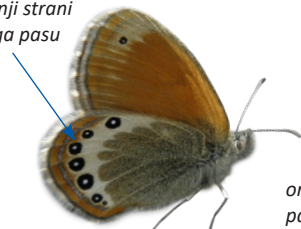
očesca zunaj
belega pasu;
zgornje
očesce na
bazalni strani
belega pasu

grmiščni okarček
Coenonympha arcania



J F M A M J J A S O N D

vsa očesca na
zunanji strani
belega pasu



gorski okarček
Coenonympha gardetta



J F M A M J J A S O N D



oranžni
pas ozek

travniški okarček
Coenonympha glycerion



J F M A M J J A S O N D



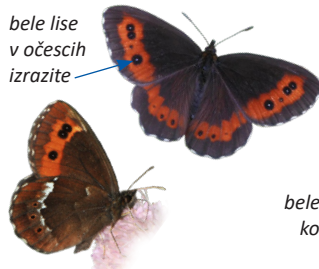
samo na
Nanosu

črni rjavček
Erebia melas



J F M A M J J A S O N D

bele lise
v očescih
izrazite



belololisi rjavček
Erebia ligea



J F M A M J J A S O N D

bele lise v očescih
komaj opazne



svetlolisi rjavček
Erebia euryale



J F M A M J J A S O N D

majhne
bele
pike



gozdni rjavček
Erebia aethiops



J F M A M J J A S O N D



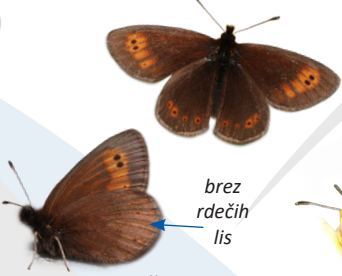
svetle lise
neenakomernih
oblik

rumenolisi rjavček
Erebia manto



J	F	M	A	M	J	J	A	S	O	N	D
---	---	---	---	---	---	---	---	---	---	---	---

♂ samo v Triglavskem
pogorju ♀



brez
rdečih
lis

gorski rjavček
Erebia ephiphron



J	F	M	A	M	J	J	A	S	O	N	D
---	---	---	---	---	---	---	---	---	---	---	---



rdeče lise
brez očesc

planinski rjavček
Erebia pharte



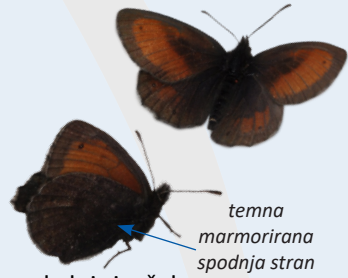
J	F	M	A	M	J	J	A	S	O	N	D
---	---	---	---	---	---	---	---	---	---	---	---



triglavski rjavček
Erebia pluto



J	F	M	A	M	J	J	A	S	O	N	D
---	---	---	---	---	---	---	---	---	---	---	---



temna
marmorirana
spodnja stran

skalni rjavček
Erebia gorge



J	F	M	A	M	J	J	A	S	O	N	D
---	---	---	---	---	---	---	---	---	---	---	---

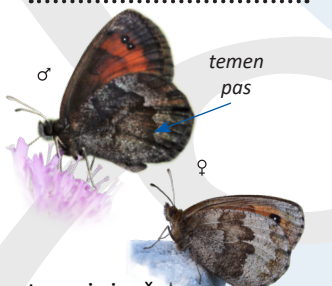


prisoten
kovinski
odblesek

lorkovičev rjavček
Erebia calcaria



J	F	M	A	M	J	J	A	S	O	N	D
---	---	---	---	---	---	---	---	---	---	---	---



temen
pas

temni rjavček
Erebia pronoe



J	F	M	A	M	J	J	A	S	O	N	D
---	---	---	---	---	---	---	---	---	---	---	---

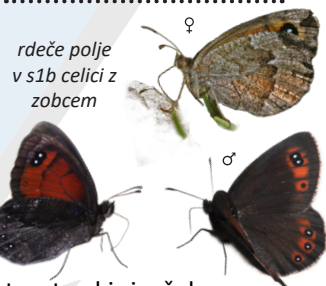


rdeče polje v s1b
celici brez zobca

štajerski rjavček
Erebia stiria



J	F	M	A	M	J	J	A	S	O	N	D
---	---	---	---	---	---	---	---	---	---	---	---

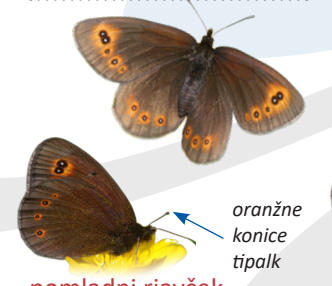


rdeče polje
v s1b celici z
zobcem

trentarski rjavček
Erebia styx



J	F	M	A	M	J	J	A	S	O	N	D
---	---	---	---	---	---	---	---	---	---	---	---



oranžne
konice
tipalk

pomladni rjavček
Erebia medusa



J	F	M	A	M	J	J	A	S	O	N	D
---	---	---	---	---	---	---	---	---	---	---	---

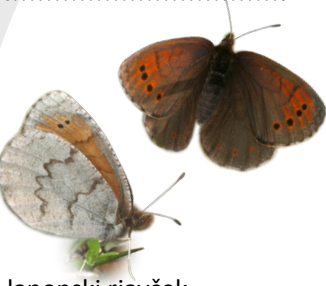


črne konice
tipalk

svetlooki rjavček
Erebia oeme



J	F	M	A	M	J	J	A	S	O	N	D
---	---	---	---	---	---	---	---	---	---	---	---



laponski rjavček
Erebia pandrose



J	F	M	A	M	J	J	A	S	O	N	D
---	---	---	---	---	---	---	---	---	---	---	---

Na pobudo dveh evropskih organizacij (Butterfly Conservation Europe in UK Centre for Ecology and Hydrology (UK-CEH)) se je oblikoval **Evropski monitoring dnevnih metuljev** (eBMS). Vse države, ki sodelujejo pri tem spremljanju stanja populacij dnevnih metuljev, letno delijo podatke pridobljene z metodo transektnega štetja. Ti podatki služijo izračunu populacijskih trendov evropskih vrst dnevnih metuljev in indeksa travniških vrst dnevnih metuljev, ki so strokovna podlaga za nadaljnje ukrepanje pri varstvu metuljev in njihovih življenjskih prostorov.

Za več informacij o Evropskem monitoringu dnevnih metuljev obiščite spletno stran: www.butterfly-monitoring.net. V kolikor bi se želeli pridružiti popisovanju metuljev v Sloveniji kontaktirajte Društvo za proučevanje in ohranjanje metuljev Slovenije (DPOMS): info.metulji@gmail.com, www.facebook.com/metulji. V DPOMS smo vključeni posamezniki, ki nas združuje zanimanje za metulje. Ukvarjamo se z metulji na območju Slovenije, predvsem z njihovo razširjenostjo in ekologijo ter tudi s promocijo metuljev med širšo javnostjo. Vabljeni, da se nam pridružite!

Ta terenski določevalni ključ je bil narejen v evropskem projektu SPRING (Strengthening Pollinator Recovery through Indicators and monitoring)

Avtorji: Luka Šturm (Biotehniška fakulteta, Univerza v Ljubljani), Cristina G. Sevilleja (Dutch Butterfly Conservation), dr. Rudi Verovnik (Biotehniška fakulteta, Univerza v Ljubljani) in Barbara Zakšek (Center za kartografijo favne in flore).

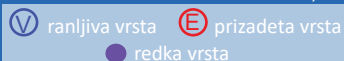
Fotografije: Luka Šturm, dr. Rudi Verovnik, Barbara Zakšek, Primož Glogovčan in Nika Kogovšek; Paolo Mazzei, Marco Bonifacino, Raniero Panfili in Daniel Morel (www.leps.it); Izabella Dziekanska, Marcin Sielezniew, Albert Vliegenthart in Chris van Swaay.

Oblikovanje: Cristina G. Sevilleja

Založnik: Društvo za proučevanje in ohranjanje metuljev Slovenije, 2023. Elektronska izdaja

eBMS - European Butterfly Monitoring Scheme

Stopnja ogroženosti (Pravilnik o uvrstitvi ogroženih rastlinskih in živalskih vrst v rdeči seznam):



Z rdečo barvo so obarvana imena metuljev, ki se pojavljajo tudi v osnovnem ključu (Dnevni metulji Slovenije 1).

Obdobje pojavljanja odraslih metuljev po mesecih:



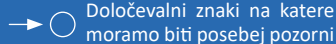
Velikosti metuljev:



Spol:



Simboli:



Kataložni zapis o publikaciji (CIP) pripravili v
Narodni in univerzitetni knjižnici v Ljubljani
COBISS.SI-ID 139584771 ISBN 978-961-95310-2-0 (PDF)



Mestna občina Ljubljana

