



20 TRGOVINA IN DRUGE STORITVENE DEJAVNOSTI
DISTRIBUTIVE TRADE AND OTHER SERVICE ACTIVITIES

št./No 40

INDEKSI PRIHODKA V STORITVENIH DEJAVNOSTIH, SLOVENIJA, JULIJ 2004

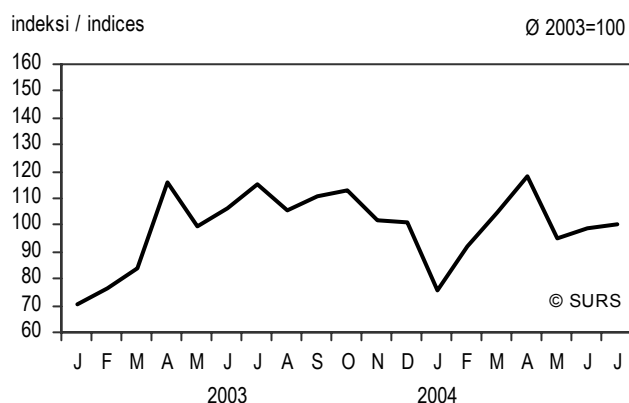
TURNOVER INDICES FOR SERVICE ACTIVITIES, SLOVENIA, JULY 2004

ZAČASNI PODATKI
PROVISIONAL DATA

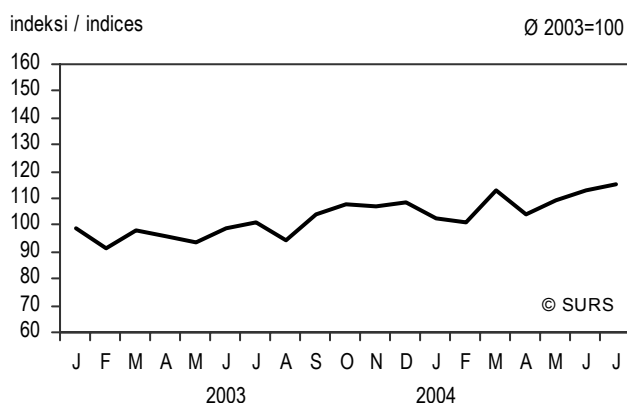
- ▶ Prihodek od prodaje je bil v juliju 2004 v primerjavi s prihodkom v juniju 2004 nižji v večini opazovanih storitvenih dejavnostih, najnižji je bil v skupini oglaševanje (indeks 73,5). V tej primerjavi se je prihodek od prodaje povečal le v skupini storitve potovalnih in turističnih organizacij (indeks 108,8) ter v skupini pošta in telekomunikacije (indeks 102).
- ▶ Glede na prihodek od prodaje v istem mesecu predhodnega leta je bil letošnji julijski prihodek večinoma višji, nižji je bil le v skupini pomožne prometne dejavnosti (indeks 79,3) in v skupini podjetniško svetovanje (indeks 94,9); najbolj pa se je povečal v skupinah čiščenje objektov in opreme (indeks 130,3), obdelava podatkov, podatkovne baze in s tem povezane dejavnosti (indeks 126,7) ter v skupini tehnično svetovanje (indeks 126,5).
- ▶ V prvih sedmih mesecih 2004 so v večini opazovanih storitvenih dejavnostih ustvarili več prihodka kot v enakem obdobju lanskega leta. V tej primerjavi se je prihodek od prodaje znižal le v skupini pomožne prometne dejavnosti (indeks 97,6).
- ▶ Prihodek od prodaje v juliju 2004 je bil v opazovanih storitvenih dejavnostih večinoma višji od lanskega povprečja; nižji je bil le v skupini pomožne prometne dejavnosti (indeks 78,9) in v skupini oglaševanje (indeks 91,9); najbolj pa se je povečal v skupini storitve potovalnih in turističnih organizacij (indeks 165,2).
- ▶ In comparison with June 2004, in July 2004 turnover from sale of services mostly decreased in observed services; the most in advertising (index 73.5). It increased only in activities of travel agencies (index 108.8) and in post and telecommunications (index 102).
- ▶ In comparison with July 2003, in July 2004 turnover from sale of services decreased only in supporting and auxiliary transport activities (index 79.3) and in enterprise consultancy (index 94.9). It increased the most in industrial cleaning (130.3), in computer and related activities (index 126.7) and in technical consultancy (index 126.5).
- ▶ In the first seven months of 2004, more turnover from sale of services was created in most groups of activities than in the same period of 2003. It decreased only in supporting and auxiliary transport activities (index 97.6).
- ▶ Compared to last year's average, in July 2004 turnover from sale of services mostly increased in observed services, of which the most in activities of travel agencies (index 165.2). It decreased only in supporting and auxiliary transport activities (index 78.9) and in advertising (index 91.9).

Slika 1: Indeksi nominalnega prihodka v storitvenih dejavnostih po skupinah dejavnosti, Slovenija, januar 2003–julij 2004

Chart 1: Turnover value indices for service activities, without value added tax, by groups of activities, Slovenia, January 2003–July 2004

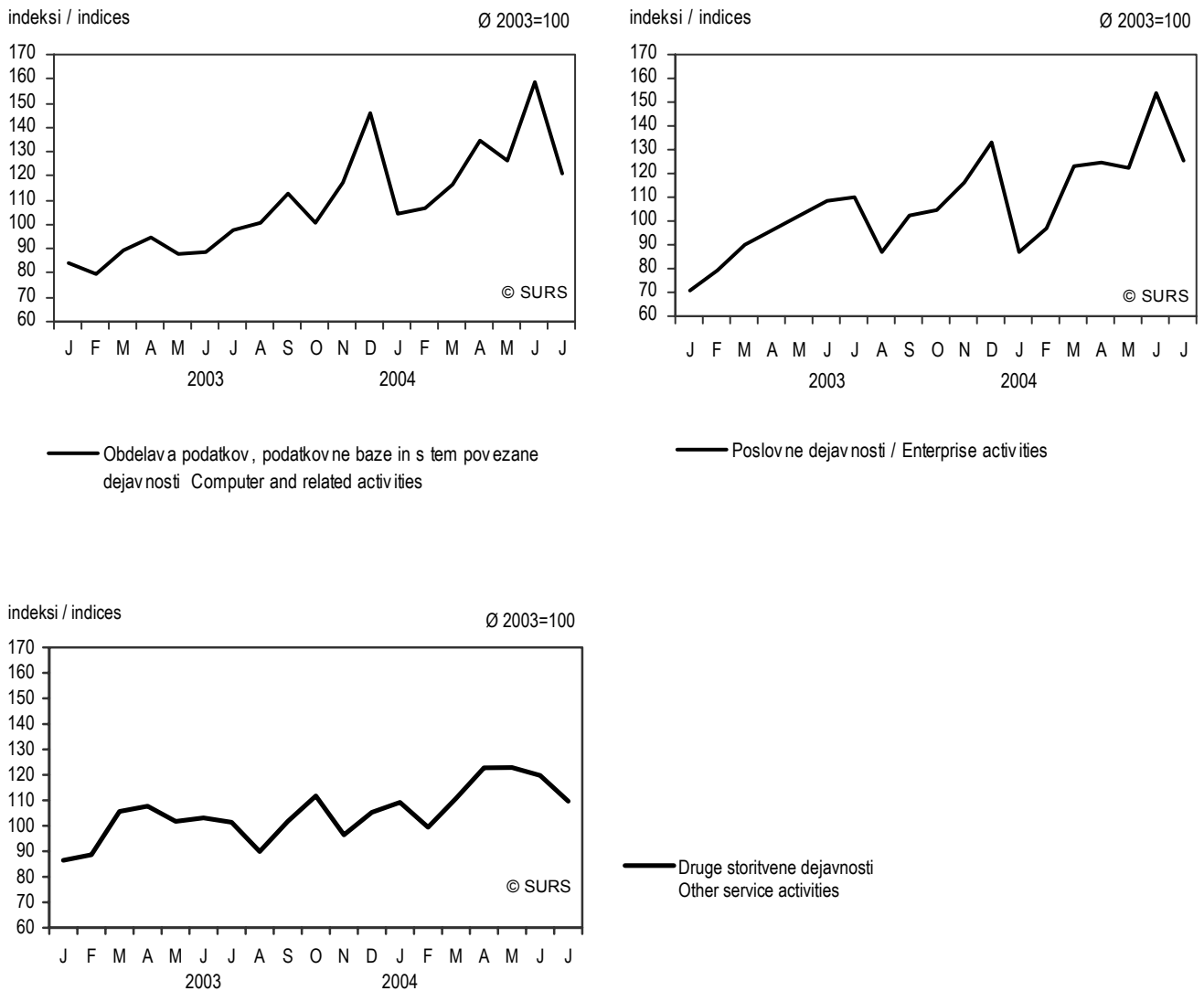


— Pomožne prometne dejavnosti; storitve potovalnih in turističnih organizacij / Supporting and auxiliary transport activities; activities of travel agencies



— Pošta in telekomunikacije / Post and telecommunications

Slika 1: Indeksi nominalnega prihodka v storitvenih dejavnostih po skupinah dejavnosti, Slovenija, januar 2003-julij 2004 (nadaljevanje)
Chart 1: Turnover value indices for service activities, without value added tax, by groups of activities, Slovenia, January 2003-July 2004 (continued)



1. Indeksi nominalnega prihodka v storitvenih dejavnostih po skupinah dejavnosti, Slovenija, julij 2004
Turnover value indices for service activities, without value added tax, by groups of activities, Slovenia, July 2004

	VII 04 VII 03	VII 04 VI 04	I-VII 04 I-VII 03	VII 04 Ø 03	
Pomožne prometne dejavnosti; storitve potovalnih in turističnih organizacij	87,5	101,2	101,9	100,0	Supporting and auxiliary transport activities; activities of travel agencies
Pomožne prometne dejavnosti	79,3	96,7	97,6	78,9	Supporting and auxiliary transport activities
Storitve potovalnih in turističnih organizacij	103,3	108,8	115,0	165,2	Activities of travel agencies
Pošta in telekomunikacije	114,0	102,0	111,5	115,0	Post and telecommunications
Obdelava podatkov, podatkovne baze in s tem povezane dejavnosti	126,7	76,2	138,6	121,1	Computer and related activities
Poslovne dejavnosti	115,9	81,4	126,3	125,4	Enterprise activities
Podjetniško svetovanje	94,9	83,8	110,8	104,0	Enterprise consultancy
Tehnično svetovanje	126,5	77,5	136,3	144,1	Technical consultancy
Oglaševanje	107,3	73,5	111,3	91,9	Advertising
Druge poslovne dejavnosti	111,4	96,2	129,5	123,0	Other enterprise activities
Čiščenje objektov in opreme	130,3	95,0	128,0	126,9	Industrial cleaning
Druge storitvene dejavnosti	110,6	91,6	113,5	109,7	Other service activities

2. Indeksi števila delovno aktivnih oseb, ki delajo v podjetjih v storitvenih dejavnostih, po skupinah dejavnosti, Slovenija, julij 2004
Indices of the number of persons in employment working in the enterprises in service activities, by groups of activities, Slovenia, July 2004

	VII 04 VII 03	VII 04 VI 04	I-VII 04 I-VII 03	VII 04 Ø 03	
Pomožne prometne dejavnosti; storitve potovalnih in turističnih organizacij	90,1	99,5	92,3	90,7	Supporting and auxiliary transport activities; activities of travel agencies
Pomožne prometne dejavnosti	89,1	99,4	91,7	89,7	Supporting and auxiliary transport activities
Storitve potovalnih in turističnih organizacij	96,2	100,2	96,1	97,5	Activities of travel agencies
Pošta in telekomunikacije	102,1	100,3	101,5	101,2	Post and telecommunications
Obdelava podatkov, podatkovne baze in s tem povezane dejavnosti	106,5	100,4	105,6	106,0	Computer and related activities
Poslovne dejavnosti	105,0	100,2	103,3	104,5	Enterprise activities
Podjetniško svetovanje	104,4	100,3	102,5	103,0	Enterprise consultancy
Tehnično svetovanje	98,2	100,1	97,6	98,2	Technical consultancy
Oglaševanje	105,6	100,2	105,5	106,1	Advertising
Druge poslovne dejavnosti	109,6	100,4	108,2	110,2	Other enterprise activities
Čiščenje objektov in opreme	111,5	99,8	107,9	110,5	Industrial cleaning
Druge storitvene dejavnosti	99,9	100,0	99,2	100,1	Other service activities

Vir: SRDAP, statistični register delovno aktivnega prebivalstva / Source: SRE, Statistical Register of Employment

METODOLOŠKA POJASNILA

Namen raziskovanja

je mesečno statistično merjenje gibanja prihodka v storitvenih dejavnostih. Dopolnjujemo ga s podatki o gibanju števila oseb, ki so v teh dejavnostih delovno aktivne.

Enote opazovanja

so podjetja, ki so po svoji glavni dejavnosti uvrščena v dejavnosti: promet, skladiščenje, zveze, poslovne storitve in druge storitvene dejavnosti.

Vir podatkov

Podatke o prihodu zbiramo s statističnim raziskovanjem Mesečno poročilo o poslovnih in drugih storitvenih dejavnostih (STOR/M). Vir podatkov zanj je računovodska dokumentacija podjetij, izjemoma tudi njihova ocena.

Vir podatkov o delovno aktivnih osebah je Statistični register delovno aktivnega prebivalstva (SRDAP), ki ga vodi Statistični urad RS. Vzpostavljen je bil na osnovi popisa zaposlenih oseb leta 1986. Dopolnjuje in popravlja (ažurira) se s podatki iz obrazcev M, to je Prijava podatkov za uvedbo in vodenje matične evidence pokojninskega in invalidskega zavarovanja in zdravstvenega zavarovanja, evidence o sklenitvi delovnega razmerja (M-1, M-2, M-1a, M-3, M-3a, M-DČ).

Zajetje

Vzorčna podjetja, ta zastopajo celotno populacijo podjetij, smo izbrali izmed 12 057 potencialnih enot. Te enote smo opredelili tako, da smo Poslovni register Slovenije dopolnili z informacijami iz drugih virov (zaključni računi AJPES, Statistični register delovno aktivnega prebivalstva SRDAP).

Vzorec

je razdeljen na stratum, in sicer po dejavnostih in po velikostnih razredih podjetij. V razvrstitvi podjetij po dejavnosti je upoštevana njihova glavna

METHODOLOGICAL EXPLANATIONS

Purpose of the survey

is monthly statistical observation of trends in turnover without VAT for service activities. It is completed with the number of persons in employment working in the enterprises in service activities.

Observation units

are the enterprises whose principal activity is classified in transport, storage, communication, business activities and other service activities.

Data source

We collect data on turnover with the statistical survey STOR/M (Monthly Report on Business and Other Service Activities). The source of data is accounting documentation of enterprises and only exceptionally their estimates.

The data source on persons in employment is the Statistical Register of Employment, which is kept by the Slovenian Statistical Office. It was set up on the basis of the 1986 Census of persons in paid employment. The data on employment are obtained from monthly M-forms, i.e. registration of data for the introduction and keeping of the central record of pension and disability insurance, health insurance and employment (M-1, M-2, M-1a, M-3, M-3a, M-DČ).

Coverage

The sample is chosen among 12,057 potential units of observation (enterprises), which represent the whole population. We defined these units by supplementing the Business Register of Slovenia with information from other sources: annual accounting statements of the Agency of the Republic of Slovenia for Public Legal Records and Related Services and the Statistical Register of Employment.

Sample

is divided into strata by activities and size of enterprises. The classification of enterprises by activity takes into consideration their main activity (SKD),



dejavnost (SKD), to je praviloma tista dejavnost, s katero podjetje ustvari pretežni del dodane vrednosti. Glede na velikostne razrede so podjetja lahko velika, srednje velika in mala. V vzorec so vključena vsa velika in srednje velika podjetja, stratumsko razporeditev malih podjetij pa je določena glede na njihov prihodek in število zaposlenih. V vzorec je bilo izbranih 1 475 podjetij.

Zaradi načina oblikovanja vzorca in zaradi reorganizacij ali drugih sprememb v poslovanju nekatera podjetja ne ustrezajo zahtevam raziskovanja (še niso začela poslovati ali so prenehala poslovati, so v stečajju, ne opravljajo opazovane dejavnosti ...). Vsa ta podjetja štejemo za neustrezna. Razmerje med številom ustreznih in številom v vzorec zajetih enot je izraženo s **stopnjo ustreznosti**. Ker se število neustreznih enot iz meseca v mesec lahko spreminja, se spreminja tudi stopnja ustreznosti. Tudi število podjetij, ki odgovorijo na vprašalnik, niha iz meseca v mesec. Tista podjetja, ki ne odgovorijo, čeprav so ustrezna, štejemo za manjkajoči odgovor. Razmerje med številom prejetih odgovorov in številom ustreznih enot v vzorcu je izraženo s **stopnjo odgovorov**. Tako stopnja odgovorov v juliju 2004 obsega 96 %, stopnja ustreznosti pa je 92,3 %.

V tabeli o delovno aktivnih osebah so upoštevane vse, v opazovanih dejavnostih (promet, skladiščenje, zveze, poslovne storitve in druge storitvene dejavnosti) zaposlene in samozaposlene osebe, ki so obvezno pokojninsko in zdravstveno zavarovane ali so v delovnem razmerju na območju RS.

Način zbiranja podatkov

Raziskovanje izvajamo mesečno po poštni metodi.

Definicije in pojasnila

Prihodek je skupni znesek, ki ga celotno podjetje obračuna za opravljene storitve v enem mesecu. Vsebuje vse stroške in obremenitve, vezane na kupca, ne zajema pa davka na dodano vrednost (DDV), morebitne prodaje osnovnih sredstev, prihodkov od financiranja in drugih izrednih dohodkov. Prodaja na posojilo se šteje v mesec fakturiranja. Prihodek je prikazan po tekočih cenah v času izstavitve računa.

Podatki za tekoči mesec so začasni in jih v naslednjih mesecih za nazaj še dopolnjujemo.

Delovno aktivno prebivalstvo, vključeno v SRDAP, so zaposlene in samozaposlene osebe, ki so obvezno pokojninsko in zdravstveno zavarovane ali so v delovnem razmerju na območju Republike Slovenije v starosti od 15 let do upokojitve.

Delovno razmerje je lahko sklenjeno za določen ali nedoločen čas, s polnim delovnim časom ali z delovnim časom krajšim od polnega.

K delovno aktivnemu prebivalstvu sodijo:

- osebe, ki so v delovnem razmerju (zaposlene osebe): pri podjetju, družbi, zavodu, drugi organizaciji; pri podružnicah tujih podjetij; izvoljeni ali imenovani nosilci javne ali družbene funkcije; matere z otrokom, ki delajo po posebnih predpisih; lastniki podjetij, ki jih osebno vodijo in niso zavarovani iz drugega naslova; od 1. 1. 1999 osebe, udeležene v javnih delih; k zaposlenim osebam ne štejemo oseb, ki delajo v teh podjetjih, družbah in organizacijah po pogodbi o delu ali po avtorski pogodbi, in državljanov Republike Slovenije s stalno zaposlitvijo v slovenskih predstavništvih, gradbiščih ipd. v tujini;
- osebe, ki so v delovnem razmerju (zaposlene osebe): pri osebah, ki opravljajo gospodarsko ali pridobitno dejavnost; pri osebah, ki opravljajo poklicno dejavnost kot edini ali glavni poklic; pri fizičnih osebah, ki uporabljajo dopolnilno delo drugih ljudi;
- samozaposlene osebe: osebe, ki opravljajo gospodarsko ali pridobitno dejavnost (samostojni podjetniki posamezniki); osebe, ki

which is the one having the greatest share in the enterprise's value added. Enterprises are classified by size into large, medium-sized and small ones. All large and medium-sized enterprises are included in the sample, while in small enterprises the stratum allocation depends on their income and the number of employees. There were 1,475 enterprises selected in the sample.

Due to the method of creating the sample and due to reorganisation and other changes in operation, some enterprises do not meet survey requirements (have not started to operate, stopped their operations, are bankrupt, are not involved in the observed activity, etc.). All these enterprises are labelled ineligible. The number of eligible units in the total number of units is the **eligibility rate**. The eligibility rate can change between months because of the changes in the number of ineligible units. The number of enterprises that answer the questionnaire also changes between months. Those enterprises that do not respond are labelled non-response. The number of received responses in the total number of eligible units in the sample is the **response rate**. The response rate for July 2004 was 96% and the eligibility rate was 92.3%.

The table on persons in employment covers all persons in paid employment in activities observed (transport, storage, communication, business activities and other service activities) and self-employed persons who have compulsory pension and health insurance or are employed on the territory of the Republic of Slovenia.

Method of data collection

The survey is carried out monthly by mail.

Definitions and explanations

Turnover without VAT is the total amount that the enterprises settled for performed services in the month. It includes all costs and charges linked to the buyer and excludes the value-added tax, possible sale of fixed assets, financial income and other outstanding income. The sale for loan is registered in the month of invoicing. The turnover is shown at current prices of the month of invoicing.

Data for the current month are provisional and will be supplemented in the following months.

Persons in employment in the Statistical Register of Employment are persons in paid employment and self-employed persons who have compulsory pension and health insurance or are employed on the territory of the Republic of Slovenia and are at least 15 years old and not retired.

Employment can be permanent or temporary, full time or part time.

Persons in employment are:

- persons in paid employment in enterprises, companies, institutions and other organisations or in subsidiaries of foreign enterprises, elected or appointed holders of public functions, mothers with children working under special regulations, owners of enterprises who run them personally and are not insured otherwise, and since 1 January 1999 people performing public works; persons in paid employment are not persons working in enterprises, companies and organisations via contracts for work and citizens of the Republic of Slovenia permanently employed in Slovene embassies, on construction sites, etc., abroad;
- persons in paid employment at self-employed persons, at own account workers performing their activity as the only or principal occupation, and at natural persons making use of supplementary work of other people;
- self-employed persons: persons performing economic or gainful activity (individual private entrepreneurs) and own account workers

opravljajo poklicno dejavnost kot edini ali glavni poklic (npr. samostojni raziskovalci).

Poročevalski datum, tj. datum, na katerega se nanašajo podatki iz SRDAP, je zadnji dan v poročevalskem (referenčnem) mesecu. Povprečje leta je dvanajstina seštevka podatkov vseh dvanajstih mesecev leta.

Za podrobnejša pojasnila v zvezi s podatki o delovno aktivnih osebah se lahko obrnete na Oddelek za statistiko dela Statističnega urada RS.

Obdelava podatkov

Podjetjem, ki na vprašalnik ne odgovorijo, podatke pripišemo (imputiramo) glede na njihove registrske podatke o prihodku ter glede na porezno povprečno razmerje med prihodkom v tekočem in prejšnjem mesecu tistih podjetij v isti stratumski celici, ki so odgovorila. Podatki so uteženi zaradi verjetnosti izbora, uteži pa so nato še popravljene glede na razmerje rojstev in smrti v populaciji.

Rezultate objavljamo v obliki indeksov nominalnih vrednosti, ki zaradi prekratke dolžine serije niso obdelani glede na sezono in število delovnih dni. Indeksi so objavljeni na ravni sestavljenih skupin dejavnosti, za katere so podatki še reprezentančni.

Storitvene dejavnosti po skupinah in njim pripadajoče dejavnosti SKD

Skupine storitvenih dejavnosti	Šifra SKD	Raven dejavnosti (oddelek, skupina, razred)
pomožne prometne dejavnosti; storitve potovalnih in turističnih organizacij	63.	pomožne prometne dejavnosti; dejavnost potovalnih in turističnih organizacij
pomožne prometne dejavnosti	63.1, 63.2, 63.4	prekladanje, skladiščenje druge pomožne dejavnosti v prometu dejavnosti drugih prometnih agencij
storitve potovalnih in turističnih organizacij	63.3	dejavnost potovalnih agencij in organizatorjev potovanj; s turizmom povezane dejavnosti
pošta in telekomunikacije	64.	pošta in telekomunikacije
obdelava podatkov, podatkovne baze in s tem povezane dejavnosti	72.	obdelava podatkov, podatkovne baze in s tem povezane dejavnosti
poslovne dejavnosti	74. brez 74.15	druge poslovne dejavnosti
podjetniško svetovanje	74.11, 74.12, 74.13, 74.14	pravno svetovanje računovodske, knjigovodske in revizijske dejavnosti, davčno svetovanje raziskovanje trga in javnega mnenja podjetniško in poslovno svetovanje
tehnično svetovanje	74.2, 74.3	prostorsko načrtovanje, projektiranje in tehnično svetovanje tehnično preizkušanje in analiziranje
oglaševanje	74.4	oglaševanje
druge poslovne dejavnosti	74.5, 74.6, 74.8	dejavnost posredovanja in zaposlovanja delovne sile poizvedovalne dejavnosti in varovanje raznovrstne poslovne dejavnosti
čiščenje objektov in opreme	74.7	čiščenje objektov in opreme
druge storitvene dejavnosti	93.	druge storitvene dejavnosti

performing their activity as the only or principal occupation (e.g. independent researchers).

The reference date that the data from the Statistical Register of Employment refer to is the last day of the observed month. The average of the year is one twelfth of the sum of the twelve months of the year.

More detailed explanations on persons in employment are available at the Labour Statistics Department of our Statistical Office.

Data processing

We impute data for enterprises that did not answer the questionnaire taking into account their register data on turnover in view of the levelled average ratio between the turnover in the current and the previous month of enterprises in the same stratum that answered the questionnaire. Data are weighted because of probability of selection and weights are corrected for the ratio between dead and new-born units in the population.

Results are published as value indices that are not seasonally and working day adjusted due to insufficiently long time-series. Indices are published at the level of aggregates for which the data are still representative.

Activities of the Standard Classification of Activities (SKD) to which the published data relate

Groups of service activities	SKD code	Activity level (division, group, class)
supporting and auxiliary transport activities; activities of travel agencies	63.	supporting and auxiliary transport activities; activities of travel agencies
supporting and auxiliary transport activities	63.1, 63.2, 63.4	cargo handling and storage other supporting transport activities activities of other transport agencies
activities of travel agencies	63.3	activities of travel agencies & tour operators; tourist assistance nec.
post and telecommunications	64.	post and telecommunications
computer and related activities	72.	computer and related activities
enterprise activities	74. excl. 74.15	other business activities
enterprise consultancy	74.11, 74.12, 74.13, 74.14	legal activities accounting, book-keeping and auditing activities; tax consultancy market research and public opinion polling business and management consultancy activities
technical consultancy	74.2, 74.3	architectural & engineering activities & related technical consultancy technical testing and analysis
advertising	74.4	advertising
other enterprise activities	74.5, 74.6, 74.8	labour recruitment and provision of personnel investigation and security activities miscellaneous business activities not elsewhere classified
industrial cleaning	74.7	industrial cleaning
other service activities	93.	other service activities

Objavljanje

Mesečno:

- Prva statistična objava. Trgovina in druge storitvene dejavnosti
- Statistične informacije. Trgovina in druge storitvene dejavnosti. Indeksi prihodka v storitvenih dejavnostih
- Mesečni statistični pregled Republike Slovenije

Publishing

Monthly:

- First Release. Distributive trade and other service activities
- Rapid Reports. Distributive trade and other service activities. Turnover indices for service activities
- Monthly Statistical Review of the Republic of Slovenia

Sestavila / Prepared by: Mirjana Novak

Izdaja, založba in tisk Statistični urad Republike Slovenije, Ljubljana, Vožarski pot 12 - **Uporaba in objava podatkov dovoljena le z navedbo vira** - Odgovarja generalna direktorica mag. Irena Križman - Urednica zbirke Statistične informacije Marina Urbas - Slovensko besedilo jezikovno uredila Ivanka Zobec - Angleško besedilo jezikovno uredil Boris Panič - Naklada 115 izvodov - ISSN zbirke Statistične informacije 1408-192X - ISSN podzbirke Trgovina in druge storitvene dejavnosti 1408-9327 - Informacije daje Informacijsko središče, tel.: (01) 241 51 04 - El. pošta: info.stat@gov.si - <http://www.stat.si>.

Edited, published and printed by the Statistical Office of the Republic of Slovenia, Ljubljana, Vožarski pot 12 - **These data can be used provided the source is acknowledged** - Director-General Irena Križman - Rapid Reports editor Marina Urbas - Slovene language editor Ivanka Zobec - English language editor Boris Panič - Total print run 115 copies - ISSN of Rapid Reports 1408-192X - ISSN of subcollection Distributive trade and other service activities 1408-9327 - Information is given by the Information Centre of the Statistical Office of the Republic of Slovenia, tel.: +386 1 241 51 04 - E-mail: info.stat@gov.si - <http://www.stat.si>.