



Complete experiments in pseudoscalar meson photoproduction

Yannick Wunderlich

Helmholtz-Institut für Strahlen- und Kernphysik, Universität Bonn, Nussallee 14-16,
53115 Bonn, Germany

Abstract. The problem of extracting photoproduction amplitudes uniquely from so called complete experiments is discussed. This problem can be considered either for the extraction of full production amplitudes, or for the determination of multipoles. Both cases are treated briefly. Preliminary results for the fitting of multipoles, as well as the determination of their error, from recent polarization measurements in the Δ -region are described in more detail.

1 Introduction to the formalism

For the photoproduction of a single pseudoscalar mesons, i.e. $\gamma N \rightarrow \mathcal{P}B$, it can be shown that the most general expression for the reaction amplitude, with spin and momentum variables specified in the center of mass frame (CMS), reads (cf. the work by CGLN [1])

$$F_{\text{CGLN}} = i\boldsymbol{\sigma} \cdot \hat{\boldsymbol{\epsilon}} F_1 + \boldsymbol{\sigma} \cdot \hat{\boldsymbol{q}} \boldsymbol{\sigma} \cdot \hat{\boldsymbol{k}} \times \hat{\boldsymbol{\epsilon}} F_2 + i\boldsymbol{\sigma} \cdot \hat{\boldsymbol{k}} \hat{\boldsymbol{q}} \cdot \hat{\boldsymbol{\epsilon}} F_3 + i\boldsymbol{\sigma} \cdot \hat{\boldsymbol{q}} \hat{\boldsymbol{q}} \cdot \hat{\boldsymbol{\epsilon}} F_4. \quad (1)$$

Each spin-momentum structure in this expansion is multiplied by a complex function depending on the total energy W and meson scattering angle θ in the CMS. The 4 functions $\{F_i(W, \theta); i = 1, \dots, 4\}$ are called CGLN-amplitudes and contain all information on the dynamics of the reaction.

Since all particles in the reaction except for the meson \mathcal{P} have spin, the preparation of the spin degrees of freedom in the initial state as well as the (generally more difficult) measurement of the polarization of the recoil baryon B facilitate the experimental determination of 16 polarization observables, summarized in Table 1. All observables are definable as asymmetries among different polarization states (see [2]). They contain the unpolarized differential cross section σ_0 , the three single spin observables $\{\Sigma, T, P\}$ (corresponding to beam, target and recoil polarization), as well as twelve double polarization observables which are divisible into the distinct classes of beam-target (BT), beam-recoil (BR) and target-recoil (TR) observables.

Once the equations connecting the measurable observables to the model independent production amplitudes are worked out (reference [2] contains instructions on how to do this), it becomes apparent that all of these relations can be

Table 1. The 16 polarization observables accessible in pseudoscalar meson photoproduction (for a more elaborate version of this Table, cf. [2]).

Beam	Target			Recoil			Target + Recoil			
	-	-	-	x'	y'	z'	x'	x'	z'	z'
	x	y	z	-	-	-	x	z	x	z
unpolarized	σ_0	T			P		$T_{x'}$	$L_{x'}$	$T_{z'}$	$L_{z'}$
linearly pol.	Σ	H P G		$O_{x'}$	T	$O_{z'}$				
circularly pol.		F E		$C_{x'}$		$C_{z'}$				

summarized by the relation

$$\check{\Omega}^\alpha = \frac{q}{k} \frac{1}{2} \sum_{i,j=1}^4 F_i^* \hat{A}_{ij}^\alpha F_j = \frac{q}{k} \frac{1}{2} \langle F | \hat{A}^\alpha | F \rangle, \quad \alpha = 1, \dots, 16. \quad (2)$$

The 16 real profile functions $\check{\Omega}^\alpha$, connected to the polarization observables via $\check{\Omega}^\alpha = \sigma_0 \Omega^\alpha$, are bilinear hermitean forms in the CGLN amplitudes and can be represented by the generally complex hermitean matrices \hat{A}^α (cf. [5] for a listing of those).

A change of the basis of spin quantization for the photoproduction reaction allows for the definition of different systems of spin amplitudes. Helicity amplitudes $H_i(W, \theta)$ or transversity amplitudes $b_i(W, \theta)$ are possible choices (cf. [4]). The different kinds of amplitudes are all related among each other in a linear and invertible way. Therefore, they can be seen as fully equivalent regarding their information content. The expressions for the polarization observables in the aforementioned different systems of spin amplitudes retain the mathematical structure of equation (2), while the observables are now represented by different matrices

$$\check{\Omega}^\alpha = \frac{q}{k} \frac{1}{2} \langle H | \Gamma^\alpha | H \rangle = \frac{q}{k} \frac{1}{2} \langle b | \tilde{\Gamma}^\alpha | b \rangle. \quad (3)$$

The Γ^α (or $\tilde{\Gamma}^\alpha$ in case of transversity amplitudes) are a set of 16 hermitean unitary Dirac Γ -matrices (cf. [4,5]). They have useful properties, the exploitation of which facilitates the identification of complete experiments.

2 Complete experiments for spin amplitudes

Since photoproduction allows access to 16 polarization observables but needs 4 complex amplitudes for a model independent description (constituting just 8 real numbers), the fact can be anticipated that measuring all observables would mean an overdetermination for the problem of extracting amplitudes.

This issue has triggered investigations on so called complete experiments (cf. [3,4]), which are subsets of a minimum number of observables that allow for

a unique extraction of the amplitudes. Here one generally means unique only up to an overall phase, since equations (2, 3) are invariant by a simultaneous rotation of all amplitudes by the same phase. Also, the complete experiment problem is first of all a precise mathematical problem disregarding measurement uncertainties.

Chiang and Tabakin have published a solution to this problem (cf. [4]) that shall be depicted here. First of all it was noted that, using the fact that the $\tilde{\Gamma}$ -matrices are an orthonormal basis of the complex 4×4 -matrices, equation (3) can be inverted in order to yield expressions for the bilinear products

$$b_i^* b_j = \frac{1}{2} \sum_{\alpha} (\tilde{\Gamma}_{ij}^{\alpha})^* \check{\Omega}^{\alpha}. \quad (4)$$

This relation allows for the determination of the moduli $|b_i|$ and relative phases ϕ_{ij}^b of the b_i and therefore fully constrains them up to an overall phase. Generalizations of equation (4) for helicity and CGLN amplitudes are possible (see [5]) but shall not be quoted here.

Another important property of the $\tilde{\Gamma}$ is that they imply quadratic relations among the observables known as the Fierz identities (see [4])

$$\check{\Omega}^{\alpha} \check{\Omega}^{\beta} = \sum_{\delta, \eta} C_{\delta\eta}^{\alpha\beta} \check{\Omega}^{\delta} \check{\Omega}^{\eta}, \quad (5)$$

where $C_{\delta\eta}^{\alpha\beta} = (1/16) \text{Tr} [\tilde{\Gamma}^{\delta} \tilde{\Gamma}^{\alpha} \tilde{\Gamma}^{\eta} \tilde{\Gamma}^{\beta}]$.

Equations (4) and (5) are all that is needed to prove that 8 carefully chosen observables suffice in order to obtain a complete experiment ([4]). Among those should be the unpolarized cross section and the three single polarization observables. The remaining quantities have to be picked from at least two different classes of double polarization observables, with no more than two of them from the same class. The word 'prove' means in this case that for all cases mentioned in reference [4], equation (5) was used to express the missing 8 observables in terms of the measured ones.

In practical investigations of photoproduction data, the goal is not to determine the full reaction amplitudes, but rather the partial waves, in this case called multipoles.

3 Complete experiments in a truncated partial wave analysis

The expansions of the full amplitudes F_i into multipoles are known (cf. eg. [2]). In case these expansions are truncated at some finite angular momentum quantum number ℓ_{\max} , an approximation that is justified for reactions with suppressed background contributions (eg. π^0 photoproduction), then the profile functions defined in equation (2) can be arranged as a finite expansion into associated Legendre polynomials

$$\check{\Omega}^{\alpha}(W, \theta) = \frac{q}{k} \sum_{k=\beta_{\alpha}}^{2\ell_{\max} + \beta_{\alpha} + \gamma_{\alpha}} (a_L)_k^{\alpha}(W) P_k^{\beta_{\alpha}}(\cos \theta), \quad (6)$$

$$(a_L)_k^{\alpha}(W) = \langle \mathcal{M}_{\ell_{\max}}(W) | (C_L)_k^{\alpha} | \mathcal{M}_{\ell_{\max}}(W) \rangle. \quad (7)$$

The parameters β_α and γ_α defining this expansion are given in Table 2 (the whole notation is according to [6]).

The real Legendre coefficients $(a_L)_k^\alpha$ are given as bilinear hermitean forms in terms of the $4\ell_{\max}$ multipoles, which are gathered in the vector $|\mathcal{M}_{\ell_{\max}}\rangle$. Therefore, the problem of multipole-extraction from a set of fitted coefficients $(a_L)_k^\alpha$ leads to a similar mathematical structure compared to the equation (2) encountered in the investigation of complete experiments in section 2. The question for such complete sets can now be asked again, but in the context of a truncated partial wave analysis (TPWA).

Table 2. The parameters defining the TPWA problem, equations (6) and (7).

Type	$\check{\Omega}^\alpha$	α	β_α	γ_α	Type	$\check{\Omega}^\alpha$	α	β_α	γ_α
S	I(θ)	1	0	0	BR	$\check{\Omega}_{x'}$	14	1	0
	$\check{\Sigma}$	4	2	-2		$\check{\Omega}_{z'}$	7	2	-1
	$\check{\Upsilon}$	10	1	-1		$\check{\Omega}_{x'}$	16	1	0
	$\check{\rho}$	12	1	-1		$\check{\Omega}_{z'}$	2	0	+1
BT	$\check{\Omega}$	3	2	-2	TR	$\check{\Upsilon}_{x'}$	6	2	-1
	$\check{\Pi}$	5	1	-1		$\check{\Upsilon}_{z'}$	13	1	0
	$\check{\Xi}$	9	0	0		$\check{\Omega}_{x'}$	8	1	0
	$\check{\Psi}$	11	1	-1		$\check{\Omega}_{z'}$	15	0	+1

It is a very interesting fact that in this case, the number of observables that is needed for completeness reduces as compared to the case with full production amplitudes. This is true at least in the mathematically precise situation, without measurement uncertainty. The algebra that is needed to prove this result was first worked out by Omelaenko [7] (for a recent and more detailed account, cf. [8]).

It is sufficient to investigate the discrete ambiguities allowed by the group S observables, i.e. $\{\sigma_0, \Sigma, \Upsilon, \rho\}$. It is then seen that the latter are invariant under one mathematical ambiguity transformation, called the 'double ambiguity', which is present in principle for all energies. There may also be additional pairs of solutions, called accidental ambiguities, depending on the numerical configuration of the Legendre coefficients. It can however be shown that those play no role for the mathematically exact case. The above mentioned double ambiguity on the other hand can be resolved by either the F or G observable, as well as every observable from the BR and TR classes. Therefore one is lead to mathematically complete sets containing just 5 observables, for example

$$\{\sigma_0, \Sigma, \Upsilon, \rho, F\}. \quad (8)$$

4 TPWA fits using the bootstrapping method

Here we will describe preliminary results of a TPWA fit to actual data comprising the set of observables (8). The observables σ_0 and Σ are taken from the works [9]

and [10]. Recent measurements of T and F were performed at MAMI [11]. For P we take the Kharkov data [12].

The fit procedure proceeds as follows, using a truncation at $\ell_{\max} = 1$ (S- and P-waves). First, Legendre coefficients are determined by fitting the angular distributions (6) to the data. The index set for the fitted observables is $\alpha_F \in \{1, 4, 10, 12, 11\}$ (cf. Table 2) in this particular case here. In the next step, we minimize the functional (up to now omitting correlations)

$$\Phi_{\mathcal{M}}(\mathcal{M}_{\ell_{\max}}) = \sum_{\alpha_F, k} \left(\frac{(\mathbf{a}_L^{\text{Fit}})^{\alpha_F}_k - \langle \mathcal{M}_{\ell_{\max}} | (\mathcal{C}_L)^{\alpha_F}_k | \mathcal{M}_{\ell_{\max}} \rangle}{\Delta(\mathbf{a}_L^{\text{Fit}})^{\alpha_F}_k} \right)^2, \quad (9)$$

using the results from the angular fit and varying the real and imaginary parts of the multipoles (the FindMinimum routine of MATHEMATICA is employed). The overall phase of the multipoles is constrained to $\text{Re}[E_{0+}] \geq 0$ and $\text{Im}[E_{0+}] = 0$, since this phase can never be obtained from a truncated fit to the data alone.

In order to exclude any kind of model dependencies, the start parameters for the fit are not taken from a prediction, but are determined randomly by using a Monte Carlo sampling of the relevant, $(8\ell_{\max} - 1) = 7$ dimensional multipole space (the space spanned by the real and imaginary parts). This sampling is simplified by the fact that the total cross section $\hat{\sigma}$, being a sum of moduli-squared of multipoles, already constrains the relevant part of the multipole space to a 6 dimensional ellipsoid.

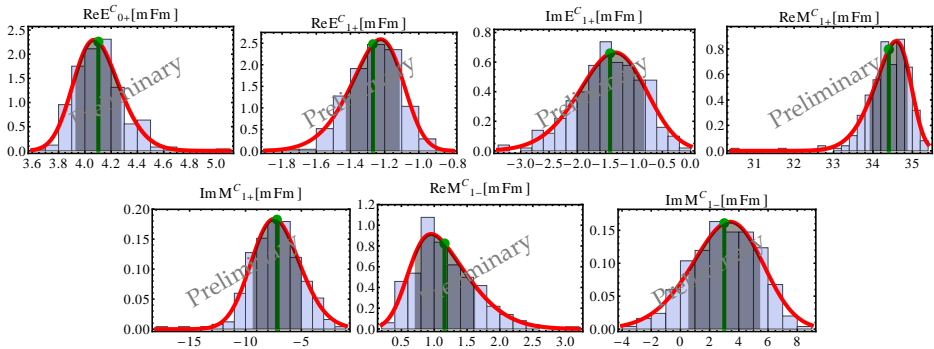


Fig. 1. Histograms resulting from the bootstrapping at $E_{\gamma}^{\text{LAB}} \approx 338 \text{ MeV}$.

The amount of $N_{\text{MC}} = 1000$ Monte Carlo start configurations was chosen. It has to be reported that using this procedure, it was possible to find a pronounced best minimum for the dataset under investigation.

In addition one would wish to have an estimate for the errors of the resulting multipoles, as well as a check whether the data allow any ambiguities caused by their finite precision. To achieve both tasks, a method known as ‘bootstrapping’ was chosen ([13]). In this approach, the data are resampled using a gaussian distribution function centered at $\mu = \check{\Omega}^{\alpha}$ having a width $\sigma = \Delta\check{\Omega}^{\alpha}$ for each datapoint. In this way, an ensemble of 250 additional datasets was generated, each

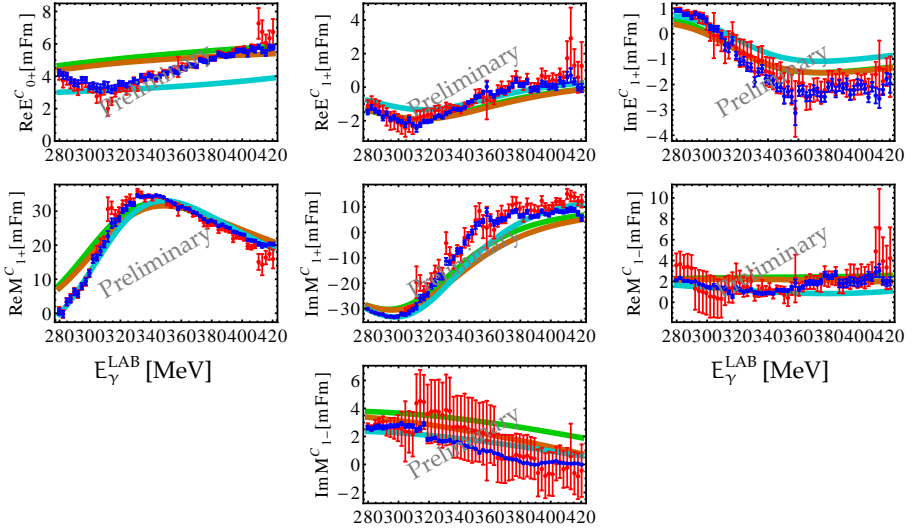


Fig. 2. Results of the bootstrapping procedure for S- and P-wave multipoles (red: Kharkov P data; blue: SAID-predictions for P). The colored model curves are for comparison taken from MAID [14] (green), SAID [15] (brown) and Bonn-Gatchina [16] (cyan).

time starting at the original datapoints. The above mentioned TPWA fit procedure was then applied to each ensemble member. If a good minimum is found in each case, one can histogram the results and extract mean and width for each parameter (cf. Figure 1).

The bootstrap did not show any indications of ambiguities allowed by the data. Therefore, the results for mean and width of the single solution found can be plotted against energy, the result of which is shown in Figure 2.

Because the errors of the Kharkov dataset are very large, additional fits were performed replacing these data by a SAID-prediction for P which has been endowed with a 5%-error at each datapoint. The results indicate that the uncertainty of the multipoles, especially for M_{1-} , is quite sensitive to this replacement (Figure 2).

5 Summary and outlook

Mathematically complete sets of observables contain a minimum number of 8 in the case of spin amplitude extraction and 5 for a TPWA. First investigations of a particularly simple fit in the Δ -region confirm the latter result.

Bootstrapping methods were proposed in order to get a good estimate for the error of the fitted multipoles. This error is seen to shrink in case more precise pseudodata for the recoil polarization observable P are introduced.

Acknowledgments

The author wishes to thank the organizers for the hospitality, as well as for providing a very relaxed and friendly atmosphere during the workshop. This work was supported by the *Deutsche Forschungsgemeinschaft* within SFB/TR16.

References

1. G. F. Chew, M. L. Goldberger, F. E. Low, and Y. Nambu, *Phys. Rev.* **106**, 1345 (1957).
2. A. M. Sandorfi, S. Hoblit, H. Kamano, T. -S. H. Lee, *J. Phys. G* **38**, 053001 (2011).
3. I. S. Barker, A. Donnachie, and J. K. Storrow, *Nucl. Phys. B* **95**, 347 (1975).
4. W.-T. Chiang and F. Tabakin, *Phys. Rev. C* **55**, 2054 (1997).
5. Y. Wunderlich, Diploma Thesis, University of Bonn (2012).
6. L. Tiator, *AIP Conf. Proc.* **1432**, 162 (2012).
7. A.S. Omelaenko, "Ambiguities of the multipole analysis of neutral-pion photoproduction from nucleons", *YaF*, Vol. **34**, 730 (1981).
8. Y. Wunderlich, R. Beck and L. Tiator, *Phys. Rev. C* **89**, 055203 (2014).
9. D. Hornidge et al., *Phys. Rev. Lett.* **111**, 062004 (2013).
10. R. Leukel and R. Beck, "Pion photoproduction results from MAMI", *Proceedings of the NSTAR 2000 Conference*, p. 14-21 (2001).
11. S. Schumann, P.B. Otte et al., *Phys. Lett. B* **750**, 252 (2015).
12. A.A. Belyaev et al., *Nucl. Phys. B* **213**, 201 (1983).
13. B. Efron, "Bootstrap methods: Another look at the jackknife", *The Annals of Statistics*, Vol. **7**, 1 (1979).
14. (MAID Partial Wave Analysis) <http://www.kph.uni-mainz.de/MAID/>
15. (SAID Partial Wave Analysis) <http://gwdac.phys.gwu.edu/>
16. (Bonn Gatchina Partial Wave Analysis) <http://pwa.hiskp.uni-bonn.de/>

Popolni eksperimenti pri fotoprodukciji psevdoskalarnih mezonov

Yannick Wunderlich

Helmholtz-Institut fuer Strahlen- und Kernphysik, Universitaet Bonn, Nussallee 14-16, 53115 Bonn, Germany

Predstavim problem, kako enolično iz vrednotiti amplitude za fotoprodukcijo iz tako imenovanih popolnih eksperimentov. Pri tem smo lahko pozorni na določanje amplitude za celotno tvorbo ali pa na določanje multipolov. Na kratko obravnavam oba primera. Podrobneje opišem preliminarne rezultate prilagajanja multipolov kakor tudi določanja njihovih napak pri nedavnih meritvah polarizacije v področju resonance Δ .

Novi spektroskopski rezultati iz laboratorija Belle

Marko Bračko

Univerza v Mariboru, Smetanova ulica 17, SI-2000 Maribor, in Institut J. Stefan, Jamova cesta 39, SI-1000 Ljubljana

V prispevku predstavimo izbrane rezultate spektroskopskih meritev, opravljenih na izmerjenih podatkih, pridobljenih z detektorjem Belle, ki je stal ob trkalniku KEKB v laboratoriju KEK v Cukubi, na Japonskem. Trkalnik je obratoval med letoma 1999 in 2010, v tem času pa je s stabilnim delovanjem pri trkih elektronov in pozitronov različnih energij postal prava "tovarna" parov mezonov B, mezonov D in še leptonov tau. Ogromne količine kakovostnih podatkov so omogočile tudi številne spektroskopske meritve. Izbor tukaj predstavljenih rezultatov ustreza zanimanju in razpravam na delavnici.

Produkcija mezonov eta in kaonov v kiralnem kvarkovem modelu

Bojan Golli

Pedagoška fakulteta, Univerza v Ljubljani in Institut J. Stefan, Ljubljana, Slovenija

Formalizem sklopljenih kanalov, ki vključuje kvazi vezana večkvarkovska stanja, uporabimo za izračun sipalnih in fotoprodukcijskih amplitud mezonov eta in kaonov. Sklopitvene konstante in oblikovne faktorje določimo v modelu oblačne vreče. Model napove znatne amplitude v parcialnih valovih P13, P33 in S11, v skladu z najnovejšimi analizami parcialnih valov skupine iz Mainza in skupine iz Bonna in Peterburga.