

ONKOLOŠKI INŠTITUT V LJUBLJANI
INSTITUTE OF ONCOLOGY, LJUBLJANA

REGISTER RAKA ZA SLOVENIJO
CANCER REGISTRY OF SLOVENIA

INCIDENCA RAKA V SLOVENIJI
CANCER INCIDENCE IN SLOVENIA

1992

POROČILO RR ŠT. 34
REPORT No. 34

LJUBLJANA 1995

ISSN 1318-2471

Uredniški odbor

Editorial Board

Rastko Golouh
Jurij Lindtner
Vera Pompe Kirn
Maja Primic Žakelj
Božena Ravnihar
Zvonimir Rudolf
Branko Zakotnik

Osebjje Registra raka

Staff of the Cancer Registry

Vera Pompe Kirn, vodja - head
Neva Volk, mlada raziskovalka - junior researcher
Jurij Modic, računalniška obdelava - EDP analysis
Sašo Celarc, slike - figures

Mojca Brus
Marjeta Bukovec
Neža Milčič
Nataša Robek
Fani Škrlec

Tone Žakelj, oblikovanje tabel in priprava za tisk - desk-top publishing

Izdal Onkološki inštitut, Ljubljana
Published by Institute of Oncology, Ljubljana, Slovenia

Direktor
Director Matjaž Zwitter

Naslov
Correspondence to

Prof. Vera Pompe Kirn, M.D., D.Sc.
Institute of Oncology
Zaloška c. 2, 61105 Ljubljana, p.p. 17, Slovenia
tel. +386 (0)61 13-24-113

Tisk
Printed by Grafis

VSEBINSKO KAZALO**CONTENTS**Stran
Page

Uvod in pojasnila	5
Introduction and Comments	8

Slike**Figures**

1. Deset najpogostejših lokacij raka po spolu - Slovenija 1992 The ten leading cancer sites by sex - Slovenia 1992	11
2. Grobe in kumulativne letne incidenčne mere raka vseh lokacij po spolu - Slovenija 1950-92 Crude and cumulative annual cancer incidence rates; all sites by sex - Slovenia 1950-92	12
3. Grobe letne incidenčne mere izbranih rakov po spolu - Slovenija 1950-92 Crude annual cancer incidence rates by selected primary sites and sex - Slovenia 1950-92	13
4. Sarkomi mehkih tkiv po histološki vrsti in starosti - Slovenija 1983-92 Soft-tissue sarcoma by histology and age - Slovenia 1983-92	14
5. Sarkomi mehkih tkiv po primarni lokaciji - Slovenija 1983-92 Soft-tissue sarcoma by primary site - Slovenia 1983-92	15
6. Sarkomi mehkih tkiv po starosti - Slovenija 1983-92 Soft-tissue sarcoma by age - Slovenia 1983-92	15
7. Opazovano in pričakovano preživetje bolnikov s sarkomi mehkih tkiv po histološki vrsti - Slovenija 1983-92 Observed and expected survival of patients with soft-tissue sarcoma by histology - Slovenia 1983-92	16
8. Opazovano in pričakovano preživetje bolnikov z rhabdomiosarkomom in sarkomom živčevja po starosti - Slovenija 1983-92 Observed and expected survival of patients with rhabdomyosarcoma and neural sarcoma by age - Slovenia 1983-92	18

Tabele**Tables**

1. Prebivalstvo Slovenije po starosti in spolu na dan 30. junija 1992 Population of Slovenia by age and sex on June 30th, 1992	19
---	----

2.	Prebivalstvo Slovenije po zdravstvenih regijah in območjih zdravstvenih domov po spolu na dan 30. junija 1992 Population of Slovenia by health regions and subregions by sex on June 30th, 1992	20
3.	Število novih primerov raka ter število in odstotek primerov, registriranih samo iz zdravniških poročil o vzroku smrti, po lokaciji in spolu - Slovenija 1992 Total number of new cancer cases, number and percentage of cases registered from death certificates only, by site and sex - Slovenia 1992	21
4.	Število novih primerov raka po lokaciji, spolu in starosti - Slovenija 1992 Number of new cancer cases by primary site, sex, and age - Slovenia 1992	25
5.	Incidenca raka na 100 000 prebivalcev po lokaciji, spolu in starosti - Slovenija 1992 Cancer incidence per 100 000 population by site, sex and age - Slovenia 1992	29
6.	Število novih primerov raka po zdravstvenih regijah in območjih zdravstvenih domov, po najpogostejših lokacijah in spolu - Slovenija 1992 Number of new cancer cases by health regions and subregions, by most frequent sites and sex - Slovenia 1992	35
7.	Število novih primerov raka, ugotovljenih v bolnišnicah, ter število in odstotek mikroskopsko potrjenih primerov, po lokaciji in spolu - Slovenija 1992 Total number of new cancer cases diagnosed in hospitals and number and percentage of microscopically confirmed cases - by site and sex - Slovenia 1992	37
8.	Število histološko (in citološko) potrjenih novih primerov raka - po histološki vrsti in lokaciji - Slovenija 1992 Number of histologically (and cytologically) confirmed new cancer cases by histologic type and site - Slovenia 1992	41
9.	Število primerov ne-Hodgkinovih limfomov po lokaciji, spolu in starosti - Slovenija 1992 Total number of non-Hodgkin's malignant lymphomas by site, sex, and age - Slovenia 1992	47
10.	Število novih primerov raka po bolnišnicah ugotovitve diagnoze ter število in odstotek primerov, napotenih na Onkološki inštitut - Slovenija 1992 Number of new cancer cases diagnosed by reporting hospitals, and number and percentage of cases referred to the Institute of Oncology, Ljubljana - Slovenia 1992	48
11.	Število in odstotek novih primerov raka, ugotovljenih v bolnišnicah, po stadiju, lokaciji in spolu - Slovenija 1992 Number and percentage of new cancer cases reported by hospitals by stage, site and sex - Slovenia 1992	50

UVOD

Register raka za Republiko Slovenijo (Register) je bil ustanovljen pri Onkološkem inštitutu v Ljubljani leta 1950 na pobudo in pod vodstvom profesorice dr. Božene Ravnihar kot posebna služba za zbiranje in obdelavo podatkov o incidenci raka in o preživetju bolnikov z rakom. Prijavljanje raka je od takrat dalje v Republiki Sloveniji obvezno, z zakonom predpisano (*Ur. l. SRS*, št. 10/50, št. 29/50, št. 14/65, št. 1/80, št. 45/82, št. 42/85 in *Ur. l. RS*, št 9/92). Podrobneje ga zaenkrat še vedno določa Pravilnik o prijavi in kontroli rakavih bolnikov in o drugih tehničnih vprašanjih boja proti raku (*Ur. l. SRS*, št. 4/66).

Incidenca raka je po svetu zelo različna. Tudi Republika Slovenija kaže v zbolevnosti za rakom svojo posebno sliko. Zbrani podatki so številčna podlaga za ocenjevanje družbenega bremena rakavih bolezni v republiki, programiranje in ocenjevanje onkološkega varstva na področju primarne preventive, detekcije, diagnostike, zdravljenja, rehabilitacije, načrtovanje zmogljivosti in sredstev zdravstvenega varstva, ki so potrebna za obvladovanje rakavih bolezni (kadri, medicinska oprema, posteljne zmogljivosti), ter za klinične in epidemiološke raziskave v Sloveniji in v sklopu širših mednarodnih raziskav.

Populacijski register raka opravičuje svoj obstoj le, če se zbrani podatki tudi redno obdelujejo in objavljajo. Ena izmed stalnih oblik vračanja obdelanih informacij so prav letna poročila. Ker je virov informacij več, leta povsod po svetu izhajajo z dve- ali večletnim zamikom.

Register je prva letna poročila izdajal že v letih 1953-1957 za leta 1951-1955. Prva analiza podatkov za leto 1950 je bila objavljena v *Zdravstvenem vestniku* že leta 1951 (*Zdrav. Vestn.* 1951: 20, 264-277). Podatki za leta 1957-1971 so bili objavljani v periodičnih publikacijah Svetovne zdravstvene organizacije *Epidemiological and Vital Statistics Report* Vol. 14, No. 11, 1961; Vol. 16, No. 12, 1963; Vol. 17, No. 12, 1964; Vol. 19, No. 12, 1966; Vol. 20, No. 12, 1967) in v *World Health Statistics Report* (Vol. 23, No. 3, 1970; Vol. 24, No. 2, 1971; Vol. 25, Nos. 4, 5, 1972; Vol. 26, No. 8, 1973; Vol. 27, Nos. 6, 7, 1974). Podatki od leta 1965 dalje so bili spet redno objavljani v posebnih letnih poročilih z naslovom *Rak v Sloveniji (1965-1977)* oziroma *Incidenca raka v Sloveniji (1978-1991)* v slovenskem in angleškem jeziku. Glede na želje in pripombe uporabnikov poizkušamo ta letna poročila iz leta v leto dopolnjevati. Pri tem nam pomaga uredniški odbor, v katerem so zbrani specialisti različnih vej onkologije (kliniki, epidemiologi in patolog).

Naš Register je ena prvih tovrstnih služb v Evropi. Pred letom 1950 so bili populacijski registri raka ustanovljeni le v Hamburgu, na Danskem, v Veliki Britaniji, v Belgiji in v tedanji ZSSR. Prav zato so in so bili naši podatki o incidenci raka zanimivi tudi za širši svet. Leta 1957 je izšlo prvo obsežnejše poročilo za leta 1950-1955 v angleščini *Cancer in Slovenia 1955* (B. Ravnihar, A. Valentin, T. Božič, J. Doič, D. Pečirer). Podatke za leta 1956-1960, 1961-1965, 1968-1972, 1973-1976, 1978-1981 in 1982-1987 so objavili tudi v vseh šestih zvezkih knjige *Cancer Incidence in Five Continents*, UICC, Ženeva (Vol. 1-1966, eds. Doll R., Payne P., Waterhouse J.; Vol. 2-1970, eds. Doll R., Muir C., Waterhouse J.), in IARC, Lyon (Vol. 3-1976, eds. Waterhouse J., Muir C., Correa C., Powell J.; Vol. 4-1982, eds. Waterhouse J., Muir C., Shanmugaratnam K., Powell J.; Vol. 5-1987, eds. Muir C., Waterhouse J., Mack T., Powell J., Whelan S.; Vol. 6-1992, eds. Parkin M., Muir C., Whelan S., Gao Y., Ferlay J., Powell J.). Podatki o incidenci in umrljivosti za rakom za leta 1983-1990 so vključeni tudi v podatkovno bazo *Mreže evropskih registrov raka EUROCIM*, ki jo vzdržujeta Evropska komisija programa *Evropa proti raku* in *Mednarodna agencija za raziskovanje raka*.

V letu 1993 smo prešli na sodobnejšo, s programom *Oracle* podprto računalniško obdelavo podatkov na lastnem računalniku *Unix, SiliconGraphics IRIS4D/310S*. Zbrane podatke tako lažje obdelujemo še podrobneje v skladu s trenutno perečo problematiko v Sloveniji, našim raziskovalnim programom in željami naših uporabnikov. Ti podatki so objavljeni v domačem in tujem strokovnem tisku ter po potrebi tudi v dnevnikih časopisih. V letu 1991 je izredno veliko število uporabnikov zanimalo pojavljanje raka na območju posameznih občin. Ker je za tovrstno analizo v enem letu v Sloveniji premalo primerov, smo leta 1992 izdali še posebno publikacijo za desetletno obdobje, *Zemljevidi incidence raka v Sloveniji, 1978-1987*. Letos je izšla s slovensko-angleškim besedi-

lom knjiga *Preživetje bolnikov z rakom v Sloveniji 1963-1990*. Barvne slike in tabele s podatki o pričakovanem, opazovanem in relativnem preživetju bolnikov z rakom v šestih časovnih obdobjih spremljajo komentarji klinikov-onkologov. Knjigo lahko kupite v Registru raka po sponzorirani ceni 3000 SIT (študenti 1500 SIT). Lahko pa jo naročite tudi s priloženo naročilnico in plačate po povzetju.

GRADIVO IN POJASNILA

Podatke dobivamo iz posebnih Prijavnic rakave bolezni iz vseh bolnišnic v Sloveniji. Dopolnjujemo jih še z zdravniškimi poročili o vzroku smrti in s podatki iz obdukcijskih zapisnikov, v katerih je navedena diagnoza rak ter s prijavnici iz zdravstvenih domov.

Incidenca pomeni število vseh v enem koledarskem letu na novo ugotovljenih primerov raka, ki jih Registru prijavljajo bolnišnice (tudi če je bila diagnoza rak ugotovljena šele pri obdukciji) ali zdravstveni domovi (v primeru, če bolnik ni bil napoten v bolnišnico), plus število v istem letu umrlih, pri katerih je bil rak ugotovljen šele ob smrti in so prišli v evidenco Registra samo na podlagi zdravniškega poročila o vzroku smrti. V incidenco ne štejemo novih primarnih rakov parnega organa iste lokacije, če je bila histološka vrsta obeh rakov, npr. leve in desne dojke, enaka. Prav tako v incidenco ne štejemo novega pojava raka iste histološke vrste na istem organu, npr. multiple lezije v debelem črevesu. Tabele prikazujejo podatke o prebivalcih in incidenci raka v Sloveniji v letu 1992 po spolu, starosti, lokaciji, histološki vrsti in stadiju bolezni ob diagnozi ter o incidenci po zdravstvenih regijah in območjih zdravstvenih domov, kot tudi podatke o številu novih primerov raka, ugotovljenih v tem letu po posameznih bolnišnicah. Zbiranje podatkov smo zaključili 22. junija 1995. Njihovo zanesljivost osvetljuje dva kazalca: odstotek primerov raka, registriranih samo iz zdravniških poročil o vzroku smrti (tabela 3), in odstotek mikroskopsko (histološko ali citološko) potrjenih primerov (tabela 7).

Slike 1-3 prikazujejo tiste podatke, ki naše uporabnike največkrat zanimajo: to je deset najpogostnejših lokacij raka po spolu ter trendi incidence vseh in izbranih rakov po spolu.

S pregledno tabelo vseh histoloških vrst in slikami 5-8 želimo letos podrobneje osvetliti problematiko sarkomov mehkih tkiv v Sloveniji v letih 1983-1992. Teh sarkomov je 1% vseh rakavih bolezni skupaj. Zaradi njihove raznolikosti in majhnega števila posameznih histoloških vrst, jih v knjigi o preživetju nismo posebej obdelovali. Slike opozarjajo na lokacije sarkomov, starostno porazdelitev in različnost preživetja bolnikov glede na histološko vrsto.

Zanesljivost podatkov za leto 1992, 3-5 % primerov registriranih samo s pomočjo zdravniških poročil o vzroku smrti (tabela 3), je taka kot v letih 1983-90. 3-5 % je realen delež rakavih bolnikov, ki v Sloveniji zaradi starosti in/ali napredovale bolezni ni bil preiskovan in zdravljen v bolnišnici.

Število zbolelih otrok je bilo v letu 1992 v mejah pričakovanega, povečano število novih primerov raka dojk pa je potrdilo našo domnevo, da je bil padeč incidence te bolezni v letu 1991 le naključen.

Tabela 5 prikazuje incidenco na 100 000 prebivalcev. Število vseh novih primerov raka iz leta 1992 je preračunano na število prebivalcev R Slovenije na dan 30. junija tega leta (tabela 1). To je t.i. groba incidenčna mera. Starostno standardizirane incidenčne mere pa izločajo vpliv razlik v starostni strukturi prebivalstva v posameznih letih obdobja opazovanja, v našem primeru staranja prebivalcev R Slovenije v letih 1950-92. Na sliki 2 prikazujemo starostno standardizirane podatke po Dayevi metodi izračuna kumulativne incidence od 0. do vključno 74. leta starosti na 100 prebivalcev. Stare metode direktne in indirektno standardizacije so sicer še v rabi, vendar imajo to slabo lastnost, da dajejo pri velikih razlikah med opazovano in standardno populacijo nerealne (navidezno prevelike ali premajhne) vrednosti tako izračunanih incidenčnih mer (*Cancer Incidence in Five Continents*, Vol. 5, 1987: 787-789). Kumulativna incidenčna mera na 100 prebivalcev je petkratna vsota starostno specifičnih incidenc na 100 prebivalcev posameznih petletnih starostnih skupin. Day jo opredeljuje kot direktno, na dejansko populacijo posamezne petletne starostne skupine standardizirano incidenco. Tolmačimo si jo kot tveganje, ki ga ima novorojenček, da do 75. leta starosti zbolijo za rakom. Kumulativna incidenca 8,55/100 za pljučni rak pri moških pomeni npr., da bo 8,55 % novorojenčkov moškega spola do 75. leta starosti verjetno

zbolelo za pljučnim rakom. Razred velikosti kumulativnih incidenčnih mer na 100 prebivalcev je drugačen kot pri grobih incidenčnih merah na 100 000 prebivalcev. Primerjava oblike krivulj nam kaže, da lahko staranju našega prebivalstva pripišemo naraščanje raka predvsem pri ženskah, medtem ko pri moških očitno k temu prispeva jo še drugi dejavniki tveganja.

Na različno starostno strukturo območij zdravstvenih domov in regij moramo pomisliti tudi pri uporabi in razlagi podatkov tabele 6. Njen prvoten namen je bil prikazati število novo obolelih za operativne namene načrtovanja zmogljivosti in sredstev zdravstvenega varstva na območjih zdravstvenih domov in regij. Tako v tej tabeli prikazujemo tudi podatke o številu novih primerov intraepitelijske oblike raka materničnega vratu z željo, da bi v Sloveniji vzpodbudili vsaj minimalni program sistematičnega presejanja žensk v starosti 25-59 let. Za druge namene, predvsem za iskanje vzrokov takšnega ali drugačnega pojavljanja raka, je treba podatke najprej starostno standardizirati. Kako vpliva različna starostna struktura na incidenčne mere, je razvidno iz že omenjene knjige *Zemljevidi incidence raka v Sloveniji*, ki prikazuje tako grobe kot kumulativne incidenčne mere za vse in najpogostejše rake po občinah.

Lokacije raka smo šifrirali po 8. reviziji *Mednarodne klasifikacije bolezni* (MKB-8). Po tej klasifikaciji smo uvrstili med šifre 196-199 tiste primere raka, pri katerih primarne lokacije ni bilo mogoče ugotoviti. Takšni primeri z metastazami v bezgavkah so npr. uvrščeni v šifro 196. Osmo revizijo uporabljamo zaradi možne primerjave podatkov v tem poročilu s poročili od vključno 1970. leta dalje.

V tabelah 7 in 8 je navedeno število vseh mikroskopsko, to je histološko ali citološko potrjenih novih primerov raka. V tabeli 8 so ločeno navedeni primeri, ki so histološko potrjeni, in tisti, ki so potrjeni samo citološko (ti primeri so navedeni v oklepaju). Vsota vseh je enaka številu vseh mikroskopsko potrjenih primerov, navedenem v tabeli 7. Histološke vrste v tabeli 8 so šifrirane po 2. reviziji šifranta ICD-O (WHO, 1991). Združili smo jih v smiselne skupine za namene tega poročila. To pa ne izključuje individualne obdelave po katerikoli šifri navedenega šifranta ICD-O, npr. izpisa redkih histoloških vrst, kot so Burkittovi limfomi. Iz te tabele lahko razberemo tudi primarne lokacije ekстранodalnih malignih limfomov in njihovo število. Ekстранodalni maligni limfomi so namreč dosledno uvrščeni med ustrezne šifre primarne lokacije raka.

Starostno porazdelitev ekстранodalnih in nodalnih lokacij ne-Hodgkinovih malignih limfomov kaže tabela 9. Zaradi majhnega števila prikazujemo le absolutna števila.

Tabela 11 prikazuje stadije ob ugotovitvi bolezni. Opredelitev stadijev solidnih tumorjev ne sledi pravilom *klasifikacije TNM*, ampak dogovorjenim pravilom registrov raka, ki pri opredeljevanju stadija upoštevajo vse preiskovalne metode, vključno operacijo; če bolnik ni bil predhodno zdravljen, pa tudi obdukcijo. Maligni limfomi so opredeljeni po klasifikaciji *Ann-Arbor*. Podobno kot za histološke vrste je možen tudi izpis podatkov po *klasifikaciji TNM*, v kolikor so bili podatki ustrezno šifrirani na prijavnica h oziroma že v popisih bolezni.

V tabele so vključeni le podatki o bolnikih, ki imajo stalno bivališče na območju Republike Slovenije, ne glede na to, kje so bili zdravljeni.

ZAHVALA

Zahvaljujemo se vsem zdravnikom, medicinskim sestram in administrativnemu osebju, ki so nam vestno in redno pošiljali podatke o novozbolelih rakavih bolnikih in njihovi nadaljnji usodi. Prav posebej se zahvaljujemo sodelavkam Bolnišničnega registra Onkološkega inštituta v Ljubljani: Ani Dotzauer, Boži Kolar, Mariji Kralj in Nadi Jamšek, ki so z vodenjem evidence in s skrbnim izpisovanjem in šifriranjem podatkov iz popisov bolezni prispevale vsaj polovico v tem poročilu obdelanih podatkov.

Vera Pompe Kirn

Ljubljana, 21. 6. 1995

INTRODUCTION

The Cancer Registry of Slovenia (Registry) was founded in 1950 at the Institute of Oncology in Ljubljana, on the initiative and under the leadership of Prof. Božena Ravnihar, MD, as a special service for collecting and processing data on cancer incidence and cancer patients' survival. Since then notification of cancer has been compulsory in Slovenia (*Official Gazette of SRS*, No. 10/50, No. 29/50, No. 14/65, No. 1/80, No. 45/82, No. 42/85, and *Official Gazette of RS*, No. 9/92). Detailed definition on this is given in the Regulations on notification and follow-up of cancer patients and other technical aspects of anticancer activities. (*Official Gazette of SRS*, No. 4/66).

Cancer incidence in the world varies greatly. The Republic of Slovenia also shows its specific cancer incidence pattern. The collected data serve as a basis for the assessment of cancer burden, for programming and evaluation of primary prevention, detection, diagnosis, treatments, rehabilitation, for planning facilities and funding needed for cancer control, hospital capacities and equipment, as well as for clinical and epidemiological research in Slovenia and in different multicentric international projects.

The existence of a population-based cancer registry is justified only by regular processing and publication of the collected data. The Registry's Annual Reports represent a permanent feed-back information. Because of many different data sources and data contributors, almost all cancer registries practise at least a two year period delay before publishing.

The first analysis of data for 1950 was published in *Zdravstveni vestnik* in 1951, whereas the first annual reports of the Registry for the period 1951-1955 were issued during the years 1953-1957. The data for the period 1957-1971 appeared in periodicals edited by World Health Organization - *Epidemiological and Vital Statistics Report*, Vol. 14, No. 11, 1961; Vol. 16, No. 12, 1963; Vol. 17, No. 12, 1964; Vol. 19, No. 12, 1966; Vol. 20, No. 12, 1967), as well as in *World Health Statistics Report* (Vol. 23, No. 3, 1970; Vol. 24, No. 2, 1971; Vol. 25, Nos. 4, 5, 1972; Vol. 26, No. 8, 1973; Vol. 27, Nos. 6, 7, 1974). The data from 1965 on have again appeared regularly in special annual reports, first entitled *Cancer in Slovenia* (1965-1977), and afterwards *Cancer Incidence in Slovenia* (1978-1991); the publication appears in Slovene and English. Our constant endeavours are directed into further improvement of these publications, taking into account the requests and comments of the users. In this, the support of our editorial board consisting of experts - oncologists of different specialities (i.e. clinicians, epidemiologists and a pathologist) proves to be very helpful.

Our Registry is one of the oldest services of this type in Europe. Before 1950, population-based cancer registries existed only in Hamburg (Germany), Denmark, Great Britain, Belgium and in the former Soviet Union. Therefore, our data on cancer incidence are interesting for a wide circle of professionals abroad. In 1957, the first comprehensive report in English for the period 1950-1955 entitled *Cancer in Slovenia* was issued (B. Ravnihar, A. Valentin, T. Božič, J. Doič, D. Pečirer). The data for periods 1956-1960, 1961-1965, 1968-1972, 1973-1976, 1978-1981, 1982-1987 were reported in all six volumes of the publication *Cancer Incidence in Five Continents* issued by UICC, Geneva (Vol. 1, 1966, eds. Doll R., Payne P., Waterhouse J.; Vol. 2, 1970, eds. Doll R., Muir C., Waterhouse J.), and IARC, Lyon (Vol. 3, 1976, eds. Waterhouse J., Muir C., Correa C., Powell J.; Vol. 4, 1982, eds. Waterhouse J., Muir C., Shanmugaratnam K., Powell J.; Vol. 5, 1987, eds. Muir C., Waterhouse J., Mack T., Powell J., Whelan S.; Vol. 6, 1992, eds. Parkin M., Muir C., Whelan S., Gao Y., Ferlay J., Powell J.). The data on cancer incidence and mortality for the years 1983-1990 are also included in EUROCIM, the data base of the *Network of European cancer registries*, maintained by the European Commission of *Europe Against Cancer* program, and IARC (*International Agency for Research on Cancer*). In 1993 we started to perform computer data analyses with the *Oracle* relational data base support on our own *Unix - Silicon Graphics IRIS4D/310S* server. This facilitates detailed analyses of the collected data, in accordance with the current problems in Slovenia, as well as with respect to our research program and individual needs of our users. These data are published in the national and foreign medical literature and in the daily print, when necessary. In 1992,

a special publication covering a ten-year period, *Atlas of Cancer Incidence in Slovenia, 1978-1987* was published. In this year, a book entitled "Cancer patients in Slovenia, 1963-1990" with Slovene-English text was published. The color pictures and tables presenting the data on expected, observed and relative survival of cancer patients in 6 time periods are explained by clinicians-oncologists' comments. The book can be purchased in the Cancer Registry at a reduced price of 3000 SIT (students 1500 SIT), or it can be ordered by the enclosed order form and paid on receipt.

MATERIAL AND COMMENTS

The main sources of data are notifications gathered from all hospitals in Slovenia. This information is completed by death certificates and autopsy protocols stating cancer diagnosis, and by notifications from regional health centres.

Incidence represents the number of newly diagnosed cancer cases reported to the Registry in a given calendar year by regional hospitals (also if the diagnosis of cancer was established on autopsy only) or regional health centres (in the cases when the patient has not been referred to hospital), as well as of cases brought to the attention of the Registry only on the basis of death certificates. New primary cancers of the same histology in paired organs were not comprised in the incidence figures, neither were any new cancers of the same histology appearing in the same organ, e.g. multiple lesions of the colon. In tables, data on population and on cancer incidence in Slovenia in 1991 by sex, age, site, histologic type, stage at diagnosis, health regions and health centre districts, and by reporting hospitals are presented. Data were collected till June 21, 1995. Their reliability is indicated by two parameters, i.e. the percentage of cancer cases registered from death certificates alone (Table 3), and the percentage of microscopically (histologically or cytologically) confirmed cases (Table 7).

Figures 1-3 present the data our readers are most frequently interested in: the ten most frequent cancer sites by sex, and the incidence trends for all and selected sites by sex.

The review table of all histological types and Figures 5-8 are intended to center our attention on the problems of soft tissue sarcomas in Slovenia in the years 1983-1992. These sarcomas represent 1% of all cancer diseases put together. They were deliberately omitted from the book on cancer survival owing to their great variety and a small number of individual histological types. The figures draw attention to the sites, age distribution and differences in patients' survival by different histological types of sarcoma.

The reliability of data for 1992, 3-5% of cases registered only from death certificates (Table 3), was the same as that registered in the years 1983-90. It is believed that the estimated 3-5% of cancer patients registered in Slovenia only on the basis of death certificates is a realistic percentage of cancers that failed to be diagnosed and/or treated at hospital owing to the patients' advanced age or stage of the disease.

In 1992 the number of childhood cancer cases was within the limits of values expected, while the increased number of breast cancers has confirmed our belief that the decrease in the incidence of this disease in 1991 was merely incidental.

Incidence per 100 000 population is presented in Table 5. It has been calculated from the number of inhabitants of Slovenia on June 30, 1992 (Table 1). This is the crude incidence rate. In age standardized incidence rates (Figure 2), the influence of the differences in population age structure in the period of observation has been excluded (the aging of the Slovene population in the period 1950-92). They were calculated according to the Day's method for cumulative incidence calculation from 0 to 74 years of age per 100 population (*Cancer Incidence in Five Continents*, Vol. 5, 1987: 787-789). Cumulative incidence represents five times the sum of the age-specific incidence rates in 5-year age groups. Day interprets it as a directly standardized incidence rate with the same population size in each age group or as an approximation to the cumulated risk. It represents a newborn's risk of developing cancer by his 75th year of age. Thus, the cumulative incidence of 8.55 / 100 for lung cancer in males means that 8.55 % of male newborns are expected to develop lung cancer till their 75th year of age. The cumulative incidence figures differ from those of crude incidence per 100 000 population. The comparison of

crude and age-standardized incidence curves (Figure 2) indicates that the increasing crude cancer incidence rate in females can be attributed to the aging of population, whereas in males obviously additional risk factors should be considered as well.

When using and interpreting the data in Table 6, different age structure in regional health centre districts and administrative health-regions should be taken into account. The table has been originally designed to present the number of newly diagnosed cancers, as needed for planning of facilities and funding of health care in the regions and health centre districts. Therefore, in this table the data on all new in situ cervical cancer cases by health centres are presented, in order to stimulate at least a minimal programme for systematic screening in the age group 25-59. When used for other purposes, particularly for the search of possible risk factors of different cancers, the data require previous age standardization. The influence of different age structures on the incidence rates is evident also from maps drawn in the mentioned *Atlas of Cancer Incidence in Slovenia, 1978-1987*, presenting crude as well as cumulative incidence rates for all and most frequent cancers by communes.

Primary cancer sites were coded according to the 8th revised edition of *International Classification of Diseases (ICD-8)*. Thus, the cancer cases with unknown primary site were coded 196-199; e.g. such cases with lymph node metastases were classified under code 196. The 8th revision has been used in order to enable a comparison of data in the present report with those reported from the year 1970 on.

The number of all microscopically, i.e. histologically and/or cytologically confirmed new cancer cases is presented in Table 7. In Table 8 histologically and cytologically verified cases are presented separately. The cytologically verified cases are given in brackets. The sum of histologically and cytologically verified cases in Table 8 equals the number of microscopically verified cases in Table 7.

Histologic types in Table 8 are coded according to the 2nd revision of ICD-O (WHO, 1991). For the purpose of this report, some rare cancers have been grouped together. This, however, does not exclude individual processing by any ICD-O code, e.g. outprint of rare histologic types such as Burkitt lymphomas. The table also provides information on primary sites of extranodal malignant lymphomas and their number, as the extranodal are strictly categorized among primary sites by corresponding codes.

In Table 9, age distribution of extranodal and nodal sites of non-Hodgkin malignant lymphomas is presented. Owing to a small number of extranodal sites only the absolute numbers are given.

Table 11 shows stages of the disease at diagnosis. Solid tumor stage is not classified according to TNM classification system, but by cancer registries regulations according to which all investigation methods incl. surgery are considered in stage determination. In the case that the patient was not treated previously, autopsy report is considered as well. Malignant lymphomas are classified according to Ann-Arbor system. As for the histologic type, outprint of data by TNM classification is possible as well, provided that the data were correctly coded in patient records as well as on notification forms.

The data presented in tables refer only to patients, residents in Slovenia, irrespective of their place of treatment.

ACKNOWLEDGMENT

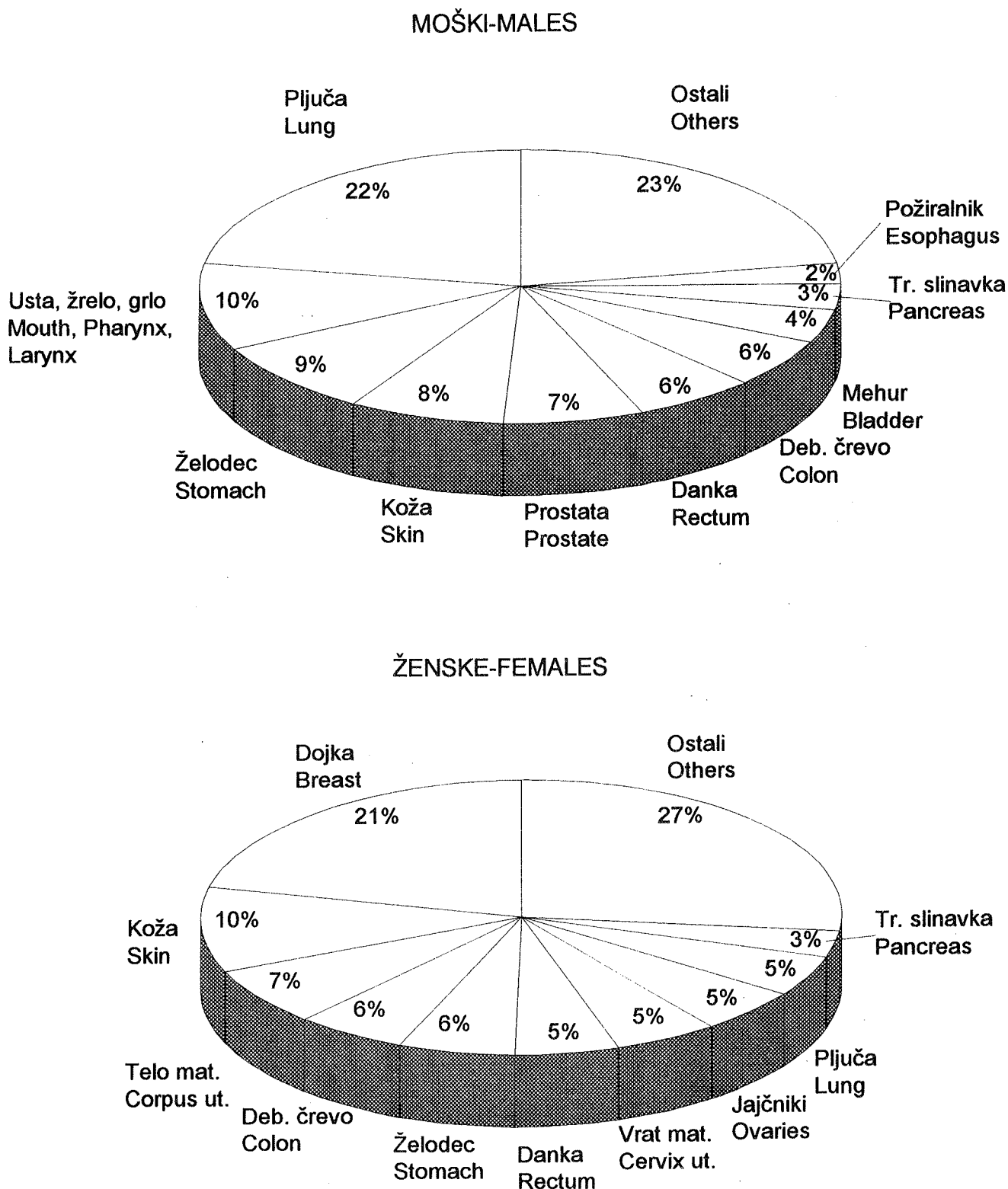
We thank to the physicians, nurses and administrative staff who have provided the data on new cancer patients and their further history. We owe special thanks to the coworkers of the Hospital Registry of the Institute of Oncology, Mrs. Ana Dotzauer, Boža Kolar, Marija Kralj, and Nada Jamšek, whose accurate evidence keeping, registration and coding of data from patients records have contributed more than a half of the information presented in this report.

Vera Pompe Kirn

Ljubljana, June 21, 1995

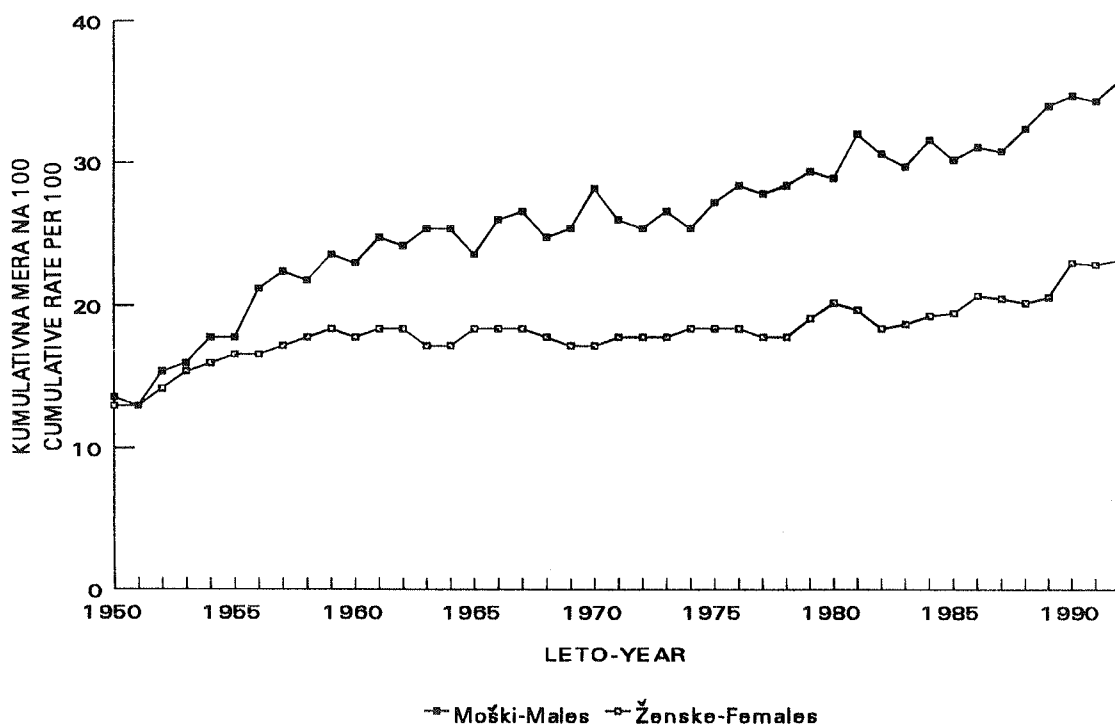
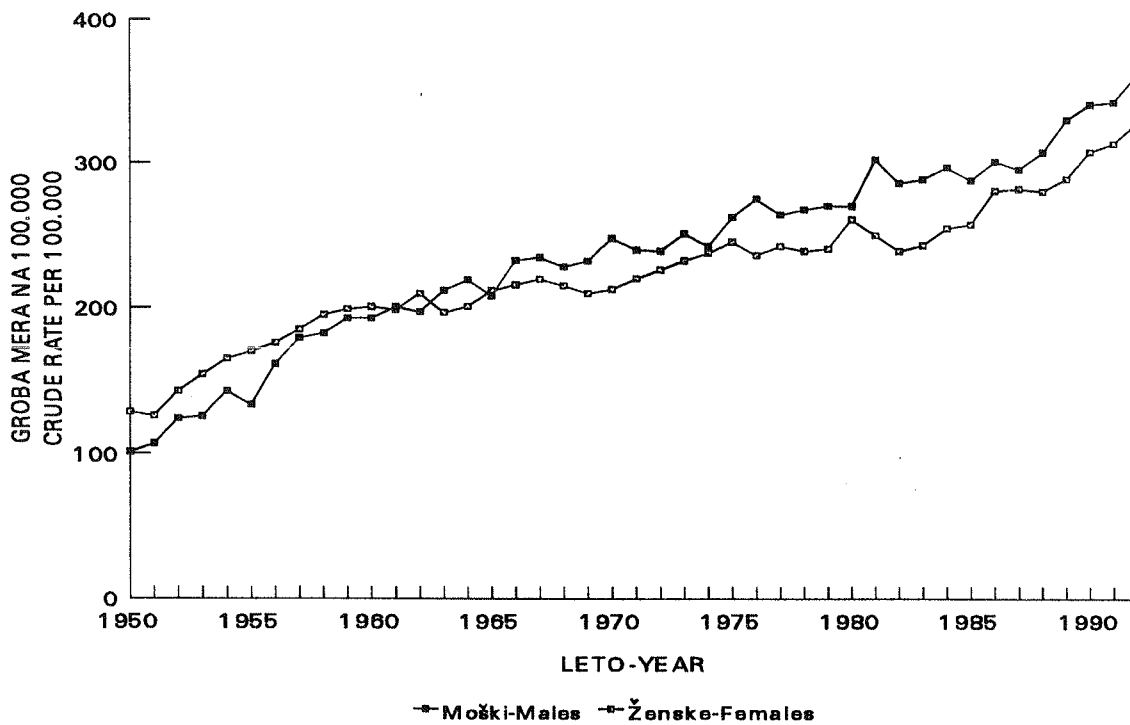
Slika 1. Delež desetih najpogostejših lokacij raka po spolu - Slovenija 1992

Figure 1. Percentages for the ten leading cancer sites by sex - Slovenia 1992



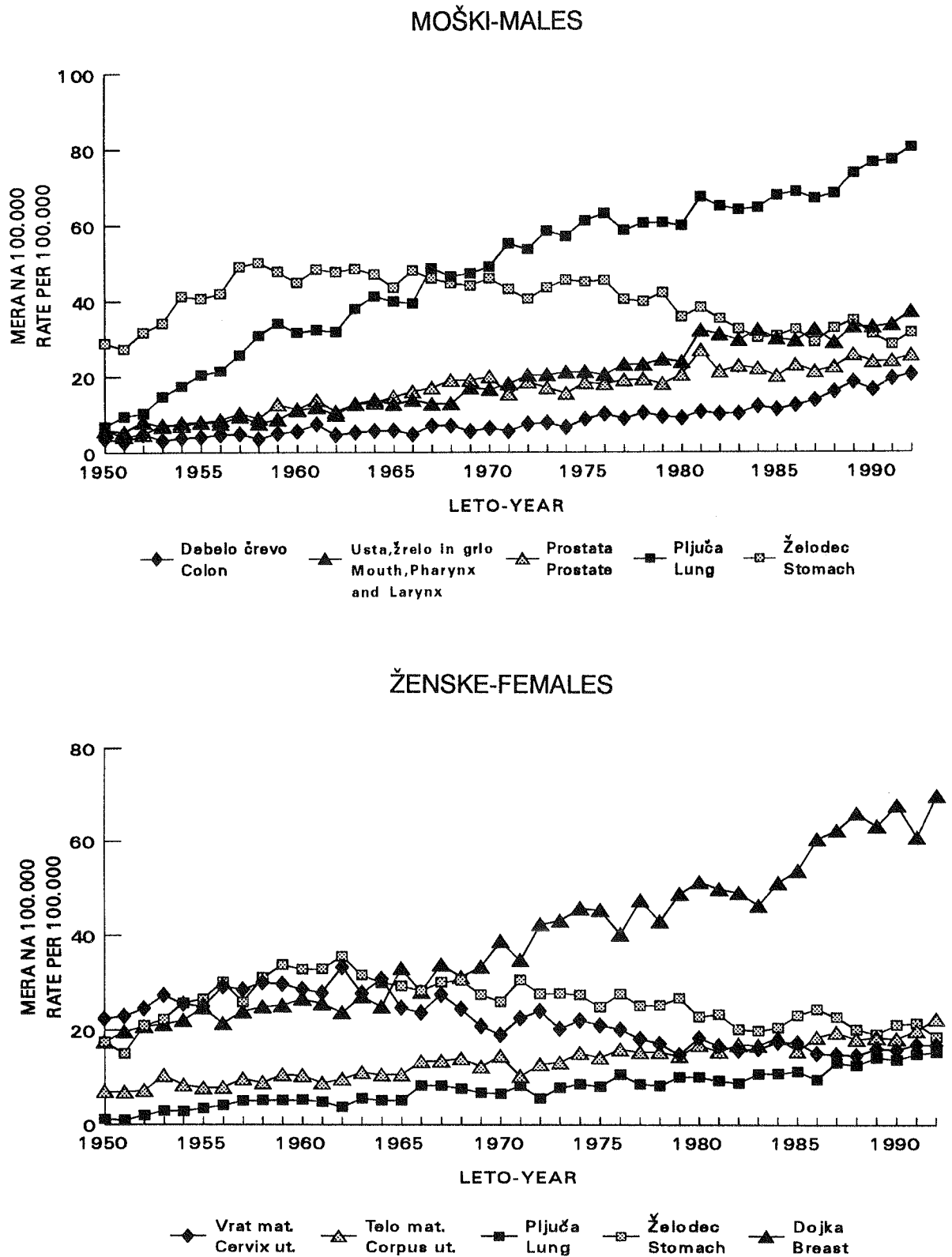
Slika 2. Grobe in kumulativne letne incidenčne mere raka vseh lokacij po spolu - Slovenija 1950-1992

Figure 2. Crude and cumulative annual cancer incidence rates; all sites by sex - Slovenia 1950-1992



Slika 3. Grobe letne incidenčne mere izbranih rakov po spolu - Slovenija 1950-1992

Figure 3. Crude annual cancer incidence rates by selected primary sites and sex - Slovenia 1950-1992



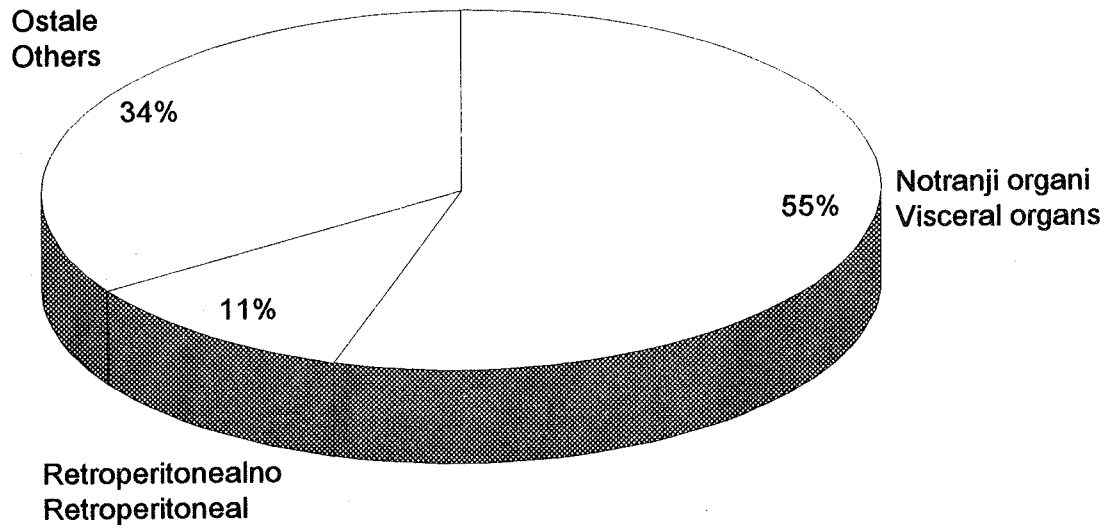
Slika 4. Sarkomi mehkih tkiv po histološki vrsti in starosti - Slovenija 1983-92

Figure 4. Soft-tissue sarcoma by histology and age - Slovenia 1983-92

<i>Histološka vrsta</i> <i>Histologic type</i>	<i>Starostne skupine</i>				<i>Age groups</i>		
	<i>Vse/All</i>	<i>0-14</i>	<i>15-29</i>	<i>30-44</i>	<i>45-59</i>	<i>60-74</i>	<i>75+</i>
Vse vrste All types	674	69	62	84	213	172	74
Fibrosarcoma	12	-	2	5	1	2	2
Dermatofibrosarcoma protuberans	28	3	7	9	7	-	2
Malignant fibrous histiocytoma	90	1	3	7	26	34	19
Liposarcoma	59	-	7	11	25	12	4
Epitheloid leiomyosarcoma	19	-	2	1	10	5	1
Other leiomyosarcoma	128	1	5	15	45	44	18
Rhabdomyosarcoma	43	23	7	4	4	5	-
Angiosarcoma	9	-	2	1	2	3	1
Kaposi sarcoma	2	-	-	1	-	-	1
Malignant hemangiopericytoma	3	-	-	2	1	-	-
Malignant localized fibrous mesothelioma	3	-	-	-	2	1	-
Other mesothelioma	106	-	2	8	49	35	12
Malignant PNST	1	-	1	-	-	-	-
Malignant granular cell tumor	1	-	-	-	1	-	-
Malignant schwannoma	13	2	1	4	5	1	-
Neuroblastoma	22	20	-	2	-	-	-
Ganglioneuroblastoma	8	7	1	-	-	-	-
Neuroepithelioma	1	-	1	-	-	-	-
Malignant paraganglioma	-	-	-	-	-	-	-
Malignant mesenchymoma	10	1	-	-	4	3	2
Extraskeletal chondrosarcoma	4	-	-	-	2	1	1
Extraskeletal osteosarcoma	2	1	-	-	1	-	-
Alveolar soft-part sarcoma	1	-	-	-	-	1	-
Epitheloid sarcoma	7	-	4	1	2	-	-
Extraskeletal Ewing sarcoma	2	1	-	-	1	-	-
"Synovial" sarcoma	21	4	6	5	3	3	-
Malignant extrarenal rhabdoid tumor	-	-	-	-	-	-	-
Unclassified soft tissue sarcoma	79	5	11	8	22	22	11

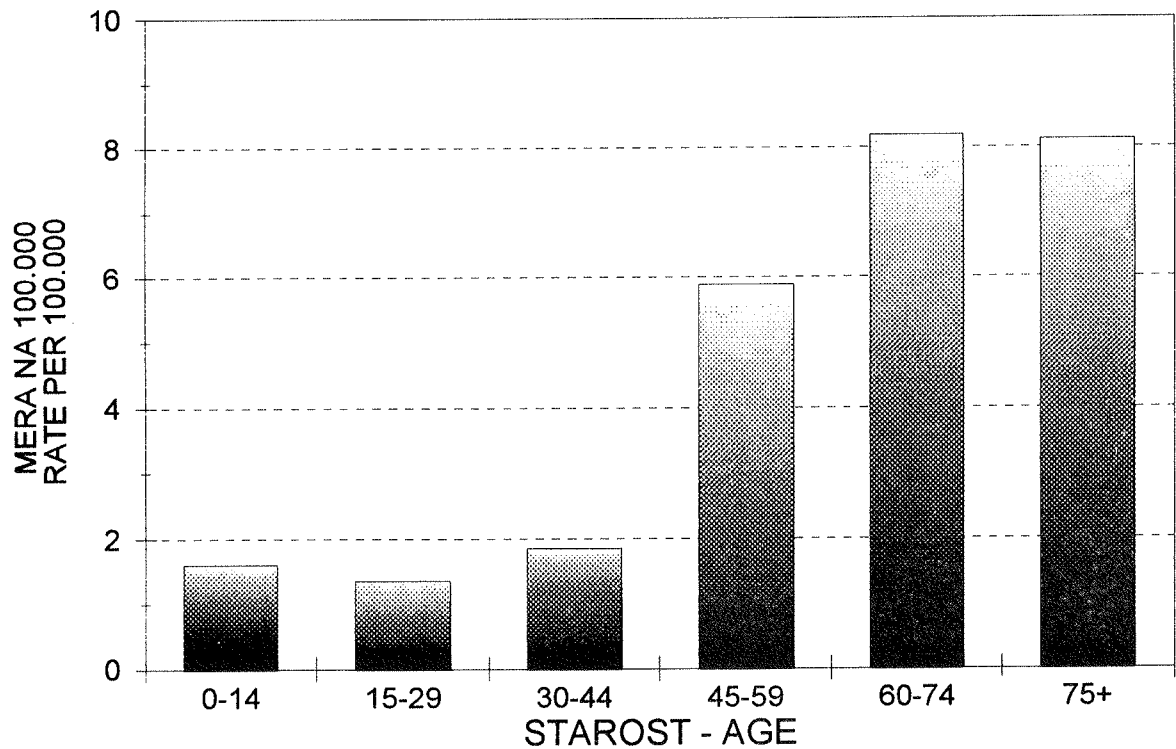
Slika 5. Sarkomi mehkih tkiv po primarni lokaciji - Slovenija 1983-92

Figure 5. Soft-tissue sarcoma by primary site - Slovenia 1983-92



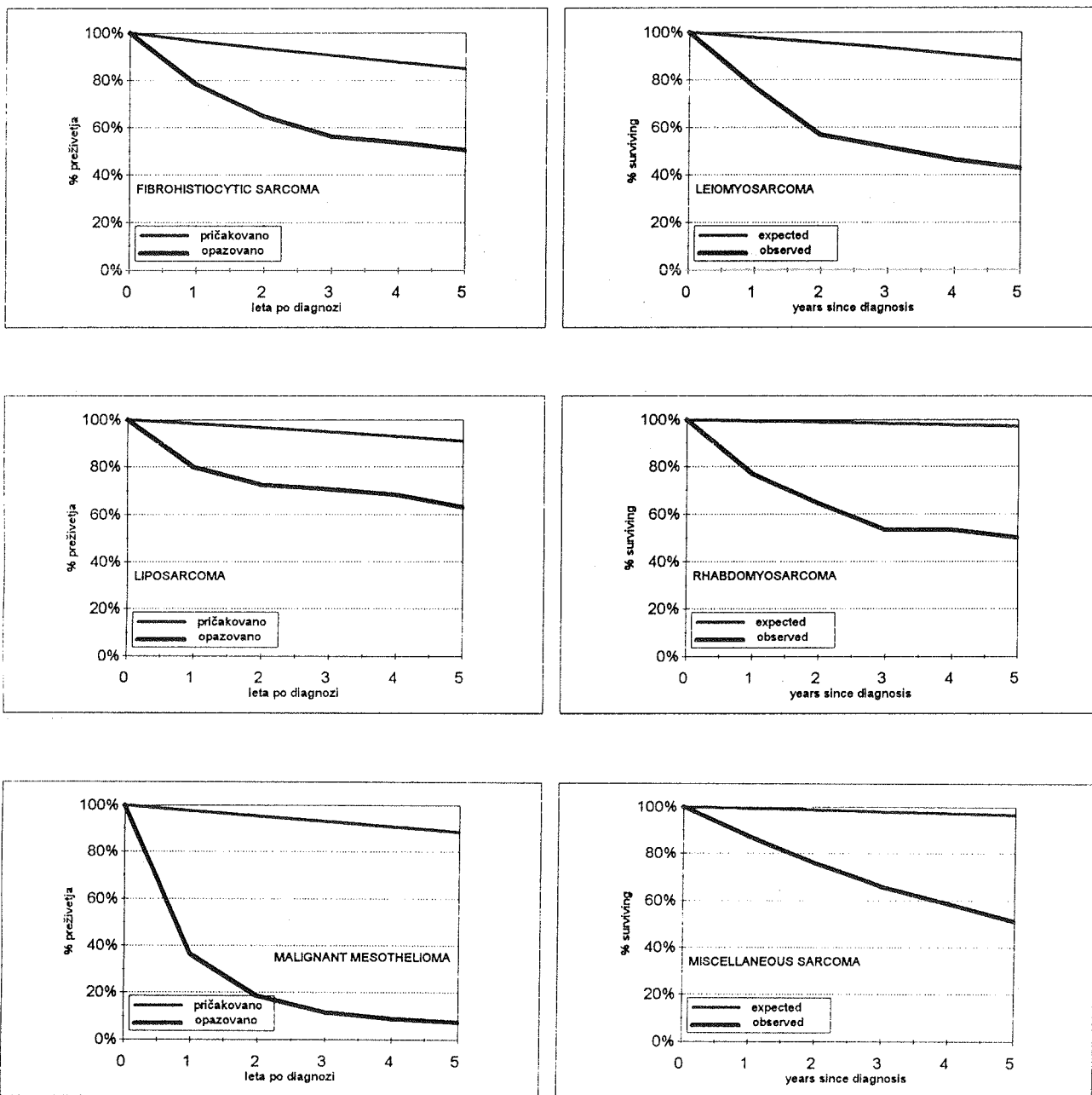
Slika 6. Sarkomi mehkih tkiv po starosti - Slovenija 1983-92

Figure 6. Soft-tissue sarcoma by age - Slovenia 1983-92



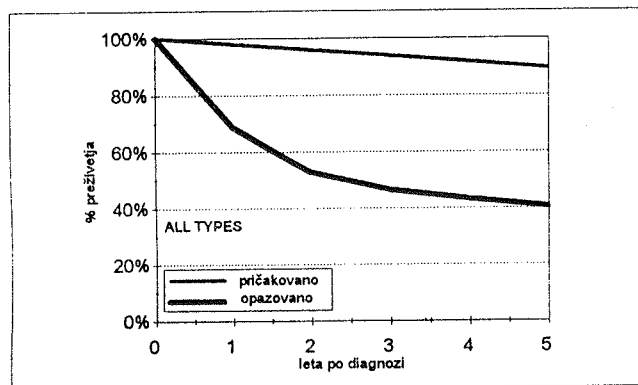
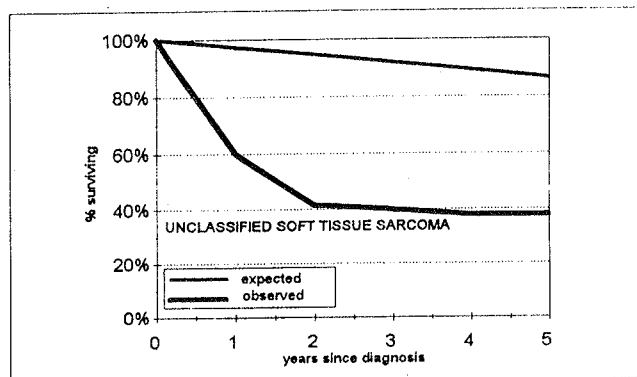
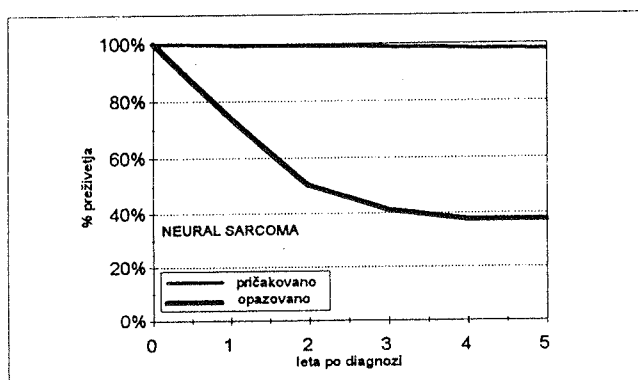
Slika 7. Opazovano in pričakovano preživetje bolnikov s sarkomi mehkih tkiv po histološki vrsti - Slovenija 1983-92

Figure 7. Observed and expected survival of patients with soft-tissue sarcoma by histology - Slovenia 1983-92



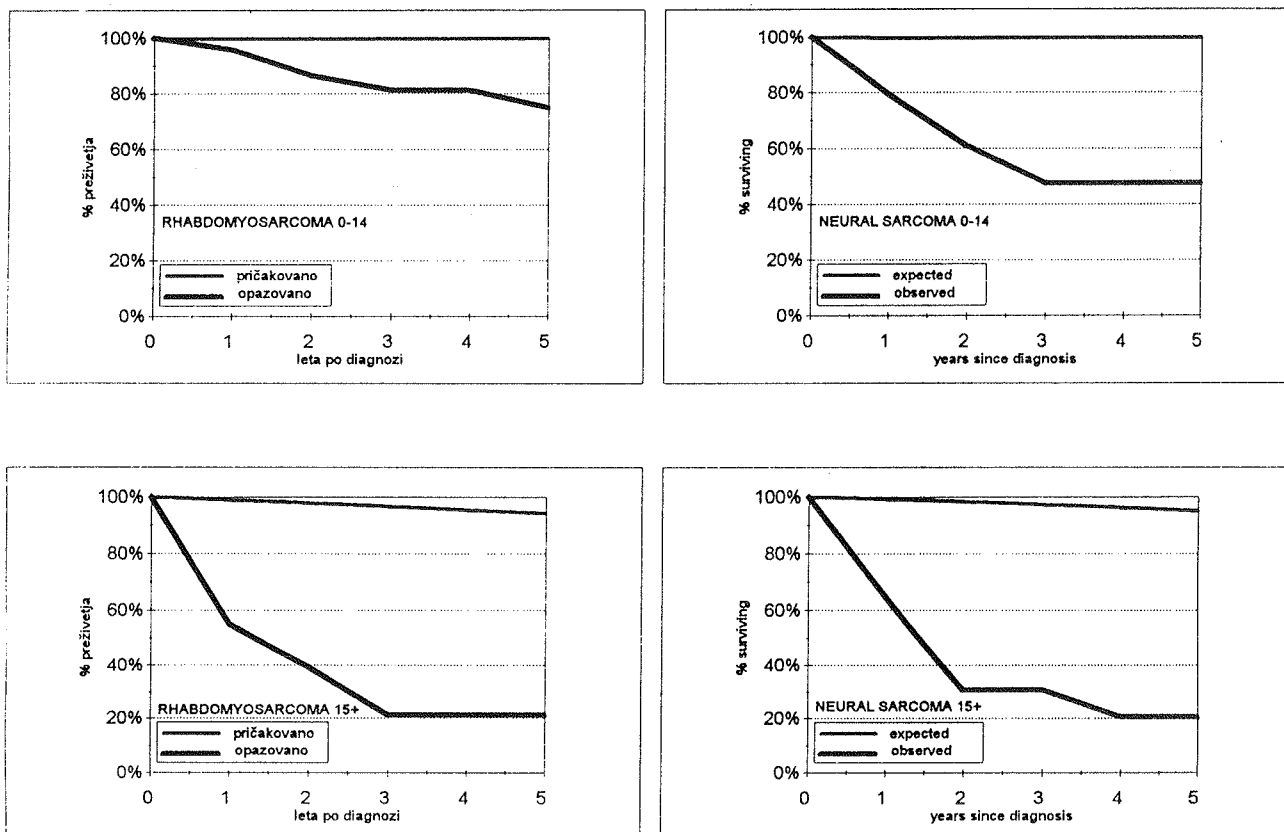
Slika 7. Nadaljevanje

Figure 7. Continued



Slika 8. Opazovano in pričakovano preživetje bolnikov z rhabdiosarkomom in sarkomom živčevja po starosti - Slovenija 1983-92

Figure 8. Observed and expected survival of patients with rhabdomyosarcoma and neural sarcoma by age - Slovenia 1983-92



Mesec dni po izdaji velike knjige o preživetju bolnikov z rakom v Evropi je na podlagi podatkov Registra raka za Slovenijo izšla tudi knjiga PREŽIVETJE BOLNIKOV Z RAKOM V SLOVENIJI (avtorji V. Pompe-Kirn, B. Zakotnik, N. Volk, T. Benulič in J. Škrk). Z barvnimi slikami in tabelami je predstavljeno pričakovano, opazovano in relativno preživetje bolnikov z rakom v letih 1963-90. Pri pisanju spremnega besedila je sodelovalo 18 klinikov-onkologov, ki že vrsto let zdravijo bolnike z rakom v Sloveniji. Knjiga je izšla 5. junija 1995.

Knjiga je na voljo po subvencionirani ceni 3000 SIT. Kupite jo lahko v Registru raka za Slovenijo na Onkološkem inštitutu v Ljubljani, Zaloška 2 (III. nadstropje stavbe C), če pa izpolnite in nam pošljete spodnjo naročilnico, vam knjigo pošljemo s plačilom po povzetju.

*Registru raka za Slovenijo
Onkološki inštitut
61000 Ljubljana
Zaloška c. 2*

NAROČILNICA

Prosim, da na naslov

.....
.....
.....
.....

pošljete po povzetju
..... izvod(ov) knjige

PREŽIVETJE BOLNIKOV Z RAKOM V SLOVENIJI, 1963-1990

V....., dne.....

Podpis (in žig)

Tabela 1. Prebivalstvo Slovenije po starosti in spolu na dan 30. 6. 1992***Table 1. Population of Slovenia by age and sex on June 30th, 1992***

<i>Starost</i> <i>Age</i>	<i>Skupaj</i> <i>Total</i>	<i>Moški</i> <i>Males</i>	<i>Ženske</i> <i>Females</i>
0 - 4	114 365	58 725	55 640
5 - 9	131 071	66 995	64 076
10 - 14	149 533	77 018	72 515
15 - 19	148 579	76 021	72 558
20 - 24	142 337	71 631	70 706
25 - 29	155 250	77 314	77 936
30 - 34	155 243	78 002	77 241
35 - 39	165 780	85 140	80 640
40 - 44	153 254	78 768	74 486
45 - 49	118 513	59 976	58 537
50 - 54	118 040	59 086	58 954
55 - 59	112 860	54 091	58 769
60 - 64	106 790	47 919	58 871
65 - 69	84 641	31 662	52 979
70 - 74	52 502	18 330	34 172
75 - 79	39 185	13 474	25 711
80 in več 80 and over	47 889	14 105	33 784
Vse starosti Total	1 995 832	968 257	1 027 575

* Vir: *Statistične informacije*, št. 33/1993, Zavod R Slovenije za statistiko, Ljubljana, 16. februar 1993
 Source: *Statistične informacije*, No. 33/1993, Zavod R Slovenije za statistiko, Ljubljana, February 16, 1993

Tabela 2. Prebivalstvo Slovenije po zdravstvenih regijah in območjih zdravstvenih domov po spolu na dan 30. junija 1992*

Table 2. Population of Slovenia by health regions and subregions by sex on June 30th, 1992*

<i>Zdravstvena regija</i> <i>Zdravstveni dom</i>	<i>Skupaj</i>	<i>Moški</i>	<i>Ženske</i>
<i>Health region</i> <i>Subregion</i>	<i>Total</i>	<i>Males</i>	<i>Females</i>
R Slovenija	1 995 832	968 257	1 027 575
Celje	242 223	117 773	124 450
ZD Celje	242 223	117 773	124 450
Gorica	103 043	50 263	52 780
ZD Nova Gorica	103 043	50 263	52 780
Koper	136 133	66 676	69 457
ZD Koper	78 031	38 161	39 870
ZD Postojna	58 102	28 515	29 587
Kranj	194 557	94 124	100 433
ZD Jesenice	67 043	32 486	34 557
ZD Kranj	127 514	61 638	65 876
Ljubljana	593 694	284 702	308 992
ZD Domžale	93 542	45 464	48 078
ZD Kočevje	31 782	15 680	16 102
ZD Ljubljana	359 211	170 401	188 810
ZD Trbovlje	47 291	22 931	24 360
ZD Vrhnika	61 868	30 226	31 642
Maribor	328 112	159 302	168 810
ZD Maribor	240 703	116 710	123 993
ZD Ptuj	87 409	42 592	44 817
Murska Sobota	130 809	63 730	67 079
ZD Murska Sobota	130 809	63 730	67 079
Novo mesto	133 009	65 193	67 816
ZD Novo mesto	133 009	65 193	67 816
Ravne	134 252	66 494	67 758
ZD Ravne	74 462	37 040	37 422
ZD Velenje	59 790	29 454	30 336

* Vir: *Statistične informacije*, št. 33/1993, Zavod R Slovenije za statistiko, Ljubljana, 16. februar 1993
Source: *Statistične informacije*, No. 33/1993, Zavod R Slovenije za statistiko, Ljubljana, February 16, 1993

Tabela 3. Število novih primerov raka ter število in odstotek primerov, registriranih samo iz zdravniških poročil o vzroku smrti, po lokaciji in spolu - Slovenija 1992

Table 3. Total number of new cancer cases and number and percentage of cases registered from death certificates only, by site and sex - Slovenia 1992

<i>Šifra MKB*</i>	<i>Primarna lokacija</i>	<i>Spol</i>	<i>Število novih primerov</i>	<i>Registrirani samo iz zdravniških poročil o vzroku smrti</i>	
<i>ICD* No.</i>	<i>Primary site</i>	<i>Sex</i>	<i>Number of new cases</i>	<i>Registered from death certificates only Number</i>	<i>Odstotek** Per cent**</i>
140	Vse lokacije	Skupaj	6 885	261	4
-	All sites	Total			
209		Moški	3 511	114	3
		Male			
		Ženske	3 374	147	4
		Female			
140	Ustnica	M	29	-	-
	Lip	Ž	10	-	-
141	Jezik	M	43	-	-
	Tongue	Ž	7	2	-
142	Slinavke	M	8	-	-
	Salivary glands	Ž	7	-	-
143	Dlesni	M	6	-	-
	Gum	Ž	2	-	-
144	Ustno dno	M	38	-	-
	Floor of mouth	Ž	4	-	-
145	Usta, drugo	M	26	-	-
	Mouth, other parts	Ž	5	-	-
146	Orofarinks	M	93	-	-
	Oropharynx	Ž	8	1	-
147	Epifarinks	M	8	-	-
	Epipharynx	Ž	3	-	-
148	Hipofarinks	M	45	-	-
	Hypopharynx	Ž	4	-	-
149	Žrelo, neoznačeno	M	1	1	-
	Pharynx, not specified	Ž	-	-	-
150	Požiralnik	M	86	5	6
	Esophagus	Ž	18	5	28
151	Želodec	M	306	23	8
	Stomach	Ž	192	27	14
152	Tanko črevo	M	5	-	-
	Small intestine	Ž	4	-	-

cont. ↓

Tabela 3. Nadaljevanje - continued

<i>Šifra MKB*</i>	<i>Primarna lokacija</i>	<i>Spol</i>	<i>Število novih primerov</i>	<i>Registrirani samo iz zdravniških poročil o vzroku smrti</i>	
<i>ICD* No.</i>	<i>Primary site</i>	<i>Sex</i>	<i>Number of new cases</i>	<i>Število</i>	<i>Odstotek**</i>
				<i>Registered from death certificates only</i>	<i>Number</i>
					<i>Per cent**</i>
153	Debelo črevo	M	200	7	4
	Colon	Ž	198	6	3
154	Rektum	M	216	12	6
	Rectum, anus	Ž	180	14	8
155	Jetra	M	42	-	-
	Liver	Ž	19	-	-
156	Žolčnik, žolčni vodi	M	37	1	3
	Gall bladder, bile ducts	Ž	70	6	9
157	Trebušna slinavka	M	108	4	4
	Pancreas	Ž	103	9	9
158	Retro-, peritonej	M	11	-	-
	Retro-, peritoneum	Ž	8	-	-
159	Prebavila, drugo	M	-	-	-
	Digestive organs, other	Ž	6	4	-
160	Nos, obnosne votline, drugo	M	8	-	-
	Nose, sinuses, etc.	Ž	10	-	-
161	Grlo	M	108	3	3
	Larynx	Ž	10	-	-
162	Sapnik, sapnica, pljuča	M	781	26	3
	Trachea, bronchus, lung	Ž	159	8	5
163	Plevra, mediastin., drugo	M	12	-	-
	Pleura, mediastinum, etc.	Ž	3	-	-
170	Kosti	M	2	-	-
	Bone	Ž	11	-	-
171	Mehka tkiva	M	13	-	-
	Soft tissues	Ž	16	-	-
172	Koža, maligni melanom	M	63	-	-
	Skin, malignant melanoma	Ž	81	2	2
173	Koža, drugi malignomi	M	277	-	-
	Skin, other malignancies	Ž	334	2	1
174	Dojka	M	7	-	-
	Breast	Ž	720	11	2
180	Maternica, vrat	Ž	176	-	-
	Uterus, cervix				
181	Horioepiteliom	Ž	1	-	-
	Chorioepithelioma				

cont. ↓

Tabela 3. Nadaljevanje - continued

Šifra MKB*	Primarna lokacija	Spol	Število novih primerov	Registrirani samo iz zdrav- niških poročil o vzroku smrti	
ICD* No.	Primary site	Sex	Number of new cases	Število Registered from death certificates only Number	Odstotek** Per cent**
182	Maternica, telo, drugo Uterus, corpus, etc.	Ž	233	8	3
183	Jajčnik, jajcevod, drugo Ovary, Fallopian tube, etc.	Ž	174	4	2
184	Nožnica, vulva, drugo Vagina, vulva, etc.	Ž	41	2	5
185	Prostata Prostate	M	249	8	3
186	Modo Testis	M	53	-	-
187	Penis, obmodek, drugo Penis, epididymis, etc.	M	8	-	-
188	Mehur Bladder	M Ž	138 34	3 2	2 6
189	Ledvica, sečevod, drugo Kidney, ureter, etc.	M Ž	69 63	1 2	1 3
190	Oko Eye	M Ž	10 10	- -	- -
191	Možgani Brain	M Ž	42 45	2 3	5 7
192	Živčevje, drugo Nervous system, other	M Ž	3 3	- -	- -
193	Ščitnica Thyroid	M Ž	16 44	- -	- -
194	Endokrine žleze, druge Endocrine glands, other	M Ž	3 3	- -	- -
195	Slabo opredeljena lokaliz. Ill-defined site	M Ž	5 27	1 5	19
196	Metastaze v bezgavkah Lymph node metastases	M Ž	12 14	- -	- -
197	Met. v dihalih, prebavilih Respiratory, digestive tract met.	M Ž	60 54	6 7	10 13
198	Metastaze, drugje Metastases, other	M Ž	25 15	- -	- -
199	Malignomi, neopredeljeni Malignancies, unspecified	M Ž	68 54	8 16	12 30

cont. ↓

Tabela 3. Nadaljevanje - continued

Šifra MKB*	Primarna lokacija	Spol	Število novih primerov	Registrirani samo iz zdrav- niških poročil o vzroku smrti	
ICD* No.	Primary site	Sex	Number of new cases	Število Registered from death certificates only Number	Odstotek** Per cent**
200	Ne-Hodgkinovi limfomi	M	49	-	-
202	Non-Hodgkin's lymphomas	Ž	54	-	-
201	Hodgkinov limfom	M	19	-	-
	Hodgkin's disease	Ž	12	-	-
203	Plazmacitom	M	23	1	4
	Plasmacytoma	Ž	33	-	-
204.0	Levkemija, limfat., akutna	M	16	-	-
	Leukaemia, lymphatic acute	Ž	17	-	-
204.1	Levkemija, limfat., kronična	M	32	2	6
	Leukaemia, lymphatic chronic	Ž	33	1	3
205	Levkemija, mieloična	M	23	-	-
	Leukaemia, myeloic	Ž	22	-	-
206	Levkemija, monocitna	M	3	-	-
	Leukaemia, monocytic	Ž	2	-	-
207	Levkemije, druge	M	1	-	-
	Leukaemias, other	Ž	5	-	-
208	Policitemija, prava	M	1	-	-
	Polycythemia vera	Ž	8	-	-
209	Mielofibroza	M	4	-	-
	Myelofibrosis	Ž	5	-	-
Zgoraj neupoštevani					
Not included above					
-	Dojka, in situ	Ž	12	-	-
	Breast, in situ				
2340	Maternica, vrat, in situ	Ž	226	-	-
	Uterus, cervix, in situ				
2250	Možgani, benigni tumor	M	9	-	-
	Brain, benign tumor	Ž	18	-	-
2381	Možgani, neopredeljeno	M	8	1	-
	Brain, unspecified	Ž	4	-	-

* Mednarodna klasifikacija bolezni, osma revizija, 1965
International Classification of Diseases, Eighth Revision, 1965

** Odstotki niso računani pri številih pod 15
Percentages are not calculated for less than 15 cases

Tabela 4. Število novih primerov raka po lokaciji, spolu in starosti - Slovenija 1992

Table 4. Number of new cancer cases by site, sex, and age - Slovenia 1992

Šifra MKB	Lokacija Site	Spol Sex	Vse starosti All ages	Starost Age																		
				0-	5-	10-	15-	20-	25-	30-	35-	40-	45-	50-	55-	60-	65-	70-	75-	80+	?	
140	Vse lokacije	Skupaj	6 885	19	17	17	26	34	67	91	183	311	375	546	816	1048	1025	754	686	870	-	
209	All sites	Total																				
		Moški	3 511	8	9	8	15	25	35	33	81	126	177	279	470	613	541	388	327	376	-	
		Male																				
		Ženske	3 374	11	8	9	11	9	32	58	102	185	198	267	346	435	484	366	359	494	-	
		Female																				
140	Ustnica	M	29	-	-	-	-	-	-	1	-	2	1	6	3	4	5	5	2	-	-	
	Lip	Ž	10	-	-	-	-	-	-	1	-	-	-	-	-	1	1	1	2	4	-	
141	Jezik	M	43	-	-	-	-	-	-	1	-	4	5	7	7	8	8	2	1	-	-	
	Tongue	Ž	7	-	-	-	-	-	-	-	-	-	-	-	2	1	-	-	1	3	-	
142	Slinavke	M	8	-	-	-	-	-	-	1	-	1	-	1	-	1	1	2	-	1	-	
	Salivary glands	Ž	7	-	-	-	-	-	-	-	1	1	1	-	-	1	1	1	1	-	-	
143	Dlesni	M	6	-	-	-	-	-	-	-	-	1	-	1	1	1	2	-	-	-	-	
	Gum	Ž	2	-	-	-	-	-	-	-	-	-	-	-	-	-	1	1	-	-	-	
144	Ustno dno	M	38	-	-	-	-	-	-	-	3	3	4	6	8	6	3	2	2	1	-	
	Floor of mouth	Ž	4	-	-	-	-	-	-	-	-	1	-	1	1	1	-	-	-	-	-	
145	Usta, drugo	M	26	-	-	-	-	-	1	-	-	3	7	4	3	5	2	1	-	-	-	
	Mouth, other parts	Ž	5	-	-	-	-	-	-	-	-	-	-	-	2	2	-	-	1	-	-	
146	Orofarinks	M	93	-	-	-	-	-	-	-	1	7	16	19	19	15	9	4	1	2	-	
	Oropharynx	Ž	8	-	-	-	-	-	-	-	-	1	1	-	-	2	-	1	1	2	-	
147	Epifarinks	M	8	-	-	1	-	-	-	-	-	-	2	-	2	1	2	-	-	-	-	
	Epipharynx	Ž	3	-	-	-	-	-	-	-	-	-	1	-	1	-	-	1	-	-	-	
148	Hipofarinks	M	45	-	-	-	-	-	-	-	2	5	10	4	7	6	8	2	1	-	-	
	Hypopharynx	Ž	4	-	-	-	-	-	-	-	-	-	-	1	3	-	-	-	-	-	-	
149	Žrelo, neoznačeno	M	1	-	-	-	-	-	-	-	-	-	-	-	1	-	-	-	-	-	-	
	Pharynx, not specified	Ž	-	-	-	-	-	-	-	-	-	-	-	-	-	-	-	-	-	-	-	
150	Požiralnik	M	86	-	-	-	-	-	-	-	-	4	5	10	15	15	17	7	4	9	-	
	Esophagus	Ž	18	-	-	-	-	-	-	1	-	-	1	1	1	2	2	2	1	7	-	
151	Želodec	M	306	-	-	-	1	1	1	3	9	12	8	28	37	38	55	47	33	33	-	
	Stomach	Ž	192	-	-	-	-	-	1	2	3	4	6	8	12	24	34	20	26	52	-	
152	Tanko črevo	M	5	-	-	-	-	-	-	-	-	-	-	-	1	2	1	-	-	1	-	
	Small intestine	Ž	4	-	-	-	-	-	-	-	-	-	-	1	-	1	2	-	-	-	-	
153	Debelo črevo	M	200	-	-	-	-	-	-	1	2	5	5	13	26	26	41	29	27	25	-	
	Colon	Ž	198	-	-	-	-	1	-	2	2	7	5	17	13	24	35	28	27	37	-	
154	Rektum	M	216	-	-	-	-	-	-	-	1	6	12	17	29	45	29	29	23	25	-	
	Rectum, anus	Ž	180	-	-	-	-	-	-	1	-	2	7	10	15	21	31	27	30	36	-	

cont. ↓

Tabela 4. Nadaljevanje - continued

Šifra MKB	Lokacija	Spol	Vse starosti	Starost																	
				0-	5-	10-	15-	20-	25-	30-	35-	40-	45-	50-	55-	60-	65-	70-	75-	80+	?
ICD No.	Site	Sex	All ages	Age																	
155	Jetra	M	42	-	-	-	-	-	-	-	1	-	1	3	7	11	10	4	4	1	-
	Liver	Ž	19	1	-	-	-	-	-	-	-	-	-	2	2	3	4	3	-	4	-
156	Žolčnik, žolčni vodi	M	37	-	-	-	-	-	-	-	1	1	-	3	4	8	9	-	5	6	-
	Gall bladder, bile ducts	Ž	70	-	-	-	-	-	-	-	-	3	2	1	3	10	13	9	10	19	-
157	Trebušna slinavka	M	108	-	-	-	-	-	-	1	3	-	2	9	16	16	18	14	13	16	-
	Pancreas	Ž	103	-	-	-	-	-	-	2	3	2	6	6	14	15	11	23	21	-	-
158	Retro-, peritonej	M	11	-	-	-	-	2	1	-	2	2	-	-	2	-	1	1	-	-	-
	Retro-, peritoneum	Ž	8	-	-	-	-	1	-	-	-	1	2	2	-	1	-	1	-	-	-
159	Prebavila, drugo	M	-	-	-	-	-	-	-	-	-	-	-	-	-	-	-	-	-	-	-
	Digestive organs, other	Ž	6	-	-	-	-	-	-	1	-	-	-	-	-	1	-	1	3	-	-
160	Nos, obnosne votl., drugo	M	8	-	-	-	1	-	-	-	-	-	-	2	3	-	-	2	-	-	-
	Nose, sinuses, etc.	Ž	10	-	-	-	-	-	-	1	1	-	1	-	1	1	1	1	3	-	-
161	Grlo	M	108	-	-	-	-	-	-	4	8	5	9	24	17	23	8	4	6	-	-
	Larynx	Ž	10	-	-	-	-	-	-	-	1	-	-	2	2	2	1	1	1	-	-
162	Sapnik, sapnica, pljuča	M	781	-	-	-	-	1	3	10	19	44	59	129	194	139	75	47	61	-	-
	Trachea, bronchus, lung	Ž	159	-	-	-	-	-	1	1	4	9	8	19	26	29	20	20	22	-	-
163	Plevra, mediastin., drugo	M	12	-	-	-	-	1	-	-	1	-	3	2	2	1	1	1	-	-	-
	Pleura, mediastinum, etc.	Ž	3	-	-	-	-	-	-	-	-	-	1	-	-	1	-	-	1	-	-
170	Kosti	M	2	-	-	-	1	-	1	-	-	-	-	-	-	-	-	-	-	-	-
	Bone	Ž	11	-	1	-	1	1	-	1	1	-	1	1	1	2	-	-	1	-	-
171	Mehka tkiva	M	13	-	-	1	-	1	1	-	1	-	3	-	2	1	-	2	-	1	-
	Soft tissues	Ž	16	1	-	3	-	-	-	1	-	1	2	2	2	2	1	1	-	-	-
172	Koža, maligni melanom	M	63	-	-	-	1	-	1	3	5	6	5	12	10	9	3	4	3	-	-
	Skin, malignant melanoma	Ž	81	-	-	-	-	2	7	10	11	3	10	12	10	4	3	3	6	-	-
173	Koža, drugi malignomi	M	277	-	-	-	-	1	-	2	8	8	15	26	24	40	40	39	35	39	-
	Skin, other malignancies	Ž	334	-	1	-	-	1	1	7	10	12	24	36	40	48	43	42	69	-	-
174	Dojka	M	7	-	-	-	-	1	-	-	1	1	-	-	1	1	1	-	1	-	-
	Breast	Ž	720	-	-	-	-	6	9	30	65	80	72	83	89	99	71	55	61	-	-
180	Maternica, vrat	Ž	176	-	-	-	-	-	14	17	24	33	14	16	6	13	13	9	7	10	-
	Uterus, cervix																				
181	Horioepiteliom	Ž	1	-	-	-	-	-	-	-	-	-	-	1	-	-	-	-	-	-	-
	Chorioepithelioma																				
182	Maternica, telo, drugo	Ž	233	-	-	-	-	-	-	-	-	5	8	19	39	41	40	36	24	21	-
	Uterus, corpus, etc.																				
183	Jajčnik, jajcevod, drugo	Ž	174	-	-	2	2	1	-	4	4	14	12	27	28	31	19	12	10	8	-
	Ovary, Fallopian tube, etc.																				
184	Nožnica, vulva, drugo	Ž	41	-	-	-	-	-	1	1	2	2	4	3	2	8	4	2	12	-	-
	Vagina, vulva, etc.																				

cont. ↓

Tabela 4. Nadaljevanje - continued

Šifra MKB	Lokacija	Spol	Vse starosti	Starost																			
				0-	5-	10-	15-	20-	25-	30-	35-	40-	45-	50-	55-	60-	65-	70-	75-	80+	?		
ICD No.	Site	Sex	All ages	Age																			
185	Prostata Prostate	M	249	-	-	-	-	-	-	-	-	-	-	-	1	5	13	35	28	43	48	76	-
186	Modo Testis	M	53	-	-	-	3	9	14	10	5	9	-	-	-	1	-	-	-	1	1	-	-
187	Penis, območek, drugo Penis, epididymis, etc.	M	8	-	-	-	-	-	-	1	1	-	1	-	-	1	2	1	1	-	-	-	-
188	Mehur Bladder	M	138	-	-	-	-	-	-	1	1	3	6	12	24	21	15	28	27	-	-	-	-
		Ž	34	-	-	-	-	-	-	-	-	-	-	1	2	4	5	3	7	12	-	-	-
189	Ledvica, sečevod, drugo Kidney, ureter, etc.	M	69	1	-	-	-	1	-	-	2	6	5	6	6	11	11	11	5	4	-	-	
		Ž	63	-	1	-	-	-	-	1	-	1	3	7	9	8	8	7	10	8	-	-	-
190	Oko Eye	M	10	-	-	-	-	-	1	-	-	-	1	-	3	3	-	-	-	2	-	-	-
		Ž	10	1	1	-	-	-	-	-	-	-	1	1	1	2	1	1	1	-	-	-	-
191	Možgani Brain	M	42	-	2	2	1	2	2	2	3	2	1	1	8	6	4	-	6	-	-	-	-
		Ž	45	1	-	1	-	1	1	1	2	2	6	4	8	7	6	1	4	-	-	-	-
192	Živčevje, drugo Nervous system, other	M	3	2	-	-	-	-	-	-	1	-	-	-	-	-	-	-	-	-	-	-	-
		Ž	3	-	1	-	-	-	-	-	1	-	-	-	-	-	-	1	-	-	-	-	-
193	Ščitnica Thyroid	M	16	-	-	1	1	-	1	2	2	2	-	1	2	3	-	-	-	1	-	-	-
		Ž	44	-	-	-	1	1	3	2	2	5	6	3	1	6	3	5	-	6	-	-	-
194	Endokrine žleze, druge Endocrine glands, other	M	3	-	-	-	-	-	-	-	1	-	-	1	-	-	-	1	-	-	-	-	-
		Ž	3	-	-	-	-	-	-	1	-	1	-	-	-	-	1	-	-	-	-	-	-
195	Slabo opred. lokaliz. Ill-defined site	M	5	-	-	-	-	-	-	-	-	-	-	1	-	1	1	-	-	1	-	-	-
		Ž	27	2	-	-	-	-	-	-	-	-	-	-	2	2	1	2	1	8	9	-	-
196	Metastaze v bezgavkah Lymph node metastases	M	12	-	-	-	-	-	-	-	2	-	2	-	1	2	2	-	-	3	-	-	-
		Ž	14	-	-	-	-	-	-	-	-	-	-	-	3	1	2	2	3	3	-	-	-
197	Met. v dihalih, prebavilih Respiratory, digestive tract met.	M	60	-	-	-	-	-	-	-	3	1	2	1	11	11	11	5	10	5	-	-	-
		Ž	54	-	-	-	-	-	-	-	-	-	-	1	1	3	5	9	11	9	15	-	-
198	Metastaze, drugje Metastases, other	M	25	-	-	-	-	1	-	-	-	2	2	3	4	5	5	2	-	1	-	-	-
		Ž	15	-	-	-	-	-	-	-	-	-	1	-	4	1	6	3	-	-	-	-	-
199	Malignomi, neopredeljeni Malignancies, unspecified	M	68	-	-	-	-	-	-	1	2	1	3	7	12	13	6	12	3	8	-	-	-
		Ž	54	-	-	-	-	-	-	1	1	1	1	5	5	5	4	10	6	15	-	-	-
200	Ne-Hodgkinovi limfomi	M	49	-	3	-	3	1	2	-	3	2	-	4	5	7	3	6	6	4	-	-	-
202	Non-Hodgkin's lymphomas	Ž	54	-	-	1	1	1	-	2	2	2	3	4	4	9	8	3	8	6	-	-	-
201	Hodgkinov limfom Hodgkin's disease	M	19	1	1	-	1	5	3	1	-	1	-	2	2	1	-	-	1	-	-	-	-
		Ž	12	-	-	-	3	2	1	1	2	1	1	-	1	-	-	-	-	-	-	-	-
203	Plazmacitom Plasmacytoma	M	23	-	-	-	-	-	-	-	-	-	-	-	1	3	7	2	4	2	4	-	-
		Ž	33	-	-	-	-	-	-	-	-	-	1	3	1	1	7	8	4	2	6	-	-

cont. ↓

Tabela 4. Nadaljevanje - continued

Šifra MKB	L o k a c i j a Site	Spol Sex	Vse starosti All ages	S t a r o s t A g e																		
				0-	5-	10-	15-	20-	25-	30-	35-	40-	45-	50-	55-	60-	65-	70-	75-	80+	?	
204.0	Levkemija, limfat. akutna Leukaemia, lymphatic, acute	M Ž	16 17	4 3	3 3	2 1	2 3	1 -	1 -	-	-	-	-	-	1	1	-	-	-	1	-	-
204.1	Levkemija, limfat. kron. Leukaemia, lymphatic, chronic	M Ž	32 33	-	-	-	-	-	-	-	2	-	1	1	2	4	9	6	3	4	-	-
205	Levkemija, mieloična Leukaemia, myeloidic	M Ž	23 22	-	-	1	-	1	2	2	3	-	2	1	1	3	1	2	1	3	-	-
206	Levkemija, monocitna Leukaemia, monocytic	M Ž	3 2	-	-	-	-	-	-	-	-	-	-	-	-	-	-	2	-	-	1	-
207	Levkemije, druge Leukaemias, other	M Ž	1 5	-	-	-	-	-	-	-	-	-	-	-	-	-	-	-	-	1	-	-
208	Policitemija, prava Polycythemia vera	M Ž	1 8	-	-	-	-	-	-	-	-	-	-	-	-	-	1	-	-	-	-	-
209	Mielofibroza Myelofibrosis	M Ž	4 5	-	-	-	-	-	-	-	-	-	-	-	2	-	1	-	-	1	-	-
Zgoraj neupoštevani Not included above																						
-	Dojka, in situ Breast, in situ	Ž	12	-	-	-	-	-	-	-	1	3	1	2	1	1	2	1	-	-	-	-
2340	Maternica, vrat, in situ Uterus, cervix, in situ	Ž	226	-	-	-	15	45	53	54	29	16	5	3	3	1	1	-	1	-	-	-
2250	Možgani, benigni tumor Brain, benign tumor	M Ž	9 18	-	-	-	-	-	1	-	-	-	1	4	2	-	-	-	1	-	-	-
2381	Možgani, neopredeljeno Brain, unspecified	M Ž	8 4	1	-	-	-	-	-	-	-	1	-	1	1	-	2	2	-	-	-	-

Tabela 5. Incidenca raka na 100 000 prebivalcev po lokaciji, spolu in starosti - Slovenija 1992

Table 5. Cancer incidence per 100 000 population by site, sex, and age - Slovenia 1992

Šifra MKB ICD Site No.	Lokacija Site	Spol Sex	Vse starosti All ages	Starost Age																	?
				0-4	5-9	10-14	15-19	20-24	25-29	30-34	35-39	40-44	45-49	50-54	55-59	60-64	65-69	70-74	75-79	80+	
140 209	Vse lokacije All sites	Skupaj Total	345.0	16.6	13.0	11.4	17.5	23.9	43.2	58.6	110.4	202.9	316.4	462.6	723.0	981.4	1211.0	1436.1	1750.7	1816.7	-
		Moški Male	362.6	13.6	13.4	10.4	19.7	34.9	45.3	42.3	95.1	160.0	295.1	472.2	868.9	1279.2	1708.7	2116.7	2426.9	2665.7	-
		Ženske Female	328.3	19.8	12.5	12.4	15.2	12.7	41.1	75.1	126.5	248.4	338.2	452.9	588.7	738.9	913.6	1071.1	1396.3	1462.2	-
140	Ustnica	M	3.0	-	-	-	-	-	-	1.3	-	2.5	1.7	10.2	5.5	8.3	15.8	27.3	14.8	-	-
	Lip	Ž	1.0	-	-	-	-	-	-	1.3	-	-	-	-	-	1.7	1.9	2.9	7.8	11.8	-
141	Jezik	M	4.4	-	-	-	-	-	-	1.3	-	5.1	8.3	11.8	12.9	16.7	25.3	10.9	7.4	-	-
	Tongue	Ž	0.7	-	-	-	-	-	-	-	-	-	-	-	3.4	1.7	-	-	3.9	8.9	-
142	Slinavke	M	0.8	-	-	-	-	-	-	1.3	-	1.3	-	1.7	-	2.1	3.2	10.9	-	7.1	-
	Salivary glands	Ž	0.7	-	-	-	-	-	-	-	1.2	1.3	1.7	-	-	1.7	1.9	2.9	3.9	-	-
143	Dlesni	M	0.6	-	-	-	-	-	-	-	-	1.3	-	1.7	1.8	2.1	6.3	-	-	-	-
	Gum	Ž	0.2	-	-	-	-	-	-	-	-	-	-	-	-	-	1.9	2.9	-	-	-
144	Ustno dno	M	3.9	-	-	-	-	-	-	-	3.5	3.8	6.7	10.2	14.8	12.5	9.5	10.9	14.8	7.1	-
	Floor of mouth	Ž	0.4	-	-	-	-	-	-	-	-	1.3	-	1.7	1.7	1.7	-	-	-	-	-
145	Usta, drugo	M	2.7	-	-	-	-	-	1.3	-	-	3.8	11.7	6.8	5.5	10.4	6.3	5.5	-	-	-
	Mouth, other parts	Ž	0.5	-	-	-	-	-	-	-	-	-	-	-	3.4	3.4	-	-	3.9	-	-
146	Orofarinks	M	9.6	-	-	-	-	-	-	-	1.2	8.9	26.7	32.2	35.1	31.3	28.4	21.8	7.4	14.2	-
	Oropharynx	Ž	0.8	-	-	-	-	-	-	-	-	1.3	1.7	-	-	3.4	-	2.9	3.9	5.9	-
147	Epifarinks	M	0.8	-	-	1.3	-	-	-	-	-	-	3.3	-	3.7	2.1	6.3	-	-	-	-
	Epipharynx	Ž	0.3	-	-	-	-	-	-	-	-	-	1.7	-	1.7	-	-	2.9	-	-	-

cont ↓

Tabela 5. Nadaljevanje - continued

Šifra MKB	Lokacija Site	Spol Sex	Vse starosti All ages	Starost Age																	?
				0-4	5-9	10-14	15-19	20-24	25-29	30-34	35-39	40-44	45-49	50-54	55-59	60-64	65-69	70-74	75-79	80+	
148	Hipofarinks Hypopharynx	M	4.6	-	-	-	-	-	-	-	2.3	6.3	16.7	6.8	12.9	12.5	25.3	10.9	7.4	-	-
		Ž	0.4	-	-	-	-	-	-	-	-	-	-	1.7	5.1	-	-	-	-	-	-
149	Žrelo, neoznačeno Pharynx, not specified	M	0.1	-	-	-	-	-	-	-	-	-	-	1.8	-	-	-	-	-	-	-
		Ž	-	-	-	-	-	-	-	-	-	-	-	-	-	-	-	-	-	-	-
150	Požiralnik Esophagus	M	8.9	-	-	-	-	-	-	-	-	5.1	8.3	16.9	27.7	31.3	53.7	38.2	29.7	63.8	-
		Ž	1.8	-	-	-	-	-	-	1.3	-	-	1.7	1.7	1.7	3.4	3.8	5.9	3.9	20.7	-
151	Želodec Stomach	M	31.6	-	-	-	1.3	1.4	1.3	3.8	10.6	15.2	13.3	47.4	68.4	79.3	173.7	256.4	244.9	234.0	-
		Ž	18.7	-	-	-	-	-	1.3	2.6	3.7	5.4	10.2	13.6	20.4	40.8	64.2	58.5	101.1	153.9	-
152	Tanko črevo Small intestine	M	0.5	-	-	-	-	-	-	-	-	-	-	-	1.8	4.2	3.2	-	-	7.1	-
		Ž	0.4	-	-	-	-	-	-	-	-	-	-	1.7	-	-	1.7	3.8	-	-	-
153	Debelo črevo Colon	M	20.7	-	-	-	-	-	-	1.3	2.3	6.3	8.3	22.0	48.1	54.3	129.5	158.2	200.4	177.2	-
		Ž	19.3	-	-	-	-	1.4	-	2.6	2.5	9.4	8.5	23.8	22.1	40.8	66.1	81.9	105.0	109.5	-
154	Rektum Rectum, anus	M	22.3	-	-	-	-	-	-	-	1.2	7.6	20.0	23.8	53.6	93.9	91.6	158.2	170.7	177.2	-
		Ž	17.5	-	-	-	-	-	-	1.3	-	2.7	12.0	17.0	25.5	35.7	58.5	79.0	116.7	106.6	-
155	Jetra Liver	M	4.3	-	-	-	-	-	-	-	1.2	-	1.7	5.1	12.9	23.0	31.6	21.8	29.7	7.1	-
		Ž	1.8	1.8	-	-	-	-	-	-	-	-	-	-	3.4	3.4	5.1	7.6	8.8	-	11.8
156	Žolčnik, žolčni vodi Gall bladder, bile ducts	M	3.8	-	-	-	-	-	-	-	1.2	1.3	-	5.1	7.4	16.7	28.4	-	37.1	42.5	-
		Ž	6.8	-	-	-	-	-	-	-	-	4.0	3.4	1.7	5.1	17.0	24.5	26.3	38.9	56.2	-
157	Trebušna slinavka Pancreas	M	11.2	-	-	-	-	-	-	1.3	3.5	-	3.3	15.2	29.6	33.4	56.9	76.4	96.5	113.4	-
		Ž	10.0	-	-	-	-	-	-	-	2.5	4.0	3.4	10.2	10.2	23.8	28.3	32.2	89.5	62.2	-
158	Retro-, peritonej Retro-, peritoneum	M	1.1	-	-	-	-	-	2.6	1.3	-	2.5	3.3	-	-	4.2	-	5.5	7.4	-	-
		Ž	0.8	-	-	-	-	-	1.3	-	-	-	1.7	3.4	3.4	-	1.9	-	3.9	-	-
159	Prebavila, drugo Digestive organs, other	M	-	-	-	-	-	-	-	-	-	-	-	-	-	-	-	-	-	-	-
		Ž	0.6	-	-	-	-	-	-	-	1.2	-	-	-	-	-	-	1.9	-	3.9	8.9

cont. ↓

Tabela 5. Nadaljevanje - continued

Šifra MKB	Lokacija	Spol	Vse starosti	Starost																	?	
				0-4	5-9	10-14	15-19	20-24	25-29	30-34	35-39	40-44	45-49	50-54	55-59	60-64	65-69	70-74	75-79	80+		
ICD No.	Site	Sex	All ages	Age																		
160	Nos, obnosne votl., drugo Nose, sinuses, etc.	M	0.8	-	-	-	1.3	-	-	-	-	-	-	-	3.4	5.5	-	-	10.9	-	-	-
		Ž	1.0	-	-	-	-	-	-	-	1.2	1.3	-	1.7	-	1.7	1.9	2.9	3.9	8.9	-	-
161	Grlo Larynx	M	11.2	-	-	-	-	-	-	-	4.7	10.2	8.3	15.2	44.4	35.5	72.6	43.6	29.7	42.5	-	
		Ž	1.0	-	-	-	-	-	-	-	-	1.3	-	-	3.4	3.4	3.8	2.9	3.9	3.0	-	-
162	Sapnik, sapnica, pljuča Trachea, bronchus, lung	M	80.7	-	-	-	-	-	1.3	3.8	11.7	24.1	73.4	99.9	238.5	404.8	439.0	409.2	348.8	432.5	-	
		Ž	15.5	-	-	-	-	-	-	1.3	1.2	5.4	15.4	13.6	32.3	44.2	54.7	58.5	77.8	65.1	-	-
163	Plevra, mediastin., drugo Pleura, mediastinum, etc.	M	1.2	-	-	-	-	-	1.3	-	-	1.3	-	5.1	3.7	4.2	3.2	5.5	7.4	-	-	
		Ž	0.3	-	-	-	-	-	-	-	-	-	-	-	1.7	-	-	1.9	-	-	3.0	-
170	Kosti Bone	M	0.2	-	-	-	1.3	-	1.3	-	-	-	-	-	-	-	-	-	-	-	-	
		Ž	1.1	-	1.6	-	1.4	1.4	-	1.3	1.2	-	1.7	1.7	1.7	3.4	-	-	3.9	-	-	-
171	Mehka tkiva Soft tissues	M	1.3	-	-	1.3	-	1.4	1.3	-	1.2	-	5.0	-	3.7	2.1	-	10.9	-	7.1	-	
		Ž	1.6	1.8	-	4.1	-	-	-	-	1.2	-	1.7	3.4	3.4	3.4	3.8	2.9	3.9	-	-	-
172	Koža, maligni melanom Skin, malignant melanoma	M	6.5	-	-	-	1.3	-	1.3	1.3	3.5	6.3	10.0	8.5	22.2	20.9	28.4	16.4	29.7	21.3	-	
		Ž	7.9	-	-	-	-	-	2.6	9.1	12.4	14.8	5.1	17.0	20.4	17.0	7.6	8.8	11.7	17.8	-	-
173	Koža, drugi malignomi Skin, other malignancies	M	28.6	-	-	-	-	1.4	-	2.6	9.4	10.2	25.0	44.0	44.4	83.5	126.3	212.8	259.8	276.5	-	
		Ž	32.5	-	1.6	-	-	-	1.3	1.3	8.7	13.4	20.5	40.7	61.3	67.9	90.6	125.8	163.4	204.2	-	-
174	Dojka Breast	M	0.7	-	-	-	-	1.4	-	-	1.2	1.3	-	-	1.8	2.1	3.2	-	7.4	-	-	
		Ž	70.1	-	-	-	-	-	7.7	11.7	37.2	87.3	136.7	122.1	141.2	151.2	186.9	207.8	213.9	180.6	-	-
180	Maternica, vrat Uterus, cervix	Ž	17.1	-	-	-	-	-	18.0	22.0	29.8	44.3	23.9	27.1	10.2	22.1	24.5	26.3	27.2	29.6	-	
181	Horioepiteliom Chorioepithelioma	Ž	0.1	-	-	-	-	-	-	-	-	-	-	-	1.7	-	-	-	-	-	-	
182	Maternica, telo, drugo Uterus, corpus, etc.	Ž	22.7	-	-	-	-	-	-	-	-	-	6.7	13.7	32.2	66.4	69.6	75.5	105.3	93.3	62.2	

cont. ↓

Tabela 5. Nadaljevanje - continued

Šifra MKB	Lokacija Site	Spol Sex	Vse starosti All ages	Starost Age																	?	
				0-4	5-9	10-14	15-19	20-24	25-29	30-34	35-39	40-44	45-49	50-54	55-59	60-64	65-69	70-74	75-79	80+		
183	Jajčnik, jajcevod, drugo Ovary, Fallopian tube, etc.	Ž	16.9	-	-	2.8	2.8	1.4	-	5.2	5.0	18.8	20.5	45.8	47.6	52.7	35.9	35.1	38.9	23.7	-	
184	Nožnica, vulva, drugo Vagina, vulva, etc.	Ž	4.0	-	-	-	-	-	-	1.3	1.2	2.7	3.4	6.8	5.1	3.4	15.1	11.7	7.8	35.5	-	
185	Prostata Prostate	M	25.7	-	-	-	-	-	-	-	-	-	1.7	8.5	24.0	73.0	88.4	234.6	356.2	538.8	-	
186	Modo Testis	M	5.5	-	-	-	3.9	12.6	18.1	12.8	5.9	11.4	-	-	-	2.1	-	-	7.4	7.1	-	
187	Penis, obmodek, drugo Penis, epididymis, etc.	M	0.8	-	-	-	-	-	-	-	1.2	1.3	-	1.7	-	-	3.2	10.9	7.4	7.1	-	
188	Mehur Bladder	M	14.3	-	-	-	-	-	-	-	1.2	1.3	5.0	10.2	22.2	50.1	66.3	81.8	207.8	191.4	-	
		Ž	3.3	-	-	-	-	-	-	-	-	-	-	1.7	3.4	6.8	9.4	8.8	27.2	35.5	-	
189	Ledvica, sečevod, drugo Kidney, ureter, etc.	M	7.1	1.7	-	-	-	1.4	-	-	2.3	7.6	8.3	10.2	11.1	23.0	34.7	60.0	37.1	28.4	-	
		Ž	6.1	-	1.6	-	-	-	-	-	1.3	-	1.3	5.1	11.9	15.3	13.6	15.1	20.5	38.9	23.7	-
190	Oko Eye	M	1.0	-	-	-	-	-	1.3	-	-	-	1.7	-	5.5	6.3	-	-	-	-	14.2	-
		Ž	1.0	1.8	1.6	-	-	-	-	-	-	-	-	1.7	1.7	1.7	3.4	1.9	2.9	3.9	-	-
191	Možgani Brain	M	4.3	-	3.0	2.6	1.3	2.8	2.6	2.6	3.5	2.5	1.7	1.7	14.8	12.5	12.6	-	44.5	-	-	
		Ž	4.4	1.8	-	1.4	-	1.4	1.3	1.3	2.5	2.7	10.2	6.8	13.6	11.9	11.3	2.9	15.6	-	-	
192	Živčevje, drugo Nervous system, other	M	0.3	3.4	-	-	-	-	-	-	1.2	-	-	-	-	-	-	-	-	-	-	-
		Ž	0.3	-	1.6	-	-	-	-	-	-	1.2	-	-	-	-	-	-	2.9	-	-	-
193	Ščitnica Thyroid	M	1.7	-	-	1.3	1.3	-	1.3	2.6	2.3	2.5	-	1.7	3.7	6.3	-	-	-	-	7.1	-
		Ž	4.3	-	-	-	1.4	1.4	3.8	2.6	2.5	6.7	10.2	5.1	1.7	10.2	5.7	14.6	-	-	17.8	-
194	Endokrine žleze, druge Endocrine glands, other	M	0.3	-	-	-	-	-	-	-	1.2	-	-	1.7	-	-	-	5.5	-	-	-	-
		Ž	0.3	-	-	-	-	-	-	-	1.3	-	1.3	-	-	-	-	1.9	-	-	-	-

cont. ↓

Tabela 5. Nadaljevanje - continued

Šifra MKB	Lokacija Site	Spol Sex	Vse starosti All ages	Starost Age																			
				0-4	5-9	10-14	15-19	20-24	25-29	30-34	35-39	40-44	45-49	50-54	55-59	60-64	65-69	70-74	75-79	80+	?		
195	Slabo opredeljena lokaliz. Ill-defined site	M	0.5	-	-	-	-	-	-	-	-	-	-	-	1.7	-	1.8	2.1	3.2	-	-	7.1	-
		Ž	2.6	3.6	-	-	-	-	-	-	-	-	-	-	-	-	3.4	3.4	1.7	3.8	2.9	31.1	26.6
196	Metastaze v bezgavkah Lymph node metastases	M	1.2	-	-	-	-	-	-	-	2.3	-	3.3	-	1.8	4.2	6.3	-	-	-	-	21.3	-
		Ž	1.4	-	-	-	-	-	-	-	-	-	-	-	-	5.1	1.7	3.8	5.9	11.7	8.9	-	-
197	Met. v dihalih, prebavilih Respiratory, digestive tract met.	M	6.2	-	-	-	-	-	-	-	3.5	1.3	3.3	1.7	20.3	23.0	34.7	27.3	74.2	35.4	-	-	
		Ž	5.3	-	-	-	-	-	-	-	-	-	-	1.7	1.7	5.1	8.5	17.0	32.2	35.0	44.4	-	-
198	Metastaze, druge Metastases, other	M	2.6	-	-	-	-	1.4	-	-	-	2.5	3.3	5.1	7.4	10.4	15.8	10.9	-	7.1	-	-	
		Ž	1.5	-	-	-	-	-	-	-	-	-	-	1.7	-	6.8	1.7	11.3	8.8	-	-	-	
199	Malignomi, neopredeljeni Malignancies, unspecified	M	7.0	-	-	-	-	-	-	1.3	2.3	1.3	5.0	11.8	22.2	27.1	19.0	65.5	22.3	56.7	-	-	
		Ž	5.3	-	-	-	-	-	-	1.3	1.2	1.3	1.7	8.5	8.5	8.5	7.6	29.3	23.3	44.4	-	-	
200 +202	Ne-Hodgkinovi limfomi Non-Hodgkin's lymphomas	M	5.1	-	4.5	-	3.9	1.4	2.6	-	3.5	2.5	-	6.8	9.2	14.6	9.5	32.7	44.5	28.4	-	-	
		Ž	5.3	-	-	1.4	1.4	1.4	-	2.6	2.5	2.7	5.1	6.8	6.8	15.3	15.1	8.8	31.1	17.8	-	-	
201	Hodgkinov limfom Hodgkin's disease	M	2.0	1.7	1.5	-	1.3	7.0	3.9	1.3	-	1.3	-	3.4	3.7	2.1	-	-	7.4	-	-	-	
		Ž	1.2	-	-	-	4.1	2.8	1.3	1.3	2.5	1.3	1.7	-	1.7	-	-	-	-	-	-	-	
203	Plazmicitom Plasmacytoma	M	2.4	-	-	-	-	-	-	-	-	-	-	-	1.7	5.5	14.6	6.3	21.8	14.8	28.4	-	
		Ž	3.2	-	-	-	-	-	-	-	-	-	1.3	5.1	1.7	1.7	11.9	15.1	11.7	7.8	17.8	-	
204.0	Levkemija, limfatična, ak. Leukaemia, lymphatic, ac.	M	1.7	6.8	4.5	2.6	2.6	1.4	1.3	-	-	-	-	1.7	1.8	-	-	-	7.4	-	-	-	
		Ž	1.7	5.4	4.7	1.4	4.1	-	-	-	-	-	2.7	-	1.7	1.7	1.9	2.9	3.9	-	-	-	
204.1	Levkemija, limfatična, kron. Leukaemia, lymphatic, chron.	M	3.3	-	-	-	-	-	-	-	2.3	-	1.7	1.7	3.7	8.3	28.4	32.7	22.3	28.4	-	-	
		Ž	3.2	-	-	-	-	-	-	-	1.2	-	-	-	3.4	10.2	15.1	14.6	11.7	23.7	-	-	
205	Levkemija, mieloična Leukaemia, myeloid	M	2.4	-	-	1.3	-	1.4	2.6	2.6	3.5	-	3.3	1.7	1.8	6.3	3.2	10.9	7.4	21.3	-	-	
		Ž	2.1	3.6	-	1.4	-	1.4	1.3	1.3	2.5	-	1.7	1.7	3.4	3.4	-	2.9	15.6	8.9	-	-	
206	Levkemija, monocitna Leukaemia, monocytic	M	0.3	-	-	-	-	-	-	-	-	-	-	-	-	-	6.3	-	-	7.1	-	-	
		Ž	0.2	-	-	-	-	-	-	-	-	-	-	1.7	-	-	1.7	-	-	-	-	-	

cont. ↓

Tabela 5. Nadaljevanje - continued

Šifra MKB	Lokacija	Spol	Vse starosti	Starost																?	
				0-4	5-9	10-14	15-19	20-24	25-29	30-34	35-39	40-44	45-49	50-54	55-59	60-64	65-69	70-74	75-79		80+
ICD Site No.		Sex	All ages	Age																	
207	Levkemije, druge	M	0.1	-	-	-	-	-	-	-	-	-	-	-	-	-	-	-	7.4	-	-
	Leukaemias, other	Ž	0.5	-	-	-	-	-	-	-	-	1.3	-	-	1.7	1.7	1.9	-	-	3.0	-
208	Policitemija, prava	M	0.1	-	-	-	-	-	-	-	-	-	-	-	-	-	3.2	-	-	-	-
	Polycythemia vera	Ž	0.8	-	-	-	-	-	-	-	-	-	-	1.7	-	3.4	7.6	2.9	-	-	-
209	Mielofibroza	M	0.4	-	-	-	-	-	-	-	-	-	-	3.4	-	2.1	-	-	7.4	-	-
	Myelofibrosis	Ž	0.5	-	-	-	-	-	1.3	-	-	-	-	1.7	3.4	-	-	-	3.9	-	-
Zgoraj neupoštevani																					
Not included above																					
-	Dojka, in situ	Ž	1.2	-	-	-	-	-	-	-	1.2	4.0	1.7	3.4	1.7	1.7	3.8	2.9	-	-	-
	Breast, in situ																				
2340	Maternica, vrat, in situ	Ž	22.0	-	-	-	-	21.2	57.7	68.6	67.0	38.9	27.3	8.5	5.1	5.1	1.9	2.9	-	3.0	-
	Uterus, cervix, in situ																				
2250	Možgani, benigni tumor	M	0.9	-	-	-	-	-	-	1.3	-	-	-	1.7	7.4	4.2	-	-	-	7.1	-
	Brain, benign tumor	Ž	1.8	-	-	-	-	-	-	1.2	-	-	3.4	6.8	6.8	6.8	1.9	-	-	5.9	-
2381	Možgani, neopredeljeno	M	0.8	1.7	-	-	-	-	-	-	-	-	1.7	-	1.8	2.1	-	10.9	14.8	-	-
	Brain, unspecified	Ž	0.4	-	-	-	1.4	-	-	1.3	-	-	1.7	-	-	1.7	-	-	-	-	-

Tabela 6. Število novih primerov raka po zdravstvenih regijah in območjih zdravstvenih domov, po najpogostejših lokacijah in spolu - Slovenija 1992

Table 6. Number of new cancer cases by health regions and subregions, by most frequent sites and sex - Slovenia 1992

Zdravstvena regija Zdravstveni dom	Spol	Skupaj 140 - 209	L o k a c i j a (šifre MKB)*									Druge lokal. 234*	
			151	153	154	162	173	174	180	182	185		
Health region Subregion	Sex	All sites	Site (ICD No.)*									Other sites	
Slovenija skupaj	M	3 511	306	200	216	781	277	7	-	-	249	1475	-
Slovenija, total	Ž	3 374	192	198	180	159	334	720	176	233	-	1182	226
Celje	M	386	38	20	31	92	28	1	-	-	16	160	-
	Ž	398	28	29	28	16	46	79	16	37	-	119	12
ZD Celje	M	386	38	20	31	92	28	1	-	-	16	160	-
	Ž	398	28	29	28	16	46	79	16	37	-	119	12
Gorica	M	202	17	12	8	42	13	-	-	-	14	96	-
	Ž	182	16	12	12	10	6	41	1	10	-	74	15
ZD Nova Gorica	M	202	17	12	8	42	13	-	-	-	14	96	-
	Ž	182	16	12	12	10	6	41	1	10	-	74	15
Koper	M	269	21	13	16	49	27	1	-	-	19	123	-
	Ž	253	12	12	8	17	24	72	15	12	-	81	8
ZD Koper	M	153	11	4	8	30	19	-	-	-	9	72	-
	Ž	137	6	6	3	10	19	35	14	6	-	38	4
ZD Postojna	M	116	10	9	8	19	8	1	-	-	10	51	-
	Ž	116	6	6	5	7	5	37	1	6	-	43	4
Kranj	M	339	20	21	19	78	25	1	-	-	25	150	-
	Ž	333	19	21	19	14	26	63	19	21	-	131	31
ZD Jesenice	M	130	7	11	4	29	12	1	-	-	10	56	-
	Ž	133	11	10	7	7	16	23	8	8	-	43	12
ZD Kranj	M	209	13	10	15	49	13	-	-	-	15	94	-
	Ž	200	8	11	12	7	10	40	11	13	-	88	19
Ljubljana	M	988	91	63	54	219	56	4	-	-	70	431	-
	Ž	1026	51	55	47	50	64	235	57	73	-	394	98
ZD Domžale	M	117	7	13	17	26	3	-	-	-	6	45	-
	Ž	118	10	9	4	7	7	18	6	6	-	51	26
ZD Kočevje	M	66	7	2	-	22	1	-	-	-	1	33	-
	Ž	62	3	4	1	6	3	11	-	4	-	30	3
ZD Ljubljana	M	632	61	44	27	127	45	4	-	-	50	274	-
	Ž	662	32	31	31	34	39	166	40	49	-	240	57
ZD Trbovlje	M	87	6	3	8	23	2	-	-	-	5	40	-
	Ž	75	2	1	5	1	5	19	6	7	-	29	1
ZD Vrhnika	M	86	10	1	2	21	5	-	-	-	8	39	-
	Ž	109	4	10	6	2	10	21	5	7	-	44	11

cont. ↓

Tabela 6. Nadaljevanje - continued

Zdravstvena regija Zdravstveni dom	Spol	Skupaj 140 - 209	L o k a c i j a (šifre MKB)*									Druge lokal. 234*	
			151	153	154	162	173	174	180	182	185		
Health region Subregion	Sex	All sites	Site (ICD No.)*									Other sites	
Maribor	M	610	54	28	40	145	70	-	-	-	43	230	-
	Ž	575	37	29	42	25	84	122	28	44	-	164	32
ZD Maribor	M	479	43	24	31	118	58	-	-	-	34	171	-
	Ž	437	21	23	31	23	59	99	21	31	-	129	25
ZD Ptuj	M	131	11	4	9	27	12	-	-	-	9	59	-
	Ž	138	16	6	11	2	25	23	7	13	-	35	7
Murska Sobota	M	276	25	20	16	57	30	-	-	-	32	96	-
	Ž	212	10	22	9	7	41	29	17	11	-	66	12
ZD Mur. Sobota	M	276	25	20	16	57	30	-	-	-	32	96	-
	Ž	212	10	22	9	7	41	29	17	11	-	66	12
Novo mesto	M	244	24	12	19	54	12	-	-	-	17	106	-
	Ž	216	12	15	11	11	16	53	11	14	-	73	10
ZD Novo mesto	M	244	24	12	19	54	12	-	-	-	17	106	-
	Ž	216	12	15	11	11	16	53	11	14	-	73	10
Ravne	M	197	16	11	13	45	16	-	-	-	13	83	-
	Ž	179	7	3	4	9	27	26	12	11	-	80	8
ZD Ravne	M	115	6	4	9	29	11	-	-	-	7	49	-
	Ž	105	4	3	2	6	14	15	7	7	-	47	3
ZD Velenje	M	82	10	7	4	16	5	-	-	-	6	34	-
	Ž	74	3	-	2	3	13	11	5	4	-	33	5

* Opis šifer MKB:
Description of the ICD numbers:

151 Želodec Stomach	162 Sapnik, sapnica, pljuča Trachea, bronchus, lung	180 Maternica, vrat Uterus, cervix
153 Debelo črevo Colon	173 Koža, drugi malignomi Skin, other malignancies	182 Maternica, telo, drugo Uterus, corpus, etc.
154 Rektum Rectum, anus	174 Dojka Breast	185 Prostata Prostate

** Neupoštevano v skupnem številu:
Not included in all sites:

234 Maternica, vrat, in situ
Uterus, cervix, in situ

Tabela 7. Število novih primerov raka, ugotovljenih v bolnišnicah, ter število in odstotek mikroskopsko potrjenih primerov, po lokaciji in spolu - Slovenija 1992

Table 7. Total number of new cancer cases diagnosed in hospitals and number and percentage of microscopically confirmed cases, by site and sex - Slovenia 1992

Šifra MKB*	L o k a c i j a	Spol	Število novih primerov	Mikroskopsko potrjeni primeri	
				Število	Odstotek**
ICD* No.	Site	Sex	Number of new cases	Microscopically confirmed cases Number	Per cent**
140	Vse lokacije	Skupaj	6 624	6 140	93
-	All sites	Total			
209		Moški	3 397	3 131	92
		Male			
		Ženske	3 227	3 009	93
		Female			
140	Ustnica	M	29	28	97
	Lip	Ž	10	9	
141	Jezik	M	43	42	98
	Tongue	Ž	5	5	
142	Slinavke	M	8	8	
	Salivary glands	Ž	7	7	
143	Dlesni	M	6	6	
	Gum	Ž	2	2	
144	Ustno dno	M	38	38	100
	Floor of mouth	Ž	4	4	
145	Usta, drugo	M	26	26	100
	mouth, other parts	Ž	5	5	
146	Orofarinks	M	93	92	99
	Oropharynx	Ž	7	7	
147	Epifarinks	M	8	8	
	Epipharynx	Ž	3	3	
148	Hipofarinks	M	45	45	100
	Hypopharynx	Ž	4	4	
149	Žrelo, neoznačeno	M	-	-	
	Pharynx, not specified	Ž	-	-	
150	Požiralnik	M	81	75	93
	Esophagus	Ž	13	11	
151	Želodec	M	283	256	90
	Stomach	Ž	165	152	92
152	Tanko črevo	M	5	5	
	Small intestine	Ž	4	3	

cont. ↓

Tabela 7. Nadaljevanje - continued

Šifra MKB*	L o k a c i j a	Spol	Število novih primerov	Mikroskopsko potrjeni primeri	
				Število	Odstotek**
ICD* No.	Site	Sex	Number of new cases	Microscopically confirmed cases Number	Per cent**
153	Debelo črevo Colon	M	193	179	93
		Ž	192	171	89
154	Rektum Rectum, anus	M	204	183	90
		Ž	166	151	91
155	Jetra Liver	M	42	38	90
		Ž	19	18	95
156	Žolčnik, žolčni vodi Gall bladder, bile ducts	M	36	28	78
		Ž	64	52	81
157	Trebušna slinavka Pancreas	M	104	72	69
		Ž	94	61	65
158	Retro-, peritonej Retro-, peritoneum	M	11	11	
		Ž	8	7	
159	Prebavila, drugo Digestive organs, other	M	-	-	
		Ž	2	2	
160	Nos, obnosne votline, drugo Nose, sinuses, etc.	M	8	8	
		Ž	10	10	
161	Grlo Larynx	M	105	105	100
		Ž	10	10	
162	Sapnik, sapnica, pljuča Trachea, bronchus, lung	M	755	712	94
		Ž	151	141	93
163	Plevra, mediastin., drugo Pleura, mediastinum, etc.	M	12	11	
		Ž	3	2	
170	Kosti Bone	M	2	2	
		Ž	11	11	
171	Mehka tkiva Soft tissues	M	13	13	
		Ž	16	16	100
172	Koža, maligni melanom Skin, malignant melanoma	M	63	63	100
		Ž	79	78	99
173	Koža, drugi malignomi Skin, other malignancies	M	277	270	97
		Ž	332	327	99
174	Dojka Breast	M	7	7	
		Ž	709	688	97
180	Maternica, vrat Uterus, cervix	Ž	176	174	99
181	Horioepiteliom Chorioepithelioma	Ž	1	1	

cont. ↓

Tabela 7. Nadaljevanje - continued

Šifra MKB*	L o k a c i j a	Spol	Število novih primerov	Mikroskopsko potrjeni primeri	
				Število	Odstotek**
ICD* No.	Site	Sex	Number of new cases	Microscopically confirmed cases Number	Per cent**
182	Maternica, telo, drugo Uterus, corpus, etc.	Ž	225	225	100
183	Jajčnik, jajcevod, drugo Ovary, Fallopian tube, etc.	Ž	170	164	96
184	Nožnica, vulva, drugo Vagina, vulva, etc.	Ž	39	37	95
185	Prostata Prostate	M	241	221	92
186	Modo Testis	M	53	53	100
187	Penis, obmodek, drugo Penis, epididymis, etc.	M	8	8	
188	Mehur Bladder	M	135	125	93
		Ž	32	27	84
189	Ledvica, sečevod, drugo Kidney, ureter, etc.	M	68	62	91
		Ž	61	57	93
190	Okno Eye	M	10	7	
		Ž	10	8	
191	Možgani Brain	M	40	31	78
		Ž	42	37	88
192	Živčevje, drugo Nervous system, other	M	3	3	
		Ž	3	3	
193	Ščitnica Thyroid	M	16	16	100
		Ž	44	43	98
194	Endokrine žleze, druge Endocrine glands, other	M	3	2	
		Ž	3	2	
195	Slabo opredeljena lokaliz. Ill-defined site	M	4	3	
		Ž	22	15	68
196	Metastaze v bezgavkah Lymph node metastases	M	12	12	
		Ž	14	14	
197	Met. v dihalih, prebavilih Respiratory, digestive tract met.	M	54	32	59
		Ž	47	26	55
198	Metastaze, druge Metastases, other	M	25	15	60
		Ž	15	9	60
199	Malignomi, neopred. Malignancies, unspecified	M	60	42	70
		Ž	38	25	66

cont. ↓

Tabela 7. Nadaljevanje - continued

Šifra MKB*	L o k a c i j a	Spol	Število novih primerov	Mikroskopsko potrjeni primeri	
				Število	Odstotek**
ICD* No.	Site	Sex	Number of new cases	Microscopically confirmed cases Number	Per cent**
200	Ne-Hodgkinovi limfomi	M	49	49	100
202	Non-Hodgkin's lymphomas	Ž	54	53	98
201	Hodgkinov limfom	M	19	19	100
	Hodgkin's disease	Ž	12	12	
203	Plazmacitom	M	22	22	100
	Plasmacytoma	Ž	33	29	88
204.0	Levkemija, limfatična, akut.	M	16	16	100
	Leukaemia, lymphatic, acute	Ž	17	17	100
204.1	Levkemija, limfatična, kron.	M	30	30	100
	Leukaemia, lymphatic, chronic	Ž	32	32	100
205	Levkemija, mieloična	M	23	23	100
	Leukaemia, myeloid	Ž	22	22	100
206	Levkemija, monocitna	M	3	3	
	Leukaemia, monocytic	Ž	2	2	
207	Levkemije, druge	M	1	1	
	Leukaemias, other	Ž	5	5	
208	Policitemija, prava	M	1	1	
	Polycythemia vera	Ž	8	8	
209	Mielofibroza	M	4	4	
	Myelofibrosis	Ž	5	5	
Zgoraj neupoštevani					
Not included above					
-	Dojka, in situ	Ž	12	12	
	Breast, in situ				
2340	Maternica, vrat, in situ	Ž	226	226	100
	Uterus, cervix, in situ				
2250	Možgani, benigni tumor	M	9	9	
	Brain, benign tumor	Ž	18	17	94
2381	Možgani, neopredeljeno	M	7	1	
	Brain, unspecified	Ž	4	1	

* International classification of diseases, eighth revision, 1965

** Odstotki niso računani pri številih pod 15
Percentages are not calculated for less than 15 cases

Tabela 8. Število histološko (in citološko) potrjenih novih primerov raka - po histološki vrsti in lokaciji - Slovenija 1992

Table 8. Number of histologicaly (and cytologically) confirmed new cancer cases by histologic type and site - Slovenia 1992

<i>Histološka vrsta</i> <i>Histologic type</i>	<i>Skupaj</i> <i>All sites</i>	<i>Lokacija (šifra MKB) - Site (ICD No.)</i>												
		140 - 209	140	141	142	143	144	145	146	147	148			
Vse vrste - hist.(cit.)	5483(657)	35 (2)	46 (1)	14 (1)	8	-	42	-	31	-	94 (5)	11	-	48 (1)
All types - hist.(cyt.)														
Carcinoma non specified	363 (215)	1 (1)	-	3	-	1	-	1	-	-	3 (1)	1	-	1
Small cell carcinoma	119 (46)	-	1	-	-	-	-	-	-	-	-	-	-	-
Papillary carcinoma	7	1	1	-	-	1	-	-	-	-	-	-	-	-
Squamous carcinoma	1035 (113)	32 (1)	44 (1)	-	-	6	-	41	-	30	84 (3)	6	-	47 (1)
Basal cell carcinoma	432 (19)	-	-	-	-	-	-	-	-	-	-	-	-	-
Transitional cel carcinoma	161 (2)	-	-	-	-	-	-	-	-	-	-	-	-	-
Adenocarcinoma	2591 (172)	-	-	5 (1)	-	-	-	-	-	1	-	1	-	-
Mucoepidermoid carcinoma	4	-	-	4	-	-	-	-	-	-	-	-	-	-
Fibrosarcoma	-	-	-	-	-	-	-	-	-	-	-	-	-	-
Fibrohistiocytic sarcoma	9	-	-	-	-	-	-	-	-	-	-	-	-	-
Liposarcoma	7	-	-	-	-	-	-	-	-	-	-	-	-	-
Leiomyosarcoma	21	-	-	-	-	-	-	-	-	-	-	-	-	-
Rhabdomyosarcoma	4 (2)	-	-	-	-	-	-	-	-	-	-	-	-	-
Endothelial vessels sarcoma	3	-	-	-	-	-	-	-	-	-	-	-	-	-
Perivascular sarcoma	1	-	-	-	-	-	-	-	-	-	-	-	-	-
Malignant mesothelioma	13	-	-	-	-	-	-	-	-	-	-	-	-	-
Neural sarcoma	7	-	-	-	-	-	-	-	-	-	-	-	-	-
Malignant paraganglioma	-	-	-	-	-	-	-	-	-	-	-	-	-	-
Malignant mesenchymoma	1	-	-	-	-	-	-	-	-	-	-	1	-	-
Miscellaneous sarcoma	7	-	-	-	-	-	-	-	-	-	-	-	-	-
Unclassified soft tissue sarcoma	9	-	-	-	-	-	-	-	-	-	-	-	-	-
Osteosarcoma	5	-	-	-	-	-	-	-	-	-	-	-	-	-
Chondrosarcoma	4	-	-	-	-	-	-	-	-	-	-	-	-	-
Complex mixed and stromal malignoma	19	-	-	1	-	-	-	-	-	-	-	-	-	-
Retinoblastoma	1	-	-	-	-	-	-	-	-	-	-	-	-	-
Cystosarcoma phylloides	2	-	-	-	-	-	-	-	-	-	-	-	-	-
Malignant melanoma	165 (1)	1	-	-	-	-	-	-	1	-	-	-	-	-
Specialized gonadal malignoma	1	-	-	-	-	-	-	-	-	-	-	-	-	-
Dysgerminoma and seminoma	26	-	-	-	-	-	-	-	-	-	-	-	-	-
Other germ cell malignoma	29	-	-	-	-	-	-	-	-	-	-	-	-	-
Trophoblastic malignoma	7	-	-	-	-	-	-	-	-	-	-	-	-	-
Brenner tumor	-	-	-	-	-	-	-	-	-	-	-	-	-	-
Malignant glioma	64	-	-	-	-	-	-	-	-	-	-	-	-	-
Malignant meningioma	3	-	-	-	-	-	-	-	-	-	-	-	-	-
Non Hodgkin lymphoma	131 (26)	-	-	1	-	-	-	-	-	6 (1)	-	2	-	-
Hodgkin lymphoma	24 (7)	-	-	-	-	-	-	-	-	-	-	-	-	-
Plasma cell tumors	33 (18)	-	-	-	-	-	-	-	-	-	-	-	-	-
Leukemia except chronic lymphoid	75 (13)	-	-	-	-	-	-	-	-	-	-	-	-	-
Chronic lymphoid leukemia	54 (8)	-	-	-	-	-	-	-	-	-	-	-	-	-
Other lymphoreticular neoplasms	-	-	-	-	-	-	-	-	-	-	-	-	-	-
Miscellaneous malignoma	15 (4)	-	-	-	-	-	-	-	-	-	-	-	-	-
Small cell malignoma	1	-	-	-	-	-	-	-	-	-	-	-	-	-
Malignoma non specified	30 (11)	-	-	-	-	-	-	-	-	-	-	-	-	-

Tabela 8. Nadaljevanje - continued

Histološka vrsta Histologic type	Skupaj	L o k a c i j a (šifra MKB) - Site (ICD No.)												
	140 - 209 All sites	150	151	152	153	154	155	156	157	158	159	cont. →		
Vse vrste - hist.(cit.)	5483(657)	84 (2)	399 (9)	8	-	349 (1)	334	-	48 (8)	77 (3)	105(28)	17 (1)	2	-
All types - hist.(cyl.)														
Carcinoma non specified	363 (215)	6 (1)	40 (2)	1	-	18	-	17	-	-	12 (1)	15 (9)	- (1)	-
Small cell carcinoma	119 (46)	-	-	-	-	-	-	1	-	-	1	- (1)	-	-
Papillary carcinoma	7	-	-	-	-	-	-	-	-	-	-	-	-	-
Squamous carcinoma	1035 (113)	64 (1)	2	-	-	-	-	7	-	-	1	-	-	-
Basal cell carcinoma	432 (19)	-	-	-	-	-	-	-	-	-	-	-	-	-
Transitional cel carcinoma	161 (2)	-	-	-	-	-	-	-	-	-	-	-	-	-
Adenocarcinoma	2591 (172)	13	319 (7)	6	-	325 (1)	304	-	46 (8)	62 (2)	85(18)	2	-	2
Mucoepidermoid carcinoma	4	-	-	-	-	-	-	-	-	-	-	-	-	-
Fibrosarcoma	-	-	-	-	-	-	-	-	-	-	-	-	-	-
Fibrohistiocytic sarcoma	9	-	-	-	-	-	-	-	-	-	-	1	-	-
Liposarcoma	7	-	-	-	-	1	-	-	-	-	-	1	-	-
Leiomyosarcoma	21	-	5	-	1	-	-	-	-	-	-	3	-	-
Rhabdomyosarcoma	4 (2)	-	-	-	-	-	-	-	-	-	-	1	-	-
Endothelial vessels sarcoma	3	-	-	-	-	-	-	-	-	-	-	-	-	-
Perivascular sarcoma	1	-	-	-	-	-	-	-	-	-	-	-	-	-
Malignant mesothelioma	13	-	-	-	-	-	-	-	-	-	-	3	-	-
Neural sarcoma	7	-	-	-	-	-	-	-	-	-	-	1	-	-
Malignant paraganglioma	-	-	-	-	-	-	-	-	-	-	-	-	-	-
Malignant mesenchymoma	1	-	-	-	-	-	-	-	-	-	-	-	-	-
Miscellaneous sarcoma	7	-	-	-	-	-	-	-	-	-	-	1	-	-
Unclassified soft tissue sarcoma	9	-	-	-	-	-	-	-	-	-	-	1	-	-
Osteosarcoma	5	-	-	-	-	-	-	-	-	-	-	-	-	-
Chondrosarcoma	4	-	-	-	-	-	-	-	-	-	-	-	-	-
Complex mixed and stromal malignoma	19	-	-	1	-	-	-	-	1	-	-	1	-	-
Retinoblastoma	1	-	-	-	-	-	-	-	-	-	-	-	-	-
Cystosarcoma phyllodes	2	-	-	-	-	-	-	-	-	-	-	-	-	-
Malignant melanoma	165 (1)	-	1	-	-	-	3	-	-	-	-	-	-	-
Specialized gonadal malignoma	1	-	-	-	-	-	-	-	-	-	-	-	-	-
Dysgerminoma and seminoma	26	-	-	-	-	-	-	-	-	-	-	2	-	-
Other germ cell malignoma	29	-	-	-	-	-	-	-	-	-	-	-	-	-
Trophoblastic malignoma	7	-	-	-	-	-	-	-	-	-	-	-	-	-
Brenner tumor	-	-	-	-	-	-	-	-	-	-	-	-	-	-
Malignant glioma	64	-	-	-	-	-	-	-	-	-	-	-	-	-
Malignant meningioma	3	-	-	-	-	-	-	-	-	-	-	-	-	-
Non Hodgkin lymphoma	131 (26)	-	28	-	-	1	-	-	-	-	-	-	-	-
Hodgkin lymphoma	24 (7)	-	-	-	-	-	-	-	-	-	-	-	-	-
Plasma cell tumors	33 (18)	-	-	-	-	-	-	-	-	-	-	-	-	-
Leukemia except chronic lymphoid	75 (13)	-	-	-	-	-	-	-	-	-	-	-	-	-
Chronic lymphoid leukemia	54 (8)	-	-	-	-	-	-	-	-	-	-	-	-	-
Other lymphoreticular neoplasms	-	-	-	-	-	-	-	-	-	-	-	-	-	-
Miscellaneous malignoma	15 (4)	-	-	-	-	-	-	-	-	-	-	-	-	-
Small cell malignoma	1	-	-	-	-	-	-	-	-	-	-	-	-	-
Malignoma non specified	30 (11)	1	3	-	-	4	-	2	-	1	1	5	-	-

Tabela 8. Nadaljevanje - continued

Histološka vrsta Histologic type	Skupaj All sites	L o k a c i j a (Šifra MKB) - Site (ICD No.)											
		140 - 209	160	161	162	163	170	171	172	173	174	cont. →	
Vse vrste - hist.(cit.)	5483(657)	18	-	113 (2)	596(257)	13	-	13	-	28 (1)	140 (1)	572(25)	589(106)
All types - hist.(cyt.)													
Carcinoma non specified	363 (215)	1	-	3	91 (72)	-	-	-	-	-	-	10 (2)	28 (92)
Small cell carcinoma	119 (46)	-	-	-	109 (44)	-	-	-	-	-	-	-	2
Papillary carcinoma	7	-	-	1	-	-	-	-	-	-	-	2	-
Squamous carcinoma	1035 (113)	10	-	109 (2)	243 (94)	-	-	-	-	-	-	119 (3)	1
Basal cell carcinoma	432 (19)	-	-	-	-	-	-	-	-	-	-	429 (19)	1
Transitional cel carcinoma	161 (2)	-	-	-	-	-	-	-	-	-	-	-	-
Adenocarcinoma	2591 (172)	4	-	-	151 (44)	-	-	-	-	-	-	3	550 (13)
Mucoepidermoid carcinoma	4	-	-	-	-	-	-	-	-	-	-	-	-
Fibrosarcoma	-	-	-	-	-	-	-	-	-	-	-	-	-
Fibrohistiocytic sarcoma	9	-	-	-	-	-	-	-	4	-	-	4	-
Liposarcoma	7	-	-	-	-	-	-	-	5	-	-	-	-
Leiomyosarcoma	21	-	-	-	-	-	-	1	4	-	-	-	-
Rhabdomyosarcoma	4 (2)	-	-	-	-	-	-	-	2 (1)	-	-	-	-
Endothelial vessels sarcoma	3	1	-	-	-	-	-	-	1	-	-	1	-
Perivascular sarcoma	1	-	-	-	-	-	-	-	-	-	-	-	1
Malignant mesothelioma	13	-	-	-	-	10	-	-	-	-	-	-	-
Neural sarcoma	7	-	-	-	-	-	-	-	-	-	-	-	-
Malignant paraganglioma	-	-	-	-	-	-	-	-	-	-	-	-	-
Malignant mesenchymoma	1	-	-	-	-	-	-	-	-	-	-	-	-
Miscellaneous sarcoma	7	-	-	-	-	-	-	2	4	-	-	-	-
Unclassified soft tissue sarcoma	9	-	-	-	-	-	-	-	6	-	-	-	-
Osteosarcoma	5	-	-	-	-	-	-	5	-	-	-	-	-
Chondrosarcoma	4	-	-	-	-	-	-	4	-	-	-	-	-
Complex mixed and stromal malignoma	19	-	-	-	-	-	-	-	-	-	-	-	1
Retinoblastoma	1	-	-	-	-	-	-	-	-	-	-	-	-
Cystosarcoma phyllodes	2	-	-	-	-	-	-	-	-	-	-	-	2
Malignant melanoma	165 (1)	1	-	-	-	-	-	-	-	140 (1)	-	-	2
Specialized gonadal malignoma	1	-	-	-	-	-	-	-	-	-	-	-	-
Dysgerminoma and seminoma	26	-	-	-	-	-	-	-	-	-	-	-	-
Other germ cell malignoma	29	-	-	-	-	-	-	-	-	-	-	-	-
Trophoblastic malignoma	7	-	-	-	-	1	-	-	-	-	-	-	-
Brenner tumor	-	-	-	-	-	-	-	-	-	-	-	-	-
Malignant glioma	64	-	-	-	-	-	-	-	-	-	-	-	-
Malignant meningioma	3	-	-	-	-	-	-	-	-	-	-	-	-
Non Hodgkin lymphoma	131 (26)	-	-	-	2 (1)	-	-	-	2	-	-	3 (1)	1
Hodgkin lymphoma	24 (7)	-	-	-	-	-	-	-	-	-	-	-	-
Plasma cell tumors	33 (18)	-	-	-	-	-	-	-	-	-	-	-	-
Leukemia except chronic lymphoid	75 (13)	-	-	-	-	-	-	-	-	-	-	-	-
Chronic lymphoid leukemia	54 (8)	-	-	-	-	-	-	-	-	-	-	-	-
Other lymphoreticular neoplasms	-	-	-	-	-	-	-	-	-	-	-	-	-
Miscellaneous malignoma	15 (4)	-	-	-	-	-	-	1	-	-	-	-	-
Small cell malignoma	1	1	-	-	-	-	-	-	-	-	-	-	-
Malignoma non specified	30 (11)	-	-	-	(2)	2	-	-	-	-	-	1	(1)

Tabela 8. Nadaljevanje - continued

<i>Histološka vrsta</i>	<i>Skupaj</i>	<i>L o k a c i j a (šifra MKB) - S i t e (ICD No.)</i>												
<i>Histologic type</i>	<i>All sites</i>	180	181	182	183	184	185	186	187	188	189			
Vse vrste - hist.(cit.)	5483(657)	173 (1)	1	-	224 (1)	158 (6)	37	-	204(17)	53	-	7 (1)	150 (2)	113 (6)
All types - hist.(cyt.)														
Carcinoma non specified	363 (215)	4 (1)	-	-	6 (1)	9	-	-	53 (5)	-	-	-	5	1
Small cell carcinoma	119 (46)	1	-	-	-	-	-	-	-	-	-	-	-	-
Papillary carcinoma	7	-	-	-	-	-	1	-	-	-	-	-	-	-
Squamous carcinoma	1035 (113)	141	-	-	-	-	28	-	-	-	7 (1)	3	1	-
Basal cell carcinoma	432 (19)	-	-	-	-	-	2	-	-	-	-	-	-	-
Transitional cel carcinoma	161 (2)	-	-	-	-	-	-	1	-	-	-	138 (2)	22	-
Adenocarcinoma	2591 (172)	26	-	-	204	143 (6)	4	-	149(12)	-	-	3	85 (6)	-
Mucoepidermoid carcinoma	4	-	-	-	-	-	-	-	-	-	-	-	-	-
Fibrosarcoma	-	-	-	-	-	-	-	-	-	-	-	-	-	-
Fibrohistiocytic sarcoma	9	-	-	-	-	-	-	-	-	-	-	-	-	-
Liposarcoma	7	-	-	-	-	-	-	-	-	-	-	-	-	-
Leiomyosarcoma	21	-	-	-	5	-	-	-	-	-	-	-	-	-
Rhabdomyosarcoma	4 (2)	-	-	-	-	-	-	-	-	-	-	-	-	-
Endothelial vessels sarcoma	3	-	-	-	-	-	-	-	-	-	-	-	-	-
Perivascular sarcoma	1	-	-	-	-	-	-	-	-	-	-	-	-	-
Malignant mesothelioma	13	-	-	-	-	-	-	-	-	-	-	-	-	-
Neural sarcoma	7	-	-	-	-	-	-	-	-	-	-	-	-	-
Malignant paraganglioma	-	-	-	-	-	-	-	-	-	-	-	-	-	-
Malignant mesenchymoma	1	-	-	-	-	-	-	-	-	-	-	-	-	-
Miscellaneous sarcoma	7	-	-	-	-	-	-	-	-	-	-	-	-	-
Unclassified soft tissue sarcoma	9	-	-	-	-	-	-	-	-	-	-	-	-	-
Osteosarcoma	5	-	-	-	-	-	-	-	-	-	-	-	-	-
Chondrosarcoma	4	-	-	-	-	-	-	-	-	-	-	-	-	-
Complex mixed and stromal malignoma	19	-	-	-	9	1	-	-	-	-	-	1	3	-
Retinoblastoma	1	-	-	-	-	-	-	-	-	-	-	-	-	-
Cystosarcoma phyllodes	2	-	-	-	-	-	-	-	-	-	-	-	-	-
Malignant melanoma	165 (1)	-	-	-	-	-	2	-	-	-	-	-	-	-
Specialized gonadal malignoma	1	-	-	-	-	1	-	-	-	-	-	-	-	-
Dysgerminoma and seminoma	26	-	-	-	-	1	-	-	22	-	-	-	-	-
Other germ cell malignoma	29	-	-	-	-	1	-	-	26	-	-	-	-	-
Trophoblastic malignoma	7	-	-	1	-	1	-	-	4	-	-	-	-	-
Brenner tumor	-	-	-	-	-	-	-	-	-	-	-	-	-	-
Malignant glioma	64	-	-	-	-	-	-	-	-	-	-	-	-	-
Malignant meningioma	3	-	-	-	-	-	-	-	-	-	-	-	-	-
Non Hodgkin lymphoma	131 (26)	1	-	-	-	1	-	-	1	-	-	-	-	-
Hodgkin lymphoma	24 (7)	-	-	-	-	-	-	-	-	-	-	-	-	-
Plasma cell tumors	33 (18)	-	-	-	-	-	-	-	-	-	-	-	-	-
Leukemia except chronic lymphoid	75 (13)	-	-	-	-	-	-	-	-	-	-	-	-	-
Chronic lymphoid leukemia	54 (8)	-	-	-	-	-	-	-	-	-	-	-	-	-
Other lymphoreticular neoplasms	-	-	-	-	-	-	-	-	-	-	-	-	-	-
Miscellaneous malignoma	15 (4)	-	-	-	-	-	-	-	-	-	-	-	-	-
Small cell malignoma	1	-	-	-	-	-	-	-	-	-	-	-	-	-
Malignoma non specified	30 (11)	-	-	-	-	-	-	1	-	-	-	-	1	-

Tabela 8. Nadaljevanje - continued

Histološka vrsta <i>Histologic type</i>	Skupaj <i>All sites</i>	Lokacija (šifra MKB) - Site (ICD No.)												
		140 - 209	190	191	192	193	194	195	196	197	198	199		
Vse vrste - hist.(cit.)	5483(657)	14 (1)	68	-	6	-	53 (6)	4	-	13 (5)	17 (9)	26(32)	16 (8)	32(35)
All types - hist.(cyl.)														
Carcinoma non specified	363 (215)	-	-	-	-	-	4 (3)	-	-	2 (1)	6 (3)	6 (7)	4 (1)	10(11)
Small cell carcinoma	119 (46)	-	-	-	-	-	-	-	-	-	-	1	1	2 (1)
Papillary carcinoma	7	-	-	-	-	-	-	-	-	-	-	-	-	-
Squamous carcinoma	1035 (113)	2	-	-	-	-	-	-	-	-	6 (4)	1 (1)	-	- (1)
Basal cell carcinoma	432 (19)	-	-	-	-	-	-	-	-	-	-	-	-	-
Transitional cel carcinoma	161 (2)	-	-	-	-	-	-	-	-	-	-	-	-	-
Adenocarcinoma	2591 (172)	-	-	-	-	-	48 (2)	2	-	5 (2)	3 (2)	16(22)	7 (6)	17(20)
Mucoepidermoid carcinoma	4	-	-	-	-	-	-	-	-	-	-	-	-	-
Fibrosarcoma	-	-	-	-	-	-	-	-	-	-	-	-	-	-
Fibrohistiocytic sarcoma	9	-	-	-	-	-	-	-	-	-	-	-	-	-
Liposarcoma	7	-	-	-	-	-	-	-	-	-	-	-	-	-
Leiomyosarcoma	21	-	-	-	-	-	-	-	-	1	-	-	-	1
Rhabdomyosarcoma	4 (2)	- (1)	-	-	-	-	-	-	-	1	-	-	-	-
Endothelial vessels sarcoma	3	-	-	-	-	-	-	-	-	-	-	-	-	-
Perivascular sarcoma	1	-	-	-	-	-	-	-	-	-	-	-	-	-
Malignant mesothelioma	13	-	-	-	-	-	-	-	-	-	-	-	-	-
Neural sarcoma	7	-	-	-	-	5	-	-	1	-	-	-	-	-
Malignant paraganglioma	-	-	-	-	-	-	-	-	-	-	-	-	-	-
Malignant mesenchymoma	1	-	-	-	-	-	-	-	-	-	-	-	-	-
Miscellaneous sarcoma	7	-	-	-	-	-	-	-	-	-	-	-	-	-
Unclassified soft tissue sarcoma	9	-	-	-	-	-	-	1	-	1	-	-	-	-
Osteosarcoma	5	-	-	-	-	-	-	-	-	-	-	-	-	-
Chondrosarcoma	4	-	-	-	-	-	-	-	-	-	-	-	-	-
Complex mixed and stromal malignoma	19	-	-	-	-	-	-	-	-	-	-	-	-	-
Retinoblastoma	1	-	1	-	-	-	-	-	-	-	-	-	-	-
Cystosarcoma phyllodes	2	-	-	-	-	-	-	-	-	-	-	-	-	-
Malignant melanoma	165 (1)	11	-	-	-	-	-	-	-	-	1	-	2	-
Specialized gonadal malignoma	1	-	-	-	-	-	-	-	-	-	-	-	-	-
Dysgerminoma and seminoma	26	-	-	1	-	-	-	-	-	-	-	-	-	-
Other germ cell malignoma	29	-	-	-	-	-	-	-	-	2	-	-	-	-
Trophoblastic malignoma	7	-	-	-	-	-	-	-	-	-	-	-	-	-
Brenner tumor	-	-	-	-	-	-	-	-	-	-	-	-	-	-
Malignant glioma	64	-	-	64	-	-	-	-	-	-	-	-	-	-
Malignant meningioma	3	-	-	2	-	1	-	-	-	-	-	-	-	-
Non Hodgkin lymphoma	131 (26)	-	-	1	-	-	1 (1)	-	-	-	-	-	-	-
Hodgkin lymphoma	24 (7)	-	-	-	-	-	-	-	-	-	-	-	-	-
Plasma cell tumors	33 (18)	-	-	-	-	-	-	-	-	-	-	-	-	-
Leukemia except chronic lymphoid	75 (13)	-	-	-	-	-	-	-	-	-	-	-	-	-
Chronic lymphoid leukemia	54 (8)	-	-	-	-	-	-	-	-	-	-	-	-	-
Other lymphoreticular neoplasms	-	-	-	-	-	-	-	-	-	-	-	-	-	-
Miscellaneous malignoma	15 (4)	-	-	-	-	-	-	-	-	-	-	-	-	-
Small cell malignoma	1	-	-	-	-	-	-	-	-	-	-	-	-	-
Malignoma non specified	30 (11)	-	-	-	-	-	-	-	-	1 (2)	1	2 (2)	2 (1)	2 (2)

Tabela 8. Nadaljevanje - continued

<i>Histološka vrsta</i> <i>Histologic type</i>	<i>Skupaj</i>	<i>L o k a c i j a (šifra MKB) - Site (ICDNo.)</i>								
	140 - 209 <i>All sites</i>	200 202	201	203	204	205	206	207	208	209
Vse vrste - hist.(cit.) All types - hist.(cyt.)	5483(657)	80(22)	24 (7)	33(18)	86 (9)	35(10)	4 (1)	4 (2)	7 (2)	7 (2)
Carcinoma non specified	363 (215)	-	-	-	-	-	-	-	-	-
Small cell carcinoma	119 (46)	-	-	-	-	-	-	-	-	-
Papillary carcinoma	7	-	-	-	-	-	-	-	-	-
Squamous carcinoma	1035 (113)	-	-	-	-	-	-	-	-	-
Basal cell carcinoma	432 (19)	-	-	-	-	-	-	-	-	-
Transitional cel carcinoma	161 (2)	-	-	-	-	-	-	-	-	-
Adenocarcinoma	2591 (172)	-	-	-	-	-	-	-	-	-
Mucoepidermoid carcinoma	4	-	-	-	-	-	-	-	-	-
Fibrosarcoma	-	-	-	-	-	-	-	-	-	-
Fibrohistiocytic sarcoma	9	-	-	-	-	-	-	-	-	-
Liposarcoma	7	-	-	-	-	-	-	-	-	-
Leiomyosarcoma	21	-	-	-	-	-	-	-	-	-
Rhabdomyosarcoma	4 (2)	-	-	-	-	-	-	-	-	-
Endothelial vessels sarcoma	3	-	-	-	-	-	-	-	-	-
Perivascular sarcoma	1	-	-	-	-	-	-	-	-	-
Malignant mesothelioma	13	-	-	-	-	-	-	-	-	-
Neural sarcoma	7	-	-	-	-	-	-	-	-	-
Malignant paraganglioma	-	-	-	-	-	-	-	-	-	-
Malignant mesenchymoma	1	-	-	-	-	-	-	-	-	-
Miscellaneous sarcoma	7	-	-	-	-	-	-	-	-	-
Unclassified soft tissue sarcoma	9	-	-	-	-	-	-	-	-	-
Osteosarcoma	5	-	-	-	-	-	-	-	-	-
Chondrosarcoma	4	-	-	-	-	-	-	-	-	-
Complex mixed and stromal malignoma	19	-	-	-	-	-	-	-	-	-
Retinoblastoma	1	-	-	-	-	-	-	-	-	-
Cystosarcoma phyllodes	2	-	-	-	-	-	-	-	-	-
Malignant melanoma	165 (1)	-	-	-	-	-	-	-	-	-
Specialized gonadal malignoma	1	-	-	-	-	-	-	-	-	-
Dysgerminoma and seminoma	26	-	-	-	-	-	-	-	-	-
Other germ cell malignoma	29	-	-	-	-	-	-	-	-	-
Trophoblastic malignoma	7	-	-	-	-	-	-	-	-	-
Brenner tumor	-	-	-	-	-	-	-	-	-	-
Malignant glioma	64	-	-	-	-	-	-	-	-	-
Malignant meningioma	3	-	-	-	-	-	-	-	-	-
Non Hodgkin lymphoma	131 (26)	80 (22)	-	-	-	-	-	-	-	-
Hodgkin lymphoma	24 (7)	-	24 (7)	-	-	-	-	-	-	-
Plasma cell tumors	33 (18)	-	-	33 (18)	-	-	-	-	-	-
Leukemia except chronic lymphoid	75 (14)	-	-	-	32 (1)	35 (10)	4 (2)	4 (1)	-	-
Chronic lymphoid leukemia	54 (8)	-	-	-	54 (8)	-	-	-	-	-
Other lymphoreticular neoplasms	-	-	-	-	-	-	-	-	-	-
Miscellaneous malignoma	15 (4)	-	-	-	-	-	-	-	7 (2)	7 (2)
Small cell malignoma	1	-	-	-	-	-	-	-	-	-
Malignoma non specified	30 (10)	-	-	-	-	-	-	-	-	-

Tabela 9. Število primerov ne-Hodgkinovih limfomov* po lokaciji, spolu in starosti - Slovenija 1992

Table 9. Total number of non-Hodgkin's malignant lymphomas* by site, sex, and age - Slovenia 1992

Šifra MKB	Lokacija	Spol	Vse starosti	Starost																	
				0-	5-	10-	15-	20-	25-	30-	35-	40-	45-	50-	55-	60-	65-	70-	75-	80+	?
ICD No.	Site	Sex	All ages	Age																	
	Vse lokacije All sites	Skupaj Total	157	-	3	1	5	3	2	3	7	6	5	12	16	21	23	15	20	15	-
		Moški Male	76	-	3	-	3	2	2	-	5	3	1	8	11	8	6	9	7	8	-
		Ženske Female	81	-	-	1	2	1	-	3	2	3	4	4	5	13	17	6	13	7	-
**	Glava in vrat Head and neck	M	7	-	-	-	-	-	-	-	-	-	-	1	3	-	2	-	-	1	-
		Ž	3	-	-	-	-	-	-	-	-	-	-	-	-	-	1	-	1	1	-
151	Želodec Stomach	M	13	-	-	-	1	-	-	-	1	-	2	3	1	-	3	-	2	-	-
		Ž	15	-	-	-	-	-	-	-	-	-	-	-	3	7	2	3	-	-	-
153	Debelo črevo Colon	M	1	-	-	-	-	-	-	-	-	-	-	-	-	-	1	-	-	-	-
		Ž	-	-	-	-	-	-	-	-	-	-	-	-	-	-	-	-	-	-	-
162	Sapnik, sapnica, pljuča Trachea, bronchus, lung	M	1	-	-	-	-	-	-	-	-	-	1	-	-	-	-	-	-	-	-
		Ž	2	-	-	-	-	-	1	-	1	-	-	-	-	-	-	-	-	-	-
171	Mehka tkiva Soft tissue	M	1	-	-	-	-	-	-	-	-	-	1	-	-	-	-	-	-	-	-
		Ž	1	-	-	-	-	-	-	-	-	-	-	1	-	-	-	-	-	-	-
173	Koža, drugi malignomi Skin, other malignancies	M	2	-	-	-	-	-	-	1	-	-	-	-	-	-	-	-	1	-	-
		Ž	2	-	-	-	-	-	-	-	-	-	-	-	-	-	1	-	1	-	-
174	Dojka Breast	M	-	-	-	-	-	-	-	-	-	-	-	-	-	-	-	-	-	-	-
		Ž	1	-	-	-	-	-	-	-	-	-	-	-	-	1	-	-	-	-	-
180	Maternica, vrat Uterus, cervix	Ž	1	-	-	-	-	-	-	-	-	-	1	-	-	-	-	-	-	-	-
183	Jajčnik, jajcevod, drugo Ovary, Fallopian tube, etc.	Ž	1	-	-	1	-	-	-	-	-	-	-	-	-	-	-	-	-	-	-
186	Modo Testis	M	1	-	-	-	-	-	-	-	-	-	-	-	-	-	-	-	-	1	-
191	Možgani Brain	M	1	-	-	-	-	-	-	1	-	-	-	-	-	-	-	-	-	-	-
		Ž	-	-	-	-	-	-	-	-	-	-	-	-	-	-	-	-	-	-	-
193	Ščitnica Thyroid	M	-	-	-	-	-	-	-	-	-	-	-	-	-	-	-	-	-	-	-
		Ž	2	-	-	-	-	-	-	-	-	-	-	-	-	-	-	1	-	1	-
202	Bezgavke Lymph nodes	M	49	-	3	-	3	1	2	-	3	2	-	4	5	7	3	6	6	4	-
		Ž	53	-	-	1	1	1	-	2	2	2	3	4	4	9	8	3	8	5	-

* Vključeni so vsi citološko in/ali histološko potrjeni primeri
All cases included have been cytologically or histologically verified

** Šifre MKB/ICD Nos.: 142, 146, 147

Tabela 10. Število novih primerov raka po bolnišnicah ugotovitve diagnoze ter število in odstotek primerov, napoteni na Onkološki inštitut (OI) - Slovenija 1992

Table 10. Number of new cancer cases diagnosed by reporting hospitals, and number and percentage of cases referred to the Institute of Oncology (IO), Ljubljana - Slovenia 1992

<i>Bolnišnice</i>	<i>Število novih primerov</i>	<i>Napoteni na OI</i>	
<i>Hospitals</i>	<i>Number of new cases</i>	<i>Referred to the IO Number</i>	<i>Odstotek* Per cent*</i>
Skupaj Total	6 624	3 432	52
Onkološki inštitut, Ljubljana Institute of Oncology, Ljubljana	668	668	100
Klinične bolnišnice, Ljubljana University hospitals, Ljubljana	2 276	1 247	55
Dermatološka klinika	81	7	9
Gastroenterološka interna klinika	206	95	46
Ginekološka klinika	169	118	70
Infekcijska klinika	21	12	57
Inštitut za gerontologijo	13	5	
Inštitut za pljučne bolezni in tbc, Golnik	474	246	52
Interna klinika	191	73	38
Kirurška gastroenterološka klinika	336	173	51
Klinična bolnišnica za pediatrijo	39	33	85
Klinična bolnišnica za psihiatrijo	-	-	
Klinika za maksilofacialno kirurgijo	52	38	73
Klinika za nevrokirurgijo	42	30	71
Klinika za plastično kirurgijo in opeklino	46	36	78
Klinika za torakalno kirurgijo	73	32	44
Nevrološka klinika	48	27	56
Očesna klinika	20	17	85
Ortopedska klinika	11	10	
Otorinolaringološka klinika	226	211	93
Travmatološka klinika	3	2	
Urološka klinika	225	82	36
Splošne in specialne bolnišnice General and special hospitals	3 627	1 486	41
Splošna bolnišnica Brežice	63	31	49
Splošna bolnišnica Celje**	567	279	48

cont. ↓

Tabela 10. Nadaljevanje - continued

<i>Bolnišnice</i>	<i>Število novih primerov</i>	<i>Napoteni na OI</i>	
<i>Hospitals</i>	<i>Number of new cases</i>	<i>Število</i>	<i>Odstotek*</i>
		<i>Referred to the IO</i>	<i>Number</i>
			<i>Per cent*</i>
Splošna bolnišnica Jesenice	145	52	36
Splošna bolnišnica Koper	192	92	48
Splošna bolnišnica Maribor	1151	408	35
Splošna bolnišnica Murska Sobota	345	116	34
Splošna bolnišnica Nova Gorica	303	112	37
Splošna bolnišnica Novo mesto	373	176	47
Splošna bolnišnica Ptuj	74	39	53
Splošna bolnišnica Slovenj Gradec	220	76	35
Splošna bolnišnica Trbovlje	52	27	52
Bolnišnica za ginekologijo in porodništvo Kranj	33	24	73
Bolnišnica za ženske bolezni in porodništvo Postojna	30	21	70
Bolnica Ivana Regenta Sežana	58	26	45
Ortopedska bolnica Valdoltra	5	5	
Psihiatrična bolnišnica Begunje	1	-	
Psihiatrična bolnišnica Idrija	-	-	
Diagnostični center Bled	6	2	
Drugi zdravstveni zavodi	53	31	58
Other health institutions			

* Odstotki niso računani pri številih pod 15
Percentages are not calculated for less than 15 cases

** Vključno bolnišnica Topolšica
Including hospital Topolšica

Tabela 11. Število in odstotek novih primerov raka, ugotovljenih v bolnišnicah, po stadiju, lokaciji in spolu - Slovenija 1992

Table 11. Number and percentage of new cancer cases reported by hospitals by stage, site and sex - Slovenia 1992

Šifra MKB	Lokacija	Spol	Število primerov	Lokaliziran		S t a d i j					
				Število	Odstotek*	Regionarna razširitev		Oddaljena razširitev		Neznan	
ICD No.	Site	Sex	Number of cases	Localized Number	Per cent*	Regional Number	Per cent*	Remote Number	Per cent*	Unknown Number	Per cent*
140 209	Vse lokacije All sites	Skupaj Total	6624	2542	38	1945	29	1765	27	372	6
		Moški Male	3397	1200	35	1042	31	939	28	216	6
		Ženske Female	3227	1342	42	903	28	826	26	156	5
140	Ustnica	M	29	27	93	2	7	-	-	-	-
	Lip	Ž	10	10		-		-		-	
141	Jezik	M	43	9	21	27	63	7	16	-	-
	Tongue	Ž	5	2		2		1		-	
142	Slinavke	M	8	4		4		-		-	
	Salivary glands	Ž	7	4		3		-		-	
143	Dlesni	M	6	1		5		-		-	
	Gum	Ž	2	-		1		1		-	
144	Ustno dno	M	38	3	8	28	74	6	16	1	3
	Floor of mouth	Ž	4	4		-		-		-	
145	Usta, drugo	M	26	6	23	17	65	2	8	1	4
	Mouth, other parts	Ž	5	4		1		-		-	
146	Orofarinks	M	93	13	14	63	68	15	16	2	2
	Oropharynx	Ž	7	2		5		-		-	
147	Epifarinks	M	8	1		5		2		-	
	Epipharynx	Ž	3	1		2		-		-	
148	Hipofarinks	M	45	1	2	39	87	4	9	1	2
	Hypopharynx	Ž	4	-		2		2		-	
149	Žrelo, neoznačeno	M	-	-		-		-		-	
	Pharynx, not specified	Ž	-	-		-		-		-	
150	Požiralnik	M	81	23	28	37	46	14	17	7	9
	Esophagus	Ž	13	4		7		2		-	
151	Želodec	M	283	67	24	105	37	83	29	28	10
	Stomach	Ž	165	41	25	53	32	47	28	24	15
152	Tanko črevo	M	5	-		2		2		1	
	Small intestine	Ž	4	1		1		1		1	

cont. ↓

Tabela 11. Nadaljevanje - continued

Šifra MKB	L o k a c i j a	Spol	Število primerov	Lokaliziran		S t a d i j				Neznan	
				Število	Odstotek*	Regionarna razširitev	Odstotek*	Oddaljena razširitev	Odstotek*	Število	Odstotek*
ICD No.	S i t e	Sex	Number of cases	Localized		Regional		Remote		Unknown	
				Number	Per cent*	Number	Per cent*	Number	Per cent*	Number	Per cent*
153	Debelo črevo Colon	M	193	26	13	101	52	52	27	14	7
		Ž	192	31	16	94	49	50	26	17	9
154	Rektum Rectum, anus	M	204	45	22	83	41	61	30	15	7
		Ž	166	35	21	77	46	33	20	21	13
155	Jetra Liver	M	42	23	55	7	17	9	21	3	7
		Ž	19	10	53	6	32	3	16	-	-
156	Žolčnik, žolčni vodi Gall bladder, bile ducts	M	36	6	17	10	28	17	47	3	8
		Ž	64	15	23	17	27	26	41	6	9
157	Trebušna slinavka Pancreas	M	104	17	16	28	27	42	40	17	16
		Ž	94	8	9	31	33	42	45	13	14
158	Retro-, peritonej Retro-, peritoneum	M	11	3	-	6	-	2	-	-	-
		Ž	8	1	-	3	-	3	-	1	-
159	Prebavila, drugo Digestive organs, other	M	-	-	-	-	-	-	-	-	-
		Ž	2	-	-	-	-	2	-	-	-
160	Nos, obnosne votl., drugo Nose, sinuses, etc.	M	8	-	-	5	-	2	-	1	-
		Ž	10	3	-	6	-	1	-	-	-
161	Grlo Larynx	M	105	52	50	49	47	4	4	-	-
		Ž	10	7	-	2	-	1	-	-	-
162	Sapnik, sapnica, pljuča Trachea, bronchus, lung	M	755	213	28	272	36	247	33	23	3
		Ž	151	40	26	49	32	54	36	8	5
163	Plevra, mediastin., drugo Pleura, mediastinum, etc.	M	12	8	-	-	-	2	-	2	-
		Ž	3	-	-	1	-	1	-	1	-
170	Kosti Bone	M	2	-	-	2	-	-	-	-	-
		Ž	11	3	-	7	-	1	-	-	-
171	Mehka tkiva Soft tissues	M	13	8	-	4	-	-	-	1	-
		Ž	16	12	75	4	25	-	-	-	-
172	Koža, maligni melanom Skin, malignant melanoma	M	63	47	75	13	21	2	3	1	2
		Ž	79	62	78	11	14	3	4	3	4
173	Koža, drugi malignomi Skin, other malignancies	M	277	266	96	7	3	2	1	2	1
		Ž	332	324	98	7	2	1	-	-	-
174	Dojka Breast	M	7	3	-	2	-	2	-	-	-
		Ž	709	281	40	340	48	75	11	13	2
180	Maternica, vrat Uterus, cervix	Ž	176	82	47	58	33	35	20	1	1
181	Horioepiteliom Chorioepithelioma	Ž	1	1	-	-	-	-	-	-	-

cont. ↓

Tabela 11. Nadaljevanje - continued

Šifra MKB	Lokacija	Spol	Število primerov	Lokaliziran		S t a d i j				Neznan	
				Število	Odstotek*	Regionarna razširitev		Oddaljena razširitev		Število	Odstotek*
ICD No.	Site	Sex	Number of cases	Localized		S t a g e				Unknown	
				Number	Per cent*	Regional		Remote		Number	Per cent*
182	Maternica, telo, drugo Uterus, corpus, etc.	Ž	225	165	73	24	11	34	15	2	1
183	Jajčnik, jajcevod, drugo Ovary, Fallopian tube, etc.	Ž	170	34	20	18	11	113	66	5	3
184	Nožnica, vulva, drugo Vagina, vulva, etc.	Ž	39	21	54	12	31	5	13	1	3
185	Prostata Prostate	M	241	111	46	26	11	56	23	48	20
186	Modo Testis	M	53	25	47	19	36	9	17	-	-
187	Penis, obmodek, drugo Penis, epididymis, etc.	M	8	3		-		2		3	
188	Mehur Bladder	M	135	76	56	39	29	6	4	14	10
		Ž	32	11	34	15	47	1	3	5	16
189	Ledvica, sečevod, drugo Kidney, ureter, etc.	M	68	41	60	11	16	11	16	5	7
		Ž	61	39	64	4	7	14	23	4	7
190	Oko Eye	M	10	9		1		-		-	
		Ž	10	8		1		-		1	
191	Možgani Brain	M	40	40	100	-	-	-	-	-	-
		Ž	42	41	98	1	2	-	-	-	-
192	Živčevje, drugo Nervous system, other	M	3	1		1		1		-	
		Ž	3	2		-		1		-	
193	Ščitnica Thyroid	M	16	7	44	7	44	1	6	1	6
		Ž	44	21	48	15	34	7	16	1	2
194	Endokrine žleze, druge Endocrine glands, other	M	3	2		-		-		1	
		Ž	3	-		1		1		1	
195	Slabo opredeljena lokaliz. Ill-defined site	M	4	-		3		1		-	
		Ž	22	1	5	6	27	10	45	5	23
196	Metastaze v bezgavkah Lymph node metastases	M	12	-		-		-		12	
		Ž	14	-		-		-		14	
197	Met. v dihalih, prebavilih Respiratory, digestive tract met.	M	54	-		-		54	100	-	
		Ž	47	-		-		47	100	-	
198	Metastaze, drugje Metastases, other	M	25	-		-		25	100	-	
		Ž	15	-		-		15	100	-	
199	Malignomi, neopredeljeni Malignancies, unspecified	M	60	-		-		59	98	1	2
		Ž	38	-		-		38	100	-	

cont. ↓

Tabela 11. Nadaljevanje - continued

Šifra MKB	L o k a c i j a	Spol	Število primerov	S t a d i j (A n n - A r b o r)							
				I		II		III + IV		Neznani	
ICD No.	Site	Sex	Number of cases	Število	Odstotek*	Število	Odstotek*	Število	Odstotek*	Število	Odstotek*
				Number	Per cent*	Number	Per cent*	Number	Per cent*	Number	Per cent*
200	Ne-Hodgkinovi limfomi	M	49	11	22	5	10	26	53	7	14
+202	Non-Hodgkin's limfomas	Ž	54	10	19	11	20	25	46	8	15
201	Hodgkinov limfom	M	19	2	11	7	37	9	47	1	5
	Hodgkin's disease	Ž	12	1		5		6		-	

* Odstotki niso računani pri številih pod 15

* Percentages are not calculated for less than 15 cases

