

L. M. ŠKERJANC  
OUVERTURE LYRIQUE  
(1.različica: Mlada Breda)

partitura

rokopis



orig. man.

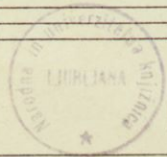
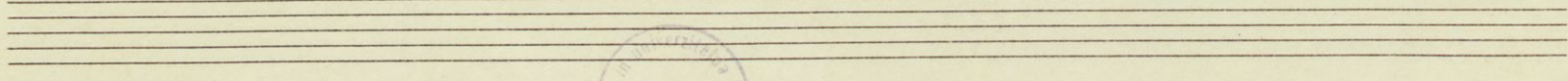
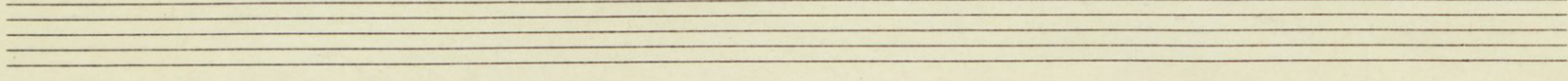
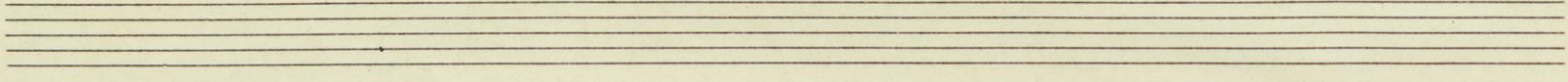
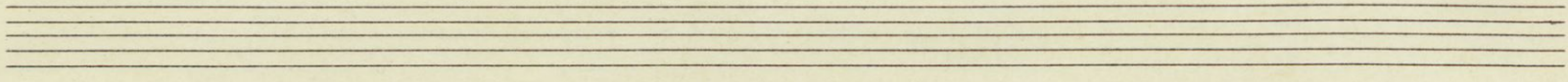
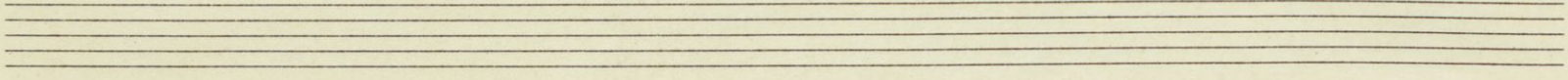
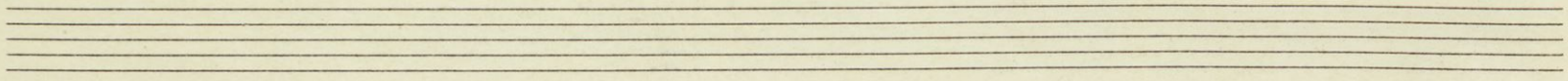
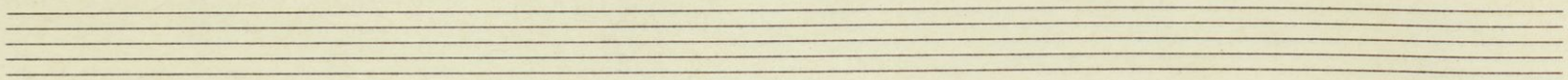
Ouverture lyrique.

(Mlle de Poitiers)

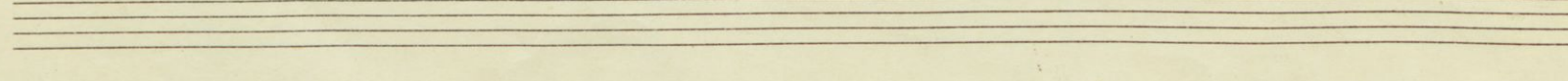
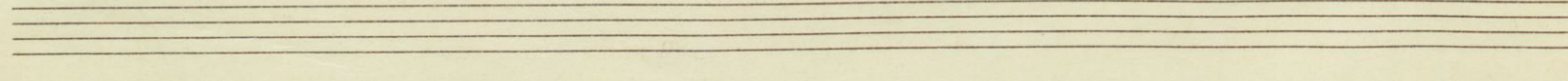
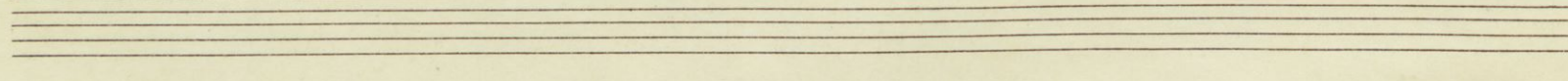
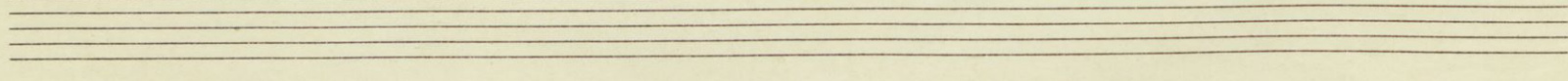
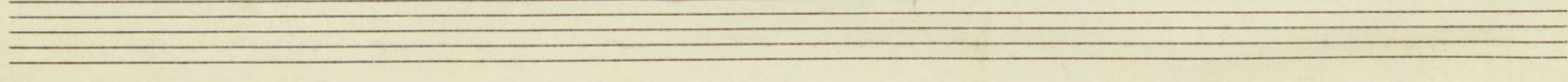
1. versij.

Lutherian  
1 p 25





MD 285/1993



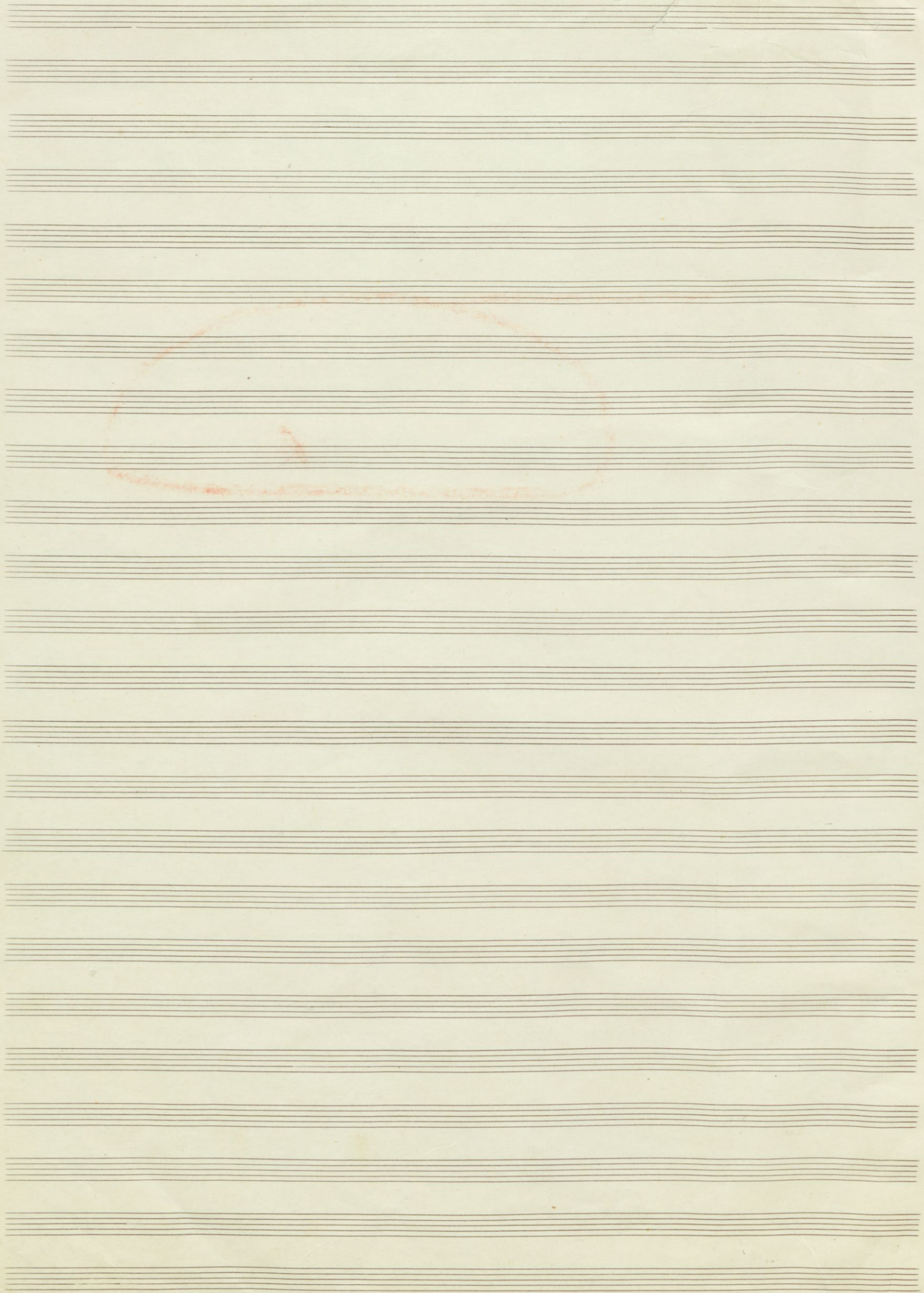
L. M. Škerjanec

~~Mlada Brezica~~

Prvotna instrumentacija.

Lastnina L. M. Škerjanca.

1800

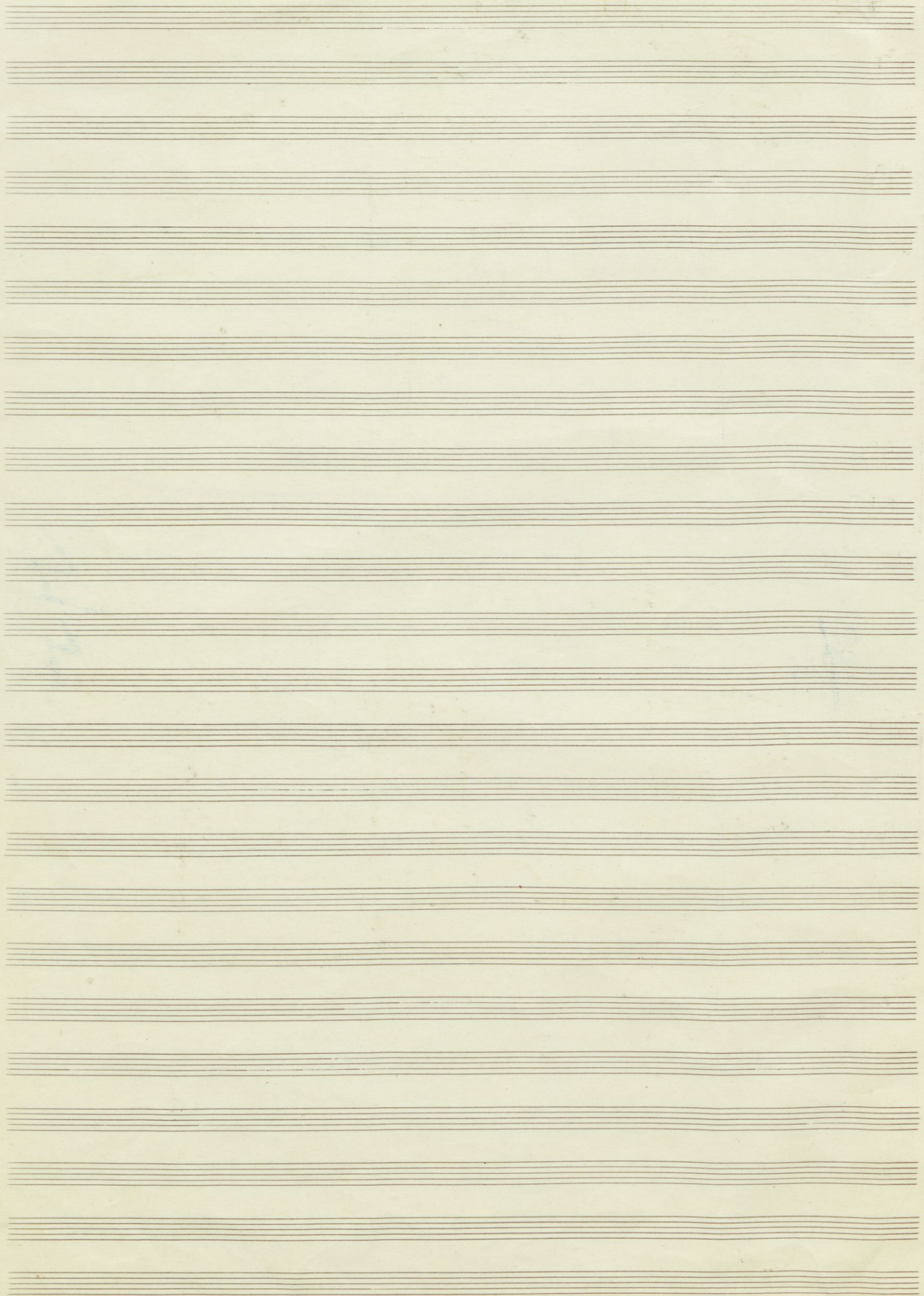


Overture lyrique.

Lucijan Marija

P. Kerjanc

1926





Con slancio.

Handwritten musical score for a symphony orchestra, including parts for woodwinds, brass, strings, and percussion. The score is written in a key signature of three sharps (F#, C#, G#) and a 3/4 time signature.

**Woodwinds:**

- 2 Flauti (Flutes)
- 2 Oboi (Oboes)
- 2 Clar. A (Clarinets in A)
- 2 Fagotti (Bassoons)
- 4 Corni F (Horns in F)
- 3 Trombe in C (Trumpets in C)
- Tromboni (Trumpets)
- Tuba
- Timpani
- Triangolo (Triangle)
- Perc. vari (Various Percussion)

**Strings:**

- vi. I (Violin I)
- vi. II (Violin II)
- vla. (Viola)
- vcl. (Violoncello)
- cb. (Contrabbasso)
- Arpa (Harp)
- Piano

**Performance Markings:**

- colla bacca* (with tongue)
- dirisi* (divisi)
- arco* (arco)
- gliss.* (glissando)
- con sord.* (with mutes)
- pp* (pianissimo)
- f* (forte)

**Time Signature Changes:**

- Large blue handwritten **3/4** is written over the Percussion staff.
- Large blue handwritten **4/4** is written on the right side of the page, spanning the Percussion and Violin II staves.

2.

Handwritten musical score with multiple staves. The score includes various instruments and parts:

- 2/4** (Two parts)
- 2ob** (Two Oboes)
- 2cl** (Two Clarinets)
- 2fg** (Two Flutes)
- corni** (Cornets)
- trp** (Trumpets)
- perc.** (Percussion)
- vl I, II** (Violins I and II)
- vla** (Viola)
- vcl** (Violoncello)
- cb** (Cello/Bass)
- Q** (Quintet)
- P.** (Piano)

The score is divided into two main sections by a blue vertical line. The left section is marked *rit.* (ritardando) and the right section is marked *a tempo* (at tempo). There are several large blue annotations: a large '4' on the Percussion staff, 'riten.' (ritardando) in the center, and '4 3/4 tempo' on the right side. Dynamics include *sub pp*, *pp*, *f*, and *mf*. Other markings include *arco*, *riten.*, and *2a. metà*. The time signature is 3/4.

Handwritten musical score for various instruments including 2 Flutes (2 Fl.), 2 Oboes (2 Ob), Clarinet (Cl), Bassoon (Fg), Trumpet (Tuba), Trombone (Timp), Percussion (Perc), Violin I (Vl I), Violin II (Vl II), Viola (Vla), Violoncello (Vlc), Double Bass (Cb), and Organ (a).

The score is divided into two main sections by a vertical blue line. The right section includes performance markings such as *ritenuto*, *ritu.*, *mf*, *molto*, *ritenuto*, *arco*, and *ritenuto*.

Handwritten annotations in blue ink include:

- A circled *cut* in the Trombone part.
- A circled *3+2* in the Trombone part.
- A large blue  $\frac{5}{4}$  written vertically in the Trombone part.
- A blue  $\frac{3}{4}$  written vertically on the right side of the page.
- A blue  $\frac{3}{4}$  written vertically on the right side of the page.
- A blue  $\frac{3}{4}$  written vertically on the right side of the page.

*a tempo*  
*sostenuto*

2 fl. *sempre*  
2 ob. *sempre*  
2 cl. *a2* *sempre*  
2 Fg. *sempre*  
Corni *sempre*  
Trbe *sempre*  
Perc. *sempre*

*a tempo* *sostenuto*

*sostenuto*

3 *sempre*  
4 *sempre*  
Vla *sempre*  
Vcl *sempre*  
Cb *sempre*  
R. *sempre*  
B. *sempre*

Handwritten musical score for woodwinds and strings. The staves are labeled on the left: fl (flute), ob (oboe), cl (clarinet), Fg (fagotto), c (corni), and strc (stringi). The music features complex rhythmic patterns and dynamic markings such as *mf*, *f*, and *pp*. There are also some handwritten annotations like "a2" above certain notes.

Handwritten musical score for string quartet. The staves are labeled on the left: vln I (violino I), vln II (violino II), vla (viola), and vcl (violoncello). The music consists of melodic lines with various articulations and dynamics.

Handwritten musical score for brass and woodwinds. The staves are labeled on the left: ff (fornice), ab (altobasso), cl (clarinet), Fg (fagotto), Corni (corni), vln (violino), vla (viola), vcl (violoncello), and cb (contrabbasso). This section includes performance instructions such as *solo*, *stentato*, *cresc.*, *div.*, and *tutti*. A prominent blue vertical line is drawn across the score, and large blue numbers "2/4" and "4/4" are written on the right side of the page, indicating a change in tempo or meter.

6 Più mosso

Handwritten musical score for woodwinds and strings. The score includes parts for Flute (fl), Oboe (ob), Clarinet (cl), Bassoon (bs), Trumpet (tr), Trombone (trbn), and Percussion (Tamp, Cr.). The tempo is marked "Più mosso". The score is heavily annotated with blue ink, including a large "f" (forte) dynamic marking, a large "4" in the Trombone part, and a large "3/4" in the Percussion part. A diagonal blue line with the text "Più mosso" is drawn across the lower woodwind parts.

Handwritten musical score for strings and piano. The string parts (violin, viola, cello, double bass) are shown with various rhythmic patterns and dynamics. The piano part includes chords and melodic lines, with some notes marked with an "x". The score is annotated with blue ink, including a large "4" in the Percussion part and a large "3/4" in the Piano part.

*a tempo*

Handwritten musical score for a symphony orchestra, featuring staves for woodwinds, strings, and percussion. The score includes various musical notations such as notes, rests, and dynamic markings.

**Woodwinds:** Flute (fl), Oboe (ob), Clarinet (cl), Bassoon (Fag), and Contrabassoon (Cb). The Clarinet part includes a second ending marked "2. p 3." and a first ending marked "1. sf".

**Strings:** Violin I (vlr), Violin II (vll), Viola (vll), Violoncello (vcl), and Contrabass (cb). The Violoncello part includes markings for "tutti", "div. ar", and "arco".

**Percussion:** Timpani (Timp), Snare Drum (Trb), and Cymbals (Zub). The Snare Drum part includes a large blue "3" and the Timpani part includes a large blue "4".

**Other markings:** A large blue "Tempo" is written across the middle of the page. A large blue "p" is written on the right side. A blue "alt" is written above the Violin II staff. A blue "ce" is written above the Clarinet staff. A blue "3" is written above the Snare Drum staff.

Handwritten musical score for the first system, featuring staves for Oboe (ob), Clarinet (cl), Bassoon (Fg), Trumpet (Timp), Violin I (vl1), Violin II (vl2), Viola (vla), and Cello (cs). The score includes various musical notations such as notes, rests, and dynamic markings like *f* and *ap*. A large blue circle is drawn around the 4/4 time signature in the middle of the system.

Handwritten musical score for the second system, featuring staves for Flute (fl), Oboe (ob), Clarinet (cl), Bassoon (Fg), Cori (Corti), Percussion (Perc), Violin I (vl1), Violin II (vl2), Viola (vla), and Cello (cs). The score includes various musical notations and dynamic markings. A large blue circle is drawn around the 4/4 time signature in the middle of the system, and a large blue '4' is written vertically on the right side of the system.

Handwritten notes on the right margin of the page, including instrument abbreviations: fl, ob, cl, Fg, vl1, vl2, vla, cs, fl, ob, cl, Fg, Corti, vl1, vl2, vla, cs, and arpa.



Handwritten musical score for the first system, featuring staves for Flute (fl), Oboe (ob), Clarinet (cl), Bassoon (fb), Violin I (vl1), Violin II (vl2), Viola (vln), and Cello/Double Bass (cb). The score includes dynamic markings such as *p*, *mp*, and *con fort*. A large blue '4' is written vertically on the left side of the system.

Handwritten musical score for the second system, featuring staves for Flute (fl), Oboe (ob), Clarinet (cl), Bassoon (fb), Corno (Corna), Violin I (vl1), Violin II (vl2), Viola (vln), Cello/Double Bass (cb), and Harp (arpa). The score includes dynamic markings such as *p*, *mp*, *pp*, and *f*. Performance instructions include *con sord.*, *senza sord.*, and *non dir.*. A large blue '5/4' is written vertically on the right side of the system.

Handwritten musical score for a symphony orchestra. The score is written on ten staves, each labeled with an instrument: Flute (Fl), Oboe (Ob), Clarinet (Cl), Bassoon (Fag), Cello (C), Violin I (VI), Violin II (II), Viola (Vla), Violoncello (Vcl), and Piano (Piano). The music is in 3/4 time and features complex melodic lines with many slurs and ties. A large blue vertical line is drawn through the score, with the number '5' written in blue ink to its left and '3+2' written in blue ink below it. The word 'Solo' is written above the Clarinet staff. The word 'pizz' (pizzicato) is written above the Viola and Violoncello staves. The score is written in black ink on aged paper.

Fl  
Ob  
Cl  
Fag  
C  
VI  
II  
Vla  
Vcl  
Vcl  
Cl  
C  
P

Handwritten musical score for a string quartet and piano. The score includes staves for Violin I, Violin II, Viola, Cello, Double Bass, and Piano. The music is in 2/4 time and features dynamic markings such as *pp* and *arco*. A blue vertical line is drawn across the score, and a blue *pp* marking is present in the Violin I part. The piano part includes a section with a 6/8 time signature.

Handwritten blue annotations on the right side of the page:

- A large blue *pp* marking.
- A blue vertical line.
- A blue time signature  $\frac{2}{4}$ .
- A blue  $\frac{4}{4}$  marking.

Handwritten musical score for orchestra. The score is divided into two systems by a blue vertical line. The left system is in 2/4 time, and the right system is in 3/4 time. The instruments listed on the left are: Flute (Fl.), Oboe (Ob.), Clarinet (Cl.), Bassoon (Fg.), Horns (1.2., 3., 4.), Trumpet (Trbe), Trombone (Trbn), Violin I (Vln I), Violin II (Vln II), Viola (Vla), Violoncello (Vcl), Double Bass (Cb), and Piano (P).

Key features of the score include:

- Tempo/Character:** *Andante* (written above the first staff).
- Time Signature Change:** A blue vertical line marks the transition from 2/4 to 3/4 time.
- Dynamic Markings:** *crescendo* is written in blue across the middle of the score.
- Rehearsal Marks:** Large blue numbers 2, 3, and 4 are written in the left margin, corresponding to measures 2, 3, and 4 of the score.
- Performance Indications:** *ff* (fortissimo) is written at the beginning of the first staff.
- Handwritten Annotations:** "a2" is written above the first staff. "5 C 4 D 4 2" is written above the Double Bass staff.
- Staff Details:** The score contains various musical notations including notes, rests, slurs, and accidentals (sharps, flats, naturals).

Handwritten notes in the right margin, likely serving as a checklist for the conductor or as performance cues. The notes include:

- fl.
- Ob
- Cl
- Fg
- 1.2.
- 3.
- 4.
- Trbe
- Trbn
- Vln I
- Vln II
- Vla
- Vcl
- Cb
- P.



Handwritten musical score for a symphony orchestra. The score is written on 15 staves, each labeled with an instrument or section:

- Fl.** (Flute)
- Ob.** (Oboe)
- Cl.** (Clarinet)
- Fg.** (Fagott/Bassoon)
- C.** (Corni)
- Tuba**
- Trimp.** (Trompe/Trombones)
- Viol.** (Violini)
- Vla.** (Viola)
- Vcl.** (Violoncelli)
- B.** (Bassi)
- Ch.** (Chorus)
- P.** (Percussion)

The score features complex notation with various dynamics (e.g., *f*, *mf*, *ff*), articulation marks, and phrasing slurs. A prominent blue ink scribble is present on the right side of the page, crossing several staves and including the number '4' written vertically. The word 'solemno' is written at the top of the page, and the number '73' is in the upper right corner.



*a tempo*

Fl  
ob  
cl  
Fg  
v1  
v2  
vla  
vcl  
Cb  
P

4

1.2.3.

3 3 3 3

Oplo

Fl  
ob  
cl  
v1  
v2  
Cb  
P  
Fl  
ob  
cl  
v1  
v2  
Cb  
P

Largo

Handwritten musical score for the first system, featuring staves for Violin I (Vl I), Violin II (Vl II), Viola (Vla), Violoncello (Vcl), Contrabasso (Cb), and Piano (P.). The score includes various musical notations such as notes, rests, and dynamic markings. A large blue scribble is present in the upper right quadrant, and the word "Largo" is written in blue ink over the score. A circled blue annotation "4 (2x3)" is also visible.

Handwritten musical score for the second system, continuing the instrumentation from the first system. This system features a prominent blue diagonal line across the upper staves. On the right side, there is a vertical blue line and a large blue "4" with a slash and another "4" below it, possibly indicating a measure count or a specific tempo marking.

Handwritten musical score for a symphony orchestra, page 16. The score includes staves for Oboe I, Clarinet I, Clarinet II, Bassoon, Trumpet I, Trombone I, Violin I, Violin II, Viola, Violoncello, and Double Bass. The music is in common time and features various dynamics, articulations, and performance markings. A blue vertical line is drawn through the first few staves, and a blue bracket on the right side groups the strings. The bottom half of the page contains several empty staves.

fl.  
vln I  
vln II  
vla  
vle  
ob  
cl  
Fg  
vln I  
vln II  
vle  
vle  
cb



*ff.*

*Solo*

Col. 1.

Col. 2.

Col. 3.

Col. 4.

Col. 5.

Col. 6.

Col. 7.

*al*

*crescendo* 1.

1.

*al*

*cres.*

*cresc.*

*cresc.*

*cresc.*

*cresc.*

*cresc.*

*cresc.*

*cresc.*

*cresc.*

*pizz*

*arco*

*pizz*

5/7

5/7

5/7

5/7

5/7

5/7

5/7

5/7

5/7

5/7

5/7

5  
4  
3+2

Handwritten musical score for a symphony orchestra. The score is written on 14 staves, each labeled with an instrument:

- Flute (fl):** First staff, featuring melodic lines with various accidentals.
- Oboe (ob):** Second staff, with melodic lines and some rests.
- Clarinet (cl):** Third and fourth staves, showing complex rhythmic patterns and melodic fragments.
- Fagott (Fg):** Fifth staff, primarily consisting of rests.
- Corino (Corno):** Sixth and seventh staves, containing melodic lines and dynamic markings like *f marc.* and *f mod.*
- Trombe (Trombe):** Eighth and ninth staves, mostly rests.
- Organo (Organo):** Tenth staff, mostly rests.
- Violini I (VI):** Eleventh staff, with melodic lines.
- Violini II (VII):** Twelfth staff, with melodic lines.
- Viola (Vla):** Thirteenth staff, with melodic lines.
- Violoncelli (Vcl):** Fourteenth staff, with melodic lines.
- Conti (Cb):** Fifteenth staff, with melodic lines.

Key features of the score include:

- Time Signature:** Changes from 7/8 to 4/4.
- Tempo/Character:** Markings include *f marc.* and *f mod.*
- Handwritten Annotations:** Large blue numbers '5', '3+2', and '4' are written in the left margin. A large blue '2/4' is written in the right margin. A blue '4/4' is written in the middle of the Trombe staves.
- Accidentals:** Numerous sharps, flats, and naturals are used throughout the score.

Handwritten notes on the right margin of the page, including:

- fl
- ob
- cl
- Fg
- C.
- Tromp.
- Trom.
- VI
- VII
- Vla
- Vcl
- Cb
- Piano
- Organo

*riten.* a tempo

Handwritten musical score for various instruments. The score is divided into two sections by a vertical blue line. The first section is marked *riten.* and the second is marked a tempo. The instruments listed on the left are:

- fl* (Flute)
- ob* (Oboe)
- cl* (Clarinet)
- fg* (Fagott)
- c.* (Corni)
- Tromp.* (Trumpets)
- Tromb.* (Trombones)
- vl I* (Violin I)
- vl II* (Violin II)
- vla* (Viola)
- vcl* (Violoncello)
- cb* (Contrabbasso)
- Piano* (Piano)
- Organo* (Organ)

The score includes various musical notations such as notes, rests, and dynamic markings. A large blue '4/4' is written vertically in the center of the page. There are also some handwritten annotations like 'tutti' and 'equ. h'.

Empty musical staves at the bottom of the page, consisting of ten blank five-line staves.

Handwritten musical score for a symphony orchestra. The score includes staves for Flute (fl), Oboe (ob), Clarinet (cl), Bassoon (Fg), Horns (Corni), Trumpets (Trombe), Trombones (Trombi), and Percussion (Perc). The music features various notes, rests, and dynamic markings such as *al* and *pp*. A prominent instruction *poco a poco crescendo* is written across the lower staves. The notation is in a cursive, handwritten style.

Handwritten notes on the right margin of the page, listing instrument parts: Fl, ob, cl, Fg, C. of, Trombe, Trombi, Tromp., Perc, vl, vla, vlc, cb, and Organo.

Handwritten musical score for orchestra, page 21. The score includes staves for Flute (Fl.), Oboe (Ob.), Clarinet (Cl.), Trumpet (Tr.), Trombone (Tbn.), Trumpet (Tr.), Horn (Hr.), Violin I (Vln I), Violin II (Vln II), Viola (Vla), Cello (Cb.), and Double Bass (Db.).

The score is divided into two systems. The first system covers measures 1 through 12, and the second system covers measures 13 through 24. The time signature is 3/4. The key signature is one sharp (F#).

Key features of the score include:

- Flute (Fl.):** Melodic line with slurs and accents.
- Oboe (Ob.):** Melodic line with slurs and accents.
- Clarinet (Cl.):** Melodic line with slurs and accents.
- Trumpet (Tr.):** Melodic line with slurs and accents.
- Trombone (Tbn.):** Melodic line with slurs and accents.
- Trumpet (Tr.):** Melodic line with slurs and accents.
- Horn (Hr.):** Melodic line with slurs and accents.
- Violin I (Vln I):** Melodic line with slurs and accents.
- Violin II (Vln II):** Melodic line with slurs and accents.
- Viola (Vla):** Melodic line with slurs and accents.
- Cello (Cb.):** Melodic line with slurs and accents.
- Double Bass (Db.):** Melodic line with slurs and accents.

Handwritten annotations in blue ink include:

- A large blue '6' written across the Trombone staff.
- A blue '4' written across the Trombone staff.
- A red '2' with a red 'X' over it written across the Trombone staff.
- A blue '3' written across the Trombone staff.
- A blue '4' written across the Trombone staff.
- A blue '3/4' written across the Trombone staff.
- A blue '1/4' written across the Trombone staff.
- A blue '1' written across the Trombone staff.
- A blue '1' written across the Trombone staff.
- A blue '1' written across the Trombone staff.

22 *Tempo I.*  
*Poco sost. ff*

fl  
ob  
cl  
Fg  
C  
Trb  
Trbn  
Timp  
Perc  
vli  
vli  
vla  
vcl  
Cb  
arpe

*ritard. e Diminuendo*

*Adagio.*

Handwritten musical score for orchestra, including parts for Flute (Fl<sup>a2</sup>), Oboe (ob<sup>a2</sup>), Clarinet (Cl), Bassoon (Fg), Horns (C, Trbn, Trbn<sup>2</sup>), Trumpets (Timp), Percussion (Perc), Violins (Vl I, Vl II), Viola (Vla), Cello (Vlc), Double Bass (Cb), and Cymbals (Cym). The score features a blue vertical line and blue annotations: "rit", "dim", and "Adagio".

*rit*  
*dim*  
*Adagio*

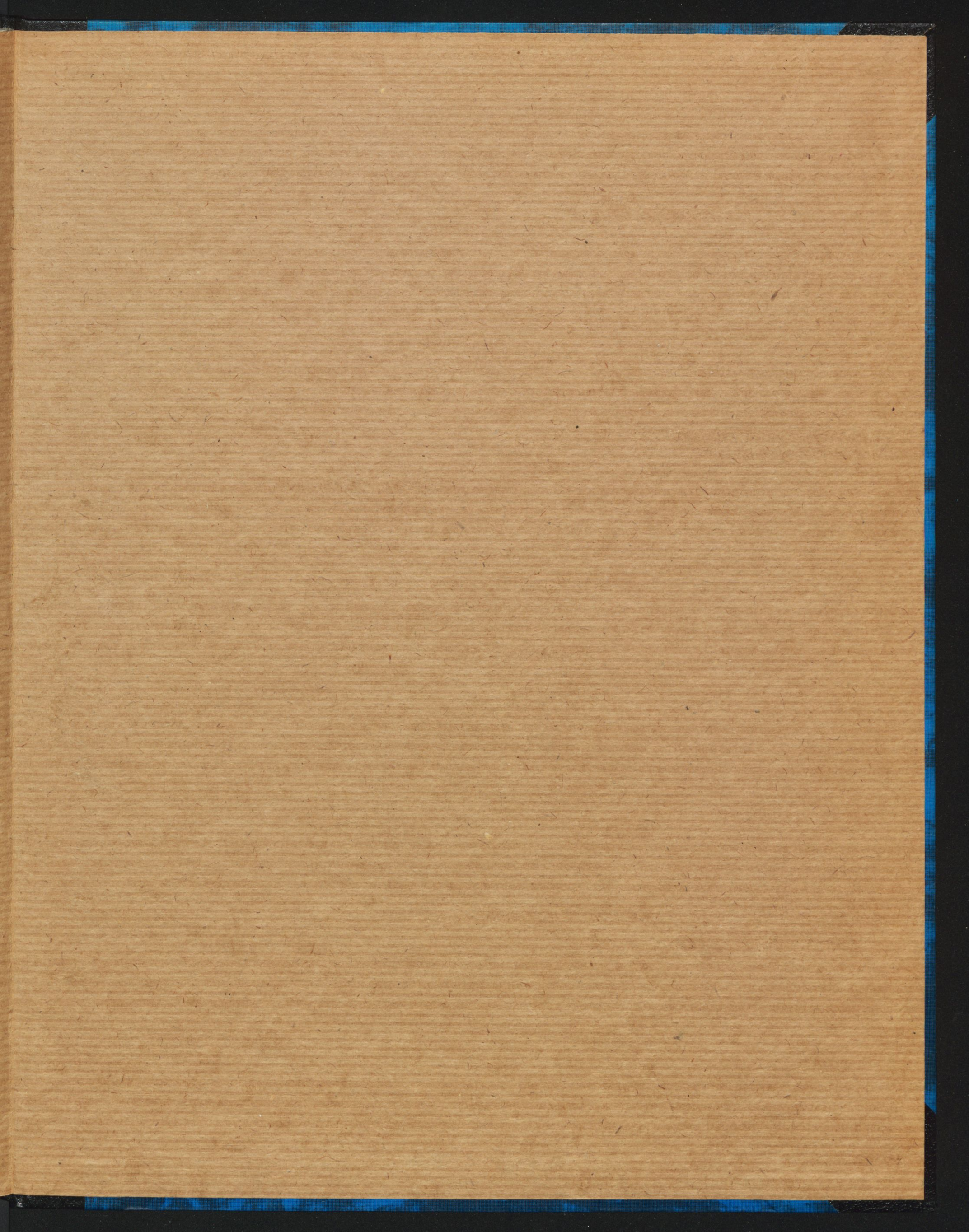
Fl<sup>a2</sup>  
ob<sup>a2</sup>  
Cl  
Fg  
C  
Trbn  
Trbn<sup>2</sup>  
Timp  
Perc  
Vl I  
Vl II  
Vla  
Vlc  
Cb  
Cym

Diminuendo

Ob.  
Cl.  
Fag.  
Corni  
Vcl.  
Vcl.  
Vcl.  
Cb.  
Arpe.

Fag.  
Cl.  
Corni  
Timp.  
Vcl.  
Vcl.  
Vcl.  
Cb.  
Arpe.





NARODNA IN UNIVERZITETNA KNJIŽNICA

M rkp  
Škerjanc, L. M.  
Ouverture



799300285

COBISS ©