

Željko Perdija^{1,2}, Stanislav Grosu^{1,3}, Dušan Nolim¹, Silvija Zeman⁴,
Walter Chingwaru^{1,4}, Marko Šetinc^{1,5}, Tanja Bagar^{1,5*}

Spoznavanje biokemijskih temeljev endokanabinoidnega sistema

POVZETEK

Odkritje endokanabinoidnega sistema (ECS) je bilo temeljnega pomena ne le pri razumevanju učinkov rastlinskih kanabinoidov, ampak je vodilo tudi do precej širšega biokemijskega delovanja našega telesa in odprlo velike terapevtske potencialne. Fitokanabinoidi in tudi sintetični kanabinoidi delujejo preko našega endokanabinoidnega sistema in razumevanje osnovne biokemije tega ključnega signalnega sistema omogoča vpogled v koristne in terapevtske učinke teh molekul. Na voljo je veliko raziskovalnih in znanstvenih člankov na temo kanabinoidov, ECS ter njihove vloge in vpliva na zdravje in potek bolezni. Številni podatki so tudi zbrani iz epidemioloških raziskav in iz Life science laboratorijev in vsi ti podatki dajejo bolnikom in zdravstvenim delavcem dobre osnove za uporabo kanabinoidov v medicini. Toda razumevanje biokemije ECS ter vloge tega signalnega sistema v človeški fiziologiji je ključ do pravilne uporabe teh močnih molekul.

Ključne besede: biokemija, receptorji, endokanabinoidni sistem, kanabinoidi.

1. Introduction

From a biochemical perspective human beings are very complicated. If we look only at one basic unit of life- the cell – biochemistry is already rather complex at this level. Cells are not just simple building blocks, unconscious and static as bricks in a wall. Cells can detect what's going on around them, and they can respond in real-time to cues from their neighboring cells and environment. At any moment, cells are sending and receiving millions of messages in the form of chemical signaling molecules and at any given moment there are over 10.000 biochemical reactions taking place inside each cell. All of these are coordinated and tightly regulated. Energy is reasonably used only for vital processes. But in our human biochemistry a single cell is not an individual unit of life, but rather a part of a tissue, an organ or a physiological system. So for a cell to be able to

function as a part of a whole system, it is vital for the cell to communicate with its environment. A cell is divided from its surroundings by a semipermeable membrane, a lipid bilayer with embedded proteins. The basic function of the cell membrane is to protect the cell from its surroundings. The cell membrane controls the movement of substances in and out of cells. In this way, it is selectively permeable to ions and organic molecules. In addition, cell membranes are involved in a variety of cellular processes such as cell adhesion, ion conductivity and cell signaling.

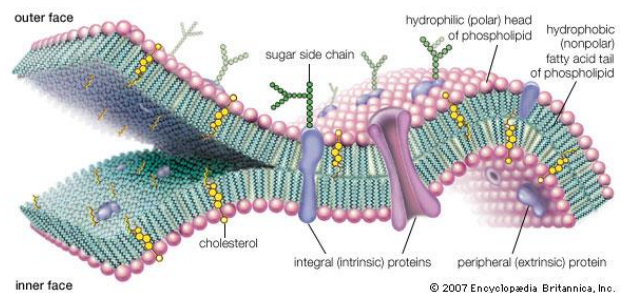


Figure 1: structure of the cellular membrane (source: <https://www.britannica.com/science/cell-membrane>)

Cellular communication is vital for all multicellular organisms and the more complex and evolved organisms are the higher is the importance of cellular communications. The basic setup needed for cellular communication or signaling is similar as in all communications. We need to know what message we want to send (a signaling molecule) and to who we want to send it to (who has the right receptors or antennas). Cells typically communicate using chemical signals. These are different types of molecules (cannabinoids are just one of many) produced by a sending cell and released into the extracellular space. There, they can float – like messages in a bottle – over to neighboring cells or into circulation.

¹ ICANNA - Mednarodni inštitut za kanabinoide

² CIIM plus - Center za interno in interventno medicino

³ University of Medicine and Pharmacy Nicolae Testemițanu Chisinau

⁴ Bindura University of Science Education Zimbabwe

⁵ Alma Mater Europaea – ECM

E-Mail: tanja.bagar@institut-icanna.com

* Avtor za korespondenco; Tel.: +386 (0)70 873 529

Not all cells can “hear” a particular chemical message. In order to detect a signal a cell must have the right receptor for that signal. When a signaling molecule binds to its receptor a shift takes place triggering a change inside the cell. Signaling molecules are often called ligands, a general term for molecules that bind specifically to other molecules (such as receptors).

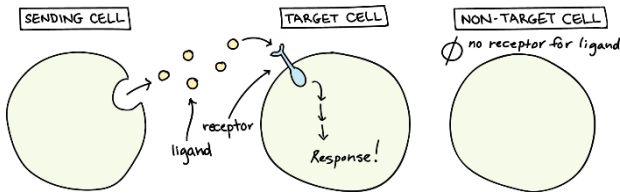


Figure 2: Schematic representation of cell signaling (source: <https://www.khanacademy.org>)

A signaling molecule and receptor recognize each other based on a unique 3D molecular structure. In essence a receptor will bind a molecule if its structure fits the receptors binding site in a very similar way as a key fits a keyhole. If it's a match the doors will open and if not, nothing will happen. If a signaling molecule and a receptor are a match, a cascade of downstream reactions will take place, ultimately, leading to a change in the cell, such as alteration in the expression of a gene or even the induction of a new process, such as cell division, apoptosis... Such communication not only enables the cells to respond to changes in the extracellular environment, adapt to these changes and thrive but also exchange signals between cells, tissues, organs, and whole body.

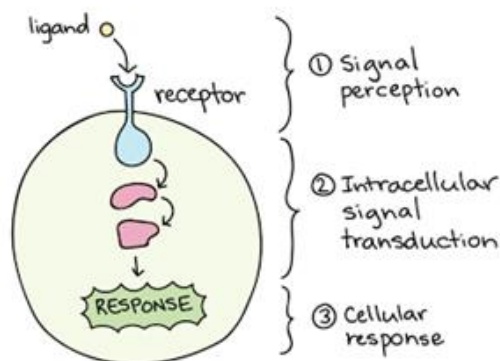


Figure 3: schematic representation of signal transduction (<https://www.khanacademy.org>)

Different types of cells have different set of receptors. And the cells are very economical in this sense, each cell expresses on its surface only the types of receptors that are very vital for their survival and only in the numbers that are needed. In cellular biochemistry there is not a molecule or a reaction too much, all of its function is highly optimized and adjusted according to the environment, stimuli and needs. Each specific cell type in our body has a specific set of receptors, the types and density of the receptors can change during the life of a cell, depending on the conditions a cell is exposed to.

In 1988, more than 4 decades after the first plant cannabinoid was discovered (CBD) and its structures elucidated, the first cannabinoid receptor was found. The existence of cannabinoid receptors puzzled scientists. More so after it was found that these receptors were very abundant on the membranes

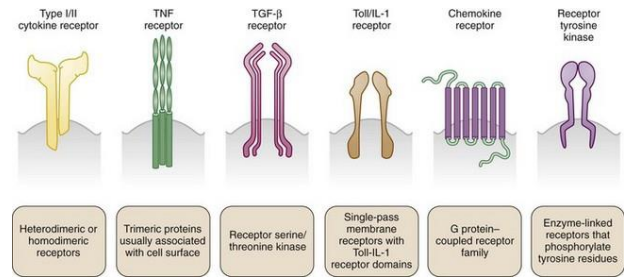


Figure 4: 3D structure of different types of receptors (source: Iain B. McInnes <https://musculoskeletalkey.com/cytokines/>)

of our cells. It did not make much sense that our bodies would be so sensitive and fine-tuned to these molecules, since there is only little chance that we might encounter and consume cannabis in our lifetimes. Another 20 years passed before the discovery of endocannabinoids, cannabinoids that are produced by human bodies, and not only by human, all vertebrates produce endocannabinoids. This was a major discovery that led to intense research into the role and functioning of this signaling system.

So in a way our endocannabinoid system is comparable to our hormonal system or our neurotransmitter system, although it is much more than that. The endocannabinoid system seems to be the enhanced version of an ancestral intercellular communication system that has been passed on evolution since plants appeared on the planet earth.

2. The biochemistry of the endocannabinoid system

All that we now know about cellular signaling, is true for the endocannabinoid system. We have cannabinoid receptors and ligands (cannabinoids). Taking into consideration that the research field of cannabinoids and endocannabinoid system is rather new and that the research was and is held back by legislation hurdles, we now know for sure is that we have at least 3 cannabinoid receptors: CB1, CB2 and CB3 (formerly known as the GPR55). There are several endocannabinoids know thus far, the best studied are the N-arachidonylethanolamide or anandamide and 2-arachidonoylglycerol or 2-AG (analogs to plant derived THC and CBD). For the production and the degradation of endocannabinoids we need enzymes that are pivotal for the optimal functioning of the endocannabinoids system. So the endocannabinoid system is composed of receptors, endocannabinoids and involved enzymes.

Cannabinoids are essentially messenger molecules, their role is to send signals, convey a message and the underlying biochemistry of the functioning of endocannabinoid system is similar as for majority of signaling systems (described in previous chapter).

The endocannabinoids anandamide and 2-AG are released upon demand from cell membrane-embedded phospholipid precursors. The primary biosynthetic enzyme of AEA is N-acylphosphatidylethanolamine phospholipase D (NAPE-PLD). 2-AG is biosynthesized by two isoforms of diacylglycerol lipase, DAGL α and DAGL β . AEA and 2-AG work in a homeostatic fashion, thus they are broken down after they activate CB1 or CB2. AEA is catabolized primarily by fatty acid amide

hydrolase 1 (FAAH1), and 2-AG is catabolized by monoacylglycerol lipase (MAGL), and, to a lesser extent, α , β -hydrolase-6 (ABHD-6), cyclooxygenase 2 (COX2), and FAAH1. So cannabinoids are not molecules to circulate in our system and be present in high concentration, rather they are synthesized where and when they are needed and then degraded. In this respect they differ from hormones for example. Their low physiological concentration was one of the reasons why it took researchers so long to prove the existence of endocannabinoids.

There is another specificity to the mode of action of cannabinoids. They are retrograde messengers, sending the signal from the postsynaptic cell to the presynaptic. Cannabinoids are released from depolarized postsynaptic neurons presumably in a calcium-dependent manner and act retrogradely onto presynaptic cannabinoid receptors to suppress neurotransmitter release. So cannabinoids modulate neuronal excitability by inhibiting synaptic transmission. So these endogenously synthesized cannabinoids, but also phytocannabinoids and synthetic analogs appear to act as retrograde signalling agents, reducing synaptic inputs onto the stimulated neuron in a highly selective and restricted manner. This being one of the reasons why cannabinoid receptors were found later than for example opioid receptors. Just as a comparison the major active ingredient of opium was discovered in 1799 and in 1973 the receptor, whereas THC as the active ingredient of cannabis was discovered in 1964 and the receptor in 1988.

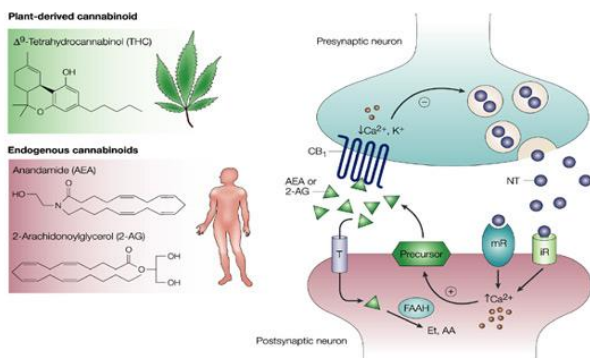


Figure 5: Schematic representation of the endocannabinoid system (ECS) (source: <https://www.nature.com/articles/nrc3247>)

2.2 Cannabinoids receptors

Now let's have a closer look at the cannabinoid receptors. What all three cannabinoid receptors have in common is that they are all G-protein coupled transmembrane receptors (GPCR). When a ligand (cannabinoid) binds to the GPCR it causes a conformational change in the receptor, which allows it to act as a guanine nucleotide exchange factor. The GPCR can then activate an associated G protein by exchanging the GDP bound to the G protein for a GTP. The G protein's α subunit, together with the bound GTP, can then dissociate from the β and γ subunits to further affect intracellular signaling proteins or target functional proteins directly depending on the α subunit type. GPCRs are an important drug target and approximately 34% of all Food and Drug Administration (FDA) approved drugs target this family of proteins.

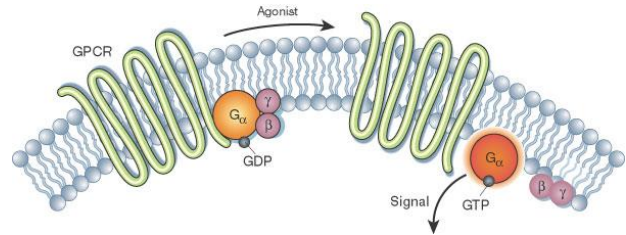


Figure 6: The structure of G coupled receptors or GPR's and their activation by agonist (source: <http://gpcr.utep.edu/background>)

So basically a part of the receptor is on the outside of the cell, facing the extracellular space (the environment) sensing changes in the concentration of cannabinoids, and a part of the receptor is on the inside of the cell (conveying the message on what is going on outside). All three receptors cross the membrane 7 times and are coupled with a G-protein that sends the signal towards the cell nucleus. Thereby enabling the cell to respond to changes in its environment. Through a complex biochemical cascade the message is sent to the nucleus and changes in gene expression take place and enable cell response. What kind of a response a cell will give depends on many factors, including cell type, the chemistry of the cannabinoids, concentration of cannabinoid molecules, presence of other molecules and also the number or density of cannabinoid receptors on the cell surface. To fully understand the physiological roles the endocannabinoid system has in our body, we have to take a look at where anatomically we have cannabinoid receptors, so what organs or tissues can hear the message cannabinoids are sending.

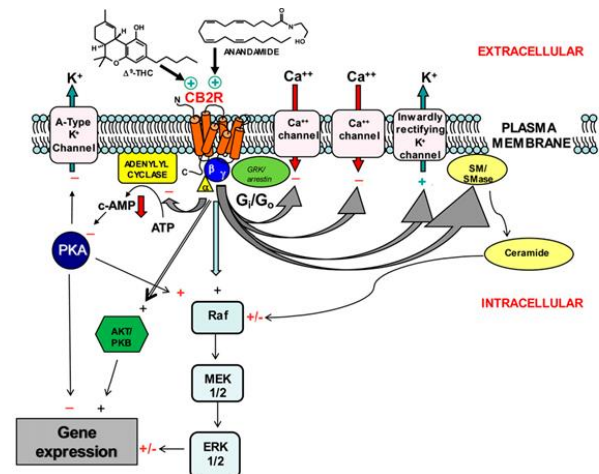


Figure 7: Activation of the cannabinoid receptors and following intracellular signaling (source: https://www.researchgate.net/figure/Activation-of-CB-2-receptors-by-natural-or-synthetic-ligands-favors-a-range-of-receptor_fig1_264631508)

The CB1 receptor is one of the most abundant G protein-coupled receptors (GPCRs) in the central nervous system and is found in particularly high levels in the neocortex, hippocampus, basal ganglia, cerebellum and brainstem. They are less expressed in the amygdala, hypothalamus, nucleus accumbens, thalamus, periaqueductal grey matter and the spinal cord, as well as in other brain areas, mainly in the telencephalon and diencephalon. CB1 receptors are also expressed in several peripheral organs. Thus, they are present in adipocytes, liver,

selectively bind to cannabinoids in general (thus, anandamide and 2-AG might not be the only endocannabinoids); and

3) again, as a consequence, “endocannabinoid enzymes” would not only be NAPE-PLD, the two DAGLs, FAAH, and MAGL, but also other enzymes responsible for the biosynthesis and inactivation of the other mediators to be eventually included in the list of the endocannabinoids.

Although this broader view would seem like the natural “evolution” of the definition of the “endocannabinoid system”, things are likely to be even more complicated. First, endocannabinoids, and also cannabinoids, have more molecular targets than just CB1, CB2, CB3 and thermo-TRPs, and these receptors appear to extend also to proteins that are targeted by other endogenous and exogenous substances. Furthermore, anandamide and 2-AG, like most other lipid mediators, have more than just 1 set of biosynthetic and degrading pathways and enzymes each which they often share with “endocannabinoid-like” mediators that may or may not be part of the extended definition of “endocannabinoids” provided above, that is, they may or may not interact with the same proteins to which non-THC cannabinoids bind. In some cases, these degrading pathways and enzymes lead to molecules, such as the prostamides and prostaglandin-glycerol esters which are not inactive but instead interact with other receptors, that is, these enzymes are “degrading” for endocannabinoids and “biosynthetic” for other mediators. Finally, some of these enzymes may also have additional completely different functions, for example participate in the chemical modification of molecules that have very little to do with endocannabinoid and cannabinoid targets.

As a result of the above reasoning, some authors now use an extended definition of the endocannabinoid system, such the “enlarged endocannabinoid system”. For the sake of clarity a new term was introduced the “endocannabinoidome” and represents the ensemble of endocannabinoids, endocannabinoid-like mediators, and their several receptors and metabolic enzymes.

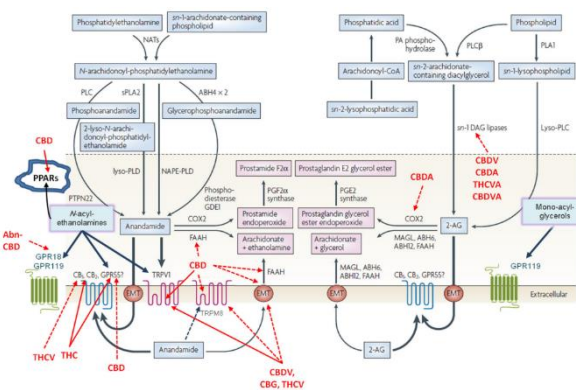


Figure 10: The endocannabinoidome (source: <https://www.semanticscholar.org/paper/The-Endocannabinoid-System-and-its-Modulation-by-Marzo-Piscitelli/a5b336dc28cb961a9375d03b57e10c1ff37241de>)

3. The physiological role of the ECS

So all in all the role of the endocannabinoids system is very complex. It affects the majority of the systems in our bodies and the cannabinoid receptors are expressed (in different density) on

majority of cell types. So describing what exactly it does, is not an easy task, as it regulates the biochemistry of vast majority of 37 trillion cells in our body. Research has shown that the endocannabinoids system functions as an SOS mechanism that is activated whenever our bodies are out of balance for whatever reason. So example it is activated when we suffer from a physical injury, when we encounter pathologic microbes and also when we feel emotional pain or are under stress.

It seems that the ECS serves as a general protective mechanism, starting at the cellular level, proceeding to the tissues, organs, body and our general well-being. The ECS’s salient homeostatic roles have been summarized as, “relax, eat, sleep, forget, and protect”. It is known to modulate embryological development, neural plasticity, neuroprotection, immunity and inflammation, apoptosis and carcinogenesis, pain and emotional memory, and most importantly from the viewpoint of recent drug development: hunger, feeding, and metabolism. It is well worth noting that human breast milk contains significant amounts of endocannabinoids (less of AEA and high levels of 2-AG). The oral administration of endocannabinoids produces calming properties. Experiments with suckling models in mice showed that when newborn mice are fed the CB1 antagonist (SR141716A), they stop suckling and die. So the disruption of the ECS in the first 24 hours after birth seems to be lethal.

Albeit the cells seem like very dynamic structures, with many 1000 biochemical reactions happening simultaneously, all the parameters are very tightly regulated. From temperature, to osmotic pressure, pH level, redox potential, concentration of ions, nutrients, enzymes... So it’s a dynamic structure, but within strict limits. For example when the intracellular pH value changes by 0,1 pH unit many cellular processes are activated to return the value to optimum. This a termed cellular homeostasis. This is the tendency of cells or organisms to auto-regulate and maintain their internal environment in a stable state. The stable condition is the condition of optimal functioning for the organism. It is brought about by a natural resistance to change in the optimal conditions and homeostasis or equilibrium is maintained by many regulatory mechanisms, some general (like the ECS) and some very specific.

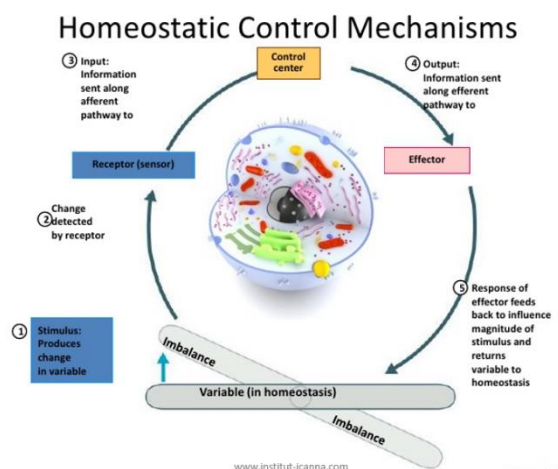


Figure 11: The cycle of homeostatic control mechanisms (source: <https://antaology.wordpress.com/2012/10/08/what-is-homeostasis/>)

So starting from a cellular level, the ECS is a protective mechanism that is turned on, like a SOS mechanism, when the cellular homeostasis is out of balance. It is like the first line of defense to go off, activating all other mechanisms needed to return to homeostasis as soon as possible.

Living in today's modern society is giving many challenges to our endocannabinoids system and leading to exhaustion of the supply of endocannabinoids. If we take a look at one ordinary day, getting up, getting ourselves and kids ready for work and school, all in a time stress, being in traffic, responsible and stressful jobs, challenging relationships, toxic environment, contaminated food, water and air...it is obvious that in one ordinary day our ECS is facing more challenges than it would in a month or longer even 100 years ago. If our endocannabinoid system is constantly challenged over a longer period of time, this vital SOS mechanism starts to dysfunction. It can dysfunction either not producing endocannabinoids when we need them, or producing endocannabinoids when we do not need them. This is usually one of the first steps in the development of chronic disease, the first dominoe dice in a complex dominoe structure to fall, leading to symptoms and disease development. And in such cases, where the ECS is malfunctioning, use implementation of exogenous cannabinoids can be very beneficial.

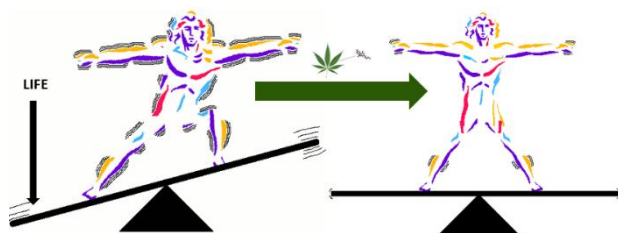


Figure 12: Representation of homeostatic mechanism and the role of cannabinoids (source: Institute ICANNA)

Some emerging literature documents the "ECS deficiency syndrome" as an etiology in migraine, fibromyalgia, irritable bowel syndrome, psychological disorders, and other conditions. The theory of clinical endocannabinoid deficiency (CED) was presented in 2001. The theory of CED was based on the concept that many brain disorders are associated with neurotransmitter deficiencies, affecting acetylcholine in Alzheimer's disease, dopamine in parkinsonian syndromes, serotonin and norepinephrine in depression, and that a comparable deficiency in endocannabinoid levels might be manifest similarly in certain disorders that display predictable clinical features as sequelae of this deficiency.

All humans possess an underlying endocannabinoid tone that reflects of levels of anandamide (AEA) and 2-arachidonoylglycerol (2-AG), the centrally acting endocannabinoids, their synthesis, catabolism, and the relative density of cannabinoid receptors in the brain. If endocannabinoid function were decreased, it follows that a lowered pain threshold would be operative, along with derangements of digestion, mood, and sleep among the almost universal physiological systems subserved by the endocannabinoid system. The CED theory also posits that such

deficiencies could arise due to genetic or congenital reasons or be acquired due to intercurrent injury or disease that consequently produces characteristic pathophysiological syndromes with particular symptomatology. The greatest evidence for CED is present for migraine, fibromyalgia, and irritable bowel syndrome (IBS).

Other diseases are also associated with suboptimal functioning of the ECS, Fride speculated that a dysfunctional ECS in infants contributes to "failure to thrive" syndrome. Hill and Gorzalka hypothesized that deficient ECS signaling could be involved in the pathogenesis of depressive illnesses. In human studies ECS deficiencies have been implicated in uncompensated schizophrenia, migraine, multiple sclerosis, Huntington's, uncompensated Parkinson's, irritable bowel syndrome, uncompensated anorexia, and chronic motion sickness.

Conclusions

There is a large body of evidence that the endocannabinoids regulate mood, emotion, motivation, memory, pleasure perception, appetite, metabolism and more. The connection between cannabinoids and health/disease has long been empirically and scientifically established. Once we understand the functioning and the role of the unique system in our bodies, we need to employ action to nourish and support the function of this system and start with cannabinoid intervention in situations where it is evident that the ECS is no longer performing its protective function. It is high time for medicine worldwide to catch up with research findings and patient's demands and harness the effects of cannabinoids to support or restore the cellular biochemical homeostasis, which serves as the cornerstone of health.

References:

1. ABRAHAMOV A, ABRAHAMOV A, MECHOULAM R. AN EFFICIENT NEW CANNABINOID ANTIEMETIC IN PEDIATRIC ONCOLOGY. *LIFE SCI* 1995;56(23-24):2097-102.
2. ADAMS R. MARIHUANA. HARVEY LECTURES 1941-1942; 37: 168-197.
3. ALGER BE, KIM J. SUPPLY AND DEMAND FOR ENDOCANNABINOIDS. *TRENDS NEUROSCI.* 2011 JUN;34(6):304-15.
4. ANDONIAN DO, SEAMAN SR, JOSEPHSON EB. PROFOUND HYPOTENSION AND BRADYCARDIA IN THE SETTING OF SYNTHETIC CANNABINOID INTOXICATION - A CASE SERIES. *AM J EMERG MED.* 2017;35(6):940.
5. ANISMAN H, MERALI Z, HAYLEY S. 2008. NEUROTRANSMITTER, PEPTIDE AND CYTOKINE PROCESSES IN RELATION TO DEPRESSIVE DISORDER: COMORBIDITY BETWEEN DEPRESSION AND NEURODEGENERATIVE DISORDERS. *PROGRESS IN NEUROBIOLOGY.* 85(1): 1-74
6. APPENDINO G, GIBBONS S, GIANA A, PAGANI A, GRASSI G, STAVRI M, SMITH E, RAHMAN MM. ANTIBACTERIAL CANNABINOIDS FROM CANNABIS SATIVA: A STRUCTURE-ACTIVITY STUDY. *J NAT PROD.* 2008;71(8):1427-30.
7. BACKES M. CANNABIS PHARMACY: THE PRACTICAL GUIDE TO MEDICAL MARIJUANA PAPERBACK 2014
8. BERRIDGE KC, KRINGELBACH ML. BUILDING A NEUROSCIENCE OF PLEASURE AND WELL-BEING. *PSYCHOL WELL BEING.* 2011 OCT 24;1(1):1-3.

9. BEST AR, REGEHR WG. SEROTONIN EVOKES ENDOCANNABINOID RELEASE AND RETROGRADELY SUPPRESSES EXCITATORY SYNAPSES. *J NEUROSCI.* 2008 JUN 18;28(25):6508-15.
10. BLESCHING U. THE CANNABIS HEALTH INDEX. 2105. NORTH ATLANTIC BOOKS, BARKELEY, CALIFORNIA.
11. BOLOGNINI D, ROCK EM, CLUNY NL, CASCIO MG, LIMEBEER CL, DUNCAN M, STOTT CG, JAVID FA, PARKER LA, PERTWEE RG. CANNABIDIOLIC ACID PREVENTS VOMITING IN SUNCUS MURINUS AND NAUSEA-INDUCED BEHAVIOUR IN RATS BY ENHANCING 5-HT1A RECEPTOR ACTIVATION. *BR J PHARMACOL* 2013; 168(6): 1456–1470.
12. BONSOR K. GERBIS N. HOW MARIJUANA WORKS. DOSTOPNO: [HTTPS://SCIENCE.HOWSTUFFWORKS.COM/MARIJUANA3.HT M](https://science.howstuffworks.com/marijuana3.htm)
13. BORGWARDT SJ, ALLEN P, BHATTACHARYYA S, FUSAR-POLI P, CRIPPA JA, SEAL ML, FRACCARO V, ATAKAN Z, MARTIN-SANTOS R, O'CARROLL C, RUBIA K, MCGUIRE PK. NEURAL BASIS OF DELTA-9-TETRAHYDROCANNABINOL AND CANNABIDIOL: EFFECTS DURING RESPONSE INHIBITION. *BIOL PSYCHIATRY.* 2008 DEC 1;64(11):966-73.
14. BORRELLI F, FASOLINO I, ROMANO B, CAPASSO R, MAIELLO F, COPPOLA D, ORLANDO P, BATTISTA G, PAGANO E, DI MARZO V, IZZO AA. BENEFICIAL EFFECT OF THE NON-PSYCHOTROPIC PLANT CANNABINOID CANNABIGEROL ON EXPERIMENTAL INFLAMMATORY BOWEL DISEASE. *BIOCHEM PHARMACOL.* 2013;1;85(9): 1306-16.
15. BORRELLI F, PAGANO E, ROMANO B, PANZERA S, MAIELLO F, COPPOLA D, DE PETROCELLIS L, BUONO L, ORLANDO P, IZZO AA. COLON CARCINOGENESIS IS INHIBITED BY THE TRPM8 ANTAGONIST CANNABIGEROL, A CANNABIS-DERIVED NON-PSYCHOTROPIC CANNABINOID. *CARCINOGENESIS* 2014;35(12): 2787-97.
16. CARLINI EA, CUNHA JM: HYPNOTIC AND ANTIEPILEPTIC EFFECTS OF CANNABIDIOL. *J CLIN PHARMACOL* 1981;21:417S–427S.
17. CASAJUANA C, LÓPEZ-PELAYO H, BALCELLS MM, COLOM J, GUAL A. PSYCHOACTIVE CONSTITUENTS OF CANNABIS AND THEIR CLINICAL IMPLICATIONS: A SYSTEMATIC REVIEW.. *ADICCIONES.* 2017 JUL 14;0(0):858.
18. CONSROE P, KENNEDY K, SCHRAM K. ASSAY OF PLASMA CANNABIDIOL BY CAPILLARY GAS CHROMATOGRAPHY/ION TRAP MASS SPEC- TROSCOPY FOLLOWING HIGH-DOSE REPEATED DAILY ORAL ADMINISTRATION IN HUMANS. *PHARMACOL. BIOCHEM. BEHAV.* 1991;40: 517-522.
19. CROXFORD JL, YAMAMURA T. CANNABINOIDS AND THE IMMUNE SYSTEM: POTENTIAL FOR THE TREATMENT OF INFLAMMATORY DISEASES? *JOURNAL OF NEUROIMMUNOLOGY* 2005;166(1-2),3-18.
20. CUNHA JM, CARLINI EA, PEREIRA AE, PIMENTEL C, GAGLIARDI R, ET AL.: CHRONIC ADMINISTRATION OF CANNABIDIOL TO HEALTHY VOLUNTEERS AND EPILEPTIC PATIENTS. *PHARMACOLOGY* 1980;21:175–185.
21. DANIA M, GUINDON J, LAMBERT C, BEAULIEU P (2007) THE LOCAL ANTINOCICEPTIVE EFFECTS OF PARACETAMOL IN NEUROPATHIC PAIN ARE MEDIATED BY CANNABINOID RECEPTORS. *EUROPEAN JOURNAL OF PHARMACOLOGY* 573: 214–215.
22. DI FRANCESCO A, FALCONI A, DI GERMANIO C, MICIONI DI BONAVENTURA MV, COSTA A, CARAMUTA S, DEL CARLO M, COMPAGNONE D, DAINESE E, CIFANI C, MACCARRONE M, D'ADDARIO C. 2015. EXTRAVIRGIN OLIVE OIL UP-REGULATES CB1 RUMOR SUPPRESSOR GENE IN HUMAN COLON CANCER CELLS AND IN RAT COLON VIA EPIGENETIC MECHANISMS. *JOURNAL OF NUTRITIONAL BIOCHEMISTRY.* 26(3): 250-258.
23. FERNANDEZ-EGEA E, VERTES PE, FLINT SM, TURNER L, MUSTAFA S, HATTON A, SMITH KGC, LYONS PA, BULLMORE ET. 2016. PERIPHERAL IMMUNE CELL POPULATIONS ASSOCIATED WITH COGNITIVE DEFICITS AND NEGATIVE SYMPTOMS OF TREATMENT-RESISTANT SCHIZOPHRENIA. *PLOS ONE.* [HTTP://DX.DOI.ORG/10.1371/JOURNAL.PONE.0155631](http://dx.doi.org/10.1371/journal.pone.0155631)
24. FERRE S, GOLDBERG SR, LLUIS C, FRANCO R. 2009. LOOKING FOR THE ROLE OF CANNABINOID RECEPTOR HETEROMERS IN STRIATAL FUNCTION. *NEUROPHARMACOLOGY.* 56(SUPPL 1): 226-234
25. FROST L, MOSTOFKY E, ROSENBLUM JI, MUKAMAL KJ, MITTLEMAN MA. MARIJUANA USE AND LONG-TERM MORTALITY AMONG SURVIVORS OF ACUTE MYOCARDIAL INFARCTION. *AM HEART J.* 2013 FEB;165(2):170-5.
26. GAONI Y, MECHOULAM R. ISOLATION, STRUCTURE AND PARTIAL SYNTHESIS OF AN ACTIVE CONSTITUENT OF HASHISH. *J. AMER. CHEM. SOC.* 1964; 86: 1646–1647.
27. GEZ E, BIRAN S, FUKS Z, EDELSTEIN E, LANDER N, MECHOULAM R. A MARIHUANA COMPONENT FOR NAUSEA AND VOMITING INDUCED BY CHEMO- AND RADIOTHERAPY. *HAREFUAH* 1983;105(10):306-8.
28. GROTENHERMEN F, RUSSO E, ZUARDI AW. EVEN HIGH DOSES OF ORAL CANNABIDOL DO NOT CAUSE THC-LIKE EFFECTS IN HUMANS: COMMENT ON MERRICK ET AL. *CANNABIS AND CANNABINOID RESEARCH* 2016;1(1):102-112; *CANNABIS CANNABINOID RES.* 2017 JAN 1;2(1):1-4.
29. HAMPSON AJ, GRIMALDI M, AXELROD J, WINK D. 1998. CANNABIDIOL AND (-)DELTA9-TETRAHYDROCANNABINOL ARE NEUROPROTECTIVE ANTIOXIDANTS.
30. HANUŠ LO, MEYER SM, MUÑOZ E, TAGLIALATELA-SCAFATI O, APPENDINO G. PHYTOCANNABINOIDS: A UNIFIED CRITICAL INVENTORY. *NAT PROD REP.* 2016 NOV 23;33(12):1357-1392. REVIEW.
31. HARVEY DJ, MARTIN BR, PATON WDM. IDENTIFICATION AND MEASUREMENT OF CANNABINOIDS AND THEIR IN VIVO METABOLITES IN LIVER BY GAS CHROMATOGRAPHY-MASS SPECTROMETRY. IN: NAHAS GG, PATON WDM (EDS) *MARIJUANA: BIOLOGICAL EFFECTS.* PERGAMON PRESS, OXFORD, 1979: 45–62.
32. IFFLAND K, GROTENHERMEN F. AN UPDATE ON SAFETY AND SIDE EFFECTS OF CANNABIDIOL: A REVIEW OF CLINICAL DATA AND RELEVANT ANIMAL STUDIES. *CANNABIS CANNABINOID RES.* 2017 JUN 1;2(1):139-154.
33. LAPRAIRIE RB, BAGHER AM, KELLY ME, DENOVA-WRIGHT EM. CANNABIDIOL IS A NEGATIVE ALLO- STERIC MODULATOR OF THE CANNABINOID CB1 RECEPTOR. *BR. J. PHARMACOL.* 2015;172:4790–4805.
34. LEE AM, SMOKE SIGNALS: A SOCIAL HISTORY OF MARIJUANA - MEDICAL, RECREATIONAL AND SCIENTIFIC. SCRIBNER 2012.
35. MARTIN-SANTOS R, CRIPPA JA, BATALLA A, BHATTACHARYYA S, ATAKAN Z, BORGWARDT S, ALLEN P, SEAL M, LANGOHR K, FARRÉ M, ZUARDI AW, MCGUIRE PK. ACUTE EFFECTS OF A SINGLE, ORAL DOSE OF D9-TETRAHYDROCANNABINOL (THC) AND CANNABIDIOL (CBD) ADMINISTRATION IN HEALTHY VOLUNTEERS. *CURR. PHARM. DES.* 2012;18: 4966–4979.
36. MATSUNAGA M1, ISOWA T2, YAMAKAWA K3, FUKUYAMA S4, SHINODA J4, YAMADA J4, OHIRA H3. GENETIC VARIATIONS IN THE HUMAN CANNABINOID RECEPTOR GENE ARE ASSOCIATED WITH HAPPINESS. *PLOS ONE.* 2014 APR 1;9(4).

37. MCPARTLAND JM, DUNCAN M, DI MARZO V, PERTWEE RG. ARE CANNABIDIOL AND DELTA-9 TETRAHYDROCANNABIVARIN NEGATIVE MODULATORS OF THE ENDO-CANNABINOID SYSTEM? A SYSTEMATIC REVIEW. *BR. J PHARMA-COL.* 2015; 172: 737-753.
38. MCPARTLAND JM, GUY GW, DI MARZO V. CARE AND FEEDING OF THE ENDOCANNABINOID SYSTEM: A SYSTEMATIC REVIEW OF POTENTIAL CLINICAL INTERVENTIONS THAT UPREGULATE THE ENDOCANNABINOID SYSTEM. *PLOS ONE.* 2014 MAR 12;9(3).
39. MECHOULAM R, BEN-SHABAT S, HANUS L, LIGUMSKY M, KAMINSKI NE, SCHATZ AR, GOPHER A, ALMOG S, MARTIN BR, COMPTON DR, ET AL. IDENTIFICATION OF AN ENDOGENOUS 2-MONOGLYCERIDE, PRESENT IN CANINE GUT, THAT BINDS TO CANNABINOID RECEPTORS. *BIOCHEM. PHARMACOL.* 1995; 50: 83-90.
40. MECHOULAM R1. PLANT CANNABINOIDS: A NEGLECTED PHARMACOLOGICAL TREASURE TROVE. *BR J PHARMACOL.* 2005 DEC;146(7):913-5. DI MARZO V, PISCITELLI F. THE ENDOCANNABINOID SYSTEM AND ITS MODULATION BY PHYTOCANNABINOIDS. *NEUROTHERAPEUTICS.* 2015 OCT;12(4):692-8. DOI: 10.1007/S13311-015-0374-6. REVIEW.
41. MERRICK J, LANE B, SEBREE T, YAKSH T, O'NEILL C, BANKS SL. IDENTIFICATION OF PSYCHOACTIVE DEGRADANTS OF CANNABIDIOL IN SIMULATED GASTRIC AND PHYSIOLOGICAL FLUID. *CANNABIS CANNABINOID RES.* 2016;1: 102-112.
42. MICHAEL POLLAN. THE BOTANY OF DESIRE: A PLANT'S-EYE VIEW OF THE WORLD, RANDOM HOUSE TRADE PAPERBACKS, 2002
43. MORALES P, HURST DP, REGGIO PH. MOLECULAR TARGETS OF THE PHYTOCANNABINOIDS: A COMPLEX PICTURE. *PROG CHEM ORG NAT PROD.* 2017;103:103-131. DOI: 10.1007/978-3-319-45541-9_4. REVIEW.
44. NICHOLSON AN, TURNER C, STONE BM, ROBSON PJ. EFFECT OF DELTA-9-TETRAHYDRO-CANNABINOL AND CANNABIDIOL ON NOCTURNAL SLEEP AND EARLY-MORNING BEHAVIOR IN YOUNG ADULTS. *J. CLIN.PSYCHOPHARMACOL* 2004;24,305-313.
45. O'CONNELL BK, GLOSS D, DEVINSKY O. CANNABINOIDS IN TREATMENT-RESISTANT EPILEPSY: A REVIEW. *EPILEPSY BEHAV.* 2017 MAY;70(Pt B):341-348.
46. PACHER P, BÁTKAI S, KUNOS G. CARDIOVASCULAR PHARMACOLOGY OF CANNABINOIDS. *HANDB EXP PHARMACOL.* 2005;(168):599-625.
47. PACHER P, MECHOULAM R. 2011. IS LIPID SIGNALING THROUGH CANNABINOID 2 RECEPTORS PART OF A PROTECTIVE SYSTEM? *PRO LIPID RES.* 50(2): 193-211.
48. PACHER P, STEFFENS S, HASKÓ G, SCHINDLER TH, KUNOS G. CARDIOVASCULAR EFFECTS OF MARIJUANA AND SYNTHETIC CANNABINOIDS: THE GOOD, THE BAD, AND THE UGLY. *NAT REV CARDIOL* 2017;14.
49. PANIKASHVILI D, SHEIN NA, MECHOULAM R, TREMBOVLER V, KOHEN R, ALEXANDROVICH A, SHOHAMIE. 2006. *NEUROBIOLOGY OF DISEASE.* 22: 257-264.
50. PEREZ-REYES M. PHARMACODYNAMICS OF CERTAIN DRUGS OF ABUSE. IN: BARNETT G, CHIANG CN (EDS) *PHARMACOKINETICS AND PHARMACODYNAMICS OF PSYCHOACTIVE DRUGS.* BIOMEDICAL PUBLICATIONS 1985, FOSTER CITY, PP 287-310.
51. PERTWEE RG. PHARMACOLOGY OF CANNABINOID CB1 AND CB2 RECEPTORS. *PHARMACOL THER* 1997; 74:129-180.
52. PISANTI S, MALFITANO AM, CIAGLIA E, LAMBERTI A, RANIERI R, CUOMO G, ABATE M, FAGGIANA G, PROTO MC, FIORE D, LAEZZA C, BIFULCO M. CANNABIDIOL: STATE OF THE ART AND NEW CHALLENGES FOR THERAPEUTIC APPLICATIONS. *PHARMACOL THER.* 2017 JUL;175:133-150.
53. RANDALL MD, HARRIS D, KENDALL DA, RALEVIC V. CARDIOVASCULAR EFFECTS OF CANNABINOIDS. *PHARMACOL THER.* 2002;95:191-202.
54. RHEE MH, VOGEL Z, BARG J, BAYEWITCH M, LEVY R, HANUS L, BREUER A, MECHOULAM R. CANNABINOL DERIVATIVES: BINDING TO CANNABINOID RECEPTORS AND INHIBITION OF ADENYLYLCYCLASE. *J MED CHEM.* 1997;40:3228-33.
55. RUIZ-VALDEPEÑAS L, MARTÍNEZ-ORGADO JA, BENITO C, MILLÁN A, TOLÓN RM, ROMERO J. CANNABIDIOL REDUCES LIPOPOLYSACCHARIDE-INDUCED VASCULAR CHANGES AND INFLAMMATION IN THE MOUSE BRAIN: AN INTRAVITAL MICROSCOPY STUDY. *J NEUROINFLAMMATION* 2011;18;8(1):5.
56. RUSSO EB. CANNABIDIOL CLAIMS AND MISCONCEPTIONS. *TRENDS PHARMACOL SCI.* 2017 MAR;38(3):198-201. EPUB 2017 JAN 12. ERRATUM IN: *TRENDS PHARMACOL SCI.* 2017 MAY;38(5):499.
57. RUSSO EB. CLINICAL ENDOCANNABINOID DEFICIENCY (CECD): CAN THIS CONCEPT EXPLAIN THERAPEUTIC BENEFITS OF CANNABIS IN MIGRAINE, FIBROMYALGIA, IRRITABLE BOWEL SYNDROME AND OTHER TREATMENT-RESISTANT CONDITIONS? *NEURO ENDOCRINOL LETT.* 2004 FEB-APR;25(1-2):31-9.
58. RUSSO EB. TAMING THC: POTENTIAL CANNABIS SYNERGY AND PHYTOCANNABINOID-TERPENOID ENTOURAGE EFFECTS. *BR J PHARMACOL.* 2011 AUG;163(7):1344-64.
59. RUSSO, E.B. CURRENT THERAPEUTIC CANNABIS CONTRO- VERSIES AND CLINICAL TRIAL DESIGN ISSUES. *FRONT. PHARMACOL.* 2016;7: 309.
60. SCHRIEKS IC, RIPKEN D, STAFLEU A, WITKAMP RF, HENDRIKS HF. EFFECTS OF MOOD INDUCTIONS BY MEAL AMBIANCE AND MODERATE ALCOHOL CONSUMPTION ON ENDOCANNABINOIDS AND N-ACYLETHANOLAMINES IN HUMANS: A RANDOMIZED Crossover TRIAL. *PLOS ONE.* 2015 MAY 11;10(5):E0126421.
61. SCHULTZ, S. 2010. CAN AUTISM BE TRIGGERED BY ACETAMINOPHEN ACTIVATION OF THE ENDOCANNABINOID SYSTEM? *NEUROBIOLOGIAE EXPERIMENTALIS.* 70:227-231.
62. SHINJO N, DI MARZO V. THE EFFECT OF CANNABICHROMENE ON ADULT NEURAL STEM/PROGENITOR CELLS. *NEUROCHEMISTRY INTERNATIONAL* 2013;63(5):432-437.
63. STANLEY CP, HIND WH, O'SULLIVAN SE. IS THE CARDIOVASCULAR SYSTEM A THERAPEUTIC TARGET FOR CANNABIDIOL? *BR J CLIN PHARMACOL.* 2013;75(2):313-22.
64. SYLANTYEVA S, JENSEN TP, ROSS RA, RUSAKOV DA. CANNABINOID- AND LYSOPHOSPHATIDYLINOSITOL-SENSITIVE RECEPTOR GPR55 BOOSTS NEUROTRANSMITTER RELEASE AT CENTRAL SYNAPSES. 2013. *PROC NATL ACAD SCI U S A.* 110(13):5193-8.
65. TAKEDA S, MISAWA K, YAMAMOTO I, WATANABE K. CANNABIDIOLIC ACID AS A SELECTIVE CYCLOOXYGENASE-2 INHIBITORY COMPONENT IN CANNABIS. *DRUG METABOLISM AND DISPOSITION* 2008; 36 (9):1917-192.
66. TAKEDA S, MISAWA K, YAMAMOTO I, WATANABE K. CANNABIDIOLIC ACID AS A SELECTIVE CYCLOOXYGENASE-2 INHIBITORY COMPONENT IN CANNABIS. *DRUG METABOLISM AND DISPOSITION* 2008; 36 (9): 1917-1921.
67. TAKEDA S, OKAJIMA S, MIYOSHI H, YOSHIDA K, OKAMOTO Y, OKADA T, AMAMOTO T, WATANABE K, OMIECINSKI CJ, ARAMAKI H. CANNABIDIOLIC ACID, A MAJOR CANNABINOID IN FIBER-TYPE CANNABIS, IS AN

INHIBITOR OF MDA-MB-231 BREAST CANCER CELL MIGRATION. TOXICOL LETT 2012; 214(3): 314-319.

68. TODD A. R. HASHISH. EXPERIENTIA 1946; 2: 55-60.

69. TURNER SE, WILLIAMS CM, IVERSEN L, WHALLEY BJ. MOLECULAR PHARMACOLOGY OF PHYTOCANNABINOIDS. PROG CHEM ORG NAT PROD. 2017;103:61-101. DOI: 10.1007/978-3-319-45541-9_3. REVIEW.

70. VINALS X, MORENO E, LANFUMEY L, CORDOMI A, PASTOR A, DE LA TORRE R, GASPERINI P, NAVARRO G, HOWELL LA, PARDO L, LLUIS C, CANELA EI, MCCORMICK PJ, MALDONADO R, ROBLEDO P. 2015. COGNITIVE IMPAIRMENT INDUCED BY DELTA9-TETRAHYDROCANNABINOL OCCURS THROUGH HETEROMERS BETWEEN CANNABINOID CB1 AND SEROTONIN 5-HT2A RECEPTORS. PLOS BIOLOGY. [HTTP://DX.DOI.ORG/10.1371/JOURNAL.PBIO.1002194](http://dx.doi.org/10.1371/JOURNAL.PBIO.1002194)

71. WANG W, SUN D, PAN B, ROBERTS CJ, SUN X, HILLARD CJ, LIU QS. DEFICIENCY IN ENDOCANNABINOID SIGNALING IN THE NUCLEUS ACCUMBENS INDUCED BY CHRONIC UNPREDICTABLE STRESS. NEUROPSYCHOPHARMACOLOGY. 2010 OCT;35(11):2249-61.

72. WHEAL AJ, CIPRIANO M, FOWLER CJ, RANDALL MD, O'SULLIVAN SE. CANNABIDIOL IMPROVES VASORELAXATION IN ZUCKER DIABETIC FATTY RATS THROUGH CYCLOOXYGENASE ACTIVATION. J PHARMACOL EXP THER 2014;351(2):457-66.

73. Y DAVID L., DEWITT. COX-2-SELECTIVE INHIBITORS: THE NEW SUPER ASPIRINS. MOLECULAR PHARMACOLOGY 1999; 55 (4): 625-631.

74. YOSHIDA H, USAMI N, OHISHI Y, WATANABE K, YAMAMOTO I, YOSHIMURA H. SYNTHESIS AND PHARMACOLOGICAL EFFECTS IN MICE OF HALOGENATED CANNABINOL DERIVATIVES. CHEMICAL & PHARMACEUTICAL BULLETIN 1995; 43(2),335-7.

75. YOUNTS TJ, CASTILLO PE. ENDOGENOUS CANNABINOID SIGNALING AT INHIBITORY INTERNEURONS. CURR OPIN NEUROBIOL. 2014 JUN;26:42-50.

76. ZYGMUNT PM, ANDERSSON DA, HOGESTATT ED. 9-TETRAHYDROCANNABINOL AND CANNABINOL ACTIVATE CAPSAICIN-SENSITIVE SENSORY NERVES VIA A CB1 AND CB2 CANNABINOID RECEPTOR-INDEPENDENT MECHANISM. THE JOURNAL OF NEUROSCIENCE, 2002,22:4720-4727.