



15 KMETIJSTVO IN RIBIŠTVO  
AGRICULTURE AND FISHING

št./No 1

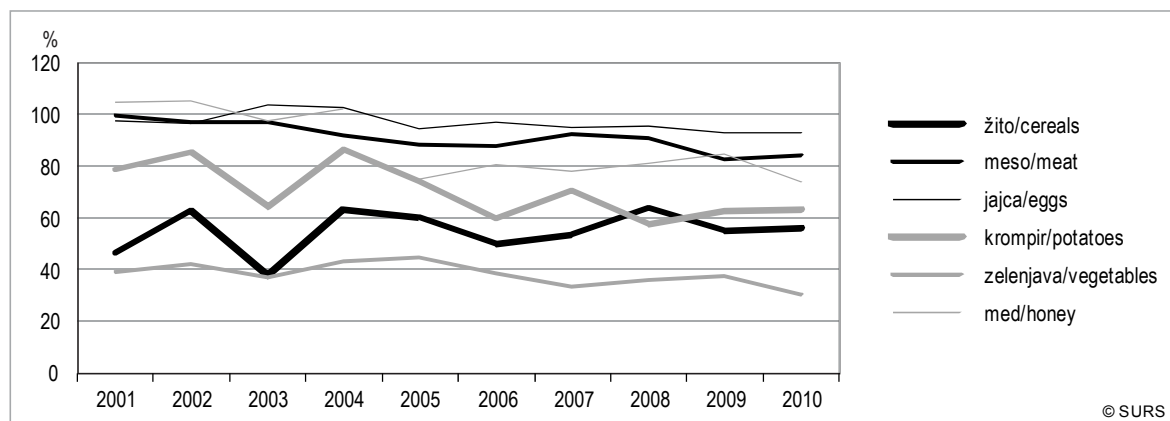
BILANCE PROIZVODNJE IN POTROŠNJE KMETIJSKIH PROIZVODOV, SLOVENIJA, 2010 – končni podatki

SUPPLY BALANCE SHEETS OF AGRICULTURAL PRODUCTS, SLOVENIA, 2010 – final data

- ▶ Stopnja samooskrbe v Sloveniji je za živalske proizvode precej višja kot za rastlinske proizvode. Posebno nizko stopnjo samooskrbe sta v obdobju med 2001 in 2010 izkazovali bilanci zelenjave (31 % leta 2010) in žit (56 % leta 2010). Nad 80 % je v povprečju znašala stopnja samooskrbe v bilancah mesa in jajc.
- ▶ Zaradi sorazmerno stabilne prireje in domače potrošnje mesa je stopnja samooskrbe v bilanci mesa ostajala visoka (okrog 90 %). V letu 2010 se je kljub vsemu nekoliko zmanjšala (84 %).
- ▶ Samooskrba s krompirjem je po letu 2004 začela padati, in sicer zaradi precej zmanjšane pridelave. Leta 2010 je znašala 63 %. Stabilnejša je bila stopnja samooskrbe z jajci (med 93 % in 104 %).
- ▶ Končno bilanco za vino za tržno leto 2009/10 prvič objavljamo po novi razdelitvi kakovostnih razredov vina.
- ▶ Za Slovenijo je značilna prevladujoča proizvodnja belih vin. V tržnem letu 2009/10, za katero je bila bilanca izdelana na osnovi novih kakovostnih razredov vin, je njihov delež znašal 63 % vse proizvodnje, stopnja samooskrbe z vinom pa je preseгла 100 %.
- ▶ Analiza podatkov o potrošnji za prehrano na prebivalca je pokazala, da se je v zadnjem letu zelo povečala potrošnja žita, predvsem pšenice, pa tudi prašičjega mesa ter riža, zmanjšala pa se je potrošnja zelenjave, tudi krompirja in sladkorja.
- ▶ V Sloveniji smo leta 2010 potrošili na prebivalca povprečno 121 kg žit (od tega 100 kg pšenice), 94 kg mesa (od tega največ, 42 kg, prašičjega ter 20 kg govejega mesa), 70 kg krompirja in 90 kg zelenjave. V enem letu je vsak prebivalec potrošil povprečno še 36 kg sladkorja in 10 kg jajc ter popil skoraj 38 litrov vina.
- ▶ The self-sufficiency rate in Slovenia is much higher for animal products than for crop products. Especially low rates of self-sufficiency during the 2001-2010 period were observed for supply balance sheets for vegetables (31% in 2010) and cereals (56% in 2010). On average the rate of self-sufficiency in the balance sheets for meat and eggs was over 80%.
- ▶ Due to the relatively stable indigenous production and domestic use of meat, the rate of self-sufficiency in the balance sheet of meat remained high (around 90%). In 2010, however, it fell slightly (84%).
- ▶ Self-sufficiency in potatoes started to decrease after 2004 due to significantly reduced production. In 2010 it amounted to 63%. More stable was the rate of self-sufficiency in eggs (between 93% and 104%).
- ▶ The final supply balance sheet for wine for the market year 2009/10 is published for the first time.
- ▶ In Slovenia, the prevailed production of white wines is characteristic. In the market year 2009/10 its share reached 63% of the total wine production; the rate of self-sufficiency exceeded 100% in this market year.
- ▶ The analysis of data on human consumption per capita showed that in the last year (2010) the consumption of cereals (especially wheat), pig meat and rice increased, while the consumption of vegetables, potatoes and sugar decreased.
- ▶ In 2010 an average Slovene consumed 121 kg of cereals (of which 100 kg of wheat), 94 kg of meat (mostly, 42 kg of pork and 20 kg of beef), 70 kg of potatoes and 90 kg of vegetables. In one year he or she also consumed 36 kg of sugar, 10 kg of eggs and drank almost 38 litres of wine.

Grafikon 1: Stopnja samooskrbe po vrstah kmetijskih proizvodov, Slovenija

Chart 1: Self-sufficiency rate by type of agricultural products, Slovenia



**BILANCE PROIZVODNJE IN POTROŠNJE KMETIJSKIH PROIZVODOV****SUPPLY BALANCE SHEETS OF AGRICULTURAL PRODUCTS****Namen bilanc je spremljanje tržnih gibanj**

Bilance proizvodnje in potrošnje kmetijskih proizvodov so za določeno časovno obdobje standardizirane informacije o ponudbi in o povpraševanju za določen kmetijski pridelek ali skupino pridelkov in se nanašajo na državo kot celoto. Z njimi primerjamo razpoložljivi proizvod ali skupino proizvodov s porabljenimi na določenem območju v določenem referenčnem obdobju. Z njimi spremljamo tržna gibanja, strukturo in razvoj posameznih trgov kmetijskih proizvodov, predstavljajo pa tudi podatkovno osnovo za izdelavo ekonomskih računov za kmetijstvo ter izračun uteži za spremljanje gibanja cen v kmetijstvu. V EU so bilance pomembna informacijska podlaga pri urejanju posameznih kmetijskih trgov in zagotavljajo informacije za oblikovanje agrarnopolitičnih odločitev.

**Določitev dveh prioritarnih sklopov bilanc**

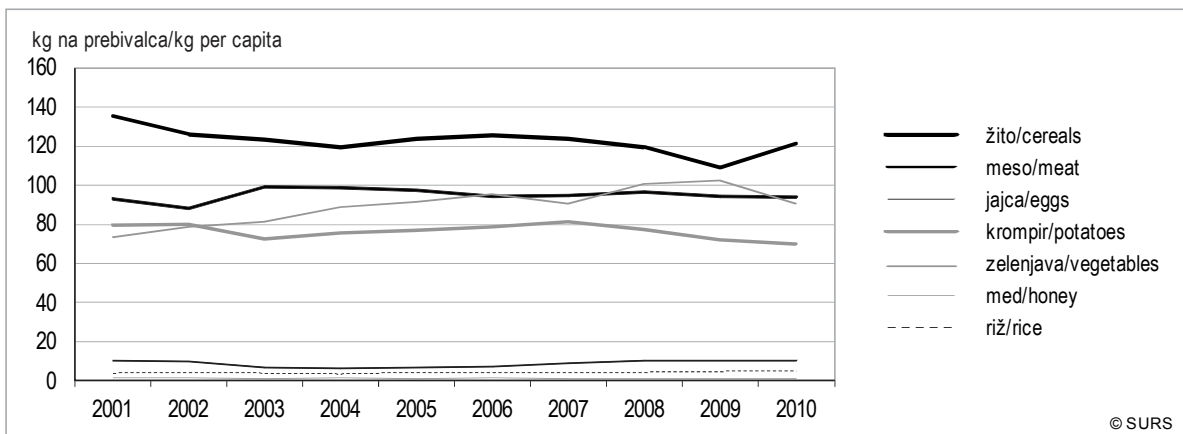
S podpisom dogovora med MKGP in SURS o sodelovanju na področju izdelave bilanc rastlinskih proizvodov in bilanc za živilorejo je bil kot izvajalec bilanc določen Kmetijski inštitut Slovenije (KIS); ta je z letom 2007 v celoti prevzel izdelavo bilanc, določena pa sta bila tudi dva prioritarna sklopa bilanc, ki se že izdelujejo ali pa se še bodo začele izdelovati v Sloveniji za domače potrebe. V prvi prioritarni sklop so bile uvrščene bilance žit, krompirja, sladkorne pese, sladkorja, medu, zelenjave, mesa, jajc, mlečnih izdelkov, riža in vina. Večina teh se že pripravlja. V drugi prioritarni sklop bodo uvrščene bilance rastlinskih maščob (iz oljne repice), oljnih semen in beljakovinskih izdelkov, posameznih vrst krompirja, suhih stročnic, posameznih vrst zelenjave in sadja, oliv ter pripravljenih maščob in olj. Te bilance naj bi se začele pripravljati v prihodnosti.

**Dostop do podatkov o bilancah**

Podatki o bilancah od leta 2000 so na voljo na spletnih straneh SURS. Dvakrat letno se objavljajo bilance - začasne in končne koledarske ter tržne bilance - glede na referenčno obdobje, na katero se nanašajo. Na spletnih straneh SURS so objavljene posamezne bilance za obdobje 2000–2010. Vse prikazane bilance so izdelane za koledarsko leto, razen bilance za vino, ki je izdelana za proizvodno (tržno) leto in se za koledarsko leto ne izdeluje.

**Grafikon 2: Potrošnja kmetijskih proizvodov na prebivalca, Slovenija**

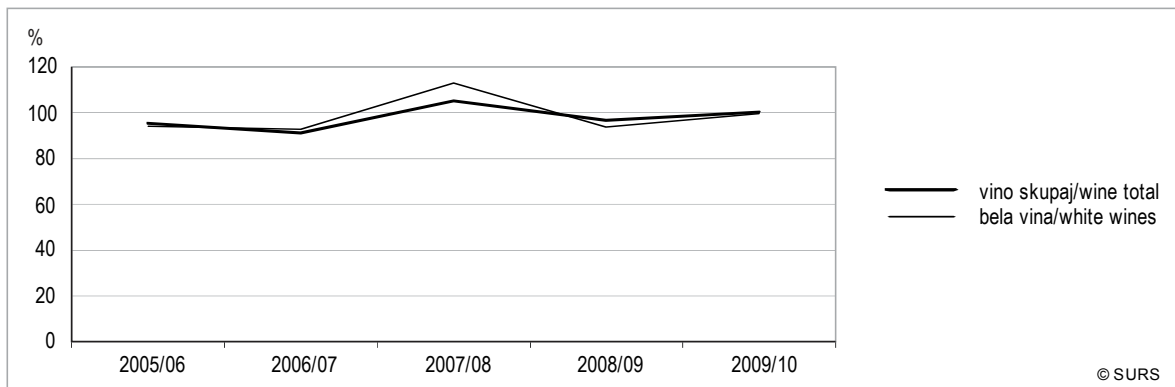
Chart 2: Consumption of agricultural products per capita, Slovenia



Vir/Source: SURS/SORS

**Grafikon 3: Stopnja samooskrbe v bilanci za vino, Slovenija**

Chart 3: Self-sufficiency rate in the balance sheet for wine, Slovenia



Vir/Source: SURS/SORS

**Stopnja samooskrbe precej stabilna**

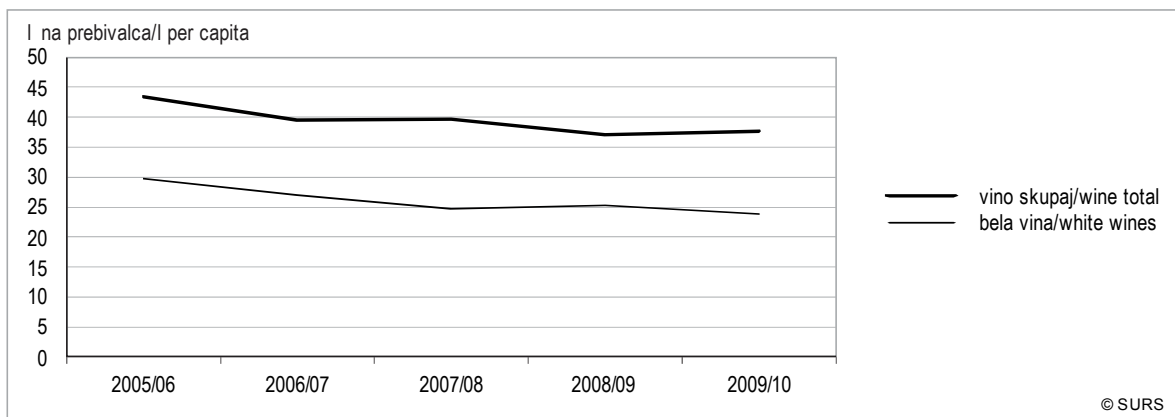
V obdobju, za katerega so bile izdelane tržne bilance za vino, tj. od 2005/06 dalje, je bila stopnja samooskrbe precej stabilna in je presegala 90 %, v 2009/10 je celo rahlo presegla 100 %. V celotnem opazovanem obdobju je potrošnja vina na prebivalca upadala; v tržnem letu 2009/10 je prebivalec Slovenije popil povprečno skoraj 38 litrov vina, od tega 24 litrov belih vin (leto poprej 37 litrov vina, od tega 26 litrov belih vin).

**The self-sufficiency rate was fairly stable**

During the period for which the market supply balance sheets for wine have been compiled, the self-sufficiency rate was fairly stable and exceeded 90%. In 2009/10 it slightly exceeded 100%. Throughout this period, wine consumption per capita was falling; in the 2009/10 market year the average Slovene drank almost 38 litres of wine, of which 24 litres of white wines (in the previous year 37 litres of wine, of which 26 litres of white wines).

**Grafikon 4: Potrošnja vina na prebivalca, Slovenija**

Chart 4: Consumption of wine per capita, Slovenia



Vir/Source: SURS/SORS

## BILANCA PROIZVODNJE IN POTROŠNJE ZA ŽITA

## SUPPLY BALANCE SHEET FOR CEREALS

Tabela 1: Bilanca proizvodnje in potrošnje za žita, Slovenija

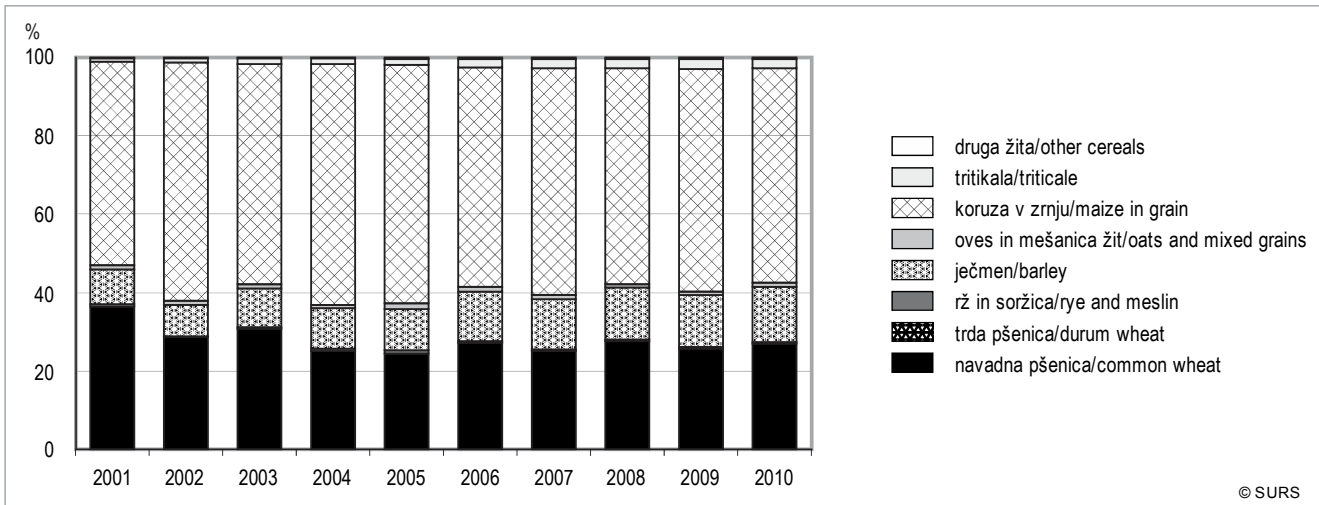
Table 1: Supply balance sheet for cereals, Slovenia

	2001	2002	2003	2004	2005	2006	2007	2008	2009	2010	
1.000 t											
<b>Pridelano</b>	<b>496,0</b>	<b>610,7</b>	<b>398,8</b>	<b>583,2</b>	<b>576,3</b>	<b>493,6</b>	<b>531,9</b>	<b>579,6</b>	<b>532,9</b>	<b>568,9</b>	<b>Production</b>
od tega pšenica skupaj	181,1	174,9	122,9	146,8	141,3	134,5	133,3	160,3	136,9	153,5	of which total wheat
od tega žita brez pšenice	314,9	435,9	275,8	436,3	435,0	359,1	398,6	419,3	395,9	415,4	of which cereals other than wheat
<b>Domača potrošnja</b>	<b>1.076,4</b>	<b>972,1</b>	<b>1.060,1</b>	<b>922,0</b>	<b>960,0</b>	<b>986,2</b>	<b>992,8</b>	<b>912,3</b>	<b>968,4</b>	<b>1.020,0</b>	<b>Domestic use</b>
od tega pšenica skupaj	312,1	276,8	260,1	273,7	294,1	305,7	286,0	290,8	288,7	309,9	of which total wheat
od tega žita brez pšenice	764,3	695,4	800,0	648,4	665,9	680,5	706,7	621,5	679,6	710,1	of which cereals other than wheat
<b>Domača potrošnja za prehrano</b>	<b>269,3</b>	<b>251,9</b>	<b>246,8</b>	<b>238,5</b>	<b>248,1</b>	<b>252,1</b>	<b>250,3</b>	<b>241,2</b>	<b>222,1</b>	<b>248,1</b>	<b>Human consumption</b>
od tega pšenica skupaj	221,1	206,3	199,7	193,9	200,3	204,5	197,0	191,2	175,7	205,8	of which total wheat
od tega žita brez pšenice	48,2	45,7	47,1	44,6	47,9	47,5	53,3	50,0	46,4	42,3	of which cereals other than wheat
%											
<b>Delež potrošnje za prehrano od celotne potrošnje</b>	<b>25,0</b>	<b>25,9</b>	<b>23,3</b>	<b>25,9</b>	<b>25,8</b>	<b>25,6</b>	<b>25,2</b>	<b>26,4</b>	<b>22,9</b>	<b>24,3</b>	<b>Share of human consumption of total domestic use</b>
od tega pšenica skupaj	70,8	74,5	76,8	70,9	68,1	66,9	68,9	65,8	60,8	66,4	of which total wheat
od tega žita brez pšenice	6,3	6,6	5,9	6,9	7,2	7,0	7,5	8,0	6,8	6,0	of which cereals other than wheat
%											
<b>Stopnja samooskrbe</b>	<b>46,1</b>	<b>62,8</b>	<b>37,6</b>	<b>63,3</b>	<b>60,0</b>	<b>50,0</b>	<b>53,6</b>	<b>63,5</b>	<b>55,0</b>	<b>55,8</b>	<b>Self-sufficiency rate</b>
od tega pšenica skupaj	58,0	63,2	47,3	53,7	48,0	44,0	46,6	55,1	47,4	49,5	of which total wheat
od tega žita brez pšenice	41,2	62,7	34,5	67,3	65,3	52,8	56,4	67,5	58,3	58,5	of which cereals other than wheat
kg na prebivalca / kg per capita											
<b>Potrošnja na prebivalca</b>	<b>135,2</b>	<b>126,2</b>	<b>123,6</b>	<b>119,4</b>	<b>124,0</b>	<b>125,5</b>	<b>124,0</b>	<b>119,2</b>	<b>108,7</b>	<b>121,1</b>	<b>Consumption per capita</b>
od tega pšenica skupaj	111,0	103,4	100,0	97,1	100,1	101,8	97,6	94,5	86,0	100,4	of which total wheat
od tega žita brez pšenice	24,2	22,9	23,6	22,3	23,9	23,7	26,4	24,7	22,7	20,6	of which cereals other than wheat
Število prebivalcev na dan 30. 6.	1.992.035	1.995.718	1.996.773	1.997.004	2.001.114	2.008.516	2.019.406	2.022.629	2.042.335	2.049.261	Number of population on 30 June

Vir/Source: SURS/SORS

**Grafikon 5: Domača pridelava žit po vrstah žit, Slovenija**

Chart 5: Production of cereals by type of cereals, Slovenia



Vir/Source: SURS/SORS

**V letih 2001–2010 je pridelava žit v Sloveniji nihala**

Pridelava žit v Sloveniji je v obdobju med 2001 in 2010 precej nihala. Največje količine žit so bile pridelane v letih 2002, 2005, 2008 ter 2010, in sicer se je takrat skupna pridelava gibala okrog 600.000 ton. V vmesnih letih je bila pridelava žit manjša. Delež pridelka pšenice med vsemi žiti se je v opazovanem obdobju zniževal; od leta 2004 je predstavljal približno četrtino celotne pridelave; v letu 2010 je znašal 27 %. Sorazmerno z zmanjševanjem deleža pridelane pšenice se je delež pridelka drugih žit povečeval in je v celotnem opazovanem obdobju obsegal okrog 70 % pridelave žit.

Od žit pridelamo v Sloveniji največ koruze v zrnju in navadne pšenice. Koruze v zrnju smo v letu 2010 pridelali 311.000 ton, kar je bilo skoraj 55 % celotne pridelave žit, navadne pšenice pa 153.000 ton. Po količini pridelka sta sledila ječmen in tritikala. Pridelava posameznih vrst žit je v opazovanem obdobju nihala, in sicer približno tako kot skupna pridelava žit. Od 2001 do 2010 se je najbolj povečala pridelava tritikale in tudi ječmena.

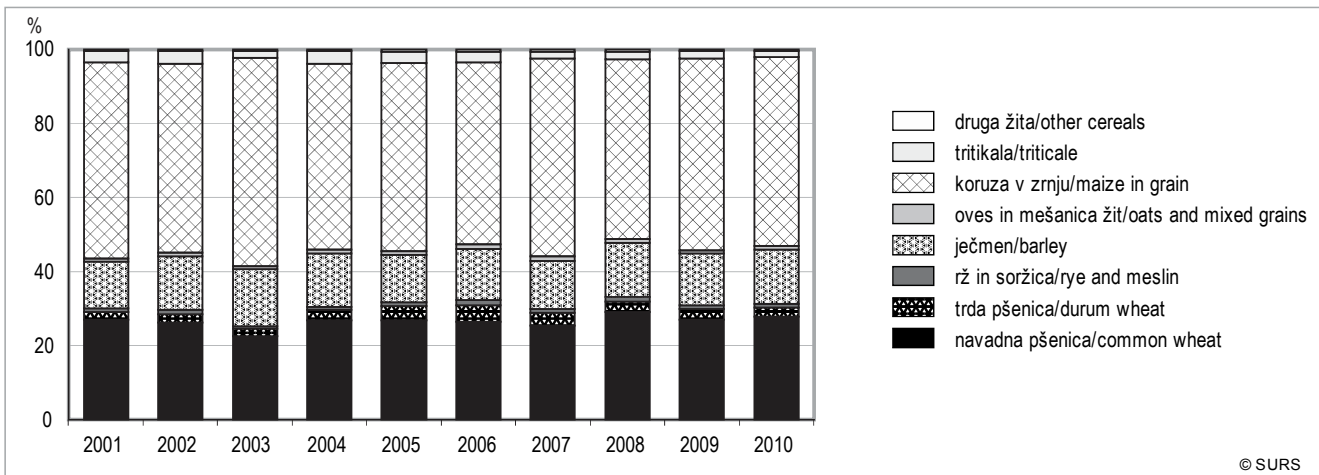
**In 2001-2010 domestic cereal production varied considerably**

Production of cereals varied considerably in Slovenia in the 2001-2010 period. The highest amounts of harvested cereals were recorded in 2002, 2005, 2008 and 2010, when the total production amounted to around 600,000 tonnes. In the years between, the production of cereals was lower. The share of the harvested wheat in the total production of cereals has declined. Since 2004 wheat has represented about a quarter of total production. The share of wheat in 2010 was 27%. The share of other cereals increased over the period in proportion with the movement of the wheat production and it amounted to about 70% of the total production.

Slovenia produces the most maize for grain and common wheat. In 2010, maize production amounted to 311,000 tonnes, which is almost 55% of total cereal production, and common wheat production to 153,000 tonnes. According to the yield, barley and triticale followed. Production of the individual types of cereals varied similarly to the total production of cereals during the period. Between 2001 and 2010, the production of triticale and barley increased the most.

**Grafikon 6: Domača potrošnja žit po vrstah žit, Slovenija**

Chart 6: Domestic use of cereals by type of cereals, Slovenia



Vir/Source: SURS/SORS

### Domača potrošnja žit večja od domače pridelave žit

Domača potrošnja žit je v vsem obdobju močno presežala domačo pridelavo žit. Največjo domačo potrošnjo smo zabeležili v letih 2001, 2003, 2007 in 2010; potrošili pa smo največ koruze v zrnju, navadne pšenice in ječmena. Koruze v zrnju smo leta 2010 potrošili skoraj 520.000 ton; to je predstavljalo 51 % celotne domače potrošnje žit. Potrošnja navadne pšenice se je v celotnem opazovanem obdobju gibala okrog 260.000 ton, in to je predstavljalo okrog četrtino skupne potrošnje žit. Leta 2010 je potrošnja navadne pšenice znašala več kot 280.000 ton, delež od skupne potrošnje žit se je nekoliko povečal (28 %). Po količini potrošnje so sledile še trda pšenica, tritikala in rž ter soržica. Delež potrošnje pšenice od skupne potrošnje se je med letoma 2001 in 2010 gibal med 25 % in 30 %, delež potrošnje drugih žit pa okrog 70 %.

Delež potrošnje žit za prehrano je med letoma 2001 in 2010 nihal, v letu 2010 se je v primerjavi s predhodnim letom nekoliko povečal; v povprečju je v opazovanem obdobju predstavljal 25 % celotne potrošnje, to je približno 250.000 ton. Veliko večino za hrano potrošenih žit je predstavljala pšenica, okrog 70 %, preostali del, približno 50.000 ton, pa so predstavljala druga žita. Količina porabljene navadne pšenice za prehrano je v zadnjih letih nekoliko padla, leta 2010 pa se je zopet nekoliko povečala (180.000 ton). Povečala se je tudi količina za prehrano potrošene trde pšenice (leta 2010 nekoliko več kot 25.000 ton), medtem ko se je količina za prehrano potrošene koruze v zrnju leta 2010 nekoliko zmanjšala (nekoliko več kot 27.000 ton). Večina potrošene navadne in trde pšenice, rži in soržice ter drugih žit (ajda, proso) se je porabila za prehranske namene.

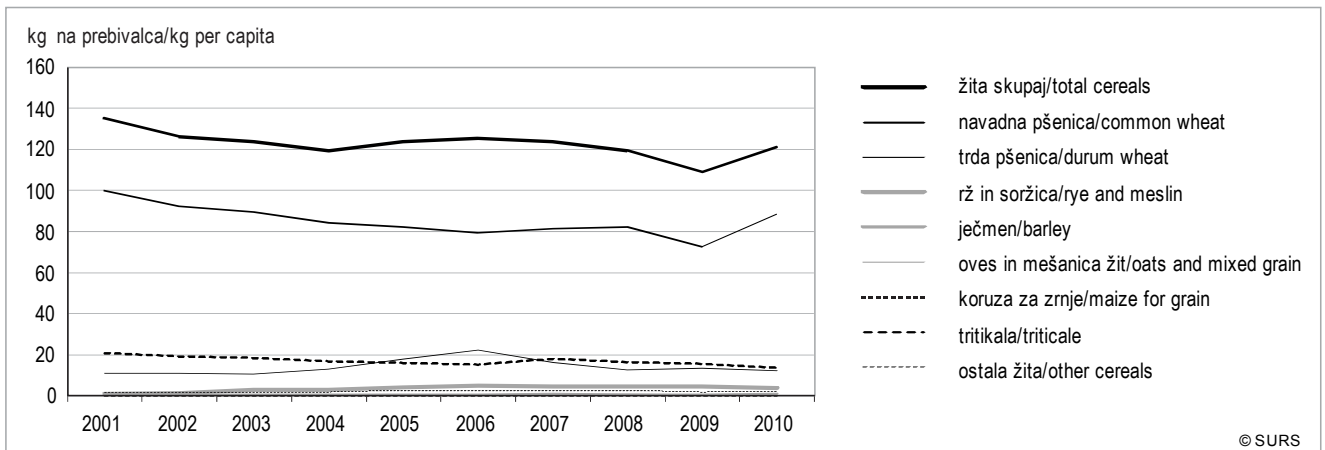
### Domestic use of cereals exceeded domestic production

In the whole period the domestic use exceeded the domestic production. The highest domestic use was recorded in 2001, 2003, 2007 and 2010. In Slovenia, the most maize for grain, common wheat and barley have been used. The quantity of the consumed maize for grain amounted to almost 520,000 tons in 2010, accounting for 51% of the total domestic use. Throughout the period, the consumption of wheat was around 260,000 tonnes, representing around a quarter of total domestic use. In 2010, the consumption of common wheat amounted to more than 280,000 tonnes, its share in the total consumption of cereals slightly increased (28%). Durum wheat, triticale and rye and meslin followed in terms of the quantity. The share of the domestic use of wheat out of the total domestic use ranged between 25% and 30% between 2001 and 2010, while the share of other cereals was about 70%.

The share of human consumption of cereals varied between 2001 and 2010; in 2010 it slightly increased in comparison with the previous year. On average over the observed period, the share of human consumption accounted to 25% of the total domestic use, which was about 250,000 tonnes. The vast majority of the human consumption of cereals was represented by wheat, which accounted for about 70%; the rest, approximately 50,000 tonnes, was represented by other cereals. The amount of human consumption of wheat fell slightly in recent years, but in 2010 it increased again (180,000 tonnes). The human consumption of durum wheat also increased (more than 25,000 tonnes in 2010), while the consumption of maize for grain decreased slightly in 2010 (more than 27,000 tonnes). Most of the consumed wheat and durum wheat, rye, meslin and other cereals (buckwheat, millet) was used for human consumption.

### Grafikon 7: Potrošnja žit na prebivalca, Slovenija

Chart 7: Consumption of cereals per capita, Slovenia



Vir/Source: SURS/SORS

### Potrošnja žit na prebivalca se je v letu 2010 ponovno povečala

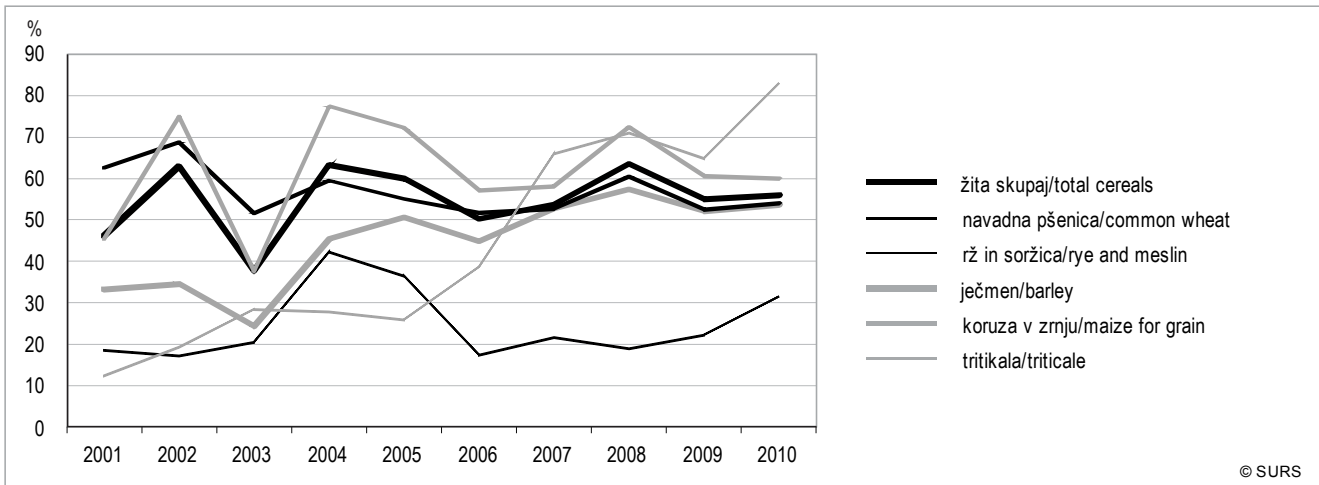
Potrošnja žit na prebivalca je od leta 2001 do 2010 padla, tako je od leta 2001, ko je znašala 135 kg, do leta 2010 padla na potrošenih nekaj več kot 121 kg. Od tega je prebivalec Slovenije porabil povprečno največ pšenice; leta 2010 je porabil več kot 88 kg navadne pšenice, 13 kg koruze za zrnje, 12 kg trde pšenice, skoraj 4 kg rži in soržice ter 2 kg ostalih žit (ajda, proso). Potrošnja posameznih vrst žit na prebivalca je v opazovanem obdobju upadala podobno kot skupna potrošnja žit na prebivalca. Potrošnja pšenice na prebivalca je v vsem obdobju predstavljala okrog tri četrtine celotne potrošnje žit.

### Consumption of cereals per capita increased again in 2010

Consumption of cereals per capita dropped from 135 kg in 2001 to a little over 121 kg in 2010. Out of these, the average citizen in Slovenia consumed in 2010 more than 88 kg of common wheat, 13 kg of maize for grain, 12 kg of durum wheat, almost 4 kg of rye and meslin and 2 kg of other cereals (buckwheat, millet). Consumption of certain types of cereals per capita fell during the observed period similarly to the total consumption of cereals per capita. Consumption of wheat per capita represented around three quarters of total consumption.

**Grafikon 8: Stopnja samooskrbe v bilanci za žita, Slovenija**

Chart 8: Self-sufficiency rate in the supply balance sheet for cereals, Slovenia



Vir/Source: SURS/SORS

**Za prehrano potrošimo le četrtno celotne domače potrošnje žit**

V obdobju med letoma 2001 in 2010 je proizvodnja žit v Sloveniji rahlo nihala. Leta 2010 je dosegla približno 570.000 ton. Stopnja samooskrbe je v primerjavi s predhodnim letom zaradi večje pridelave žit in povečane domače potrošnje (1.020.000 ton) ostala na primerljivi ravni. Kljub temu, da je znašala 56 %, je stopnja še vedno precej nizka, v primerjavi z letom 2008 se je znižala za več kot 12 odstotnih točk. Delež domače potrošnje žit za prehrano je v celotnem obdobju predstavljal približno četrtno celotne domače potrošnje žit.

**Stopnja samooskrbe najnižja za rž in soržico**

Najnižjo stopnjo samooskrbe sta med posameznimi vrstami žit v obdobju 2001–2010 izkazovali rž in soržica. Sicer je ta stopnja zelo nihala, v odvisnosti od nihanj v domači potrošnji. Leta 2010 je stopnja samooskrbe z ržo in soržico znašala 31 %. Najvišjo stopnjo samooskrbe je v letu 2010 izkazovala tritikala, skoraj 83 %; stopnja samooskrbe je pri tej vrsti žita v celotnem opazovanem obdobju tudi najhitreje naraščala. Stopnja samooskrbe pri navadni pšenici, ječmenu, ovsu, koruzi za zrnje in ostalih žitih se je leta 2010 gibala okrog 50 %.

**Znižana stopnja samooskrbe za vso pšenico**

Zaradi znižanja stopnje samooskrbe pri navadni pšenici je bila hkrati zabeležena tudi znižana stopnja samooskrbe za vso pšenico, tj. za navadno in trdo pšenico skupaj, saj pridelave trde pšenice pri nas nismo imeli. Skupna stopnja samooskrbe za pšenico je leta 2010 znašala skoraj 50 %, za vsa preostala žita skupaj pa je bila višja, in sicer je znašala 59 %.

**Human consumption of cereals represents only a quarter of total domestic use**

In the 2001-2010 period, the production of cereals slightly varied in Slovenia. In 2010 it reached about 570,000 tonnes. The self-sufficiency rate compared with the previous year stayed at the same level due to the increased cereal production and domestic use (1,020,000 tonnes). Although it was 56%, the rate is still quite low; compared with 2008 it even dropped by more than 12 percentage points. The share of the human consumption of cereals during the whole period represented about a quarter of total domestic use in the whole period.

**The lowest rates of self-sufficiency for rye and meslin**

As regards individual types of cereals, the lowest rate of self-sufficiency was typical for rye and meslin. In the 2001-2010 period, the rate highly varied depending on variations in domestic use. In 2010, the rate of self-sufficiency for rye and meslin amounted to 31%. The highest rate of self-sufficiency, almost 83%, was shown by triticale in 2010, the self-sufficiency rate for this type of cereals was increasing most rapidly throughout the period. The self-sufficiency rate for wheat, barley, oats, maize for grain and other cereals was around 50% in 2010.

**Reduced self-sufficiency rate for the total wheat**

Due to the reduction of the rate of self-sufficiency for common wheat, the reduction of the self-sufficiency rate for the total wheat (common and durum wheat) was also reported, since there was no production of durum wheat in Slovenia. Total self-sufficiency rate for wheat was almost 50% in 2010; for all other cereals it was higher and it amounted to 59%.



Tabela 2: Bilanca proizvodnje in potrošnje za meso, Slovenija

Table 2: Supply balance sheet for meat, Slovenia

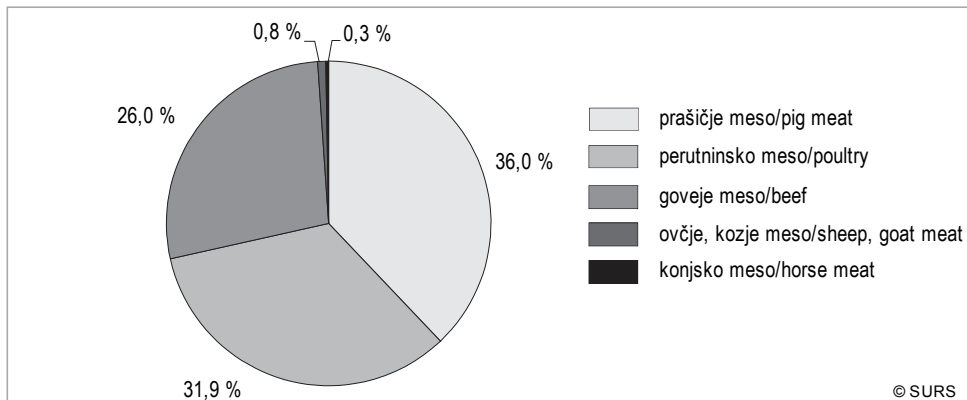
	2001	2002	2003	2004	2005	2006	2007	2008	2009	2010	
<b>1.000 t</b>											
<b>Domača prireja mesa</b>	<b>184,6</b>	<b>170,5</b>	<b>192,6</b>	<b>180,8</b>	<b>172,0</b>	<b>166,7</b>	<b>176,8</b>	<b>177,8</b>	<b>158,9</b>	<b>161,6</b>	<b>Indigenous production</b>
Govedo	48,0	44,7	50,2	45,0	44,1	42,2	43,1	44,5	41,0	43,2	Beef
Prašiči	66,4	61,9	73,3	71,2	61,4	63,2	62,5	61,3	45,4	44,5	Pork
Ovce, koze	1,4	1,5	1,8	1,7	1,9	2,0	2,1	1,9	2,0	2,0	Sheep and goats
Konji	0,5	0,4	0,3	0,4	0,4	0,5	0,6	0,5	0,5	0,6	Horses
Perutnina	58,8	53,1	56,9	53,1	55,4	50,1	59,8	60,9	62,6	63,7	Poultry
<b>Domača potrošnja</b>	<b>185,3</b>	<b>175,6</b>	<b>198,0</b>	<b>196,9</b>	<b>194,7</b>	<b>189,4</b>	<b>191,2</b>	<b>195,5</b>	<b>192,4</b>	<b>192,3</b>	<b>Domestic use</b>
Govedo	40,3	38,2	47,0	46,7	47,2	41,6	42,6	43,2	41,8	40,9	Beef
Prašiči	82,3	79,6	84,7	89,1	88,4	90,8	84,9	87,3	82,8	85,2	Pork
Ovce, koze	1,4	1,5	1,8	1,7	1,9	2,0	2,1	1,9	2,0	2,1	Sheep and goats
Konji	0,7	0,6	0,5	0,4	0,2	0,3	0,4	0,3	0,4	0,4	Horses
Perutnina	51,9	48,1	49,7	46,1	49,3	46,3	52,6	53,9	57,3	57,0	Poultry
<b>Domača potrošnja za prehrano</b>	<b>185,3</b>	<b>175,6</b>	<b>198,0</b>	<b>196,9</b>	<b>194,7</b>	<b>189,4</b>	<b>191,2</b>	<b>195,5</b>	<b>192,4</b>	<b>192,3</b>	<b>Human consumption</b>
Govedo	40,3	38,2	47,0	46,7	47,2	41,6	42,6	43,2	41,8	40,9	Beef
Prašiči	82,3	79,6	84,7	89,1	88,4	90,8	84,9	87,3	82,8	85,2	Pork
Ovce, koze	1,4	1,5	1,8	1,7	1,9	2,0	2,1	1,9	2,0	2,1	Sheep and goats
Konji	0,7	0,6	0,5	0,4	0,2	0,3	0,4	0,3	0,4	0,4	Horses
Perutnina	51,9	48,1	49,7	46,1	49,3	46,3	52,6	53,9	57,3	57,0	Poultry
%											
<b>Delež potrošnje za prehrano od skupne potrošnje</b>	<b>100,0</b>	<b>100,0</b>	<b>100,0</b>	<b>100,0</b>	<b>100,0</b>	<b>100,0</b>	<b>100,0</b>	<b>100,0</b>	<b>100,0</b>	<b>100,0</b>	<b>Share of human consumption of total domestic use</b>
%											
<b>Stopnja samooskrbe</b>	<b>99,6</b>	<b>97,1</b>	<b>97,3</b>	<b>91,9</b>	<b>88,4</b>	<b>88,0</b>	<b>92,5</b>	<b>90,9</b>	<b>82,6</b>	<b>84,0</b>	<b>Self-sufficiency rate</b>
Govedo	119,1	116,9	106,7	96,5	93,4	101,4	101,2	103,0	98,1	105,8	Beef
Prašiči	80,7	77,8	86,5	79,9	69,5	69,6	73,6	70,2	54,8	52,3	Pork
Ovce, koze	100,0	100,0	100,0	100,0	99,5	99,5	98,6	98,5	97,5	98,0	Sheep and goats
Konji	72,5	60,3	69,4	113,5	162,5	162,1	157,1	145,5	145,9	142,1	Horses
Perutnina	113,3	110,4	114,4	115,1	112,4	108,2	113,7	112,9	109,1	111,7	Poultry
<b>kg na prebivalca / kg per capita</b>											
<b>Potrošnja na prebivalca</b>	<b>93,0</b>	<b>88,0</b>	<b>99,2</b>	<b>98,6</b>	<b>97,3</b>	<b>94,3</b>	<b>94,7</b>	<b>96,6</b>	<b>94,2</b>	<b>93,8</b>	<b>Consumption per capita</b>
Govedo	20,2	19,2	23,6	23,4	23,6	20,7	21,1	21,3	20,5	19,9	Beef
Prašiči	41,3	39,9	42,4	44,6	44,2	45,2	42,1	43,2	40,5	41,6	Pork
Ovce, koze	0,7	0,8	0,9	0,9	1,0	1,0	1,1	1,0	1,0	1,0	Sheep and goats
Konji	0,3	0,3	0,2	0,2	0,1	0,1	0,2	0,2	0,2	0,2	Horses
Perutnina	26,1	24,1	24,9	23,1	24,7	23,0	26,1	26,7	28,1	27,8	Poultry
Število prebivalcev na dan 30. 6.	1.992.035	1.995.718	1.996.773	1.997.004	2.001.114	2.008.516	2.019.406	2.022.629	2.042.335	2.049.261	Number of population on 30 June

Vir/Source: SURS/SORS



**Grafikon 9: Domača prirreja mesa po vrstah mesa, Slovenija, 2001**

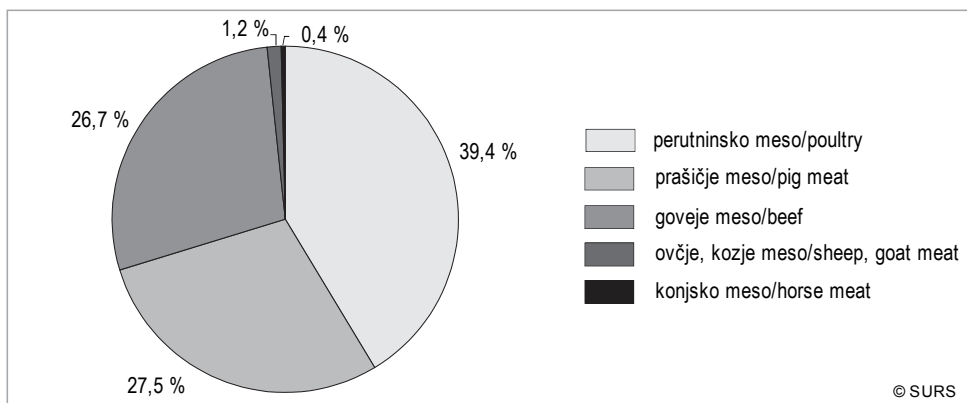
Chart 9: Indigenous production of meat by type of meat, Slovenia, 2001



Vir/Source: SURS/SORS

**Grafikon 10: Domača prirreja mesa po vrstah mesa, Slovenija, 2010**

Chart 10: Indigenous production of meat by type of meat, Slovenia, 2010



Vir/Source: SURS/SORS

#### Pri domači prirreji mesa največ perutnine in prašičev

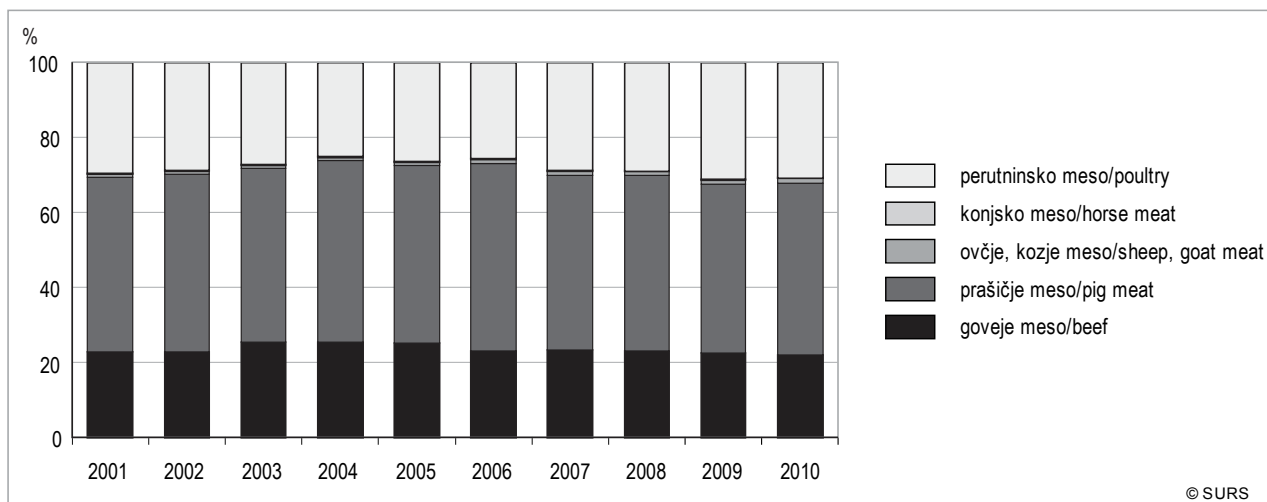
Domača prirreja mesa je v obdobju med 2001 in 2010 rahlo nihala ter znašala okrog 170.000 ton. V letu 2010 se je po predhodnem letu nekoliko povečala, celotna prirreja mesa je znašala 162.000 ton. Več kot dve tretjini celotne prirreje mesa sta predstavljali prirreja perutnine (39 %) in prirreja prašičev (28 %). Od ostalih vrst prirreje je prirreja goveda s 43.000 tonami v letu 2010 predstavljala nadaljnjih 27 % celotne prirreje. Najmanjše prirreje so bile v opazovanem obdobju prirreja ovc in koz ter konjev. Pri vseh vrstah prirreje je bilo opaziti sorazmerno stabilnost v količini med posameznimi leti, nekoliko se je povečala le količinska prirreja perutnine, tudi na račun manjše prirreje prašičev.

#### Poultry and pigs prevailed in indigenous production of meat

Indigenous production of meat varied slightly in the 2001-2010 period and it amounted to about 170,000 tonnes. In 2010 it increased slightly, after the previous year, the total meat production amounted to 162,000 tonnes. Over two-thirds of total meat production accounted for production of poultry (39%) and pigs (28%). As regards other types of production, the cattle production of over 43,000 tonnes accounted for a further 27% of the total production in 2010. During the observed period the lowest was the production of sheep, goats and horses. For all types of production the relative stability in the quantity between years can be seen, there was a slight increase only in poultry production, also at the expense of lower indigenous pig production.

**Grafikon 11: Domača potrošnja mesa po vrstah mesa, Slovenija**

Chart 11: Domestic use of meat by type of meat, Slovenia



© SURS

Vir/Source: SURS/SORS

**Domača potrošnja mesa vpliva na samooskrbo Slovenije**

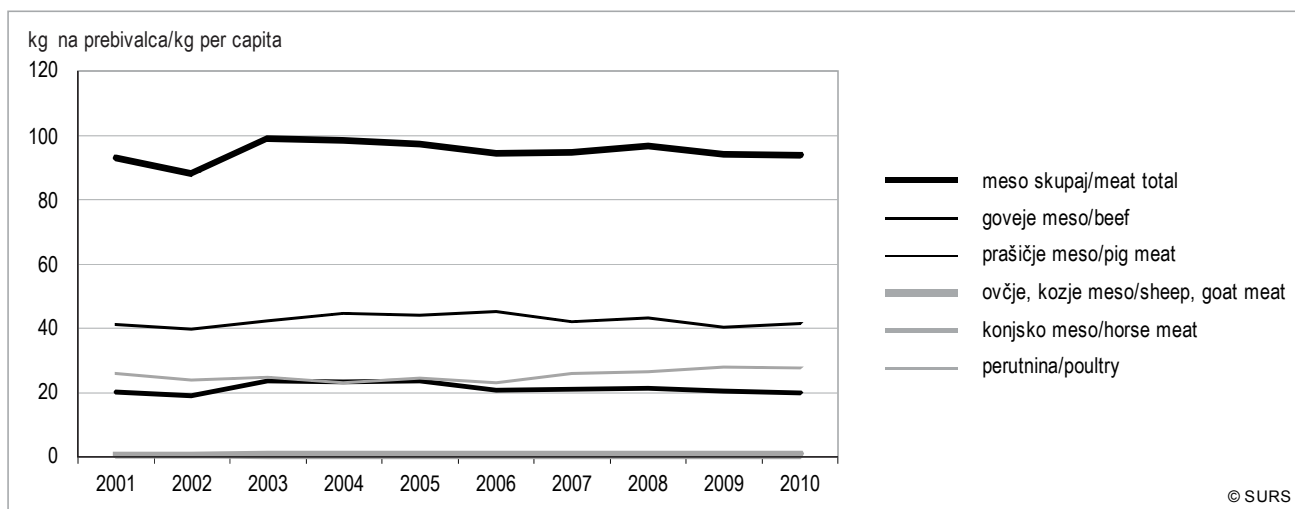
Vsa domača potrošnja mesa je bila namenjena za prehrano. V vsem opazovanem obdobju je presegala domačo prirajo, zato Slovenija z mesom ni bila v celoti samooskrbna. Z deležem nad 40 % ali v povprečju okrog 80.000 ton v celotnem opazovanem obdobju smo v Sloveniji doma potrošili največ prašičjega mesa. Potrošnja perutninskega mesa (okrog 50.000 ton) in govejega mesa skupaj (nad 40.000 ton) je predstavljala več kot polovico skupne domače potrošnje (v letu 2010 skupaj 51 %). Domača potrošnja mesa je bila po posameznih vrstah mesa v obdobju stabilna; najmanjša je bila v tem obdobju potrošnja konjskega mesa (manj kot 1 % od celotne domače potrošnje mesa).

**Domestic use of meat influences the self-sufficiency rate of Slovenia**

All domestic use of meat has been used for human consumption. Throughout the period it exceeded the indigenous production, therefore Slovenia was not fully self-sufficient as regards meat. With a share of over 40% over the whole period we consumed the most of pig meat in Slovenia, which is on average about 80,000 tonnes. Domestic use of poultry (about 50,000 tonnes) and beef (over 40,000 tonnes) together accounted for more than half of the total domestic use (51% in 2010). Domestic use of the individual types of meat was stable throughout the period. In the observed period the lowest was the consumption of horse meat (less than 1% of total domestic use).

**Grafikon 12: Potrošnja mesa na prebivalca, Slovenija**

Chart 12: Consumption of meat per capita, Slovenia



© SURS

Vir/Source: SURS/SORS

**Na leto potrošimo povprečno blizu 100 kg mesa na prebivalca**

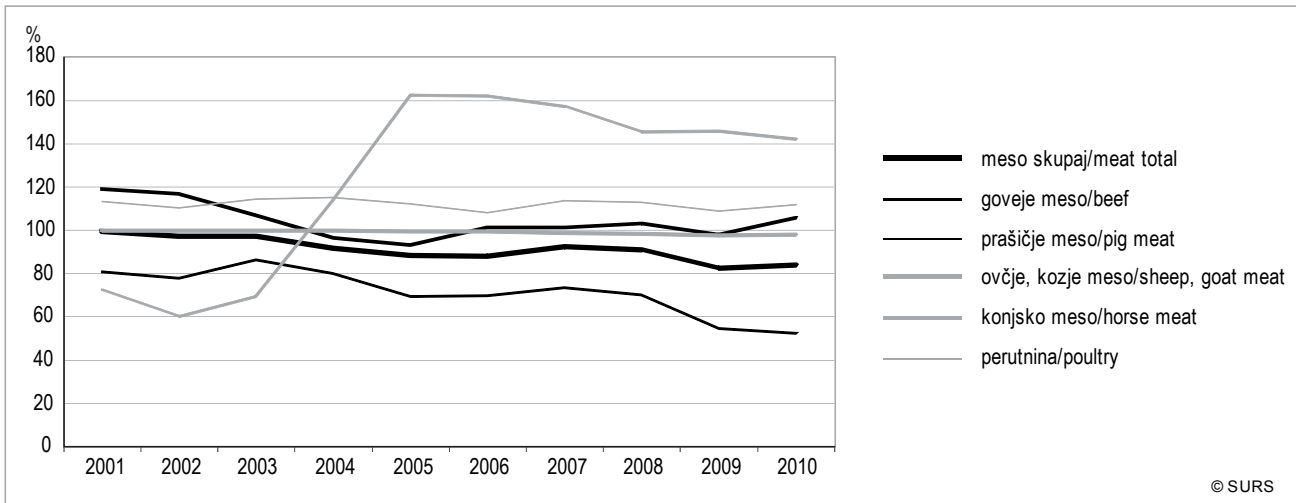
V Sloveniji smo v opazovanem obdobju potrošili v enem letu povprečno nad 90 kg mesa na prebivalca, od tega največ prašičjega mesa, okrog 40 kg; na drugem mestu je bila perutnina; te smo v celotnem obdobju potrošili na leto povprečno okrog 25 kg na prebivalca, leta 2010 pa povprečno 28 kg na prebivalca. Potrošnja prašičjega mesa se je v primerjavi z letom prej v 2010 zopet nekoliko povečala in je znašala 42 kg na prebivalca. Govejega mesa smo leta 2010 potrošili povprečno 20 kg na prebivalca; poraba ovčjega, kozjega in konjskega mesa je bila precej manjša.

**Average annual consumption of meat per capita below 100 kg**

The average resident consumed in one year of the observed period more than 90 kg of meat, mostly pork, about 40 kg. The second largest consumption of meat per capita was typical for poultry meat, which was during the whole period around 25 kg; in 2010 it amounted to 28 kg per capita. The consumption of pig meat per capita increased slightly again in 2010 in comparison with the year before, and it amounted to 42 kg per capita. In addition, the average Slovene consumed 20 kg of beef in 2010, while the consumption of mutton, goat and horse meat per capita was much lower.

**Grafikon 13: Stopnja samooskrbe v bilanci za meso, Slovenija**

Chart 13: Self-sufficiency rate in the supply balance sheet for meat, Slovenia



Vir/Source: SURS/SORS

**Stopnja samooskrbe z mesom stalno visoka**

Letna količina domače prireje mesa se je v celotnem obdobju gibala okrog 170.000 ton, v letu 2010 pa je znašala skoraj 162.000 ton. Tudi domača potrošnja mesa (ta gre v celoti za prehranske namene) je bila v opazovanem obdobju stabilna in je znašala okrog 190.000 ton. Zaradi sorazmerno stabilne prireje mesa in domače potrošnje je stopnja samooskrbe ostajala v opazovanem obdobju visoka, okrog 90-odstotna, v letu 2010 pa je klub temu nekoliko upadla in je znašala 84 %.

**The self-sufficiency rate for meat remained high**

The annual amount of indigenous beef production was around 170,000 tonnes over the whole period; in 2010 it amounted to almost 162,000 tonnes. Domestic use of meat, which is entirely human consumption, has also been stable over the period and it amounted to around 190,000 tonnes. Because of the relatively stable indigenous meat production and domestic use, the self-sufficiency rate has remained high. During the observed period, it was around 90%; in 2010, however, it fell slightly and amounted to 84%.

**Stopnja samooskrbe s prašičjim mesom najnižja**

Stopnja samooskrbe s perutninskim mesom je v celotnem opazovanem obdobju presegala 100 %. Najbolj se je povečevala stopnja samooskrbe s konjskim mesom, in sicer je leta 2004 presegla 100 %, v naslednjih letih pa je močno naraščala in je leta 2010 znašala kar 142 %. V obdobju 2006–2008 je poleg prireje perutninskega in konjskega mesa presegla domače potrebe tudi prireja govejega mesa, in sicer je bila stopnja samooskrbe s tem mesom 103-odstotna v letu 2008. Najnižjo stopnjo samooskrbe je v opazovanem obdobju izkazovala bilanca prašičjega mesa, med 70 % in 85 %, leta 2010 je bila stopnja samooskrbe s tem mesom najnižja, 52-odstotna. V letih 2009 in 2010 je bila Slovenija skoraj v celoti samooskrbna z ovčjim ter kozjim mesom (98 % v 2010).

**Self-sufficiency in pig meat the lowest**

Throughout this period, the rate of self-sufficiency in poultry meat exceeded 100%. The highest was growth of the self-sufficiency in horse meat, which exceeded 100% in 2004 and was significantly increasing in subsequent years. In 2010, it amounted to 142%. In the 2006-2008 period, in addition to poultry and horse meat, a surplus of beef was detected (103% in 2008). The lowest rate of self-sufficiency has been recorded in the supply balance sheet for pig meat. During the period it ranged between 70% and 85%, and it reached the lowest level in 2010 at just under 52%. In 2009 and 2010, Slovenia was almost entirely self-sufficient as regards sheep and goat meat (98% in 2010).

## BILANCA PROIZVODNJE IN POTROŠNJE ZA JAJCA

## SUPPLY BALANCE SHEET FOR EGGS

Tabela 3: Bilanca proizvodnje in potrošnje za jajca, Slovenija

Table 3: Supply balance sheet for eggs, Slovenia

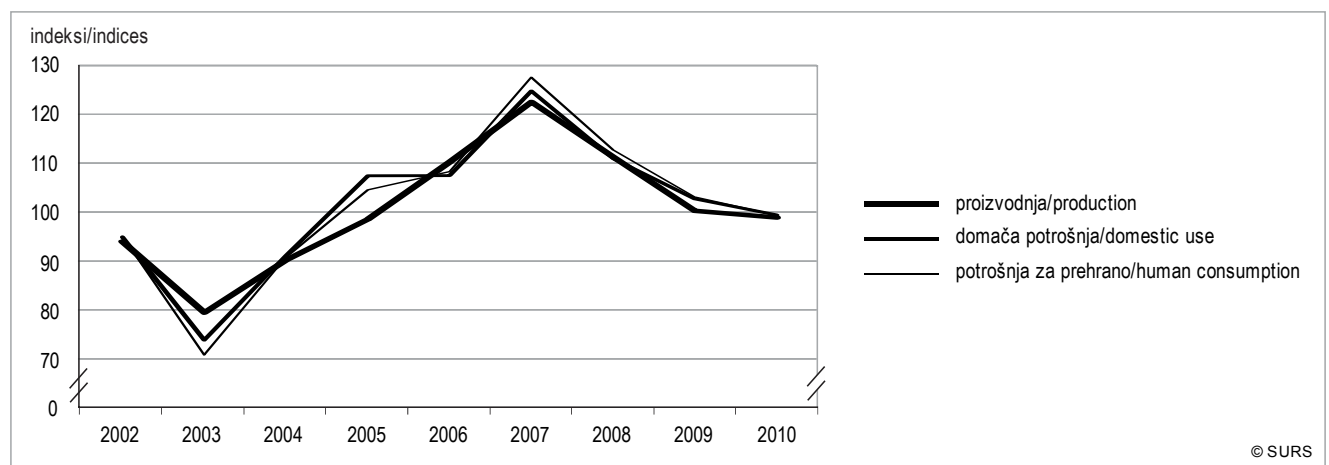
	2001	2002	2003	2004	2005	2006	2007	2008	2009	2010	
1.000 t											
<b>Proizvodnja</b>	<b>21,3</b>	<b>20,1</b>	<b>16,1</b>	<b>14,5</b>	<b>14,3</b>	<b>15,8</b>	<b>19,3</b>	<b>21,5</b>	<b>21,6</b>	<b>21,4</b>	<b>Production</b>
Valilna jajca	2,3	2,3	2,9	2,6	3,3	3,5	3,6	3,6	3,7	4,1	Hatching eggs
Ostala jajca	19,0	17,8	13,2	11,9	11,0	12,3	15,8	17,9	17,9	17,3	Other eggs
<b>Domača potrošnja</b>	<b>21,9</b>	<b>20,8</b>	<b>15,4</b>	<b>14,1</b>	<b>15,2</b>	<b>16,3</b>	<b>20,3</b>	<b>22,6</b>	<b>23,2</b>	<b>23,1</b>	<b>Domestic use</b>
Valilna jajca	1,7	1,6	1,8	1,7	2,2	2,2	2,4	2,3	2,3	2,3	Hatching eggs
Ostala jajca	20,1	19,2	13,7	12,5	13,0	14,1	18,0	20,3	20,9	20,8	Other eggs
<b>Domača potrošnja za prehrano</b>	<b>20,1</b>	<b>19,2</b>	<b>13,7</b>	<b>12,5</b>	<b>13,0</b>	<b>14,1</b>	<b>18,0</b>	<b>20,3</b>	<b>20,9</b>	<b>20,8</b>	<b>Human consumption</b>
Valilna jajca	...	...	...	...	...	...	...	...	...	...	Hatching eggs
Ostala jajca	20,1	19,2	13,7	12,4	13,0	14,1	18,0	20,3	20,9	20,8	Other eggs
%											
<b>Delež potrošnje za prehrano od skupne potrošnje</b>	<b>92,1</b>	<b>92,3</b>	<b>88,6</b>	<b>88,2</b>	<b>85,9</b>	<b>86,5</b>	<b>88,4</b>	<b>89,8</b>	<b>90,0</b>	<b>90,0</b>	<b>Share of human consumption of total domestic use</b>
%											
<b>Stopnja samooskrbe</b>	<b>97,7</b>	<b>96,7</b>	<b>104,0</b>	<b>102,9</b>	<b>94,5</b>	<b>96,8</b>	<b>95,1</b>	<b>95,3</b>	<b>93,1</b>	<b>92,7</b>	<b>Self-sufficiency rate</b>
Valilna jajca	134,3	146,3	161,6	158,8	154,4	158,6	151,5	156,5	158,4	177,2	Hatching eggs
Ostala jajca	94,5	92,6	96,4	95,6	84,5	87,3	87,8	88,4	85,7	83,3	Other eggs
kg na prebivalca / kg per capita											
<b>Potrošnja na prebivalca</b>	<b>10,1</b>	<b>9,6</b>	<b>6,9</b>	<b>6,2</b>	<b>6,5</b>	<b>7,0</b>	<b>8,9</b>	<b>10,0</b>	<b>10,2</b>	<b>10,2</b>	<b>Consumption per capita</b>
Valilna jajca	...	...	...	...	...	...	...	...	...	...	Hatching eggs
Ostala jajca	10,1	9,6	6,9	6,2	6,5	7,0	8,9	10,0	10,2	10,2	Other eggs
Število prebivalcev na dan 30. 6.	1.992.035	1.995.718	1.996.773	1.997.004	2.001.114	2.008.516	2.019.406	2.022.629	2.042.335	2.049.261	Number of population on 30 June

... ni podatka/not available

Vir/Source: SURS/SORS

Grafikon 14: Indeksi proizvodnje, domače potrošnje in potrošnje za prehrano v bilanci za jajca, Slovenija

Chart 14: Indices of production, domestic use and human consumption in the supply balance sheet for eggs, Slovenia



Vir/Source: SURS/SORS

### Celotna proizvodnja jajc v obdobju 2001–2010 okrog 20.000 ton letno

Proizvodnjo jajc v Sloveniji predstavljata proizvodnja valilnih ter drugih jajc oz. jajc za prehrano. Delež proizvodnje drugih jajc od skupne proizvodnje je od leta 2001 nekoliko upadal, po letu 2005 pa je znova začel nekoliko naraščati. Najvišji delež je proizvodnja drugih jajc dosegla leta 2001 z 89 %, nato se je zmanjševala in leta 2005 je z 11.000 tonami predstavljala 77 % celotne proizvodnje jajc. Celotna proizvodnja jajc se je v obdobju med 2001 in 2010 gibala okrog 20.000 ton, z najnižjo vrednostjo 14.000 ton leta 2005.

### Domača potrošnja jajc nekoliko presega domačo proizvodnjo jajc

Domača potrošnja jajc je skoraj v celotnem obdobju nekoliko presega domačo proizvodnjo jajc. Okrog 90 % celotne potrošnje je predstavljala potrošnja drugih jajc. Od leta 2005 dalje je ta delež nekoliko naraščal, delež potrošnje valilnih jajc pa je sorazmerno nekoliko upadal. Velika večina jajc se porabi za prehrano. Delež potrošnje jajc za prehrano se je med letoma 2001 in 2010 gibal nad 86 %.

### Total annual egg production in the 2001-2010 period around 20,000 tonnes

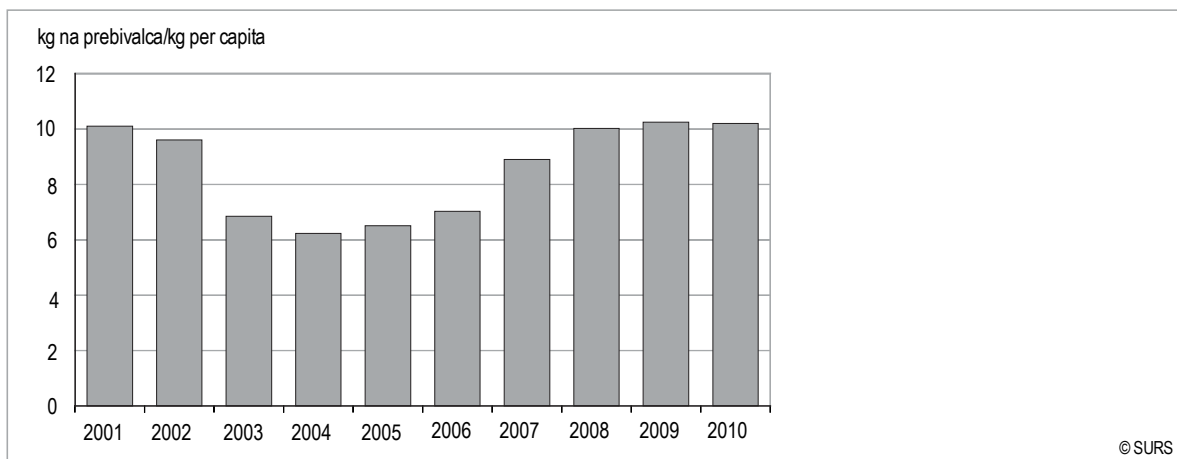
Egg production in Slovenia is represented by the production of hatching eggs and other (table) eggs. The share of other eggs in the total production was slightly declining from 2001 on, and after 2005 it has begun to rise slightly again. The highest share of production of other eggs was recorded in 2001 (89%); later on the production decreased and in 2005 with 11,000 tons represented 77%. Total annual egg production in the 2001-2010 period was around 20,000 tonnes, with the lowest value of 14,000 tonnes in 2005.

### Domestic use of eggs slightly exceeded the production

Domestic use of eggs slightly exceeded the production throughout the entire period. About 90% of total domestic use accounted for consumption of other eggs. From 2005 on, this share has risen slightly, but the share of domestic use of hatching eggs has slightly declined. The vast majority of eggs is used for human consumption. The share of eggs for human consumption was above 86% between 2001 and 2010.

### Grafikon 15: Potrošnja jajc na prebivalca, Slovenija

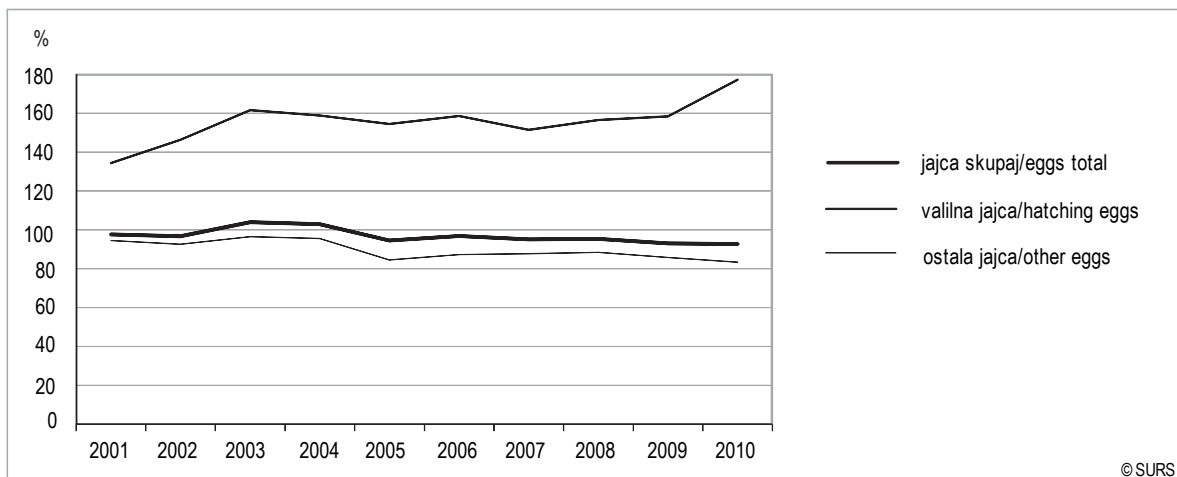
Chart 15: Consumption of eggs per capita, Slovenia



Vir/Source: SURS/SORS

### Grafikon 16: Stopnja samooskrbe v bilanci za jajca, Slovenija

Chart 16: Self-sufficiency rate in the supply balance sheet for eggs, Slovenia



Vir/Source: SURS/SORS

## BILANCA PROIZVODNJE IN POTROŠNJE ZA ZELENJAVO

## SUPPLY BALANCE SHEET FOR VEGETABLES

Proizvodnja zelenjave vključuje poleg pridelave na kmetijskih gospodarstvih tudi pridelavo na hišnih vrtovih

In addition to production on farms, the production of vegetables includes the production in kitchen gardens

Proizvodnja zelenjave vključuje poleg pridelave na kmetijskih gospodarstvih tudi pridelavo na hišnih vrtovih, namenjeno samooskrbi. Vključuje pridelek, pospravljen v koledarskem letu, v katerem se začne referenčno obdobje. Potrošnja se ocenjuje na osnovi posajenih površin in povprečne potrošnje na hektar, potrošnja za prehrano pa vključuje zelenjavo v vseh oblikah. **V Sloveniji se pripravlja poenostavljena bilanca za zelenjavo skupaj, ne pa po posameznih vrstah zelenjave.**

In addition to production on farms, the production of vegetables includes the production in kitchen gardens intended for self-supply. It includes yield harvested in the calendar year that represents the beginning of the reference period. Consumption is estimated on the basis of area sown and average consumption per hectare, but the human consumption includes vegetables in all forms. **In Slovenia the simplified balance of the total vegetables, not by type of vegetables, is compiled.**

Tabela 4: Bilanca proizvodnje in potrošnje za zelenjavo, Slovenija

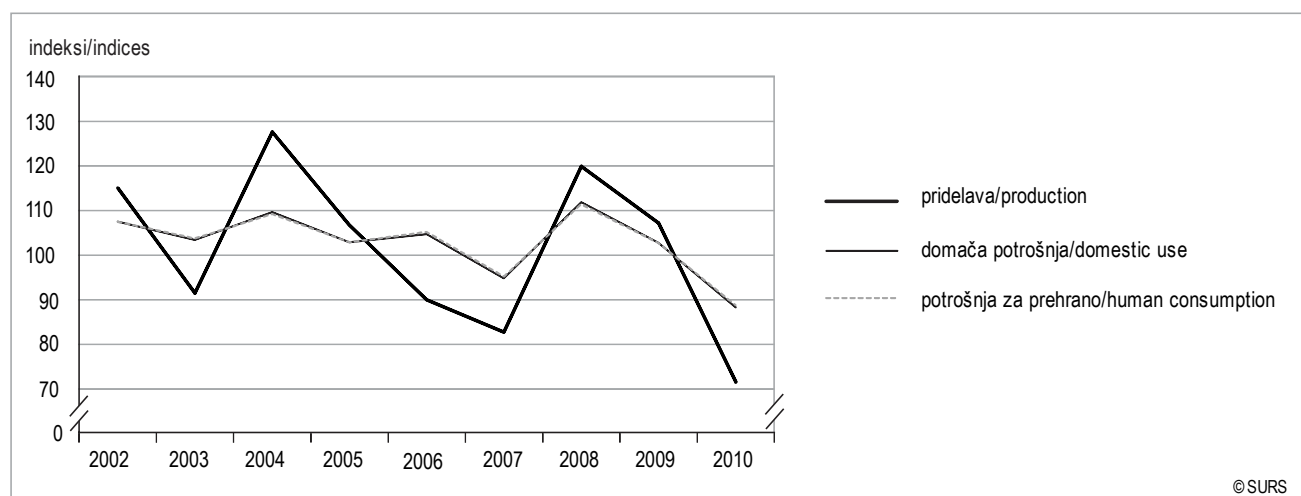
Table 4: Supply balance sheet for vegetables, Slovenia

	2001	2002	2003	2004	2005	2006	2007	2008	2009	2010	
1.000 t											
Pridelava	61,2	70,3	64,3	82,1	87,6	78,8	65,2	78,2	83,9	60,0	Production
Domača potrošnja	155,4	167,1	172,8	189,4	194,9	204,0	193,4	216,2	222,2	196,2	Domestic use
Domača potrošnja za prehrano	146,2	157,1	162,8	177,7	182,6	192,0	182,6	203,3	208,9	185,3	Human consumption
%											
Delež potrošnje za prehrano od skupne potrošnje	94,1	94,0	94,2	93,8	93,7	94,1	94,4	94,0	94,0	94,4	Share of human consumption of total domestic use
%											
Stopnja samooskrbe	39,4	42,1	37,2	43,3	44,9	38,6	33,7	36,2	37,8	30,6	Self-sufficiency rate
kg na prebivalca / kg per capita											
Potrošnja na prebivalca	73,4	78,7	81,5	89,0	91,3	95,6	90,4	100,5	102,3	90,4	Consumption per capita
Število prebivalcev na dan 30. 6.	1.992.035	1.995.718	1.996.773	1.997.004	2.001.114	2.008.516	2.019.406	2.022.629	2.042.335	2.049.261	Number of population on 30 June

Vir/Source: SURS/SORS

Grafikon 17: Indeksi proizvodnje, domače potrošnje in potrošnje za prehrano v bilanci za zelenjavo, Slovenija

Chart 17: Indices of production, domestic use and human consumption in the supply balance sheet for vegetables, Slovenia



Vir/Source: SURS/SORS

### Domača potrošnja se je povečala s 155.000 ton na 196.000 ton

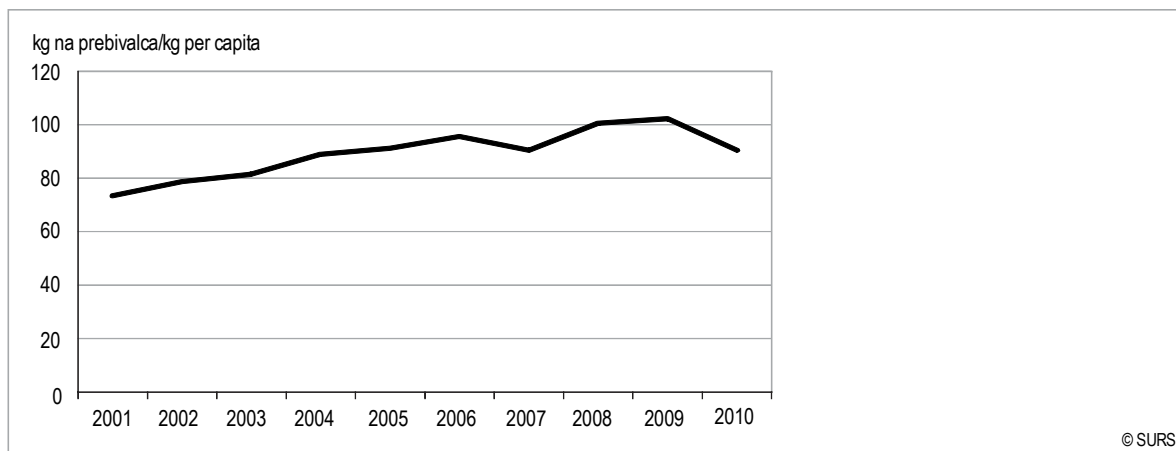
Količinska pridelava je v opazovanem obdobju precej nihala. V Sloveniji smo v obdobju 2001–2010 v povprečju pridelali okrog 70.000 ton zelenjave. Pridelava se je po letu 2007 nekoliko povečala, v letu 2010 pa je ponovno precej upadla, dosegla je 60.000 ton, kar je za skoraj 29 % manj kot v letu prej ter v opazovanem obdobju najmanjša količina. Domača potrošnja zelenjave je v vsem obdobju močno presegala količino pridelave; potrošnja se je namreč povečevala (leta 2001 je znašala 155.000 ton, leta 2010 pa 196.000 ton), zato je stopnja samooskrbe z zelenjavo upadala. Velika večina zelenjave, v povprečju nad 90 % vse v opazovanem obdobju potrošene zelenjave, je bilo potrošene za prehrano.

### Domestic use increased from 155,000 tonnes to 196,000 tonnes

Slovenia produced about 70,000 tonnes of vegetables per year in the 2001-2010 period. The quantitative production has varied between years; after 2007 it has risen again slightly, but in 2010 it decreased again, reaching 60,000 tonnes, which is almost 29% less than in the previous year and the lowest value in the observed period. Domestic consumption of vegetables greatly exceeded the volume of production throughout the period; it was increasing (in 2001 it amounted to 155,000 tonnes, in 2010 to 196,000 tonnes), which is the reason for the decreased rate of self-sufficiency in vegetables. The vast majority, i.e. on average over 90% during the observed period, was used for human consumption.

### Grafikon 18: Potrošnja zelenjave na prebivalca, Slovenija

Chart 18: Consumption of vegetables per capita, Slovenia



Vir/Source: SURS/SORS

### Potrošnja zelenjave na prebivalca v letu 2010 nekoliko padla

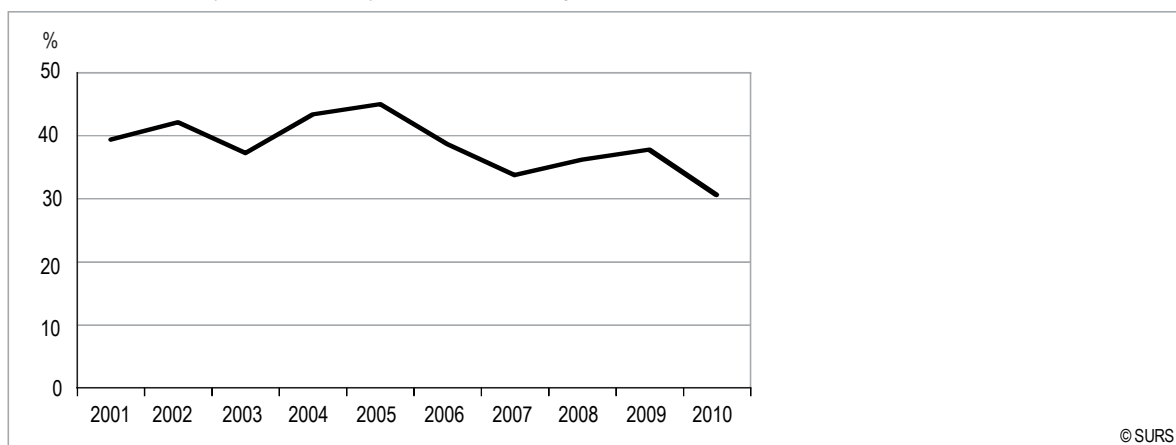
Prebivalec je v obdobju 2001–2009 potrošil na leto v povprečju okrog 90 kg zelenjave. Poraba zelenjave na prebivalca je v tem obdobju naraščala; od leta 2001 do leta 2009 se je povečala s 73 kg na 102 kg. Leta 2010 je v povprečju prebivalec Slovenije potrošil manj, tj. 90 kg zelenjave.

### The consumption of vegetables per capita slightly decreased in 2010

An average citizen consumed around 90 kg of vegetables per year in the 2001-2009 period. Consumption of vegetables per capita has increased from 73 kg in 2001 to 102 kg in 2009. In 2010 every citizen on average consumed less, i.e. 90 kg of vegetables.

### Grafikon 19: Stopnja samooskrbe v bilanci za zelenjavo, Slovenija

Chart 19: Self-sufficiency rate in the supply balance sheet for vegetables, Slovenia



Vir/Source: SURS/SORS



**Stopnja samooskrbe z zelenjavo leta 2010 najnižja doslej**

Izmed vseh doslej izdelanih bilanc je v opazovanem obdobju izkazovala najnižjo stopnjo samooskrbe bilanca zelenjave. V povprečju je v celotnem opazovanem obdobju dosegala nekoliko več kot 35 %. Med letoma 2007 in 2009 se je stopnja samooskrbe v bilanci zelenjave ponovno nekoliko povečevala, leta 2010 pa je upadla na najnižjo raven doslej (31 %).

**Rate of self-sufficiency in the balance sheet for vegetables the lowest so far**

Of all the compiled supply balance sheets, the lowest self-sufficiency rate has been recorded in the balance sheet for vegetables. On average it was above 35% over the whole period. Between 2007 and 2009 the rate of self-sufficiency in the balance sheet for vegetables has increased slightly again, but in 2010 it decreased and reached the lowest level so far (31%).

**BILANCA PROIZVODNJE IN POTROŠNJE ZA KROMPIR****SUPPLY BALANCE SHEET FOR POTATOES****Tabela 5: Bilanca proizvodnje in potrošnje za krompir, Slovenija**

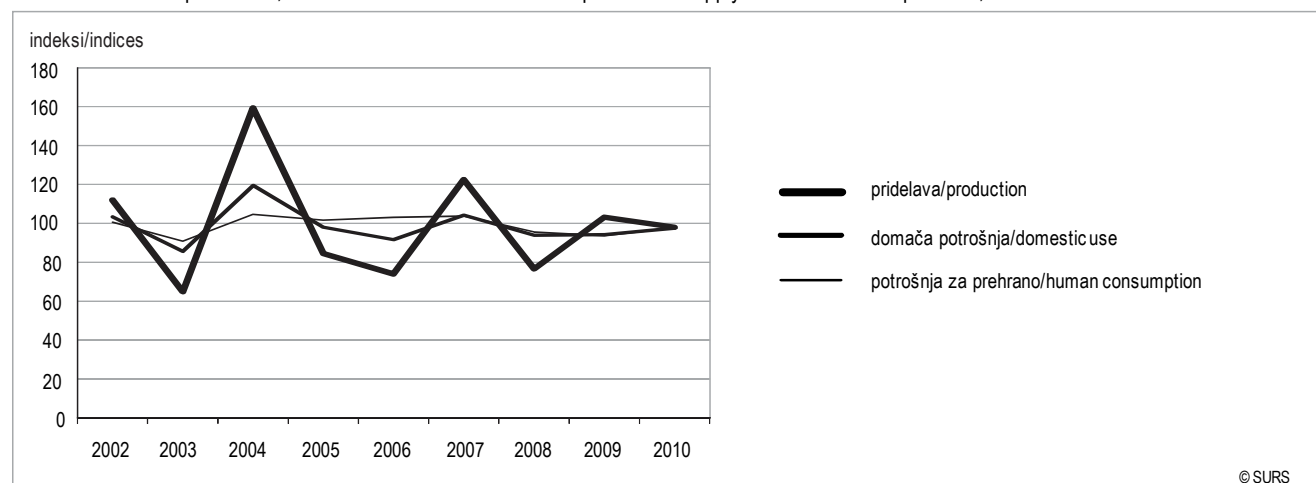
Table 5: Supply balance sheet for potatoes, Slovenia

	2001	2002	2003	2004	2005	2006	2007	2008	2009	2010	
1.000 t											
Pridelava	148,3	166,0	107,6	171,5	144,7	107,0	131,1	100,3	103,4	101,2	Production
Domača potrošnja	188,9	195,1	166,9	199,3	195,3	178,8	186,2	174,8	164,7	160,6	Domestic use
Domača potrošnja za prehrano	158,5	159,3	144,7	151,3	153,7	158,4	164,3	156,9	147,0	143,7	Human consumption
%											
Delež potrošnje za prehrano od skupne potrošnje	83,9	81,7	86,7	75,9	78,7	88,6	88,2	89,8	89,3	89,5	Share of human consumption of total domestic use
%											
Stopnja samooskrbe	78,5	85,0	64,5	86,1	74,1	59,8	70,4	57,4	62,8	63,0	Self-sufficiency rate
kg na prebivalca / kg per capita											
Potrošnja na prebivalca	79,6	79,8	72,4	75,8	76,8	78,9	81,3	77,6	72,0	70,1	Consumption per capita
Število prebivalcev na dan 30. 6.	1.992.035	1.995.718	1.996.773	1.997.004	2.001.114	2.008.516	2.019.406	2.022.629	2.042.335	2.049.261	Number of population on 30 June

Vir/Source: SURS/SORS

**Grafikon 20: Indeksi proizvodnje, domače potrošnje in potrošnje za prehrano v bilanci za krompir, Slovenija**

Chart 20: Indices of production, domestic use and human consumption in the supply balance sheet for potatoes, Slovenia



Vir/Source: SURS/SORS

### Domača proizvodnja in tudi potrošnja krompirja upadata

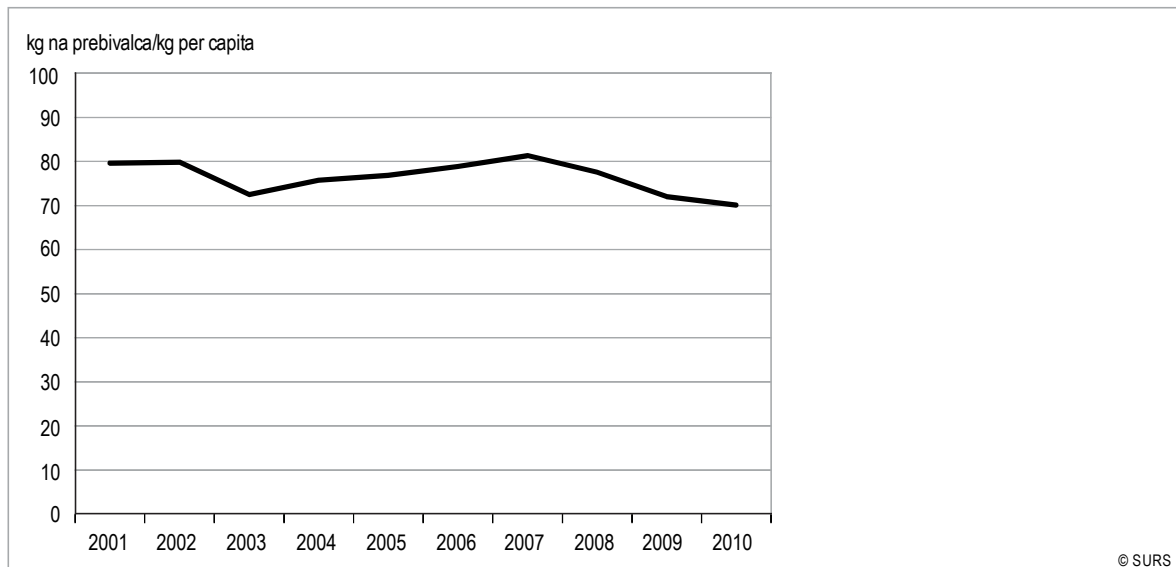
V obdobju 2001–2010 je skupna pridelava krompirja precej upadla. Leta 2001 je znašala več kot 148.000 ton, po letu 2003 pa je, razen v letu 2004, precej upadla. Leta 2010 je pridelava znašala več kot 101.000 ton. Količina domače potrošnje je bila večja od količine domače pridelave v celotnem opazovanem obdobju. V vsem obdobju se je sicer tudi potrošnja krompirja počasi zmanjševala, vendar je bil upad potrošnje manjši kot upad pridelave, zato se je stopnja samooskrbe pri krompirju v opazovanem obdobju precej znižala; leta 2010 je znašala 63 % (leta 2004 pa na primer 86 %). Domača potrošnja krompirja je v 2010 znašala več kot 160.000 ton, od tega je bilo za prehrano namenjenih 90 % krompirja. Potrošnja krompirja za prehrano se je v obdobju gibala med 76 % (leta 2004) in 90 % (v letih 2008, 2009 in 2010).

### Fall in domestic production and consumption of potatoes

In the 2001-2010 period, the total potatoes production declined significantly. In 2001, it amounted to just over 148,000 tonnes and after 2003, with the exception of 2004, significantly decreased. In 2010, the production amounted to just over 101,000 tonnes. The quantity of domestic use exceeded production in the whole period. Throughout the period, a downward trend in consumption of potatoes was detected, but the decline was smaller than in production, so the rate of self-sufficiency in potatoes decreased significantly in the observed period; in 2010 it was 63%, in 2004 it was 86%. Domestic use of potatoes amounted to over 160,000 tons in 2010, of which 90% was used for human consumption. Human consumption of potatoes ranged during the observed period between 76% (2004) and 90% (2008, 2009 and 2010).

### Grafikon 21: Potrošnja krompirja na prebivalca, Slovenija

Chart 21: Consumption of potatoes per capita, Slovenia



Vir/Source: SURS/SORS

### Leta 2010 smo potrošili 70 kg krompirja na prebivalca

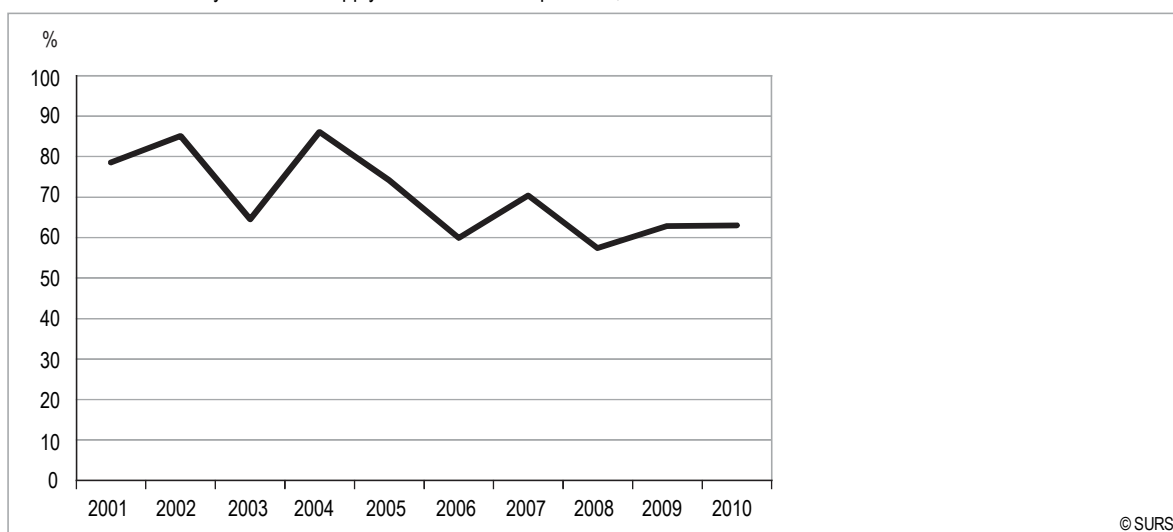
Potrošnja krompirja na prebivalca se je obdobju 2001–2010 počasi zmanjševala. Najnižjo vrednost v opazovanem obdobju je dosegla leta 2010, in sicer 70 kg krompirja na prebivalca.

### In 2010 the consumption of potatoes per capita was 70 kg

Consumption of potatoes per capita recorded a downward trend in the 2001-2010 period. The lowest value of consumption per capita was observed in 2010 when the average Slovene consumed 70 kg of potatoes in one year.

**Grafikon 22: Stopnja samooskrbe v bilanci za krompir, Slovenija**

Chart 22: Self-sufficiency rate in the supply balance sheet for potatoes, Slovenia



Vir/Source: SURS/SORS

**Samooskrbe z zelenjavo, žiti in krompirjem najnižje v Sloveniji**

Samooskrba s krompirjem je po letu 2004 začela upadati, in sicer zaradi precej zmanjšane pridelave krompirja ob hkratnem upadanju domače potrošnje. V opazovanem obdobju je najvišjo stopnjo izkazovala leta 2004 s 86 %, do leta 2010 pa je zdrsnila na 63 %. Poleg bilanc za zelenjavo in žita je bilanca krompirja izkazovala najnižjo stopnjo samooskrbe pri nas.

**Supply balance sheets for vegetables, cereals and potatoes with the lowest self-sufficiency rate in Slovenia**

The self-sufficiency rate in potatoes declined after 2004 due to significantly reduced production of potatoes and a decline in domestic use. During the observed period, the highest rate was recorded in 2004, with 86%, dropping to 63% by 2010. In addition to the supply balance sheets for vegetables and cereals, the balance sheet for potatoes showed the lowest self-sufficiency rate in our country.

**BILANCA PROIZVODNJE IN POTROŠNJE ZA SLADKOR****SUPPLY BALANCE SHEET FOR SUGAR****Tabela 6: Bilanca proizvodnje in potrošnje za sladkor, Slovenija**

Table 6: Supply balance sheet for sugar, Slovenia

	2001	2002	2003	2004	2005	2006	2007	2008	2009	2010	
<b>1.000 t</b>											
<b>Pridelava</b>	<b>211,8</b>	<b>267,3</b>	<b>230,3</b>	<b>253,3</b>	<b>322,2</b>	<b>307,7</b>	<b>1,5</b>	<b>1,6</b>	<b>1,9</b>	<b>1,7</b>	<b>Production</b>
Sladkorna pesa	185,7	232,2	202,1	213,1	260,1	262,0	...	...	...	...	Sugar beat
Beli sladkor	23,5	32,7	26,3	37,8	60,4	43,4	0,0	0,0	0,0	0,0	White sugar
Med	2,6	2,5	1,9	2,4	1,7	2,3	1,5	1,6	1,9	1,7	Honey
<b>Domača potrošnja</b>	<b>259,5</b>	<b>301,6</b>	<b>269,3</b>	<b>352,6</b>	<b>494,3</b>	<b>365,2</b>	<b>57,6</b>	<b>84,7</b>	<b>92,8</b>	<b>73,0</b>	<b>Domestic use</b>
Sladkorna pesa	185,7	232,2	202,1	269,8	390,9	291,9	...	...	...	...	Sugar beat
Beli sladkor	71,4	67,1	65,3	80,4	101,2	70,5	55,7	82,8	90,5	70,8	White sugar
Med	2,4	2,3	1,9	2,3	2,2	2,8	1,9	1,9	2,3	2,3	Honey
<b>Domača potrošnja za prehrano</b>	<b>73,8</b>	<b>69,4</b>	<b>67,2</b>	<b>82,7</b>	<b>103,4</b>	<b>73,3</b>	<b>57,6</b>	<b>84,7</b>	<b>92,8</b>	<b>73,0</b>	<b>Human consumption</b>
Sladkorna pesa	0,0	0,0	0,0	0,0	0,0	0,0	0,0	0,0	0,0	0,0	Sugar beat
Beli sladkor	71,4	67,1	65,3	80,4	101,2	70,5	55,7	82,8	90,5	70,8	White sugar
Med	2,4	2,3	1,9	2,3	2,2	2,8	1,9	1,9	2,3	2,3	Honey

... ni podatka/not available

Vir/Source: SURS/SORS

**Tabela 6: Bilanca proizvodnje in potrošnje za sladkor, Slovenija (nadaljevanje)**

Table 6: Supply balance sheet for sugar, Slovenia (continued)

	2001	2002	2003	2004	2005	2006	2007	2008	2009	2010	
%											
<b>Delež potrošnje za prehrano od skupne potrošnje</b>	<b>28,4</b>	<b>23,0</b>	<b>25,0</b>	<b>23,5</b>	<b>20,9</b>	<b>20,1</b>	<b>100,0</b>	<b>100,0</b>	<b>100,0</b>	<b>100,0</b>	<b>Share of human consumption of total domestic use</b>
%											
<b>Stopnja samooskrbe</b>	<b>81,6</b>	<b>88,6</b>	<b>85,5</b>	<b>71,8</b>	<b>65,2</b>	<b>84,3</b>	<b>2,6</b>	<b>1,9</b>	<b>2,1</b>	<b>2,3</b>	<b>Self-sufficiency rate</b>
Sladkorna pesa	100,0	100,0	100,0	79,0	66,5	89,8	...	...	...	...	Sugar beet
Beli sladkor	32,9	48,7	40,3	47,0	59,7	61,6	0,0	0,0	0,0	0,0	White sugar
Med	104,5	105,2	97,4	102,2	75,0	80,9	77,9	81,4	84,9	75,2	Honey
kg na prebivalca / kg per capita											
<b>Potrošnja na prebivalca</b>	<b>37,0</b>	<b>34,8</b>	<b>33,7</b>	<b>41,4</b>	<b>51,7</b>	<b>36,5</b>	<b>28,5</b>	<b>41,9</b>	<b>45,4</b>	<b>35,6</b>	<b>Consumption per capita</b>
Sladkorna pesa	0,0	0,0	0,0	0,0	0,0	0,0	0,0	0,0	0,0	0,0	Sugar beet
Beli sladkor	35,8	33,6	32,7	40,3	50,6	35,1	27,6	40,9	44,3	34,5	White sugar
Med	1,2	1,2	1,0	1,2	1,1	1,4	0,9	1,0	1,1	1,1	Honey
Število prebivalcev na dan 30. 6.	1.992.035	1.995.718	1.996.773	1.997.004	2.001.114	2.008.516	2.019.406	2.022.629	2.042.335	2.049.261	Number of population on 30 June

... ni podatka/not available

Vir/Source: SURS/SORS

#### Delež potrošnje sladkorja za prehrano se je v letu 2010 precej zmanjšal

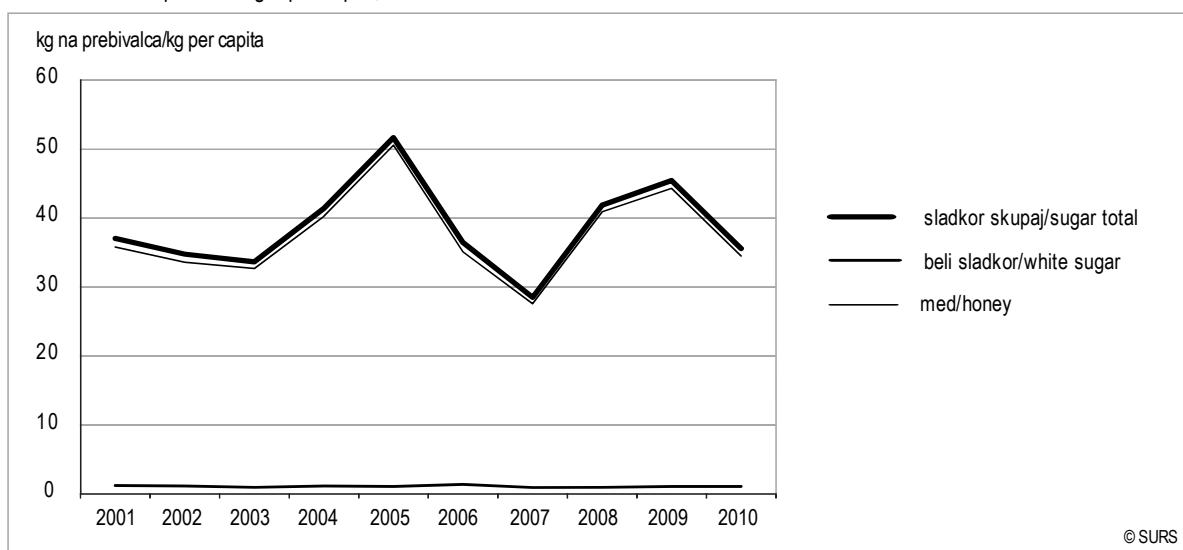
Do leta 2006, ko je še obratovala Tovarna Ormož, je celotna proizvodnja sladkorja nihala; leta 2006 je znašala več kot 300.000 ton. Od tega je v celotnem obdobju nad 80 % predstavljala proizvodnja sladkorne pese. K skupni vrednosti proizvodnje sladkorja je okrog 10 % v opazovanem obdobju prispevala proizvodnja belega sladkorja, z največjim deležem leta 2005 (skoraj 15 %), pridelava medu pa je znašala okrog 1 % od vse proizvodnje, to je v obdobju od 2001 do 2006 pomenilo več kot 2.000 ton. V zadnjih letih se je pridelava medu nekoliko zmanjšala. Potrošnja sladkorja je v opazovanem obdobju presegala domačo proizvodnjo, zato v Sloveniji s sladkorjem nismo bili v celoti samooskrbni. Do leta 2006 se je skupna potrošnja gibala med 260.000 in 500.000 tonami, potrošnja medu pa v povprečju nekoliko nad 2.000 ton letno. Delež potrošnje za prehrano je med letoma 2001 in 2010 precej nihal, leta 2010 pa se je po letu 2009, ko je dosegel eno največjih vrednosti (skoraj 93 %), zmanjšal za 20 odstotnih točk.

#### In 2010 the share of sugar for human consumption significantly decreased

By 2006, when the sugar factory in Ormož was still operating, the total production of sugar varied; in 2006 it amounted to over 300,000 tonnes. Of this, over the whole period sugar beet production accounted for over 80%. The production of white sugar contributed to around 10% of the total sugar production during the observed period, with the largest share in 2005 (almost 15%). Honey production stood at around 1% of the total production, with more than 2,000 tonnes during the 2001-2006 period. In recent years the production of honey has slightly fallen. Domestic use of sugar was higher than domestic production, which is why Slovenia has not been entirely self-sufficient in sugar. By 2006, the total domestic use was between 260,000 and 500,000 tonnes and domestic use of honey on average slightly more than 2,000 tonnes per year. The share of human consumption varied considerably between 2001 and 2010, and in 2010, after 2009 when it reached one of the highest values (almost 93%), it decreased by 20 percentage points.

**Grafikon 23: Potrošnja sladkorja na prebivalca, Slovenija**

Chart 23: Consumption of sugar per capita, Slovenia



Vir/Source: SURS/SORS

**Največ sladkorja na prebivalca smo potrošili leta 2005, skoraj 52 kg**

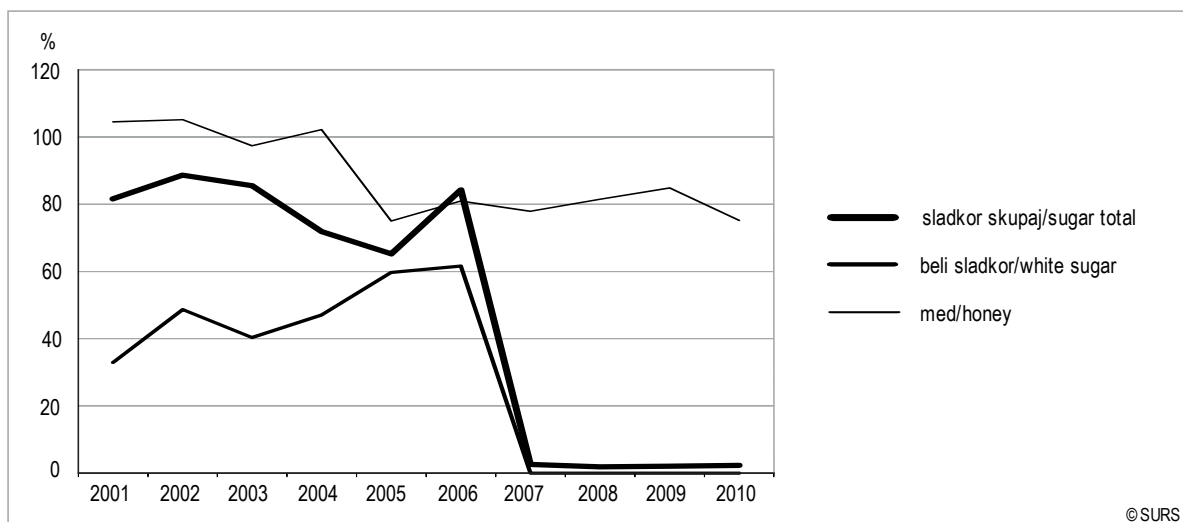
Potrošnja sladkorja na prebivalca je v Sloveniji v obdobju 2001–2010 nihala, največjo vrednost je dosegla leta 2005, skoraj 52 kg, in 2009, več kot 45 kg na prebivalca. Od tega je veliko večino predstavljala potrošnja belega sladkorja, ki se je gibala okrog 40 kg letno. Med leti je potrošnja belega sladkorja precej nihala. Leta 2010 je potrošnja sladkorja na prebivalca v primerjavi s predhodnim letom upadla za skoraj 10 kg, znašala je skoraj 36 kg na prebivalca. Potrošnja medu na prebivalca je bila vsa leta stabilnejša; znašala je okrog 1 kg na leto.

**Consumption of sugar per capita the highest in 2005 with almost 52 kg per capita**

Consumption of sugar per capita varied in Slovenia in the 2001-2010 period, reaching the highest value in 2005 (almost 52 kg) and 2009 (over 45 kg). Of these, the vast majority is represented by the domestic consumption of white sugar, which was around 40 kg per year and in 2010 it amounted to almost 36 kg per capita. Over the years, the domestic use of white sugar varied considerably. Consumption of honey per capita was stable at about 1 kg per capita per year.

**Grafikon 24: Stopnja samooskrbe v bilanci za sladkor, Slovenija**

Chart 24: Self-sufficiency rate in the supply balance sheet for sugar, Slovenia



Vir/Source: SURS/SORS

### Samooskrba s sladkorjem po letu 2006 okrog 2-odstotna

Stopnja samooskrbe s sladkorjem se je po letu 2006, odkar je bila opuščena domača proizvodnja sladkorne pese in belega sladkorja, bistveno spremenila. Do leta 2006 je nihala, najvišjo vrednost pa je dosegla v letih 2002 in 2006, in sicer čez 84 %. V obdobju med 2001 in 2006 se je gibala med 65 % in 90 %. Ker domače proizvodnje sladkorja v Sloveniji nimamo več, proizvajamo pa točeni med, se je stopnja samooskrbe v tej bilanci po letu 2006 gibala okrog 2 %.

### The rate of self-sufficiency with sugar is around 2% after 2006

With the termination of the domestic production of sugar beet and white sugar, since 2006 self-sufficiency has changed significantly. Until 2006, it varied and reached the highest level in 2002 and 2006, when it was just over 84%. In the 2001-2006 period it was between 65% and 90%. Since there is no domestic production in Slovenia and we still produce honey, the rate of self-sufficiency in this balance sheet was around 2% after 2006.

### BILANCA PROIZVODNJE IN POTROŠNJE ZA RIŽ

### SUPPLY BALANCE SHEET FOR RICE

Tabela 7: Bilanca proizvodnje in potrošnje za riž, Slovenija

Table 7: Supply balance sheet for rice, Slovenia

	2001	2002	2003	2004	2005	2006	2007	2008	2009	2010	
1.000 t											
Pridelava	0,1	0,1	0,0	0,1	0,1	0,1	0,2	0,2	0,0	0,0	Production
Domača potrošnja	7,8	8,1	7,9	7,3	8,2	8,4	9,0	8,8	8,8	10,6	Domestic use
Domača potrošnja za prehrano	7,3	7,6	7,1	6,7	8,0	8,2	8,6	8,4	8,7	10,4	Human consumption
%											
Delež potrošnje za prehrano od skupne potrošnje	93,3	93,8	90,3	90,7	96,7	97,4	95,8	95,3	98,8	98,1	Share of human consumption of total domestic use
%											
Stopnja samooskrbe	1,4	0,7	0,4	0,8	0,6	0,8	1,7	2,1	0,0	0,0	Self-sufficiency rate
kg na prebivalca / kg per capita											
Potrošnja na prebivalca	3,6	3,8	3,6	3,3	4,0	4,1	4,2	4,1	4,3	5,1	Consumption per capita
Število prebivalcev na dan 30. 6.	1.992.035	1.995.718	1.996.773	1.997.004	2.001.114	2.008.516	2.019.406	2.022.629	2.042.335	2.049.261	Number of population on 30 June

Vir/Source: SURS/SORS

### Stopnja samooskrbe z rižem najnižja

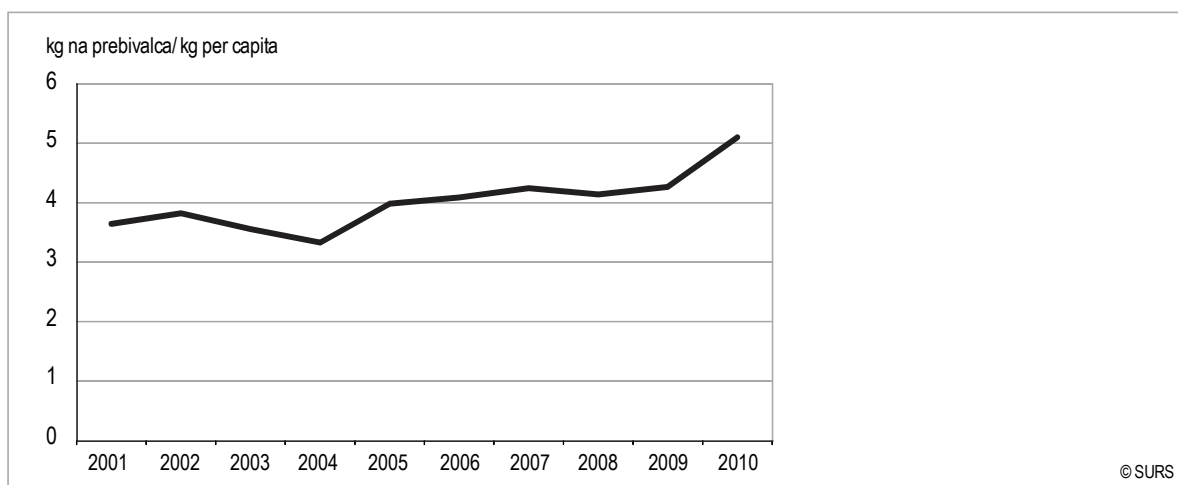
V celotnem opazovanem obdobju (2001–2010) domače proizvodnje riža nismo imeli. V tem obdobju smo v povprečju potrošili okrog 8.000 ton riža letno, leta 2010 nekoliko več (10.000 ton). Okrog 95 % celotne potrošnje riža je bilo v povprečju namenjena za prehrano. Ker domače proizvodnje riža nismo imeli, bilanca riža pa vključuje tudi iz riža predelane proizvode, je bilanca riža izkazovala najnižjo stopnjo samooskrbe (1 %–2 %).

### The balance sheet for rice with the lowest rate of self-sufficiency

In the entire observed period (2001-2010) there was no domestic production of rice. In this period, we consumed about 8,000 tonnes of rice annually on average, in 2010 a little more (10,000 tonnes). The vast majority, on average around 95% of the total domestic use, is used for human consumption. Due to no domestic production and the inclusion of processed rice products in the balance sheet, the balance sheet for rice showed the lowest rate of self-sufficiency (1%-2%).

**Grafikon 25: Potrošnja riža na prebivalca, Slovenija**

Chart 25: Consumption of rice per capita, Slovenia



Vir/Source: SURS/SORS

**V letu 2010 smo potrošili več riža na prebivalca, tj. 5 kg**

Potrošnja riža na prebivalca je v zadnjih letih naraščala in je leta 2010 dosegla največjo vrednost, več kot 5 kg riža na prebivalca.

**In 2010, we consumed more rice per capita, ie. 5 kg**

Consumption of rice per capita has increased in recent years and in 2010 reached the highest value, more than 5 kg of rice per capita.

**BILANCA PROIZVODNJE IN POTROŠNJE ZA VINO****Sestava in definicija bilance vina**

Bilanca vina je sestavljena iz več podbilanc glede na kakovostne razrede in glede na barvo. Po kakovosti se bilanca vina deli na podbilanco za kakovostno vino z določenih pridelovalnih območij, za namizno vino in za drugo vino, vsaka od teh bilanc pa še glede na barvo na podbilanco za belo vino in za rdeče vino ali rozé. Vino, ki je predmet bilanc, je definirano kot alkoholna pijača, pridobljena izključno z alkoholnim vrenjem iz stisnjene grozdja ali iz grozdnega mošta. Zajema tudi vino, ki je še v fermentaciji. Namizno vino je vino, proizvedeno v EU, ki ima minimalno alkoholno stopnjo, kot je določena za pridelovalno območje, v katerem je bilo vino proizvedeno, ali vino, pridobljeno v EU, ki ustreza specifičnim merilom glede kakovosti. To vino ima lahko status vina z geografskim poreklom ali tega statusa nima. Po dogovoru sodi med namizno vino tudi vse vino, ki je namenjeno za likersko vino, peneče vino, gazirano peneče vino, polpeneče vino, gazirano polpeneče vino in vino, okrepljeno z destilacijo, razen nekaterih izjem. Kakovostno vino je lahko mirno vino, likersko vino, peneče vino, polpeneče vino ali drugo vino, ki izpolnjuje nacionalna merila. Seznam kakovostnih vin je objavljen v Uradnem listu EU. Med druga vina spadajo vina, proizvedena iz grozdja namiznih sort, sort za rozine ter iz grozdja, ki je sicer namenjeno za destilacijo v grozdno žganje, in tudi vino iz prezrelega grozdja ter vse vino, ki ni proizvedeno v EU.

**Bilanca za vino za tržno leto 2009/2010 prvič objavljena po novi razdelitvi kakovostnih razredov vina**

V skladu z Uredbo Evropske komisije št. 479/2008 končno bilanco za vino za tržno leto 2009/10 prvič objavljamo po novi razdelitvi kakovostnih razredov vina. Po tej uredbi se vino po novem glede na kakovost deli na naslednje razrede: vina z zaščiteno označbo porekla, vina z zaščiteneh

**SUPPLY BALANCE SHEET FOR WINE****Composition and definition of the balance sheet for wine**

The balance sheet for the wine is composed of several sub-balances according to the classes of quality and colour. According to the quality, the balance sheet for wine is composed of the balance for quality wines from specific growing areas, table wines and other wines; each of these balances is then according to the colour divided into the balance for white wine and for red / rosé wine. Wine which is the subject of the balance is defined as an alcoholic drink obtained exclusively by fermentation of pressed grapes or grape must. It also includes wine still in fermentation. Table wine is wine produced in the EU which has a minimum alcohol level as determined for the region in which the wine was produced, or wine made in the EU which meets specific criteria in terms of quality. This wine can be with or without designation of origin. By agreement, table wine also includes all wine which is intended for liqueur wine, sparkling wine, aerated sparkling wine, semi-sparkling wine, aerated semi-sparkling wine and wine fortified with distillation, with some exceptions. Quality wine can be still wine, liqueur wine, sparkling wine, semi-sparkling wine or other wine which meets the national criteria. The list of quality wines is published in the Official Journal of the EU. Other wine is considered to be wine made from grapes of table varieties, varieties for raisins and grapes which are intended for the distillation of grape spirit, as well as wine from overripe grapes, and all wine that is not produced in the EU.

**Supply balance sheet for wine for market year 2009/10 published for the first time according to the new distribution of wine quality classes**

In accordance with the European Commission Regulation No. 479/2008, the final supply balance sheet for wine for market year 2009/10 is published for the first time according to the new distribution of wine quality classes. According to the new regulation the quality of wine is divided into classes: wines with



geografskim poreklom, sortna vina in druga vina. Izdelane končne bilance za tržna leta od 2005/06 do 2008/09 zaradi različne razdelitve kakovostnih razredov vin niso primerljive z bilanco za vino za tržno leto 2009/10.

protected designation of origin (PDO), wines with protected geographical origin (PGI), varietal wines and other wines. Due to different distribution of wine quality classes, the supply balance sheets, compiled for the market years between 2005/06 to 2008/09, are not comparable with the last one.

**Tabela 8: Bilanca proizvodnje in potrošnje za vino, Slovenija**

Table 8: Supply balance sheet for wine, Slovenia

	2005/06	2006/07	2007/08	2008/09	
<b>1.000 hl</b>					
<b>Proizvodnja</b>	<b>846,0</b>	<b>738,4</b>	<b>857,8</b>	<b>740,0</b>	<b>Production</b>
<b>od tega bela vina</b>	<b>571,0</b>	<b>512,7</b>	<b>576,5</b>	<b>488,8</b>	<b>of which white wines</b>
Kakovostna vina	533,0	498,0	640,0	554,0	Quality wines
Namizna vina brez geo.porekla	59,9	28,6	54,5	34,0	Table wines without geographical designation of origin
Namizna vina z geo.poreklom	253,1	211,8	163,4	152,0	Table wines with geographical designation of origin
Ostala vina	0,0	0,0	0,0	0,0	Other wines
<b>Domača potrošnja</b>	<b>886,0</b>	<b>808,6</b>	<b>816,4</b>	<b>764,4</b>	<b>Domestic use</b>
<b>od tega bela vina</b>	<b>605,8</b>	<b>551,9</b>	<b>510,5</b>	<b>521,4</b>	<b>of which white wines</b>
Kakovostna vina	518,2	492,6	572,4	532,2	Quality wines
Namizna vina brez geo.porekla	69,3	20,8	57,3	33,2	Table wines without geographical designation of origin
Namizna vina z geo.poreklom	267,8	278,5	171,7	192,2	Table wines with geographical designation of origin
Ostala vina	30,6	16,6	15,0	6,8	Other wines
<b>Domača potrošnja za prehrano</b>	<b>869,1</b>	<b>793,8</b>	<b>799,2</b>	<b>749,6</b>	<b>Human consumption</b>
<b>od tega bela vina</b>	<b>594,4</b>	<b>541,6</b>	<b>499,0</b>	<b>511,6</b>	<b>of which white wines</b>
Kakovostna vina	507,6	482,7	559,6	521,1	Quality wines
Namizna vina brez geo.porekla	68,1	20,3	56,3	32,6	Table wines without geographical designation of origin
Namizna vina z geo.poreklom	262,8	274,3	168,5	189,1	Table wines with geographical designation of origin
Ostala vina	30,6	16,6	15,0	6,8	Other wines
%					
<b>Delež potrošnje za prehrano od skupne potrošnje</b>	<b>98,1</b>	<b>98,2</b>	<b>97,9</b>	<b>98,1</b>	<b>Share of human consumption in total domestic use</b>
%					
<b>Stopnja samooskrbe</b>	<b>95,5</b>	<b>91,3</b>	<b>105,1</b>	<b>96,8</b>	<b>Self-sufficiency rate</b>
<b>od tega bela vina</b>	<b>94,3</b>	<b>92,9</b>	<b>112,9</b>	<b>93,7</b>	<b>of which white wines</b>
Kakovostna vina	102,9	101,1	111,8	104,1	Quality wines
Namizna vina brez geo.porekla	86,4	137,4	95,0	102,3	Table wines without geographical designation of origin
Namizna vina z geo.poreklom	94,5	76,0	95,1	79,1	Table wines with geographical designation of origin
Ostala vina	0,0	0,0	0,0	0,0	Other wines
<b>l na prebivalca / l per capita</b>					
<b>Potrošnja na prebivalca</b>	<b>43,4</b>	<b>39,5</b>	<b>39,6</b>	<b>37,1</b>	<b>Consumption per capita</b>
<b>od tega bela vina</b>	<b>29,7</b>	<b>27,0</b>	<b>24,7</b>	<b>25,3</b>	<b>of which white wines</b>
Kakovostna vina	25,4	24,0	27,7	25,8	Quality wines
Namizna vina brez geo.porekla	3,4	1,0	2,8	1,6	Table wines without geographical designation of origin
Namizna vina z geo.poreklom	13,1	13,7	8,3	9,4	Table wines with geographical designation of origin
Ostala vina	1,5	0,8	0,7	0,3	Other wines
Število prebivalcev na dan 1. 1.	2.001.114	2.008.516	2.019.406	2.022.629	Number of population on 1 January

Vir/Source: SURS/SORS

### V Sloveniji prevladuje proizvodnja belih vin

V tržnem obdobju med 2005/06 in 2008/09 je proizvodnja vin nihala. Najvišja je bila v letu 2007/08, in sicer je znašala skoraj 860.000 hektolitrov. V letu 2008/09 je upadla na 740.000 hektolitrov. V celotnem opazovanem obdobju, razen v zadnjem prikazanem letu, je proizvodnja belih vin znašala nad 500.000 hektolitrov in je predstavljala v povprečju okrog 65 % celotne proizvodnje vina.

### In Slovenia the domestic production of white wines prevails

In the market period between 2005/06 and 2008/09, the domestic production of wines varied. It was the highest in 2007/08, when it amounted to almost 860,000 hectoliters. In 2008/09 it fell to 740,000 hectoliters. Throughout this period, except in the last year shown, the domestic production of white wines ranged over 500,000 hectoliters, representing on average about 65% of total wine production.

**V obdobju 2005/06–2008/09 proizvodnja kakovostnih precej večja od proizvodnje namiznih vin**

V obdobju 2005/06–2008/09 smo glede na kakovost vin ločili kakovostna, namizna in druga vina. V Sloveniji je v tem opazovanem obdobju prevladovala proizvodnja kakovostnih vin; ta je v celotnem obdobju naraščala in je v letu 2008/09 obsegala 75 % skupne proizvodnje. Okrog 25 % proizvodnje vin je v letu 2008/09 obsegala proizvodnja namiznih vin (brez geografskega porekla in z geografskim poreklom skupaj). Delež proizvodnje namiznih vin se je v obdobju od 2005/06 do 2008/09 zmanjševal na račun povečane proizvodnje kakovostnih vin.

**In the 2005/06-2008/09 period the production of quality wines higher than the production of table wines**

According to the quality, in the period of 2005/06-2008/09, wines were divided into quality wines, table wines and other wines. In Slovenia, in this whole period the production of quality wines dominated. It was increasing throughout the period and it represented 75% of total production in 2008/09. Approximately 25% of the wine production was represented by the production of table wines (without and with the geographical origin) in 2008/09. The share of the production of table wines in the period from 2005/06 to 2008/09 fell on account of increased production of quality wines.

**Tabela 9: Bilanca proizvodnje in potrošnje za vino, Slovenija**

Table 9: Supply balance sheet for wine, Slovenia

	2009/10	
1.000 hl		
<b>Proizvodnja</b>	<b>790,0</b>	<b>Production</b>
<b>od tega bela vina</b>	<b>498,9</b>	<b>of which white wines</b>
Vina z zaščiteno označbo porekla	539,0	Wines with protected designation of origin
Vina z zaščitnim geografskim poreklom	196,7	Wines with protected geographical indication
Sortna vina	0,0	Varietal wines
Druga vina	54,3	Other wines
<b>Domača potrošnja</b>	<b>788,5</b>	<b>Domestic use</b>
<b>od tega bela vina</b>	<b>500,6</b>	<b>of which white wines</b>
Vina z zaščiteno označbo porekla	495,8	Wines with protected designation of origin
Vina z zaščitnim geografskim poreklom	228,3	Wines with protected geographical indication
Sortna vina	13,9	Varietal wines
Druga vina	50,5	Other wines
<b>Domača potrošnja za prehrano</b>	<b>772,7</b>	<b>Human consumption</b>
<b>od tega bela vina</b>	<b>490,6</b>	<b>of which white wines</b>
Vina z zaščiteno označbo porekla	485,1	Wines with protected designation of origin
Vina z zaščitnim geografskim poreklom	224,4	Wines with protected geographical indication
Sortna vina	13,9	Varietal wines
Druga vina	49,4	Other wines
%		
<b>Delež potrošnje za prehrano od skupne potrošnje</b>	<b>98,0</b>	<b>Share of human consumption of total domestic use</b>
%		
<b>Stopnja samooskrbe</b>	<b>100,2</b>	<b>Self-sufficiency rate</b>
<b>od tega bela vina</b>	<b>99,7</b>	<b>of which white wines</b>
Vina z zaščiteno označbo porekla	108,7	Wines with protected designation of origin
Vina z zaščitnim geografskim poreklom	86,2	Wines with protected geographical indication
Sortna vina	0,0	Varietal wines
Druga vina	107,6	Other wines
<b>I na prebivalca / I per capita</b>		
<b>Potrošnja na prebivalca</b>	<b>37,7</b>	<b>Consumption per capita</b>
<b>od tega bela vina</b>	<b>23,9</b>	<b>of which white wines</b>
Vina z zaščiteno označbo porekla	23,7	Wines with protected designation of origin
Vina z zaščitnim geografskim poreklom	10,9	Wines with protected geographical indication
Sortna vina	0,7	Varietal wines
Druga vina	2,4	Other wines
Število prebivalcev na dan 1. 1.	2.046.976	Number of population on 1 January

Vir/Source: SURS/SORS

**V tržnem letu 2009/10 skupna proizvodnja vin večja**

V tržnem letu 2009/10 se je v primerjavi z letom prej proizvodnja vin povečala ter dosegla 790.000 hektolitrov vina. Od tega je večino, to je 63 % (ali skoraj 500.000 hektolitrov) od celotne proizvodnje, predstavljala proizvodnja belih vin. Proizvodnja drugih vin je bila manjša, znašala je 54.000 hektolitrov.

**In the 2009/10 marketing year total production of wine higher**

In comparison with the previous year, the production of wine increased in the marketing year 2009/10 and it reached 790,000 hectolitres of wine. Out of this, the majority, i.e. 63% (almost 500,000 hectolitres) of the total production, was represented by the production of white wines. The production of other wines was lower, it amounted to 54,000 hectolitres.

### Prevladovala je proizvodnja vin z zaščiteno označbo porekla

V skladu z novo uredbo Evropske komisije od tržnega leta 2009/10 dalje vina po kakovosti delimo v naslednje razrede: vina z zaščiteno označbo porekla, vina z zaščitenim geografskim poreklom, sortna ter druga vina. V tem tržnem letu je v Sloveniji prevladovala proizvodnja vin z zaščiteno označbo porekla, kar je predstavljalo 68 % vse proizvodnje. Delež proizvodnje vin z zaščitenim geografskim poreklom je tedaj znašal 25 %.

### Production of wines with protected designation of origin prevailed

As regards the new regulation of the European Commission, from the marketing year 2009/10 onwards wines are distinguished into classes: wines with protected designation of origin, wines with protected geographical indication, varietal wines and other wines. In the observed marketing year the production of wines with protected designation of origin prevailed, they represented 68% of the production. The share of the production of wines with protected geographical indication was 25%.

**Tabela 10: Potrošnja vina na prebivalca, Slovenija**

Table 10: Consumption of wine per capita, Slovenia

	2005/06	2006/07	2007/08	2008/09	
<b>I na prebivalca / I per capita</b>					
<b>Vino skupaj</b>	<b>43,4</b>	<b>39,5</b>	<b>39,6</b>	<b>37,1</b>	<b>Wine total</b>
<b>od tega bela vina</b>	<b>29,7</b>	<b>27,0</b>	<b>24,7</b>	<b>25,3</b>	<b>of which white wines</b>
Kakovostna vina	25,4	24,0	27,7	25,8	Quality wines
Namizna vina brez geografskega porekla	3,4	1,0	2,8	1,6	Table wines without geographical designation of origin
Namizna vina z geografskim poreklom	13,1	13,7	8,3	9,4	Table wines with geographical designation of origin
Ostala vina	1,5	0,8	0,7	0,3	Other wines

Vir/Source: SURS/SORS

### Domača potrošnja vin med leti 2005/06 in 2008/2009 upadala

V opazovanem obdobju, tj. med 2005/06 in 2008/09, je nad 60 % celotne domače potrošnje vina predstavljala potrošnja belih vin. Delež doma porabljenih kakovostnih vin je v tem obdobju nihal, leta 2008/09 pa je znašal skoraj 70 %; približno toliko je znašal tudi v letu pred tem. Potrošnja namiznih vin se je v opazovanem obdobju zmanjševala: od skoraj 340.000 hektolitrov v tržnem letu 2005/06 se je zmanjšala na 225.000 hektolitrov v tržnem letu 2008/09.

### Povprečno 26 litrov kakovostnih in 10 litrov namiznih vin na prebivalca v 2008/09

V tržnem letu 2008/09 je vsak prebivalec Slovenije popil povprečno 37 litrov vina, od tega skoraj 26 litrov kakovostnih vin in 10 litrov namiznih vin; to je kar za 15 % manj kot v tržnem letu 2005/06, takrat je znašala povprečna potrošnja vina nekoliko več kot 43 litrov vina na prebivalca.

### Domestic use of wine decreased during 2005/06 and 2008/09

Over 60% of the total domestic use of wine throughout the period of 2005/06-2008/09 accounted for domestic use of white wines. The share of the domestic use of quality wines varied during the period, in 2008/09 it reached almost 70%, which is similar to the previous year. During the observed period, the domestic use of table wines decreased and fell from almost 340,000 hectoliters in 2005/06 to 225,000 hectoliters in the market year 2008/09.

### In 2008/09 almost 26 litres of quality wines and 10 litres of table wines per capita

In the market year 2008/09, average consumption of wine per capita in Slovenia amounted to 37 litres, of which 26 litres of quality wines and 10 litres of table wines; since the market year 2005/06, when it amounted to more than 43 liters of wine per capita, it has declined significantly, by almost 15%.

**Tabela 11: Potrošnja vina na prebivalca, Slovenija**

Table 11: Consumption of wine per capita, Slovenia

	2009/10	
<b>I na prebivalca / I per capita</b>		
<b>Vino</b>	<b>37,7</b>	<b>Wine</b>
<b>od tega bela vina</b>	<b>23,9</b>	<b>of which white wines</b>
Vina z zaščiteno označbo porekla	23,7	Wines with protected designation of origin
Vina z zaščitenim geografskim poreklom	10,9	Wines with protected geographical indication
Sortna vina	0,7	Varietal wines
Druga vina	2,4	Other wines

Vir/Source: SURS/SORS

### Več kot 60 % celotne domače potrošnje vina so v tržnem letu 2009/10 predstavljala bela vina

V tržnem letu 2009/10 je domača potrošnja vina znašala 788.000 hektolitrov vina. 63 % od celotne domače potrošnje vina je predstavljala potrošnja belih vin. Skoraj vsa potrošnja vina je bila namenjena za prehrano (98 % v letu 2009/10).

Vsak Slovenec je v tem tržnem letu popil povprečno skoraj 38 litrov vina, od tega skoraj 24 litrov belih vin.

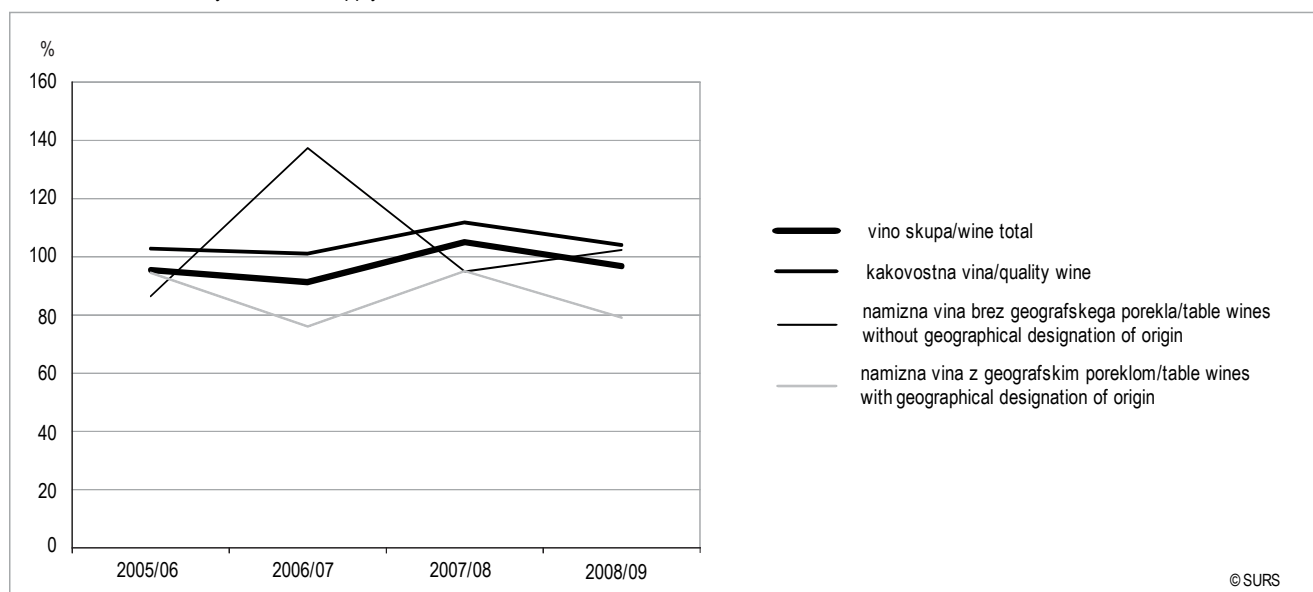
### White wines represented more than 60% of the total domestic use of wine in the market year 2009/10

In the marketing year 2009/10 the domestic use of wine amounted to 788,000 hectolitres. 63% of the total domestic use of wine was represented by the domestic use of white wines. Almost the whole domestic use was meant for human consumption (98% in 2009/10).

Every citizen in Slovenia drank almost 38 litres of wines in this market year, of which almost 24 litres of white wines.

### Grafikon 26: Stopnja samooskrbe v bilanci za vino, Slovenija

Chart 26: Self-sufficiency rate in the supply balance sheet for wine, Slovenia



Vir/Source: SURS/SORS

### Presežek kakovostnih vin, več kot 100-odstotna samooskrba med 2005/06 in 2008/09

Stopnja samooskrbe je bila v opazovanem obdobju visoka in precej stabilna, presegala je 90 %, v 2008/09 je dosegla skoraj 97 %. Za Slovenijo je bil za celotno opazovano obdobje značilen presežek kakovostnih vin; to se kaže v stopnji samooskrbe s kakovostnimi vini; ta je namreč v vseh letih presegala 100 %.

### Surplus of quality wines and more than 100% rate of self-sufficiency in 2005/06 and 2008/09

The rate of self-sufficiency was high and stable during the observation period, it exceeded 90%, and in 2008/09 it reached almost 97%. For Slovenia, the entire observed period was characterized by a surplus of quality wines, which is indicated by the rate of self-sufficiency in quality wines, which in all years exceeded 100%.

### Tabela 12: Stopnja samooskrbe v bilanci za vino, Slovenija

Table 12: Self-sufficiency rate in the supply balance sheet for wine, Slovenia

	2009/10	
	%	
<b>Vino</b>	<b>100,2</b>	<b>Wine</b>
<b>od tega bela vina</b>	<b>99,7</b>	<b>of which of white wines</b>
Vina z zaščiteno označbo porekla	108,7	Wines with protected designation of origin
Vina z zaščitnim geografskim poreklom	86,2	Wines with protected geographical indication
Sortna vina	0,0	Varietal wines
Druga vina	107,6	Other wines

Vir/Source: SURS/SORS

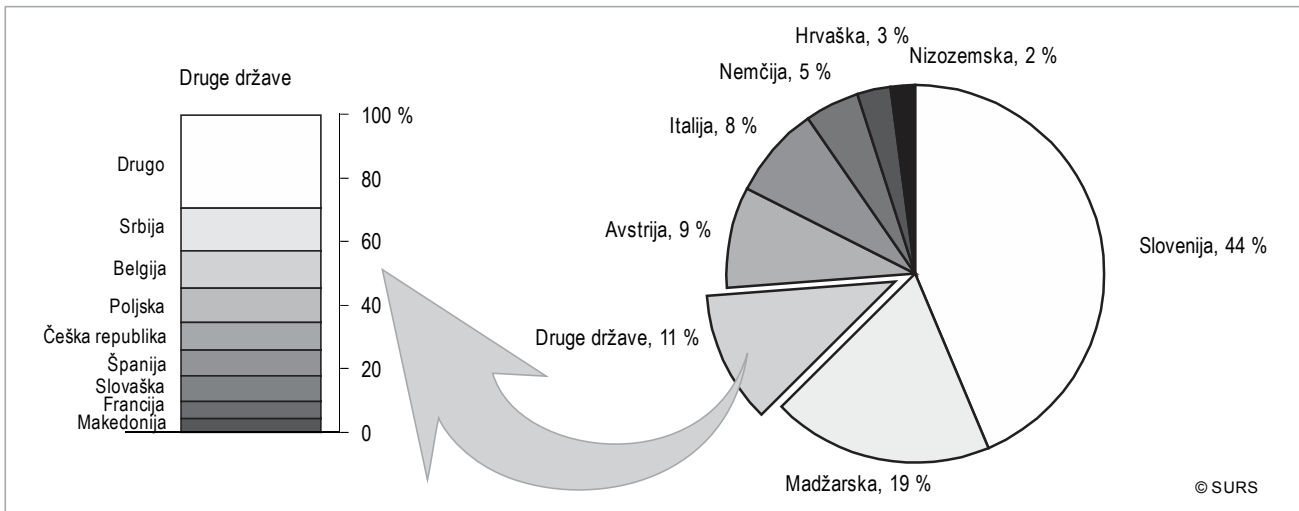
**Stopnja samooskrbe z vinom je v tržnem letu 2009/10 rahlo preseгла 100 %**

V tržnem letu 2009/10 je bil za Slovenijo značilen presežek vin z zaščiteno označbo porekla ter drugih vin, kar se je kazalo v stopnji samooskrbe, ki je tedaj preseğala 100 %.

**Self-sufficiency rate in wine slightly exceeded 100% in 2009/10**

In the 2009/10 market year the surplus of wines with protected designation of origin and other wines was characteristic, which was indicated by the rate of self-sufficiency, which exceeded 100% in this year.

**Grafikon 27: Izvor hrane potrošene v Sloveniji po državah, 2010**  
Chart 27: Origin of food consumed in Slovenia by countries, 2010



Vir/Source: SURS (ocena)/SORS(estimation)

**Pripravljena ocena izvora hrane, potrošene v Sloveniji**

Za pripravo ocene izvora hrane, ki se je v letu 2010 potrošila v Sloveniji, je bil v »hrano« vključen celoten nabor osnovnih ter predelanih proizvodov za: meso, jajca, žita, krompir, zelenjavo, sladkor in riž (povzeto iz nacionalnih bilanc proizvodnje in potrošnje po Eurostat metodologiji). Ocena je bila pripravljena na osnovi razpoložljivih količin domače proizvodnje ter uvoza (po državah porekla blaga) za potrošnje. Količinski podatki zunanje trgovine o predelanih proizvodih so bili preračunani v ekvivalente osnovnega proizvoda. Pri tem so bili uporabljeni isti koeficienti, ki se uporabljajo pri izdelavi bilanc (npr. za preračun testenin v ekvivalent zrnja v bilanci za žita), nato pa so bili podatki agregirani po državah.

Ocena izvora »hrane« za Slovenijo je bila pripravljena na osnovi predpostavk, da se je celotna količina uvožene hrane potrošila doma ter da je vse, kar je Slovenija izvozila, prišlo iz domače proizvodnje. Obenem je bilo predpostavljeno, da se uvožena hrana v enakih razmerjih potroši za različne namene (potrošnja za prehrano, za nadaljnjo predelavo, za industrijo, za krmo).

**Leta 2010 smo iz Madžarske uvozili največjo količino hrane za domačo potrošnje**

Po oceni SURS je bilo v letu 2010 skoraj 44 % potrošene hrane domačega, slovenskega izvora, preostali delež hrane za potrošnje, tj. 56 %, pa je bil uvožen. Nekaj več kot 38 % potrošene hrane je bilo uvožene iz sosednjih držav (Madžarska, Avstrija, Italija, Hrvaška). Od celotne potrošene hrane v letu 2010 je hrana madžarskega izvora predstavljala 19 %, predvsem zaradi uvoza živih živali (govedo, prašiči), mesa in mesnih izdelkov, žit in paprike. Po deležu je sledila Avstrija (9 %), predvsem na račun uvoza prašičev ter prašičjega mesa, trde pšenice, koruze, pšenične moke, zdroba ter krompirja. Iz Italije je bilo uvoženih 8 % v Sloveniji potrošene hrane (zelenjava, testenine, pekarski izdelki in prašičje meso). Nadaljnjih 10 % hrane je bilo nemškega, hrvaškega ali nizozemskega izvora.

**Estimation of the origin of food consumed in Slovenia prepared**

An estimation of the origin of food, which was consumed in Slovenia in 2010, was prepared on the basis of the whole group of primary and processed products for meat, eggs, cereals, potatoes, vegetables, sugar and rice (taken from the national supply balance sheets according to Eurostat methodology). The estimation was prepared on the basis of the available quantities of the domestic production and the imports (according to the country of origin) for domestic use. The quantity external trade data of the processed products were calculated into the equivalents of the primary products. The same coefficients as for the compilation of the supply balance sheet have been used (calculation of pasta into the grain equivalent in the balance sheet for cereals), after the data were aggregated by countries.

Estimation of the origin of food for Slovenia was prepared on the basis of the assumptions that the whole quantity of the imported food was consumed in Slovenia and that the total export from Slovenia was of the domestic origin. At the same time the assumption was made that the imported food was used for different purposes according to the same relations (for human consumption, further processing, industrial use, fodder, etc.).

**In 2010 the largest quantities of food for domestic use were imported from Hungary**

According to SORS's estimates, in 2010 almost 44% of the consumed food was of the domestic, Slovene origin; the remaining 56% of the consumed food was imported. Slightly little more than 38% of the food consumed was imported from the neighbouring countries (Hungary, Austria, Italy and Croatia). Out of the total food consumed in 2010, the food of the Hungarian origin represented 19%, mostly due to the import of live animals (cattle, pigs), meat and meat products, cereals and pepper. By the share, Austria followed with 9%, mostly on account of the import of pigs and pig meat, durum wheat, maize, wheat flour, semolina and potatoes. 8% of the food consumed in Slovenia was imported from Italy (vegetables, pasta, bakery products and pig meat). Further 10% of the food was of German, Croatian or Dutch origin.

**STATISTIČNI ZNAMENJI**

% odstotek  
, decimalna vejica

**MERSKE ENOTE**

hl hektoliter  
kg kilogram  
l liter

**KRATICE**

EU Evropska unija  
KIS Kmetijski inštitut Slovenije  
MKGP Ministrstvo za kmetijstvo, gozdarstvo in prehrano  
SURS Statistični urad Republike Slovenije

**METODOLOŠKA POJASNILA****Viri in metode zbiranja podatkov**

Bilance kmetijskih proizvodov se izdelujejo za koledarsko in tržno leto na podlagi Eurostatove metodologije. Vsi podatki o bilancah, razen o bilanci za vino, se na mednarodnem področju sporočajo neobvezno. Izdelava bilanc po enotni metodologiji je vključena v redno statistiko pri vseh državah članicah EU. Tudi bilance kmetijskih proizvodov za Slovenijo so izdelane po metodoloških priporočilih Eurostata.

Glavni viri podatkov za izdelavo bilanc pri nas so statistike rastlinske pridelave, živalske proizvodnje, zakola, industrijske proizvodnje in zunanje trgovine, tržni informacijski sistem za trg jajc pri Agenciji za kmetijske trge in razvoj podeželja (MKGP), Eurostatovi sezname kod carinske nomenklature in tehničnih koeficientov pretvorbe, ekspertne ocene Kmetijskega inštituta Slovenije ter druge statistične ocene.

**Referenčna obdobja za bilance proizvodnje in potrošnje posameznih kmetijskih proizvodov**

1. 4.–31. 3. Zelenjava po vrstah  
Sadje po vrstah  
1. 7.–30. 6. Žito  
Suhe stročnice  
Krompir, krompirjev škrob  
Zelenjava  
Sadje  
Sladkorna pesa, sladkor, med  
Oljnice, rastlinske maščobe, oljne pogače  
Krma  
1. 8.–31. 7. Vino  
1. 9.–31. 8. Riž  
1. 1.–31. 12. Rastlinske maščobe, predelane maščobe  
Meso  
Mleko in mlečni izdelki  
Jajca

**STATISTICAL SIGNS**

% percentage  
, decimal point (in tables)

**UNITS OF MEASUREMENT**

hl hectolitre  
kg kilogram  
l litre

**ABBREVIATIONS**

EU European Union  
AIS Agricultural Institute of Slovenia  
MAFF Ministry of Agriculture, Forestry and Food  
SORS Statistical Office of the Republic of Slovenia

**METHODOLOGICAL EXPLANATIONS****Sources and methods of data collection**

Supply balance sheets of agricultural products are compiled for the calendar and market year on the basis of Eurostat methodology. All the balance sheets, except the balance sheet for wine, are optionally reported at the international level. The compilation of the supply balance sheets according to the common methodology is included in regular statistics of all EU Member States. According to the Eurostat methodological recommendations, the supply balance sheets are compiled in Slovenia.

The main data sources for the compilation of the balance sheets are crop production statistics, animal production and slaughter statistics, industrial production and external trade data, a market information system on the market of eggs from the Agency for Agricultural Markets and Rural Development (MAFF), Eurostat code lists of the customs nomenclature and technical conversion coefficients, expert opinions of the Agricultural Institute and other statistical estimates.

**The reference period for the supply balance sheets of agricultural products**

1. 4. - 31. 3. Vegetables by type  
Fruit by type  
1. 7. -30. 6. Cereals  
Dried pulses  
Potatoes, potato starch  
Vegetables  
Fruits  
Sugar beet, sugar, honey  
Oilseeds, vegetable fat, oil cake  
Feed  
1. 8. - 31. 7. Wine  
1. 9. - 31. 8. Rice  
1. 1. - 31. 12. Vegetable fat, processed fat  
Meat  
Milk and milk products  
Eggs



## Zajem podatkov

Bilance se lahko nanašajo samo na osnovne proizvode, samo na predelane proizvode ali na osnovne in predelane proizvode skupaj. Če se bilanca nanaša na osnovne in predelane proizvode skupaj, je treba vse proizvode preračunati na isto enoto (praviloma na osnovni proizvod). Bilance proizvodnje in potrošnje kmetijskih proizvodov so pripravljene na osnovi Eurostatovih seznamov kod kombinirane nomenklature carinske tarife, ob upoštevanju tehničnih koeficientov za preračun predelanih proizvodov v ekvivalente.

## Pravna osnova za izdelavo bilanc

Bilanca vina je v Evropski uniji edina, ki je v celoti predpisana in je obvezna za vse države članice. Pravno podlago predstavlja uredba Sveta o ureditvi trga z vinom **Uredba Sveta (EU) št. 1493/1999** in izvedbena uredba Komisije, ki postavlja podrobna pravila glede zbiranja podatkov za spremljanje trga vina, tj. **Uredba Komisije (EU) št. 1282/2001**. Za vse ostale bilance obstajajo Eurostatova metodološka priporočila, poročanje držav članic pa je neobvezno. **Uredba Komisije št. 479/2008**, ki je stopila v veljavo z letom 2009, je postavila novo razdelitev kakovostnih razredov vina.

Splošni koncepti bilanc so določeni z dokumentoma **Dok. ESTAT/CPSA/447** in **Dok. ESTAT/CPSA/459**. **Dok. ESTAT/CPSA/471** dopolnjuje **Dok. ESTAT/CPSA/459** in predlaga Eurostatove roke sporočanja štirih sklopov bilanc. V prvi sklop spadajo nacionalne bilance, ki naj bi jih izdelovale države članice (bilance sladkorja, krompirja, sadja, zelenjave, vina, oljk, oljne repice, pripravljenih maščob in olj ter riža), v drugi sklop bilance, ki bi jih za nacionalno raven izdeloval Eurostat (bilance jajc, mesa, mleka), v tretji sklop bilance, ki naj bi se izdelovale na ravni EU-27 in bi jih pripravil Eurostat (bilance žit, medu, oljnih semen in beljakovinskih proizvodov, suhih stročnic, sončnic, lanu in bombaža), v četrti sklop pa tiste, ki jih ni več treba posredovati Eurostatu (bilance melase, kokosa, živalskih maščob in olj, maščob in olj morskih živali, oreščkov).

## Eurostatova metodološka priporočila za posamezne bilance

**Dok. ASA/PE/635** Priročnik s splošnimi koncepti za izdelavo bilanc proizvodnje in potrošnje kmetijskih proizvodov

**Dok. ASA/PE/636** Priročnik za izdelavo bilance žit

**Dok. ASA/PE/637** Priročnik za izdelavo bilance riža

**Dok. ASA/PE/638** Priročnik za izdelavo bilance suhih stročnic

**Dok. ASA/PE/639** Priročnik za izdelavo bilance krompirja in krompirjevega škroba

**Dok. ASA/PE/640** Priročnik za izdelavo bilance zelenjave

**Dok. ASA/PE/641** Priročnik za izdelavo bilance sadja

**Dok. ASA/PE/642** Priročnik za izdelavo bilance sladkorja in medu

**Dok. ASA/PE/643** Priročnik za izdelavo bilance oljnih semen in oljnic

**Dok. ASA/PE/644** Rev.1 Priročnik za izdelavo bilance vina

## Definicije in pojasnila

**Bilance proizvodnje in potrošnje** kmetijskih proizvodov so informacije o ponudbi in povpraševanju za določen kmetijski pridelek ali skupino pridelkov za določeno obdobje in se nanašajo na državo kot celoto.

## Coverage

Supply balance sheets can relate to the primary products only, to the processed products only or to the primary and processed products together. If the balance sheet relates to the primary and processed products together, all the products have to be converted to the same unit (usually the primary product). Supply balance sheets of agricultural products were prepared on the basis of Eurostat code lists of the combined nomenclature with the technical conversion coefficients of processed products as equivalents.

## The legal basis of the balance

The supply balance sheet for wine is the only one in the European Union, which is fully prescribed and is compulsory for all member states. The legal basis is presented by a council regulation on the organization of the wine market **Council Regulation (EU) No. 1493/1999** and the implementing regulation, which sets out detailed rules concerning the collection of data to monitor the wine market **Commission Regulation (EU) No. 1282/2001**. For all other balance sheets Eurostat methodological recommendations exist and member states' reporting is optional. **The Commission Regulation No. 479/2008**, which came into force with 2009, has set the new distribution of quality classes of wine.

General concepts of the supply balance sheets are specified in the documents **Doc. ESTAT/CPSA/447** and **Doc. ESTAT/CPSA/459**. **Doc. ESTAT/CPSA/471** complements **Doc. ESTAT/CPSA/459** and proposes Eurostat deadlines for four sets of supply balance sheets. The first set includes the balance sheets for sugar, potatoes, fruits, vegetables, wine, olives, rape, fats and oils and rice which have to be compiled by Member States, the second includes the balance sheets for eggs, meat and milk which have to be compiled at the national level by Eurostat, the third set includes balance sheets which would be prepared at the EU-27 level and could be prepared by Eurostat (the balance sheets for cereals, honey, oil seeds and protein products, dried pulses, sunflower, flax and cotton), and the fourth set is the set of supply balance sheets that no longer need to be transmitted to Eurostat (the balance sheets for molasses, coconut oil, animal fats and oils, fats and oils of marine animals, shells).

## Eurostat methodological recommendations for individual balance sheets

**Doc. ASA/PE/635** Handbook with the general concept of the supply balance sheets of agricultural products

**Doc. ASA/PE/636** Guide for compilation of cereals balance sheet

**Doc. ASA/PE/637** Guide for compilation of rice balance sheet

**Doc. ASA/PE/638** Guide for compilation of dried pulses balance sheet

**Doc. ASA/PE/639** Guide for compilation of potato and potato starch balance sheet

**Doc. ASA/PE/640** Guide for compilation of the vegetables balance sheet

**Doc. ASA/PE/641** Guide for compilation of the fruit balance sheet

**Doc. ASA/PE/642** Guide for compilation of the sugar and honey balance sheet

**Doc. ASA/PE/643** Guide for compilation of the oil and oil seeds balance sheet

**Doc. ASA/PE/644** Rev.1 Guide for compilation of wine balance sheet

## Definitions and explanations

**Supply balance sheets** of agricultural products are information on supply and demand for an agricultural product or group of products for a limited time series that relate to the country as a whole. The supply



Bilance se glede na to, iz katerih podatkov se pripravijo, delijo na začasne in končne. Predstavljajo sintezo velikega števila različnih statističnih in drugih podatkov s področja kmetijstva in živilske industrije.

**Bilance se glede na stopnjo predelave** lahko nanašajo na osnovne proizvode, na predelane proizvode ali na osnovne in predelane proizvode skupaj. Če se bilanca nanaša na osnovne in predelane proizvode, je treba vse proizvode preračunati na isto enoto (praviloma osnovni proizvod). Za preračun predelanih proizvodov v osnovni proizvod (in obratno) se uporabljajo tehnični koeficienti.

**Osnovni proizvod** je proizvod v svojem začetnem stanju (npr. žito, krompir, jajca ipd.). Definirani so s Standardno klasifikacijo dejavnosti (SKD) in opisani v okviru metodoloških pojasnil za posamezna področja statistike (npr. statistika rastlinske pridelave). Količine osnovnega proizvoda se izražajo v teži standardnega proizvoda.

**Predelani proizvod** je rezultat predelave enega izmed osnovnih proizvodov. Stopenj predelave je lahko več (npr. osnovni proizvod – kuruza; prva stopnja predelave – škrob; druga stopnja predelave – glukoza; tretja stopnja predelave – izoglukoza). Stranski proizvodi, ki nastanejo pri predelavi osnovnega proizvoda (npr. otrobi), se v bilanci praviloma ne upoštevajo.

**Referenčno obdobje** za izdelavo bilanc proizvodnje in potrošnje kmetijskih proizvodov zajema 12 zaporednih mesecev. Za živalske proizvode se to obdobje ujema s koledarskim letom, za rastlinske proizvode, razen za rastlinske maščobe, pa se to obdobje ujema s tržnim letom; to pa ni enako za vse pridelke. Bilance proizvodnje in potrošnje kmetijskih proizvodov delimo glede na referenčno obdobje, in sicer na koledarske in tržne.

**Proizvodnja** vključuje vse uporabne količine, proizvedene v državi v določenem referenčnem obdobju, ne glede na vrsto porabe. V rastlinski pridelavi se kot proizvodnja upošteva pridelek, pospravljen v koledarskem letu, v katerem se začne referenčno obdobje. Nepospravljeni pridelek in izgube ob pravilu ter ob prevozu do gospodarstva se ne upoštevajo kot proizvodnja.

**Skupna proizvodnja** vina vključuje proizvodnjo vin in mošta, namenjenega za pridelavo vina. Proizvodnja za druge namene je zanemarljiva. Razčlenitev po kakovosti poteka v skladu z nacionalno zakonodajo. Vsa vina, proizvedena po kmetijah, se štejejo za namizna vina. **Uporabna proizvodnja** obsega pridelek (bruto proizvodnja, zmanjšana za izgube pridelka) grozdja (deli se po barvi) v koledarskem letu, v katerem se začne referenčno obdobje, ki se nato pretvori v vino z uporabo tehničnih stopenj ekstrakcije. **Domača industrijska potrošnja** zajema količine destiliranega vina za proizvodnjo etilnega alkohola in vino, ki se uporablja pri proizvodnji kisa. **Predelava** vključuje količine vina, namenjene za proizvodnjo vermuta, in aromatična vina. **Potrošnja za prehrano** vključuje količino vin in mošta za prehrano ljudi. **Bilanca za vina je tudi edina izmed prikazanih bilanc, ki se pripravlja za tržno, to je vinsko leto.**

**Zunanja trgovina** vključuje uvoz in izvoz proizvodov po Kombinirani nomenklaturi carinske tarife (KN), in sicer ločeno za promet med drugimi državami in državami članicami EU in za promet z drugimi državami (zunaj EU). Seznam kod KN in tehnični koeficienti za preračun v ustrezne enote (ekvivalente) so določeni za vsako bilanco posebej.

**Spremembe v zalogah** se nanašajo na vse zaloge, ne glede na to, kje se te nahajajo. Predstavljajo razliko med zalogami na koncu in zalogami na začetku referenčnega obdobja. **Začetne zaloge** so definirane kot neporabljene količine proizvodov iz proizvodnje v predhodnem referenčnem obdobju, ki so na zalogi na prvi dan referenčnega obdobja. **Končne zaloge** so zaloge na zadnji dan referenčnega obdobja.

balance sheets are divided into the provisional and final, according to the data on which they are prepared. They present a synthesis of a wide variety of statistical and other information in the fields of agriculture and food industry.

As regards **the level of processing, balances** may relate to the primary products, to the processed products, or to primary and processed products together. If the balance sheet relates to the primary and processed products, all products have to be converted to the same unit (usually the primary product). For the conversion of processed products in the primary product (and vice versa) the technical coefficients are used.

**Primary product** is a product in its initial state (e.g. cereals, potatoes, eggs, etc.). Primary products are defined by the Standard Classification of Activities and described in the context of methodological explanations for specific areas of statistics (e.g. harvest statistics). Quantities of primary products are expressed in the weight of a standard product.

**Processed product** is a result of processing of one of the primary products. Different levels of processing exist (e.g. primary product - maize; the first processing stage - starch; the second processing stage - glucose; the third processing stage - isoglucose). By-products are results from the processing of basic products (e.g. bran); they are not included in the balance sheet.

**The reference period** for the compilation of the balance sheets of agricultural products covers 12 consecutive months. For animal products, this period coincides with the calendar year, for crop products, except for vegetable fat, this period coincides with the market year, and this is not the same for all crops. Supply balance sheets of agricultural products are divided according to the reference period into the calendar and the market balance sheets.

**Production** includes all the useful quantities produced in the country in a given reference period, irrespective of the type of consumption. In crop production it means harvested yield in the calendar year covered by the start of the reference period. Non-harvested yield and losses at harvesting and transport are not considered as production.

**Total domestic production** of wine includes wines and must intended for the production of wine. **Production for use**, other than wine, is negligible. Breakdown of quality is conducted in accordance with national legislation. All wines produced from the farms are considered to be table wines. **Usable production** consists of yield (gross output minus the loss of yield) of grapes (divided by colour) in a calendar year, which represents the beginning of the reference period, which is then converted into wine by using technical rates of extraction. **Industrial domestic use** includes quantities of wine distilled for the production of ethyl alcohol and wine used in the manufacture of vinegar. **Processing** includes quantities of wine intended for the production of vermouth and aromatic wines. **Human consumption** includes quantities of wine and must for human consumption. **The balance sheet for wine is the only shown supply balance sheet compiled for the market, wine year.**

**External trade** includes import and export of products in accordance with the combined nomenclature (CN), separately for the transport between other countries and EU Member States and for the transport with other countries (outside the EU). The code lists and technical conversion coefficients for the calculation to the appropriate units (equivalents) are set separately for each balance sheet.

**Changes in stocks** should refer to all stocks, regardless of where they are located. It means the difference between stocks at the end and stocks at the beginning of the reference period. **Initial stocks** are defined as quantities of unused products from the production of the previous reference period, which are held on the first day of the reference period. **Ending stocks** are stocks on the last day of the reference period. As a

Praviloma je treba v bilancah upoštevati zaloge vseh tistih proizvodov, ki se upoštevajo tudi v zunanji trgovini. Zaloge na ravni trgovine na drobno in končnih porabnikov (gospodinjstva) se ne upoštevajo (upoštevajo se v različnih oblikah domače porabe).

**Domača potrošnja** je sestavljena; vključuje tudi **semena ali jajca**, ki se porabijo za naslednji proizvodni cikel, **izgube**, ki so nastale med skladiščenjem, med prevozom, v predelavi in pripravi za trg, vključno s količinami, ki so bile umaknjene s trga, **krmo**, namenjeno neposredno za prehrano živali ali za proizvodnjo **krmil**, **industrijsko potrošnje** za proizvodnjo proizvodov za neprehranske namene, **predelano** (količine osnovnega proizvoda, porabljene za nadaljnjo predelavo) ter **potrošnje za prehrano** v predelani ali nepredelani obliki; zadnja zajema tudi izgube in spremembe v zalogah na ravni trgovine na drobno in končnih potrošnikov.

**Stopnja samooskrbe** kaže, v kolikšni meri domača proizvodnja (iz domačega osnovnega proizvoda) zadošča za domačo potrošnje (potrošnje za krmo, za prehrano in za potrošnje v industriji).

**Potrošnja na prebivalca** je izračunana z razmerjem potrošnje za prehrano in števila prebivalcev. Za izračun se uporabljajo podatki o številu prebivalcev iz uradnih statističnih virov. V bilancah za koledarsko leto je upoštevano število prebivalcev na dan 30. 6., v bilancah za tržno leto pa na dan 31. 12. Podatki se nanašajo na prebivalce, ki običajno živijo v državi. Upoštevajo se tudi osebe, ki sicer živijo v državi, a so začasno odsotne, medtem ko se tujci, ki v državi živijo začasno, ne upoštevajo.

rule, in the supply balance sheets stocks of those products which are taken into account in external trade have to be taken into account. Stocks in retail trade and end consumers (households) are not included (they are included in the various forms of domestic use).

**Domestic use** consists also of **seeds or eggs** which are used for the next production cycle, the **losses** that have occurred during storage, during transport, processing and market preparation, including the amounts that were withdrawn from the market, **feed** intended directly for animal feed or for production materials, **industrial use** for the production of products for uses other than for human consumption (the quantities of basic products used for further processing) and **human consumption** in processed or unprocessed form; the latter also includes losses and changes in stocks at the level of trade retailers and end consumers.

**Self-sufficiency** indicates the extent to which the domestic production (from domestic primary product) covers the domestic use (domestic use of feed, food and consumption in industry).

**Consumption per capita** is calculated by the ratio of domestic consumption of food and population. For the calculation the data on the population from official statistical sources are used. In the calendar supply balance sheets the number of population on 30 June is used and in the market supply balance sheets the number of population on 31 December is used. Data refer to the people who usually reside in the country. People who otherwise live in the country but are temporarily absent are also taken into account, while foreigners who are temporarily living in the country are not included.

**Objavljanje rezultatov****Letno:**

- Rastlinske in živalske bilance za koledarsko leto, Slovenija - končni podatki. *Prva objava*
- Končna bilanca za vino za tržno leto, Slovenija. *Prva objava*
- Bilance proizvodnje in potrošnje kmetijskih proizvodov, Slovenija – končni podatki. *Statistične informacije*
- *Statistični letopis Republike Slovenije*

**Data publishing****Annually:**

- Crop and animal supply balance sheets for the calendar year, Slovenia - final data. *First release*
- Final supply balance sheet for wine for the market year, Slovenia. *First Release*
- Supply balance sheets of agricultural products, Slovenia – final data. *Rapid Reports*
- *Statistical Yearbook of the Republic of Slovenia*

Avtorica: Špela Gale

Author: Špela Gale

Publikacija je na voljo na spletnem naslovu [www.stat.si/pub.asp](http://www.stat.si/pub.asp)

Informacije daje Informacijsko središče:

tel. (01) 241 64 04

elektronska pošta [info.stat@gov.si](mailto:info.stat@gov.si)Access to the publication at: [www.stat.si/eng/pub.asp](http://www.stat.si/eng/pub.asp)

Information: Information Centre

phone: + 386 1 241 64 04

e-mail: [info.stat@gov.si](mailto:info.stat@gov.si)