



Slovenian Butterflies 1

Field Guide for butterfly identification

The **European Butterfly Monitoring Scheme (eBMS)** aims to collect data to promote the monitoring and conservation of this group of insects. The eBMS network relies on thousands of volunteers who systematically collect field data following a defined methodology.

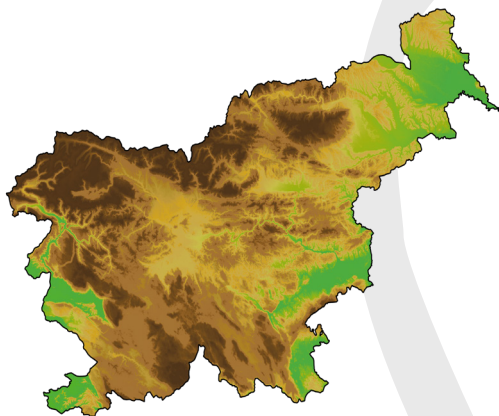
This Field Guide aims to facilitate the task of field identification of **100 most common Slovenian butterfly species**. This guide also serves as a support tool for those involved in the monitoring of butterflies through the methodologies standardized by eBMS for all of Europe.

*This Field Guide can be found and download on the eBMS website:
www.butterfly-monitoring.net/bms-materials*

Counting butterflies will help to protect them!

Slovenian butterflies

The species diversity of butterflies in Slovenia is extremely large, given the size of the country. A total of **181 species of butterflies** live in Slovenia. Some species are specialized and are found only in certain parts of the country, while some are widespread and can be found almost everywhere, even in the home garden. This brochure presents 100 species of butterflies, which are easily recognizable and/or are widespread in Slovenia.

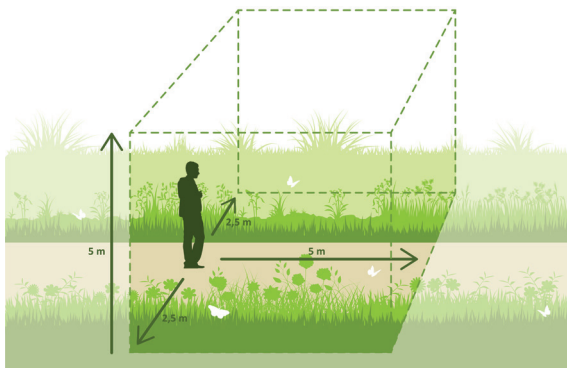


Butterfly monitoring

The transect method is used to monitor the condition of butterflies along a fixed route. Following the selected route, the recorder walks at a slow pace and records all specimens of butterflies in an imaginary box, 2.5 m to each side and 5 m in front and above you. The monitoring transects are walked once every one or two weeks (preferably), in sunny weather and in the warmest part of the day, at a minimum temperature of 15 °C.

You can also count butterflies with the app **ButterflyCount**, doing 15-minute Counts at any location while the GPS follows you.

If you want to join the butterfly monitoring network, visit www.butterfly-monitoring.net or the website of the Society for the Study and Conservation of Butterflies of Slovenia www.facebook.com/metulji.




How to use this Field Guide

This identification guide presents 100 easily recognizable or widespread species of butterflies of Slovenia, some of which can be found in gardens or urban areas. The species are arranged systematically by families and together with similar species, which facilitates their identification.

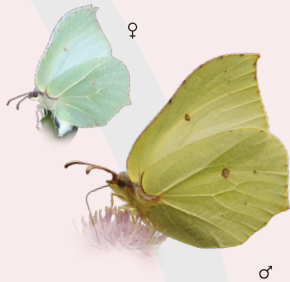
However, the guide does not present all 181 species of diurnal butterflies occurring in Slovenia, as certain species are so specialized that they are found only in certain areas, for example in high mountains. If you come across a butterfly that you are in doubt about when determining the species or you do not find it in this brochure, you can use the follow-up identification guide, where an additional 63 species are presented (Slovenia Butterflies 2).


In most species, the underside and upper side of the wings are shown, while some species with pronounced sexual dimorphism, males and females are shown separately. Each species is named with the English and scientific name. For species whose names are colored red, the exact species determination must be checked in the follow-up identification guide, which shows other similar species. The bars below each species show the months when they occur in red, and the butterfly symbols show approximate size (large, medium or small). Endangered and Vulnerable species are shown after the species name. The features to pay special attention for determining the species are highlighted and marked with arrows and circles.



Black Veined White
Aporia crataegi 

J	F	M	A	M	J	J	A	S	O	N	D
---	---	---	---	---	---	---	---	---	---	---	---



Brimstone
Gonepteryx rhamni 

J	F	M	A	M	J	J	A	S	O	N	D
---	---	---	---	---	---	---	---	---	---	---	---



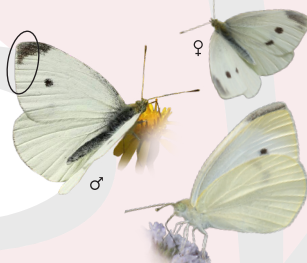
Clouded Yellow
Colias crocea 


J	F	M	A	M	J	J	A	S	O	N	D
---	---	---	---	---	---	---	---	---	---	---	---



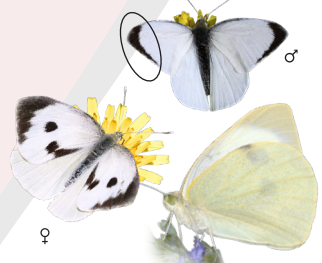
Green Veined White
Pieris napi 

J	F	M	A	M	J	J	A	S	O	N	D
---	---	---	---	---	---	---	---	---	---	---	---



Small White
Pieris rapae 

J	F	M	A	M	J	J	A	S	O	N	D
---	---	---	---	---	---	---	---	---	---	---	---



Large White
Pieris brassicae 


J	F	M	A	M	J	J	A	S	O	N	D
---	---	---	---	---	---	---	---	---	---	---	---



Orange Tip
Anthocharis cardamines 


J	F	M	A	M	J	J	A	S	O	N	D
---	---	---	---	---	---	---	---	---	---	---	---



Bath White
Pontia edusa 

J	F	M	A	M	J	J	A	S	O	N	D
---	---	---	---	---	---	---	---	---	---	---	---



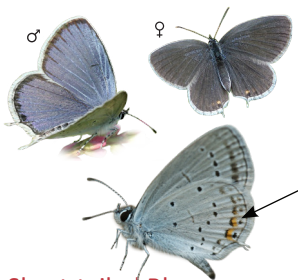
Real's/Cryptic Wood White
Leptidea sinapis/juvernica 

J	F	M	A	M	J	J	A	S	O	N	D
---	---	---	---	---	---	---	---	---	---	---	---



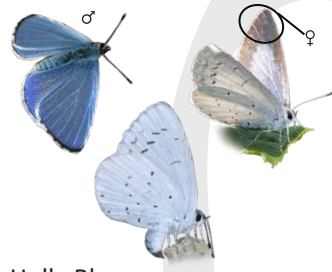
Small Blue
Cupido minimus

J	F	M	A	M	J	J	A	S	O	N	D
---	---	---	---	---	---	---	---	---	---	---	---



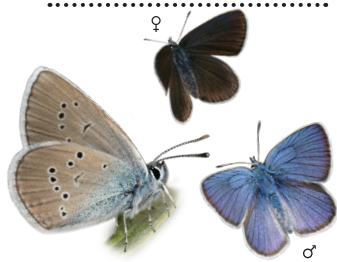
Short-tailed Blue
Cupido argiades

J	F	M	A	M	J	J	A	S	O	N	D
---	---	---	---	---	---	---	---	---	---	---	---



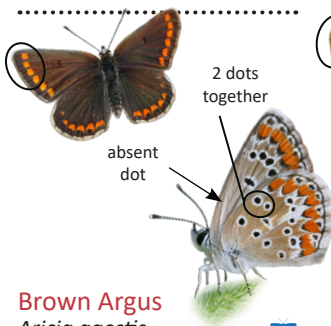
Holly Blue
Celastrina argiolus

J	F	M	A	M	J	J	A	S	O	N	D
---	---	---	---	---	---	---	---	---	---	---	---



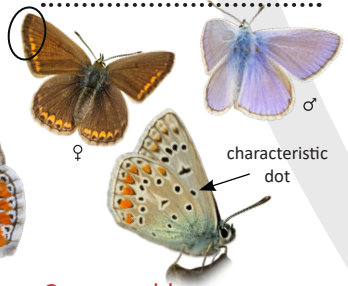
Mazarine Blue
Cyaniris semiargus

J	F	M	A	M	J	J	A	S	O	N	D
---	---	---	---	---	---	---	---	---	---	---	---



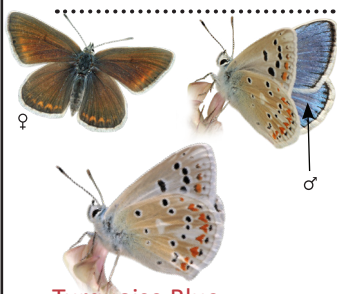
Brown Argus
Aricia agestis

J	F	M	A	M	J	J	A	S	O	N	D
---	---	---	---	---	---	---	---	---	---	---	---



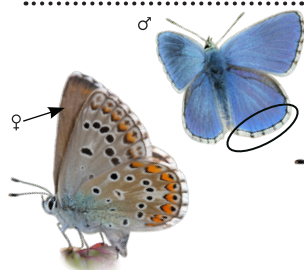
Common blue
Polyommatus icarus

J	F	M	A	M	J	J	A	S	O	N	D
---	---	---	---	---	---	---	---	---	---	---	---



Turquoise Blue
Polyommatus dorylas

J	F	M	A	M	J	J	A	S	O	N	D
---	---	---	---	---	---	---	---	---	---	---	---



Adonis Blue
Lysandra bellargus

J	F	M	A	M	J	J	A	S	O	N	D
---	---	---	---	---	---	---	---	---	---	---	---



Chalk Hill Blue
Lysandra coridon

J	F	M	A	M	J	J	A	S	O	N	D
---	---	---	---	---	---	---	---	---	---	---	---



Silver Studded Blue
Plebejus argus

J	F	M	A	M	J	J	A	S	O	N	D
---	---	---	---	---	---	---	---	---	---	---	---



Scarce Large Blue
Phengaris teleius

J	F	M	A	M	J	J	A	S	O	N	D
---	---	---	---	---	---	---	---	---	---	---	---



Purple Hairstreak
Favonius quercus

J	F	M	A	M	J	J	A	S	O	N	D
---	---	---	---	---	---	---	---	---	---	---	---



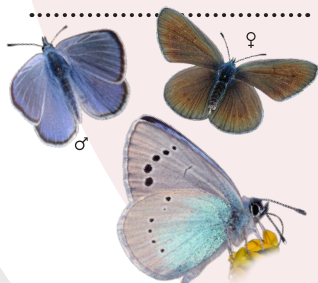
Green Hairstreak
Callophrys rubi

J	F	M	A	M	J	J	A	S	O	N	D
---	---	---	---	---	---	---	---	---	---	---	---



Blue Spot Hairstreak
Satyrium spini

J	F	M	A	M	J	J	A	S	O	N	D
---	---	---	---	---	---	---	---	---	---	---	---



Green Underside Blue
Glaucopsyche alexis

J	F	M	A	M	J	J	A	S	O	N	D
---	---	---	---	---	---	---	---	---	---	---	---



Chequered Blue
Scolitantides orion

J	F	M	A	M	J	J	A	S	O	N	D
---	---	---	---	---	---	---	---	---	---	---	---



Eastern Baton Blue
Pseudophilotes vicrama

J	F	M	A	M	J	J	A	S	O	N	D
---	---	---	---	---	---	---	---	---	---	---	---



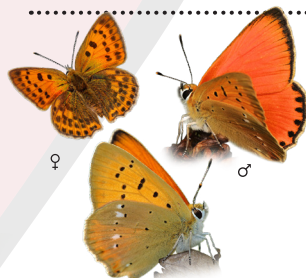
Small Copper
Lycaena phlaeas

J	F	M	A	M	J	J	A	S	O	N	D
---	---	---	---	---	---	---	---	---	---	---	---



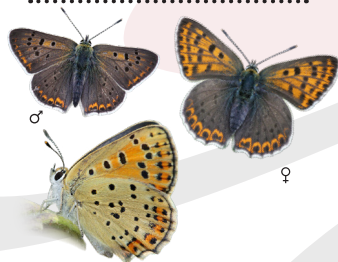
Large Copper
Lycaena dispar

J	F	M	A	M	J	J	A	S	O	N	D
---	---	---	---	---	---	---	---	---	---	---	---



Scarce Copper
Lycaena virgaureae

J	F	M	A	M	J	J	A	S	O	N	D
---	---	---	---	---	---	---	---	---	---	---	---



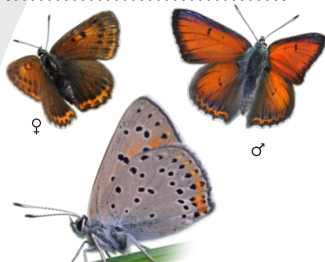
Sooty Copper
Lycaena tityrus

J	F	M	A	M	J	J	A	S	O	N	D
---	---	---	---	---	---	---	---	---	---	---	---



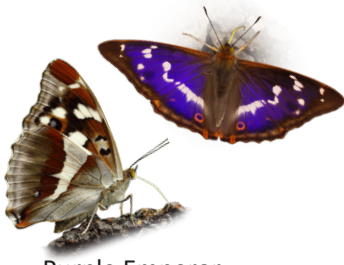
Purple Shot Copper
Lycaena alciphron

J	F	M	A	M	J	J	A	S	O	N	D
---	---	---	---	---	---	---	---	---	---	---	---



Purple Edged Copper
Lycaena hippothoe

J	F	M	A	M	J	J	A	S	O	N	D
---	---	---	---	---	---	---	---	---	---	---	---



Purple Emperor
Apatura iris



J F M A M J J A S O N D



Lesser Purple Emperor
Apatura ilia



J F M A M J J A S O N D



White Admiral
Limenitis camilla



J F M A M J J A S O N D



Hungarian Glider
Neptis rivularis



J F M A M J J A S O N D



Southern White Admiral
Limenitis reducta



J F M A M J J A S O N D



Poplar Admiral
Limenitis populi



J F M A M J J A S O N D



Common Glider
Neptis sappho



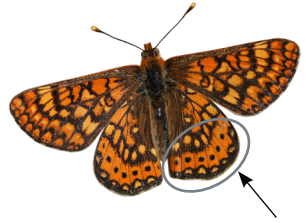
J F M A M J J A S O N D



Scarce Fritillary
Euphydryas maturna



J F M A M J J A S O N D



Marsh Fritillary
Euphydryas aurinia



J F M A M J J A S O N D



Nettle Tree Butterfly
Libythea celtis



J F M A M J J A S O N D



Comma
Polygonia c-album



J F M A M J J A S O N D



Glanville Fritillary
Melitaea cinxia



J F M A M J J A S O N D



Silver Washed Fritillary
Argynnis paphia

J F M A M J J A S O N D



Dark Green Fritillary
Speyeria aglaja

J F M A M J J A S O N D



High Brown Fritillary
Fabriciana adippe

J F M A M J J A S O N D



Queen of Spain Fritillary
Issoria lathonia

J F M A M J J A S O N D



Violet Fritillary
Boloria dia

J F M A M J J A S O N D



Pearl Bordered Fritillary
Boloria euphrosyne

J F M A M J J A S O N D



Twin Spot Fritillary
Brenthis hecate

J F M A M J J A S O N D



Lesser Marbled Fritillary
Brenthis ino

J F M A M J J A S O N D



Marbled Fritillary
Brenthis daphne

J F M A M J J A S O N D



Knapweed Fritillary
Melitaea phoebe

J F M A M J J A S O N D



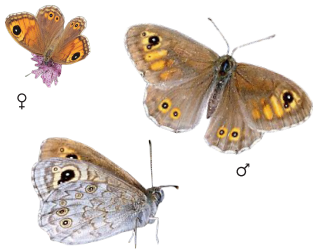
Spotted Fritillary
Melitaea didyma

J F M A M J J A S O N D



Heath Fritillary
Melitaea athalia

J F M A M J J A S O N D



Large Wall Brown
Lasiommata maera

J	F	M	A	M	J	J	A	S	O	N	D
---	---	---	---	---	---	---	---	---	---	---	---



Wall Brown
Lasiommata megera

J	F	M	A	M	J	J	A	S	O	N	D
---	---	---	---	---	---	---	---	---	---	---	---



Speckled Wood
Pararge aegeria

J	F	M	A	M	J	J	A	S	O	N	D
---	---	---	---	---	---	---	---	---	---	---	---



Small Heath
Coenonympha pamphilus

J	F	M	A	M	J	J	A	S	O	N	D
---	---	---	---	---	---	---	---	---	---	---	---



Chestnut Heath
Coenonympha glycerion

J	F	M	A	M	J	J	A	S	O	N	D
---	---	---	---	---	---	---	---	---	---	---	---



Pearly Heath
Coenonympha arcania

J	F	M	A	M	J	J	A	S	O	N	D
---	---	---	---	---	---	---	---	---	---	---	---



Gatekeeper
Pyronia tithonus

J	F	M	A	M	J	J	A	S	O	N	D
---	---	---	---	---	---	---	---	---	---	---	---



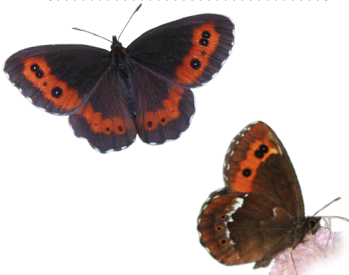
Meadow Brown
Maniola jurtina

J	F	M	A	M	J	J	A	S	O	N	D
---	---	---	---	---	---	---	---	---	---	---	---



Woodland Ringlet
Erebia medusa

J	F	M	A	M	J	J	A	S	O	N	D
---	---	---	---	---	---	---	---	---	---	---	---



Arran Brown
Erebia ligea

J	F	M	A	M	J	J	A	S	O	N	D
---	---	---	---	---	---	---	---	---	---	---	---



Large Ringlet
Erebia euryale

J	F	M	A	M	J	J	A	S	O	N	D
---	---	---	---	---	---	---	---	---	---	---	---



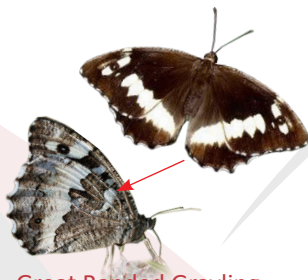
Scotch Argus
Erebia aethiops

J	F	M	A	M	J	J	A	S	O	N	D
---	---	---	---	---	---	---	---	---	---	---	---



Woodland Grayling
Hipparchia fagi

J	F	M	A	M	J	J	A	S	O	N	D
---	---	---	---	---	---	---	---	---	---	---	---



Great Banded Grayling
Brintesia circe

J	F	M	A	M	J	J	A	S	O	N	D
---	---	---	---	---	---	---	---	---	---	---	---



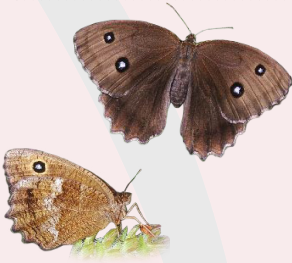
Marbled White
Melanargia galathea

J	F	M	A	M	J	J	A	S	O	N	D
---	---	---	---	---	---	---	---	---	---	---	---



Great Sooty Satyr
Satyrus ferula

J	F	M	A	M	J	J	A	S	O	N	D
---	---	---	---	---	---	---	---	---	---	---	---



Dryad
Minois dryas

J	F	M	A	M	J	J	A	S	O	N	D
---	---	---	---	---	---	---	---	---	---	---	---



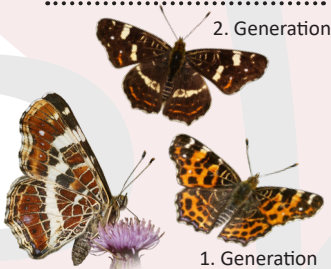
False Grayling
Arethusana arethusa

J	F	M	A	M	J	J	A	S	O	N	D
---	---	---	---	---	---	---	---	---	---	---	---



Woodland Brown
Lopinga achine

J	F	M	A	M	J	J	A	S	O	N	D
---	---	---	---	---	---	---	---	---	---	---	---



Map
Araschnia levana

J	F	M	A	M	J	J	A	S	O	N	D
---	---	---	---	---	---	---	---	---	---	---	---



Small Tortoiseshell
Aglais urticae

J	F	M	A	M	J	J	A	S	O	N	D
---	---	---	---	---	---	---	---	---	---	---	---



Ringlet
Aphantopus hyperantus

J	F	M	A	M	J	J	A	S	O	N	D
---	---	---	---	---	---	---	---	---	---	---	---



Camberwell Beauty
Nymphalis antiopa

J	F	M	A	M	J	J	A	S	O	N	D
---	---	---	---	---	---	---	---	---	---	---	---



Large Tortoiseshell
Nymphalis polychloros

J	F	M	A	M	J	J	A	S	O	N	D
---	---	---	---	---	---	---	---	---	---	---	---

NYMPHALIDAE



Admiral
Vanessa atalanta



J	F	M	A	M	J	J	A	S	O	N	D
---	---	---	---	---	---	---	---	---	---	---	---



Painted Lady
Vanessa cardui



J	F	M	A	M	J	J	A	S	O	N	D
---	---	---	---	---	---	---	---	---	---	---	---



European Peacock
Aglais io



J	F	M	A	M	J	J	A	S	O	N	D
---	---	---	---	---	---	---	---	---	---	---	---

PAPILIONIDAE - SWALLOWTAILS



Apollo
Parnassius apollo



J	F	M	A	M	J	J	A	S	O	N	D
---	---	---	---	---	---	---	---	---	---	---	---



Clouded Apollo
Parnassius mnemosyne



J	F	M	A	M	J	J	A	S	O	N	D
---	---	---	---	---	---	---	---	---	---	---	---



Swallowtail
Papilio machaon



J	F	M	A	M	J	J	A	S	O	N	D
---	---	---	---	---	---	---	---	---	---	---	---



Scarce Swallowtail
Iphiclydes podalirius



J	F	M	A	M	J	J	A	S	O	N	D
---	---	---	---	---	---	---	---	---	---	---	---



Southern Festoon
Zerynthia polyxena



J	F	M	A	M	J	J	A	S	O	N	D
---	---	---	---	---	---	---	---	---	---	---	---

METALMARKS



Duke of Burgundy
Hamearis lucina



J	F	M	A	M	J	J	A	S	O	N	D
---	---	---	---	---	---	---	---	---	---	---	---

RIODINIDAE



Dingy Skipper
Erynnis tages

J F M A M J J A S O N D



Mallow Skipper
Carcharodus alceae

J F M A M J J A S O N D



Grizzled Skipper
Pyrgus malvae

J F M A M J J A S O N D



Obethur's Grizzled Skipper ✓
Pyrgus armoricanus

J F M A M J J A S O N D



Red Underwing Skipper ✓
Spialia sertorius

J F M A M J J A S O N D



Large Chequered Skipper
Heteropterus morpheus

J F M A M J J A S O N D



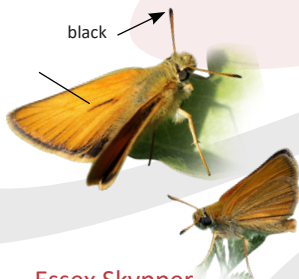
Chequered Skipper
Carterocephalus palaemon

J F M A M J J A S O N D



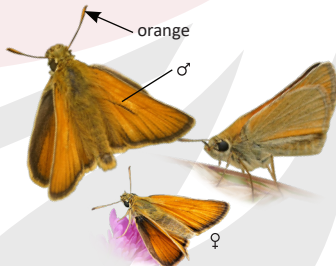
Silver Spotted Skipper
Hesperia comma

J F M A M J J A S O N D



Essex Skipper
Thymelicus lineola

J F M A M J J A S O N D



Small Skipper
Thymelicus sylvestris

J F M A M J J A S O N D



Large Skipper
Ochlodes sylvanus

J F M A M J J A S O N D

Butterfly Conservation Europe and the UK Centre for Ecology and Hydrology (UKCEH) formed the European Butterfly Monitoring Scheme (eBMS) to bring together data from different Butterfly Monitoring Schemes of Europe. All member countries share their data annually to the eBMS database, to analyse and produce the population trends of the European butterfly species and European Butterfly Indicators, which provide an expert basis for further action in the protection of butterflies and their habitats

Visit the eBMS website, www.butterfly-monitoring.net to find out more information about butterfly monitoring and how to submit your butterfly data. If you would like to participate in monitoring butterflies in Slovenia, contact the Society for the Study and Conservation of Slovenian Butterflies (DPOMS) by email: info.metulji@gmail.com or in Facebook: www.facebook.com/metulji. DPOMS includes members who are united by an interest in butterflies. We deal with all butterflies in Slovenia, especially their distribution and ecology, as well as with the promotion of butterflies among the general public. You are invited to join us!

This guide was funded by the ABE project (Assessing Butterflies in Europe), a European pilot project.

Authors: Cristina G. Sevilleja (ABLE project officer), dr. Rudi Verovnik and Luka Šturm (University of Ljubljana, Biotechnical faculty) and Barbara Zakšek (Center for Cartography of Fauna and Flora, CKFF)

Photography: Luka Šturm, dr. Rudi Verovnik, Barbara Zakšek, Primož Glogovčan in Nika Kogovšek; Paolo Mazzei, Marco Bonifacino, Raniero Panfili and Daniel Morel (www.leps.it); Izabella Dziekanska, Marcin Sielezniew, Albert Vliegenthart and Chris van Swaay.

Graphic design: Eveline van der Jagt

Publisher: Društvo za proučevanje in ohranjanje metuljev Slovenije (DPOMS), 2020. Electronic edition

ABLE - Assessing Butterflies in Europe

eBMS - European Butterfly Monitoring Scheme

Conservation status in Slovenia (Red List):




 Vulnerable  Endangered

The names of butterflies in red color mean there are similar species that you can confuse for identification. To check similar species check the follow-up key (Slovenian Butterflies 2).

Flight period: months when butterflies are seen

J F M A M J J A S O N D

Butterfly size:

 Small  Medium  Large

Sex:

♀ Female ♂ Male

Symbols:

→ ○ Specific characteristics to identify the species

A catalog record of the publication (CIP) was prepared at the National and University Library in Ljubljana
COBISS.SI-ID 54419971 ISBN 978-961-95310-1-3 (pdf)

