

ESTIMATION OF MAXIMUM ANNUAL DISCHARGES BY FREQUENCY ANALYSIS WITH FOUR PROBABILITY DISTRIBUTIONS IN CASE OF NON-HOMOGENEOUS TIME SERIES (KAZANI KARST SPRING IN REPUBLIC OF MACEDONIA)

OCENA MAKSIMALNIH LETNIH PRETOKOV S FREKVENČNO ANALIZO S ŠTIRIMI VERJETNOSTNIMI PORAZDELITVAMI V PRIMERU NEHOMOGENIH ČASOVNIH SERIJ (KRAŠKI IZVIR KAZANI V REPUBLIKI MAKEDONIJI)

Ivan RADEVSKI¹, Svemir GORIN¹, Olgica DIMITROVSKA¹, Ivica MILEVSKI¹,
Biljana APOSTOLOVSKA-TOSHEVSKA¹, Milena TALESKA¹ & Vladimir ZLATANOSKI¹

Abstract

UDC 911.2:551.44:556(495.6)
556.36:556.16(495.6)

Ivan Radevski, Svemir Gorin, Olgica Dimitrovska, Ivica Milevski, Biljana Apostolovska-Toshevska, Milena Taleska & Vladimir Zlatanovski: Estimation of maximum annual discharges by frequency analysis with four probability distributions in case of non-homogeneous time series (Kazani karst spring in Republic of Macedonia)

Frequency analysis is usually used in hydrology for the possibility and scale of discharge extremes, especially low flows or flood features of concrete gauge. The paper presents a frequency analysis carried out on a 51 year period (1961-2011) series of maximum annual discharge, on Kazani karst spring gauge station. The time series were non-homogeneous according to Cumulative deviations test ($Q = 1.531$) and Standard normal homogeneity test ($= 10.543$). After adjusting of annual maximum discharges (AMD) before the year of change (1995), with using AnClim software, the frequency analysis was made using four probability distributions. Obtained results show possibility of karst spring flood occurrence for different return periods. After their calculation the best fitting distribution was chosen using graphical and statistical testing between empirical and theoretical data distribution. According to the spring significance for nature and humanity, it was crucial to choose a right probability distribution for annual maximum discharges of Kazani karst spring. Therefore, a comparison using graphical and statistical testing (Kolmogorov-Smirnov, χ^2 and Anderson-Darling test) was made. The best fit according to three tests was the Gumbel distribution with AMD of 4.54 m³/s for return period of 10 years, 6.06 m³/s for return period of 100 years and 7.56 m³/s for return period of 1000 years, respectively.

Key words: karst spring, annual maximum discharge, hydrology, homogeneity, frequency analysis.

Izvleček

UDK 911.2:551.44:556(495.6)
556.36:556.16(495.6)

Ivan Radevski, Svemir Gorin, Olgica Dimitrovska, Ivica Milevski, Biljana Apostolovska-Toshevska, Milena Taleska & Vladimir Zlatanovski: Ocena maksimalnih letnih pretokov s frekvenčno analizo s štirimi verjetnostnimi porazdelitvami v primeru nehomogenih časovnih serij (kraški izvir Kazani v Republiki Makedoniji)

Običajno uporabljamo v hidrologiji frekvenčno analizo za oceno verjetnosti in velikosti ekstremnih pretokov, še posebej nizkih tokov ali poplavnih značilnosti na določenih merilnih mestih. V članku je predstavljena frekvenčna analiza, ki je bila izvedena na seriji maksimalnih letnih pretokov izmerjenih na merilni postaji na kraškem izviru Kazani v obdobju 51 let (1961-2011). Glede na rezultate testa kumulativnih odklonov ($Q = 1,531$) in testa SNHT ($= 10,543$) je časovna serija nehomogena. Po prilagoditvi letnih maksimalnih pretokov pred letom spremembe (1995) z uporabo programske opreme AnClim je bila izvedena frekvenčna analiza z uporabo štirih verjetnostnih porazdelitev. Dobljeni rezultati kažejo na verjetnost pojava poplav na kraškem izviru za različne povratne dobe. Po izračunu so bile z uporabo grafičnih in statističnih primerjav med empirično in teoretično razporeditvijo podatkov določene porazdelitve z najboljšim ujemanjem. Ker je izvir naravna vrednota in pomemben vir za družbo, je zelo pomembno izbrati ustrezno verjetnostno porazdelitev za maksimalne letne pretoke kraškega izvira Kazani. Zato je bila izvedena primerjava z uporabo grafičnih in statističnih testov (Kolmogorov-Smirnov, χ^2 in Anderson-Darling). Najboljše ujemanje glede na te tri teste je bilo doseženo pri Gumbelovi porazdelitvi z maksimalnim letnim pretokom 4,54 m³/s za povratno dobo 10 let, 6,06 m³/s za povratno dobo 100 let in 7,56 m³/s za povratno dobo 1000 let.

Ključne besede: kraški izvir, maksimalni letni pretok, hidrologija, homogenost, frekvenčna analiza.

¹ Institute of Geography, Faculty of Natural Sciences and Mathematics, Ss. Cyril and Methodius University, Arhimedova 3, 1000, Skopje, Republic of Macedonia, e-mail: radevskiivan@yahoo.com

Received/Prejeto: 14.09.2015

INTRODUCTION

The “frequency analysis” method is one of the most used statistical techniques when analyzing hydrologic data. Flow frequency analysis relates the magnitude of a given flow event with the frequency or probability of that event’s occurrence with special emphasis on the extremes (the probability that various size events will be exceeded or not exceeded from a given sample of recorded events). Therefore, according to Maidment (1993) the analysis of extremes in hydrological data, such as the annual discharge series, is fundamental for the design of different engineering structures. Hence, a truly efficient design of any hydraulic structure can only be achieved as a result of studies which are based on an accurate frequency analysis.

The applicability of frequency methods has been widely recognized by numerous researchers in the field. There are several types of theoretical probability distributions (or frequency distribution functions) that have been successfully applied to hydrologic data (Mays 2004 as cited in Selaman *et al.* 2007). Some of the probability distributions commonly used for hydrologic variables were Normal Distribution, Lognormal Distribution, Ex-

ponential Distribution, Gamma Distribution, Pearson Type III Distribution, Log-Pearson Type III Distribution and Extreme Value Distribution. Extreme Value Distribution which is further subdivided into three forms – EVI (Gumbel Distribution), EVII (Frechet Distribution) and EVIII (Weibull Distribution) (Chow *et al.* 1988 as cited in Guru & Jha 2015).

However, within the scope of this study, we used the four most popularly used theoretical distribution models, the Lognormal, Pearson Type III, Log-Pearson Type III and Gumbel distribution. The paper presents a frequency analysis carried out on a 51 year period (1961–2011) series of maximum annual discharge, on Kazani karst spring gauge station, and the reason for this study was that the current literature does not provide a comprehensive study related to the frequency analysis of peak annual discharge in karst basins in Republic of Macedonia. Therefore, the purpose of this study was to compare the results obtained by applying each of the four methods of frequency analysis to identical sets of discharge data and to seek the best fitting distribution through graphical and statistical testing.

STUDY AREA

Kazani karst spring is located in the western part of the Republic of Macedonia, in the upstream area of the Treska River which is the second largest right tributary of the Vardar River (Fig. 1). The spring belongs to the Aegean water basin. The exposition of the spring is southeast, on the Bistra Mountain, with an altitude of 1040 m a.s.l.. Downstream from the Kazani spring, Studenchica River is a permanent stream, and upstream is called Gazoehka River, which is a temporary stream.

Kazani spring is the starting point for the Studenchica River (left tributary of Treska River). The topographical drainage basin of the spring is 25.5 km², which is inappropriate for catchment runoff, so the real hydrogeological catchment has an area of 80 km², with presumed directions of underground flow (Vasileski 1997). A large area in the western part of the drainage basin is karstified with marbles and limestones. The eastern part of the drainage basin is not karstified, which makes a complex hydrological feature with predominantly surface runoff from the eastern part of the basin, and underground hydrological connection from the western part of the basin (Vasileski 1997).

The Fig. 1 with basic hydrogeological data (Gjuzelkovski & Kotevski 1977) presents wider area around Kazani spring on Bistra Mountain. The main presumed underground connection comes from the western peaks on Bistra Mountain, which consists of karstified limestones and marbles (Vasileski 1997). Along the Studenchica River there is one detected fault which is a good base for larger water collection, downstream to the Kazani spring, located on the contact between impermeable flysch on the east and permeable marbles on the west.

The long-term average annual, minimum and maximum discharges for analyzing period 1961-2011 are 1.474 m³/s, 0.294 m³/s, and 5.400 m³/s (in 2010), respectively. But after adjusting of the time series in the extension of the text, the long-term maximum discharge is obtained as 5.900 m³/s in 1963. The Kazani spring (Fig. 2) has a great importance and it is a basic water supply source for the 160,000 inhabitants of towns Kichevo, Makedonski Brod, Krushevo and Prilep and near villages.

Karst springs and catchments display heterogeneity, variability and vulnerability of their hydrologic parameters in time and space (Bonacci 2004). The re-

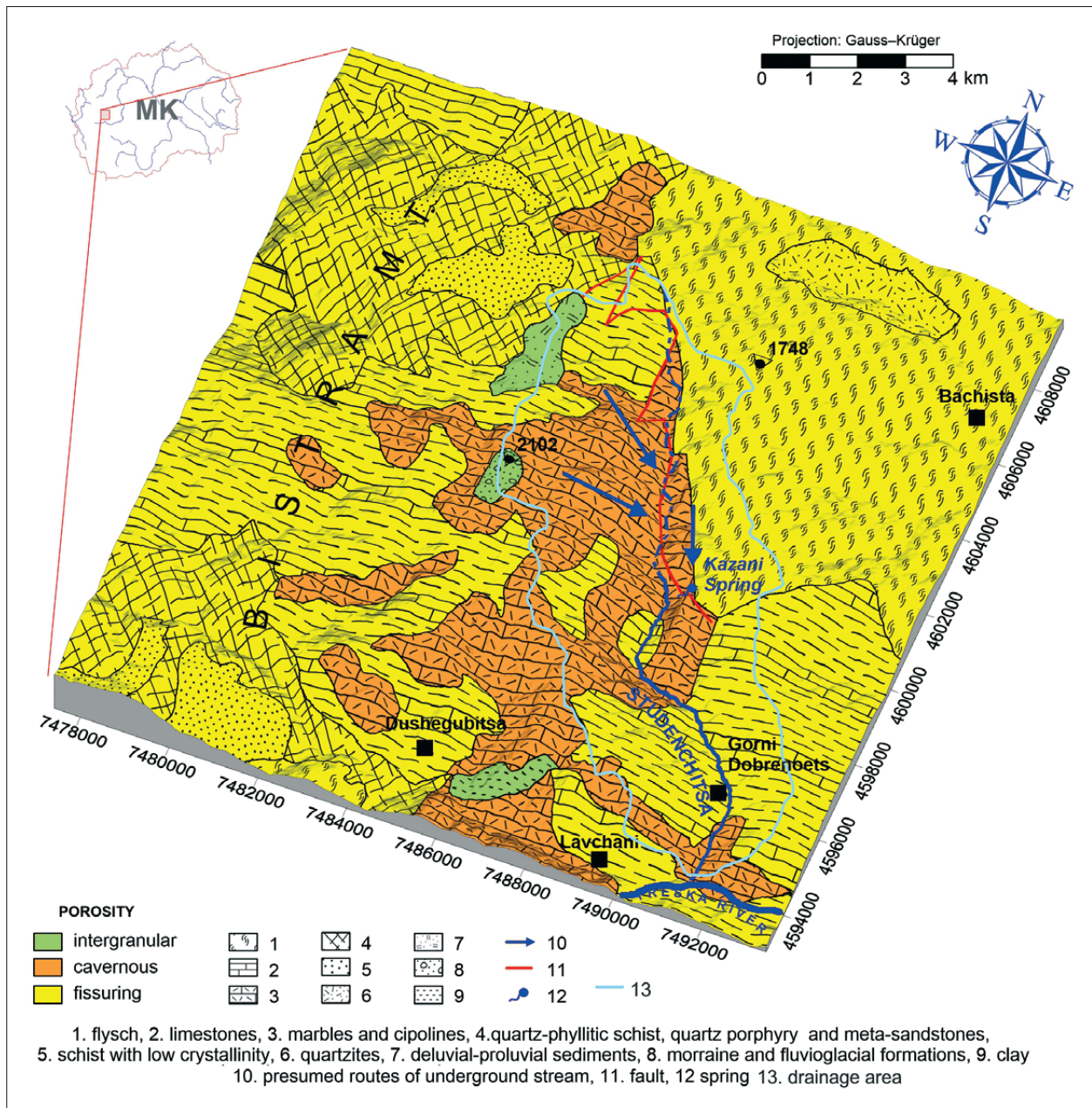


Fig. 1: Geological 3D model of the Kazani spring catchment area (Gjuzelkovski & Kotevski 1977).

search works connected to the karst spring behavior are summarized on the extremely heterogeneous character of karst springs regimes (Padilla *et al.* 1994; Fan *et al.* 2013). Flood features in karst terrain could be normal or simple flooding, which is more frequent (Kovacic & Ravbar 2010), or flash flooding whereas strong interaction between surface water and groundwater (Bonacci *et al.* 2006).

Often in the hydrology there are several reasons for changes in spring discharge characteristics, like natural climatic variations, anthropogenic influence and possible

climate changes (Bonacci 2007; Liu *et al.* 2014). In the case of Kazani spring there is no anthropogenic influence on the spring regime. There is a greater connection between precipitation and high discharge periods than that between precipitation and low discharge periods (Pavlič & Brenčič 2011). The karst spring hydrological regime predominantly depends on climatic conditions and geological layout (Fiorillo & Doglioni 2010).

The measurement procedures on karst spring gauge were not normal during the analyzed period. The measurement problem with a gauge on the Kazani karst

spring was solved with continuous, limnigraph type gauge station “Kaptaza” in 1992 and additional works on the gauge station in 1995. The gauge altitude is 1039 m a.s.l.. Before that period in the measurement procedure, there are several changes of gauge location and it was the reason to express doubt about the homogeneity in the data. The main subject of this research is frequency analysis of annual maximum discharge (AMD) of Kazani karst spring, after the adjusting of the non-homogeneous time series. The main reason for this research is that the current literature does not provide a comprehensive research of the maximum discharges of karst springs, especially in the Republic of Macedonia. The frequency analysis for this study is necessary for determination of the theoretical maximum discharges of the Kazani karst spring. This spring contributes a large amount of water in the recipient Treska River. The Treska River is a main hydrological object and causes flooding in the Kichevo Basin.



Fig. 2: Kazani karst spring.

METHODOLOGY

The basic problem before the frequency analysis was done was the non-homogeneity of the annual maximum discharges of Kazani karst spring, because of the changes of gauge location and type of measurement. Before the frequency analysis, the homogeneity test of time series was made (Lammersen *et al.* 2002; Chbab *et al.* 2006).

For data homogenization was used AnClim software, which is a comprehensive tool for processing monthly time series from transformations through quality control and homogenization to time series analysis (Štěpánek 2008), used first for homogeneity testing by using Cumulative deviations test (Buishand 1982).

$$S^* = \sum_{i=1}^k (x - \bar{x})$$

$$S^{**} = \frac{S^*}{D_x}$$

$$Q = \max_{0 \leq k \leq n} |S_k^{**}|$$

$$k = 0, \dots, n$$

$$R = \text{Max}_{0 \leq k \leq n} |S_k^{**}| - \text{Min}_{0 \leq k \leq n} |S_k^{**}|$$

The statistics Q and R are an indication of non-homogeneity (values which presents homogeneity), if they are higher than critical values from table (Buishand 1982).

The Standard Normal Homogeneity test - SNHT (Alexandersson 1986; Alexandersson & Moberg 1997;

Sahin & Cigizoglu 2010; Milošević *et al.* 2012), then adjusted with SNHT, which was used in previous studies for data homogenization for river discharges (Pekarova & Pekar 2006; Reihan *et al.* 2007). According to Alexandersson and Moberg (1997), is:

$$T_{max}^s = \max_{0 \leq k \leq n-1} \{T_a^s\} = \max_{0 \leq k \leq n-1} \{a \bar{z}_1^2 + (n - a) \bar{z}_2^2\}$$

where z_1 and z_2 are the arithmetic averages of the $\{z_t\}$ sequence before and after the year of change. The value “ a ” is year which is most probably the year of change. The critical values for this test are given in the same article.

The frequency analysis in karst spring gauges is correctly made by asymmetrical probability distributions: LogNormal, Pearson type III, Log Pearson type III and Gumbel distribution, and not often Normal or Gauss distribution (Benzeden *et al.* 1993; Vasileski & Radevski 2011; Sarauskiene & Kriauciuniene 2011; Vasileski & Radevski 2015). Gumbel distribution, also known as Generalized Extreme Value I distribution was particularly used for frequency analysis of karst springs (Liu *et al.* 2014). From the previous researches, there are factors that limit maximum annual discharges of karst springs, like the size of the karst conduit, intercatchment overflow, pressure flow and features of intermittent springs in the same catchment (Bonacci 2001).

One of the basic principles of flood frequency analysis is the estimation of probability distribution's

parameters (David & Davidova 2014). According to the time series length, the temporal information is enough for correct frequency analysis (Merz & Blöschl 2008). Besides, there are studies with a shorter analysis period (Abida & Ellouze 2008), according to measurement possibilities that were obtained 51 year annual maximum discharge time series (1961-2011) from gauge station, which is located near to karst spring (30 m distance).

The time series were plotted on probability paper with points according to Weibull formula. After that, four probability distributions (with their parameters) were calculated and used for frequency analysis (Gumbel, Lognormal, Pearson type III and Log Pearson type III), which are most frequently used for flood frequency analysis (Mujere 2011; Sarauskiene & Kriauciuniene 2011; Gavrilovic *et al.* 2012; Vasileski & Radevski 2015). Their lines were also plotted on probability paper.

The three statistical tests were carried out to investigate whether the empirical data follow the suggested theoretical distributions. The Kolmogorov-Smirnov (K-S) test (Rahman *et al.* 2013) was used to identify the best fitting distribution, with basic parameter maximum difference (D_{max}) between Weibull data points and each probability distribution. The Kolmogorov-Smirnov statistic for a given cumulative distribution function $F(x)$ is:

$$D_{max} = \max |F_s(x_i) - F_t(x_i)|$$

The Chi-Squared test (χ^2 test) is used to determine if a sample comes from a given distribution. It should be noted that this is not considered a high power statistical test and is not very useful (Cunnane 1989). The test is based on binned data, and the number of bins (k) is determined by:

$$\chi^2 = \sum_{i=1}^n \frac{O_i - E_i}{E_i}$$

where, χ^2 is Pearson's parameter, O_i is number of observations with i -type, n is total number of observations, E_i is the theoretical frequency of type i . For obtaining the critical value of χ -square test in necessary to calculate the degree of freedom, $d = n-1$, and after that use the Pearson table. If the chi-squared statistic exceeds the critical value, we reject the null hypothesis for theoretical distribution fitting on Weibull points.

Additionally, the Anderson-Darling test (AD test) was used because of its weight on the distribution tails, which makes it stronger than K-S test. The main statistic in AD test is A^2 , with critical value of 2.5018 for a significance level of $\alpha = 0.05$ (Anderson & Darling 1952). If the estimated A-D test statistic at the 0.05 significance level is greater than the critical value of the selected distribution function, the distribution function is accepted as a suitable candidate to describe the observed data (Gamage *et al.* 2013). The A-D test is implemented in modern computer software EasyFit (MathWave Technologies), which allows easily and automatically or manually fit of distributions to your data and select the best model in seconds. The software allows fitting analysis, of the 3 of 4 chosen probability distributions: Lognormal, Gumbel and Log Pearson type III distribution. The statistic A^2 depends on distribution frequency (F) and number of observations (n):

$$A^2 = -\frac{1}{n} \sum_{i=1}^n (2i-1) * [\ln F(x_i) + \ln(1 - F(x_{n-i+1}))]$$

The formula for the test statistic A^2 to assess the data putted in order, which comes from a distribution with cumulative distribution function (CDF). The F is function tested for fitting.

RESULTS AND DISCUSSION

In this chapter, we have tested the homogeneity of maximum annual discharge data series for the Kazani karst spring in the period 1961-2011. The doubt about data series comes from the fact of location changes of the gauge in 1992 and 1995.

The Cumulative deviations test is based on the adjusted partial sums (S^*) or cumulative deviations from the mean, and rescaled adjusted partial sums (S_k^{**}), D_x is the sample standard deviation.

The results from AnClim software presents values for Q (1.531) and R (1.688), which are higher than the critical value of Q (1.27), and critical value of R (1.55) for $n = 51$, and the year of change is 1995, which was previously detected according to gauge measurement history information. According to the cumulative deviations test the time series are non-homogenous.

Another testing was made with SNHT. The mathematical details of SNHT method can be seen in the two

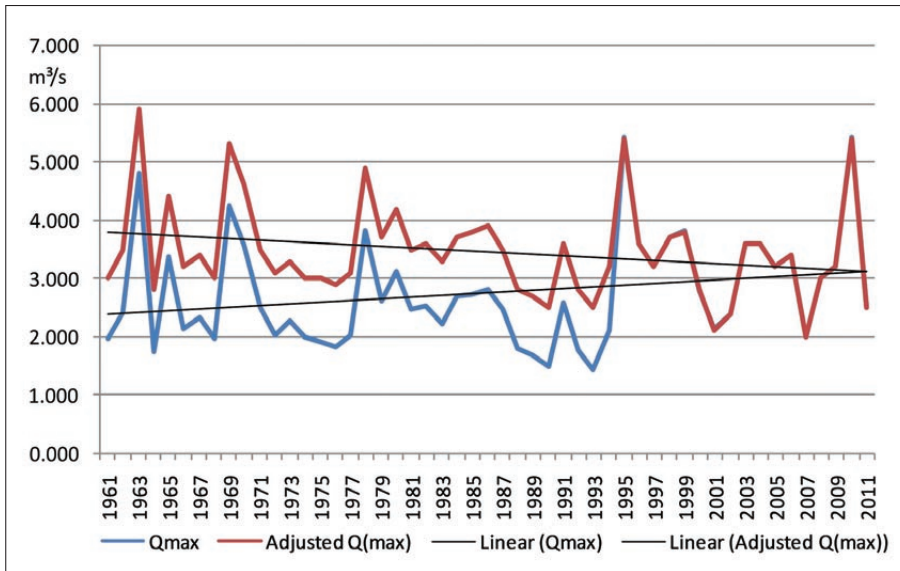


Fig. 3: Measured and adjusted AMD (m^3/s) of Kazani karst spring.

Tab. 1: Probability distribution results for different return period in years (m^3/s).

Distribution/return period	5	10	20	50	100	1000
LogNormal	4.10	4.55	4.96	5.47	5.83	6.99
Pearson III	4.07	4.57	5.03	5.60	6.01	7.33
Log Pearson III	4.06	4.54	5.00	5.60	6.06	7.64
Gumbel Max	4.05	4.54	5.01	5.61	6.06	7.56

studies (Alexanderson 1986; Alexandersson & Moberg 1997). The critical value for, according to the table (Alexandersson 1986) for $n = 51$ is 8.38 and the calculated

is 10.543, so the AMD time series according to SNHT is non-homogenous. Alternative hypothesis says that some time series mean value changes abruptly.

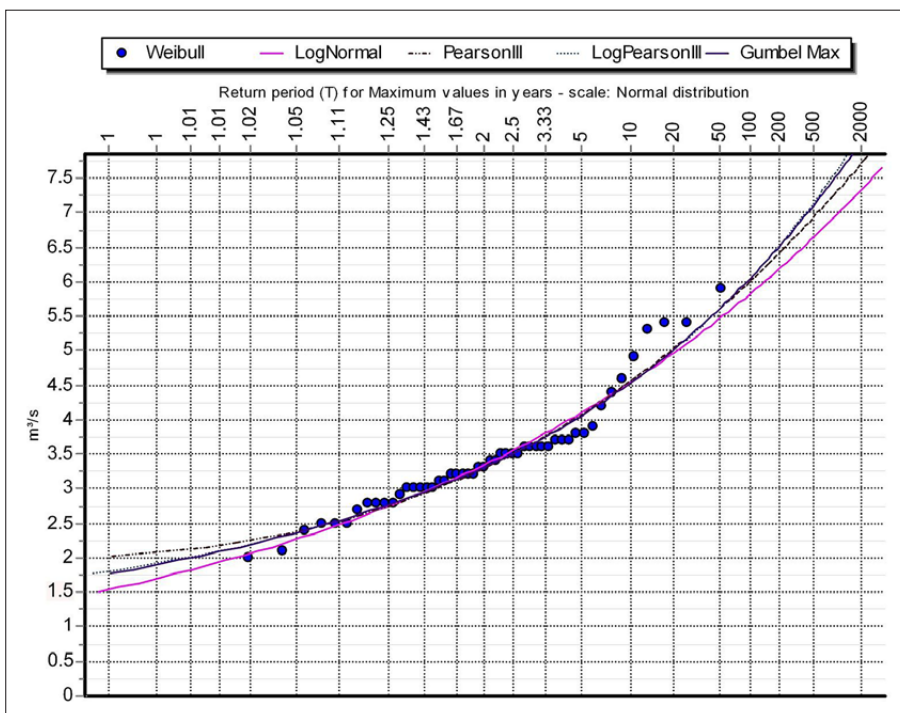


Fig. 4: Probability paper with four cumulative frequency distributions of AMD (m^3/s) compared with Weibull plotted points.

According to calculation in AnClim software calculation, also 1995 was the year of change, so after that, there is the possibility to adjust the AMD time series before or after the year change. Because of the historical conditions of gauge measurement, non-homogeneity before year of change, the period before 1995 (blue line in Fig. 3), was adjusted with AnClim (red line in Fig. 3) to the period after 1995, which was correctly measured.

Tab. 2: Kolmogorov Smirnov test for four probability distributions.

Kolmogorov-Smirnov test	$\alpha = 5\%$	Attained a (attained threshold)	D_{max}
LogNormal	ACCEPT	56.51 %	0.110
Pearson III	ACCEPT	77.62 %	0.092
Log Pearson III	ACCEPT	80.39 %	0.089
EV1-Max (Gumbel)	ACCEPT	82.52 %	0.087

The adjusted time series of AMD were used for frequency analysis after determining of the main parameters for each distribution. For the frequency analysis we used Hydrognomon, software developed free application for the analysis and processing of hydrological data, mainly in the form of time series. In this software there is Module Pythia, which allows frequency analysis and testing with K-S and χ^2 tests (Kozanis *et al.* 2005), with calculating of possibility discharges according to four probability distributions, for return periods of 5, 10, 20, 50, 100 and 1000 years.

Tab. 3: χ -square test for four probability distributions.

χ -Square test for All data	$\alpha=5\%$	Attained a (attained threshold)	Pearson Param.
LogNormal	ACCEPT	5.25 %	7.71
Pearson III	REJECT	4.30 %	6.29
Log Pearson III	ACCEPT	22.31 %	3.00
EV1-Max (Gumbel)	ACCEPT	56.03 %	2.06

The obtained results in Tab. 1, for theoretical AMD of Kazani karst spring are in range 4.05 m³/s for return period of 5 years to 7.56 m³/s for return period of 1000 years according to Gumbel distribution. The results are calculated for 6 different return periods. The Log Pearson distribution type III has the highest value of return period of 1000 years as 7.64 m³/s.

Probability paper in Fig. 4 can clearly notice satisfactory correspondence with Gumbel distribution and Log Pearson type III distribution, especially for high values of discharge, which suits a small probability. There is also satisfactory correspondence with the LogNormal distribution and the Pearson distribution III type. These two distributions do not show good correspondence with the empirical distribution of points on small probabilities of the gauge station at Kazani karst spring. This case of correspondence of logarithmic distributions with the empirical distribution is a common phenomenon in water courses with torrential character.

From the results obtained in Tab. 2, by the Kolmogorov-Smirnov test it is clear that it accepts four probability distributions with D_{max} values lower than a critical value of 0.19 for critical value $\alpha = 5\%$, so it means that four distributions, according to the K-S test, are adjusted

Tab. 4: Anderson Darling test for Lognormal, Log Pearson type III and Gumbel probability distribution.

AD test for All data	$\alpha = 5\%$	A^2 statistic
LogNormal	ACCEPT	0.679
Log Pearson III	ACCEPT	0.553
EV1-Max (Gumbel)	ACCEPT	0.532

to the Weibull points. The maximum difference between probability distribution and Weibull points has a lower value in case of Gumbel probability distribution (0.087) and Log Pearson III distribution (0.089), which means these two distributions have better comparison with Weibull points.

From the results obtained in Tab. 3, by the χ -square test with 6 classes of AMD time series, we can conclude that it accepts Log Pearson distribution type III with attained "a" 22.31 % and Pearson parameter is equal to 3 and Gumbel distribution with attained "a" of 56.03 % and Pearson parameter 2.06 were accepted for critical value of 5 %. The Pearson distribution type III was rejected.

From the results obtained in Tab. 4, the A^2 statistic, we can conclude that it accepts three distributions with values lower than critical (2.5018), but Gumbel distribution has a lowest value, which means that this distribution has the best fitting with AMD time series. Considering that this test is more sensitive in distribution tails, we will choose Gumbel distribution as the best fitting distribution for AMD on Kazani karst spring.

CONCLUSION

The study aimed at understanding of the frequency analysis of maximum annual discharges for long term period. The results of frequency analysis (theoretical maximum of 7.56 m³/s for 1000 years return period), shows the range of maximum possible discharge of Kazani karst spring, like a constant karst spring, without larger amplitudes of maximum annual discharges, which is very adequate for water supply of populated settlements. Because of the historical conditions of gauge measurement, non-homogeneity before the year of change, the period before 1995, was adjusted by AnClim software for the period after 1995, which was correctly measured. After frequency analysis of AMD, the best fitting distribution is the Gumbel distribution, which is proved with graphical comparison on probability paper and statistical tests (K-S, χ^2 and Anderson-Darling test). The best fitting is

the Gumbel distribution with a result of 4.54 m³/s for return period of 10 years, 6.06 m³/s for return period of 100 years and 7.56 m³/s for return period of 1000 years. The paper shows one way of determination of flood scale in function of protection from flood features, building of safe objects on karst areas and of course sustainable development of the wider spring area. Those methods can be implemented in the same catchments with non-homogeneous data in gauges with natural or anthropogenic changes of discharge also. The study results are useful in spatial planning studies and regional plans and for improvement of the infrastructure on karst spring Kazani and downstream the Studenchica River, related to this study and regarding to different return periods of calculated AMD.

REFERENCES

- Abida, H., & M. Ellouze, 2008: Probability distribution of flood flows in Tunisia.- *Hydrology and Earth System Sciences*, 12, 3, 703-714.
- Alexandersson, H., 1986: A homogeneity test applied to precipitation data.- *Journal of climatology*, 6, 6, 661-675.
- Alexandersson, H. & A. Moberg, 1997: Homogenization of Swedish temperature data. Part I: Homogeneity test for linear trends.- *International Journal of Climatology*, 17, 1, 25-34.
- Anderson, T.W. & D.A. Darling, 1952: Asymptotic theory of certain "goodness-of-fit" criteria based on stochastic processes.- *Annales of Mathematical Statistics*, 23, 193-212. doi:10.1214/aoms/1177729437
- Benzeden, E., Olcay, M.S. & K. Bagali, 1993: Flood frequency analysis in karst river basins.- In: Gunay, G., Johnson A.I. & W. Black (eds.) *Hydrological Processes in Karst Terranes, Proceedings of the Antalya Symposium and Field Seminar*, October 1990, IAHS Publ., 207, 187-202, Antalya.
- Bonacci, O., 2001: Analysis of the maximum discharge of karst springs.- *Hydrogeology Journal*, 9, 4, 328-338. doi:10.1007/s100400100142
- Bonacci, O., 2004: Hazards caused by natural and anthropogenic changes of catchment area in karst.- *Nat. Hazards and Earth Syst. Sci.*, 4, 5-6, 655-661. doi:10.5194/nhess-4-655-2004
- Bonacci, O., 2007: Analysis of long-term (1878-2004) mean annual discharges of the karst spring Fontaine de Vaucluse (France).- *Acta carsologica*, 36, 1, 151-156. doi: <http://dx.doi.org/10.3986/ac.v36i1.217>
- Bonacci, O., Ljubenkov, I. & T. Roje-Bonacci, 2006: Karst flash floods: an example from the Dinaric karst (Croatia).- *Nat. Hazards Earth Syst. Sci.*, 6, 195-203. doi:10.5194/nhess-6-195-2006
- Buishand, T.A., 1982: Some methods for testing the homogeneity of rainfall records.- *Journal of Hydrology*, 58, 1, 11-27.
- Chbab, E.H., Buiteveld, H. & F. Diermanse, 2006: Estimating exceedance frequencies of extreme river discharges using statistical methods and physically based approach.- *Österreichische Wasser - und Abfallwirtschaft*, 58, 3-4, 35-43.
- Chow, V.T., Maidment, D.R. & L.W. Mays, 1988: *Applied Hydrology*.- McGraw-Hill, pp. 572, New York.
- Cunnane, C., 1989: *Statistical distributions for flood frequency analysis*.- Operational Hydrology Report (WMO), Report number: 33.
- David, V. & T. Davidova, 2014: Methodology for flood frequency estimations in small catchments.- *Natural Hazards and Earth System Sciences*, 14, 10, 2655-2669. doi:10.5194/nhess-14-2655-2014

- Fan, Y., Huo, X., Hao, Y., Liu, Y., Wang, T., Liu, Y. & T.J. Yeh, 2013: An assembled extreme value statistical model of karst spring discharge.- *Journal of Hydrology*, 504, 57-68. <http://dx.doi.org/10.1016/j.jhydrol.2013.09.023>
- Fiorillo, F. & A. Doglioni, 2010: The relation between karst spring discharge and rainfall by cross-correlation analysis (Campania, southern Italy).- *Hydrogeology Journal*, 18, 8, 1881-1895. doi:10.1007/s10040-010-0666-1
- Gamage, S.H.P.W., Hewa, G.A. & S. Beecham, 2013: Probability distributions for explaining hydrological losses in South Australian catchments.- *Hydrology and Earth System Sciences*, 17, 11, 4541-4553.
- Gavrilovic, L., Milanovic Pesic, A. & M. Urosev, 2012: A hydrological analysis of the greatest floods in Serbia in the 1960-2010 period.- *Carpathian Journal of Earth and Environmental Sciences*, 7, 4, 107-116.
- Gjuzelkovski, D. & G. Kotevski, 1977: *Hydrogeoloska karta na SR Macedonia, 1:200 000*.- Macedonia.
- Guru, N. & R. Jha, 2015: Flood frequency analysis for Tel sub-basin of Mahanadi River, India using Weibull, Gringorten and L-moments formula.- *International Journal of Innovative Research and Creative Technology*, 1, 2, 220-223.
- Kovacic, G. & N. Ravbar, 2010: Extreme hydrological events in karst areas of Slovenia, the case of the Unica River basin.- *Geodinamica Acta*, 23, 1-3, 89-100. doi:10.3166/ga.23.89-100
- Kozanis, S., Christofides, A., Mamassis, N., Efstratiadis, A. & D. Koutsoyiannis, 2005: Hydrognomon: A hydrological data management and processing software tool.- *Geophysical Research Abstracts*, 7, 04644.
- Lammersen, R., Engel, H., Van de Langemheen, W. & H. Buiteveld, 2002: Impact of river training and retention measures on flood peaks along the Rhine.- *Journal of Hydrology*, 267, 1, 115-124. [http://dx.doi.org/10.1016/S0022-1694\(02\)00144-0](http://dx.doi.org/10.1016/S0022-1694(02)00144-0)
- Liu, Y., Hao, Y., Fan, Y., Wang, T., Huo, X., Liu, Y. & T.C.J. Yeh, 2014: A nonstationary extreme value distribution for analysing the cessation of karst spring discharge.- *Hydrological Processes*, 28, 20, 5251-5258. doi: 10.1002/hyp.10013
- Maidment, D.R., 1993: *Handbook of Hydrology*.- McGraw-Hill Professional, pp. 1424, New York.
- Mays, L.W. (ed.), 2004: *Urban Stormwater Management Tools*.- McGraw-Hill, pp. 320, New York.
- Merz, R. & G. Blöschl, 2008: Flood frequency hydrology: 1. Temporal, spatial, and causal expansion of information.- *Water Resources Research*, 44, 8. doi: 10.1029/2007WR006744
- Milošević, D., Savić, S., Marković, V. & R. Kujundžić-Đačović, 2012: Homogenisation of Mean Air Temperature Time Series from Vojvodina (North Serbia).- *Geographica Pannonica*, 16, 2, 38-43.
- Mujere, N., 2011: Flood frequency analysis using the Gumbel distribution.- *International Journal on Computer Science & Engineering*, 3, 7, 2774-2778.
- Padilla, A., Pulido-Bosch, A. & A. Mangin, 1994: Relative importance of baseflow and quickflow from hydrographs of karst spring.- *Ground Water*, 32, 2, 267-277. doi: 10.1111/j.1745-6584.1994.tb00641.x
- Pavlič, U. & M. Brenčič, 2011: Application of sequential trend analysis for discharge characterisation of Vipava karstic springs, Slovenia.- *Acta Carsologica*, 40, 2, 283-291.
- Pekarova, P. & J. Pekar, 2006: Long-term discharge prediction for the Turnu Severin station (the Danube) using a linear autoregressive model.- *Hydrological Processes*, 20, 5, 1217-1228. doi: 10.1002/hyp.5939
- Rahman, A.S., Rahman, A., Zaman, M.A., Haddad, K., Ahsan, A. & M. Imteaz, 2013: A study on selection of probability distributions for at-site flood frequency analysis in Australia.- *Natural hazards*, 69, 3, 1803-1813. doi:10.1007/s11069-013-0775-y
- Reihan, A., Koltsova, T., Kriauciuniene, J., Lizuma, L. & D. Meilutyte-Barauskiene, 2007: Changes in water discharges of the Baltic States rivers in the 20th century and its relation to climate change.- *Nordic Hydrology*, 38, 4-5, 401-412.
- Sahin, S. & H.K. Cigizoglu, 2010: Homogeneity analysis of Turkish meteorological data set.- *Hydrological Processes*, 24, 8, 981-992. doi: 10.1002/hyp.7534
- Sarauskiene, D. & J. Kriauciuniene, 2011: Flood frequency analysis of Lithuanian rivers.- In: Cygas, D. & K.D. Froehner (eds.) *8th International Conference on Environmental Engineering*, 19th-20th May 2011, Vilnius, Lithuania. VGTU Press "Technika", 666-671, Vilnius.
- Selaman, O.S., Said, S. & F.J. Putuhena, 2007: Flood frequency analysis for Sarawak using Weibull, Gringorten and L-Moments formula.- *Journal-The Institution of Engineers*, 68, 1, 43-52.
- Štěpánek, P., 2008: *AnClim - software for time series analysis*. Dept. of Geography, Fac. of Natural Sciences, MU, Brno.- [Online] Available from: <http://www.climahom.eu/software-solution/anclim> [Accessed 30th September 2016].
- Vasileski, D., 1997: *Studenčica - Physical geography Study* [In Macedonian].- *EkoRitam*, pp. 135, Skopje.

Vasileski, D. & I. Radevski, 2011: Implementation of Gauss function in determining probability of floods at the gauge station "Dolenci" on the Crna Reka in Republic of Macedonia.- *Geographica Pannonica*, 15, 4, 113-118.

Vasileski, D. & I. Radevski, 2015: Analysis of high waters on the Kriva Reka River, Macedonia.- *Acta Geographica Slovenica*, 54, 2, 363-377. doi: <http://dx.doi.org/10.3986/AGS54209>