



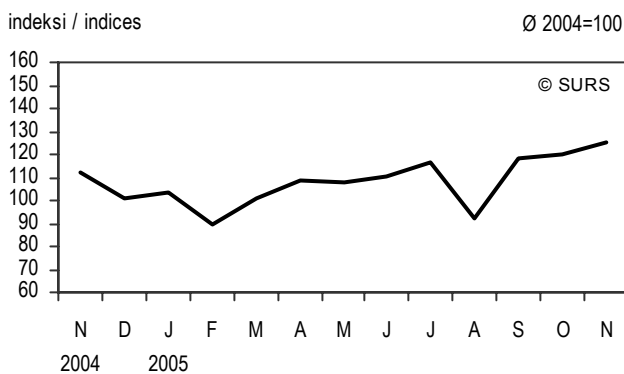
INDEKSI PRIHODKA V STORITVENIH DEJAVNOSTIH, SLOVENIJA, NOVEMBER 2005

TURNOVER INDICES FOR SERVICE ACTIVITIES, SLOVENIA, NOVEMBER 2005

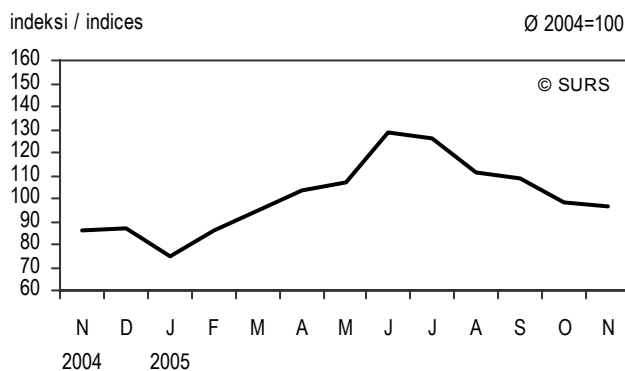
- ▶ Prihodek od prodaje v novembru 2005 se je v primerjavi s prihodkom v oktobru 2005 najbolj povečal v skupini podjetniško svetovanje (indeks 116,9), najbolj zmanjšal pa v skupini storitve potovalnih in turističnih organizacij (indeks 86,2).
- ▶ Prihodek od prodaje je bil v novembru 2005 v vseh opazovanih storitvenih dejavnostih višji kot v novembru 2004; najbolj se je povečal v skupini oglaševanje (indeks 124,6).
- ▶ Prihodek od prodaje v novembru 2005 je bil v opazovanih storitvenih dejavnostih večinoma višji od povprečja leta 2004, najbolj se je povečal v skupini oglaševanje (indeks 139,3).
- ▶ In comparison with October 2005, in November 2005 turnover from the sale of services increased the most in enterprise consultancy (index 116.9). In this comparison turnover decreased the most in activities of travel agencies (index 86.2).
- ▶ In comparison with November 2004, in November 2005 turnover from the sale of services increased in all observed services, of which the most in advertising (index 124.6).
- ▶ Compared to the average of 2004, in November 2005 turnover from the sale of services mostly increased in the observed services, of which the most in advertising (index 139.3).

Slika1: Indeksi nominalnega prihodka v storitvenih dejavnostih po skupinah dejavnosti, Slovenija, november 2004–november 2005

Chart1: Turnover value indices for service activities, without value added tax, by groups of activities, Slovenia, November 2004–November 2005

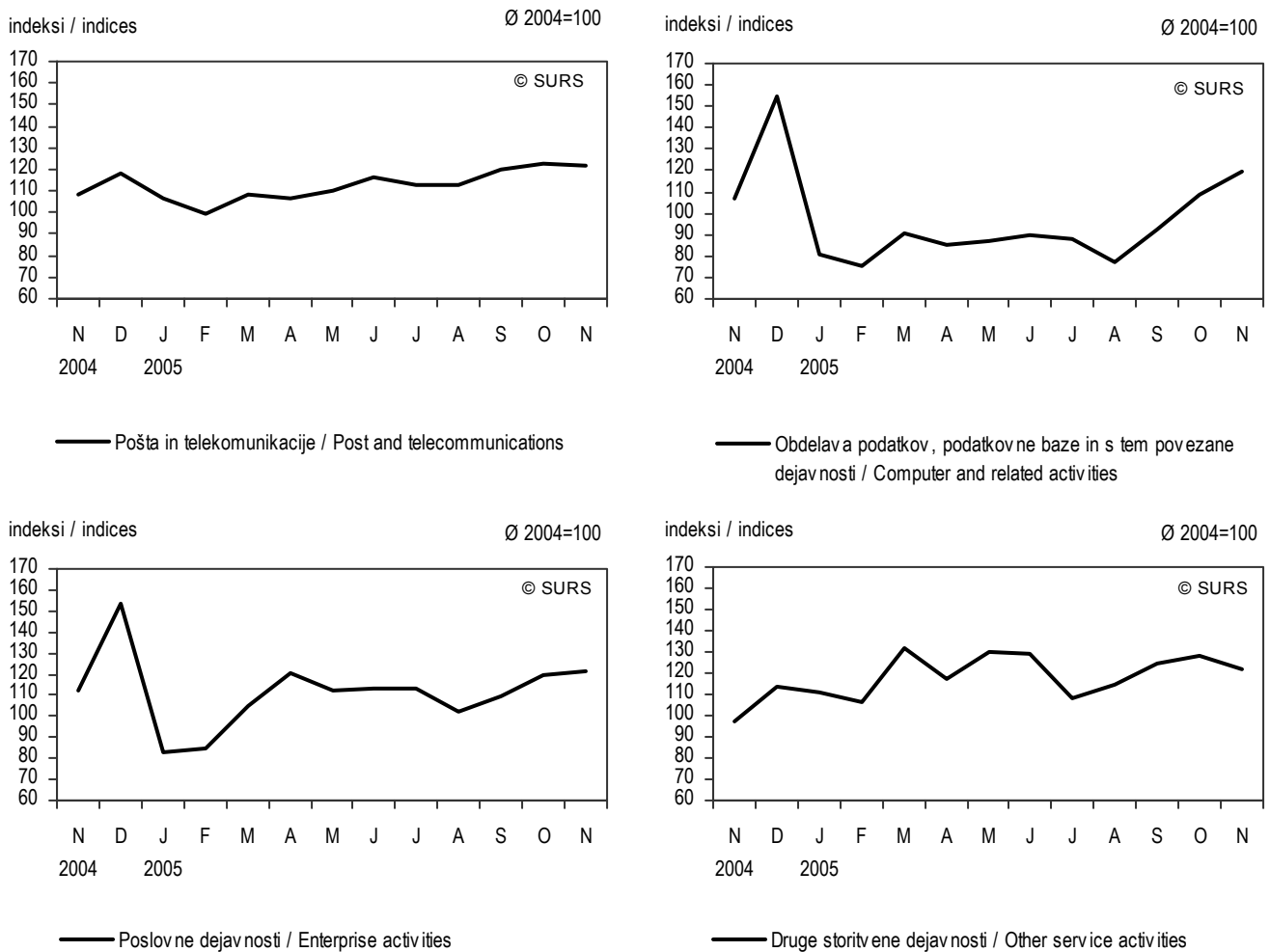


— Kopenski promet / Land transport



— Pomožne prometne dejavnosti; storitve potovalnih in turističnih organizacij / Supporting and auxiliary transport activities; activities of travel agencies

Slika1: Indeksi nominalnega prihodka v storitvenih dejavnostih po skupinah dejavnosti, Slovenija, november 2004-november 2005 (nadaljevanje)
Chart1: Turnover value indices for service activities, without value added tax, by groups of activities, Slovenia, November 2004-November 2005 (continued)



1 Indeksi nominalnega prihodka v storitvenih dejavnostih po skupinah dejavnosti, Slovenija, november 2005
Turnover value indices for service activities, without value added tax, by groups of activities, Slovenia, November 2005

	XI 05 XI 04	XI 05 X 05	XI 05 Ø 04	
Kopenski promet	112,4	105,0	125,6	Land transport
Vodni promet	z	z	z	Water transport
Zračni promet	z	z	z	Air transport
Pomožne prometne dejavnosti; storitve potovalnih in turističnih organizacij	113,9	98,4	96,6	Supporting and auxiliary transport activities; activities of travel agencies
Pomožne prometne dejavnosti	117,5	103,7	105,8	Supporting and auxiliary transport activities
Storitve potovalnih in turističnih organizacij	104,8	86,2	77,9	Activities of travel agencies
Pošta in telekomunikacije	112,7	99,1	122,0	Post and telecommunications
Obdelava podatkov, podatkovne baze in s tem povezane dejavnosti	112,6	110,5	119,8	Computer and related activities
Poslovne dejavnosti	111,3	101,0	121,1	Enterprise activities
Podjetniško svetovanje	103,3	116,9	111,6	Enterprise consultancy
Tehnično svetovanje	111,5	92,7	123,5	Technical consultancy
Oglaševanje	124,6	108,1	139,3	Advertising
Druge poslovne dejavnosti	117,6	105,7	120,8	Other enterprise activities
Čiščenje objektov in opreme	105,4	99,7	112,0	Industrial cleaning
Druge storitvene dejavnosti	122,8	94,9	121,6	Other service activities

z podatek zaradi zaupnosti ni objavljen / data not published because of confidentiality



2 Indeksi števila delovno aktivnih oseb, ki delajo v podjetjih v storitvenih dejavnostih, po skupinah dejavnosti, Slovenija, November 2005
Indices of the number of persons in employment working in the enterprises in service activities, by groups of activities, Slovenia, November 2005

	XI 05 XI 04	XI 05 X 05	XI 05 Ø 04	
Kopenski promet	102,1	100,5	103,1	Land transport
Vodni promet	115,9	100,9	118,3	Water transport
Zračni promet	98,1	99,7	100,8	Air transport
Pomožne prometne dejavnosti; storitve potovalnih in turističnih organizacij	99,8	99,7	97,9	Supporting and auxiliary transport activities; activities of travel agencies
Pomožne prometne dejavnosti	100,2	100,1	98,0	Supporting and auxiliary transport activities
Storitve potovalnih in turističnih organizacij	97,4	97,4	97,2	Activities of travel agencies
Pošta in telekomunikacije	104,5	100,6	106,1	Post and telecommunications
Obdelava podatkov, podatkovne baze in s tem povezane dejavnosti	109,5	101,4	113,9	Computer and related activities
Poslovne dejavnosti	105,3	100,7	108,1	Enterprise activities
Podjetniško svetovanje	101,3	100,5	104,3	Enterprise consultancy
Tehnično svetovanje	101,5	100,6	101,3	Technical consultancy
Oglaševanje	107,7	100,5	110,5	Advertising
Druge poslovne dejavnosti	114,8	101,2	121,0	Other enterprise activities
Čiščenje objektov in opreme	103,9	100,4	106,3	Industrial cleaning
Druge storitvene dejavnosti	98,9	99,7	100,0	Other service activities

Vir: SRDAP, statistični register delovno aktivnega prebivalstva / Source: SRE, Statistical Register of Employment

METODOLOŠKA POJASNILA

Namen raziskovanja

je mesečno statistično merjenje gibanja prihodka v storitvenih dejavnostih. Dopolnjujemo ga s podatki o gibanju števila oseb, ki so v teh dejavnostih delovno aktivne.

Enote opazovanja

so podjetja, ki so po svoji glavni dejavnosti uvrščena v dejavnosti: promet, skladiščenje, zveze, poslovne storitve in druge storitvene dejavnosti.

Vir podatkov

Podatke o prihodu zbiramo s statističnim raziskovanjem Mesečno poročilo o poslovnih in drugih storitvenih dejavnostih (STOR/M). Vir podatkov zanj je računovodska dokumentacija podjetij, izjemoma tudi njihova ocena.

Vir podatkov o delovno aktivnih osebah je Statistični register delovno aktivnega prebivalstva (SRDAP), ki ga vodi Statistični urad RS. Vzpostavljen je bil na osnovi popisa zaposlenih oseb leta 1986. Dopolnjuje in popravlja (osvežuje) se s podatki iz obrazcev M, to je Prijava podatkov za uvedbo in vodenje matične evidence pokojninskega in invalidskega zavarovanja in zdravstvenega zavarovanja, evidence o sklenitvi delovnega razmerja (M-1, M-2, M-1a, M-3, M-3a, M-DČ).

Zajetje

Vzorčna podjetja, ta zastopajo celotno populacijo podjetij, smo izbrali izmed 12 668 potencialnih enot. Te enote smo opredelili tako, da smo

METHODOLOGICAL EXPLANATIONS

Purpose of the survey

is monthly statistical observation of trends in turnover without VAT for service activities. It is completed with the number of persons in employment working in the enterprises in service activities.

Observation units

are the enterprises whose principal activity is classified in transport, storage, communication, business activities and other service activities.

Data source

We collect data on turnover with the statistical survey STOR/M (Monthly Report on Business and Other Service Activities). The source of data is accounting documentation of enterprises and only exceptionally their estimates.

The data source on persons in employment is the Statistical Register of Employment, which is kept by the Slovenian Statistical Office. It was set up on the basis of the 1986 Census of persons in paid employment. The data on employment are obtained from monthly M-forms, i.e. registration of data for the introduction and keeping of the central record of pension and disability insurance, health insurance and employment (M-1, M-2, M-1a, M-3, M-3a, M-DČ).

Coverage

The sample is chosen among 12,668 potential units of observation (enterprises), which represent the whole population. We defined these



Poslovni register Slovenije dopolnili z informacijami iz drugih virov (zaključni računi AJPES, Statistični register delovno aktivnega prebivalstva SRDAP).

Vzorec

je razdeljen na stratum, in sicer po dejavnostih in po velikostnih razredih podjetij. V razvrstitvi podjetij po dejavnosti je upoštevana njihova glavna dejavnost (SKD), to je praviloma tista dejavnost, s katero podjetje ustvari pretežni del dodane vrednosti. Glede na velikostne razrede so podjetja lahko velika, srednje velika in mala. V vzorec so vključena vsa velika in srednje velika podjetja, stratumski razporeditev malih podjetij pa je določena glede na njihov prihodek in število zaposlenih. V vzorec je bilo izbranih 1 477 podjetij.

Zaradi načina oblikovanja vzorca in zaradi reorganizacij ali drugih sprememb v poslovanju nekatera podjetja ne ustrezajo zahtevam raziskovanja (še niso začela poslovati ali so prenehala poslovati, so v stečajju, ne opravljajo opazovane dejavnosti ...). Vsa ta podjetja štejemo za neustrezna. Razmerje med številom ustreznih in številom v vzorec zajetih enot je izraženo s **stopnjo ustreznosti**. Ker se število neustreznih enot iz meseca v mesec lahko spreminja, se spreminja tudi stopnja ustreznosti. Tudi število podjetij, ki odgovorijo na vprašalnik, niha iz meseca v mesec. Tista podjetja, ki ne odgovorijo, čeprav so ustrezna, štejemo za manjkajoči odgovor. Razmerje med številom prejetih odgovorov in številom ustreznih enot v vzorcu je izraženo s **stopnjo odgovorov**. Tako je stopnja odgovorov v novembru 2005 obsegala 86,1 %, stopnja ustreznosti pa 94,7 %.

V tabeli o delovno aktivnih osebah so upoštewane vse v opazovanih dejavnostih (promet, skladiščenje, zveze, poslovne storitve in druge storitvene dejavnosti) zaposlene in samozaposlene osebe, ki so obvezno pokojninsko in zdravstveno zavarovane ali so v delovnem razmerju na območju RS.

Način zbiranja podatkov

Raziskovanje izvajamo mesečno po poštni metodi.

Definicije in pojasnila

Prihodek je skupni znesek, ki ga celotno podjetje obračuna za opravljene storitve v enem mesecu. Vsebuje vse stroške in obremenitve, vezane na kupca, ne zajema pa davka na dodano vrednost (DDV), morebitne prodaje osnovnih sredstev, prihodkov od financiranja in drugih izrednih dohodkov. Prodaja na posojilo se šteje v mesec fakturiranja. Prihodek je prikazan po tekočih cenah v času izdaje računa.

Podatki za tekoči mesec so začasni in v naslednjih mesecih jih še dopolnjujemo.

Delovno aktivno prebivalstvo, vključeno v SRDAP, so zaposlene in samozaposlene osebe, ki so obvezno pokojninsko in zdravstveno zavarovane ali so v delovnem razmerju na območju Republike Slovenije v starosti od 15 let do upokojitve.

Delovno razmerje je lahko sklenjeno za določen ali nedoločen čas, s polnim delovnim časom ali z delovnim časom, krajšim od polnega.

K delovno aktivnemu prebivalstvu sodijo:

- osebe, ki so v delovnem razmerju (zaposlene osebe): pri podjetju, družbi, zavodu, drugi organizaciji; pri podružnicah tujih podjetij; izvoljeni ali imenovani nosilci javne ali družbene funkcije; matere z otrokom, ki delajo po posebnih predpisih; lastniki podjetij, ki jih osebno vodijo in niso zavarovani iz drugega naslova; od 1. 1. 1999 osebe, udeležene v javnih delih; k zaposlenim osebam ne štejemo

units by supplementing the Business Register of Slovenia with information from other sources: annual accounting statements of the Agency of the Republic of Slovenia for Public and Legal Records and Services and the Statistical Register of Employment.

Sample

is divided into strata by activities and size of enterprises. The classification of enterprises by activity takes into consideration their main activity (SKD), which is the one having the greatest share in the enterprise's value added. Enterprises are classified by size into large, medium-sized and small ones. All large and medium-sized enterprises are included in the sample, while in small enterprises the stratum allocation depends on their income and the number of employees. There were 1,477 enterprises selected in the sample.

Due to the method of creating the sample and due to reorganisation and other changes in operation, some enterprises do not meet survey requirements (have not started to operate, stopped their operations, are bankrupt, are not involved in the observed activity, etc.). All these enterprises are labelled ineligible. The number of eligible units in the total number of units is the **eligibility rate**. The eligibility rate can change between months because of the changes in the number of ineligible units. The number of enterprises that answer the questionnaire also changes between months. Those enterprises that do not respond are labelled non-response. The number of received responses in the total number of eligible units in the sample is the **response rate**. The response rate for November 2005 was 86,1% and the eligibility rate was 94.7%.

The table on persons in employment covers all persons in paid employment in activities observed (transport, storage, communication, business activities and other service activities) and self-employed persons who have compulsory pension and health insurance or are employed on the territory of the Republic of Slovenia.

Method of data collection

The survey is carried out monthly by mail.

Definitions and explanations

Turnover without VAT is the total amount that the enterprises settled for performed services in the month. It includes all costs and charges linked to the buyer and excludes the value-added tax, possible sale of fixed assets, financial income and other outstanding income. The sale for loan is registered in the month of invoicing. The turnover is shown at current prices of the month of invoicing.

Data for the current month are provisional and will be supplemented in the following months.

Persons in employment in the Statistical Register of Employment are persons in paid employment and self-employed persons who have compulsory pension and health insurance or are employed on the territory of the Republic of Slovenia and are at least 15 years old and not retired.

Employment can be permanent or temporary, full time or part time.

Persons in employment are:

- persons in paid employed in enterprises, companies, institutions and other organisations or in subsidiaries of foreign enterprises, elected or appointed holders of public functions, mothers with children working under special regulations, owners of enterprises who run them personally and are not insured otherwise, and since 1 January 1999 people performing public works; persons in paid employment are not



oseb, ki delajo v teh podjetjih, družbah in organizacijah po pogodbi o delu ali po avtorski pogodbi, in državljanov Republike Slovenije s stalno zaposlitvijo v slovenskih predstavništvi, na gradbiščih ipd. v tujini;

- osebe, ki so v delovnem razmerju (zaposlene osebe): pri osebah, ki opravljajo gospodarsko ali pridobitno dejavnost; pri osebah, ki opravljajo poklicno dejavnost kot edini ali glavni poklic; pri fizičnih osebah, ki uporabljajo dopolnilno delo drugih ljudi;
- samozaposlene osebe: osebe, ki opravljajo gospodarsko ali pridobitno dejavnost (samostojni podjetniki posamezniki); osebe, ki opravljajo poklicno dejavnost kot edini ali glavni poklic (npr. samostojni raziskovalci).

Poročevalski datum, tj. datum, na katerega se nanašajo podatki iz SRDAP, je zadnji dan v poročevalskem (referenčnem) mesecu. Povprečje leta je dvanajstina seštevka podatkov vseh dvanajstih mesecev leta.

Za podrobnejša pojasnila v zvezi s podatki o delovno aktivnih osebah se lahko obrnete na oddelek za statistiko dela na Statističnem uradu RS.

Obdelava podatkov

Podjetjem, ki na vprašalnik ne odgovorijo, podatke vstavimo (imputiramo) glede na njihove registrske podatke o prihodku ter glede na porezno povprečno razmerje med prihodkom v tekočem in prejšnjem mesecu tistih podjetij v isti stratumski celici, ki so odgovorila. Podatki so uteženi zaradi verjetnosti izbora, uteži pa so nato še popravljene glede na razmerje rojstev in smrti v populaciji.

Rezultate objavljamo v obliki indeksov nominalnih vrednosti; tj. zaradi prekratke časovne vrste niso obdelani glede na sezono in število delovnih dni. Indeksi so objavljeni na ravni sestavljenih skupin dejavnosti, za katere so podatki še reprezentančni.

Storitvene dejavnosti po skupinah in njim pripadajoče dejavnosti po SKD

Skupine storitvenih dejavnosti	Šifra SKD	Raven dejavnosti (oddelek, skupina, razred)
kopenski promet	60.	kopenski promet, cevovodni transport
vodni promet	61.	vodni promet
zračni promet	62.	zračni promet
pomožne prometne dejavnosti; storitve potovalnih in turističnih organizacij	63.	pomožne prometne dejavnosti; dejavnost potovalnih in turističnih organizacij
pomožne prometne dejavnosti	63.1	prekladanje, skladiščenje
	63.2	druge pomožne dejavnosti v prometu
	63.4	dejavnosti drugih prometnih agencij
storitve potovalnih in turističnih organizacij	63.3	dejavnost potovalnih agencij in organizatorjev potovanj; s turizmom povezane dejavnosti
pošta in telekomunikacije	64.	pošta in telekomunikacije
obdelava podatkov, podatkovne baze in s tem povezane dejavnosti	72.	obdelava podatkov, podatkovne baze in s tem povezane dejavnosti

persons working in enterprises, companies and organisations via contracts for work and citizens of the Republic of Slovenia permanently employed in Slovene embassies, on construction sites, etc., abroad;

- persons in paid employment at self-employed persons, at own account workers performing their activity as the only or principal occupation, and at natural persons making use of supplementary work of other people;
- self-employed persons: persons performing economic or gainful activity (individual private entrepreneurs) and own account workers performing their activity as the only or principal occupation (e.g. independent researchers).

The reference date, i.e. the date to which the data from the Statistical Register of Employment refer, is the last day of the observed month. The average of the year is one twelfth of the sum of the twelve months of the year.

More detailed explanations on persons in employment are available at the Labour Statistics Department of our Statistical Office.

Data processing

We impute data for enterprises that did not answer the questionnaire taking into account their register data on turnover in view of the levelled average ratio between the turnover in the current and the previous month of enterprises in the same stratum that answered the questionnaire. Data are weighted because of probability of selection and weights are corrected for the ratio between dead and new-born units in the population.

Results are published as value indices that are not seasonally and working day adjusted due to insufficiently long time-series. Indices are published at the level of aggregates for which the data are still representative.

Activities of the Standard Classification of Activities (SKD) to which the published data relate

Groups of service activities	SKD code	Activity level (division, group, class)
land transport	60.	land transport, transport via pipelines
water transport	61.	water transport
air transport	62.	air transport
supporting and auxiliary transport activities; activities of travel agencies	63.	supporting and auxiliary transport activities; activities of travel agencies
supporting and auxiliary transport activities	63.1	cargo handling and storage
	63.2	other supporting transport activities
	63.4	activities of other transport agencies
activities of travel agencies	63.3	activities of travel agencies & tour operators; tourist assistance nec.
post and telecommunications	64.	post and telecommunications
computer and related activities	72.	computer and related activities

Storitvene dejavnosti po skupinah in njim pripadajoče dejavnosti po SKD (nadaljevanje)

Skupine storitvenih dejavnosti	Šifra SKD	Raven dejavnosti (oddelek, skupina, razred)
poslovne dejavnosti	74. brez 74.15	druge poslovne dejavnosti
podjetniško svetovanje	74.11	pravno svetovanje
	74.12	računovodske, knjigovodske in revizijske dejavnosti, davčno svetovanje
	74.13	raziskovanje trga in javnega mnenja
	74.14	podjetniško in poslovno svetovanje
tehnično svetovanje	74.2	prostorsko načrtovanje, projektiranje in tehnično svetovanje
	74.3	tehnično preizkušanje in analiziranje
oglaševanje	74.4	oglaševanje
druge poslovne dejavnosti	74.5	dejavnost posredovanja in zaposlovanja delovne sile
	74.6	poizvedovalne dejavnosti in varovanje
	74.8	raznovrstne poslovne dejavnosti
čiščenje objektov in opreme	74.7	čiščenje objektov in opreme
druge storitvene dejavnosti	93.	druge storitvene dejavnosti

Activities of the Standard Classification of Activities (SKD) to which the published data relate (continued)

Groups of service activities	SKD code	Activity level (division, group, class)
enterprise activities	74. excl. 74.15	other business activities
enterprise consultancy	74.11	legal activities
	74.12	accounting, book-keeping and auditing activities; tax consultancy
	74.13	market research and public opinion polling
	74.14	business and management consultancy activities
technical consultancy	74.2	architectural & engineering activities & related technical consultancy
	74.3	technical testing and analysis
advertising	74.4	advertising
other enterprise activities	74.5	labour recruitment and provision of personnel
	74.6	investigation and security activities
	74.8	miscellaneous business activities not elsewhere classified
industrial cleaning	74.7	industrial cleaning
other service activities	93.	other service activities

Objavljanje

Mesečno:

- Prva statistična objava. Trgovina in druge storitvene dejavnosti
- Statistične informacije. Trgovina in druge storitvene dejavnosti. Indeksi prihodka v storitvenih dejavnostih

Publishing

Monthly:

- First Release. Distributive trade and other service activities
- Rapid Reports. Distributive trade and other service activities. Turnover indices for service activities

Sestavila / Prepared by: Mirjana Novak

Izdaja, založba in tisk Statistični urad Republike Slovenije, Ljubljana, Vožarski pot 12 - **Uporaba in objava podatkov dovoljena le z navedbo vira** - Odgovarja generalna direktorica mag. Irena Križman - Urednica zbirke Statistične informacije Marina Urbas - Urednica podzbirke Iris Rošker - Slovensko besedilo jezikovno uredila Ivanka Zobec - Angleško besedilo jezikovno uredil Boris Panič - Naklada 85 izvodov - ISSN zbirke Statistične informacije 1408-192X - ISSN podzbirke Trgovina in druge storitvene dejavnosti 1408-9327 - Informacije daje Informacijsko središče, tel.: (01) 241 51 04 - El. pošta: info.stat@gov.si - http://www.stat.si.

Edited, published and printed by the Statistical Office of the Republic of Slovenia, Ljubljana, Vožarski pot 12 - **These data can be used provided the source is acknowledged** - Director-General Irena Križman - Rapid Reports editor Marina Urbas - Subject-matter editor Iris Rošker - Slovene language editor Ivanka Zobec - English language editor Boris Panič - Total print run 85 copies - ISSN of Rapid Reports 1408-192X - ISSN of subcollection Distributive trade and other service activities 1408-9327 - Information is given by the Information Centre of the Statistical Office of the Republic of Slovenia, tel.: +386 1 241 51 04 - E-mail: info.stat@gov.si - http://www.stat.si.