



4 CENE
PRICES

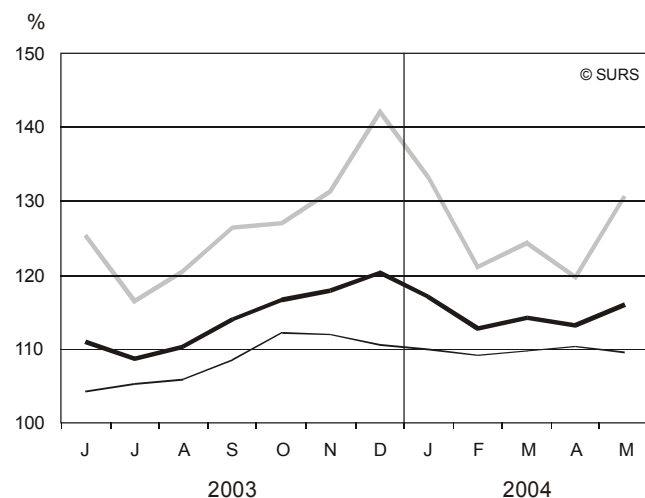
št./No 36

INDEKSI CEN KMETIJSKIH PRIDELKOV PRI PRIDELOVALCIH, SLOVENIJA, MAJ 2004
PRODUCER PRICE INDICES OF AGRICULTURAL PRODUCTS, SLOVENIA, MAY 2004

- ▶ Cene kmetijskih pridelkov pri pridelovalcih v letošnjem maju so bile povprečno za 1,8 % višje kot v maju preteklega leta (cene rastlinskih pridelkov so bile za 2,2 % nižje, cene živali in živalskih proizvodov pa za 4,0 % višje).
 - ▶ Zvišale so se cene:
 - krmnih rastlin (za 67,0 %),
 - krompirja (za 46,5 %),
 - žit (za 21,8 %),
 - živali za klanje (za 5,5 %),
 - živalskih proizvodov (za 1,9 %),
 - cvetja, okrasnih rastlin, sadik (za 1,2 %) in
 - vina (za 0,3 %).
 - ▶ Znižale so se cene:
 - zelenjadnic (za 17,0 %),
 - industrijskih rastlin (za 16,2 %) in
 - sadja (za 9,8 %).
- ▶ In comparison with May 2003, in May 2004 the prices of agricultural products increased by 1.8% (prices of crop output decreased by 2.2% and prices of animals and animal products increased by 4.0%).
 - ▶ Agricultural products whose prices increased were:
 - fodder plants (by 67.0%),
 - potato (by 46.5%),
 - cereals (by 21.8%),
 - animals for slaughter (by 5.5%),
 - animal products (by 1.9%),
 - flowers and ornamental plants (by 1.2%) and
 - wine (by 0.3%).
 - ▶ Agricultural products whose prices decreased were:
 - vegetables (by 17.0%),
 - industrial plants (by 16.2%) and
 - fruits (by 9.8%).

Slika 1: Mesečne stopnje rasti cen kmetijskih pridelkov, Slovenija, junij 2003- maj 2004 (2000=100)

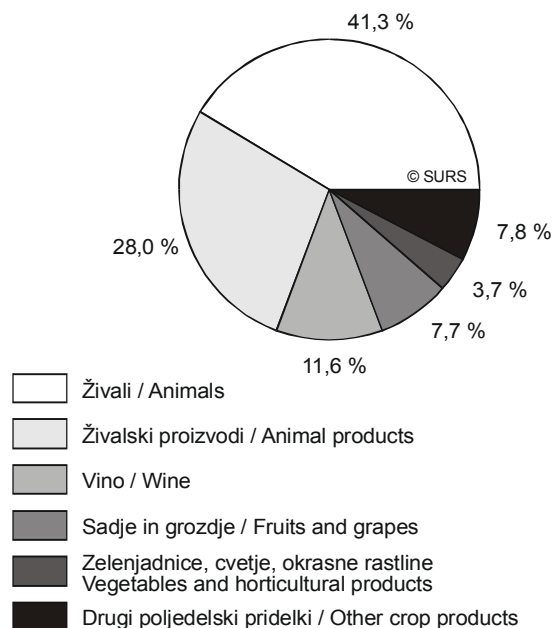
Chart 1: Monthly growth of prices of agricultural products, Slovenia, June 2003 - May 2004 (2000=100)



— Kmetijstvo skupaj / Agricultural goods output
— Rastlinski pridelki / Crop output
— Živali in živalski pridelki / Animals and animal products

Slika 2: Deleži glavnih skupin v indeksu cen kmetijskih pridelkov pri pridelovalcih, Slovenija, 2000

Chart 2: Shares of main groups in the producer price index of agricultural products, Slovenia, 2000



□ Živali / Animals
□ Živalski proizvodi / Animal products
□ Vino / Wine
□ Sadje in grozdje / Fruits and grapes
□ Zelenjadnice, cvetje, okrasne rastline / Vegetables and horticultural products
□ Drugi poljedelski pridelki / Other crop products

1. Indeksi cen in cene kmetijskih pridelkov pri pridelovalcih, Slovenija, maj 2004
 Producer price indices and prices of agricultural products, Slovenia, May 2004

	Utež Weights	Cena ¹⁾ Prices ¹⁾ (SIT)	Indeks / Index				
			V 2004 Ø 2000	V 2004 IV 2004	V 2004 V 2003		
010000	Žita (vključno seme)	3182	...	125,7	100,3	121,8	Cereals (including seeds)
011000	Pšenica in pira	2735	...	122,2	99,8	119,5	Wheat and spelt
011100	Pšenica, mehka, brez semenske	2735	38,05	122,2	99,8	119,5	Soft wheat
013100	Krmni ječmen	21	-	141,6	100,0	136,2	Feed barley
015000	Koruzna za zrnje	426	37,04	147,2	102,6	134,8	Grain maize
020000	Industrijske rastline	2977	...	108,4	96,5	83,8	Industrial plants
021000	Oljnice	555	...	122,9	85,2	79,6	Oil seeds
021100	Oljna ogrščica	67	-	163,3	100,0	112,9	Rape seed
021900	Druge oljnice	488	352,08	117,3	82,8	75,3	Other oleaginous products
024000	Sladkorna pesa	1460	-	131,8	100,0	101,4	Sugar beet
029000	Druge industrijske rastline	963	...	64,7	99,7	56,7	Other industrial crops
029200	Hmelj	963	-	64,7	99,7	56,7	Hops
030000	Krmne rastline	34	...	183,1	108,2	167,0	Forage plants
039000	Druge krmne rastline	34	...	183,1	108,2	167,0	Other forage plants
039100	Seno	10	37,76	328,4	116,0	263,0	Hay
039300	Koruzna za siliranje	24	-	120,2	100,0	116,9	Silage maize
040000	Zelenjadnice, cvetje, okrasne rastline	3718	...	135,6	98,0	86,5	Vegetables and horticultural products
041000	Zelenjadnice	2787	...	139,5	95,4	83,0	Fresh vegetables
041100	Cvetača in brokoli	108	159,33	150,3	187,0	100,5	Cauliflower
041200	Paradižnik	201	208,35	252,3	91,2	84,4	Tomatoes
041900	Zelenjadnice, drugo	2478	...	139,3	92,9	82,7	Other fresh vegetables
041910	Zelje	529	46,75	147,8	96,4	64,9	Cabbage
041920	Solata	564	154,01	154,2	84,9	114,2	Lettuce
041940	Kumare	105	156,14	228,6	77,6	95,3	Cucumbers
041950	Korenje	62	78,78	251,1	88,2	42,3	Carrots
041960	Čebula	247	136,83	257,8	102,9	95,8	Onions
041970	Fižol, stročji	67	-	-	-	-	Green beans
041980	Grah, svež	6	254,52	127,6	-	74,7	Green peas
041999	Druge sveže zelenjadnice	899	...	94,9	80,6	99,1	Other fresh vegetables
042000	Cvetje, okrasne rastline, sadike	931	...	124,1	108,0	101,2	Flowers and ornamental plants
050000	Krompir (vključno seme)	1270	...	259,2	171,5	146,5	Potatoes (including seeds)
051000	Krompir, jedilni	1213	...	290,2	100,4	149,5	Potato for consumption
051100	Krompir, jedilni, zgodnji	579	132,25	268,5	-	106,4	Potatoes for consumption, early
051200	Krompir, jedilni, pozni	633	79,11	321,6	111,3	293,0	Potatoes for consumption, late
052000	Krompir, semenski	58	117,94	151,8	173,9	129,4	Seed potatoes
060000	Sadjarstvo	7691	...	156,8	109,3	90,2	Fruits
061000	Sveže sadje	5609	...	156,8	109,3	90,2	Fresh fruit
061100	Jabolka, namizna	3848	70,47	116,6	87,7	62,4	Dessert apples
061200	Hruške, namizne	403	163,00	151,7	101,0	115,1	Dessert pears
061300	Breskve, namizne	227	-	-	-	-	Dessert peaches
061900	Sveže sadje-drugo	1131	...	161,1	69,1	93,2	Other fresh fruit
064900	Grozdje za predelavo	2082	-	-	-	-	Grapes for industry
070000	Vino	11563	...	105,1	110,5	100,1	Wine
071000	Vino, namizno	580	175,82	86,8	102,0	99,2	Table wine
072000	Vino, kakovostno	10983	387,30	106,0	110,9	100,2	Quality wine
080000	Oljčno olje	306	-	108,9	100,0	104,4	Olive oil
100000	RASTLINSKI PRIDELKI, VKLJUČNO SADJE IN ZELENJADNICE	30742	...	130,7	109,1	97,8	Crop output, including fruits and vegetables
101000	Rastlinski pridelki, brez sadja in zelenjadnic	19333	...	119,3	111,7	105,4	Crop output, excluding fruits and vegetables

1) Cene so izražene v SIT na mersko enoto: liter (070000 Vino, 080000 Oljčno olje, 12110 Mleko, kravje), kos (122000 Jajca) oziroma kg (vsi ostali navedeni kmetijski pridelki).
Prices are expressed in SIT per unit: litre (070000 Wine, 080000 Olive oil and 12110 Cows milk), piece (122000 Eggs) or kilogram (all other products).

1. Indeksi cen in cene kmetijskih pridelkov pri pridelovalcih, Slovenija, maj 2004 (nadaljevanje)

Producer price indices and prices of agricultural products, Slovenia, May 2004 (continued)

	Uteži Weights	Cene Prices (SIT)	Indeks / Index			
			V 2004 Ø 2000	V 2004 IV 2004	V 2004 V 2003	
110000 Živali	41274	...	107,3	99,9	105,5	Animals
111000 Govedo	15947	...	92,7	101,3	95,1	Cattle
111100 Govedo, brez telet	35031	...	92,7	101,5	95,2	Cattle excluding calves
111200 Teleta	1469	455,18	93,3	100,3	94,0	Calves
111300 Biki	11068	284,16	96,8	101,1	95,1	Bulls
112000 Prašiči	11980	...	93,8	94,5	108,6	Pigs
112200 Pitani prašiči, 50-150 kg	11665	237,34	93,8	94,5	109,2	Fattening pigs, 50-150 kg
113000 Konji	265	371,92	112,7	100,3	97,6	Equines
114000 Ovce in koze	547	435,27	106,9	101,9	88,5	Sheep and goats
115000 Perutnina	12438	...	138,6	102,4	115,2	Poultry
115100 Pitani piščanci	9800	216,48	135,9	103,8	115,5	Chickens
115900 Druga perutnina	2639	...	148,3	97,7	113,8	Other poultry
119000 Druge živali (kunci)	97	421,69	153,6	100,2	106,5	Other animals(rabbits)
120000 Živalski proizvodi	27984	...	112,7	98,5	101,9	Animal products
121100 Mleko, kravje	24593	66,26	111,4	98,3	100,9	Cows milk
122000 Jajca	2860	18,17	116,6	98,0	108,5	Eggs
129000 Drugi živalski proizvodi (surove goveje in telečje kože ter med)	532	...	151,6	106,1	111,0	Other animal products (raw cattle and calves hides and honey)
130000 ŽIVALI IN ŽIVALSKI PROIZVODI	69259	...	109,5	99,3	104,0	ANIMALS AND ANIMAL PRODUCTS
140000 KMETIJSTVO SKUPAJ, S SADJEM IN ZELENJADNICAMI	100000	...	116,0	102,5	101,8	AGRICULTURAL GOODS OUTPUT, INCLUDING FRUITS AND VEGETABLES
141000 Kmetijstvo skupaj, brez sadja in zelenjadnic	88591	...	111,6	101,9	104,3	Agricultural goods output, excluding fruits and vegetables

METODOLOŠKA POJASNILA

Namen statističnega raziskovanja

Z indeksom cen kmetijskih pridelkov prikazujemo mesečna in letna gibanja cen v odkupu kmetijskih pridelkov. Indeksi kmetijskih cen se uporabljajo v zvezi z analizo dohodkov v kmetijstvu ter v okviru ekonomskih računov za kmetijstvo (ERK); cene pa za primerjavo ravni cen v posameznih državah.

Viri podatkov

Vir podatkov za izračun indeksov odkupnih cen so mesečna poročila o odkupu oziroma prodaji pridelkov od pridelovalcev (to so podjetja, zadruga in druge organizacije).

Zajetje

Izbrani so le tisti pridelki, ki predstavljajo pomemben delež v odkupu oziroma prodaji. V izboru reprezentativnih pridelkov so zajeti sezonski in nesezonski pridelki.

Definicije in druga pojasnila

Uteži nesezonskih pridelkov (žita, industrijske rastline, krmne rastline, krompir, vino, oljčno olje in drugi poljedelski pridelki, živali in živalski proizvodi) so enake za vse mesece v letu, uteži sezonskih pridelkov (sadje in zelenjadnice) pa so za vsak mesec različne.

Cene spremljamo v prvi fazi trženja, ker najbolje prikazujejo dejanske cene pri pridelovalcu.

V primerih, ko za določen mesec cena ni na voljo, za izračun indeksa vzamemo zadnjo evidentirano ceno.

Sadje in zelenjava so izrazito sezonski pridelki. Manjkajočih cen ni

METHODOLOGICAL EXPLANATIONS

Purpose of the statistical survey

Producer price indices of agricultural products show monthly changes of prices in purchase of agricultural products. Agricultural price indices are used above all in relation with agricultural income and in the framework of the Economic Accounts for Agriculture (EAA); and the prices for comparison of the price level between countries.

Data sources

The main data source are data from the survey of purchase or sale of agricultural products. Data are submitted monthly to the Statistical Office by enterprises, co-operatives and other organisations.

Coverage

Selected are only products which represent an important share in the purchase or sale. The list of representative products includes seasonal and nonseasonal products.

Definitions and other explanations

The weights for nonseasonal products (cereals, industrial plants, fodder plants, potatoes, wine, olive oil and other crop products, animals and animal products) are equal for each month of the year, while the weights for seasonal products (fruits, vegetables and ornamental plants) are different depending on the month.

The prices are recorded at the first marketing stage to best indicate the actual producer prices received by farmers

In the case of missing price we use repetition of the last recorded price.

Fruits and vegetables are extremely seasonal products. The problem of



mogoče nadomestiti s ponovitvijo zadnjih evidentiranih cen, zato v takih primerih uporabljamo spremenljive mesečne uteži, ki so odvisne od obdobja trženja posameznih pridelkov.

V cenah niso upoštevani DDV in dodatki (subvencije in podpore), ki jih dobijo pridelovalci za določene pridelke. Prav tako niso upoštevani stroški organizacije v zvezi s prevzemom in prevozom pridelkov, uskladiščenjem, stroški vračljive embalaže in olajšave, ki jih organizacije odobrijo kupcem.

Indekse cen kmetijskih pridelkov pri pridelovalcih izračunavamo po Laspeyresovi formuli. V izračunu indeksov cen uporabljamo utežene cene, ki jih izračunamo iz mesečnih obdelav odkupa kmetijskih pridelkov, letne cene za posamezne pridelke pa dobimo iz uteženih mesečnih cen.

Doslej uporabljeno metodologijo izračuna indeksov cen, ki je v dokajšnji meri sledila priporočilom Eurostata, smo z letom 2004 uskladili z metodologijo Eurostata. Na osnovi baznega leta 2000 so narejeni tudi novi preračuni za leta 2000-2003. Na novo so izračunane uteži za kmetijske pridelke, in sicer smo za rastlinske pridelke upoštevali podatke odkupa in Popisa kmetijstva. Pri sadju in zelenjadnicah smo upoštevali intenzivno pridelavo. Pri živini smo poleg odkupa upoštevali tudi zakol v klavnicah. Pridelke smo ovrednotili in izračunali uteži glede na njihovo vrednost v celotni vrednosti. Sistem uteži se bo spreminjal vsakih pet let. S primerjavo mesečnih cen na cene baznega leta 2000 izračunamo mesečne indekse za vsak pridelek posebej in preko teh indekse skupin in skupni indeks.

Objavljanje rezultatov

Mesečno:

- Statistične informacije. Cene. Indeksi cen in cene kmetijskih pridelkov pri pridelovalcih

the periodic absence of prices could not be solved by repeating the last recorded prices. Therefore, we use the method of variable monthly baskets, depending on the period of marketing of products.

Prices do not include VAT (subsidies and supports), which producers obtain for certain products. Manipulation costs related to the delivery of agricultural products, storage, costs of returnable packaging and other payment facilities granted to the buyer are not included

The compilation of the agricultural producer **price index** is based on Laspeyres formula. In calculation, we use weighted prices, compiled from monthly prices of purchase of agricultural products, while annual prices are compiled from weighted monthly prices.

The methodology of calculating producer price indices used until 2003 was in 2004 implemented by the methodology of Eurostat. On 2000 as the base year we calculated indices also for the 2000-2003 period. New weights of individual agricultural products were calculated, for agricultural products with respect to the total purchase and intensive production of fruits and vegetables; by livestock purchase and slaughter of animals in slaughterhouses. Weights for individual products are calculated with respect to the total value of purchase. Every five years the weights will be recalculated. Comparing monthly prices with the prices of the base year 2000 we calculate individual indices for each individual product. From individual indices, we calculate aggregate indices, i.e. indices of groups and the total index.

Publishing

Monthly:

- Rapid Reports. Prices. Producer Price Indices and Prices of Agricultural Products

Sestavila / Prepared by: Marija Sluga

Izdaja, založba in tisk Statistični urad Republike Slovenije, Ljubljana, Vožarski pot 12 - **Uporaba in objava podatkov dovoljena le z navedbo vira** - Odgovarja generalna direktorica mag. Irena Križman - Urednica zbirke Statistične informacije Marina Urbas - Slovensko besedilo jezikovno uredila Ivanka Zobec - Angleško besedilo jezikovno uredil Boris Panič - Tehnični urednik Anton Rojc - Naklada 135 izvodov - ISSN zbirke Statistične informacije 1408-192X - ISSN podzbirke Cene 1408-8894 - Informacije daje Informacijsko središče, tel.: (01) 241 51 04 - El. pošta: info.stat@gov.si - <http://www.stat.si>.

Edited, published and printed by the Statistical Office of the Republic of Slovenia, Ljubljana, Vožarski pot 12 - **These data can be used provided the source is acknowledged** - Director-General Irena Križman - Rapid Reports editor Marina Urbas - Slovene language editor Ivanka Zobec - English language editor Boris Panič - Technical editor Anton Rojc - Total print run 135 copies - ISSN of Rapid Reports 1408-192X - ISSN of subcollection Prices 1408-8894 - Information is given by the Information Centre of the Statistical Office of the Republic of Slovenia, tel.: +386 1 241 51 04 - E-mail: info.stat@gov.si - <http://www.stat.si>.