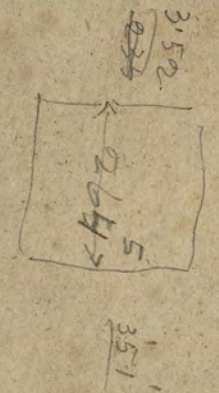
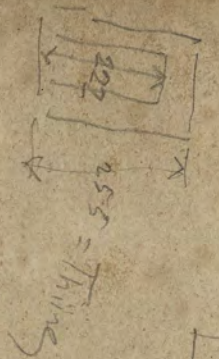
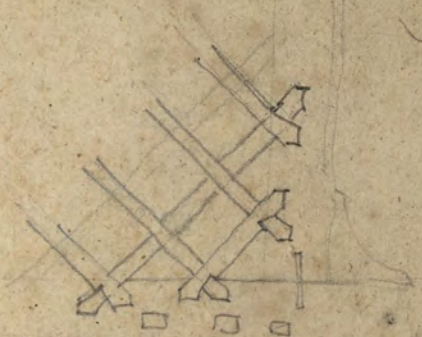


ARHITEKTURNI MUZEJ LJUBLJANA

inv. št. 1709

A 21

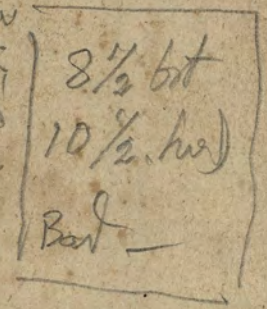
Lespari Hollega - ft. se + ng
Koblen



Agilar. 13x33

hock

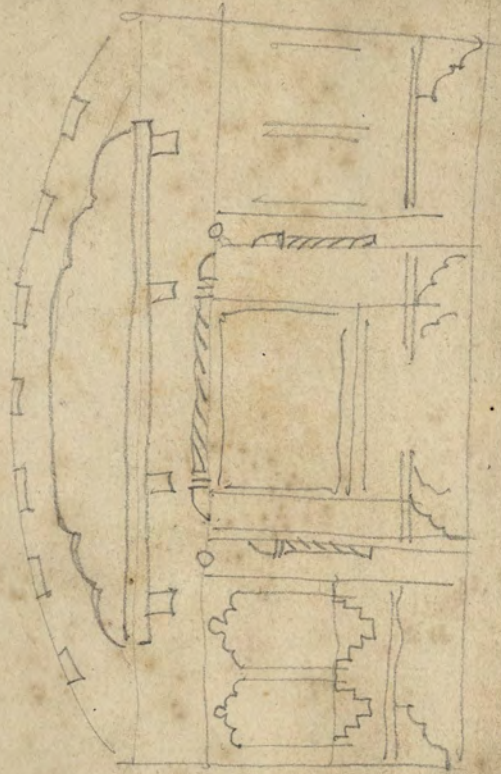
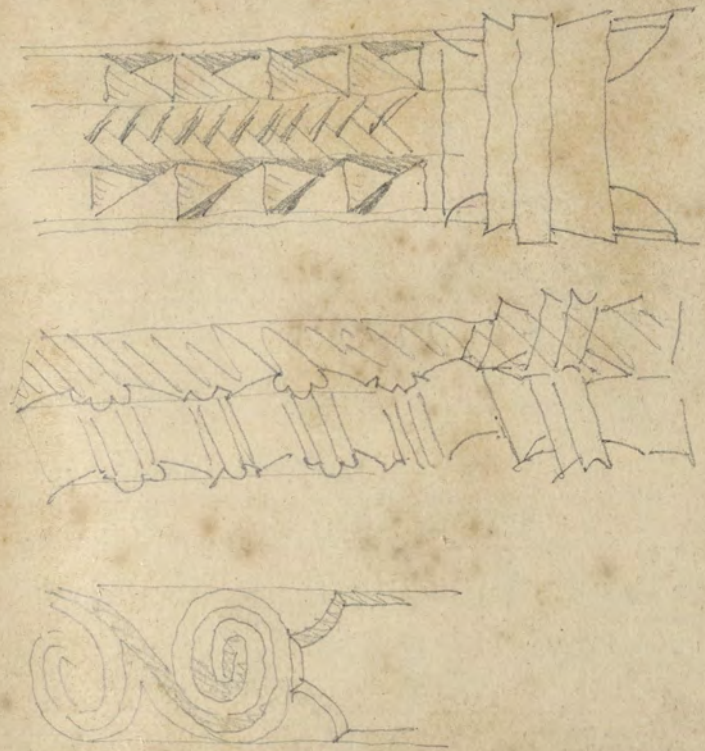
3.52
3.52
3.52

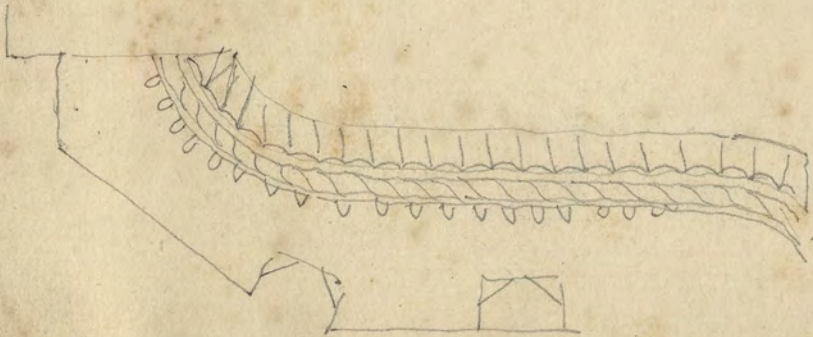
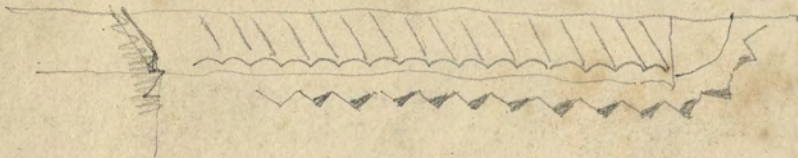
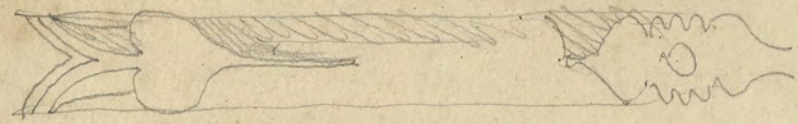


ceмент
pepel

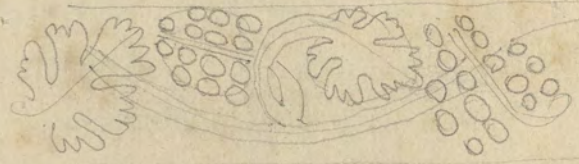
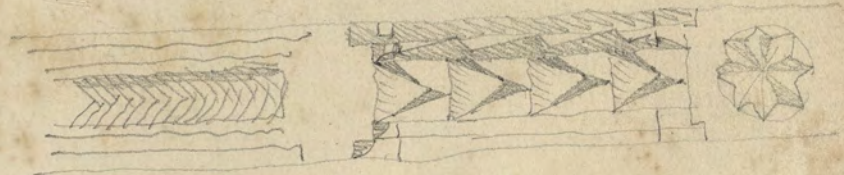
1. Lomana zbirgana

ARHITEKTURNI MUZEJ LJUBLJANA



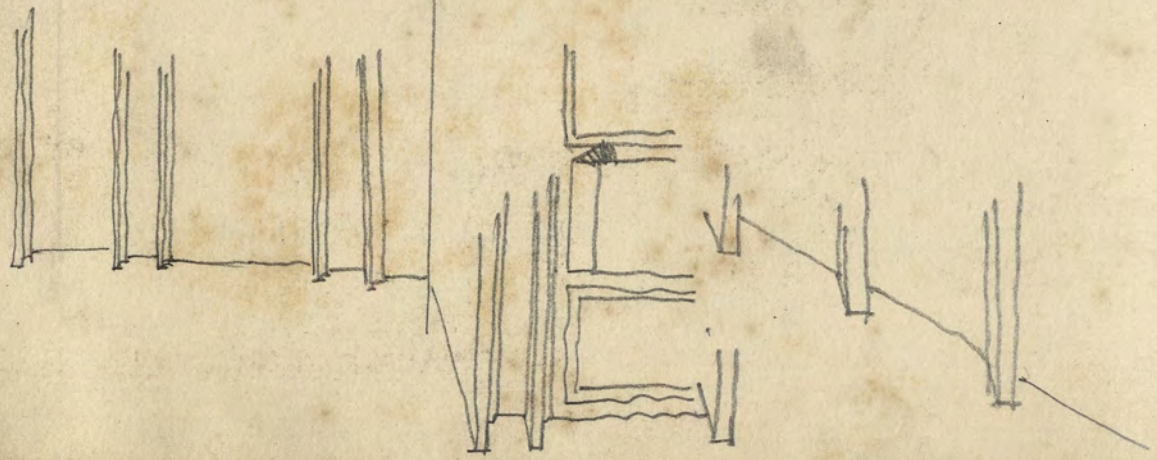


ARHITEKTURNE
MUZEJ
LJUBLJANA

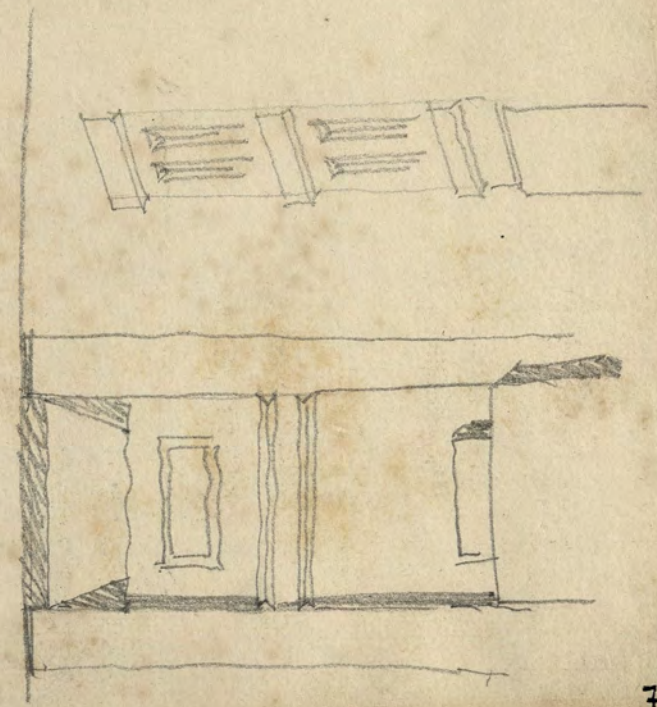
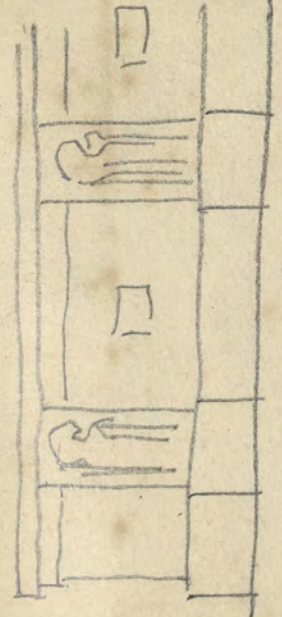


MUZEJ LJUBLJANA

5
91

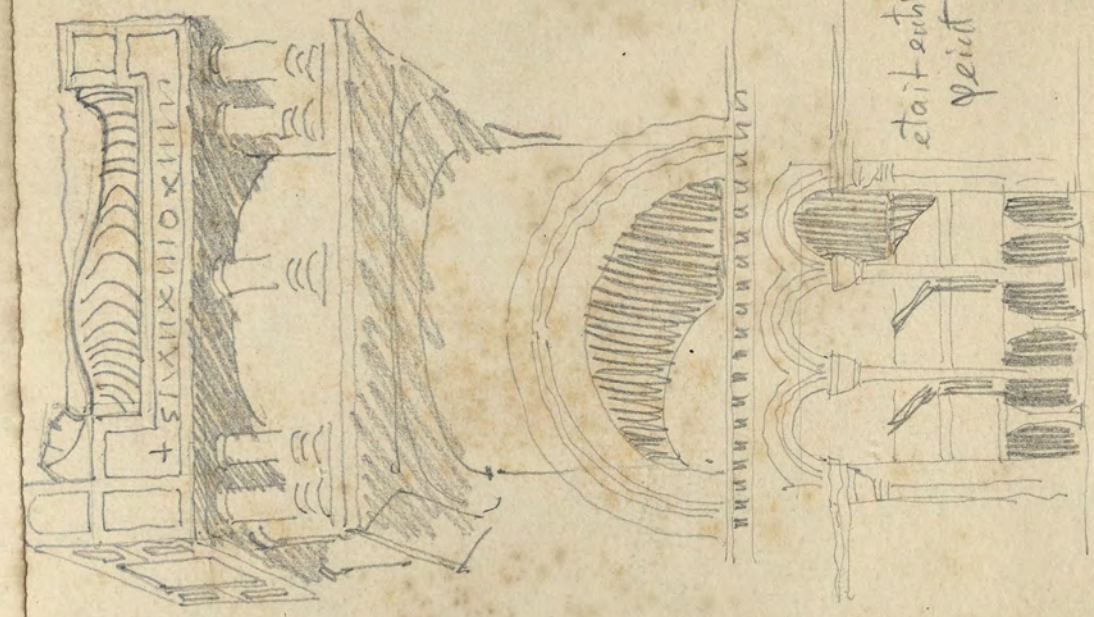
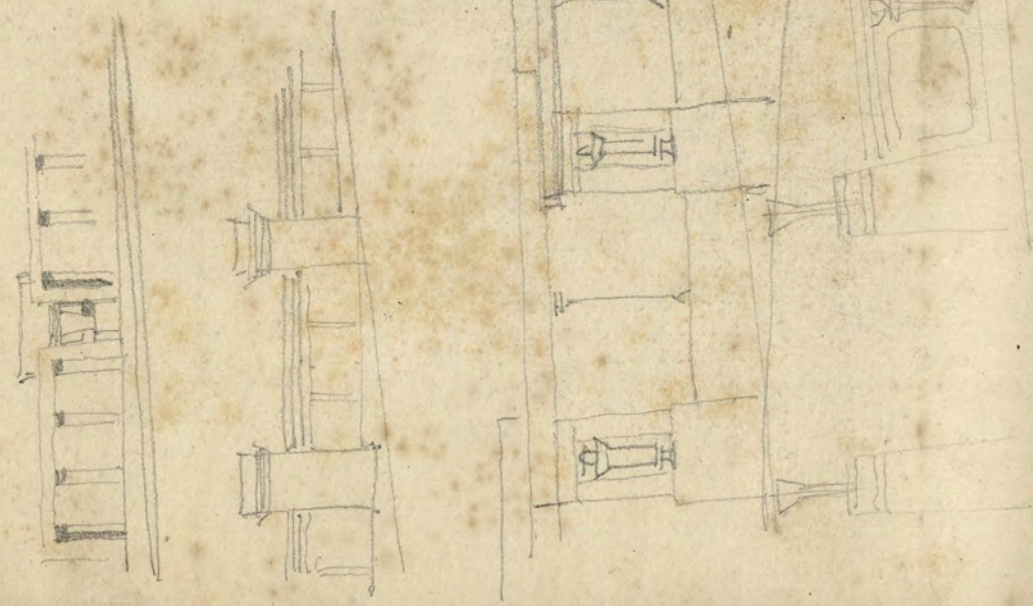


Architectura
INSTRUMENTA

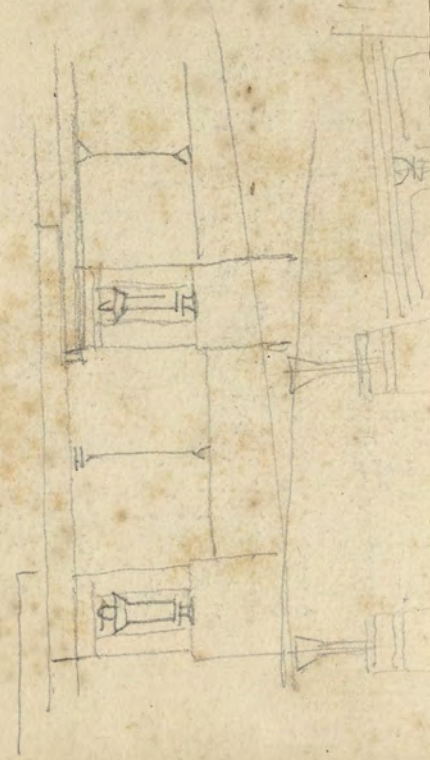
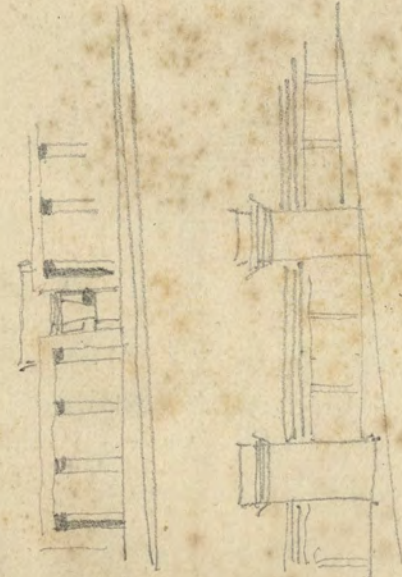


MICHAEL BURTON

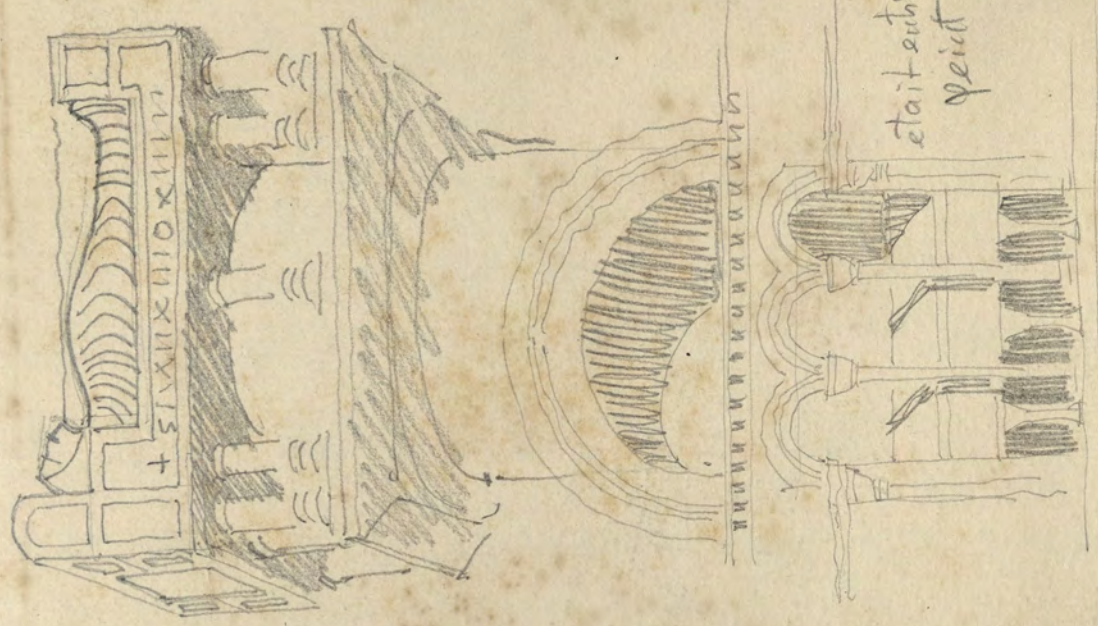
7
6



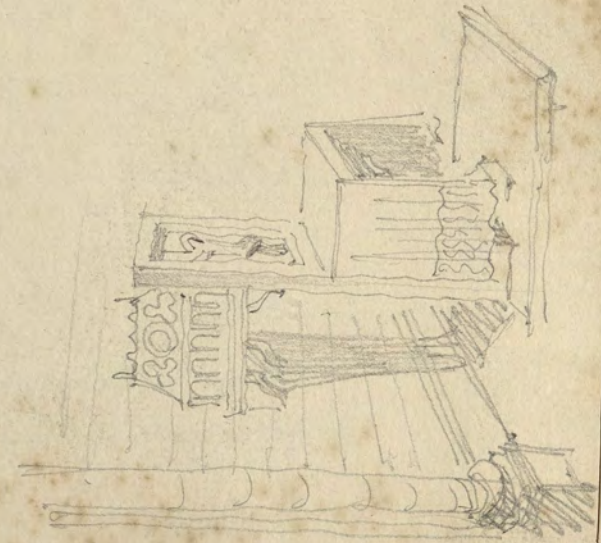
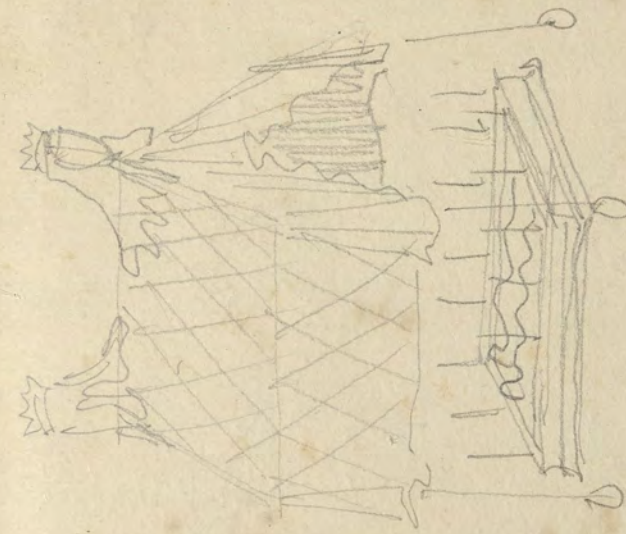
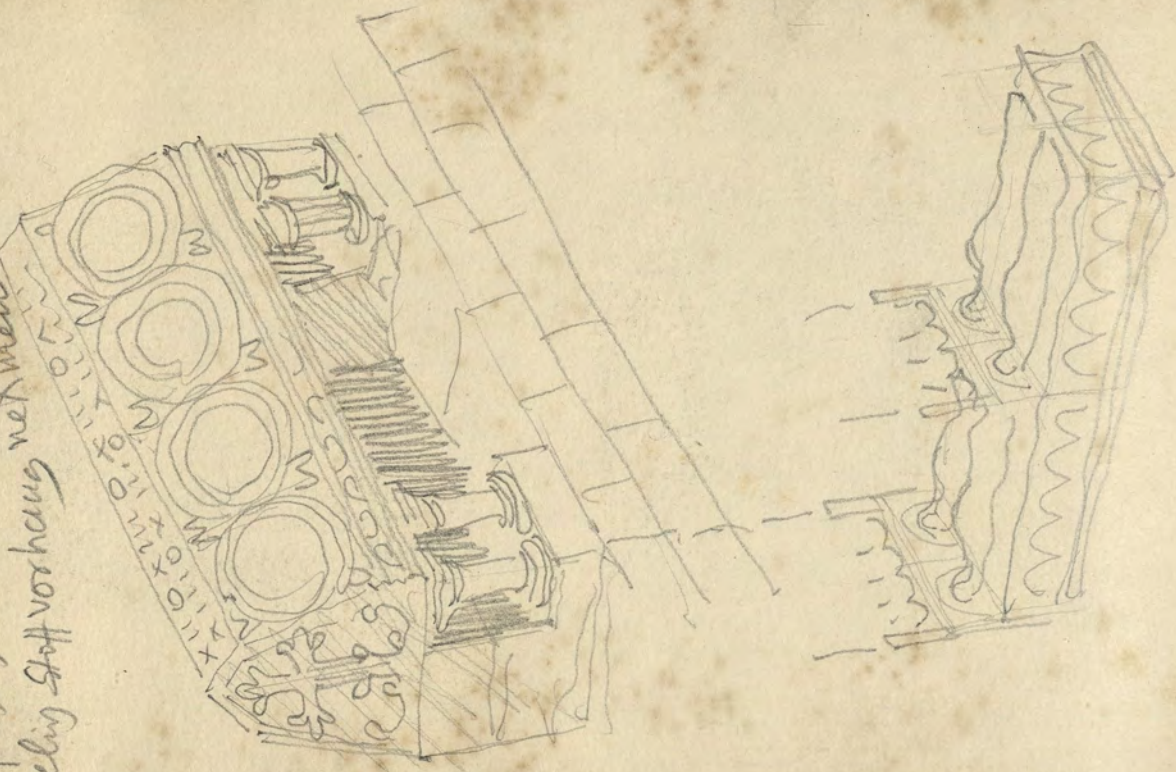
stait eninément
peit



Bordeaux St. Severini

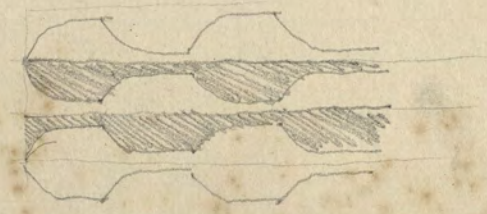
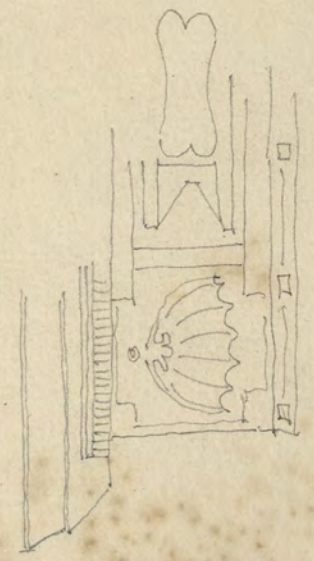


Statt plastischen weu nötig
wirbelig Stoffvorhang nehmen

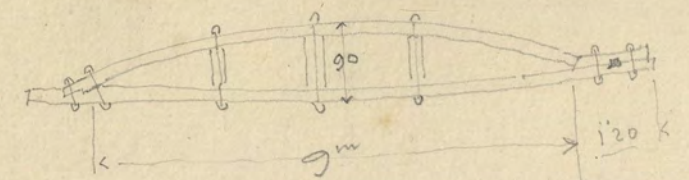
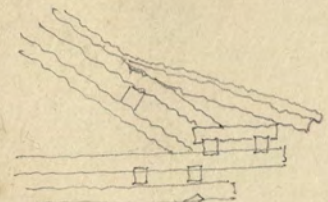




ARHITEKTURNI
MUZEJ
LJUBLJANA

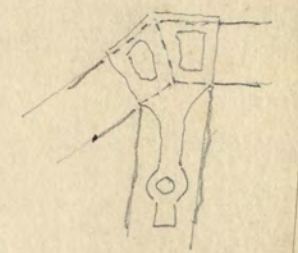
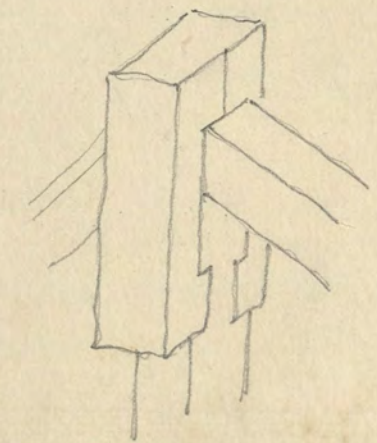
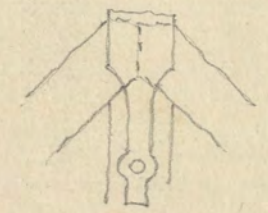
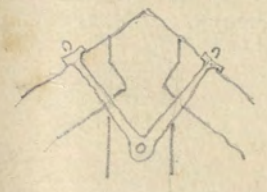
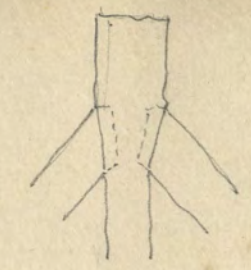
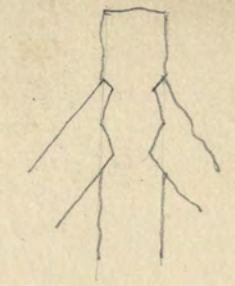
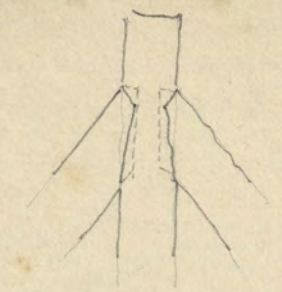
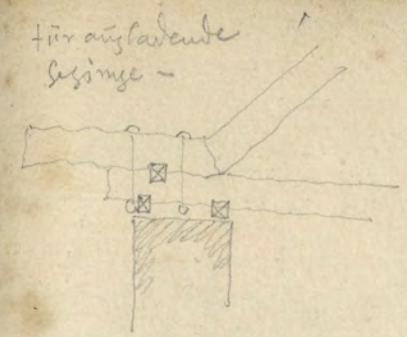
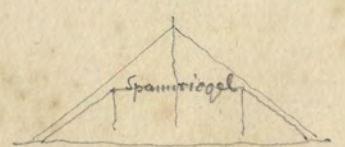
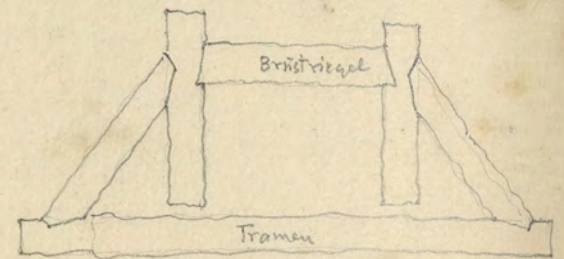
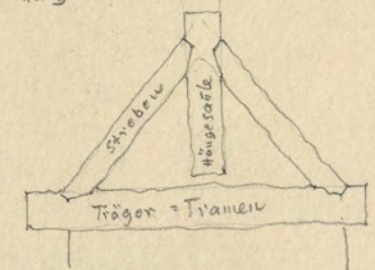


ARHITEKTURNI
MUZEJ
LJUBLJANA

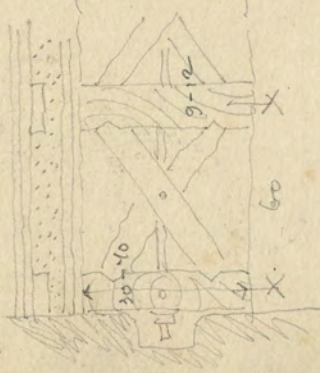
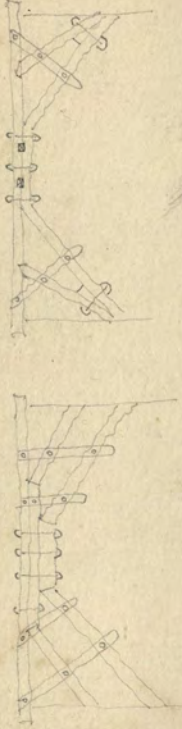


Einfacher Hängewerk = Hängebock

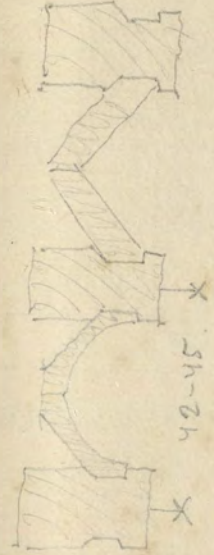
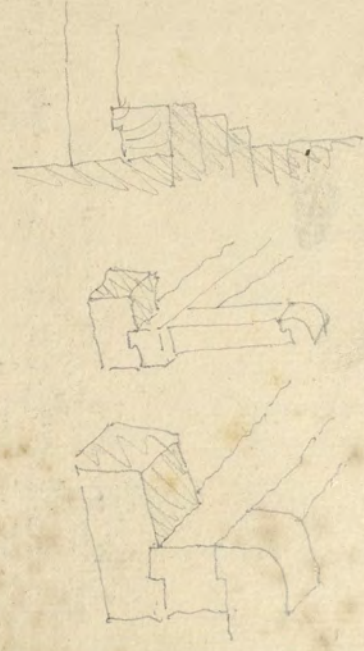
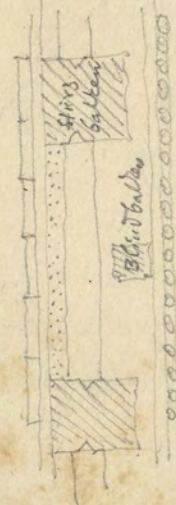
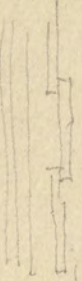
Doppelter Hängebock



Spriegelwerke



Boxbau Balkenbock



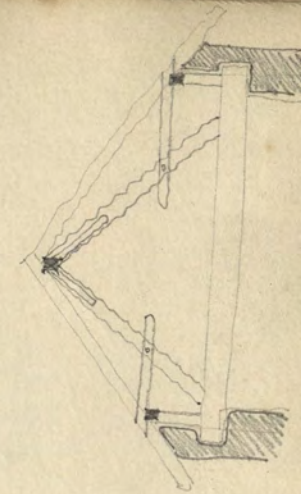
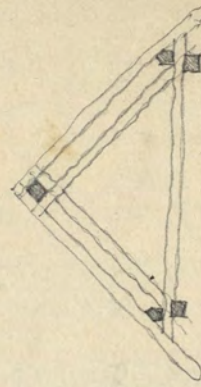
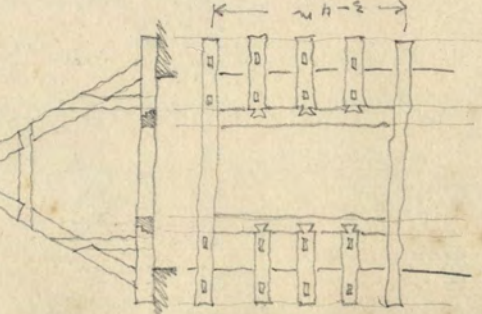
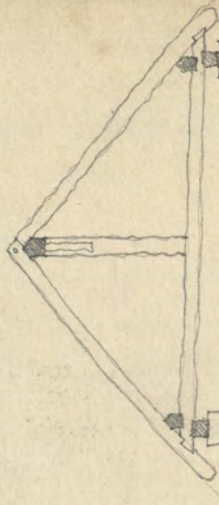
System Laporte



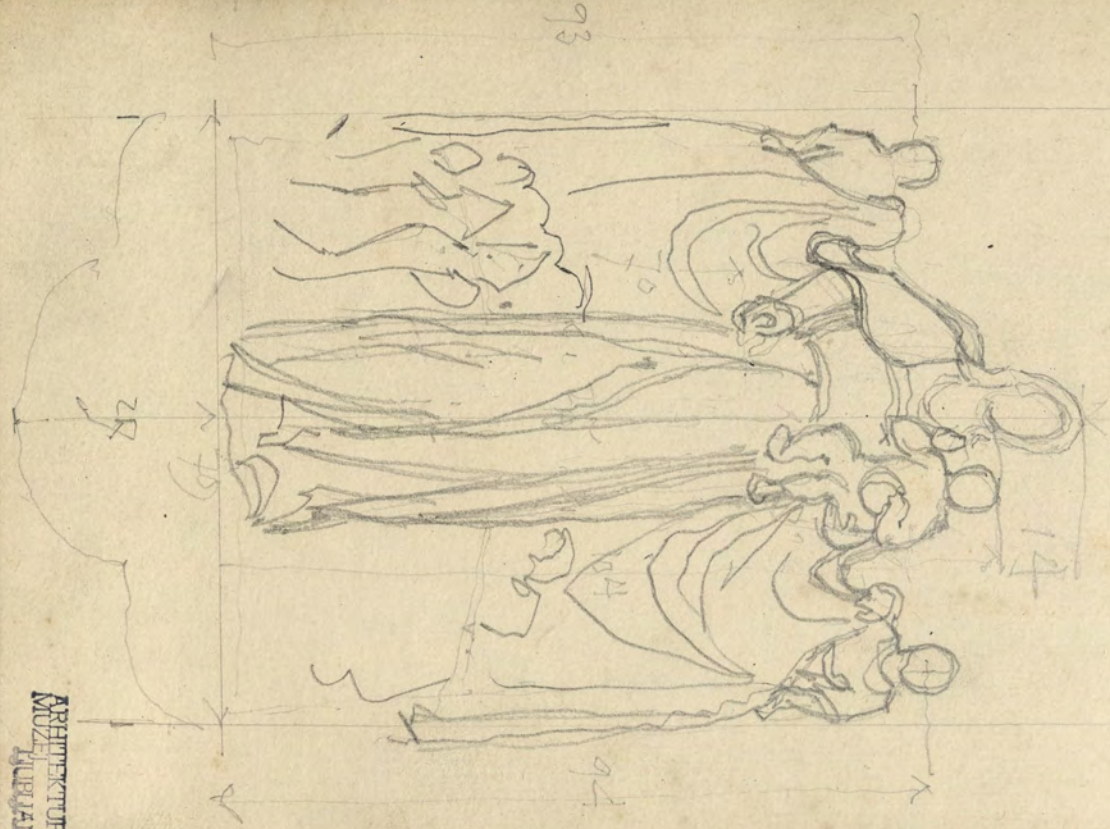
Deutsche Bauzeitung 1886

subr. Holzsysteme

Eigenes Gewicht d. Decke 70-95kg



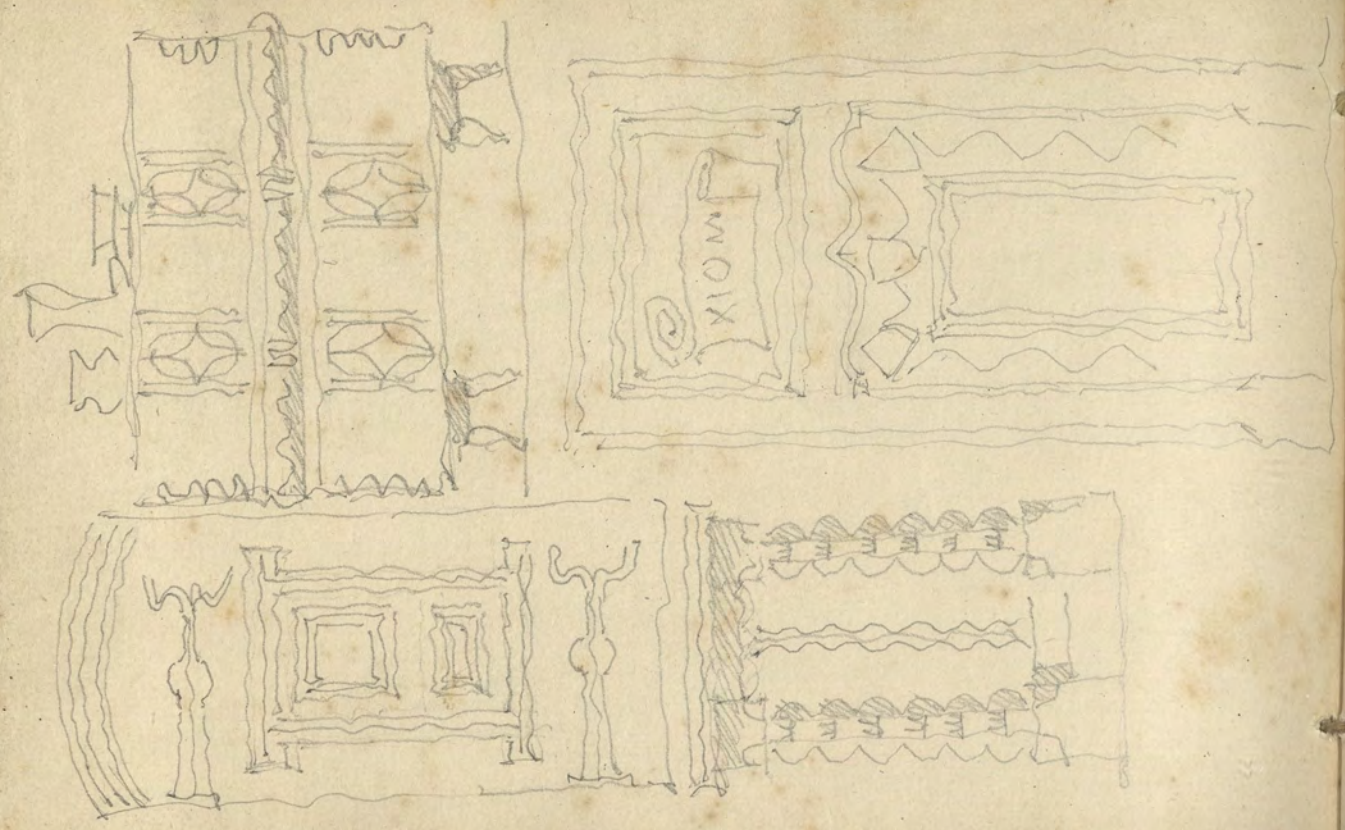
ARHITEKTURNI
MUZEJ
LJUBLJANA



A H
KLIXNIC



ARHITEKTURNI
MUZEJ
LJUBLJANA



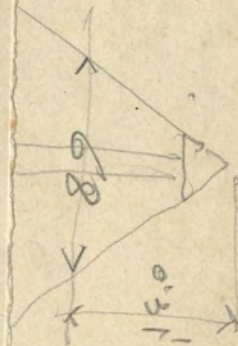


УОДШУШ
УОДУСРПЕБ
ДУБШНОФ

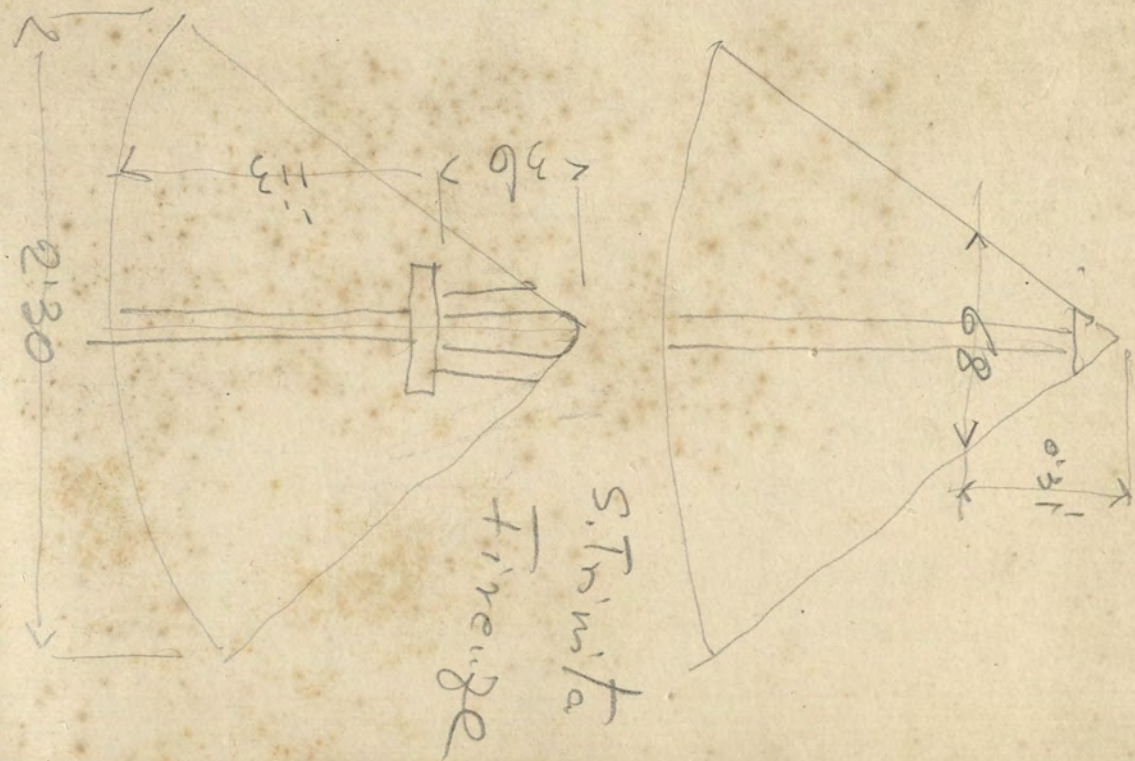
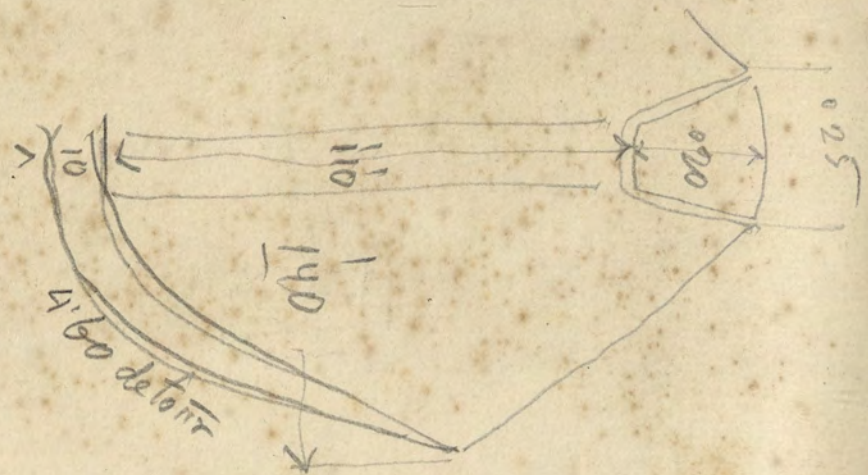


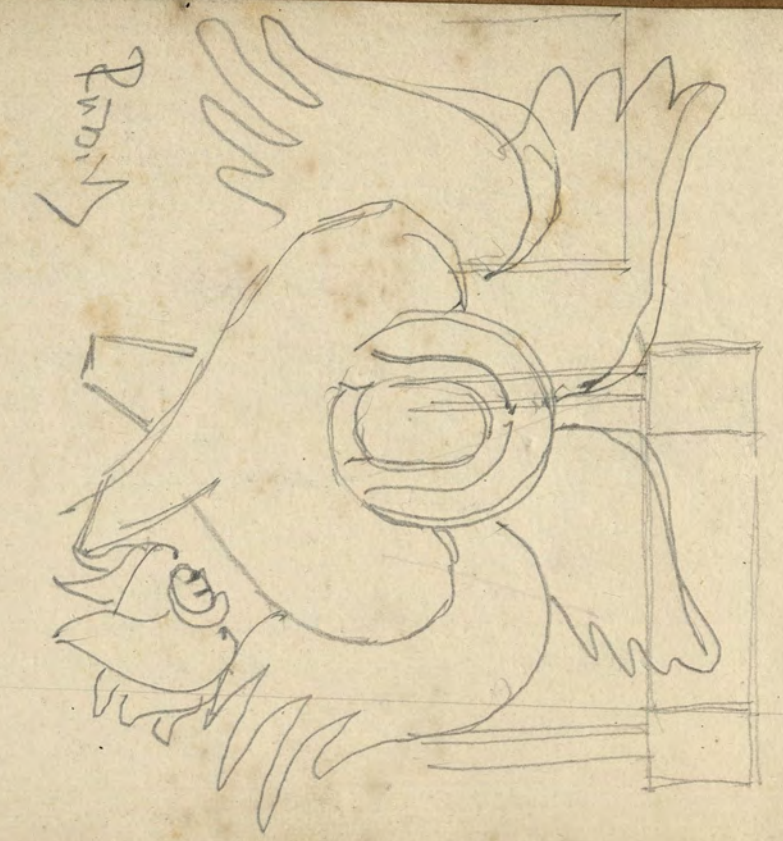
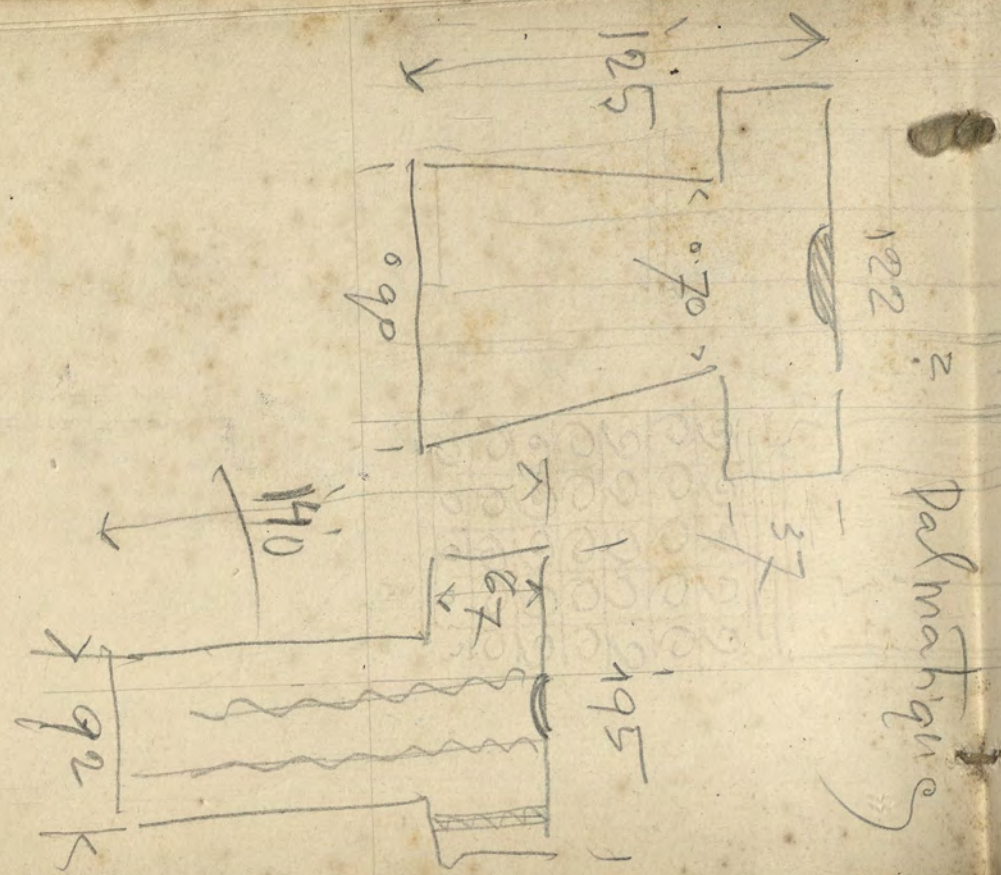
ARHITEKTURNI
MUZEJ
LJUBLJANA

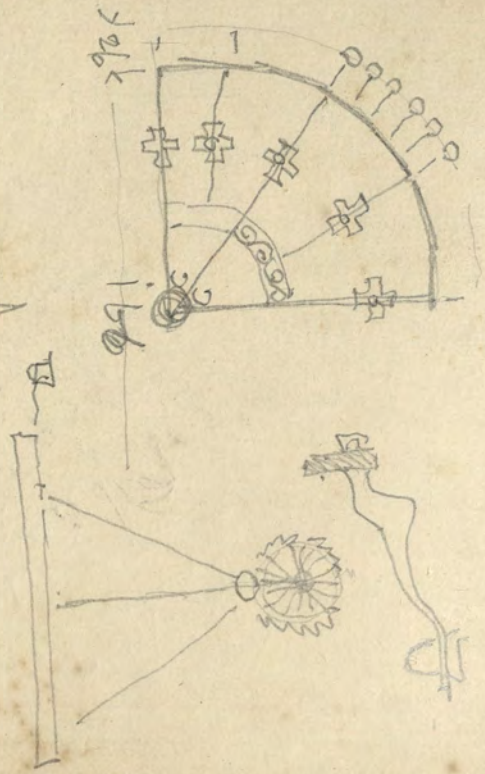
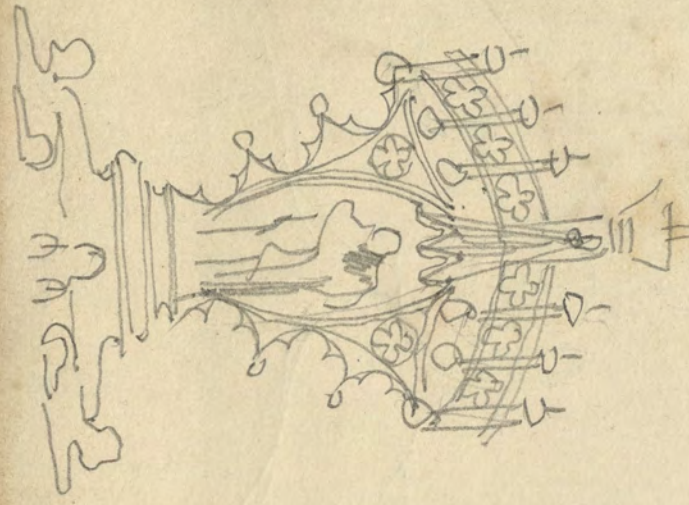
25



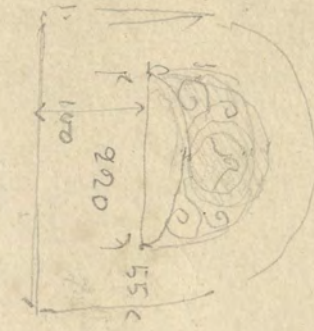
27





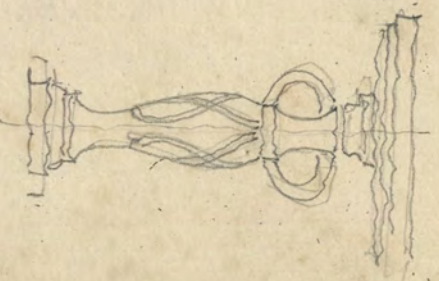
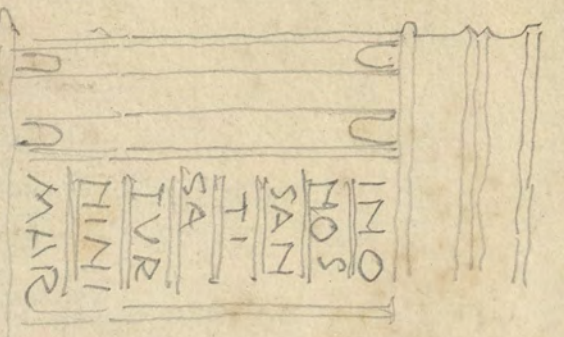


IV arce - St. Jean de Lafran



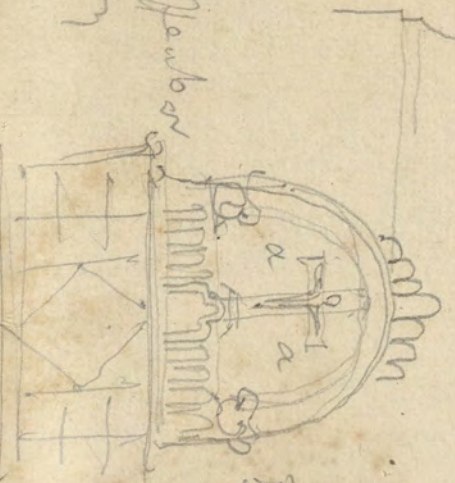
Maples - St. Jan de lafran

St. Sathamin
1056



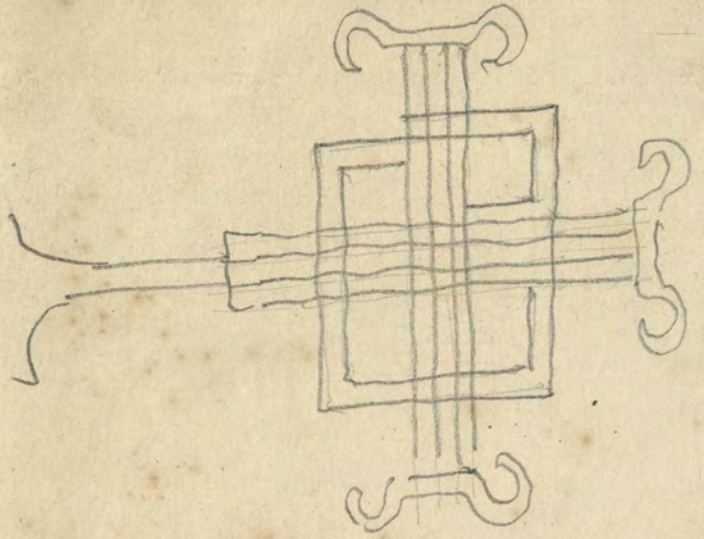
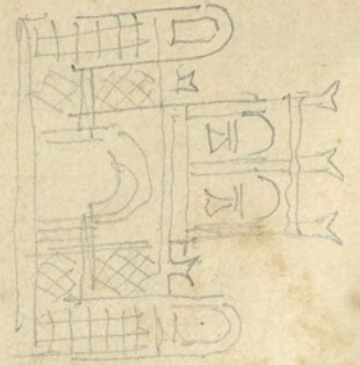
ARHITEKTURNI
MUSEJ Ljubljana

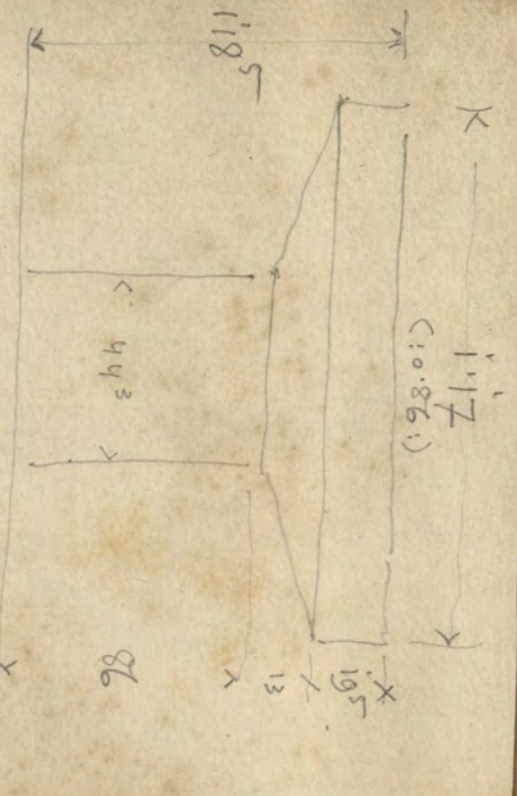
a a Graben
Open



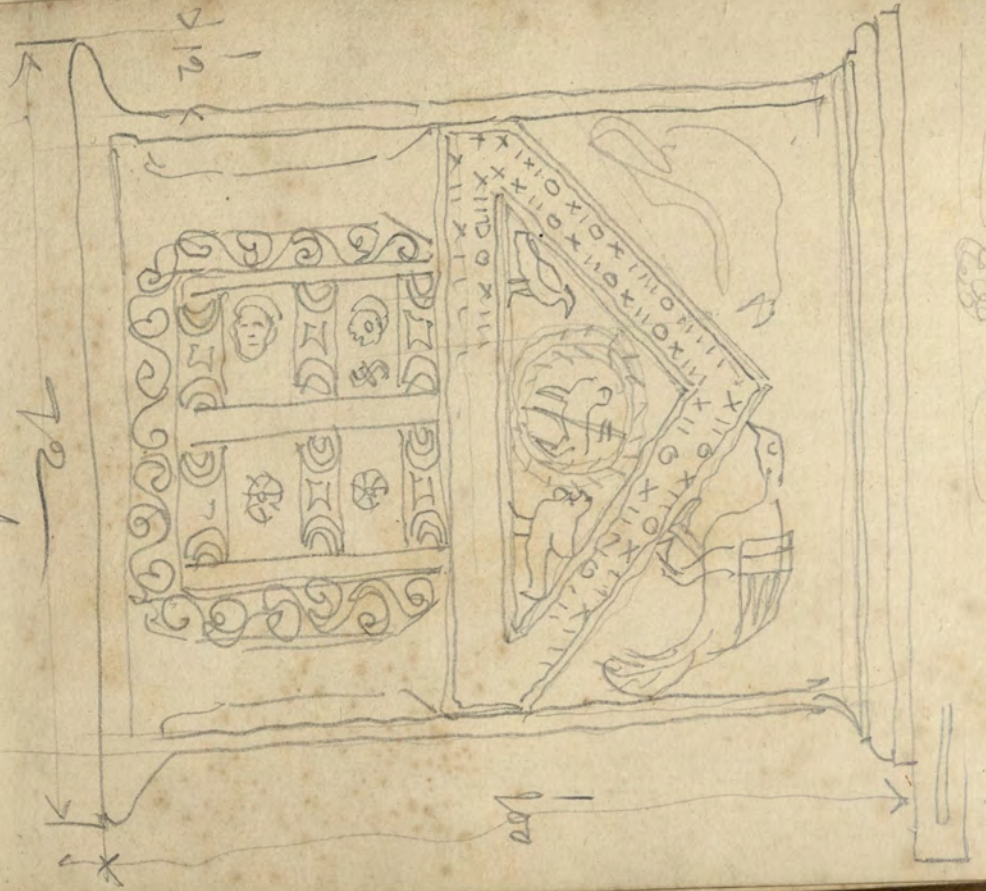
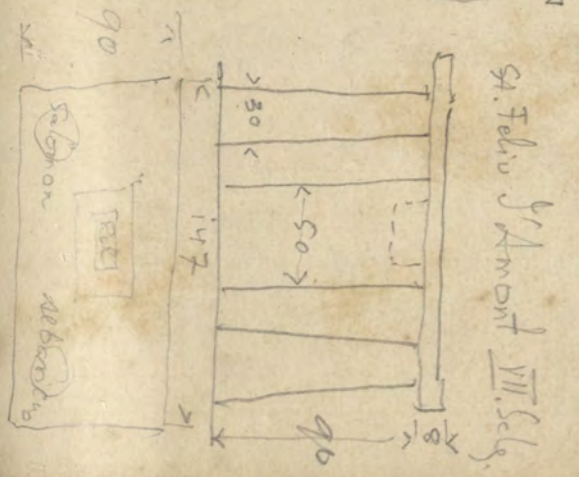
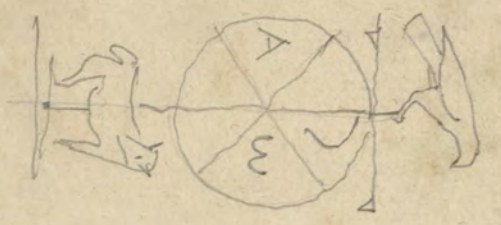
St. Singelharth

XII. Sieck
Siebeck
Dänemark





Grund — San. Matteo — Peronne



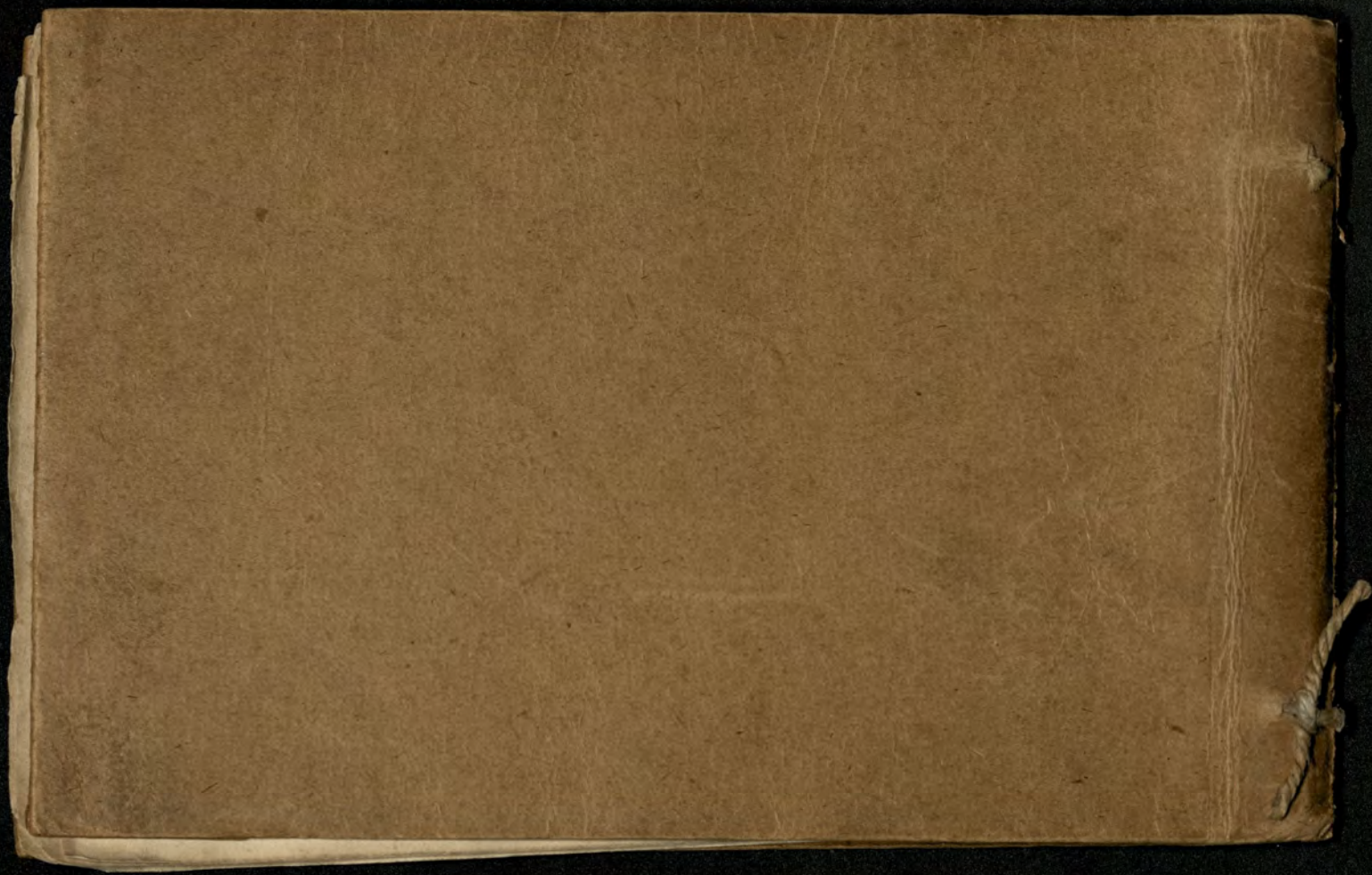
Roma - St. Maria di Priore

A 21

Saint P. H. maison
1.60 pres de gar des 1. Vair d'itras //

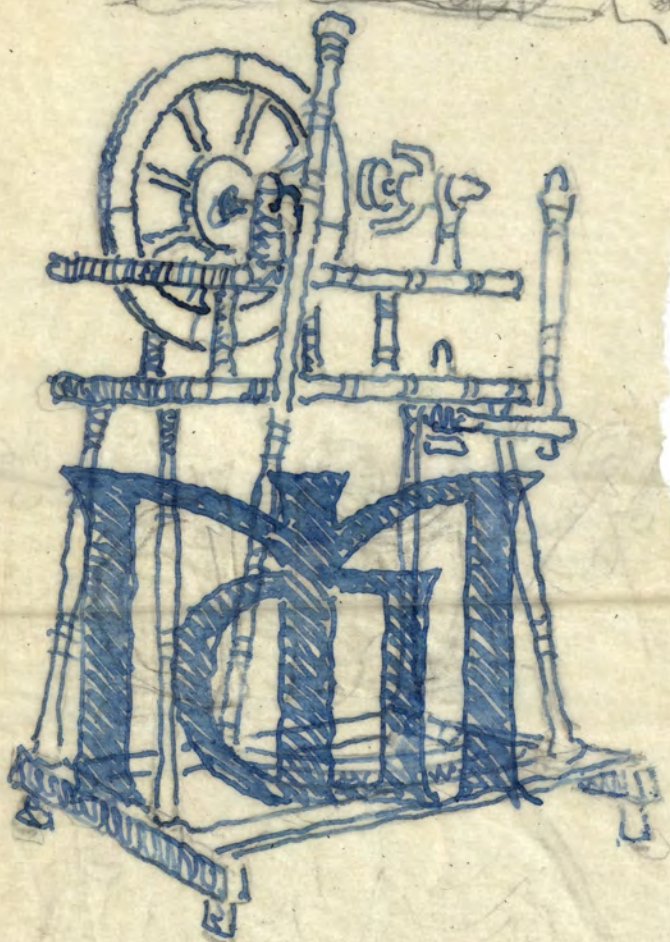


Autel avec la voile qui court
les saints Sopées -





24



inv. št. 1109
ARCHITEKTURNI
MUZEJ
LJUBLJANA