

# Early Neolithic population dynamics in the Eastern Balkans and the Great Hungarian Plain

Tamara Blagojević<sup>1</sup>, Marko Porčić<sup>1,2</sup>, Kristina Penezić<sup>1</sup> and Sofija Stefanović<sup>1,2</sup>

<sup>1</sup> Bioarchaeology Group, Institute Biosense – the Research and Development Institute for Information Technologies  
in Biosystems, University of Novi Sad, Novi Sad, RS

tamara.blagojevic@biosense.rs

<sup>2</sup> Laboratory for bioarchaeology, Department of Archaeology, Faculty of Philosophy,  
University of Beograd, Beograd, RS

**ABSTRACT** – *In this study, we reconstruct population dynamics in the Early Neolithic of the Eastern Balkans and the Great Hungarian Plain using frequency of radiocarbon dates as a population proxy. The method of summed calibrated radiocarbon probability distributions is applied to a set of dates recently published in Bulgaria and Hungary. The aim is to test the hypothesis of the Neolithic demographic transition (NDT) in these regions and to compare the patterns between these two and neighbouring regions. The results show that episodes of population growth occurred in both regions, which is in partial agreement with the predictions of the NDT theory. Population growth is detected, but it is followed by a bust, rather than stabilisation as predicted for the second phase of the NDT.*

**KEY WORDS** – *Early Neolithic; Neolithic demographic transition; palaeodemography; radiocarbon; Southeast Europe*

## Zgodnje neolitske dinamike poselitve na Vzhodnem Balkanu in v Veliki madžarski nižini

**IZVLEČEK** – *V članku poskušamo rekonstruirati populacijske dinamike v času zgodnjega neolitika na območju vzhodnega Balkana in Velike madžarske nižine, in sicer z uporabo pogostnosti radiokarbonskih datumov kot kazalcev poselitve. Metodo vsote verjetnostne razporeditve kalibriranih radiokarbonskih datumov smo uporabili pri analizi datumov, ki so bili nedavno objavljeni v Bolgariji in na Madžarskem. Na teh območjih smo preverjali hipotezo t.i. neolitske demografske tranzicije (NDT) in primerjali dobljene vzorce s tistimi v sosednjih regijah. Rezultati kažejo, da so se epizode rasti poselitve zgodile v obeh regijah, kar je delno v skladu z napovedmi teorije NDT. Zaznali smo sicer rast poselitve, ki pa ji sledi nenaden padec, kar ni v skladu z napovedmi za drugo fazo NDT, ki predvideva stabilizacijo.*

**KLJUČNE BESEDE** – *zgodnji neolitik; neolitska demografska tranzicija; paleodemografija; radiokarbonsko datiranje; jugovzhodna Evropa*

## Introduction

It is commonly accepted that the Neolithic was introduced to Europe from the Near East, and new genetic and bioarchaeological evidence undoubtedly show that these processes included movements of people (Davison et al. 2007; Haak et al. 2010; Brami, Heyd 2011; Fort 2012; Pinhasi et al. 2012; Borić, Price

2013; Gurova, Bonsall 2014; Özdoğan 2014; Mathieson et al. 2015; Szécsényi-Nagy et al. 2015; Hofmanová et al. 2016). The directions and rates of spread of the Neolithic in different regions of Europe have been important issues in numerous studies, many of which offered possible models of pop-

ulation expansion. Different models have been suggested for the process, the most frequently considered being: the wave-of-advance model, leap-frog colonisation, and diffusion of cultural novelties (cultural transmission) (Ammerman, Cavalli-Sforza 1971, 1973; Tringham 2000; Whittle et al. 2002; Bar-Yosef 2004; Pinhasi et al. 2005; Davison et al. 2007; Bocquet-Appel et al. 2009; Borić, Price 2013). In recent years, the process of neolithisation has been studied as a more complex combination of demic and cultural diffusion (Wirtz, Lemmen 2003; Fort 2012; 2015).

The Neolithic way of life brought changes in subsistence and mobility patterns, and a major shift in population structure and dynamics known as the Neolithic Demographic Transition (NDT). According to Jean-Pierre Bocquet-Appel (2002; 2008; 2011a; 2011b; 2013; Bocquet-Appel, Bar-Yosef 2008a), the NDT was a two-stage process – the first stage being characterised by exponential population growth caused by increased fertility, followed by a second stage marked by increased mortality and decelerating growth. It is assumed that the increase in fertility was caused by changes in lifestyle which accompanied the Neolithic – dietary (introduction of new, more nutritious food), and changes in residential mobility (sedentary lifestyle). The increase in mortality that followed, especially among infants, was a result of numerous factors – introduction of new pathogens, lack of drinking water, contamination by feces, reduced breastfeeding and higher workload (Bocquet-Appel 2008.49; 2013.2). When the mortality rate equaled the birth rate, population growth stopped.

The pattern of Neolithic population dynamics, based on the frequency of radiocarbon dates from Western, Northern and Central Europe, consists of a population boom that occurred at the beginning of the period, followed by a population bust after a few centuries (Shennan et al. 2013; Timpson et al. 2014). This pattern is in agreement with predictions of the NDT theory regarding its first phase, when population growth should occur. A recent study has shown that a similar pattern is observed in the Early Neolithic of the Central Balkans (Porčić et al. 2016).

In this paper, we extend the paleodemographic research to the area of Eastern Balkans and the Great Hungarian Plain. The aim is to reconstruct population dynamics and to test the NDT hypothesis on two datasets from Southeast Europe, where such studies have been lacking.

Two routes of expansion of the Neolithic way of life into Europe have been proposed. The continental route led from Thessaly, where Neolithic was introduced around the middle of the 7<sup>th</sup> millennium cal BC (Perlès et al. 2013) through the Balkans, and to Central, Western and Eastern Europe (Bocquet-Appel et al. 2009; Brami, Heyd 2011; Özdoğan 2014). The maritime (Mediterranean) route led from the coast of the Ionian Sea, along the eastern and western Adriatic coast, and further to the western Mediterranean and Iberia. Recent studies (Wirtz, Lemmen 2003; Bocquet-Appel et al. 2009; Lemmen et al. 2011; Silva, Steele 2014; Weninger et al. 2014; Brami, Zanotti 2015) emphasised the complexity of these processes, and different rates and timings for different European regions. These differences depended on various factors, such as geography, climate and sociocultural trends.

The present state of research suggests that the Neolithic spread to the territory of Eastern Balkans (mostly modern-day Bulgaria), along the valleys of the Vardar, Struma and Marica rivers (Boyadzhiev 2009). After settling in Southwestern Bulgaria and Thrace, Early Neolithic populations spread further north. The Neolithisation of this territory was gradual, in a south to north direction, and absolute dates from sites such as Poljanica-Platoto and Džuljunica-Smārdeš date the beginning of these processes to around 6200/6100 cal BC (Boyadzhiev 2009.11; Krauß et al. 2014.63, Tab. 1). The Early Neolithic lasted until around 5400/5350 cal BC, with the transition to the Late Neolithic occurring between 5500/5450 and 5400/5350 cal BC, which is thought to have been a gradual and smooth process (Gatsov, Boyadzhiev 2009.26).

The Early Neolithic on the Great Hungarian Plain (modern-day Hungary) is represented by the Starčevo and Körös cultures. The settling of these early farming populations was concentrated in the valleys of several rivers: Tisza, Körös, Maros and Beretyó. The highest density of sites has been found on the southern part of the Great Hungarian Plain, which is explained as a result of its rich and diverse landscape (Paluch 2012.49). The earliest <sup>14</sup>C dates from the southernmost sites, such as Deszk-1, Pitvaros, Maroslele-Pana and Olajkút, indicate that the beginning of Körös culture can be dated to around 6000/5910 cal BC. A south-to-north expansion is also suggested, with the earliest dates for the northernmost (Upper Tisza) region covering the time span between 5630 and 5470 cal BC (Domboróczki 2010; Domboróczki, Raczkó 2010; Oross, Siklósi 2012).

## Data and method

In this study, published data from Hungary (*Anders, Siklósi 2012*) and Bulgaria (*Gatsov, Boyadzhiev 2009; Krauß et al. 2014*) were used. A total of 179 published radiocarbon dates from 16 Bulgarian sites and 117 dates from 24 sites from the territory of Hungary were analysed (Fig. 1; Appendix 1). Dates with large standard errors (170 radiocarbon years and greater) and dates that were out of the currently accepted chronological range for the Early Neolithic in Southeast Europe (~6200–5300 cal BC) were excluded from the analysis.<sup>1</sup>

The population dynamics were reconstructed by applying the summed calibrated radiocarbon probability distributions (SCPD) method. The main assumption of this method is that the quantity of material culture is directly proportional to population size in a certain time interval in a given region (*Rick 1987; Shennan et al. 2013; Williams 2012*). If the number of radiocarbon dates is large enough, then the frequency of dates from a specific time period will be directly proportional to the quantity of archaeological remains from that period, and hence to the size of the population that produced them. The method that was applied in this study was developed by Stephen Shennan *et al.* (2013) and Adrian Timpson *et al.* (2014), and it accounts for biases that can greatly affect the final result: the effects of the calibration curve, research bias and effects of taphonomy. The analysis was performed in R programming language (*R Core Team 2014*), using the *Bchron* package for calibrating dates (*Parnell 2014*), and the *INTCAL 13* calibration curve (*Reimer et al. 2013*).

The research bias is the result of different sampling strategies, depending on particular research questions. In other words, samples are usually not collected randomly, but in order to provide chronological information for specific archaeological contexts. In order to reduce the research bias, a binning procedure was performed at the beginning of the analysis. Radiocarbon dates were binned into site-phases, and sorted in decreasing order within each site-phase. Subdivision into bins within site-phases was performed if the difference between two adjacent dates was greater than 200 radiocarbon years. After the calibration, dates were summed within and between bins, and normalised to produce the final

SCPD curve. This procedure controls for research bias due to the different number of dates from different sites and site phases, but it cannot control for the bias resulting from the selection of sites and site phases themselves. The binning procedure performed on the 179 Early Neolithic dates from Bulgaria produced 22 bins, while the same procedure performed on 117 Early Neolithic dates from Hungary produced 26.

Taphonomic bias refers to the loss of archaeological material over time due to various taphonomic factors. In order to address this source of bias, the taphonomic exponential curve equation developed by Todd A. Surovell *et al.* (2009) was used as a null model. The null model assumes that the population was stationary and that, apart from the shape of the calibration curve, the taphonomy is the only factor which affects the shape of the empirical SCPD curve. According to the probabilities given by the null model, calendar dates from the specified time interval were randomly sampled, which produced a large number of simulated radiocarbon datasets. The number of dates for each simulated dataset is equal to the number of bins in the empirical data set. This procedure was repeated many times; for the Early Neolithic dates from Hungary and Bulgaria, we simulated 10 000 null model SCPDs. Sampled calendar dates were then ‘back calibrated’ and recalibrated afterwards, and summed to produce the simulated SCPD pattern. Finally, the empirical SCPD curve was compared to the 95% confidence intervals calculated from the simulated SCPD values. When the empirical SCPD is above or below the 95% confidence intervals, there is a statistically significant growth or decline of population relative to the null model. This whole procedure was undertaken in order to assess the statistical significance of the empirical SCPD pattern.

## Results

The results of the SCPD method for the territory of Bulgaria are shown in Figure 2. After ~6000 cal BC, the curve begins to increase, reaching a peak around 5700 cal BC, after which it decreases. However, none of the changes in the curve reach the threshold of statistical significance, as the curve is always within the 95% CI limits, meaning that it is consistent with the null model, which assumes uniform population (with effects of taphonomy).

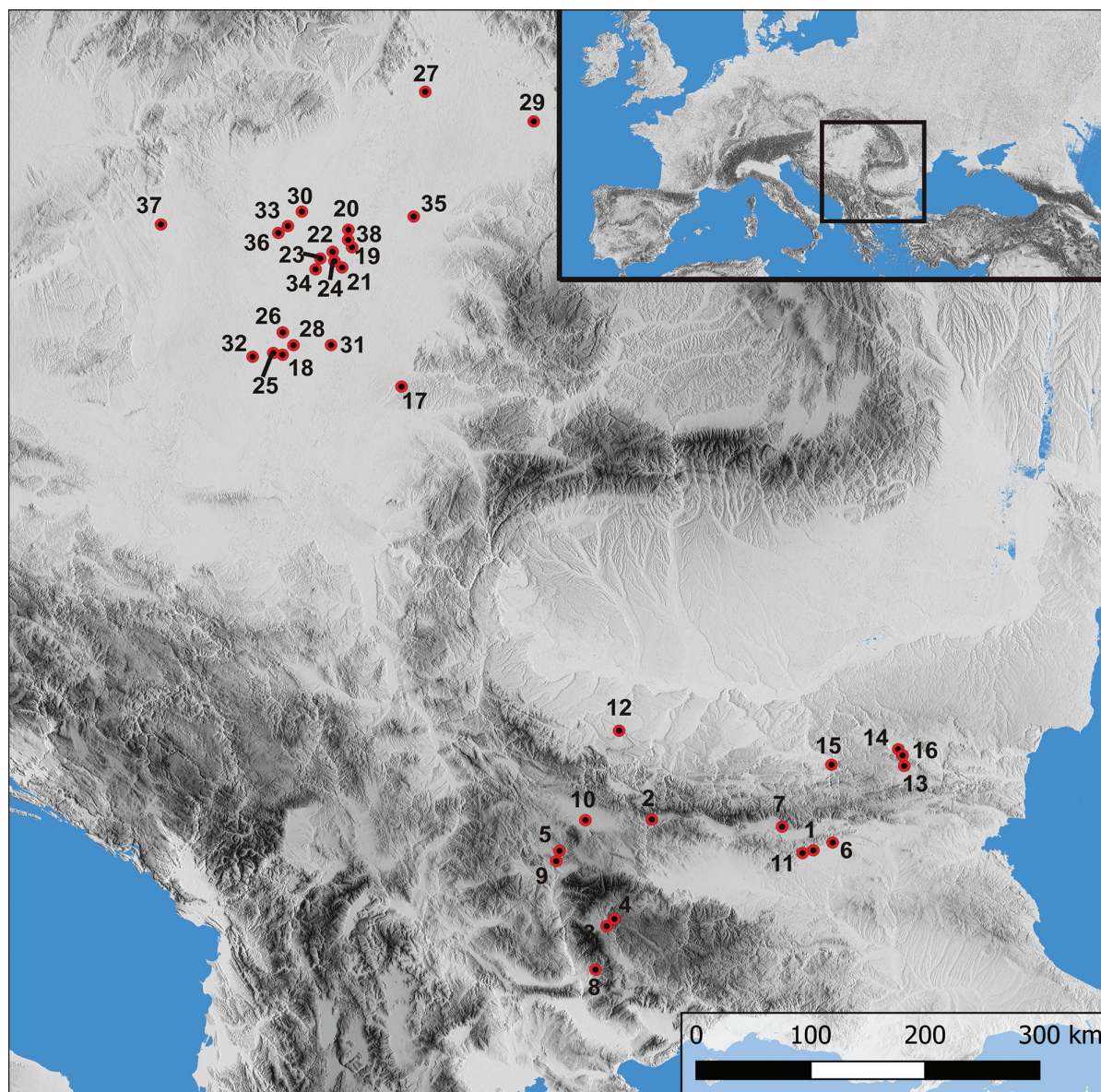
<sup>1</sup> The omitted dates are from the following Bulgarian sites: Ovčarovo-gorata (Bln-2031), Galabnik (GrN-19786), Poljanica-platoto (Bln-1571) and Džuljunica-Smārdeš (OxA-24937). From Hungarian sites, the dates that were excluded are: Eceşfalva 23 (OxA-12857), Endrőd 6 (Deb-408, Deb-450), Maroslele-Pana (OxA-9403, Deb-2733), Szajol-Felsőföld (Deb-473, Deb-474), Szakmár-Kisülés (Deb-413), Szarvas 23 (BM-1865R) and Szarvas 56 (Deb-396).

The results of the SCPD method for the territory of Hungary are shown in Figure 3. The empirical curve increases after ~6200 cal BC and goes beyond the upper 95% CI limit between ~5750 and ~5500 cal BC, meaning that in this interval, there was a significant increase relative to the null model, which assumes uniform population (with effects of taphonomy). After this interval, the curve abruptly drops, but stays within the 95% CI limits. Around 5200 cal

BC, a minor, but statistically significant drop can be observed.

## Discussion

In the Eastern Balkans, the curve started to increase with the beginning of the Neolithic. The peak around 5700 cal BC occurred afterwards, and may be considered as indicative of the NDT. The lack of statistical



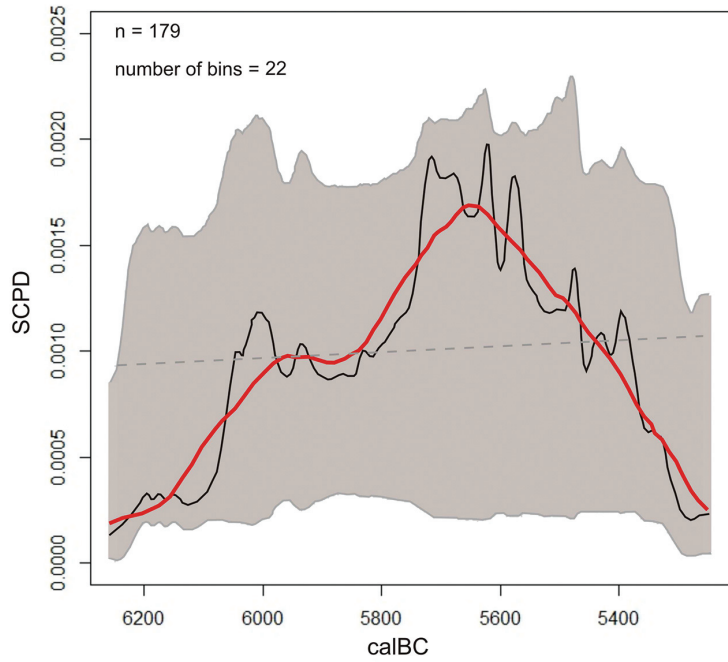
**Fig. 1.** Early Neolithic sites from Bulgaria (1–16) and Hungary (17–38) with radiocarbon dates included in this study: 1 Azmak, 2 Čavdar, 3 Dobrinište, 4 Elešnica, 5 Galabnik, 6 Karanovo, 7 Kazanlak, 8 Kováčevo, 9 Kremenik (Sapareva Banja), 10 Slatina, 11 Stara Zagora (Okražna bolnica), 12 Ohoden, 13 Ovčarovo-gorata, 14 Poljanica-platoto, 15 Džuljunica-Smārdeš; 16 Ovcharovo-platoto 2; 17 Battonya-Basarága, 18 Deszk-Olajkút, 19 Dévaványa-Katalszeg, 20 Ecségfalva 23, 21 Endrőd 35, 22 Endrőd 39, 23 Endrőd 119, 24 Endrőd-Varnyai-tanya, 25 Gyálarét-Szilágyi major, 26 Hódmezővásárhely-Kotacpart-Vata-tanya, 27 Ibrány-Nagyerdő, 28 Maroslele-Pana, 29 Méhtelek-Nádas, 30 Nagykőrű-TszGyümölcsös, 31 Pitvaros-Viztározó, 32 Rőszke-Lúdvár, 33 Szajol-Felsőföld, 34 Szarvas 23; 35 Szentpéterszeg-Körtvélyes, 36 Szolnok-Szanda, 37 Tiszaszőlős-Domaháza-pusztá; 38 Dévaványa-Réhelyi gát (map produced by Jugoslav Pendić and Kristina Penezić).

significance (at the 0.05 level) of the deviation from the null model is most probably due to the low effective sample size (the number of bins is only 22), which implies low statistical power.

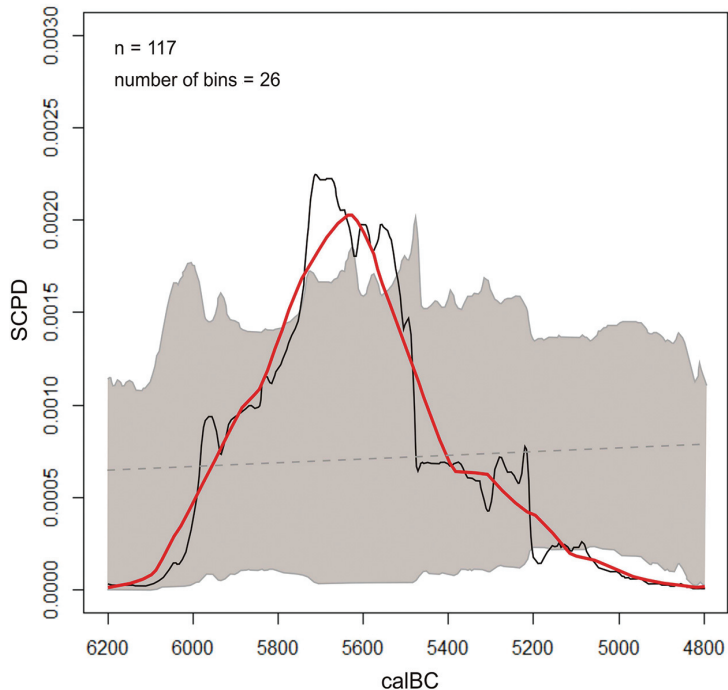
The results for the Hungarian Plain dates show a significant peak around ~5750 cal BC, which can be interpreted as population growth at the beginning of the Neolithic, and the signal of the NDT. It is followed by a sharp decrease in the curve at ~5500 cal BC, suggesting a population bust in this period.

The observed pattern – a population increase at the beginning of the Neolithic, followed by a population decrease after about 150 years for Bulgaria, and about 250 years for Hungary – correspond to the boom and bust pattern observed in other regions in Europe and the Balkans (Shennan, Edinborough 2007; Shennan et al. 2013; Timpson et al. 2014; Porčić et al. 2016; Pilaar Birch, Vander Linden 2017).

When compared to the results obtained for the territory of Serbia (Porčić et al. 2016), it can be seen that they are quite similar in general, but some regional differences should be further discussed (Fig. 4). In Porčić *et al.* (2016) it was shown that the SCPD curve for data from Serbia had two statistically significant peaks (~6000 cal BC and ~5650 cal BC) and a major drop between. Two explanations have been proposed. The first perceives these changes as real demographic patterns that reflect major population growth followed by increased mortality or migration, with a rebound occurring after 350 years. The other explanation would be that this result is a consequence of a research bias that led to oversampling the earliest Early Neolithic contexts and that the peak around ~5650 cal BC is most probably the signal of the NDT (Porčić et al. 2016.6–7). In a recent study by Suzanne Pilaar Birch and Marc Vander Linden (2017), which primarily deals with the correlation between environmental changes and population dynamics dur-



**Fig. 2. Results of the SCPD analysis based on the Early Neolithic radiocarbon dates from Bulgaria. SCPD empirical curve (black line) for Early Neolithic dates, with 95% confidence intervals (shaded) based on 10 000 simulations from the null model (grey dashed line) and 200 year rolling mean (red line); number of dates = 179; number of bins = 22; global p value = 0.5516.**



**Fig. 3. Results of the SCPD analysis based on the Early Neolithic radiocarbon dates from Hungary. SCPD empirical curve (black line) for Early Neolithic dates, with 95% confidence intervals (shaded) based on 10 000 simulations from the null model (grey dashed line) and 200 year rolling mean (red line); number of dates = 117; number of bins = 26; global p value = 0.0037.**

ing the Late Pleistocene and Early Holocene in the eastern Adriatic and western Balkans, the SCPD method was used in order to reconstruct population dynamics. The results have confirmed the boom and bust pattern in the Balkan region, and have also shown that these processes happened within the same time frame in the eastern Adriatic (*Pilaar Birch, Vander Linden 2017.Figs. 5 and 6*).

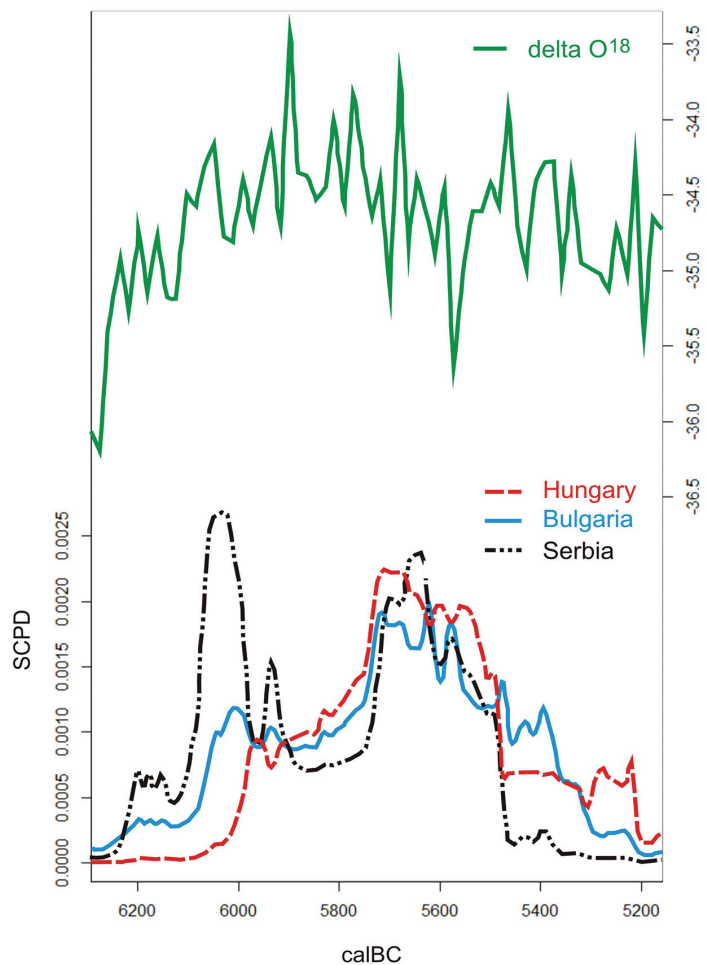
Additional data are available for the territory of Croatia. Botić presents the results of summed distributions of the Starčevo (Early Neolithic) and Sopot (Late Neolithic) dates from the territory of Croatia (*Botić 2016.17, Fig. 4*). A sign of possible population growth similar to the one observed in data from neighbouring regions is present. However, it should be noted that the number of dates from this study is very low (23 dates).

It is interesting to note that the peaks from the three curves (Bulgaria, Hungary, Serbia) coincide (Fig. 4), given the usual assumption that the Neolithic gradually spread from south to north. The earliest Neolithic in Serbia and Bulgaria is dated to ~6200 and ~6100–6050 cal BC, respectively (*Whittle et al. 2002; Krauß et al. 2014*). The earliest Körös sites in Hungary are not older than 6000 cal BC (*Anders, Siklósi 2012.153*). Therefore, it should be expected that population boom in Central and Eastern Balkans should have happened earlier than in the Great Hungarian Plain if the demographic process was the same. Given the small samples in all regions of Southeast Europe and the fact that the SCPD method is a very rough tool, these contradictions should not be given too much weight at this moment, as the precision to discriminate between the shifts of one or two centuries may be lacking in this case.

Given the increasing importance of the research focusing on the relationship between climate changes and cultural dynamics (e.g., *Wirtz, Lemmen 2003; Budja 2007; 2015; Gronenborn 2009; Weninger et al. 2009; 2014; Clare, Weninger 2010; Shennan et al. 2013; Lemmen, Wirtz 2012; Botić 2016; Pilaar Birch, Vander Linden 2017*), we compared the SCPD curves to a global climate proxy. In order to explore the relationship between climate and population dynamics in the three

regions of Southeast Europe, the SCPD curves for Serbia, Hungary and Bulgaria are plotted against the GISP2 core curve (*Groote, Stuiver 1997*) (Fig. 4). There is some indication that the troughs after ~5500 cal BC on SCPD curves based on dates from Serbia and Hungary may be related to the reduction in temperature which started somewhat earlier, but no strong sign of covariation is present. Unfortunately, at this point, no high-resolution climate proxies are available for the study region, and a more precise climate reconstruction is not possible. Relying on global proxies such as GISP cores when investigating populations dynamics in the central Balkan area can only be regarded as a general framework for further research.

In order to create a more accurate and precise reconstruction of population dynamics in Southeastern Europe, it is necessary to generate a new sample of radiocarbon dates according to a probabilistic sampling design, which would minimise the re-



**Fig. 4.** Climate proxy (raw  $\delta O^{18}$  curve data from GISP2 core – green solid line) plotted over SCPD curves for Serbia (black dash-dotted line), Bulgaria (blue solid line) and Hungary (red dashed line)

search bias and increase statistical power. For the region of Central Balkans, the collection of new radiocarbon samples is currently under way by the authors of this paper. This sample is specifically designed for the purposes of population dynamics reconstruction with the SCPD method; an effort is made to approximate a random sample. Therefore, the results presented in this paper should be considered as preliminary and will be further refined when the new data arrive.

## Conclusions

It can be concluded that in the Eastern Balkans and Great Hungarian plain, the shape of the SCPD curve is consistent with the population boom predicted by the NDT theory and empirical results from other parts of Europe and Balkans. No clear influence of

climate on population dynamics patterns during the 6<sup>th</sup> millennium cal BC was detected.

## ACKNOWLEDGEMENTS

*This research is a result of the Project “BIRTH: Births, mothers and babies: prehistoric fertility in the Balkans between 10 000–5000 BC”, funded by the European Research Council (ERC) (<https://erc.europa.eu/>) under the European Union’s Horizon 2020 research and innovation programme (Grant Agreement No. 640557; Principal Investigator: SS). We would like to thank Jugoslav Pendić for his help with Figure 1. We are also grateful to Carsten Lemmen and the anonymous reviewer for their constructive comments, suggestions and criticism. The responsibility for all remaining omissions and errors is exclusively ours.*

∴

## References

- Ammerman A., Cavalli-Sforza L. 1971. Measuring the Rate of Spread of Early Farming in Europe. *Man* 6(4): 674–688.
1973. A population model for the diffusion of early farming in Europe. In C. Renfrew (ed.), *The explanation of culture change: models in prehistory*. Duckworth. London: 343–357.
- Anders A., Siklósi Z. (eds.) 2012. *The First Neolithic Sites in Central/South-East European Transect, Volume III. The Körös Culture in Eastern Hungary*. British Archaeological Reports IS 2334. Archaeopress. Oxford.
- Bar-Yosef O. 2004. Guest Editorial: East to West – Agricultural Origins and Dispersal into Europe. *Current Anthropology* 45: S1–S3.
- Bocquet-Appel J-P. 2002. Paleoanthropological Traces of a Neolithic Demographic Transition. *Current Anthropology* 43(4): 637–650.
2008. Explaining the Neolithic Demographic Transition. In J-P. Bocquet-Appel, O. Bar-Yosef (eds.), *The Neolithic Demographic Transition and its Consequences*. Springer. Berlin: 35–55.
- 2011a. When the World’s Population Took Off: The Springboard of the Neolithic Demographic Transition. *Science* 333(6042): 560–561. <http://science.sciencemag.org/content/333/6042/560>
- 2011b. The Agricultural Demographic Transition During and After the Agriculture Inventions. *Current Anthropology* 52(S4): S497–S510.
2013. Demographic Transitions. In C. Smith (ed.), *Encyclopedia of Global Archaeology*. Springer Science+ Business Media. New York: 1–8.
- Bocquet-Appel J-P., Bar-Yosef O. (eds.) 2008. *The Neolithic Demographic Transition and its Consequences*. Springer. Berlin.
- Bocquet-Appel J-P., Naji S., Vander Linden M. and Kozłowski J. K. 2009. Detection of diffusion and contact zones of early farming in Europe from the space-time distribution of <sup>14</sup>C dates. *Journal of Archaeological Science* 36(3): 1–14.
- Borić D., Price T. D. 2013. Strontium isotopes document greater human mobility at the start of the Balkan Neolithic. *Proceedings of the National Academy of Sciences of the USA* 110(9): 3298–3303. <http://www.pnas.org/content/110/9/3298.full>
- Botić K. 2016. Climatic influences on appearance and development of Neolithic cultures in southern outskirts of Carpathian basin. *Studia Quaternaria* 33(1): 11–26. [https://bib.irb.hr/datoteka/811183.s\\_011\\_026\\_opt-2.pdf](https://bib.irb.hr/datoteka/811183.s_011_026_opt-2.pdf)
- Boyadzhiev Y. D. 2009. Early neolithic cultures on the territory of Bulgaria. In I. Gatsov, Y. Boyadzhiev (eds.), *The*

- First Neolithic Sites in Central/South-East European Transect, Volume I. Early Neolithic Sites on the Territory of Bulgaria. British Archaeological Reports IS 2048. Archaeopress. Oxford: 7–43.
- Brami M., Heyd V. 2011. The origins of Europe's first farmers: The role of Hacilar and western Anatolia, fifty years on. *Prähistorische Zeitschrift* 86(2): 165–206.
- Brami M., Zanotti A. 2015. Modelling the initial expansion of the Neolithic out of Anatolia. *Documenta Praehistorica* 42: 103–116. <http://revije.ff.uni-lj.si/DocumentaPraehistorica/article/view/42.6>
- Budja M. 2007. The 8200 calBP 'climate event' and the process of neolithisation in south-eastern Europe. *Documenta Praehistorica* 34: 191–201. <http://revije.ff.uni-lj.si/DocumentaPraehistorica/article/view/34.14>
2015. Archaeology and rapid climate changes from the collapse concept to a panarchy interpretative model. *Documenta Praehistorica* 42: 171–184. <http://revije.ff.uni-lj.si/DocumentaPraehistorica/article/view/42.11>
- Clare L., Weninger B. 2010. Social and biophysical vulnerability of prehistoric societies to Rapid Climate Change. *Documenta Praehistorica* 37: 283–292. <http://revije.ff.uni-lj.si/DocumentaPraehistorica/article/view/37.24>
- Davison K., Dolukhanov P. M., Sarson G. R., Shukurov A. and Zaitseva G. I. 2007. A Pan-European model of the Neolithic. *Documenta Praehistorica* 34: 139–154. <http://revije.ff.uni-lj.si/DocumentaPraehistorica/article/view/34.11>
- Domboróczki L. 2010. Report on the excavation at Tiszaszőlös-Domaháza-pusztá and a new model for the spread of the Körös culture. In J. K. Kozłowski, P. Raczky (eds.), *Neolithization of the Carpathian Basin: Northernmost distribution of the Starčevo/Körös culture*. Kraków-Budapest: 137–176.
- Domboróczki L., Raczky P. 2010. Excavations at Ibrány-Nagyerdő and the northernmost distribution of the Körös culture in Hungary. In J. K. Kozłowski, P. Raczky (eds.), *Neolithization of the Carpathian Basin: Northernmost distribution of the Starčevo/Körös culture*. Kraków-Budapest: 191–218.
- Fort J. 2012. Synthesis between demic and cultural diffusion in the Neolithic transition in Europe. *Proceedings of the National Academy of Sciences of the USA* 109(46): 18669–18673. <http://www.pnas.org/content/109/46/18669.full>
- Fort J., Crema E. R. and Madella M. 2015. Modelling Demic and Cultural Diffusion: An Introduction. *Human Biology* 87(3): 141–149.
- Gatsov I., Boyadzhiev Y. (eds.) 2009. *The First Neolithic Sites in Central/South-East European Transect, Volume I. Early Neolithic Sites on the Territory of Bulgaria*. British Archaeological Reports IS 2048. Archaeopress. Oxford.
- Gronenborn D. 2009. Climate fluctuations and trajectories to complexity in the Neolithic: towards a theory. *Documenta Praehistorica* 36: 97–110. <http://revije.ff.uni-lj.si/DocumentaPraehistorica/article/view/36.5>
- Grootes P., Stuiver M. 1997. Oxygen 18/16 variability in Greenland snow and ice with 10<sup>-3</sup> to 10<sup>-5</sup> year time resolution. *Journal of Geophysical Research: Oceans* (1978–2012), 102(C12): 26455–26470.
- Gurova M., Bonsall K. 2014. 'Pre-Neolithic' in Southeast Europe: a Bulgarian perspective. *Documenta Praehistorica* 41: 95–109. <http://revije.ff.uni-lj.si/DocumentaPraehistorica/article/view/41.5/2568>
- Haak W. and 18 co-authors. 2010. Ancient DNA from European Early Neolithic farmers reveals their Near Eastern affinities. *PLOS Biology* 8(11): e1000536. doi: 10.1371/journal.pbio.1000536 PMID: 21085689 <http://journals.plos.org/plosbiology/article?id=10.1371/journal.pbio.1000536#s2>
- Hofmanová Z. and 38 co-authors. 2016. Early farmers from across Europe directly descended from Neolithic Aegeans. *Proceedings of the National Academy of Sciences of the USA* 113(25): 6886–6891. <http://www.pnas.org/content/113/25/6886.full>
- Krauß R., Elenski N., Weninger B., Clare L., Çakırlar C. and Zidarov P. 2014. Beginnings of the Neolithic in Southeast Europe: the Early Neolithic sequence and absolute dates from Džuljunica-Smārdeš (Bulgaria). *Documenta Praehistorica* 41: 51–77. <http://revije.ff.uni-lj.si/DocumentaPraehistorica/article/view/41.3>
- Lemmen C., Wirtz K. W. 2014. On the sensitivity of the simulated European Neolithic transition to climate extremes. *Journal of Archaeological Science* 51: 65–72.
- Lemmen C., Gronenborn D. and Wirtz K. W. 2011. A simulation of the Neolithic transition in Western Eurasia. *Journal of Archaeological Science* 38: 3459–3470.
- Mathieson I. and 37 co-authors. 2015. Genome-wide patterns of selection in 230 ancient Eurasians. *Nature; advance online publication*. doi: 10.1038/nature16152
- Oross K., Siklósi Z. 2012. Relative and absolute chronology of the Early Neolithic of the Great Hungarian Plain. In A. Anders, Z. Siklósi (eds.), *The First Neolithic Sites in Central/South-East European Transect, Volume III. The Körös Culture in Eastern Hungary*. British Archaeological Reports IS 2334. Archaeopress. Oxford: 129–159.



- Özdoğan M. 2014. A new look at the introduction of the Neolithic way of life in Southeastern Europe. Changing paradigms of the expansion of the Neolithic way of life. *Documenta Praehistorica* 41: 33–49. <http://revije.ff.uni-lj.si/DocumentaPraehistorica/article/view/41.2>
- Paluch T. 2012. Characteristics of the Körös culture in the southern section of the Great Hungarian Plain. In A. Andersand, Z. Siklósi (eds.), *The First Neolithic Sites in Central/South-East European Transect, Volume III. The Körös Culture in Eastern Hungary*. British Archaeological Reports IS 2334. Archaeopress. Oxford: 49–52.
- Parnell A. 2014. *Bchron: Radiocarbon dating, age-depth modelling, relative sea level rate estimation, and non-parametric phase modelling*. R package version 4.0. 2014
- Pirlès C., Quiles A. and Valladas H. 2013. Early seventh-millennium AMS dates from domestic seeds in the Initial Neolithic at Franchthi Cave (Argolid, Greece). *Antiquity* 87(338): 1001–1015.
- Pilaar Birch S. E., Vander Linden M. 2017. A long hard road... Reviewing the evidence for environmental change and population history in the eastern Adriatic and western Balkans during the Late Pleistocene and Early Holocene. *Quaternary International*. <http://dx.doi.org/10.1016/j.quaint.2016.12.035>
- Pinhasi R., Fort J. and Ammerman A. J. 2005. Tracing the origin and spread of agriculture in Europe. *PLOS Biology* 3(12): e2220–e2228. <http://journals.plos.org/plosbiology/article?id=10.1371/journal.pbio.0030410>
- Pinhasi R., Thomas M. G., Hofreiter M., Currat M. and Burger J. 2012. The genetic history of Europeans. *Trends in Genetics* 28(10): 496–505. doi: 10.1016/j.tig.2012.06.006 PMID: 22889475
- Porčić M., Blagojević T. and Stefanović S. 2016. Demography of the Early Neolithic Population in Central Balkans: Population Dynamics Reconstruction Using Summed Radiocarbon Probability Distributions. *PLOS ONE* 11(8): e0160832. <http://journals.plos.org/plosone/article?id=10.1371/journal.pone.0160832>
- R Core Team 2014. *R: A language and environment for statistical computing*. R Foundation for Statistical Computing, Viena, Austria. URL <http://R-project.org/>
- Reimer P. J. and 29 co-authors. 2013. IntCal13 and Marine13 Radiocarbon Age Calibration Curves 0–50,000 Years cal BP. *Radiocarbon* 55(4): 1869–1887.
- Rick J. W. 1987. Dates as Data: An Examination of the Peruvian Pre-ceramic Radiocarbon Record. *American Antiquity* 52(1): 55–73.
- Shennan S., Edinborough K. 2007. Prehistoric population history: from the Late Glacial to the Late Neolithic in Central and Northern Europe. *Journal of Archaeological Science* 34: 1339–1345.
- Shennan S., Downey S. S., Timpson A., Edinborough K., Colledge S., Kerig T., Manning K. and Thomas M. G. 2013. Regional population collapse followed initial agriculture booms in mid-Holocene Europe. *Nature Communications* 4: 2486. <http://www.nature.com/articles/ncomms3486>
- Silva F., Steele J. 2014. New methods for reconstructing geographical effects on dispersal rates and routes from large-scale radiocarbon databases. *Journal of Archaeological Science* 52: 609–620.
- Szécényi-Nagy A. and 27 co-authors. 2015. Tracing the genetic origin of Europe's first farmers reveals insights into their social organization. *Proceedings of the Royal Society of London B: Biological Sciences* 282(1805): 20150339. <http://rspb.royalsocietypublishing.org/content/282/1805/20150339>
- Timpson A., Colledge S., Crema E., Edinborough K., Kerig T., Manning K., Thomas, M. G. and Shennan S. 2014. Reconstructing regional population fluctuations in the European Neolithic using radiocarbon dates: a new case-study using an improved method. *Journal of Archaeological Science* 52: 549–557. <http://www.sciencedirect.com/science/article/pii/S0305440314002982>
- Timpson A., Manning K. and Shennan S. 2015. Inferential mistakes in population proxies: A response to Torfing's "Neolithic population and summed probability distribution of <sup>14</sup>C-dates". *Journal of Archaeological Science* 63: 199–202. doi:<http://dx.doi.org/10.1016/j.jas.2015.08.018>
- Tringham R. 2000. Southeastern Europe in the transition to agriculture in Europe: bridge, buffer or mosaic. In T. D. Price (ed.), *Europe's First Farmers*. Cambridge University Press. Cambridge: 19–56.
- Weninger B. and 18 co-authors. 2009. The Impact of Rapid Climate Change on Prehistoric Societies during the Holocene in the Eastern Mediterranean. *Documenta Praehistorica* 36: 7–59. <http://revije.ff.uni-lj.si/DocumentaPraehistorica/article/view/36.2>
- Weninger B., Clare L., Gerritsen F., Horejs B., Krauß R., Linstädter J., Özbal R. and Rohlling E. J. 2014. Neolithisation of the Aegean and Southeast Europe during the 6600–6000 cal BC period of Rapid Climate Change. *Documenta Praehistorica* 41: 1–31. <http://revije.ff.uni-lj.si/DocumentaPraehistorica/article/view/41.1>

Wirtz K. W., Lemmen C. 2003. A global dynamic model for the Neolithic transition. *Climatic change* 59: 333–367.

Early Neolithic in northern Serbia and south-east Hungary. *Antaeus* (25): 63–117.

Whittle A., Bartosiewicz L., Boric D., Pettitt P. and Richards M. 2002. In the beginning: new radiocarbon dates for the

Williams A. N. 2012. The use of summed radiocarbon probability distributions in archaeology: a review of methods. *Journal of Archaeological Science* 39: 578–589.

∴

## Appendix 1

### List of sites from the territory of Hungary and Bulgaria, with radiocarbon dates used in this study

HUNGARY						
Site (No. on the Fig. 1)	Coordinates	Lab. No	Uncal. BP	St. error	Cal BC	Reference
Battonya-Basarága (17)	45°59'37.84"N 21°28'10.12"E	BM-1862R	6710	110	5840 (95.4%) 5473	Bowman et al. 1990.73; Horváth, Hertelendi 1994.123
Deszk-Olajkút (18)	46°13'43.75"N 20°14'34.04"E	OxA-9396	7030	50	6010 (95.4%) 5796	Whittle et al. 2002.111, 115
Deszk-Olajkút		Bln-581	6605	100	5709 (95.4%) 5374	Quitta, Kohl 1969.240
Deszk-Olajkút		Bln-584	6540	100	5643 (95.4%) 5317	Quitta, Kohl 1969.240
Deszk-Olajkút		Bln-583	6410	100	5613 (95.4%) 5083	Quitta, Kohl 1969.240
Deszk-Olajkút		Bln-582a	6390	100	5551 (95.5%) 5078	Quitta, Kohl 1969.240
Deszk-Olajkút		Bln-582	6260	100	5469 (95.4%) 4994	Quitta, Kohl 1969.240
Deszk-Olajkút		OxA-9376	6225	55	5315 (95.4%) 5040	Whittle et al. 2002.111, 115
Déványa-Katalszeg (19)	47° 0'56.39"N 20°57'35.72"E	Bln-86	6370	100	5524 (95.4%) 5070	Kohl, Quitta 1963.300
Déványa-Réhelyi gát (38)	47° 4'9.37"N 20°55'8.78"E	Bln-1379	6640	60	5657 (95.4%) 5482	Oross, Siklosi 2012.Tab. 1
Ecsefalva 23 (20)	47° 8'34.42"N 20°55'17.19"E	OxA-9329	6950	45	5974 (95.4%) 5733	Whittle et al. 2002.110, 115
Ecsefalva 23		OxA-11871	6930	40	5899 (95.4%) 5726	Bronk Ramsey et al. 2007.175
Ecsefalva 23		OxA-9335	6920	50	5969 (95.4%) 5716	Whittle et al. 2002.110, 115
Ecsefalva 23		OxA-9526	6915	50	5970 (95.4%) 5712	Whittle et al. 2002.110, 115
Ecsefalva 23		OxA-11983	6915	36	5881 (95.4%) 5726	Bronk Ramsey et al. 2007.175
Ecsefalva 23		OxA-10500	6900	60	5968 (95.4%) 5667 5876 (95.4%) 5713	Bronk Ramsey et al. 2007.175
Ecsefalva 23		OxA-11984	6893	36	5876 (95.4%) 5713	Bronk Ramsey et al. 2007.175
Ecsefalva 23		OxA-12654	6889	36	5874 (95.4%) 5710	Bronk Ramsey et al. 2007.176
Ecsefalva 23		OxA-10501	6885	50	5881 (95.4%) 5671	Bronk Ramsey et al. 2007.176
Ecsefalva 23		OxA-9327	6870	50	5877 (95.4%) 5661	Whittle et al. 2002.110, 115
Ecsefalva 23		OxA-11845	6865	40	5840 (95.4%) 5667	Bronk Ramsey et al. 2007.175
Ecsefalva 23		OxA-9333	6860	45	5844 (95.4%) 5658	Whittle et al. 2002.110, 115; Bronk Ramsey et al. 2007.175
Ecsefalva 23		OxA-9334	6855	50	5844 (95.4%) 5644	<i>ibid.</i>
Ecsefalva 23		OxA-10505	6845	50	5838 (95.4%) 5643	Bronk Ramsey et al. 2007.176
Ecsefalva 23		OxA-12655	6830	35	5777 (95.4%) 5642	Bronk Ramsey et al. 2007.176
Ecsefalva 23		OxA-12860	6826	41	5787 (95.4%) 5637	Bronk Ramsey et al. 2007.176
Ecsefalva 23		OxA-11863	6825	45	5796 (95.4%) 5633	Bronk Ramsey et al. 2007.175
Ecsefalva 23		OxA-12859	6818	44	5783 (95.4%) 5632	Bronk Ramsey et al. 2007.175
Ecsefalva 23		OxA-9328	6815	50	5797 (95.4%) 5627	Whittle et al. 2002.110, 115; Bronk Ramsey et al. 2007.175
Ecsefalva 23		OxA-9331	6815	45	5778 (95.4%) 5631	<i>ibid.</i>

Site (No. on the Fig. 1)	Coordinates	Lab. No	Uncal. BP	St. error	Cal BC	Reference
Ecsegsfalva 23		OxA-9332	6810	45	5771 (95.4%) 5629	Whittle et al. 2002.110, 115; Bronk Ramsey et al. 2007.175
Ecsegsfalva 23		OxA-11982	6806	39	5746 (95.4%) 5632	Bronk Ramsey et al. 2007.175
Ecsegsfalva 23		OxA-9330	6795	50	5771 (95.4%) 5621	Whittle et al. 2002.110, 115; Bronk Ramsey et al. 2007.176
Ecsegsfalva 23		OxA-X- 2040-07	6787	37	5731 (95.4%) 5631	Bronk Ramsey et al. 2007.176
Ecsegsfalva 23		OxA-13511	6785	45	5739 (95.4%) 5624	Bronk Ramsey et al. 2007.175
Ecsegsfalva 23		OxA-12858	6782	42	5733 (95.4%) 5627	Bronk Ramsey et al. 2007.175
Ecsegsfalva 23		OxA-11850	6780	50	5752 (95.4%) 5617	Bronk Ramsey et al. 2007.175
Ecsegsfalva 23		OxA-X- 2040-09	6780	39	5728 (95.4%) 5630	Bronk Ramsey et al. 2007.175
Ecsegsfalva 23		OxA-X- 2040-08	6775	37	5726 (95.4%) 5629	Bronk Ramsey et al. 2007.175
Ecsegsfalva 23		OxA-12854	6774	45	5736 (95.4%) 5621	Bronk Ramsey et al. 2007.175
Ecsegsfalva 23		OxA-11868	6750	45	5728 (95.4%) 5571	Bronk Ramsey et al. 2007.176
Ecsegsfalva 23		OxA-13510	6731	43	5720 (95.4%) 5563	Bronk Ramsey et al. 2007.176
Ecsegsfalva 23		OxA-12140	6729	32	5711 (95.4%) 5571	Bronk Ramsey et al. 2007.176
Ecsegsfalva 23		OxA-9325	6690	50	5707 (95.4%) 5526	Whittle et al. 2002.110, 115; Bronk Ramsey et al. 2007.176
Ecsegsfalva 23		OxA-10148	6665	50	5664 (95.4%) 5491	<i>ibid.</i>
Ecsegsfalva 23		OxA-11849	6660	40	5646 (95.4%) 5512	Bronk Ramsey et al. 2007.176
Ecsegsfalva 23		OxA-12855	6596	42	5617 (95.4%) 5483	Bronk Ramsey et al. 2007.175
Endrőd 35 (21)	46°52'8.86"N 20°51'23.05"E	Bln-1940	6615	60	5635 (95.4%) 5478	Oross, Siklosi 2012.Tab. 1
Endrőd 35		Bln-1960	6415	60	5488 (95.4%) 5235	Oross, Siklosi 2012.Tab. 1
Endrőd 35		BM-1864R	6180	110	5369 (95.4%) 4840	Bowman et al. 1990.73
Endrőd 39 (22)	46°58'59.01"N 20°45'33.37"E	BM-1868R	6970	110	6047 (95.4%) 5662	Bowman et al. 1990.73; Horváth, Hertelendi 1994.122 (with Lab no. BM-1668R)
Endrőd 39		BM-1863R	6950	140	6083 (95.4%) 5571	Bowman et al. 1990.73; Horváth, Hertelendi 1994.122
Endrőd 39		BM-1870R	6950	120	6034 (95.4%) 5635	Bowman et al. 1990.73; Horváth, Hertelendi 1994.122 (with Lab no. BM-1971R)
Endrőd 39		BM-1871R	6830	120	5982 (95.4%) 5540	Bowman et al. 1990.73; Horváth, Hertelendi 1994.122
Endrőd 39		Bln-1941	6785	55	5777 (95.4%) 5573	Oross, Siklosi 2012.Tab. 1
Endrőd 119 (23)	46°56'2.43"N 20°37'53.42"E	OxA-9587	6915	45	5899 (95.4%) 5716	Whittle et al. 2002.110, 115
Endrőd 119		OxA-9583	6895	45	5890 (95.4%) 5676	Whittle et al. 2002.110, 115
Endrőd 119		OxA-9588	6855	45	5842 (95.4%) 5657	Whittle et al. 2002.110, 115
Endrőd 119		OxA-9586	6850	45	5839 (95.4%) 5650	Whittle et al. 2002.110, 115
Endrőd 119		OxA-9582	6825	45	5796 (95.4%) 5633	Whittle et al. 2002.110, 115
Endrőd 119		OxA-9584	6825	45	5796 (95.4%) 5633	Whittle et al. 2002.110, 115
Endrőd 119		OxA-9590	6815	50	5797 (95.4%) 5627	Whittle et al. 2002.110, 115
Endrőd 119		OxA-9585	6795	50	5771 (95.4%) 5621	Whittle et al. 2002.110, 115
Endrőd 119		OxA-9589	6720	45	5717 (95.4%) 5559	Whittle et al. 2002.110, 115
Endrőd-Varnyai-tanya (24)	46°54'54.34"N 20°46'37.73"E	OxA-9395	6595	50	5619 (95.4%) 5481	Whittle et al. 2002.111, 116
Gyálarét-Szilágyi major (25)	46°14'32.24"N 20°8'50.49"E	Bln-75	7090	100	6206 (95.4%) 5746	Kohl, Quitta 1963.299-300; 1964.315; Horváth, Hertelendi 1994.122
Hódmezővásárhely-Kotacpart-Vata-tanya (26)	46°23'37.19"N 20°14'41.87"E	Bln-115	6450	100	5613 (95.4%) 5224	Kohl, Quitta 1963.299-300; 1964.315-316

Site (No. on the Fig. 1)	Coordinates	Lab. No	Uncal. BP	St. error	Cal BC	Reference
Ibrány-Nagyerdő (27)	48° 8'3.32"N 21°42'51.46"E	Poz-28216	6630	40	5626 (95.4%) 5491	<i>Domboróczki, Raczky 2010.214</i>
Ibrány-Nagyerdő		Poz-28214	6570	40	5615 (95.4%) 5475	<i>Domboróczki, Raczky 2010.214</i>
Maroslele-Pana (28)	46°17'58.53"N 20°21'17.99"E	OxA-9399	6965	50	5981 (95.4%) 5736	<i>Whittle et al. 2002.111, 115</i>
Maroslele-Pana		OxA-10149	6845	50	5838 (95.4%) 5643	<i>Whittle et al. 2002.111, 115</i>
Maroslele-Pana		OxA-9401	6780	50	5752 (95.4%) 5617	<i>Whittle et al. 2002.111, 115</i>
Maroslele-Pana		OxA-9400	6740	50	5730 (95.4%) 5561	<i>Whittle et al. 2002.111, 115</i>
Méhtelek-Nádas (29)	47°55'22.39"N 22°49'57.54"E	Bln-1331	6835	60	5843 (95.4%) 5629	<i>Kalicz, Makkay 1977.23; Horváth, Hertelendi 1994.122; Raczky et al. 2010.164</i>
Méhtelek-Nádas		Bln-1332	6655	60	5665 (95.4%) 5484	<i>ibid.</i>
Méhtelek-Nádas		GrN-6897	6625	50	5628 (95.4%) 5486	<i>ibid.</i>
Nagykörű-Tsz Gyümölcsös (30)	47°16'28.34"N 20°26'30.85"E	VERA-3476	7065	35	6016 (95.4%) 5883	<i>Raczky et al. 2010.164</i>
-/-		Poz-23460	7040	40	6006 (95.4%) 5842	<i>Gulyás et al. 2010.1462</i>
-/-		Poz-26328	6970	40	5978 (95.4%) 5747	<i>Raczky et al. 2010.164</i>
-/-		Poz-26327	6940	40	5966 (95.4%) 5730	<i>Raczky et al. 2010.164</i>
-/-		Poz-23317	6890	40	5882 (95.4%) 5707	<i>Gulyás et al. 2010.1462</i>
-/-		VERA-3474	6890	35	5873 (95.4%) 5712	<i>Raczky et al. 2010.164</i>
-/-		Poz-26325	6860	40	5838 (95.4%) 5666	<i>Raczky et al. 2010.164</i>
-/-		VERA-3540	6850	35	5833 (95.4%) 5661	<i>Raczky et al. 2010.164</i>
-/-		VERA-3052	6755	40	5726 (95.4%) 5618	<i>Raczky et al. 2010.164</i>
Pitvaros-Viztározó (31)	46°18'1.09"N 20°44'32.98"E	OxA-9336	7060	45	6018 (95.4%) 5845	<i>Whittle et al. 2002.110, 115</i>
Pitvaros-Viztározó		OxA-9393	6940	50	5974 (95.4%) 5726	<i>Whittle et al. 2002.110, 115</i>
Pitvaros-Viztározó		OxA-9392	6885	50	5881 (95.4%) 5671	<i>Whittle et al. 2002.110, 115</i>
Röszke-Lúdvár (32)	46°12'52.36"N 19°56'1.82"E	Deb-2730	6972	59	5983 (95.4%) 5738	<i>Horváth, Hertelendi 1994.122</i>
Szajol-Felsőföld (33)	47°10'12.34"N 20°17'51.28"E	VERA-3531	6805	35	5738 (95.4%) 5638	<i>Raczky 2006.383</i>
Szajol-Felsőföld		VERA-3051	6725	35	5713 (95.4%) 5566	<i>Raczky 2006.383</i>
Szajol-Felsőföld		VERA-3534	6620	35	5621 (95.4%) 5491	<i>Raczky 2006.383</i>
Szarvas 23 (34)	46°51'19.61"N 20°35'1.11"E	OxA-9375	6855	55	5871 (95.4%) 5639	<i>Whittle et al. 2002.111–115</i>
Szarvas 23		BM-1866R	6780	110	5894 (95.4%) 5491	<i>Bowman et al. 1990.73</i>
Szentpéterszeg- Körtvélyes (35)	47°14'20.46"N 21°35'42.10"E	Bln-2578	6800	60	5835 (95.4%) 5617	<i>Oross, Siklosi 2012.Tab. 1</i>
Szolnok-Szanda (36)	47° 7'12.70"N 20°11'57.79"E	Bln-1938	7005	80	6018 (95.4%) 5732	<i>Oross, Siklosi 2012.Tab. 1</i>
Szolnok-Szanda		Bln-1946	7005	80	6018 (95.4%) 5732	<i>Oross, Siklosi 2012.Tab. 1</i>
Szolnok-Szanda		Bln-2576	6940	60	5981 (95.4%) 5718	<i>Oross, Siklosi 2012.Tab. 1</i>
Szolnok-Szanda		Poz-37861	6910	40	5886 (95.4%) 5721	<i>Oross, Siklosi 2012.Tab. 1</i>
Szolnok-Szanda		OxA-23754	6859	34	5836 (95.4%) 5667	<i>Oross, Siklosi 2012.Tab. 1</i>
Szolnok-Szanda		Bln-2577	6790	70	5837 (95.4%) 5564	<i>Oross, Siklosi 2012.Tab. 1</i>
Szolnok-Szanda		Poz-37860	6770	40	5726 (95.4%) 5626	<i>Oross, Siklosi 2012.Tab. 1</i>
Szolnok-Szanda		OxA-23756	6713	33	5707 (95.4%) 5562	<i>Oross, Siklosi 2012.Tab. 1</i>
Szolnok-Szanda		OxA-23755	6713	32	5707 (95.4%) 5562	<i>Oross, Siklosi 2012.Tab. 1</i>
Szolnok-Szanda		OxA-23753	6688	35	5665 (95.4%) 5541	<i>Oross, Siklosi 2012.Tab. 1</i>
Szolnok-Szanda		OxA-23752	6554	32	5606 (95.4%) 5474	<i>Oross, Siklosi 2012.Tab. 1</i>
Tiszaszőlős-Doma- háza-pusztá (37)	47°10'53.07"N 18°59'18.34"E	Deb-11890	6920	50	5969 (95.4%) 5716	<i>Domboróczki, Raczky 2010b.152, Tab. 1</i>
-/-		OxA-20238	6789	37	5731 (95.4%) 5632	<i>ibid.</i>
-/-		Deb-11902	6780	65	5807 (95.4%) 5561	<i>ibid.</i>
-/-		OxA-20237	6776	34	5724 (95.4%) 5631	<i>ibid.</i>

Site (No. on the Fig. 1)	Coordinates	Lab. No	Uncal. BP	St. error	Cal BC	Reference
Tiszaszőlős-Domaháza-puszta		OxA-20239	6775	40	5729 (95.4%) 5627	<i>Domboróczki, Raczkó 2010b. 152, Tab. 1</i>
-//-		Deb-11804	6740	60	5736 (95.4%) 5547	<i>ibid.</i>
-//-		OxA-20236	6673	35	5657 (95.4%) 5531	<i>ibid.</i>
-//-		Deb-12962	6657	65	5701 (95.4%) 5481	<i>ibid.</i>
-//-		Deb-11898	6550	95	5639 (95.4%) 5326	<i>ibid.</i>
-//-		Deb-13045	6462	48	5492 (95.4%) 5324	<i>László Domboróczki 2012.108</i>
-//-		VERA-4243	6245	30	5309 (95.4%) 5076	<i>ibid.</i>
			<b>BULGARIA</b>			
Azmač (1)	42°27'6.06"N 25°43'0.61"E	Bln-293	7303	150	6452 (95.4%) 5901	<i>Görsdorf, Bojadžiev 1996. 133–136</i>
Azmač		Bln-291	7158	150	6361 (95.4%) 5739	<i>ibid.</i>
Azmač		Bln-292	6878	100	5982 (95.4%) 5625	<i>ibid.</i>
Azmač		Bln-294	6768	100	5877 (95.4%) 5494	<i>ibid.</i>
Azmač		Bln-296	6779	100	5886 (95.4%) 5516	<i>ibid.</i>
Azmač		Bln-295	6720	100	5808 (95.4%) 5479	<i>ibid.</i>
Azmač		Bln-203	6870	100	5983 (95.4%) 5621	<i>ibid.</i>
Azmač		Bln-299	6812	100	5968 (95.4%) 5542	<i>ibid.</i>
Azmač		Bln-267	6758	100	5846 (95.4%) 5487	<i>ibid.</i>
Azmač		Bln-224	6650	150	5872 (95.4%) 5317	<i>ibid.</i>
Azmač		Bln-297	6675	100	5776 (95.4%) 5390	<i>ibid.</i>
Azmač		Bln-298	6540	100	5643 (95.4%) 5317	<i>ibid.</i>
Azmač		Bln-300	6426	150	5641 (95.4%) 5043	<i>ibid.</i>
Azmač		Bln-301	6483	100 (1,3)	5625 (95.4%) 5231	<i>ibid.</i>
Azmač		Bln-430	6279	120	5479 (95.4%) 4953	<i>ibid.</i>
Azmač		Bln-140A	6476	100	5622 (95.4%) 5230	<i>ibid.</i>
Čavdar (Čavdar) (2)	42°41'38.57"N 24°3'1.33"E	Bln-1583	6994	55	5988 (95.4%) 5753	<i>Görsdorf, Bojadžiev 1996. 124–126</i>
Čavdar (Čavdar)		Bln-1580	7003	45	5990 (95.4%) 5775	<i>ibid.</i>
Čavdar (Čavdar)		Bln-2108	7195	65	6221 (95.4%) 5929	<i>ibid.</i>
Čavdar (Čavdar)		Bln-1663	7070	50	6034 (95.4%) 5843	<i>ibid.</i>
Čavdar (Čavdar)		Bln-1582	7020	45	6001 (95.4%) 5796	<i>ibid.</i>
Čavdar (Čavdar)		Bln-1581	7000	60	5995 (95.4%) 5749	<i>ibid.</i>
Čavdar (Čavdar)		Bln-1578	6994	55	5988 (95.4%) 5753	<i>ibid.</i>
Čavdar (Čavdar)		Bln-2662	6400	100	5606 (95.4%) 5080	<i>ibid.</i>
Čavdar (Čavdar)		Bln-2107	6550	50	5619 (95.4%) 5385	<i>ibid.</i>
Čavdar (Čavdar)		Bln-4261	7120	80	6211 (95.4%) 5837	<i>ibid.</i>
Čavdar (Čavdar)		Bln-4106	6840	50	5837 (95.4%) 5639	<i>ibid.</i>
Čavdar (Čavdar)		Bln-1241	6852	100	5981 (95.4%) 5570	<i>ibid.</i>
Čavdar (Čavdar)		Bln-1241 A	6830	100	5976 (95.4%) 5560	<i>ibid.</i>
Čavdar (Čavdar)		Bln-1162	6400	100	5606 (95.4%) 5080	<i>ibid.</i>
Čavdar (Čavdar)		Bln-1162 A	6985	100	6047 (95.4%) 5676	<i>ibid.</i>
Čavdar (Čavdar)		Bln-1251	6997	100	6059 (95.4%) 5708	<i>ibid.</i>
Čavdar (Čavdar)		Bln-1160	6680	100	5782 (95.4%) 5469	<i>ibid.</i>
Čavdar (Čavdar)		Bln-1160 A	7040	100	6085 (95.4%) 5720	<i>ibid.</i>
Čavdar (Čavdar)		Bln-908	6990	150	6207 (95.4%) 5626	<i>ibid.</i>
Čavdar (Čavdar)		Bln-911	6870	120	5998 (95.4%) 5564	<i>ibid.</i>
Čavdar (Čavdar)		Bln-909	6815	100	5970 (95.4%) 5546	<i>ibid.</i>
Čavdar (Čavdar)		Bln-910	6665	100	5753 (95.4%) 5385	<i>ibid.</i>
Čavdar (Čavdar)		Bln-910 A	6555	100	5657 (95.4%) 5323	<i>ibid.</i>
Čavdar (Čavdar)		Bln-907	6320	100	5481 (95.4%) 5046	<i>ibid.</i>
Čavdar (Čavdar)		Bln-1030	6760	100	5868 (95.4%) 5488	<i>ibid.</i>
Čavdar (Čavdar)		Bln-906	6720	100	5808 (95.4%) 5479	<i>ibid.</i>
Dobrinishte (Dobrinishte) (3)	41°51'6.48"N 23°35'4.94"E	Bln-3785	6650	60	5661 (95.4%) 5484	<i>Görsdorf, Bojadžiev 1996.127</i>

Site (No. on the Fig. 1)	Coordinates	Lab. No	Uncal. BP	St. error	Cal BC	Reference
Dobrinishte (Dobrinishte)		Bln-3786	6610	50	5623 (95.4%) 5483	Görsdorf, Bojadžiev 1996.127
Džuljunica-Smārdeš (15)	43° 7'17.50"N 25° 54'17.44"E	OxA-25045	6686	39	5669 (95.4%) 5531	Krauß et al. 2014.51-77
-//		OxA-25047	7140	40	6075 (95.4%) 5920	Krauß et al. 2014.51-77
-//		OxA-25046	6950	40	5971 (95.4%) 5736	Krauß et al. 2014.51-77
-//		OxA-24981	7185	40	6205 (95.4%) 5987	Krauß et al. 2014.51-77
-//		OxA-25043	7055	40	6013 (95.4%) 5846	Krauß et al. 2014.51-77
-//		OxA-24977	7136	40	6073 (95.4%) 5919	Krauß et al. 2014.51-77
-//		OxA-24978	7054	39	6012 (95.4%) 5847	Krauß et al. 2014.51-77
-//		OxA-24939	7171	36	6094 (95.4%) 5985	Krauß et al. 2014.51-77
-//		OxA-24935	7026	35	5995 (95.4%) 5840	Krauß et al. 2014.51-77
-//		OxA-24931	7066	38	6020 (95.4%) 5878	Krauß et al. 2014.51-77
-//		OxA-24932	7053	35	6010 (95.4%) 5849	Krauß et al. 2014.51-77
-//		OxA-25040	7049	39	6008 (95.4%) 5846	Krauß et al. 2014.51-77
-//		OxA-24938	7134	35	6067 (95.4%) 5923	Krauß et al. 2014.51-77
-//		OxA-25044	7095	40	6048 (95.4%) 5896	Krauß et al. 2014.51-77
-//		OxA-24979	7145	38	6075 (95.4%) 5925	Krauß et al. 2014.51-77
-//		OxA-25033	7084	36	6026 (95.4%) 5891	Krauß et al. 2014.51-77
-//		OxA-24980	7011	38	5990 (95.4%) 5802	Krauß et al. 2014.51-77
-//		OxA-24937	7588	37	6491 (95.4%) 6396	Krauß et al. 2014.51-77
-//		OxA-25042	7095	40	6048 (95.4%) 5896	Krauß et al. 2014.51-77
-//		OxA-24934	7195	37	6205 (95.4%) 5995	Krauß et al. 2014.51-77
-//		OxA-24936	7083	36	6025 (95.4%) 5892	Krauß et al. 2014.51-77
Eleshnitsa (Eleshnitsa, Elešnica) (4)	41°54'33.91"N 23°39'54.10"E	Bln-3238	7010	60	6002 (95.4%) 5758	Görsdorf, Bojadžiev 1996.126-127
Eleshnitsa		Bln-3241	6960	60	5982 (95.4%) 5730	Görsdorf, Bojadžiev 1996.126-127
Eleshnitsa		Bln-3242	6940	50	5974 (95.4%) 5726	Görsdorf, Bojadžiev 1996.126-127
Eleshnitsa		Bln-3239	6920	60	5978 (95.4%) 5677	Görsdorf, Bojadžiev 1996.126-127
Eleshnitsa		Bln-3940	6850	50	5841 (95.4%) 5643	Görsdorf, Bojadžiev 1996.126-127
Eleshnitsa		Bln-3245	6730	90	5786 (95.4%) 5485	Görsdorf, Bojadžiev 1996.126-127
Eleshnitsa		Bln-3237	6790	50	5762 (95.4%) 5620	Görsdorf, Bojadžiev 1996.126-127
Eleshnitsa		Bln-3244	6720	70	5736 (95.4%) 5514	Görsdorf, Bojadžiev 1996.126-127
Galabnik (5)	42°26'49.35"N 23° 5'54.29"E	Bln-3580	7120	70	6205 (95.4%) 5842	Görsdorf, Bojadžiev 1996.122-123
Galabnik		Bln-3579	7030	70	6022 (95.4%) 5752	Görsdorf, Bojadžiev 1996.122-123
Galabnik		Bln-3579 H	7220	80	6245 (95.4%) 5920	Görsdorf, Bojadžiev 1996.122-123
Galabnik		Bln-3582	6950	70	5986 (95.4%) 5719	Görsdorf, Bojadžiev 1996.122-123
Galabnik		Bln-3581	6790	80	5870 (95.4%) 5551	Görsdorf, Bojadžiev 1996.122-123
Galabnik		GrN-19786	7070	180	6352 (95.4%) 5632	Görsdorf, Bojadžiev 1996.122-123
Galabnik		GrN-19785	7020	60	6010 (95.4%) 5763	Görsdorf, Bojadžiev 1996.122-123
Galabnik		GrN-19784	7070	60	6060 (95.4%) 5812	Görsdorf, Bojadžiev 1996.122-123
Galabnik		Bln-4095	7020	150	6211 (95.4%) 5643	Görsdorf, Bojadžiev 1996.122-123
Galabnik		Bln-4096	7140	80	6213 (95.4%) 5849	Görsdorf, Bojadžiev 1996.122-123
Galabnik		Bln-4094	6760	80	5834 (95.4%) 5527	Görsdorf, Bojadžiev 1996.122-123
Galabnik		Bln-4093	7100	80	6203 (95.4%) 5783	Görsdorf, Bojadžiev 1996.122-123
Galabnik		GrN-19783	6970	50	5981 (95.4%) 5740	Görsdorf, Bojadžiev 1996.122-123
Galabnik		Bln-4091	6760	60	5751 (95.4%) 5558	Görsdorf, Bojadžiev 1996.122-123
Galabnik		Bln-4092	6710	60	5723 (95.4%) 5529	Görsdorf, Bojadžiev 1996.122-123
Galabnik		Bln-3576	6670	70	5706 (95.4%) 5486	Görsdorf, Bojadžiev 1996.122-123
Karanovo (6)	42°30'45.67"N 25°54'55.43"E	Bln-4339	7090	90	6203 (95.4%) 5750	Görsdorf, Weninger 1993; Görsdorf, Bojadžiev 1996.133-136; Kohl, Quitta 1966; Quitta, Kohl 1969.37

Site (No. on the Fig. 1)	Coordinates	Lab. No	Uncal. BP	St. error	Cal BC	Reference
Karanovo		Bln-4336	7110	50	6067 (95.4%) 5892	<i>ibid.</i>
Karanovo		Bln-4338	6955	45	5975 (95.4%) 5736	<i>ibid.</i>
Karanovo		Bln-4337	6810	65	5842 (95.4%) 5618	<i>ibid.</i>
Karanovo		Bln-4335	6710	55	5719 (95.4%) 5535	<i>ibid.</i>
Karanovo		Bln-3942	6820	50	5803 (95.4%) 5629	<i>ibid.</i>
Karanovo		Bln-4177	7110	50	6067 (95.4%) 5892	<i>ibid.</i>
Karanovo		Bln-4179	7130	70	6206 (95.4%) 5846	<i>ibid.</i>
Karanovo		Bln-4178	6730	80	5756 (95.4%) 5490	<i>ibid.</i>
Karanovo		Bln-3943	6760	50	5736 (95.4%) 5569	<i>ibid.</i>
Karanovo		Bln-3941	6750	50	5732 (95.4%) 5565	<i>ibid.</i>
Karanovo		Bln-3944	6785	60	5794 (95.4%) 5566	<i>ibid.</i>
Karanovo		Bln-3716	6910	60	5972 (95.4%) 5674	Görsdorf, Weninger 1993; Gorsdorf, Bojadžiev 1996.133–136; Kohl, Quitta 1966; Quitta, Kohl 1969.37
Karanovo		Bln-3716 H	6850	60	5873 (95.4%) 5635	<i>ibid.</i>
Karanovo		Bln-3586	6780	60	5788 (95.4%) 5565	<i>ibid.</i>
Karanovo		Bln-152	6807	100	5966 (95.4%) 5536	<i>ibid.</i>
Karanovo		Bln-201	6540	100	5643 (95.4%) 5317	<i>ibid.</i>
Karanovo		Bln-234	6490	150	5716 (95.4%) 5079	<i>ibid.</i>
Karanovo		Bln-3904	6375	70	5476 (95.4%) 5224	<i>ibid.</i>
Karanovo		Bln-3458	6440	60	5509 (95.4%) 5309	<i>ibid.</i>
Karanovo		Bln-3459	6420	60	5491 (95.4%) 5236	<i>ibid.</i>
Karanovo		Bln-3460	6440	60	5509 (95.4%) 5309	<i>ibid.</i>
Karanovo		Bln-3461	6480	60	5545 (95.4%) 5321	<i>ibid.</i>
Karanovo		Bln-3464	6500	50	5602 (95.4%) 5358	<i>ibid.</i>
Karanovo		Bln-3463	6350	60	5469 (95.4%) 5221	<i>ibid.</i>
Karanovo		Bln-3465	6410	60	5486 (95.4%) 5232	<i>ibid.</i>
Karanovo		Bln-3587	6380	60	5476 (95.4%) 5227	<i>ibid.</i>
Karanovo		Bln-3717	6450	60	5513 (95.4%) 5315	<i>ibid.</i>
Karanovo		Bln-3717 H	6510	60	5613 (95.4%) 5345	<i>ibid.</i>
Karanovo		Bln-158	6395	100	5558 (95.4%) 5079	<i>ibid.</i>
Kazanlak (7)	42°38'14.05"N 25°23'39.76"E	Bln-730	6335	160	5616 (95.4%) 4935	Georgiev 1974; Nikolov, Karastoyanova 2003
Kazanlak		Bln-729	6330	100	5482 (95.4%) 5053	<i>ibid.</i>
Kovachevo (Kovačevo) (8)	41°30'20.16"N 23°28'11.55"E	Ly-1437 (OxA)	7180	45	6207 (95.4%) 5983	Grebska-Kulova 2008; Lichardus-Ippen et al. 2000; 2002; 2006; Kovacheva 1995; Pemitcheva 1990
Kovachevo		Ly-1654 (OxA)	7090	70	6081 (95.4%) 5796	<i>ibid.</i>
Kovachevo		Ly-1439 (OxA)	6975	50	5982 (95.4%) 5743	<i>ibid.</i>
Kovachevo		Ly-1438 (OxA)	6990	45	5984 (95.4%) 5764	<i>ibid.</i>
Kovachevo		Ly-1620 (OxA)	6980	65	5988 (95.4%) 5737	<i>ibid.</i>
Kovachevo		Ly-6553	6760	160	5992 (95.4%) 5385	<i>ibid.</i>
Kovachevo		Ly-6554	6830	85	5963 (95.4%) 5566	<i>ibid.</i>
Kremenik (Sapareva Bania) (Sapareva Banja) (9)	42°22'0.09"N 23° 3'53.50"E	Bln-2554	6620	100	5720 (95.4%) 5377	Görsdorf, Bojadžiev 1996.127–128
Kremenik		Bln-2552	6460	60	5524 (95.4%) 5317	Görsdorf, Bojadžiev 1996.127–128
Kremenik		Bln-2554A	6840	60	5868 (95.4%) 5629	Görsdorf, Bojadžiev 1996.127–128
Kremenik		Bln-2553	6660	60	5671 (95.4%) 5483	Görsdorf, Bojadžiev 1996.127–128
Kremenik		Bln-2105	6530	50	5612 (95.4%) 5376	Görsdorf, Bojadžiev 1996.127–128
Kremenik		Bln-2556	6480	60	5545 (95.4%) 5321	Görsdorf, Bojadžiev 1996.127–128
Kremenik		Bln-2106	6475	40	5516 (95.4%) 5357	Görsdorf, Bojadžiev 1996.127–128
Kremenik		Bln-2550	6550	60	5621 (95.4%) 5379	Görsdorf, Bojadžiev 1996.127–128
Kremenik		Bln-2551	6450	100	5613 (95.4%) 5224	Görsdorf, Bojadžiev 1996.127–128

Site (No. on the Fig. 1)	Coordinates	Lab. No	Uncal. BP	St. error	Cal BC	Reference
Kremenik		Bln-2549	6350	60	5469 (95.4%) 5221	Görsdorf, Bojadžiev 1996.127–128
Ohoden (12)	43°23'7.84"N 23°42'49.36"E	KN-5655	6830	45	5803 (95.4%) 5636	Ganetovski, G. 2007
Ovčarovo-gorata (13)	43°6'43.05"N 26°39'13.20"E	Bln-1544	6688	60	5715 (95.4%) 5511	Görsdorf, Bojadžiev 1996.128–129
Ovčarovo-gorata		Bln-1620	6463	50	5509 (95.4%) 5324	Görsdorf, Bojadžiev 1996.128–129
Ovčarovo-gorata		Bln-2032	6555	70	5625 (95.4%) 5376	Görsdorf, Bojadžiev 1996.128–129
Ovčarovo-gorata		Poz-16984	6890	40	5882 (95.4%) 5707	Krauß 2014.174–200
Ovčarovo-gorata		Poz-16985	6890	40	5882 (95.4%) 5707	Krauß 2014.174–200
Ovčarovo-gorata		Poz-16986	6500	40	5535 (95.4%) 5371	Krauß 2014.174–200
Ovčarovo-gorata		Poz-18480	6900	40	5881 (95.4%) 5716	Krauß 2014.174–200
Ovčarovo-gorata		Poz-18483	6750	40	5726 (95.4%) 5575	Krauß 2014.174–200
Ovčarovo-gorata		Poz-18484	6640	40	5632 (95.4%) 5494	Krauß 2014.174–200
Ovčarovo-gorata		Poz-18486	6800	40	5741 (95.4%) 5631	Krauß 2014.174–200
Ovčarovo-gorata		Poz-18487	6660	40	5646 (95.4%) 5512	Krauß 2014.174–200
Ovčarovo-gorata		Poz-18489	6750	40	5726 (95.4%) 5575	Krauß 2014.174–200
Ovčarovo-gorata		Poz-18490	6780	40	5730 (95.4%) 5628	Krauß 2014.174–200
Ovčarovo-gorata		Poz-18491	6810	40	5754 (95.4%) 5631	Krauß 2014.174–200
Ovčarovo-gorata		Poz-18493	6670	40	5659 (95.4%) 5522	Krauß 2014.174–200
Ovčarovo-gorata		Poz-18494	6690	40	5674 (95.4%) 5529	Krauß 2014.174–200
Ovcharovo-platoto 2 (Ovčarovo-platoto 2) (16)	43°11'39"N 26°38'12"E	Bln-1356	6480	60	5545 (95.4%) 5321	Görsdorf, Bojadžiev 1996.129
Polyanitsa-platoto (Poljanica-platoto) (14)	43°14'30.22"N 26°35'29.18"E	Bln-1571	7535	80	6563 (95.4%) 6230	Görsdorf, Bojadžiev 1996.121–122
Polyanitsa-platoto		Bln-1512	7140	80	6213 (95.4%) 5849	Görsdorf, Bojadžiev 1996.121–122
Polyanitsa-platoto		Bln-1613	7380	60	6392 (95.4%) 6094	Görsdorf, Bojadžiev 1996.121–122
Polyanitsa-platoto		Bln-1613 A	7275	60	6242 (95.4%) 6020	Görsdorf, Bojadžiev 1996.121–122
Slatina (10)	42°41'18.06"N 23°21'56.18"E	Bln-3434	6890	60	5963 (95.4%) 5661	Görsdorf, Bojadžiev 1996
Slatina		Bln-3435	6860	50	5869 (95.4%) 5644	Görsdorf, Bojadžiev 1996
Slatina		Bln-3436	6840	60	5868 (95.4%) 5629	Görsdorf, Bojadžiev 1996
Slatina		Bln-3437	6810	50	5789 (95.4%) 5626	Görsdorf, Bojadžiev 1996
Slatina		Bln-3438	6960	60	5982 (95.4%) 5730	Görsdorf, Bojadžiev 1996
Slatina		Bln-3439	6940	60	5981 (95.4%) 5718	Görsdorf, Bojadžiev 1996
Slatina		Bln-3440	6840	60	5868 (95.4%) 5629	Görsdorf, Bojadžiev 1996
Slatina		Bln-3441	6960	60	5982 (95.4%) 5730	Görsdorf, Bojadžiev 1996
Slatina		Bln-3442	6780	60	5788 (95.4%) 5565	Görsdorf, Bojadžiev 1996
Slatina		Bln-3443	6840	60	5868 (95.4%) 5629	Görsdorf, Bojadžiev 1996
Slatina		Bln-3504	6970	60	5983 (95.4%) 5736	Görsdorf, Bojadžiev 1996
Slatina		Bln-3555	6930	60	5980 (95.4%) 5712	Görsdorf, Bojadžiev 1996
Stara Zagora-Okražna bolnitsa (Okražna Bolnica) (11)	42°25'45.00"N 25°36'17.97"E	Bln-1587	7139	65	6207 (95.4%) 5886	Görsdorf, Bojadžiev 1996
-/-		Bln-1586	6814	65	5843 (95.4%) 5619	Görsdorf, Bojadžiev 1996
-/-		Bln-1589	6918	45	5902 (95.4%) 5717	Görsdorf, Bojadžiev 1996
-/-		Bln-1252	6844	100	5979 (95.4%) 5565	Görsdorf, Bojadžiev 1996
-/-		Bln-1250	6820	100	5972 (95.4%) 5556	Görsdorf, Bojadžiev 1996
-/-		Bln-1163	6688	150	5896 (95.4%) 5345	Görsdorf, Bojadžiev 1996
-/-		Bln-1588	6750	60	5743 (95.4%) 5555	Görsdorf, Bojadžiev 1996
-/-		Bln-1164	6723	100	5809 (95.4%) 5480	Görsdorf, Bojadžiev 1996
-/-		Bln-1164	6744	100	5837 (95.4%) 5487	Görsdorf, Bojadžiev 1996

Note: the full code for the data analysis is available from M. Porčić on request.